

V&V Reference Report

L2 ASCDS Version : 8.4.5

Observation 3653 - L2 Version 4
Chandra X-Ray Center

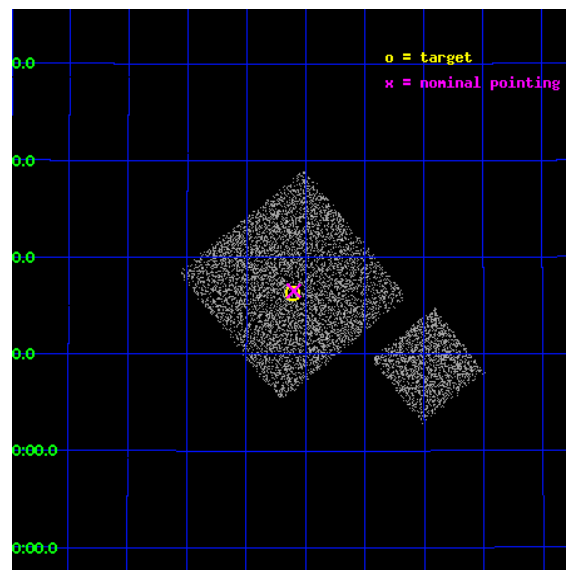
L2 Processing Date : Oct 24 2012

Contents

1	Front	2
2	OBI	3
2.1	OBI	3
2.1.1	Images	3
2.1.2	Bias	3
2.1.3	Parameters	4
2.1.4	Events	4
2.2	Compared Parameters	5
2.3	Aspect	6
2.4	Star Slots	9
2.4.1	Slot 3	9
2.4.2	Slot 4	10
2.4.3	Slot 5	11
2.4.4	Slot 6	12
2.4.5	Slot 7	13
2.5	FID Slots	14
2.5.1	Slot 0	14
2.5.2	Slot 1	15
2.5.3	Slot 2	16
A	Summary	17
A.1	Status	17
A.2	Comments	17

1 Front

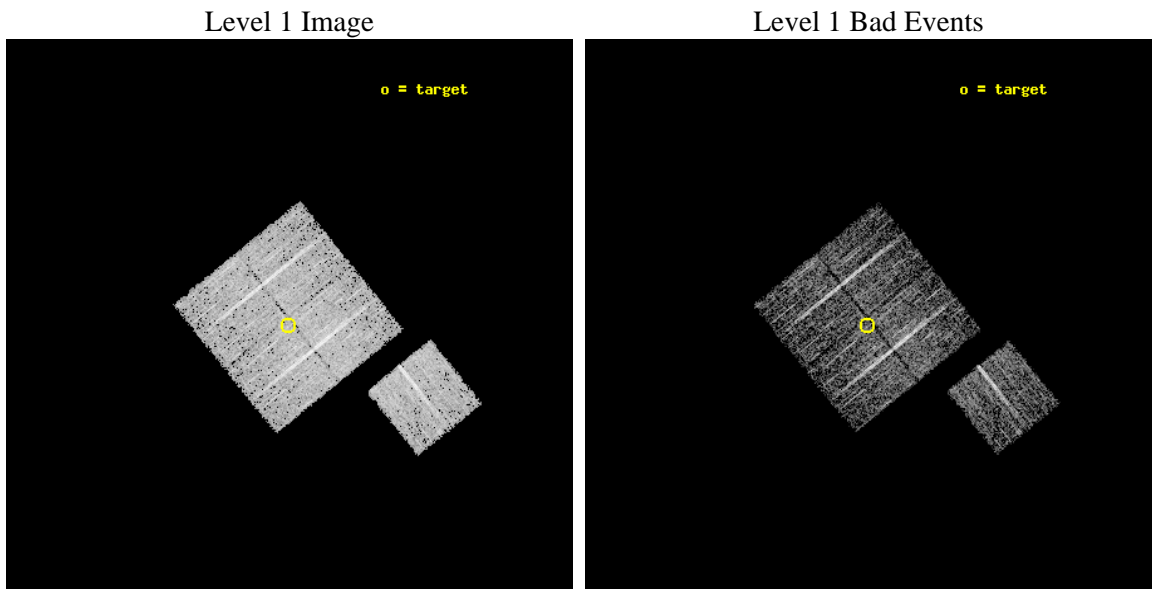
seq_num	900253	Sequence number
obs_id	3653	Observation id
title	CHANDRA LARGE SCALE SURVEY OF THE NOAO BOOTES DEEP FIELD	Proposal
observer	Dr. Stephen Murray	Principal investigator
object	NOAO FIELD F54	Source name
dtcycle	0	
cycle	P	events from which exps? Prim/Second/Both
ra_targ	216.527246	Observer's specified target RA [deg]
dec_targ	34.271694	Observer's specified target Dec [deg]
ra_nom	216.5246227406	Nominal RA [deg]
dec_nom	34.275779003982	Nominal Dec [deg]
roll_nom	141.01017674987	Nominal Roll [deg]
revision	4	Processing version of data
ontime	4776.68405509	Sum of GTIs [s]
livetime	4714.2731613666	Livetime [s]
ontime0	4776.5609151721	Sum of GTIs [s]
ontime1	4776.6019551754	Sum of GTIs [s]
ontime2	4776.6429951787	Sum of GTIs [s]
ontime3	4776.68405509	Sum of GTIs [s]
ontime6	4773.378875047	Sum of GTIs [s]
l2events	9465	Number of level 2 events



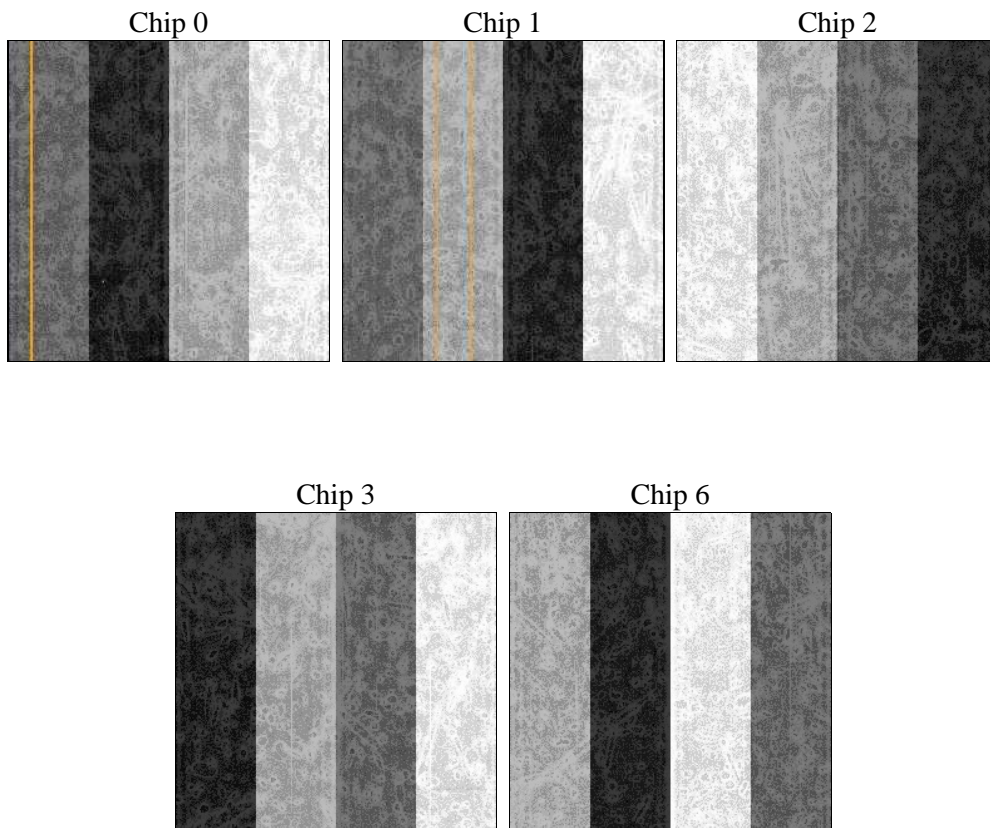
2 OBI

2.1 OBI

2.1.1 Images



2.1.2 Bias



2.1.3 Parameters

obi_num	0	Obi number	sched_exp_time	5000.000000	[s] Scheduled observation exposure time
ascdsver	8.4.5	Processing system revision	ontime	4776.68405509	Sum of GTIs [s]
caldsver	4.5.2	 	ontime0	4776.5609151721	Sum of GTIs [s]
date	2012-10-24T20:58:27	Date and time of file creation	ontime1	4776.6019551754	Sum of GTIs [s]
revision	4	Processing version of data	ontime2	4776.6429951787	Sum of GTIs [s]
			ontime3	4776.68405509	Sum of GTIs [s]
			ontime6	4773.378875047	Sum of GTIs [s]
			l1events	119254	Number of level 1 events

2.1.4 Events

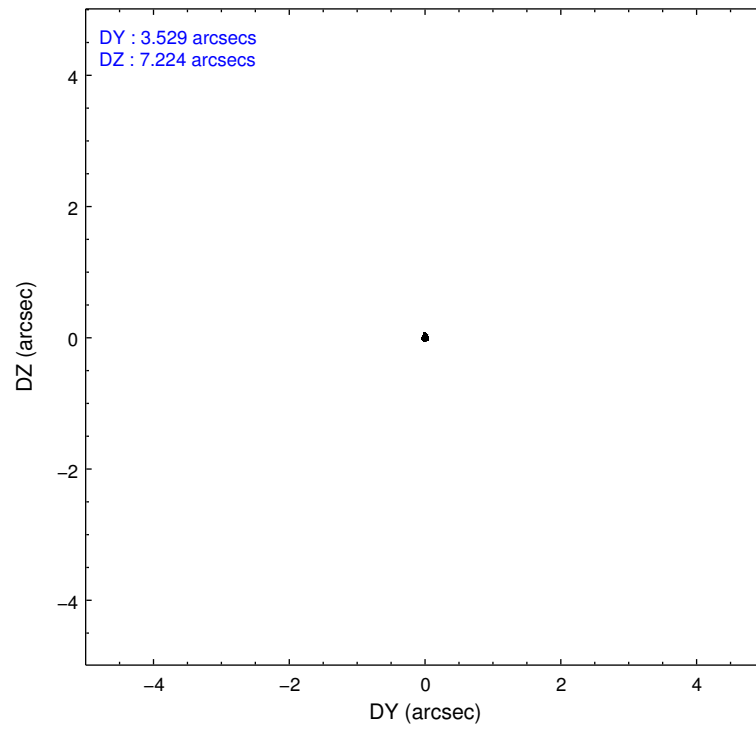
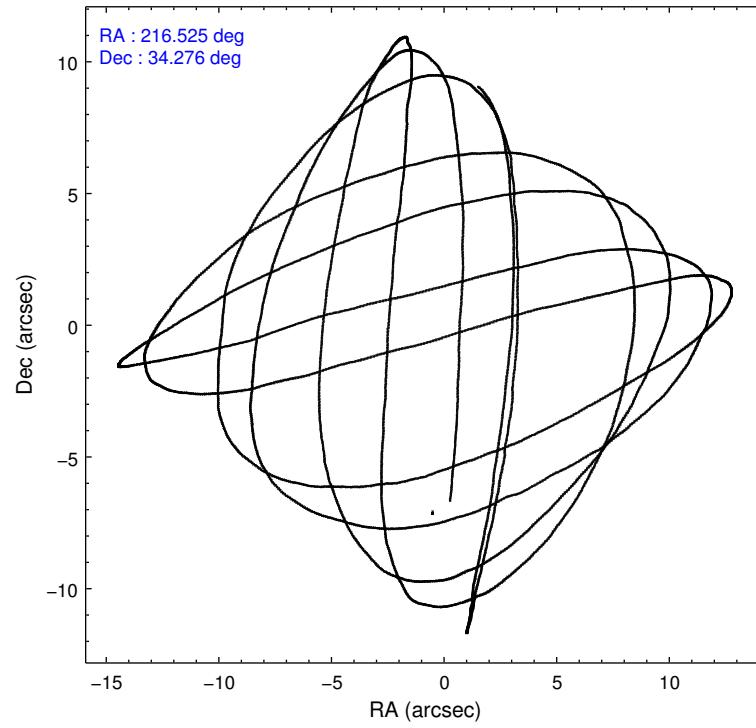
	ccd 0	ccd 1	ccd 2	ccd 3	ccd 6
level 1 events	22465	22953	25884	23793	24159
rejected events	20038	20512	23682	21659	21749
rejected %	89%	89%	91%	91%	90%

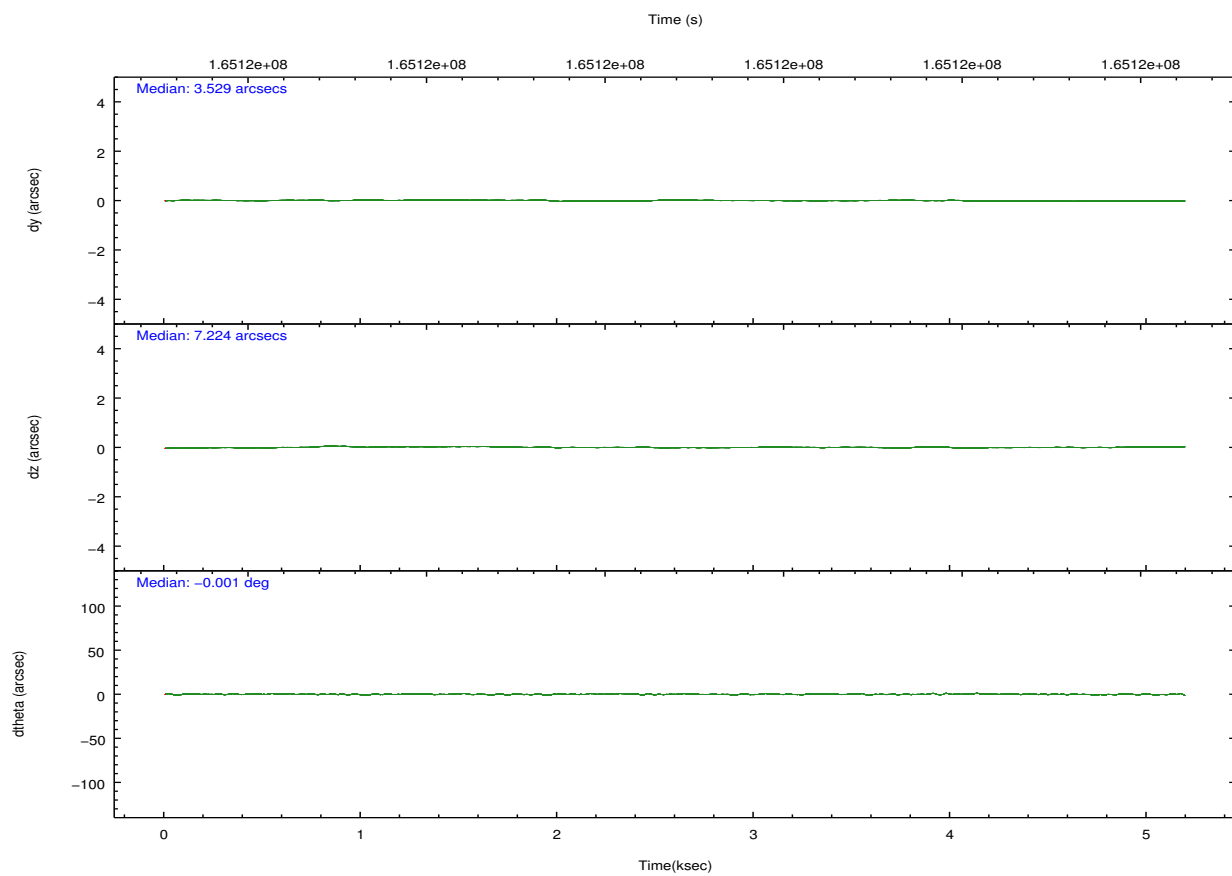
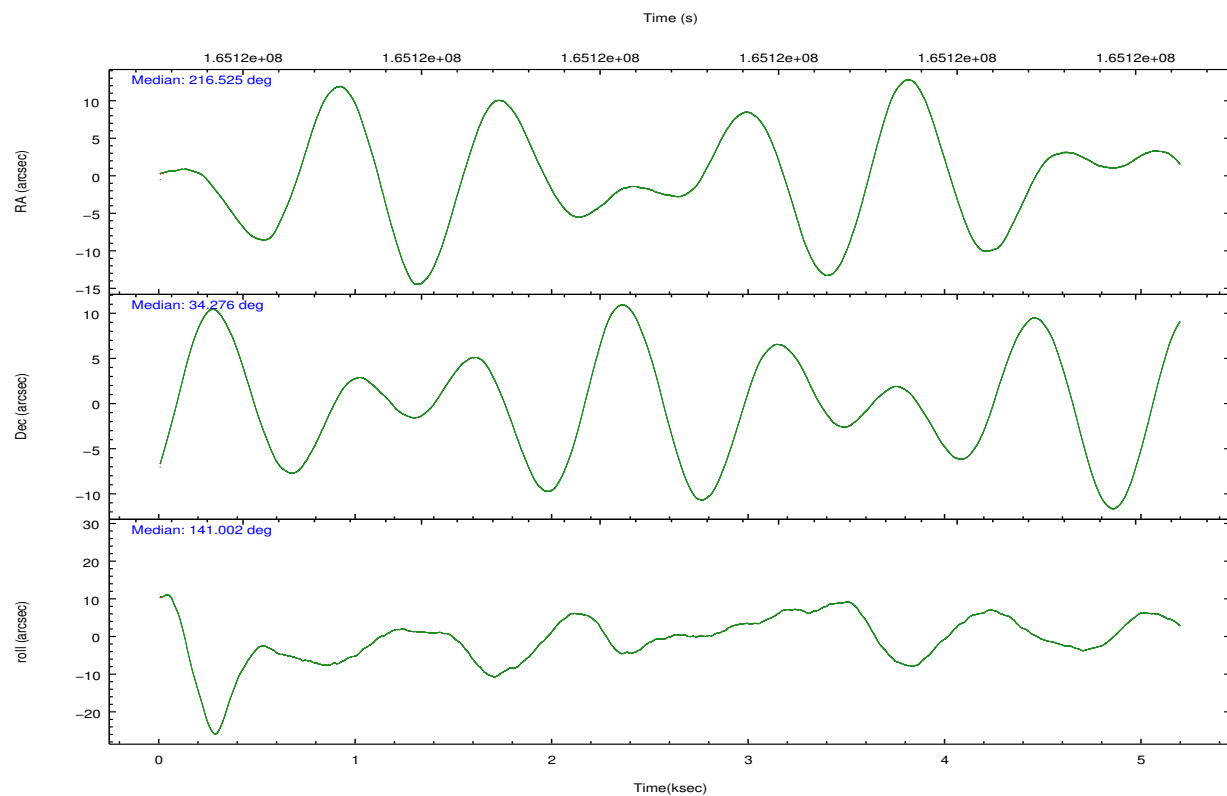
	ccd 0	ccd 1	ccd 2	ccd 3	ccd 6
grade 0 events	862	834	835	802	886
	3%	3%	3%	3%	3%
grade 1 events	15	9	14	19	10
	0%	0%	0%	0%	0%
grade 2 events	551	530	506	446	520
	2%	2%	1%	1%	2%
grade 3 events	299	331	276	254	271
	1%	1%	1%	1%	1%
grade 4 events	269	271	255	235	255
	1%	1%	0%	0%	1%
grade 5 events	704	746	657	750	778
	3%	3%	2%	3%	3%
grade 6 events	446	475	334	397	479
	1%	2%	1%	1%	1%
grade 7 events	19319	19757	23007	20890	20960
	85%	86%	88%	87%	86%

2.2 Compared Parameters

Parameter	Planned	Actual	Parameter	Planned	Actual
Instrument	ACIS	ACIS	Obspar format version number	7	7
Detector	ACIS-01236	ACIS-01236	Obspar file type	PREDICTED	ACTUAL
Grating	NONE	NONE	Obspar update status	NONE	UPDATED
Data mode	VFAINT	VFAINT	Number of optional ACIS chips dropped	0	0
Observation mode	POINTING	POINTING	On-chip summing requested	N	N
[deg] Pointing RA	216.557355	216.5246227406013	Subarray requested	NONE	NONE
[deg] Pointing Dec	34.271609	34.27577900398241	Alternating exposures requested	N	N
[deg] Pointing Roll	140.783041	141.010176749867	[s] Primary exposure time	0.000000	3.1
[mm] SIM focus pos	-0.782348	-0.7809083437167272			
[mm] SIM defocus	0	0.001439871863259334			
[mm] SIM translation stage pos	-233.592463	-233.5874344608287			
[mm] SIM translation stage offset	0	-0.005018542100998502			
[s] Observation start time (MET)	165119989.184000	165119613.61352			
Observation start date	2003-03-27T02:38:45	2003-03-27T02:33:33			
[s] Observation end time (MET)	165124989.184000	165125124.01375			
Observation end date	2003-03-27T04:02:05	2003-03-27T04:05:24			
Read mode	TIMED	TIMED			

2.3 Aspect



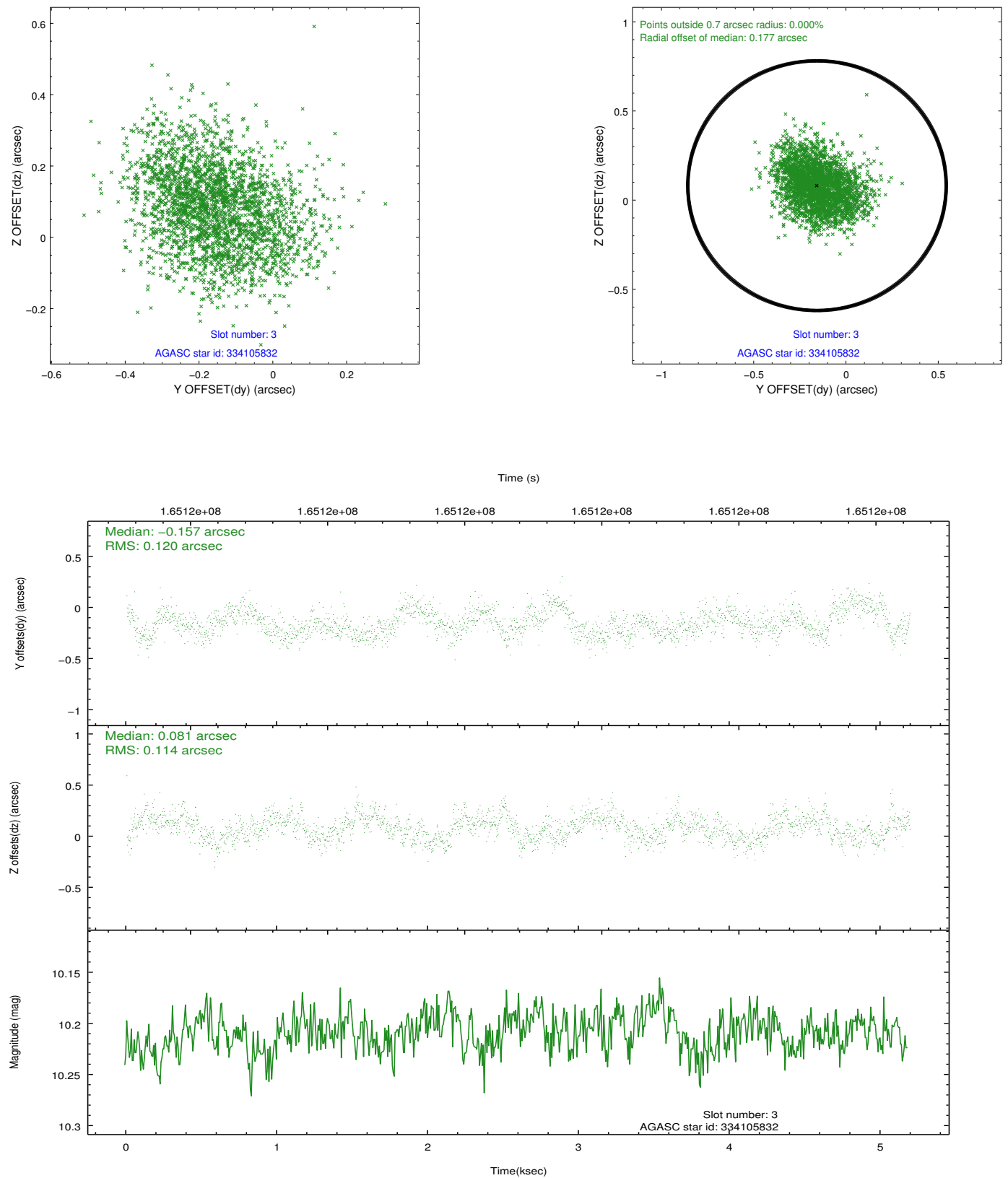


Slot Statistics

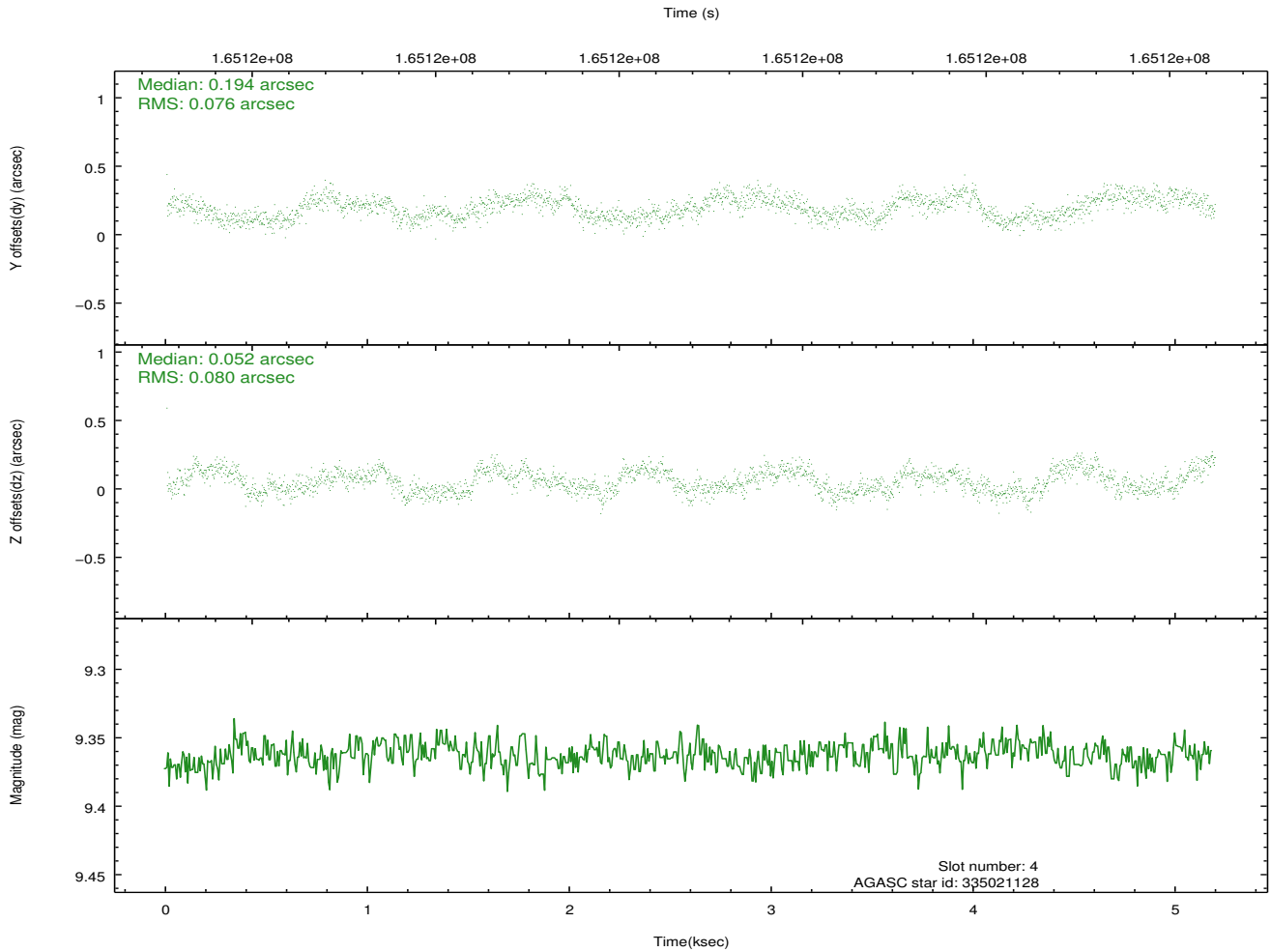
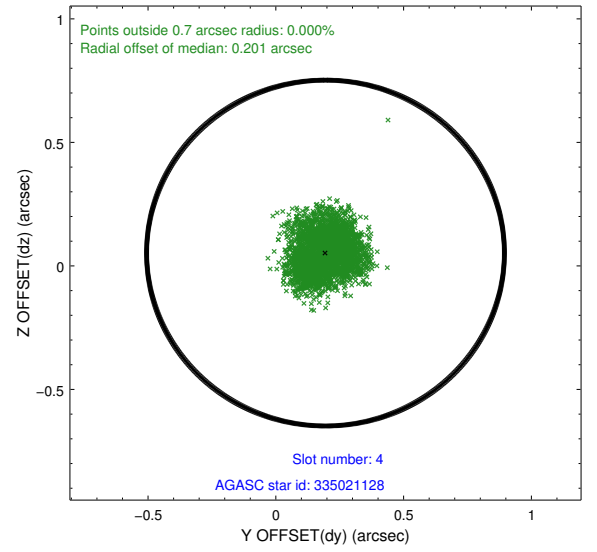
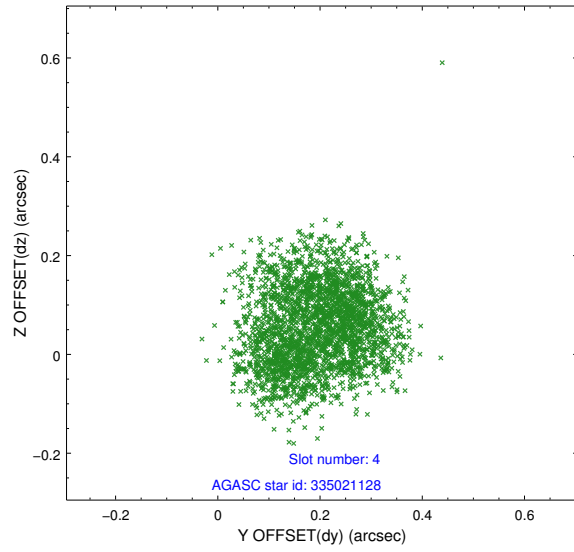
slot	status	id	mag	n_pts	med_dy	med_dz	dr1	dr2	ra	dec	mean_y	mean_z
0	FID	ACIS-I-1	7.25	1266	0.022	0.014	0.006	0.011	0.000000	0.000000	936.26	-830.62
1	FID	ACIS-I-5	7.24	1266	-0.097	0.064	0.006	0.010	0.000000	0.000000	-1811.29	1066.38
2	FID	ACIS-I-6	7.26	1266	-0.016	-0.008	0.007	0.011	0.000000	0.000000	400.54	1712.10
3	GUIDE	334105832	10.21	2530	-0.157	0.081	0.178	0.286	215.847735	34.556918	2284.08	529.40
4	GUIDE	335021128	9.36	2531	0.194	0.052	0.120	0.178	216.159551	34.422539	1261.53	324.81
5	GUIDE	335024096	10.54	2524	0.012	-0.193	0.439	0.594	216.160719	34.374830	1150.12	455.75
6	GUIDE	335028336	9.48	2530	0.009	0.047	0.155	0.235	217.189840	34.665629	-549.37	-2287.20
7	GUIDE	335030384	8.83	2522	-0.031	0.039	0.128	0.181	216.806407	34.722197	455.49	-1723.95

2.4 Star Slots

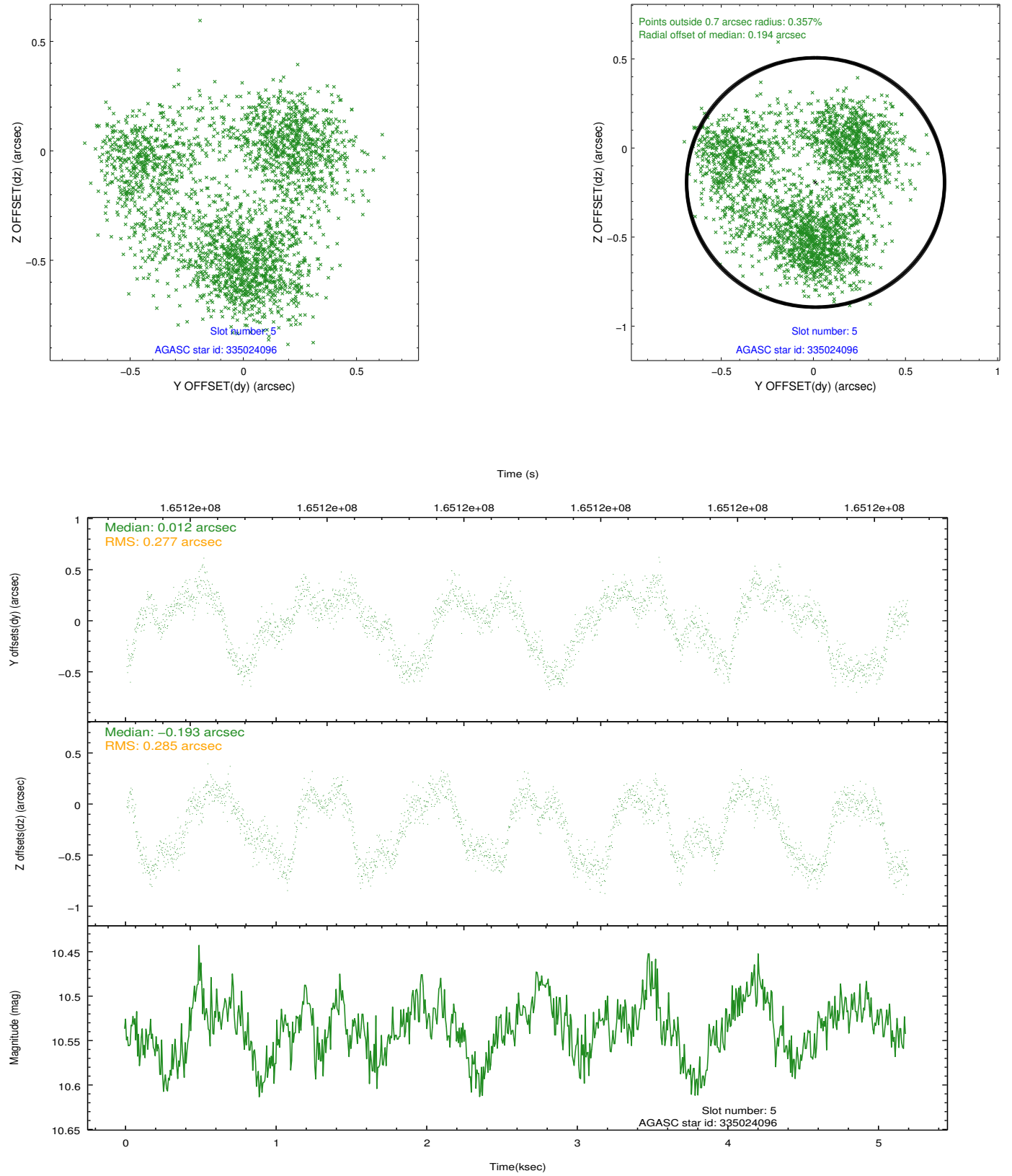
2.4.1 Slot 3



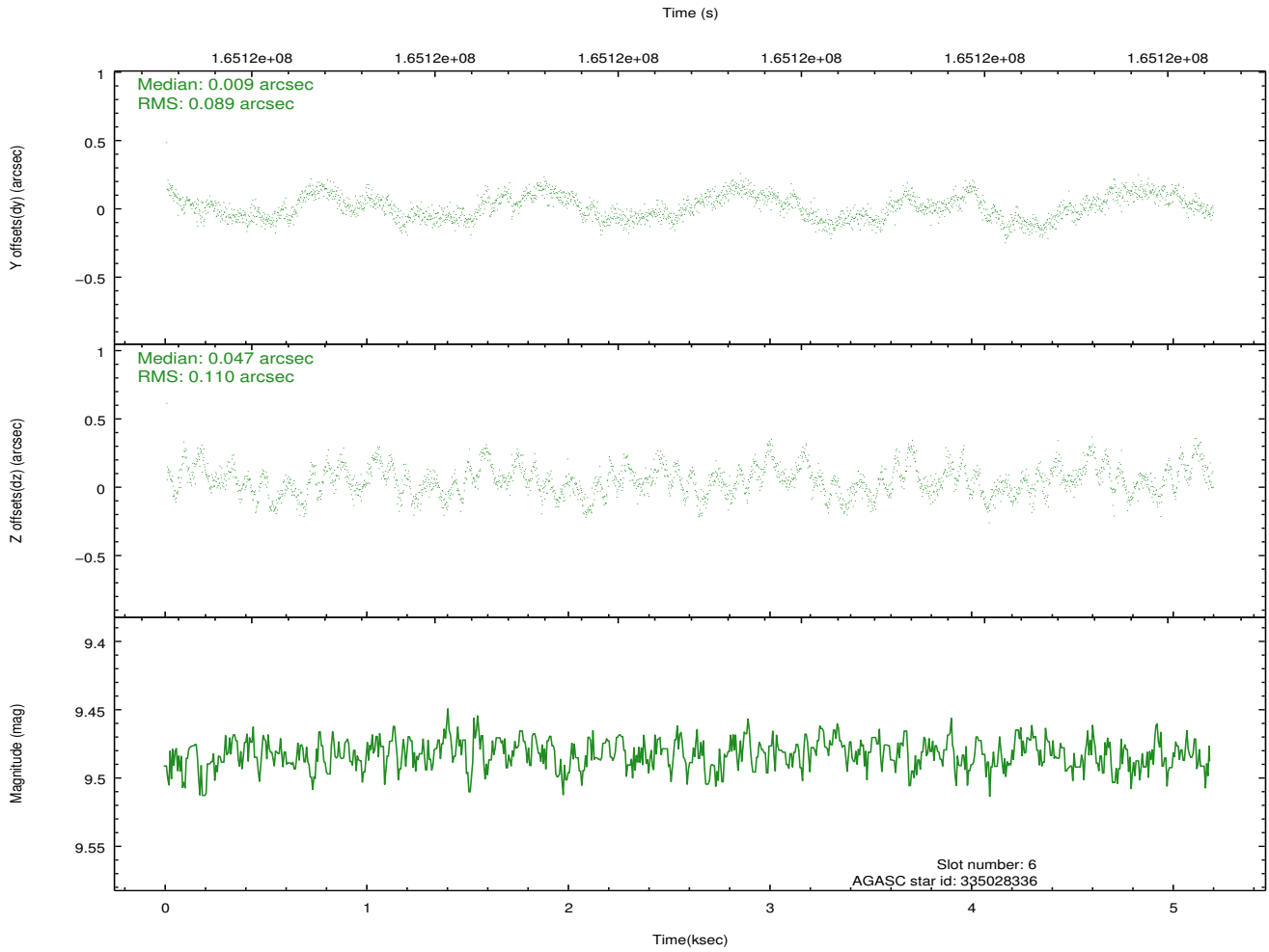
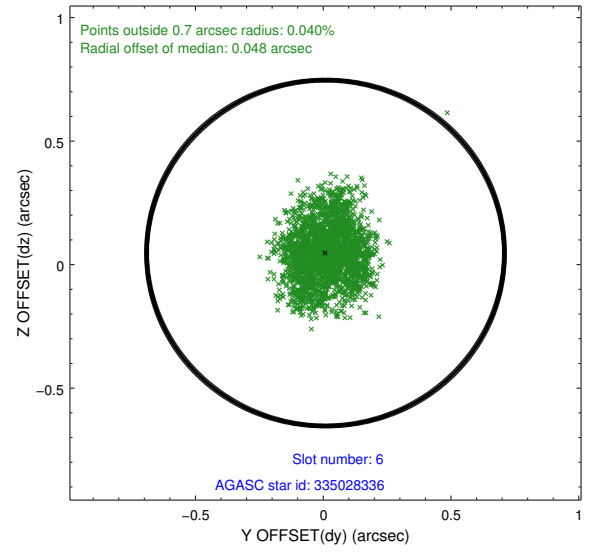
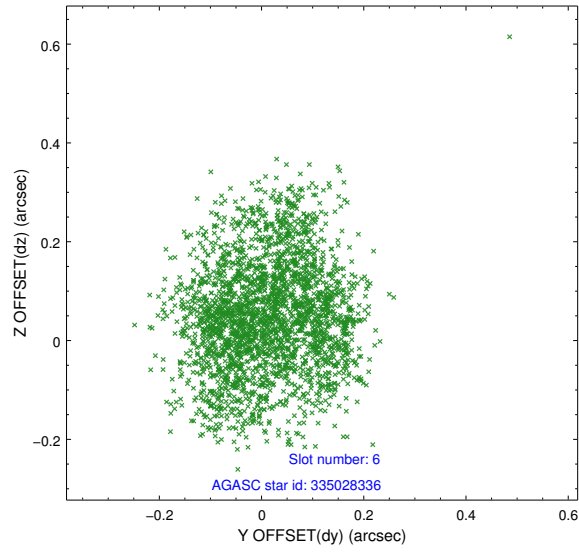
2.4.2 Slot 4



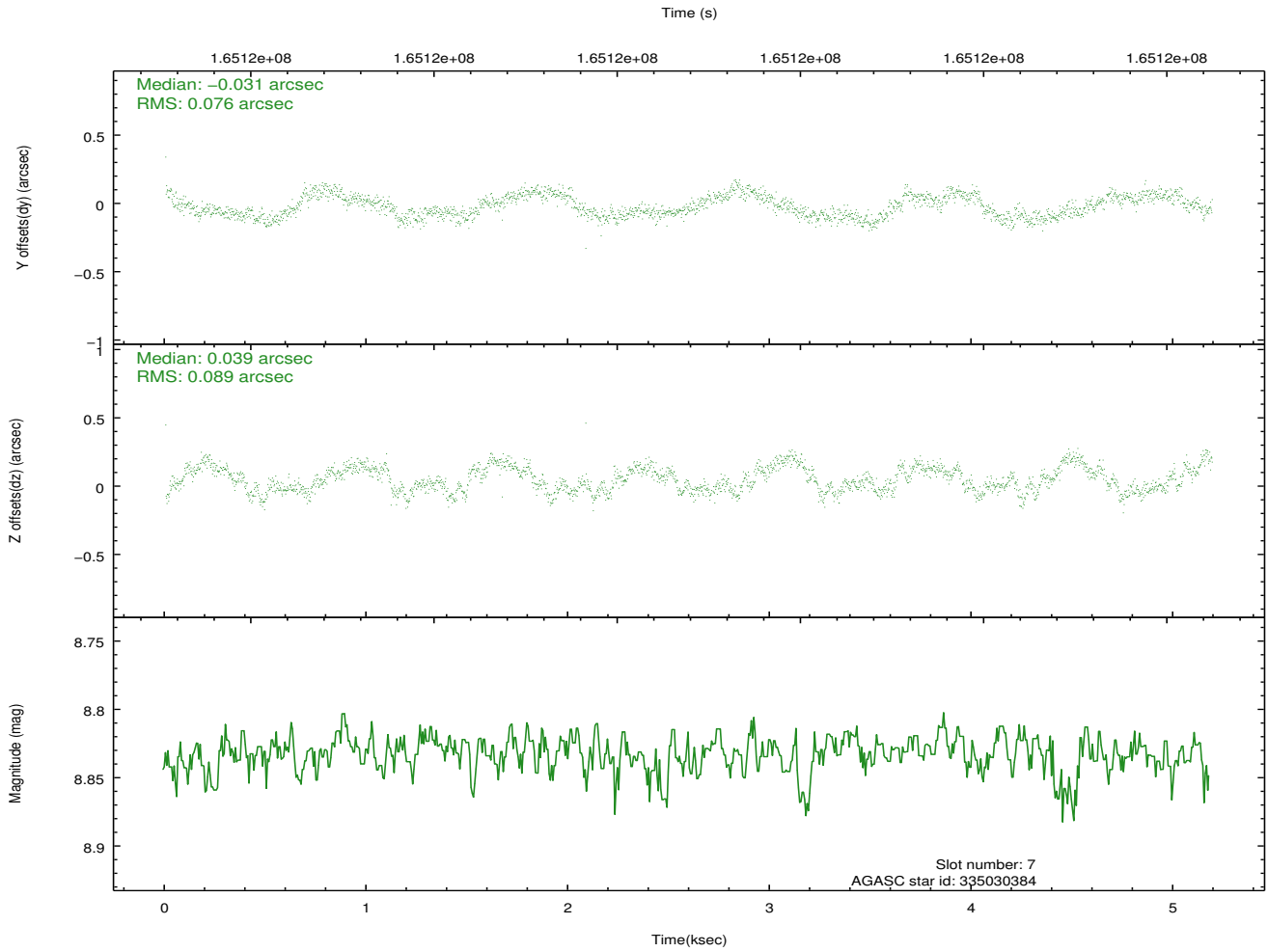
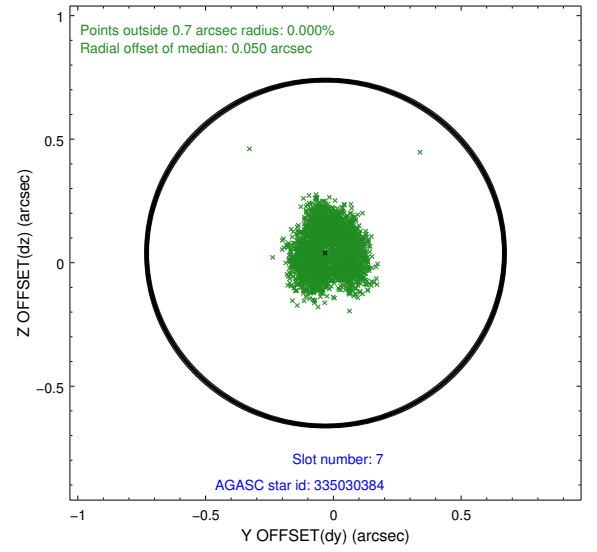
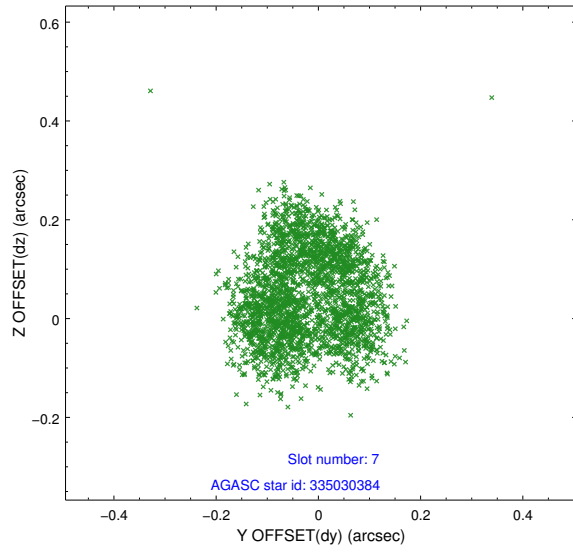
2.4.3 Slot 5



2.4.4 Slot 6

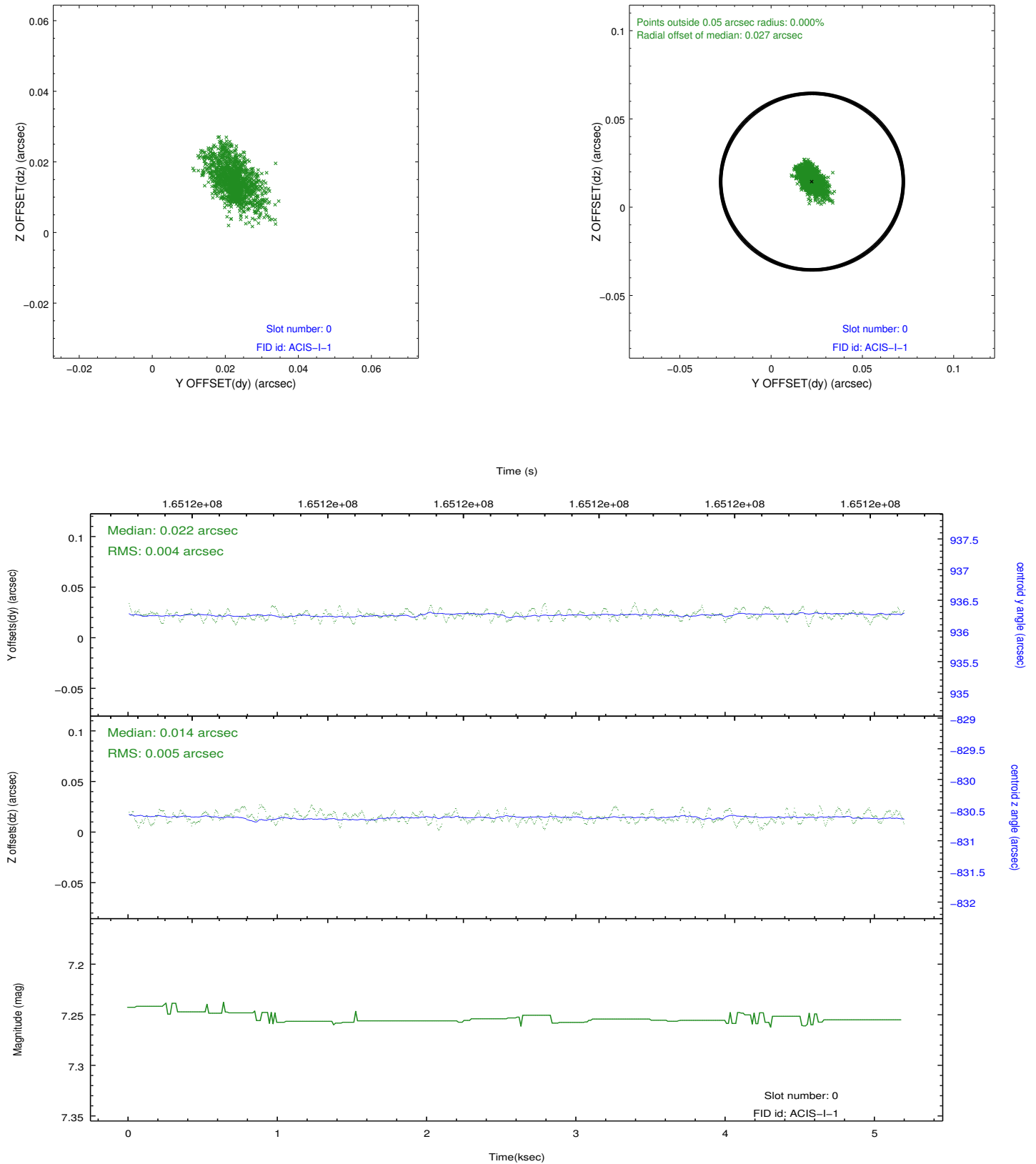


2.4.5 Slot 7

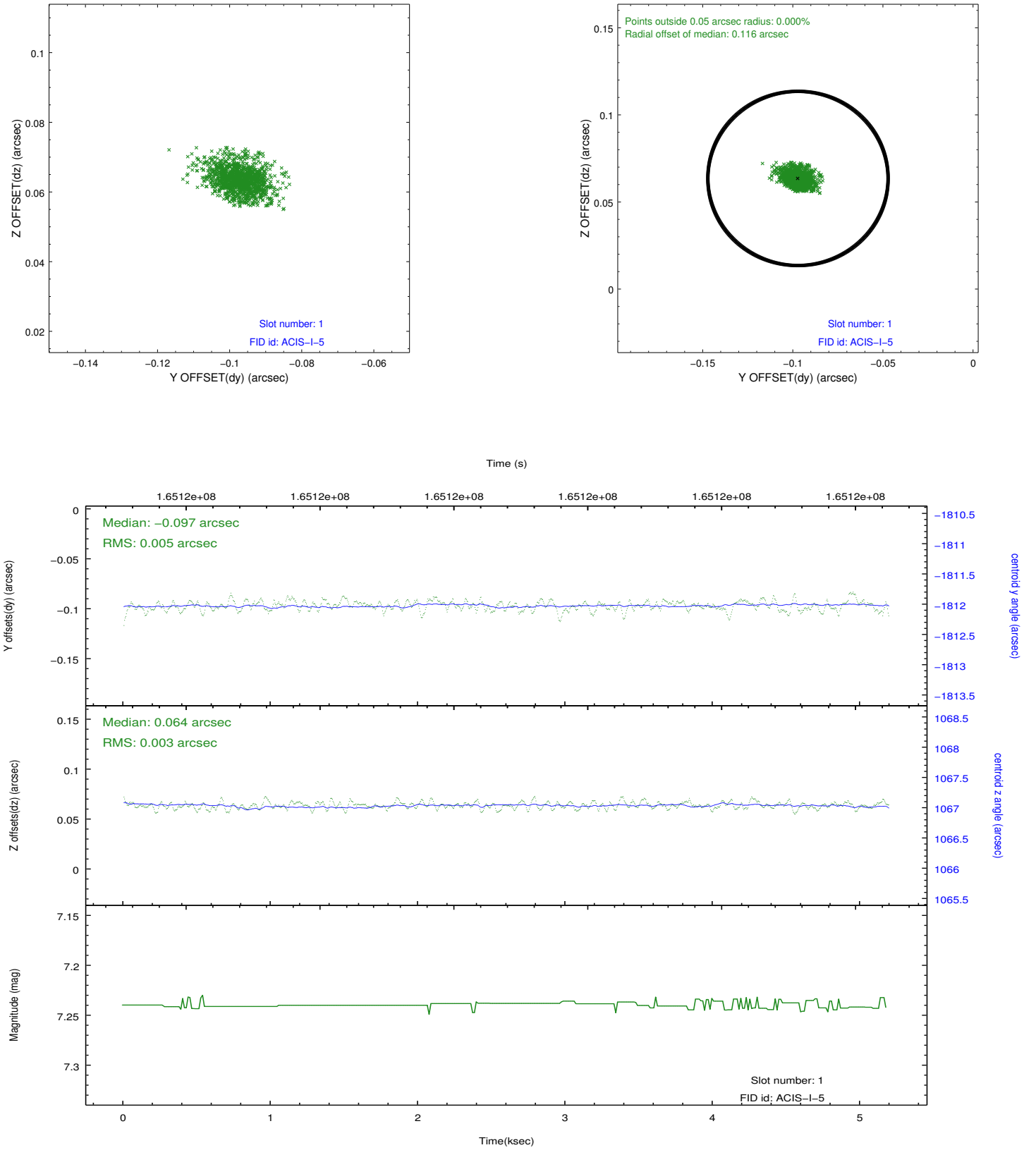


2.5 FID Slots

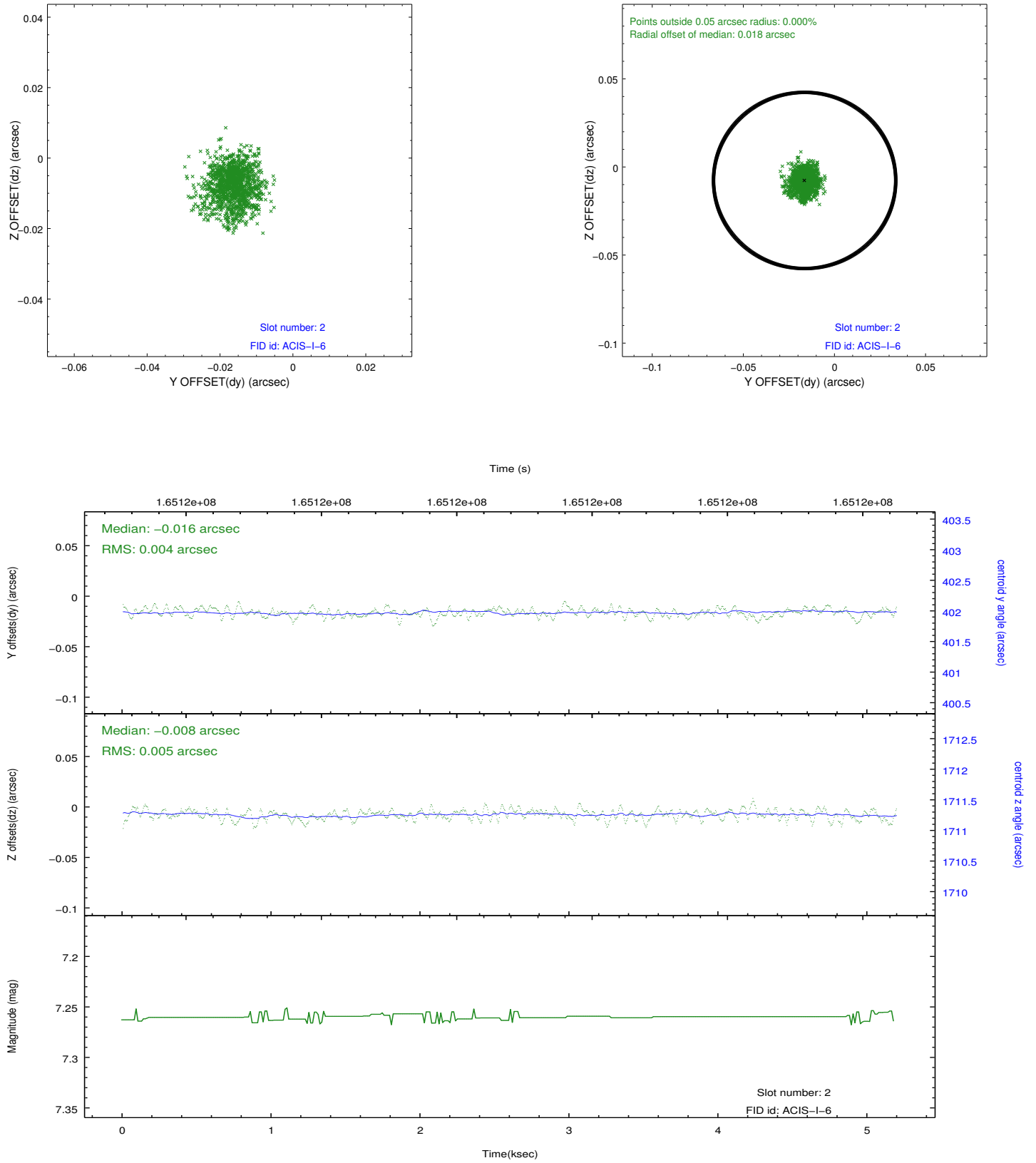
2.5.1 Slot 0



2.5.2 Slot 1



2.5.3 Slot 2



A Summary

A.1 Status

V&V Scientist	Jen Lauer
V&V Date (YYYY-MM-DD)	2012.11.09
V&V Edition	1
V&V Disposition and Status	OK
V&V Charge Time	4.773

A.2 Comments