

# V&V Reference Report

## L2 ASCDS Version : 7.6.8

Observation 3651 - L2 Version 001  
Chandra X-Ray Center

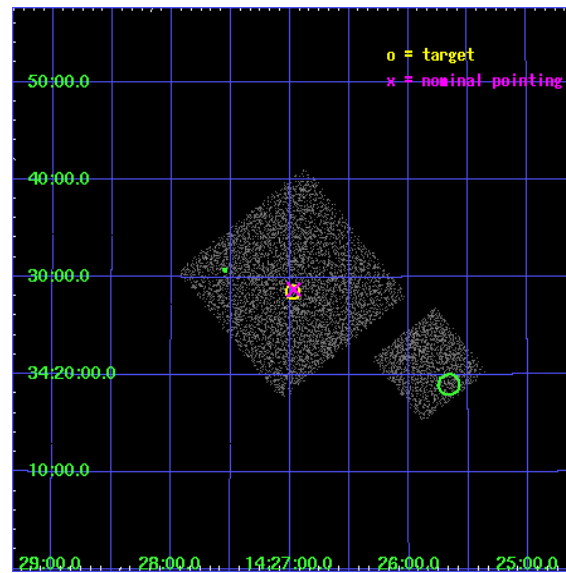
L2 Processing Date : Jul 29 2006

## Contents

<b>1</b>	<b>Front</b>	<b>2</b>
<b>2</b>	<b>OBI</b>	<b>3</b>
2.1	OBI . . . . .	3
2.1.1	Images . . . . .	3
2.1.2	Bias . . . . .	3
2.1.3	Parameters . . . . .	4
2.1.4	Events . . . . .	4
2.2	Compared Parameters . . . . .	5
2.3	Aspect . . . . .	6
2.4	Star Slots . . . . .	9
2.4.1	Slot 3 . . . . .	9
2.4.2	Slot 4 . . . . .	10
2.4.3	Slot 5 . . . . .	11
2.4.4	Slot 6 . . . . .	12
2.4.5	Slot 7 . . . . .	13
2.5	FID Slots . . . . .	14
2.5.1	Slot 0 . . . . .	14
2.5.2	Slot 1 . . . . .	15
2.5.3	Slot 2 . . . . .	16
<b>3</b>	<b>Point Sources</b>	<b>17</b>
<b>A</b>	<b>Summary</b>	<b>18</b>
A.1	Status . . . . .	18
A.2	Comments . . . . .	18

# 1 Front

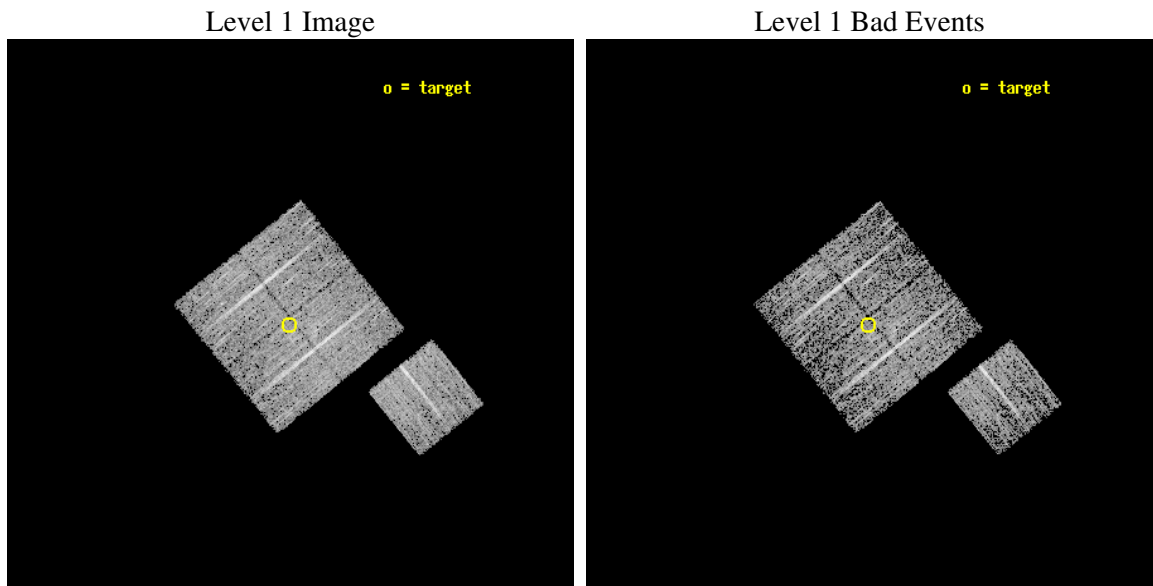
seq_num	900251
obs_id	3651
title	CHANDRA LARGE SCALE SURVEY OF THE NOAO BOOTES DEEP FIELD
observer	Dr. Stephen Murray
object	NOAO FIELD F32
dtcycle	0
cycle	P
ra_targ	216.744263
dec_targ	34.475388
ra_nom	216.74160556196
dec_nom	34.47940026667
roll_nom	141.01020165725
revision	2
ontime	4777.0999908149
livetime	4714.6836625851
ontime0	4777.0999908149
ontime1	4777.0999908149
ontime2	4777.0999908149
ontime3	4777.0999908149
ontime6	4773.959010601
l2events	9375



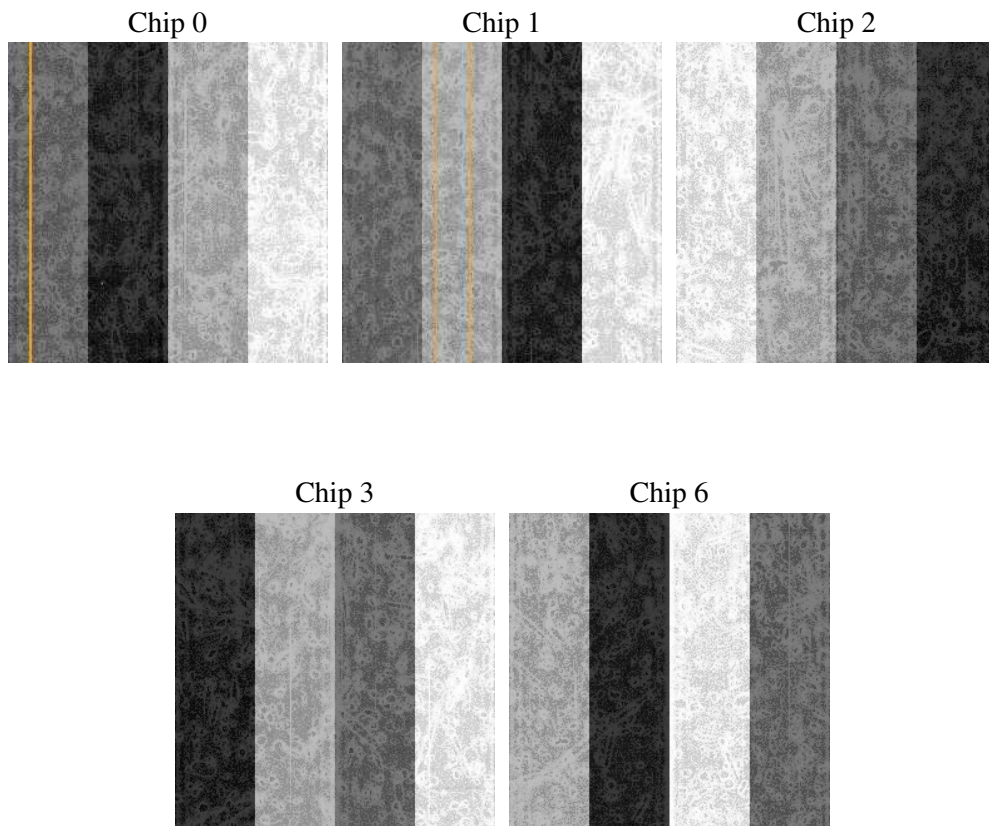
## 2 OBI

### 2.1 OBI

#### 2.1.1 Images



#### 2.1.2 Bias



### 2.1.3 Parameters

obi_num	0
ascdsver	7.6.8
caldsver	3.2.2
date	2006-07-29T16:53:23
revision	2

sched_exp_time	5000.000000
ontime	4780.6213014424
ontime0	4780.6213014424
ontime1	4780.6213014424
ontime2	4780.6213014424
ontime3	4780.6213014424
ontime6	4777.4803212285
l1events	119817

### 2.1.4 Events

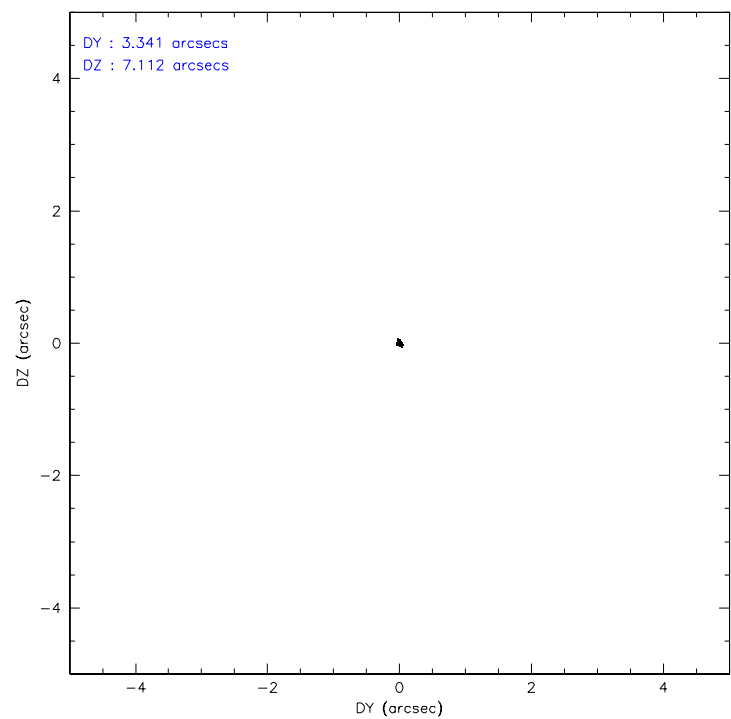
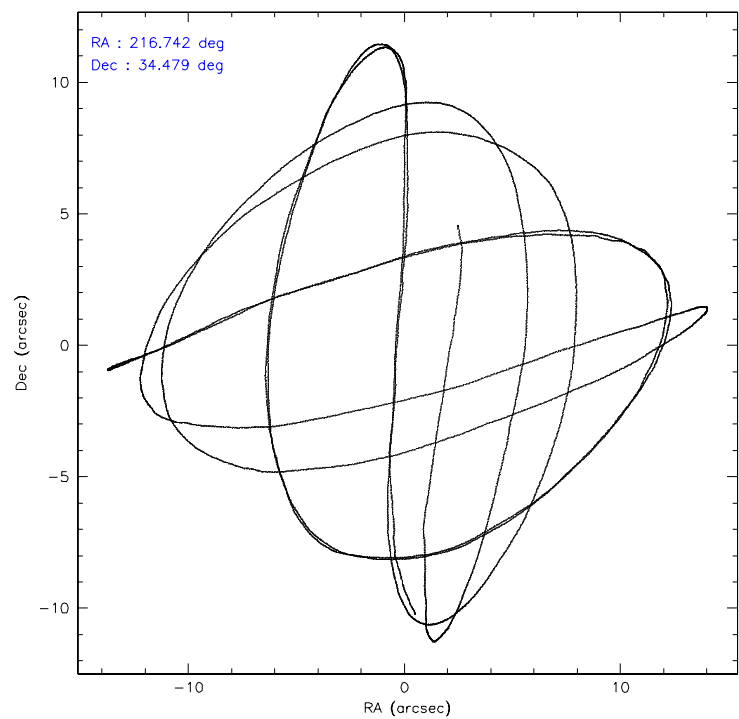
	ccd 0	ccd 1	ccd 2	ccd 3	ccd 6
level 1 events	22122	23558	25100	24028	25009
rejected events	19887	21115	22850	21843	22627
rejected %	89%	89%	91%	90%	90%

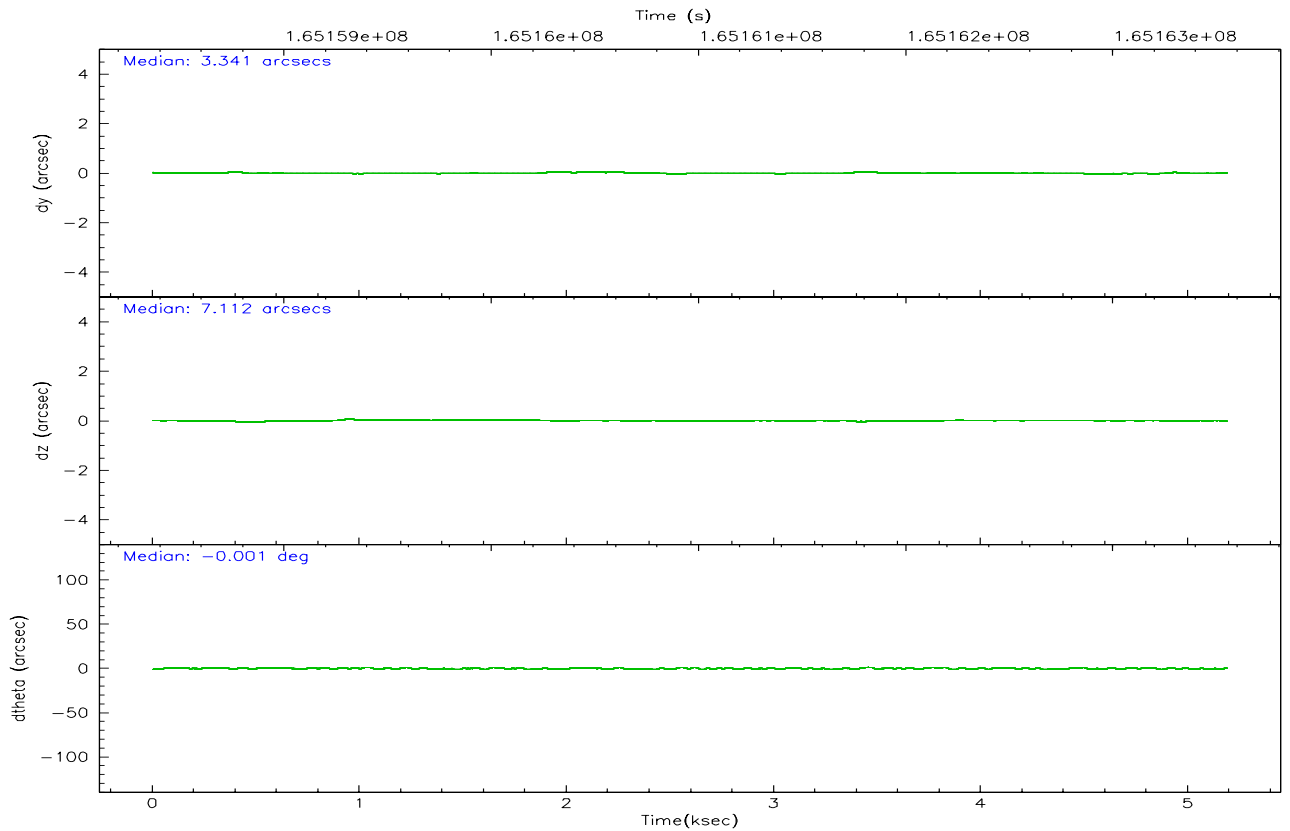
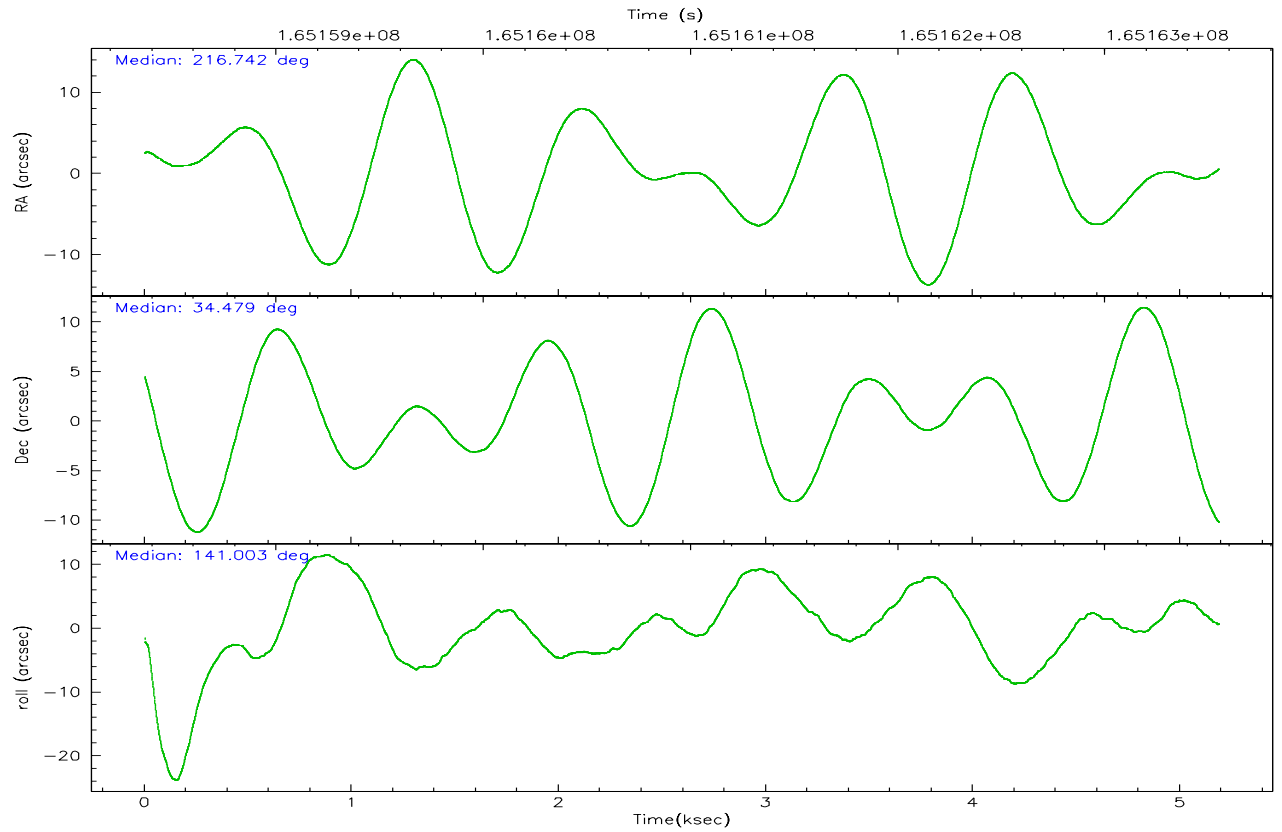
	ccd 0	ccd 1	ccd 2	ccd 3	ccd 6
grade 0 events	860	819	844	808	927
	3%	3%	3%	3%	3%
grade 1 events	3	8	12	15	13
	0%	0%	0%	0%	0%
grade 2 events	522	543	520	464	492
	2%	2%	2%	1%	1%
grade 3 events	249	320	254	274	229
	1%	1%	1%	1%	0%
grade 4 events	247	274	267	244	258
	1%	1%	1%	1%	1%
grade 5 events	617	767	691	771	765
	2%	3%	2%	3%	3%
grade 6 events	359	488	365	397	479
	1%	2%	1%	1%	1%
grade 7 events	19265	20339	22147	21055	21846
	87%	86%	88%	87%	87%

## 2.2 Compared Parameters

Parameter	Planned	Actual	Parameter	Planned	Actual
Instrument	ACIS	ACIS	Obspar format version number	6	6
Detector	ACIS-01236	ACIS-01236	Obspar file type	PREDICTED	ACTUAL
Grating	NONE	NONE	Obspar update status	NONE	UPDATED
Data mode	VFAINT	VFAINT	On-chip summing requested	N	N
Observation mode	POINTING	POINTING	Subarray requested	NONE	NONE
Pointing RA	216.774452	216.7416055619595	Alternating exposures requested	N	N
Pointing Dec	34.475306	34.47940026666976	Primary exposure time	0.000000	3.1
Pointing Roll	140.782909	141.0102016572527			
SIM focus pos (mm)	-0.782348	-0.7809083437167272			
SIM defocus (mm)	0	0.001439871863259334			
SIM translation stage pos (mm)	-233.592463	-233.5874344608287			
SIM translation stage offset (mm)	0	-0.005018542100998502			
Observation start time	165158559.184000	165158183.34014			
Observation start date	2003-03-27T13:21:35	2003-03-27T13:16:23			
Observation end time	165163559.184000	165163693.74038			
Observation end date	2003-03-27T14:44:55	2003-03-27T14:48:13			
Read mode	TIMED	TIMED			

### 2.3 Aspect





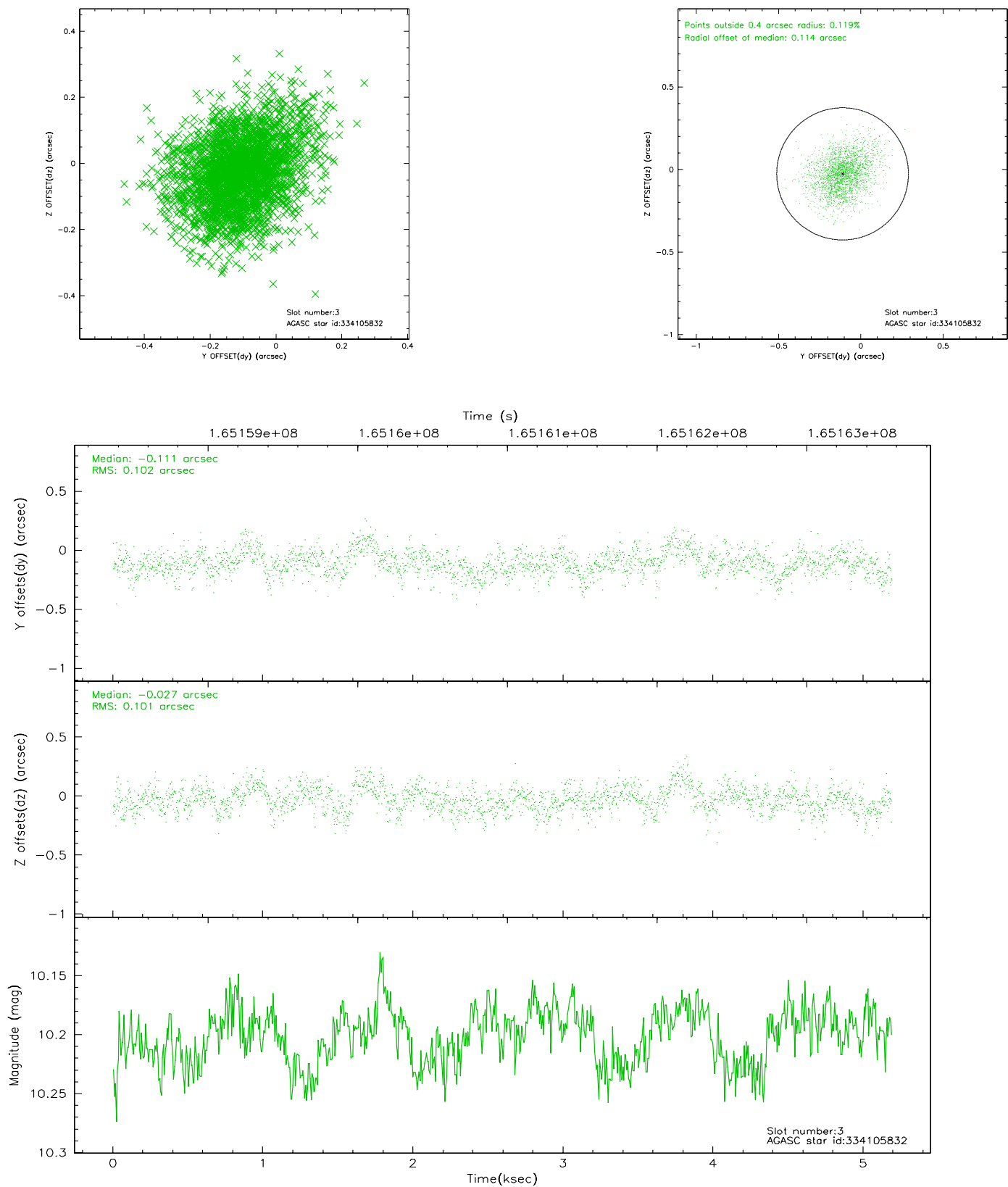
### Slot Statistics

slot	status	id	mag	n_pts	med_dy	med_dz	dr1	dr2	ra	dec	mean_y	mean_z
0	FID	ACIS-I-1	7.25	1266	0.000	0.040	0.006	0.010	0.000000	0.000000	936.43	-830.48
1	FID	ACIS-I-5	7.24	1266	-0.061	0.055	0.005	0.009	0.000000	0.000000	-1811.06	1066.48
2	FID	ACIS-I-6	7.26	1266	-0.031	-0.024	0.007	0.010	0.000000	0.000000	400.72	1712.19
3	GUIDE	334105832	10.20	2531	-0.111	-0.027	0.151	0.257	215.847735	34.556918	2322.51	1499.88
4	GUIDE	335021128	9.36	2531	0.187	0.072	0.093	0.158	216.159551	34.422539	1299.46	1298.01
5	GUIDE	335024096	10.60	2520	-0.083	-0.051	0.149	0.242	216.160719	34.374830	1188.30	1429.33
6	GUIDE	335028336	9.48	2530	0.008	0.012	0.096	0.151	217.189840	34.665629	-517.07	-1310.14
7	GUIDE	335030384	8.83	2528	-0.001	0.000	0.076	0.129	216.806407	34.722197	489.00	-749.09

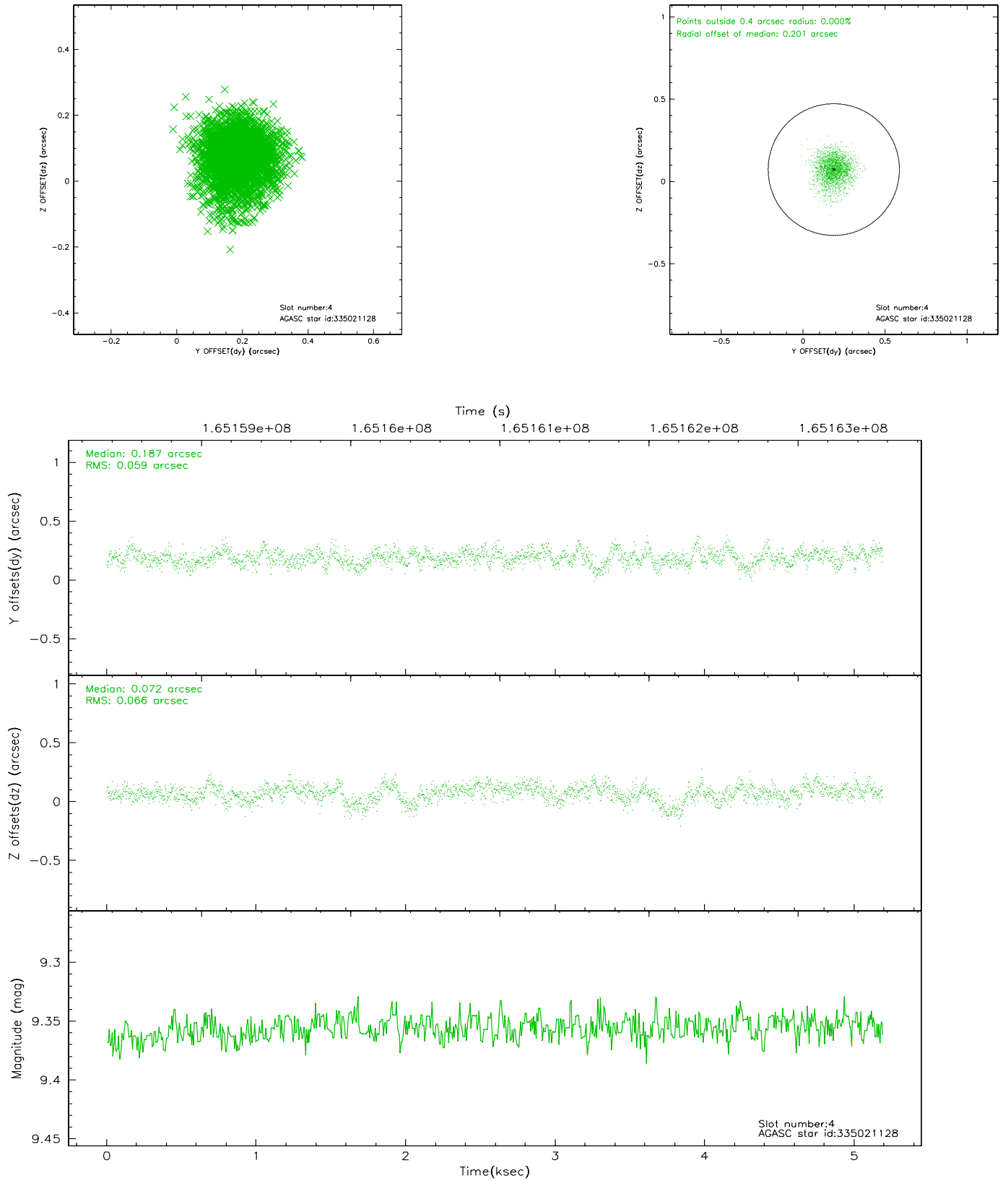


## 2.4 Star Slots

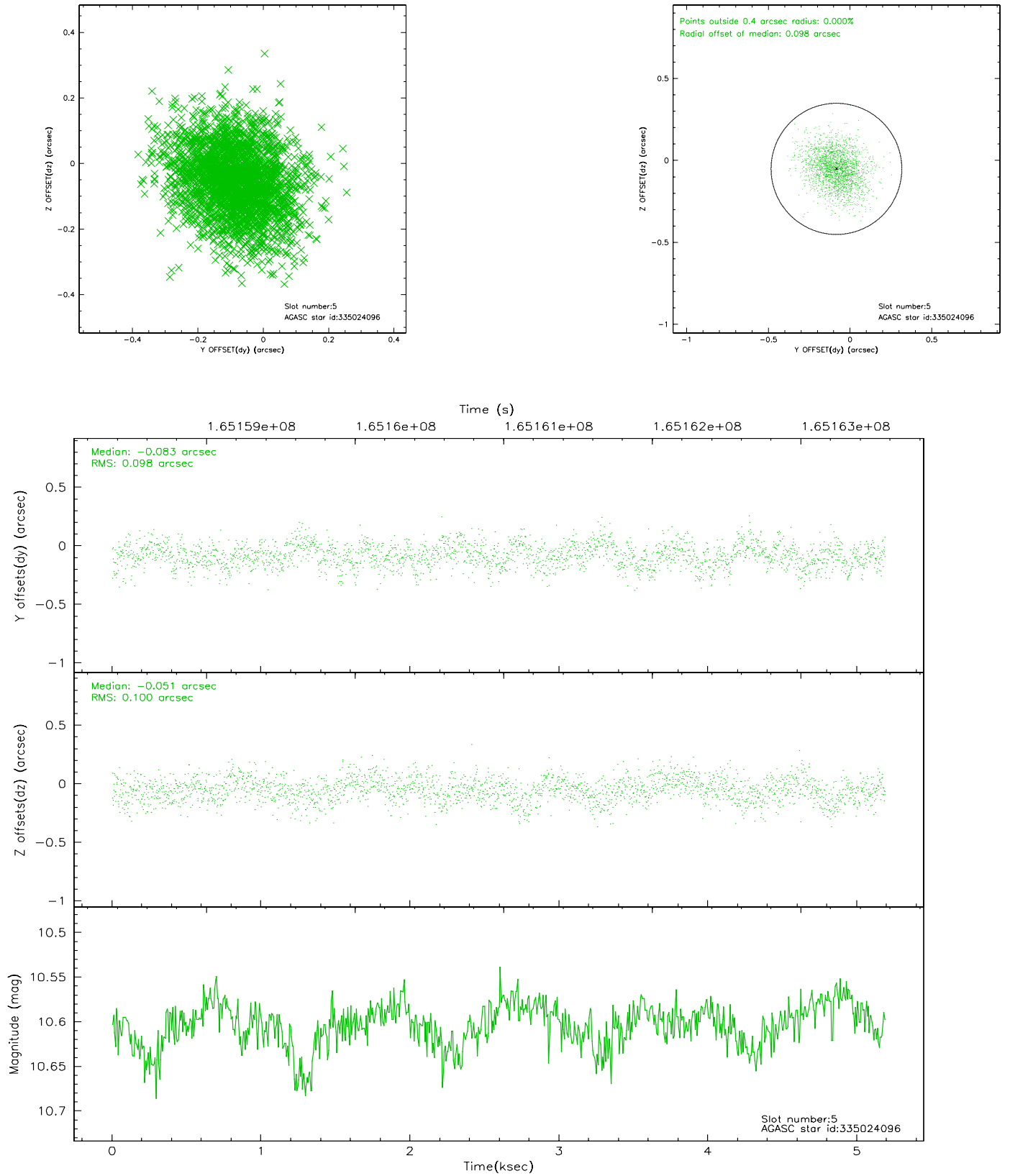
### 2.4.1 Slot 3



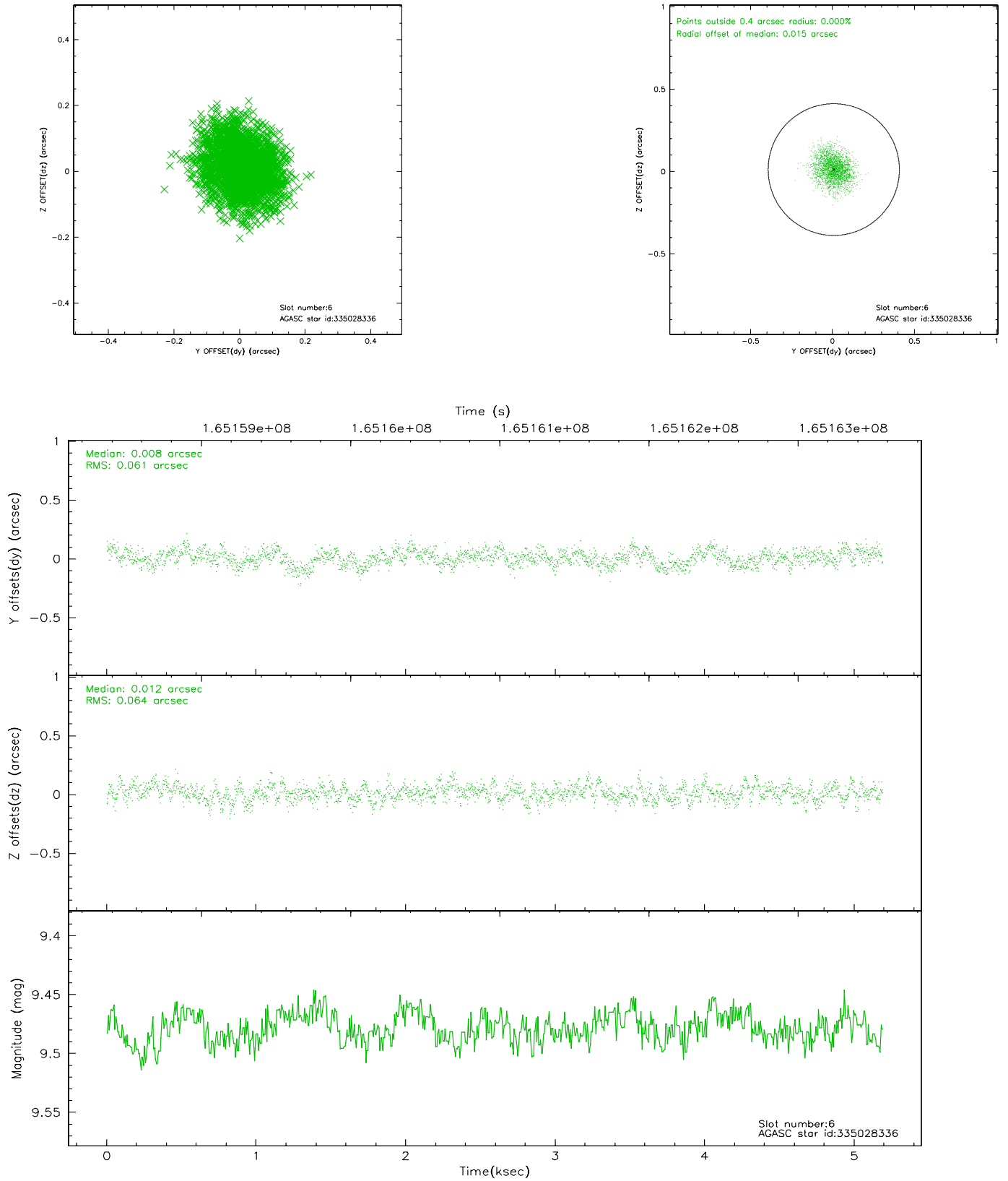
## 2.4.2 Slot 4



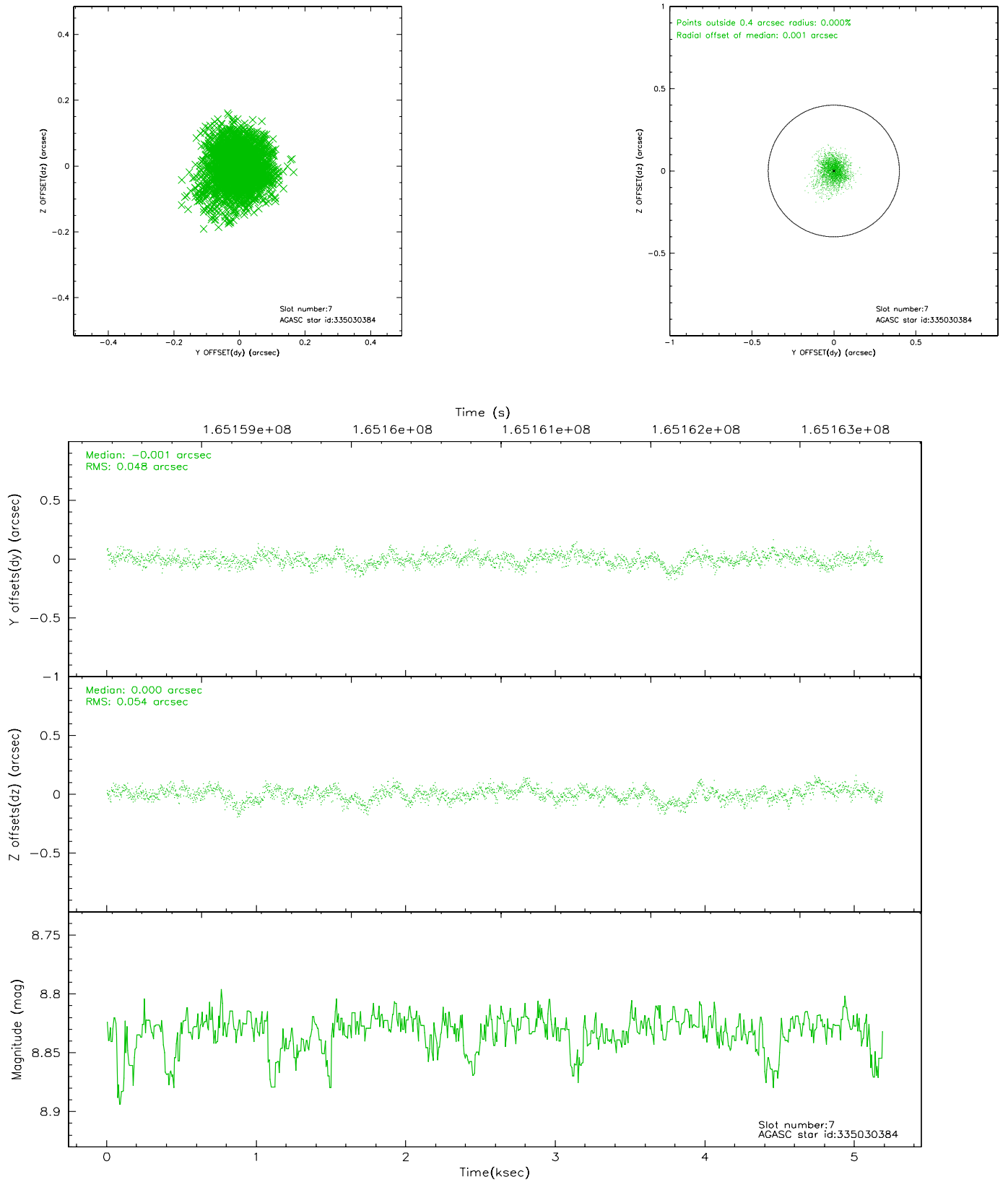
### 2.4.3 Slot 5



## 2.4.4 Slot 6

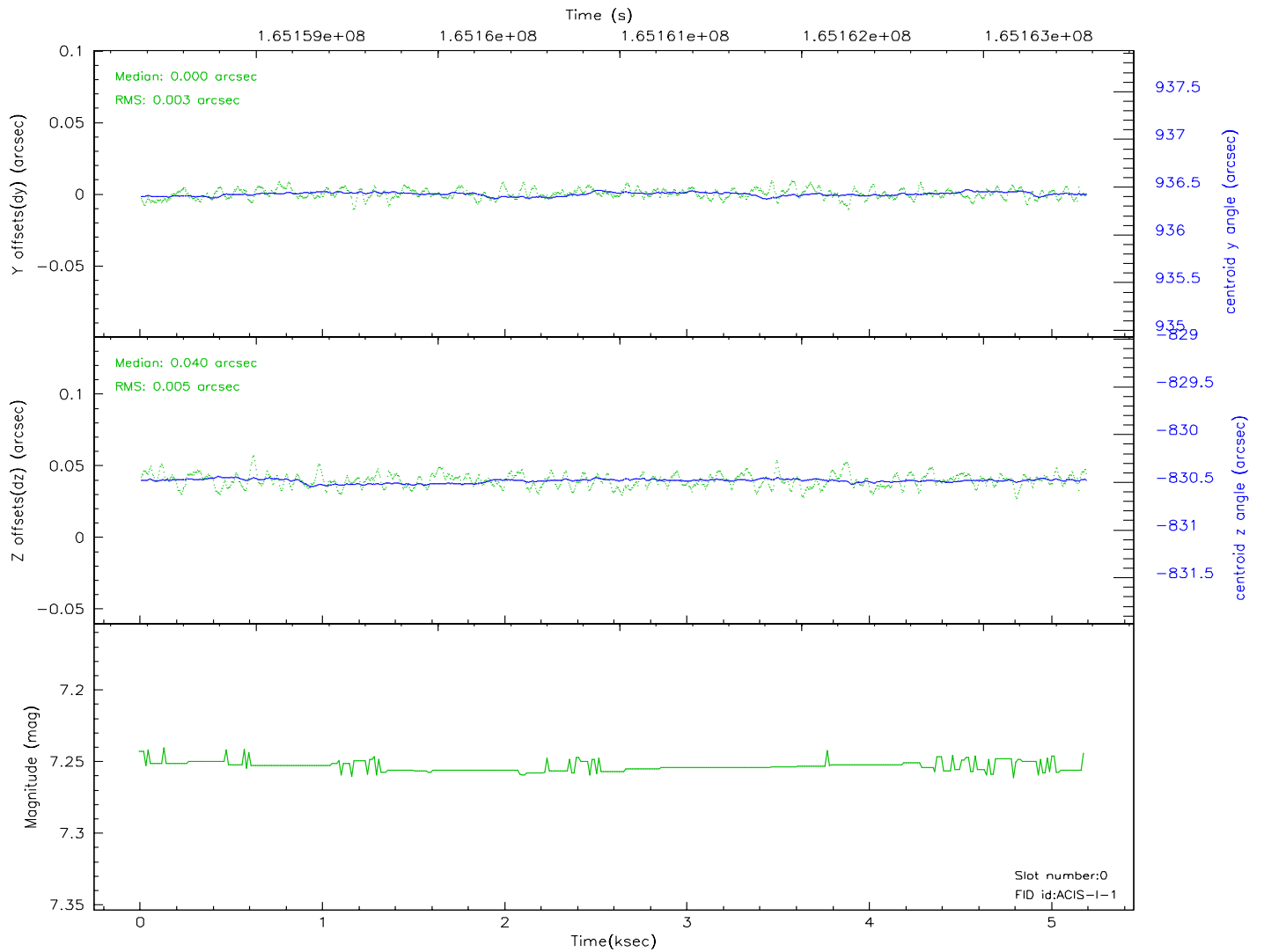
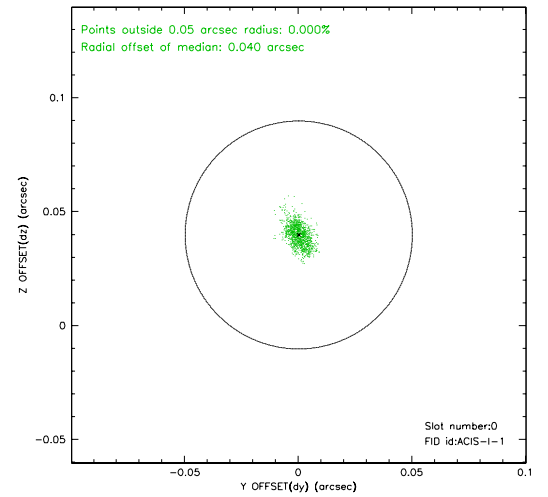
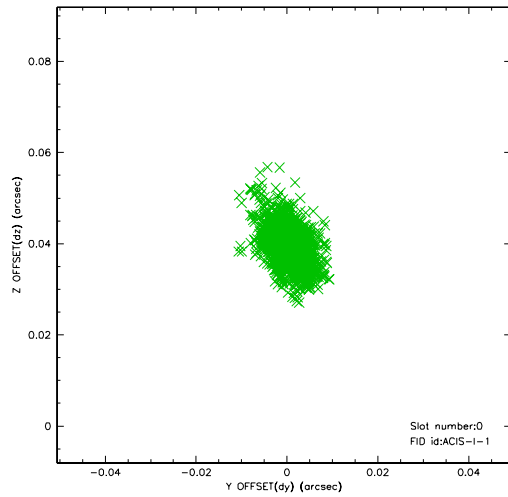


## 2.4.5 Slot 7

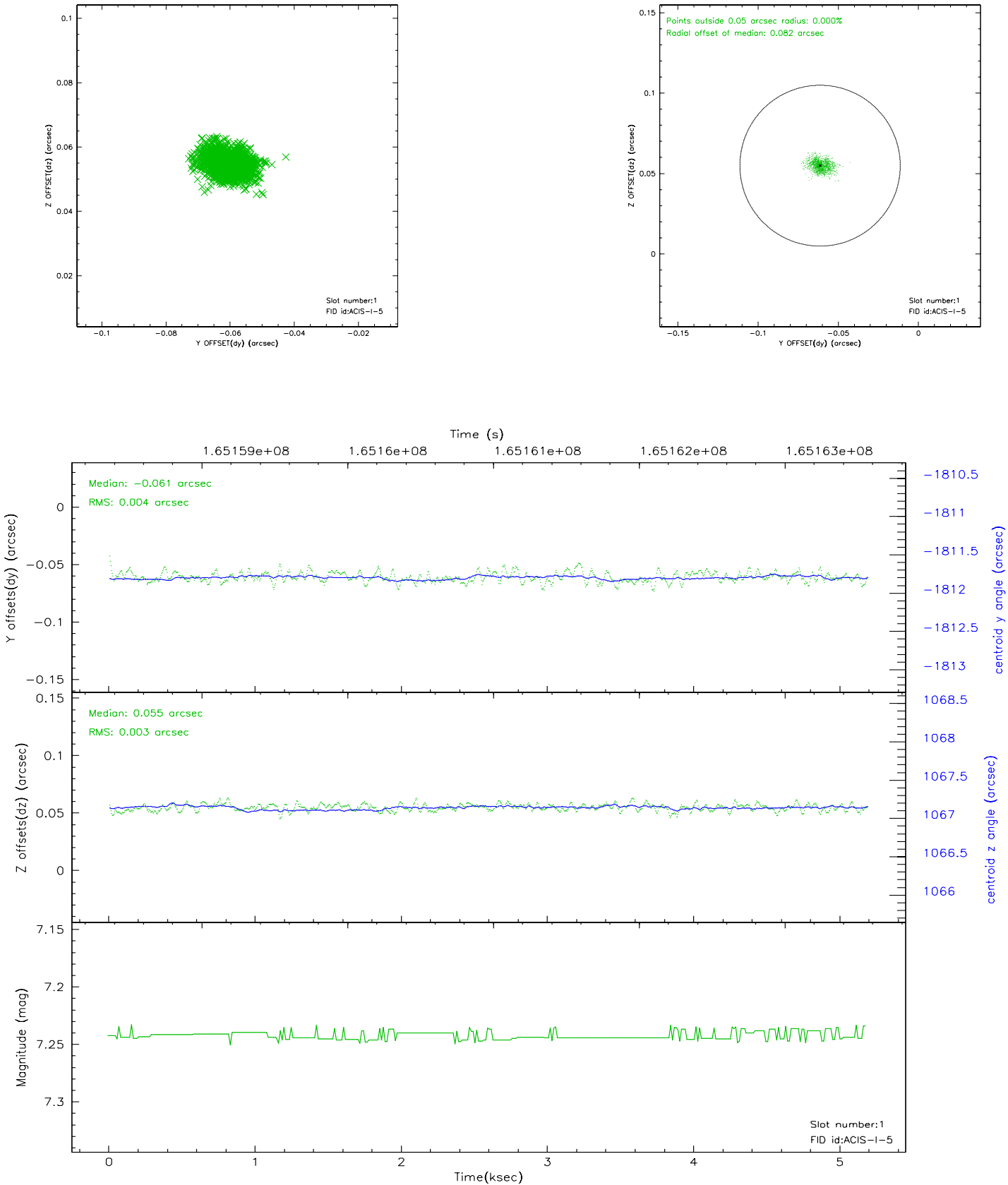


## 2.5 FID Slots

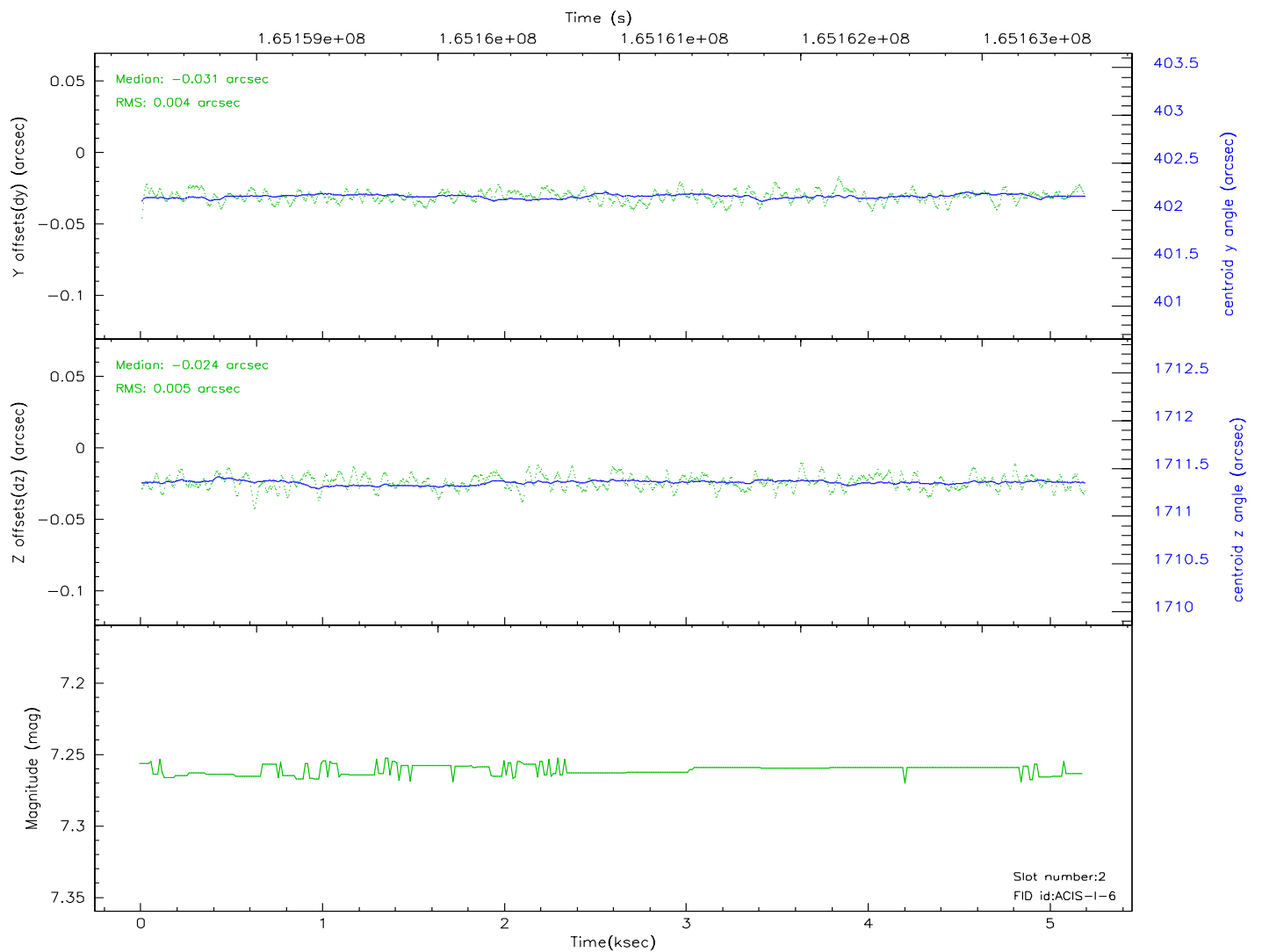
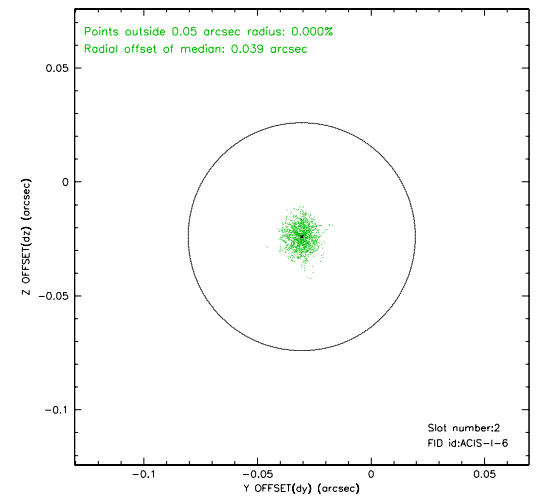
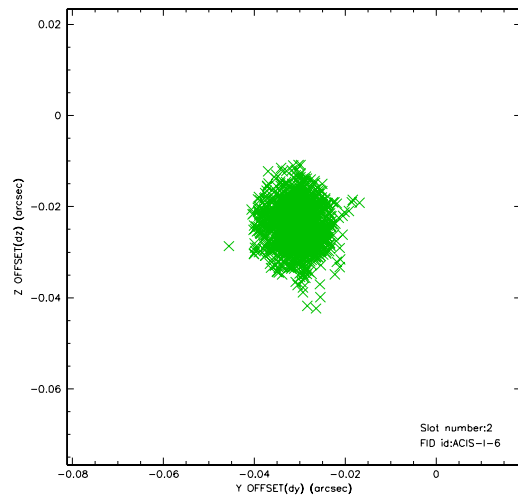
### 2.5.1 Slot 0



2.5.2 Slot 1



### 2.5.3 Slot 2





### 3 Point Sources

7.37 arcmin



## A Summary

### A.1 Status

V&V Scientist	Jen Lauer
V&V Date (YYYY-MM-DD)	2006.07.30
V&V Edition	1
V&V Disposition and Status	OK
V&V Charge Time	4.777

### A.2 Comments