

# V&V Reference Report

## L2 ASCDS Version : 7.6.8

Observation 3641 - L2 Version 001  
Chandra X-Ray Center

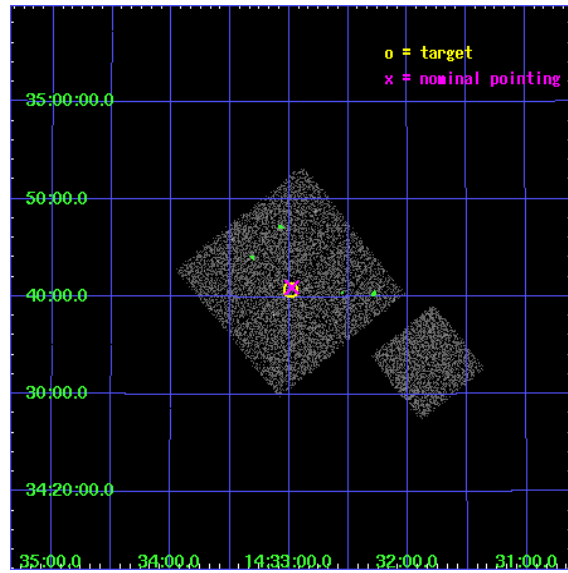
L2 Processing Date : Jul 29 2006

## Contents

<b>1</b>	<b>Front</b>	<b>2</b>
<b>2</b>	<b>OBI</b>	<b>3</b>
2.1	OBI . . . . .	3
2.1.1	Images . . . . .	3
2.1.2	Bias . . . . .	3
2.1.3	Parameters . . . . .	4
2.1.4	Events . . . . .	4
2.2	Compared Parameters . . . . .	5
2.3	Aspect . . . . .	6
2.4	Star Slots . . . . .	9
2.4.1	Slot 3 . . . . .	9
2.4.2	Slot 4 . . . . .	10
2.4.3	Slot 5 . . . . .	11
2.4.4	Slot 6 . . . . .	12
2.4.5	Slot 7 . . . . .	13
2.5	FID Slots . . . . .	14
2.5.1	Slot 0 . . . . .	14
2.5.2	Slot 1 . . . . .	15
2.5.3	Slot 2 . . . . .	16
<b>3</b>	<b>Point Sources</b>	<b>17</b>
<b>A</b>	<b>Summary</b>	<b>18</b>
A.1	Status . . . . .	18
A.2	Comments . . . . .	18

# 1 Front

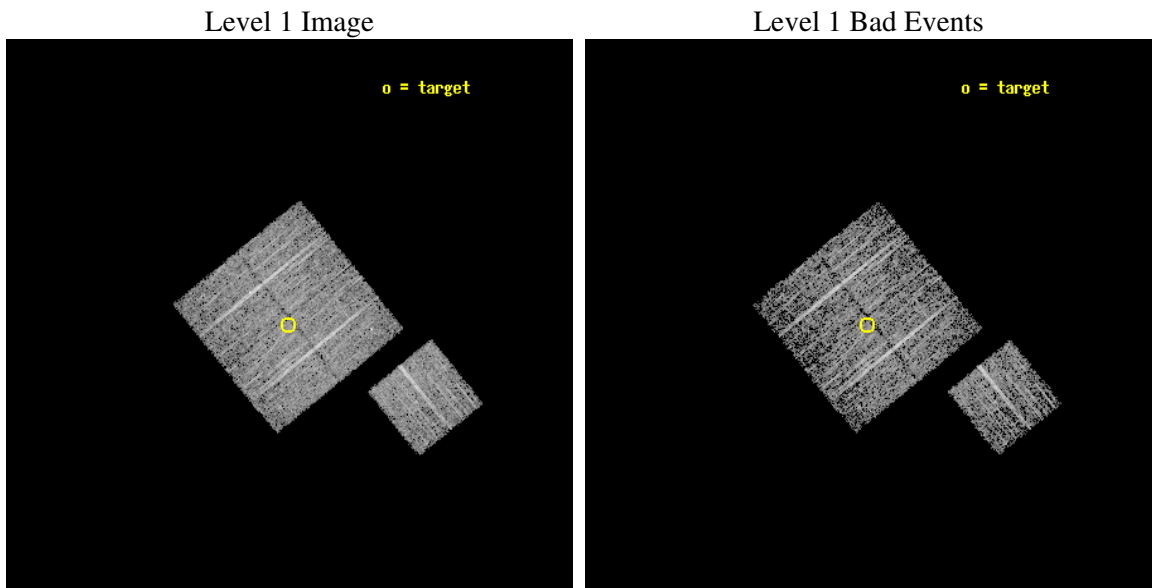
seq_num	900241
obs_id	3641
title	CHANDRA LARGE SCALE SURVEY OF THE NOAO BOOTES DEEP FIELD
observer	Dr. Stephen Murray
object	NOAO FIELD F52
dtcycle	0
cycle	P
ra_targ	218.246914
dec_targ	34.679082
ra_nom	218.24427246867
dec_nom	34.683069891895
roll_nom	141.01018751799
revision	2
ontime	4773.9590205848
livetime	4711.5837314434
ontime0	4777.0999908149
ontime1	4777.0999908149
ontime2	4773.9589906633
ontime3	4773.9590205848
ontime6	4777.0999908149
l2events	15019



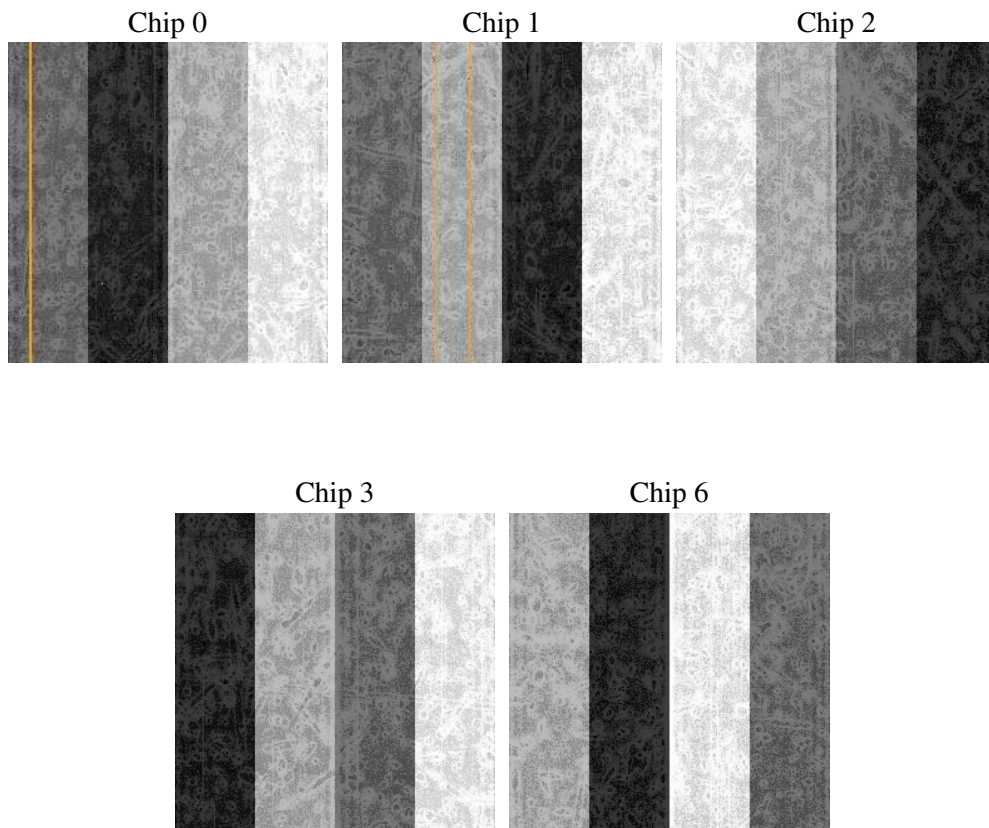
## 2 OBI

### 2.1 OBI

#### 2.1.1 Images



#### 2.1.2 Bias



### 2.1.3 Parameters

obi_num	1
ascdsver	7.6.8
caldbver	3.2.2
date	2006-07-29T23:01:40
revision	2

sched_exp_time	5000.000000
ontime	4777.4752013683
ontime0	4780.6161715984
ontime1	4780.6161715984
ontime2	4777.4751714468
ontime3	4777.4752013683
ontime6	4780.6161715984
l1events	128656

### 2.1.4 Events

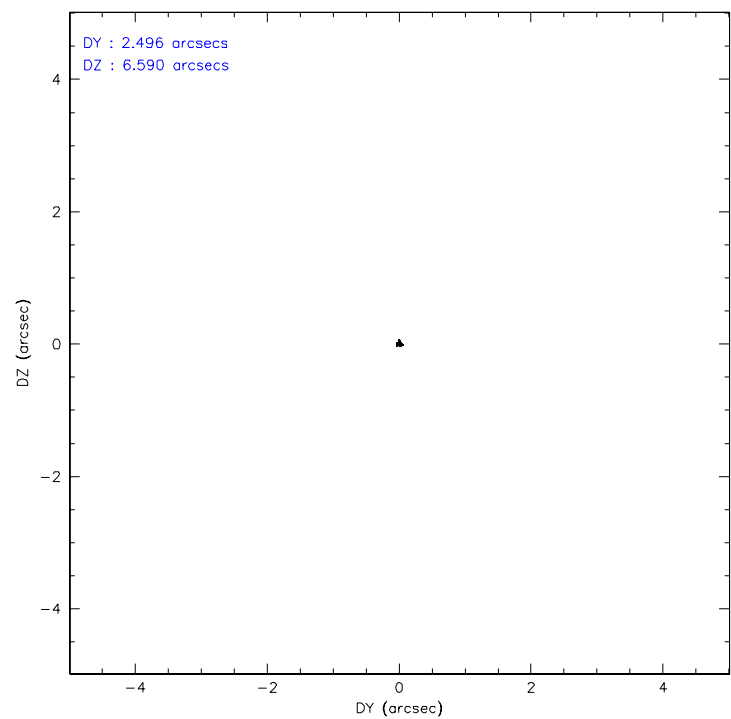
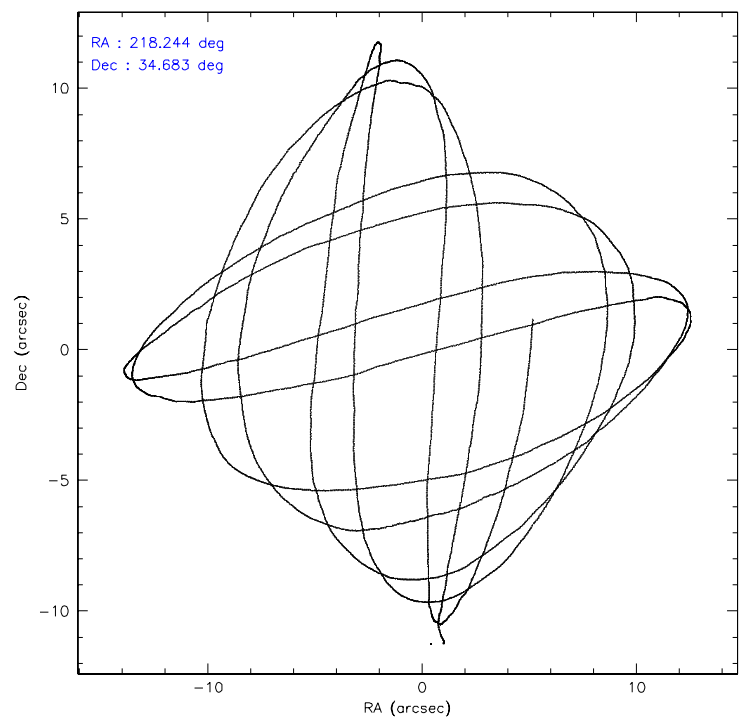
	<b>ccd 0</b>	<b>ccd 1</b>	<b>ccd 2</b>	<b>ccd 3</b>	<b>ccd 6</b>
level 1 events	26465	23273	25780	26942	26196
rejected events	23087	19685	22349	23580	22619
rejected %	87%	84%	86%	87%	86%

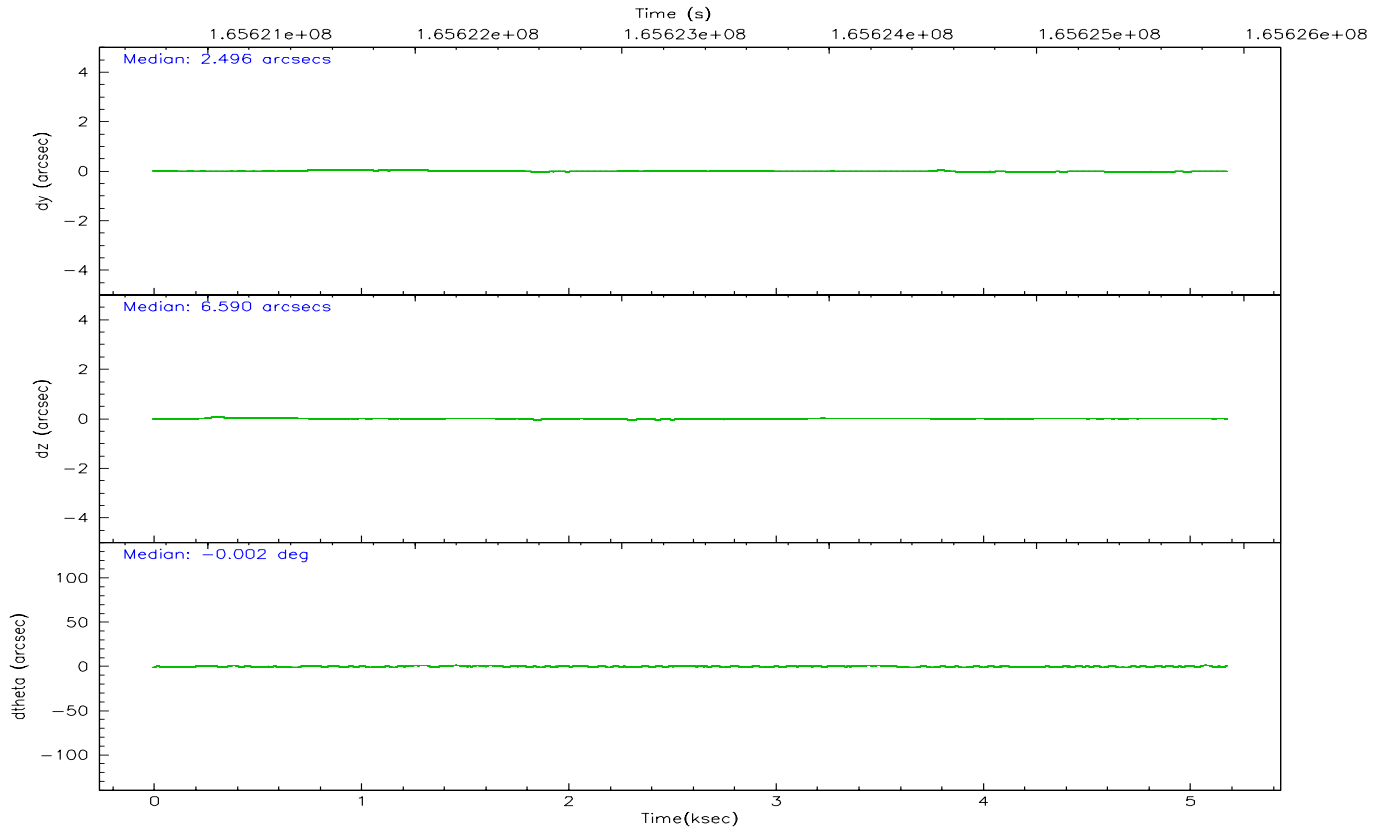
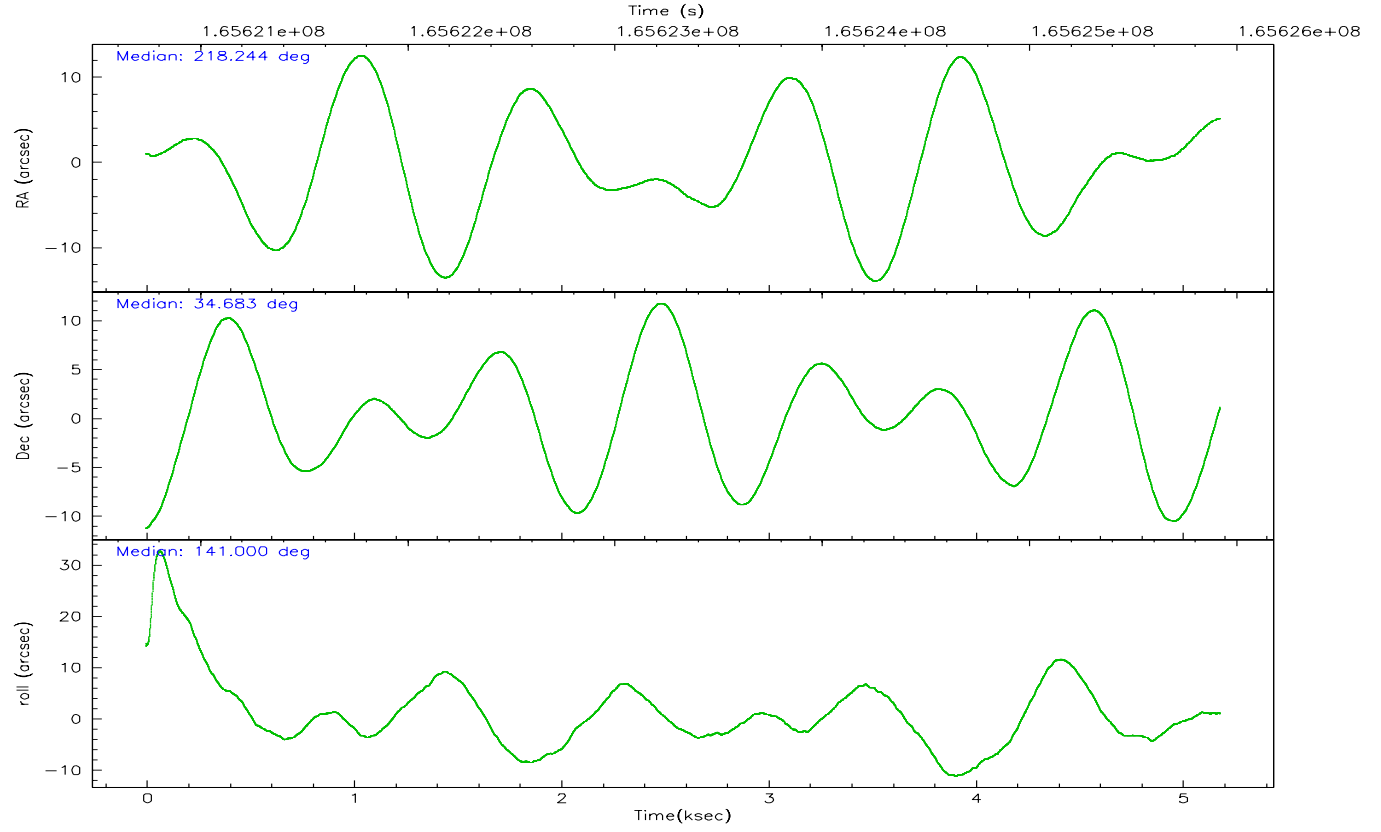
	<b>ccd 0</b>	<b>ccd 1</b>	<b>ccd 2</b>	<b>ccd 3</b>	<b>ccd 6</b>
grade 0 events	1387	1453	1582	1429	1523
	5%	6%	6%	5%	5%
grade 1 events	11	13	13	8	9
	0%	0%	0%	0%	0%
grade 2 events	685	733	640	635	646
	2%	3%	2%	2%	2%
grade 3 events	346	345	301	338	324
	1%	1%	1%	1%	1%
grade 4 events	312	347	335	311	339
	1%	1%	1%	1%	1%
grade 5 events	735	772	619	721	822
	2%	3%	2%	2%	3%
grade 6 events	650	711	574	650	747
	2%	3%	2%	2%	2%
grade 7 events	22339	18899	21716	22850	21786
	84%	81%	84%	84%	83%

## 2.2 Compared Parameters

Parameter	Planned	Actual	Parameter	Planned	Actual
Instrument	ACIS	ACIS	Obspar format version number	6	6
Detector	ACIS-01236	ACIS-01236	Obspar file type	PREDICTED	ACTUAL
Grating	NONE	NONE	Obspar update status	NONE	UPDATED
Data mode	VFAINT	VFAINT	On-chip summing requested	N	N
Observation mode	POINTING	POINTING	Subarray requested	NONE	NONE
Pointing RA	218.277177	218.2442724686689	Alternating exposures requested	N	N
Pointing Dec	34.678999	34.68306989189541	Primary exposure time	0.000000	3.1
Pointing Roll	140.782780	141.0101875179946			
SIM focus pos (mm)	-0.782348	-0.7809083437167272			
SIM defocus (mm)	0	0.001439871863259334			
SIM translation stage pos (mm)	-233.592463	-233.5874344608287			
SIM translation stage offset (mm)	0	-0.005018542100998502			
Observation start time	165620913.184000	165620536.77214			
Observation start date	2003-04-01T21:47:29	2003-04-01T21:42:16			
Observation end time	165625913.184000	165626046.65987			
Observation end date	2003-04-01T23:10:49	2003-04-01T23:14:06			
Read mode	TIMED	TIMED			

2.3 Aspect



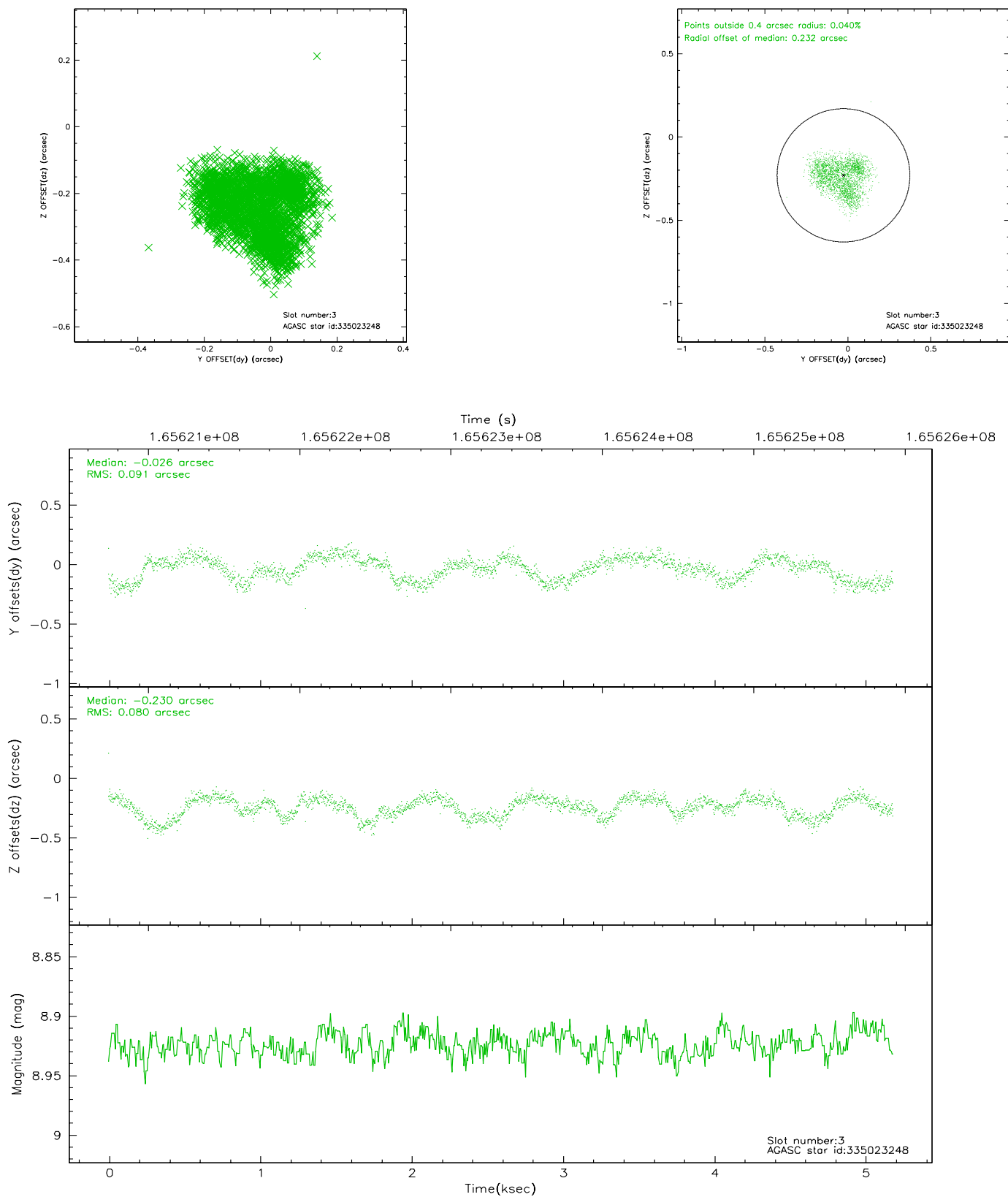


### Slot Statistics

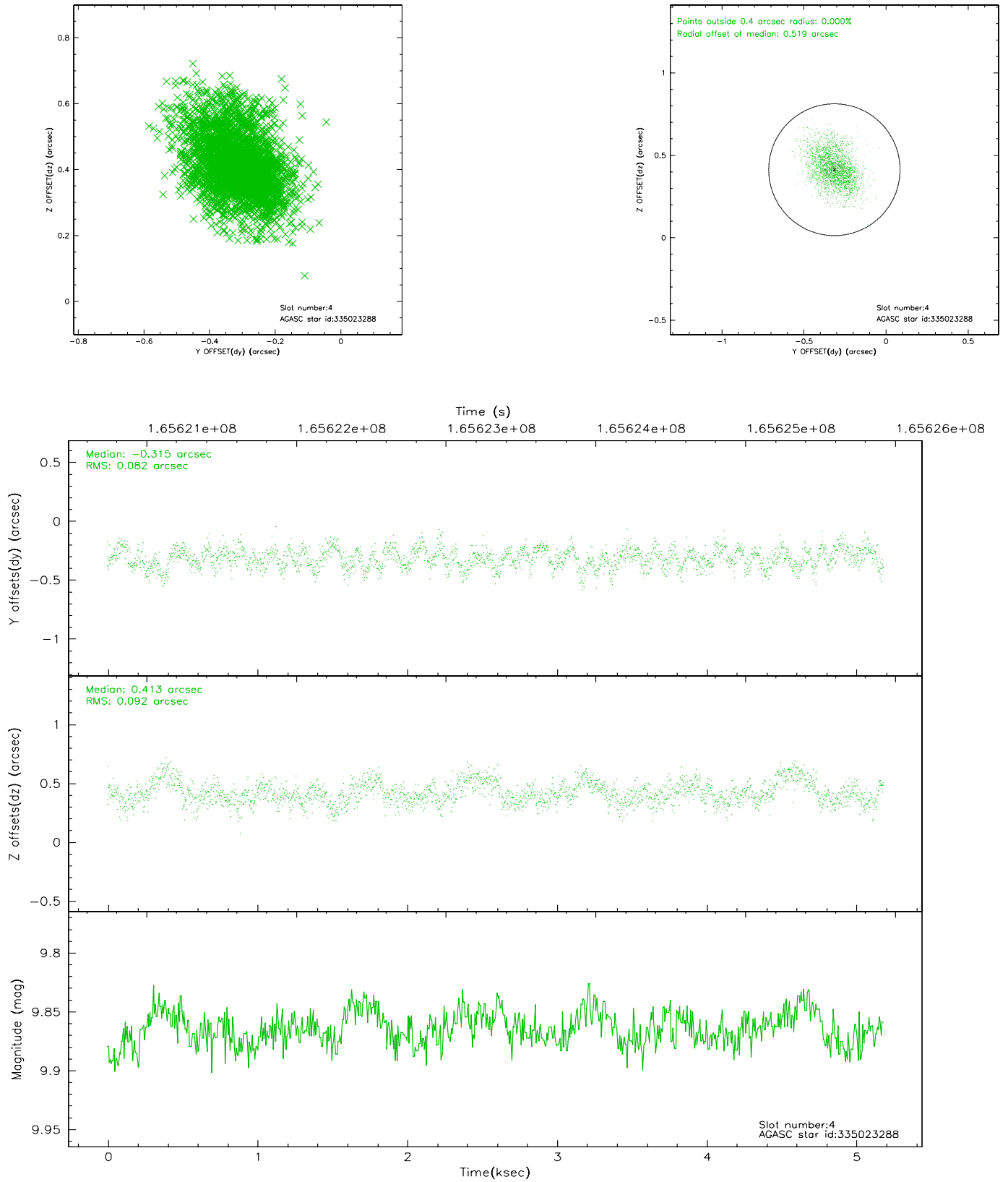
slot	status	id	mag	n_pts	med_dy	med_dz	dr1	dr2	ra	dec	mean_y	mean_z
0	FID	ACIS-I-1	7.25	1265	-0.049	-0.025	0.008	0.014	0.000000	0.000000	937.26	-830.01
1	FID	ACIS-I-4	7.18	1265	0.028	0.064	0.007	0.011	0.000000	0.000000	2158.05	1069.30
2	FID	ACIS-I-5	7.23	1265	-0.078	0.031	0.006	0.011	0.000000	0.000000	-1809.25	1068.48
3	GUIDE	335023248	8.92	2527	-0.026	-0.230	0.133	0.191	217.634832	34.944512	2077.05	453.13
4	GUIDE	335023288	9.86	2529	-0.315	0.413	0.132	0.216	217.791365	34.425735	544.07	1616.29
5	GUIDE	335025040	9.91	2529	0.078	-0.048	0.105	0.173	218.601670	34.305240	-1596.74	431.28
6	GUIDE	335026200	10.71	2452	0.243	-0.196	0.175	0.289	218.096425	34.160577	-762.64	1785.78
7	GUIDE	335153056	10.18	2513	0.037	0.052	0.158	0.252	219.264627	34.869152	-1817.30	-2385.26

## 2.4 Star Slots

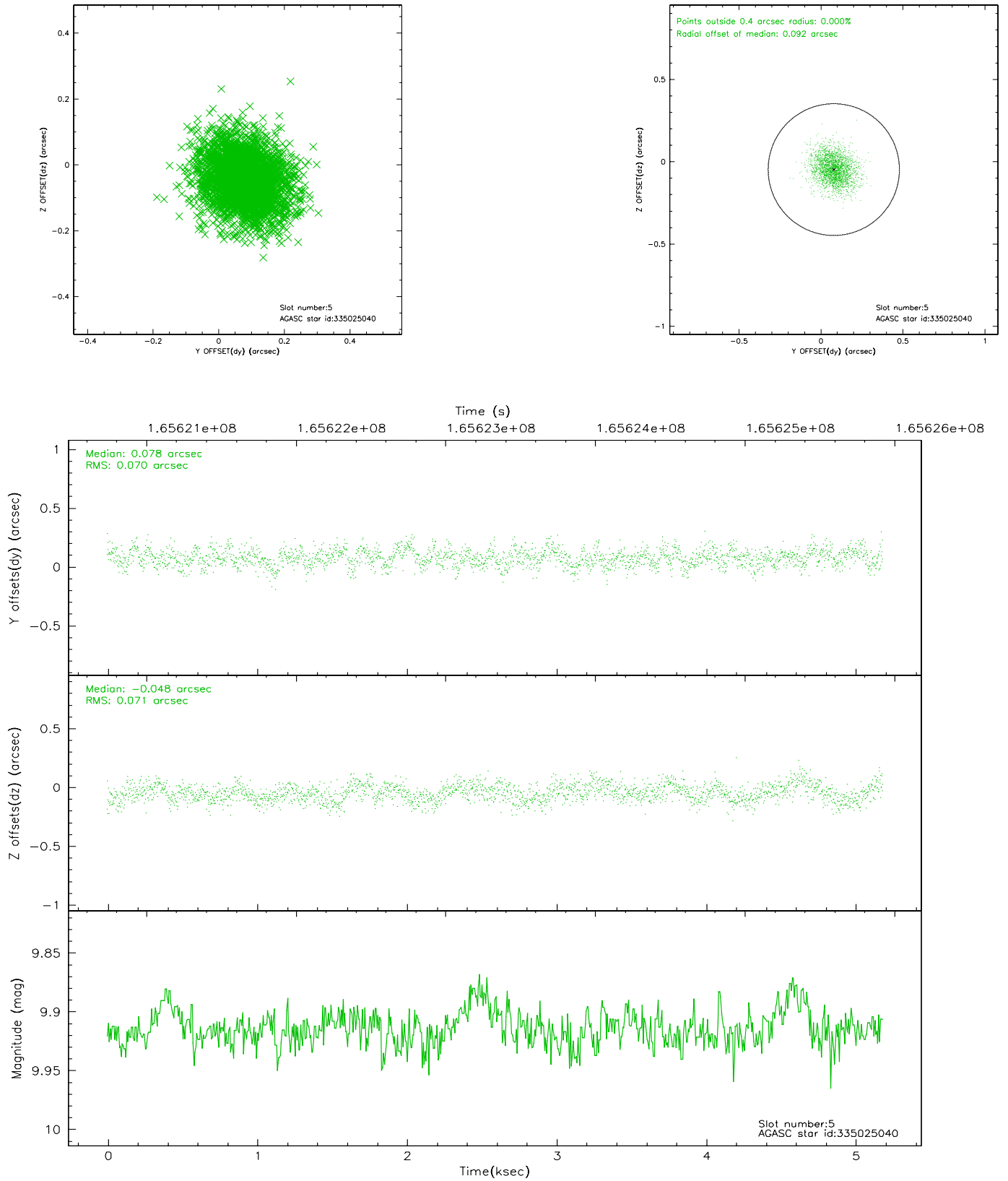
### 2.4.1 Slot 3



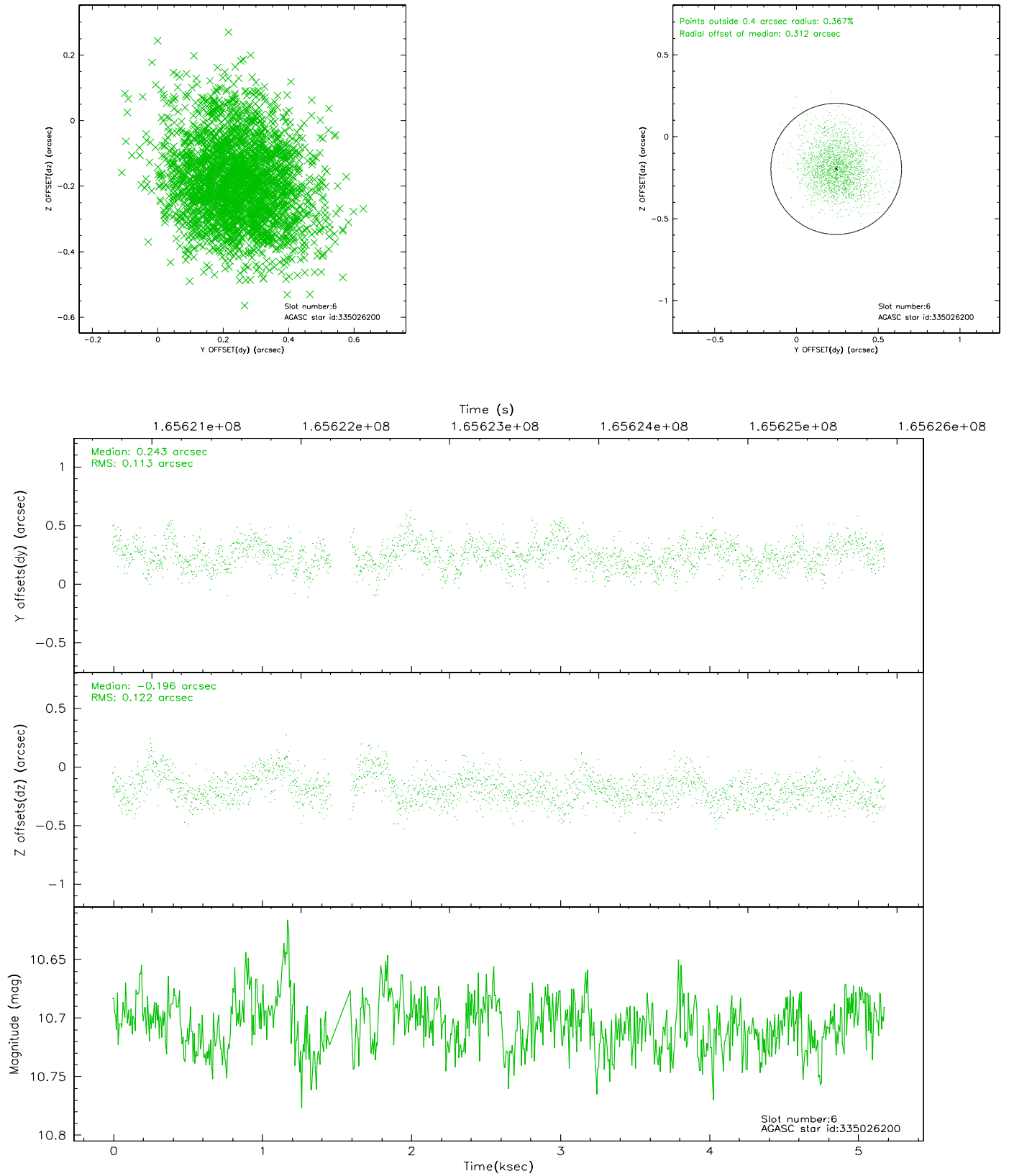
## 2.4.2 Slot 4



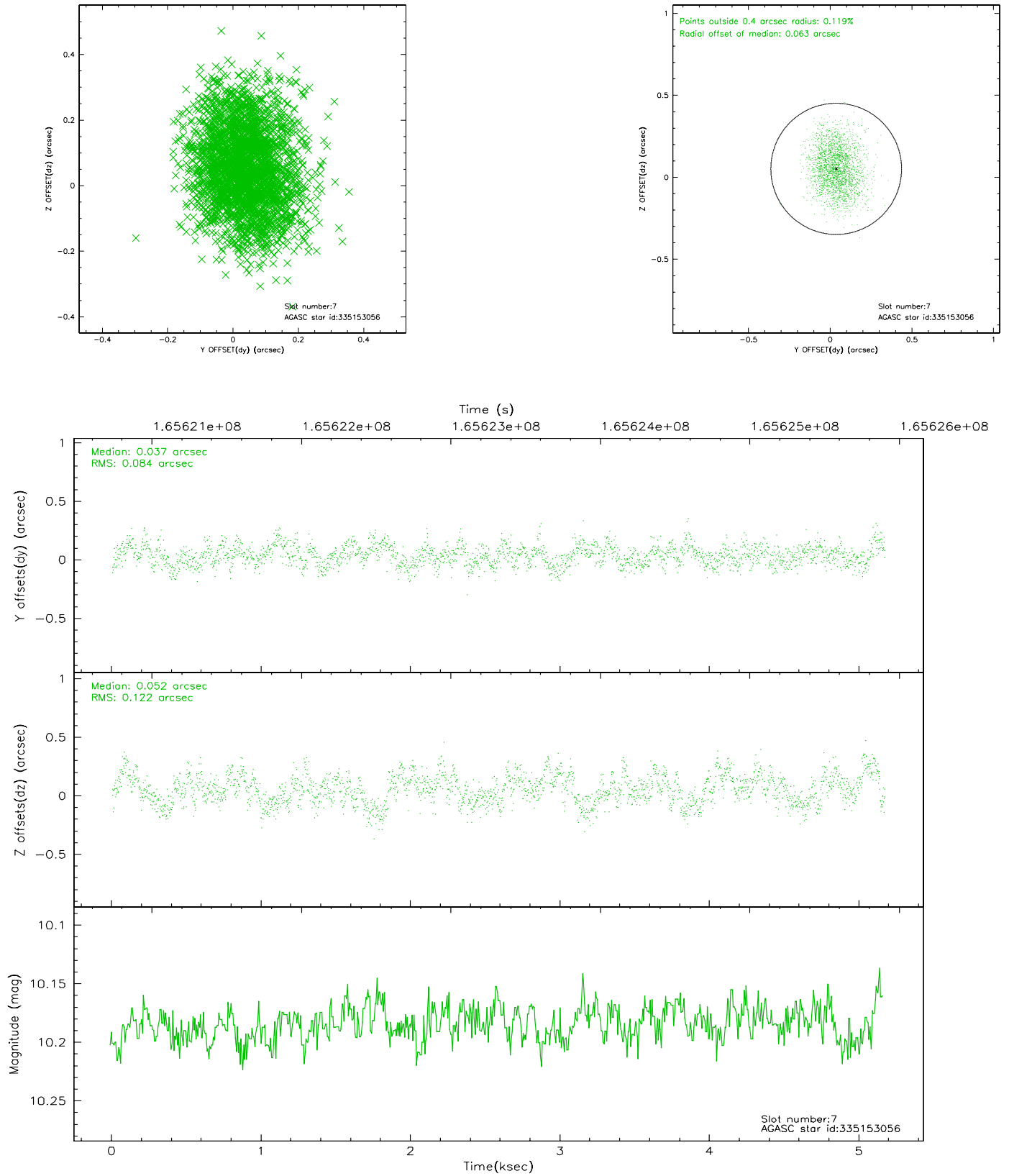
### 2.4.3 Slot 5



## 2.4.4 Slot 6

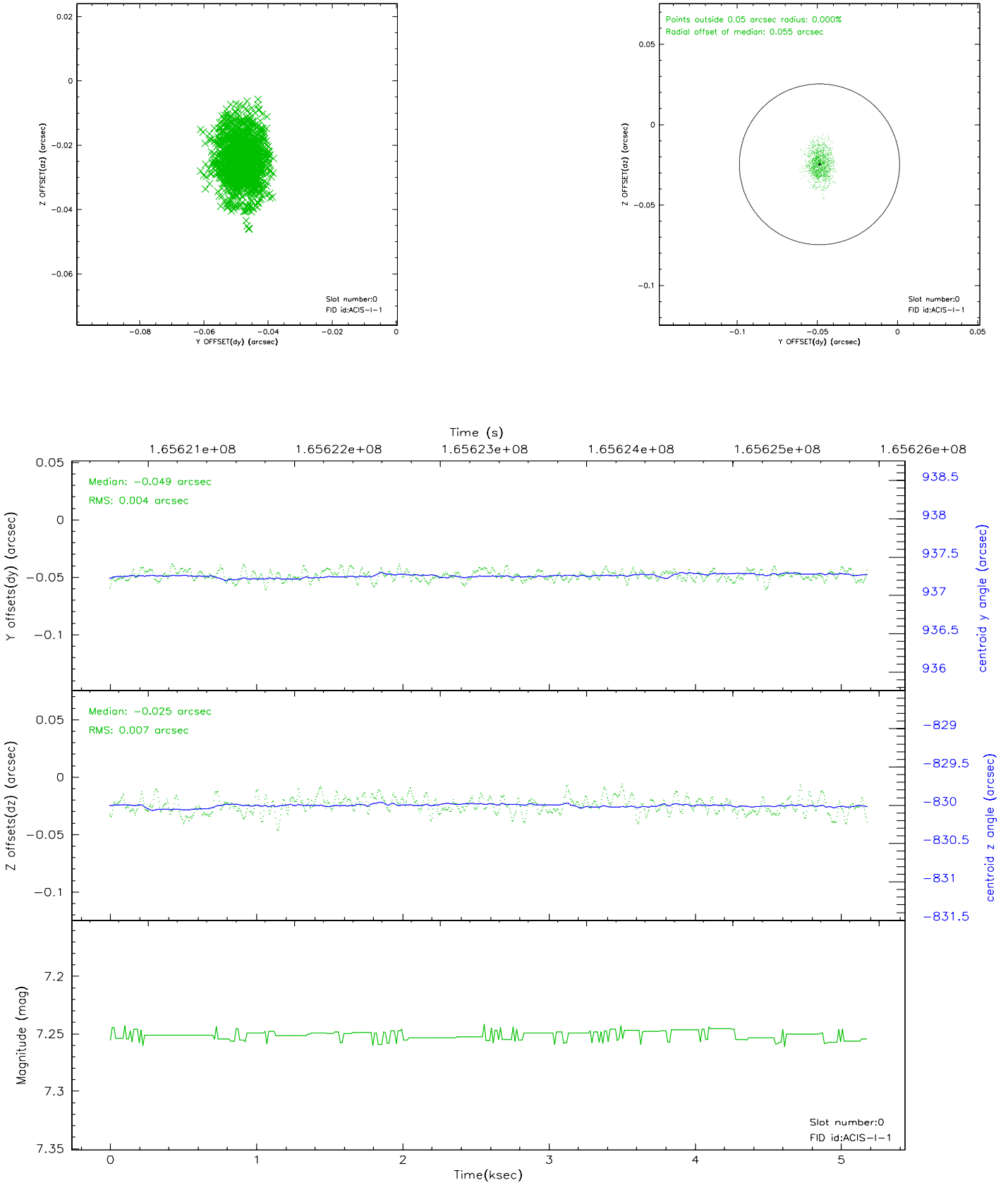


## 2.4.5 Slot 7

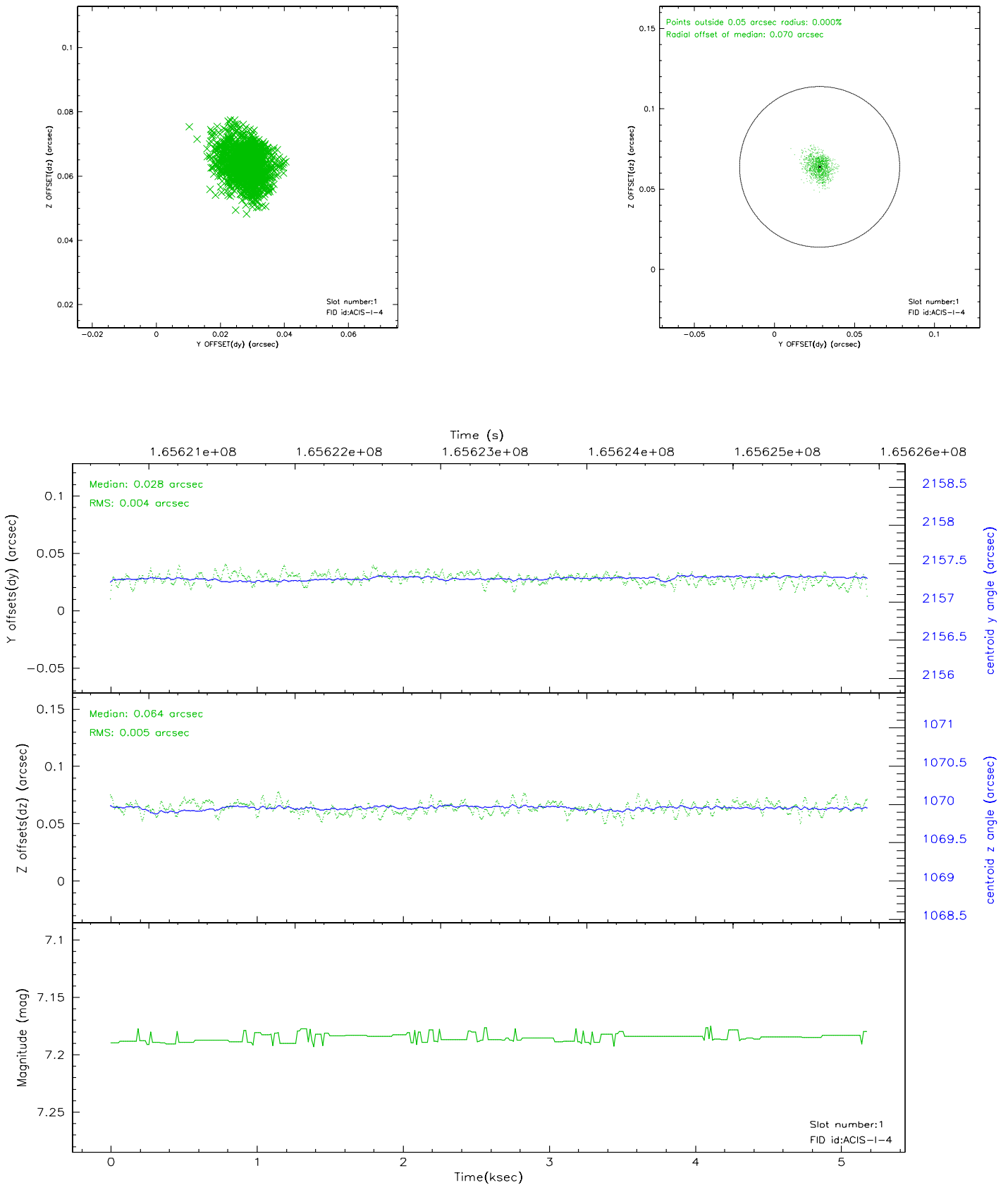


## 2.5 FID Slots

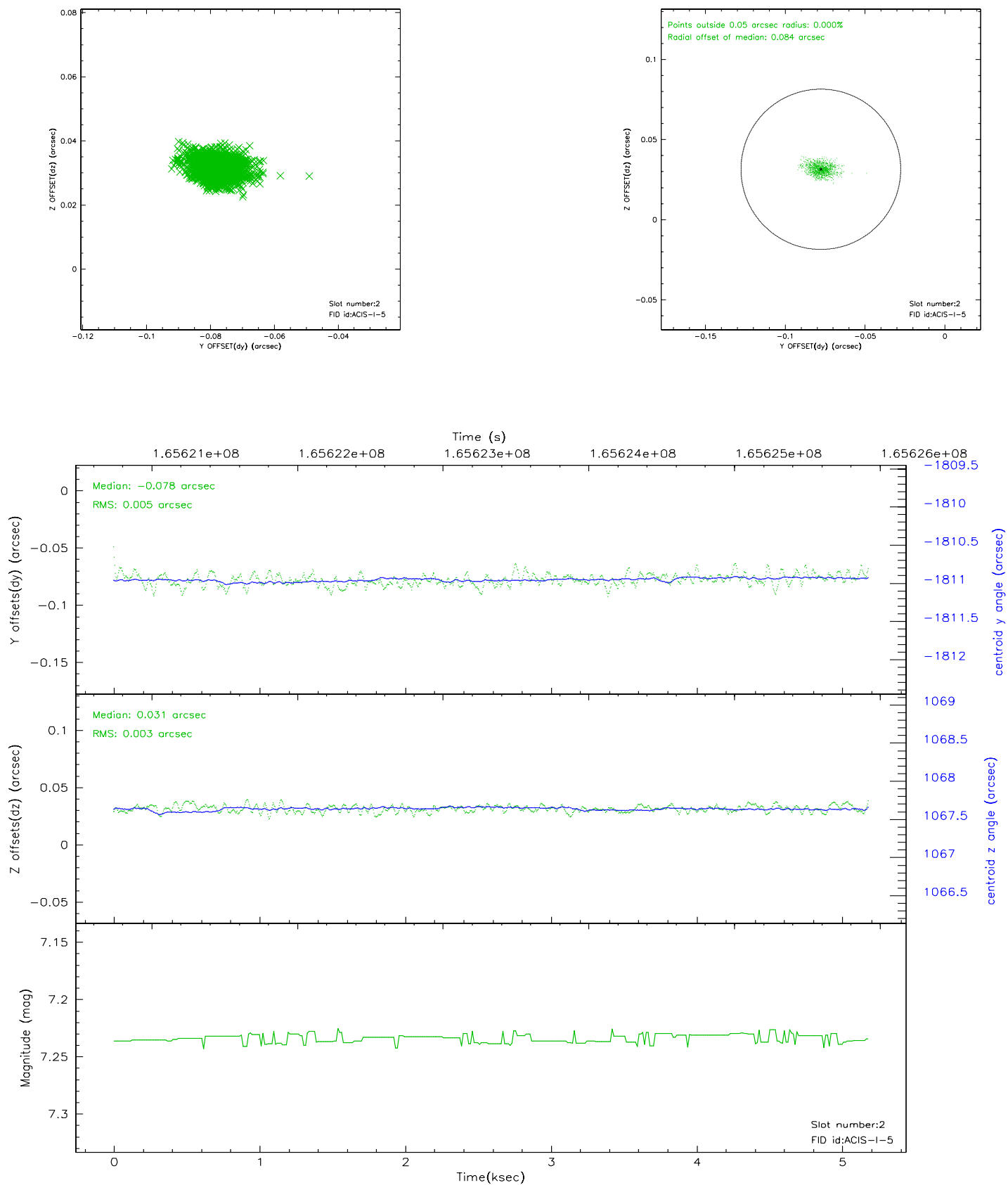
### 2.5.1 Slot 0



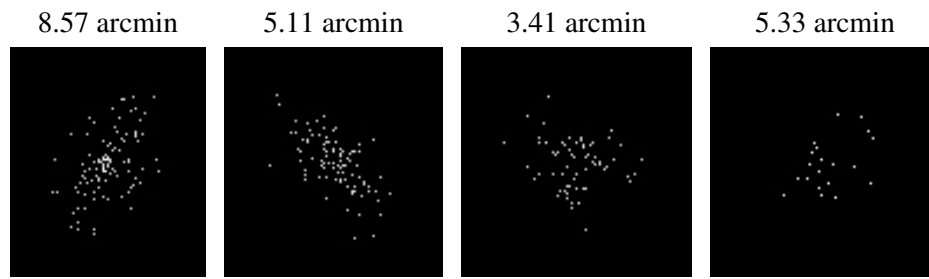
## 2.5.2 Slot 1



### 2.5.3 Slot 2



### 3 Point Sources



## A Summary

### A.1 Status

V&V Scientist	Jen Lauer
V&V Date (YYYY-MM-DD)	2006.07.30
V&V Edition	1
V&V Disposition and Status	OK
V&V Charge Time	4.773

### A.2 Comments