

V&V Reference Report

L2 ASCDS Version : 8.4.5

Observation 3639 - L2 Version 3
Chandra X-Ray Center

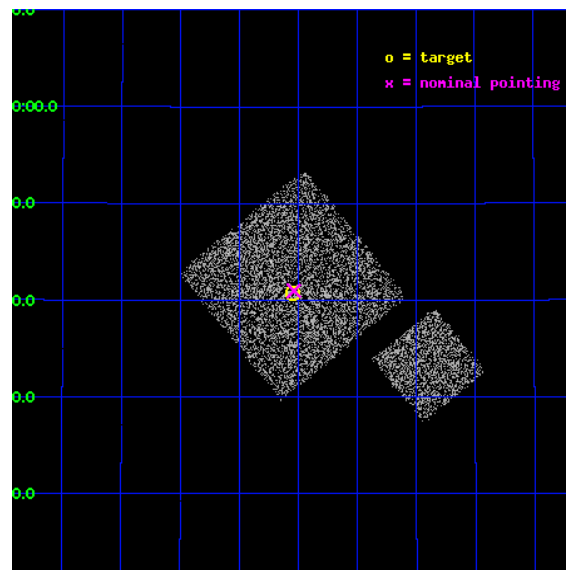
L2 Processing Date : Oct 26 2012

Contents

1	Front	2
2	OBI	3
2.1	OBI	3
2.1.1	Images	3
2.1.2	Bias	3
2.1.3	Parameters	4
2.1.4	Events	4
2.2	Compared Parameters	5
2.3	Aspect	6
2.4	Star Slots	9
2.4.1	Slot 3	9
2.4.2	Slot 4	10
2.4.3	Slot 5	11
2.4.4	Slot 6	12
2.4.5	Slot 7	13
2.5	FID Slots	14
2.5.1	Slot 0	14
2.5.2	Slot 1	15
2.5.3	Slot 2	16
A	Summary	17
A.1	Status	17
A.2	Comments	17

1 Front

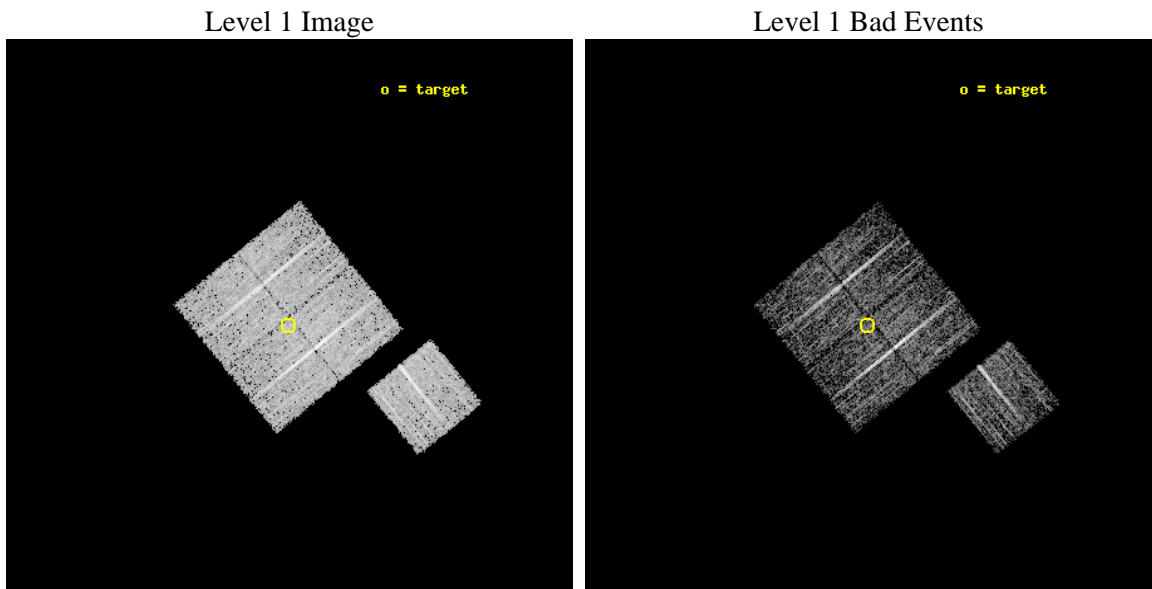
seq_num	900239	Sequence number
obs_id	3639	Observation id
title	CHANDRA LARGE SCALE SURVEY OF THE NOAO BOOTES DEEP FIELD	Proposal
observer	Dr. Stephen Murray	Principal investigator
object	NOAO FIELD F30	Source name
dtcycle	0	
cycle	P	events from which exps? Prim/Second/Both
ra_targ	217.38708	Observer's specified target RA [deg]
dec_targ	34.679082	Observer's specified target Dec [deg]
ra_nom	217.38440292351	Nominal RA [deg]
dec_nom	34.68313955274	Nominal Dec [deg]
roll_nom	141.01020421003	Nominal Roll [deg]
revision	3	Processing version of data
ontime	4578.6137349904	Sum of GTIs [s]
livetime	4518.7907758163	Livetime [s]
ontime0	4578.4906149805	Sum of GTIs [s]
ontime1	4578.5316549838	Sum of GTIs [s]
ontime2	4578.5726949871	Sum of GTIs [s]
ontime3	4578.6137349904	Sum of GTIs [s]
ontime6	4578.4495749772	Sum of GTIs [s]
l2events	11508	Number of level 2 events



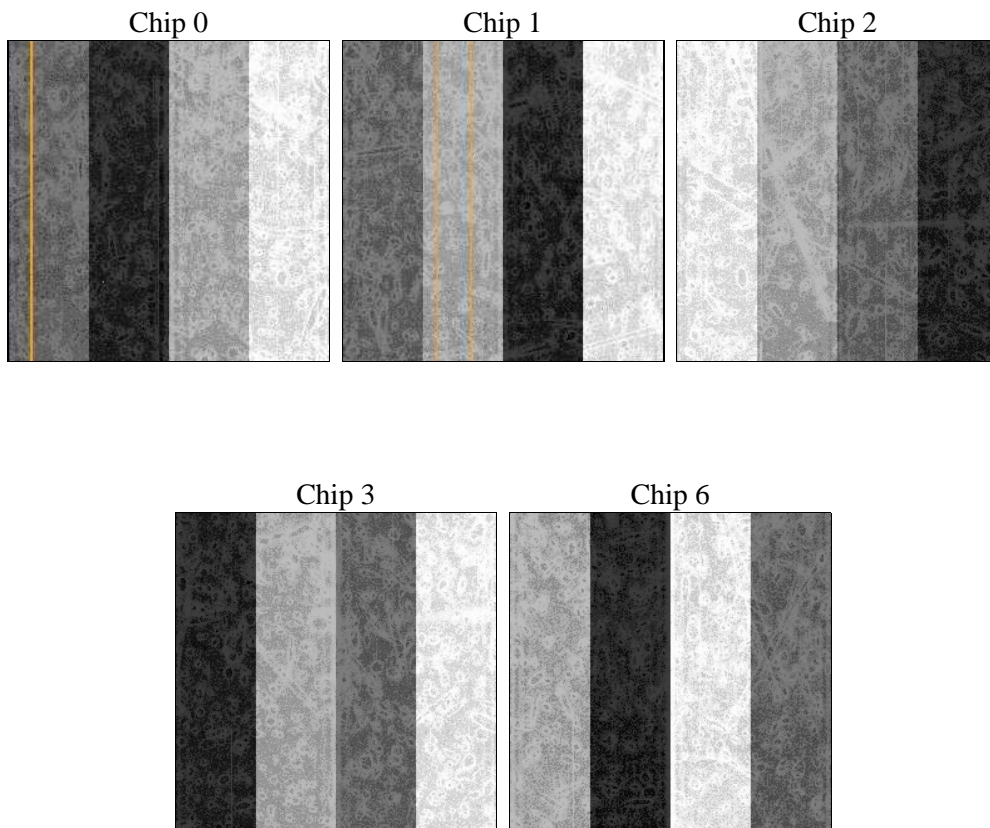
2 OBI

2.1 OBI

2.1.1 Images



2.1.2 Bias



2.1.3 Parameters

obi_num	1	Obi number	sched_exp_time	4800.000000	[s] Scheduled observation exposure time
ascdsver	8.4.5	Processing system revision	ontime	4578.6137349904	Sum of GTIs [s]
caldsver	4.5.2	 	ontime0	4578.4906149805	Sum of GTIs [s]
date	2012-10-26T01:21:35	Date and time of file creation	ontime1	4578.5316549838	Sum of GTIs [s]
revision	3	Processing version of data	ontime2	4578.5726949871	Sum of GTIs [s]
			ontime3	4578.6137349904	Sum of GTIs [s]
			ontime6	4578.4495749772	Sum of GTIs [s]
			l1events	116742	Number of level 1 events

2.1.4 Events

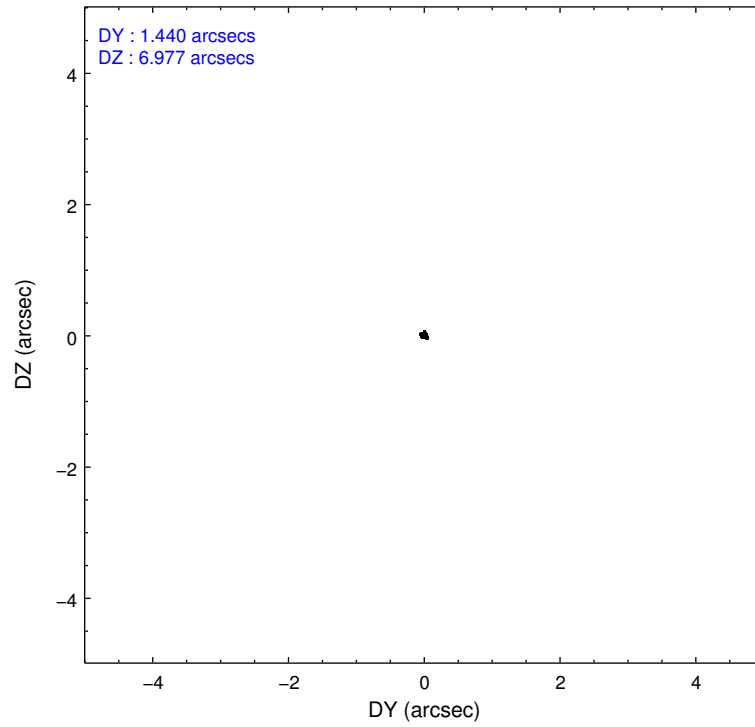
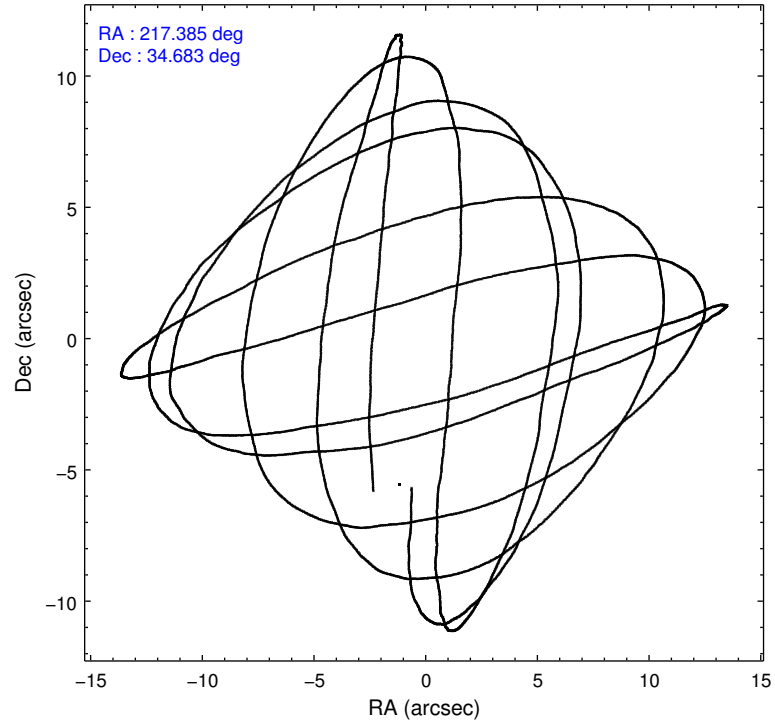
	ccd 0	ccd 1	ccd 2	ccd 3	ccd 6
level 1 events	21628	22764	25060	22818	24472
rejected events	18967	19805	22355	20260	21651
rejected %	87%	87%	89%	88%	88%

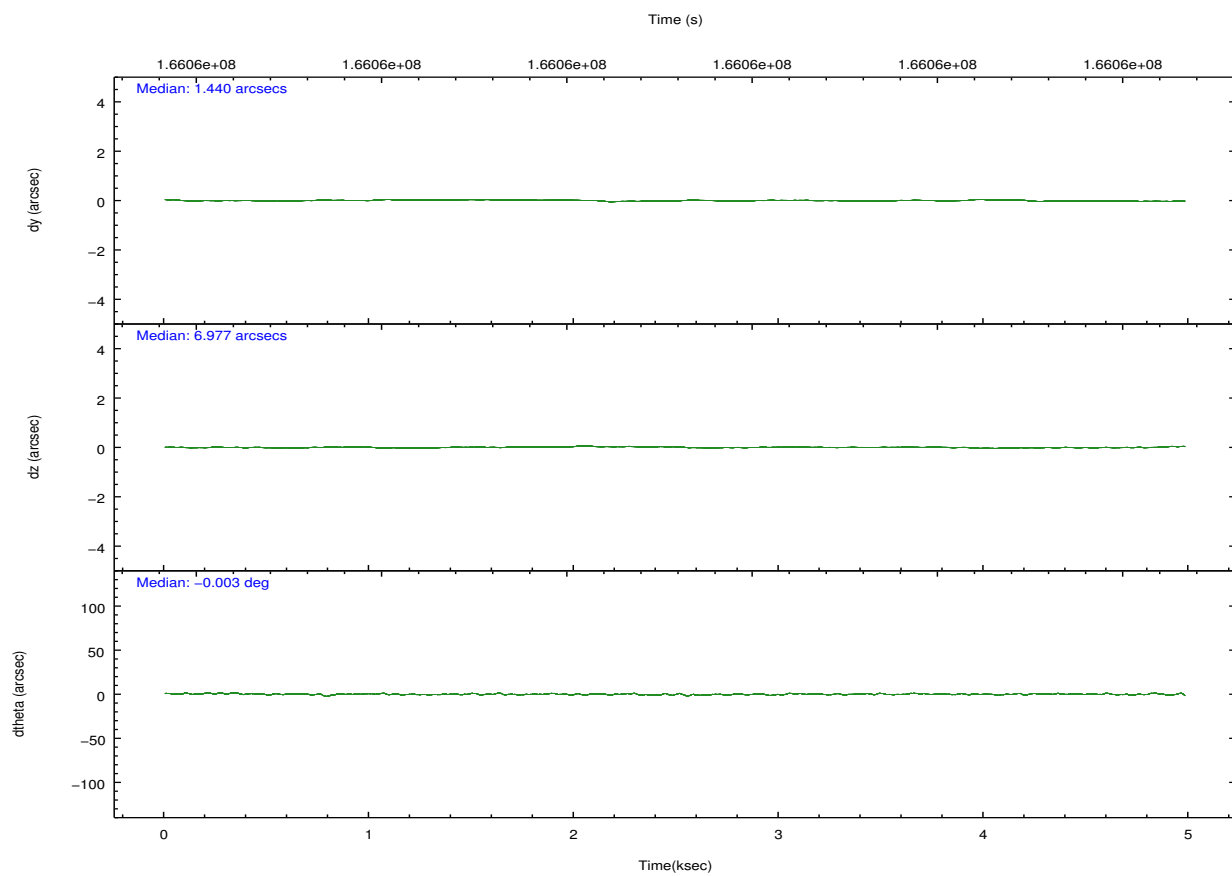
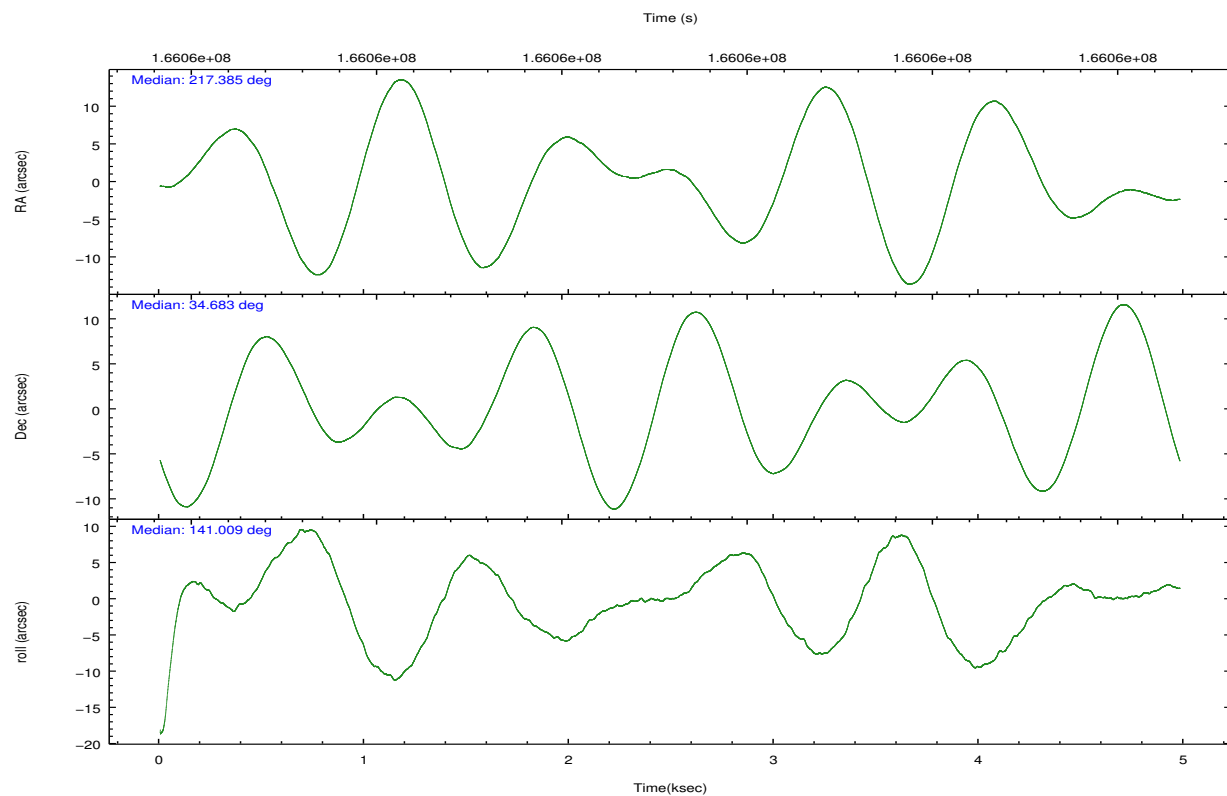
	ccd 0	ccd 1	ccd 2	ccd 3	ccd 6
grade 0 events	1159	1225	1229	1064	1170
	5%	5%	4%	4%	4%
grade 1 events	10	8	16	6	11
	0%	0%	0%	0%	0%
grade 2 events	559	612	547	466	519
	2%	2%	2%	2%	2%
grade 3 events	263	296	266	293	274
	1%	1%	1%	1%	1%
grade 4 events	240	295	219	256	290
	1%	1%	0%	1%	1%
grade 5 events	693	733	643	737	768
	3%	3%	2%	3%	3%
grade 6 events	441	532	444	480	569
	2%	2%	1%	2%	2%
grade 7 events	18263	19063	21696	19516	20871
	84%	83%	86%	85%	85%

2.2 Compared Parameters

Parameter	Planned	Actual	Parameter	Planned	Actual
Instrument	ACIS	ACIS	Obspar format version number	7	7
Detector	ACIS-01236	ACIS-01236	Obspar file type	PREDICTED	ACTUAL
Grating	NONE	NONE	Obspar update status	NONE	UPDATED
Data mode	VFAINT	VFAINT	Number of optional ACIS chips dropped	0	0
Observation mode	POINTING	POINTING	On-chip summing requested	N	N
[deg] Pointing RA	217.417338	217.3844029235057	Subarray requested	NONE	NONE
[deg] Pointing Dec	34.678999	34.68313955274046	Alternating exposures requested	N	N
[deg] Pointing Roll	140.782781	141.0102042100285	[s] Primary exposure time	0.000000	3.1
[mm] SIM focus pos	-0.782348	-0.7809083437167272			
[mm] SIM defocus	0	0.001439871863259334			
[mm] SIM translation stage pos	-233.592463	-233.5874344608287			
[mm] SIM translation stage offset	0	-0.005018542100998502			
[s] Observation start time (MET)	166055275.184000	166054899.50297			
Observation start date	2003-04-06T22:26:51	2003-04-06T22:21:39			
[s] Observation end time (MET)	166060075.184000	166060209.51569			
Observation end date	2003-04-06T23:46:51	2003-04-06T23:50:09			
Read mode	TIMED	TIMED			

2.3 Aspect



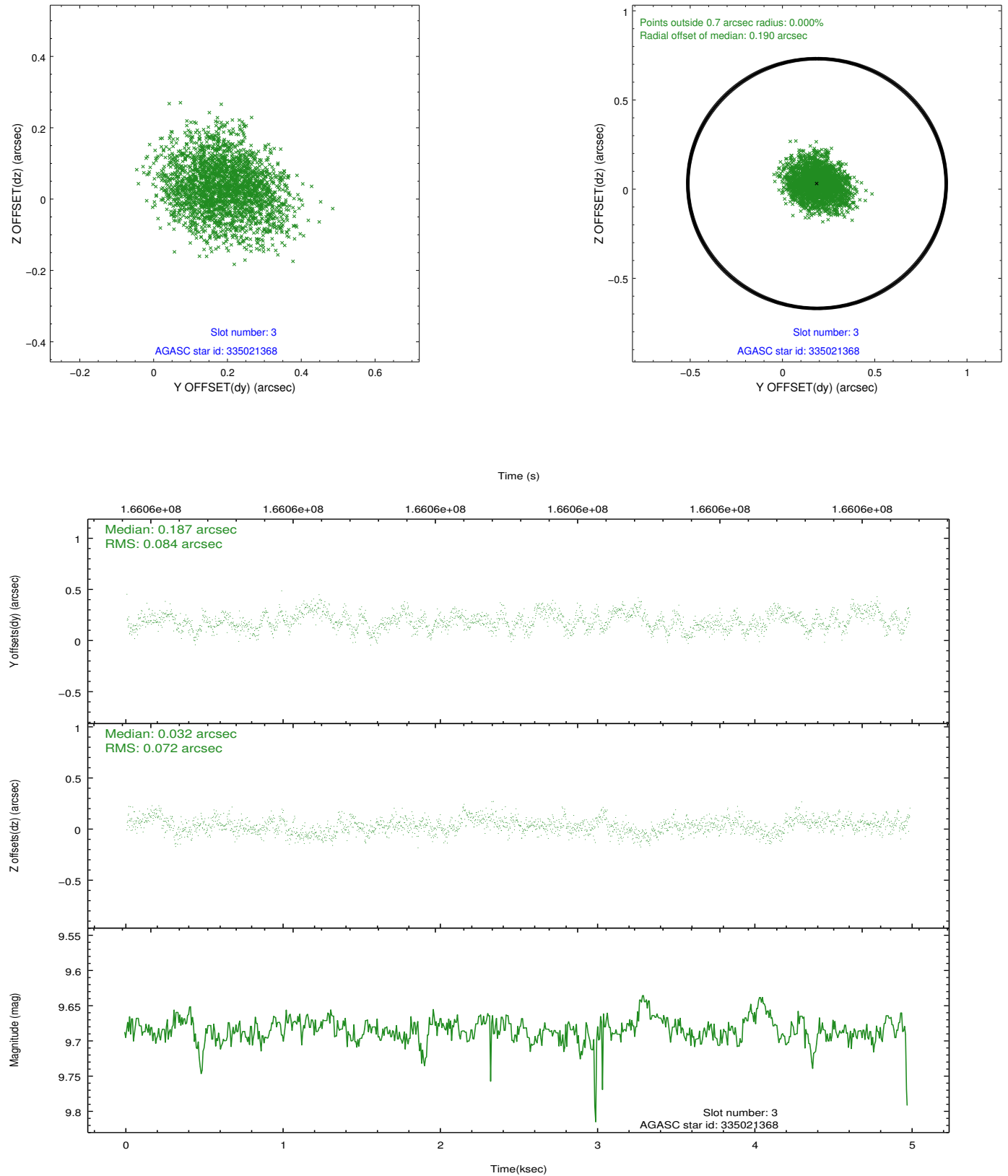


Slot Statistics

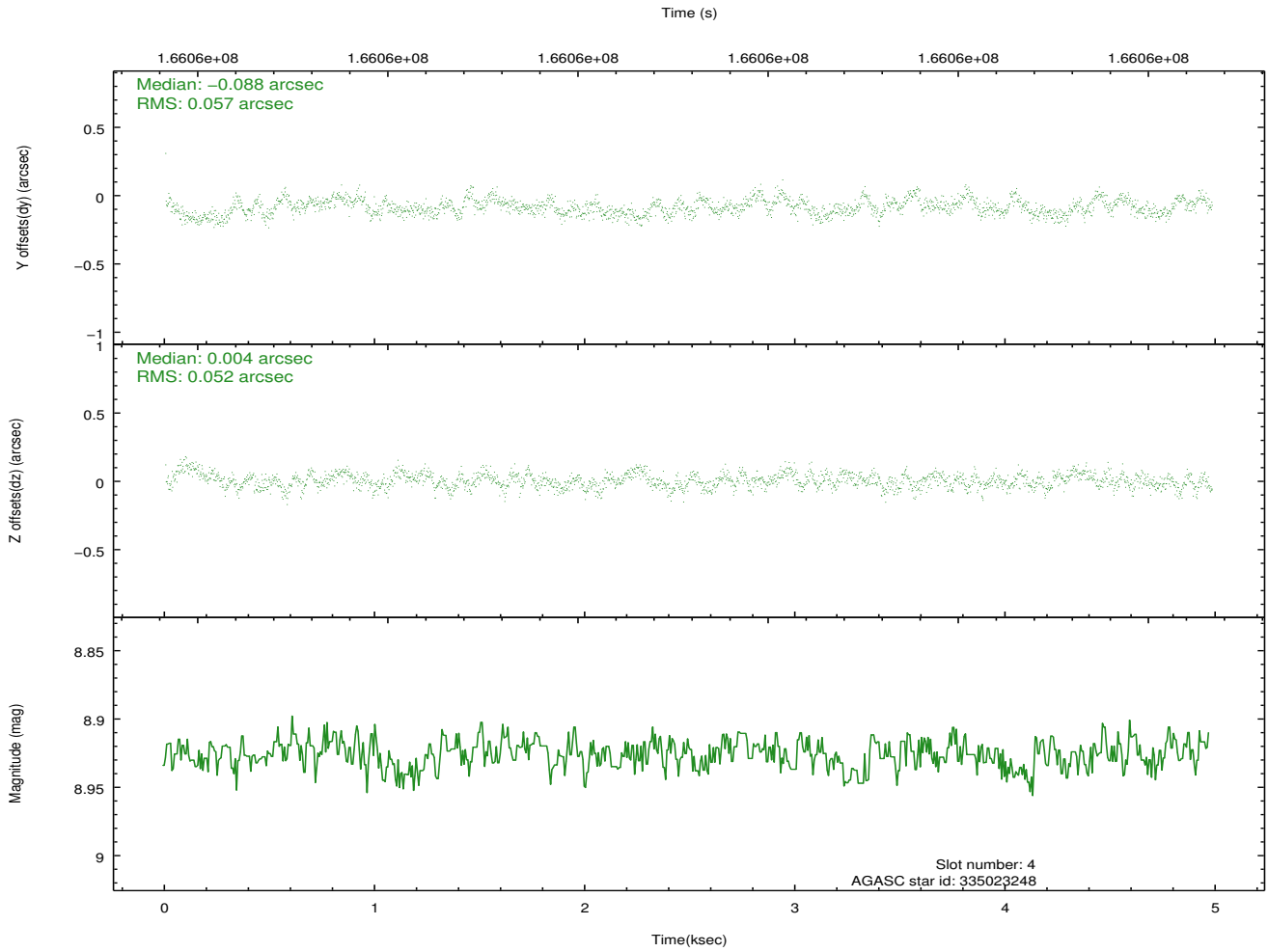
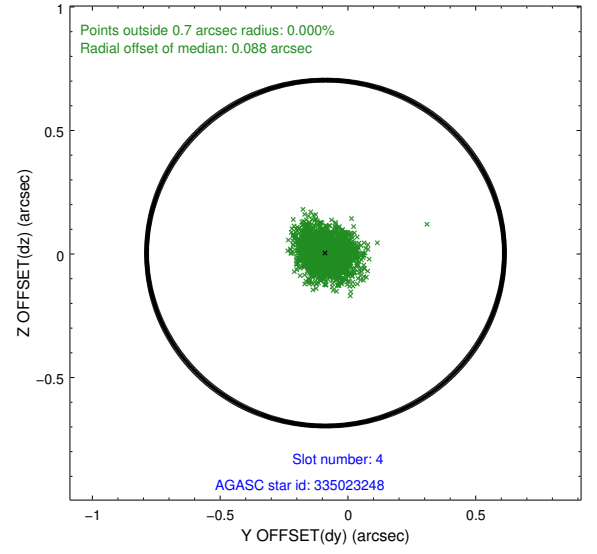
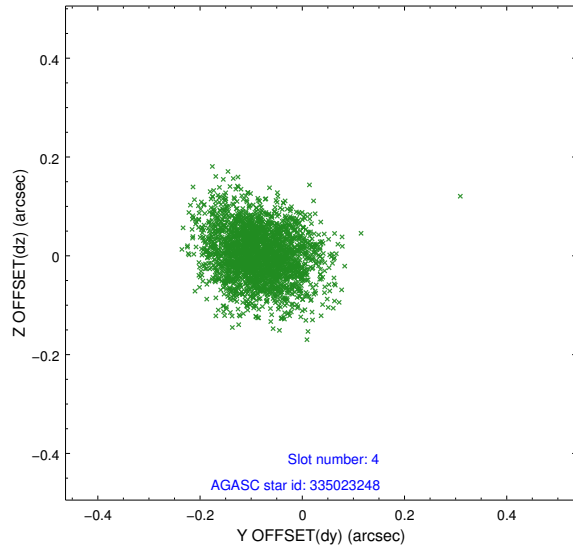
slot	status	id	mag	n_pts	med_dy	med_dz	dr1	dr2	ra	dec	mean_y	mean_z
0	FID	ACIS-I-2	7.16	1215	-0.045	-0.093	0.009	0.015	0.000000	0.000000	-755.81	-836.84
1	FID	ACIS-I-4	7.18	1215	0.020	0.058	0.005	0.010	0.000000	0.000000	2157.74	1068.91
2	FID	ACIS-I-5	7.23	1215	-0.076	0.104	0.009	0.015	0.000000	0.000000	-1808.12	1068.15
3	GUIDE	335021368	9.68	2420	0.187	0.032	0.120	0.186	217.529643	33.934817	-1953.38	1863.62
4	GUIDE	335023248	8.93	2430	-0.088	0.004	0.082	0.134	217.634832	34.944512	106.84	-1145.89
5	GUIDE	335025848	9.75	2428	0.016	-0.149	0.126	0.204	217.530531	33.778292	-2312.39	2297.50
6	GUIDE	335030384	8.83	2429	-0.105	-0.019	0.074	0.118	216.806407	34.722197	1501.40	1019.40
7	GUIDE	335417968	9.37	2427	-0.008	0.130	0.093	0.157	217.358149	35.055285	992.44	-938.47

2.4 Star Slots

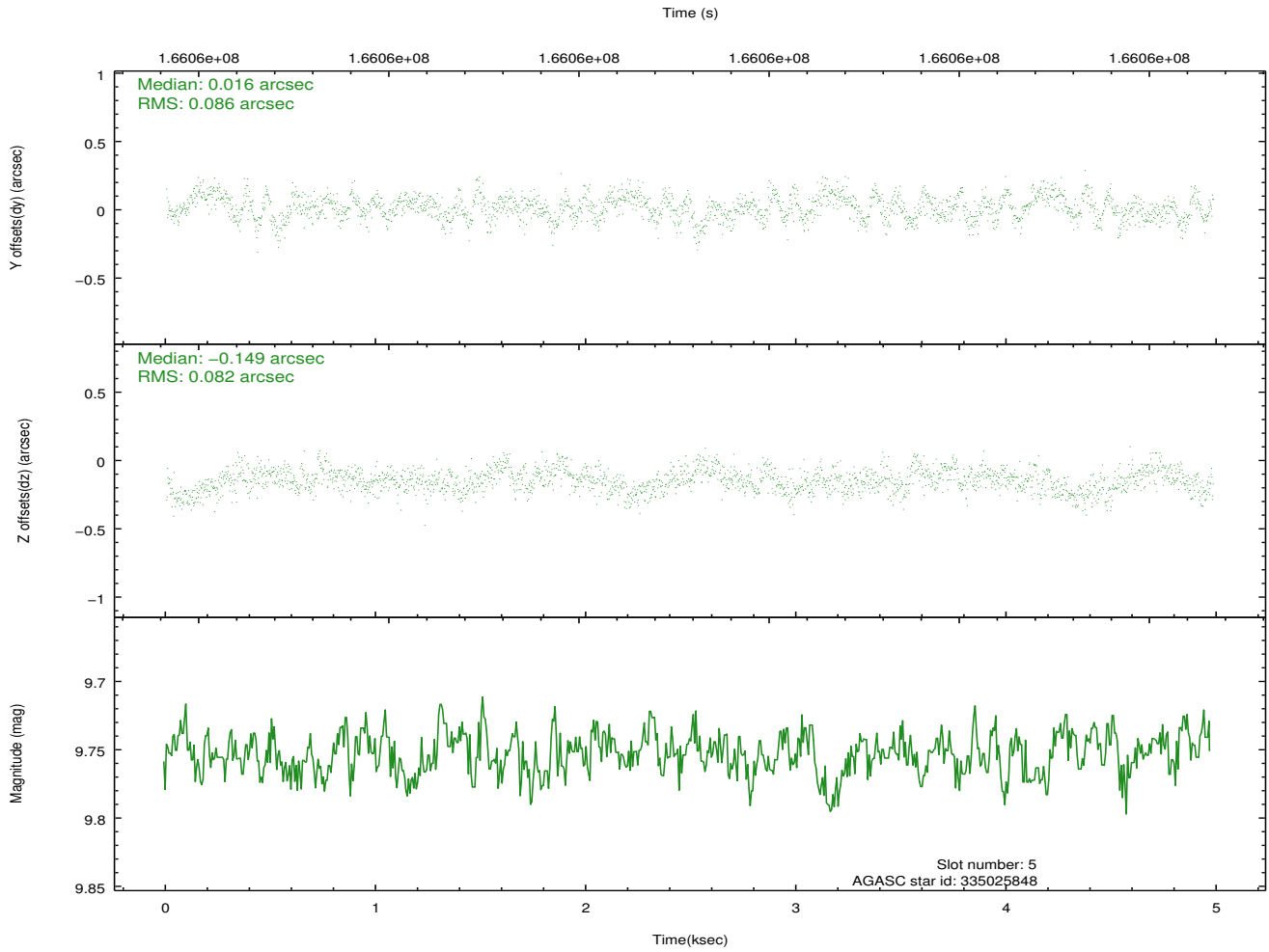
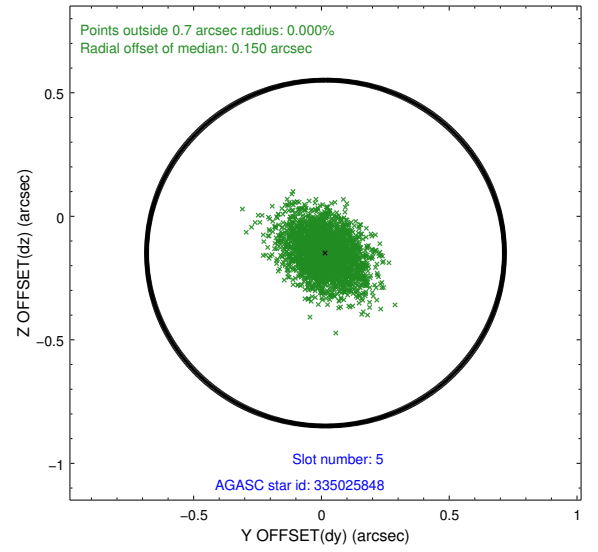
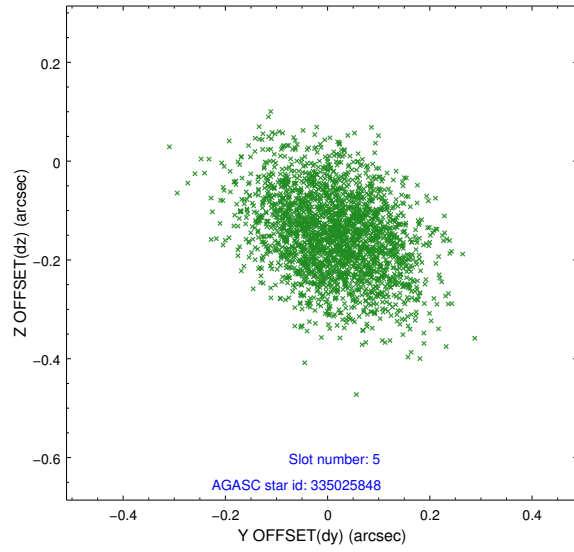
2.4.1 Slot 3



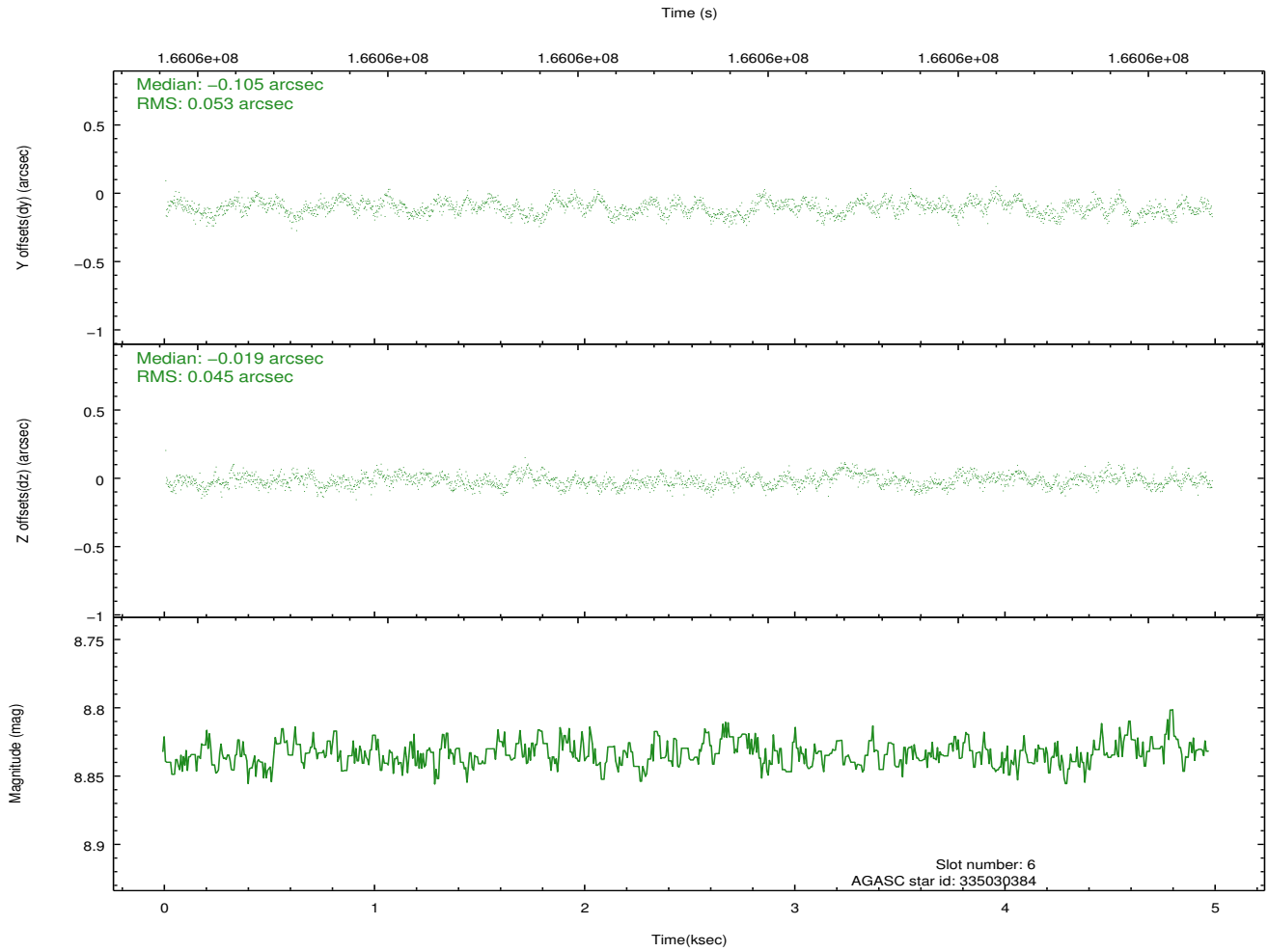
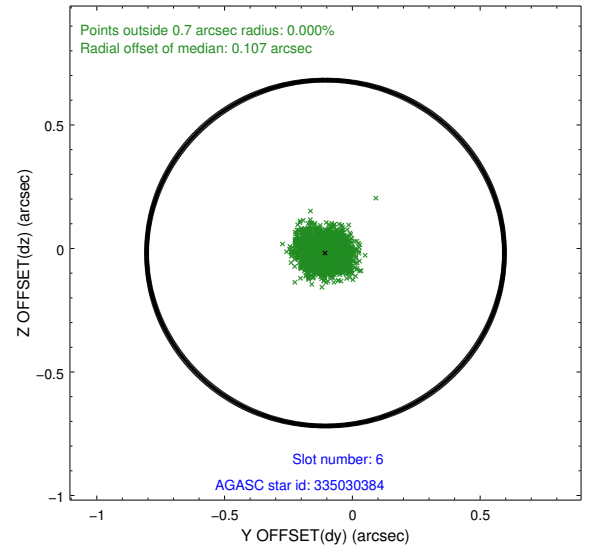
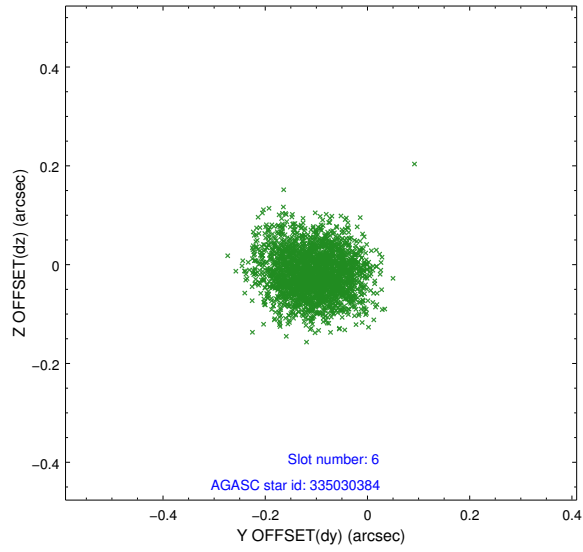
2.4.2 Slot 4



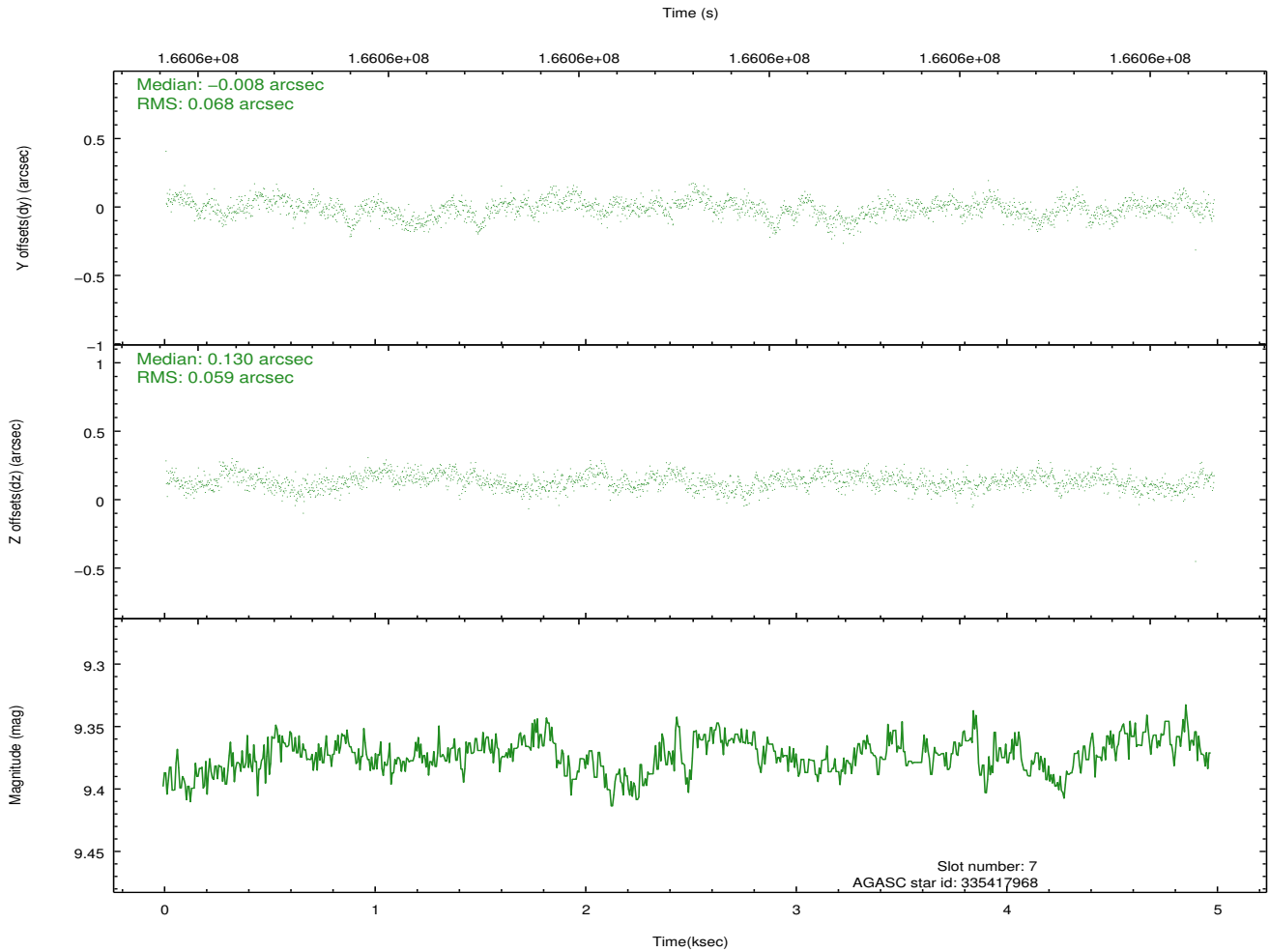
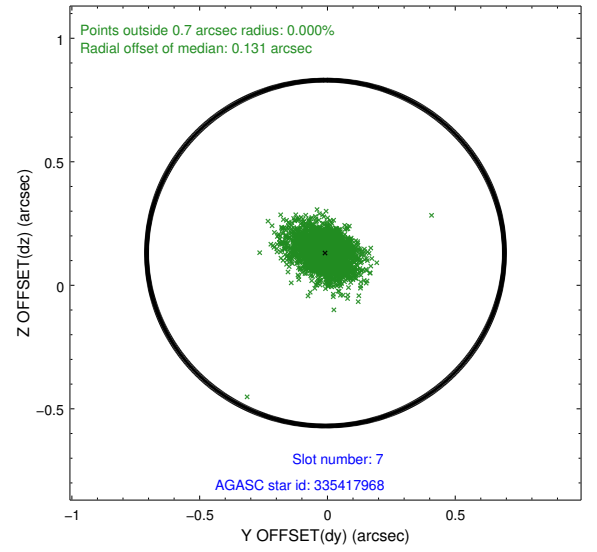
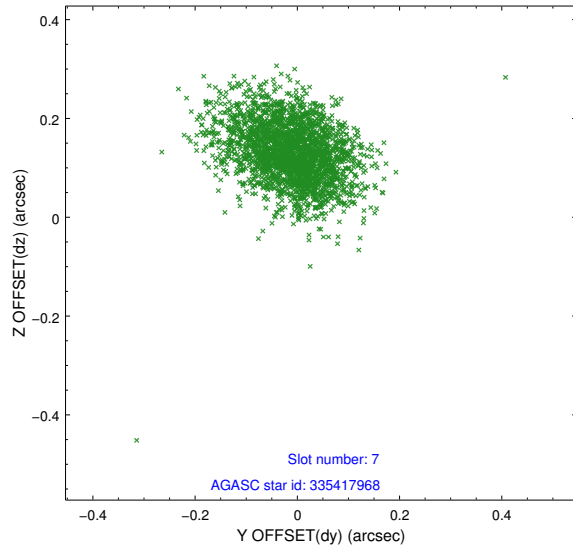
2.4.3 Slot 5



2.4.4 Slot 6

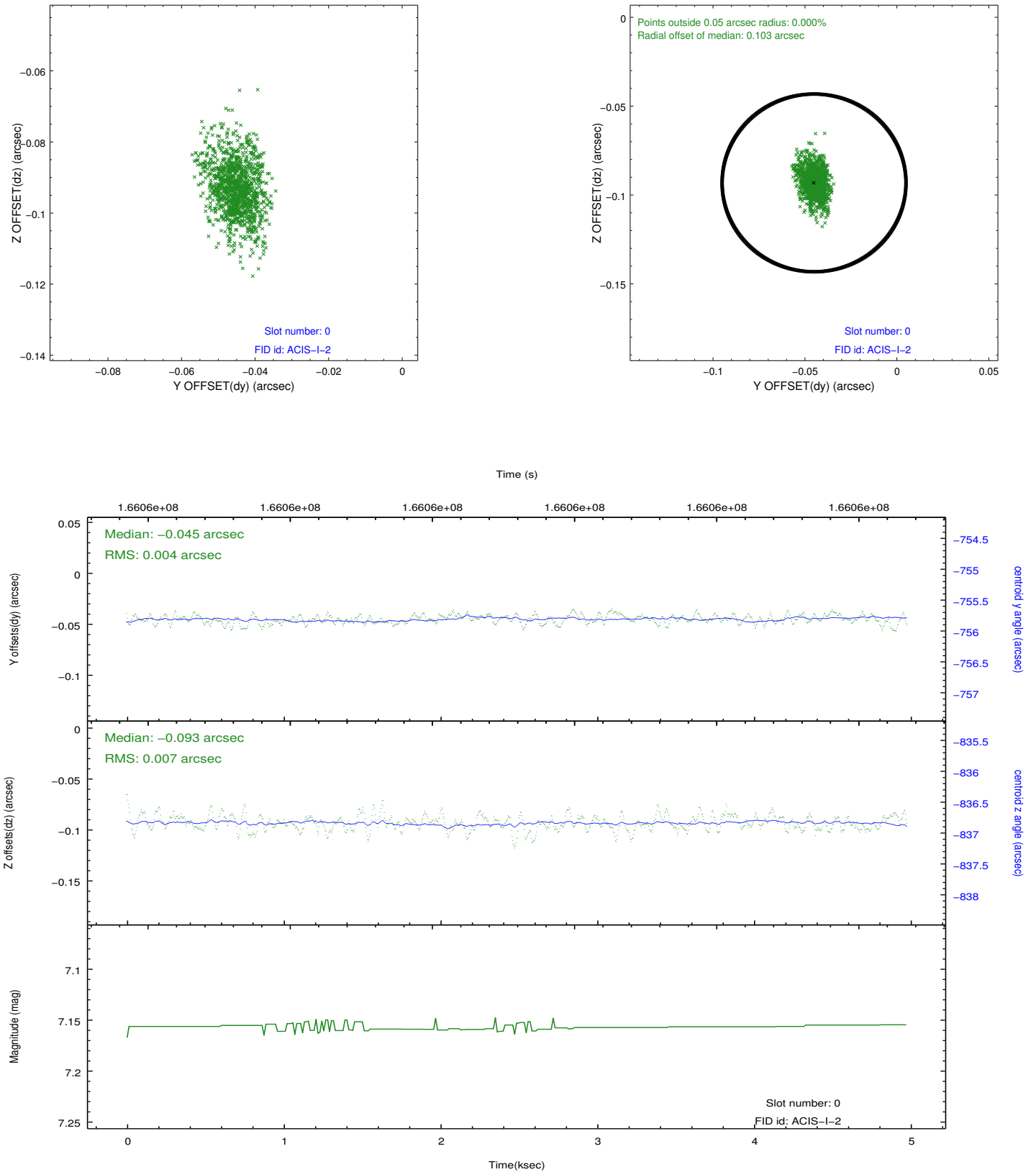


2.4.5 Slot 7

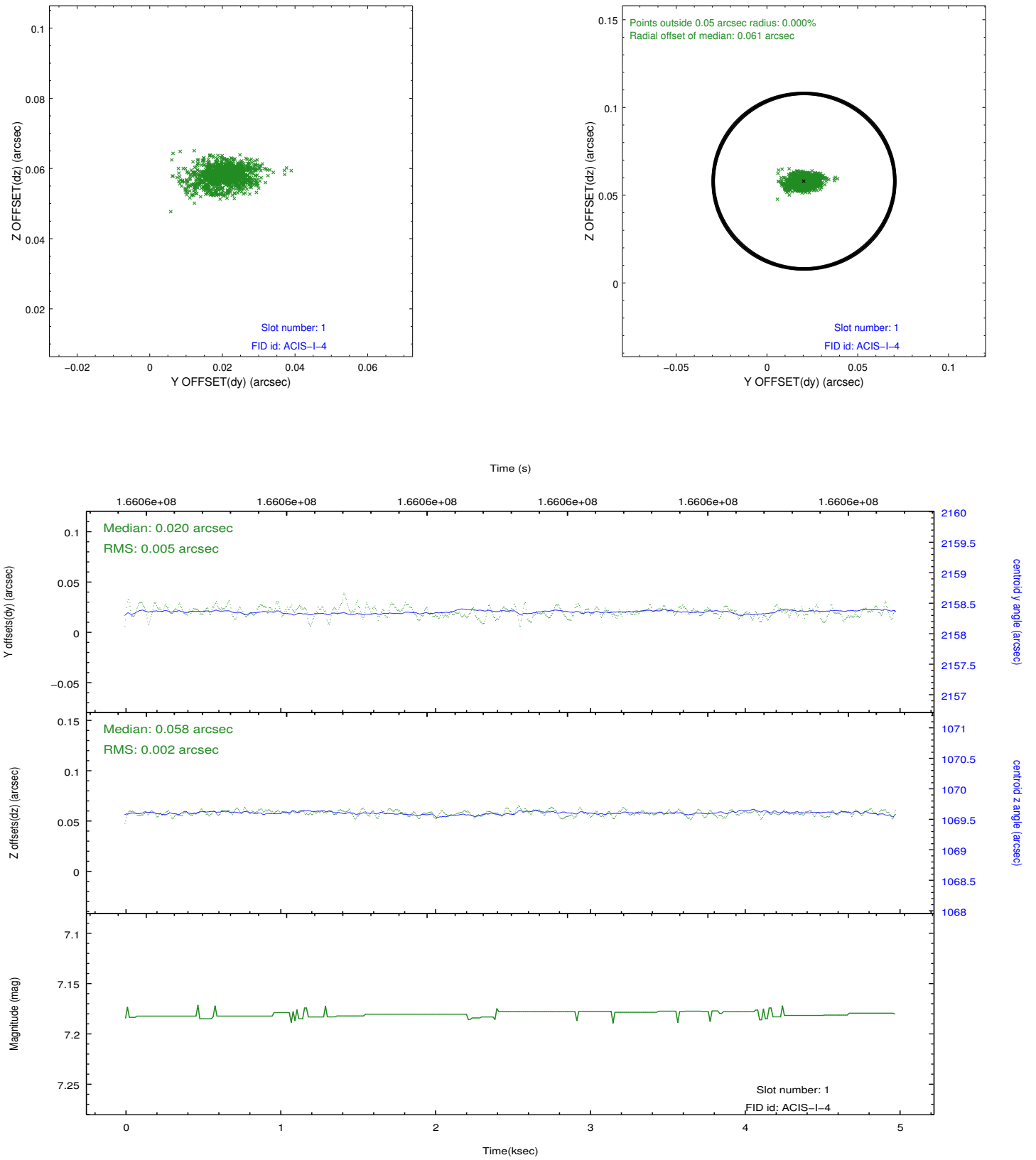


2.5 FID Slots

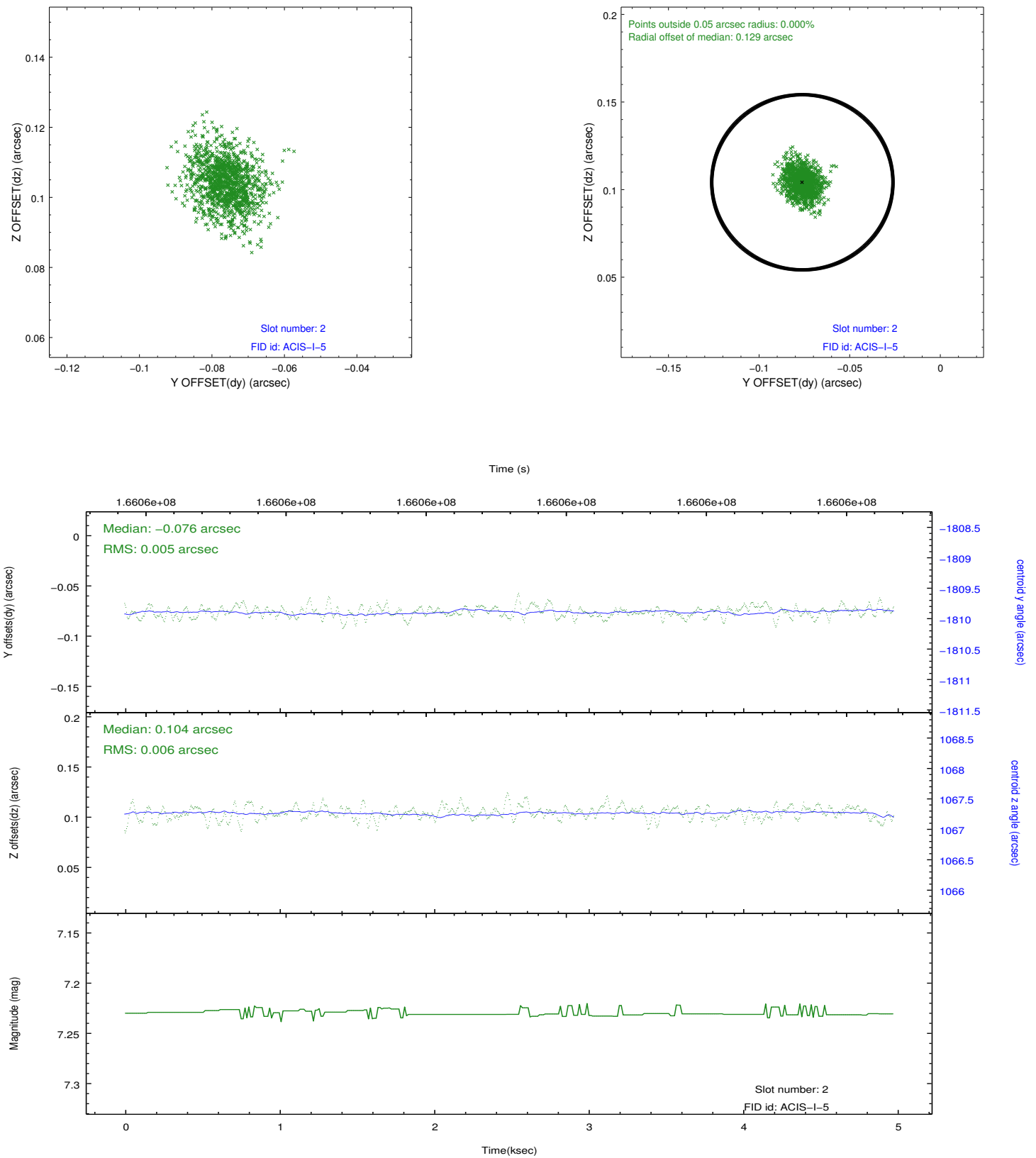
2.5.1 Slot 0



2.5.2 Slot 1



2.5.3 Slot 2



A Summary

A.1 Status

V&V Scientist	Jen Lauer
V&V Date (YYYY-MM-DD)	2012.11.14
V&V Edition	1
V&V Disposition and Status	OK
V&V Charge Time	4.578

A.2 Comments