

V&V Reference Report

L2 ASCDS Version : 8.4.5

Observation 3635 - L2 Version 3
Chandra X-Ray Center

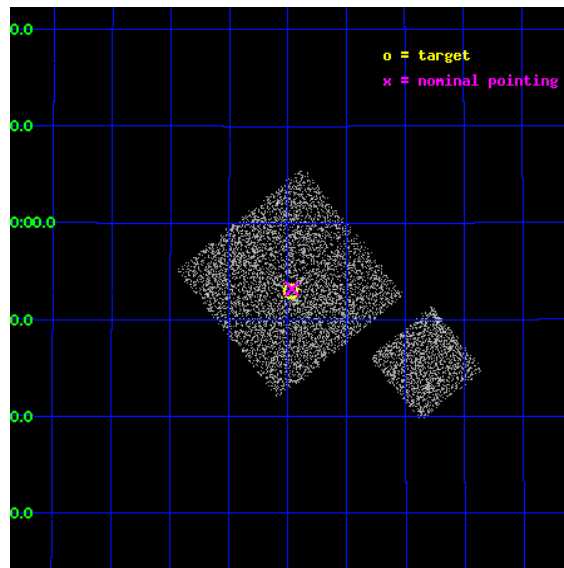
L2 Processing Date : Oct 24 2012

Contents

1	Front	2
2	OBI	3
2.1	OBI	3
2.1.1	Images	3
2.1.2	Bias	3
2.1.3	Parameters	4
2.1.4	Events	4
2.2	Compared Parameters	5
2.3	Aspect	6
2.4	Star Slots	9
2.4.1	Slot 3	9
2.4.2	Slot 4	10
2.4.3	Slot 5	11
2.4.4	Slot 6	12
2.4.5	Slot 7	13
2.5	FID Slots	14
2.5.1	Slot 0	14
2.5.2	Slot 1	15
2.5.3	Slot 2	16
A	Summary	17
A.1	Status	17
A.2	Comments	17

1 Front

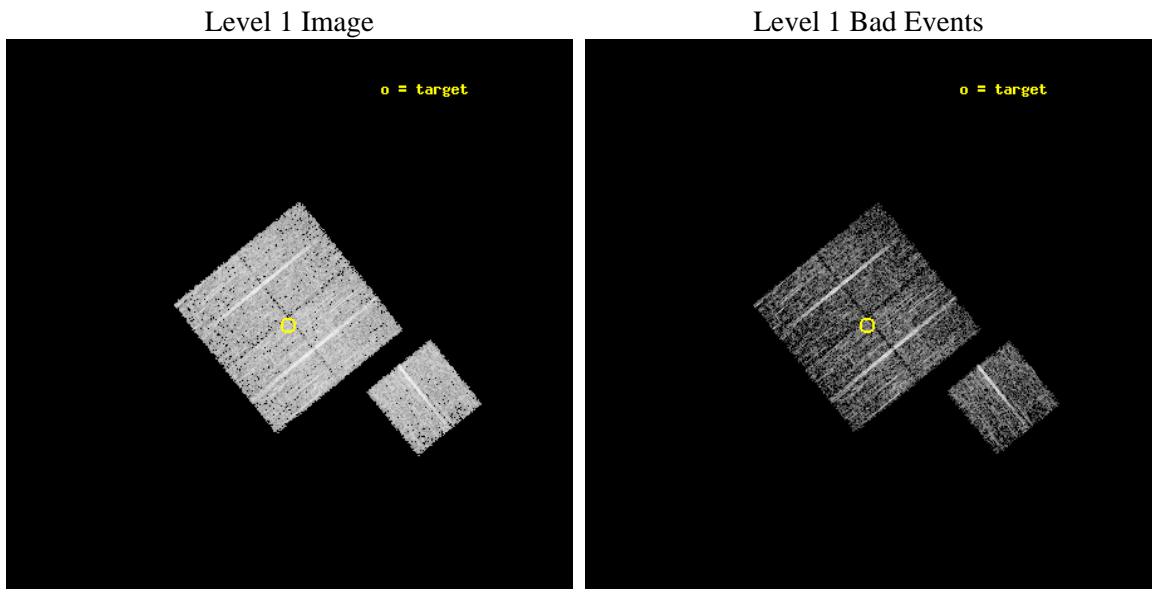
seq_num	900235	Sequence number
obs_id	3635	Observation id
title	CHANDRA LARGE SCALE SURVEY OF THE NOAO BOOTES DEEP FIELD	Proposal
observer	Dr. Stephen Murray	Principal investigator
object	NOAO FIELD F51	Source name
dtcycle	0	
cycle	P	events from which exps? Prim/Second/Both
ra_targ	216.744263	Observer's specified target RA [deg]
dec_targ	34.882776	Observer's specified target Dec [deg]
ra_nom	216.74150661522	Nominal RA [deg]
dec_nom	34.88678972655	Nominal Dec [deg]
roll_nom	141.0102655243	Nominal Roll [deg]
revision	3	Processing version of data
ontime	4777.029761672	Sum of GTIs [s]
livetime	4714.6143510376	Livetime [s]
ontime0	4776.9066615403	Sum of GTIs [s]
ontime1	4776.9477015436	Sum of GTIs [s]
ontime2	4776.9887216687	Sum of GTIs [s]
ontime3	4777.029761672	Sum of GTIs [s]
ontime6	4776.8656016588	Sum of GTIs [s]
l2events	9432	Number of level 2 events



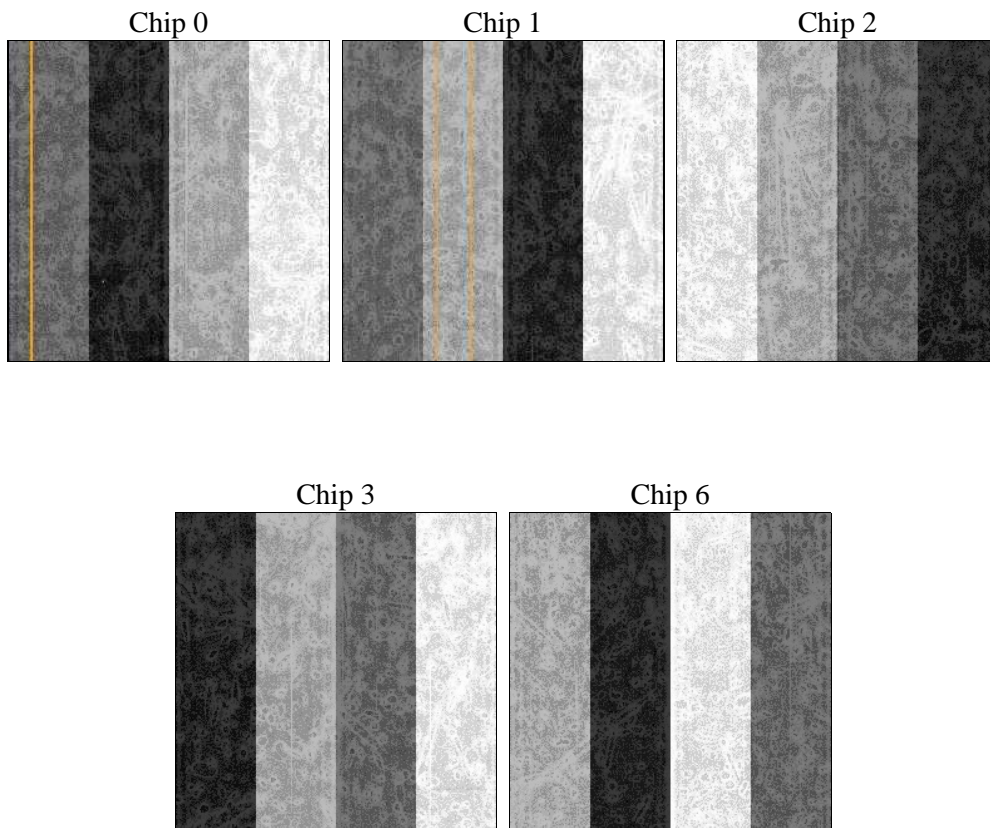
2 OBI

2.1 OBI

2.1.1 Images



2.1.2 Bias



2.1.3 Parameters

obi_num	0	Obi number	sched_exp_time	5000.000000	[s] Scheduled observation exposure time
ascdsver	8.4.5	Processing system revision	ontime	4777.029761672	Sum of GTIs [s]
caldsver	4.5.2	 	ontime0	4776.9066615403	Sum of GTIs [s]
date	2012-10-24T20:55:35	Date and time of file creation	ontime1	4776.9477015436	Sum of GTIs [s]
revision	3	Processing version of data	ontime2	4776.9887216687	Sum of GTIs [s]
			ontime3	4777.029761672	Sum of GTIs [s]
			ontime6	4776.8656016588	Sum of GTIs [s]
			l1events	120549	Number of level 1 events

2.1.4 Events

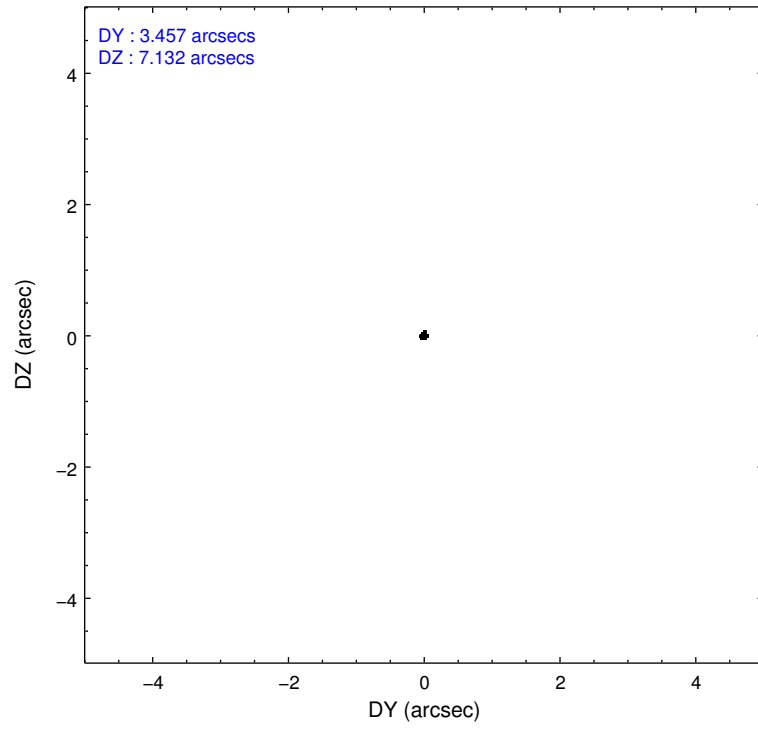
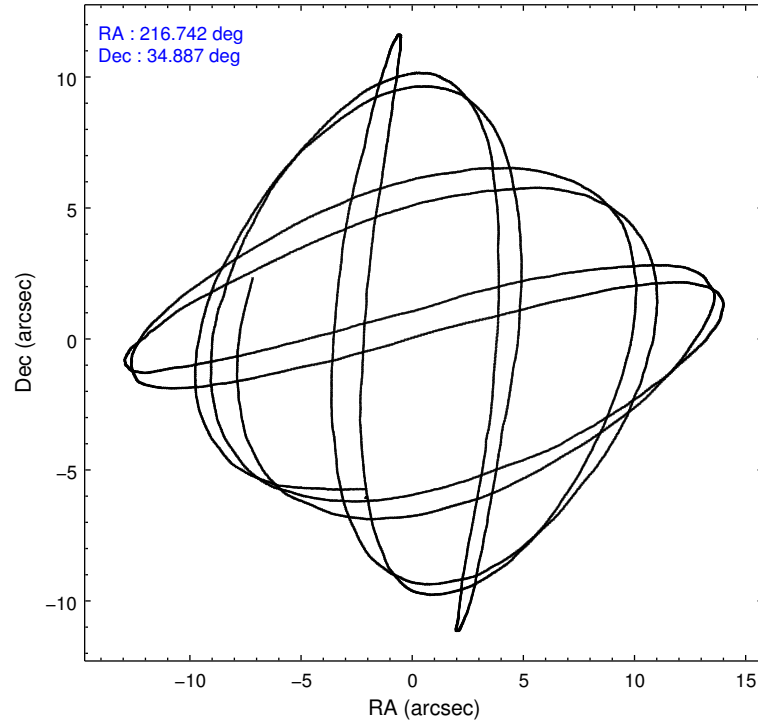
	ccd 0	ccd 1	ccd 2	ccd 3	ccd 6
level 1 events	21319	22765	26150	26219	24096
rejected events	19078	20382	23792	24061	21673
rejected %	89%	89%	90%	91%	89%

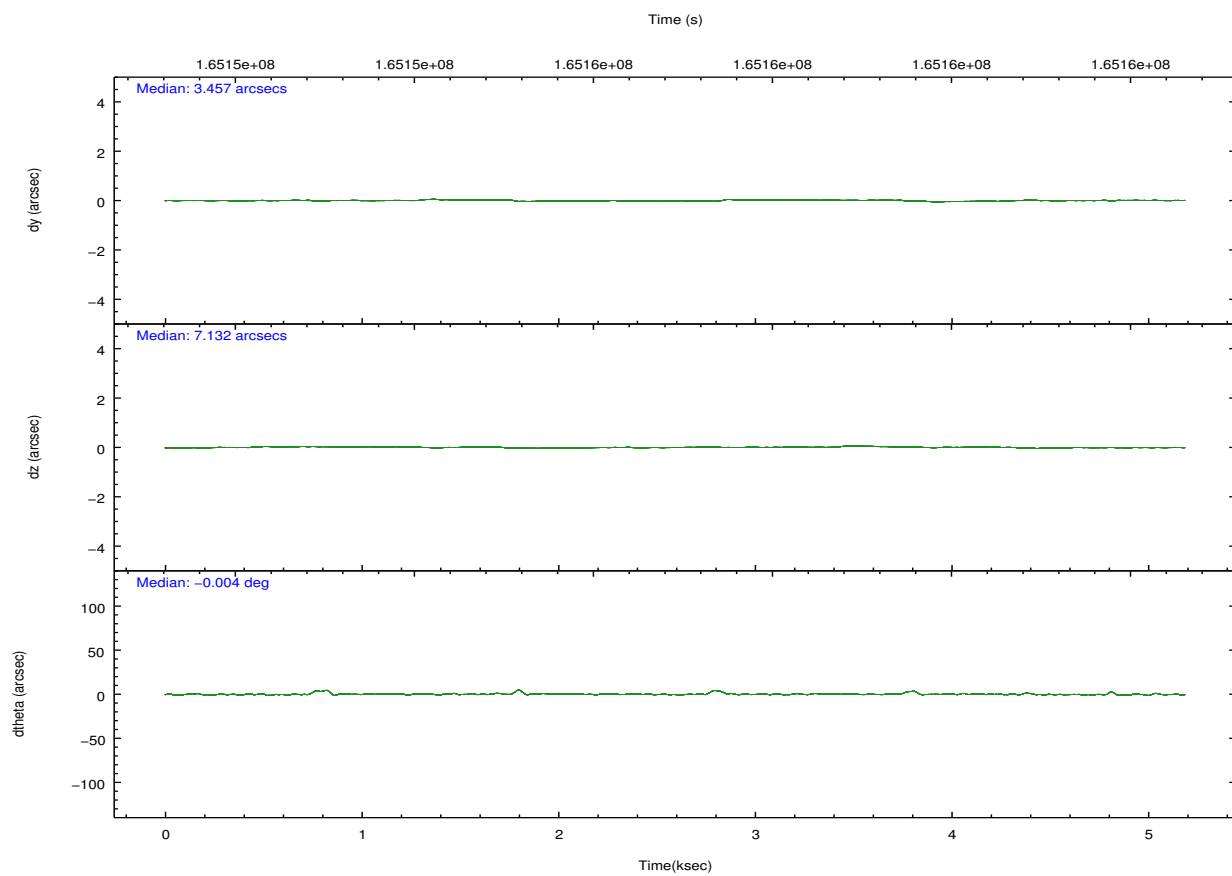
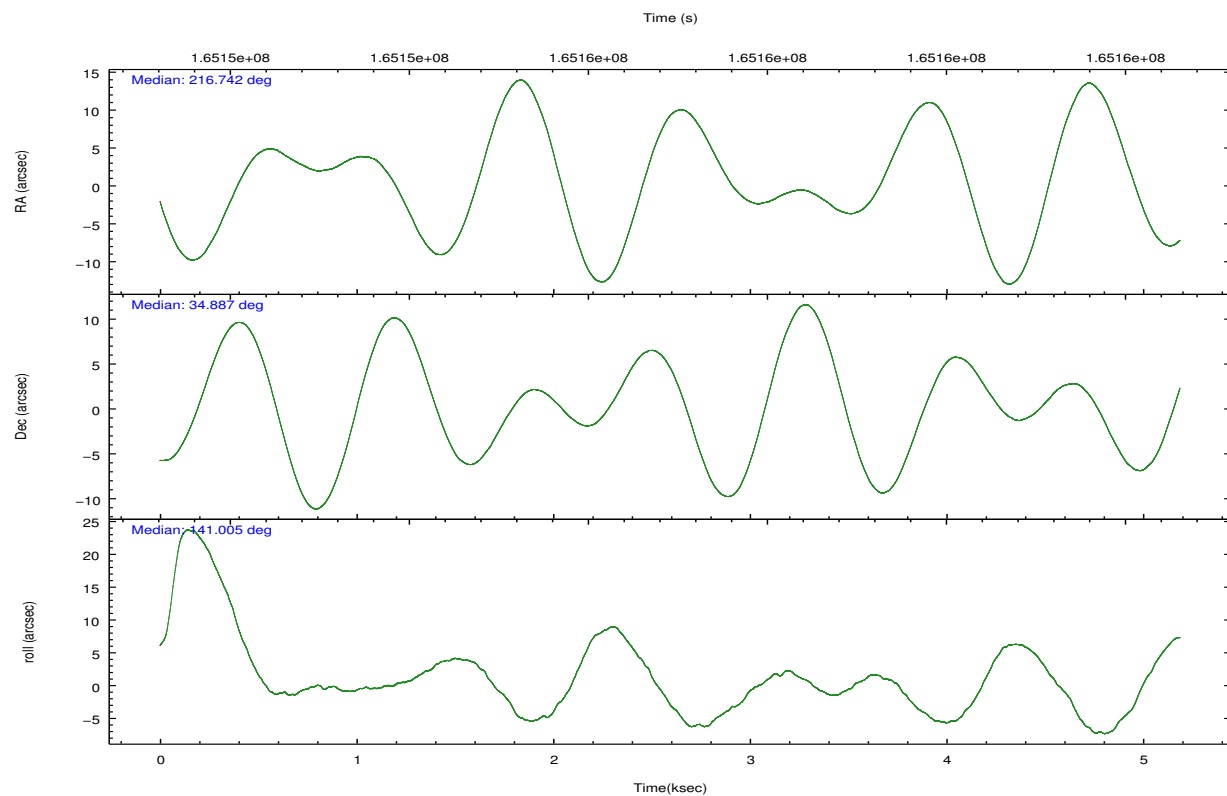
	ccd 0	ccd 1	ccd 2	ccd 3	ccd 6
grade 0 events	788	829	879	771	938
	3%	3%	3%	2%	3%
grade 1 events	11	7	17	16	5
	0%	0%	0%	0%	0%
grade 2 events	516	505	582	450	442
	2%	2%	2%	1%	1%
grade 3 events	271	301	261	264	292
	1%	1%	0%	1%	1%
grade 4 events	248	275	252	278	240
	1%	1%	0%	1%	0%
grade 5 events	744	711	625	779	779
	3%	3%	2%	2%	3%
grade 6 events	419	473	385	398	514
	1%	2%	1%	1%	2%
grade 7 events	18322	19664	23149	23263	20886
	85%	86%	88%	88%	86%

2.2 Compared Parameters

Parameter	Planned	Actual	Parameter	Planned	Actual
Instrument	ACIS	ACIS	Obspar format version number	7	7
Detector	ACIS-01236	ACIS-01236	Obspar file type	PREDICTED	ACTUAL
Grating	NONE	NONE	Obspar update status	NONE	UPDATED
Data mode	VFAINT	VFAINT	Number of optional ACIS chips dropped	0	0
Observation mode	POINTING	POINTING	On-chip summing requested	N	N
[deg] Pointing RA	216.774591	216.7415066152166	Subarray requested	NONE	NONE
[deg] Pointing Dec	34.882698	34.88678972655039	Alternating exposures requested	N	N
[deg] Pointing Roll	140.782656	141.0102655243045	[s] Primary exposure time	0.000000	3.1
[mm] SIM focus pos	-0.782348	-0.7809083437167272			
[mm] SIM defocus	0	0.001439871863259334			
[mm] SIM translation stage pos	-233.592463	-233.5874344608287			
[mm] SIM translation stage offset	0	-0.005018542100998502			
[s] Observation start time (MET)	165153049.184000	165152673.96491			
Observation start date	2003-03-27T11:49:45	2003-03-27T11:44:33			
[s] Observation end time (MET)	165158049.184000	165158183.34014			
Observation end date	2003-03-27T13:13:05	2003-03-27T13:16:23			
Read mode	TIMED	TIMED			

2.3 Aspect



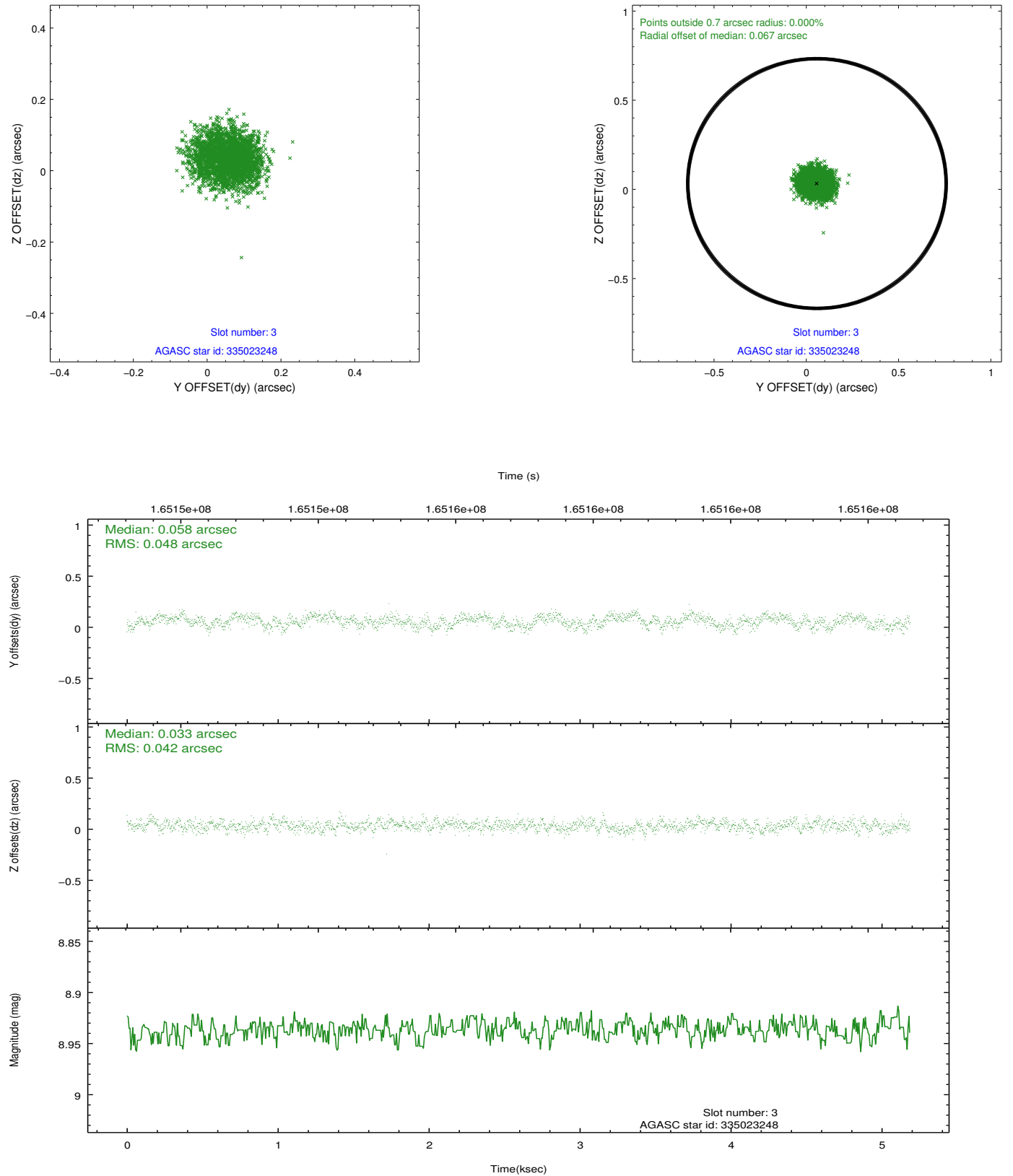


Slot Statistics

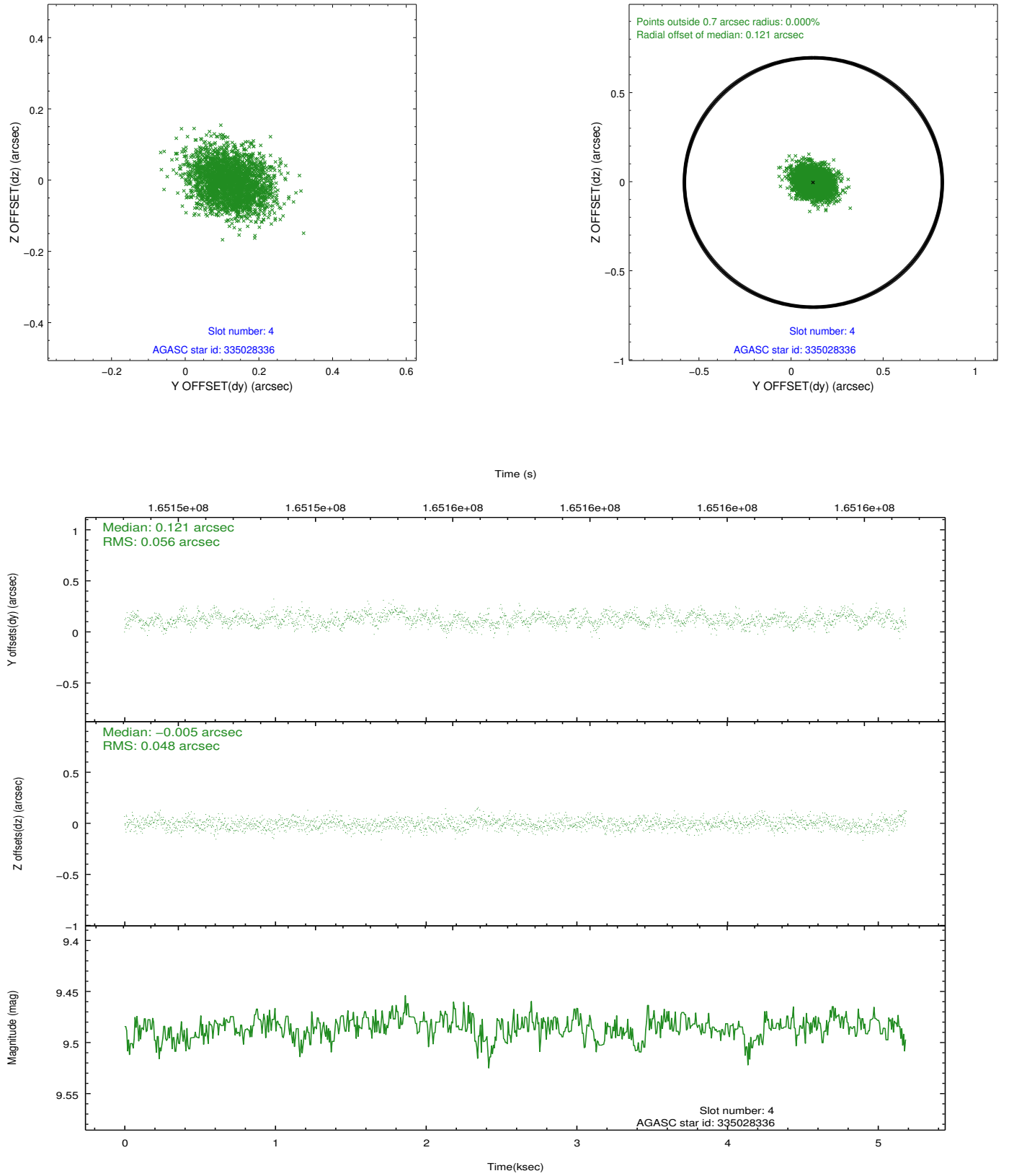
slot	status	id	mag	n_pts	med_dy	med_dz	dr1	dr2	ra	dec	mean_y	mean_z
0	FID	ACIS-I-1	7.25	1265	0.072	-0.051	0.007	0.018	0.000000	0.000000	936.43	-830.54
1	FID	ACIS-I-5	7.24	1266	0.078	0.156	0.007	0.035	0.000000	0.000000	-1811.10	1066.46
2	FID	ACIS-I-6	7.25	1266	-0.242	-0.035	0.008	0.040	0.000000	0.000000	400.30	1712.19
3	GUIDE	335023248	8.94	2531	0.058	0.033	0.070	0.108	217.634832	34.944512	-1818.72	-1786.06
4	GUIDE	335028336	9.49	2527	0.121	-0.005	0.080	0.126	217.189840	34.665629	-1445.39	-174.82
5	GUIDE	335030384	8.84	2530	0.089	-0.149	0.066	0.106	216.806407	34.722197	-438.52	387.82
6	GUIDE	335414448	7.37	2531	-0.162	0.122	0.061	0.117	216.992261	35.577204	1087.26	-2340.20
7	GUIDE	334496656	9.87	2528	-0.111	0.005	0.115	0.186	215.929218	35.031287	2276.03	1152.26

2.4 Star Slots

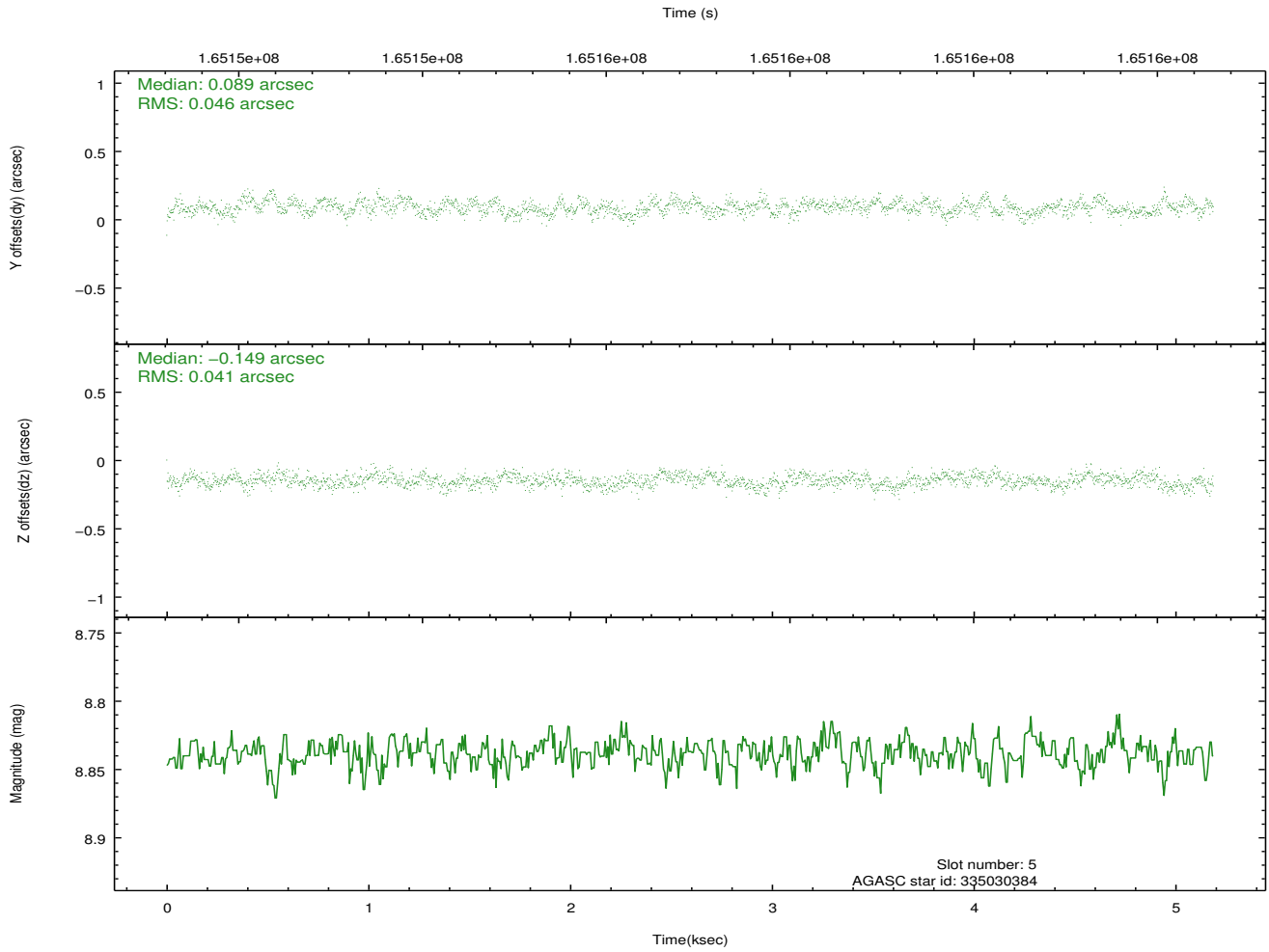
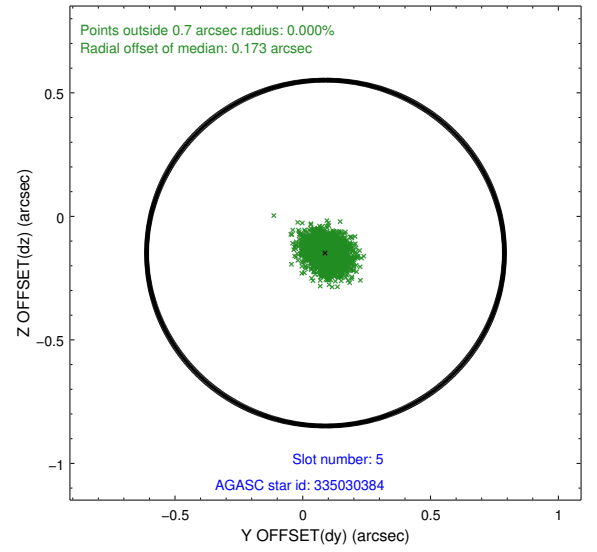
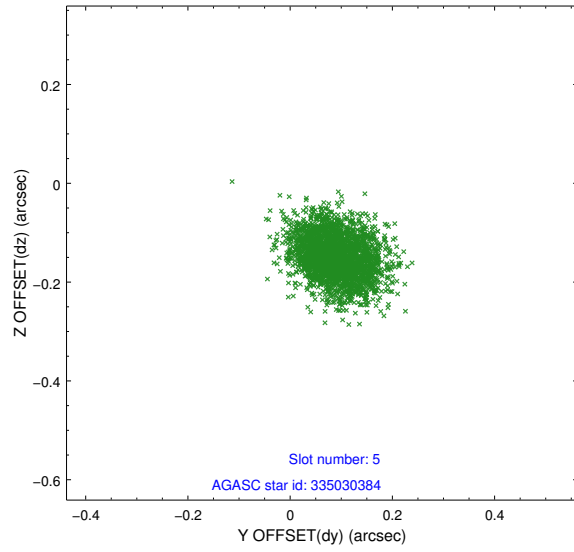
2.4.1 Slot 3



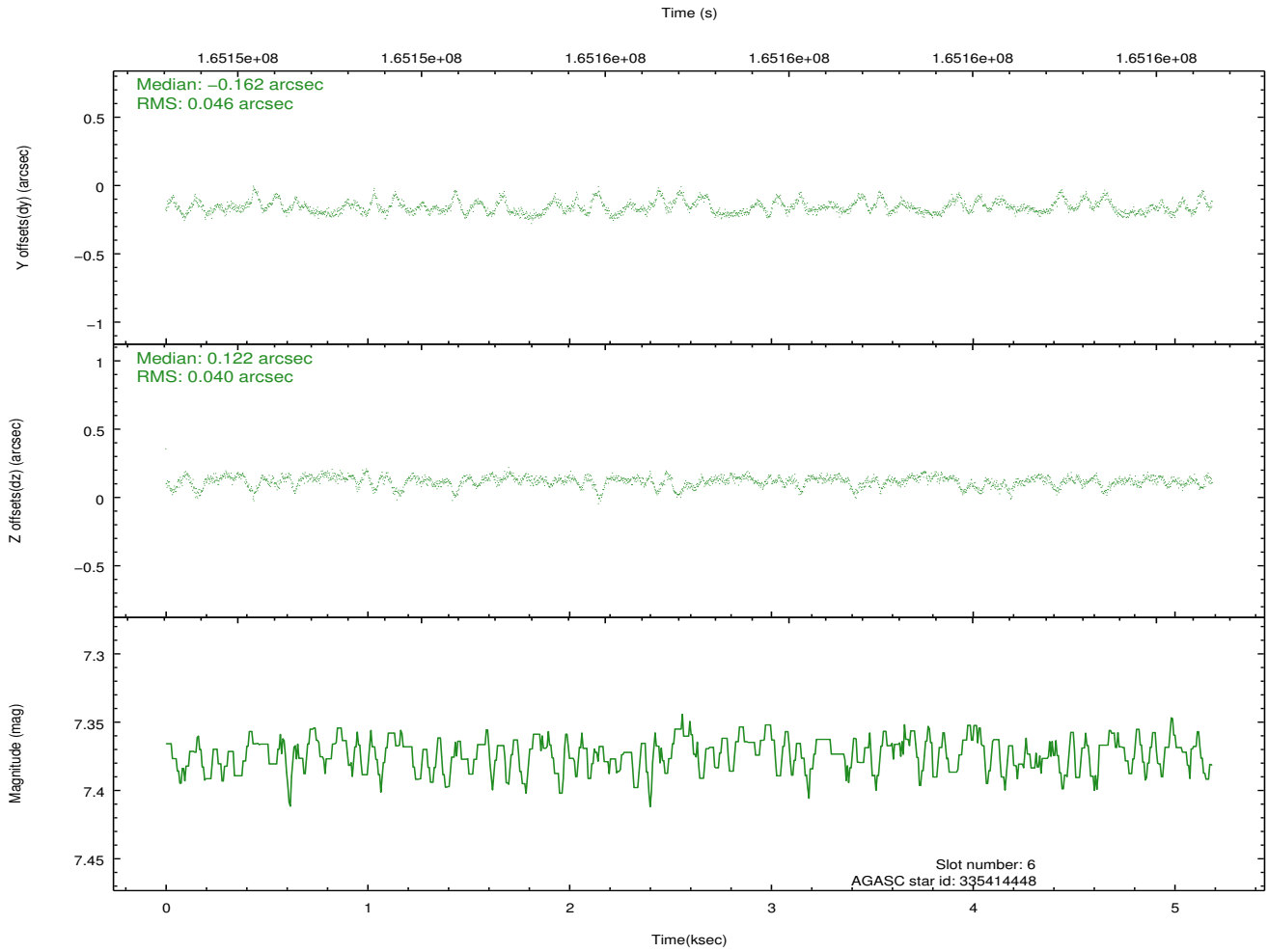
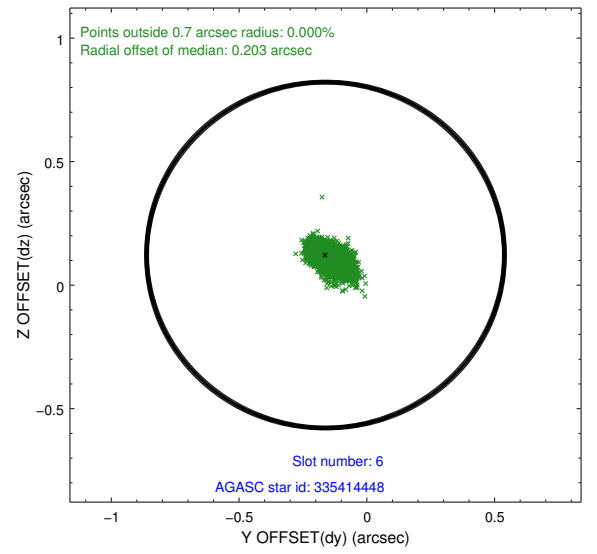
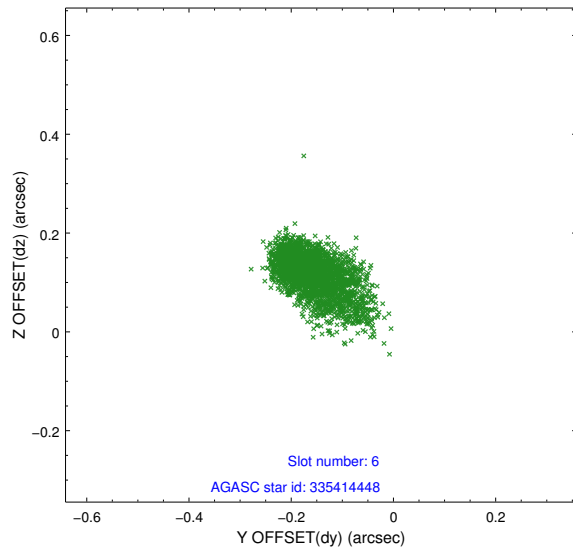
2.4.2 Slot 4



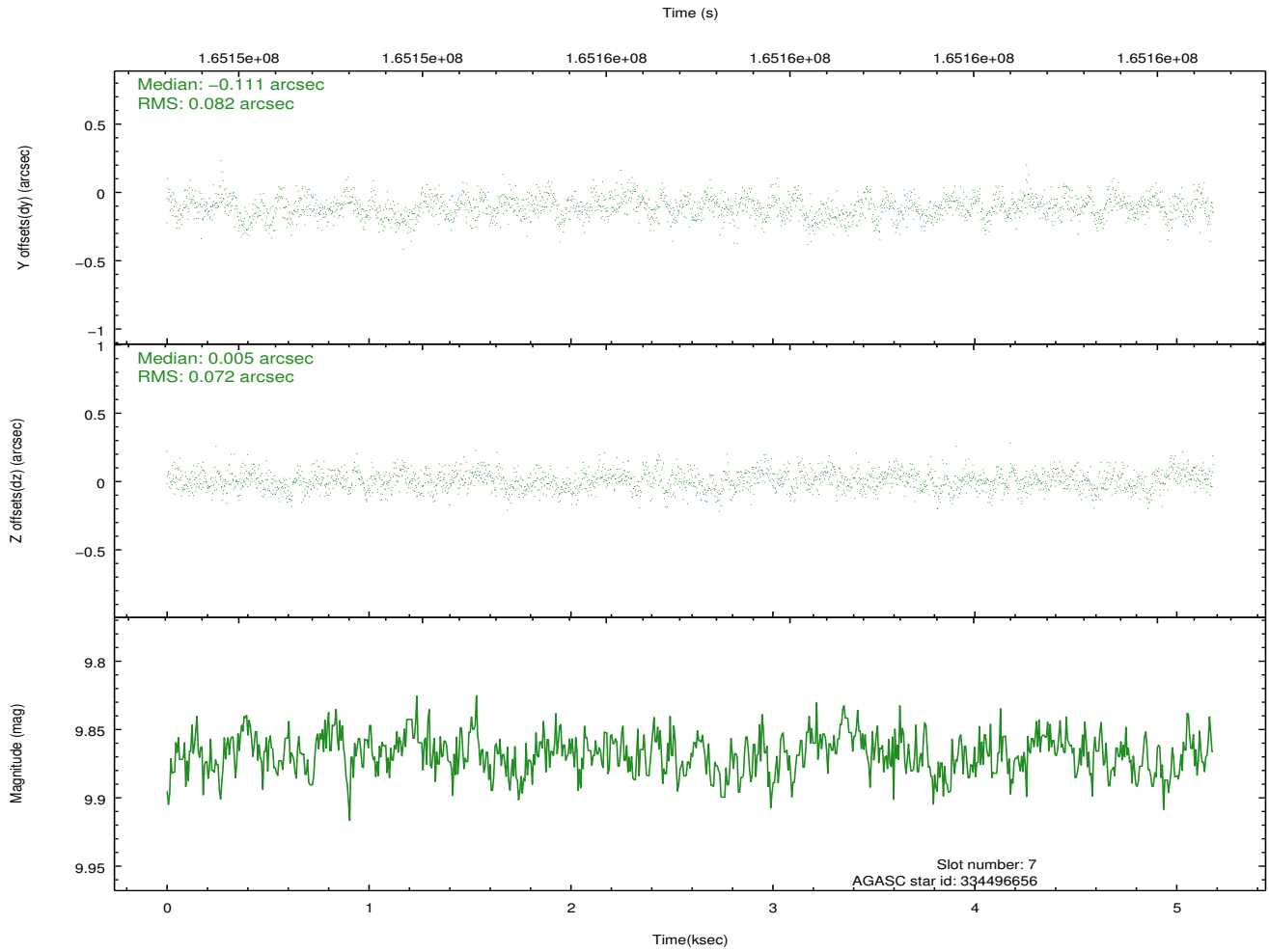
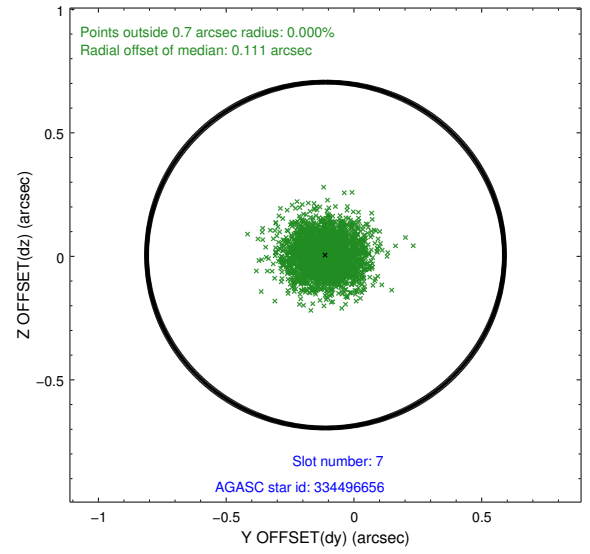
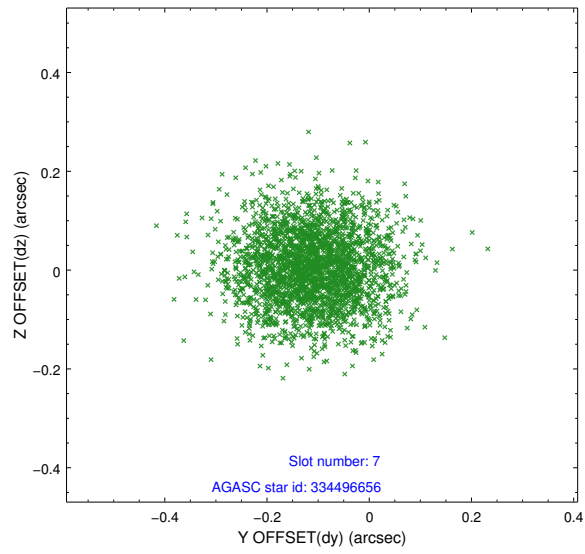
2.4.3 Slot 5



2.4.4 Slot 6

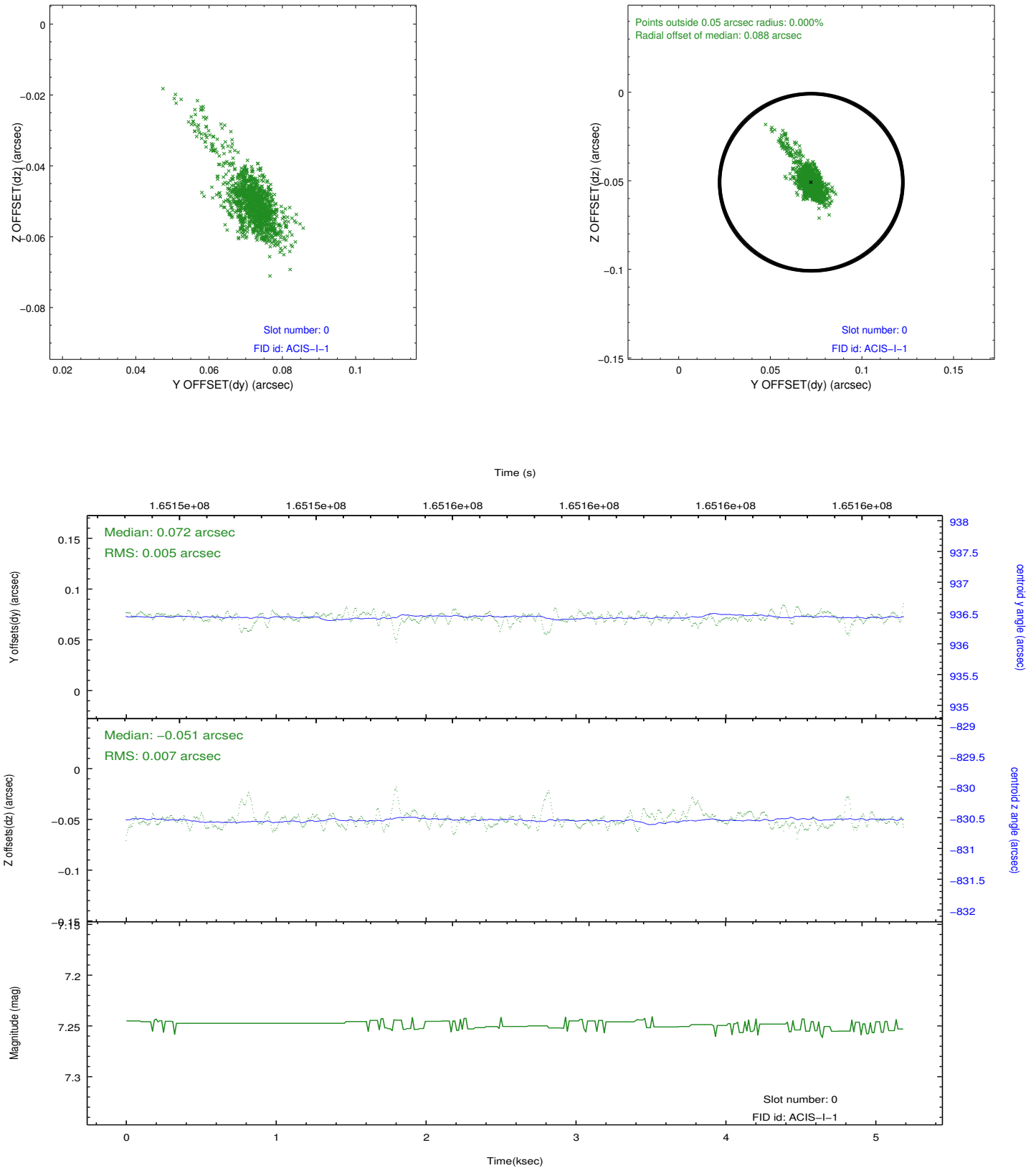


2.4.5 Slot 7

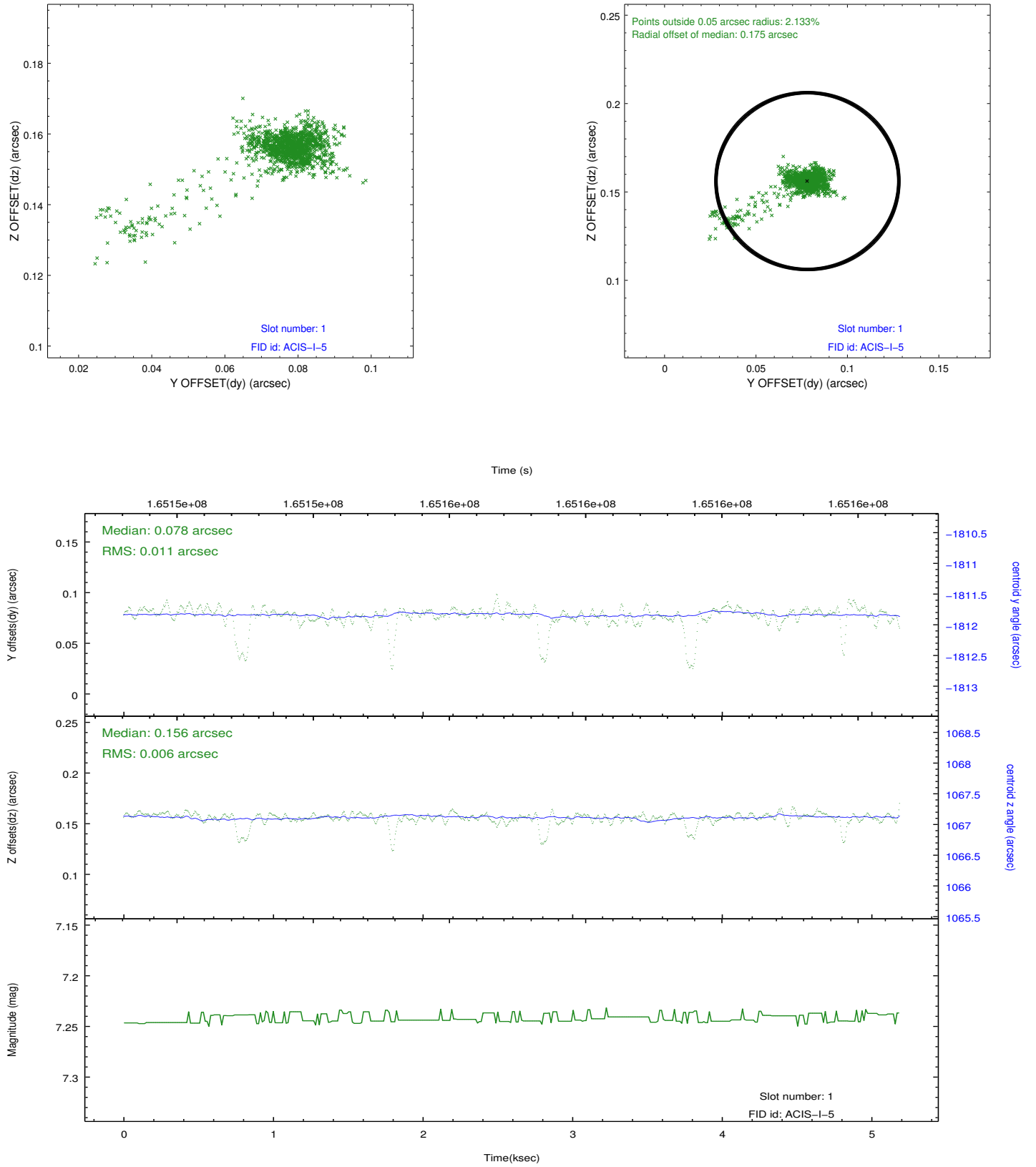


2.5 FID Slots

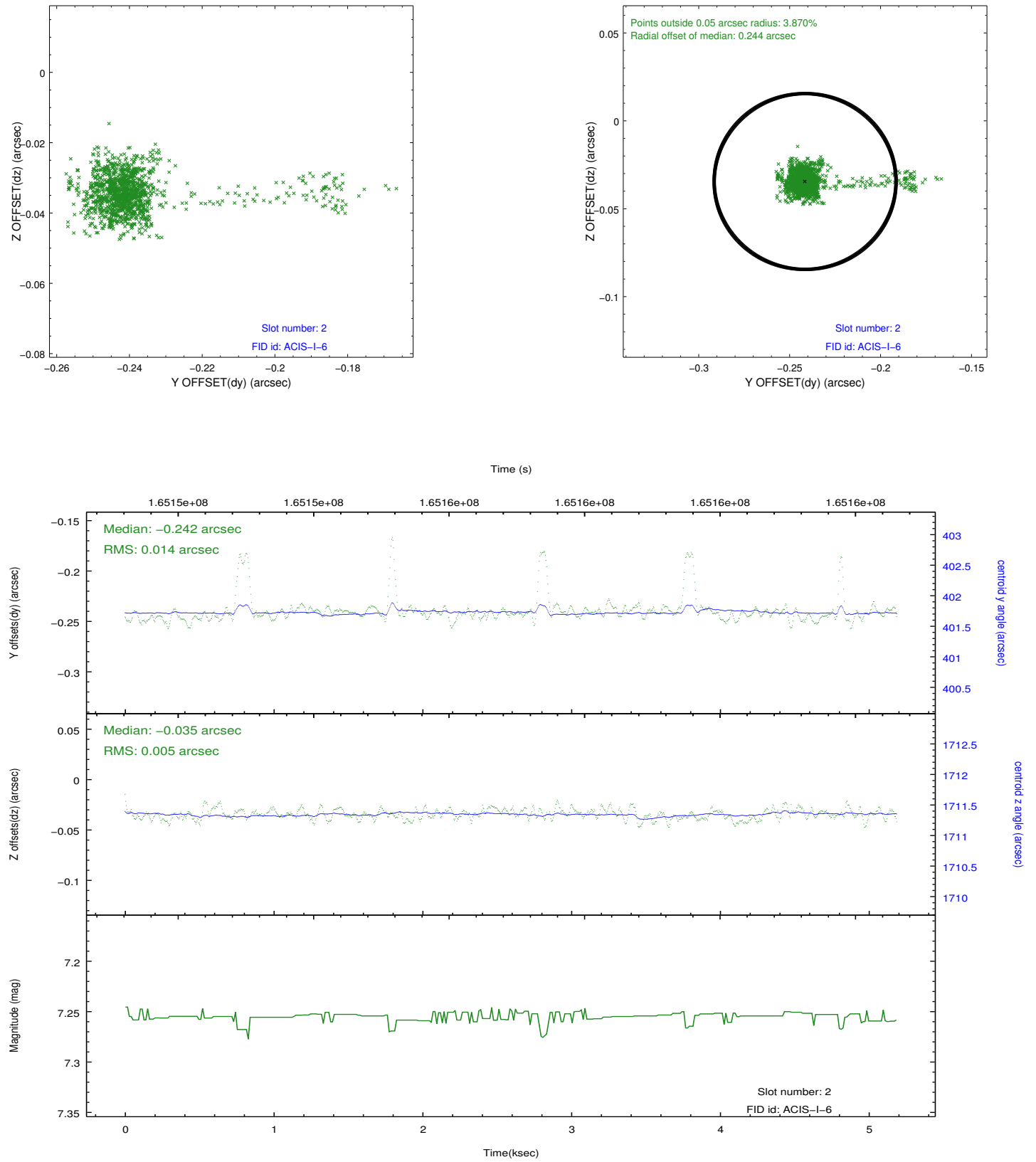
2.5.1 Slot 0



2.5.2 Slot 1



2.5.3 Slot 2



A Summary

A.1 Status

V&V Scientist	Jen Lauer
V&V Date (YYYY-MM-DD)	2012.11.08
V&V Edition	1
V&V Disposition and Status	OK
V&V Charge Time	4.777

A.2 Comments