

V&V Reference Report

L2 ASCDS Version : 7.6.8

Observation 3635 - L2 Version 001
Chandra X-Ray Center

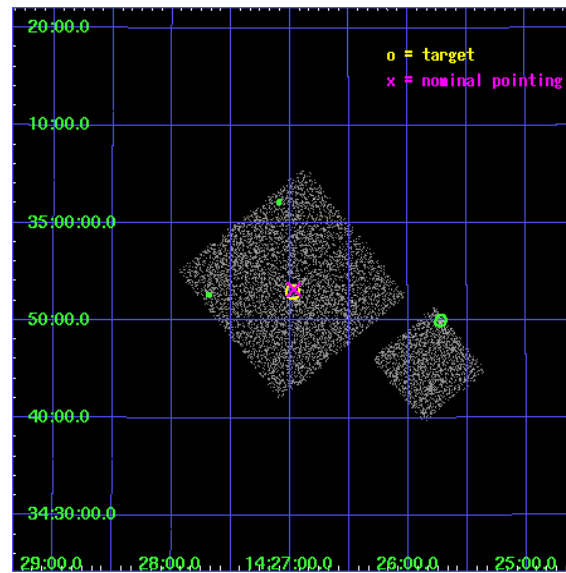
L2 Processing Date : Jul 29 2006

Contents

1	Front	2
2	OBI	3
2.1	OBI	3
2.1.1	Images	3
2.1.2	Bias	3
2.1.3	Parameters	4
2.1.4	Events	4
2.2	Compared Parameters	5
2.3	Aspect	6
2.4	Star Slots	9
2.4.1	Slot 3	9
2.4.2	Slot 4	10
2.4.3	Slot 5	11
2.4.4	Slot 6	12
2.4.5	Slot 7	13
2.5	FID Slots	14
2.5.1	Slot 0	14
2.5.2	Slot 1	15
2.5.3	Slot 2	16
3	Point Sources	17
A	Summary	18
A.1	Status	18
A.2	Comments	18

1 Front

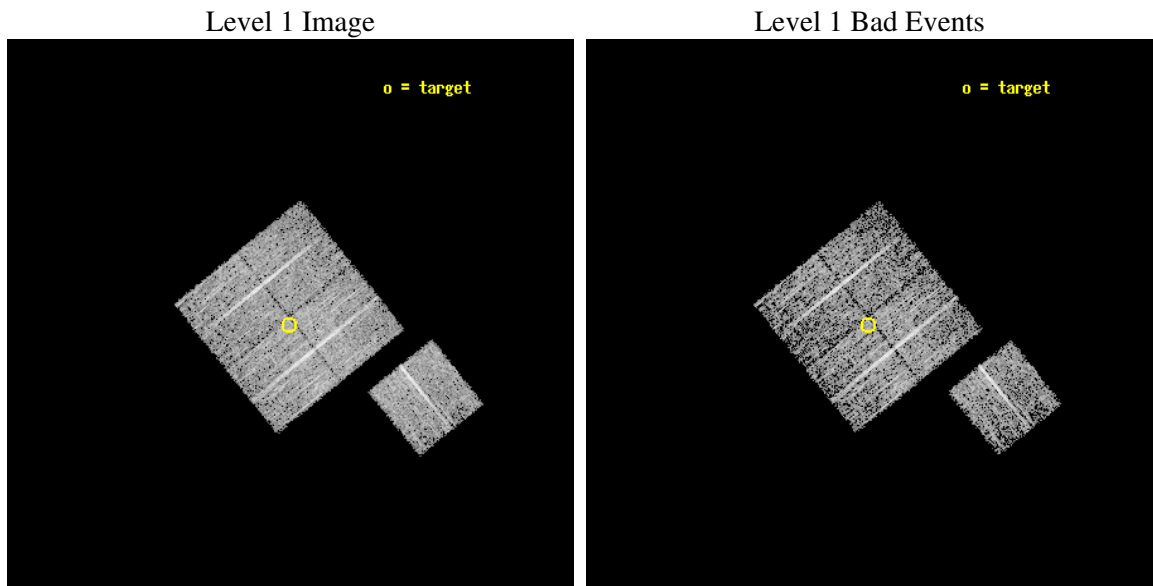
seq_num	900235
obs_id	3635
title	CHANDRA LARGE SCALE SURVEY OF THE NOAO BOOTES DEEP FIELD
observer	Dr. Stephen Murray
object	NOAO FIELD F51
dtcycle	0
cycle	P
ra_targ	216.744263
dec_targ	34.882776
ra_nom	216.74150661522
dec_nom	34.88678972655
roll_nom	141.0102655243
revision	2
ontime	4777.0999908149
livetime	4714.6836625851
ontime0	4777.0999908149
ontime1	4777.0999908149
ontime2	4777.0999908149
ontime3	4777.0999908149
ontime6	4777.0999908149
l2events	9461



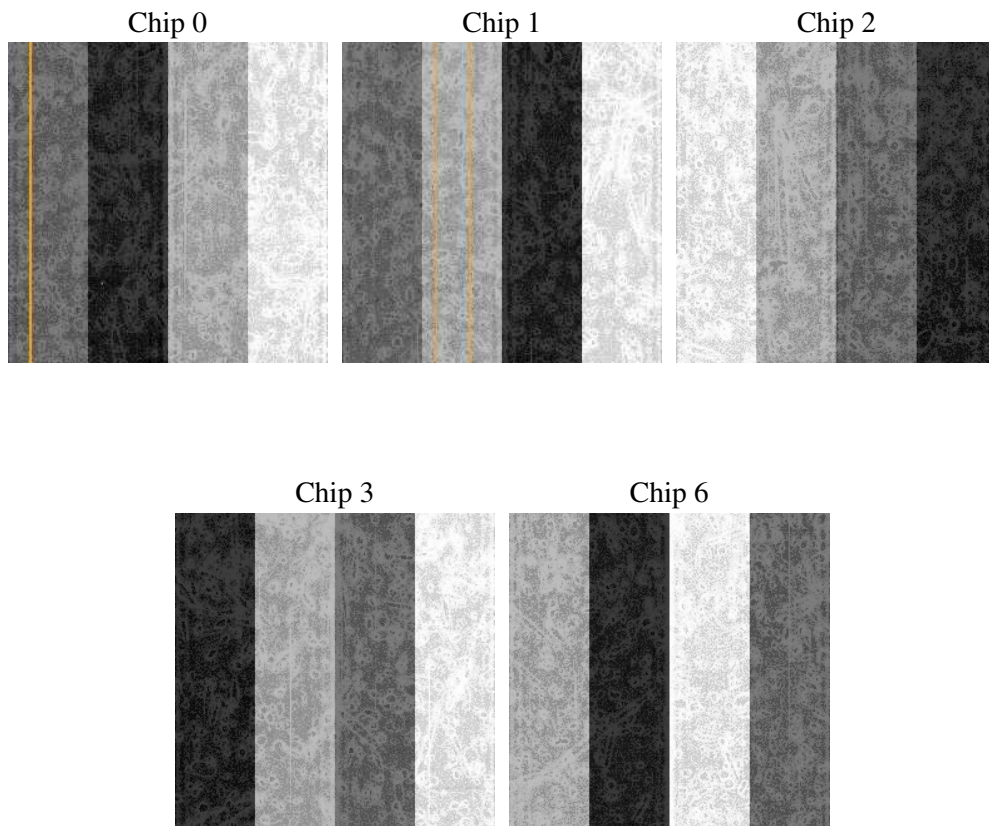
2 OBI

2.1 OBI

2.1.1 Images



2.1.2 Bias



2.1.3 Parameters

obi_num	0
ascdsver	7.6.8
caldsver	3.2.2
date	2006-07-29T16:46:56
revision	2

sched_exp_time	5000.000000
ontime	4780.6212114394
ontime0	4780.6212313175
ontime1	4780.6212313175
ontime2	4780.6212114394
ontime3	4780.6212114394
ontime6	4780.6212114394
l1events	120549

2.1.4 Events

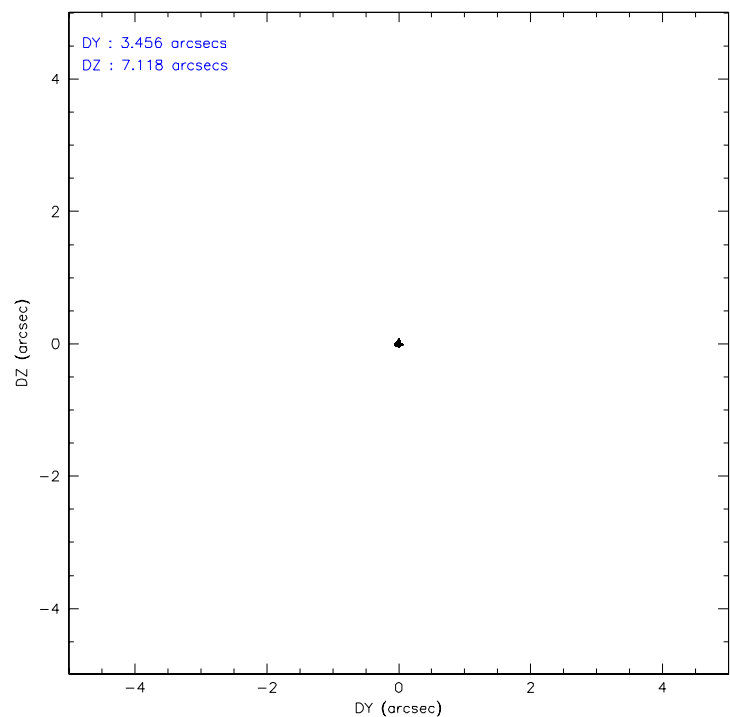
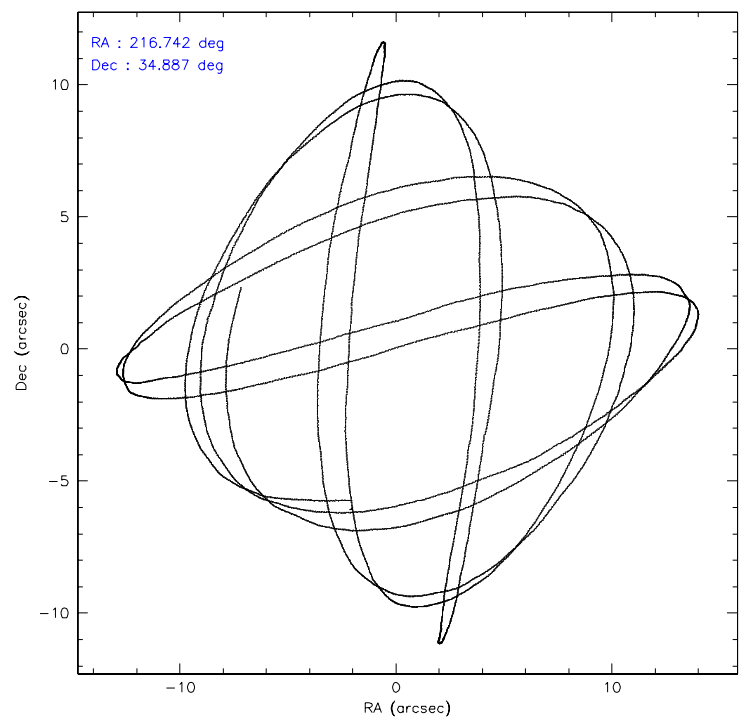
	ccd 0	ccd 1	ccd 2	ccd 3	ccd 6
level 1 events	21319	22765	26150	26219	24096
rejected events	19077	20381	23792	24061	21673
rejected %	89%	89%	90%	91%	89%

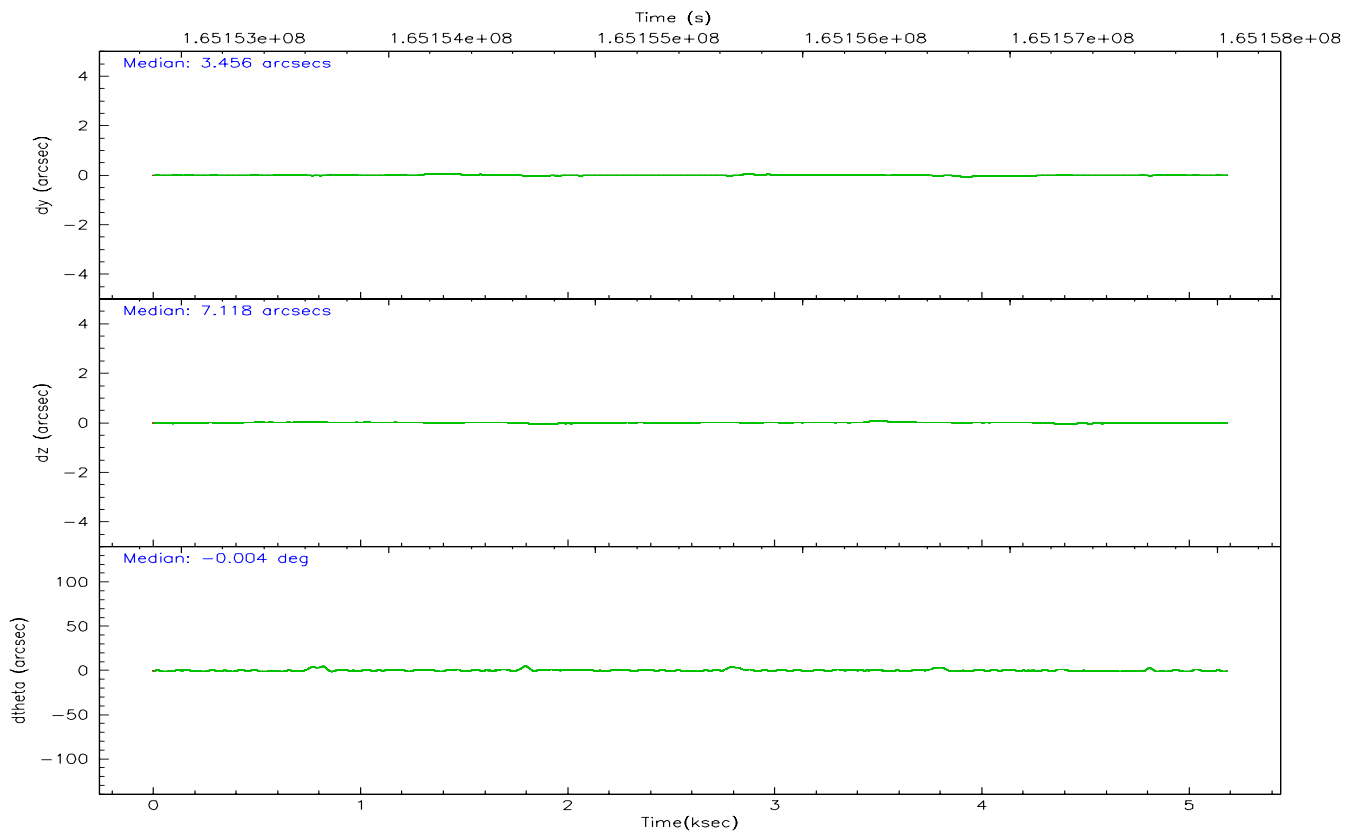
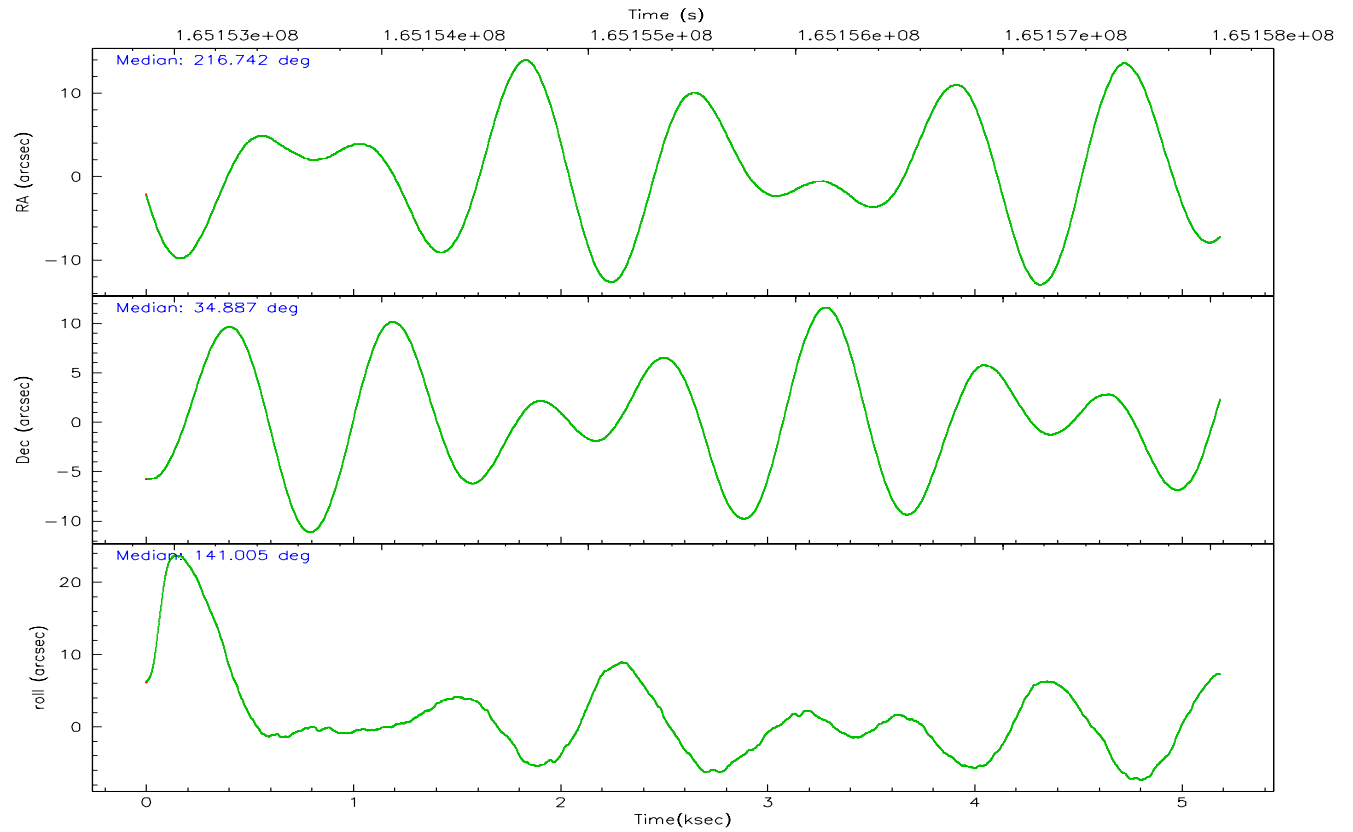
	ccd 0	ccd 1	ccd 2	ccd 3	ccd 6
grade 0 events	788	829	879	771	938
	3%	3%	3%	2%	3%
grade 1 events	11	7	17	16	5
	0%	0%	0%	0%	0%
grade 2 events	516	505	582	450	442
	2%	2%	2%	1%	1%
grade 3 events	271	301	261	264	292
	1%	1%	0%	1%	1%
grade 4 events	247	275	252	278	240
	1%	1%	0%	1%	0%
grade 5 events	742	709	625	779	778
	3%	3%	2%	2%	3%
grade 6 events	421	474	385	398	514
	1%	2%	1%	1%	2%
grade 7 events	18323	19665	23149	23263	20887
	85%	86%	88%	88%	86%

2.2 Compared Parameters

Parameter	Planned	Actual	Parameter	Planned	Actual
Instrument	ACIS	ACIS	Obspar format version number	6	6
Detector	ACIS-01236	ACIS-01236	Obspar file type	PREDICTED	ACTUAL
Grating	NONE	NONE	Obspar update status	NONE	UPDATED
Data mode	VFAINT	VFAINT	On-chip summing requested	N	N
Observation mode	POINTING	POINTING	Subarray requested	NONE	NONE
Pointing RA	216.774591	216.7415066152166	Alternating exposures requested	N	N
Pointing Dec	34.882698	34.88678972655041	Primary exposure time	0.000000	3.1
Pointing Roll	140.782656	141.0102655243045			
SIM focus pos (mm)	-0.782348	-0.7809083437167272			
SIM defocus (mm)	0	0.001439871863259334			
SIM translation stage pos (mm)	-233.592463	-233.5874344608287			
SIM translation stage offset (mm)	0	-0.005018542100998502			
Observation start time	165153049.184000	165152673.96491			
Observation start date	2003-03-27T11:49:45	2003-03-27T11:44:33			
Observation end time	165158049.184000	165158183.34014			
Observation end date	2003-03-27T13:13:05	2003-03-27T13:16:23			
Read mode	TIMED	TIMED			

2.3 Aspect



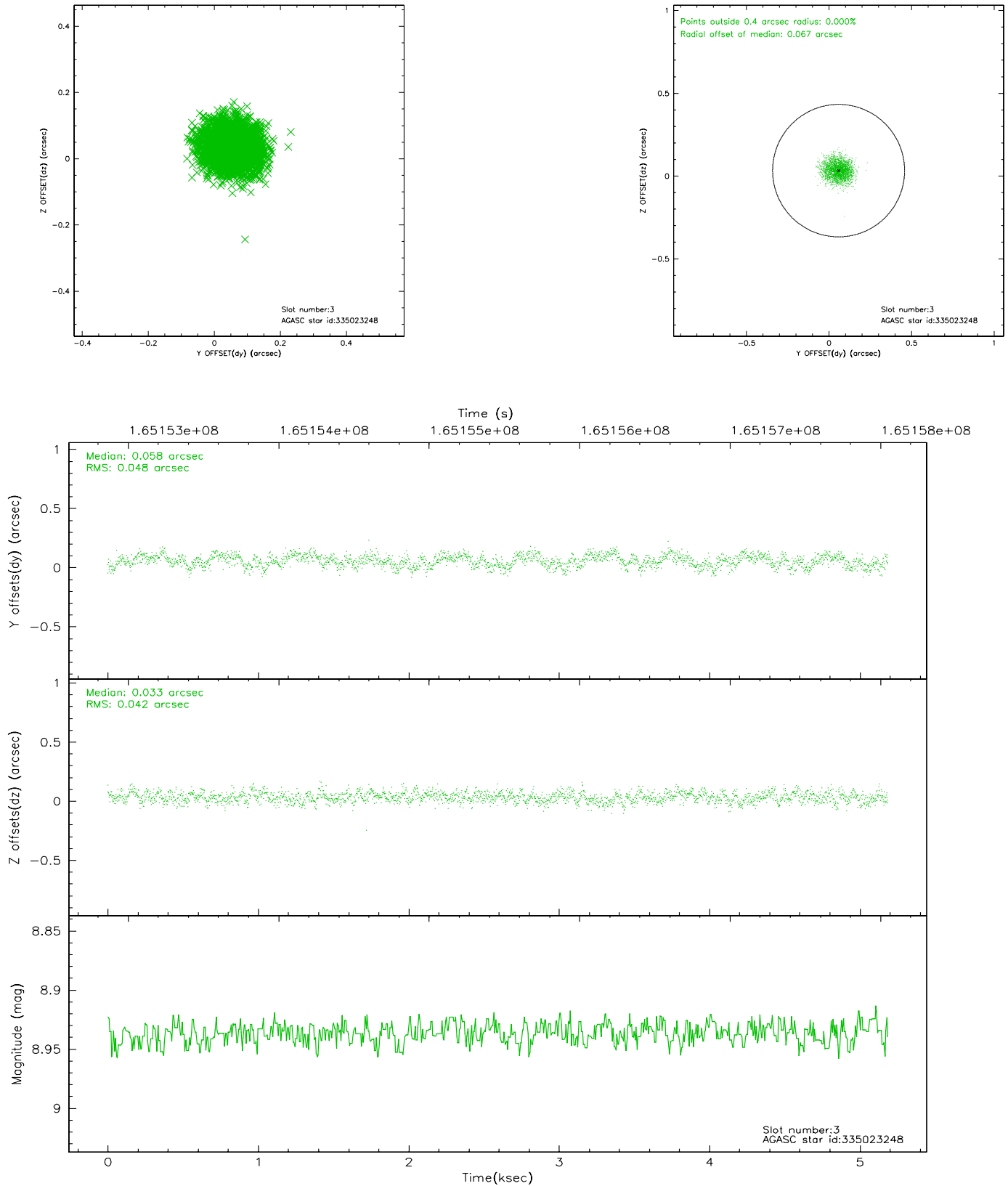


Slot Statistics

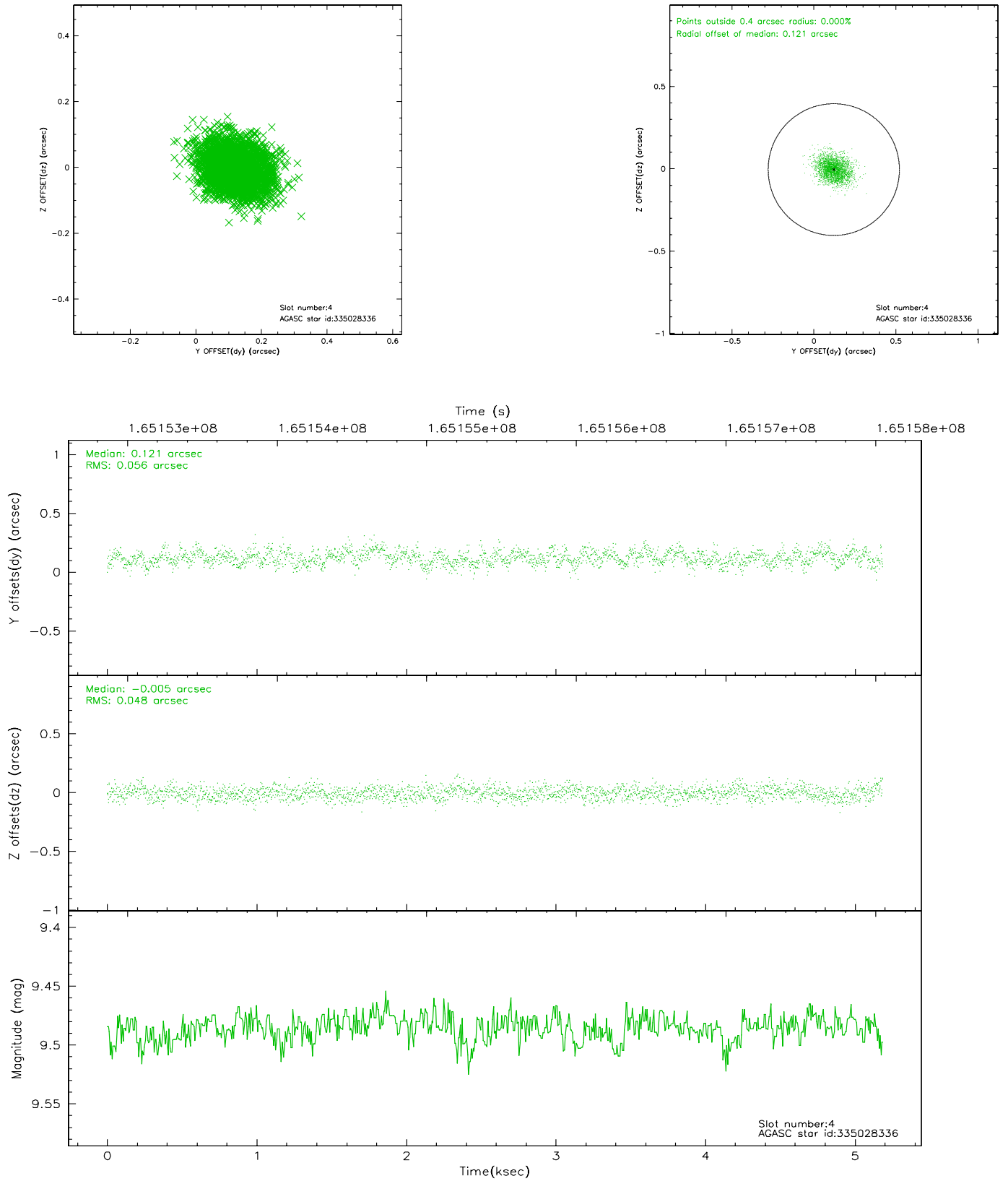
slot	status	id	mag	n_pts	med_dy	med_dz	dr1	dr2	ra	dec	mean_y	mean_z
0	FID	ACIS-I-1	7.25	1265	0.052	-0.024	0.007	0.016	0.000000	0.000000	936.41	-830.50
1	FID	ACIS-I-5	7.24	1266	0.108	0.148	0.007	0.036	0.000000	0.000000	-1811.07	1066.46
2	FID	ACIS-I-6	7.25	1266	-0.252	-0.054	0.008	0.039	0.000000	0.000000	400.29	1712.18
3	GUIDE	335023248	8.94	2531	0.058	0.033	0.070	0.108	217.634832	34.944512	-1818.72	-1786.06
4	GUIDE	335028336	9.49	2527	0.121	-0.005	0.080	0.126	217.189840	34.665629	-1445.39	-174.82
5	GUIDE	335030384	8.84	2530	0.089	-0.149	0.066	0.106	216.806407	34.722197	-438.52	387.82
6	GUIDE	335414448	7.37	2531	-0.162	0.122	0.061	0.117	216.992261	35.577204	1087.26	-2340.20
7	GUIDE	334496656	9.87	2528	-0.111	0.005	0.115	0.186	215.929218	35.031287	2276.03	1152.26

2.4 Star Slots

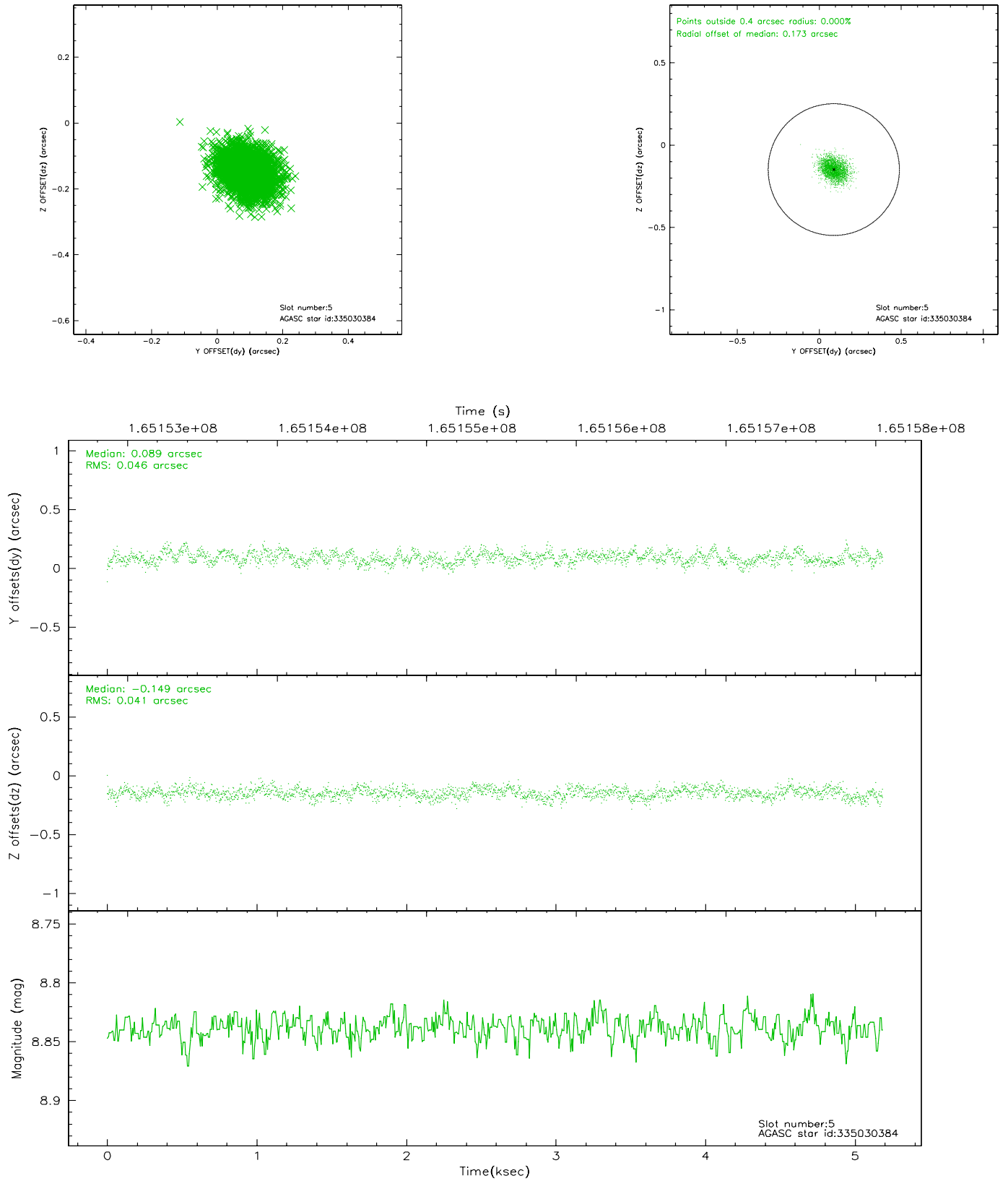
2.4.1 Slot 3



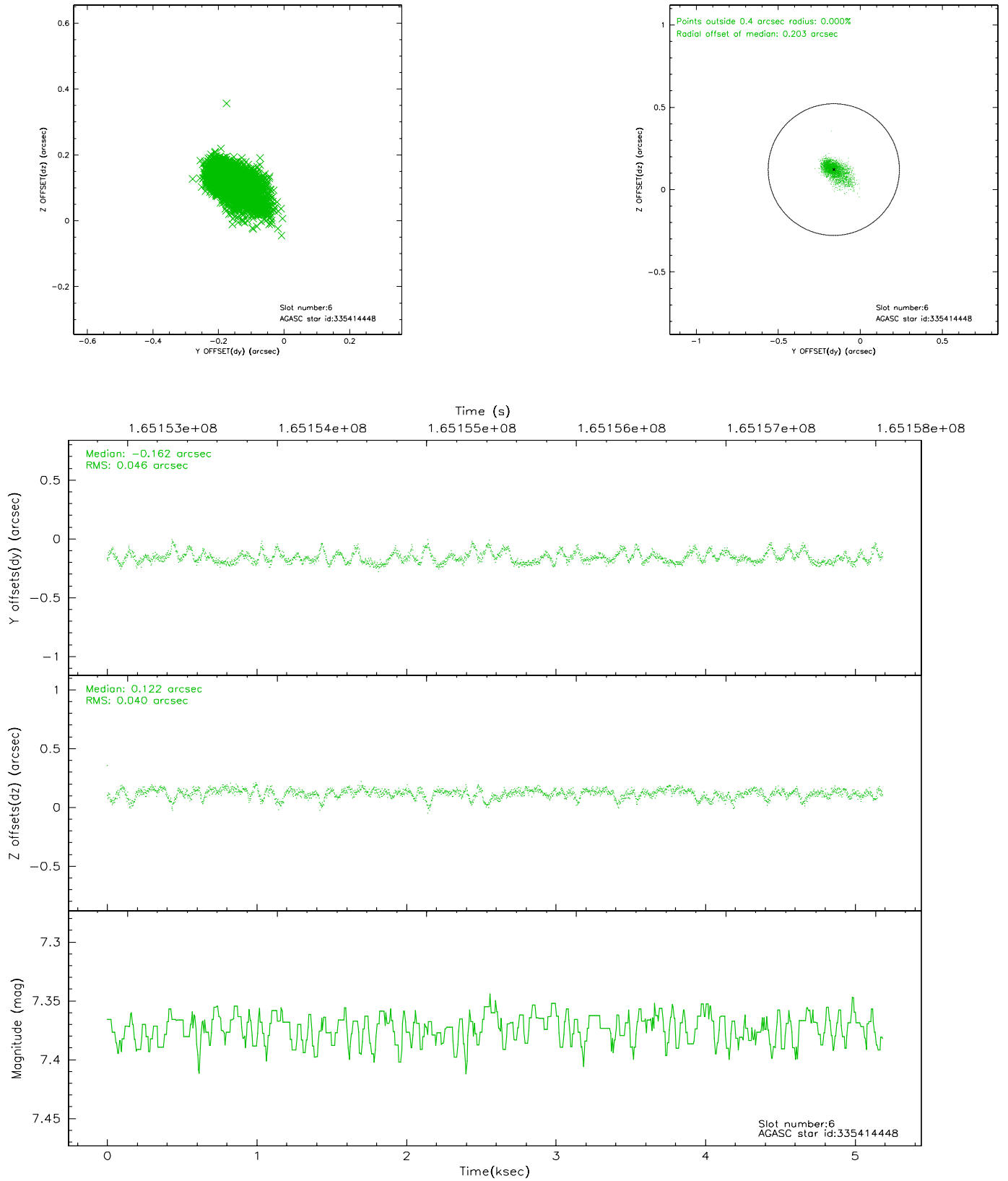
2.4.2 Slot 4



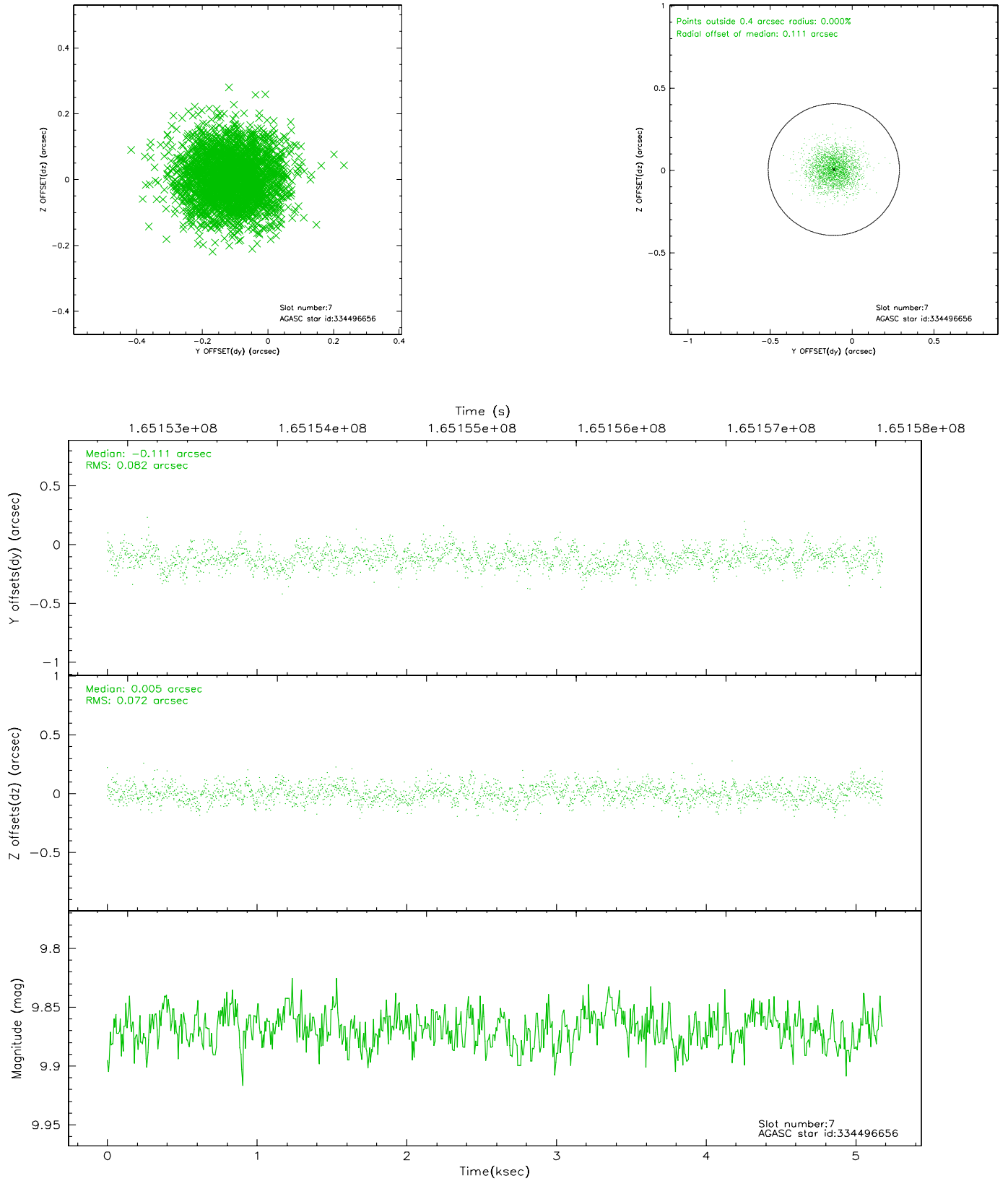
2.4.3 Slot 5



2.4.4 Slot 6

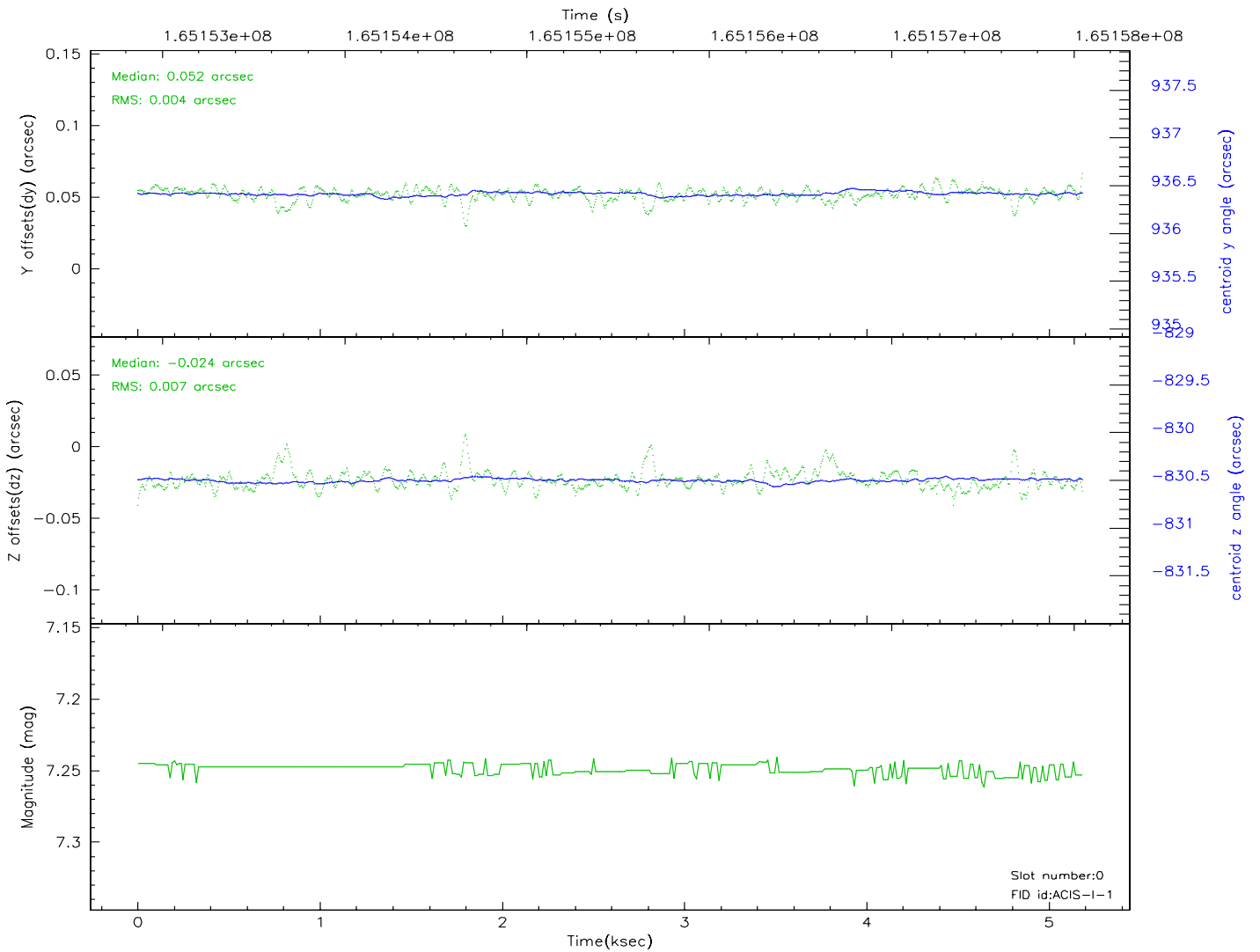
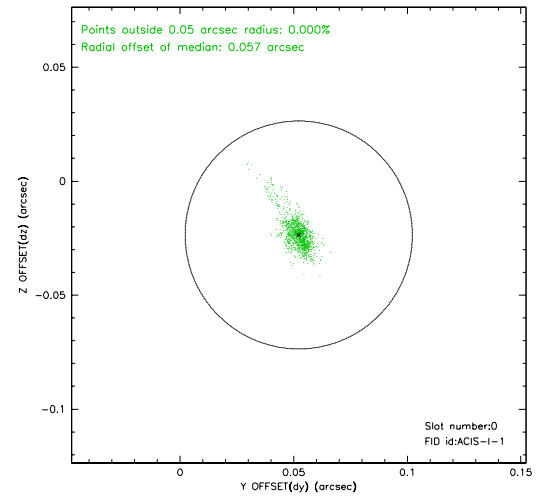
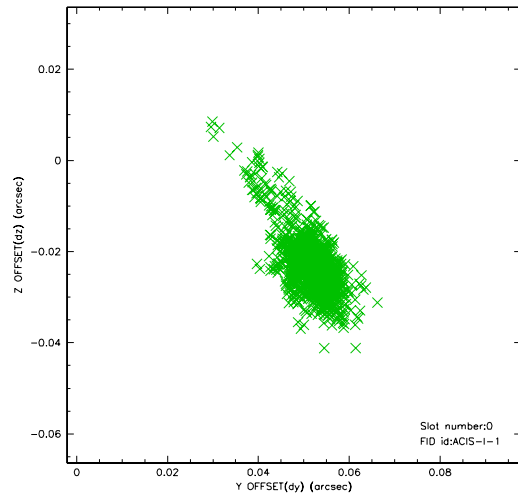


2.4.5 Slot 7

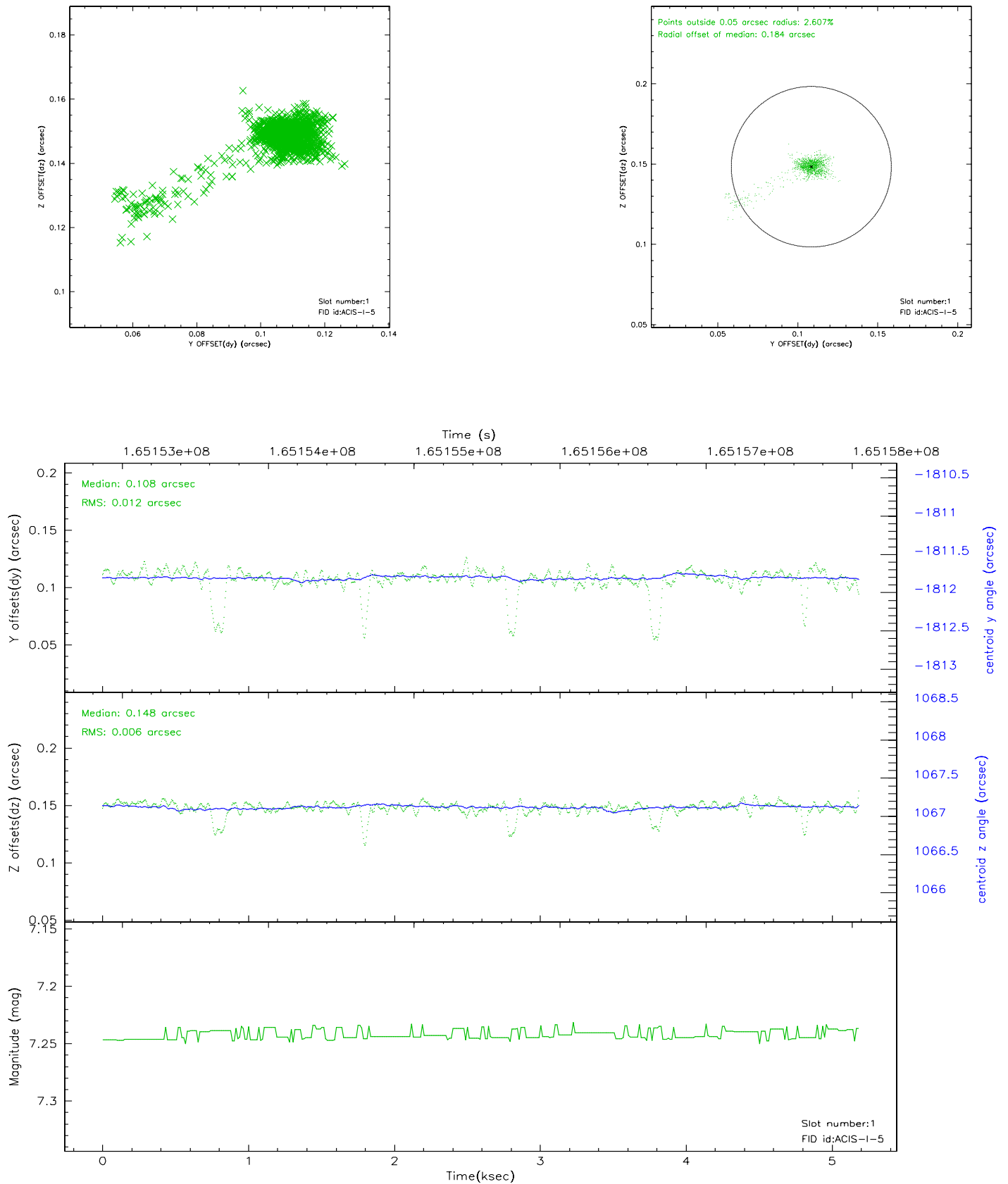


2.5 FID Slots

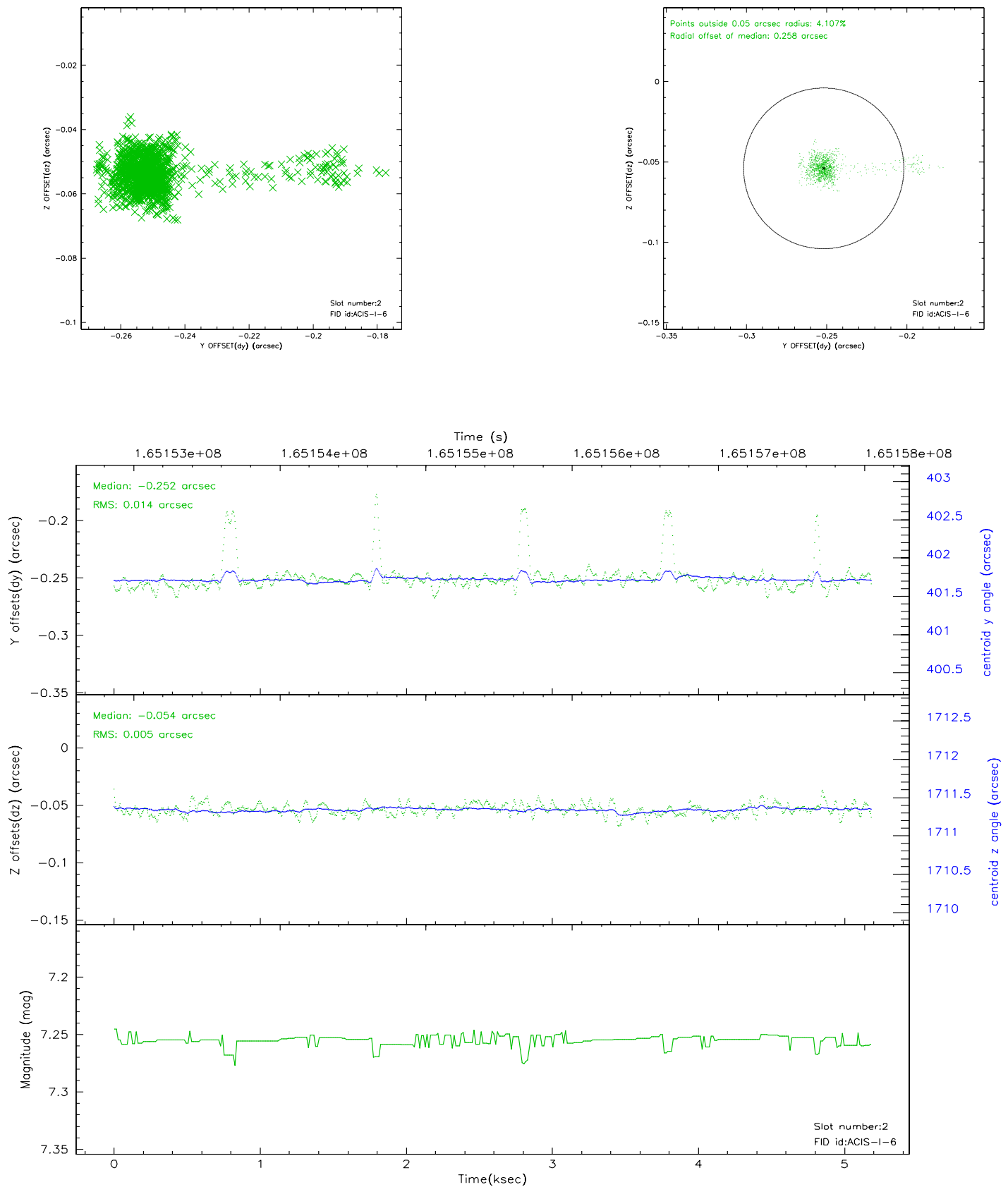
2.5.1 Slot 0



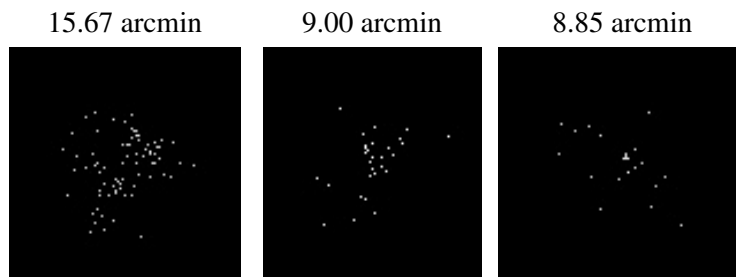
2.5.2 Slot 1



2.5.3 Slot 2



3 Point Sources



A Summary

A.1 Status

V&V Scientist	Jen Lauer
V&V Date (YYYY-MM-DD)	2006.07.30
V&V Edition	1
V&V Disposition and Status	OK
V&V Charge Time	4.777

A.2 Comments