

V&V Reference Report

L2 ASCDS Version : 8.4.5

Observation 3627 - L2 Version 3
Chandra X-Ray Center

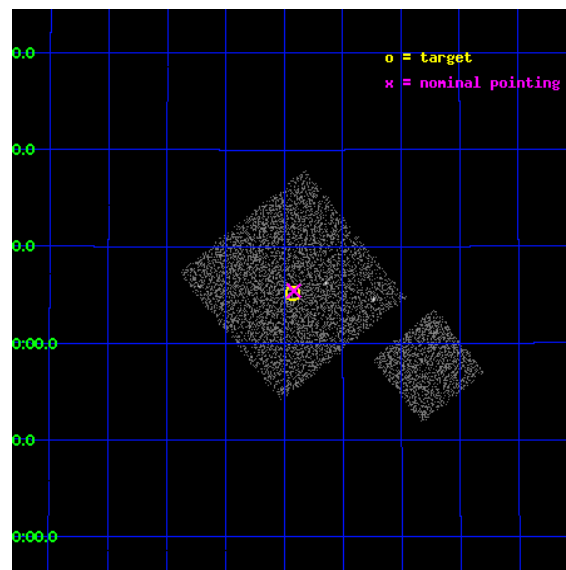
L2 Processing Date : Oct 25 2012

Contents

1	Front	2
2	OBI	3
2.1	OBI	3
2.1.1	Images	3
2.1.2	Bias	3
2.1.3	Parameters	4
2.1.4	Events	4
2.2	Compared Parameters	5
2.3	Aspect	6
2.4	Star Slots	9
2.4.1	Slot 3	9
2.4.2	Slot 4	10
2.4.3	Slot 5	11
2.4.4	Slot 6	12
2.4.5	Slot 7	13
2.5	FID Slots	14
2.5.1	Slot 0	14
2.5.2	Slot 1	15
2.5.3	Slot 2	16
A	Summary	17
A.1	Status	17
A.2	Comments	17

1 Front

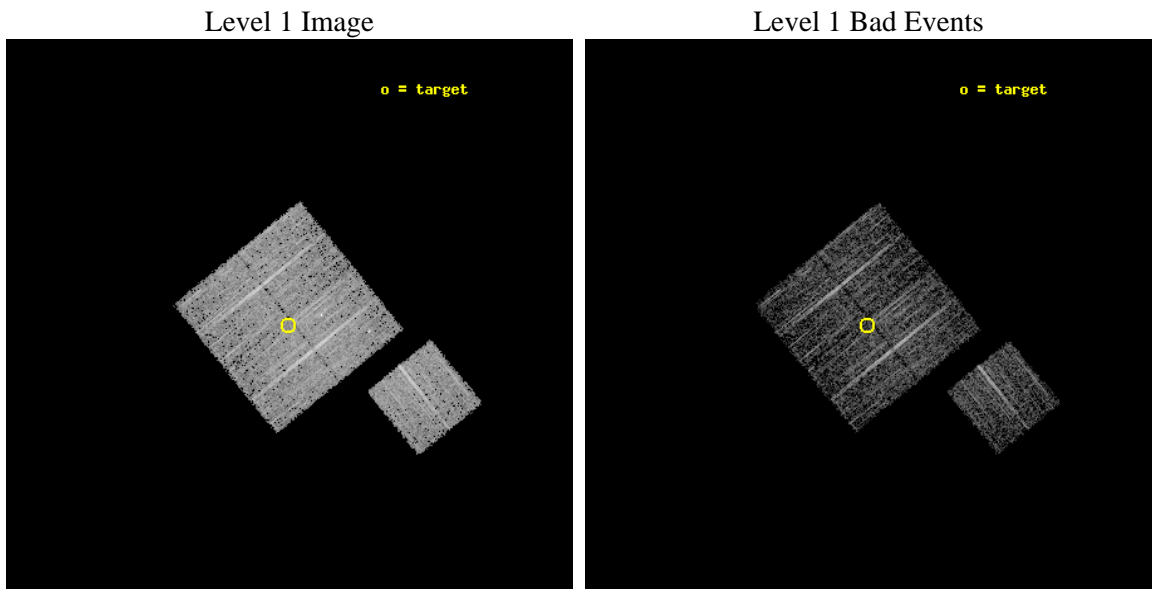
seq_num	900227	Sequence number
obs_id	3627	Observation id
title	CHANDRA LARGE SCALE SURVEY OF THE NOAO BOOTES DEEP FIELD	Proposal
observer	Dr. Stephen Murray	Principal investigator
object	NOAO FIELD F28	Source name
dtcycle	0	
cycle	P	events from which exps? Prim/Second/Both
ra_targ	219.106748	Observer's specified target RA [deg]
dec_targ	35.08647	Observer's specified target Dec [deg]
ra_nom	219.10407618263	Nominal RA [deg]
dec_nom	35.090624222149	Nominal Dec [deg]
roll_nom	141.01024313561	Nominal Roll [deg]
revision	3	Processing version of data
ontime	4776.5891908407	Sum of GTIs [s]
livetime	4714.1795365886	Livetime [s]
ontime0	4773.3250807226	Sum of GTIs [s]
ontime1	4776.5070909262	Sum of GTIs [s]
ontime2	4776.5481508374	Sum of GTIs [s]
ontime3	4776.5891908407	Sum of GTIs [s]
ontime6	4776.4250109196	Sum of GTIs [s]
l2events	10118	Number of level 2 events



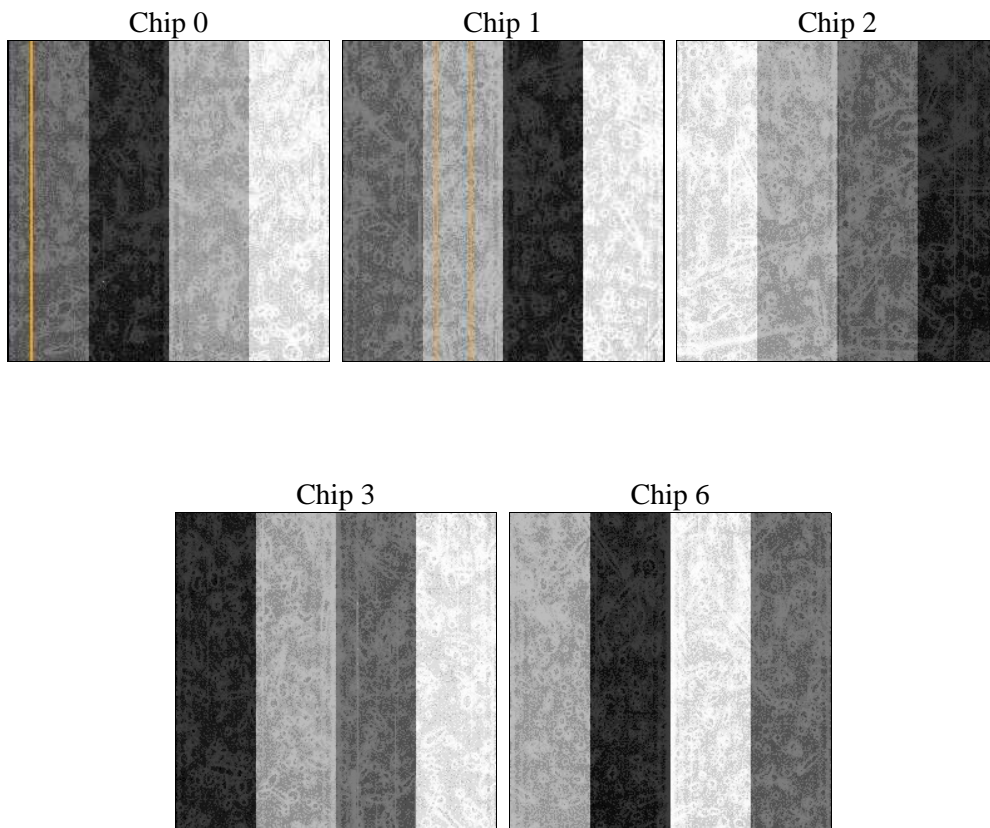
2 OBI

2.1 OBI

2.1.1 Images



2.1.2 Bias



2.1.3 Parameters

obi_num	1	Obi number	sched_exp_time	5000.000000	[s] Scheduled observation exposure time
ascdsver	8.4.5	Processing system revision	ontime	4776.5891908407	Sum of GTIs [s]
caldsver	4.5.2	 	ontime0	4773.3250807226	Sum of GTIs [s]
date	2012-10-25T23:45:19	Date and time of file creation	ontime1	4776.5070909262	Sum of GTIs [s]
revision	3	Processing version of data	ontime2	4776.5481508374	Sum of GTIs [s]
			ontime3	4776.5891908407	Sum of GTIs [s]
			ontime6	4776.4250109196	Sum of GTIs [s]
			l1events	122238	Number of level 1 events

2.1.4 Events

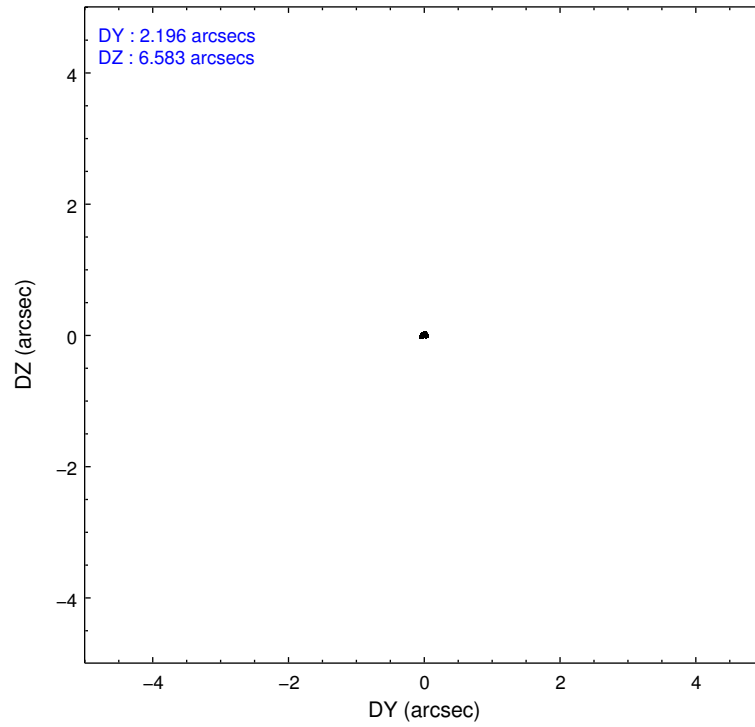
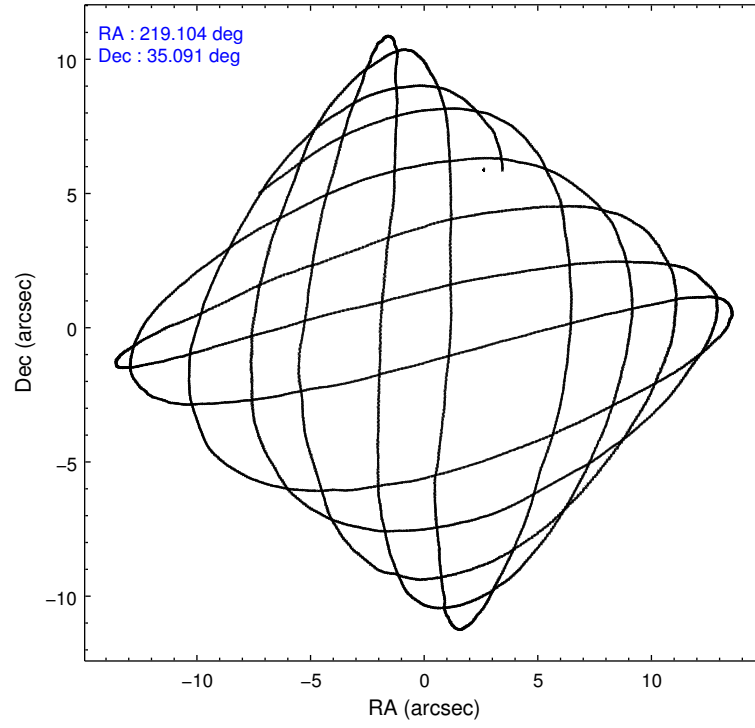
	ccd 0	ccd 1	ccd 2	ccd 3	ccd 6
level 1 events	23587	23476	27369	23656	24150
rejected events	21206	20877	24656	21471	21725
rejected %	89%	88%	90%	90%	89%

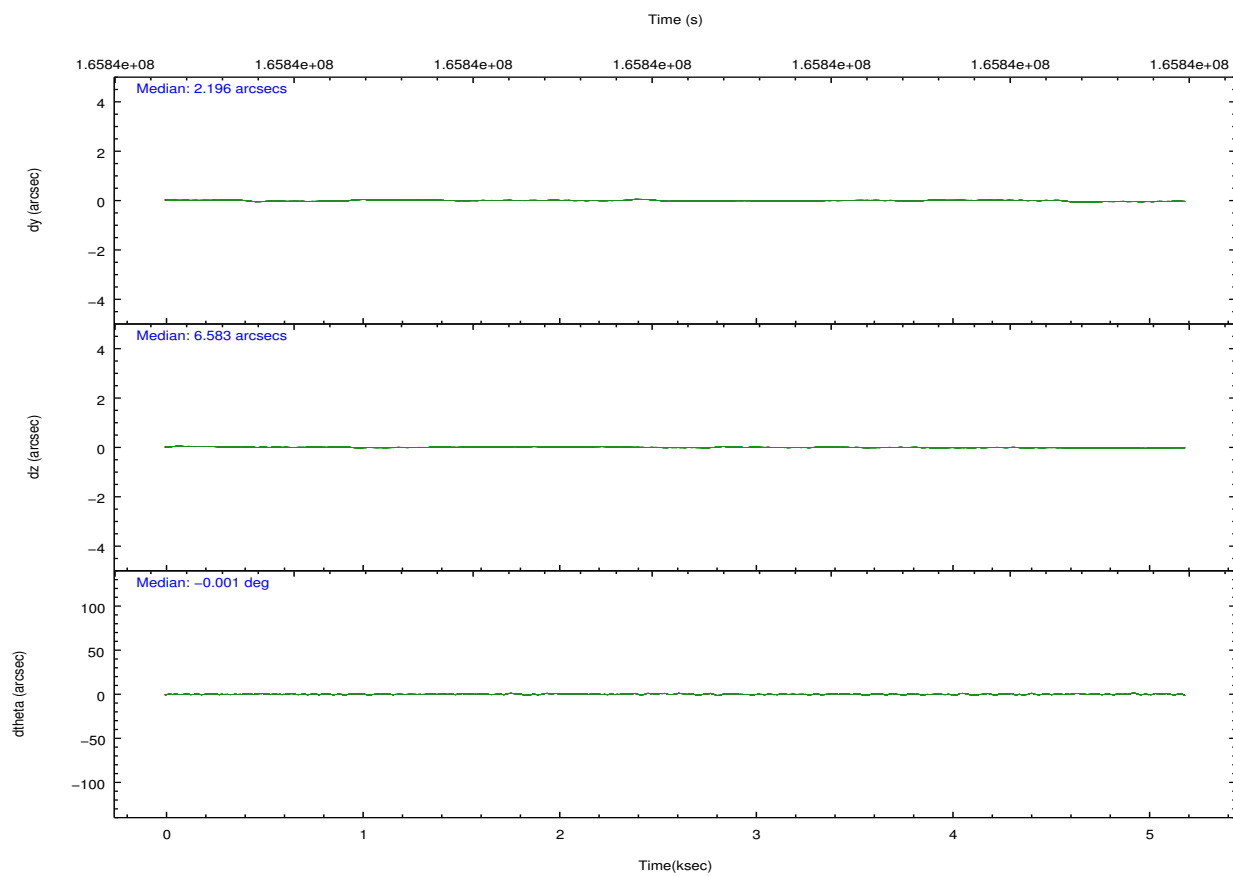
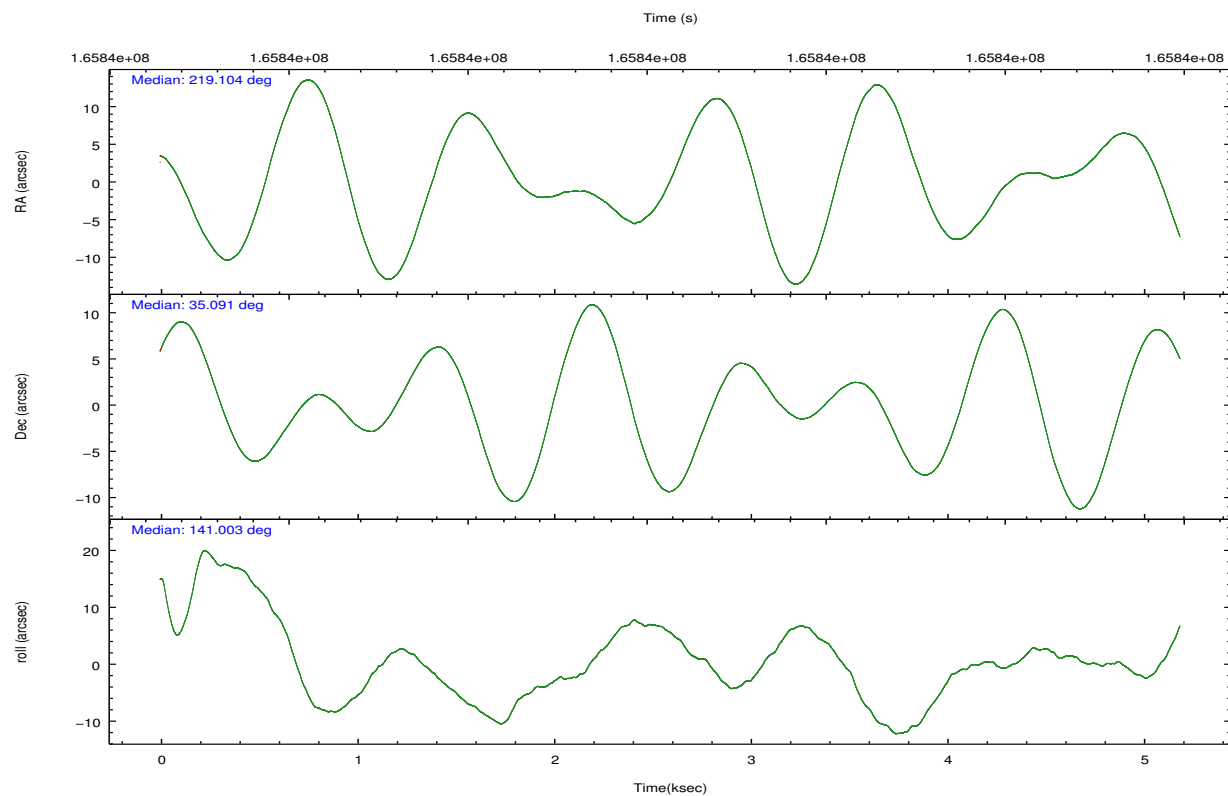
	ccd 0	ccd 1	ccd 2	ccd 3	ccd 6
grade 0 events	837	889	1184	848	883
	3%	3%	4%	3%	3%
grade 1 events	17	9	19	10	8
	0%	0%	0%	0%	0%
grade 2 events	560	559	615	450	463
	2%	2%	2%	1%	1%
grade 3 events	276	323	250	256	263
	1%	1%	0%	1%	1%
grade 4 events	250	295	279	245	317
	1%	1%	1%	1%	1%
grade 5 events	720	752	657	797	800
	3%	3%	2%	3%	3%
grade 6 events	459	535	386	386	500
	1%	2%	1%	1%	2%
grade 7 events	20468	20114	23979	20664	20916
	86%	85%	87%	87%	86%

2.2 Compared Parameters

Parameter	Planned	Actual	Parameter	Planned	Actual
Instrument	ACIS	ACIS	Obspar format version number	7	7
Detector	ACIS-01236	ACIS-01236	Obspar file type	PREDICTED	ACTUAL
Grating	NONE	NONE	Obspar update status	NONE	UPDATED
Data mode	VFAINT	VFAINT	Number of optional ACIS chips dropped	0	0
Observation mode	POINTING	POINTING	On-chip summing requested	N	N
[deg] Pointing RA	219.137154	219.1040761826347	Subarray requested	NONE	NONE
[deg] Pointing Dec	35.086381	35.0906242221494	Alternating exposures requested	N	N
[deg] Pointing Roll	140.782516	141.0102431356139	[s] Primary exposure time	0.000000	3.1
[mm] SIM focus pos	-0.782348	-0.7809083437167272			
[mm] SIM defocus	0	0.001439871863259334			
[mm] SIM translation stage pos	-233.592463	-233.5874344608287			
[mm] SIM translation stage offset	0	-0.005018542100998502			
[s] Observation start time (MET)	165837715.184000	165837339.14378			
Observation start date	2003-04-04T10:00:51	2003-04-04T09:55:39			
[s] Observation end time (MET)	165842715.184000	165842849.54402			
Observation end date	2003-04-04T11:24:11	2003-04-04T11:27:29			
Read mode	TIMED	TIMED			

2.3 Aspect



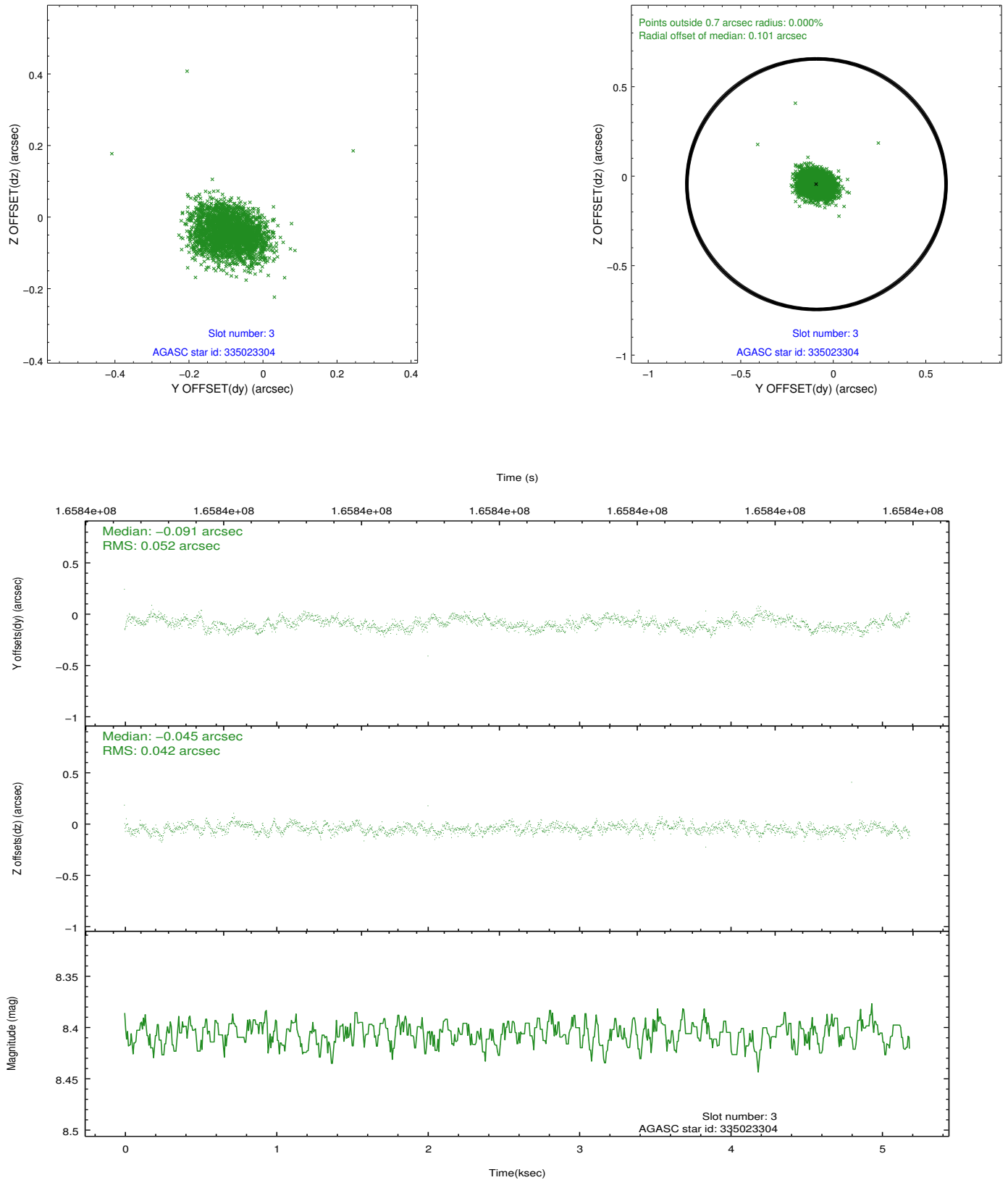


Slot Statistics

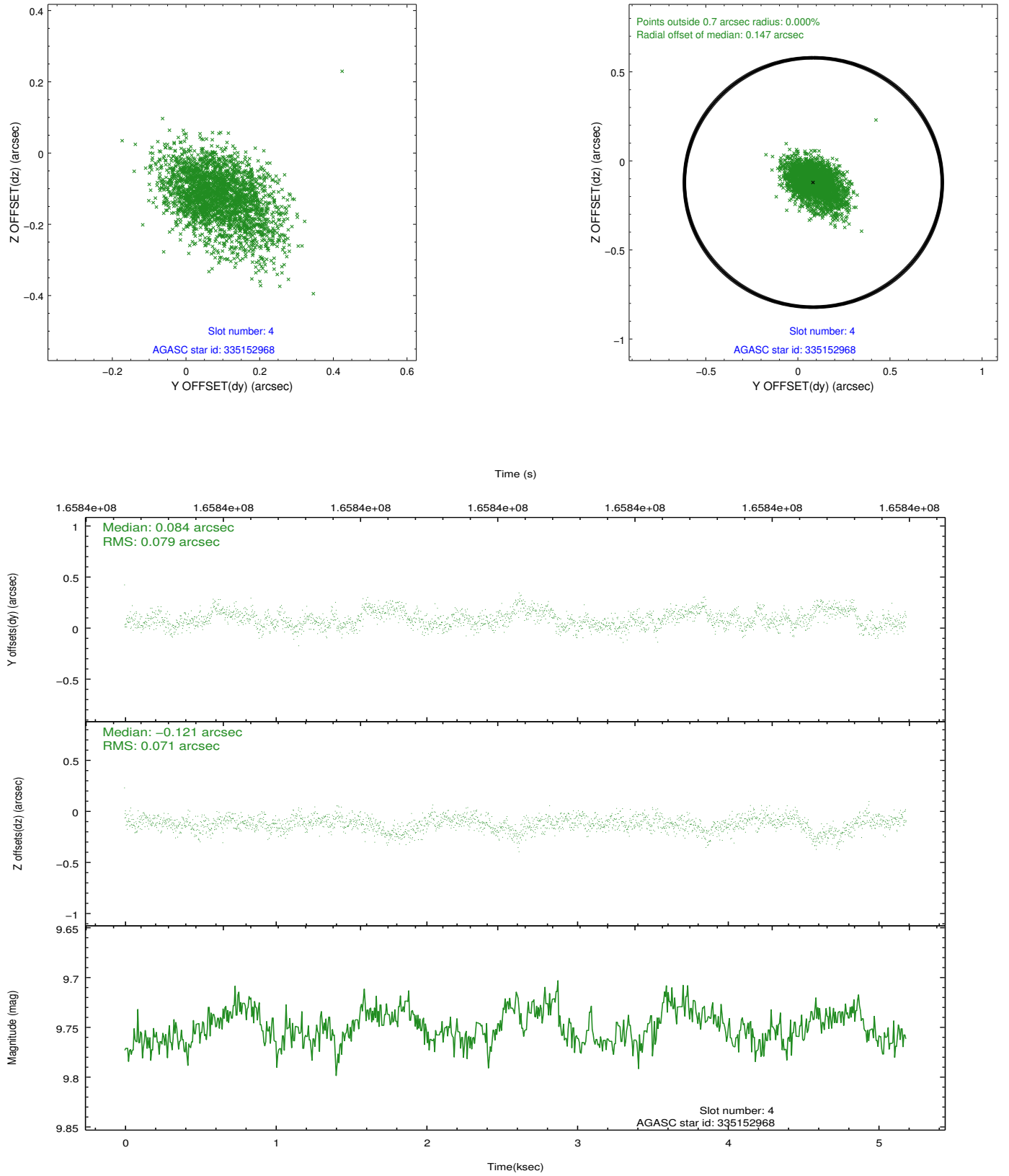
slot	status	id	mag	n_pts	med_dy	med_dz	dr1	dr2	ra	dec	mean_y	mean_z
0	FID	ACIS-I-1	7.25	1266	0.011	-0.005	0.006	0.011	0.000000	0.000000	937.62	-829.99
1	FID	ACIS-I-5	7.24	1266	-0.077	0.052	0.006	0.010	0.000000	0.000000	-1809.89	1067.03
2	FID	ACIS-I-6	7.26	1266	-0.026	0.024	0.006	0.011	0.000000	0.000000	401.92	1712.79
3	GUIDE	335023304	8.41	2530	-0.091	-0.045	0.071	0.110	218.883608	34.686545	-328.28	1589.34
4	GUIDE	335152968	9.75	2529	0.084	-0.121	0.111	0.189	219.446087	34.867883	-1203.57	32.23
5	GUIDE	335414336	8.95	2530	-0.064	-0.055	0.065	0.109	218.979022	35.090910	370.86	282.02
6	GUIDE	335545712	9.88	2528	-0.058	0.148	0.114	0.188	220.165930	35.199137	-2077.84	-2239.70
7	GUIDE	335546608	10.04	2529	0.120	0.068	0.143	0.240	219.906522	35.245587	-1385.05	-1881.57

2.4 Star Slots

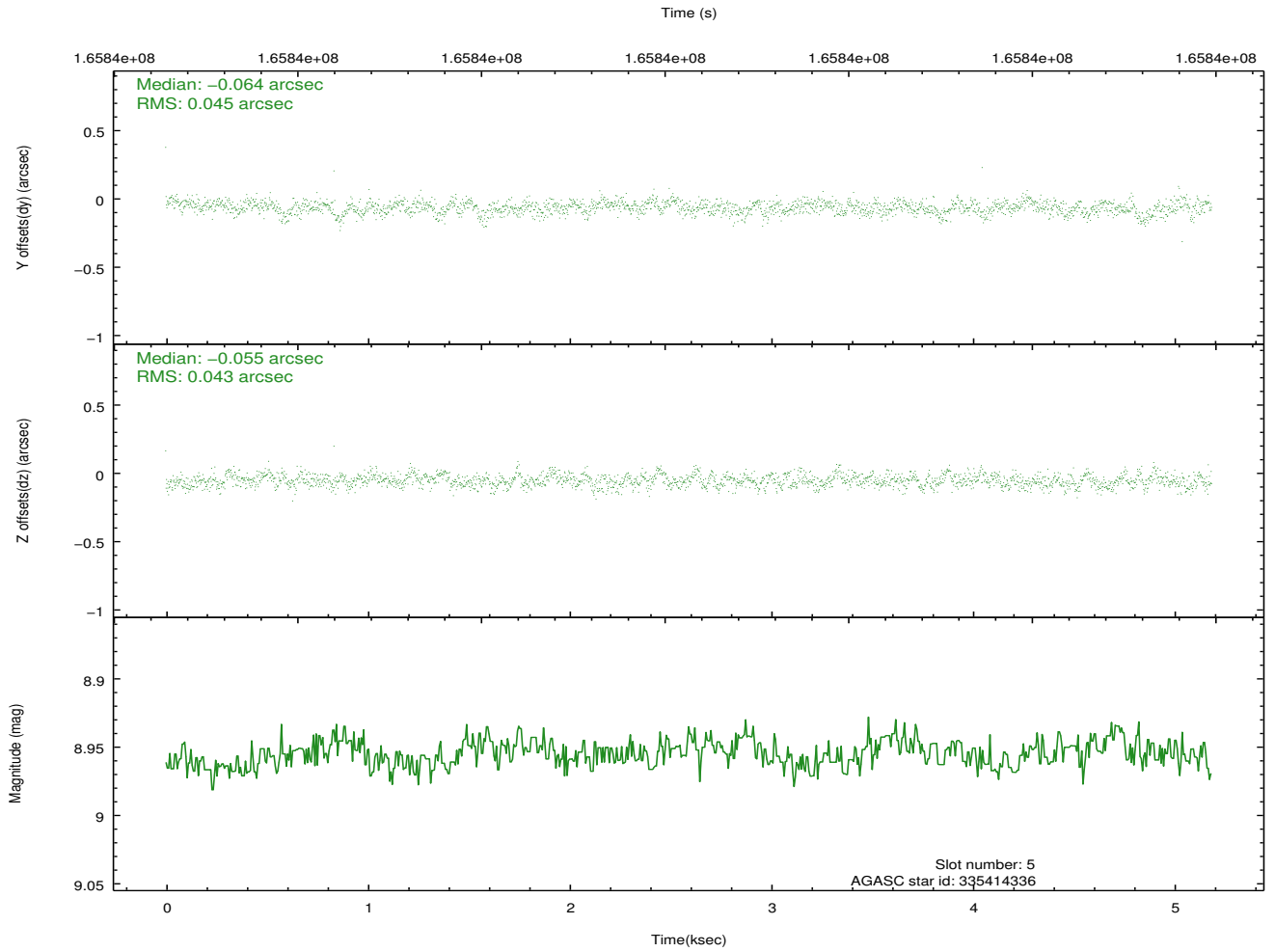
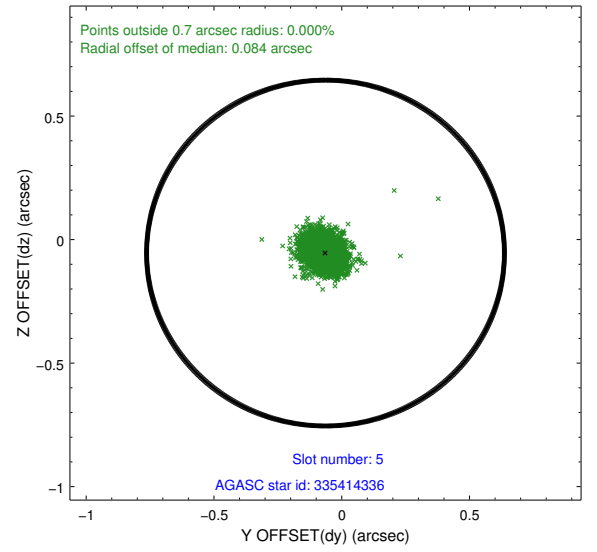
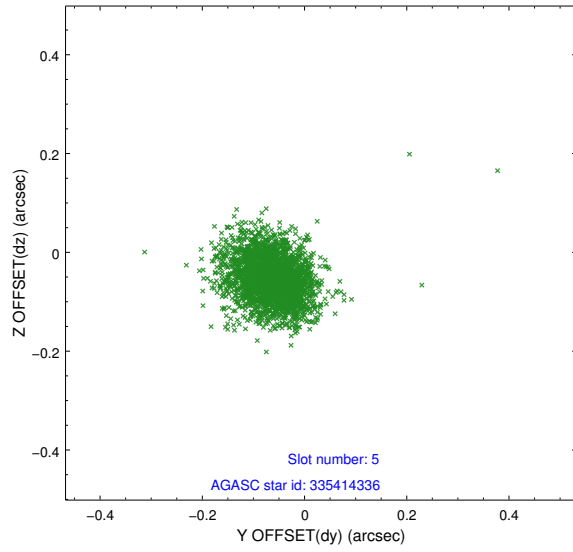
2.4.1 Slot 3



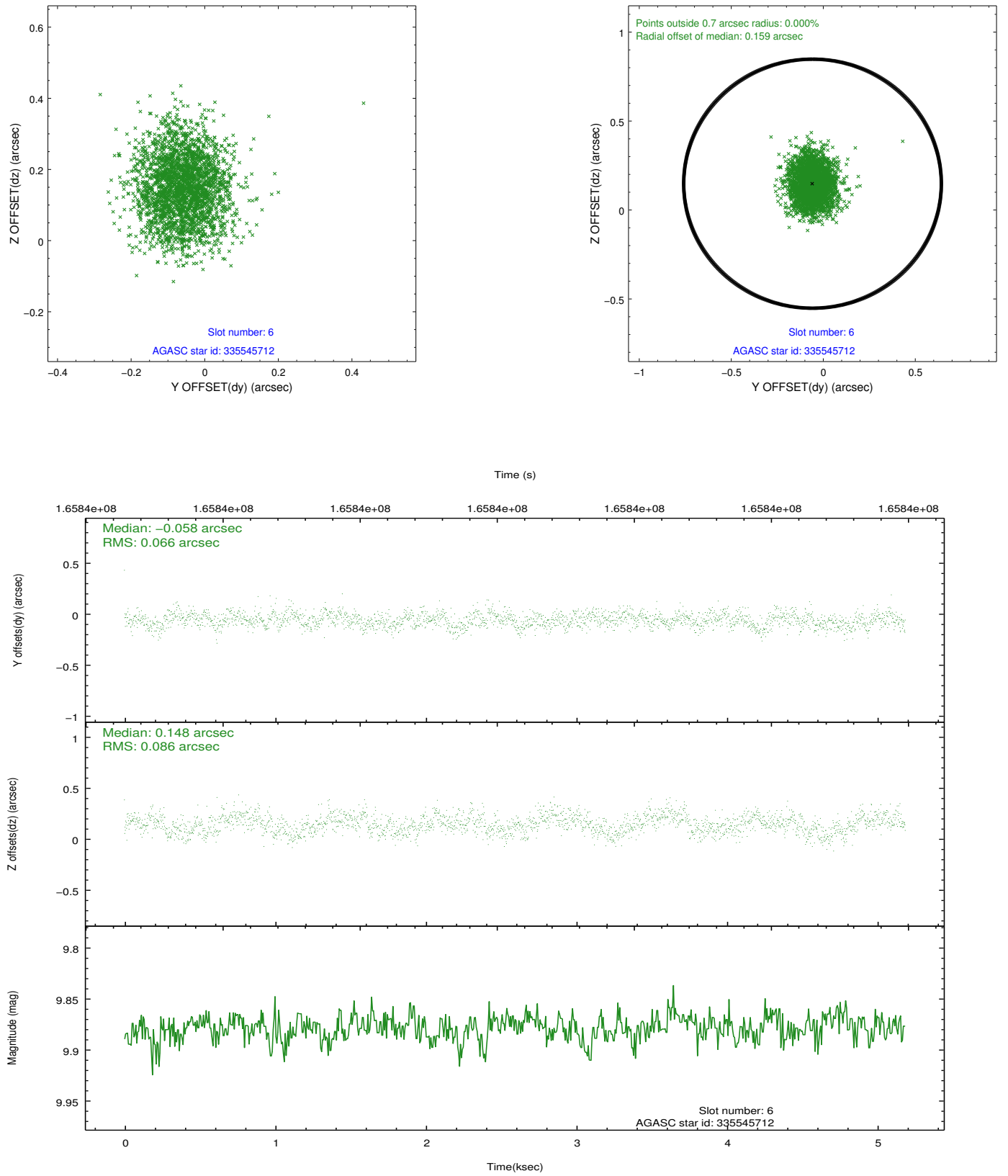
2.4.2 Slot 4



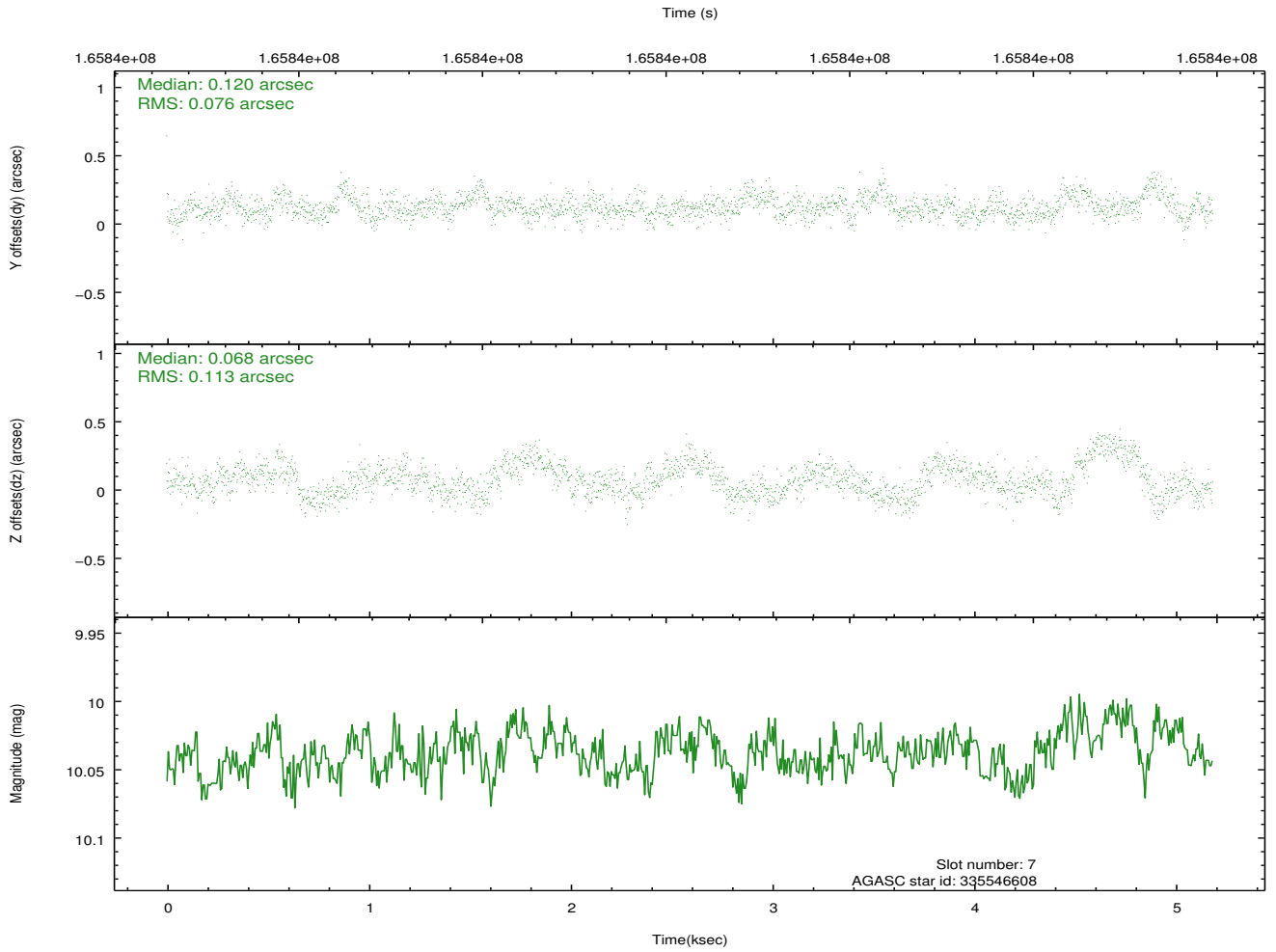
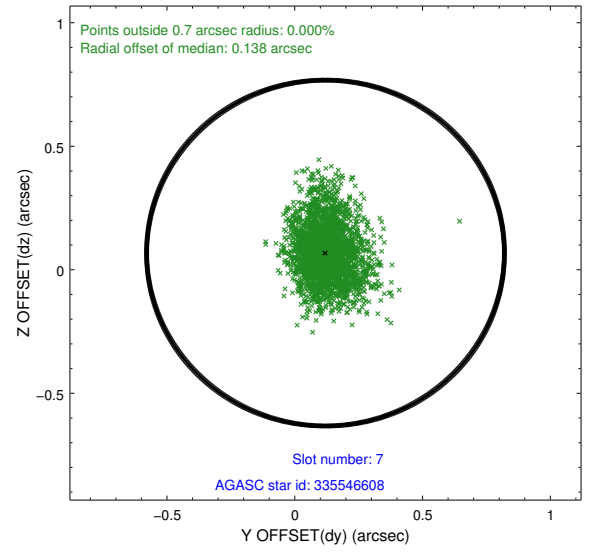
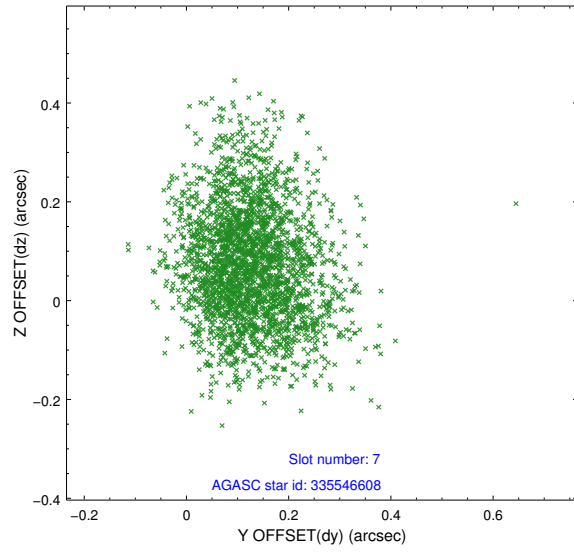
2.4.3 Slot 5



2.4.4 Slot 6

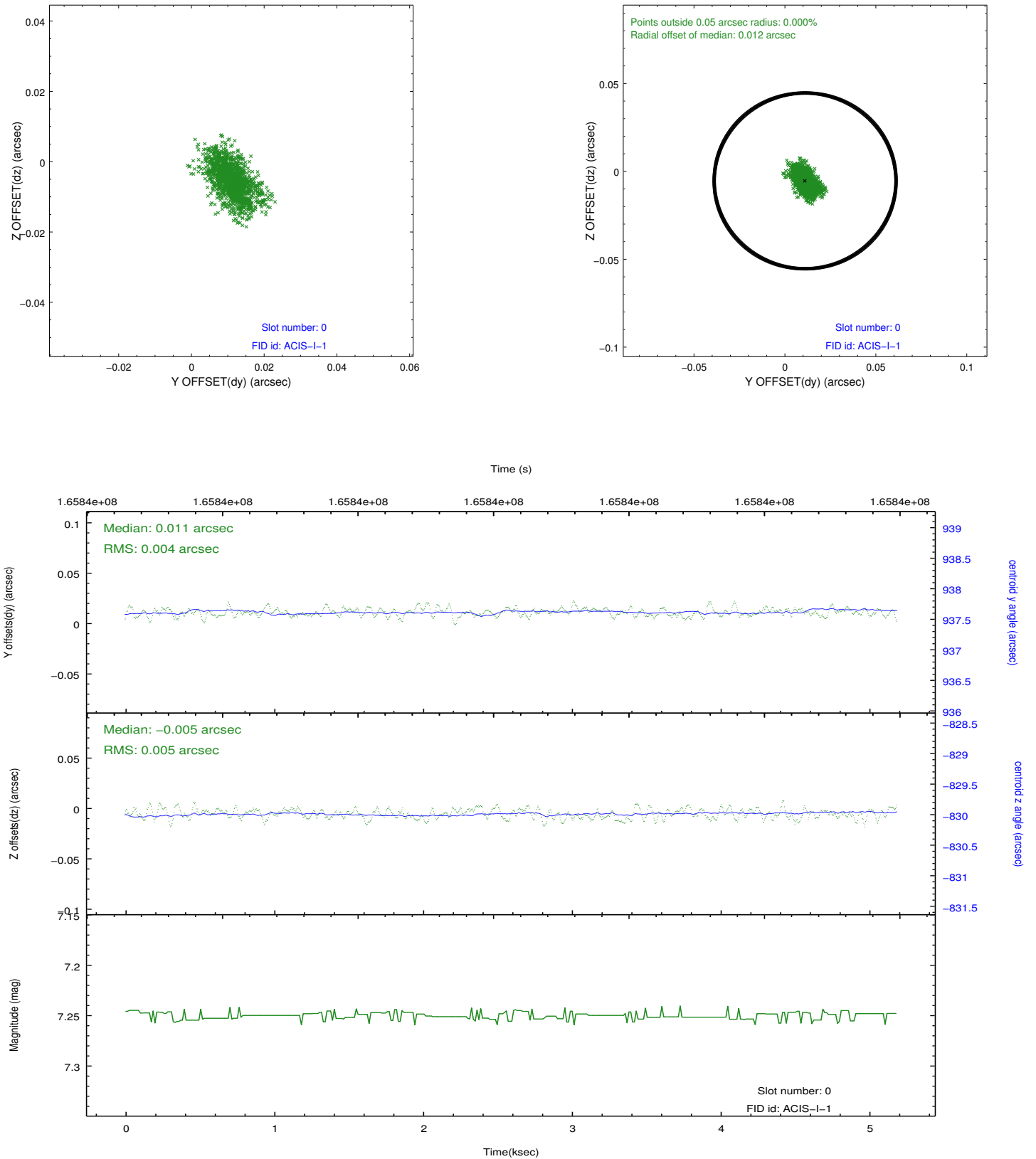


2.4.5 Slot 7

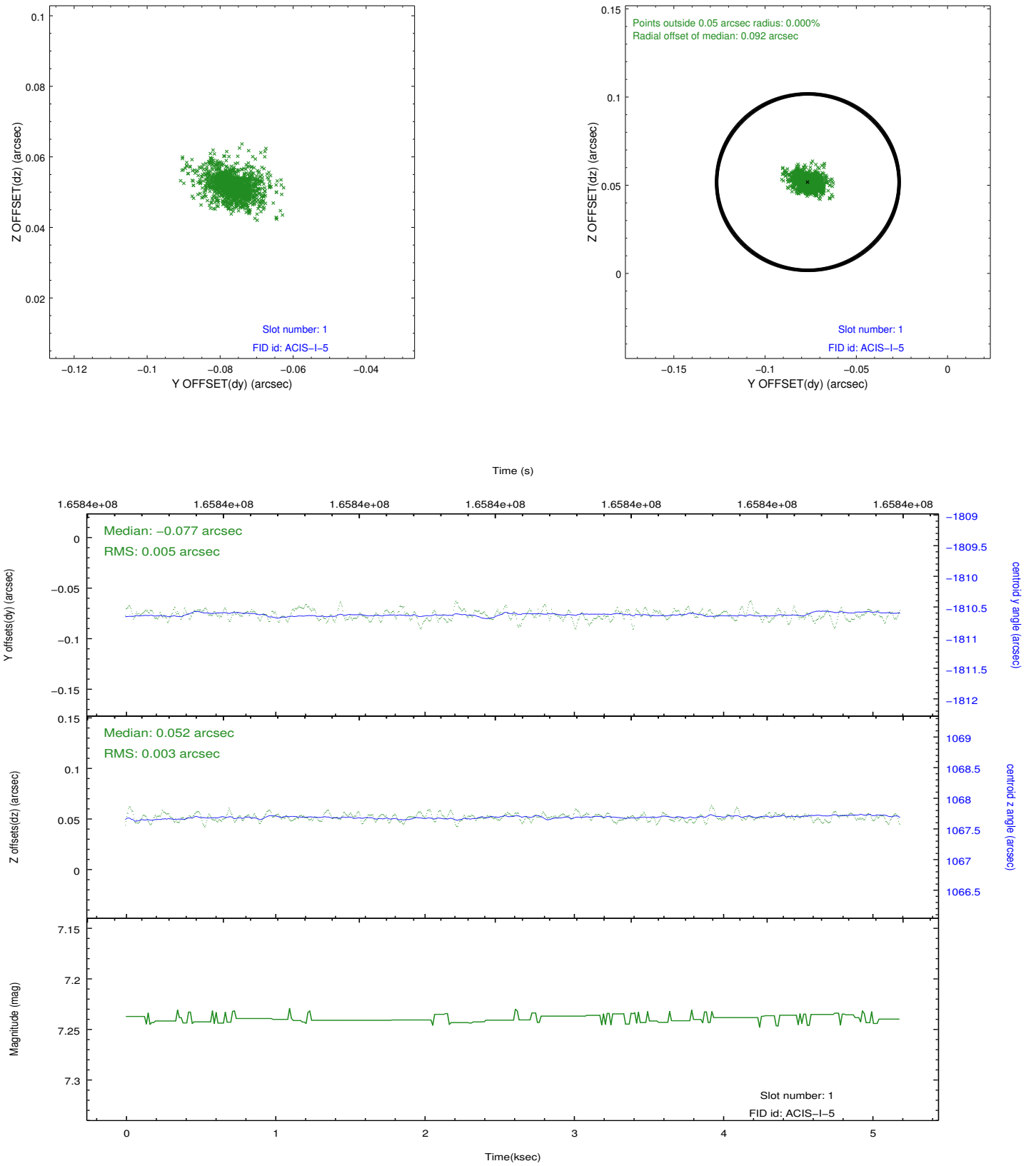


2.5 FID Slots

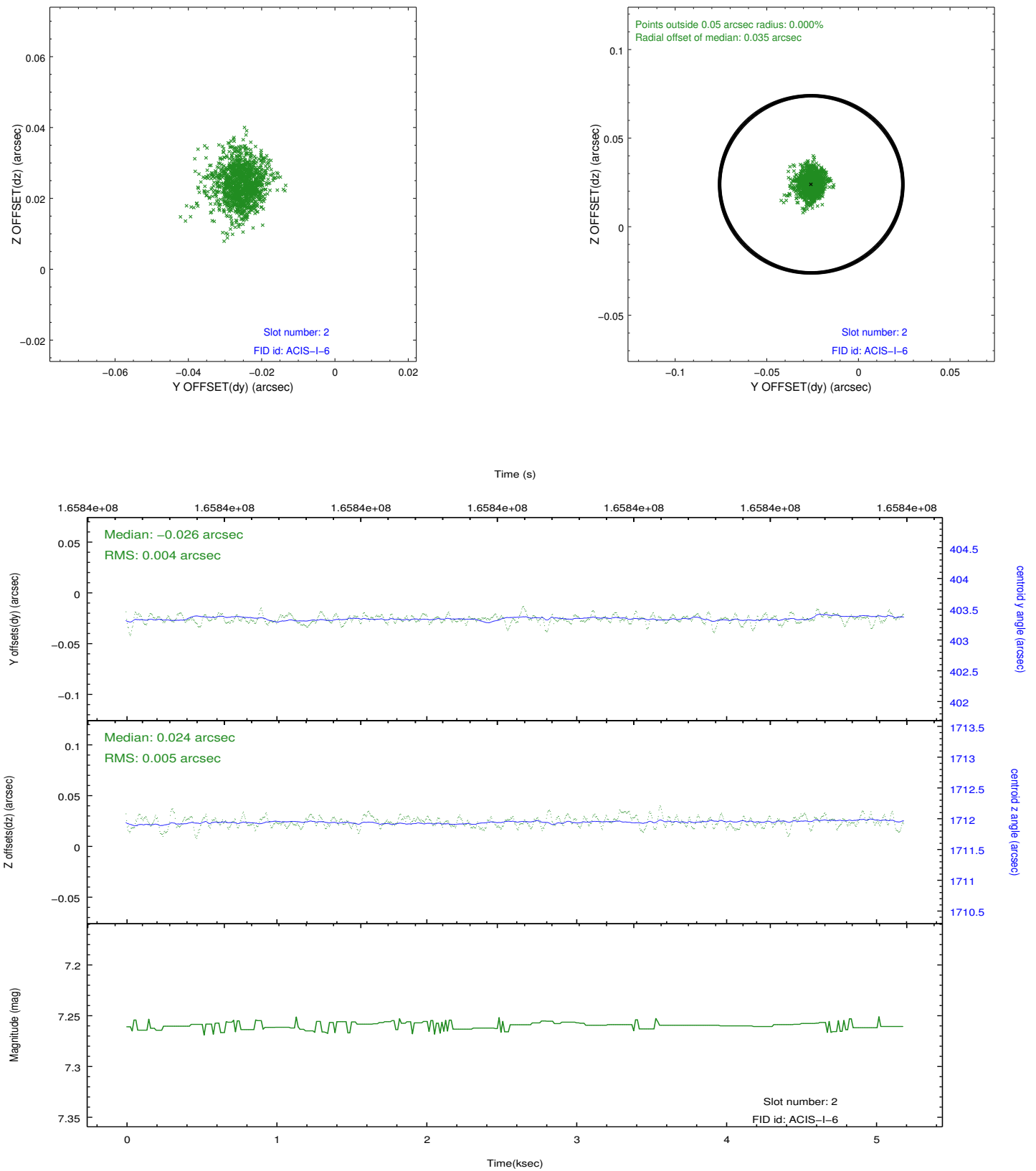
2.5.1 Slot 0



2.5.2 Slot 1



2.5.3 Slot 2



A Summary

A.1 Status

V&V Scientist	Jen Lauer
V&V Date (YYYY-MM-DD)	2012.11.13
V&V Edition	1
V&V Disposition and Status	OK
V&V Charge Time	4.777

A.2 Comments