

V&V Reference Report

L2 ASCDS Version : 7.6.8

Observation 3625 - L2 Version 001
Chandra X-Ray Center

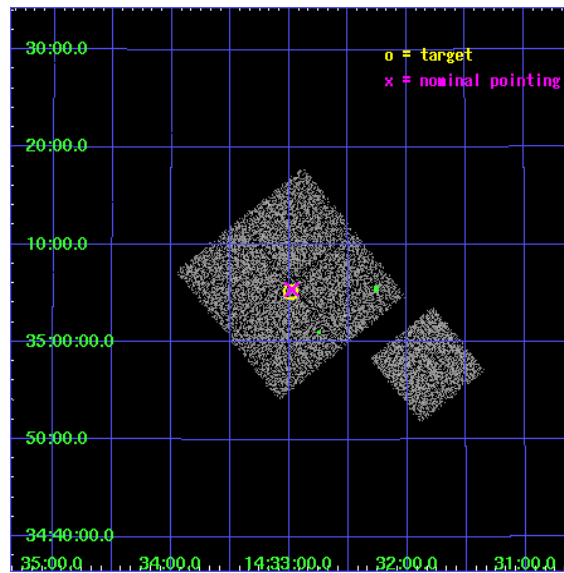
L2 Processing Date : Jul 29 2006

Contents

1	Front	2
2	OBI	3
2.1	OBI	3
2.1.1	Images	3
2.1.2	Bias	3
2.1.3	Parameters	4
2.1.4	Events	4
2.2	Compared Parameters	5
2.3	Aspect	6
2.4	Star Slots	9
2.4.1	Slot 3	9
2.4.2	Slot 4	10
2.4.3	Slot 5	11
2.4.4	Slot 6	12
2.4.5	Slot 7	13
2.5	FID Slots	14
2.5.1	Slot 0	14
2.5.2	Slot 1	15
2.5.3	Slot 2	16
3	Point Sources	17
A	Summary	18
A.1	Status	18
A.2	Comments	18

1 Front

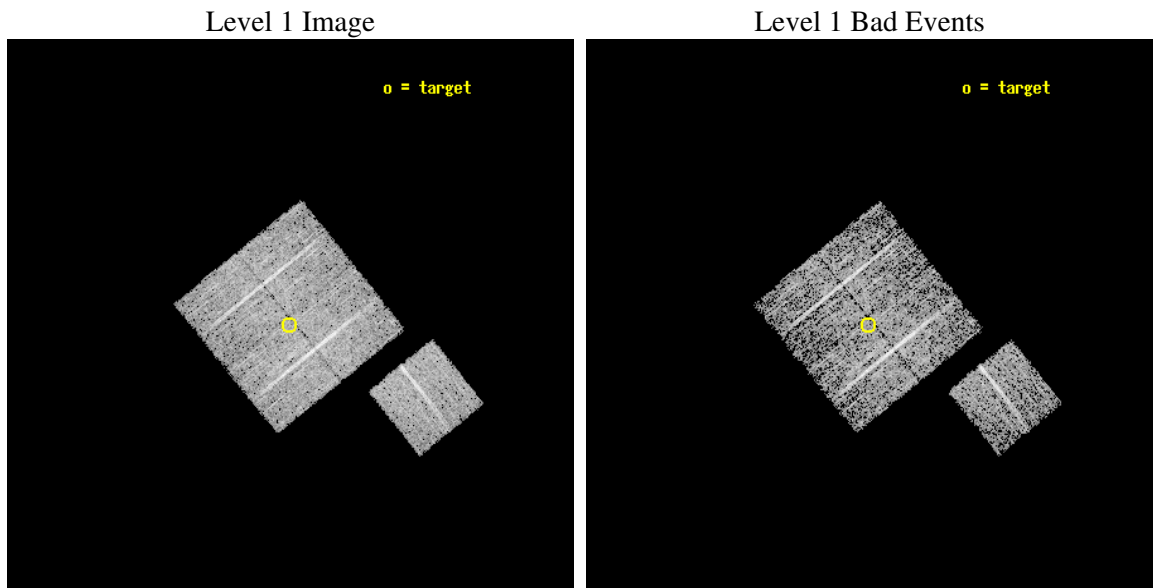
seq_num	900225
obs_id	3625
title	CHANDRA LARGE SCALE SURVEY OF THE NOAO BOOTES DEEP FIELD
observer	Dr. Stephen Murray
object	NOAO FIELD F6
dtcycle	0
cycle	P
ra_targ	218.246914
dec_targ	35.08647
ra_nom	218.24412865401
dec_nom	35.090513266826
roll_nom	141.0102796942
revision	2
ontime	4742.9589907229
livetime	4680.9887397935
ontime0	4746.0999908745
ontime1	4746.0999908745
ontime2	4742.959010601
ontime3	4742.9589907229
ontime6	4746.0999908745
l2events	18655



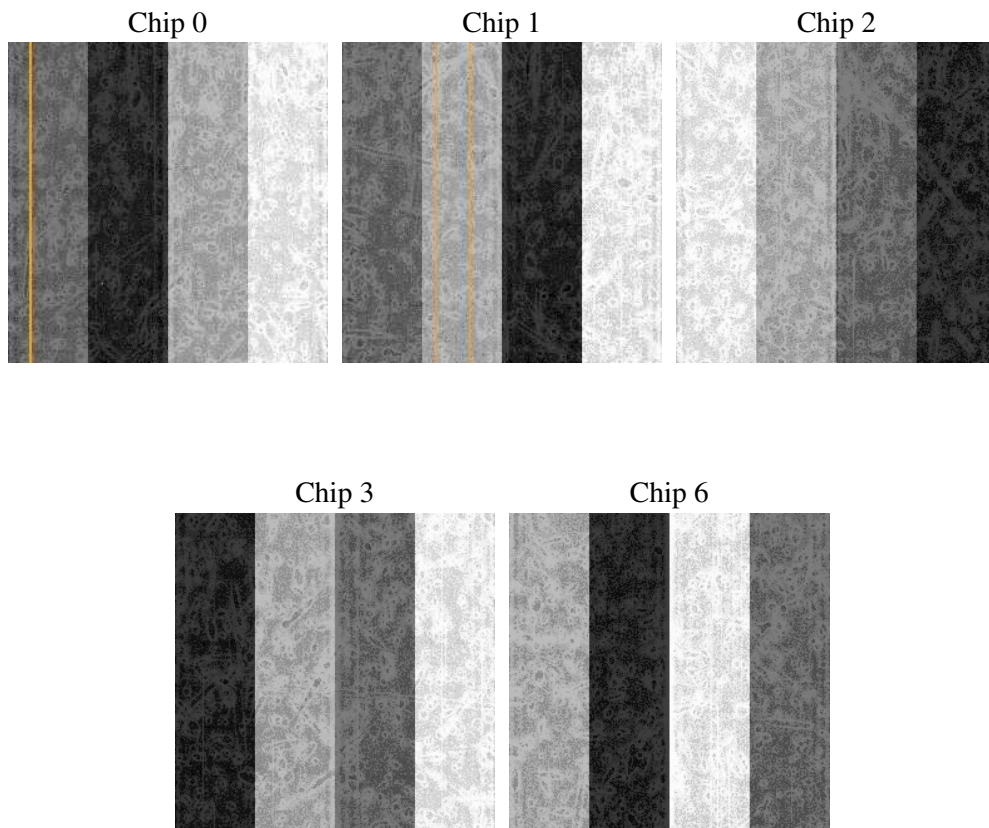
2 OBI

2.1 OBI

2.1.1 Images



2.1.2 Bias



2.1.3 Parameters

obi_num	1
ascdsver	7.6.8
caldsver	3.2.2
date	2006-07-29T22:59:27
revision	2

sched_exp_time	4967.084000
ontime	4746.0645701587
ontime0	4749.2055902481
ontime1	4749.2055703104
ontime2	4746.0646099746
ontime3	4746.0645701587
ontime6	4749.2055703104
l1events	128144

2.1.4 Events

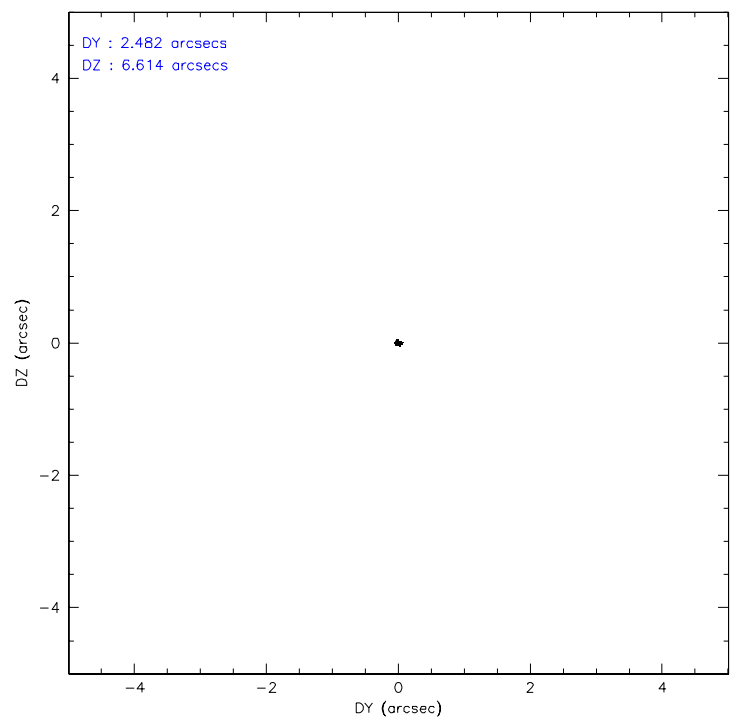
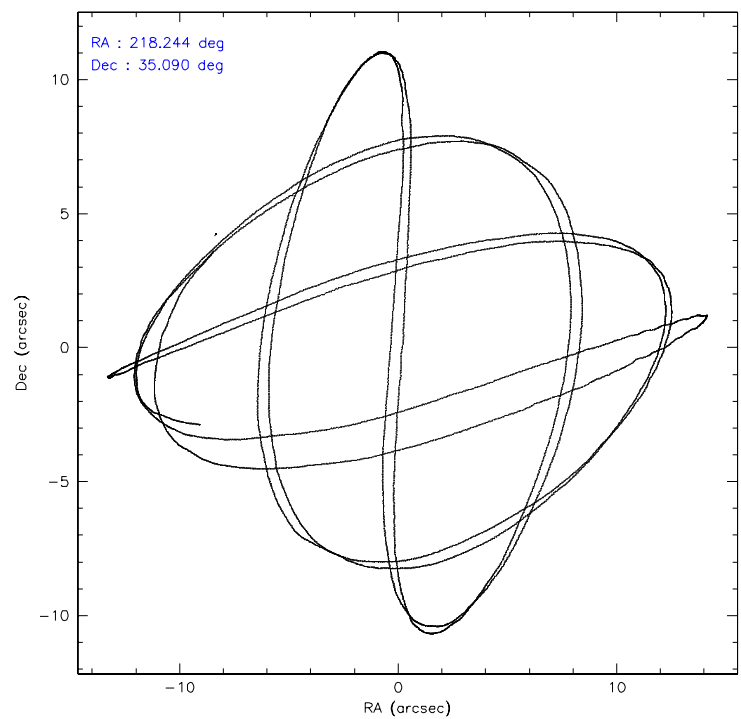
	ccd 0	ccd 1	ccd 2	ccd 3	ccd 6
level 1 events	25207	23767	26359	26916	25895
rejected events	20909	19567	22283	22923	21208
rejected %	82%	82%	84%	85%	81%

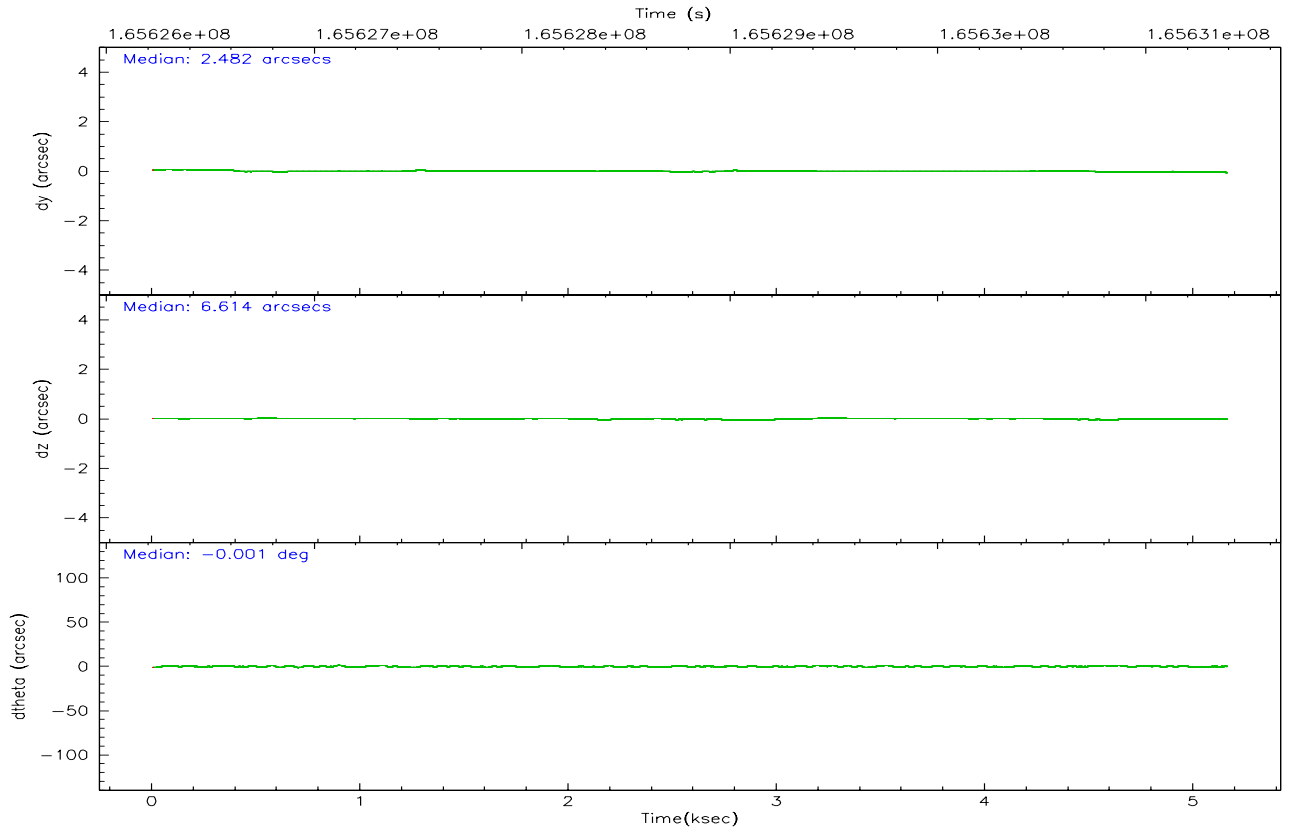
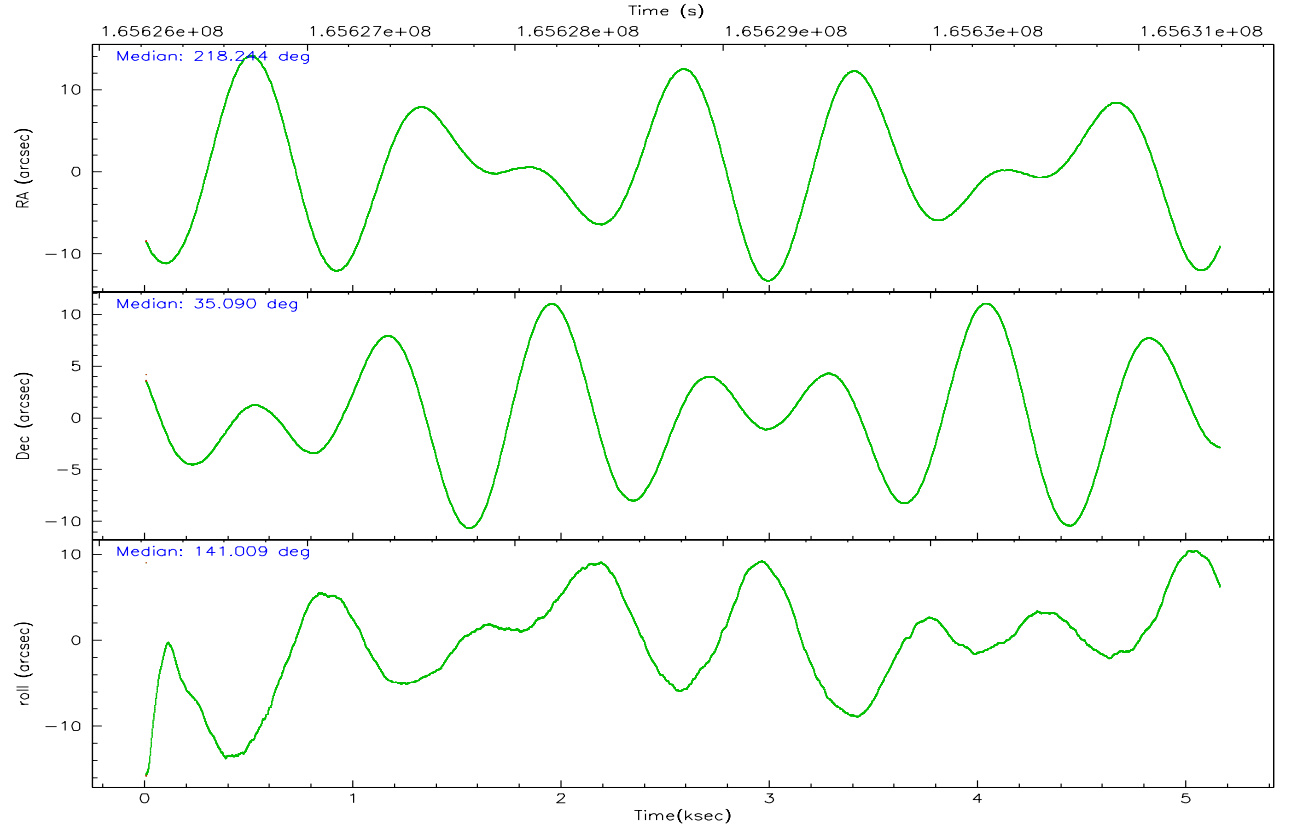
	ccd 0	ccd 1	ccd 2	ccd 3	ccd 6
grade 0 events	1962	1846	1930	1890	2351
	7%	7%	7%	7%	9%
grade 1 events	16	12	16	14	16
	0%	0%	0%	0%	0%
grade 2 events	833	806	766	684	745
	3%	3%	2%	2%	2%
grade 3 events	388	400	343	367	431
	1%	1%	1%	1%	1%
grade 4 events	349	348	354	370	347
	1%	1%	1%	1%	1%
grade 5 events	660	739	617	786	762
	2%	3%	2%	2%	2%
grade 6 events	770	802	686	686	817
	3%	3%	2%	2%	3%
grade 7 events	20229	18814	21647	22119	20426
	80%	79%	82%	82%	78%

2.2 Compared Parameters

Parameter	Planned	Actual	Parameter	Planned	Actual
Instrument	ACIS	ACIS	Obspar format version number	6	6
Detector	ACIS-01236	ACIS-01236	Obspar file type	PREDICTED	ACTUAL
Grating	NONE	NONE	Obspar update status	NONE	UPDATED
Data mode	VFAINT	VFAINT	On-chip summing requested	N	N
Observation mode	POINTING	POINTING	Subarray requested	NONE	NONE
Pointing RA	218.277324	218.2441286540075	Alternating exposures requested	N	N
Pointing Dec	35.086393	35.09051326682603	Primary exposure time	0.000000	3.1
Pointing Roll	140.782521	141.0102796942016			
SIM focus pos (mm)	-0.782348	-0.7809083437167272			
SIM defocus (mm)	0	0.001439871863259334			
SIM translation stage pos (mm)	-233.592463	-233.5874344608287			
SIM translation stage offset (mm)	0	-0.005018542100998502			
Observation start time	165626423.184000	165626046.65987			
Observation start date	2003-04-01T23:19:19	2003-04-01T23:14:06			
Observation end time	165631390.184000	165631704.14761			
Observation end date	2003-04-02T00:42:06	2003-04-02T00:48:24			
Read mode	TIMED	TIMED			

2.3 Aspect



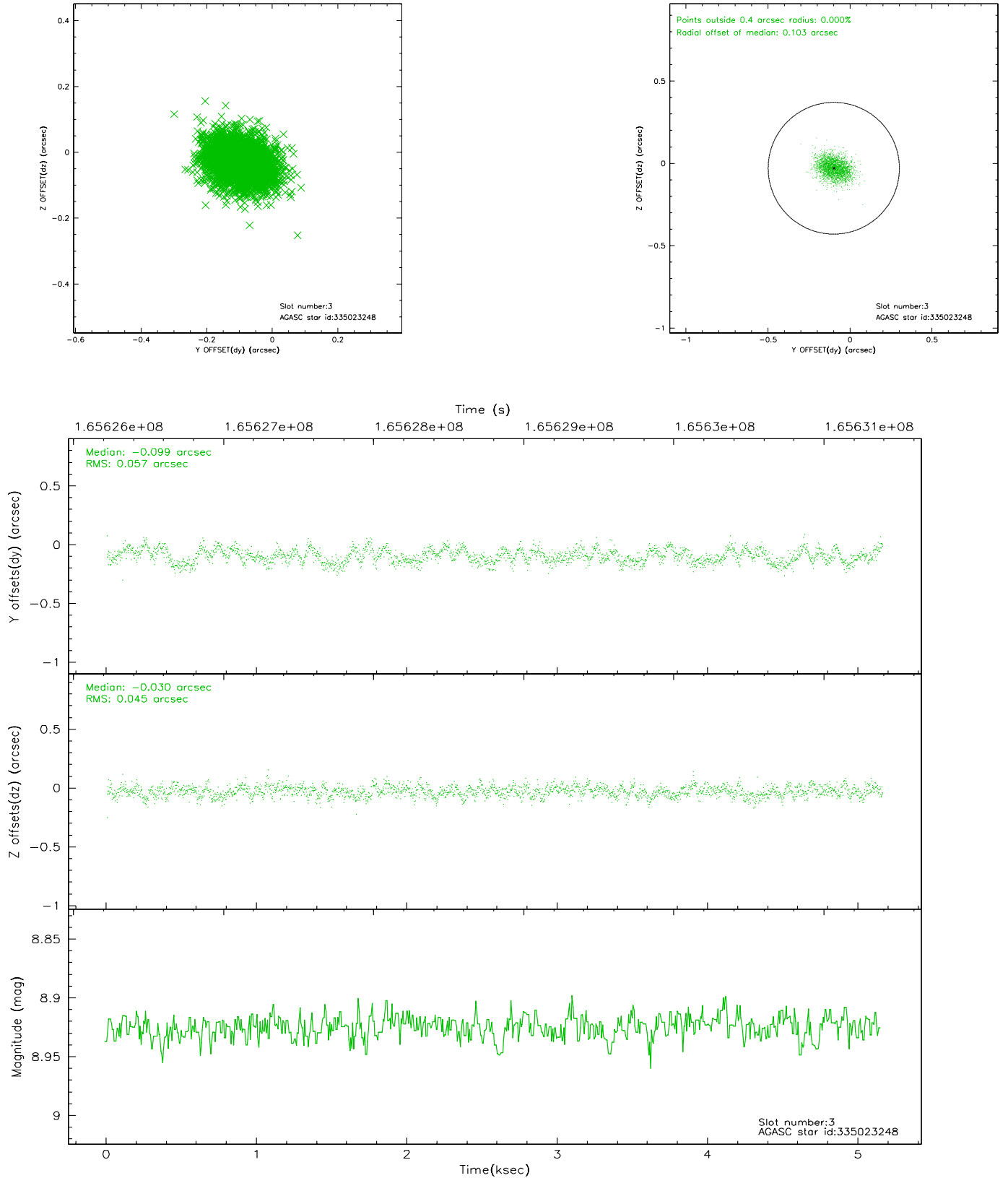


Slot Statistics

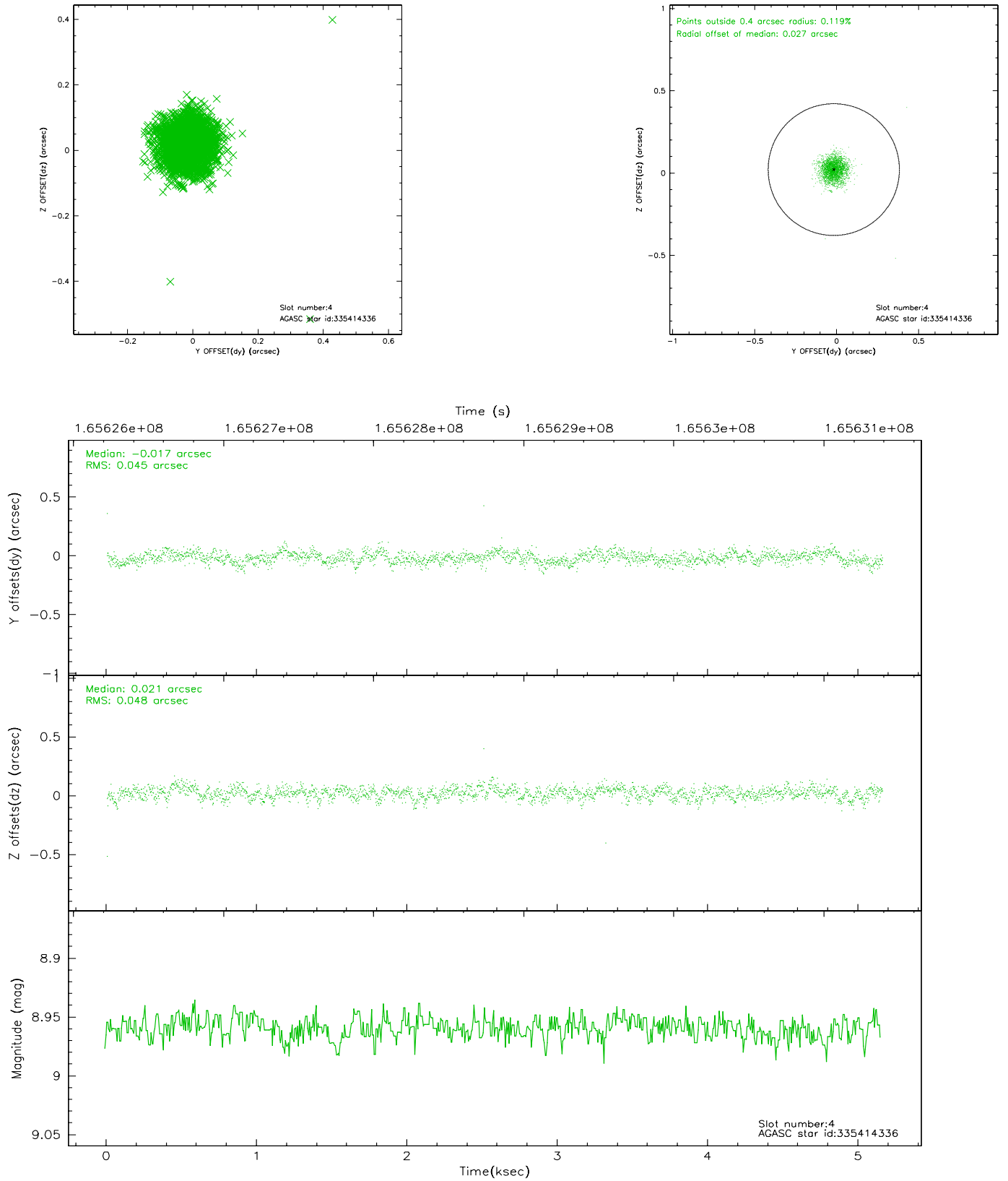
slot	status	id	mag	n_pts	med_dy	med_dz	dr1	dr2	ra	dec	mean_y	mean_z
0	FID	ACIS-I-1	7.25	1258	-0.006	0.020	0.006	0.010	0.000000	0.000000	937.30	-829.99
1	FID	ACIS-I-5	7.24	1258	-0.052	0.045	0.006	0.010	0.000000	0.000000	-1810.16	1066.99
2	FID	ACIS-I-6	7.26	1259	-0.033	0.005	0.006	0.010	0.000000	0.000000	401.60	1712.74
3	GUIDE	335023248	8.92	2512	-0.099	-0.030	0.078	0.123	217.634832	34.944512	1149.81	1589.53
4	GUIDE	335414336	8.96	2513	-0.017	0.021	0.067	0.108	218.979022	35.090910	-1585.93	-1324.72
5	GUIDE	335415168	9.80	2514	0.111	-0.148	0.106	0.177	217.681296	35.301767	1850.19	501.81
6	GUIDE	335417968	9.39	2516	0.028	0.072	0.104	0.171	217.358149	35.055285	2036.55	1789.90
7	GUIDE	335421696	8.97	2515	-0.019	0.087	0.092	0.139	218.045699	35.772449	2087.00	-1485.74

2.4 Star Slots

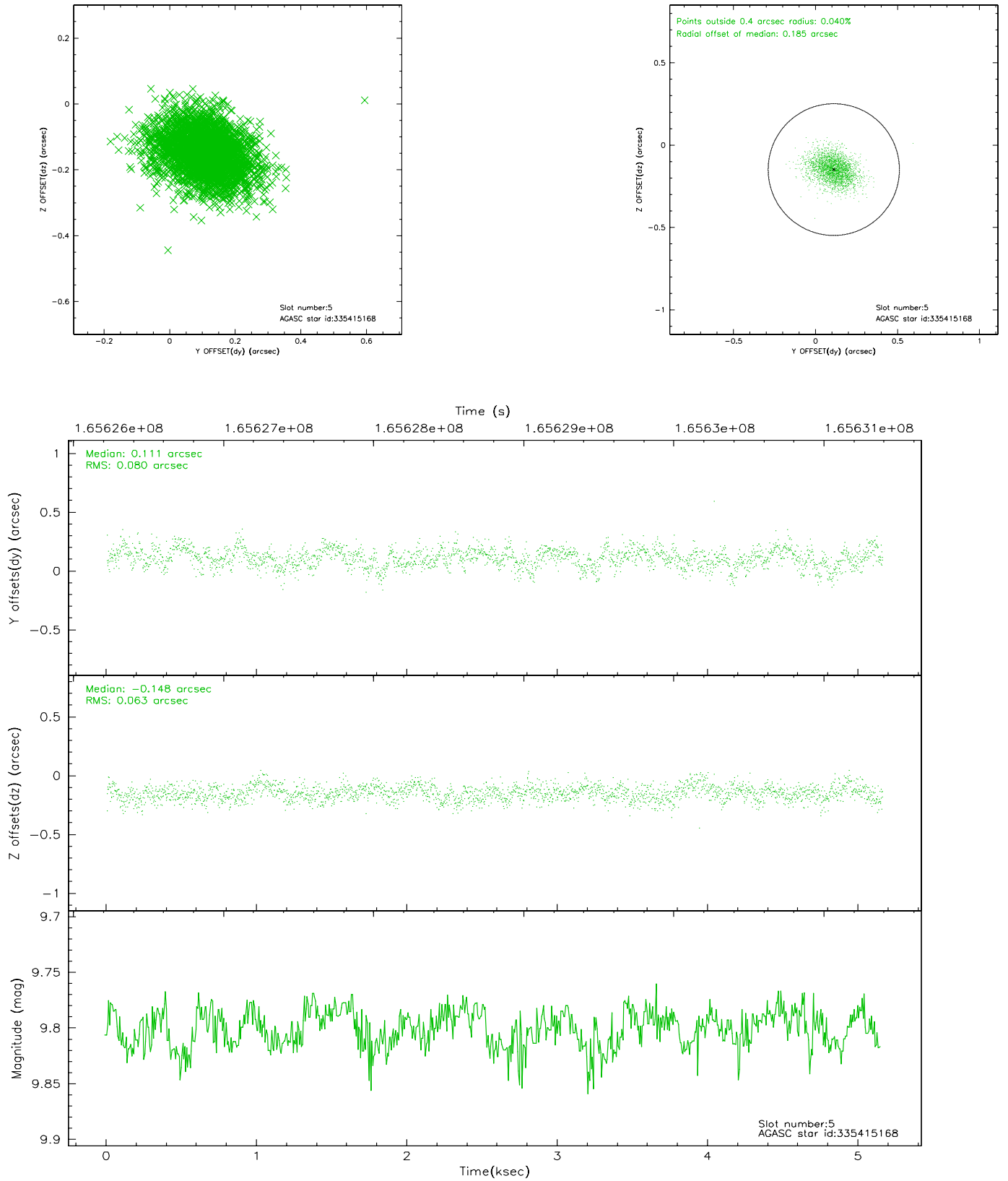
2.4.1 Slot 3



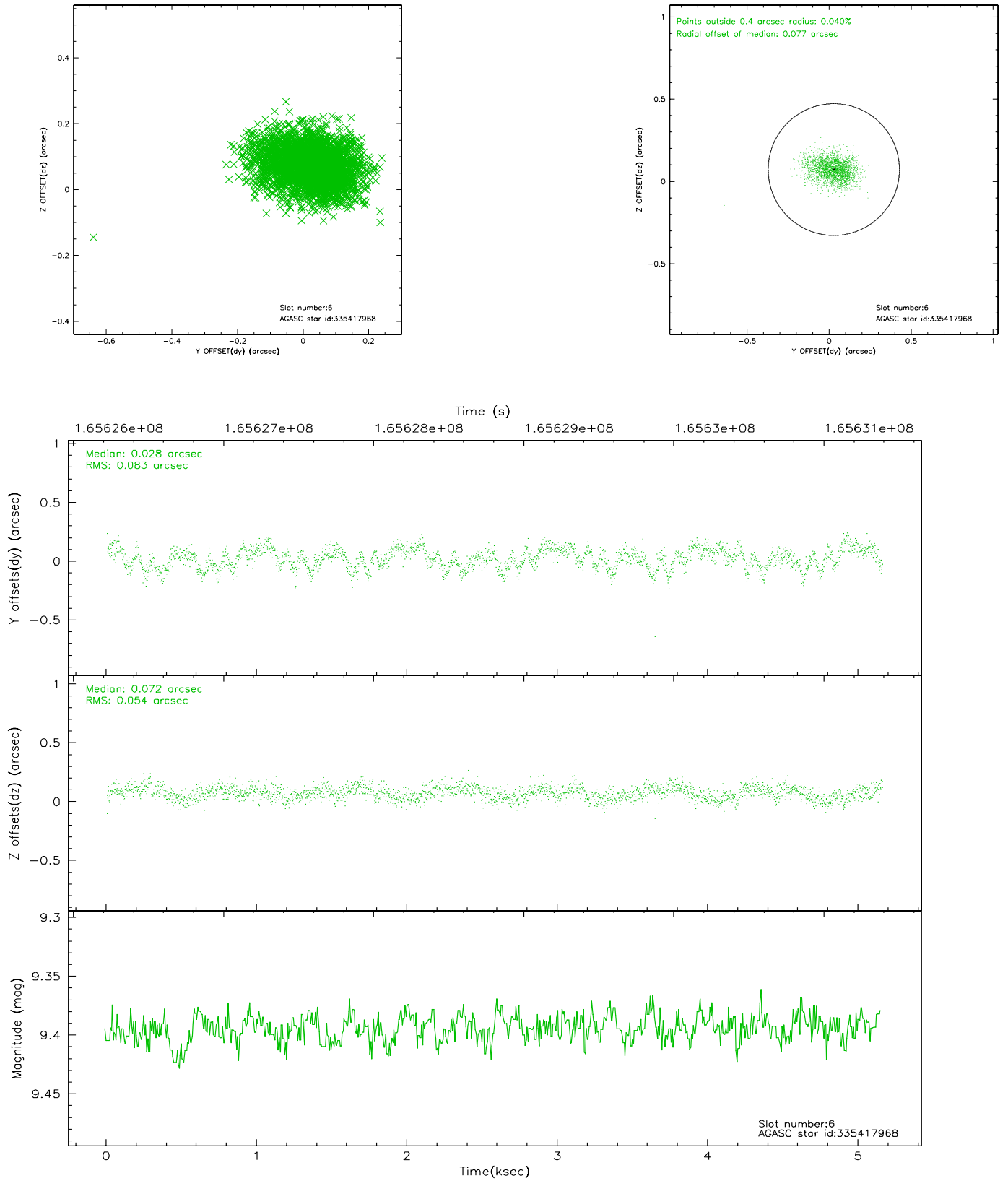
2.4.2 Slot 4



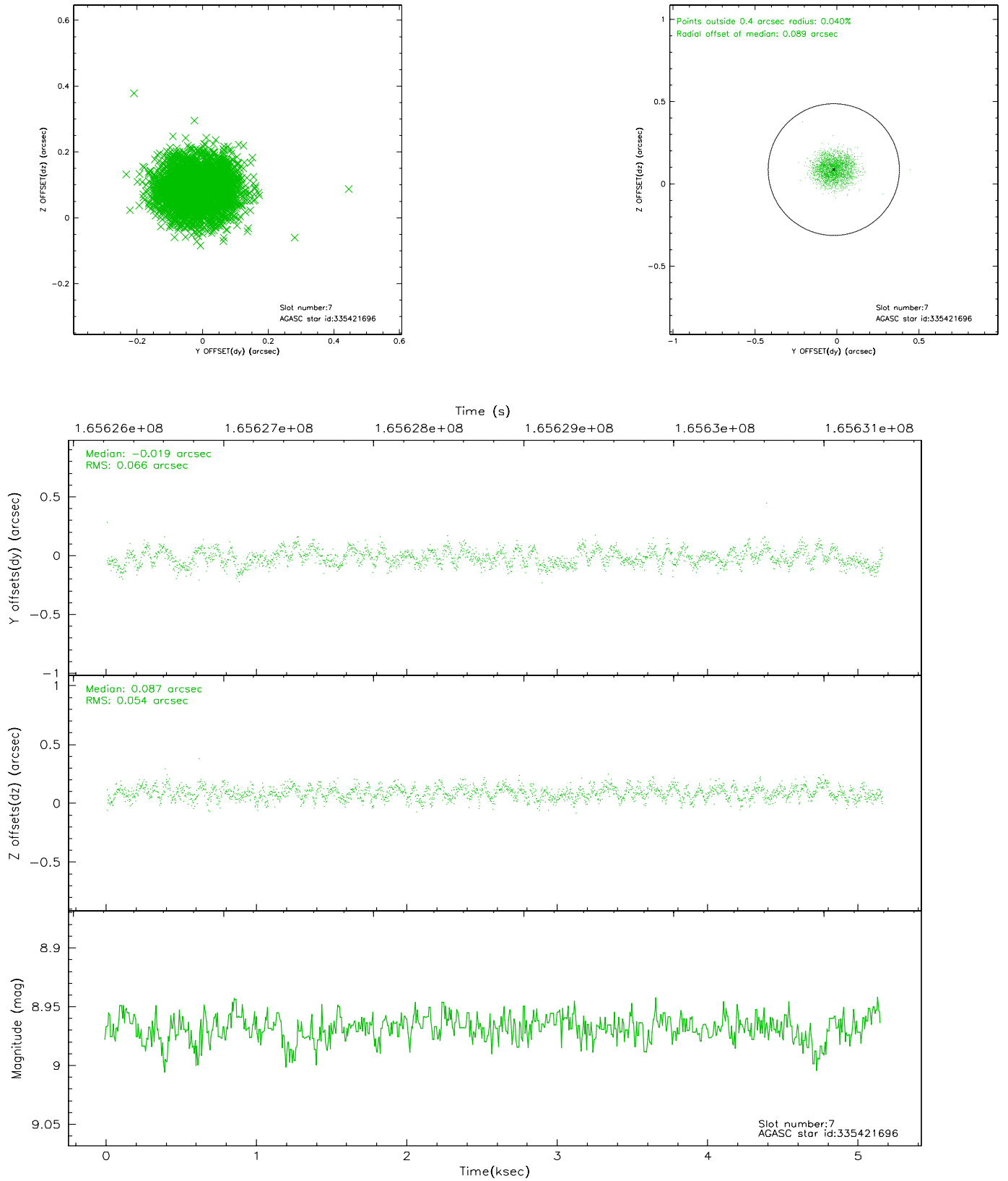
2.4.3 Slot 5



2.4.4 Slot 6

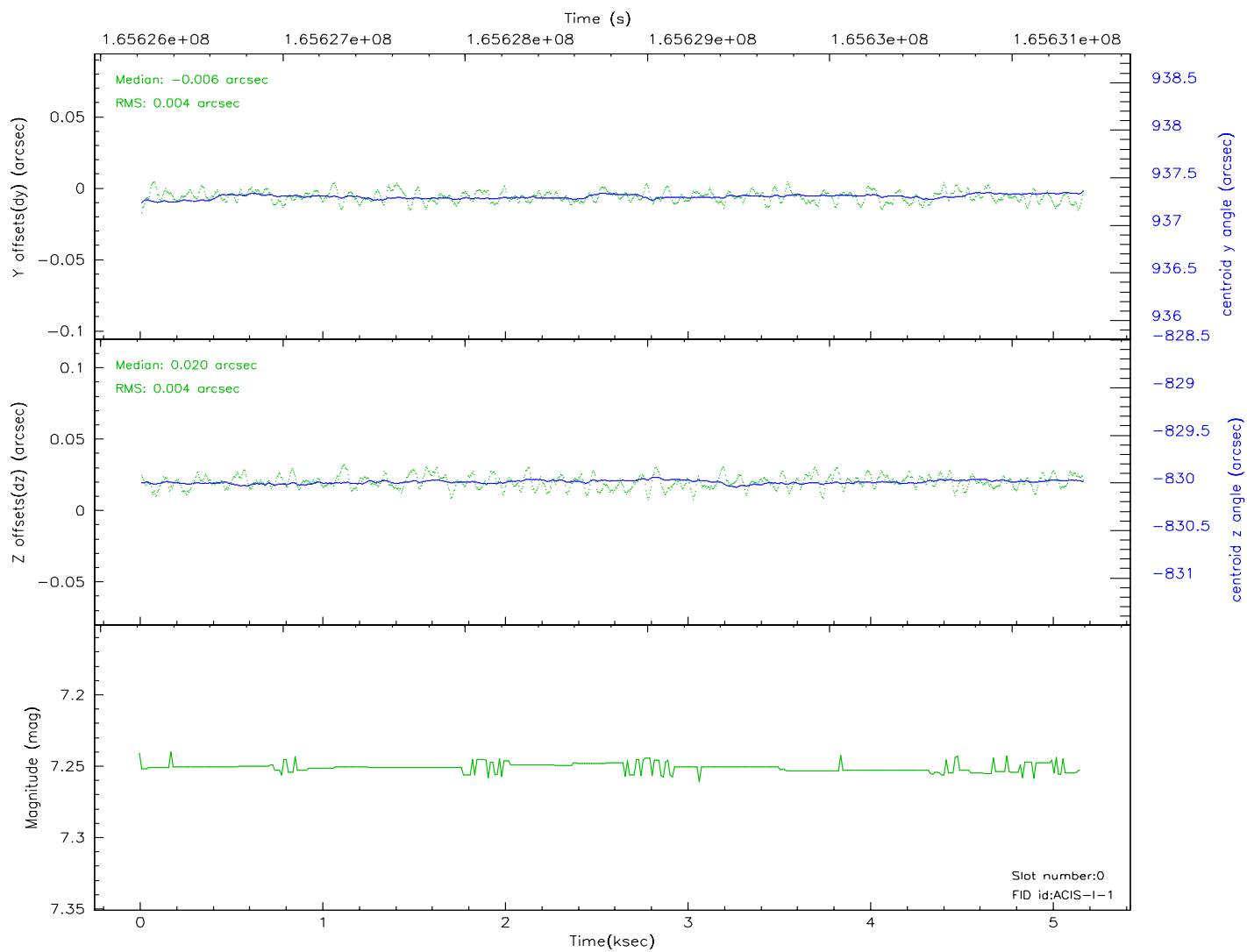
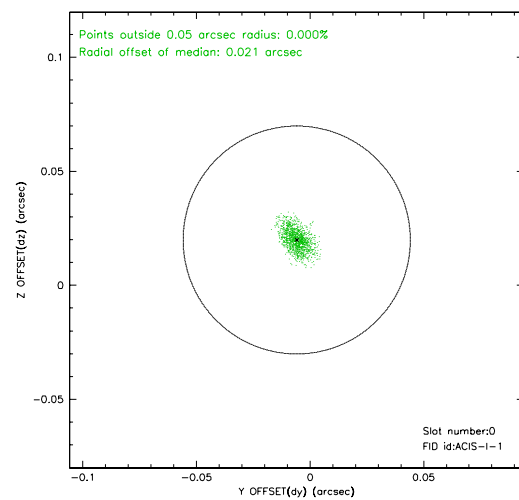
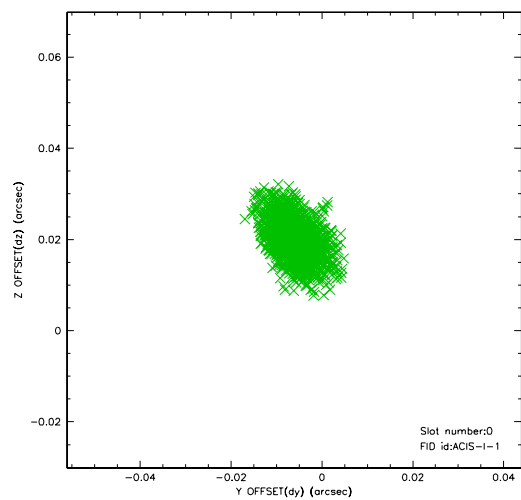


2.4.5 Slot 7

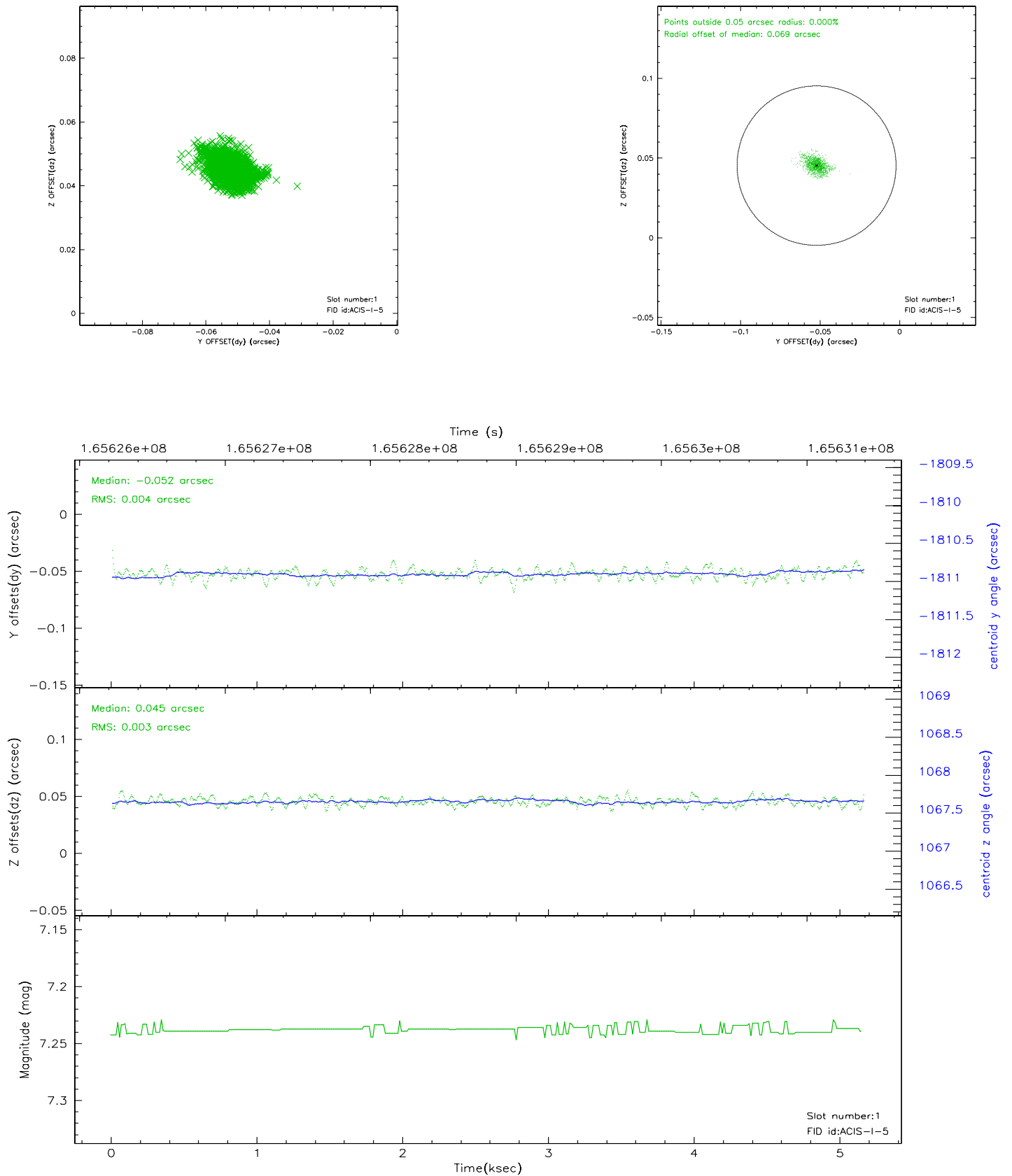


2.5 FID Slots

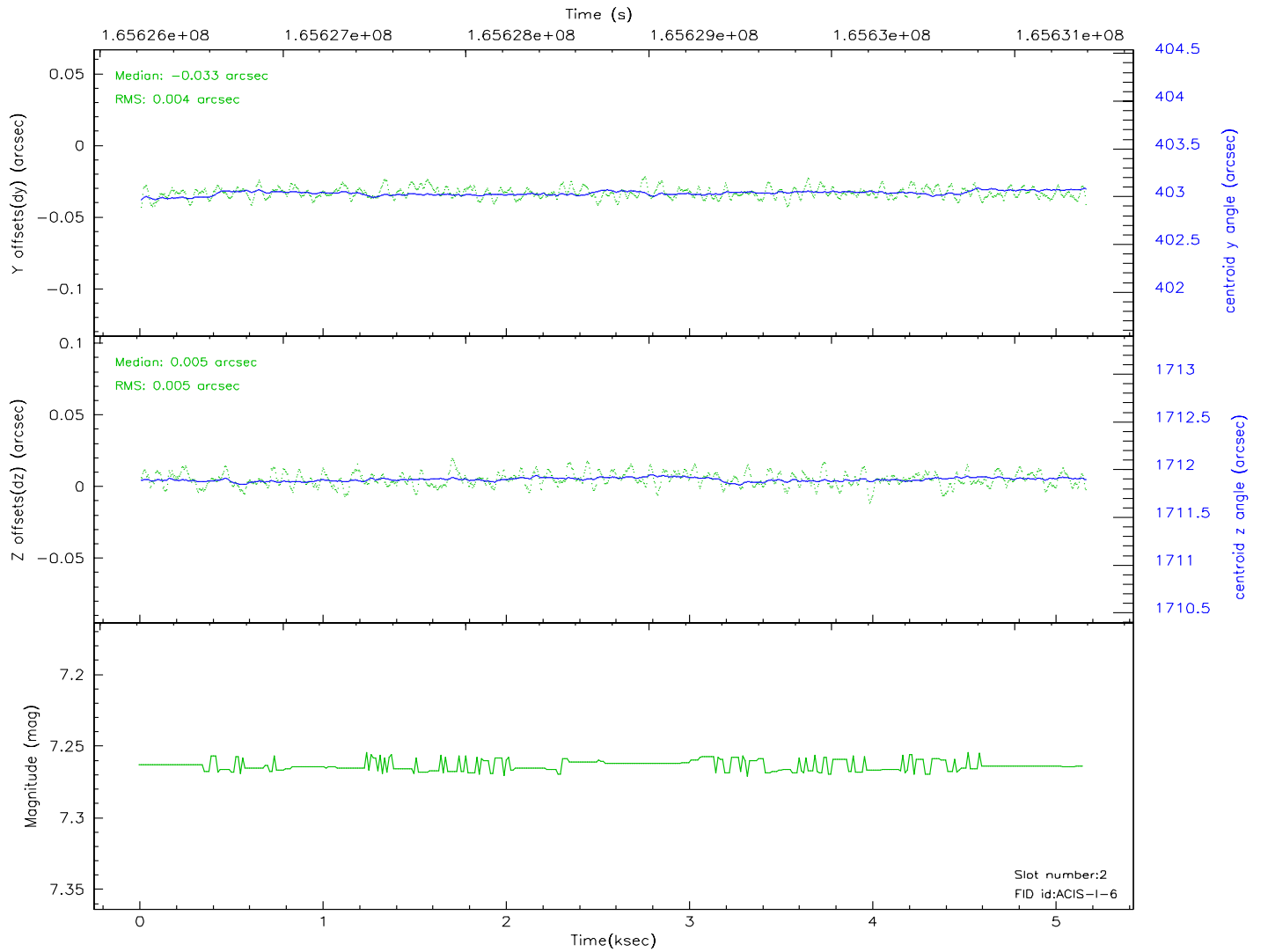
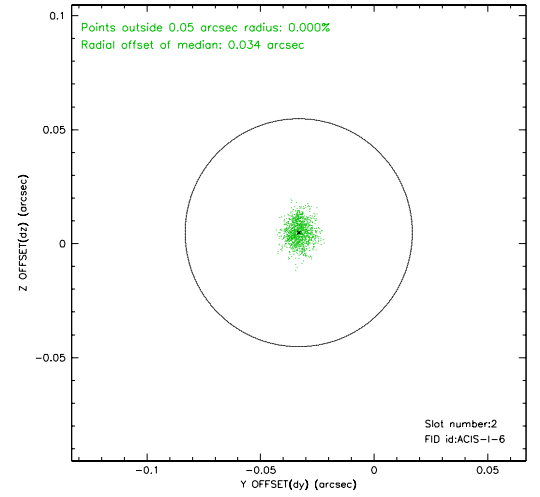
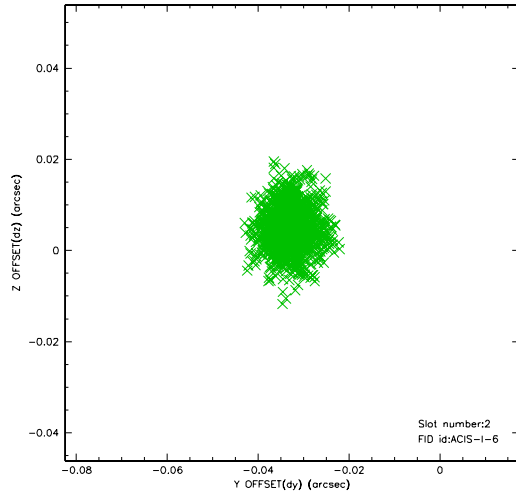
2.5.1 Slot 0



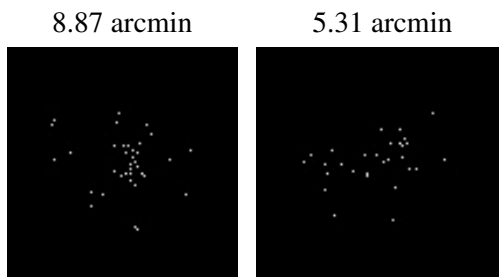
2.5.2 Slot 1



2.5.3 Slot 2



3 Point Sources



A Summary

A.1 Status

V&V Scientist	Jen Lauer
V&V Date (YYYY-MM-DD)	2006.07.30
V&V Edition	1
V&V Disposition and Status	OK
V&V Charge Time	4.742

A.2 Comments