

V&V Reference Report

L2 ASCDS Version : 8.4.5

Observation 3624 - L2 Version 3
Chandra X-Ray Center

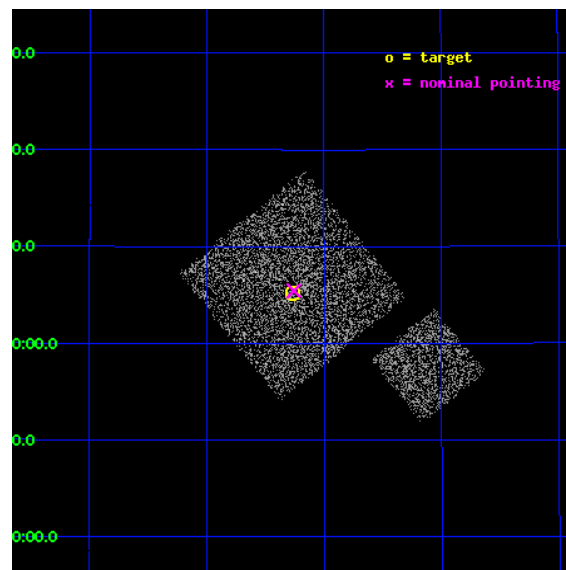
L2 Processing Date : Oct 25 2012

Contents

1	Front	2
2	OBI	3
2.1	OBI	3
2.1.1	Images	3
2.1.2	Bias	3
2.1.3	Parameters	4
2.1.4	Events	4
2.2	Compared Parameters	5
2.3	Aspect	6
2.4	Star Slots	9
2.4.1	Slot 3	9
2.4.2	Slot 4	10
2.4.3	Slot 5	11
2.4.4	Slot 6	12
2.4.5	Slot 7	13
2.5	FID Slots	14
2.5.1	Slot 0	14
2.5.2	Slot 1	15
2.5.3	Slot 2	16
A	Summary	17
A.1	Status	17
A.2	Comments	17

1 Front

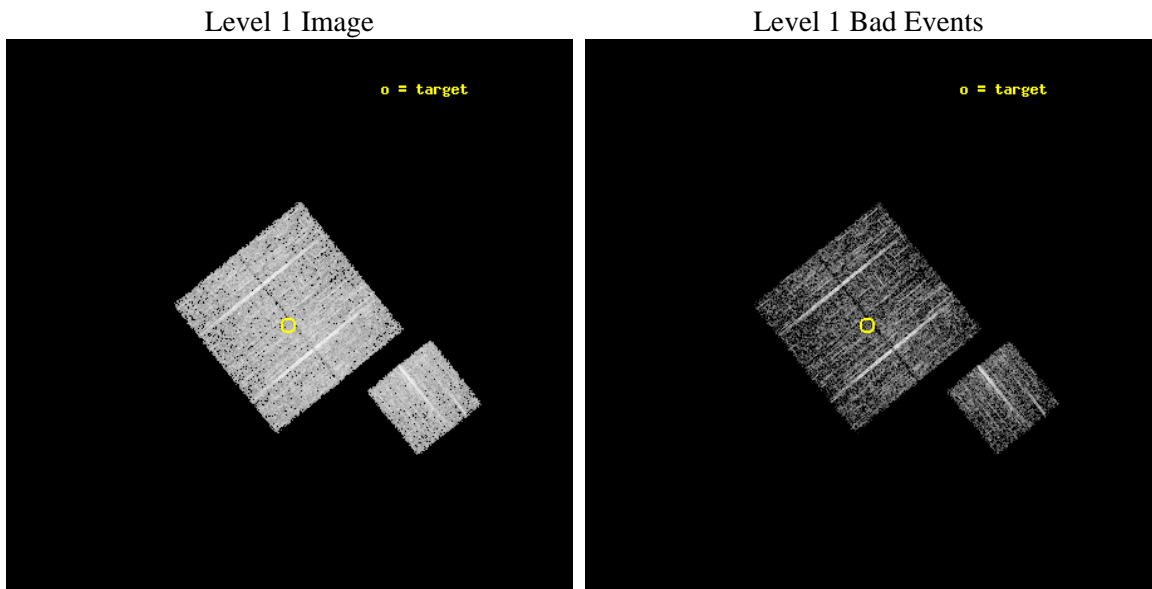
seq_num	900224	Sequence number
obs_id	3624	Observation id
title	CHANDRA LARGE SCALE SURVEY OF THE NOAO BOOTES DEEP FIELD	Proposal
observer	Dr. Stephen Murray	Principal investigator
object	NOAO FIELD F5	Source name
dtcycle	0	
cycle	P	events from which exps? Prim/Second/Both
ra_targ	217.816997	Observer's specified target RA [deg]
dec_targ	35.08647	Observer's specified target Dec [deg]
ra_nom	217.81432638463	Nominal RA [deg]
dec_nom	35.090588820996	Nominal Dec [deg]
roll_nom	141.01023193083	Nominal Roll [deg]
revision	3	Processing version of data
ontime	4674.5304383039	Sum of GTIs [s]
livetime	4613.4542567883	Livetime [s]
ontime0	4674.407318294	Sum of GTIs [s]
ontime1	4674.4483582973	Sum of GTIs [s]
ontime2	4674.4893983006	Sum of GTIs [s]
ontime3	4674.5304383039	Sum of GTIs [s]
ontime6	4674.3662782907	Sum of GTIs [s]
l2events	9564	Number of level 2 events



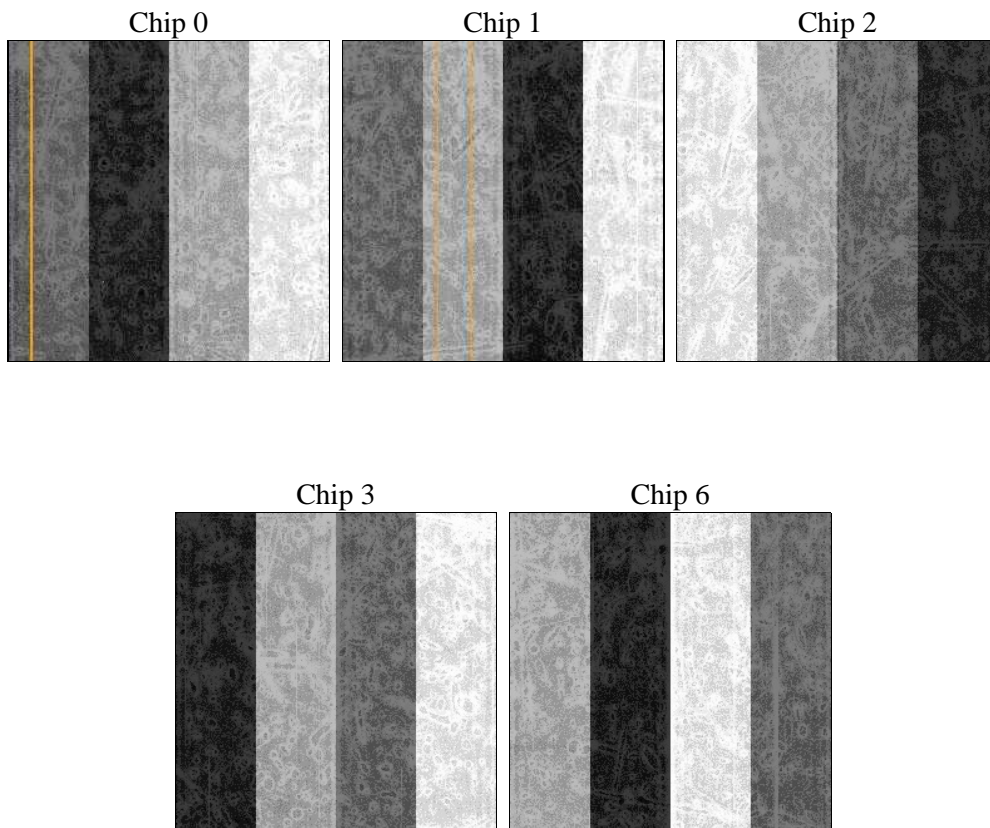
2 OBI

2.1 OBI

2.1.1 Images



2.1.2 Bias



2.1.3 Parameters

obi_num	1	Obi number	sched_exp_time	4900.000000	[s] Scheduled observation exposure time
ascdsver	8.4.5	Processing system revision	ontime	4674.5304383039	Sum of GTIs [s]
caldsver	4.5.2	 	ontime0	4674.407318294	Sum of GTIs [s]
date	2012-10-25T22:59:14	Date and time of file creation	ontime1	4674.4483582973	Sum of GTIs [s]
revision	3	Processing version of data	ontime2	4674.4893983006	Sum of GTIs [s]
			ontime3	4674.5304383039	Sum of GTIs [s]
			ontime6	4674.3662782907	Sum of GTIs [s]
			l1events	114726	Number of level 1 events

2.1.4 Events

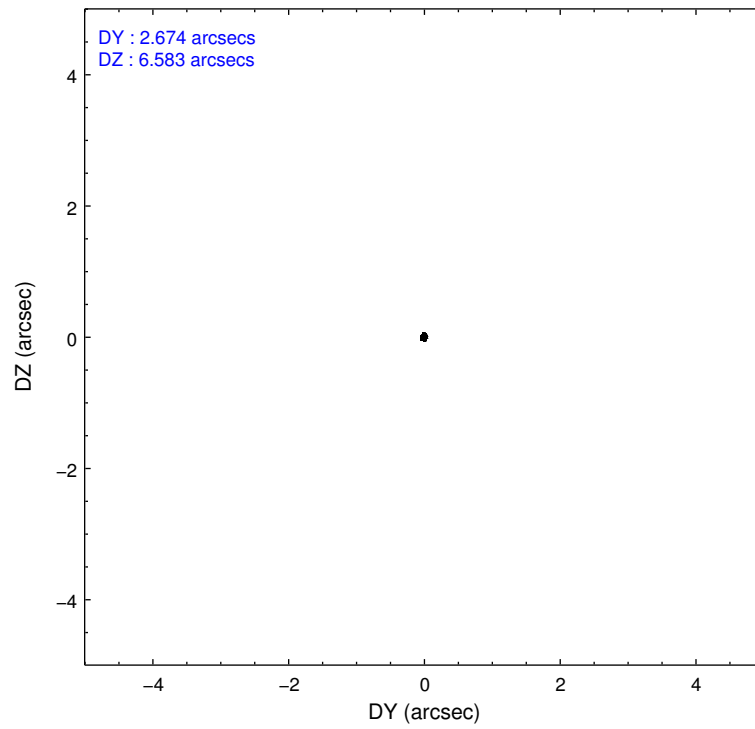
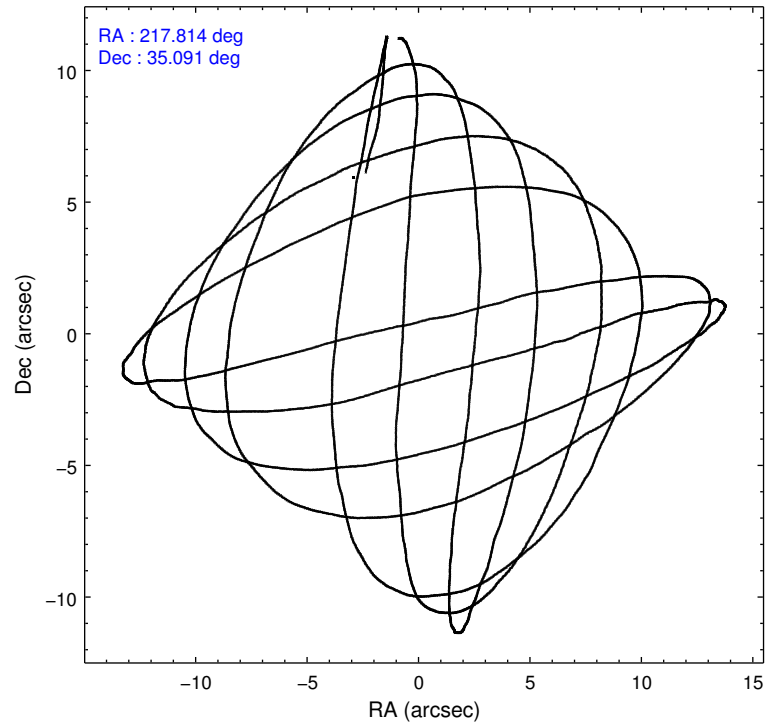
	ccd 0	ccd 1	ccd 2	ccd 3	ccd 6
level 1 events	22246	21429	24890	23205	22956
rejected events	19897	18904	22511	20986	20674
rejected %	89%	88%	90%	90%	90%

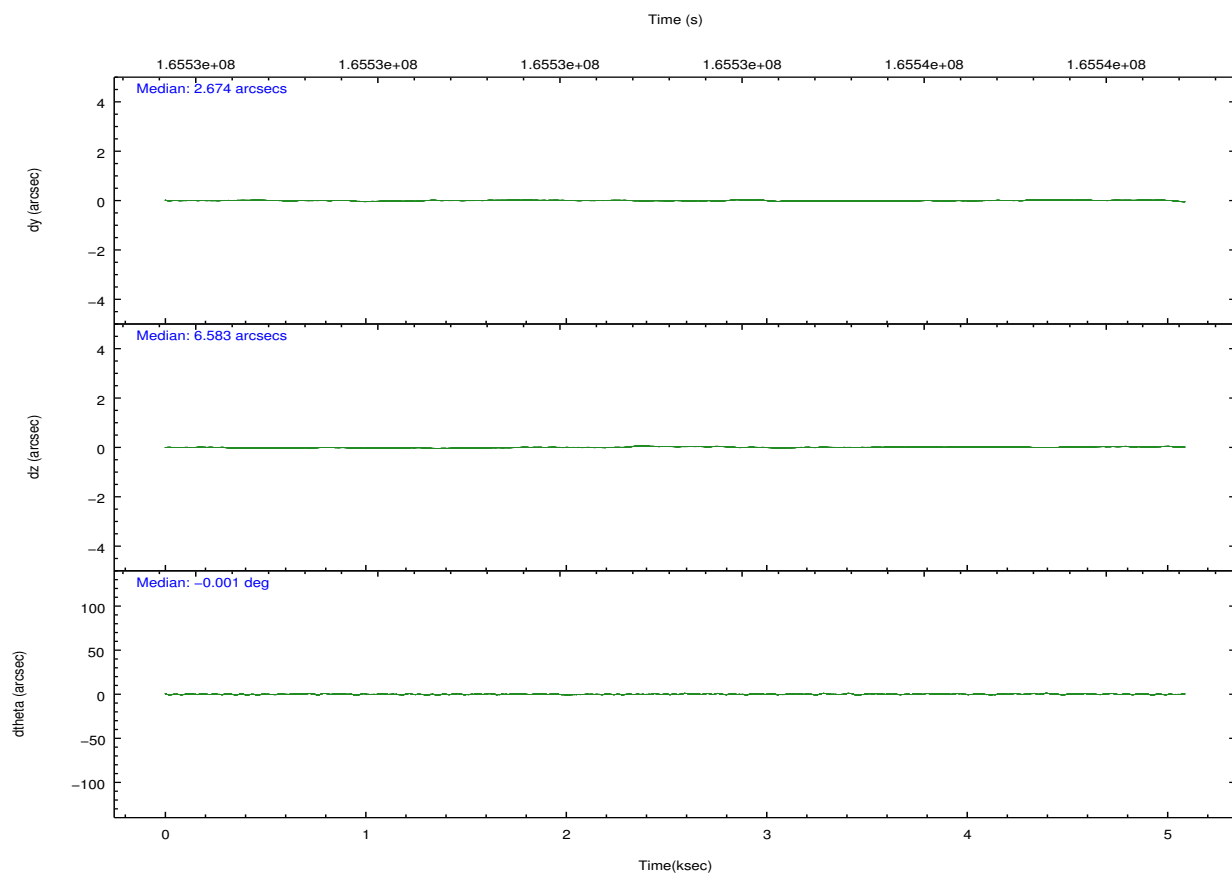
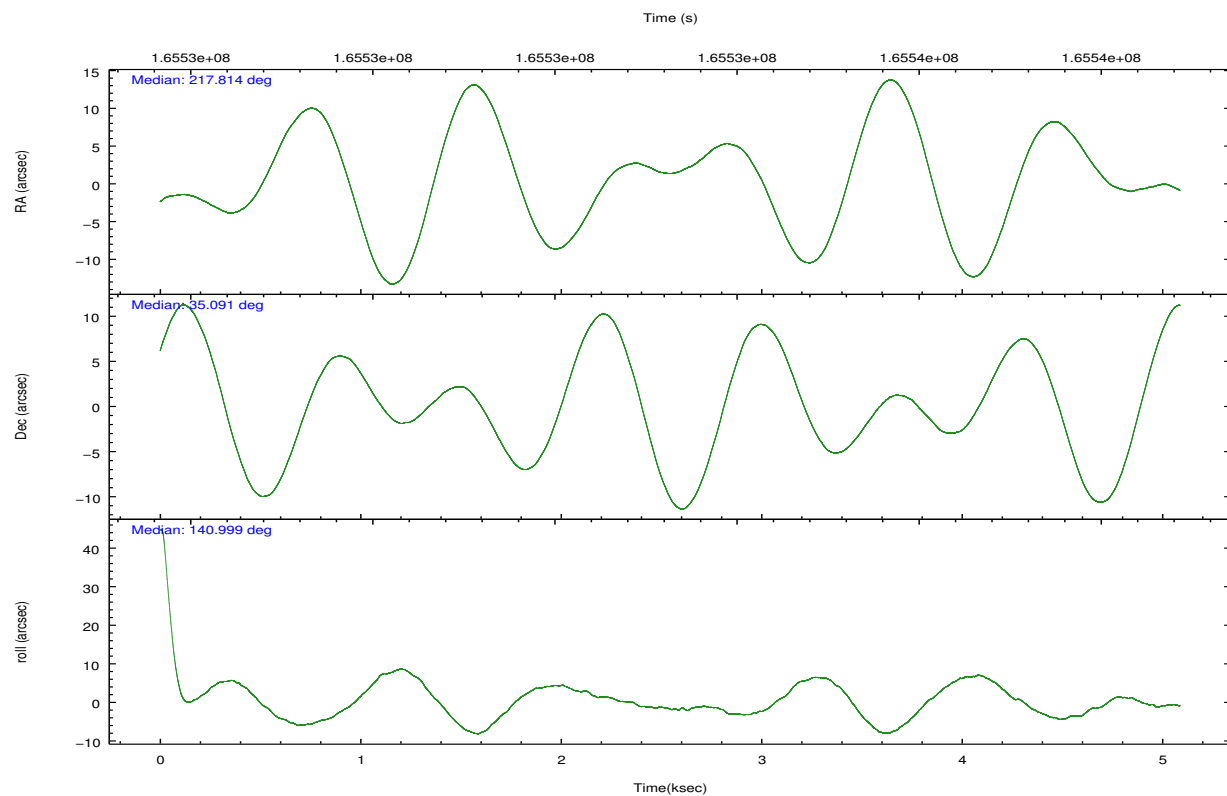
	ccd 0	ccd 1	ccd 2	ccd 3	ccd 6
grade 0 events	868	925	919	815	844
	3%	4%	3%	3%	3%
grade 1 events	11	5	13	14	8
	0%	0%	0%	0%	0%
grade 2 events	566	540	560	461	485
	2%	2%	2%	1%	2%
grade 3 events	251	307	267	243	272
	1%	1%	1%	1%	1%
grade 4 events	230	288	236	287	251
	1%	1%	0%	1%	1%
grade 5 events	623	785	624	755	762
	2%	3%	2%	3%	3%
grade 6 events	437	469	403	414	433
	1%	2%	1%	1%	1%
grade 7 events	19260	18110	21868	20216	19901
	86%	84%	87%	87%	86%

2.2 Compared Parameters

Parameter	Planned	Actual	Parameter	Planned	Actual
Instrument	ACIS	ACIS	Obspar format version number	7	7
Detector	ACIS-01236	ACIS-01236	Obspar file type	PREDICTED	ACTUAL
Grating	NONE	NONE	Obspar update status	NONE	UPDATED
Data mode	VFAINT	VFAINT	Number of optional ACIS chips dropped	0	0
Observation mode	POINTING	POINTING	On-chip summing requested	N	N
[deg] Pointing RA	217.847405	217.8143263846295	Subarray requested	NONE	NONE
[deg] Pointing Dec	35.086394	35.09058882099587	Alternating exposures requested	N	N
[deg] Pointing Roll	140.782520	141.0102319308255	[s] Primary exposure time	0.000000	3.1
[mm] SIM focus pos	-0.782348	-0.7809083437167272			
[mm] SIM defocus	0	0.001439871863259334			
[mm] SIM translation stage pos	-233.592463	-233.5874344608287			
[mm] SIM translation stage offset	0	-0.005018542100998502			
[s] Observation start time (MET)	165531274.184000	165530897.95586			
Observation start date	2003-03-31T20:53:30	2003-03-31T20:48:17			
[s] Observation end time (MET)	165536174.184000	165536307.90608			
Observation end date	2003-03-31T22:15:10	2003-03-31T22:18:27			
Read mode	TIMED	TIMED			

2.3 Aspect



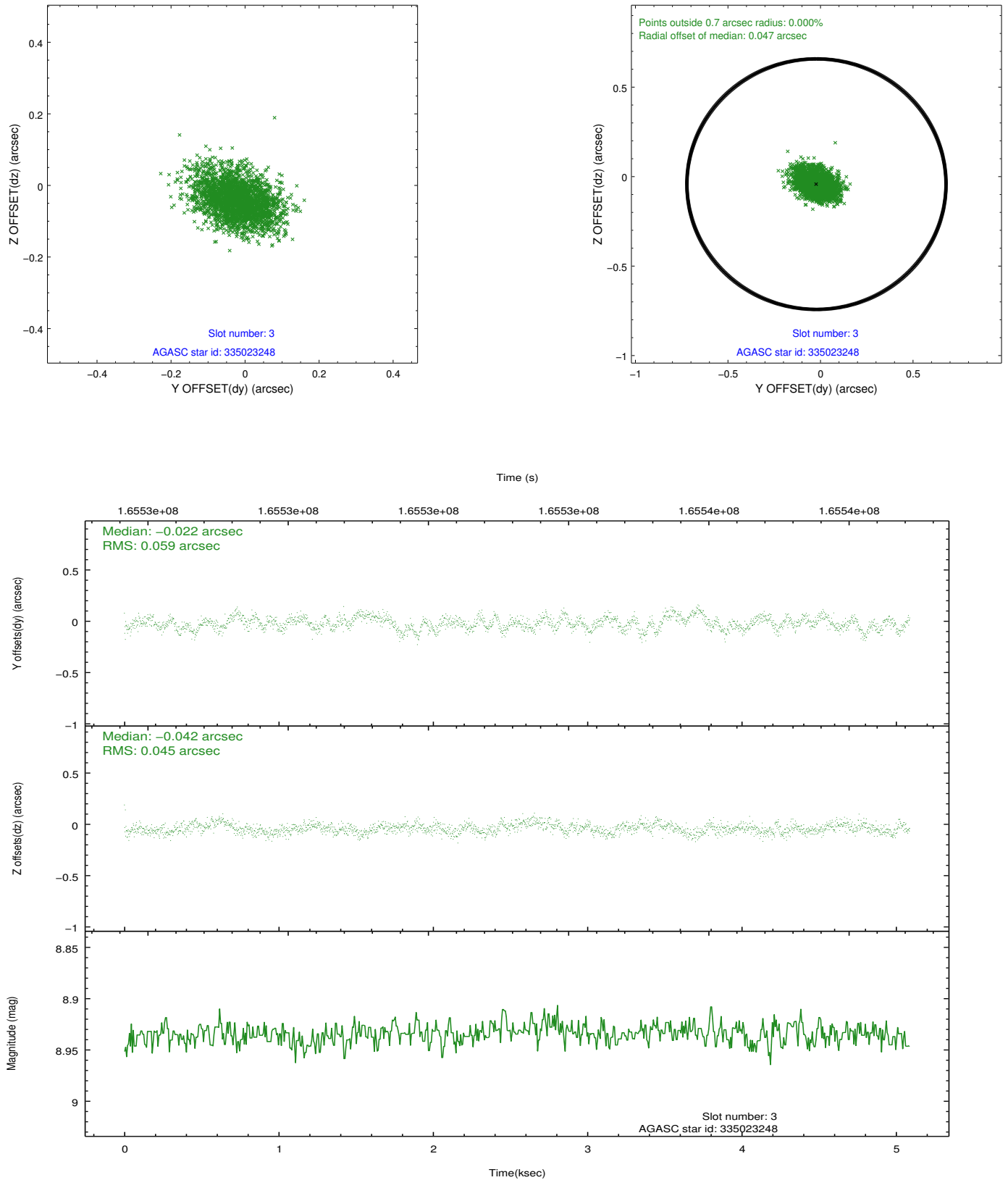


Slot Statistics

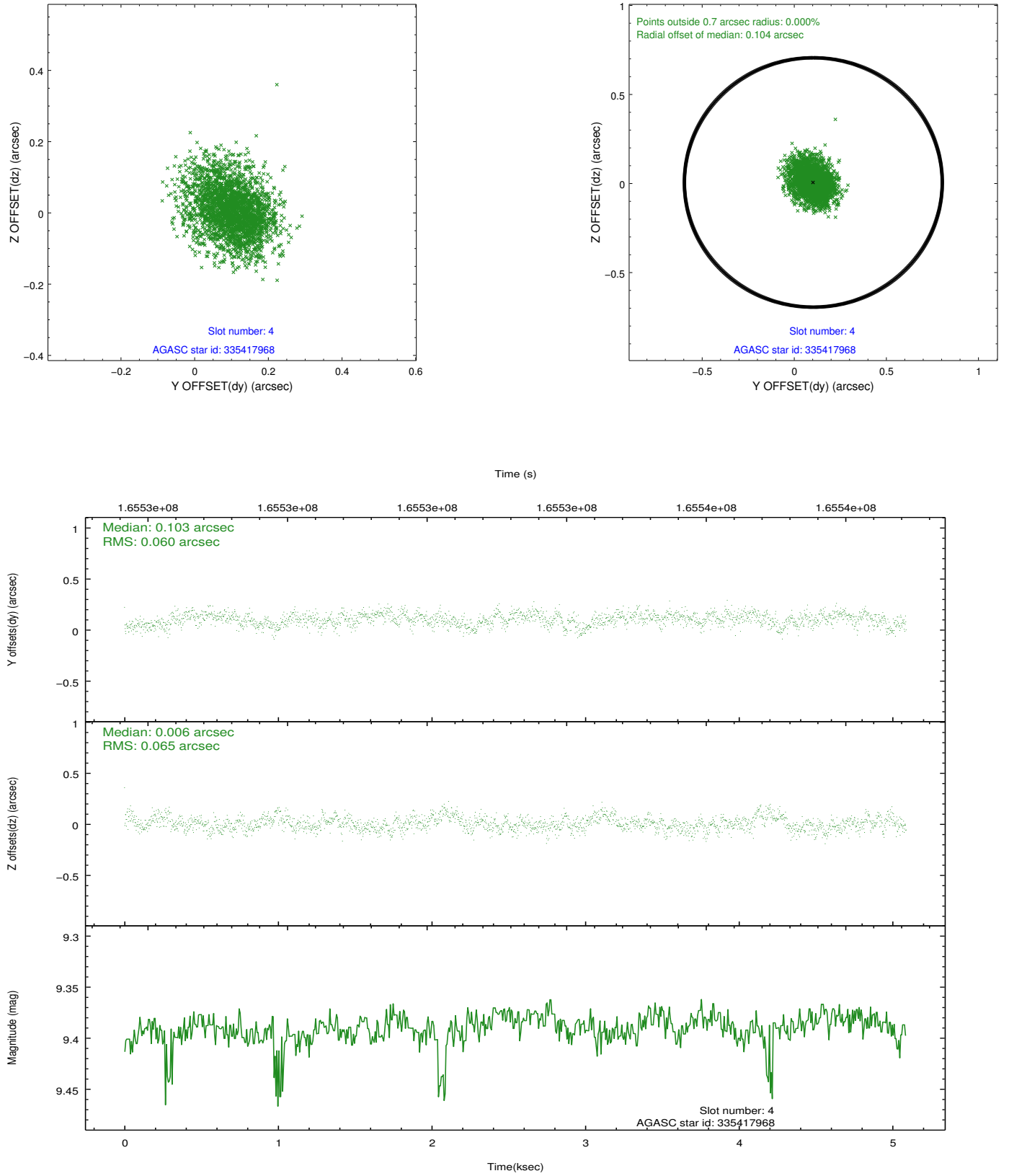
slot	status	id	mag	n_pts	med_dy	med_dz	dr1	dr2	ra	dec	mean_y	mean_z
0	FID	ACIS-I-1	7.25	1241	0.013	-0.006	0.006	0.011	0.000000	0.000000	937.13	-829.99
1	FID	ACIS-I-5	7.24	1241	-0.084	0.052	0.006	0.011	0.000000	0.000000	-1810.38	1067.01
2	FID	ACIS-I-6	7.26	1241	-0.020	0.025	0.007	0.011	0.000000	0.000000	401.39	1712.80
3	GUIDE	335023248	8.93	2481	-0.022	-0.042	0.078	0.131	217.634832	34.944512	163.53	792.03
4	GUIDE	335417968	9.39	2476	0.103	0.006	0.094	0.156	217.358149	35.055285	1048.70	996.43
5	GUIDE	335421696	8.96	2481	-0.109	0.150	0.074	0.116	218.045699	35.772449	1114.04	-2279.16
6	GUIDE	335422272	9.47	2470	0.064	0.094	0.096	0.154	217.586135	35.522660	1587.67	-733.99
7	GUIDE	335028336	9.48	2479	-0.034	-0.211	0.107	0.164	217.189840	34.665629	555.16	2399.47

2.4 Star Slots

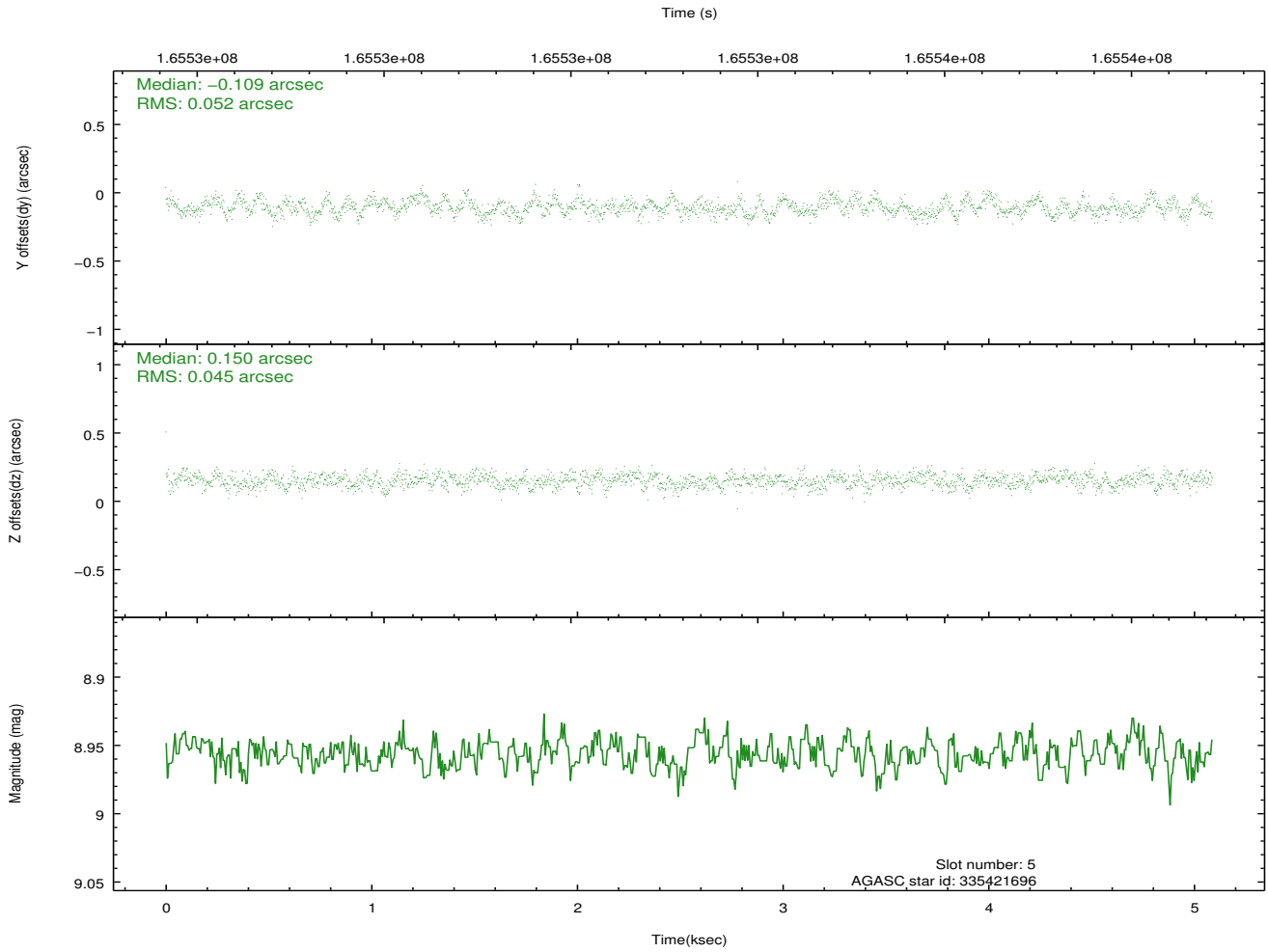
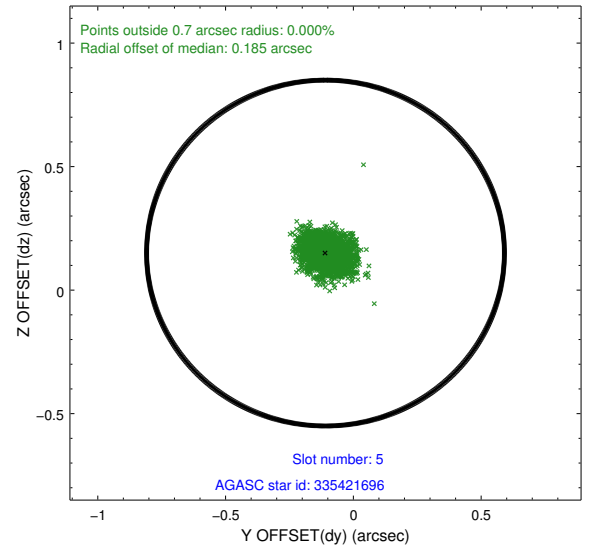
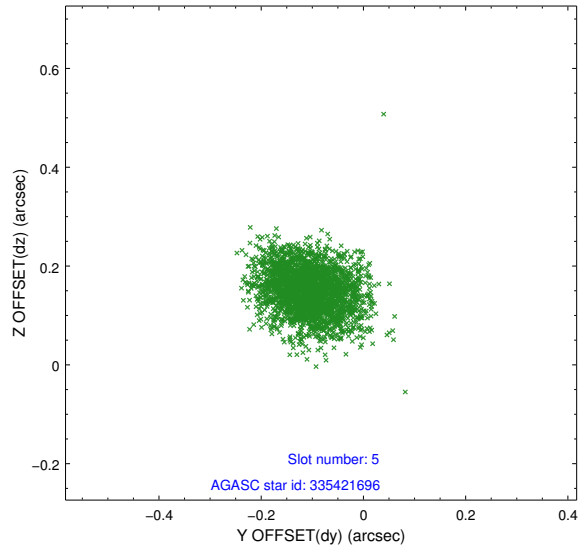
2.4.1 Slot 3



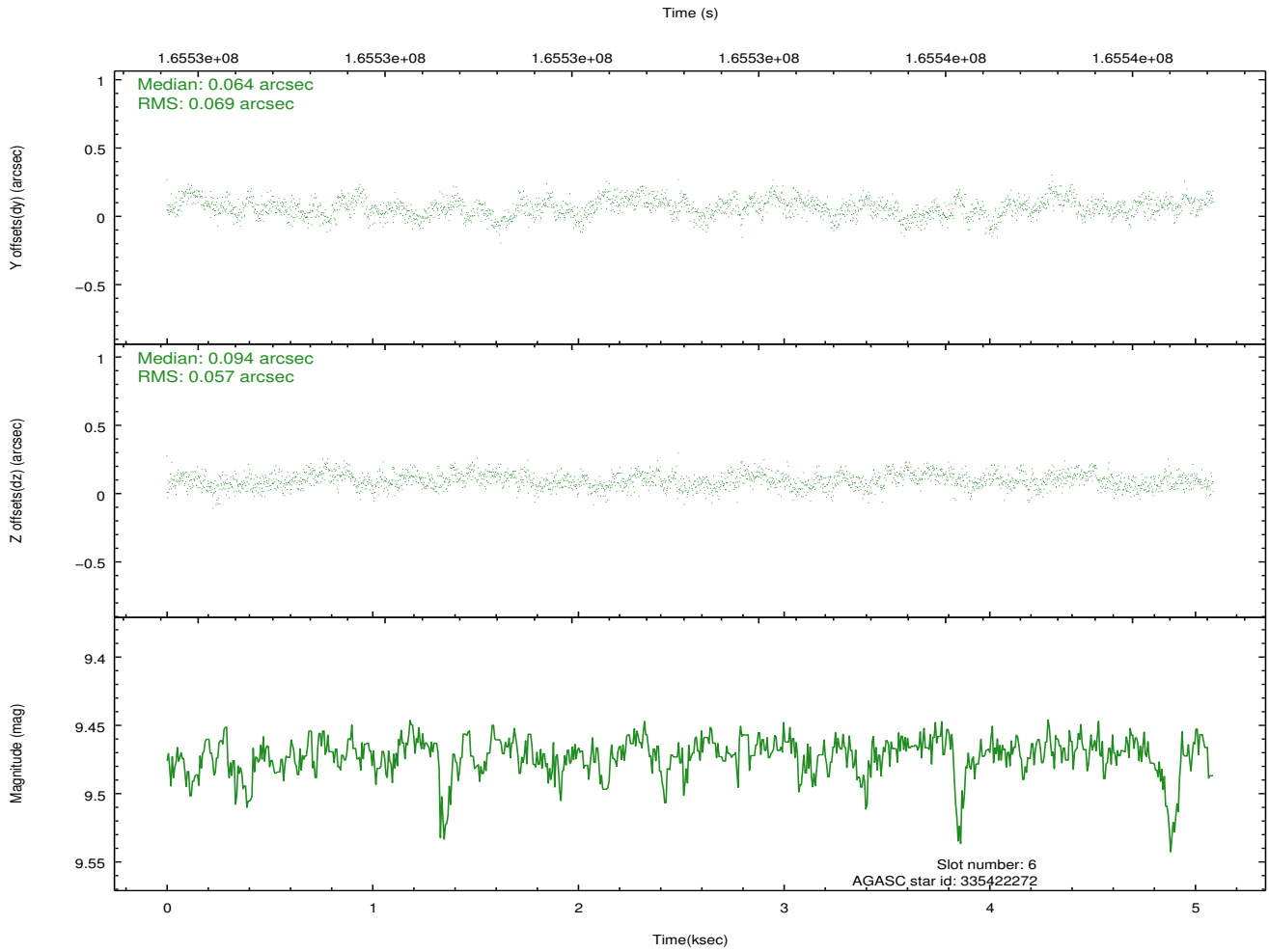
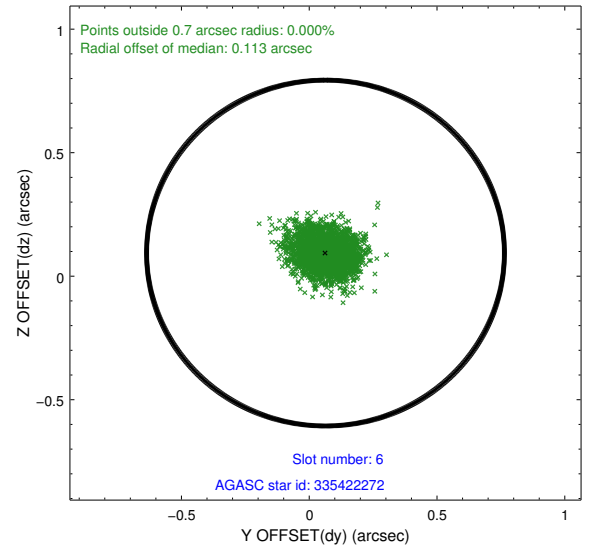
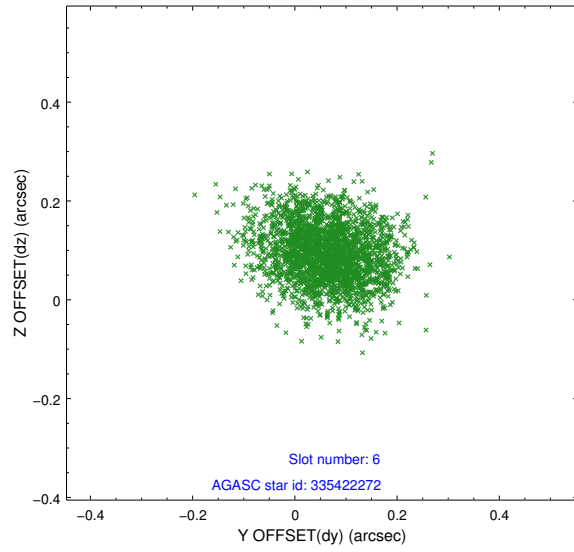
2.4.2 Slot 4



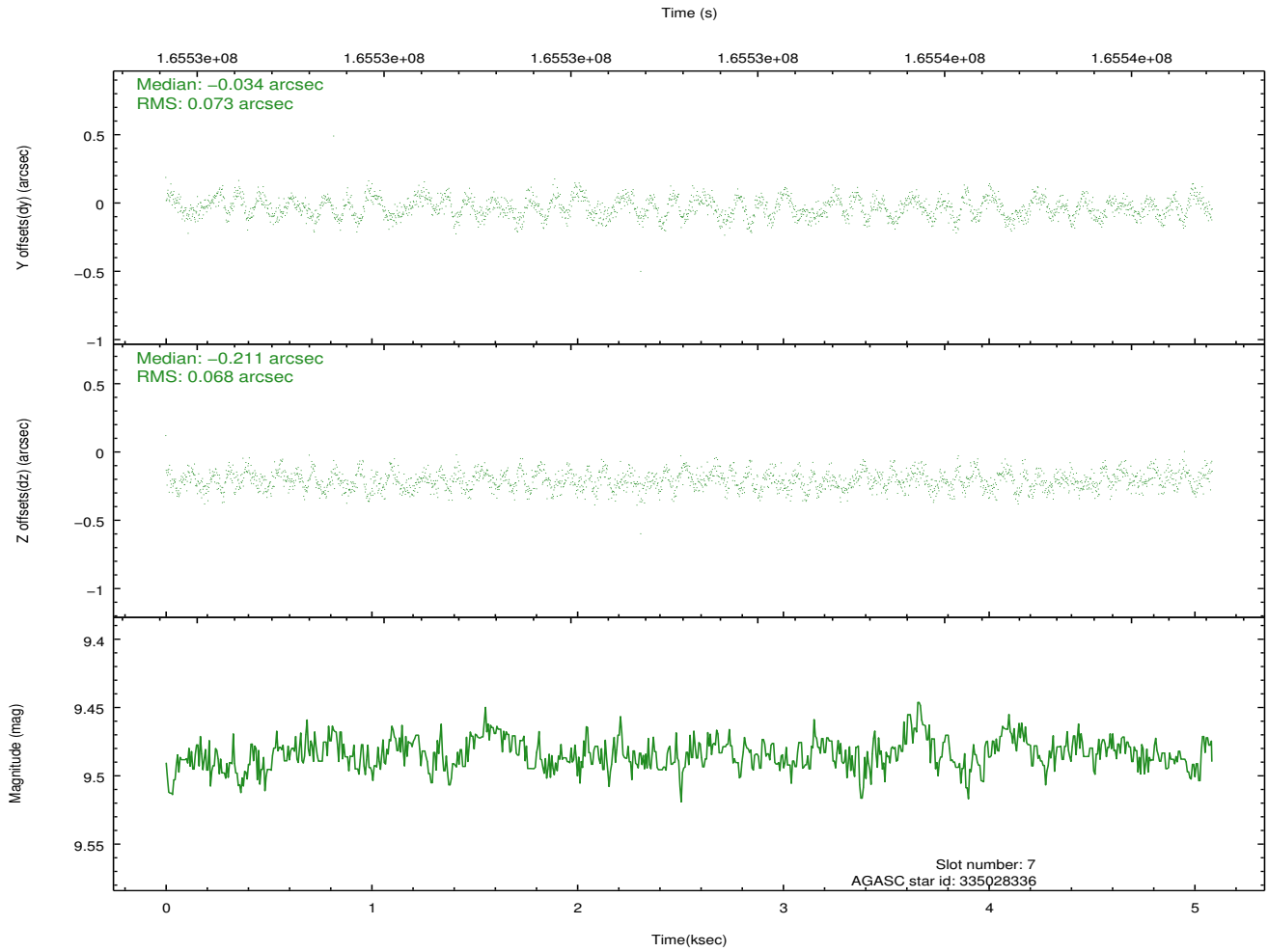
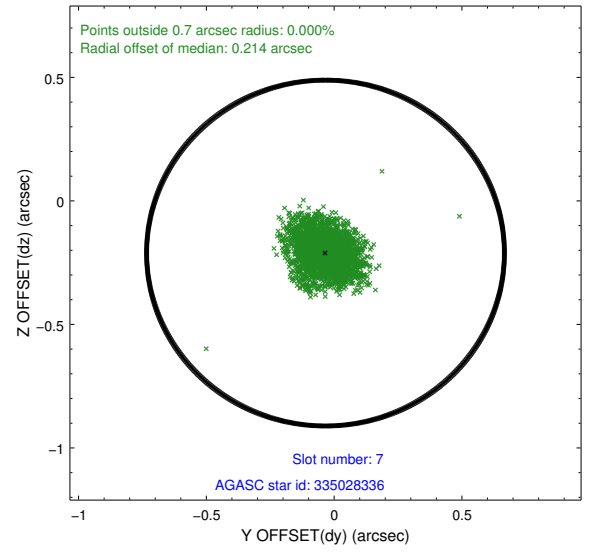
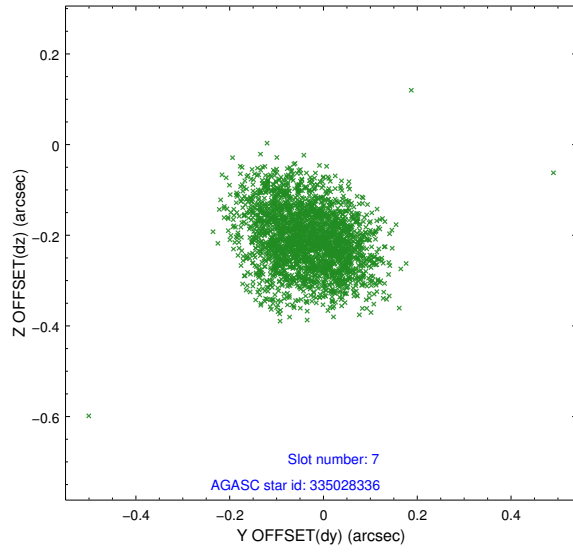
2.4.3 Slot 5



2.4.4 Slot 6

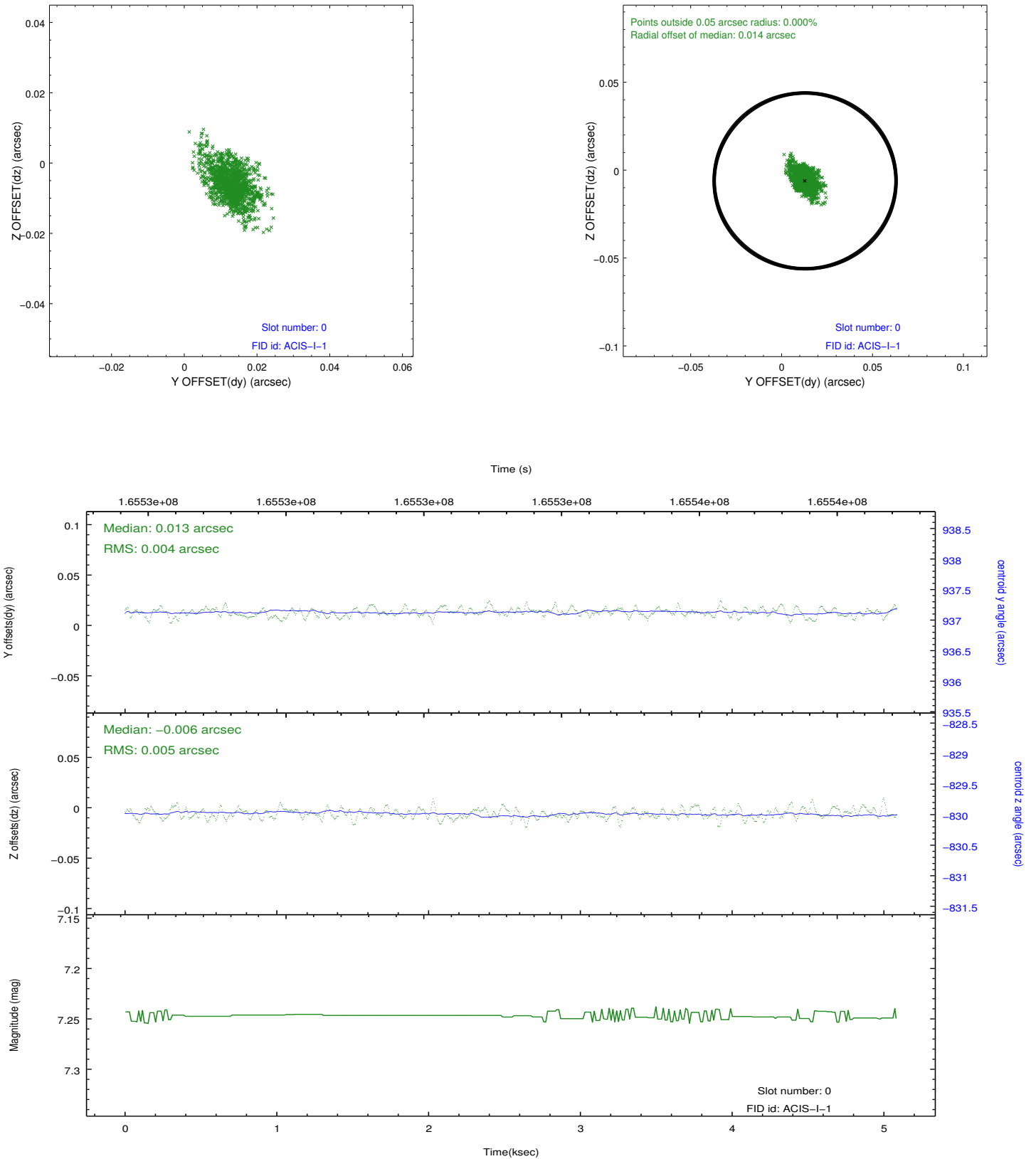


2.4.5 Slot 7

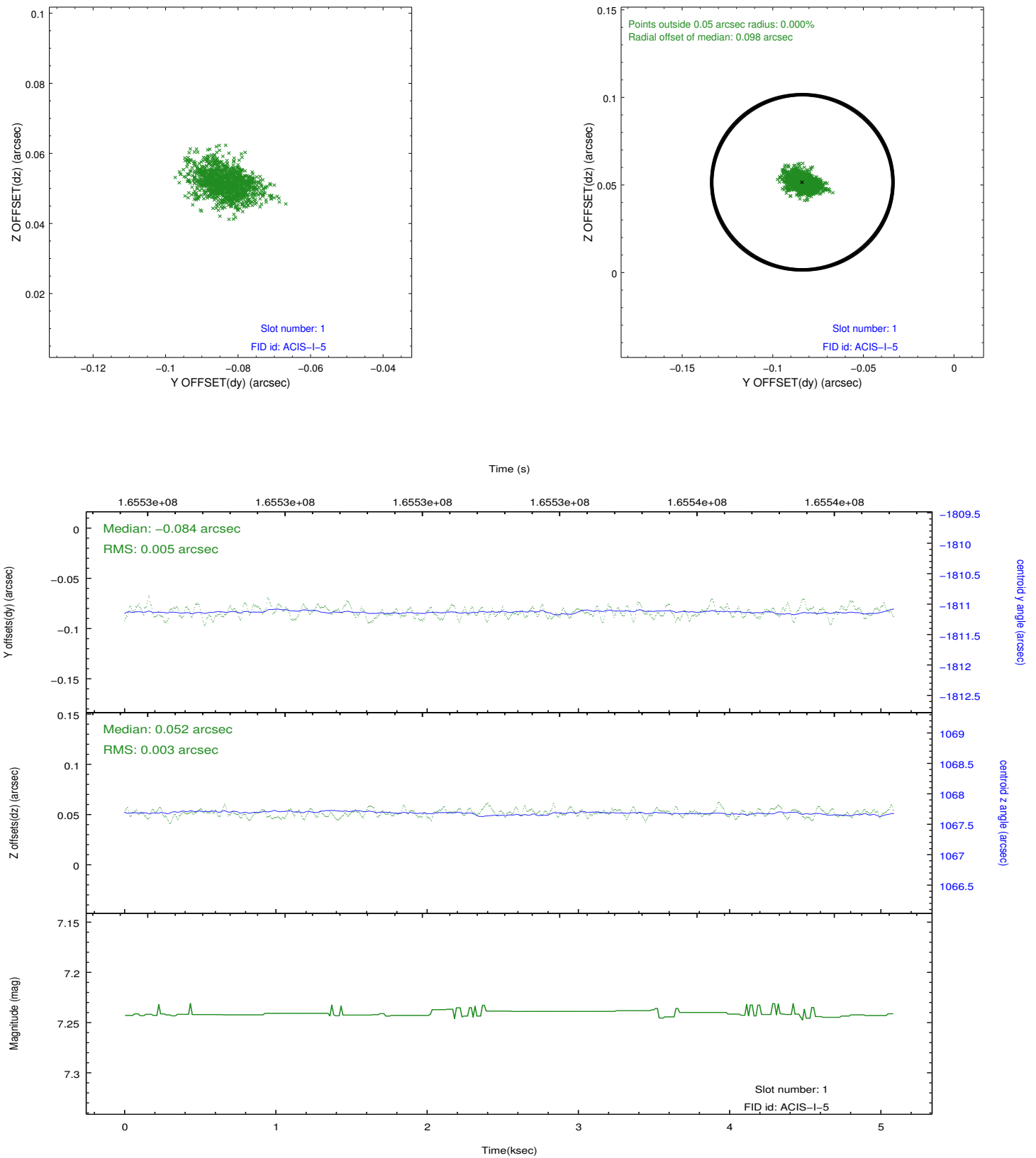


2.5 FID Slots

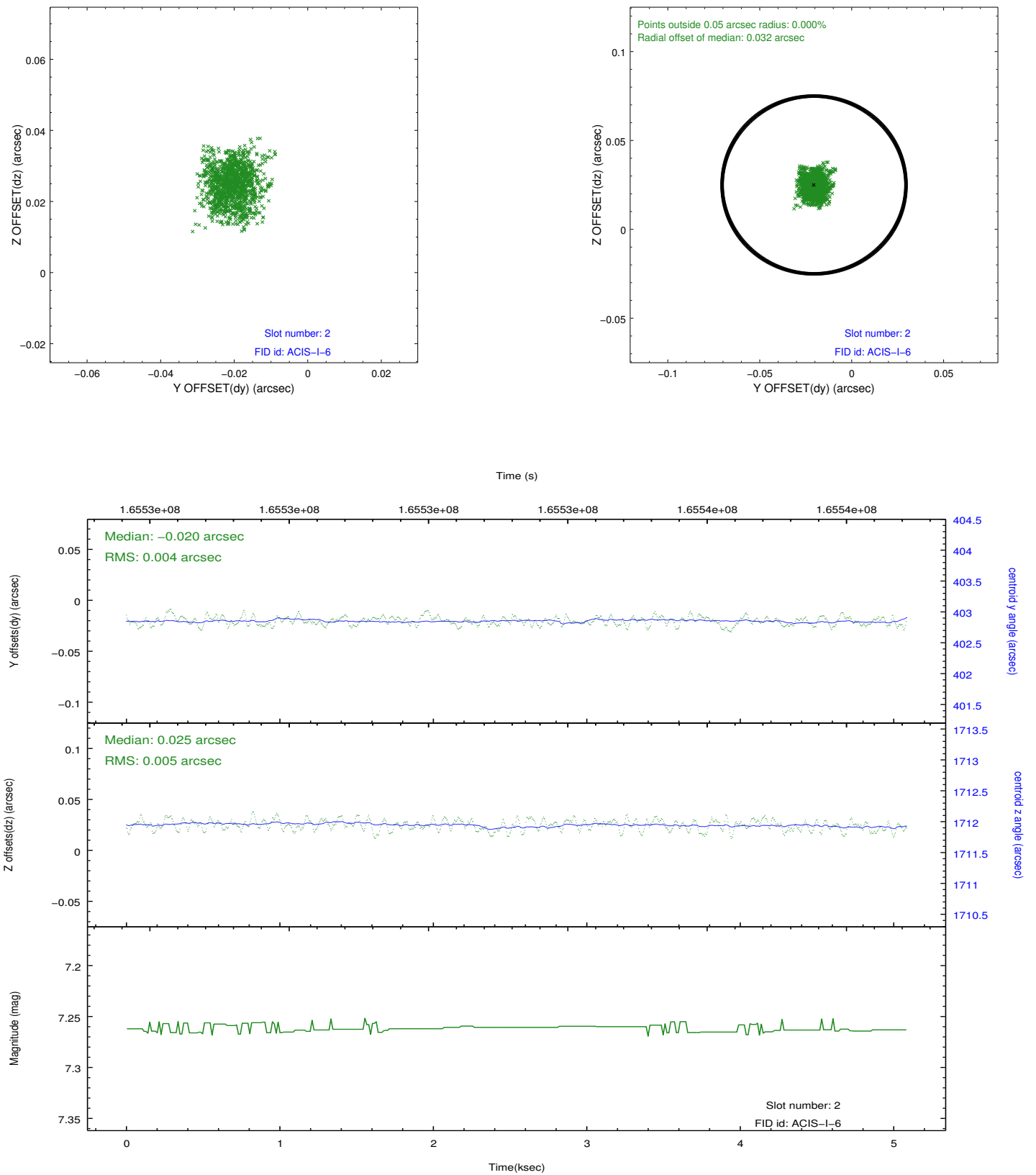
2.5.1 Slot 0



2.5.2 Slot 1



2.5.3 Slot 2



A Summary

A.1 Status

V&V Scientist	Beth Sundheim
V&V Date (YYYY-MM-DD)	2012.11.09
V&V Edition	1
V&V Disposition and Status	OK
V&V Charge Time	4.675

A.2 Comments