

# V&V Reference Report

## L2 ASCDS Version : 7.6.8

Observation 3620 - L2 Version 001  
Chandra X-Ray Center

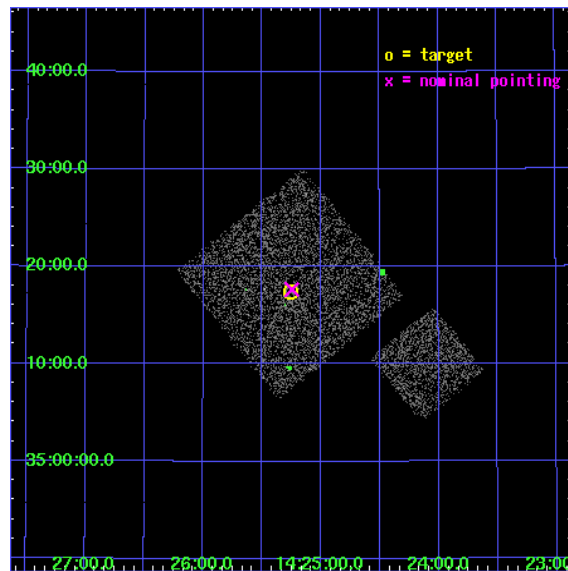
L2 Processing Date : Jul 25 2006

## Contents

<b>1</b>	<b>Front</b>	<b>2</b>
<b>2</b>	<b>OBI</b>	<b>3</b>
2.1	OBI . . . . .	3
2.1.1	Images . . . . .	3
2.1.2	Bias . . . . .	3
2.1.3	Parameters . . . . .	4
2.1.4	Events . . . . .	4
2.2	Compared Parameters . . . . .	5
2.3	Aspect . . . . .	6
2.4	Star Slots . . . . .	9
2.4.1	Slot 3 . . . . .	9
2.4.2	Slot 4 . . . . .	10
2.4.3	Slot 5 . . . . .	11
2.4.4	Slot 6 . . . . .	12
2.4.5	Slot 7 . . . . .	13
2.5	FID Slots . . . . .	14
2.5.1	Slot 0 . . . . .	14
2.5.2	Slot 1 . . . . .	15
2.5.3	Slot 2 . . . . .	16
<b>3</b>	<b>Point Sources</b>	<b>17</b>
<b>A</b>	<b>Summary</b>	<b>18</b>
A.1	Status . . . . .	18
A.2	Comments . . . . .	18

# 1 Front

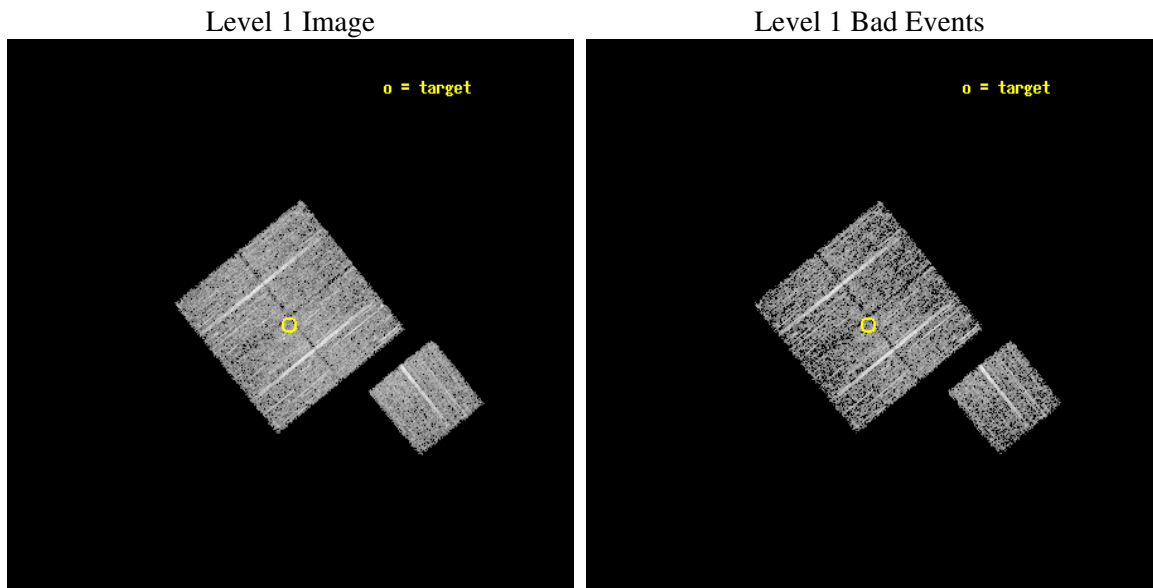
seq_num	900220
obs_id	3620
title	CHANDRA LARGE SCALE SURVEY OF THE NOAO BOOTES DEEP FIELD
observer	Dr. Stephen Murray
object	NOAO FIELD F60
dtcycle	0
cycle	P
ra_targ	216.314346
dec_targ	35.290164
ra_nom	216.31173964807
dec_nom	35.29426081872
roll_nom	141.01028938355
revision	2
ontime	4773.9999908209
livetime	4711.6241663731
ontime0	4773.9999908209
ontime1	4773.9999908209
ontime2	4773.9999908209
ontime3	4773.9999908209
ontime6	4773.9999908209
l2events	9990



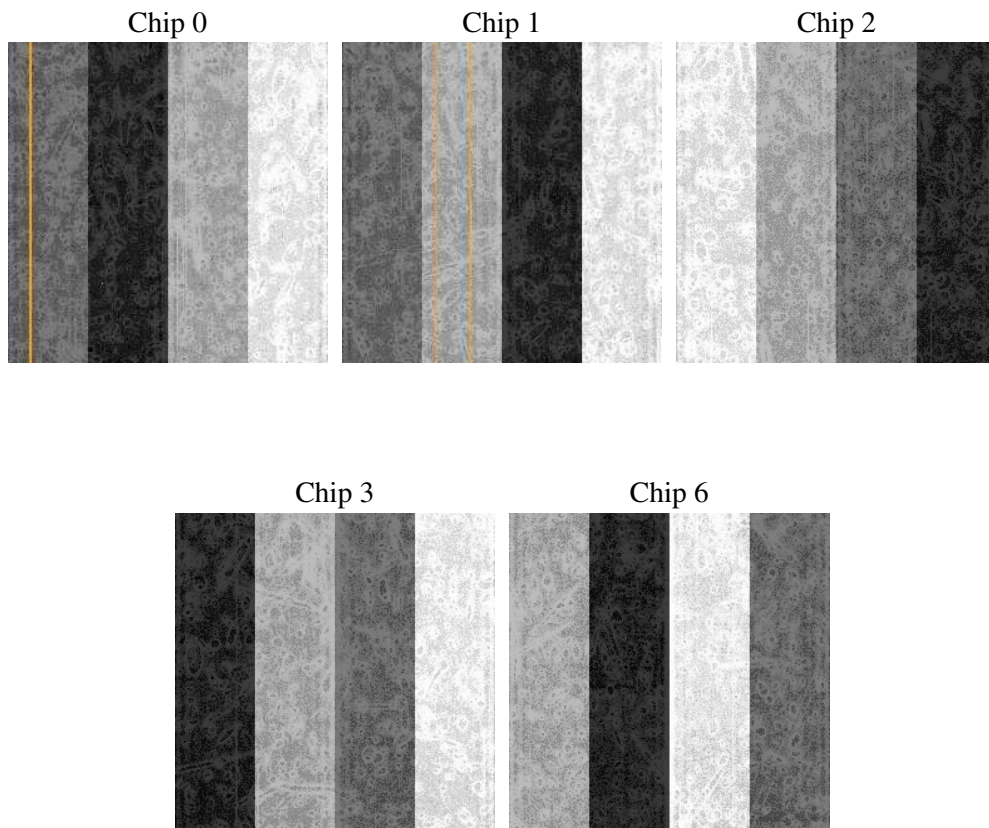
## 2 OBI

### 2.1 OBI

#### 2.1.1 Images



#### 2.1.2 Bias



### 2.1.3 Parameters

obi_num	0
ascdsver	7.6.8
caldbver	3.2.2
date	2006-07-25T23:35:58
revision	2

sched_exp_time	5000.000000
ontime	4777.4777413607
ontime0	4777.4777612686
ontime1	4777.4777612686
ontime2	4777.4777612686
ontime3	4777.4777413607
ontime6	4777.4777612686
l1events	124034

### 2.1.4 Events

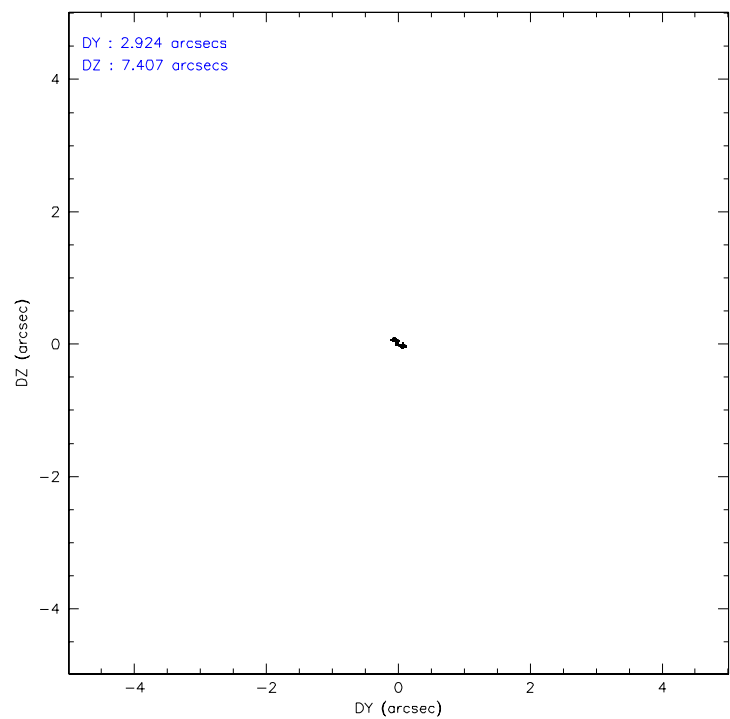
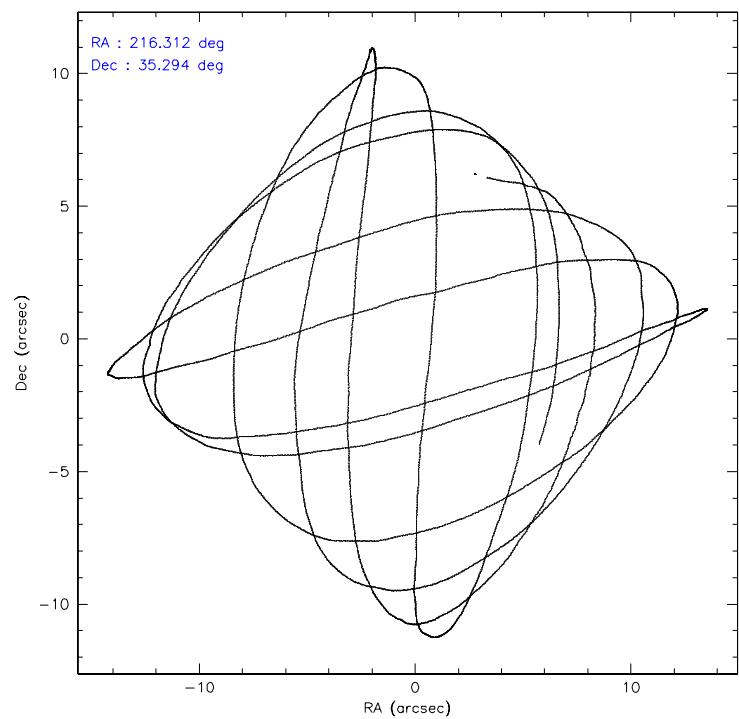
	<b>ccd 0</b>	<b>ccd 1</b>	<b>ccd 2</b>	<b>ccd 3</b>	<b>ccd 6</b>
level 1 events	22934	24154	27075	25364	24507
rejected events	20546	21561	24607	23040	22125
rejected %	89%	89%	90%	90%	90%

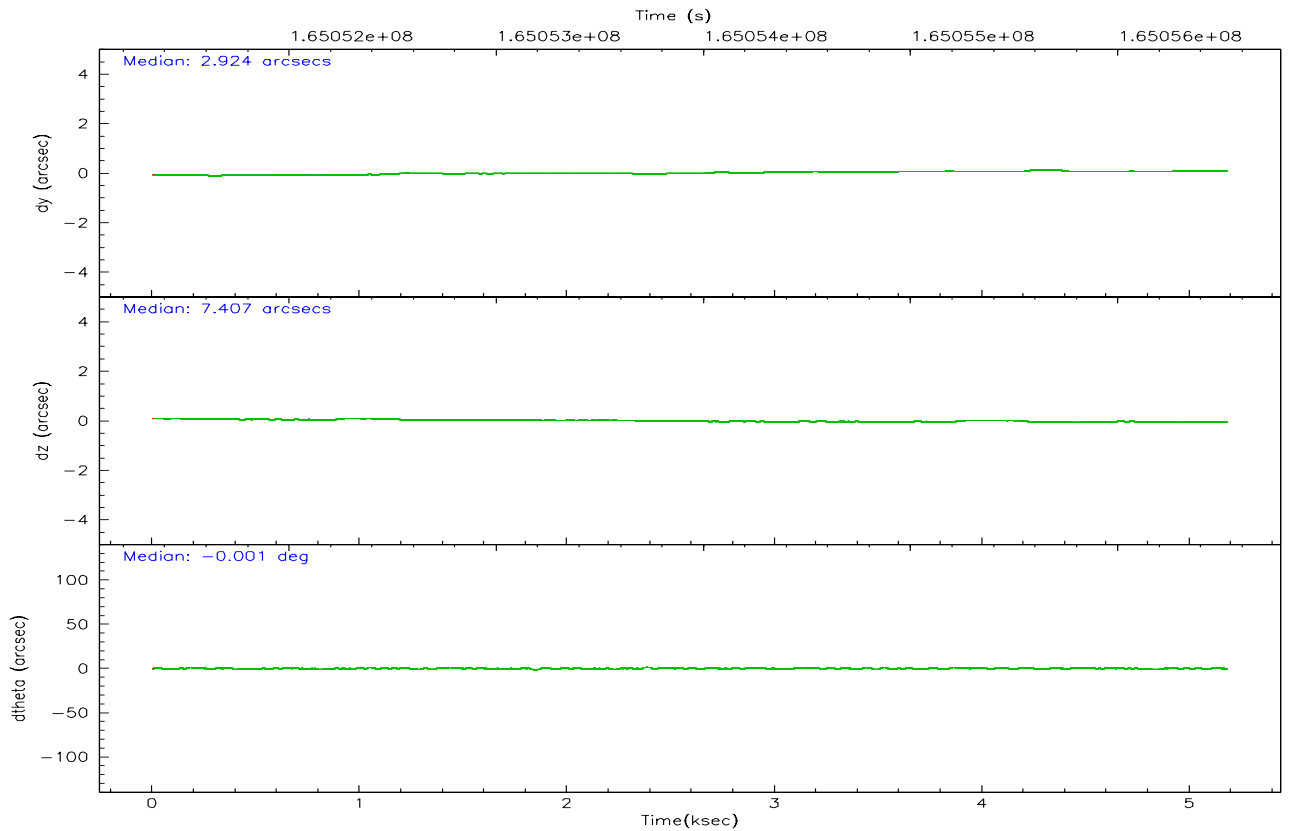
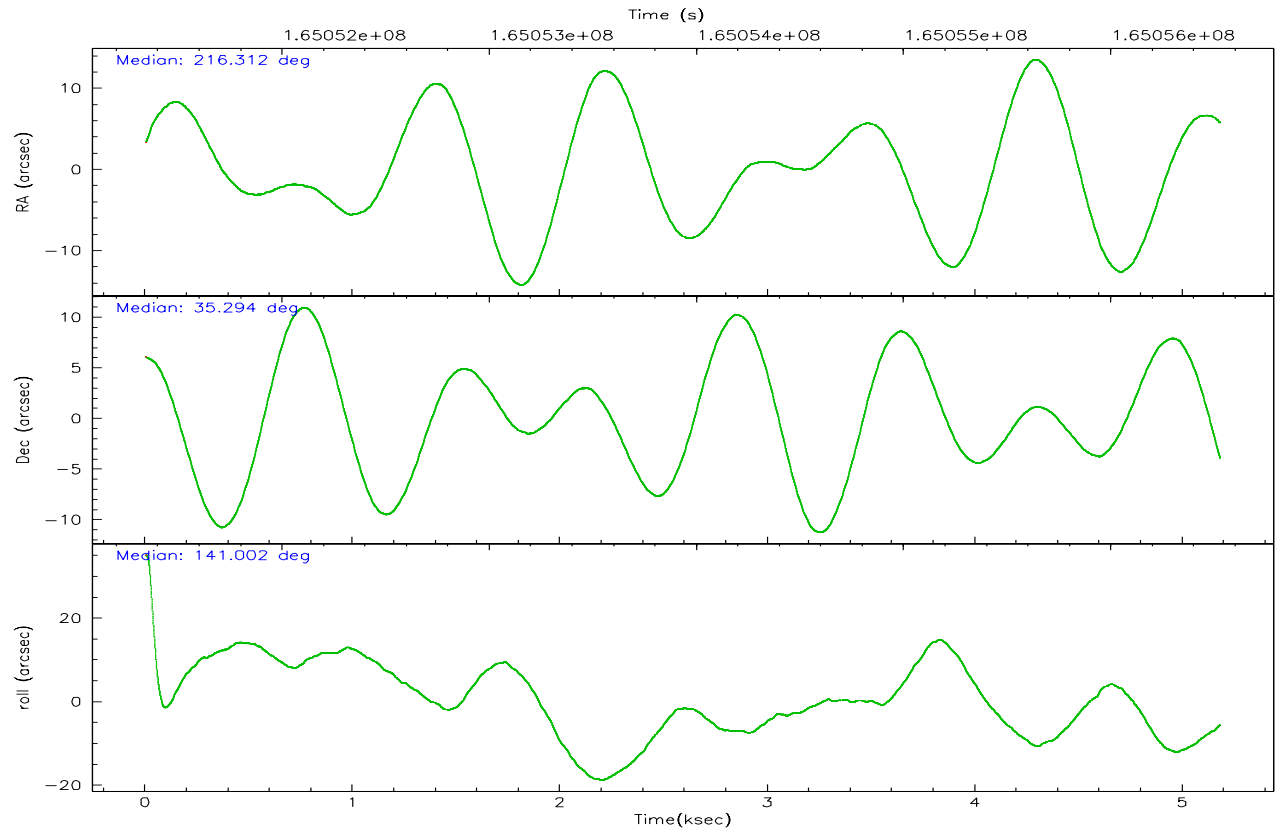
	<b>ccd 0</b>	<b>ccd 1</b>	<b>ccd 2</b>	<b>ccd 3</b>	<b>ccd 6</b>
grade 0 events	869	945	945	911	869
	3%	3%	3%	3%	3%
grade 1 events	14	3	20	11	10
	0%	0%	0%	0%	0%
grade 2 events	520	547	607	494	501
	2%	2%	2%	1%	2%
grade 3 events	297	340	253	235	288
	1%	1%	0%	0%	1%
grade 4 events	285	309	266	260	292
	1%	1%	0%	1%	1%
grade 5 events	698	767	670	794	799
	3%	3%	2%	3%	3%
grade 6 events	420	455	399	427	433
	1%	1%	1%	1%	1%
grade 7 events	19831	20788	23915	22232	21315
	86%	86%	88%	87%	86%

## 2.2 Compared Parameters

Parameter	Planned	Actual	Parameter	Planned	Actual
Instrument	ACIS	ACIS	Obspar format version number	6	6
Detector	ACIS-01236	ACIS-01236	Obspar file type	PREDICTED	ACTUAL
Grating	NONE	NONE	Obspar update status	NONE	UPDATED
Data mode	VFAINT	VFAINT	On-chip summing requested	N	N
Observation mode	POINTING	POINTING	Subarray requested	NONE	NONE
Pointing RA	216.344836	216.311739648069	Alternating exposures requested	N	N
Pointing Dec	35.290084	35.29426081872029	Primary exposure time	0.000000	3.1
Pointing Roll	140.782382	141.0102893835482			
SIM focus pos (mm)	-0.782348	-0.7809083437167272			
SIM defocus (mm)	0	0.001439871863259334			
SIM translation stage pos (mm)	-233.592463	-233.5874344608287			
SIM translation stage offset (mm)	0	-0.005018542100998502			
Observation start time	165051529.184000	165051153.86063			
Observation start date	2003-03-26T07:37:45	2003-03-26T07:32:33			
Observation end time	165056529.184000	165056663.23587			
Observation end date	2003-03-26T09:01:05	2003-03-26T09:04:23			
Read mode	TIMED	TIMED			

## 2.3 Aspect





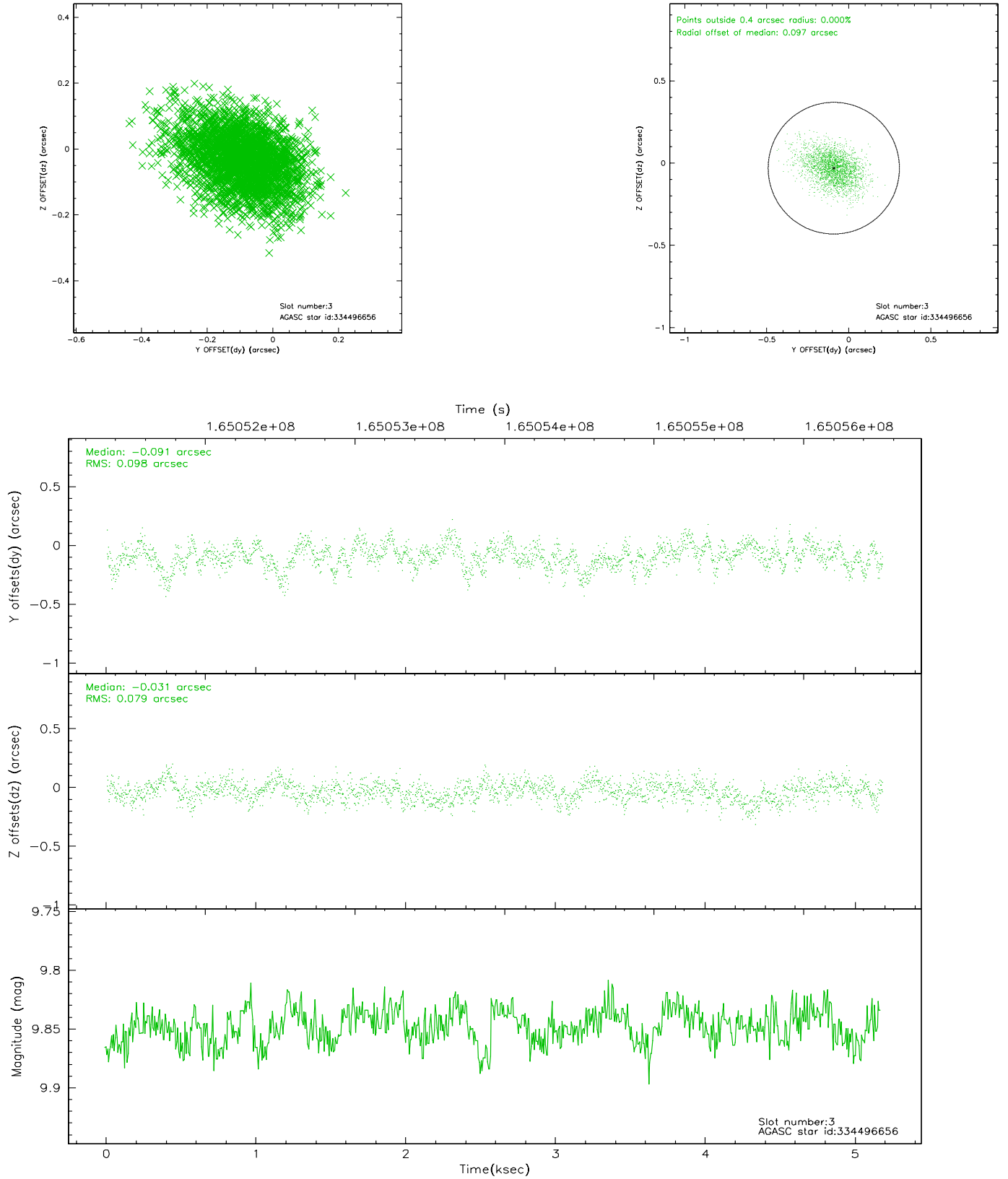
### Slot Statistics

slot	status	id	mag	n_pts	med_dy	med_dz	dr1	dr2	ra	dec	mean_y	mean_z
0	FID	ACIS-I-1	7.25	1264	-0.008	0.043	0.006	0.011	0.000000	0.000000	936.84	-830.79
1	FID	ACIS-I-5	7.25	1264	-0.055	0.048	0.007	0.011	0.000000	0.000000	-1810.64	1066.17
2	FID	ACIS-I-6	7.26	1264	-0.028	-0.021	0.006	0.010	0.000000	0.000000	401.14	1711.89
3	GUIDE	334496656	9.85	2526	-0.091	-0.031	0.131	0.225	215.929218	35.031287	361.63	1494.93
4	GUIDE	334497312	9.87	2519	0.107	-0.059	0.121	0.190	215.482164	35.047592	1424.92	2276.54
5	GUIDE	335414448	7.36	2527	-0.098	0.016	0.069	0.108	216.992261	35.577204	-810.62	-2002.84
6	GUIDE	335419120	9.65	2523	0.035	0.174	0.105	0.172	216.521861	35.833546	837.21	-1842.86
7	GUIDE	335030384	8.83	2526	0.055	-0.105	0.070	0.116	216.806407	34.722197	-2348.28	717.21

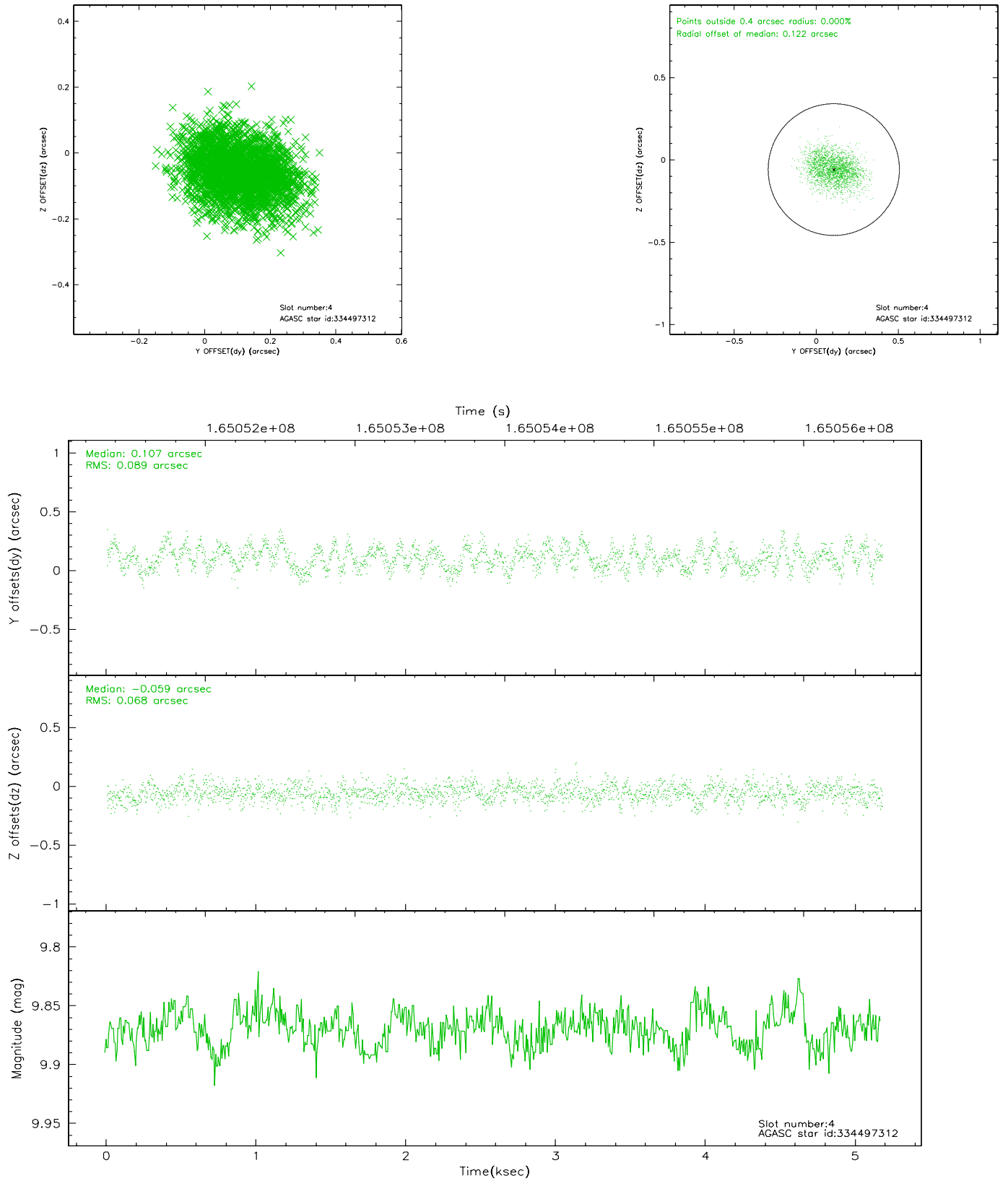


## 2.4 Star Slots

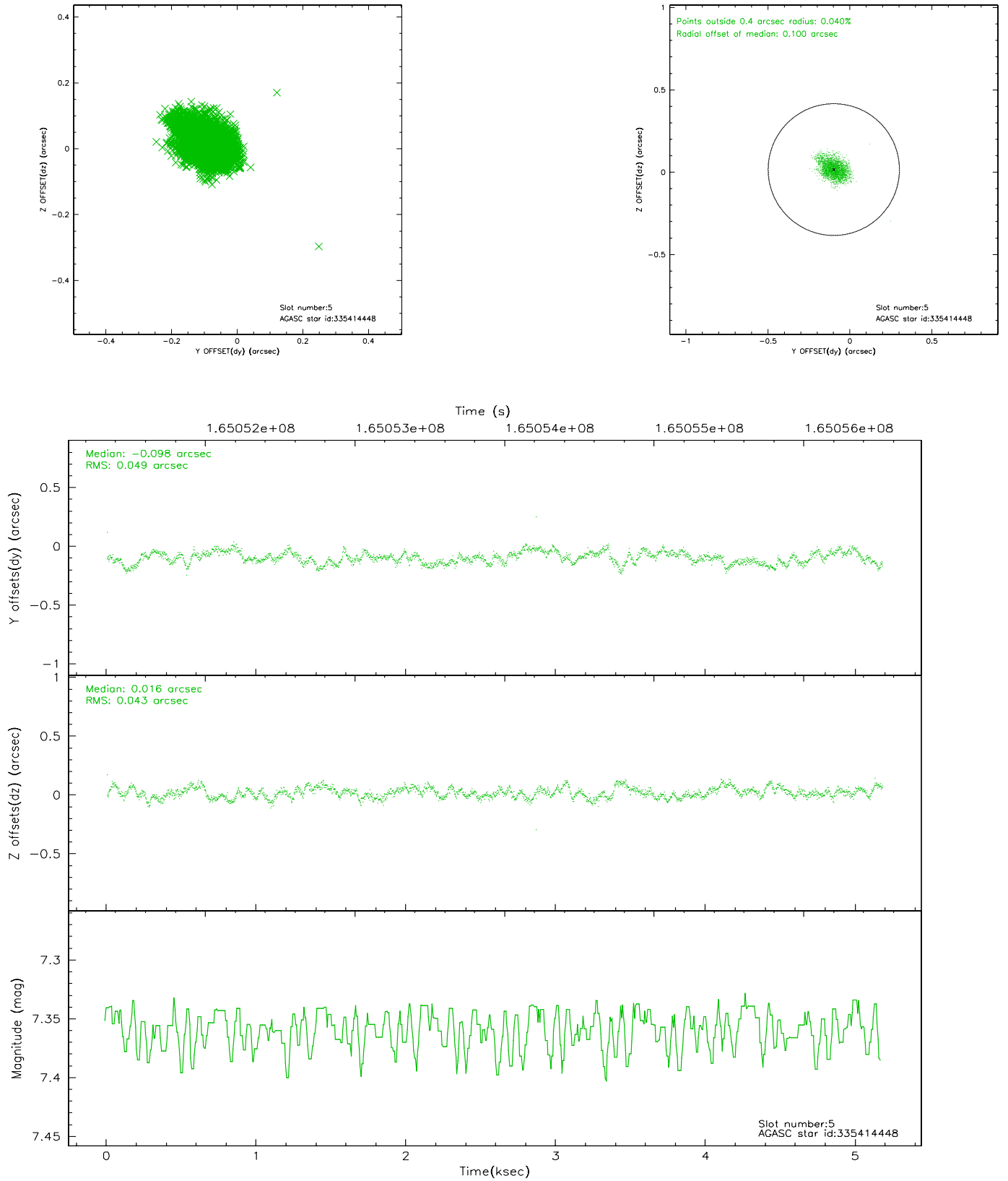
### 2.4.1 Slot 3



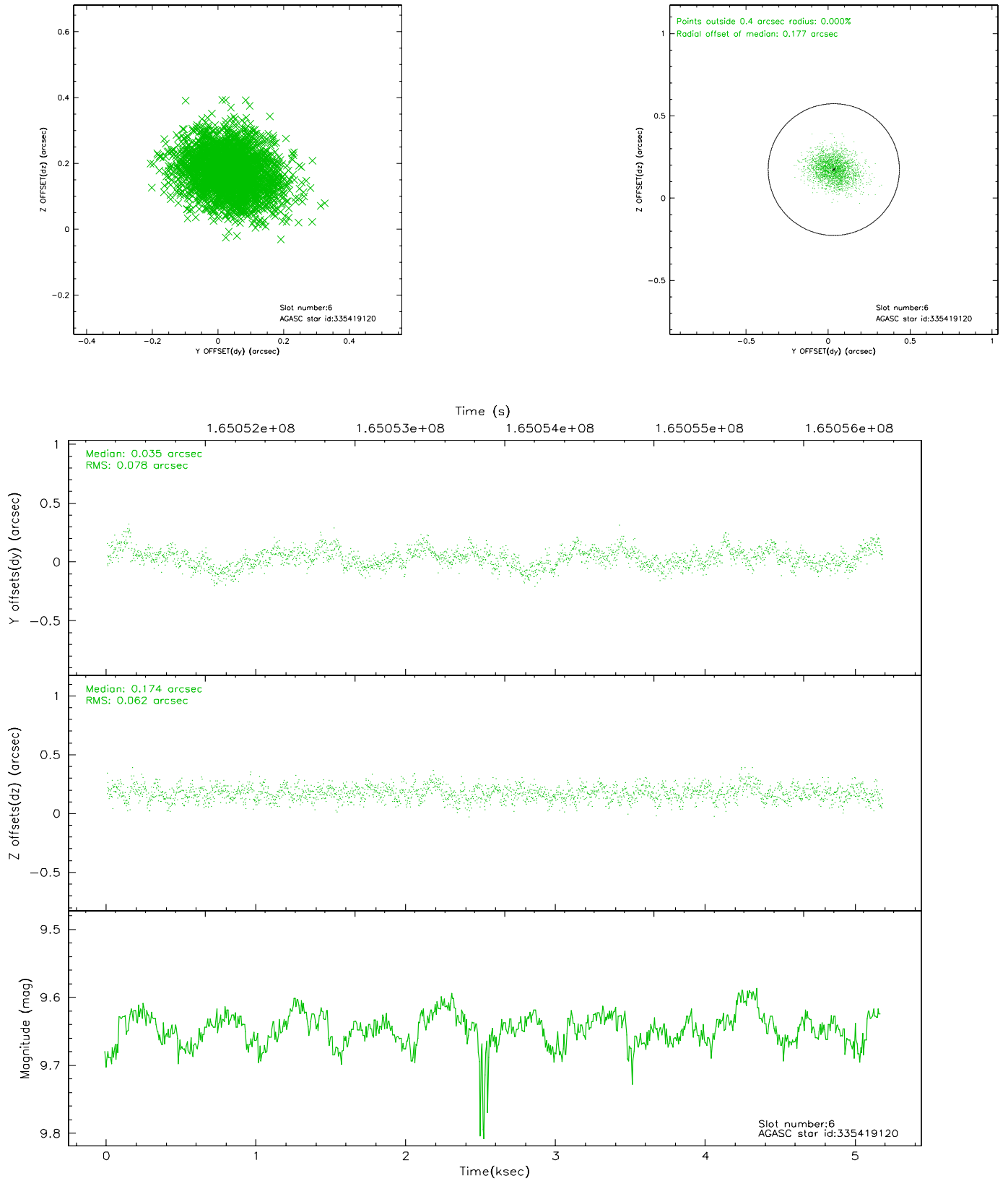
## 2.4.2 Slot 4



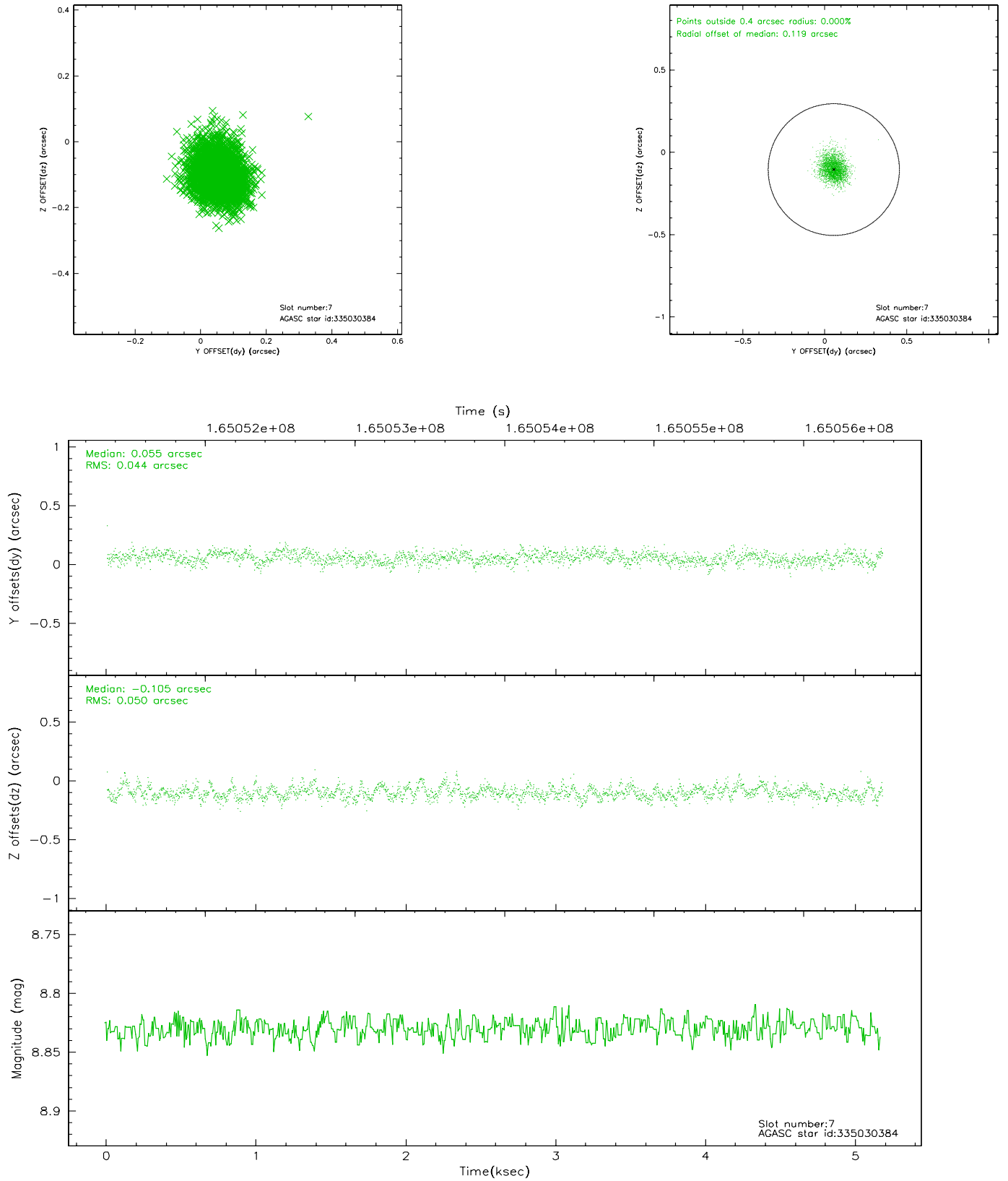
### 2.4.3 Slot 5



## 2.4.4 Slot 6

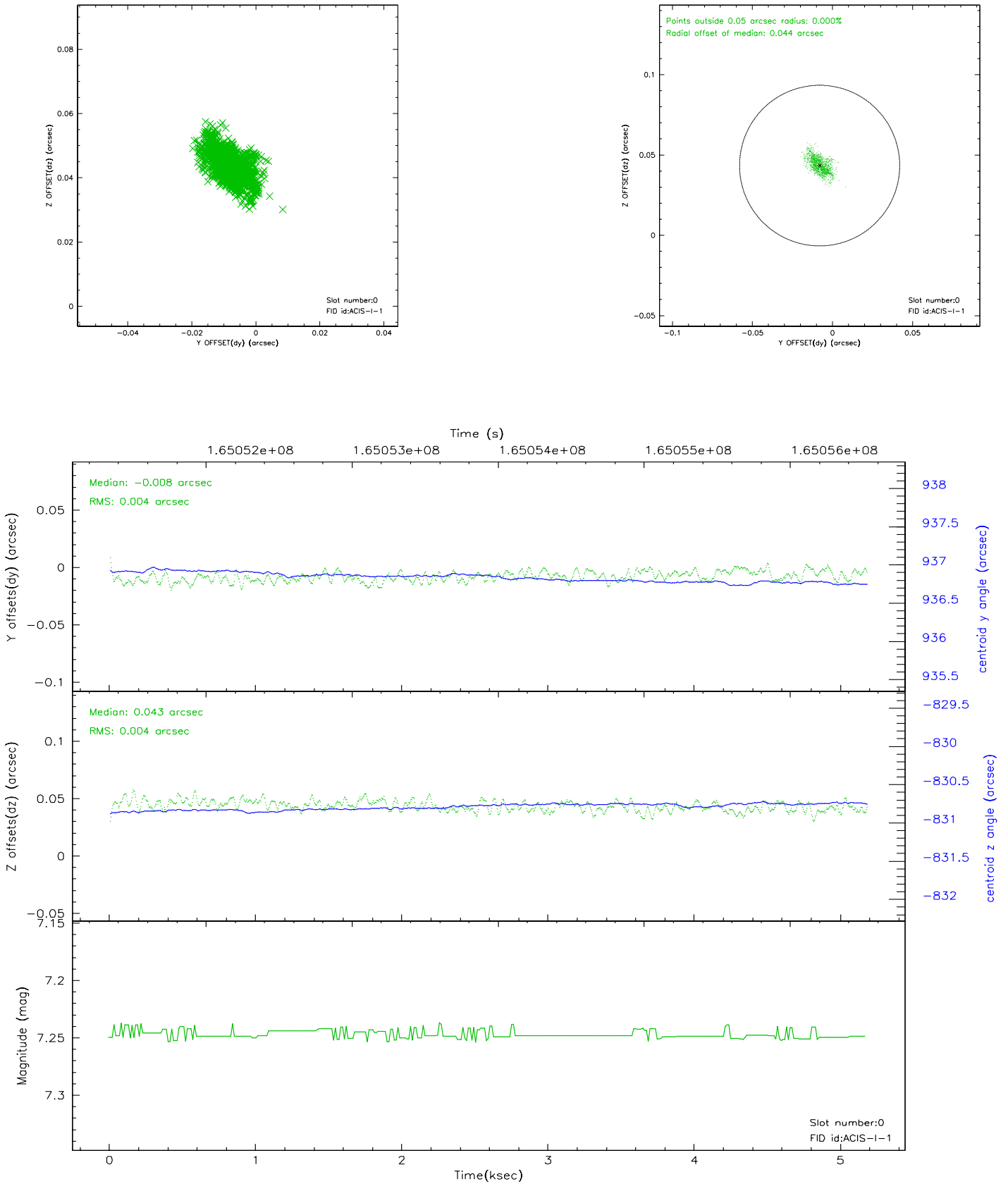


## 2.4.5 Slot 7

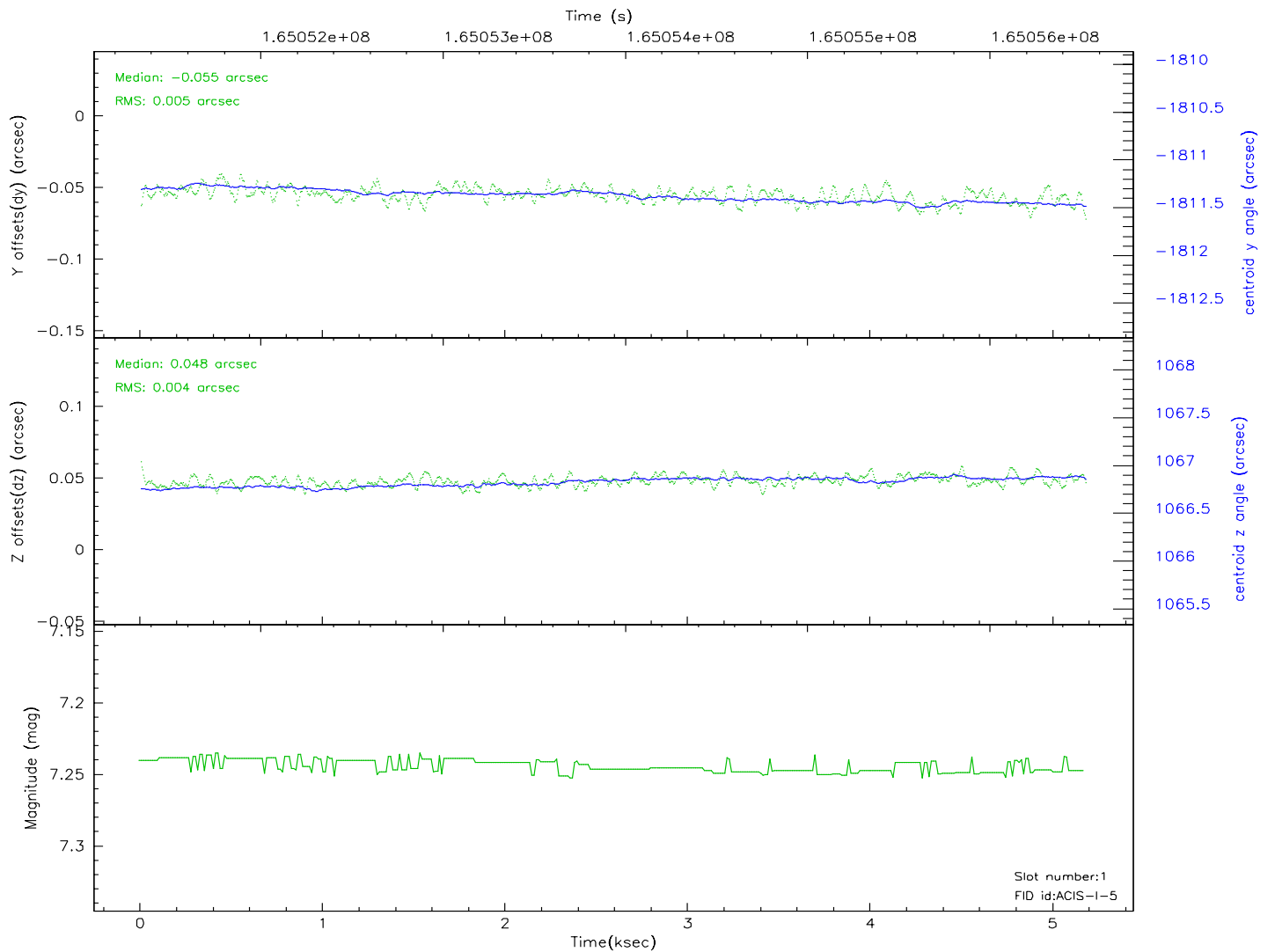
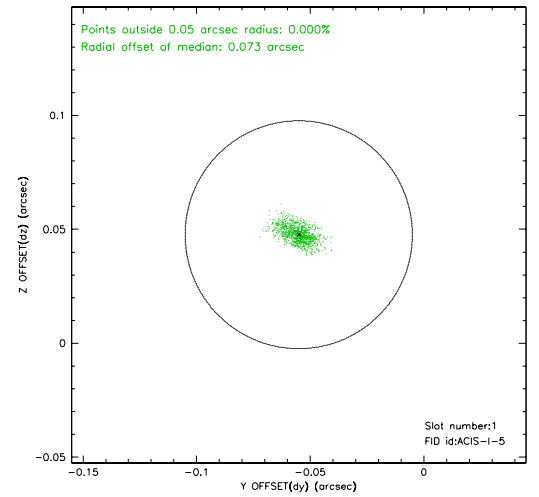
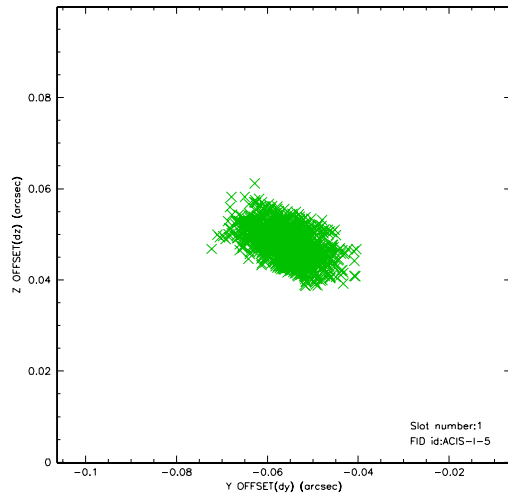


## 2.5 FID Slots

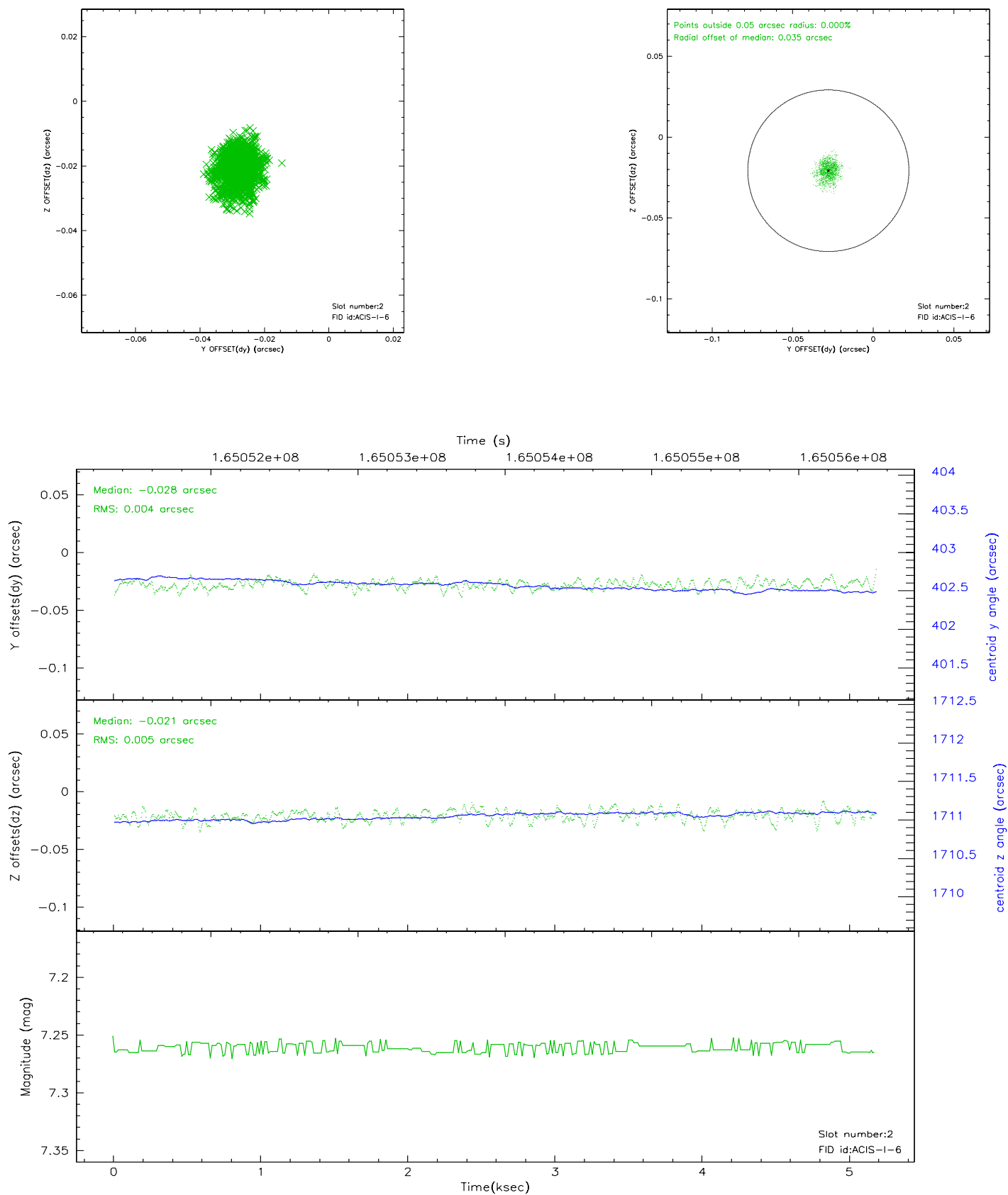
### 2.5.1 Slot 0



## 2.5.2 Slot 1

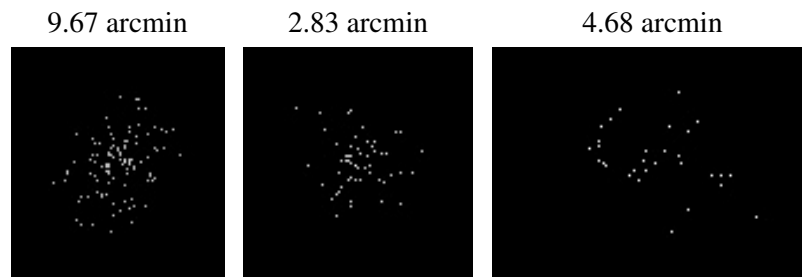


### 2.5.3 Slot 2





### 3 Point Sources



## A Summary

### A.1 Status

V&V Scientist	Beth Sundheim
V&V Date (YYYY-MM-DD)	2006.07.26
V&V Edition	1
V&V Disposition and Status	OK
V&V Charge Time	4.773

### A.2 Comments