

V&V Reference Report

L2 ASCDS Version : 8.4.5

Observation 3618 - L2 Version 3
Chandra X-Ray Center

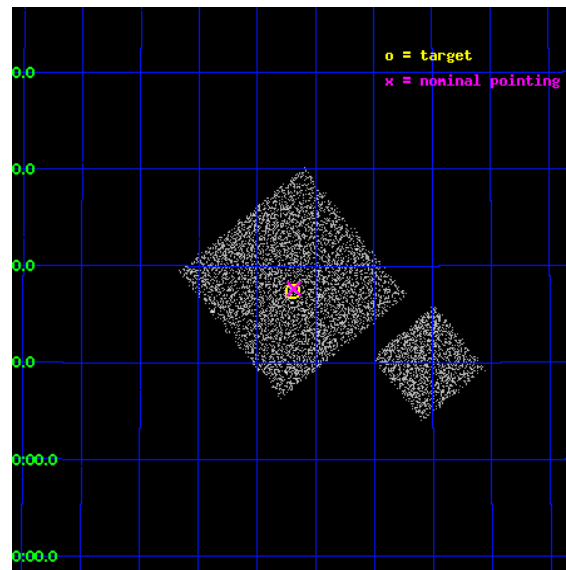
L2 Processing Date : Oct 26 2012

Contents

1	Front	2
2	OBI	3
2.1	OBI	3
2.1.1	Images	3
2.1.2	Bias	3
2.1.3	Parameters	4
2.1.4	Events	4
2.2	Compared Parameters	5
2.3	Aspect	6
2.4	Star Slots	9
2.4.1	Slot 3	9
2.4.2	Slot 4	10
2.4.3	Slot 5	11
2.4.4	Slot 6	12
2.4.5	Slot 7	13
2.5	FID Slots	14
2.5.1	Slot 0	14
2.5.2	Slot 1	15
2.5.3	Slot 2	16
A	Summary	17
A.1	Status	17
A.2	Comments	17

1 Front

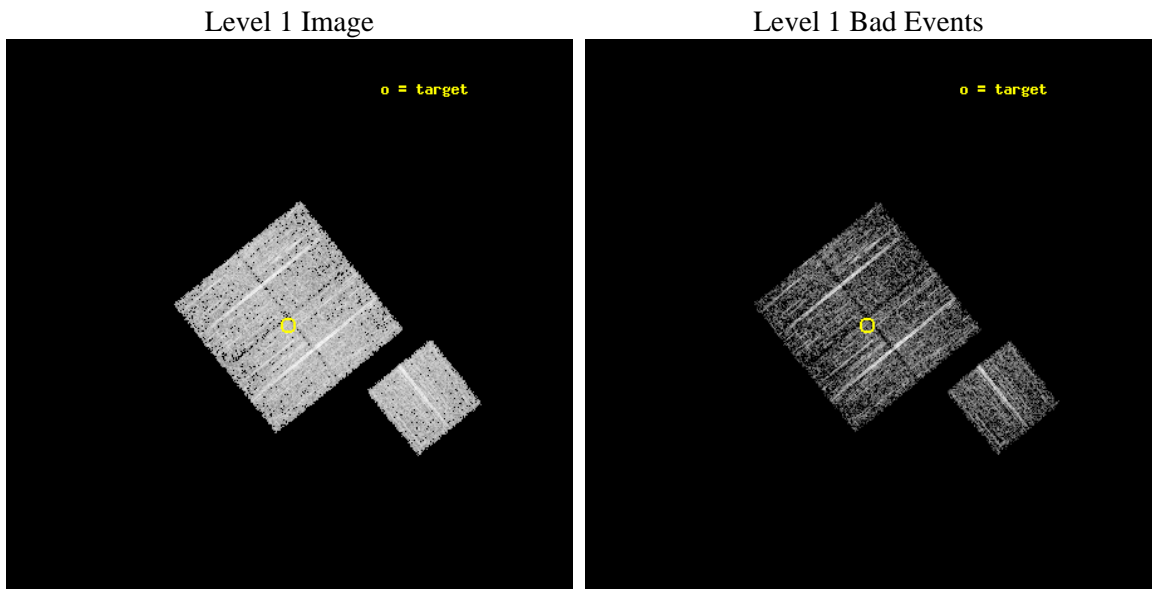
seq_num	900218	Sequence number
obs_id	3618	Observation id
title	CHANDRA LARGE SCALE SURVEY OF THE NOAO BOOTES DEEP FIELD	Proposal
observer	Dr. Stephen Murray	Principal investigator
object	NOAO FIELD F15	Source name
dtcycle	0	
cycle	P	events from which exps? Prim/Second/Both
ra_targ	217.17418	Observer's specified target RA [deg]
dec_targ	35.290164	Observer's specified target Dec [deg]
ra_nom	217.17148170074	Nominal RA [deg]
dec_nom	35.294208672636	Nominal Dec [deg]
roll_nom	141.01029817026	Nominal Roll [deg]
revision	3	Processing version of data
ontime	4575.4377973974	Sum of GTIs [s]
livetime	4515.6563341861	Livetime [s]
ontime0	4578.4556476176	Sum of GTIs [s]
ontime1	4578.4966876209	Sum of GTIs [s]
ontime2	4578.5377276242	Sum of GTIs [s]
ontime3	4575.4377973974	Sum of GTIs [s]
ontime6	4578.4146076143	Sum of GTIs [s]
l2events	9106	Number of level 2 events



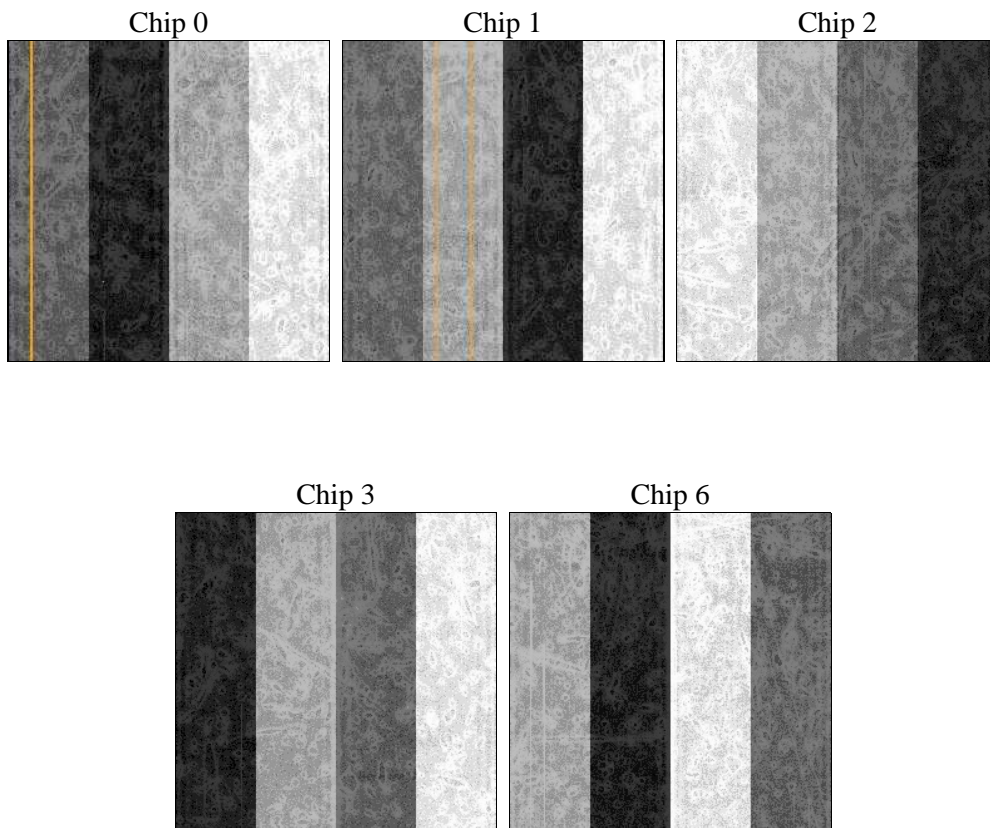
2 OBI

2.1 OBI

2.1.1 Images



2.1.2 Bias



2.1.3 Parameters

obi_num	1	Obi number	sched_exp_time	4800.000000	[s] Scheduled observation exposure time
ascdsver	8.4.5	Processing system revision	ontime	4575.4377973974	Sum of GTIs [s]
caldsver	4.5.2	 	ontime0	4578.4556476176	Sum of GTIs [s]
date	2012-10-26T00:16:35	Date and time of file creation	ontime1	4578.4966876209	Sum of GTIs [s]
revision	3	Processing version of data	ontime2	4578.5377276242	Sum of GTIs [s]
			ontime3	4575.4377973974	Sum of GTIs [s]
			ontime6	4578.4146076143	Sum of GTIs [s]
			l1events	112297	Number of level 1 events

2.1.4 Events

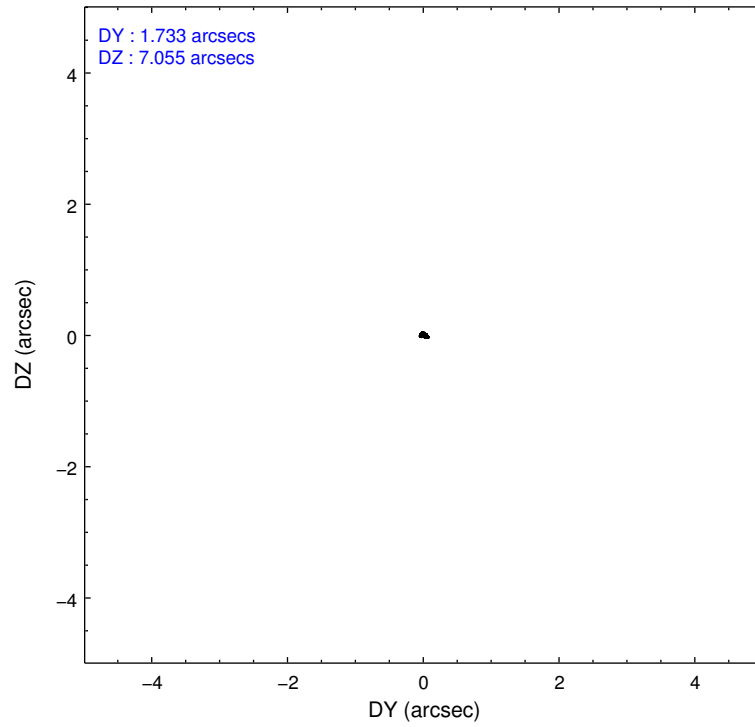
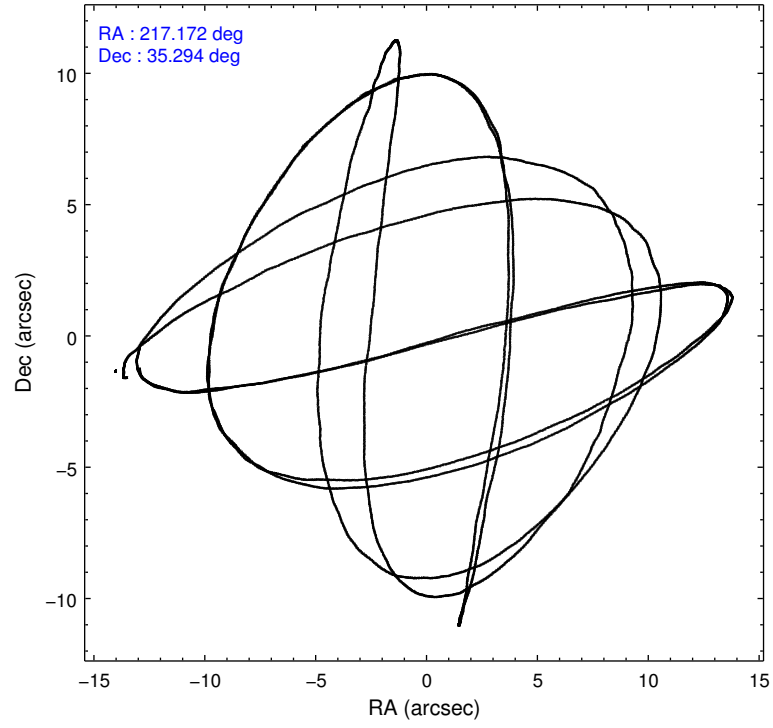
	ccd 0	ccd 1	ccd 2	ccd 3	ccd 6
level 1 events	21121	21334	24088	22897	22857
rejected events	18869	19064	21857	20783	20531
rejected %	89%	89%	90%	90%	89%

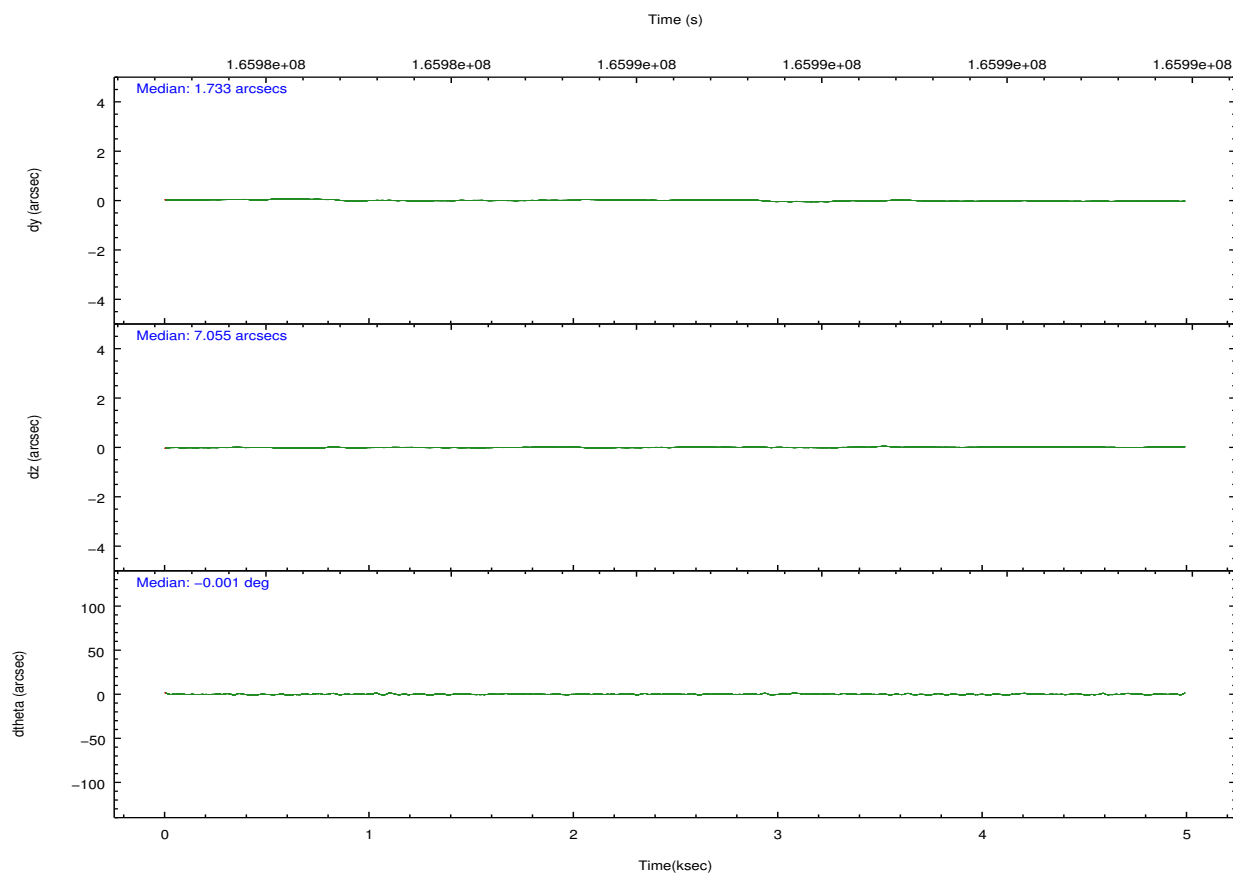
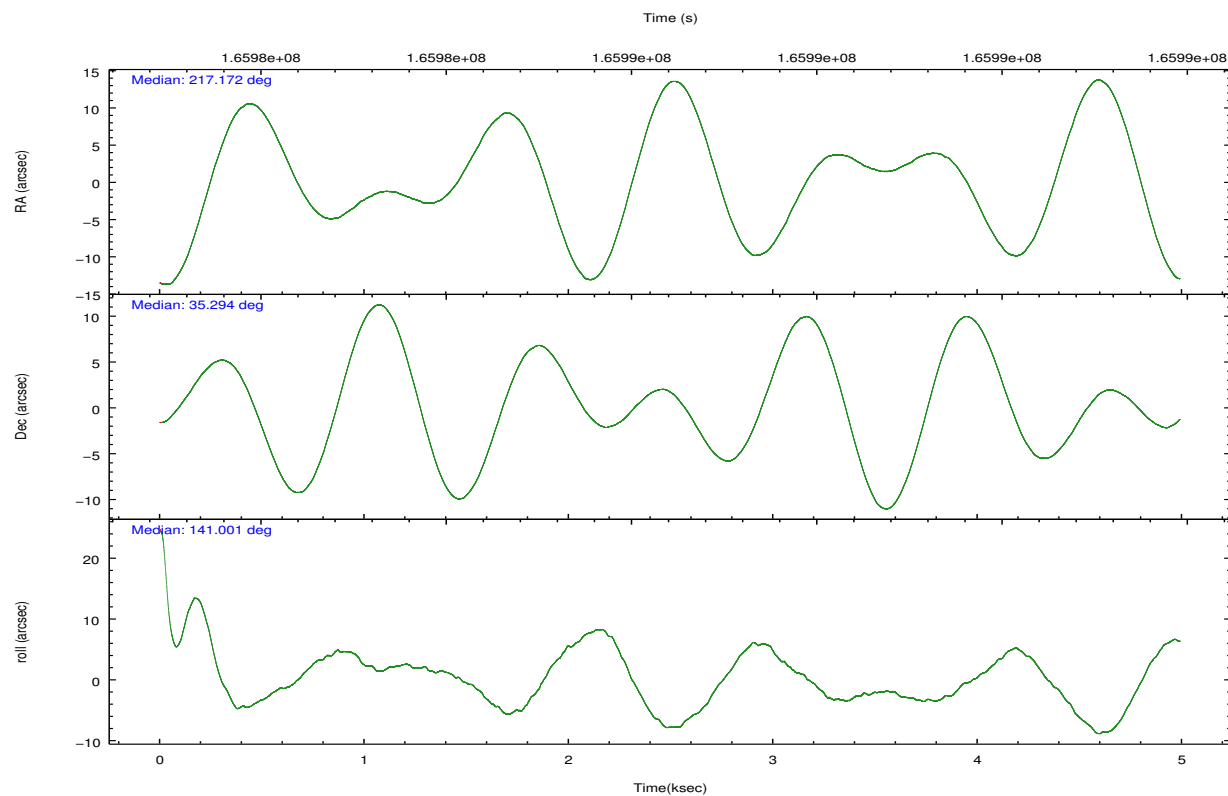
	ccd 0	ccd 1	ccd 2	ccd 3	ccd 6
grade 0 events	815	818	834	820	852
	3%	3%	3%	3%	3%
grade 1 events	13	11	7	11	10
	0%	0%	0%	0%	0%
grade 2 events	508	506	536	443	509
	2%	2%	2%	1%	2%
grade 3 events	281	245	256	213	284
	1%	1%	1%	0%	1%
grade 4 events	239	259	237	264	260
	1%	1%	0%	1%	1%
grade 5 events	658	715	584	732	760
	3%	3%	2%	3%	3%
grade 6 events	411	443	370	378	426
	1%	2%	1%	1%	1%
grade 7 events	18196	18337	21264	20036	19756
	86%	85%	88%	87%	86%

2.2 Compared Parameters

Parameter	Planned	Actual	Parameter	Planned	Actual
Instrument	ACIS	ACIS	Obspar format version number	7	7
Detector	ACIS-01236	ACIS-01236	Obspar file type	PREDICTED	ACTUAL
Grating	NONE	NONE	Obspar update status	NONE	UPDATED
Data mode	VFAINT	VFAINT	Number of optional ACIS chips dropped	0	0
Observation mode	POINTING	POINTING	On-chip summing requested	N	N
[deg] Pointing RA	217.204666	217.171481700744	Subarray requested	NONE	NONE
[deg] Pointing Dec	35.290084	35.29420867263603	Alternating exposures requested	N	N
[deg] Pointing Roll	140.782384	141.0102981702633	[s] Primary exposure time	0.000000	3.1
[mm] SIM focus pos	-0.782348	-0.7809083437167272			
[mm] SIM defocus	0	0.001439871863259334			
[mm] SIM translation stage pos	-233.592463	-233.5874344608287			
[mm] SIM translation stage offset	0	-0.005018542100998502			
[s] Observation start time (MET)	165983905.184000	165983529.77496			
Observation start date	2003-04-06T02:37:21	2003-04-06T02:32:09			
[s] Observation end time (MET)	165988705.184000	165988839.27518			
Observation end date	2003-04-06T03:57:21	2003-04-06T04:00:39			
Read mode	TIMED	TIMED			

2.3 Aspect



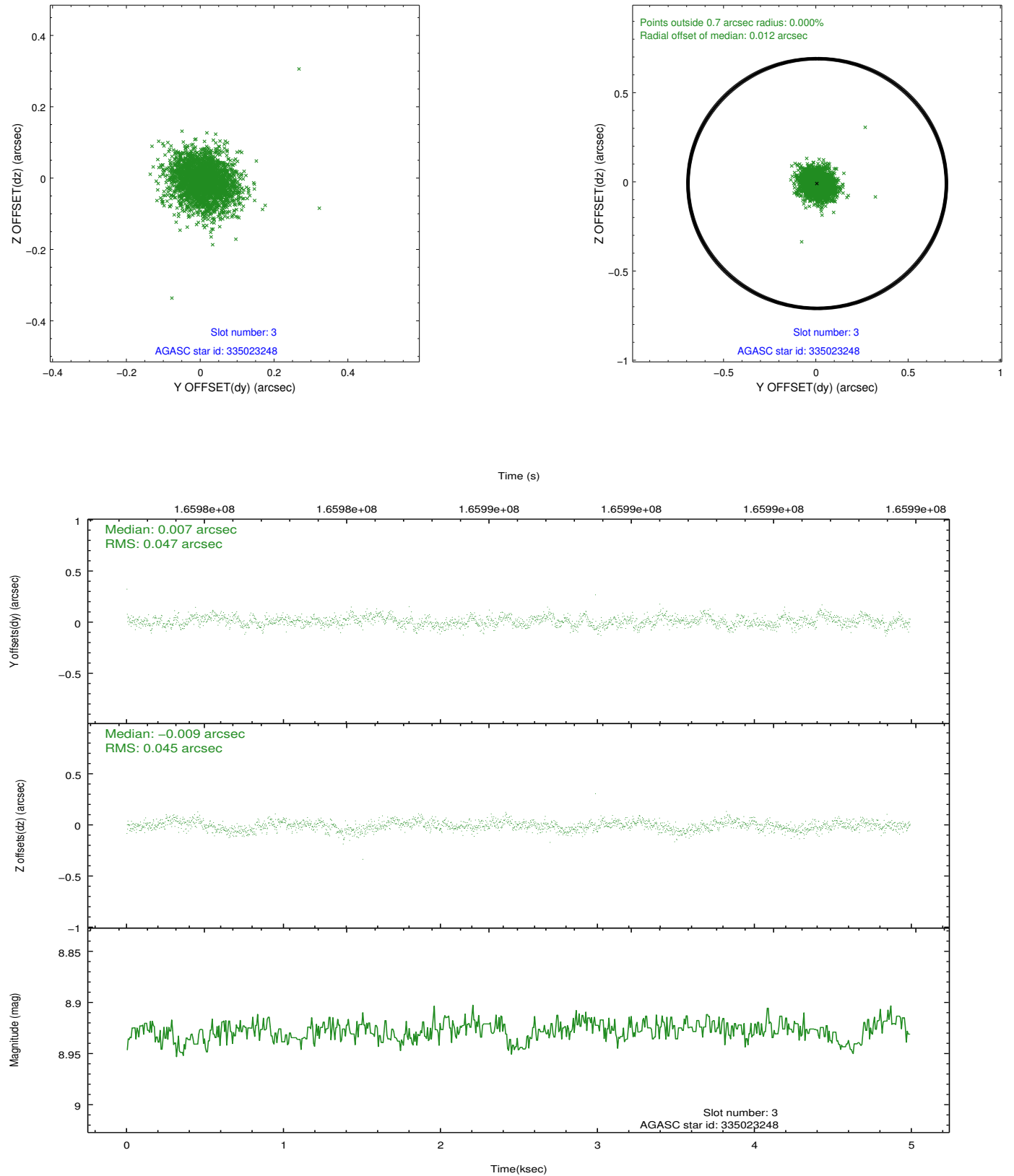


Slot Statistics

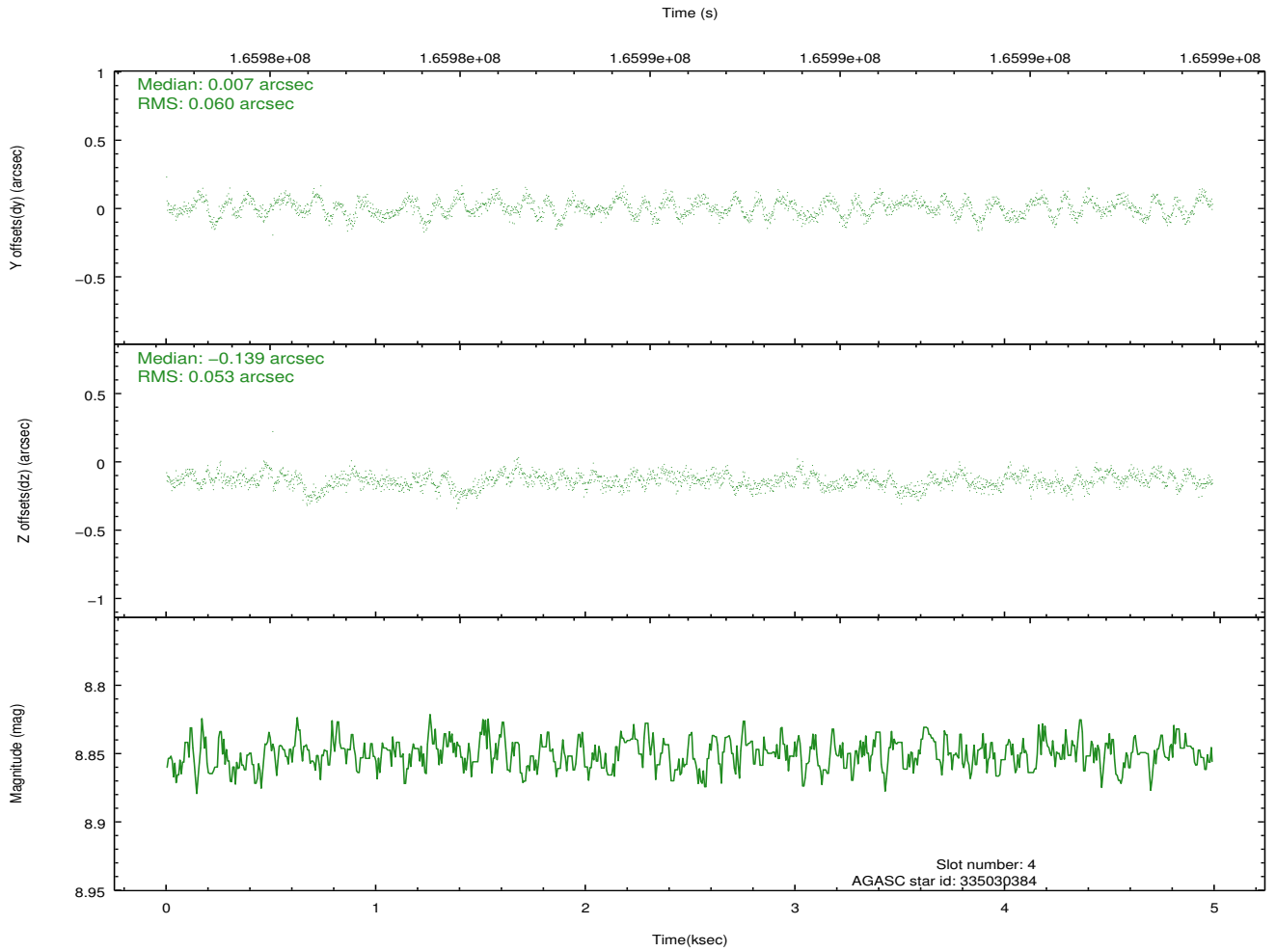
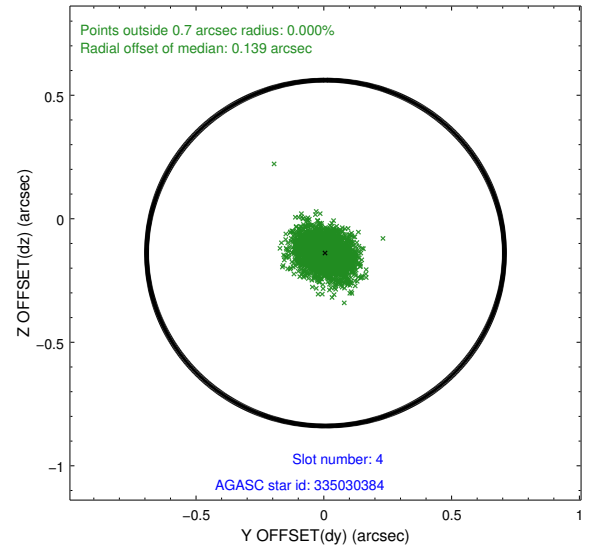
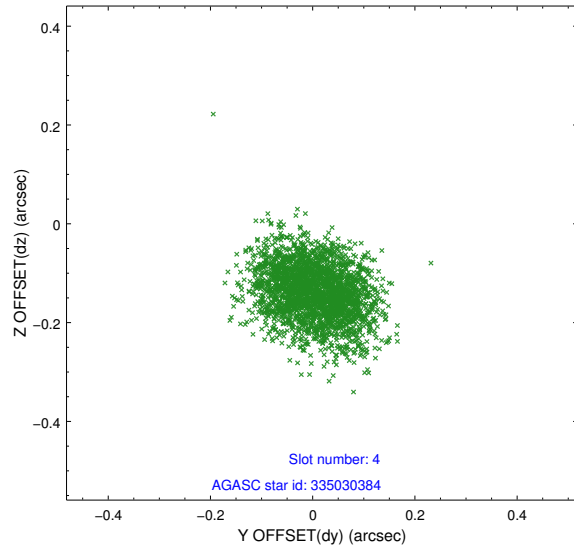
slot	status	id	mag	n_pts	med_dy	med_dz	dr1	dr2	ra	dec	mean_y	mean_z
0	FID	ACIS-I-1	7.25	1218	0.010	0.011	0.006	0.010	0.000000	0.000000	938.08	-830.46
1	FID	ACIS-I-5	7.24	1218	-0.077	0.054	0.006	0.010	0.000000	0.000000	-1809.39	1066.53
2	FID	ACIS-I-6	7.26	1218	-0.024	0.006	0.007	0.010	0.000000	0.000000	402.33	1712.31
3	GUIDE	335023248	8.93	2435	0.007	-0.009	0.068	0.110	217.634832	34.944512	-1768.16	158.90
4	GUIDE	335030384	8.85	2435	0.007	-0.139	0.086	0.137	216.806407	34.722197	-379.07	2327.12
5	GUIDE	335414448	7.36	2435	-0.112	0.070	0.067	0.104	216.992261	35.577204	1135.42	-406.70
6	GUIDE	335417968	9.39	2433	0.096	0.077	0.085	0.137	217.358149	35.055285	-883.98	368.49
7	GUIDE	335422272	9.43	2434	0.008	-0.012	0.161	0.259	217.586135	35.522660	-335.12	-1356.98

2.4 Star Slots

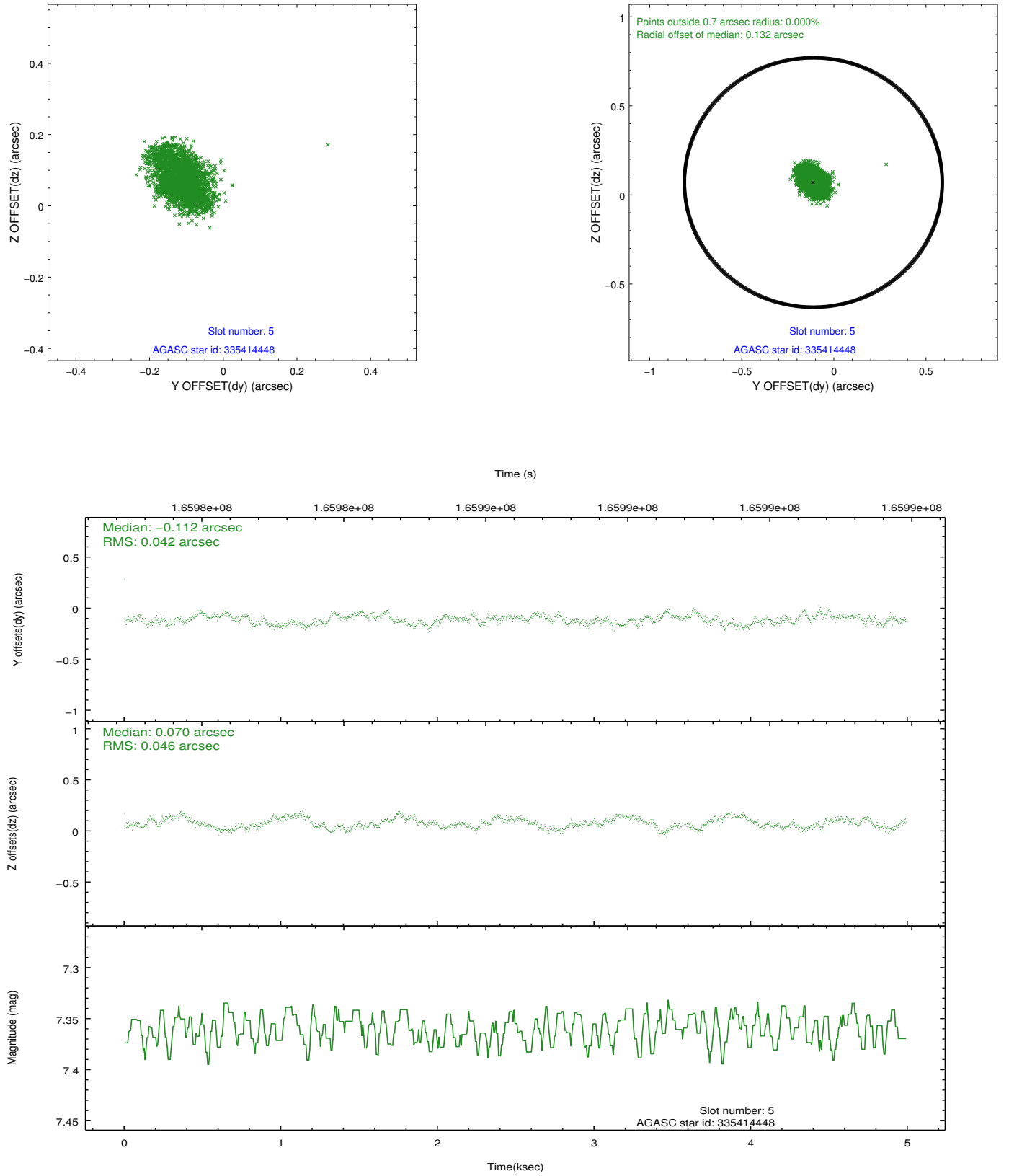
2.4.1 Slot 3



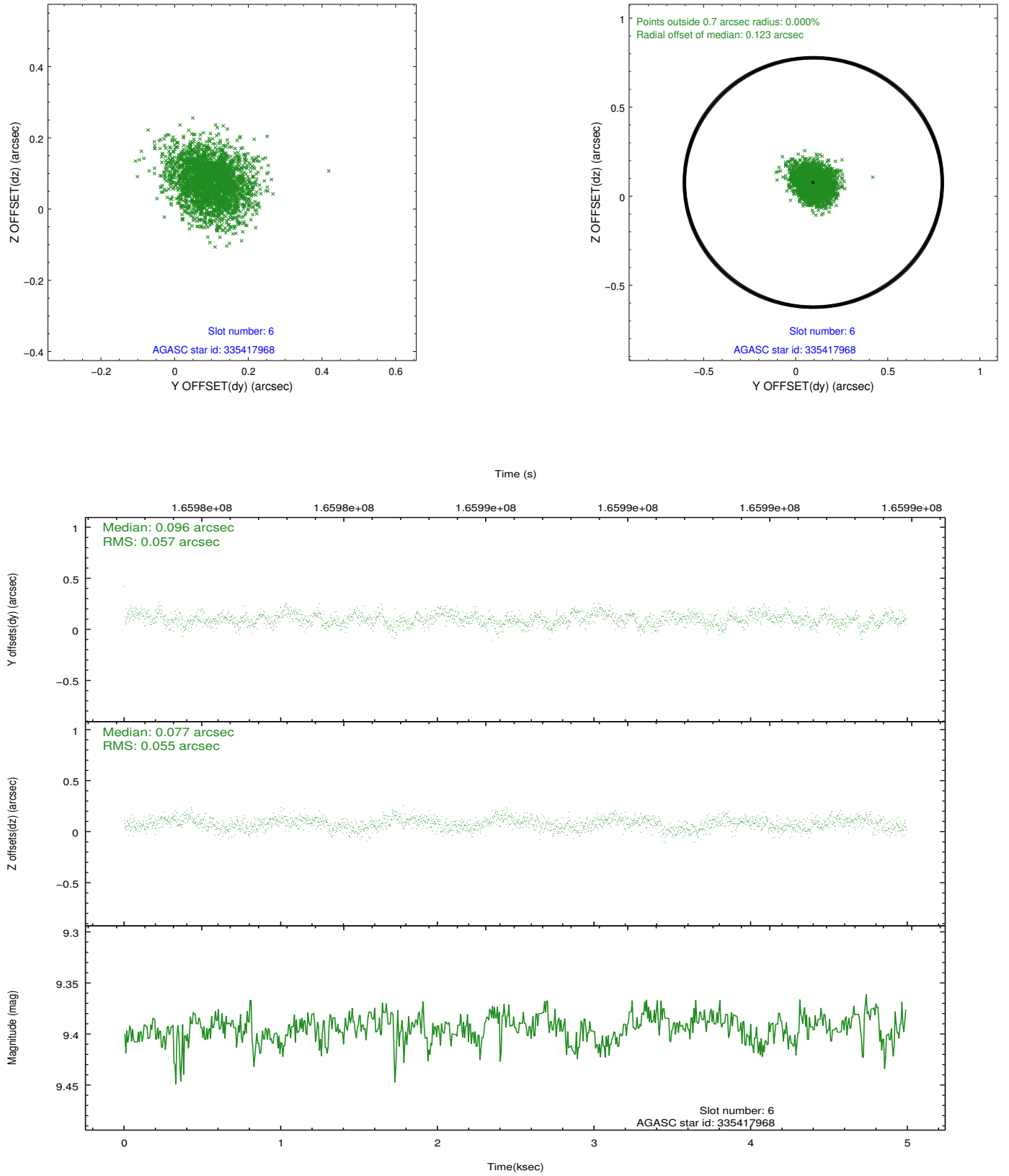
2.4.2 Slot 4



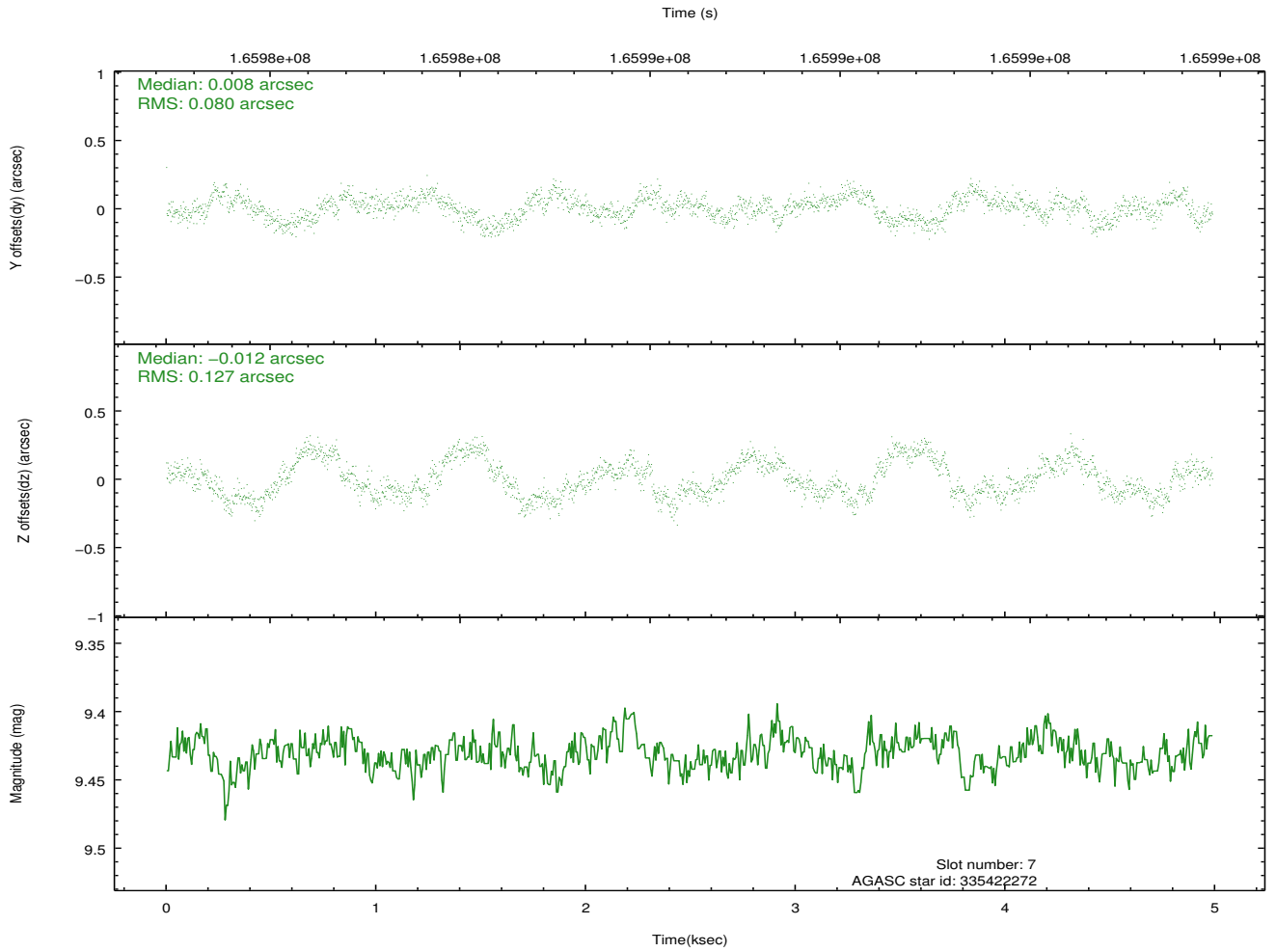
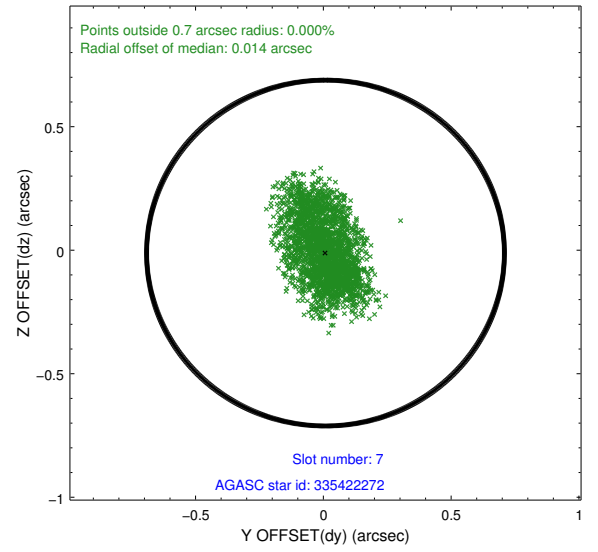
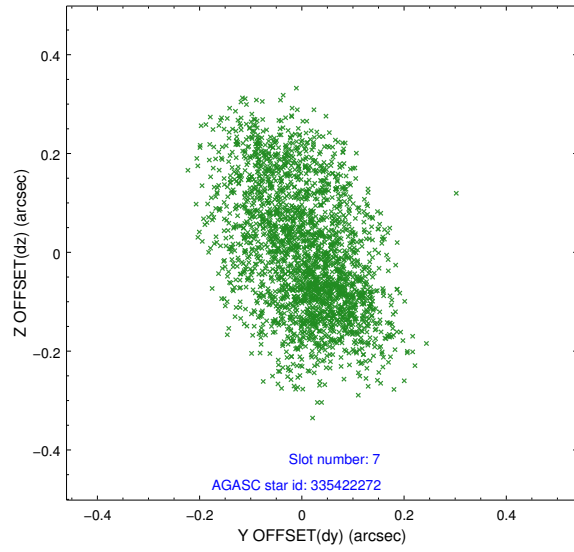
2.4.3 Slot 5



2.4.4 Slot 6

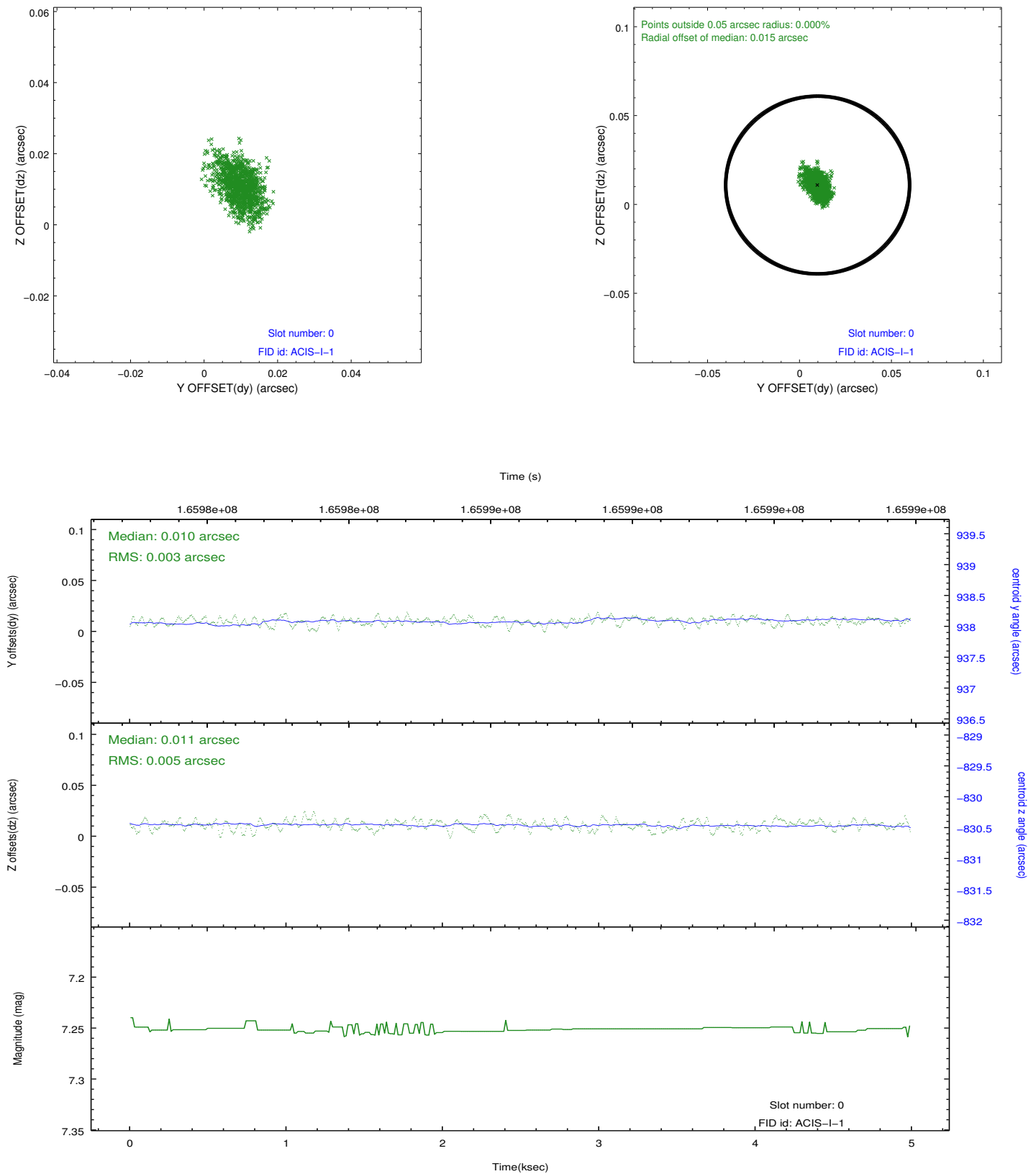


2.4.5 Slot 7

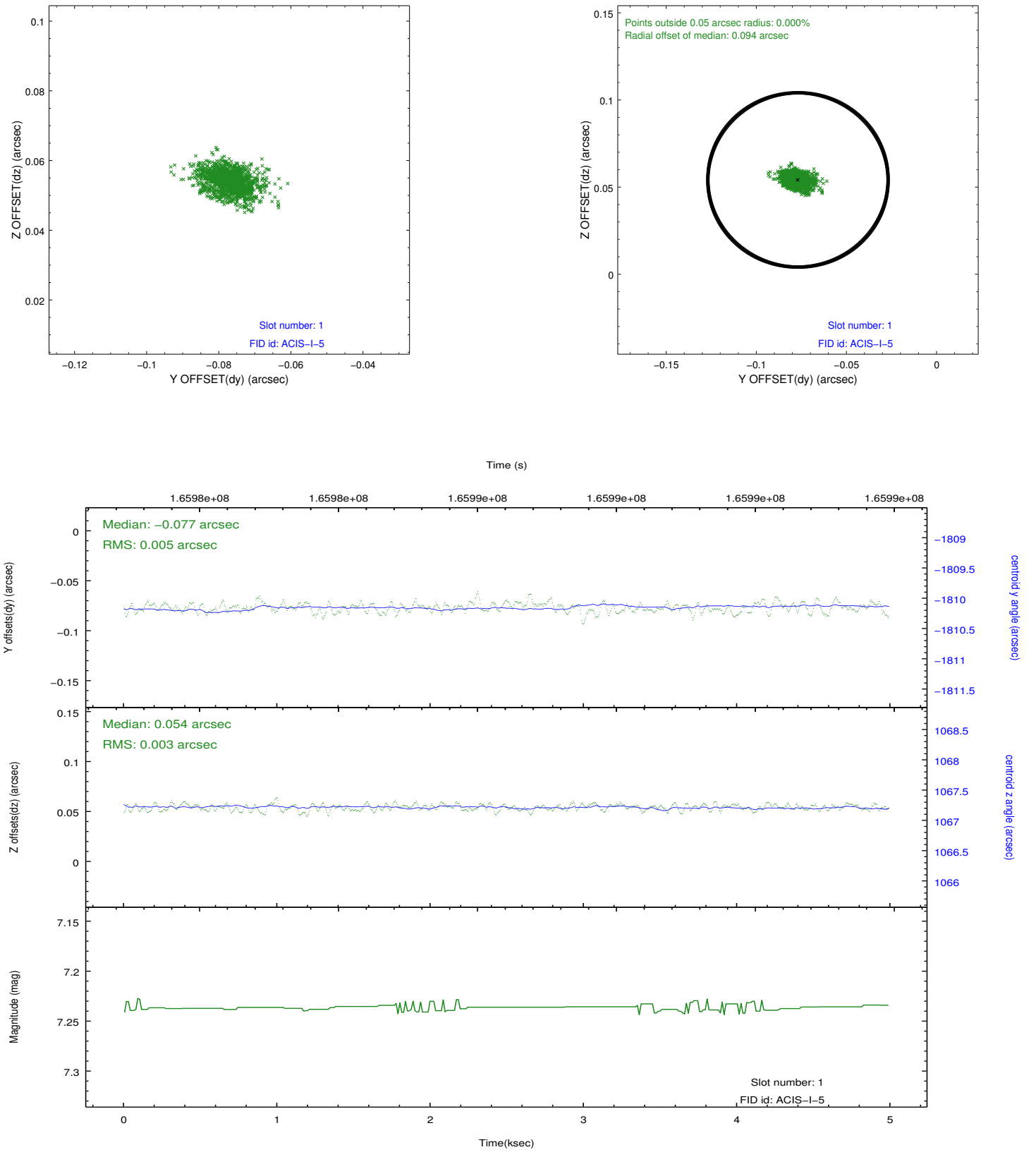


2.5 FID Slots

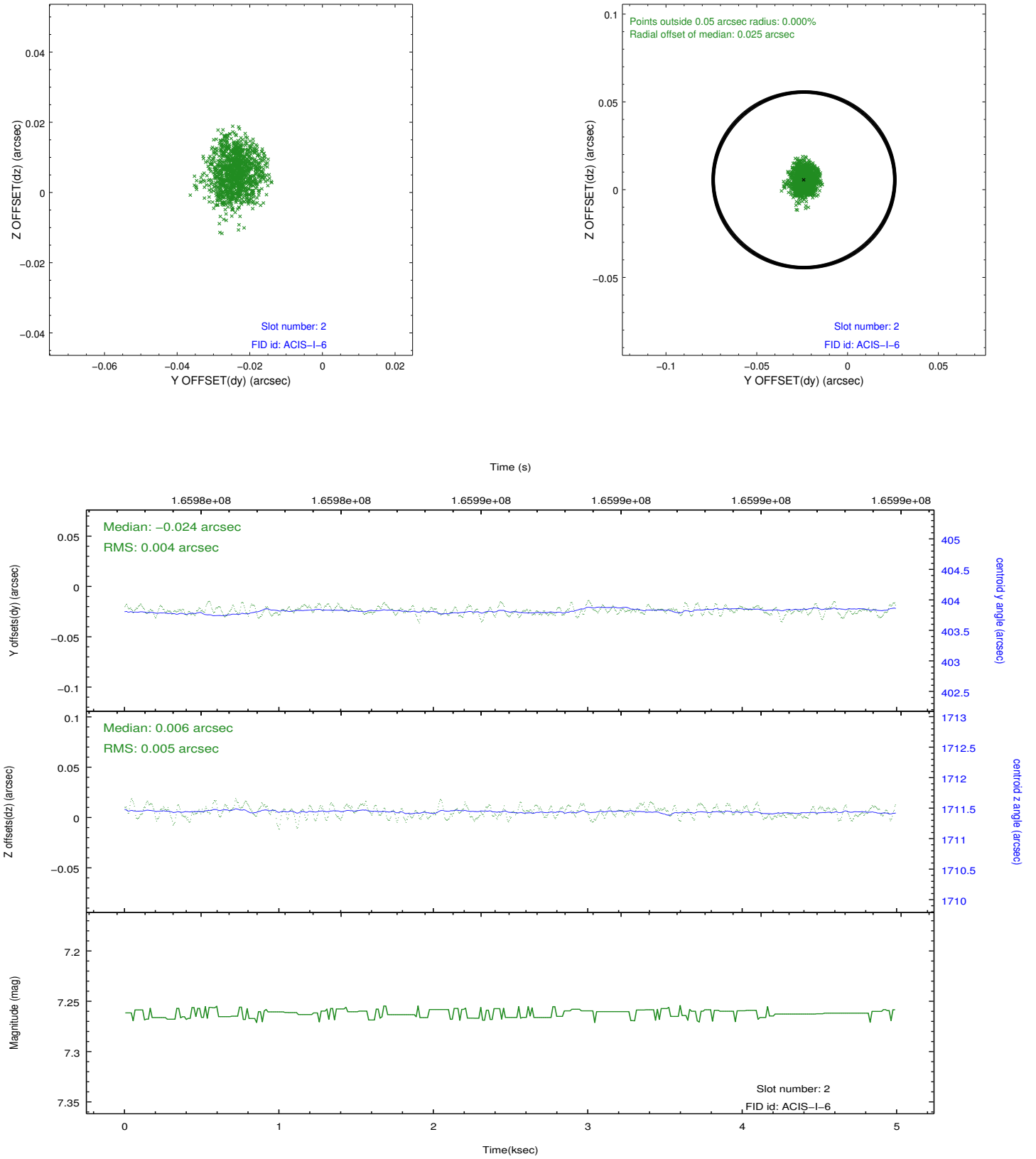
2.5.1 Slot 0



2.5.2 Slot 1



2.5.3 Slot 2



A Summary

A.1 Status

V&V Scientist	Jen Lauer
V&V Date (YYYY-MM-DD)	2012.11.13
V&V Edition	1
V&V Disposition and Status	OK
V&V Charge Time	4.575

A.2 Comments