

V&V Reference Report

L2 ASCDS Version : 7.6.8

Observation 3617 - L2 Version 001
Chandra X-Ray Center

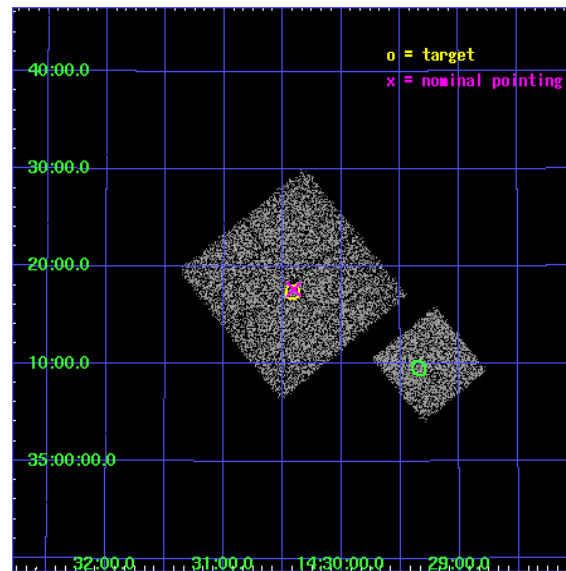
L2 Processing Date : Jul 30 2006

Contents

1	Front	2
2	OBI	3
2.1	OBI	3
2.1.1	Images	3
2.1.2	Bias	3
2.1.3	Parameters	4
2.1.4	Events	4
2.2	Compared Parameters	5
2.3	Aspect	6
2.4	Star Slots	9
2.4.1	Slot 3	9
2.4.2	Slot 4	10
2.4.3	Slot 5	11
2.4.4	Slot 6	12
2.4.5	Slot 7	13
2.5	FID Slots	14
2.5.1	Slot 0	14
2.5.2	Slot 1	15
2.5.3	Slot 2	16
3	Point Sources	17
A	Summary	18
A.1	Status	18
A.2	Comments	18

1 Front

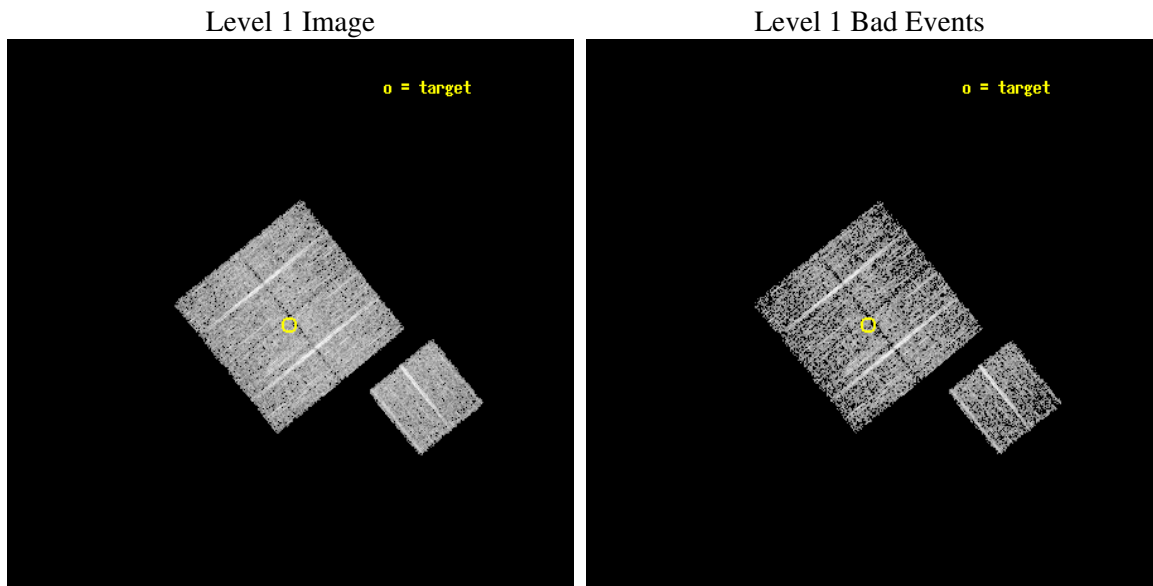
seq_num	900217
obs_id	3617
title	CHANDRA LARGE SCALE SURVEY OF THE NOAO BOOTES DEEP FIELD
observer	Dr. Stephen Murray
object	NOAO FIELD F26
dtcycle	0
cycle	P
ra_targ	217.604097
dec_targ	35.290164
ra_nom	217.60127700897
dec_nom	35.294251384113
roll_nom	141.01031181283
revision	2
ontime	4290.3999917507
livetime	4234.342757312
ontime0	4290.3999917507
ontime1	4287.2590214908
ontime2	4290.3999917507
ontime3	4290.3999917507
ontime6	4290.3999917507
l2events	17986



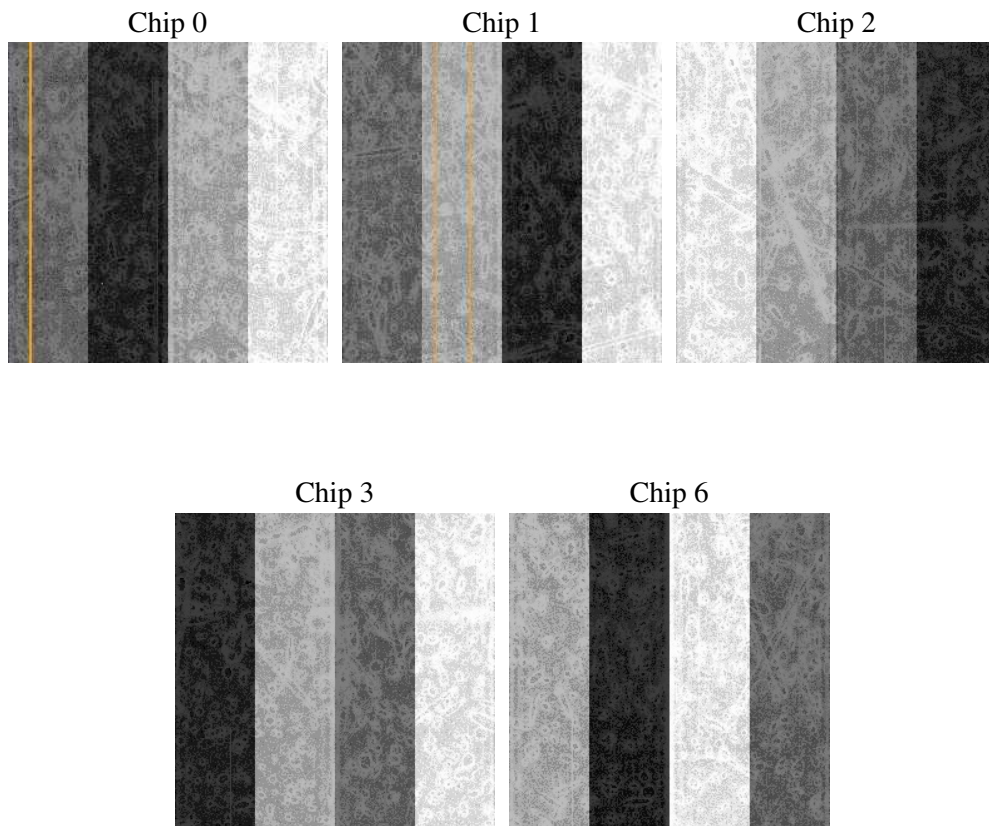
2 OBI

2.1 OBI

2.1.1 Images



2.1.2 Bias



2.1.3 Parameters

obi_num	1
ascdsver	7.6.8
caldbver	3.2.2
date	2006-07-30T08:55:01
revision	2

sched_exp_time	4511.007000
ontime	4293.7518912554
ontime0	4293.7518912554
ontime1	4290.6109707952
ontime2	4293.7518912554
ontime3	4293.7518912554
ontime6	4293.7518912554
l1events	118645

2.1.4 Events

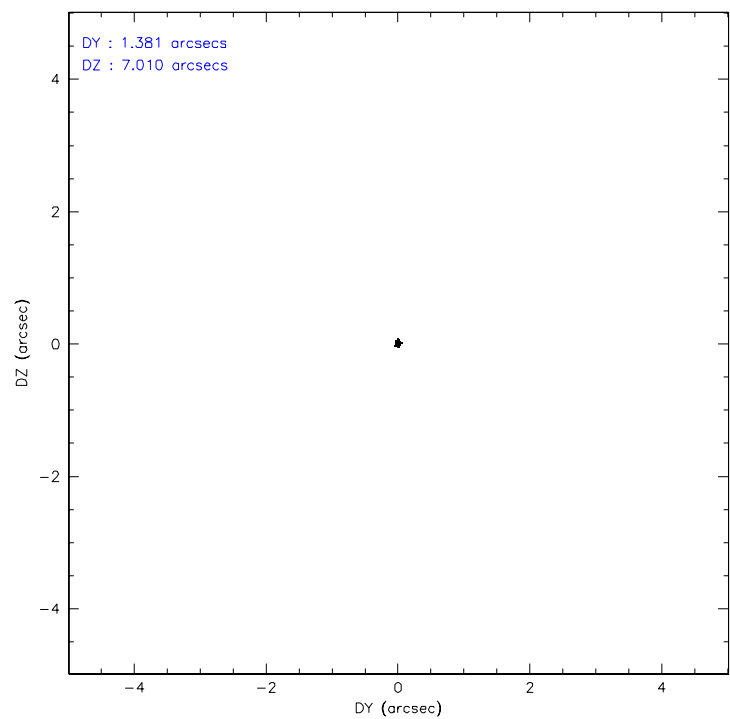
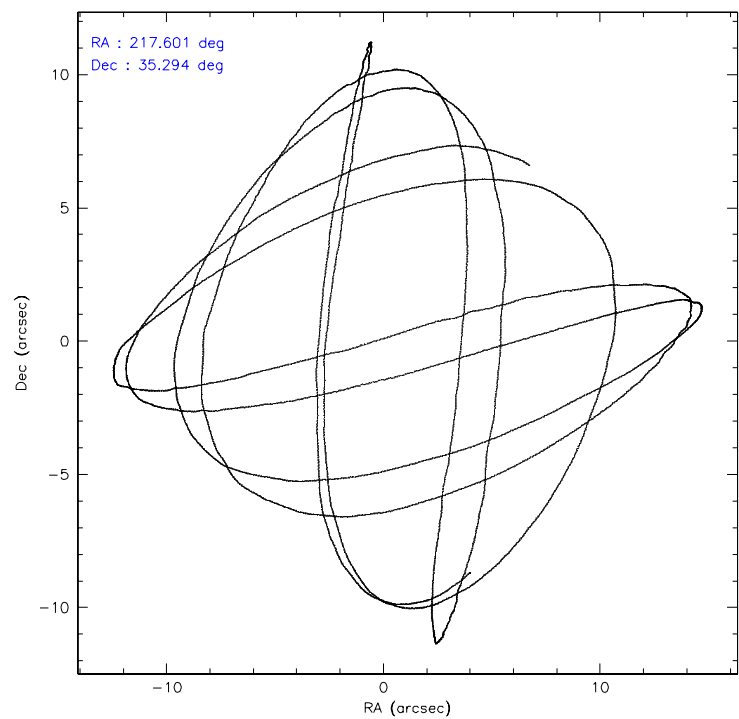
	ccd 0	ccd 1	ccd 2	ccd 3	ccd 6
level 1 events	22423	22217	25984	24587	23434
rejected events	18346	18207	22014	20668	18940
rejected %	81%	81%	84%	84%	80%

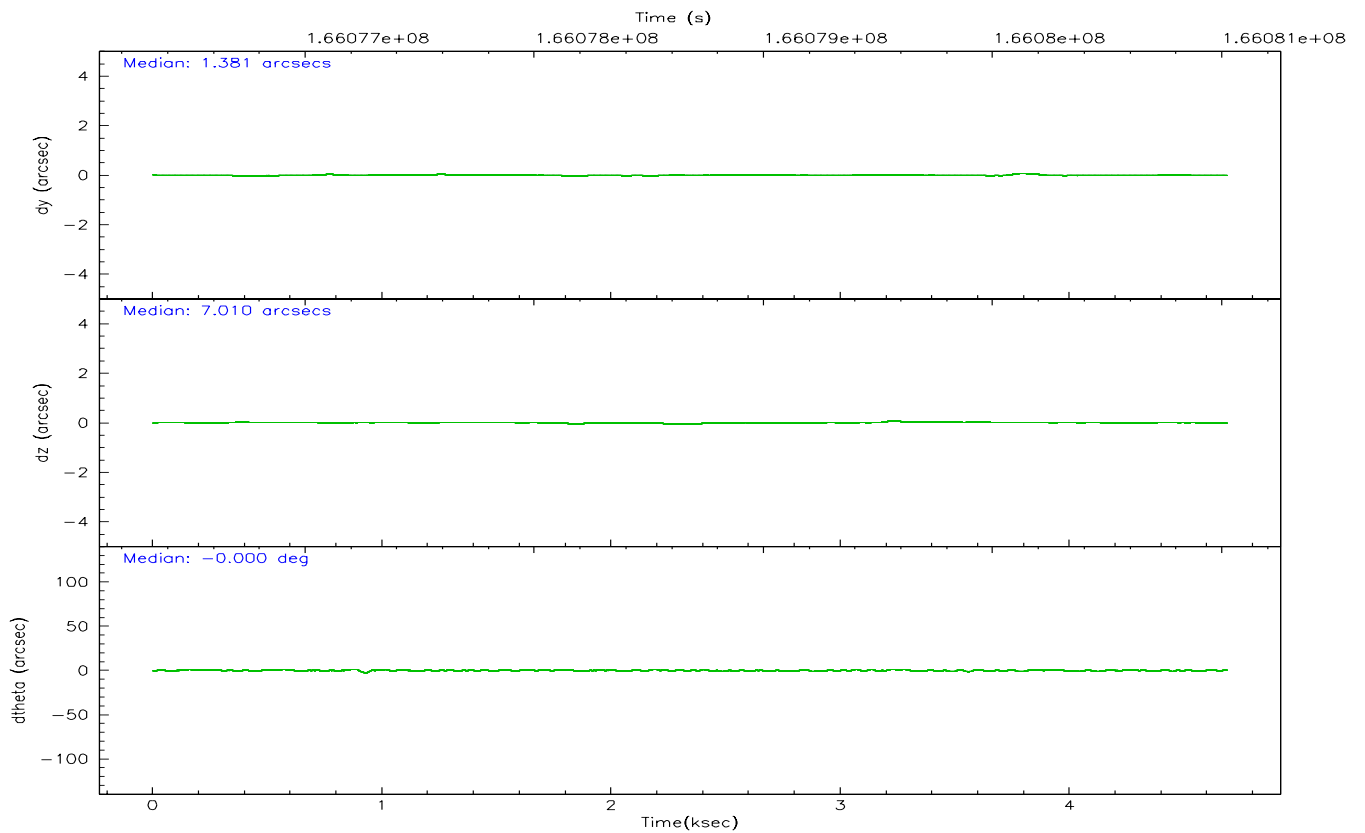
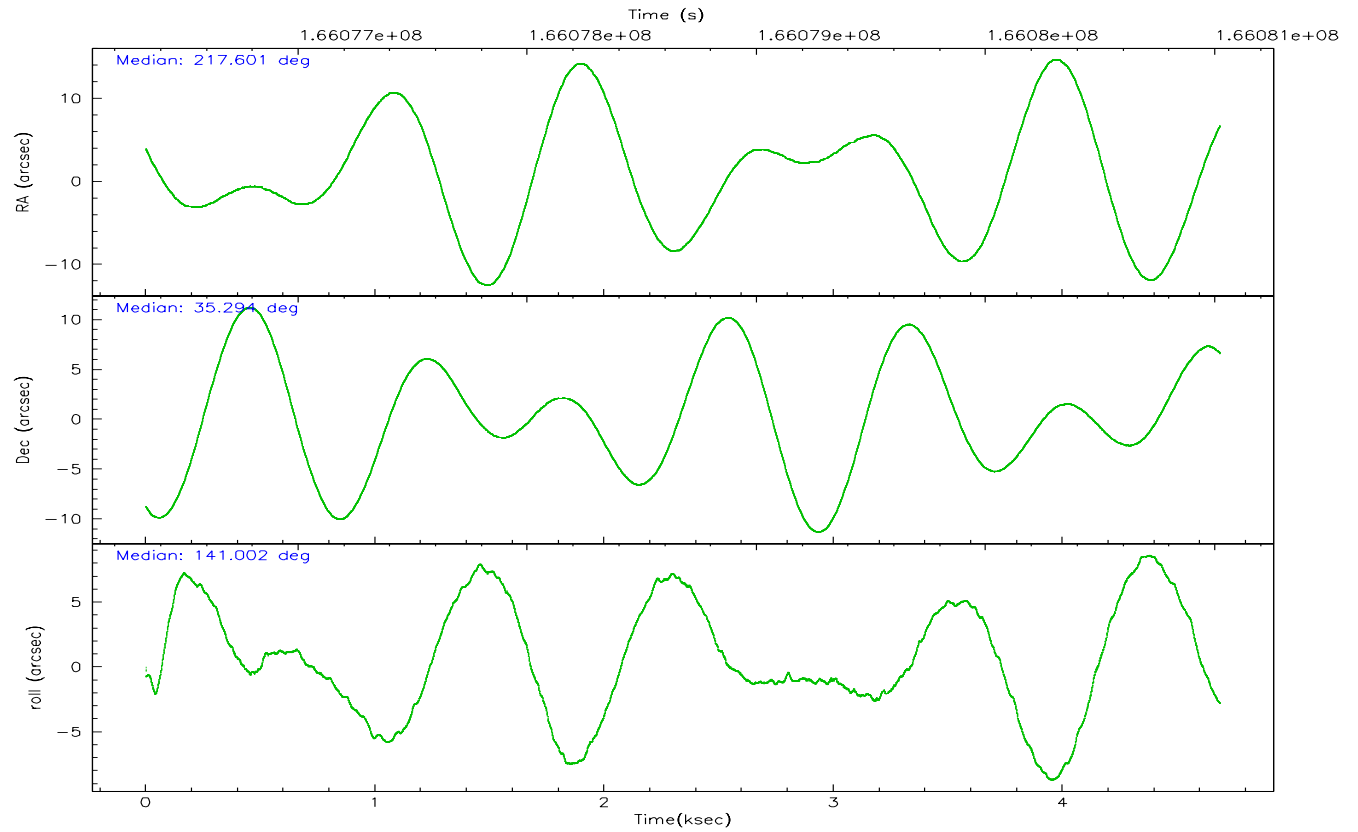
	ccd 0	ccd 1	ccd 2	ccd 3	ccd 6
grade 0 events	2136	2128	2178	2088	2499
	9%	9%	8%	8%	10%
grade 1 events	21	16	18	21	15
	0%	0%	0%	0%	0%
grade 2 events	727	680	691	612	708
	3%	3%	2%	2%	3%
grade 3 events	335	347	296	304	311
	1%	1%	1%	1%	1%
grade 4 events	317	295	315	322	330
	1%	1%	1%	1%	1%
grade 5 events	606	682	569	719	704
	2%	3%	2%	2%	3%
grade 6 events	565	562	492	595	652
	2%	2%	1%	2%	2%
grade 7 events	17716	17507	21425	19926	18215
	79%	78%	82%	81%	77%

2.2 Compared Parameters

Parameter	Planned	Actual	Parameter	Planned	Actual
Instrument	ACIS	ACIS	Obspar format version number	6	6
Detector	ACIS-01236	ACIS-01236	Obspar file type	PREDICTED	ACTUAL
Grating	NONE	NONE	Obspar update status	NONE	UPDATED
Data mode	VFAINT	VFAINT	On-chip summing requested	N	N
Observation mode	POINTING	POINTING	Subarray requested	NONE	NONE
Pointing RA	217.634576	217.6012770089706	Alternating exposures requested	N	N
Pointing Dec	35.290091	35.29425138411337	Primary exposure time	0.000000	3.1
Pointing Roll	140.782394	141.0103118128294			
SIM focus pos (mm)	-0.782348	-0.7809083437167272			
SIM defocus (mm)	0	0.001439871863259334			
SIM translation stage pos (mm)	-233.592463	-233.5874344608287			
SIM translation stage offset (mm)	0	-0.005018542100998502			
Observation start time	166076515.184000	166076139.55387			
Observation start date	2003-04-07T04:20:51	2003-04-07T04:15:39			
Observation end time	166081026.184000	166081340.91659			
Observation end date	2003-04-07T05:36:02	2003-04-07T05:42:20			
Read mode	TIMED	TIMED			

2.3 Aspect



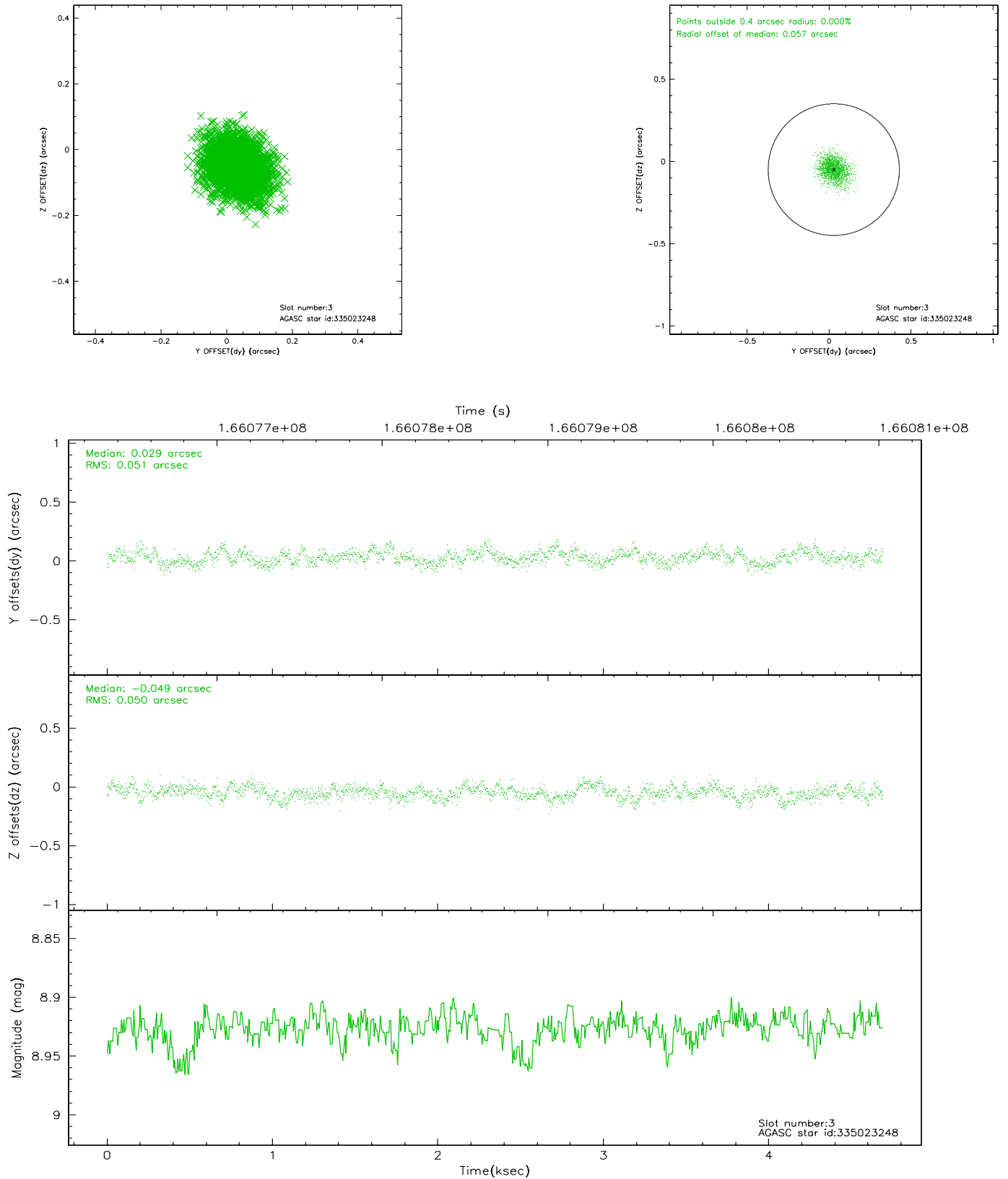


Slot Statistics

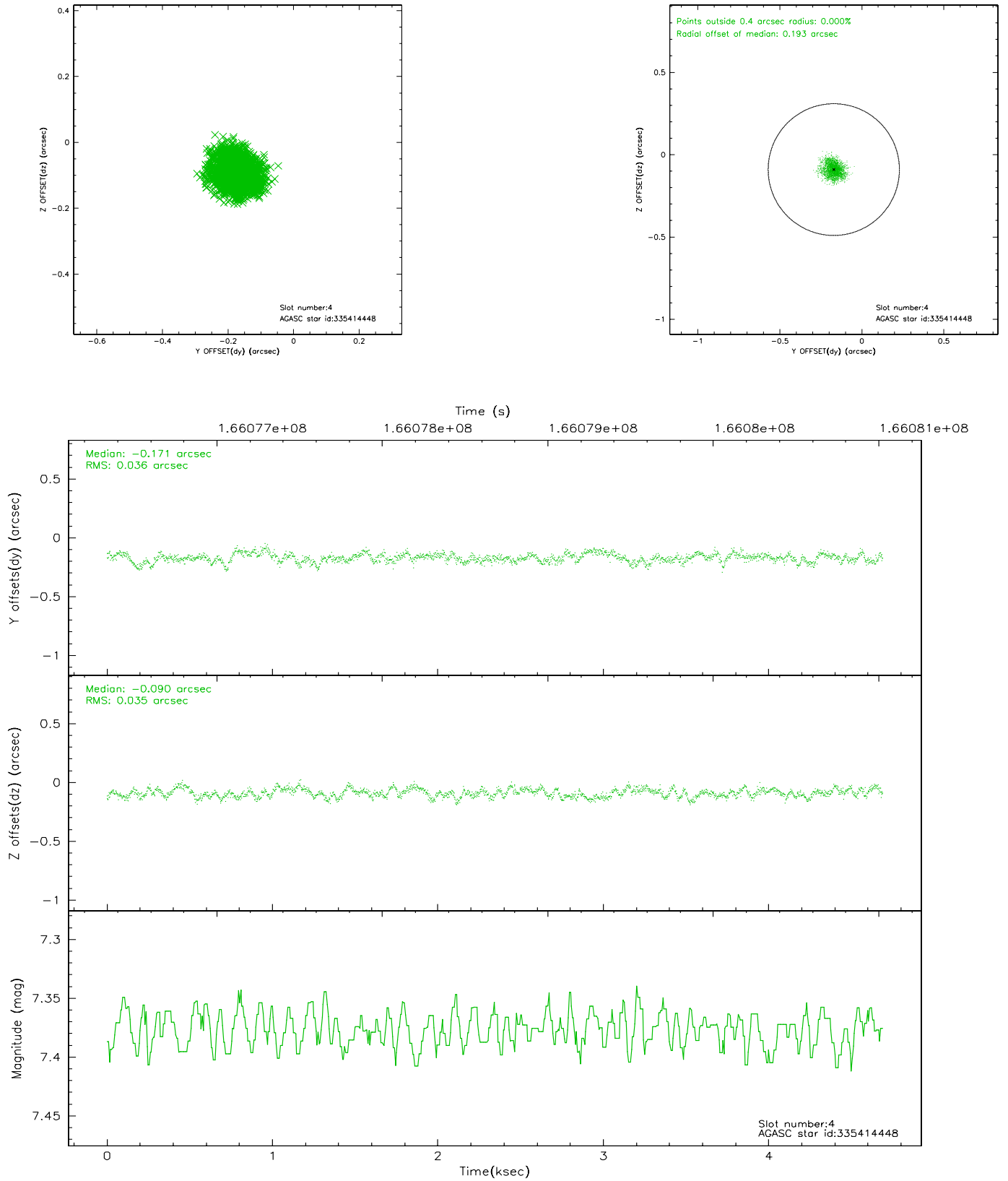
slot	status	id	mag	n_pts	med_dy	med_dz	dr1	dr2	ra	dec	mean_y	mean_z
0	FID	ACIS-I-1	7.25	1144	-0.010	0.039	0.006	0.010	0.000000	0.000000	938.42	-830.39
1	FID	ACIS-I-5	7.24	1144	-0.050	0.046	0.005	0.009	0.000000	0.000000	-1808.94	1066.53
2	FID	ACIS-I-6	7.26	1144	-0.032	-0.015	0.006	0.011	0.000000	0.000000	402.60	1712.39
3	GUIDE	335023248	8.93	2286	0.029	-0.049	0.077	0.125	217.634832	34.944512	-787.36	963.08
4	GUIDE	335414448	7.38	2288	-0.171	-0.090	0.055	0.085	216.992261	35.577204	2113.46	384.16
5	GUIDE	335417968	9.39	2286	0.000	0.052	0.087	0.142	217.358149	35.055285	98.08	1169.17
6	GUIDE	335421696	8.95	2286	-0.005	0.036	0.082	0.128	218.045699	35.772449	169.20	-2106.11
7	GUIDE	335422272	9.47	2286	0.146	0.047	0.089	0.146	217.586135	35.522660	639.61	-560.02

2.4 Star Slots

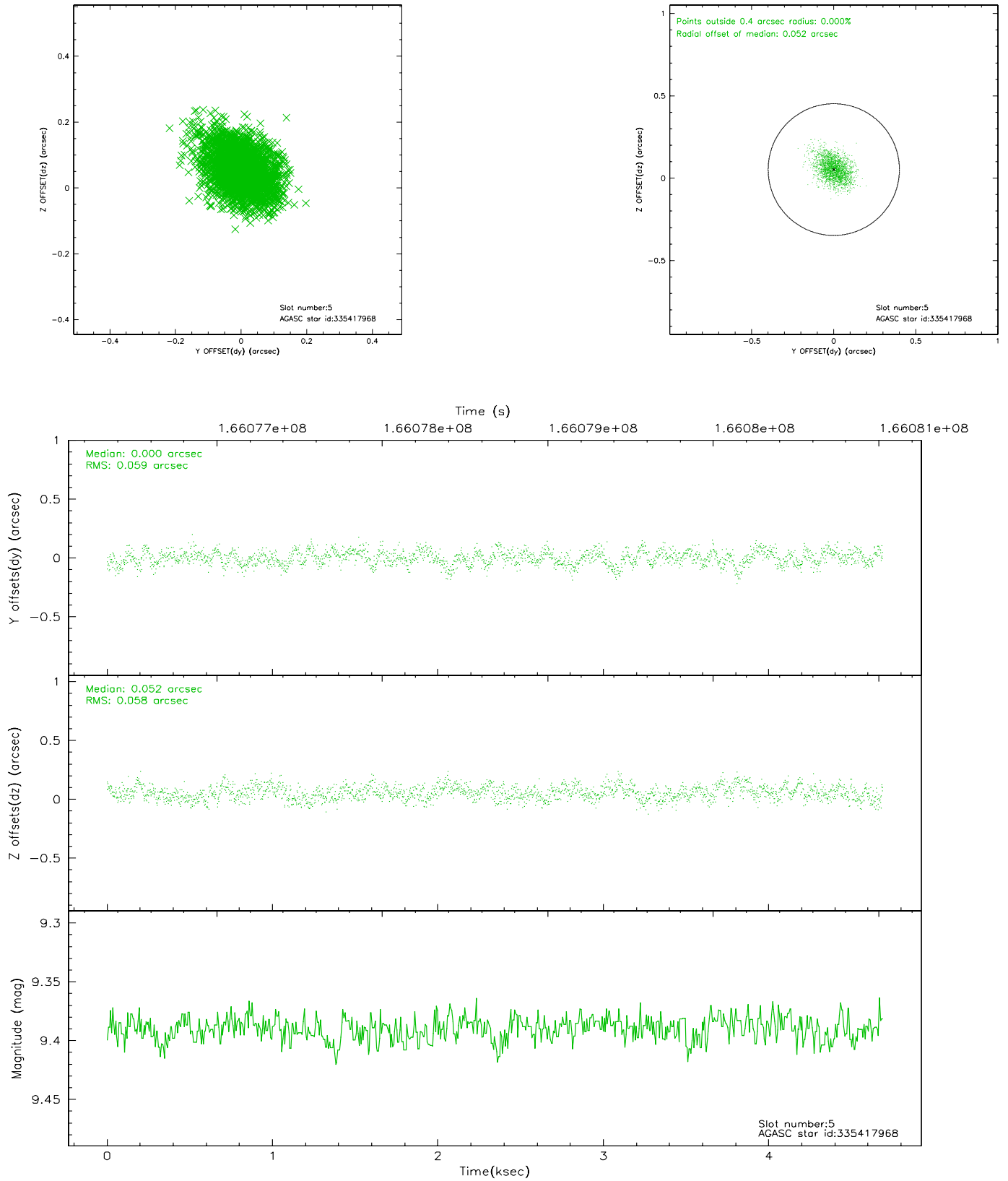
2.4.1 Slot 3



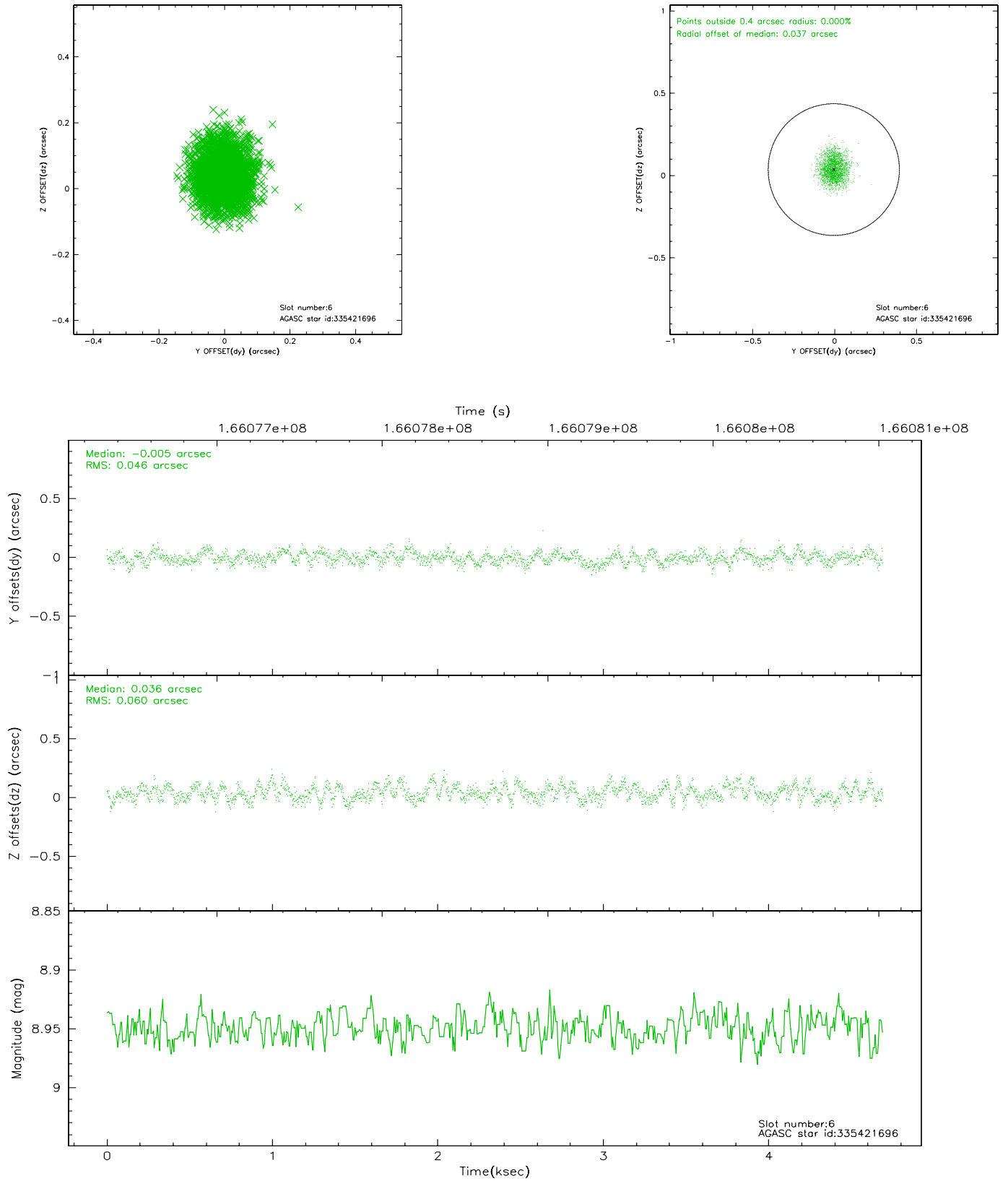
2.4.2 Slot 4



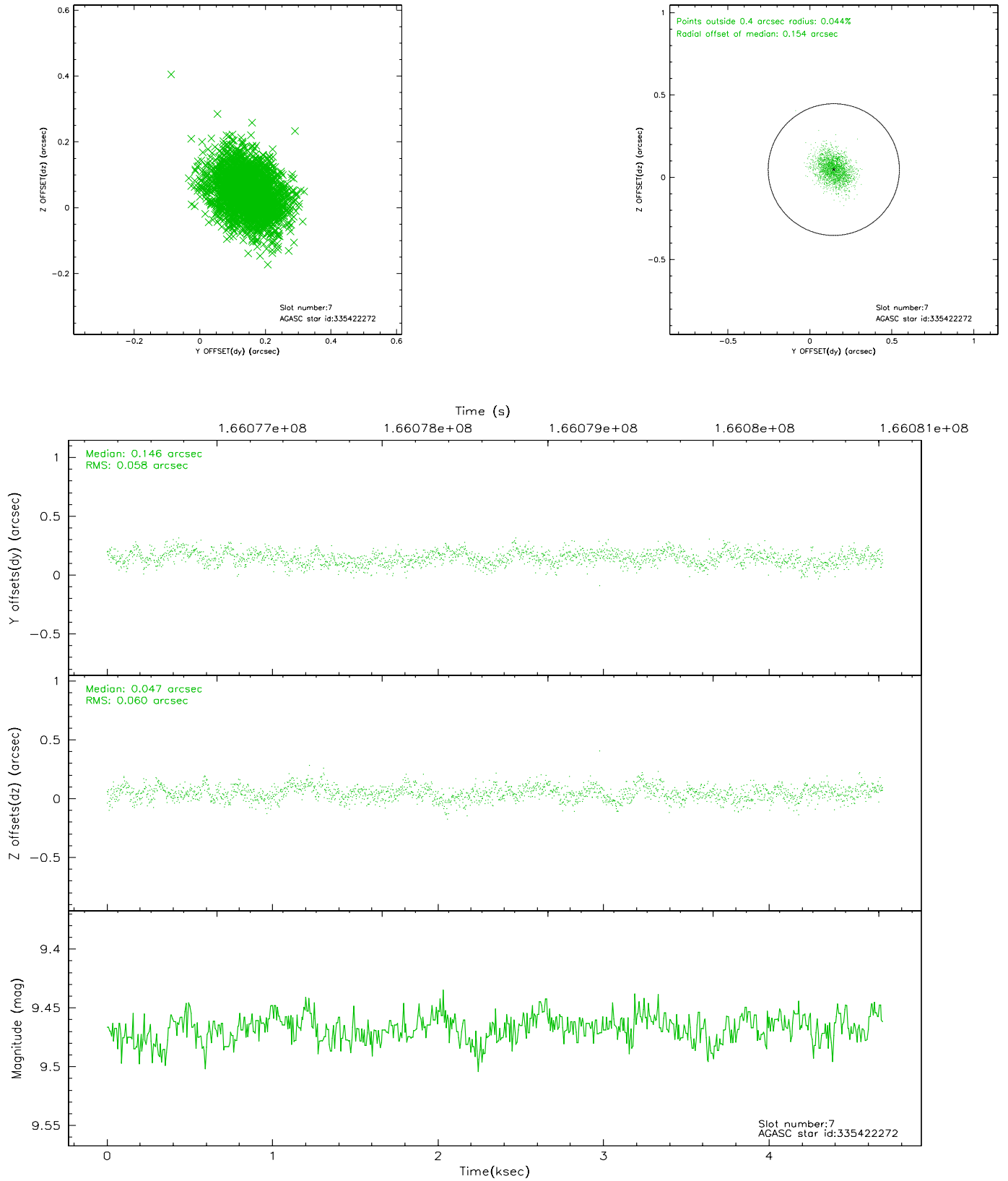
2.4.3 Slot 5



2.4.4 Slot 6

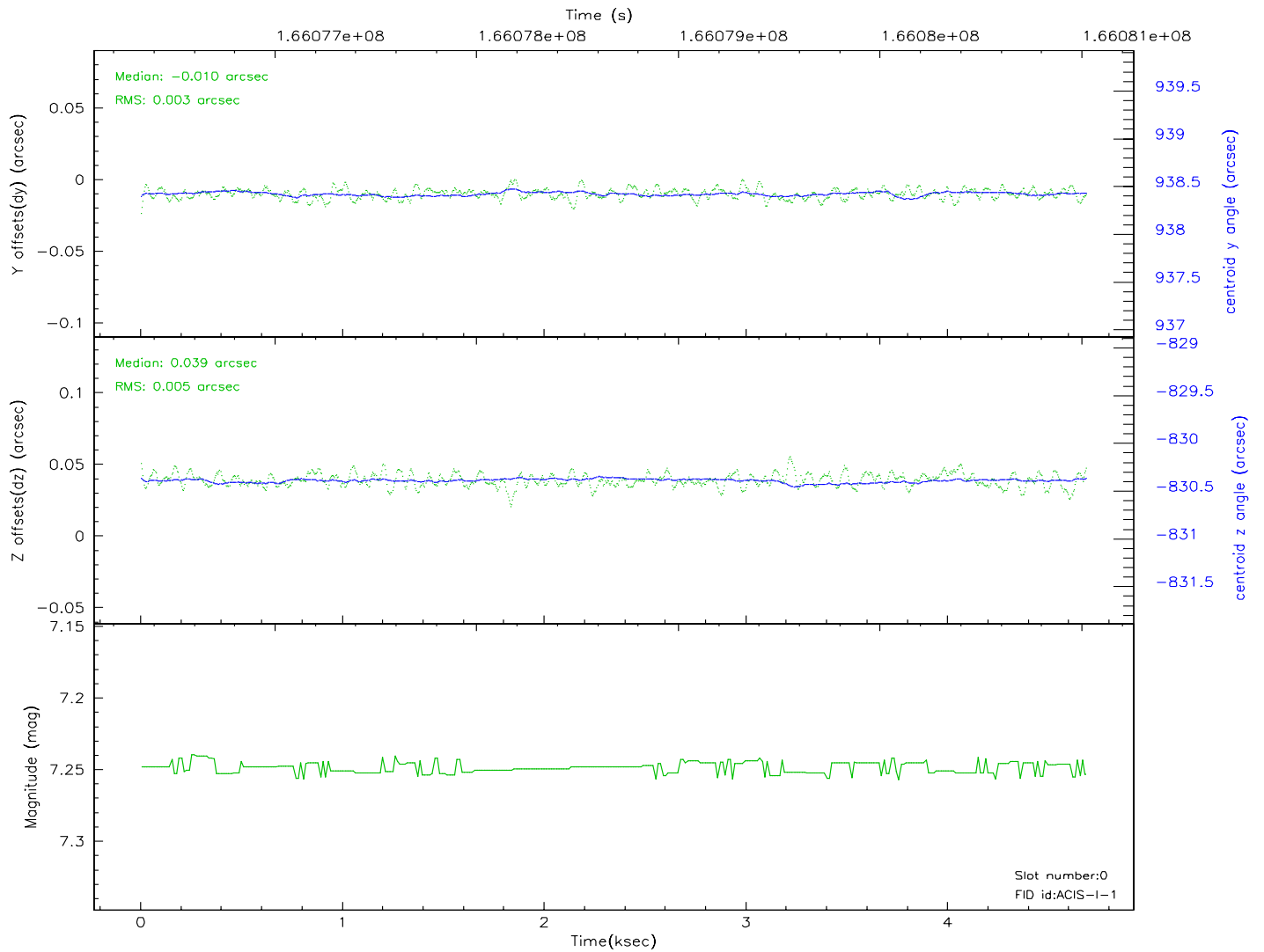
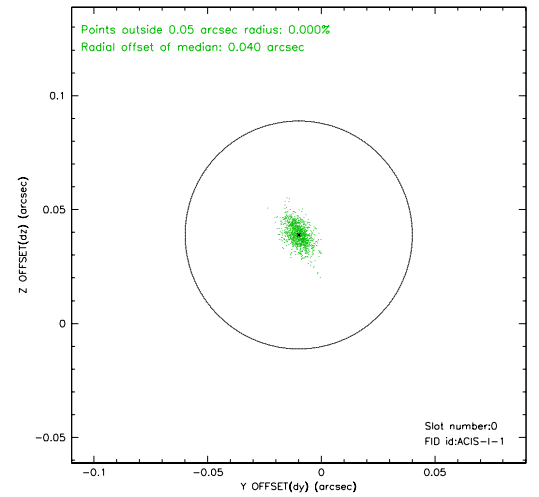
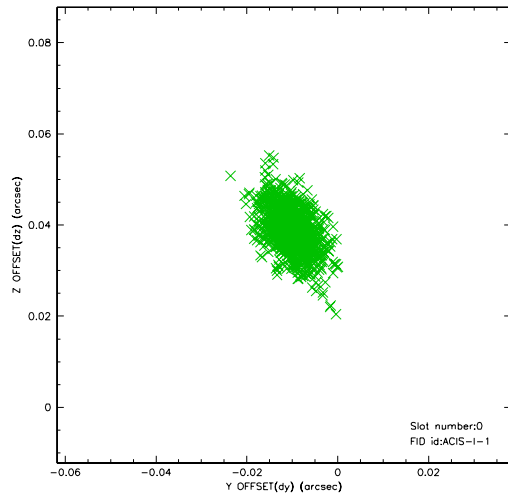


2.4.5 Slot 7

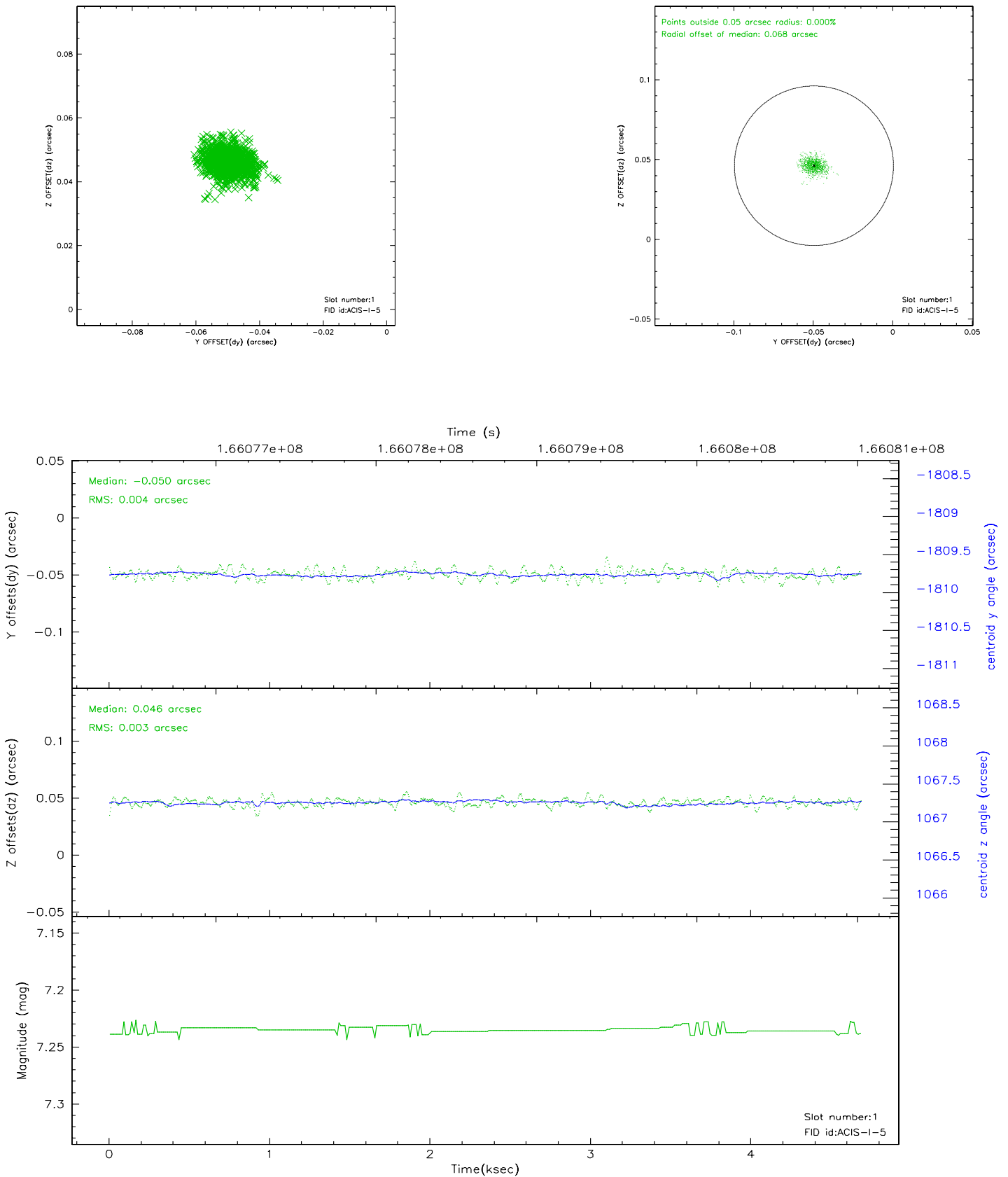


2.5 FID Slots

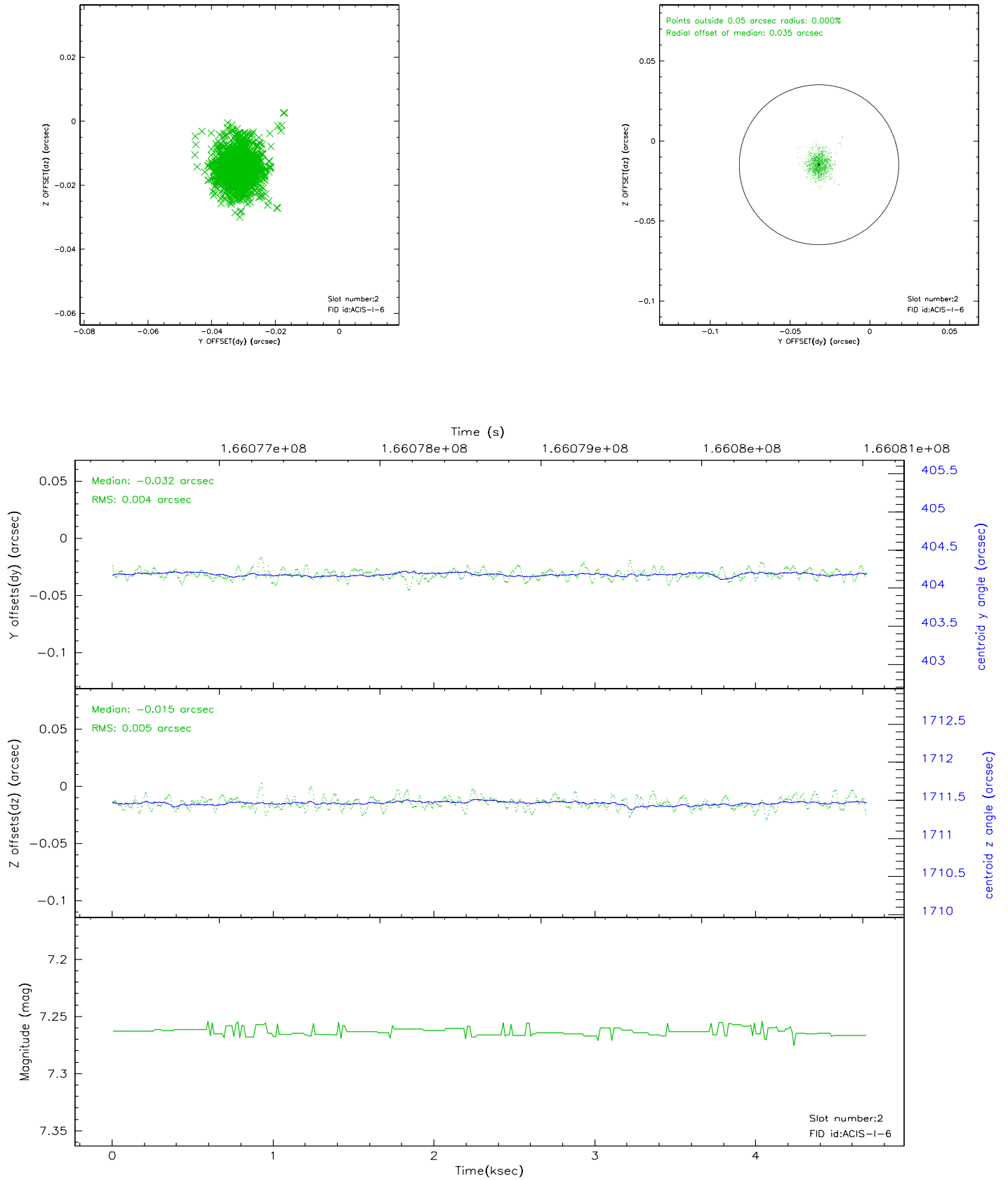
2.5.1 Slot 0



2.5.2 Slot 1



2.5.3 Slot 2



3 Point Sources

A Summary

A.1 Status

V&V Scientist	Jen Lauer
V&V Date (YYYY-MM-DD)	2006.07.30
V&V Edition	1
V&V Disposition and Status	OK
V&V Charge Time	4.29

A.2 Comments