

# V&V Reference Report

## L2 ASCDS Version : 7.6.8

Observation 3616 - L2 Version 001  
Chandra X-Ray Center

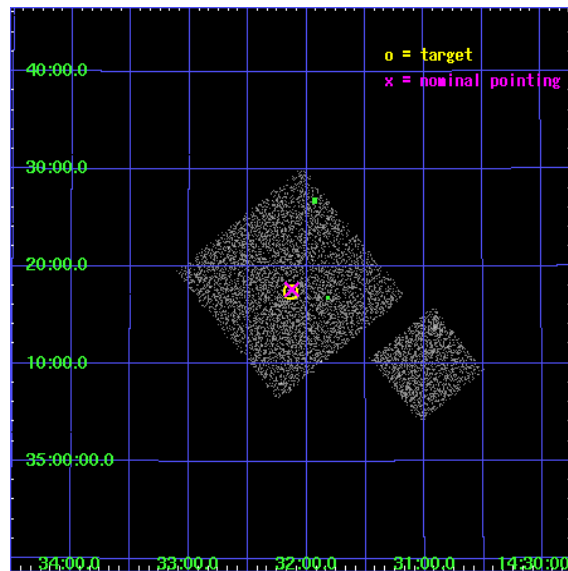
L2 Processing Date : Jul 29 2006

## Contents

<b>1</b>	<b>Front</b>	<b>2</b>
<b>2</b>	<b>OBI</b>	<b>3</b>
2.1	OBI . . . . .	3
2.1.1	Images . . . . .	3
2.1.2	Bias . . . . .	3
2.1.3	Parameters . . . . .	4
2.1.4	Events . . . . .	4
2.2	Compared Parameters . . . . .	5
2.3	Aspect . . . . .	6
2.4	Star Slots . . . . .	9
2.4.1	Slot 3 . . . . .	9
2.4.2	Slot 4 . . . . .	10
2.4.3	Slot 5 . . . . .	11
2.4.4	Slot 6 . . . . .	12
2.4.5	Slot 7 . . . . .	13
2.5	FID Slots . . . . .	14
2.5.1	Slot 0 . . . . .	14
2.5.2	Slot 1 . . . . .	15
2.5.3	Slot 2 . . . . .	16
<b>3</b>	<b>Point Sources</b>	<b>17</b>
<b>A</b>	<b>Summary</b>	<b>18</b>
A.1	Status . . . . .	18
A.2	Comments . . . . .	18

# 1 Front

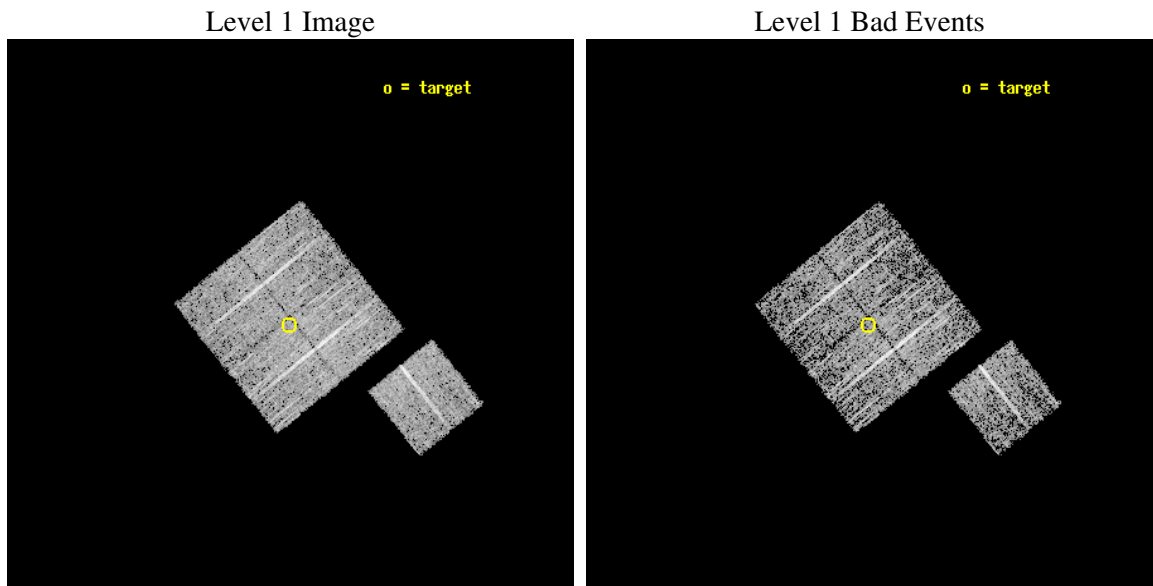
seq_num	900216
obs_id	3616
title	CHANDRA LARGE SCALE SURVEY OF THE NOAO BOOTES DEEP FIELD
observer	Dr. Stephen Murray
object	NOAO FIELD F37
dtcycle	0
cycle	P
ra_targ	218.034014
dec_targ	35.290164
ra_nom	218.03133602079
dec_nom	35.294288670414
roll_nom	141.01038806704
revision	2
ontime	4674.7999910116
livetime	4613.7202875914
ontime0	4674.7999910116
ontime1	4674.7999910116
ontime2	4674.7999910116
ontime3	4674.7999910116
ontime6	4674.7999910116
l2events	9622



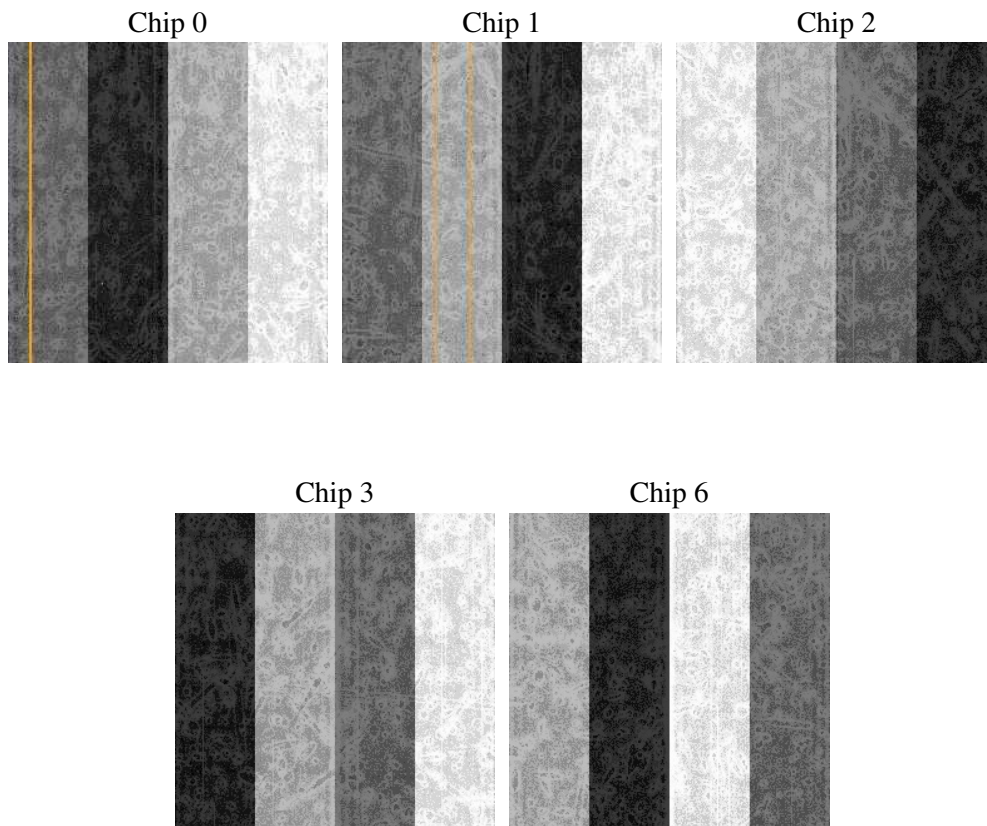
## 2 OBI

### 2.1 OBI

#### 2.1.1 Images



#### 2.1.2 Bias



### 2.1.3 Parameters

obi_num	1
ascdsver	7.6.8
caldbver	3.2.2
date	2006-07-29T22:11:47
revision	2

sched_exp_time	4900.000000
ontime	4680.1038973629
ontime0	4680.1039172709
ontime1	4680.1039172709
ontime2	4680.1038774252
ontime3	4680.1038973629
ontime6	4680.1039172709
llevents	114519

### 2.1.4 Events

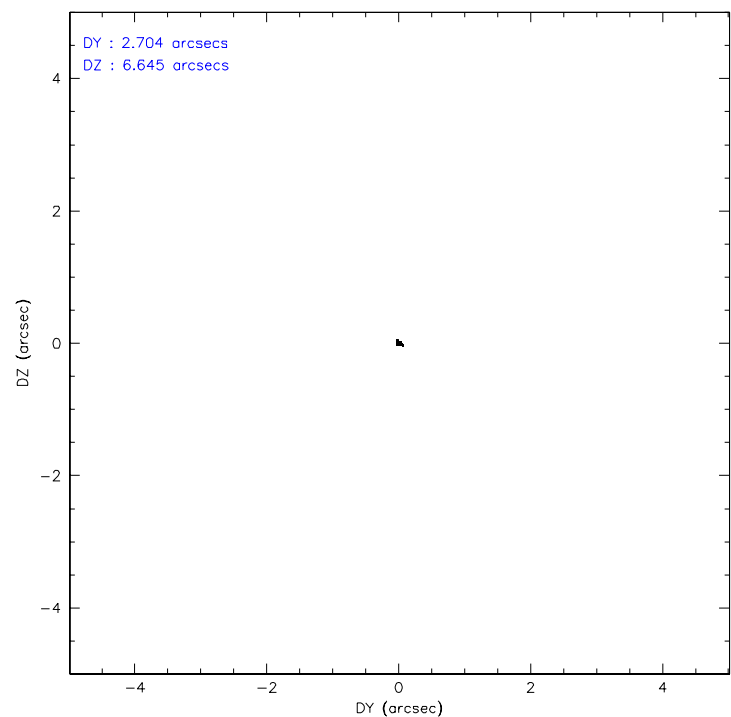
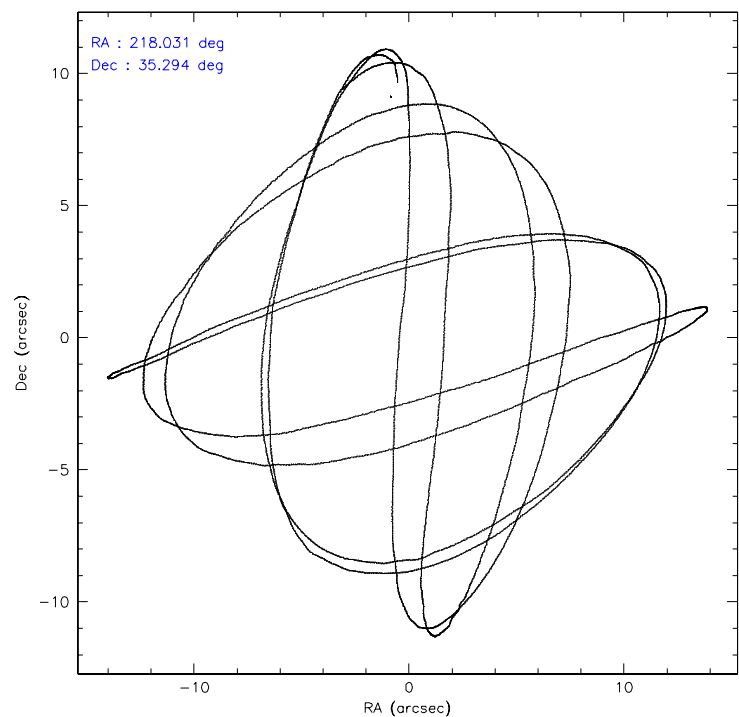
	ccd 0	ccd 1	ccd 2	ccd 3	ccd 6
level 1 events	21755	20758	25369	24098	22539
rejected events	19394	18405	23058	21860	20059
rejected %	89%	88%	90%	90%	88%

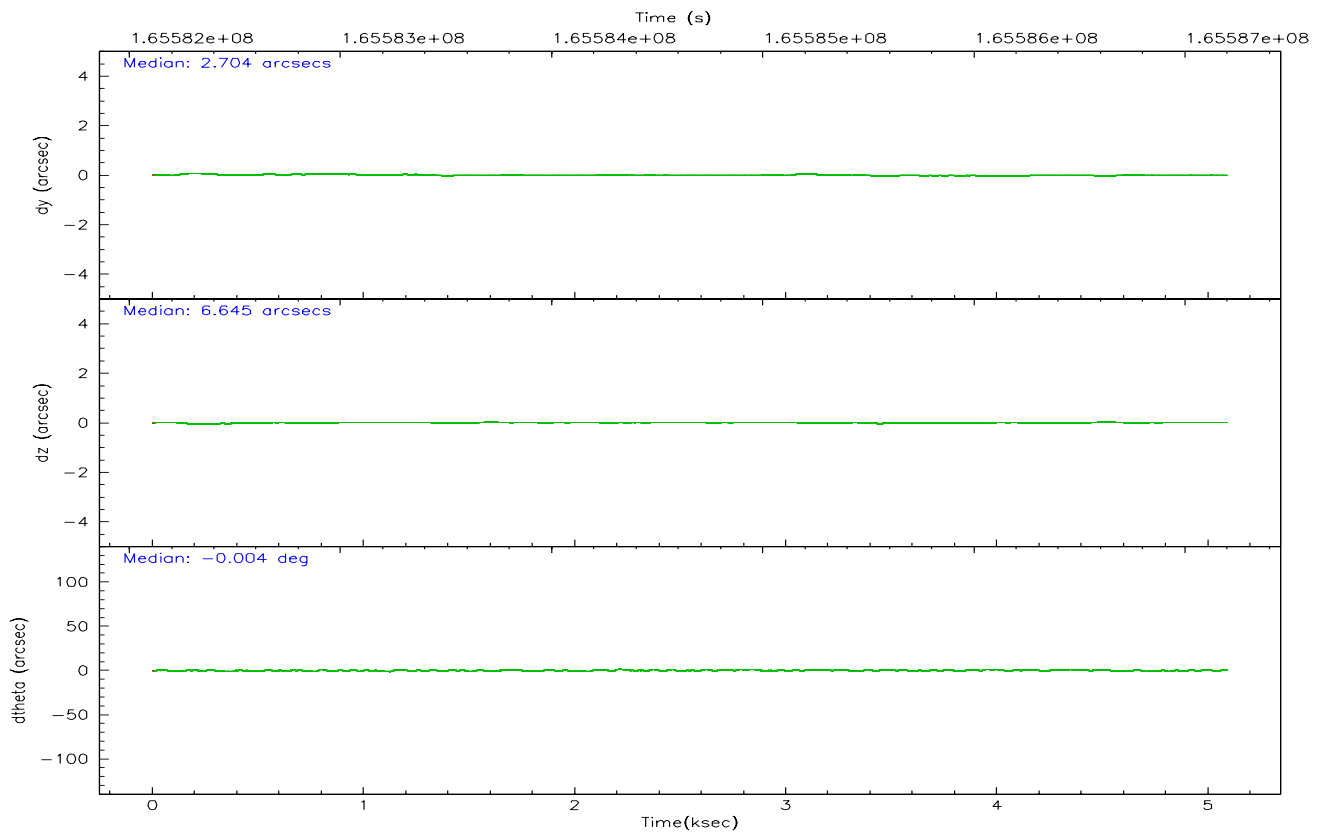
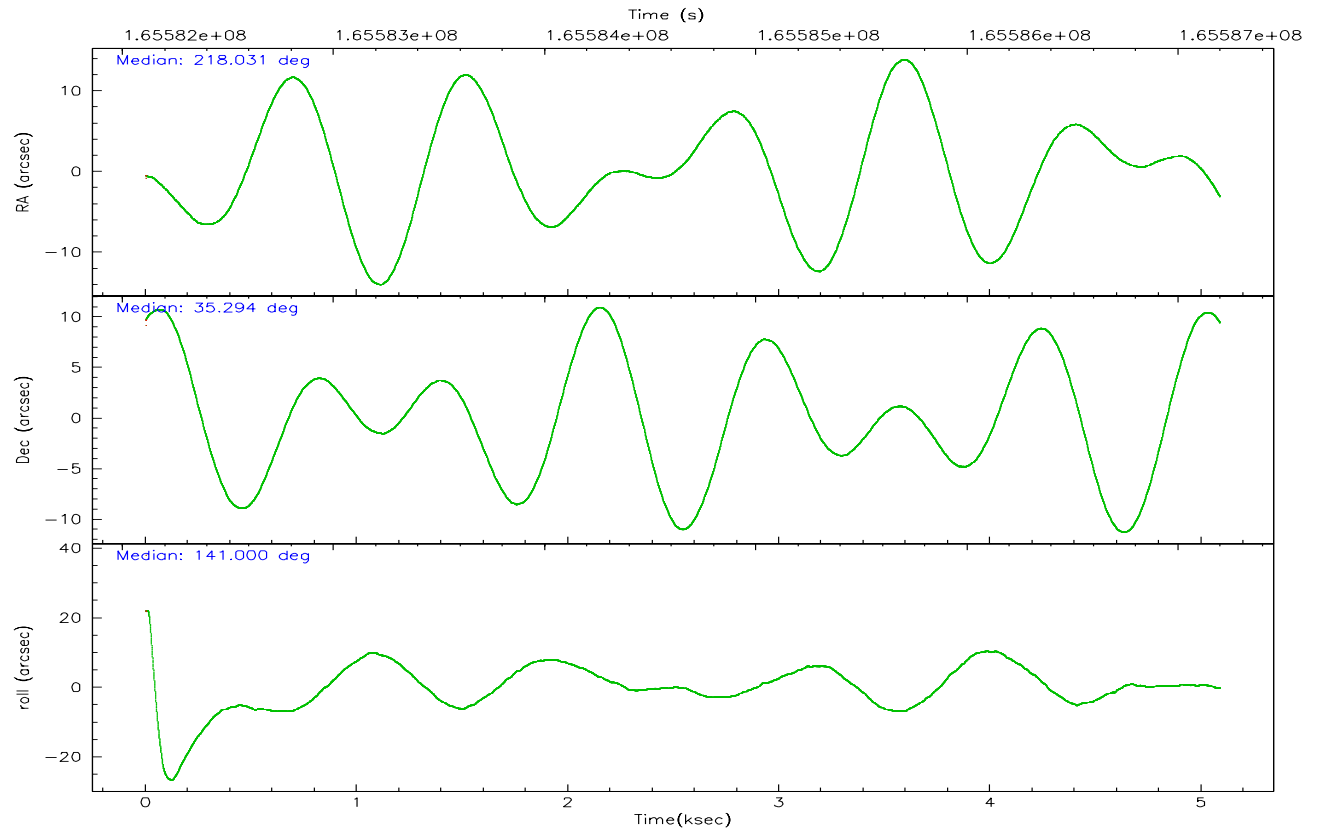
	ccd 0	ccd 1	ccd 2	ccd 3	ccd 6
grade 0 events	920	847	909	855	958
	4%	4%	3%	3%	4%
grade 1 events	10	6	12	10	16
	0%	0%	0%	0%	0%
grade 2 events	544	505	527	456	518
	2%	2%	2%	1%	2%
grade 3 events	272	263	238	245	280
	1%	1%	0%	1%	1%
grade 4 events	214	270	278	261	246
	0%	1%	1%	1%	1%
grade 5 events	680	753	640	751	755
	3%	3%	2%	3%	3%
grade 6 events	414	469	362	423	481
	1%	2%	1%	1%	2%
grade 7 events	18701	17645	22403	21097	19285
	85%	85%	88%	87%	85%

## 2.2 Compared Parameters

Parameter	Planned	Actual	Parameter	Planned	Actual
Instrument	ACIS	ACIS	Obspar format version number	6	6
Detector	ACIS-01236	ACIS-01236	Obspar file type	PREDICTED	ACTUAL
Grating	NONE	NONE	Obspar update status	NONE	UPDATED
Data mode	VFAINT	VFAINT	On-chip summing requested	N	N
Observation mode	POINTING	POINTING	Subarray requested	NONE	NONE
Pointing RA	218.064503	218.0313360207908	Alternating exposures requested	N	N
Pointing Dec	35.290082	35.29428867041403	Primary exposure time	0.000000	3.1
Pointing Roll	140.782393	141.010388067043			
SIM focus pos (mm)	-0.782348	-0.7809083437167272			
SIM defocus (mm)	0	0.001439871863259334			
SIM translation stage pos (mm)	-233.592463	-233.5874344608287			
SIM translation stage offset (mm)	0	-0.005018542100998502			
Observation start time	165582304.184000	165581927.58301			
Observation start date	2003-04-01T11:04:00	2003-04-01T10:58:47			
Observation end time	165587204.184000	165587338.55824			
Observation end date	2003-04-01T12:25:40	2003-04-01T12:28:58			
Read mode	TIMED	TIMED			

2.3 Aspect





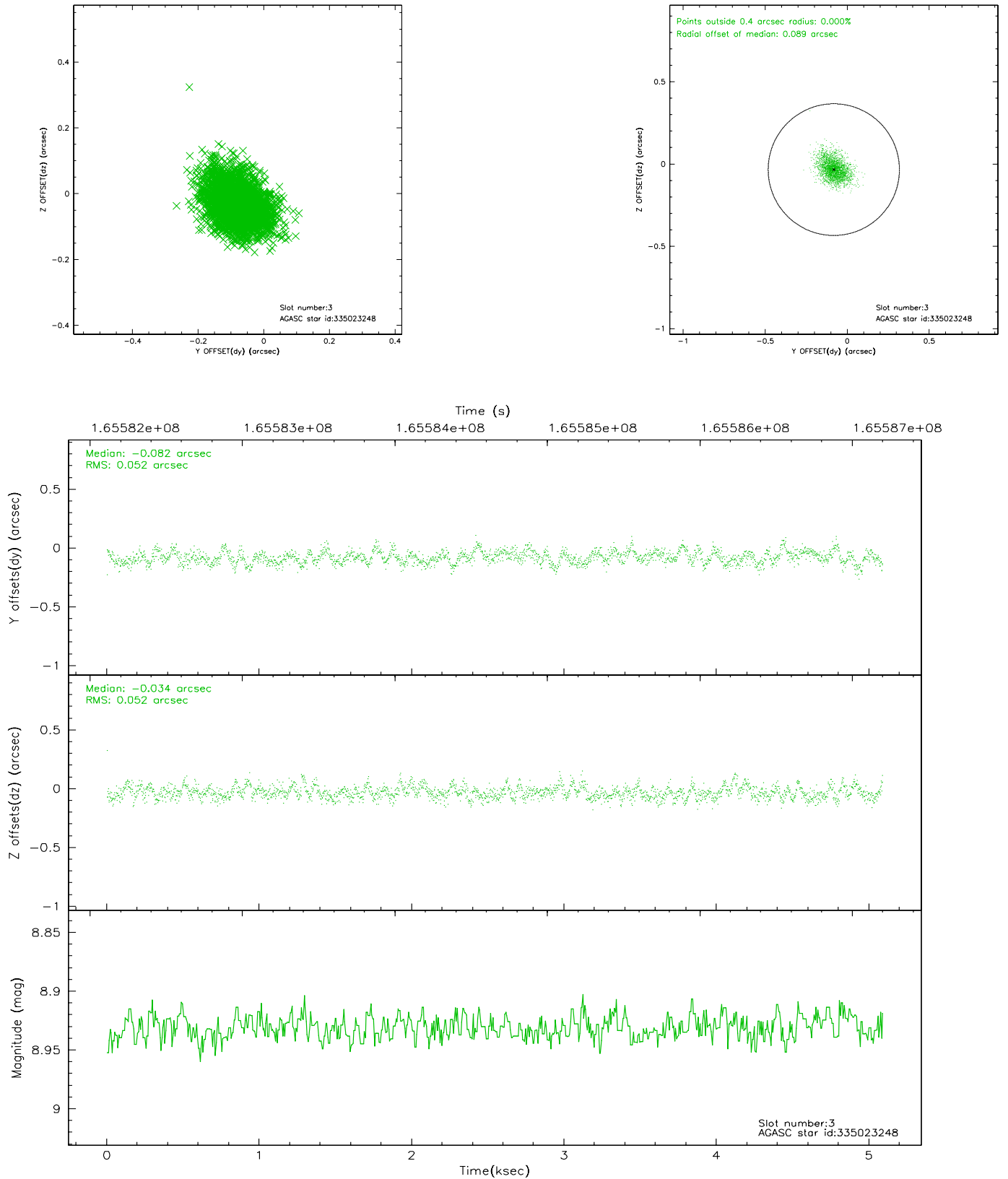
### Slot Statistics

slot	status	id	mag	n_pts	med_dy	med_dz	dr1	dr2	ra	dec	mean_y	mean_z
0	FID	ACIS-I-1	7.25	1242	0.050	-0.050	0.006	0.011	0.000000	0.000000	937.18	-830.04
1	FID	ACIS-I-5	7.24	1242	0.109	0.139	0.006	0.010	0.000000	0.000000	-1810.28	1066.93
2	FID	ACIS-I-6	7.25	1242	-0.250	-0.019	0.007	0.011	0.000000	0.000000	401.03	1712.72
3	GUIDE	335023248	8.93	2483	-0.082	-0.034	0.078	0.128	217.634832	34.944512	197.31	1763.41
4	GUIDE	335415168	9.79	2482	0.050	-0.092	0.110	0.181	217.681296	35.301767	900.83	678.60
5	GUIDE	335417968	9.39	2482	0.026	0.083	0.091	0.150	217.358149	35.055285	1083.22	1965.86
6	GUIDE	335421696	8.95	2482	-0.048	0.111	0.068	0.108	218.045699	35.772449	1141.16	-1309.52
7	GUIDE	335422272	9.47	2479	0.057	-0.070	0.091	0.147	217.586135	35.522660	1618.15	234.48

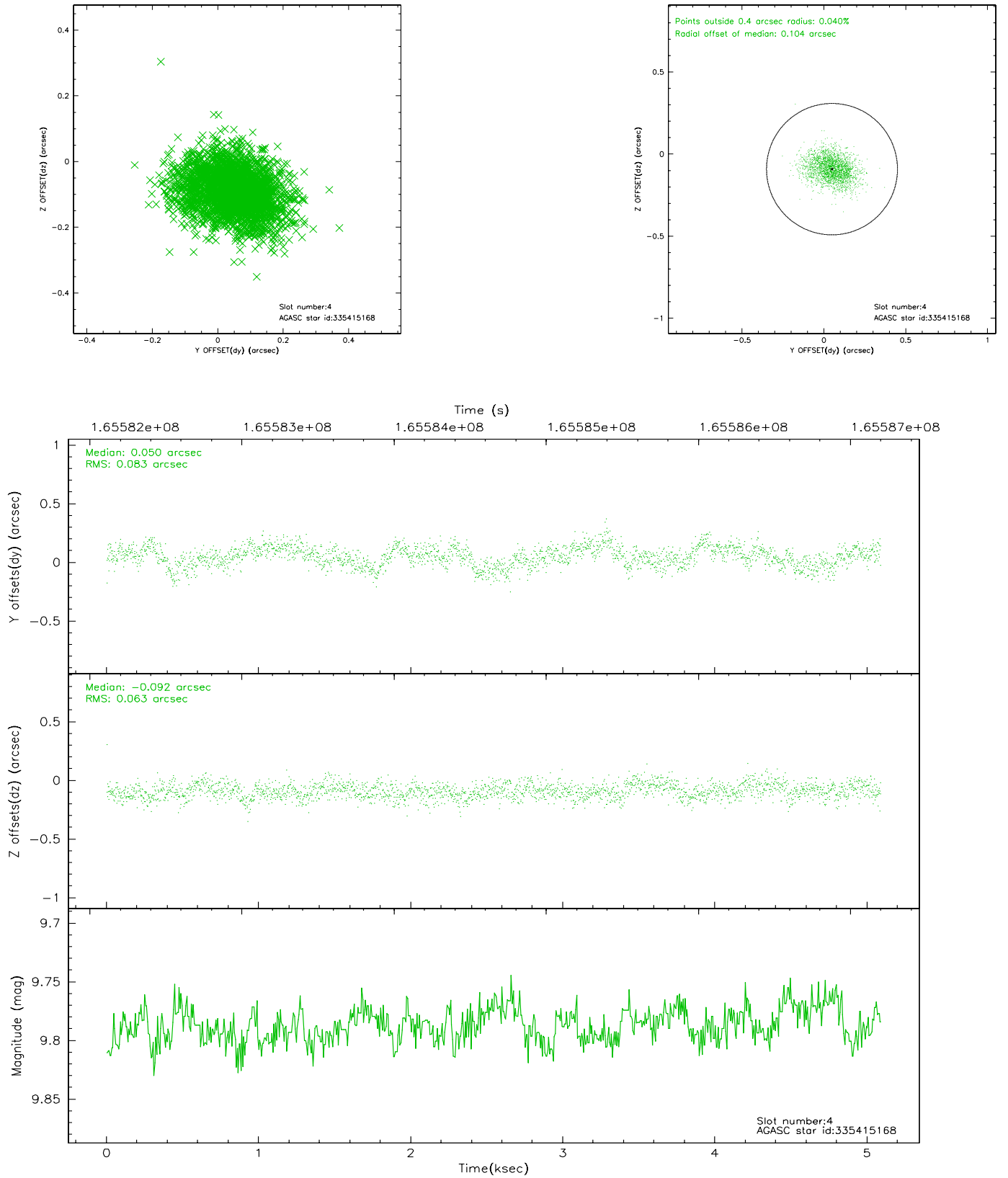


## 2.4 Star Slots

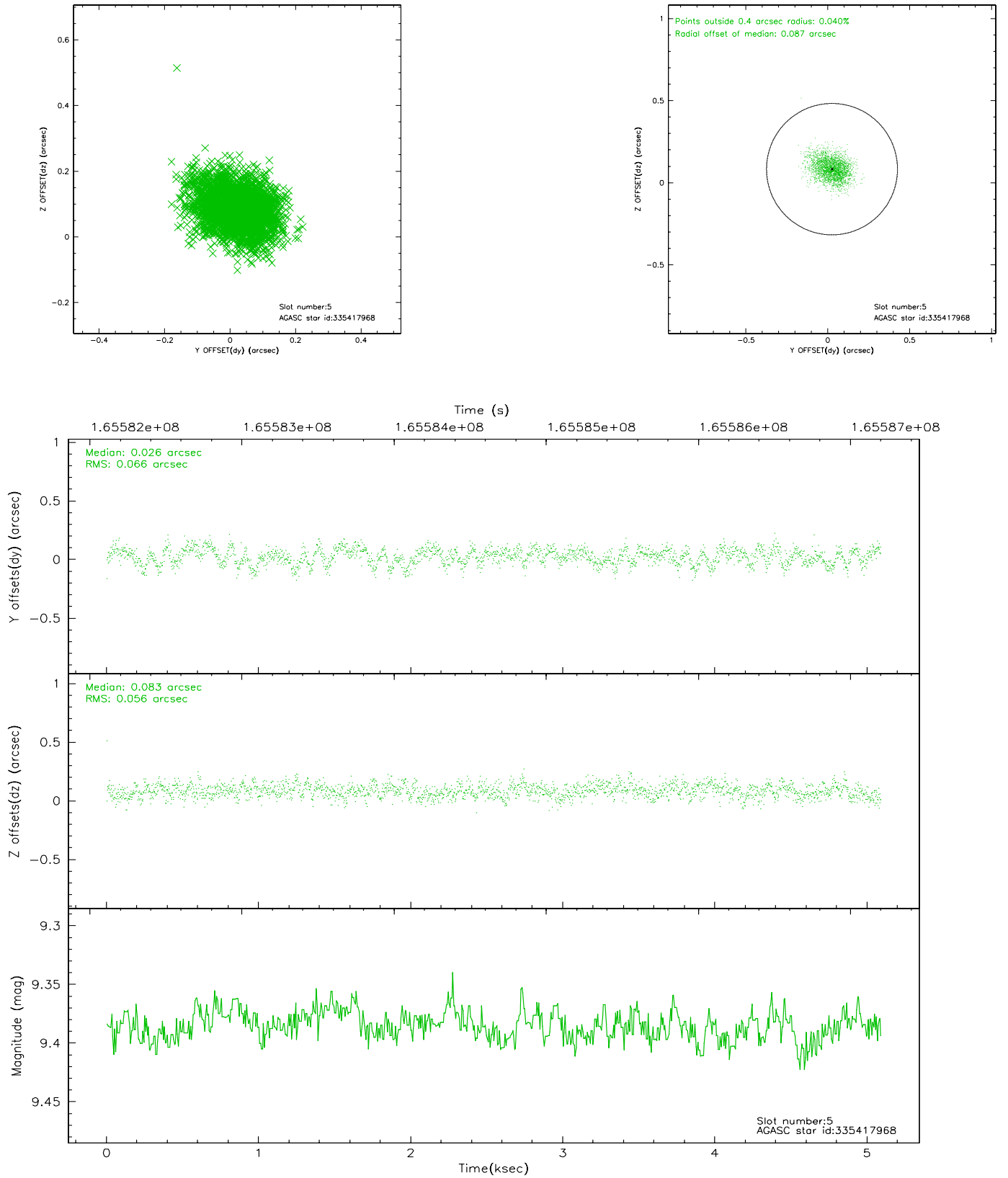
### 2.4.1 Slot 3



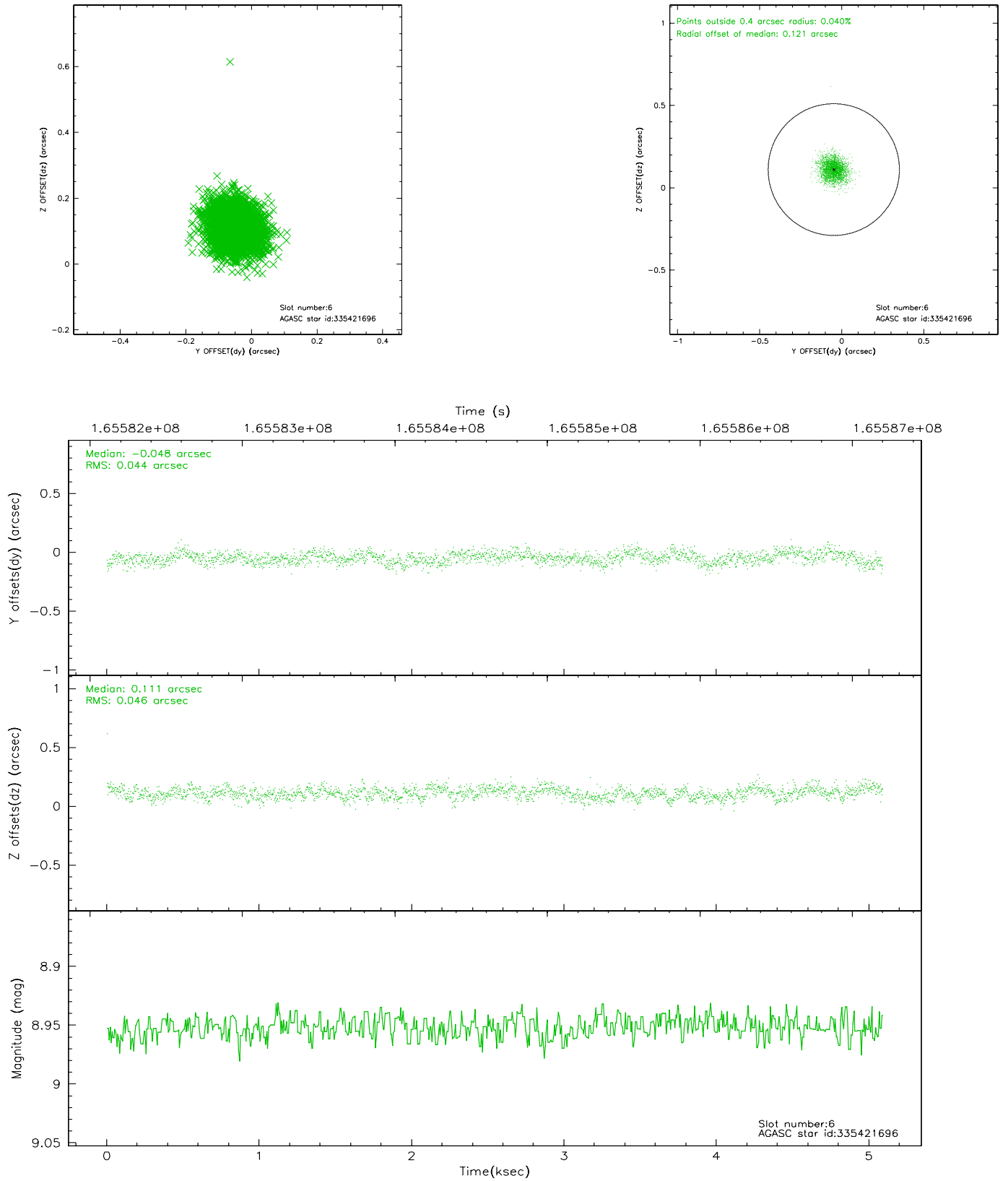
## 2.4.2 Slot 4



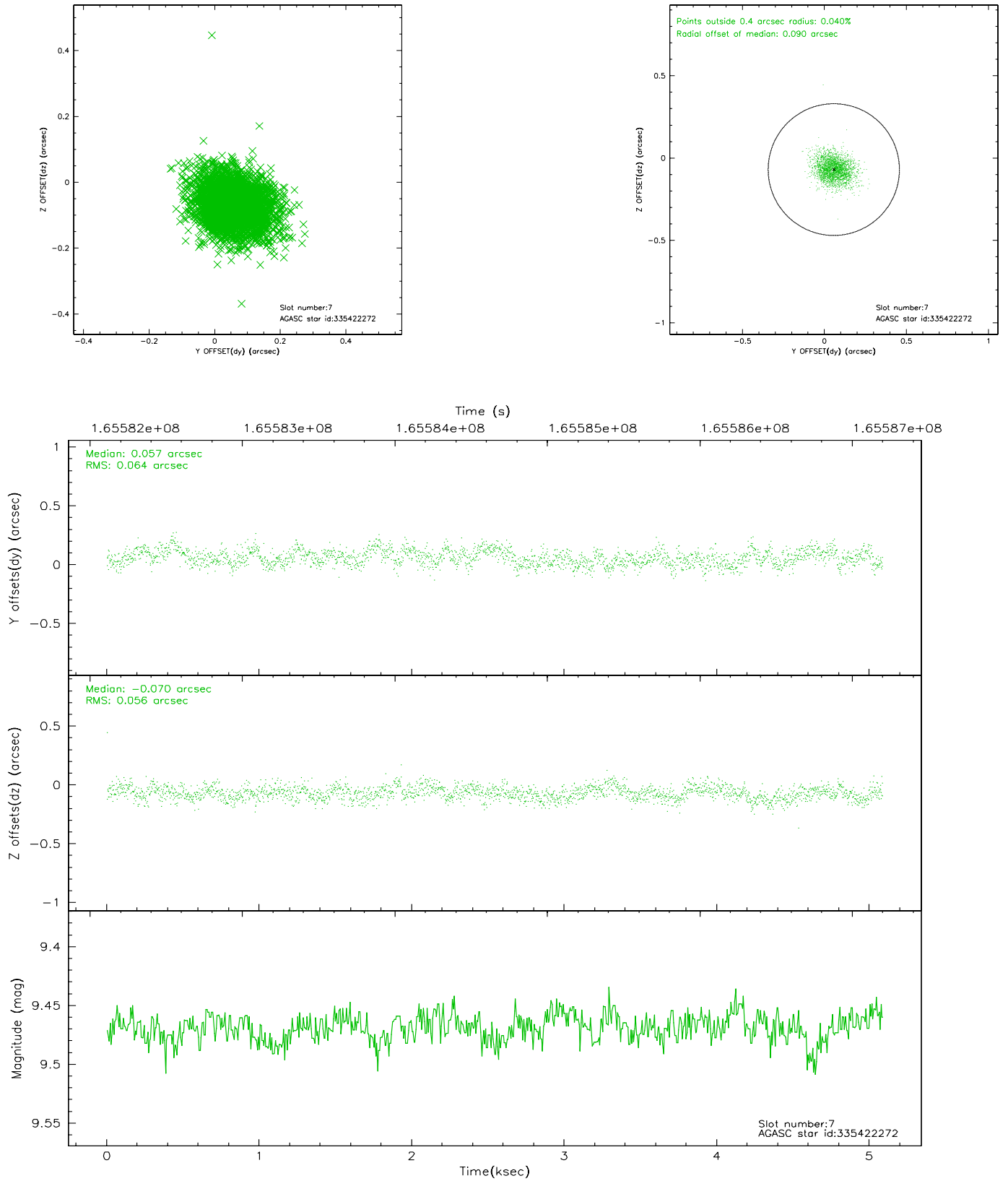
### 2.4.3 Slot 5



## 2.4.4 Slot 6

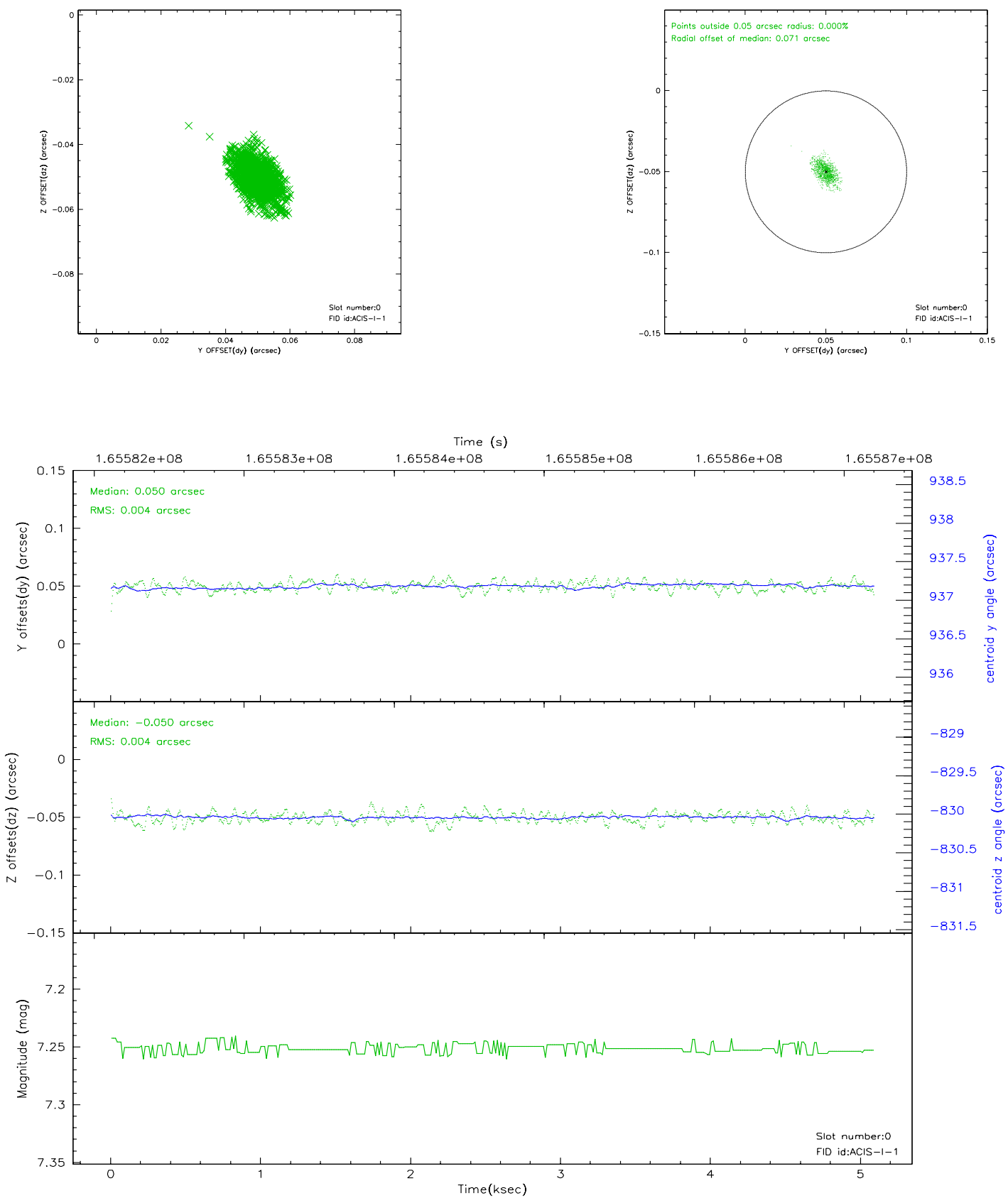


## 2.4.5 Slot 7

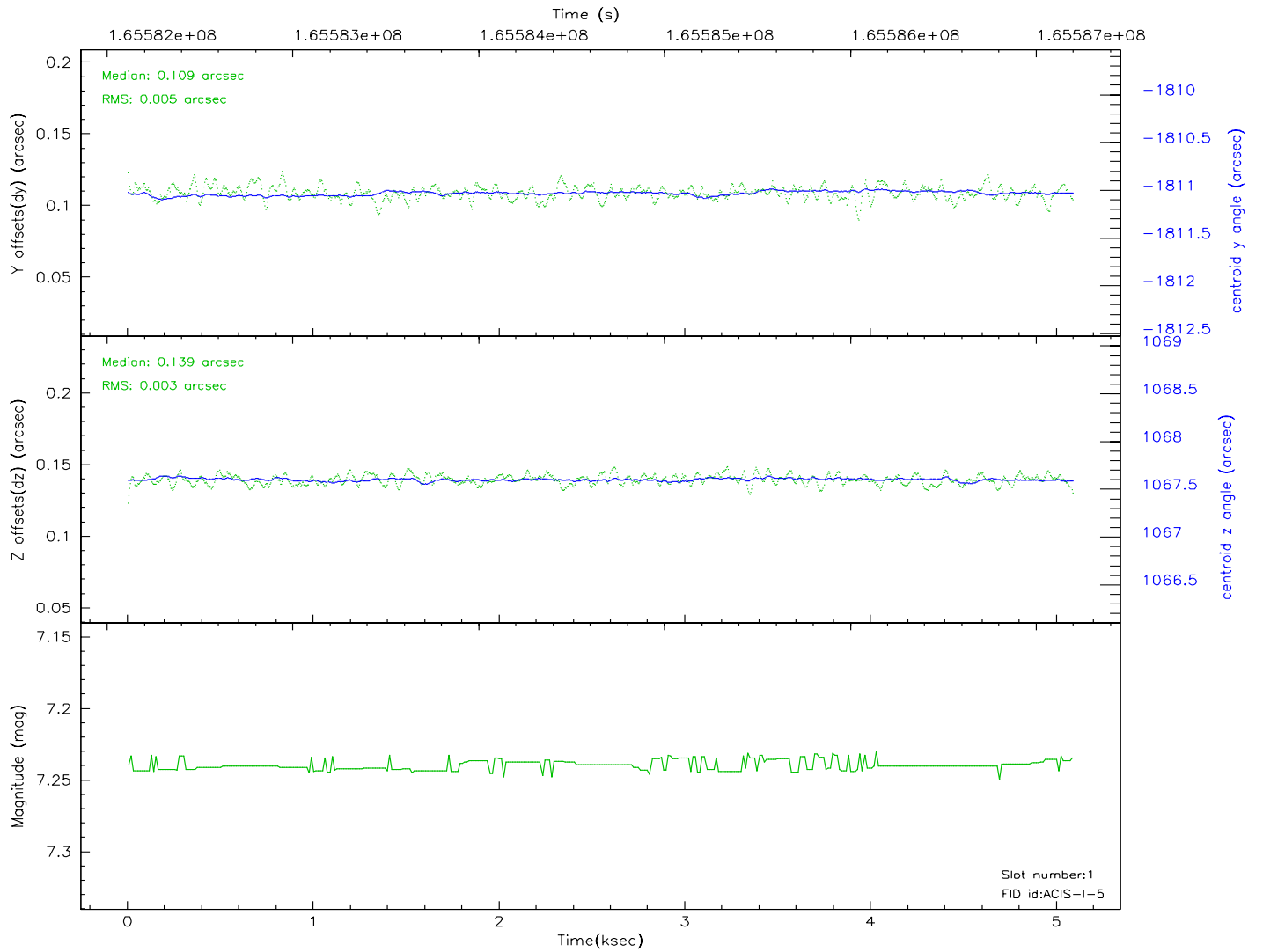
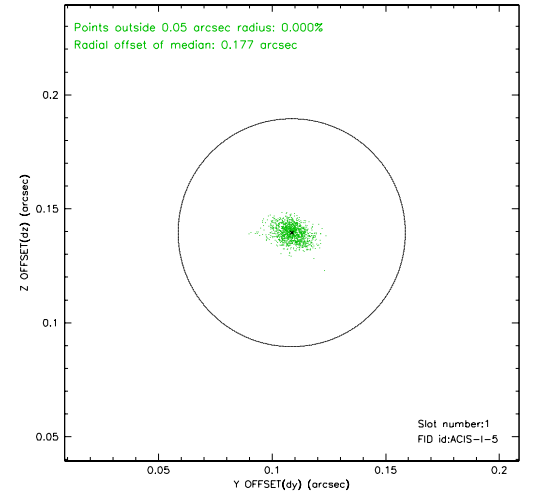
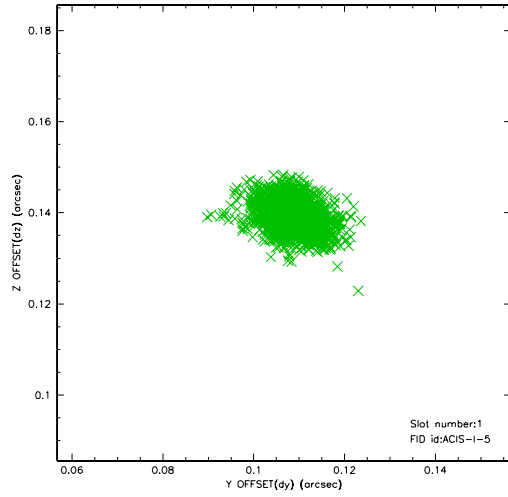


## 2.5 FID Slots

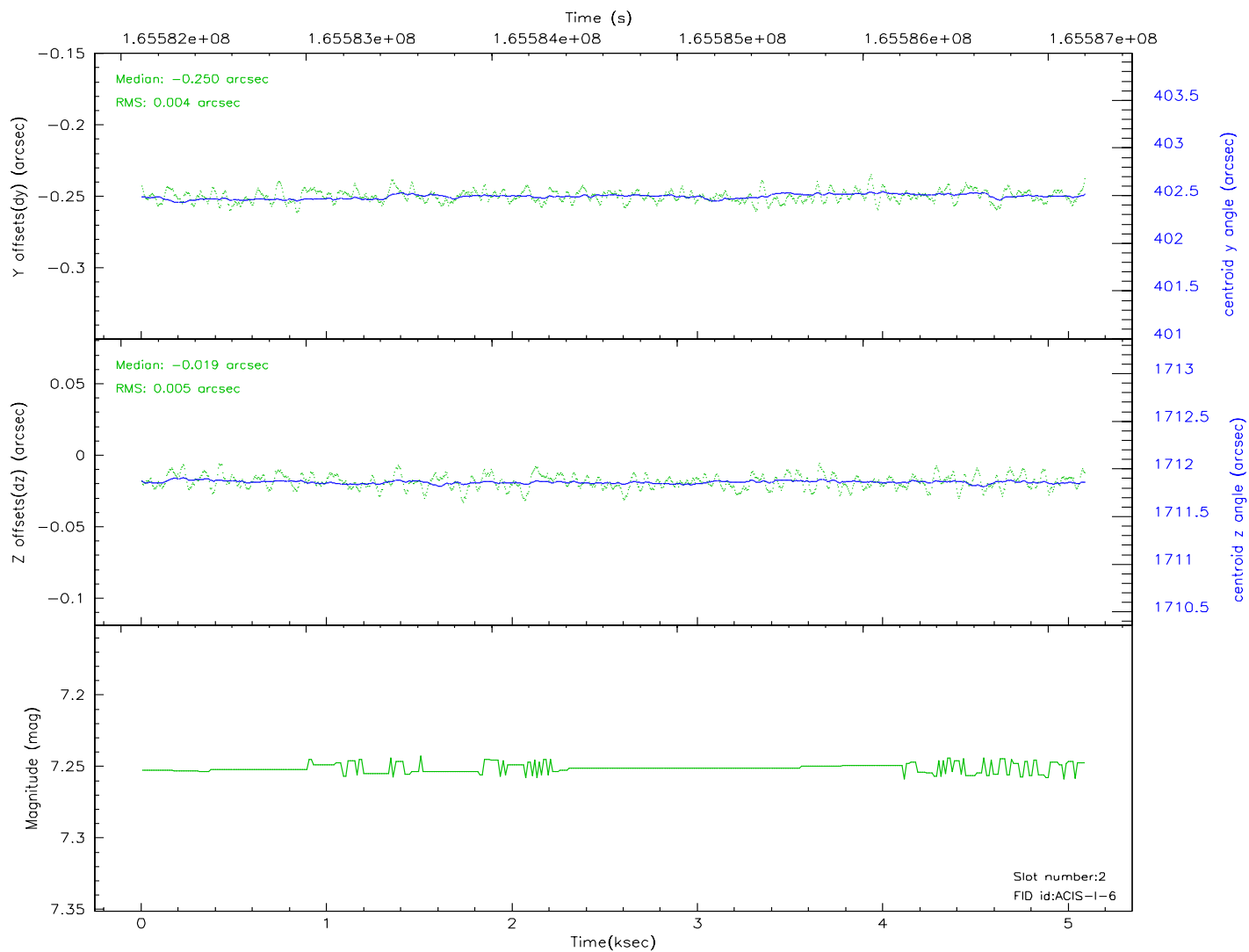
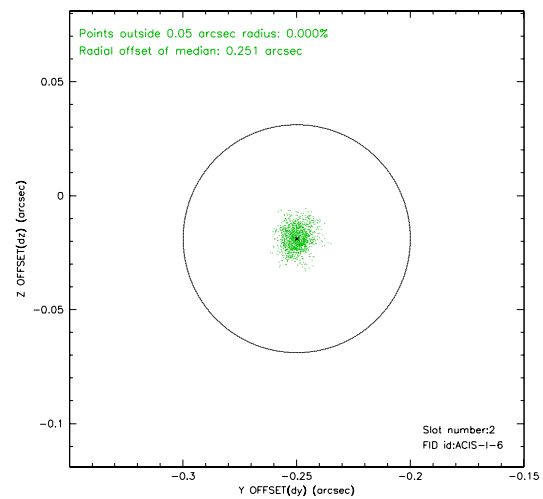
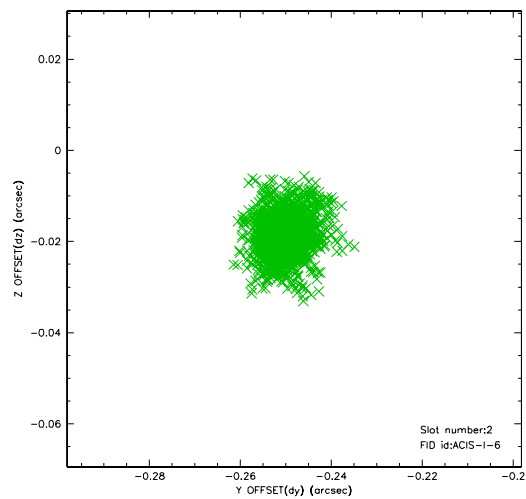
### 2.5.1 Slot 0



## 2.5.2 Slot 1



### 2.5.3 Slot 2





### 3 Point Sources

9.36 arcmin



## A Summary

### A.1 Status

V&V Scientist	Jen Lauer
V&V Date (YYYY-MM-DD)	2006.07.30
V&V Edition	1
V&V Disposition and Status	OK
V&V Charge Time	4.674

### A.2 Comments