

V&V Reference Report

L2 ASCDS Version : 7.6.8

Observation 3611 - L2 Version 001
Chandra X-Ray Center

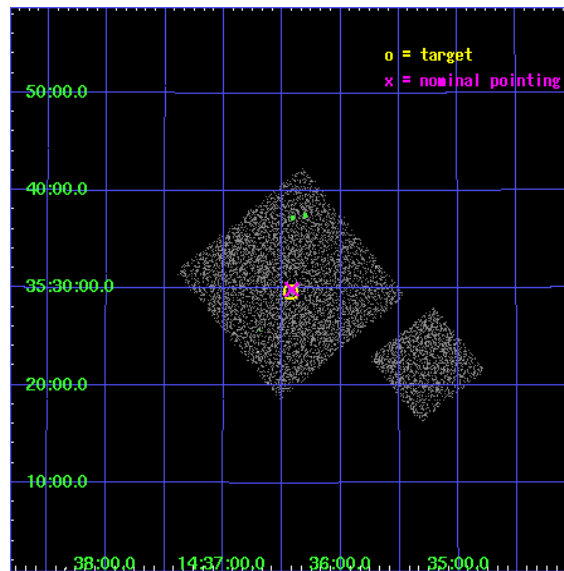
L2 Processing Date : Jul 30 2006

Contents

1	Front	2
2	OBI	3
2.1	OBI	3
2.1.1	Images	3
2.1.2	Bias	3
2.1.3	Parameters	4
2.1.4	Events	4
2.2	Compared Parameters	5
2.3	Aspect	6
2.4	Star Slots	9
2.4.1	Slot 3	9
2.4.2	Slot 4	10
2.4.3	Slot 5	11
2.4.4	Slot 6	12
2.4.5	Slot 7	13
2.5	FID Slots	14
2.5.1	Slot 0	14
2.5.2	Slot 1	15
2.5.3	Slot 2	16
3	Point Sources	17
A	Summary	18
A.1	Status	18
A.2	Comments	18

1 Front

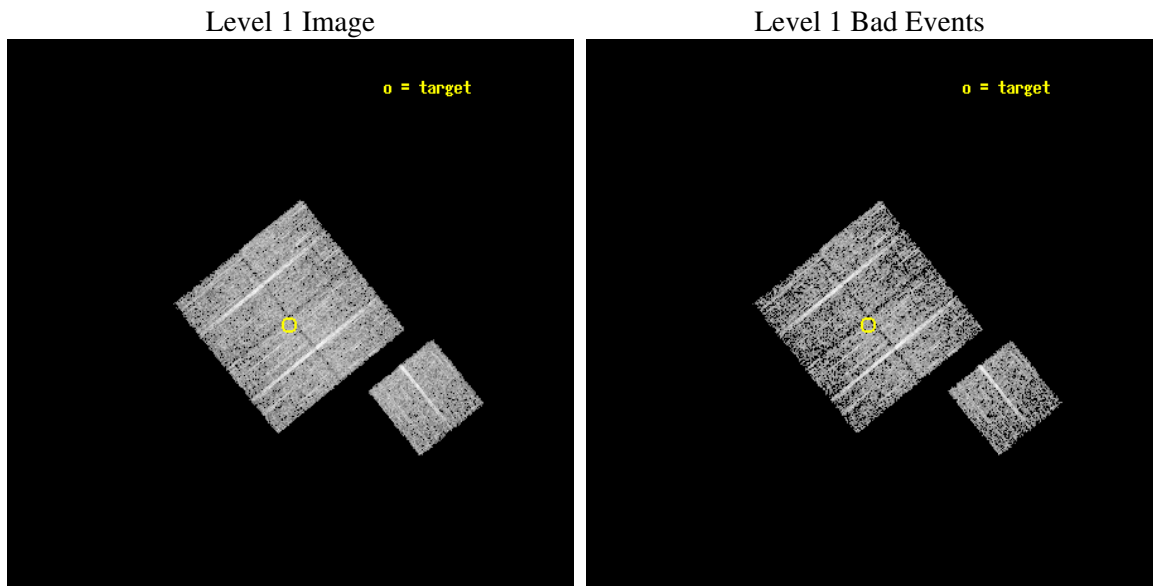
seq_num	900211
obs_id	3611
title	CHANDRA LARGE SCALE SURVEY OF THE NOAO BOOTES DEEP FIELD
observer	Dr. Stephen Murray
object	NOAO FIELD F25
dtcycle	0
cycle	P
ra_targ	219.106748
dec_targ	35.493858
ra_nom	219.10415121288
dec_nom	35.497925221566
roll_nom	141.01019884709
revision	2
ontime	4773.959010601
livetime	4711.58372159
ontime0	4777.0999908149
ontime1	4773.9590205848
ontime2	4777.0999908149
ontime3	4773.959010601
ontime6	4777.0999908149
l2events	9484



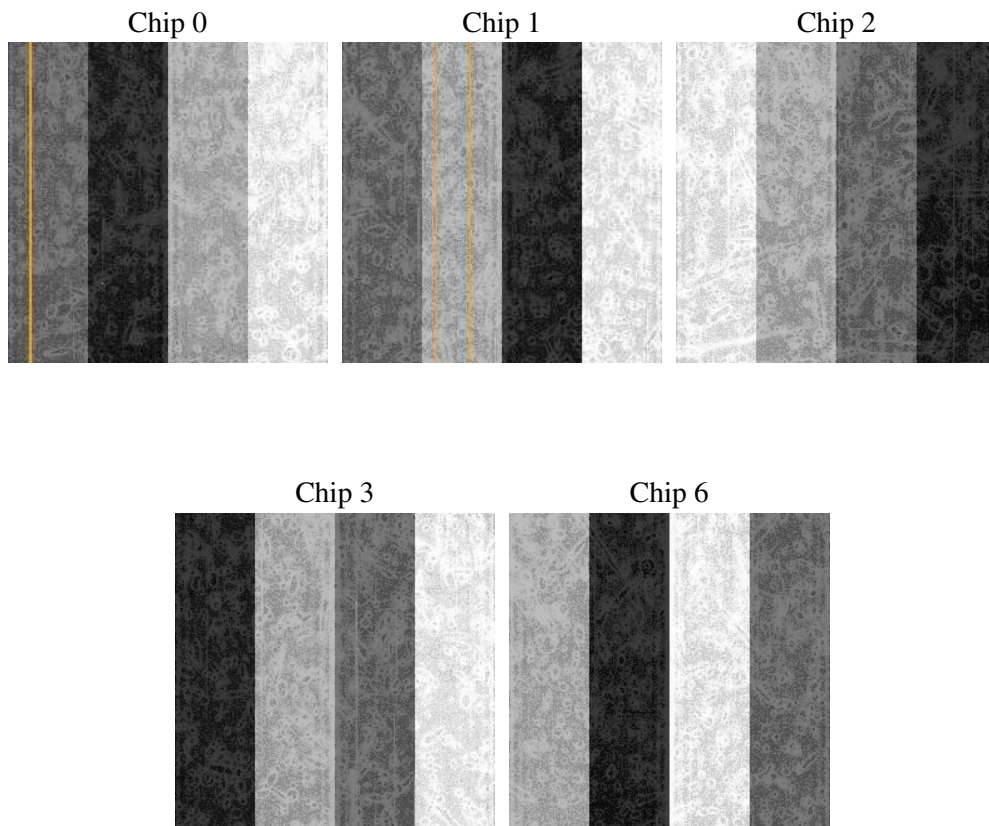
2 OBI

2.1 OBI

2.1.1 Images



2.1.2 Bias



2.1.3 Parameters

obi_num	1
ascdsver	7.6.8
caldsver	3.2.2
date	2006-07-30T05:22:49
revision	2

sched_exp_time	5000.000000
ontime	4777.4714114964
ontime0	4780.6123717725
ontime1	4777.4714513719
ontime2	4780.6123717725
ontime3	4777.4714114964
ontime6	4780.612421602
l1events	119381

2.1.4 Events

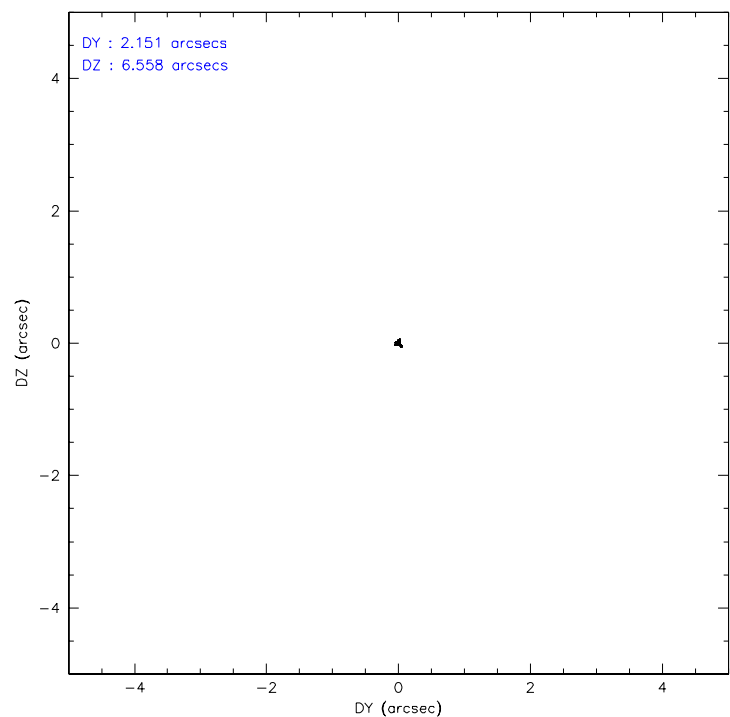
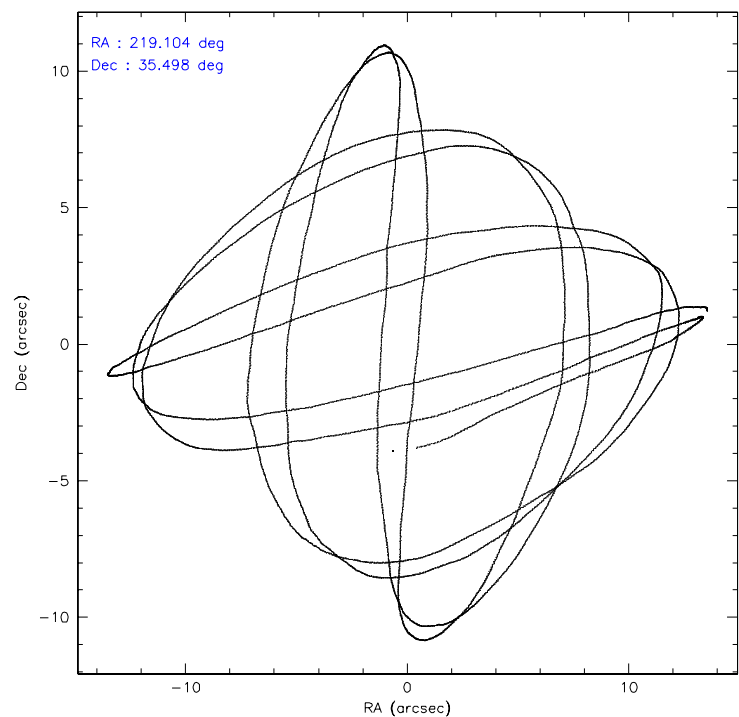
	ccd 0	ccd 1	ccd 2	ccd 3	ccd 6
level 1 events	23738	22323	25738	24585	22997
rejected events	21344	19901	23522	22361	20670
rejected %	89%	89%	91%	90%	89%

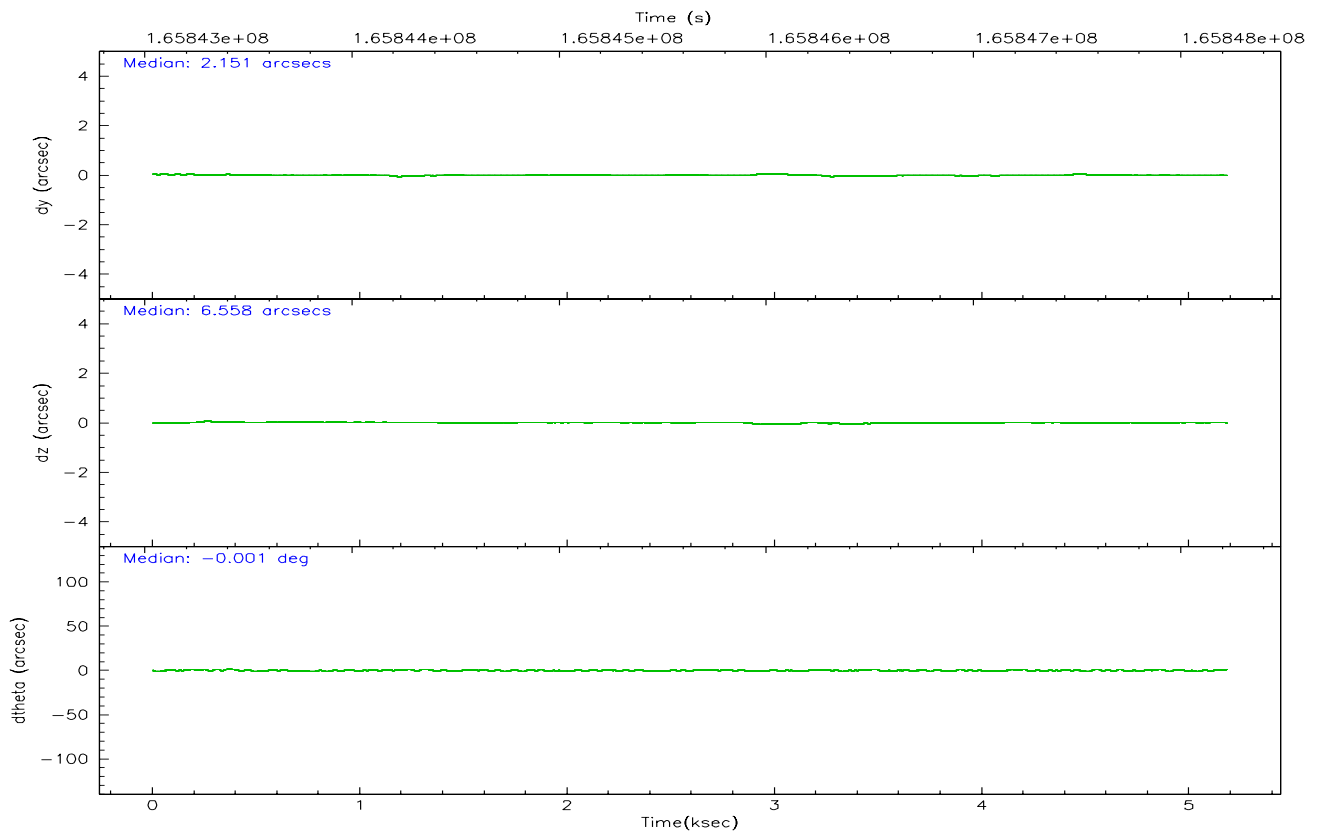
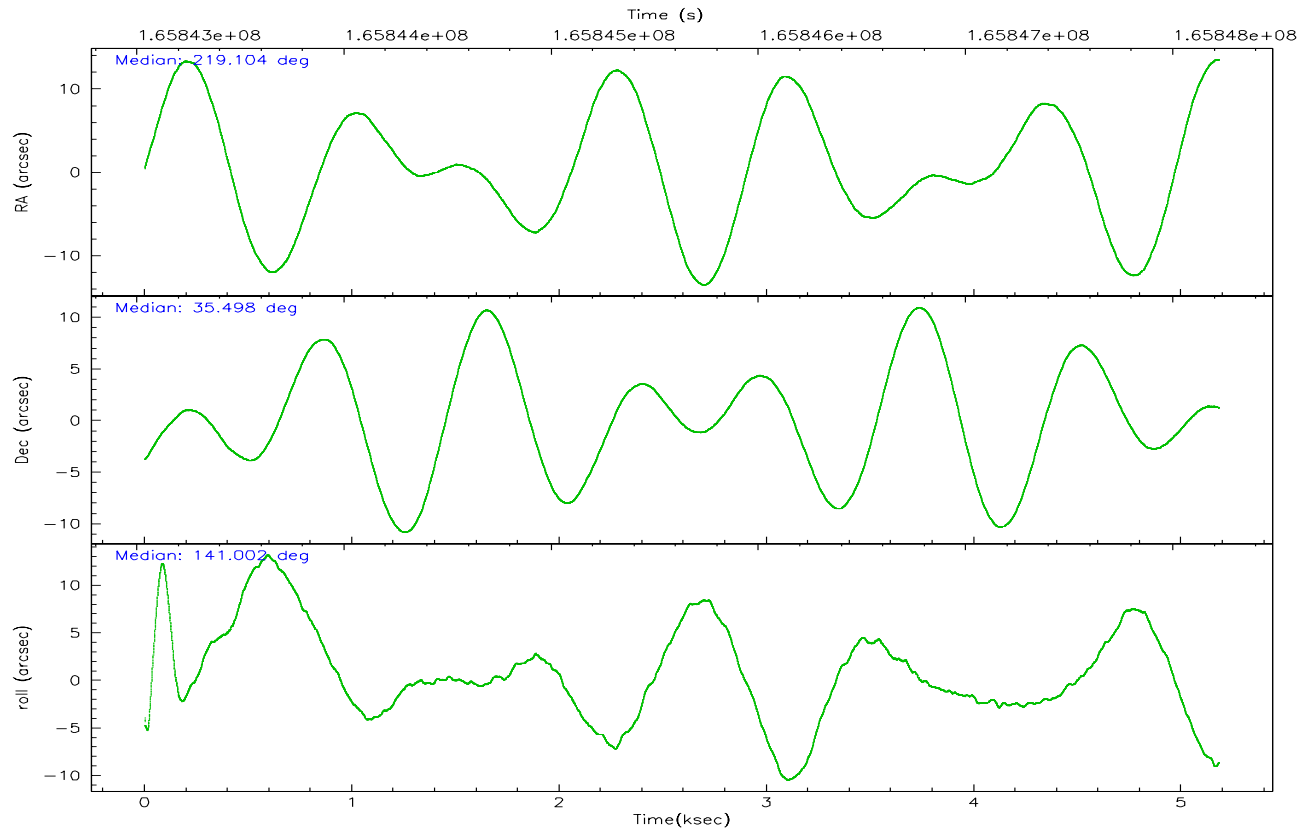
	ccd 0	ccd 1	ccd 2	ccd 3	ccd 6
grade 0 events	885	791	803	814	853
	3%	3%	3%	3%	3%
grade 1 events	15	18	19	16	11
	0%	0%	0%	0%	0%
grade 2 events	549	512	519	464	480
	2%	2%	2%	1%	2%
grade 3 events	285	314	269	254	283
	1%	1%	1%	1%	1%
grade 4 events	245	286	251	270	252
	1%	1%	0%	1%	1%
grade 5 events	681	831	655	770	799
	2%	3%	2%	3%	3%
grade 6 events	430	521	376	425	460
	1%	2%	1%	1%	2%
grade 7 events	20648	19050	22846	21572	19859
	86%	85%	88%	87%	86%

2.2 Compared Parameters

Parameter	Planned	Actual	Parameter	Planned	Actual
Instrument	ACIS	ACIS	Obspar format version number	6	6
Detector	ACIS-01236	ACIS-01236	Obspar file type	PREDICTED	ACTUAL
Grating	NONE	NONE	Obspar update status	NONE	UPDATED
Data mode	VFAINT	VFAINT	On-chip summing requested	N	N
Observation mode	POINTING	POINTING	Subarray requested	NONE	NONE
Pointing RA	219.137315	219.104151212877	Alternating exposures requested	N	N
Pointing Dec	35.493773	35.49792522156584	Primary exposure time	0.000000	3.1
Pointing Roll	140.782258	141.0101988470936			
SIM focus pos (mm)	-0.782348	-0.7809083437167272			
SIM defocus (mm)	0	0.001439871863259334			
SIM translation stage pos (mm)	-233.592463	-233.5874344608287			
SIM translation stage offset (mm)	0	-0.005018542100998502			
Observation start time	165843225.184000	165842849.54402			
Observation start date	2003-04-04T11:32:41	2003-04-04T11:27:29			
Observation end time	165848225.184000	165848394.28175			
Observation end date	2003-04-04T12:56:01	2003-04-04T12:59:54			
Read mode	TIMED	TIMED			

2.3 Aspect



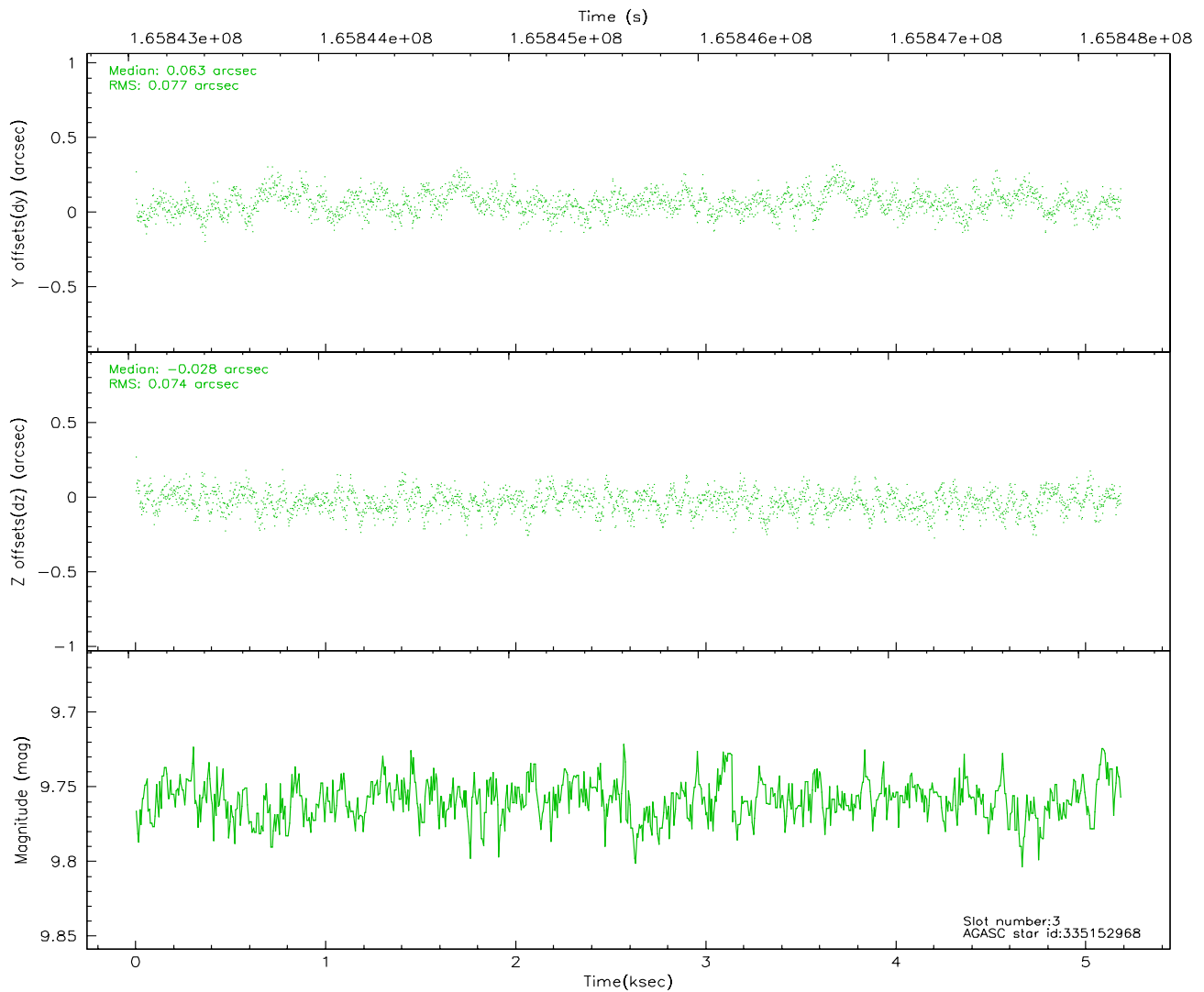
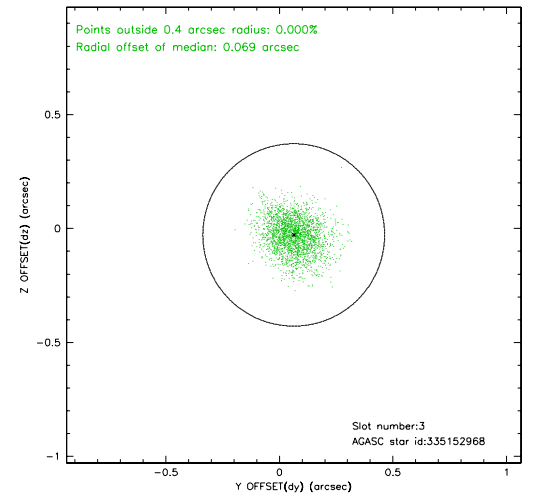
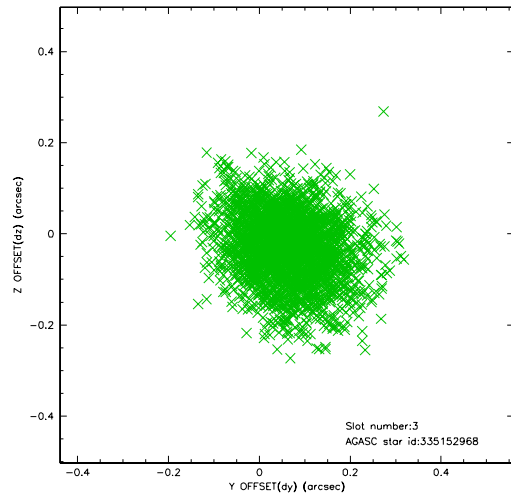


Slot Statistics

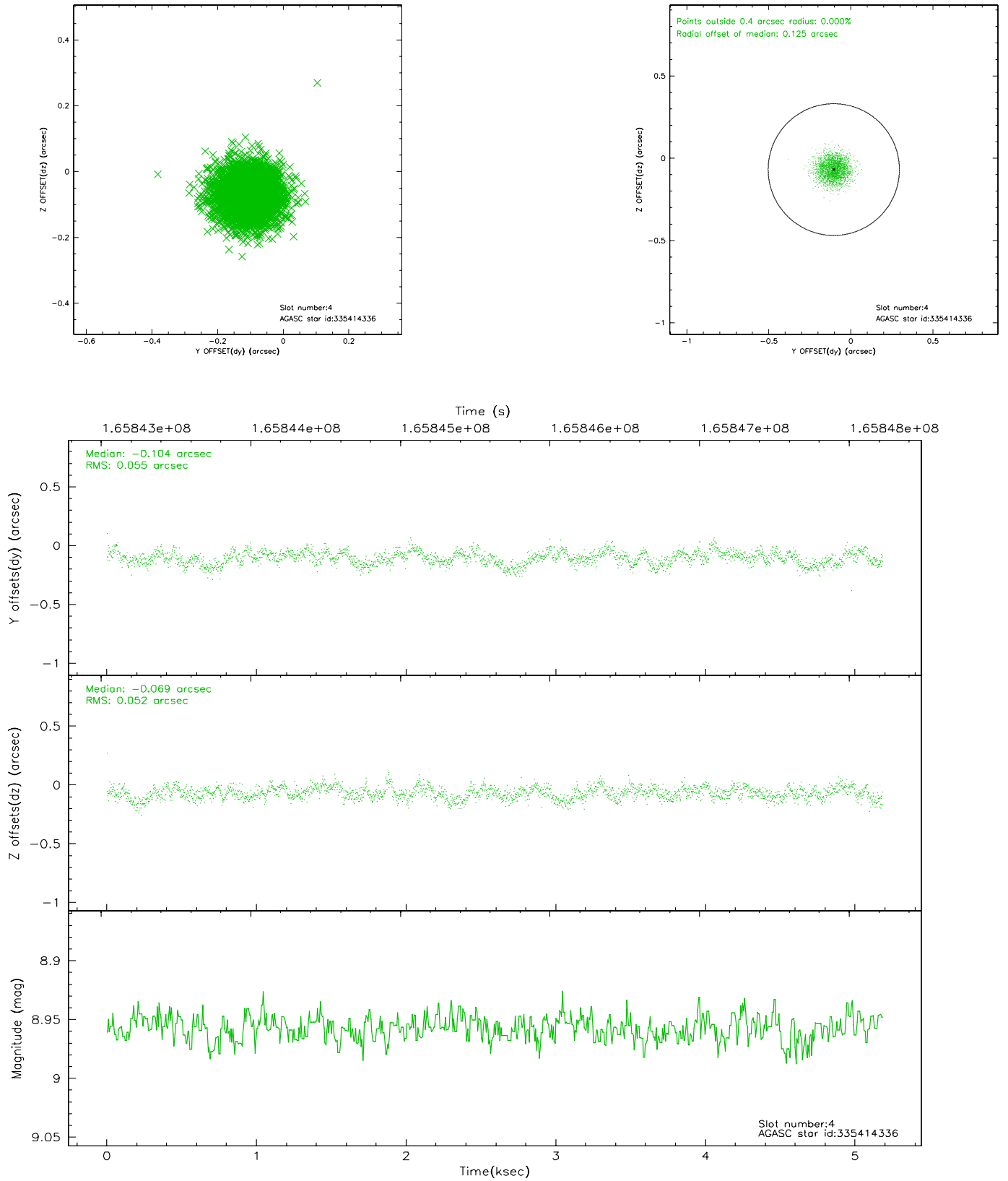
slot	status	id	mag	n_pts	med_dy	med_dz	dr1	dr2	ra	dec	mean_y	mean_z
0	FID	ACIS-I-1	7.25	1264	-0.009	0.022	0.006	0.010	0.000000	0.000000	937.64	-829.94
1	FID	ACIS-I-5	7.24	1264	-0.046	0.044	0.006	0.009	0.000000	0.000000	-1809.81	1067.05
2	FID	ACIS-I-6	7.26	1264	-0.035	0.005	0.006	0.010	0.000000	0.000000	401.95	1712.79
3	GUIDE	335152968	9.76	2529	0.063	-0.028	0.114	0.189	219.446087	34.867883	-2130.37	1168.24
4	GUIDE	335414336	8.96	2528	-0.104	-0.069	0.081	0.128	218.979022	35.090910	-556.44	1419.01
5	GUIDE	335546608	10.07	2510	0.096	0.025	0.113	0.190	219.906522	35.245587	-2311.30	-743.71
6	GUIDE	335549864	7.52	2529	-0.041	-0.062	0.062	0.101	219.286726	35.929745	654.60	-1491.34
7	GUIDE	335554008	9.82	2522	-0.019	0.139	0.114	0.192	219.383422	35.471863	-607.82	-395.81

2.4 Star Slots

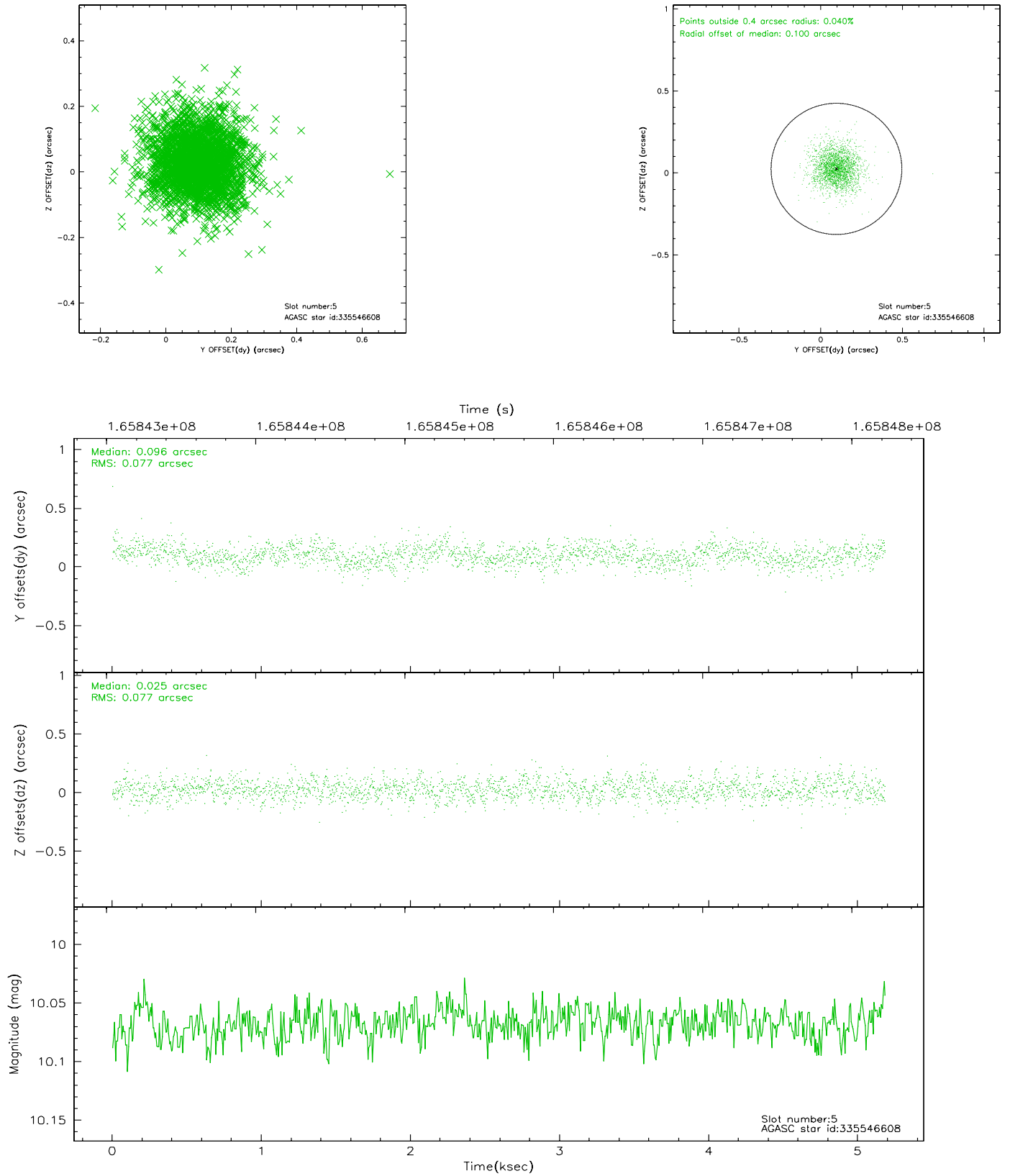
2.4.1 Slot 3



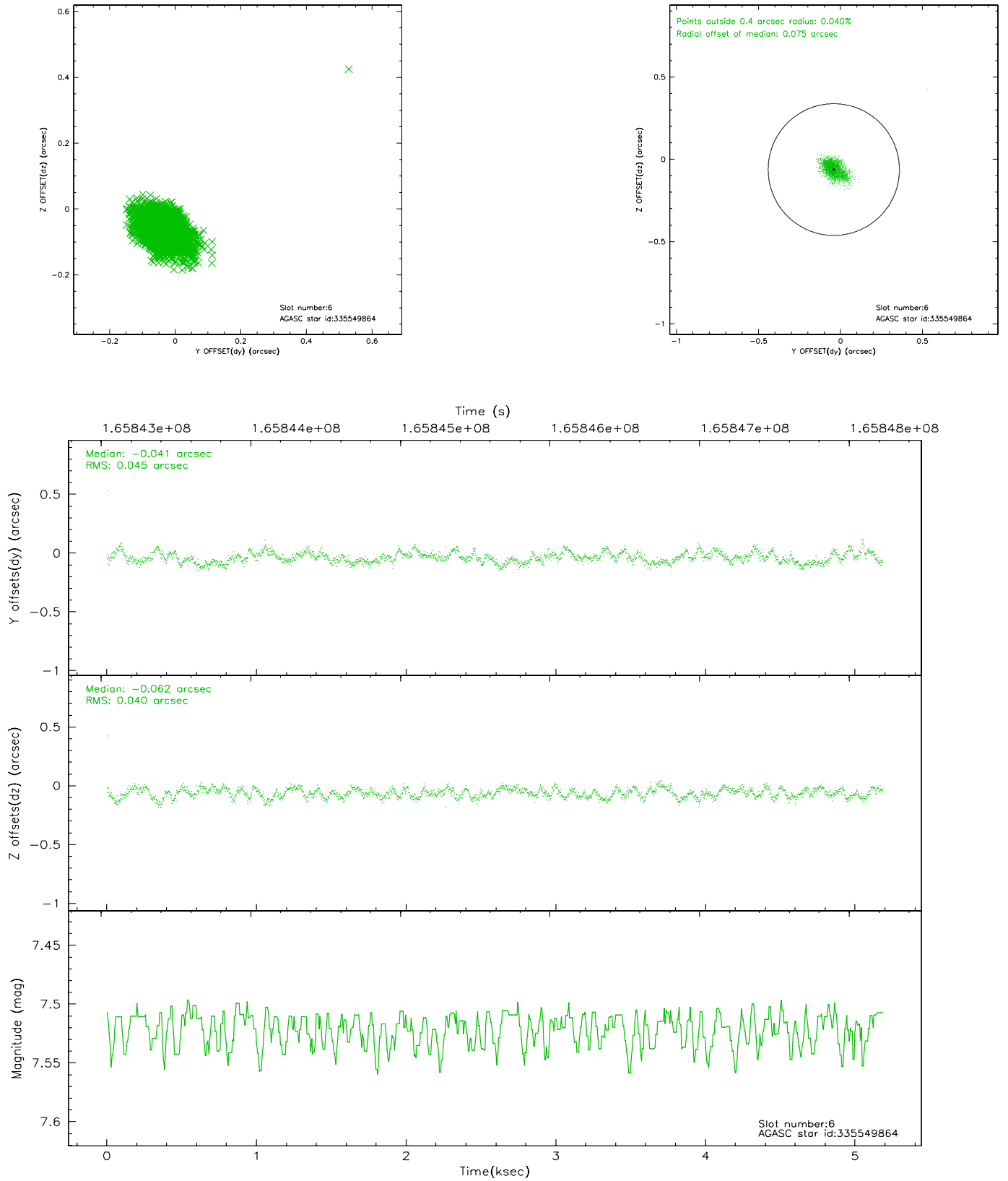
2.4.2 Slot 4



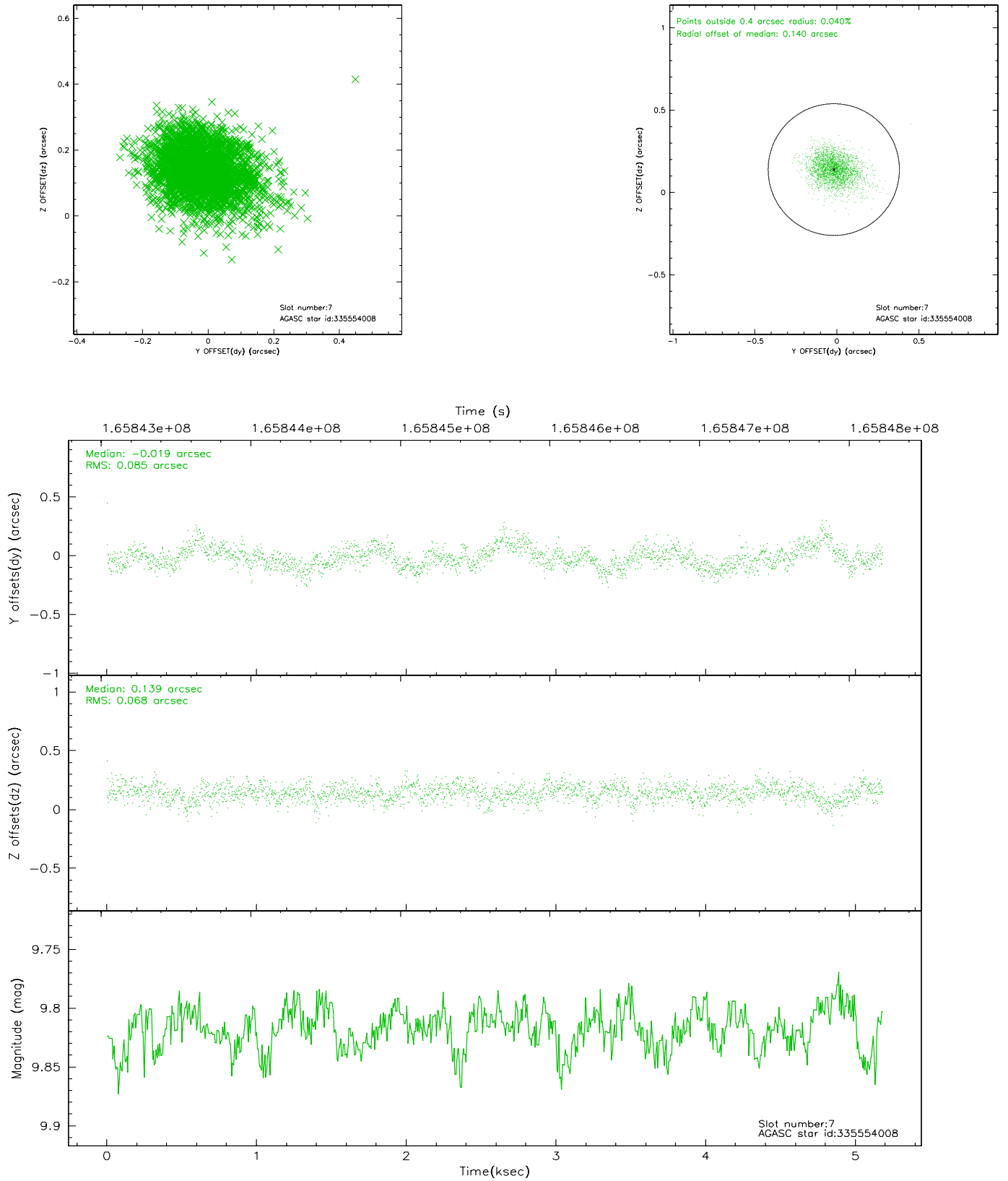
2.4.3 Slot 5



2.4.4 Slot 6

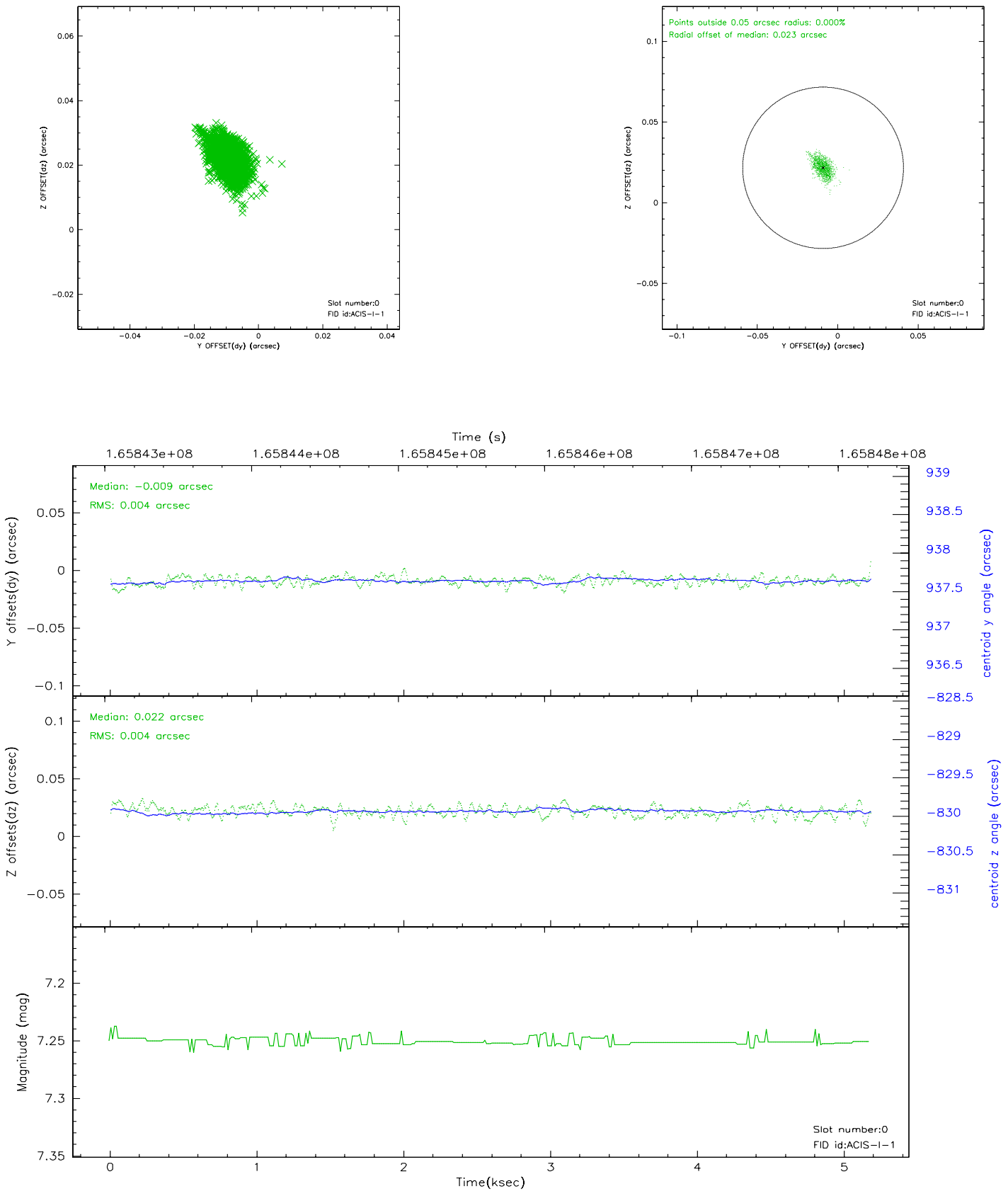


2.4.5 Slot 7

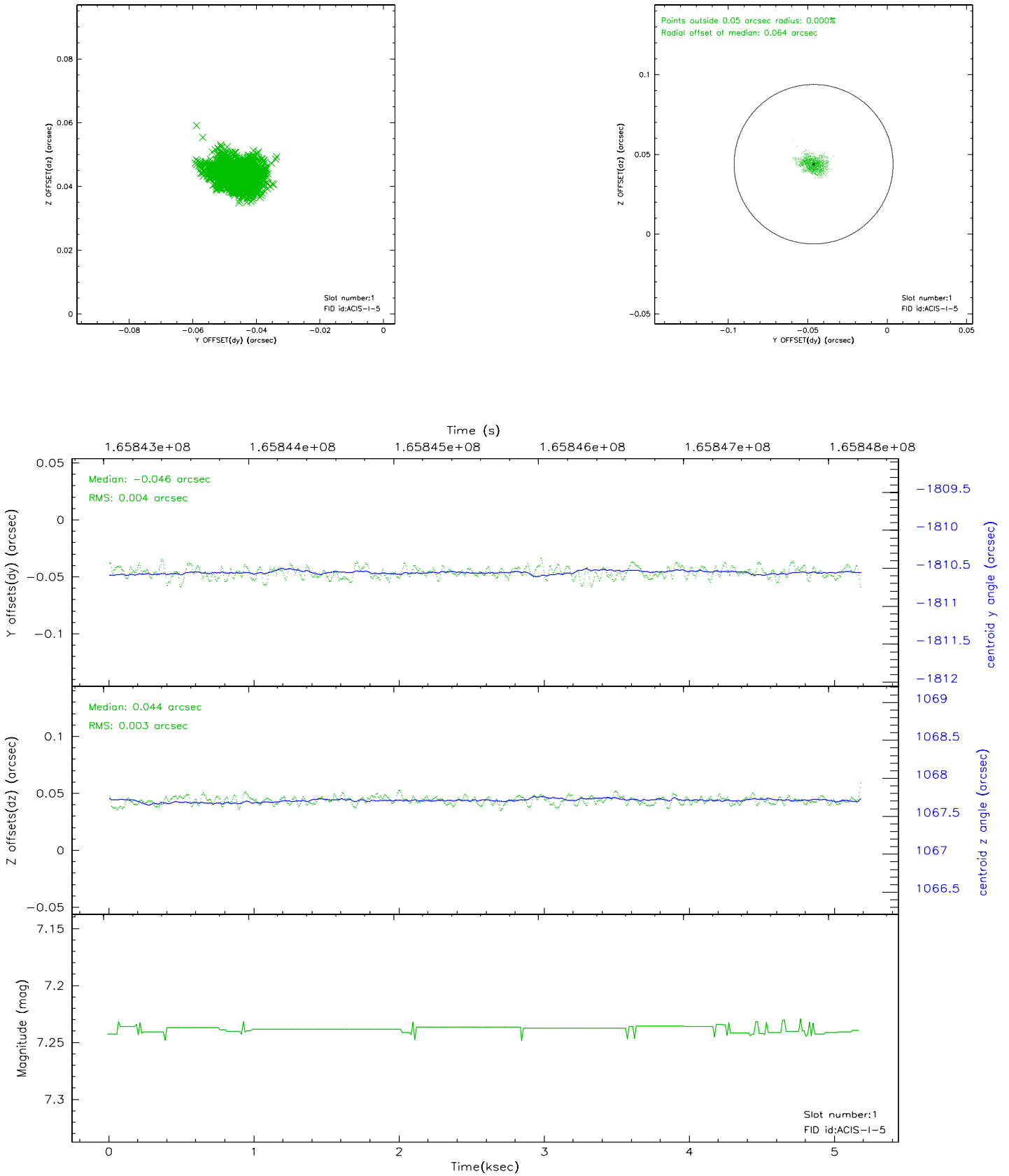


2.5 FID Slots

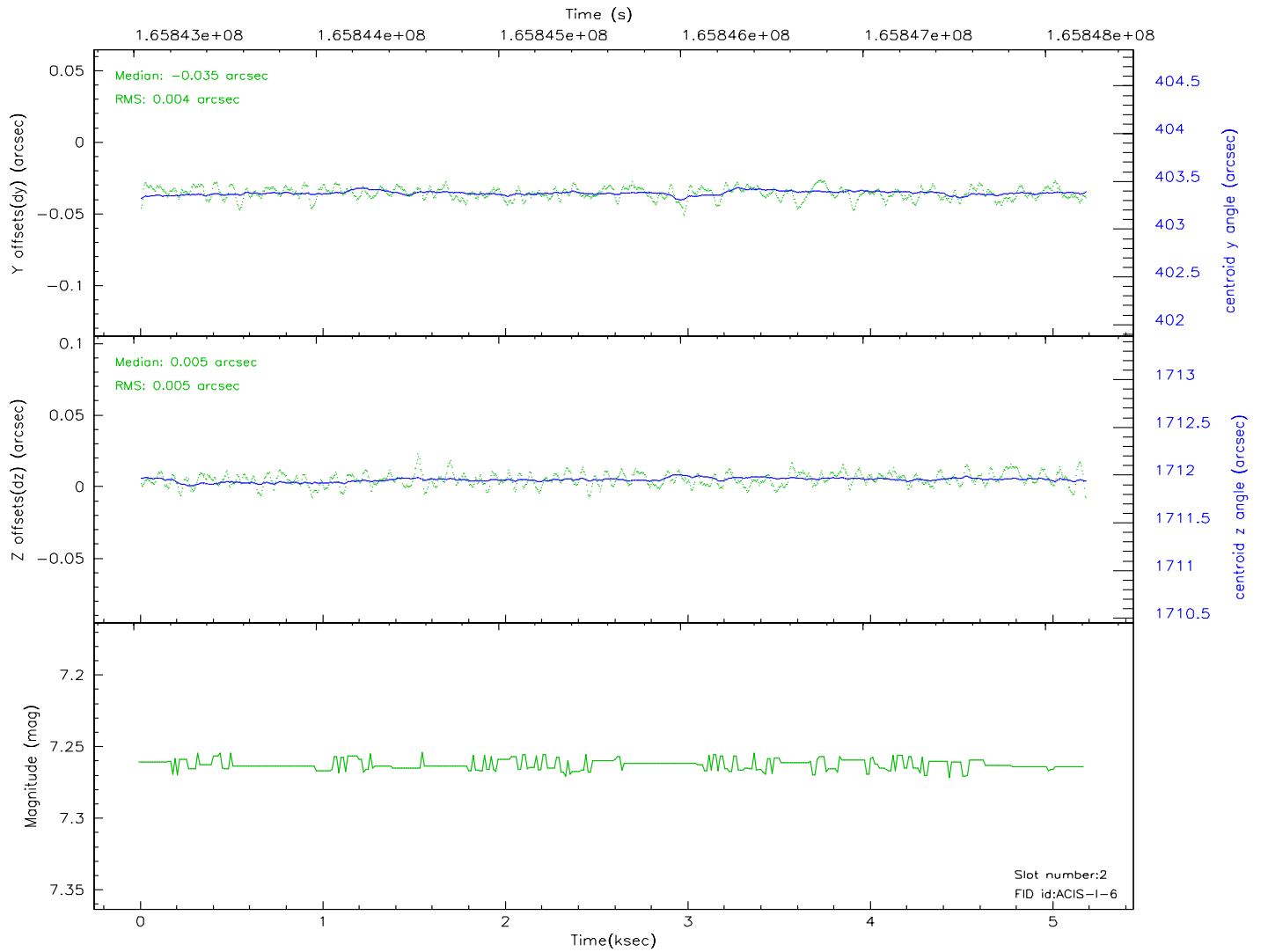
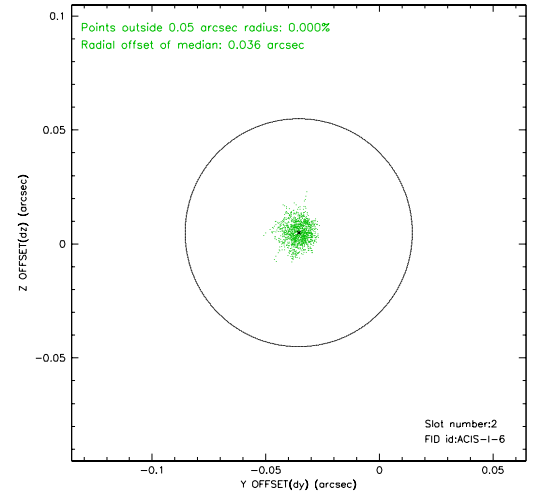
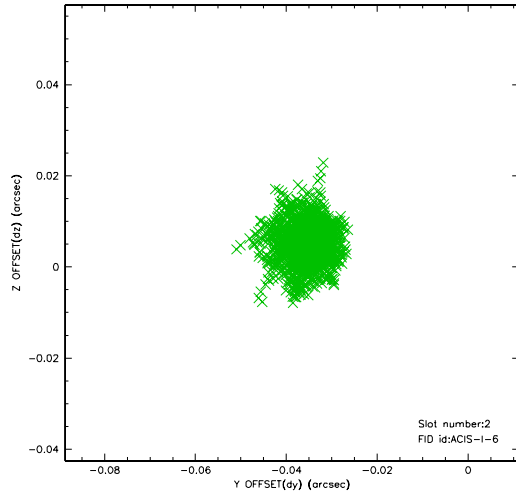
2.5.1 Slot 0



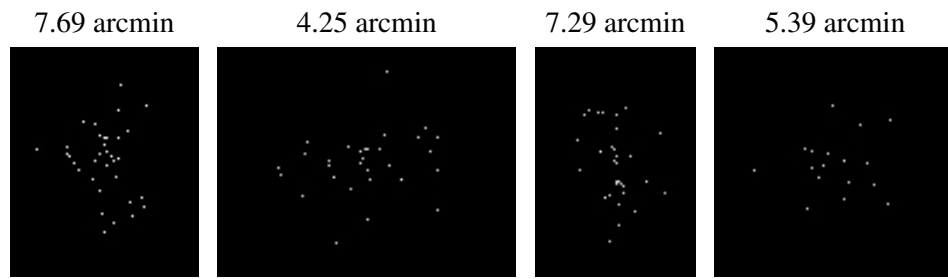
2.5.2 Slot 1



2.5.3 Slot 2



3 Point Sources



A Summary

A.1 Status

V&V Scientist	Jen Lauer
V&V Date (YYYY-MM-DD)	2006.07.30
V&V Edition	1
V&V Disposition and Status	OK
V&V Charge Time	4.773

A.2 Comments