

V&V Reference Report

L2 ASCDS Version : 7.6.8

Observation 3608 - L2 Version 001
Chandra X-Ray Center

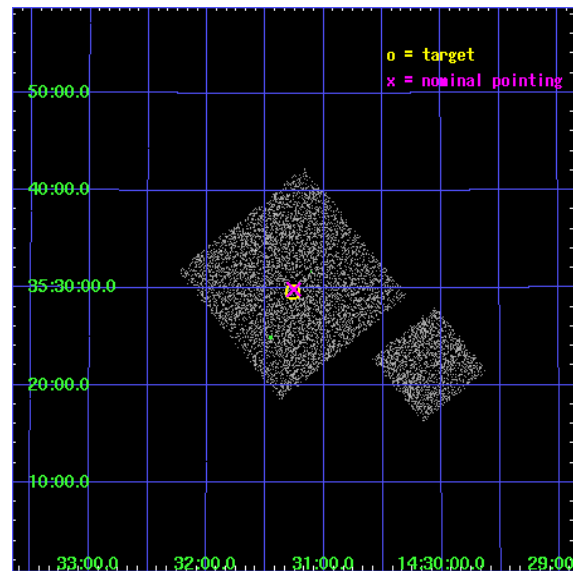
L2 Processing Date : Jul 29 2006

Contents

1	Front	2
2	OBI	3
2.1	OBI	3
2.1.1	Images	3
2.1.2	Bias	3
2.1.3	Parameters	4
2.1.4	Events	4
2.2	Compared Parameters	5
2.3	Aspect	6
2.4	Star Slots	9
2.4.1	Slot 3	9
2.4.2	Slot 4	10
2.4.3	Slot 5	11
2.4.4	Slot 6	12
2.4.5	Slot 7	13
2.5	FID Slots	14
2.5.1	Slot 0	14
2.5.2	Slot 1	15
2.5.3	Slot 2	16
3	Point Sources	17
A	Summary	18
A.1	Status	18
A.2	Comments	18

1 Front

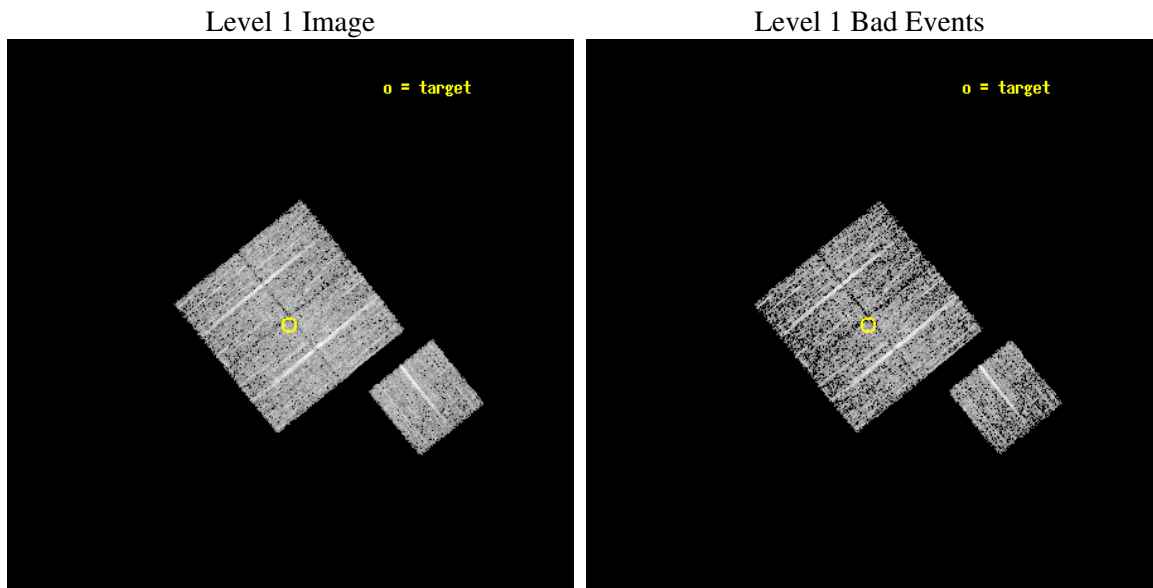
seq_num	900208
obs_id	3608
title	CHANDRA LARGE SCALE SURVEY OF THE NOAO BOOTES DEEP FIELD
observer	Dr. Stephen Murray
object	NOAO FIELD F58
dtcycle	0
cycle	P
ra_targ	217.816997
dec_targ	35.493858
ra_nom	217.81428048042
dec_nom	35.497866925587
roll_nom	141.01021158434
revision	2
ontime	4674.7999910116
livetime	4613.7202875914
ontime0	4668.5180305243
ontime1	4674.7999910116
ontime2	4674.7999910116
ontime3	4674.7999910116
ontime6	4674.7999910116
l2events	9292



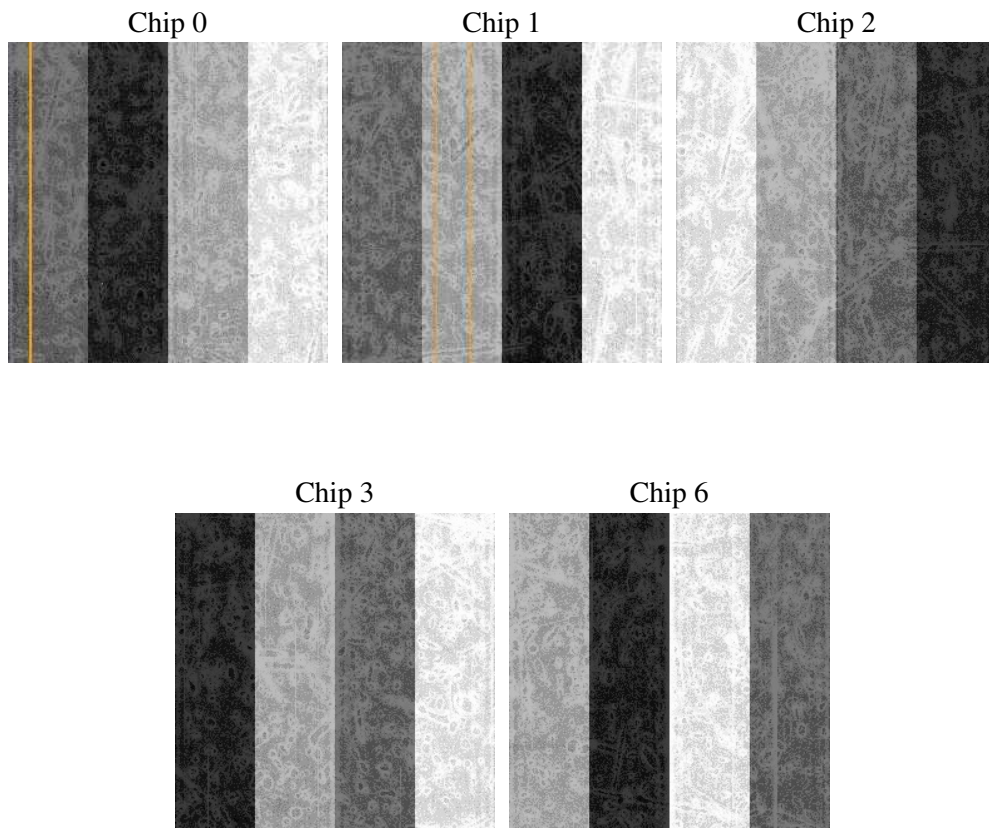
2 OBI

2.1 OBI

2.1.1 Images



2.1.2 Bias



2.1.3 Parameters

obi_num	1
ascdsver	7.6.8
caldsver	3.2.2
date	2006-07-29T21:29:18
revision	2

sched_exp_time	4900.000000
ontime	4680.104357332
ontime0	4673.8223968446
ontime1	4680.1043772399
ontime2	4680.1043772399
ontime3	4680.104357332
ontime6	4680.104357332
l1events	117402

2.1.4 Events

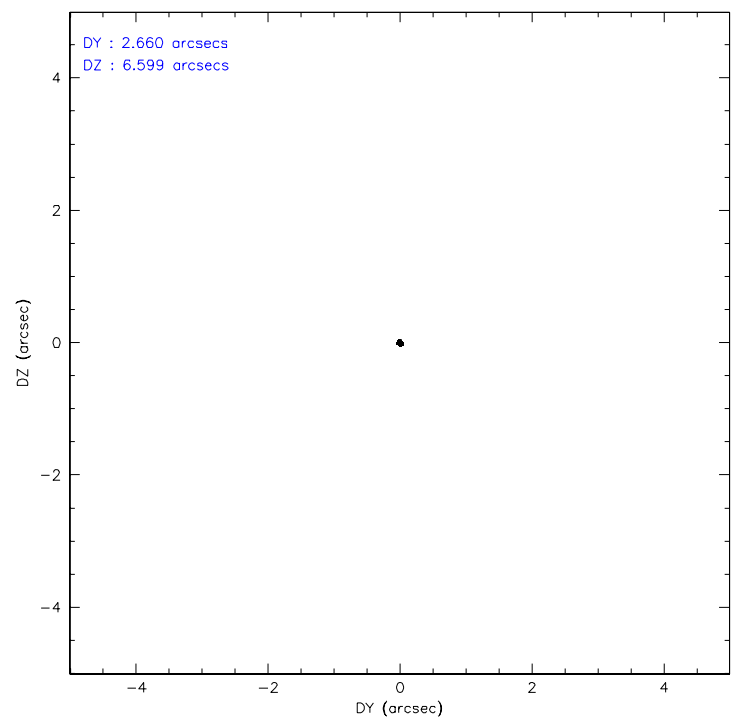
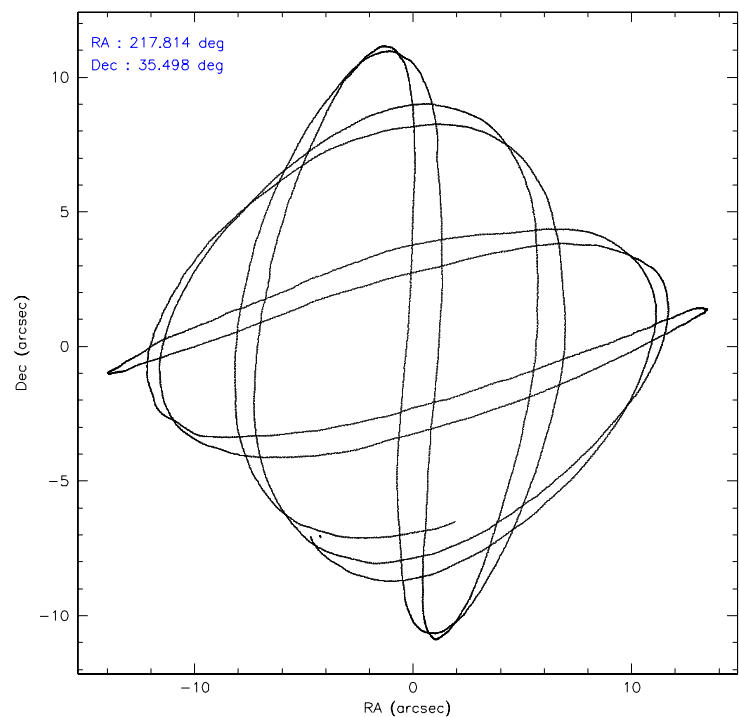
	ccd 0	ccd 1	ccd 2	ccd 3	ccd 6
level 1 events	21957	22102	26581	23729	23033
rejected events	19705	19803	24360	21629	20649
rejected %	89%	89%	91%	91%	89%

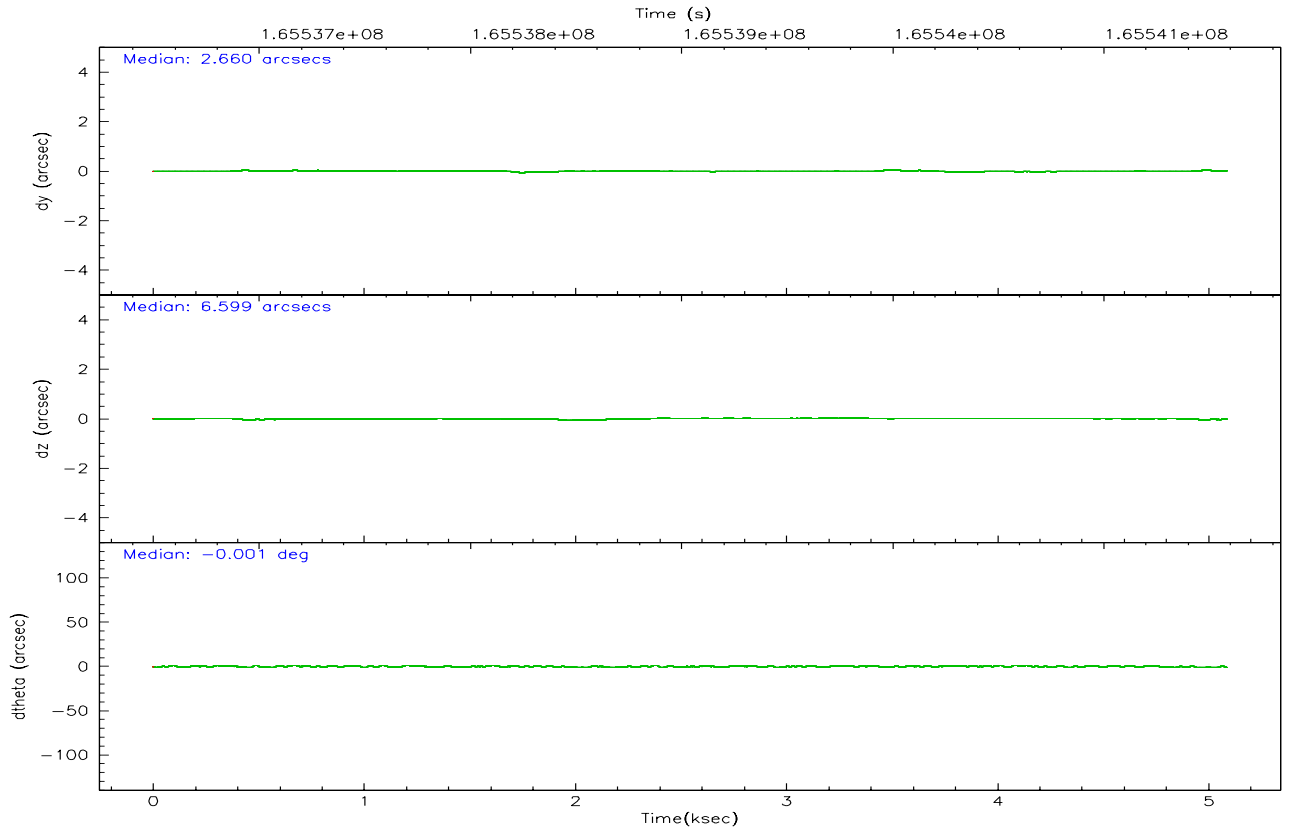
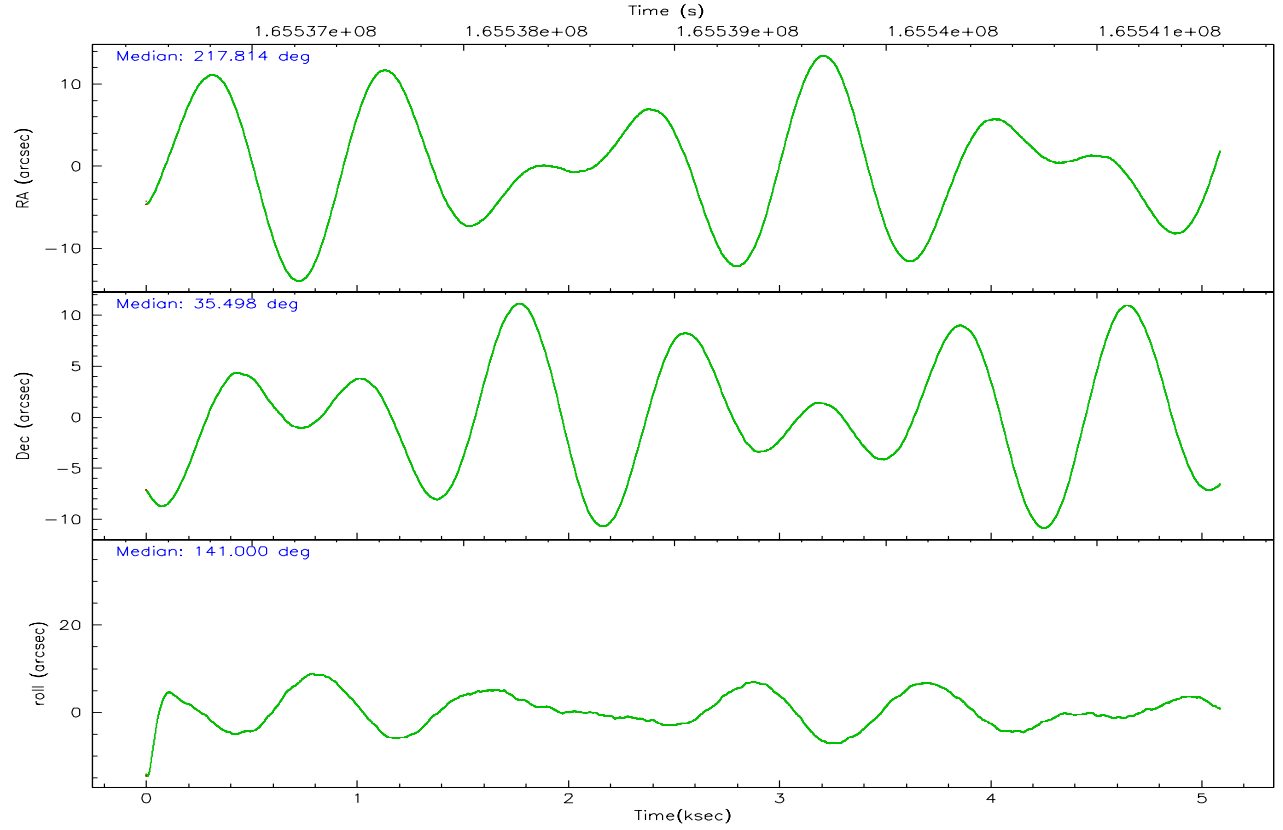
	ccd 0	ccd 1	ccd 2	ccd 3	ccd 6
grade 0 events	815	826	835	756	883
	3%	3%	3%	3%	3%
grade 1 events	11	8	11	9	11
	0%	0%	0%	0%	0%
grade 2 events	490	507	558	458	476
	2%	2%	2%	1%	2%
grade 3 events	306	297	225	284	311
	1%	1%	0%	1%	1%
grade 4 events	240	243	237	231	274
	1%	1%	0%	0%	1%
grade 5 events	694	737	693	758	737
	3%	3%	2%	3%	3%
grade 6 events	404	429	366	372	441
	1%	1%	1%	1%	1%
grade 7 events	18997	19055	23656	20861	19900
	86%	86%	88%	87%	86%

2.2 Compared Parameters

Parameter	Planned	Actual	Parameter	Planned	Actual
Instrument	ACIS	ACIS	Obspar format version number	6	6
Detector	ACIS-01236	ACIS-01236	Obspar file type	PREDICTED	ACTUAL
Grating	NONE	NONE	Obspar update status	NONE	UPDATED
Data mode	VFAINT	VFAINT	On-chip summing requested	N	N
Observation mode	POINTING	POINTING	Subarray requested	NONE	NONE
Pointing RA	217.847559	217.8142804804243	Alternating exposures requested	N	N
Pointing Dec	35.493773	35.49786692558696	Primary exposure time	0.000000	3.1
Pointing Roll	140.782250	141.0102115843444			
SIM focus pos (mm)	-0.782348	-0.7809083437167272			
SIM defocus (mm)	0	0.001439871863259334			
SIM translation stage pos (mm)	-233.592463	-233.5874344608287			
SIM translation stage offset (mm)	0	-0.005018542100998502			
Observation start time	165536684.184000	165536307.90608			
Observation start date	2003-03-31T22:23:40	2003-03-31T22:18:27			
Observation end time	165541584.184000	165541787.55632			
Observation end date	2003-03-31T23:45:20	2003-03-31T23:49:47			
Read mode	TIMED	TIMED			

2.3 Aspect



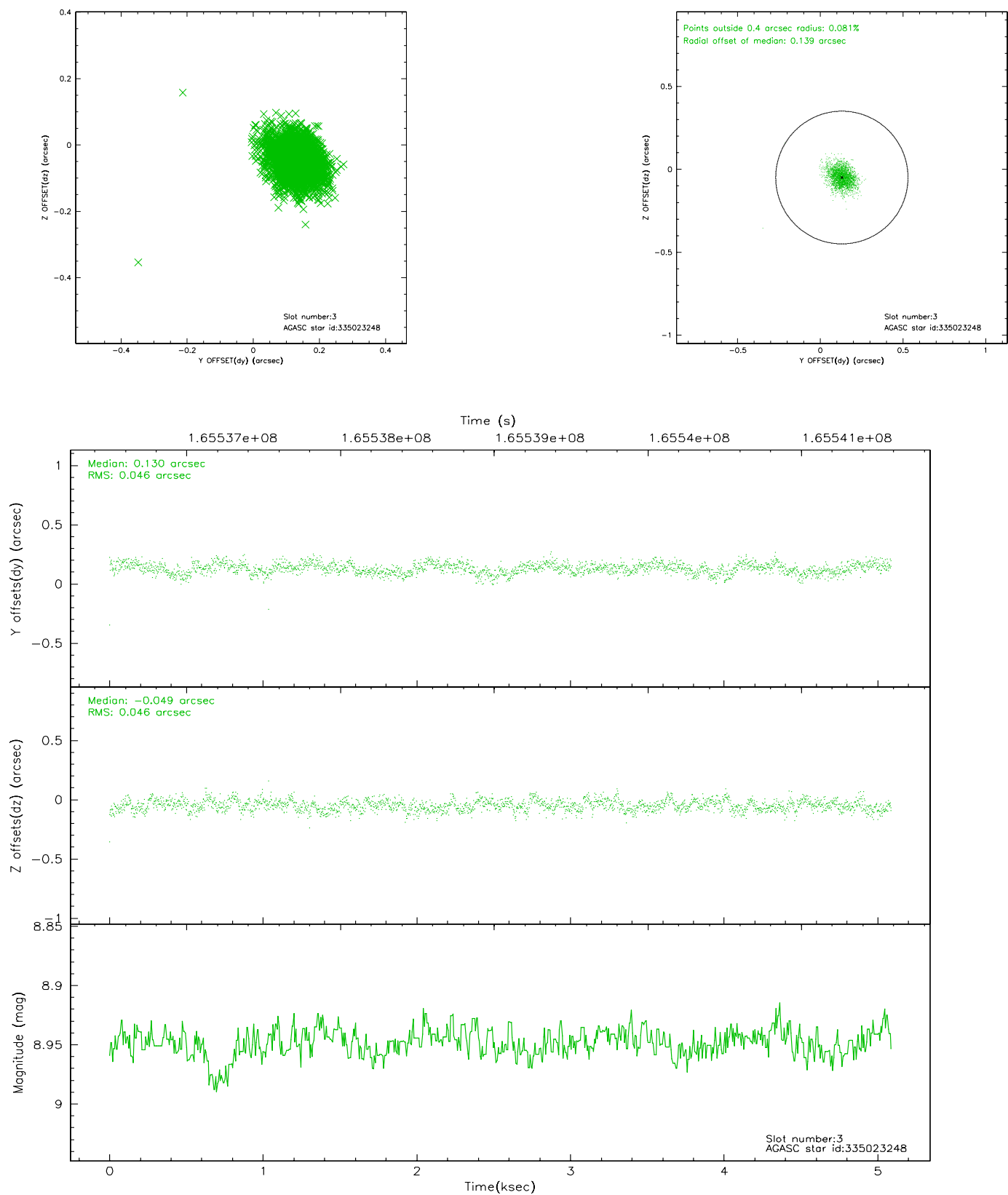


Slot Statistics

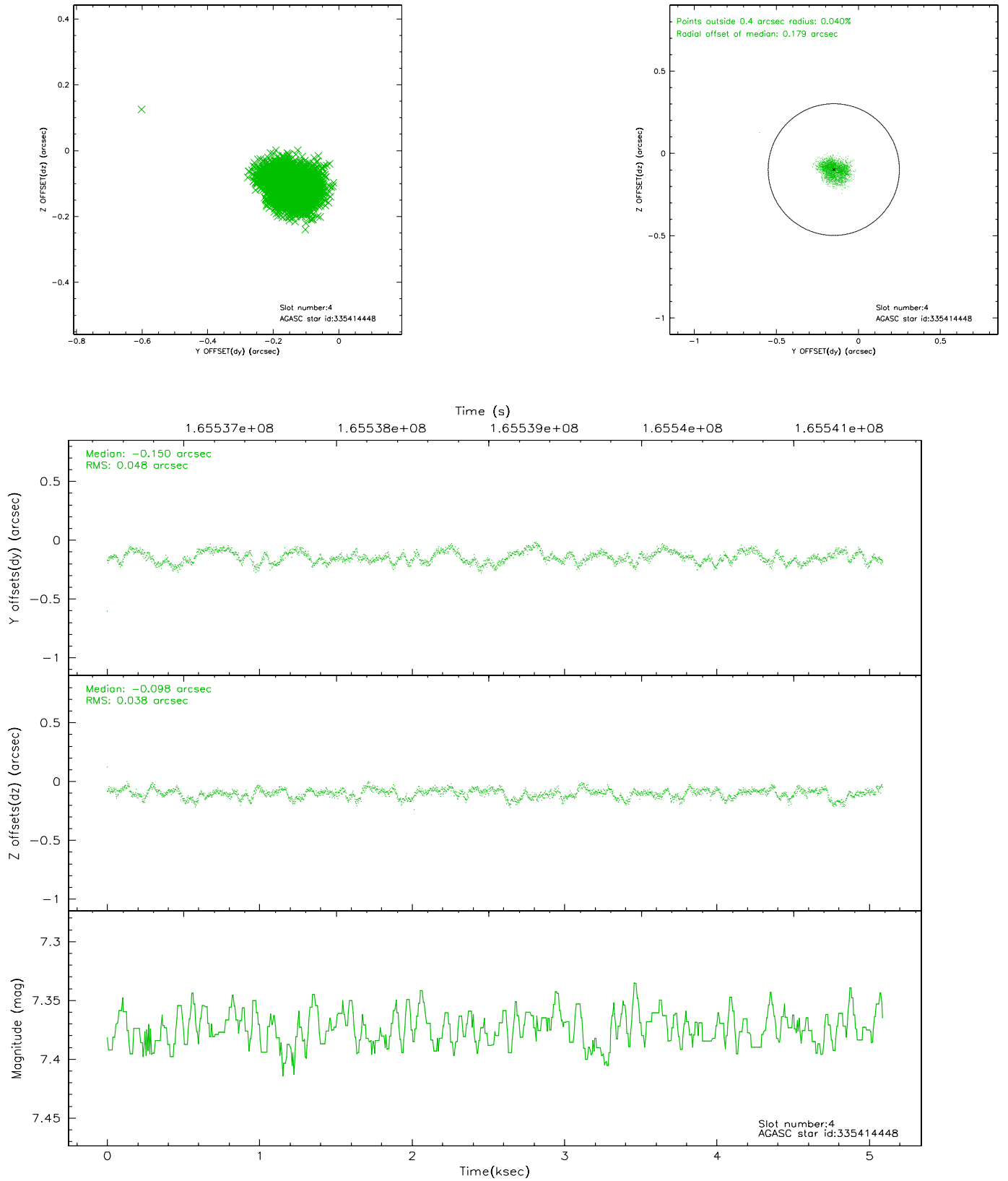
slot	status	id	mag	n_pts	med_dy	med_dz	dr1	dr2	ra	dec	mean_y	mean_z
0	FID	ACIS-I-1	7.24	1242	-0.006	0.020	0.005	0.009	0.000000	0.000000	937.12	-829.98
1	FID	ACIS-I-5	7.24	1242	-0.055	0.045	0.006	0.010	0.000000	0.000000	-1810.34	1066.99
2	FID	ACIS-I-6	7.26	1242	-0.030	0.005	0.006	0.011	0.000000	0.000000	401.40	1712.77
3	GUIDE	335023248	8.95	2483	0.130	-0.049	0.067	0.111	217.634832	34.944512	-763.40	1927.89
4	GUIDE	335414448	7.37	2483	-0.150	-0.098	0.066	0.101	216.992261	35.577204	2136.22	1343.18
5	GUIDE	335417968	9.42	2482	-0.061	0.071	0.165	0.242	217.358149	35.055285	122.28	2132.53
6	GUIDE	335421608	9.23	2483	0.068	-0.018	0.100	0.164	217.691874	36.359353	2321.14	-2128.13
7	GUIDE	335421696	8.94	2482	-0.003	0.079	0.077	0.128	218.045699	35.772449	187.48	-1144.64

2.4 Star Slots

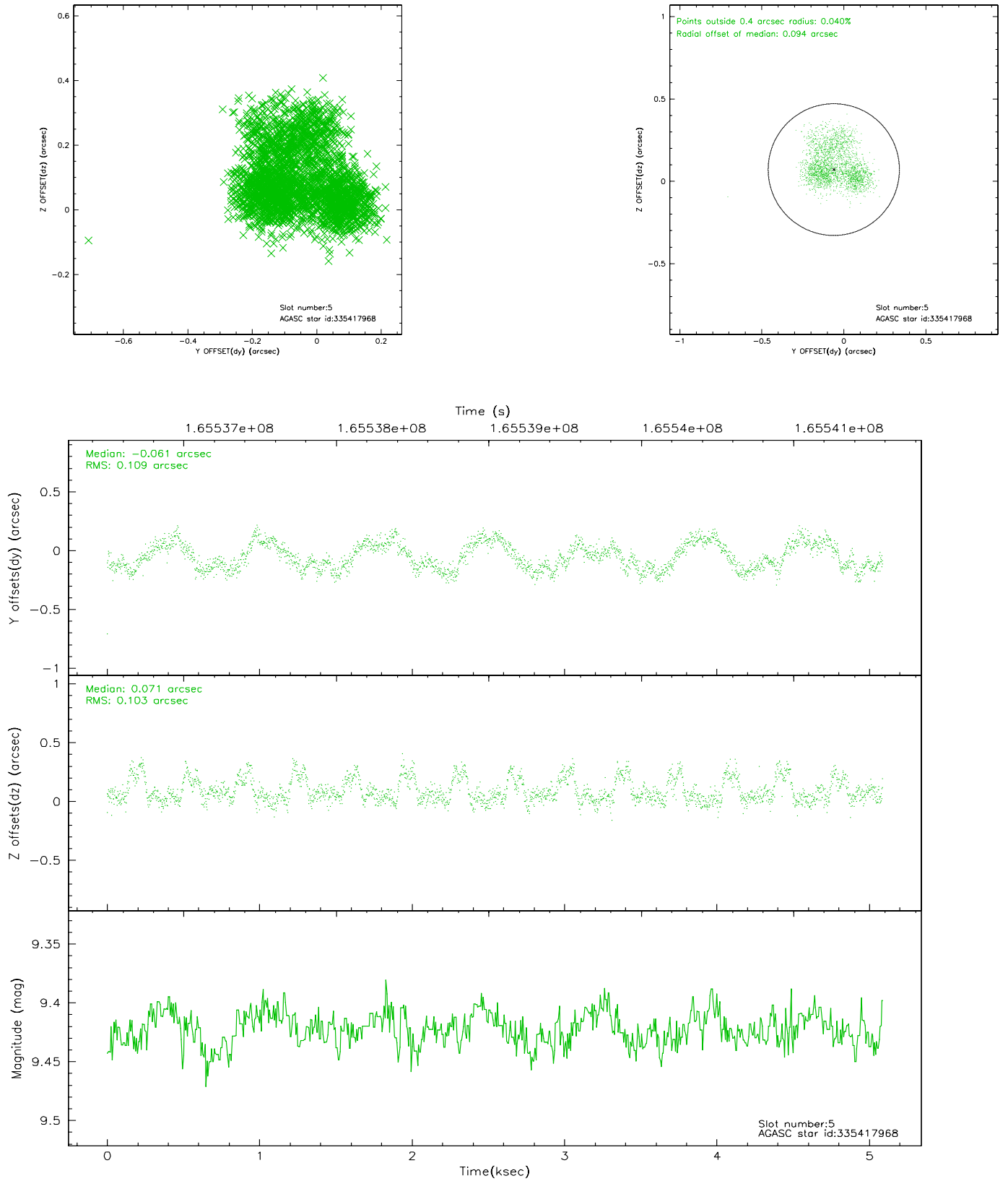
2.4.1 Slot 3



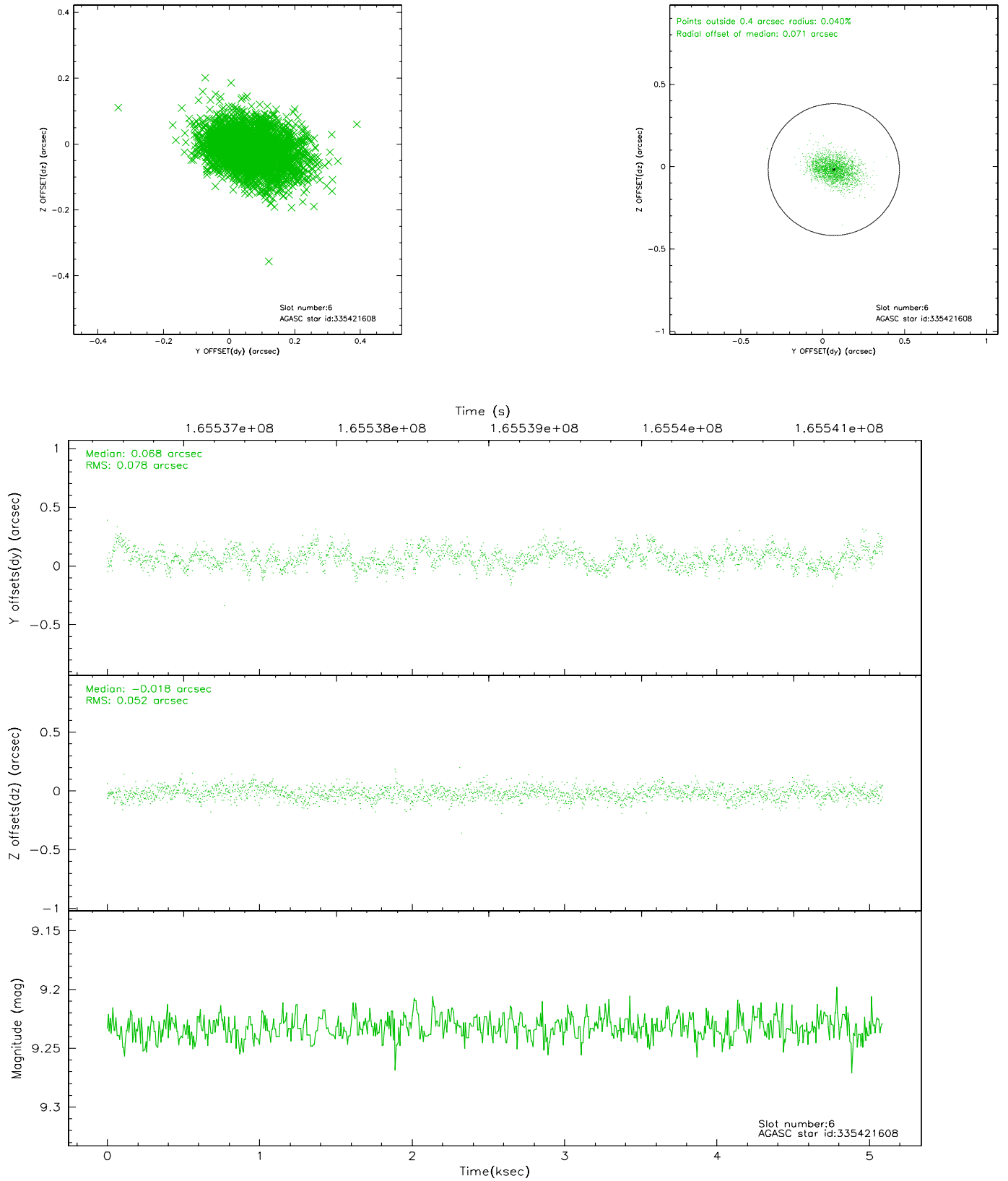
2.4.2 Slot 4



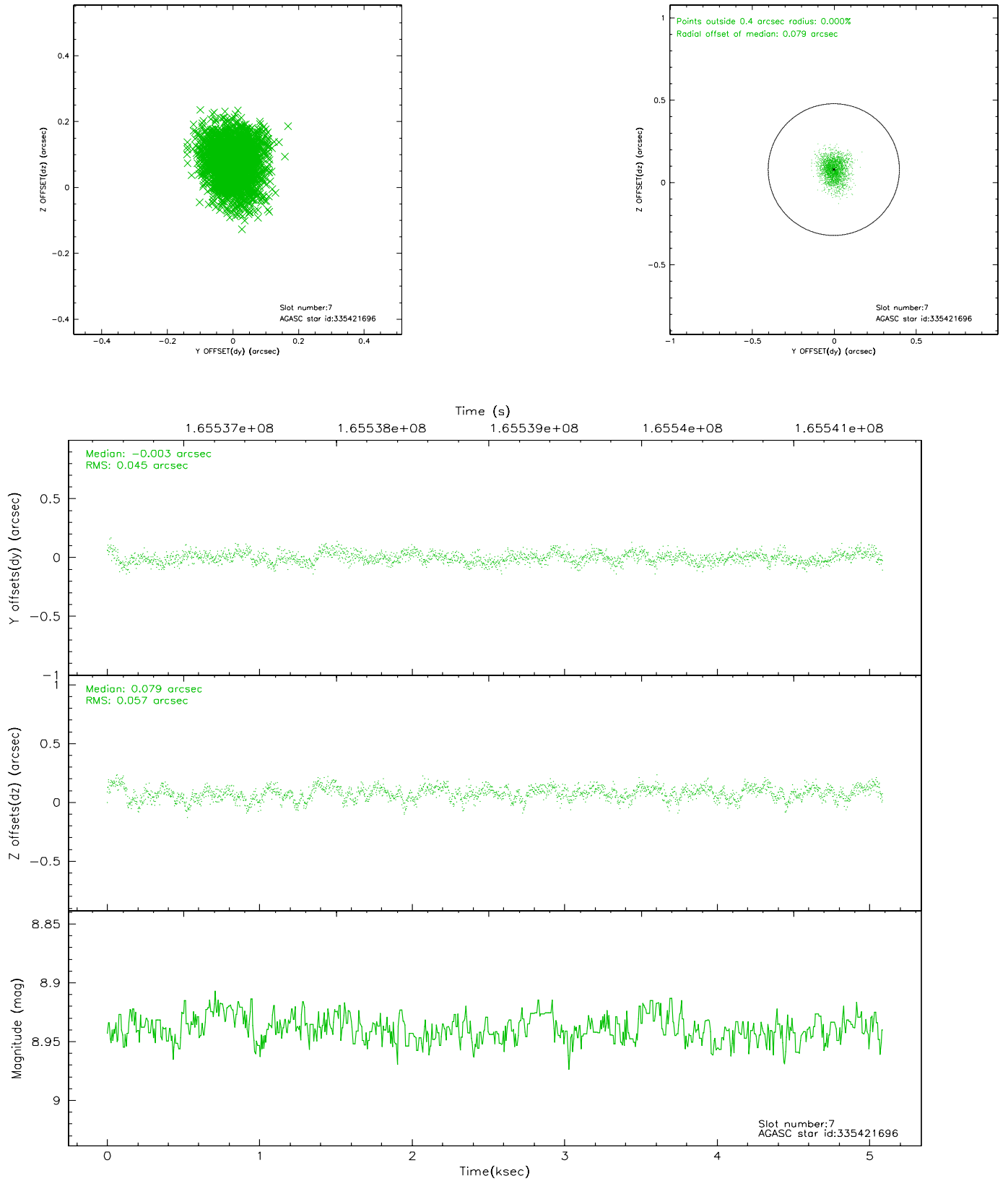
2.4.3 Slot 5



2.4.4 Slot 6

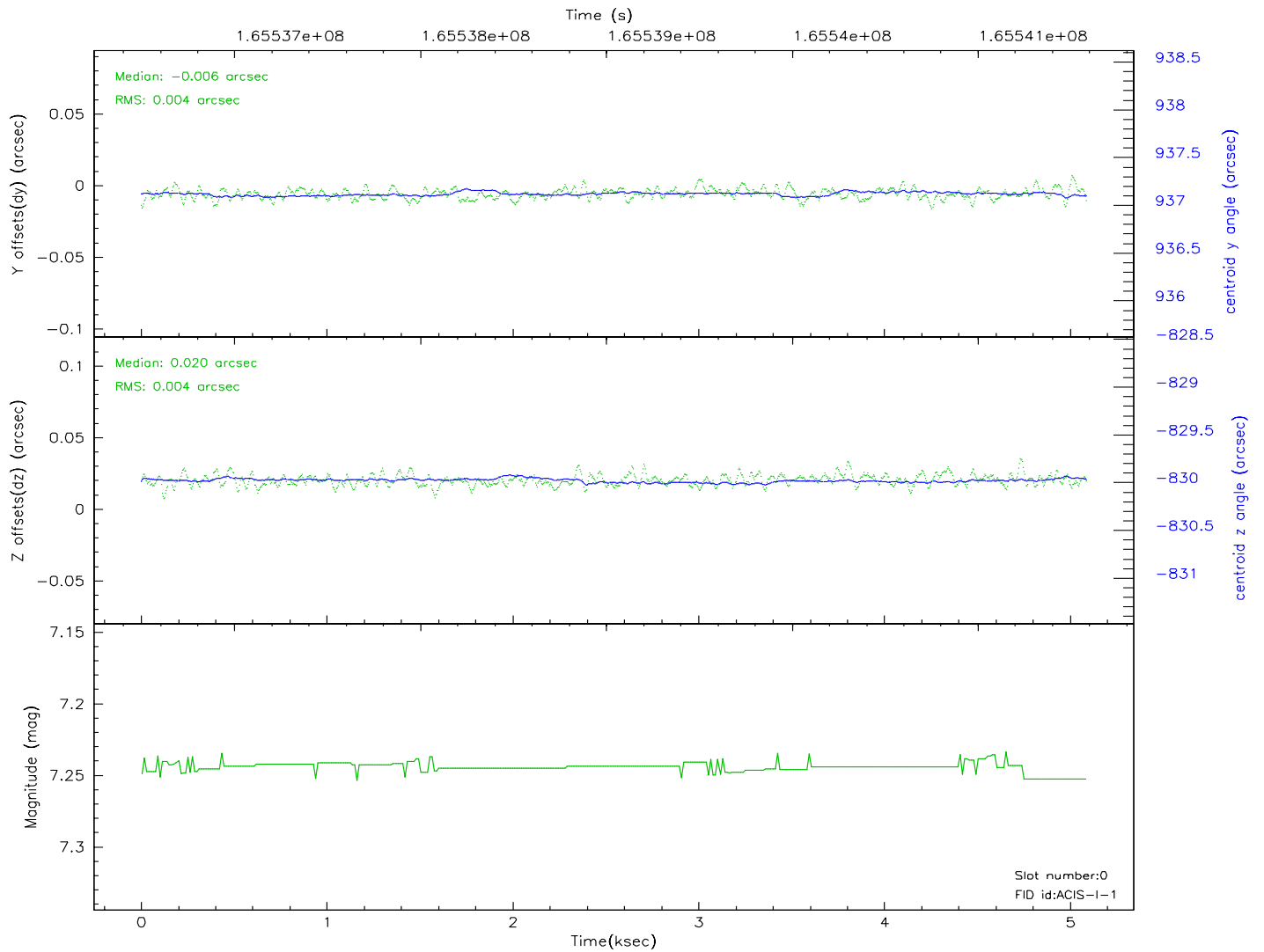
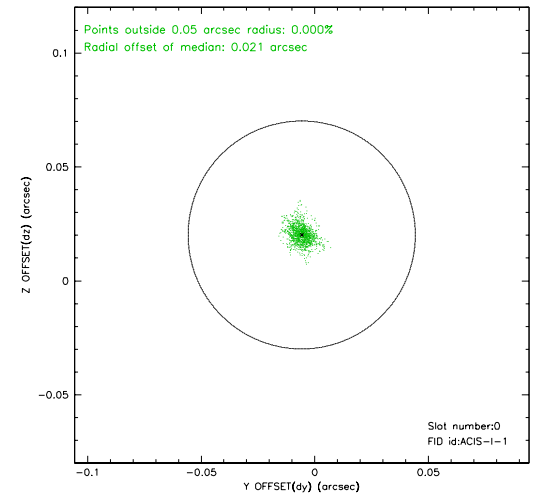
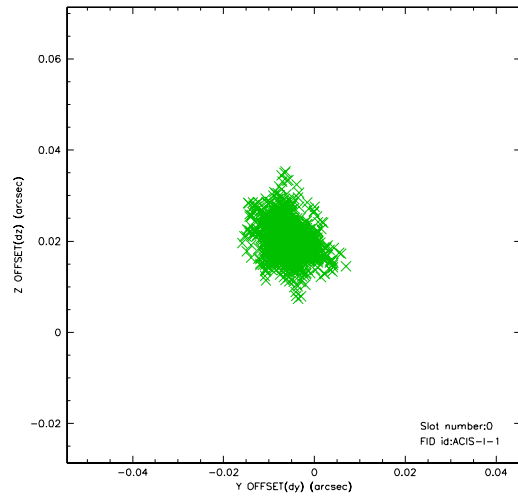


2.4.5 Slot 7

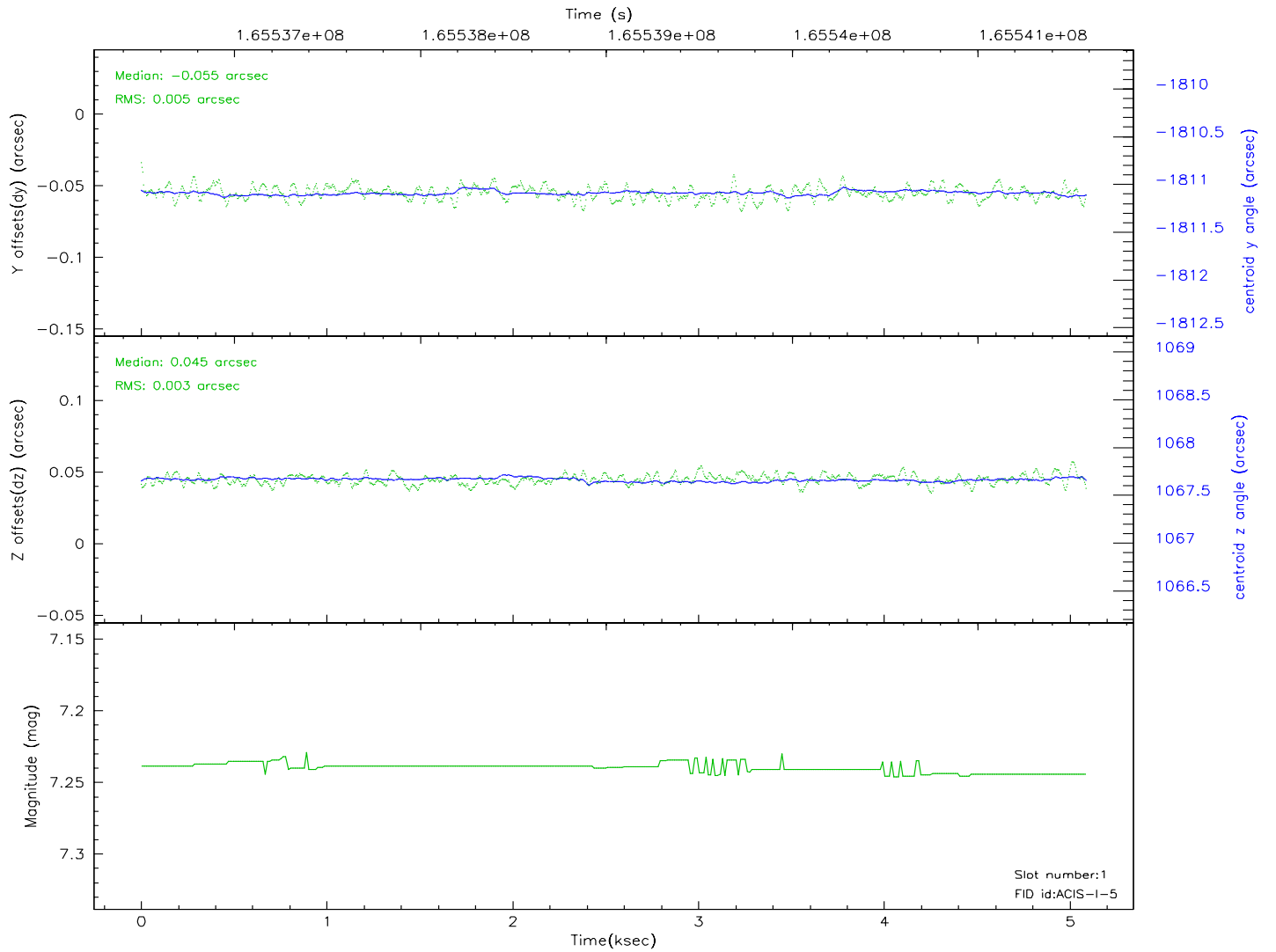
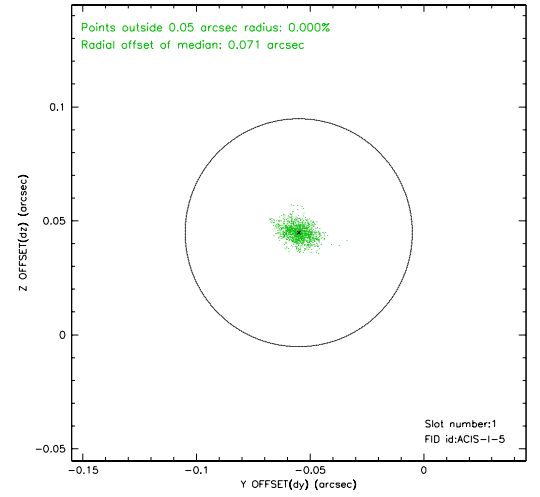
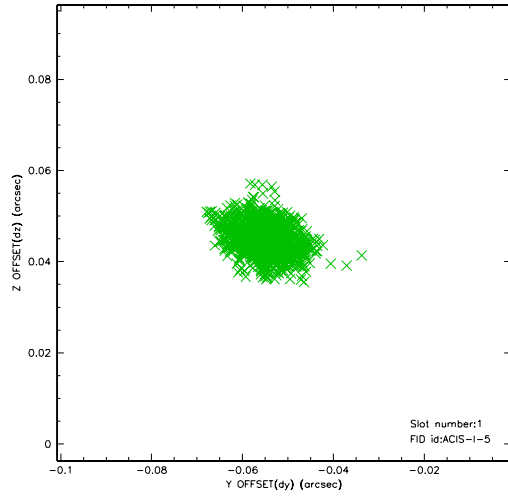


2.5 FID Slots

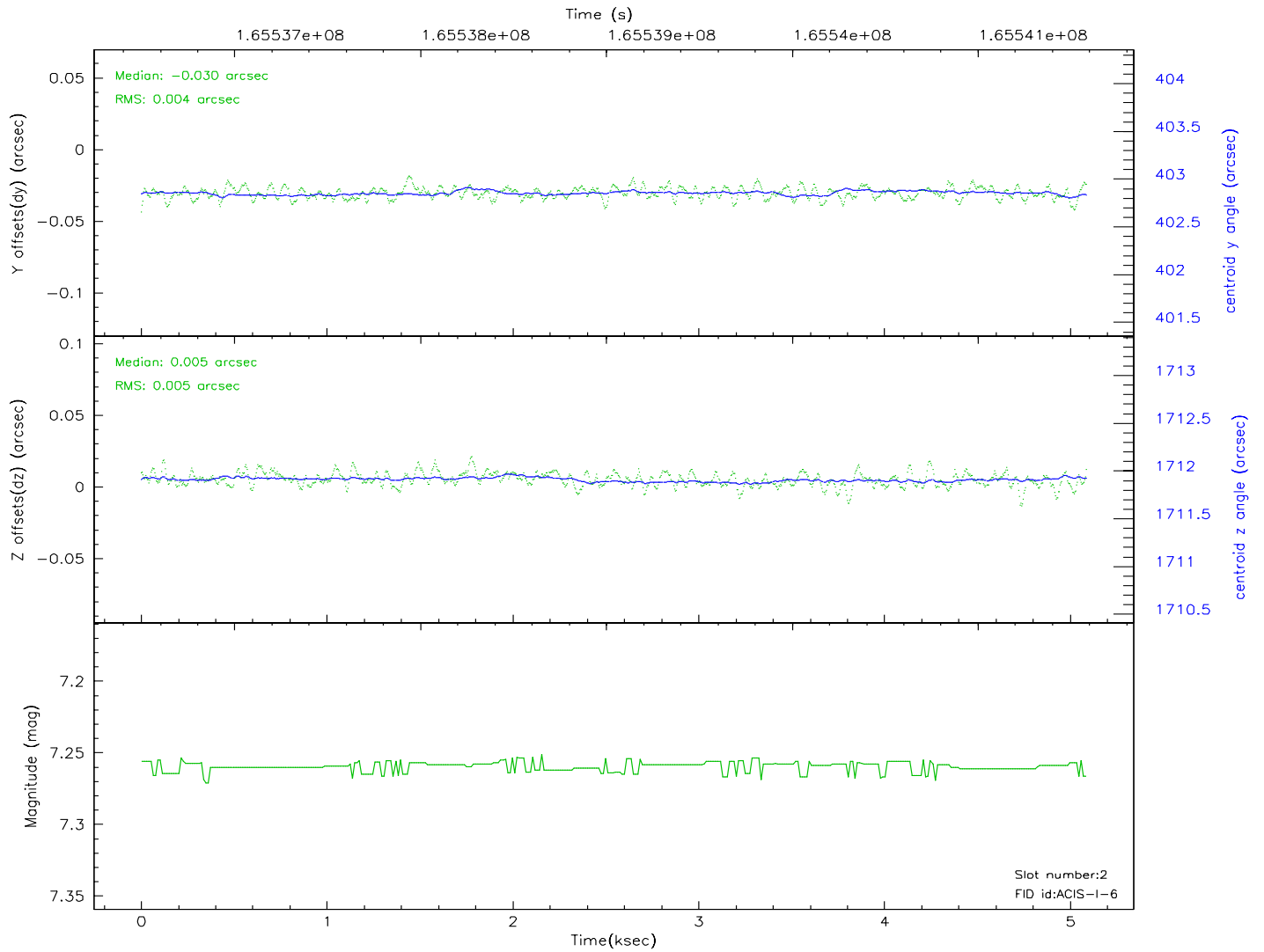
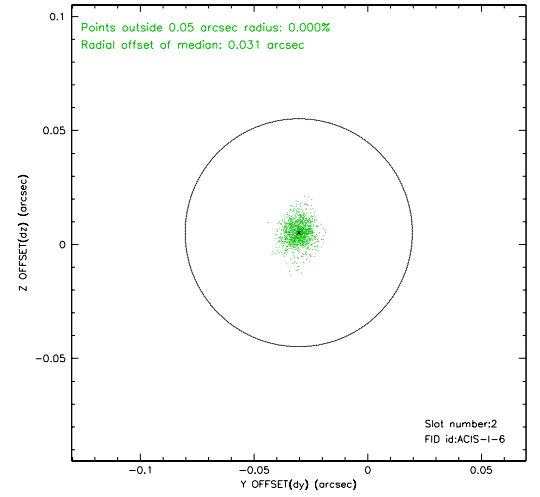
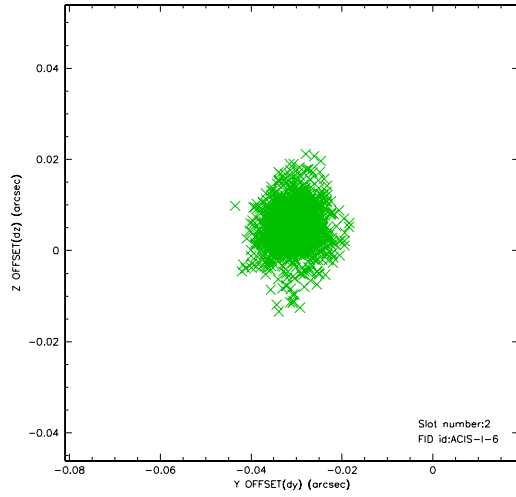
2.5.1 Slot 0



2.5.2 Slot 1



2.5.3 Slot 2



3 Point Sources

5.50 arcmin



A Summary

A.1 Status

V&V Scientist	Jen Lauer
V&V Date (YYYY-MM-DD)	2006.07.30
V&V Edition	1
V&V Disposition and Status	OK
V&V Charge Time	4.674

A.2 Comments