

# V&V Reference Report

## L2 ASCDS Version : 8.4.5

Observation 3603 - L2 Version 3  
Chandra X-Ray Center

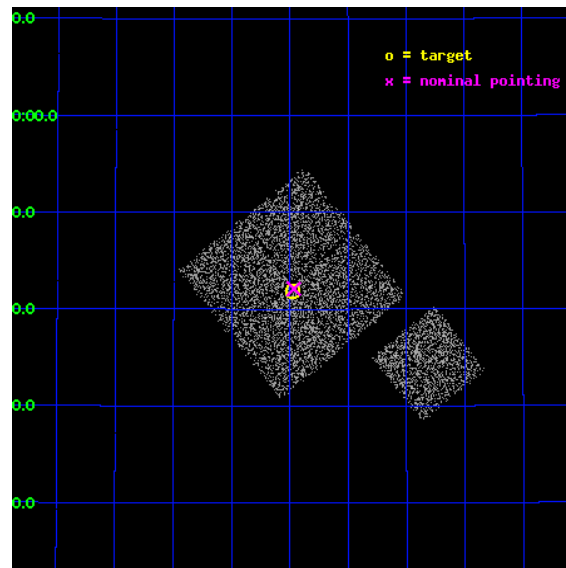
L2 Processing Date : Oct 24 2012

## Contents

<b>1</b>	<b>Front</b>	<b>2</b>
<b>2</b>	<b>OBI</b>	<b>3</b>
2.1	OBI . . . . .	3
2.1.1	Images . . . . .	3
2.1.2	Bias . . . . .	3
2.1.3	Parameters . . . . .	4
2.1.4	Events . . . . .	4
2.2	Compared Parameters . . . . .	5
2.3	Aspect . . . . .	6
2.4	Star Slots . . . . .	9
2.4.1	Slot 3 . . . . .	9
2.4.2	Slot 4 . . . . .	10
2.4.3	Slot 5 . . . . .	11
2.4.4	Slot 6 . . . . .	12
2.4.5	Slot 7 . . . . .	13
2.5	FID Slots . . . . .	14
2.5.1	Slot 0 . . . . .	14
2.5.2	Slot 1 . . . . .	15
2.5.3	Slot 2 . . . . .	16
<b>A</b>	<b>Summary</b>	<b>17</b>
A.1	Status . . . . .	17
A.2	Comments . . . . .	17

# 1 Front

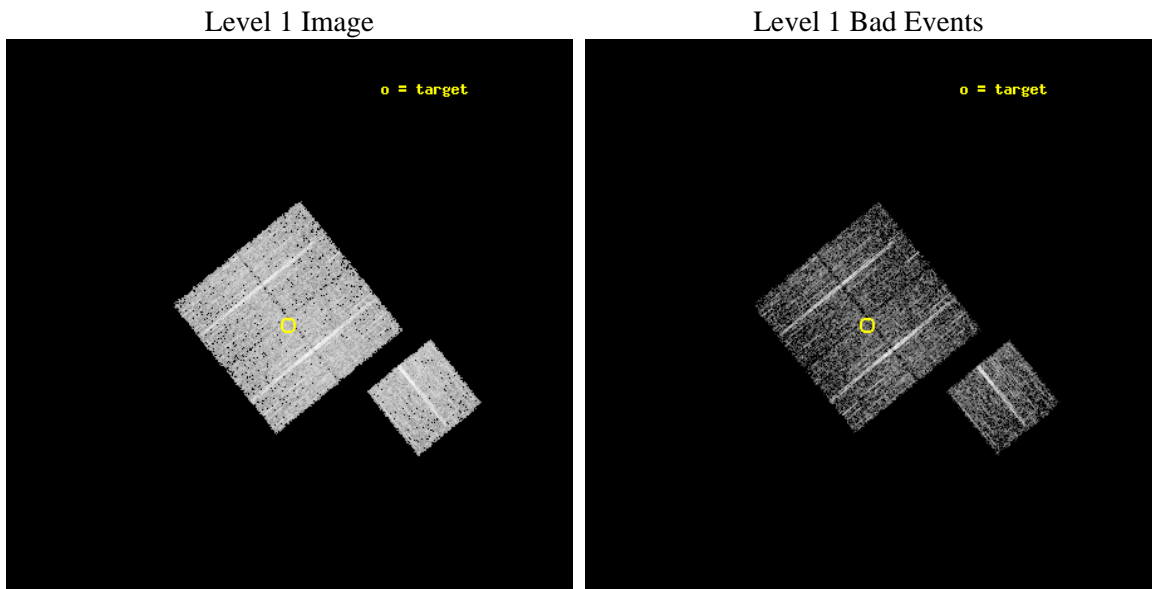
seq_num	900203	Sequence number
obs_id	3603	Observation id
title	CHANDRA LARGE SCALE SURVEY OF THE NOAO BOOTES DEEP FIELD	Proposal
observer	Dr. Stephen Murray	Principal investigator
object	NOAO FIELD F46	Source name
dtcycle	0	&#160
cycle	P	events from which exps? Prim/Second/Both
ra_targ	216.744263	Observer's specified target RA [deg]
dec_targ	35.697552	Observer's specified target Dec [deg]
ra_nom	216.74161112316	Nominal RA [deg]
dec_nom	35.701684545133	Nominal Dec [deg]
roll_nom	141.0102757871	Nominal Roll [deg]
revision	3	Processing version of data
ontime	4776.9157461226	Sum of GTIs [s]
livetime	4714.5018251853	Livetime [s]
ontime0	4776.7926261127	Sum of GTIs [s]
ontime1	4776.833666116	Sum of GTIs [s]
ontime2	4776.8747061193	Sum of GTIs [s]
ontime3	4776.9157461226	Sum of GTIs [s]
ontime6	4776.7515662014	Sum of GTIs [s]
l2events	9536	Number of level 2 events



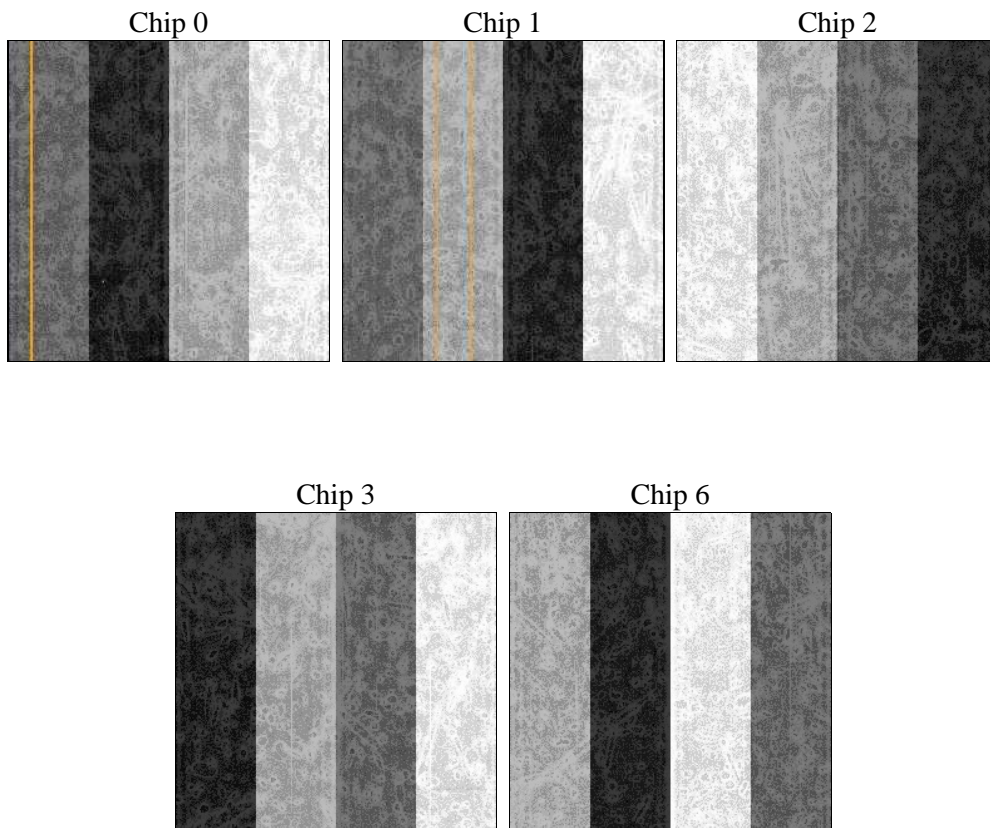
## 2 OBI

### 2.1 OBI

#### 2.1.1 Images



#### 2.1.2 Bias



### 2.1.3 Parameters

obi_num	0	Obi number	sched_exp_time	5000.000000	[s] Scheduled observation exposure time
ascdsver	8.4.5	Processing system revision	ontime	4776.9157461226	Sum of GTIs [s]
caldsver	4.5.2	&#160	ontime0	4776.7926261127	Sum of GTIs [s]
date	2012-10-24T20:51:56	Date and time of file creation	ontime1	4776.833666116	Sum of GTIs [s]
revision	3	Processing version of data	ontime2	4776.8747061193	Sum of GTIs [s]
			ontime3	4776.9157461226	Sum of GTIs [s]
			ontime6	4776.7515662014	Sum of GTIs [s]
			l1events	116840	Number of level 1 events

### 2.1.4 Events

	ccd 0	ccd 1	ccd 2	ccd 3	ccd 6
level 1 events	21465	22006	24328	24365	24676
rejected events	19138	19556	22056	22100	22286
rejected %	89%	88%	90%	90%	90%

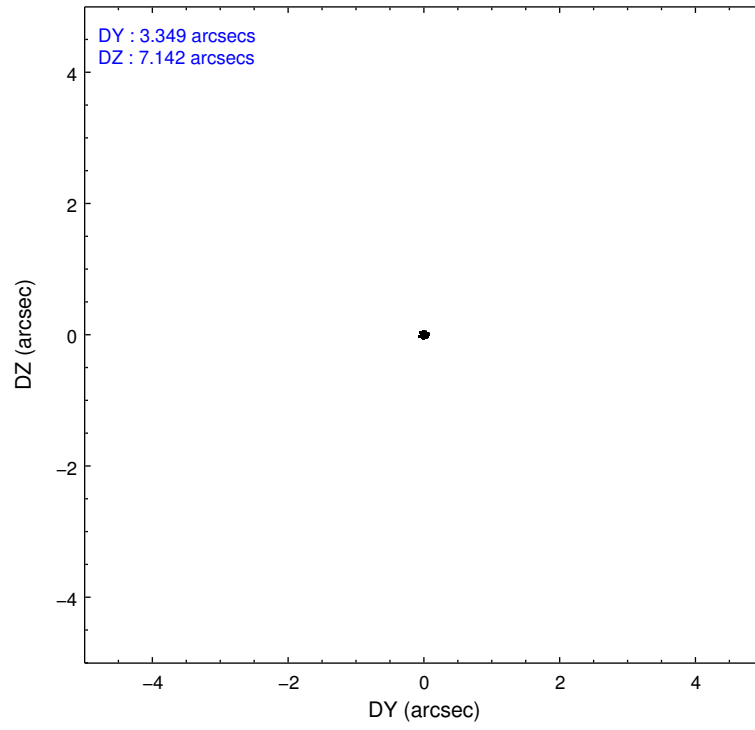
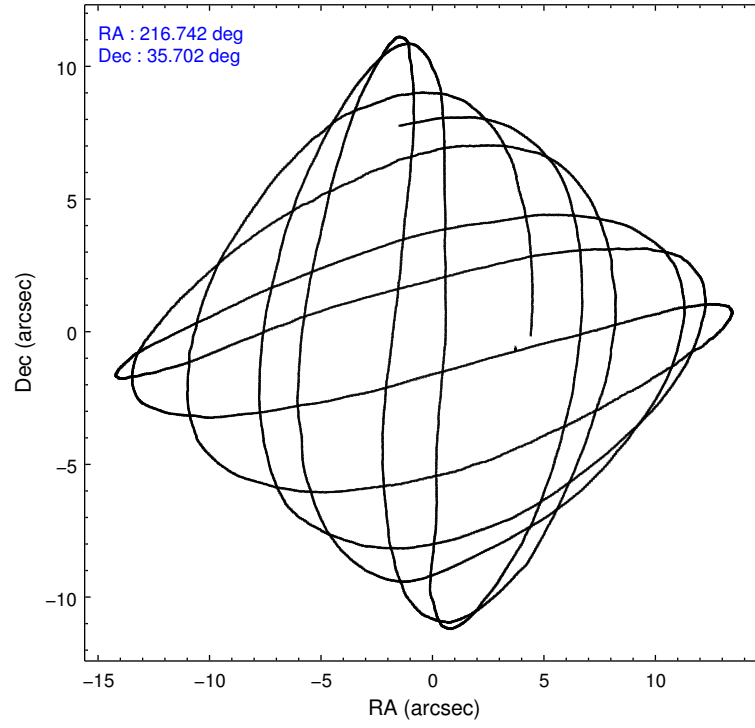
	ccd 0	ccd 1	ccd 2	ccd 3	ccd 6
grade 0 events	884	839	849	818	857
	4%	3%	3%	3%	3%
grade 1 events	15	8	7	18	17
	0%	0%	0%	0%	0%
grade 2 events	513	523	533	475	478
	2%	2%	2%	1%	1%
grade 3 events	286	278	258	280	288
	1%	1%	1%	1%	1%
grade 4 events	239	328	254	273	277
	1%	1%	1%	1%	1%
grade 5 events	720	744	627	782	743
	3%	3%	2%	3%	3%
grade 6 events	405	483	380	420	491
	1%	2%	1%	1%	1%
grade 7 events	18403	18803	21420	21299	21525
	85%	85%	88%	87%	87%

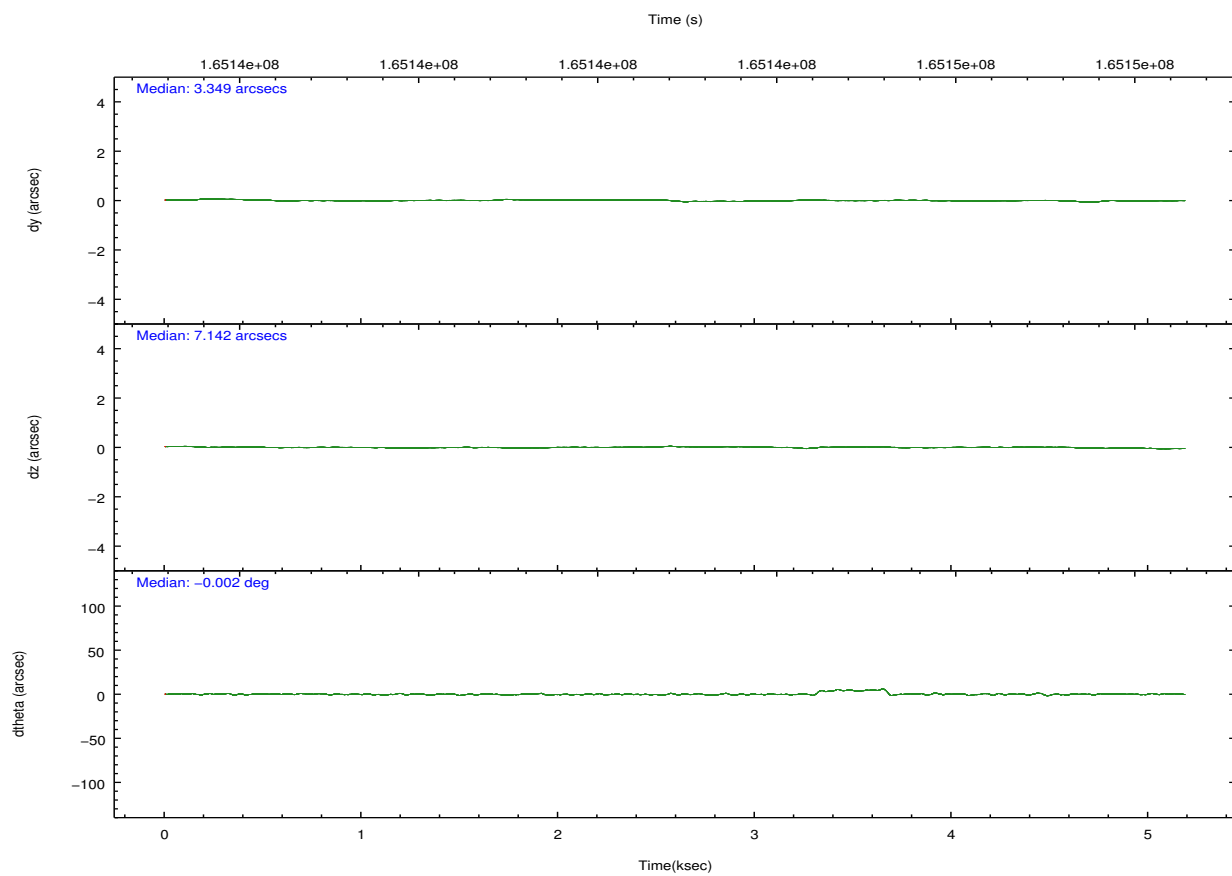
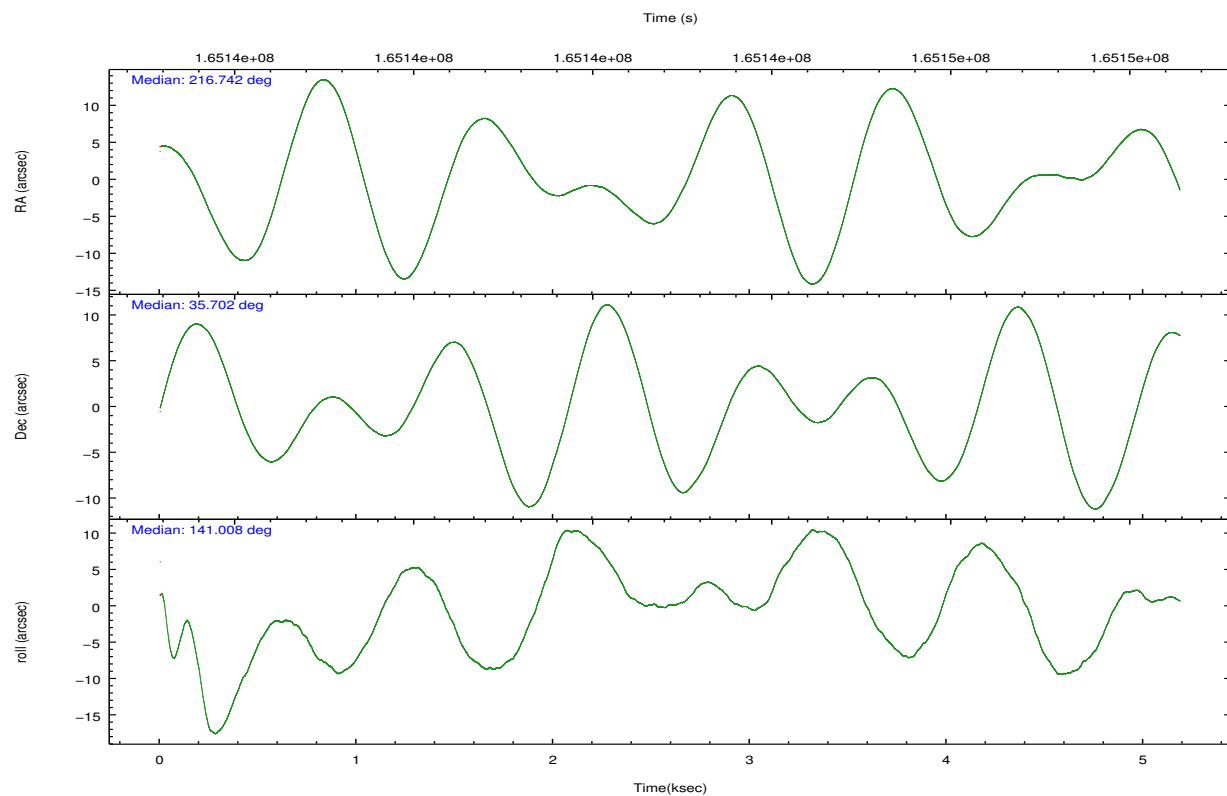


## 2.2 Compared Parameters

Parameter	Planned	Actual	Parameter	Planned	Actual
Instrument	ACIS	ACIS	Obspar format version number	7	7
Detector	ACIS-01236	ACIS-01236	Obspar file type	PREDICTED	ACTUAL
Grating	NONE	NONE	Obspar update status	NONE	UPDATED
Data mode	VFAINT	VFAINT	Number of optional ACIS chips dropped	0	0
Observation mode	POINTING	POINTING	On-chip summing requested	N	N
[deg] Pointing RA	216.774898	216.7416111231616	Subarray requested	NONE	NONE
[deg] Pointing Dec	35.697475	35.70168454513264	Alternating exposures requested	N	N
[deg] Pointing Roll	140.782119	141.010275787102	[s] Primary exposure time	0.000000	3.1
[mm] SIM focus pos	-0.782348	-0.7809083437167272			
[mm] SIM defocus	0	0.001439871863259334			
[mm] SIM translation stage pos	-233.592463	-233.5874344608287			
[mm] SIM translation stage offset	0	-0.005018542100998502			
[s] Observation start time (MET)	165142029.184000	165141653.67695			
Observation start date	2003-03-27T08:46:05	2003-03-27T08:40:53			
[s] Observation end time (MET)	165147029.184000	165147163.56468			
Observation end date	2003-03-27T10:09:25	2003-03-27T10:12:43			
Read mode	TIMED	TIMED			

## 2.3 Aspect



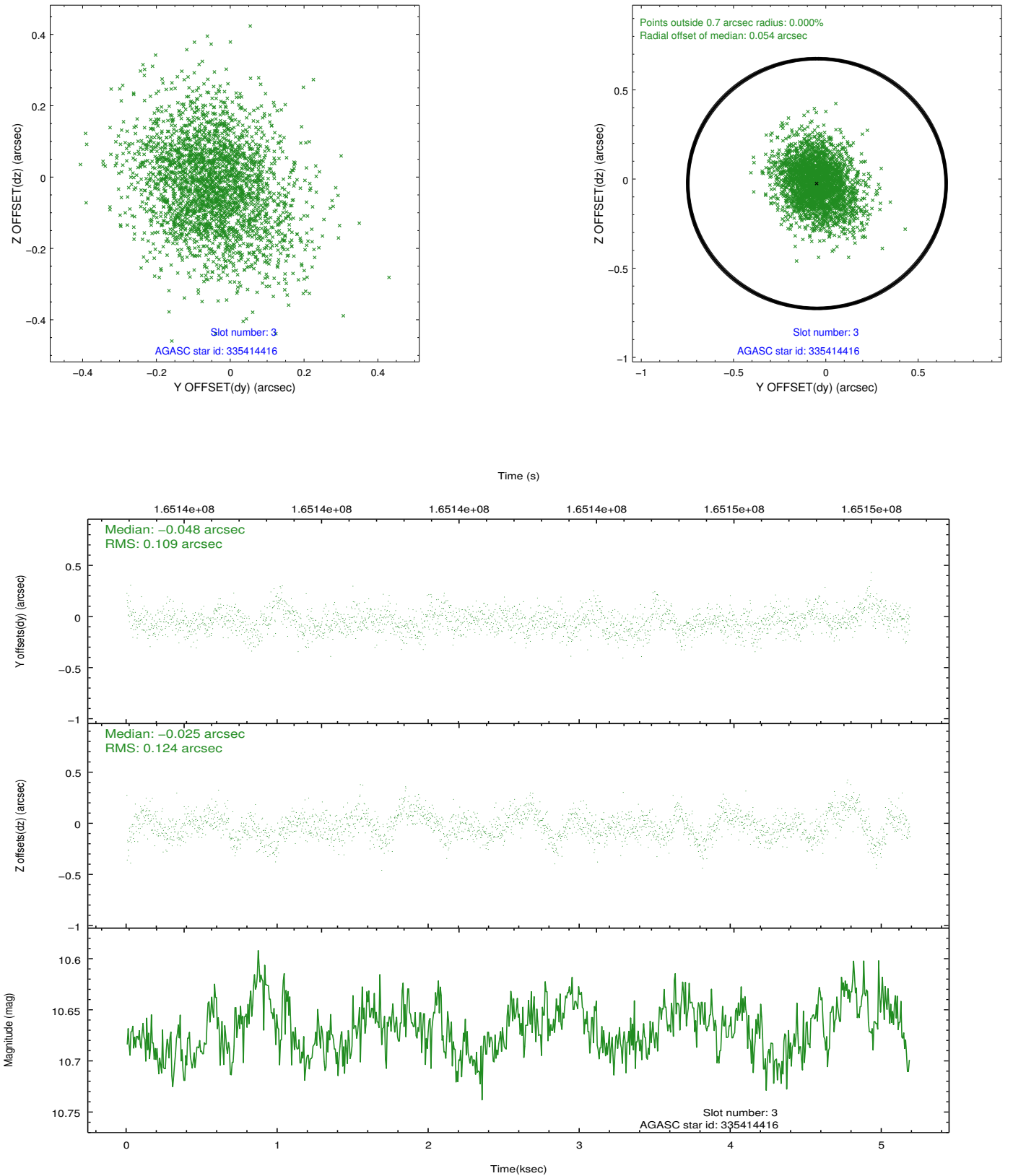


### Slot Statistics

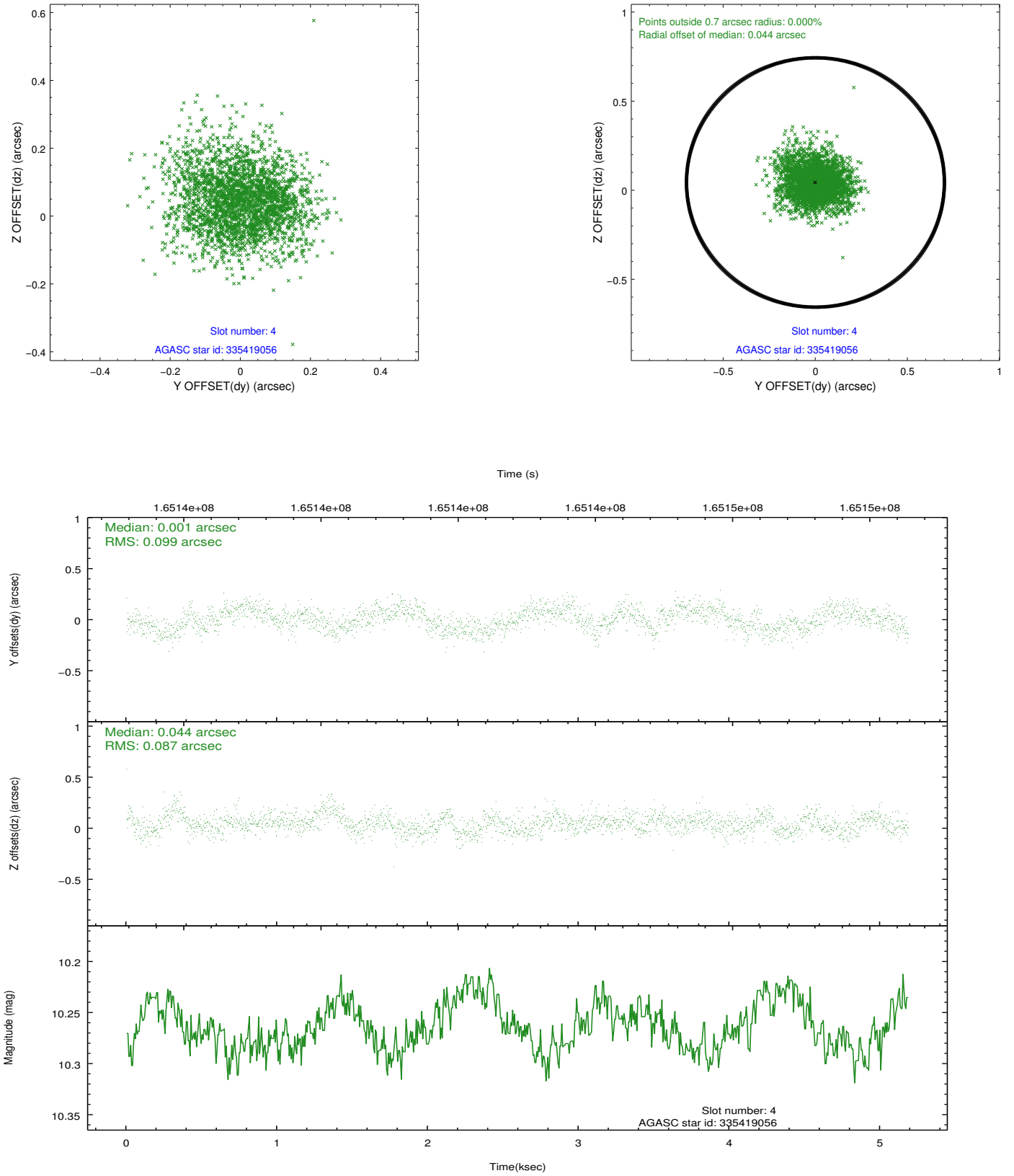
slot	status	id	mag	n_pts	med_dy	med_dz	dr1	dr2	ra	dec	mean_y	mean_z
0	FID	ACIS-I-1	7.25	1265	-0.040	-0.033	0.008	0.050	0.000000	0.000000	936.38	-830.57
1	FID	ACIS-I-4	7.19	1264	0.073	0.065	0.008	0.037	0.000000	0.000000	2157.22	1068.73
2	FID	ACIS-I-5	7.24	1265	-0.131	0.038	0.007	0.019	0.000000	0.000000	-1810.18	1067.93
3	GUIDE	335414416	10.67	2530	-0.048	-0.025	0.173	0.291	216.248524	35.950873	1767.89	260.87
4	GUIDE	335419056	10.27	2530	0.001	0.044	0.139	0.227	217.429800	35.467704	-2005.60	-577.05
5	GUIDE	335419120	9.62	2528	0.052	-0.025	0.115	0.181	216.521861	35.833546	882.01	87.03
6	GUIDE	335422272	9.48	2529	0.089	-0.042	0.108	0.179	217.586135	35.522660	-2232.41	-1022.60
7	GUIDE	335414448	7.37	1265	-0.181	0.104	0.084	0.128	216.992261	35.577204	-768.39	-67.60

## 2.4 Star Slots

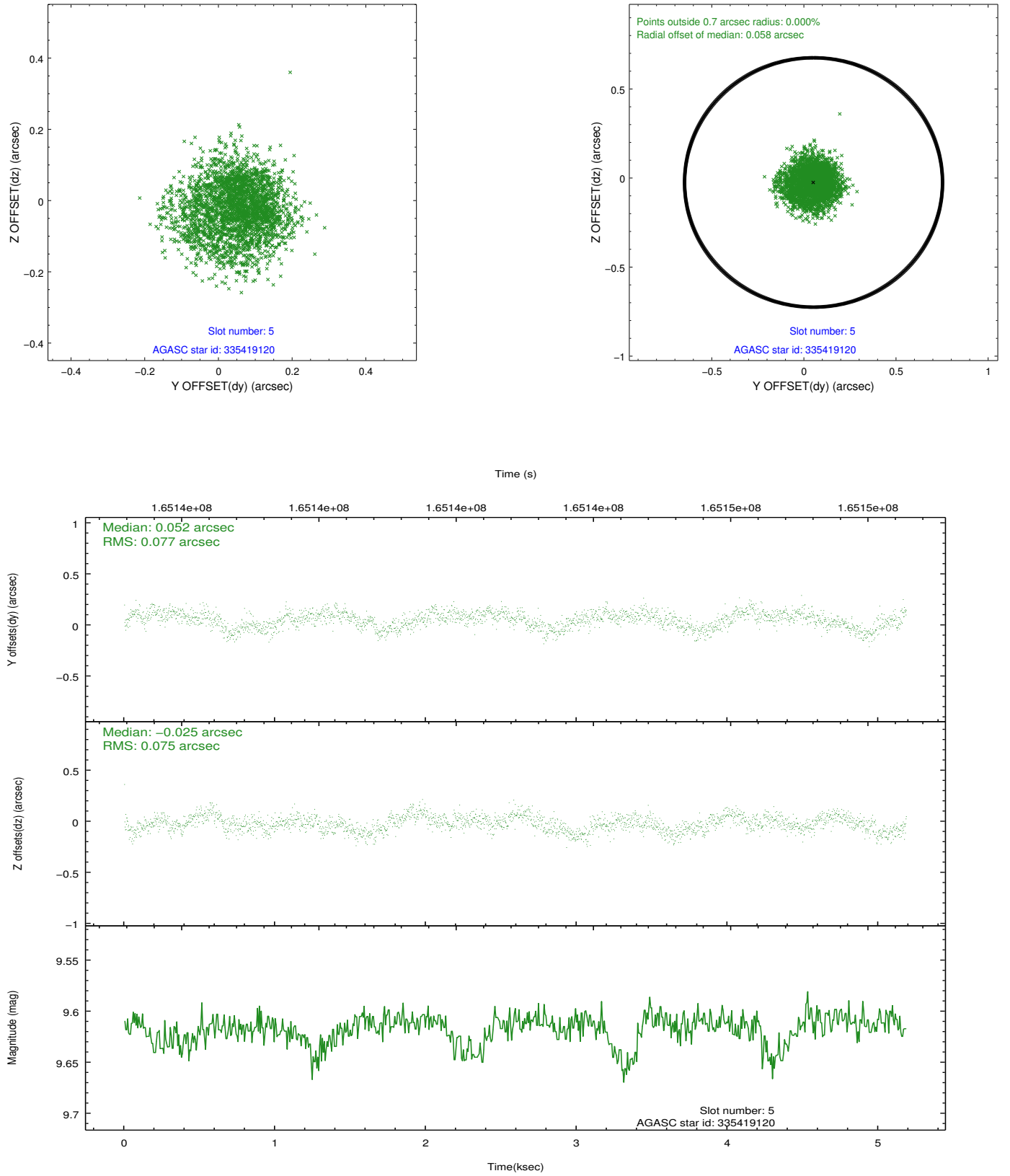
### 2.4.1 Slot 3



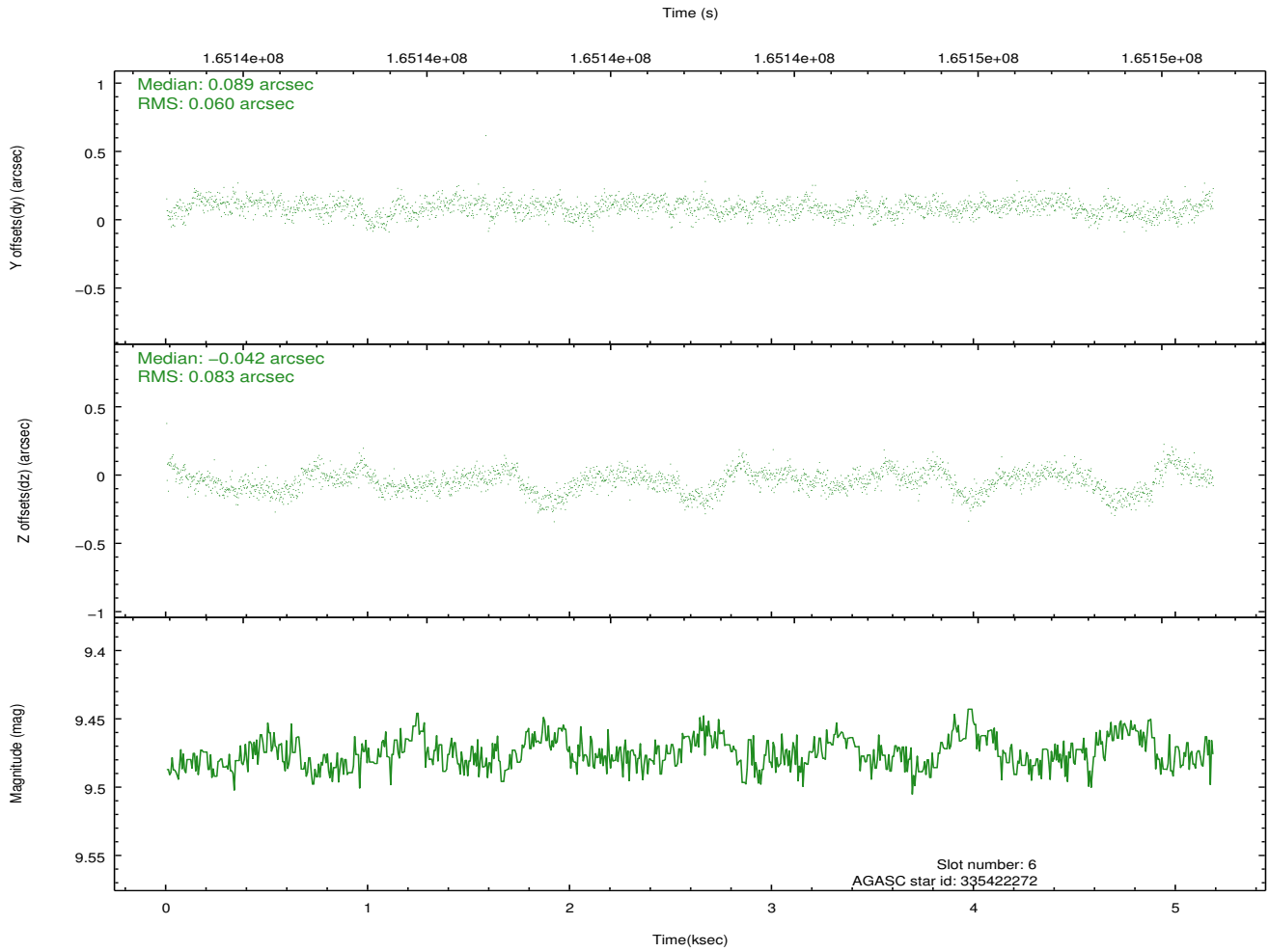
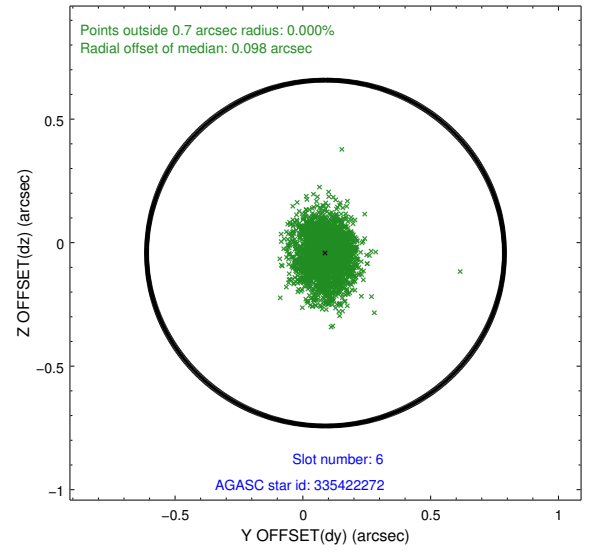
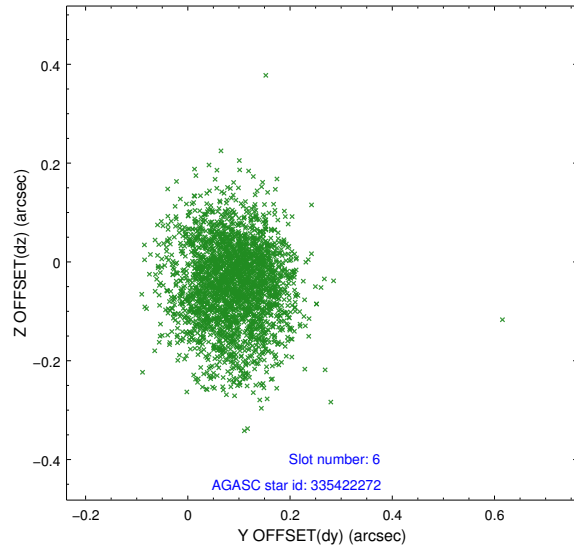
## 2.4.2 Slot 4



### 2.4.3 Slot 5

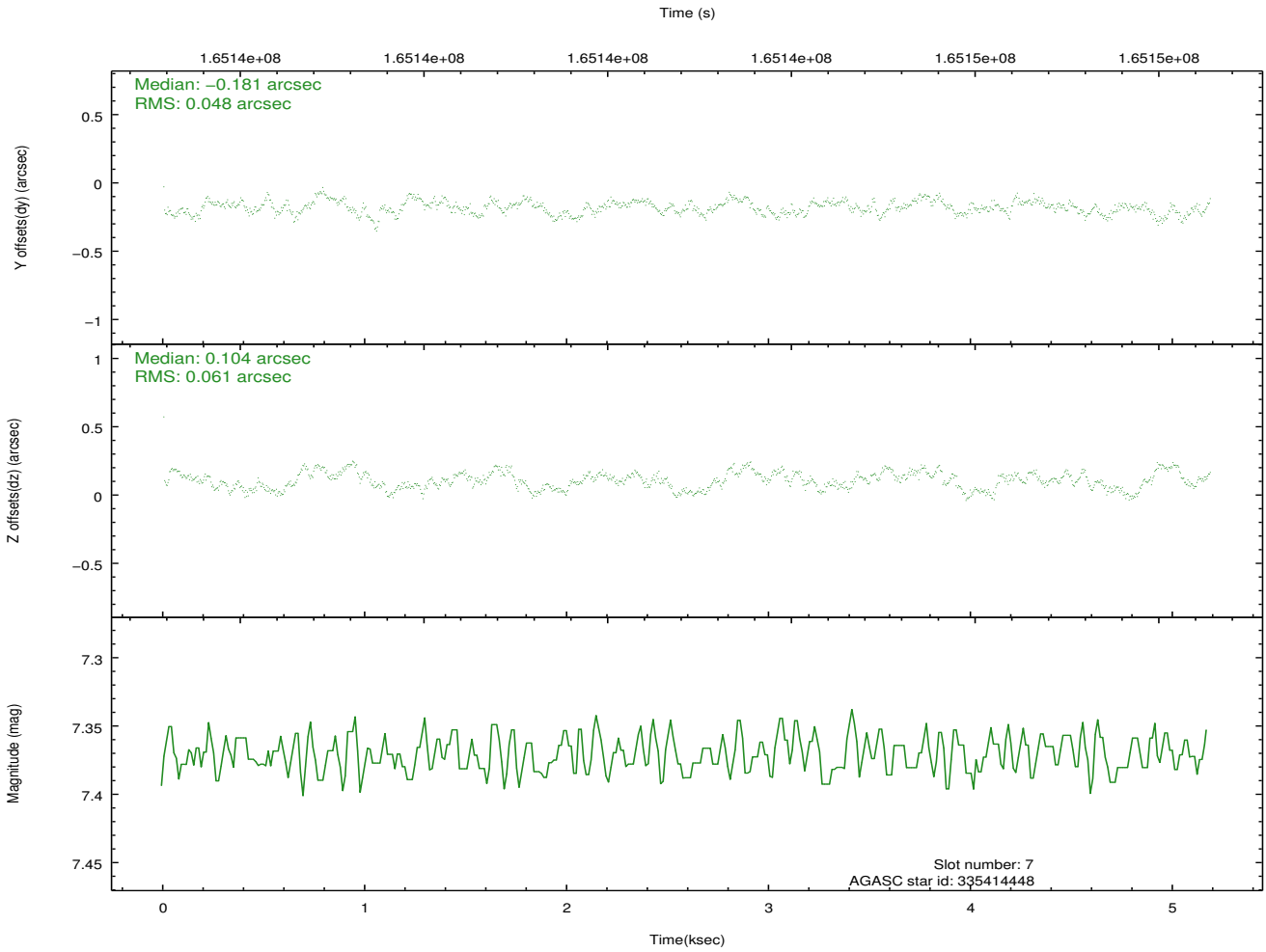
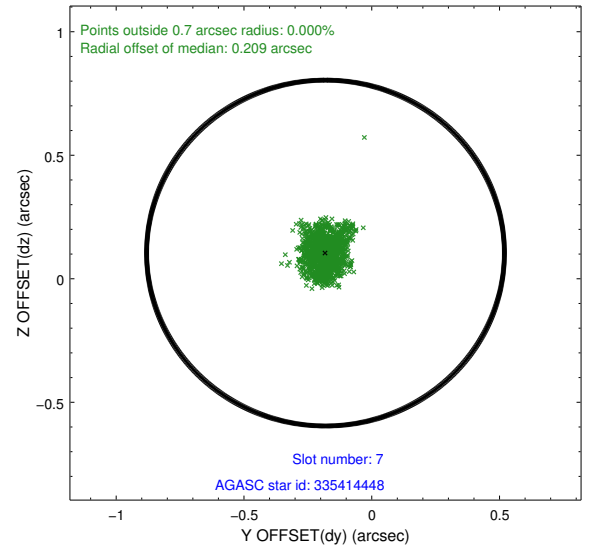
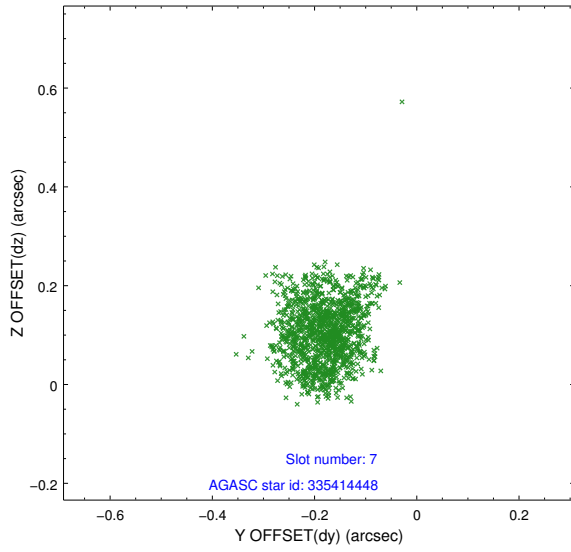


## 2.4.4 Slot 6



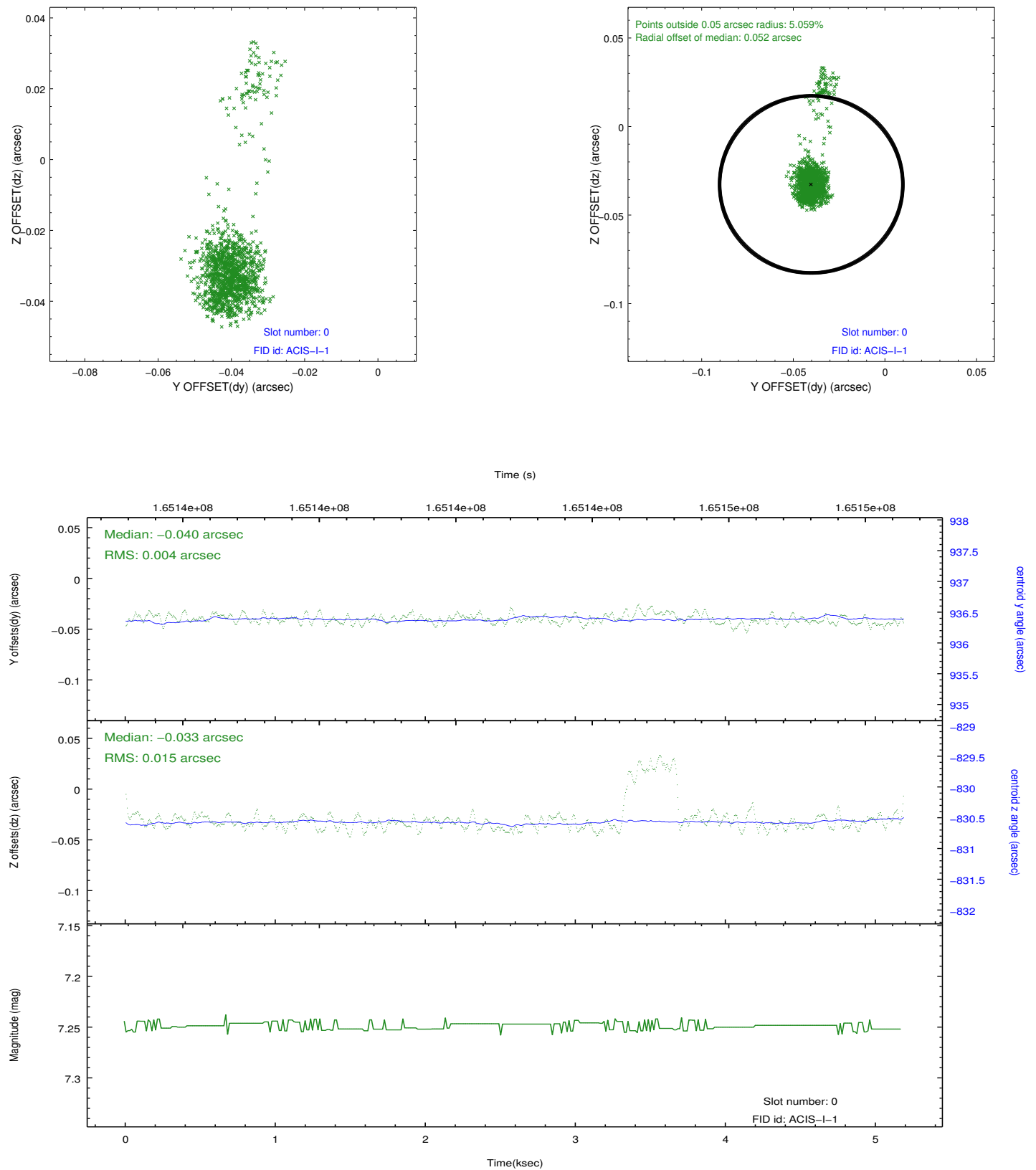


## 2.4.5 Slot 7

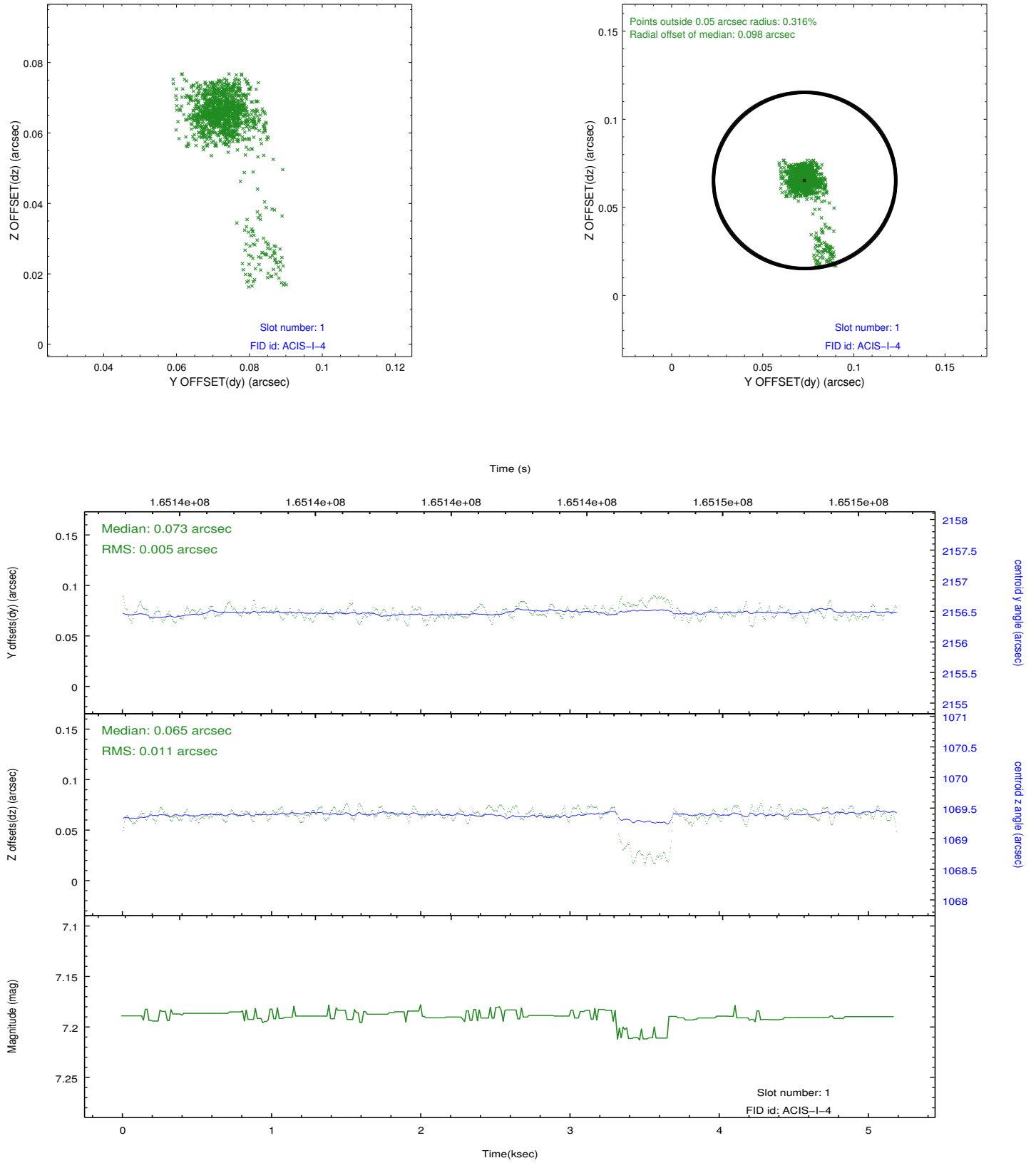


## 2.5 FID Slots

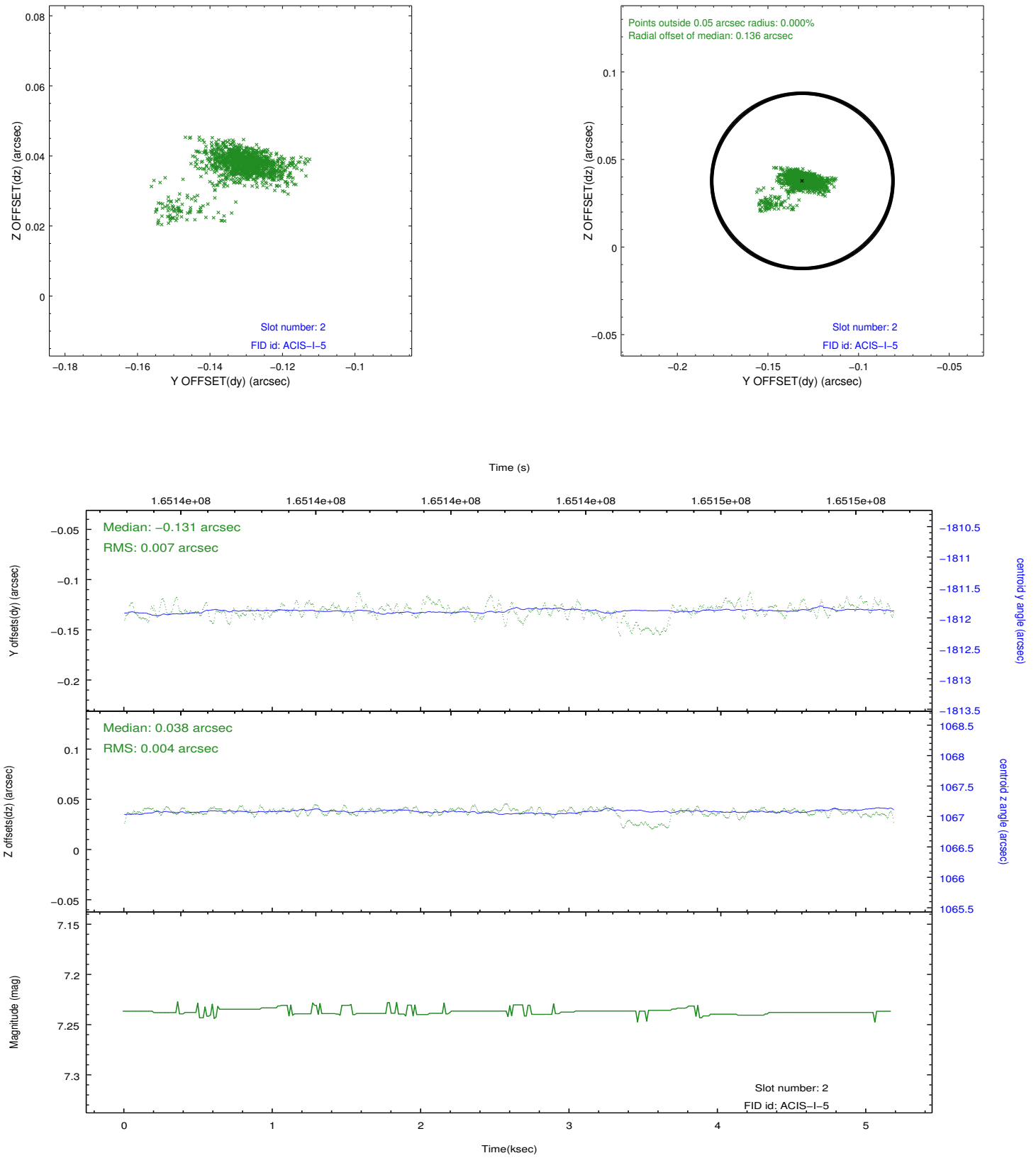
### 2.5.1 Slot 0



## 2.5.2 Slot 1



### 2.5.3 Slot 2



## A Summary

### A.1 Status

V&V Scientist	Jen Lauer
V&V Date (YYYY-MM-DD)	2012.11.08
V&V Edition	1
V&V Disposition and Status	OK
V&V Charge Time	4.777

### A.2 Comments