

V&V Reference Report

L2 ASCDS Version : 7.6.8

Observation 3603 - L2 Version 001
Chandra X-Ray Center

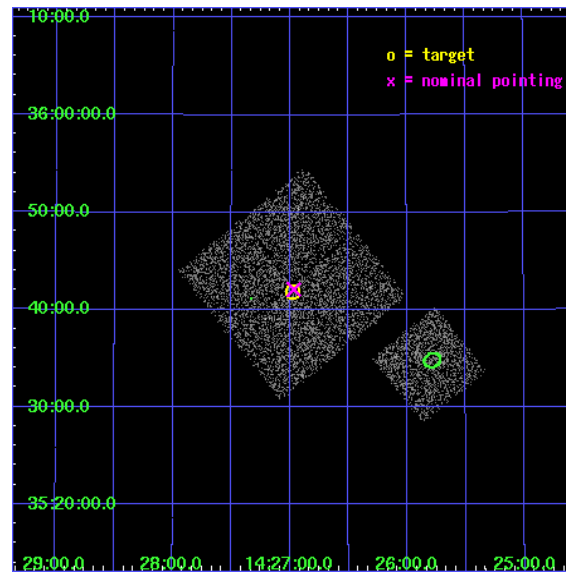
L2 Processing Date : Jul 29 2006

Contents

1	Front	2
2	OBI	3
2.1	OBI	3
2.1.1	Images	3
2.1.2	Bias	3
2.1.3	Parameters	4
2.1.4	Events	4
2.2	Compared Parameters	5
2.3	Aspect	6
2.4	Star Slots	9
2.4.1	Slot 3	9
2.4.2	Slot 4	10
2.4.3	Slot 5	11
2.4.4	Slot 6	12
2.4.5	Slot 7	13
2.5	FID Slots	14
2.5.1	Slot 0	14
2.5.2	Slot 1	15
2.5.3	Slot 2	16
3	Point Sources	17
A	Summary	18
A.1	Status	18
A.2	Comments	18

1 Front

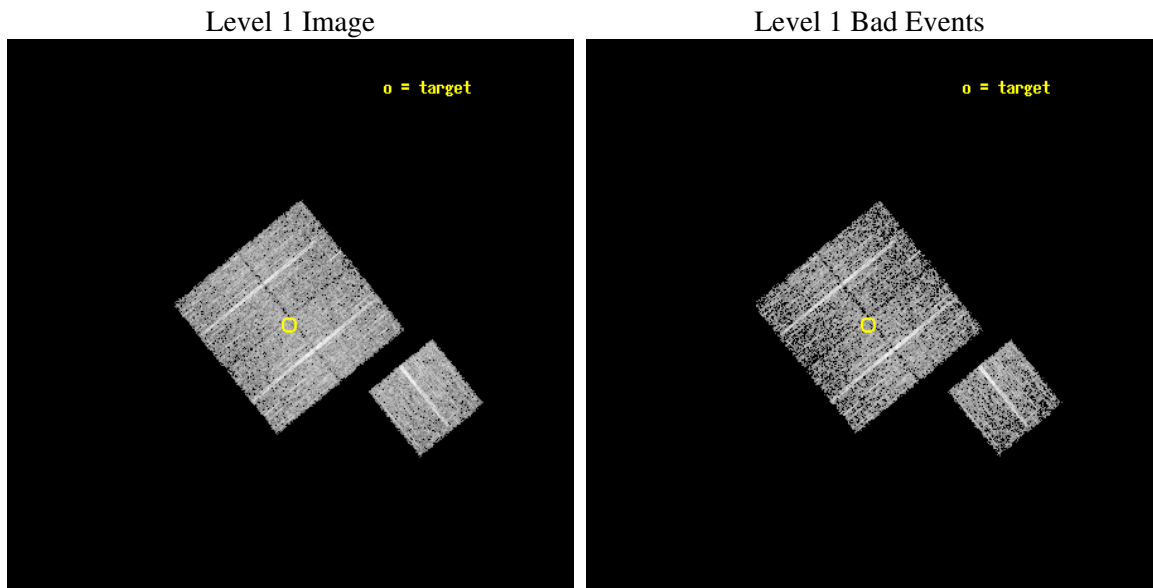
seq_num	900203
obs_id	3603
title	CHANDRA LARGE SCALE SURVEY OF THE NOAO BOOTES DEEP FIELD
observer	Dr. Stephen Murray
object	NOAO FIELD F46
dtcycle	0
cycle	P
ra_targ	216.744263
dec_targ	35.697552
ra_nom	216.74161112316
dec_nom	35.701684545133
roll_nom	141.0102757871
revision	2
ontime	4777.0999908149
livetime	4714.6836625851
ontime0	4777.0999908149
ontime1	4777.0999908149
ontime2	4777.0999908149
ontime3	4777.0999908149
ontime6	4777.0999908149
l2events	9546



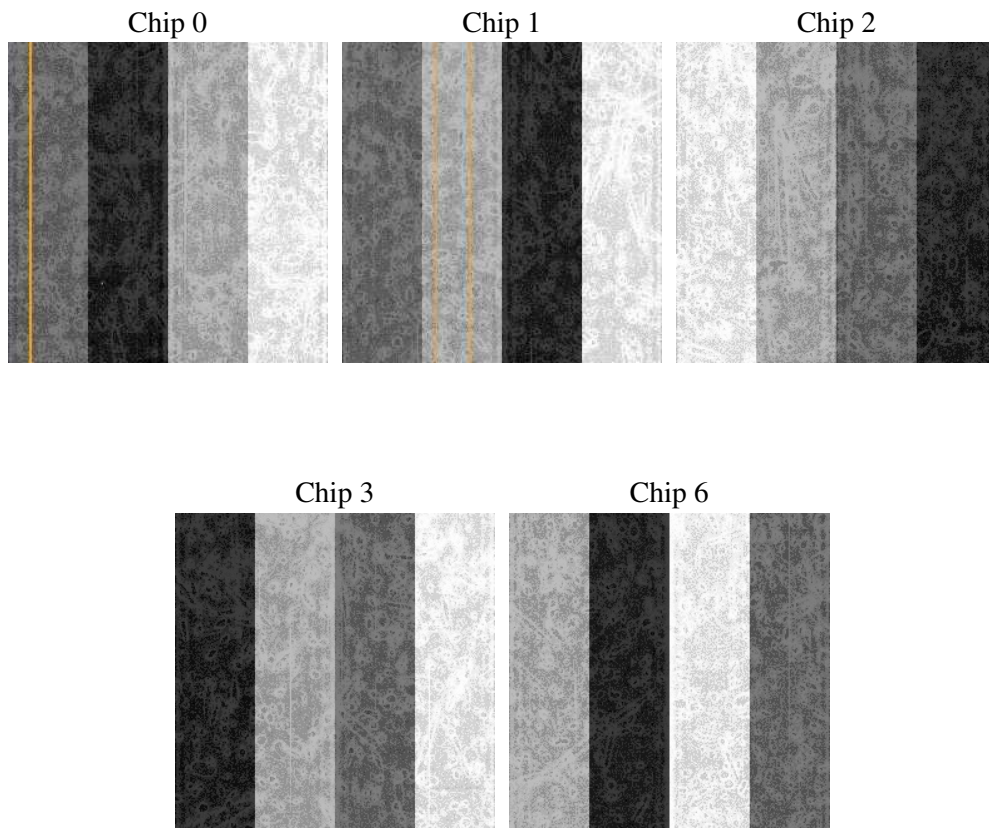
2 OBI

2.1 OBI

2.1.1 Images



2.1.2 Bias



2.1.3 Parameters

obi_num	0
ascdsver	7.6.8
caldbver	3.2.2
date	2006-07-29T16:45:48
revision	2

sched_exp_time	5000.000000
ontime	4780.6213813424
ontime0	4780.6213813424
ontime1	4780.6213813424
ontime2	4780.6213614643
ontime3	4780.6213813424
ontime6	4780.6213614345
llevents	116840

2.1.4 Events

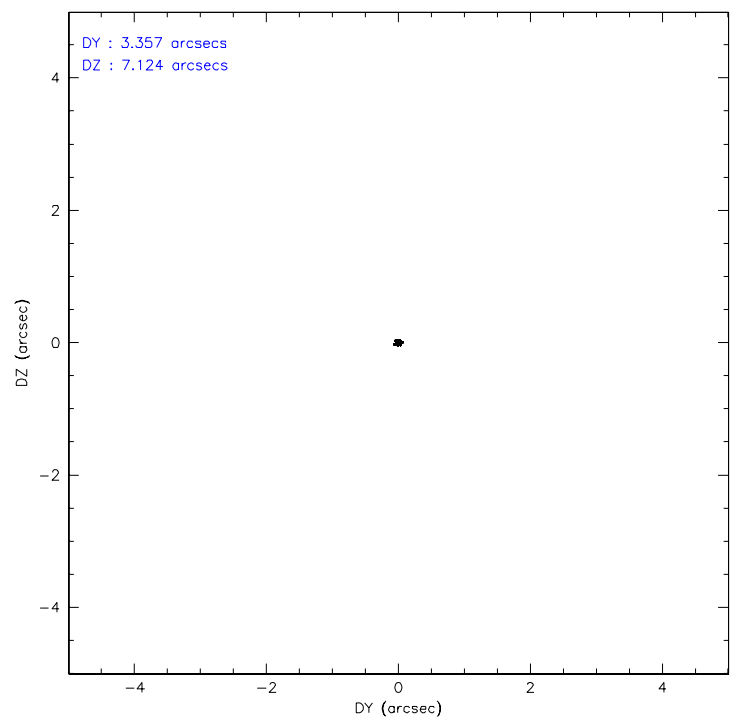
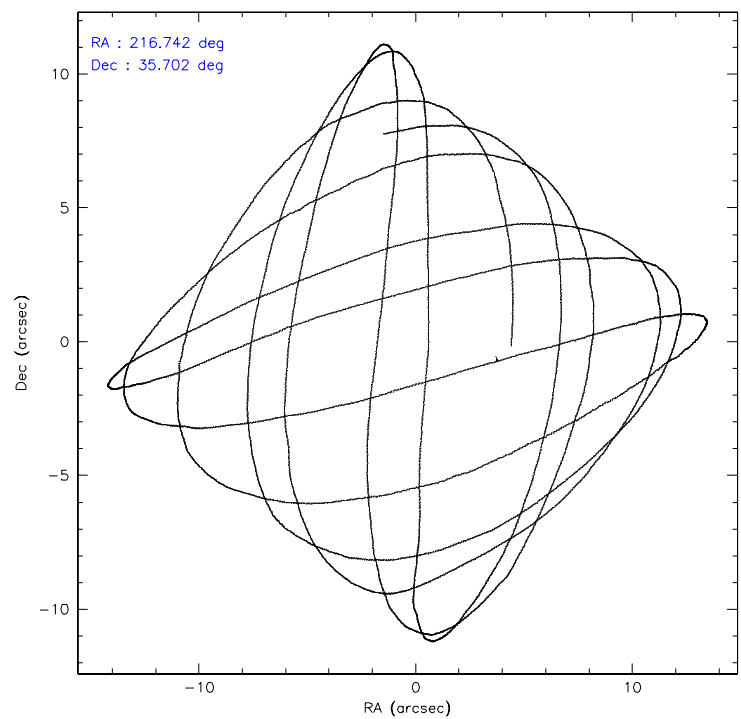
	ccd 0	ccd 1	ccd 2	ccd 3	ccd 6
level 1 events	21465	22006	24328	24365	24676
rejected events	19138	19555	22056	22100	22284
rejected %	89%	88%	90%	90%	90%

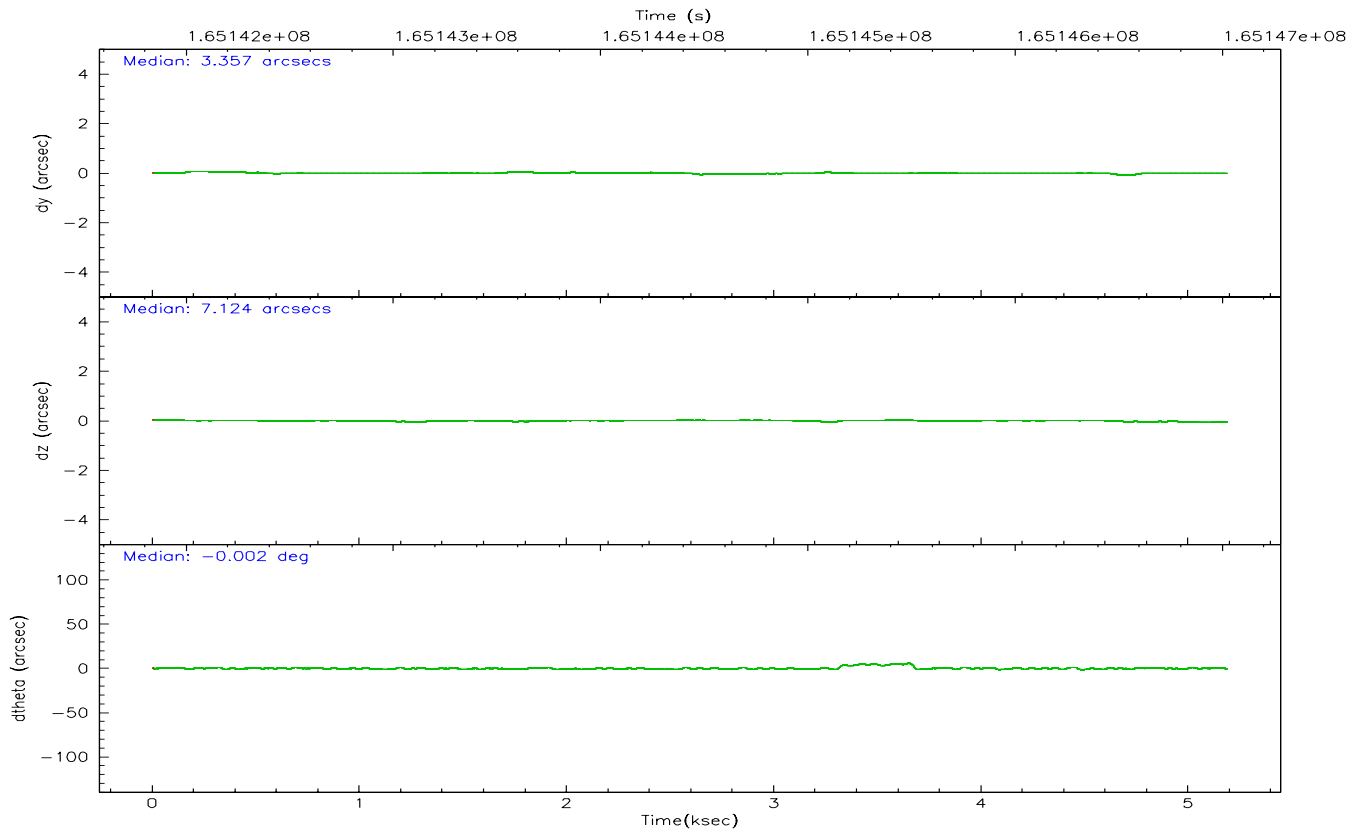
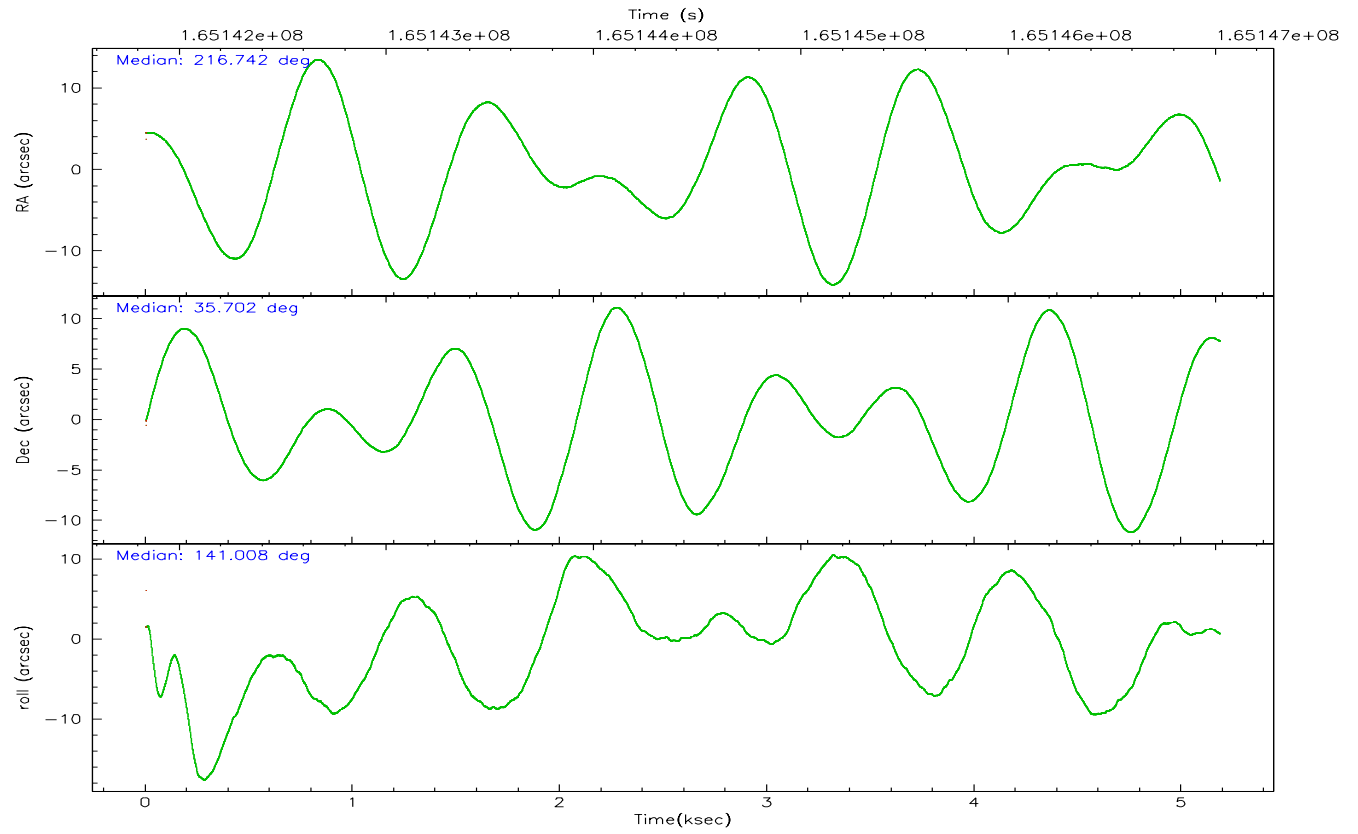
	ccd 0	ccd 1	ccd 2	ccd 3	ccd 6
grade 0 events	884	839	848	818	857
	4%	3%	3%	3%	3%
grade 1 events	15	8	7	18	17
	0%	0%	0%	0%	0%
grade 2 events	513	523	534	475	478
	2%	2%	2%	1%	1%
grade 3 events	286	278	258	280	288
	1%	1%	1%	1%	1%
grade 4 events	239	328	254	273	277
	1%	1%	1%	1%	1%
grade 5 events	720	743	625	782	740
	3%	3%	2%	3%	2%
grade 6 events	405	484	380	420	493
	1%	2%	1%	1%	1%
grade 7 events	18403	18803	21422	21299	21526
	85%	85%	88%	87%	87%

2.2 Compared Parameters

Parameter	Planned	Actual	Parameter	Planned	Actual
Instrument	ACIS	ACIS	Obspar format version number	6	6
Detector	ACIS-01236	ACIS-01236	Obspar file type	PREDICTED	ACTUAL
Grating	NONE	NONE	Obspar update status	NONE	UPDATED
Data mode	VFAINT	VFAINT	On-chip summing requested	N	N
Observation mode	POINTING	POINTING	Subarray requested	NONE	NONE
Pointing RA	216.774898	216.7416111231616	Alternating exposures requested	N	N
Pointing Dec	35.697475	35.70168454513267	Primary exposure time	0.000000	3.1
Pointing Roll	140.782119	141.010275787102			
SIM focus pos (mm)	-0.782348	-0.7809083437167272			
SIM defocus (mm)	0	0.001439871863259334			
SIM translation stage pos (mm)	-233.592463	-233.5874344608287			
SIM translation stage offset (mm)	0	-0.005018542100998502			
Observation start time	165142029.184000	165141653.67695			
Observation start date	2003-03-27T08:46:05	2003-03-27T08:40:53			
Observation end time	165147029.184000	165147163.56468			
Observation end date	2003-03-27T10:09:25	2003-03-27T10:12:43			
Read mode	TIMED	TIMED			

2.3 Aspect



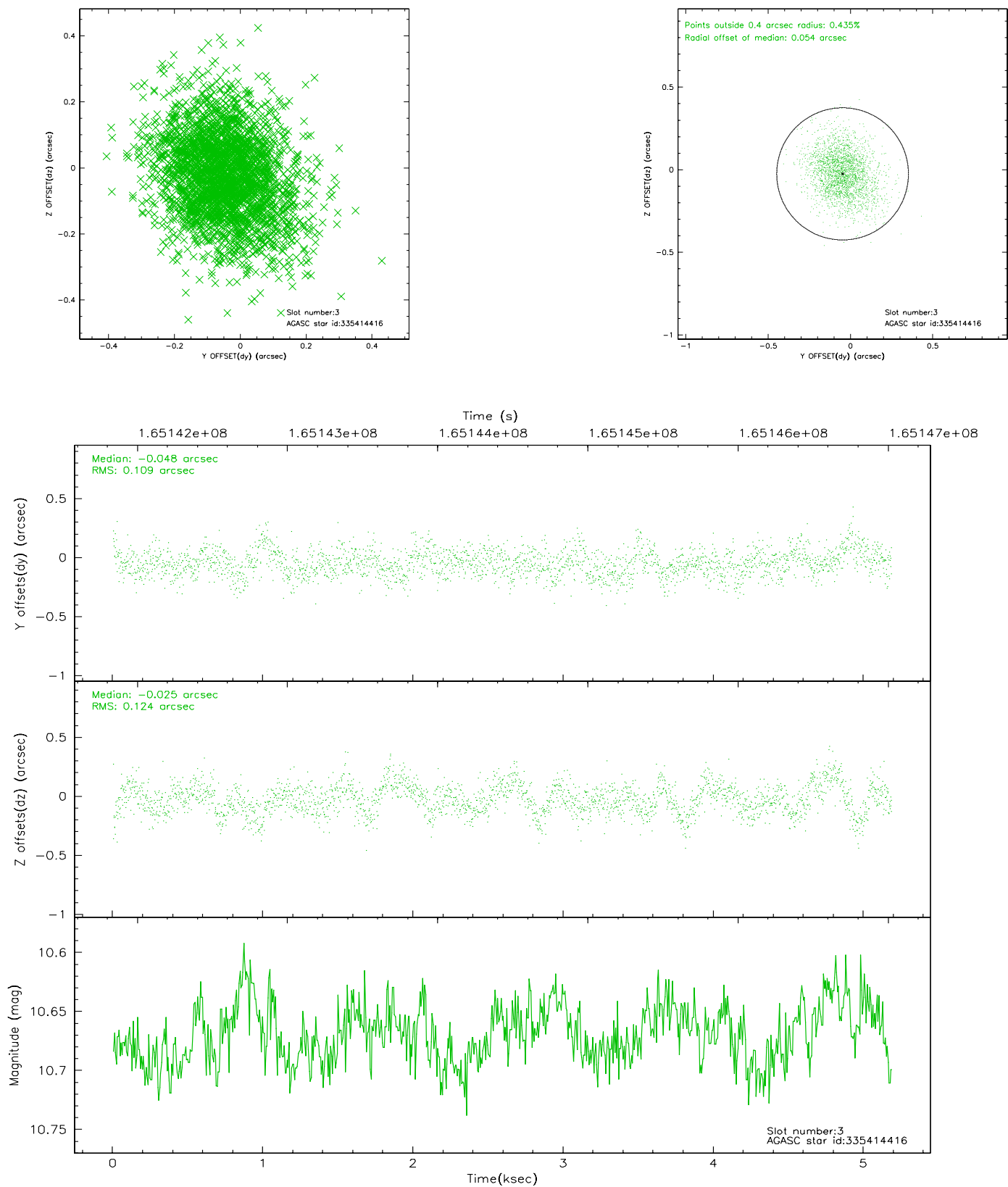


Slot Statistics

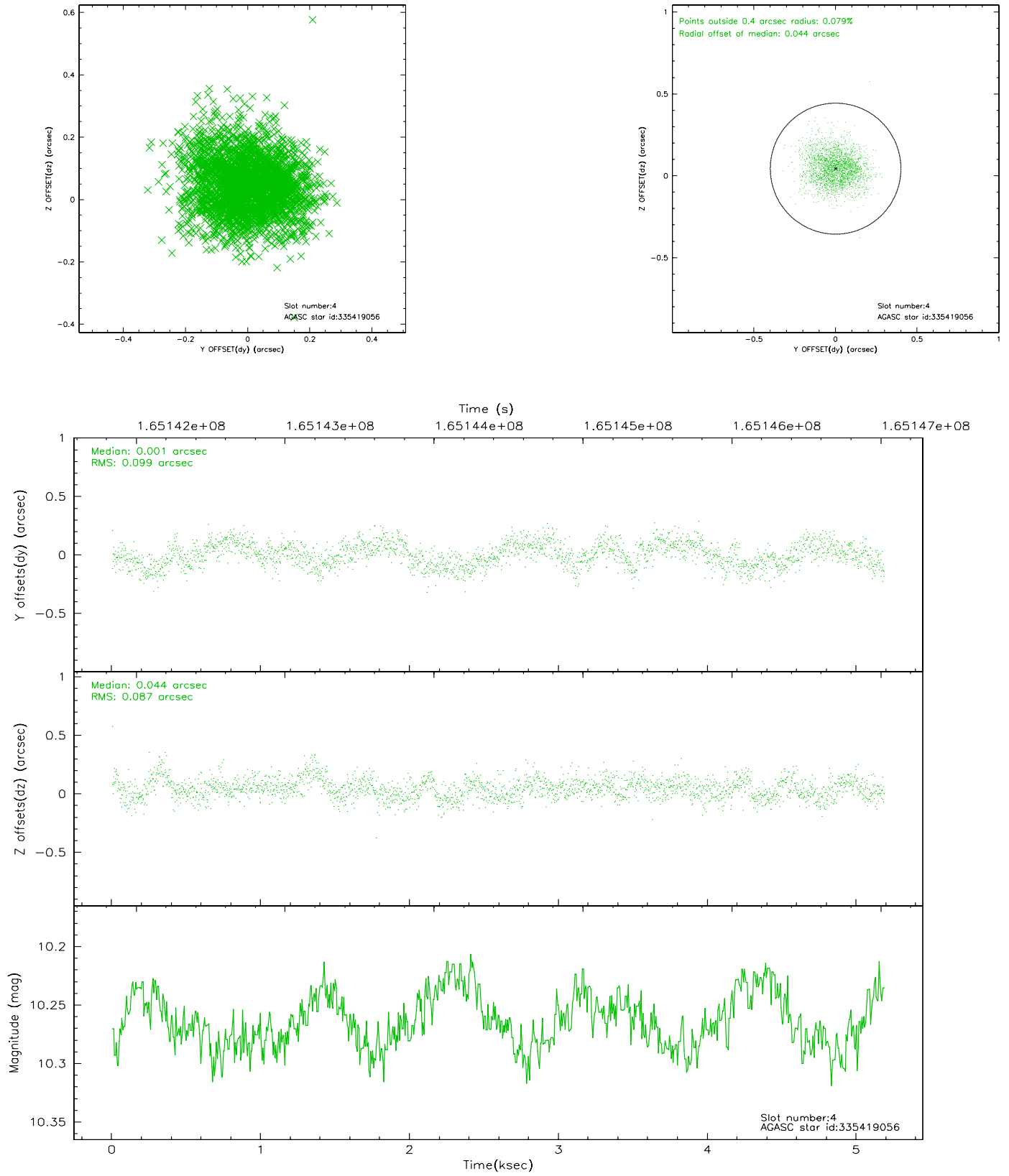
slot	status	id	mag	n_pts	med_dy	med_dz	dr1	dr2	ra	dec	mean_y	mean_z
0	FID	ACIS-I-1	7.25	1265	-0.050	-0.009	0.008	0.043	0.000000	0.000000	936.37	-830.53
1	FID	ACIS-I-4	7.19	1264	0.040	0.053	0.007	0.038	0.000000	0.000000	2157.17	1068.74
2	FID	ACIS-I-5	7.24	1265	-0.089	0.026	0.006	0.026	0.000000	0.000000	-1810.15	1067.93
3	GUIDE	335414416	10.67	2530	-0.048	-0.025	0.173	0.291	216.248524	35.950873	1767.89	260.87
4	GUIDE	335419056	10.27	2530	0.001	0.044	0.139	0.227	217.429800	35.467704	-2005.60	-577.05
5	GUIDE	335419120	9.62	2528	0.052	-0.025	0.115	0.181	216.521861	35.833546	882.01	87.03
6	GUIDE	335422272	9.48	2529	0.089	-0.042	0.108	0.179	217.586135	35.522660	-2232.41	-1022.60
7	GUIDE	335414448	7.37	1265	-0.181	0.104	0.084	0.128	216.992261	35.577204	-768.39	-67.60

2.4 Star Slots

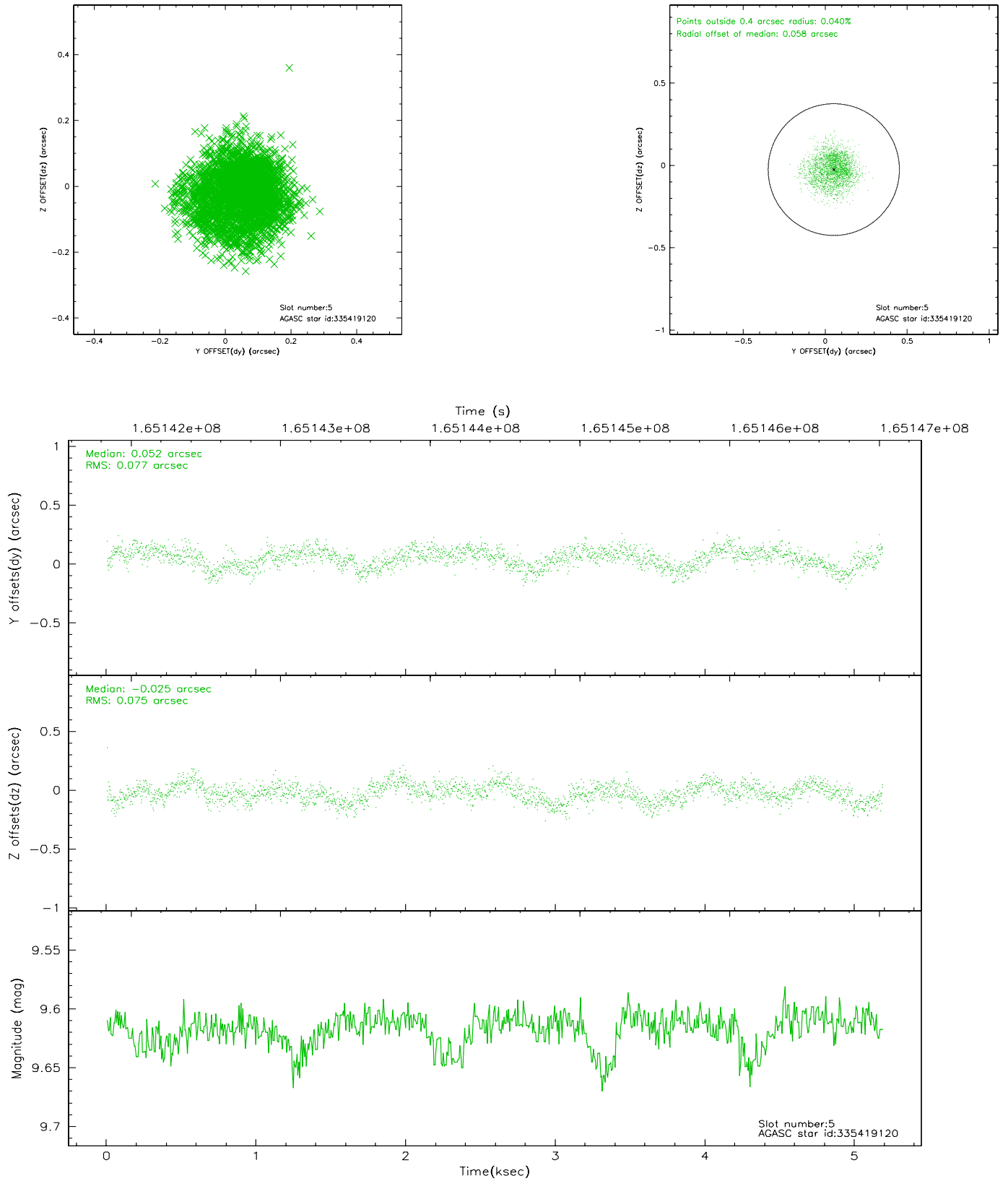
2.4.1 Slot 3



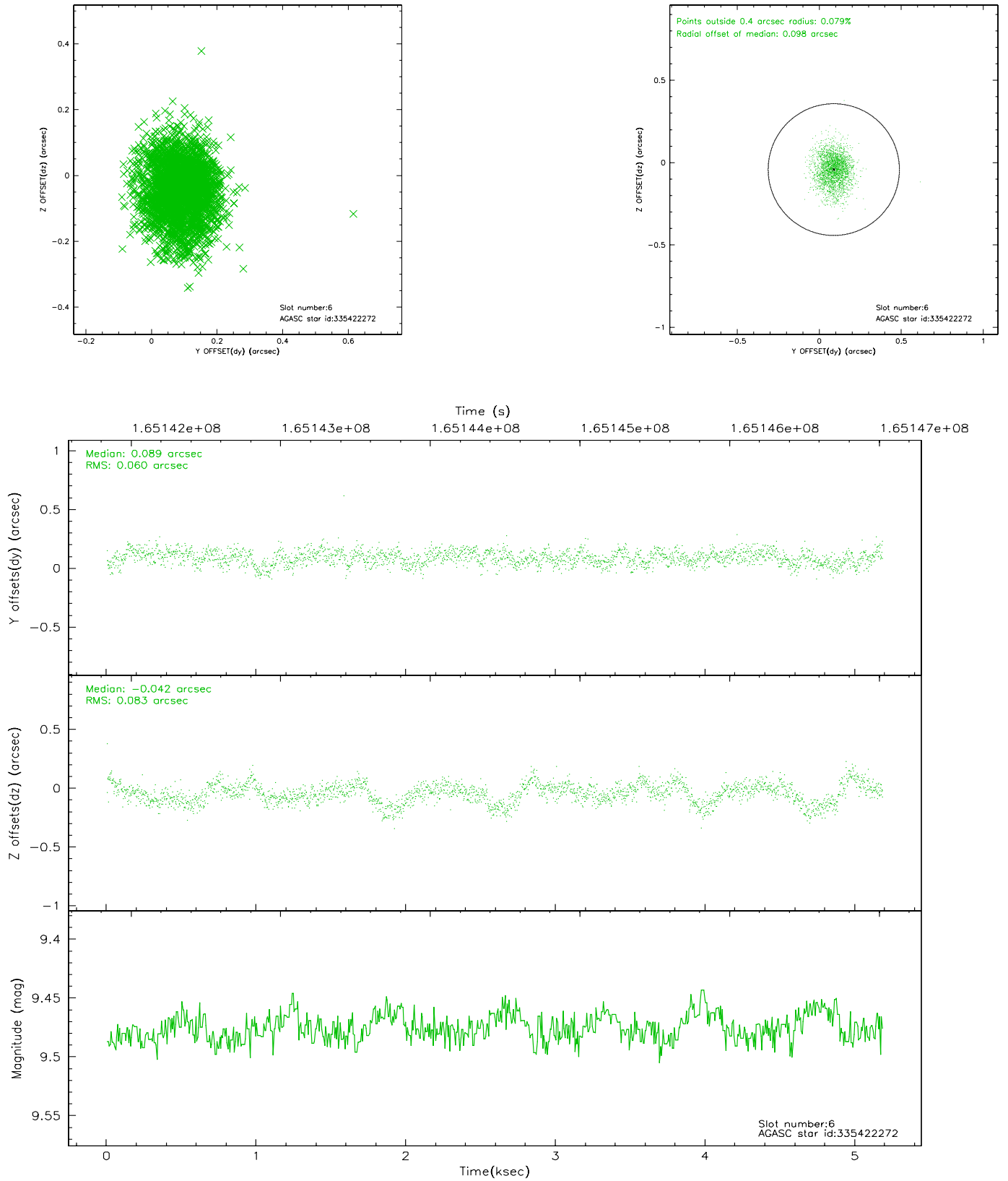
2.4.2 Slot 4



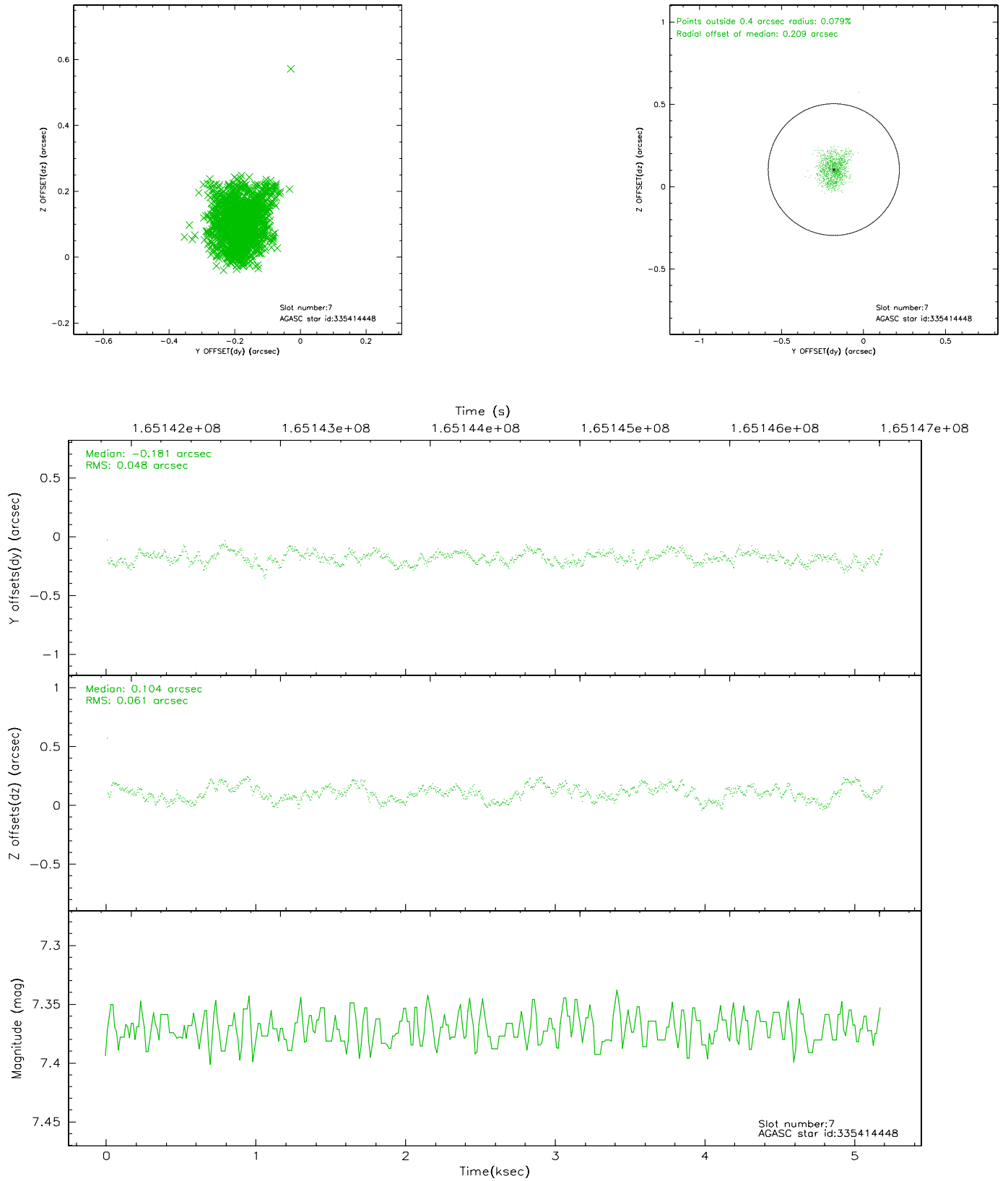
2.4.3 Slot 5



2.4.4 Slot 6

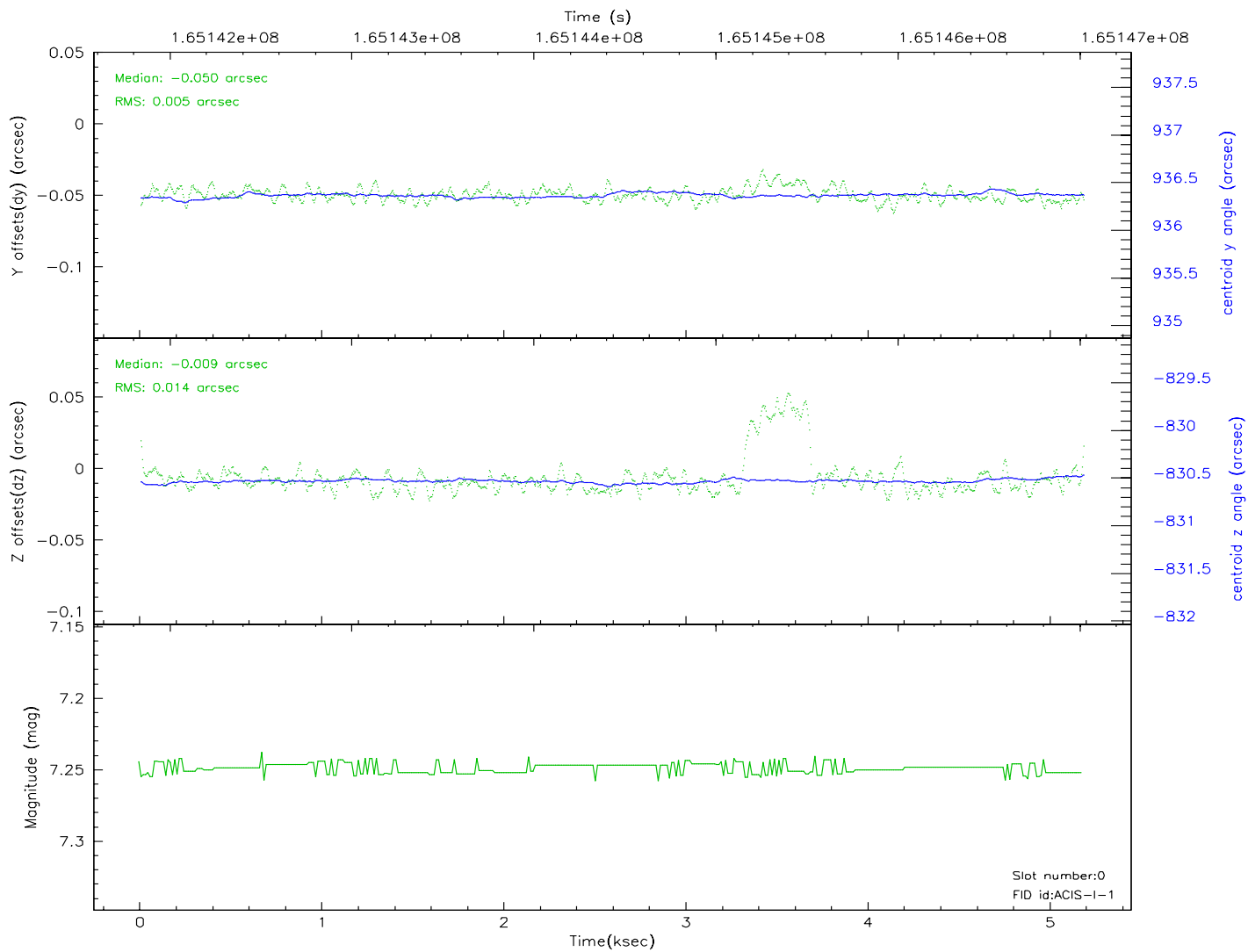
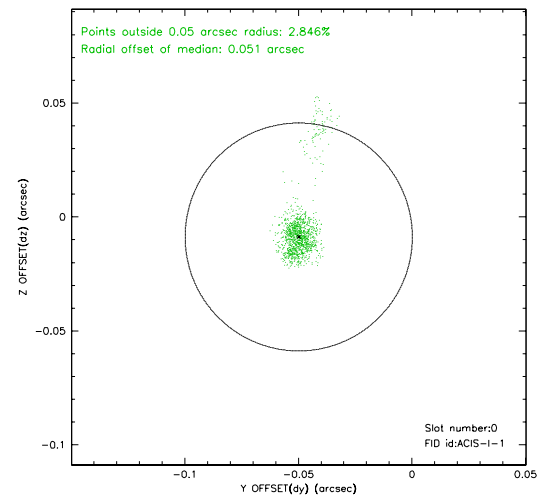
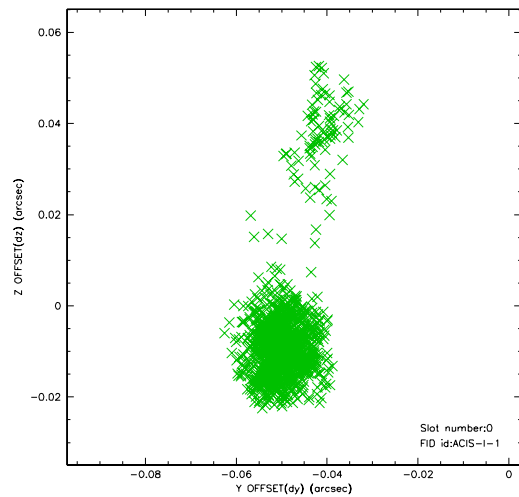


2.4.5 Slot 7

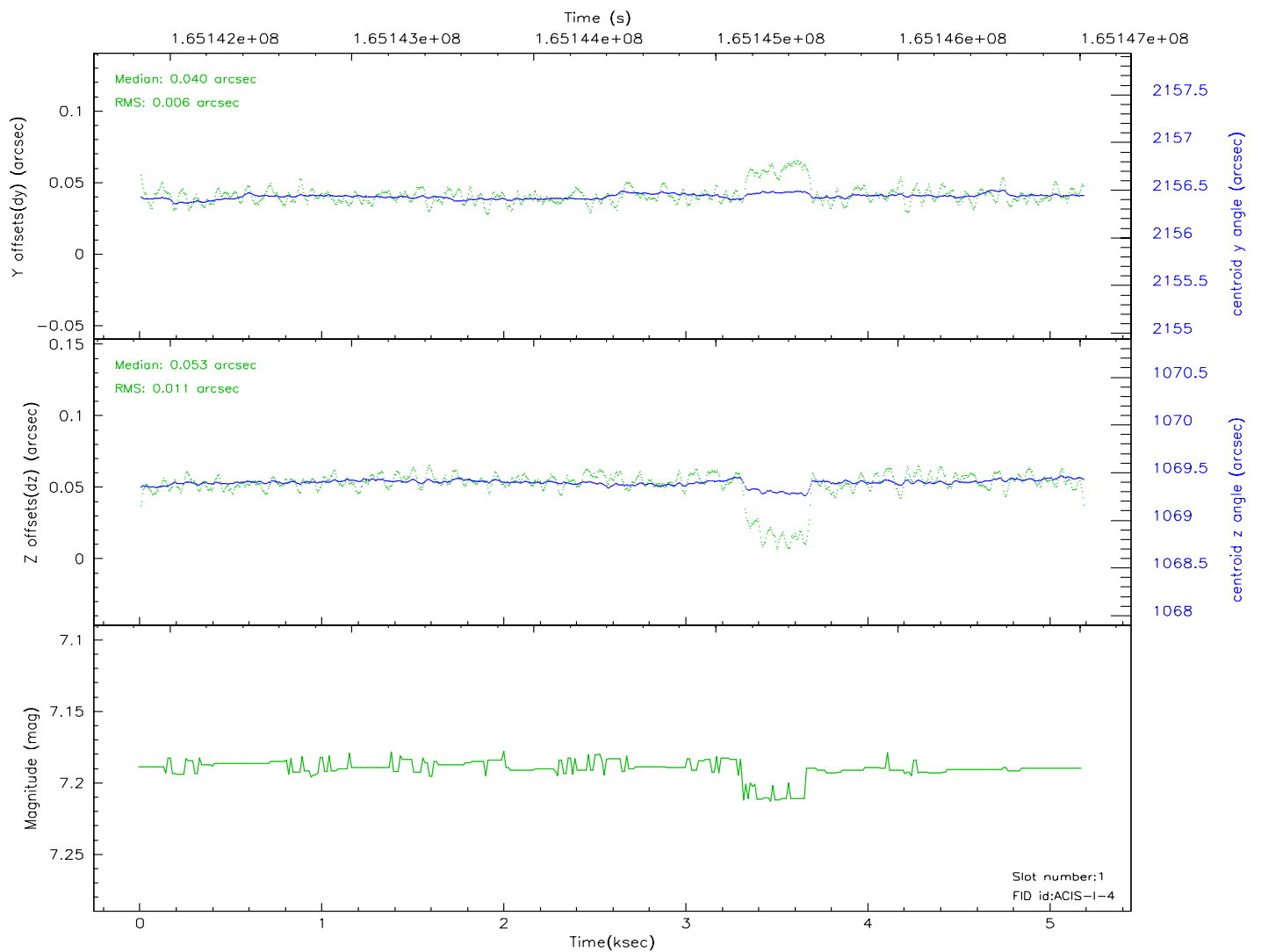
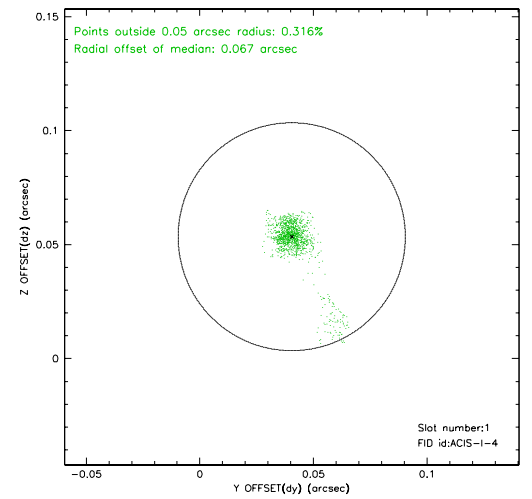
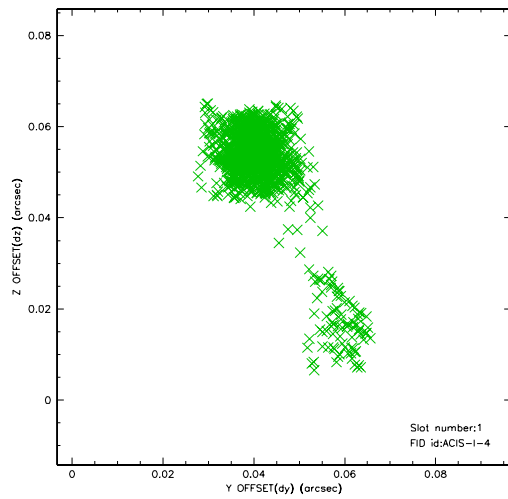


2.5 FID Slots

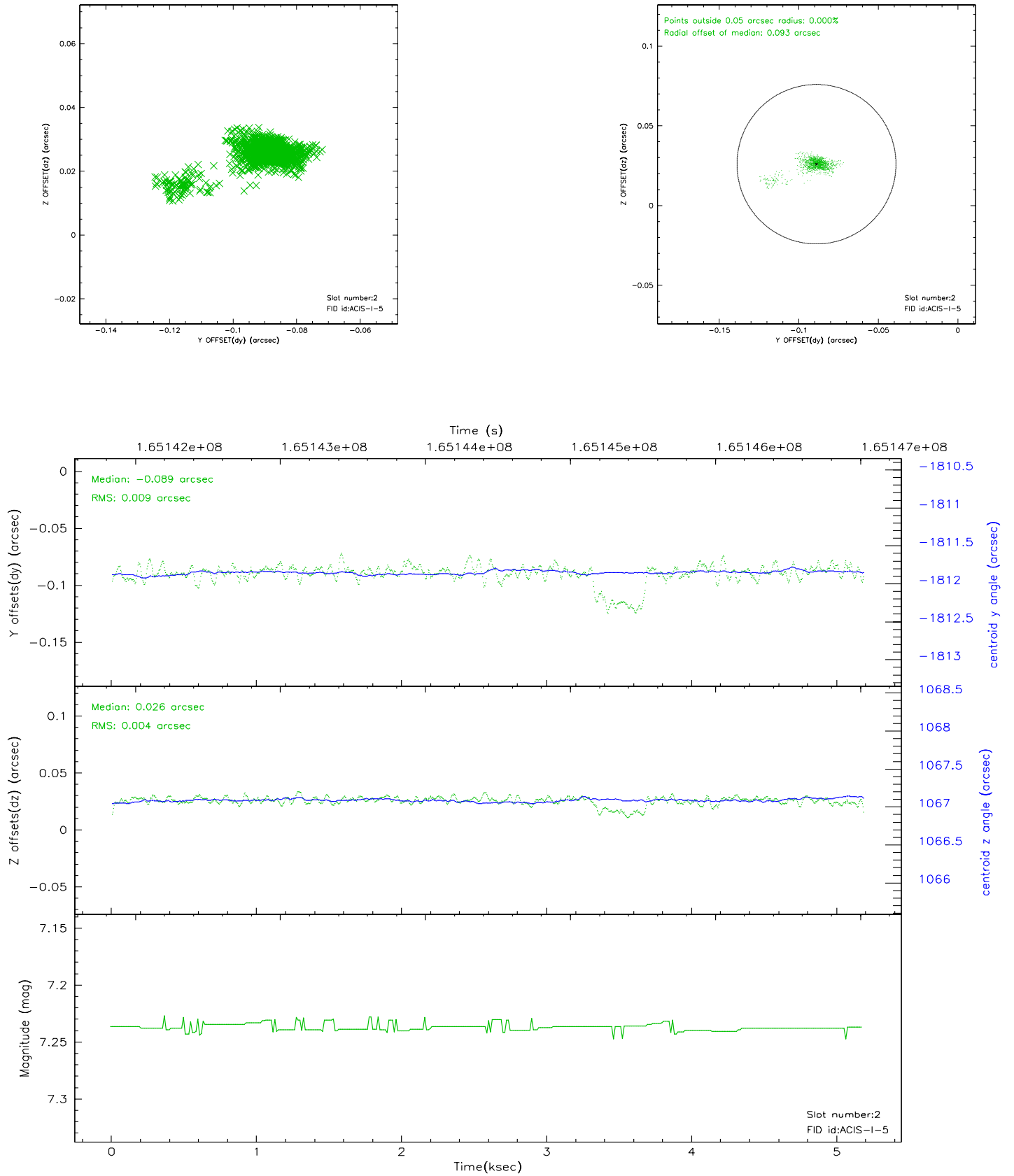
2.5.1 Slot 0



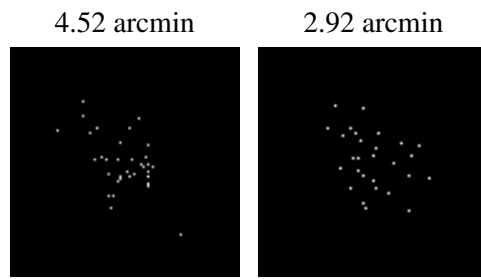
2.5.2 Slot 1



2.5.3 Slot 2



3 Point Sources



A Summary

A.1 Status

V&V Scientist	Jen Lauer
V&V Date (YYYY-MM-DD)	2006.07.30
V&V Edition	1
V&V Disposition and Status	OK
V&V Charge Time	4.777

A.2 Comments