

V&V Reference Report

L2 ASCDS Version : 7.6.9

Observation 4217 - L2 Version 001
Chandra X-Ray Center

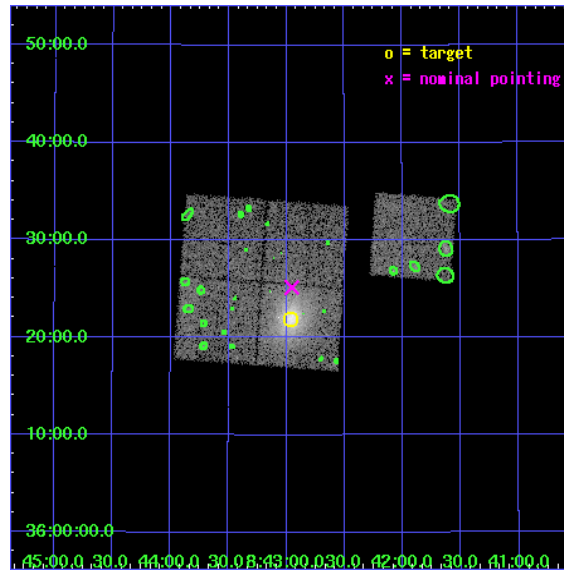
L2 Processing Date : Oct 15 2006

Contents

1	Front	2
2	OBI	3
2.1	OBI	3
2.1.1	Images	3
2.1.2	Bias	3
2.1.3	Parameters	4
2.1.4	Events	4
2.2	Compared Parameters	5
2.3	Aspect	6
2.4	Star Slots	9
2.4.1	Slot 3	9
2.4.2	Slot 4	10
2.4.3	Slot 5	11
2.4.4	Slot 6	12
2.4.5	Slot 7	13
2.5	FID Slots	14
2.5.1	Slot 0	14
2.5.2	Slot 1	15
2.5.3	Slot 2	16
3	Point Sources	17
A	Summary	18
A.1	Status	18
A.2	Comments	18

1 Front

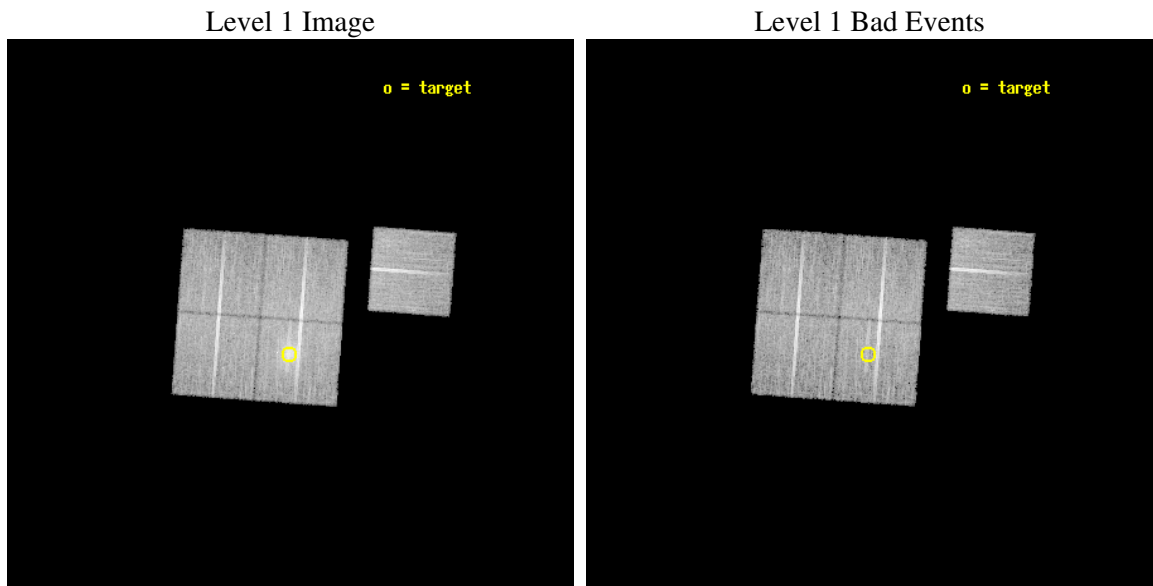
seq_num	800373
obs_id	4217
title	X-RAY/SZ DETERMINATION OF COSMOLOGICAL PARAMETERS, PART II
observer	DR. LEON VANSPEYBROECK
object	A697
dtcycle	0
cycle	P
ra_targ	130.740833
dec_targ	36.365
ra_nom	130.73834666579
dec_nom	36.419247847273
roll_nom	94.209202908631
revision	2
ontime	19774.858991772
livetime	19516.485901005
ontime0	19777.999961972
ontime1	19774.85896185
ontime2	19777.999961972
ontime3	19774.858991772
ontime6	19774.858981729
l2events	60698



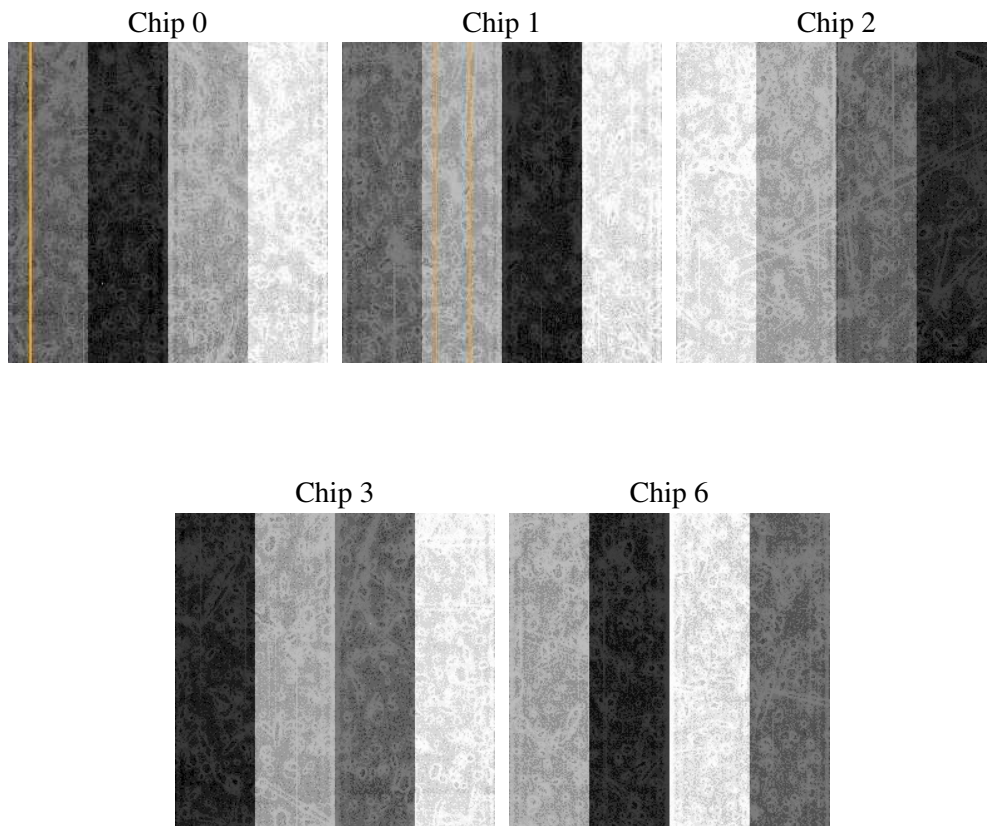
2 OBI

2.1 OBI

2.1.1 Images



2.1.2 Bias



2.1.3 Parameters

obi_num	0
ascdsver	7.6.9
caldbver	3.2.3
date	2006-10-15T03:34:10
revision	2

sched_exp_time	20000.000000
ontime	19778.920514882
ontime0	19782.06145516
ontime1	19778.920455039
ontime2	19782.06145516
ontime3	19778.920514882
ontime6	19778.920474917
l1events	522040

2.1.4 Events

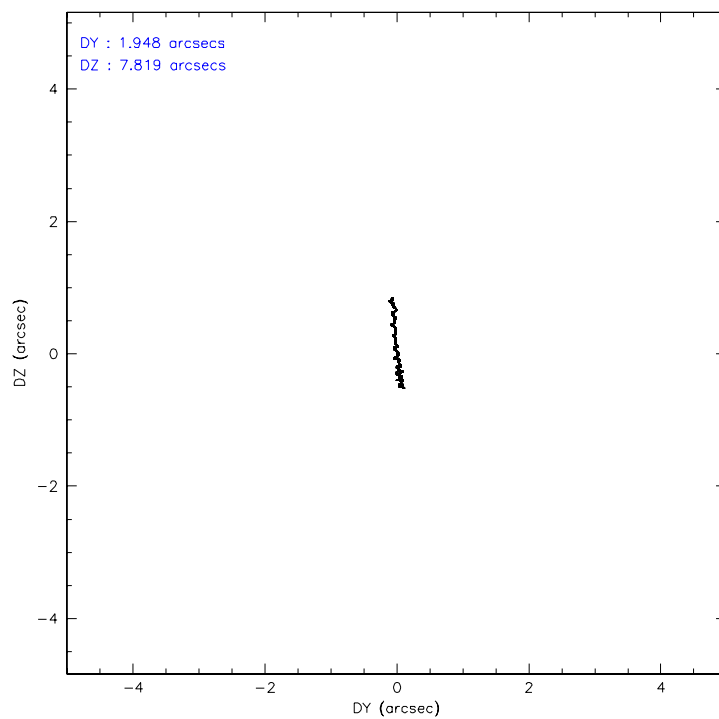
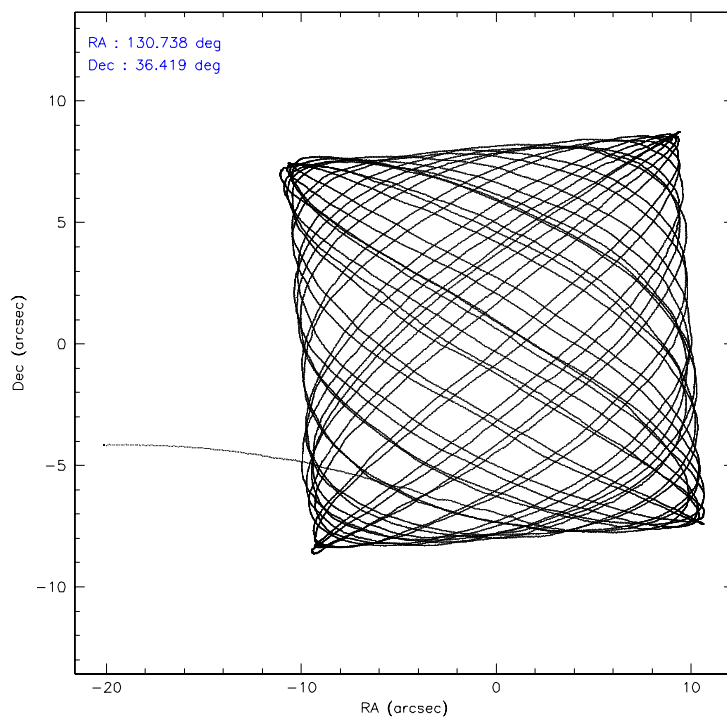
	ccd 0	ccd 1	ccd 2	ccd 3	ccd 6
level 1 events	93376	98099	105734	121528	103303
rejected events	83316	86165	95402	93849	92748
rejected %	89%	87%	90%	77%	89%

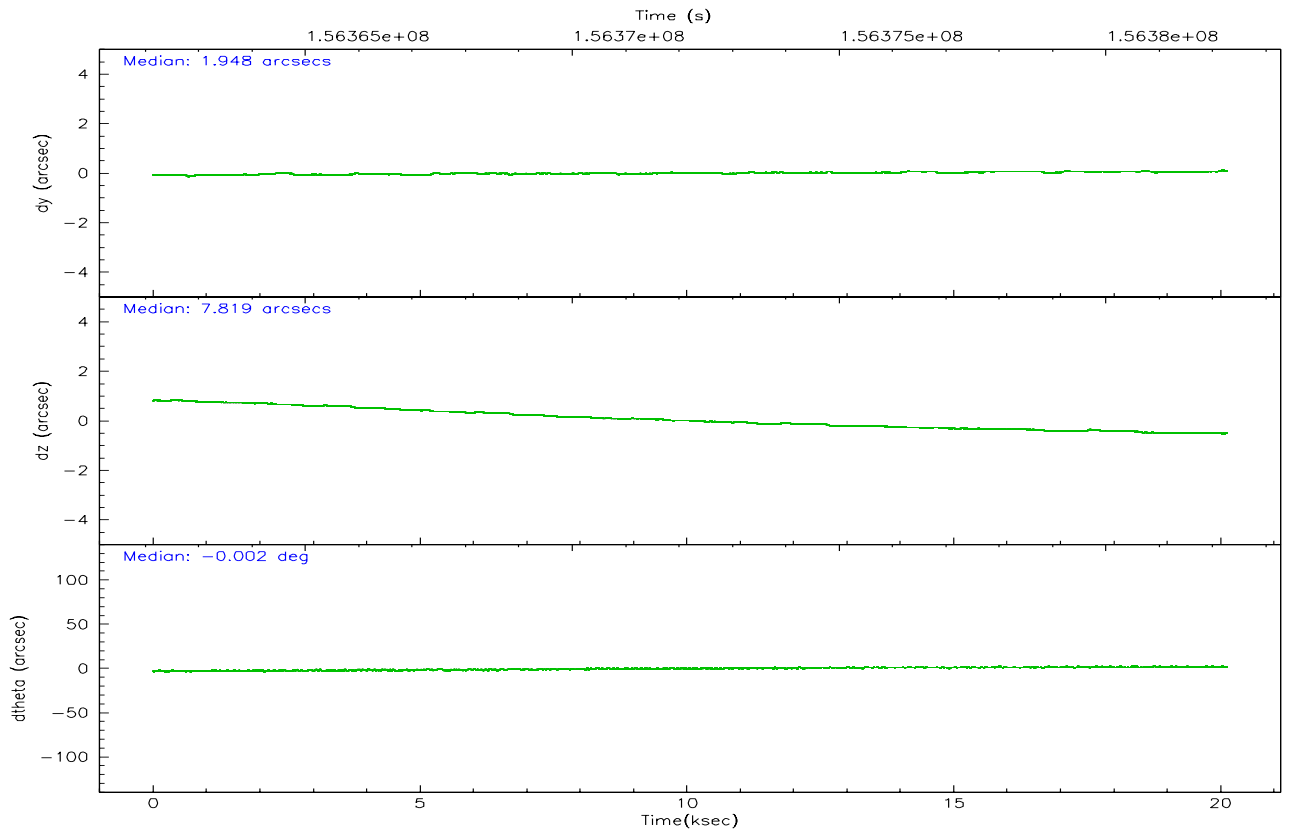
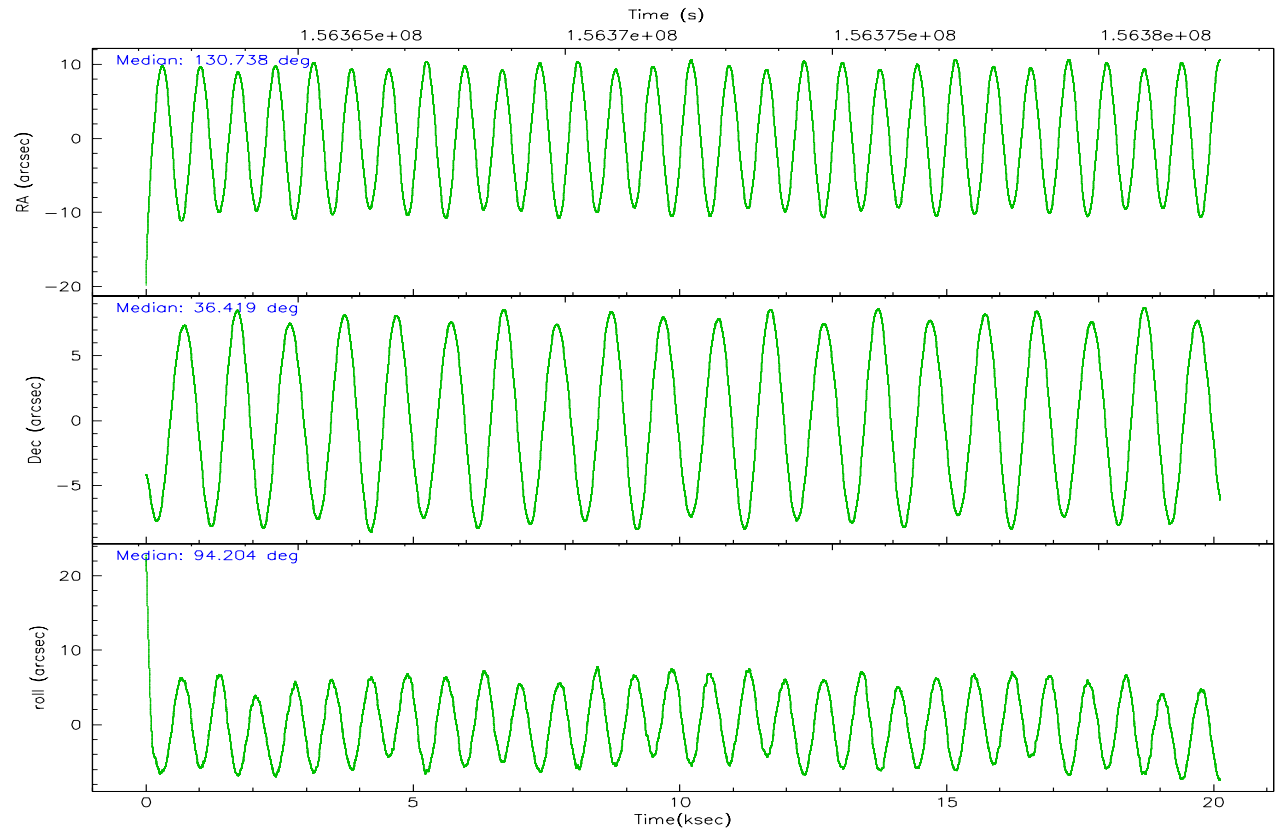
	ccd 0	ccd 1	ccd 2	ccd 3	ccd 6
grade 0 events	3572	4616	4079	18093	3759
	3%	4%	3%	14%	3%
grade 1 events	51	46	33	125	36
	0%	0%	0%	0%	0%
grade 2 events	2312	2522	2244	3808	2228
	2%	2%	2%	3%	2%
grade 3 events	1208	1299	1080	1754	1214
	1%	1%	1%	1%	1%
grade 4 events	1085	1308	1141	1722	1140
	1%	1%	1%	1%	1%
grade 5 events	3439	3631	3301	3766	3790
	3%	3%	3%	3%	3%
grade 6 events	1884	2189	1788	2303	2215
	2%	2%	1%	1%	2%
grade 7 events	79825	82488	92068	89957	88921
	85%	84%	87%	74%	86%

2.2 Compared Parameters

Parameter	Planned	Actual	Parameter	Planned	Actual
Instrument	ACIS	ACIS	Obspar format version number	6	6
Detector	ACIS-01236	ACIS-01236	Obspar file type	PREDICTED	ACTUAL
Grating	NONE	NONE	Obspar update status	NONE	UPDATED
Data mode	VFAINT	VFAINT	Number of optional ACIS chips dropped	0	0
Observation mode	POINTING	POINTING	On-chip summing requested	N	N
Pointing RA	130.757596	130.7383466657946	Subarray requested	NONE	NONE
Pointing Dec	36.396691	36.41924784727257	Alternating exposures requested	N	N
Pointing Roll	93.989084	94.20920290863141	Primary exposure time	0.000000	3.1
SIM focus pos (mm)	-0.782348	-0.7809083437167272			
SIM defocus (mm)	0	0.001439871863259334			
SIM translation stage pos (mm)	-225.840463	-225.8458576473255			
SIM translation stage offset (mm)	-7.752	-7.746595355604228			
Observation start time	156362270.184000	156361239.8836			
Observation start date	2002-12-15T17:56:46	2002-12-15T17:40:39			
Observation end time	156382270.184000	156382506.58449			
Observation end date	2002-12-15T23:30:06	2002-12-15T23:35:06			
Read mode	TIMED	TIMED			

2.3 Aspect



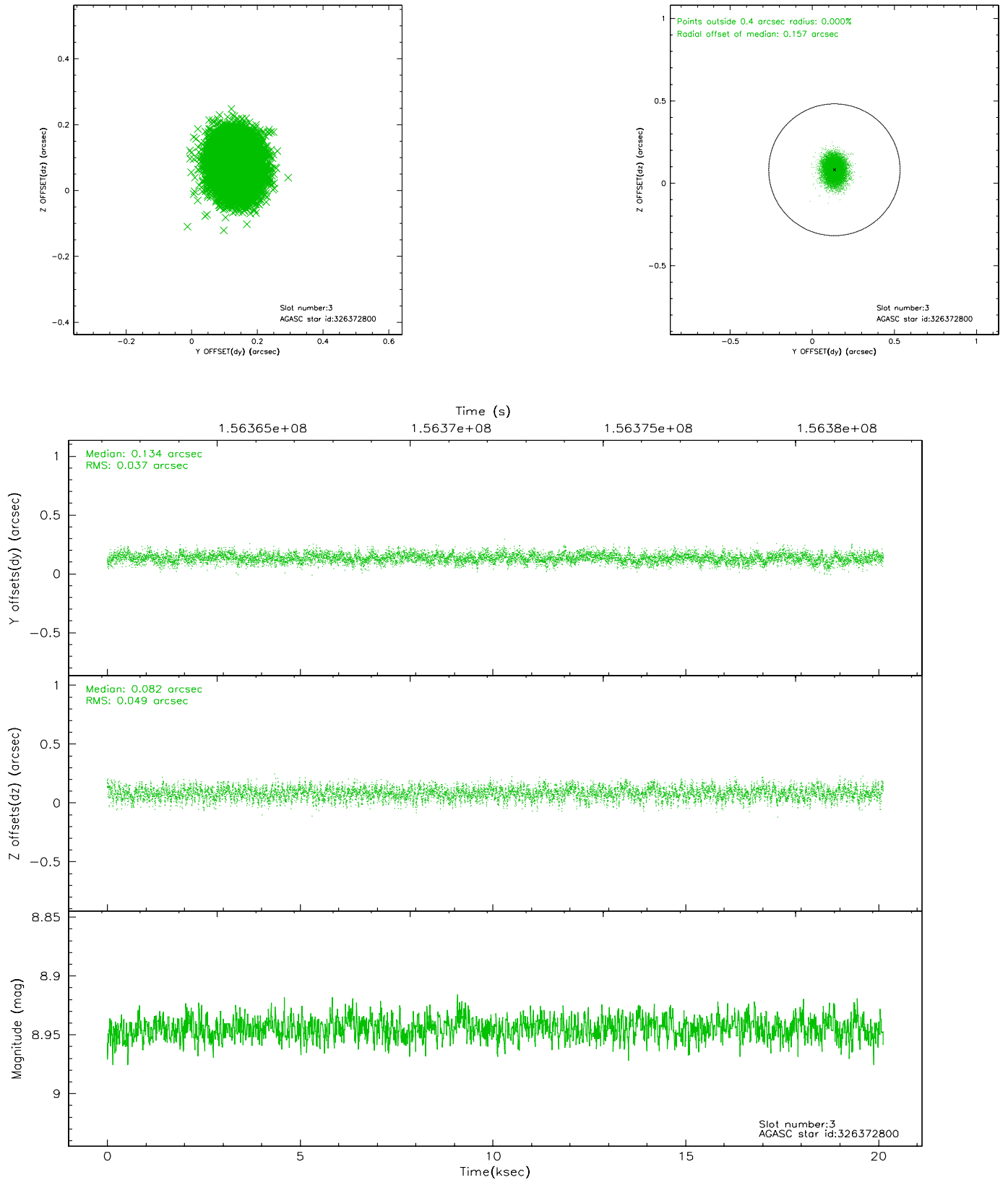


Slot Statistics

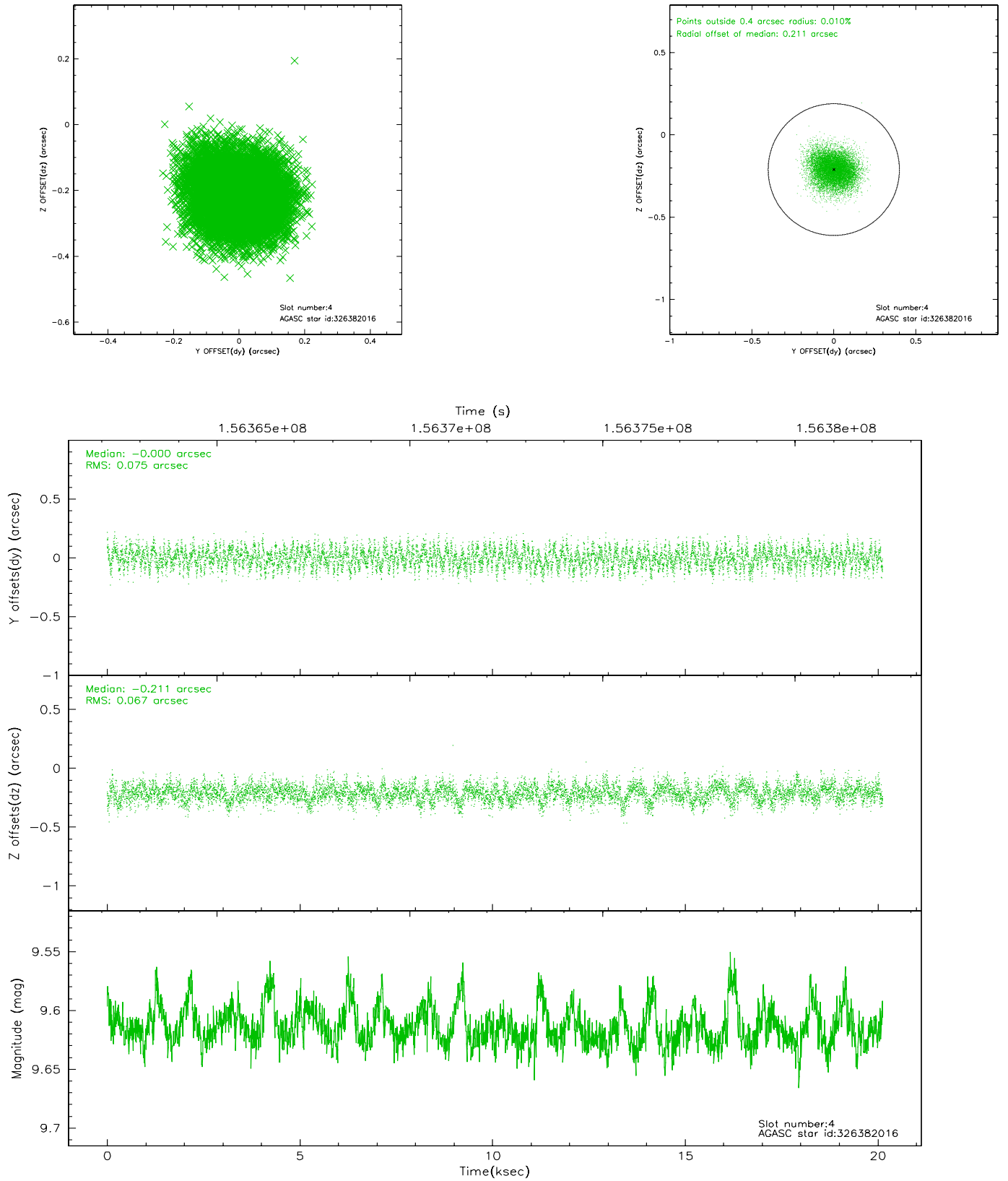
slot	status	id	mag	n_pts	med_dy	med_dz	dr1	dr2	ra	dec	mean_y	mean_z
0	FID	ACIS-I-1	7.23	4910	0.042	-0.004	0.025	0.039	0.000000	0.000000	937.77	-990.34
1	FID	ACIS-I-5	7.22	4910	-0.119	0.076	0.019	0.033	0.000000	0.000000	-1810.39	907.11
2	FID	ACIS-I-6	7.26	4910	-0.015	0.002	0.012	0.021	0.000000	0.000000	403.06	1551.75
3	GUIDE	326372800	8.94	9818	0.134	0.082	0.066	0.105	131.462360	35.854525	-2081.83	-1916.42
4	GUIDE	326382016	9.62	9805	-0.000	-0.211	0.108	0.171	130.062959	36.685792	1185.11	1927.19
5	GUIDE	326382712	6.77	9820	-0.105	0.171	0.072	0.113	131.042224	36.918345	1818.13	-947.53
6	GUIDE	326379304	8.49	9819	0.174	-0.153	0.056	0.092	130.301704	35.966005	-1450.63	1432.37
7	GUIDE	326374672	8.45	9817	-0.200	0.115	0.078	0.123	131.209149	37.086784	2391.59	-1466.46

2.4 Star Slots

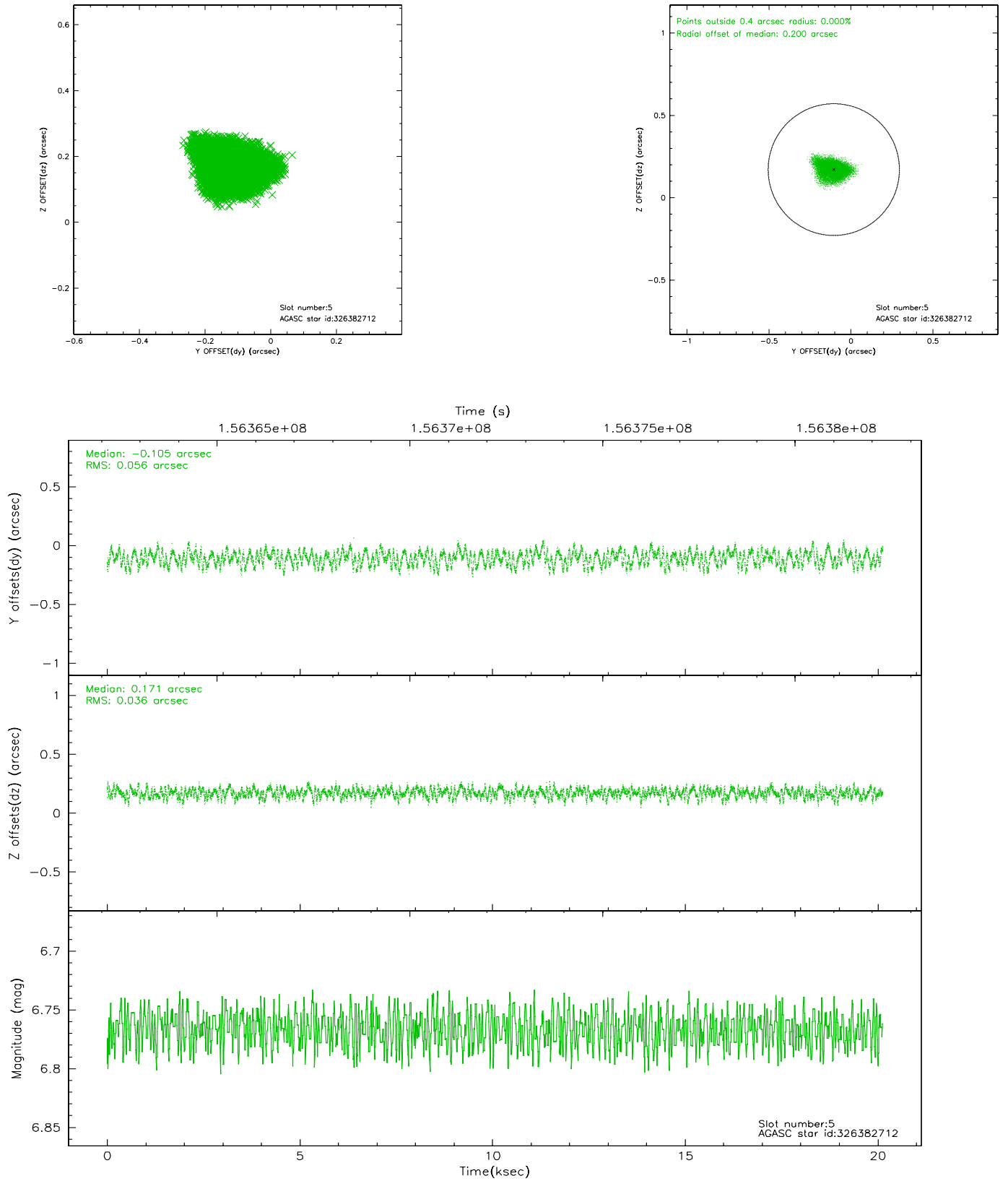
2.4.1 Slot 3



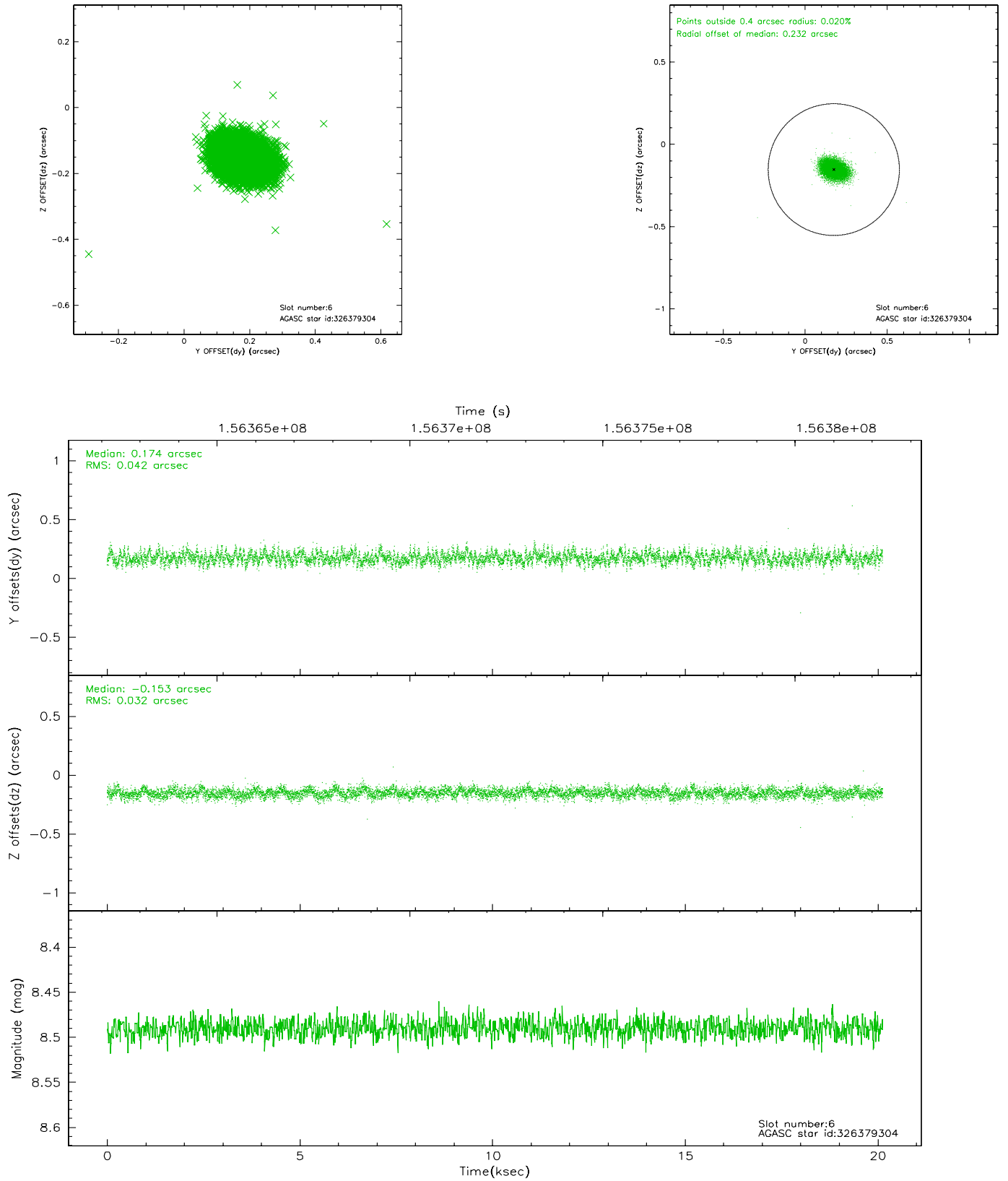
2.4.2 Slot 4



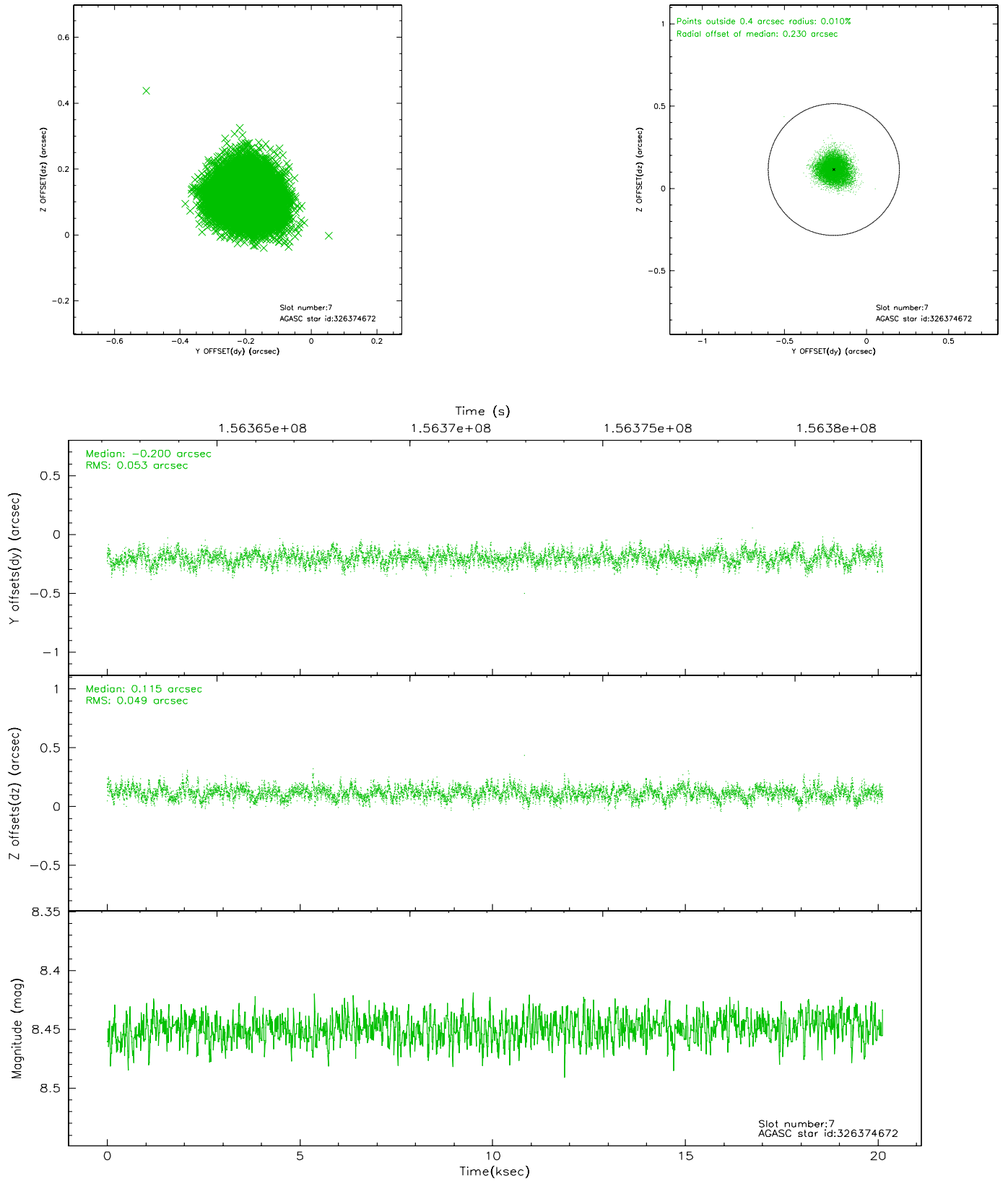
2.4.3 Slot 5



2.4.4 Slot 6

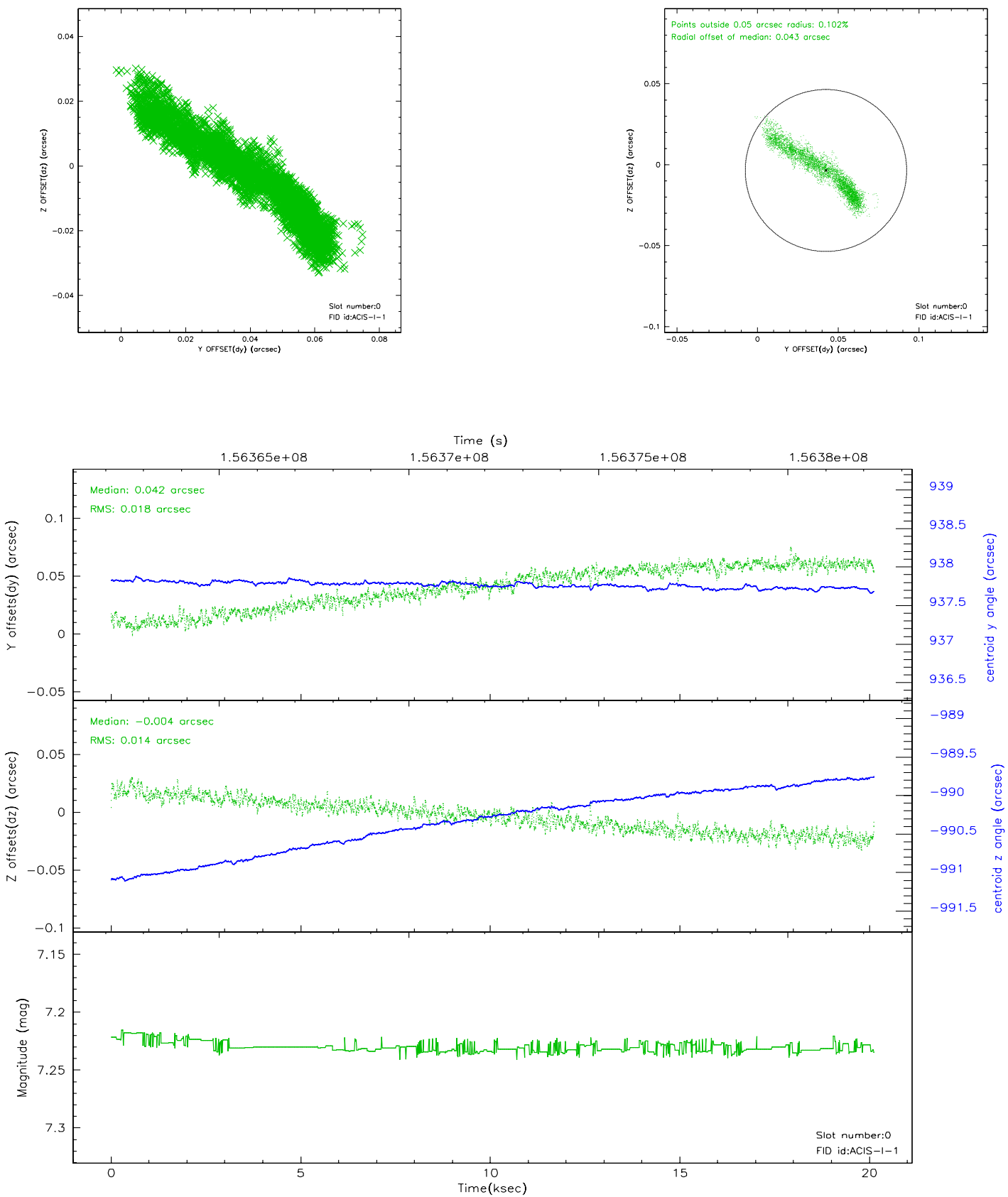


2.4.5 Slot 7

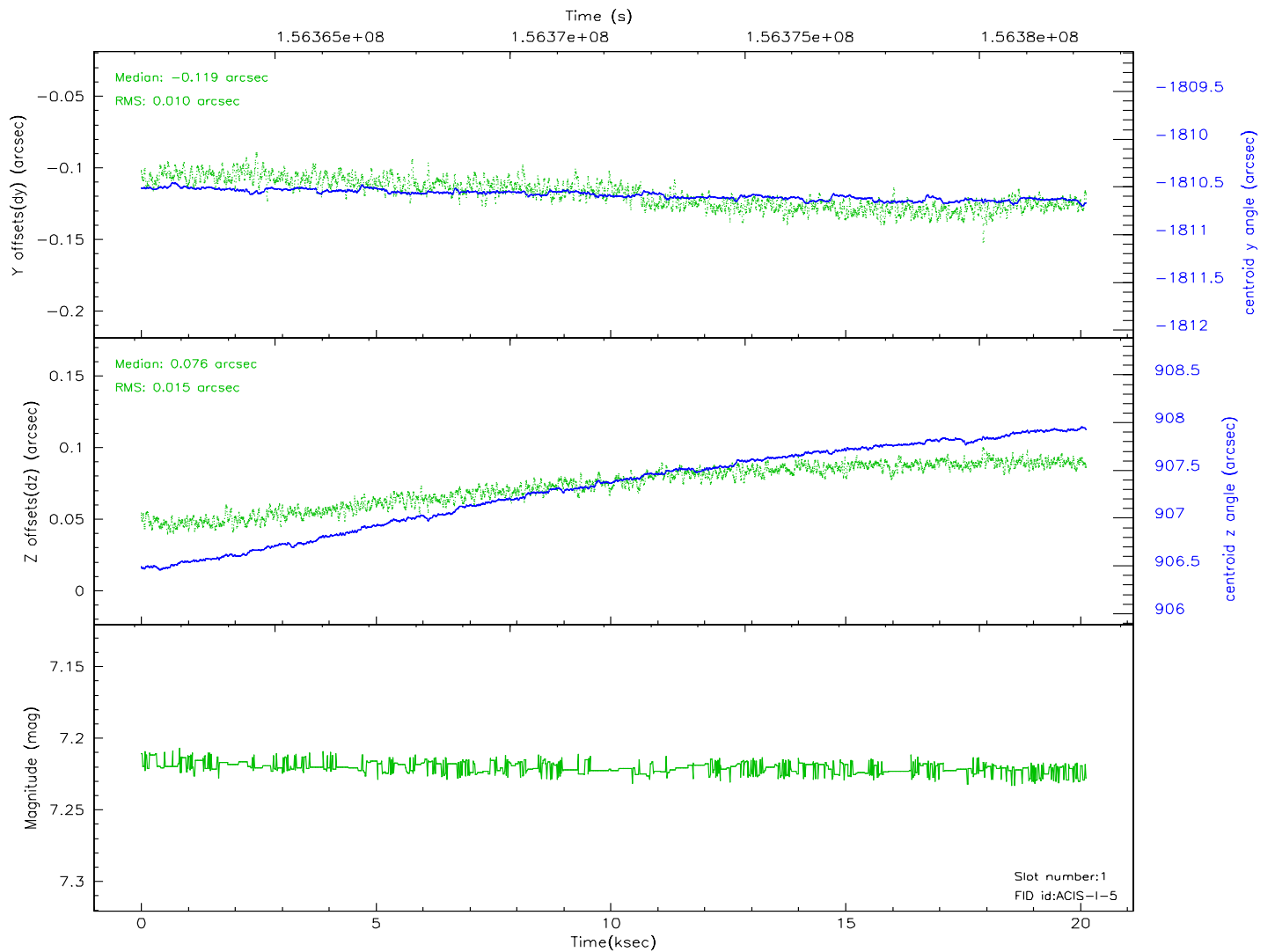
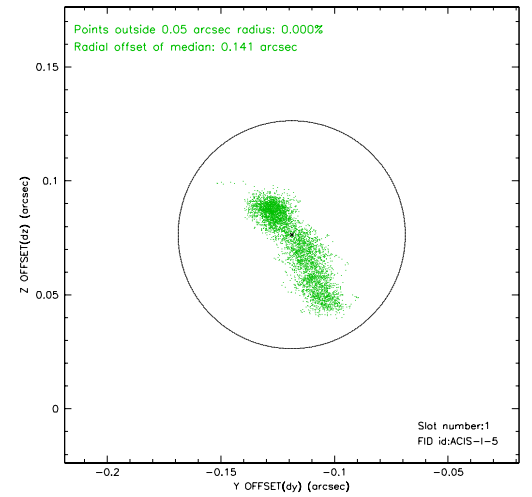
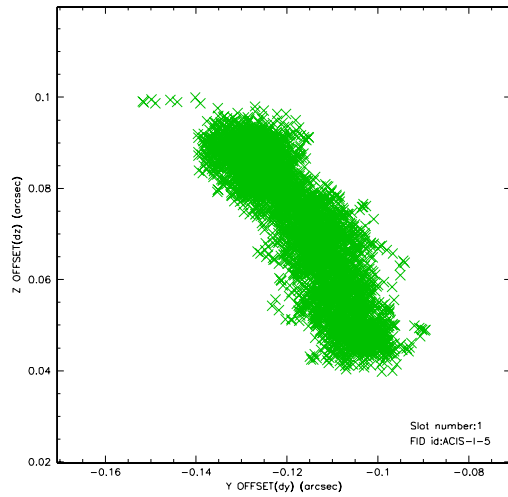


2.5 FID Slots

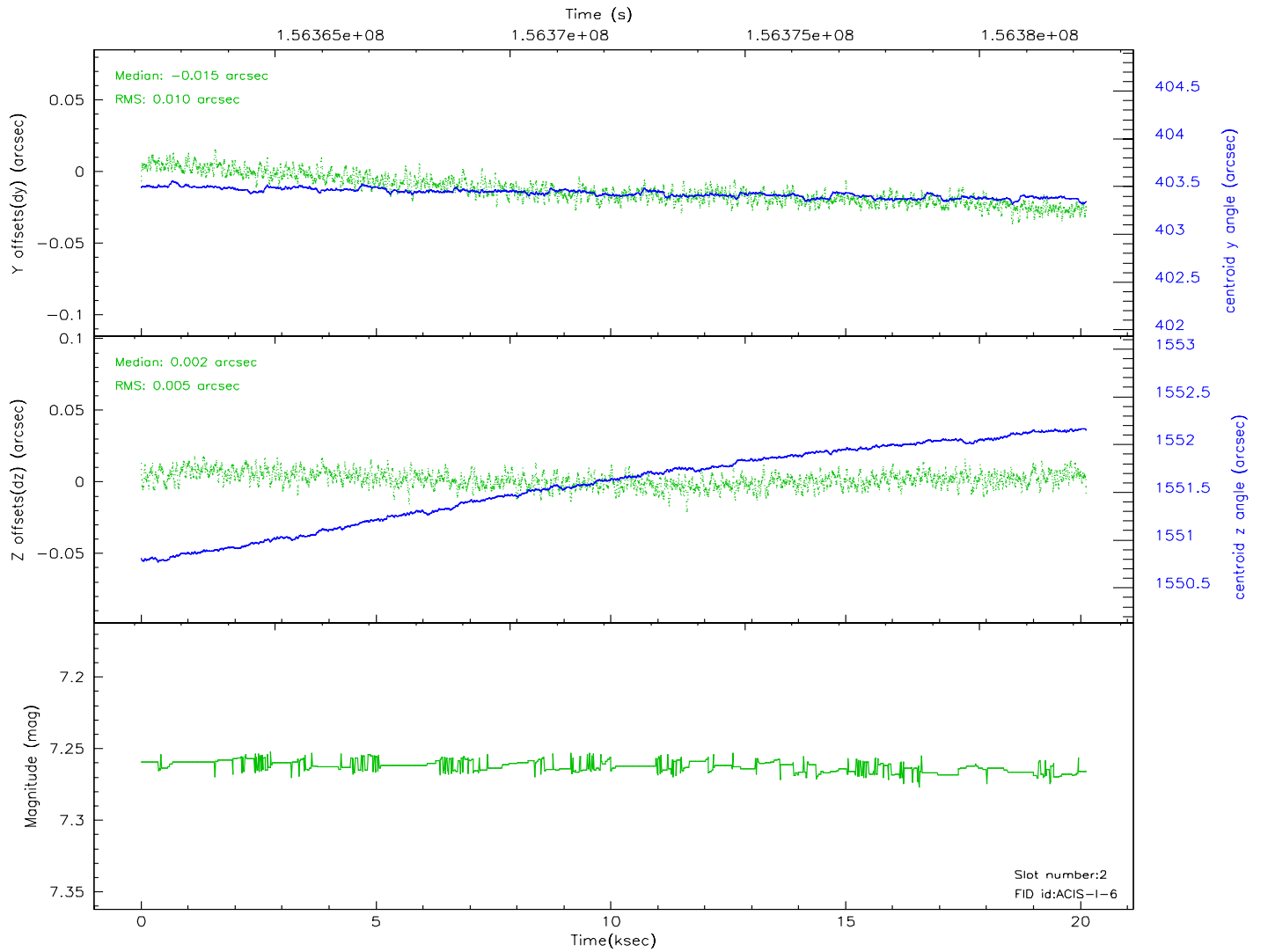
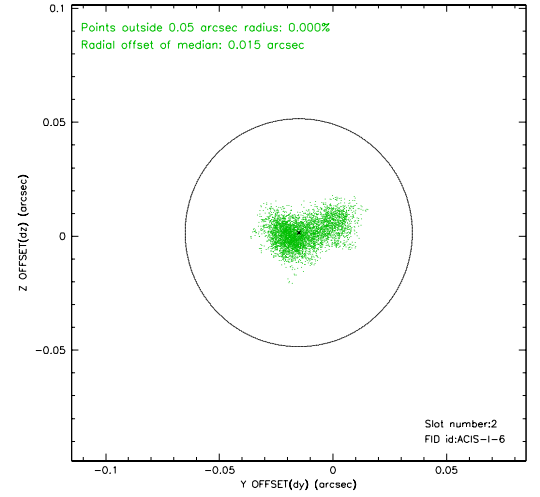
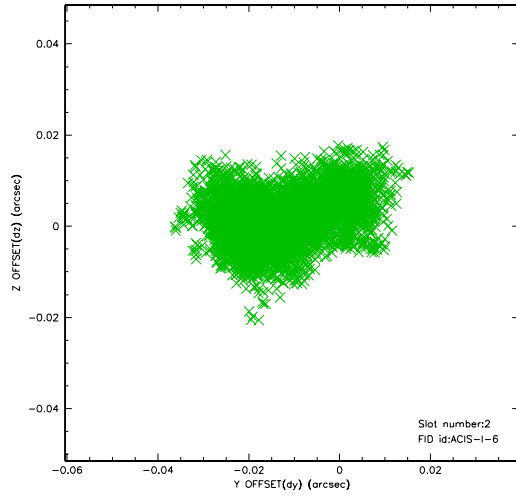
2.5.1 Slot 0



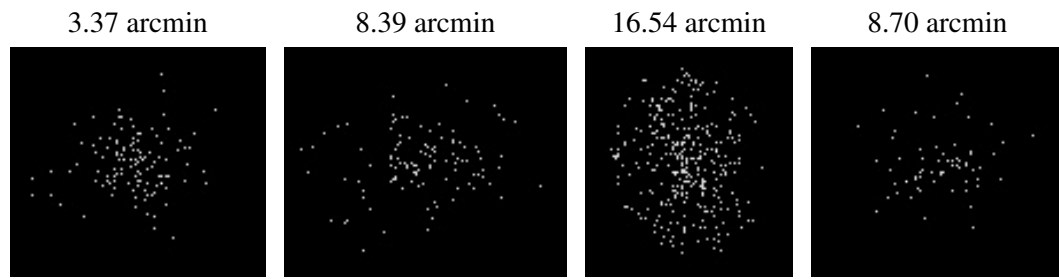
2.5.2 Slot 1



2.5.3 Slot 2



3 Point Sources



A Summary

A.1 Status

V&V Scientist	Jen Lauer
V&V Date (YYYY-MM-DD)	2006.10.16
V&V Edition	1
V&V Disposition and Status	OK
V&V Charge Time	19.775

A.2 Comments