

V&V Reference Report

L2 ASCDS Version : 7.6.8

Observation 4197 - L2 Version 001
Chandra X-Ray Center

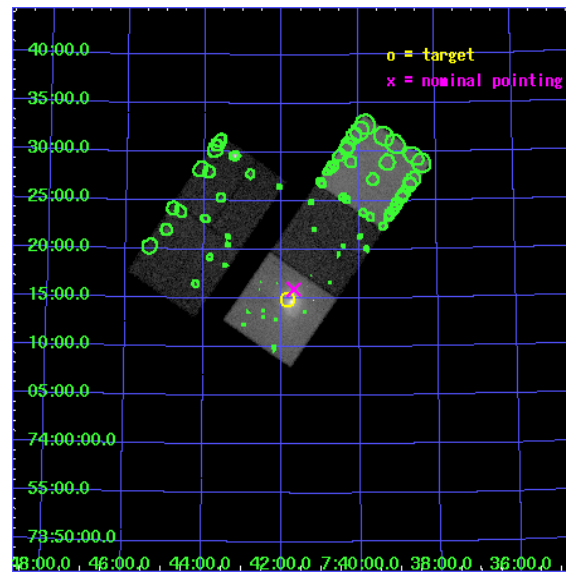
L2 Processing Date : Jun 26 2006

Contents

1	Front	2
2	OBI	3
2.1	OBI	3
2.1.1	Images	3
2.1.2	Bias	3
2.1.3	Parameters	4
2.1.4	Events	4
2.2	Compared Parameters	5
2.3	Aspect	6
2.4	Star Slots	9
2.4.1	Slot 3	9
2.4.2	Slot 4	10
2.4.3	Slot 5	11
2.4.4	Slot 6	12
2.4.5	Slot 7	13
2.5	FID Slots	14
2.5.1	Slot 0	14
2.5.2	Slot 1	15
2.5.3	Slot 2	16
3	Point Sources	17
A	Summary	18
A.1	Status	18
A.2	Comments	18

1 Front

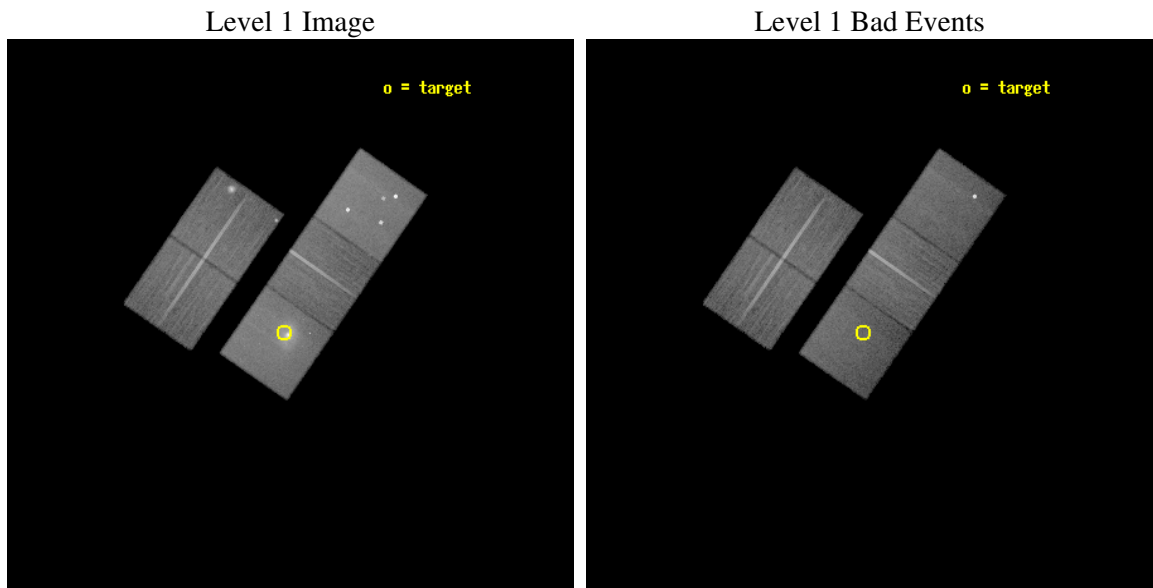
seq_num	800353
obs_id	4197
title	REDUCED COOLING & FEEDBACK IN CLUSTER COOLING FLOWS
observer	Prof. Brian McNamara
object	MS0735.6+7421
dtcycle	0
cycle	P
ra_targ	115.459167
dec_targ	74.2475
ra_nom	115.42101788264
dec_nom	74.265479776569
roll_nom	124.70207621301
revision	2
ontime	46118.699911326
livetime	45516.125144892
ontime2	46118.699911326
ontime3	46118.699911326
ontime5	46118.699911326
ontime6	46112.417960823
ontime7	46118.699911326
l2events	332492



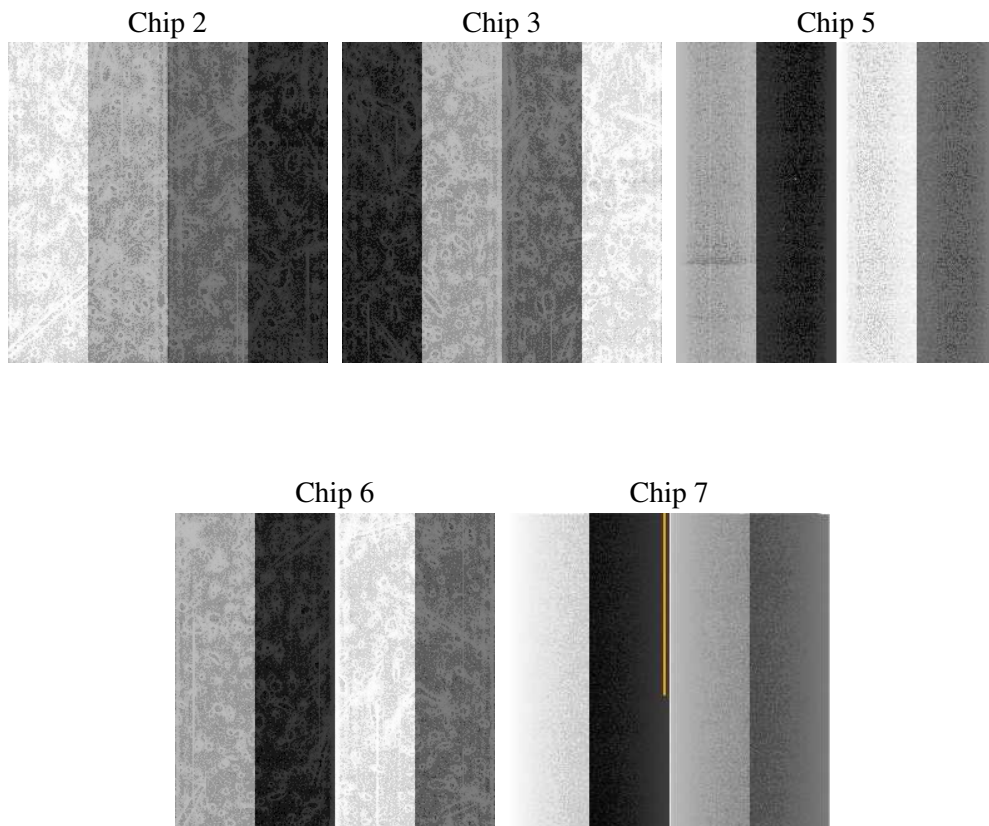
2 OBI

2.1 OBI

2.1.1 Images



2.1.2 Bias



2.1.3 Parameters

obi_num	1
ascdsver	7.6.8
caldbver	3.2.2
date	2006-06-27T01:55:30
revision	2

sched_exp_time	45986.499000
ontime	46464.927954406
ontime2	46468.068954587
ontime3	46468.068954587
ontime5	46464.927954406
ontime6	46461.787004083
ontime7	46464.927954406
l1events	1229399

2.1.4 Events

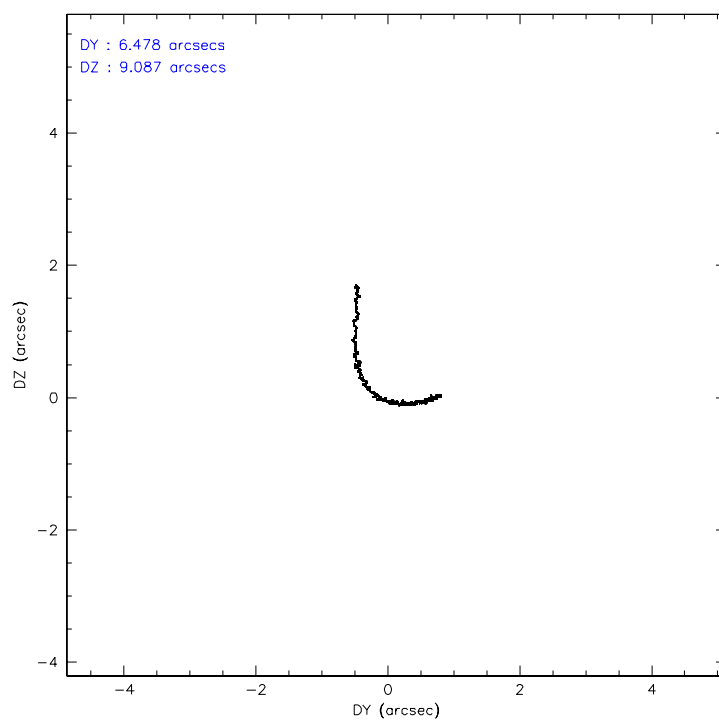
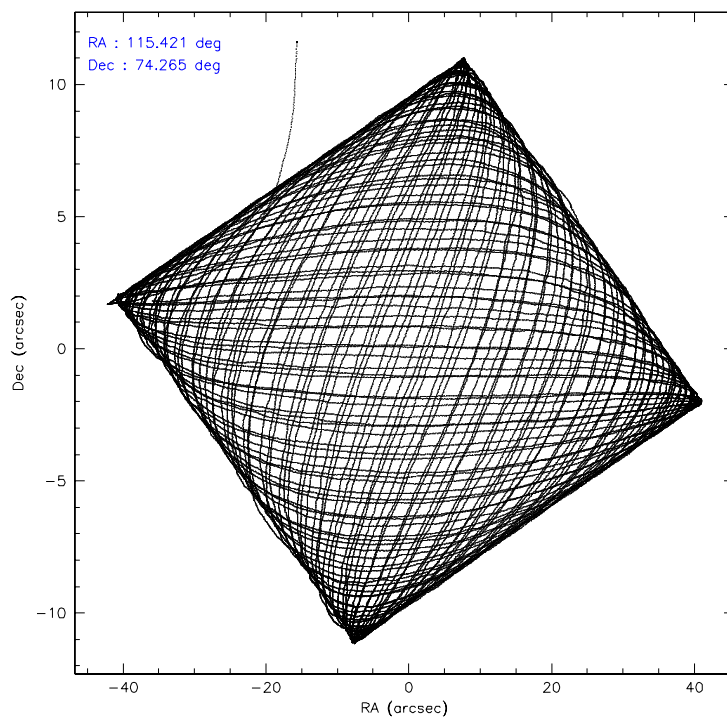
	ccd 2	ccd 3	ccd 5	ccd 6	ccd 7
level 1 events	217215	205350	308455	211389	286990
rejected events	189003	185405	158882	188131	139330
rejected %	87%	90%	51%	88%	48%

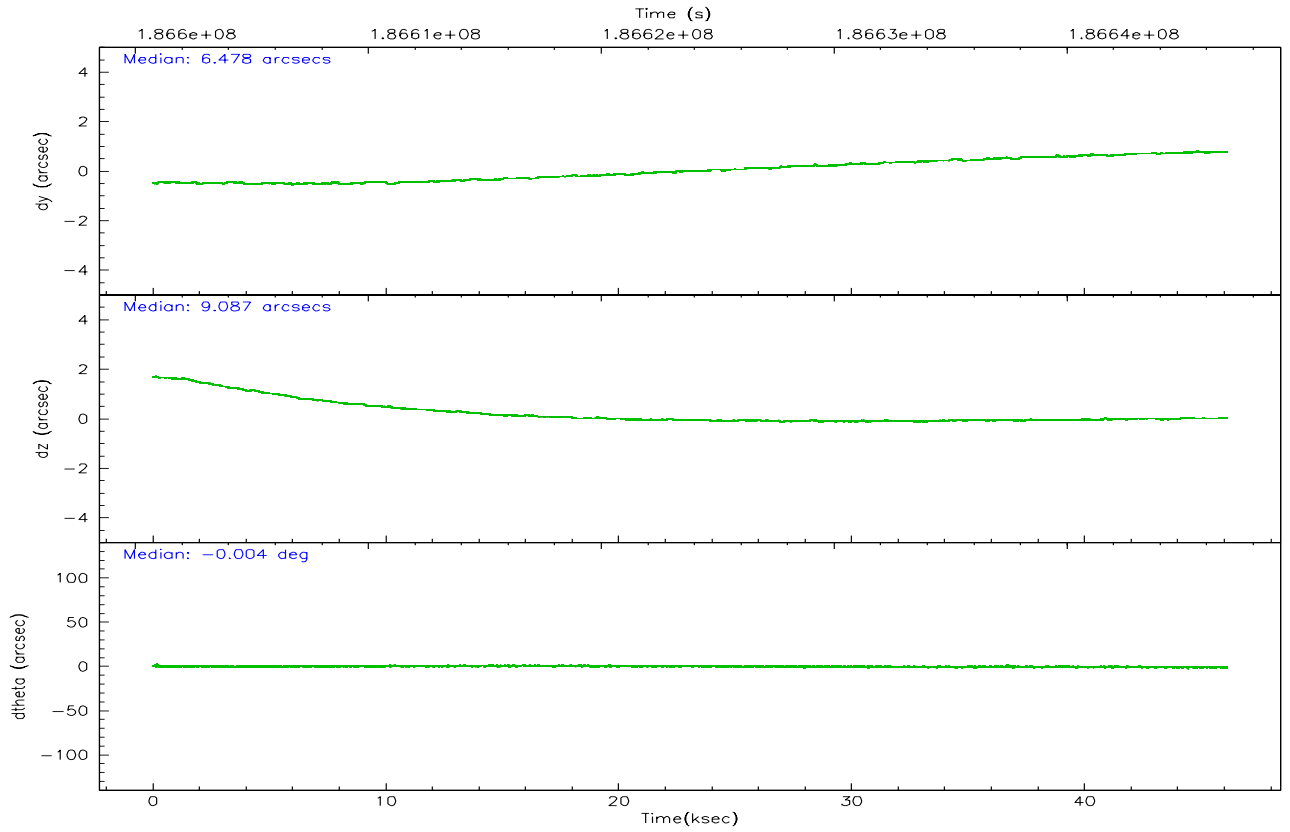
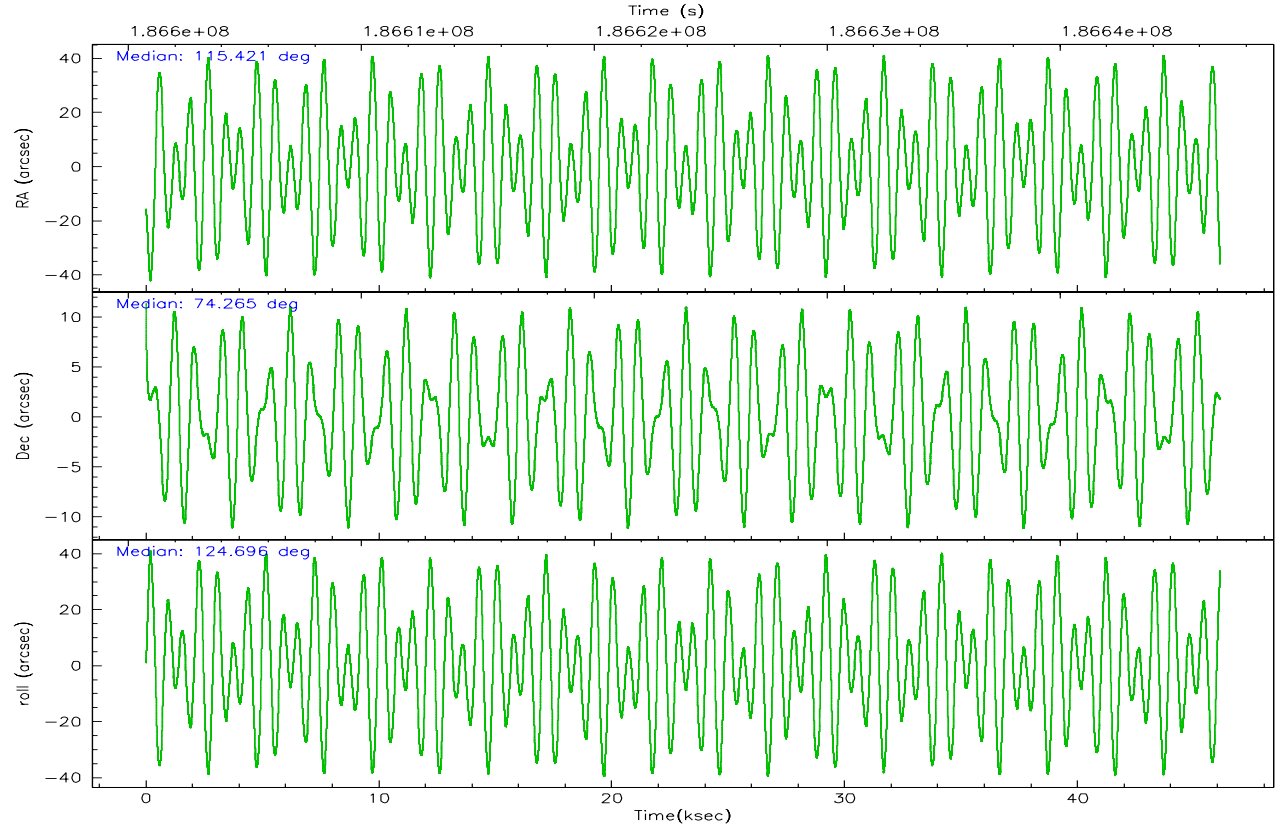
	ccd 2	ccd 3	ccd 5	ccd 6	ccd 7
grade 0 events	13955	7110	21180	8625	20958
	6%	3%	6%	4%	7%
grade 1 events	111	105	112	84	136
	0%	0%	0%	0%	0%
grade 2 events	5499	4304	46437	4879	37966
	2%	2%	15%	2%	13%
grade 3 events	2574	2404	3467	2570	11376
	1%	1%	1%	1%	3%
grade 4 events	2514	2287	3228	2575	11229
	1%	1%	1%	1%	3%
grade 5 events	7156	8414	16091	8765	18451
	3%	4%	5%	4%	6%
grade 6 events	3878	3988	76388	4768	67031
	1%	1%	24%	2%	23%
grade 7 events	181528	176738	141552	179123	119843
	83%	86%	45%	84%	41%

2.2 Compared Parameters

Parameter	Planned	Actual	Parameter	Planned	Actual
Instrument	ACIS	ACIS	Obspar format version number	6	6
Detector	ACIS-23567	ACIS-23567	Obspar file type	PREDICTED	ACTUAL
Grating	NONE	NONE	Obspar update status	NONE	UPDATED
Data mode	VFAINT	VFAINT	On-chip summing requested	N	N
Observation mode	POINTING	POINTING	Subarray requested	NONE	NONE
Pointing RA	115.512300	115.4210178826375	Alternating exposures requested	N	N
Pointing Dec	74.254160	74.26547977656865	Primary exposure time	0.000000	3.1
Pointing Roll	124.457590	124.7020762130097			
SIM focus pos (mm)	-0.684267	-0.6828225247311905			
SIM defocus (mm)	0	0.001444936568705701			
SIM translation stage pos (mm)	-190.132523	-190.1400660498719			
SIM translation stage offset (mm)	0	0.00754346686406393			
Observation start time	186600893.184000	186599748.74309			
Observation start date	2003-11-30T17:33:49	2003-11-30T17:15:48			
Observation end time	186646880.184000	186647194.45764			
Observation end date	2003-12-01T06:20:16	2003-12-01T06:26:34			
Read mode	TIMED	TIMED			

2.3 Aspect



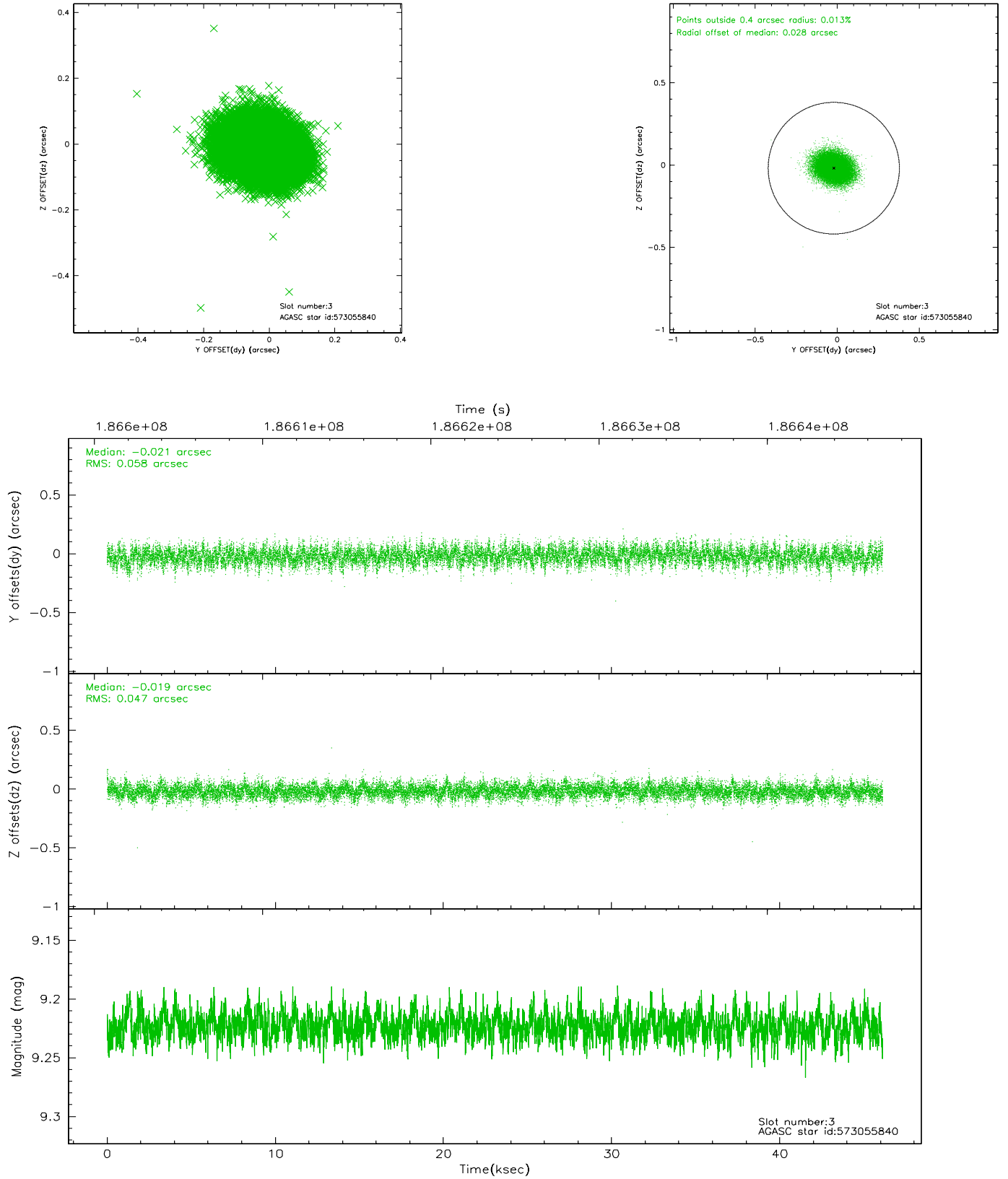


Slot Statistics

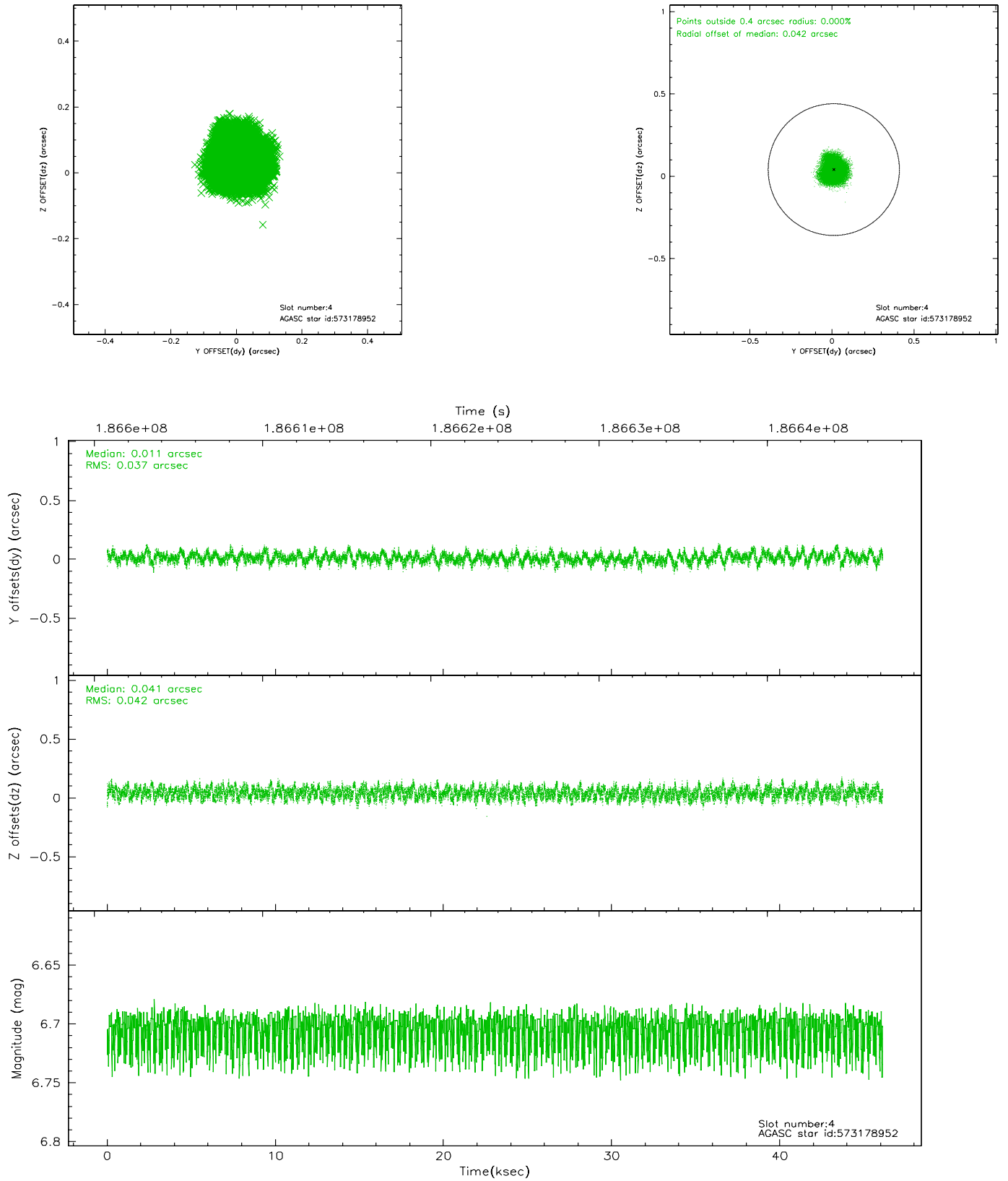
slot	status	id	mag	n_pts	med_dy	med_dz	dr1	dr2	ra	dec	mean_y	mean_z
0	FID	ACIS-S-2	7.10	11251	-0.034	-0.005	0.013	0.029	0.000000	0.000000	-759.28	-1730.56
1	FID	ACIS-S-4	7.20	11251	0.017	0.026	0.011	0.016	0.000000	0.000000	2154.04	177.97
2	FID	ACIS-S-6	7.35	11251	-0.014	-0.015	0.014	0.020	0.000000	0.000000	402.70	815.31
3	GUIDE	573055840	9.22	22494	-0.021	-0.019	0.079	0.129	113.597023	74.523847	1865.81	951.09
4	GUIDE	573178952	6.70	22502	0.011	0.041	0.062	0.094	117.150959	74.043209	-1525.15	-919.86
5	GUIDE	573179776	9.12	22496	0.058	0.094	0.082	0.132	115.887555	74.372574	146.59	-541.68
6	GUIDE	573180248	7.76	22501	0.103	-0.190	0.060	0.097	114.639898	73.595816	-1447.11	2068.68
7	GUIDE	573186336	10.73	22470	-0.153	0.072	0.182	0.293	115.333323	74.866487	1913.09	-1108.16

2.4 Star Slots

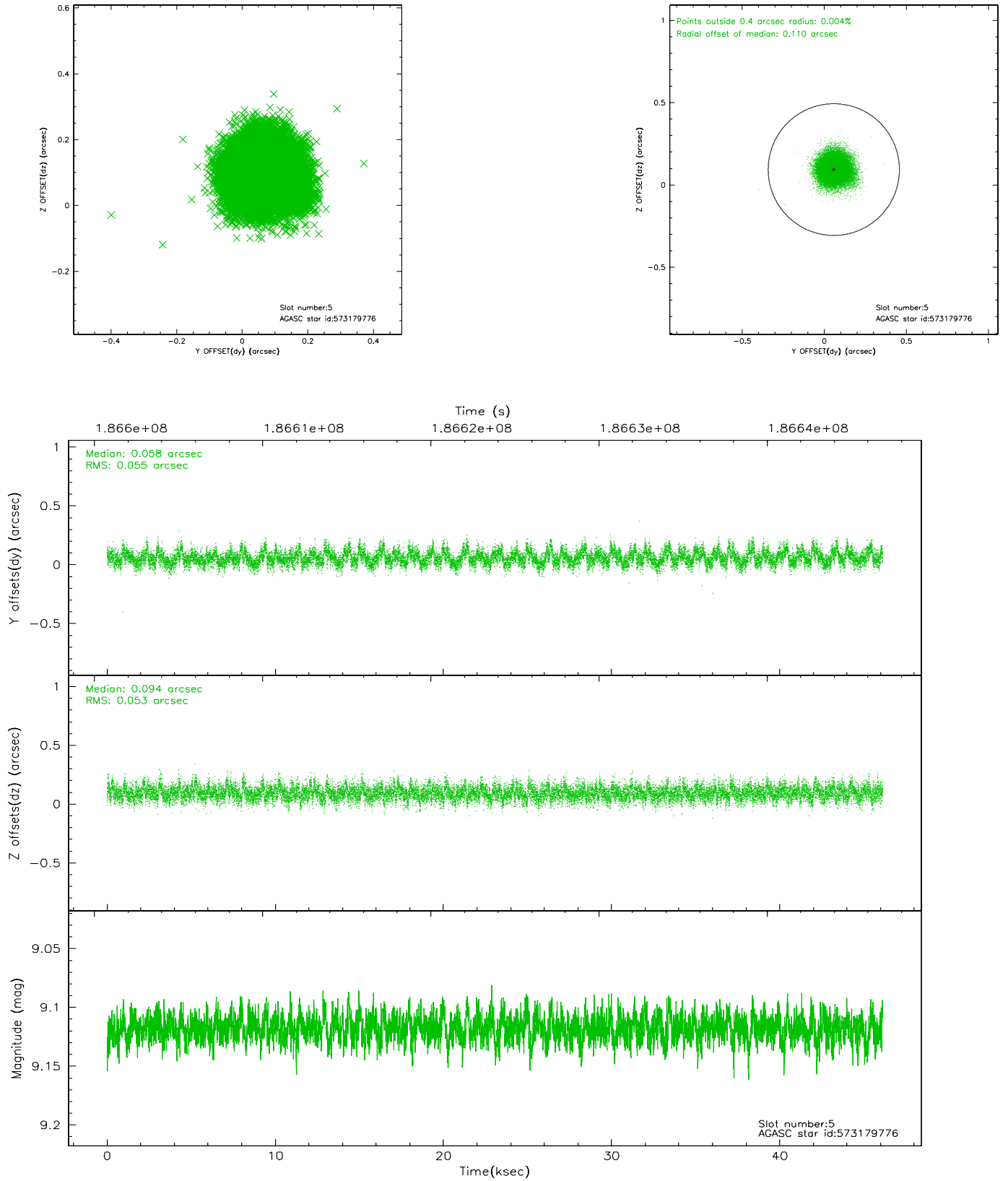
2.4.1 Slot 3



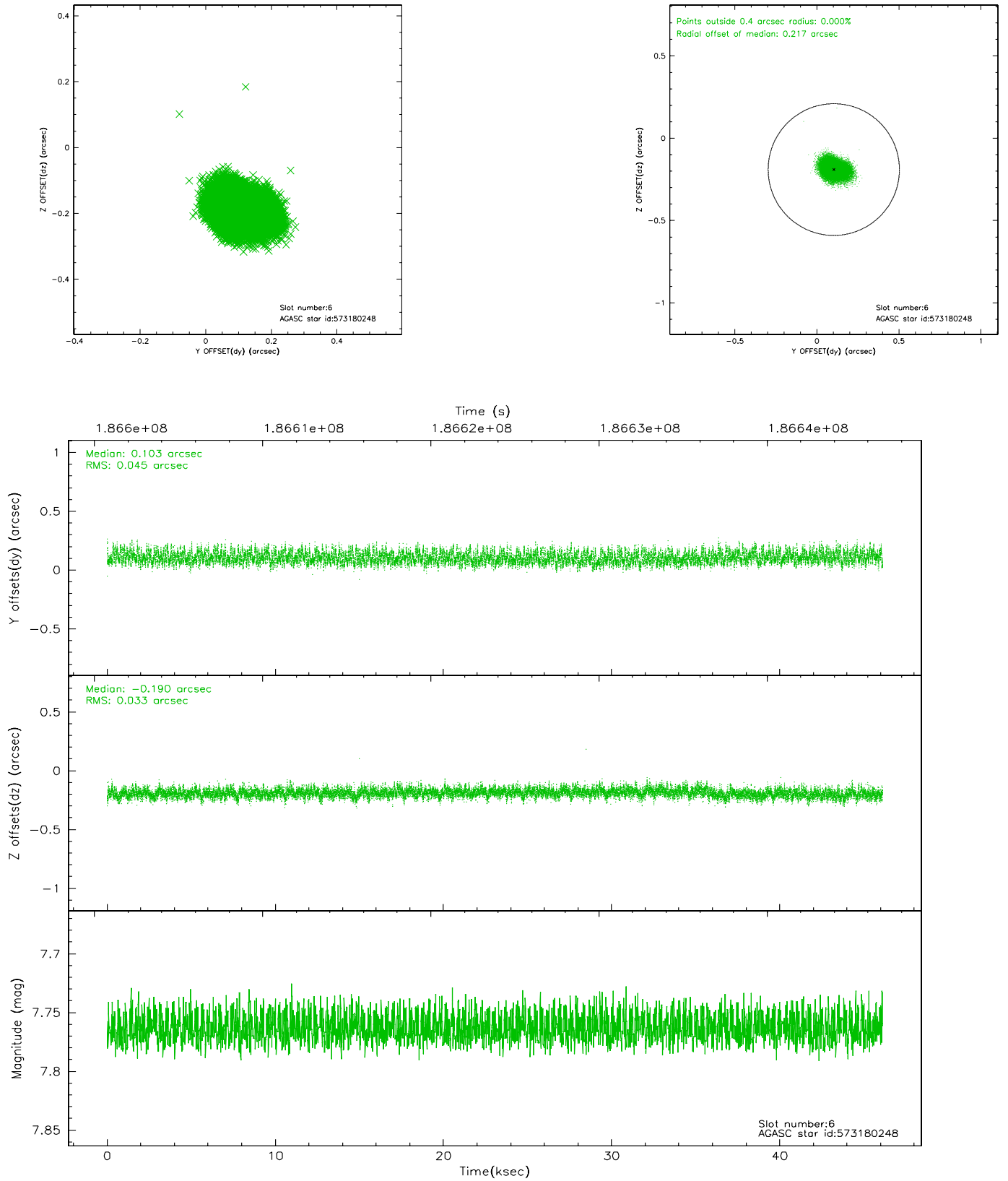
2.4.2 Slot 4



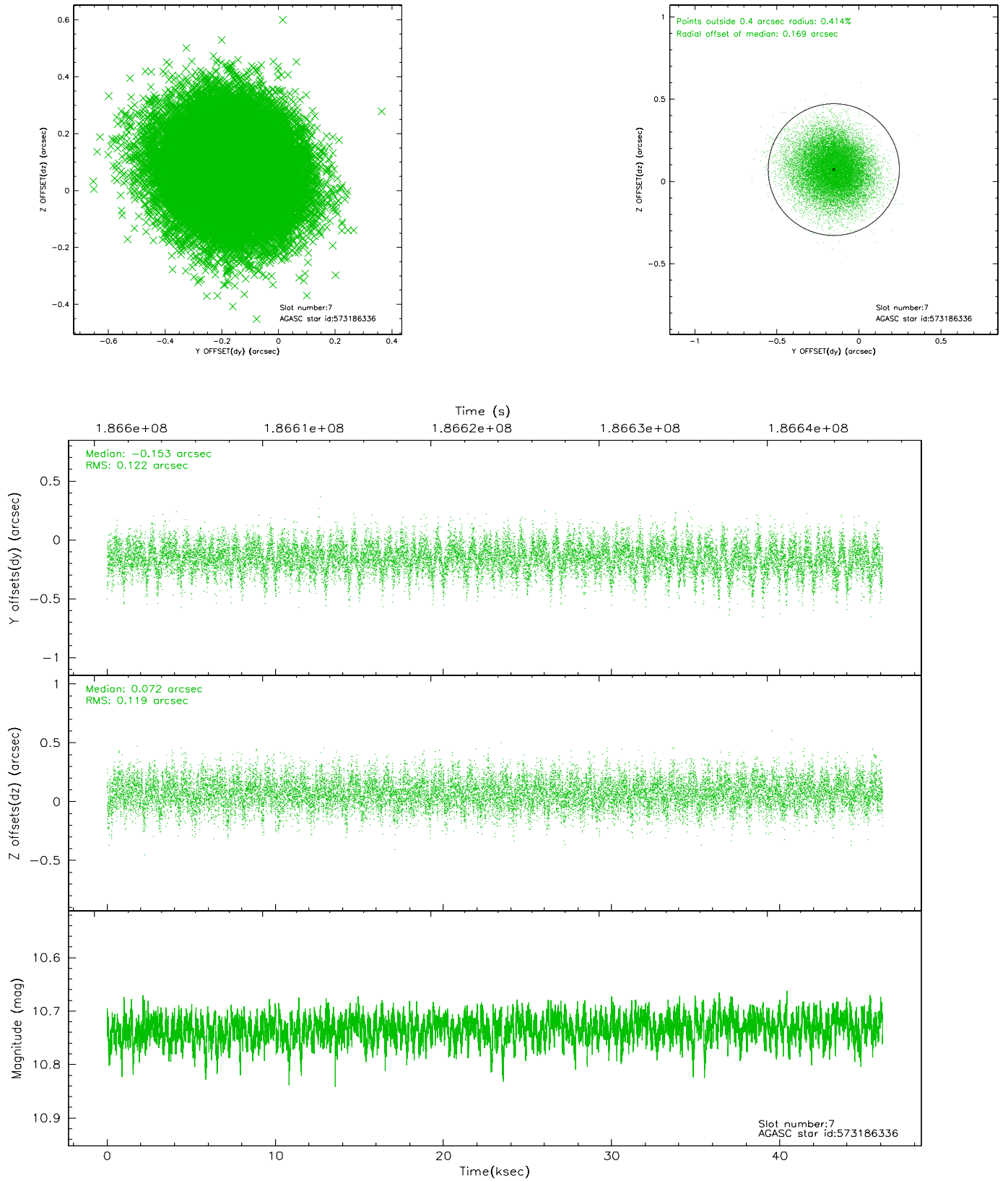
2.4.3 Slot 5



2.4.4 Slot 6

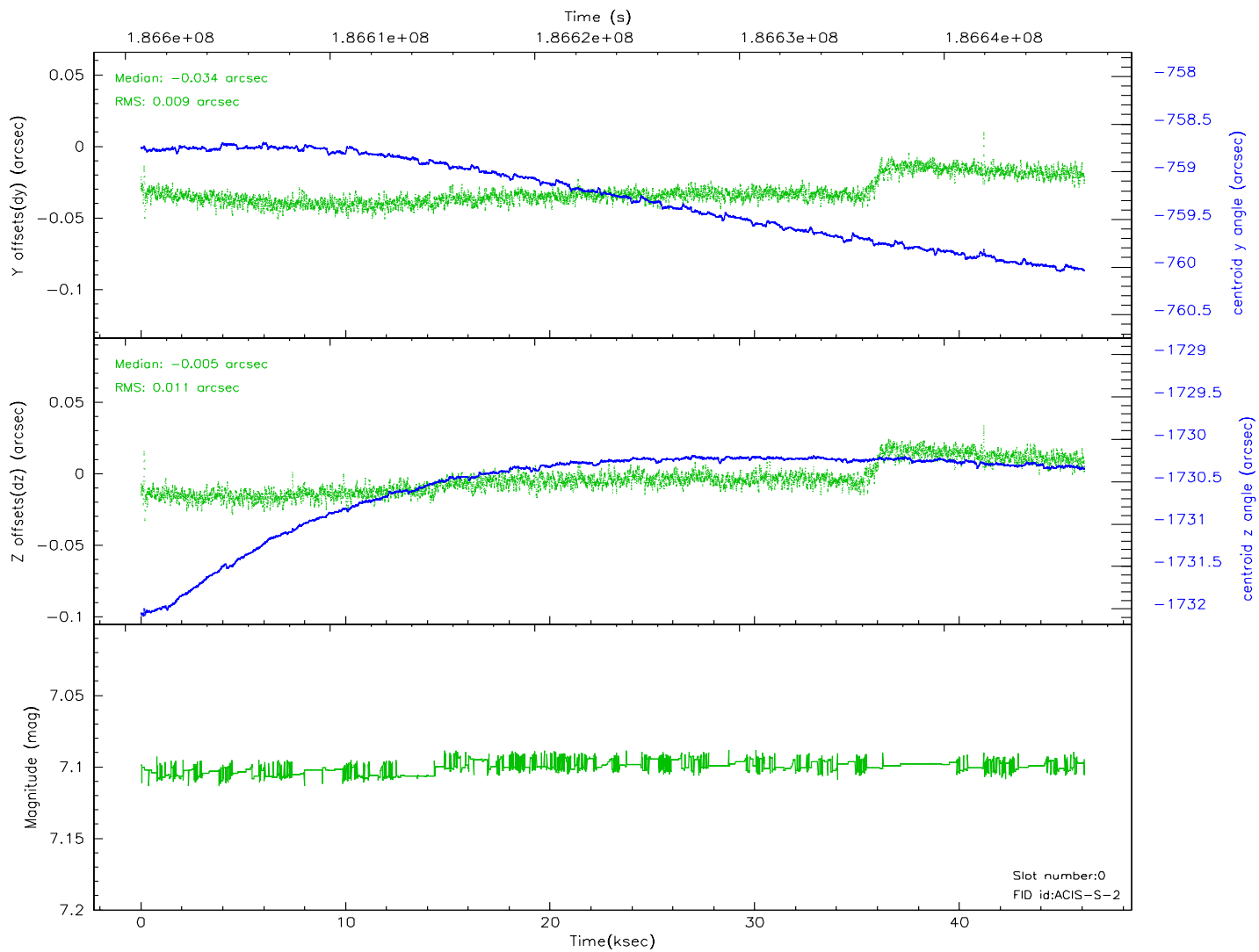
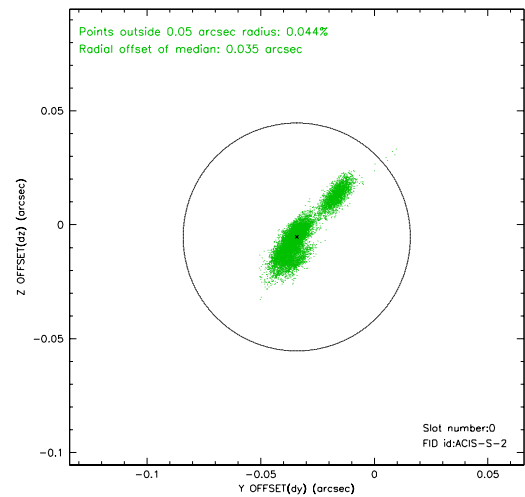
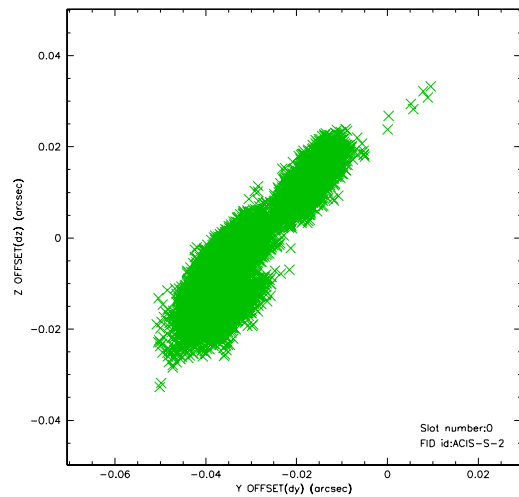


2.4.5 Slot 7

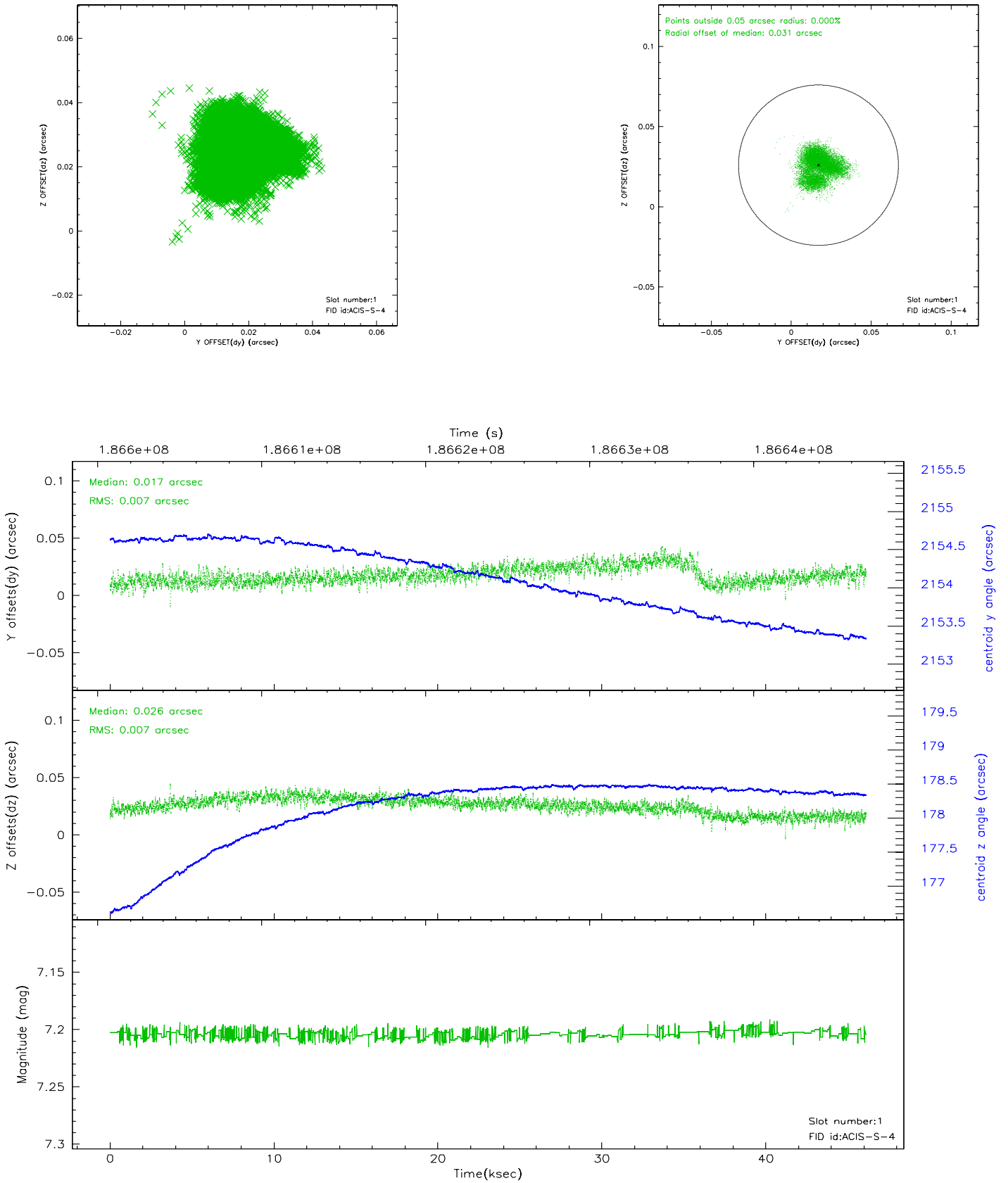


2.5 FID Slots

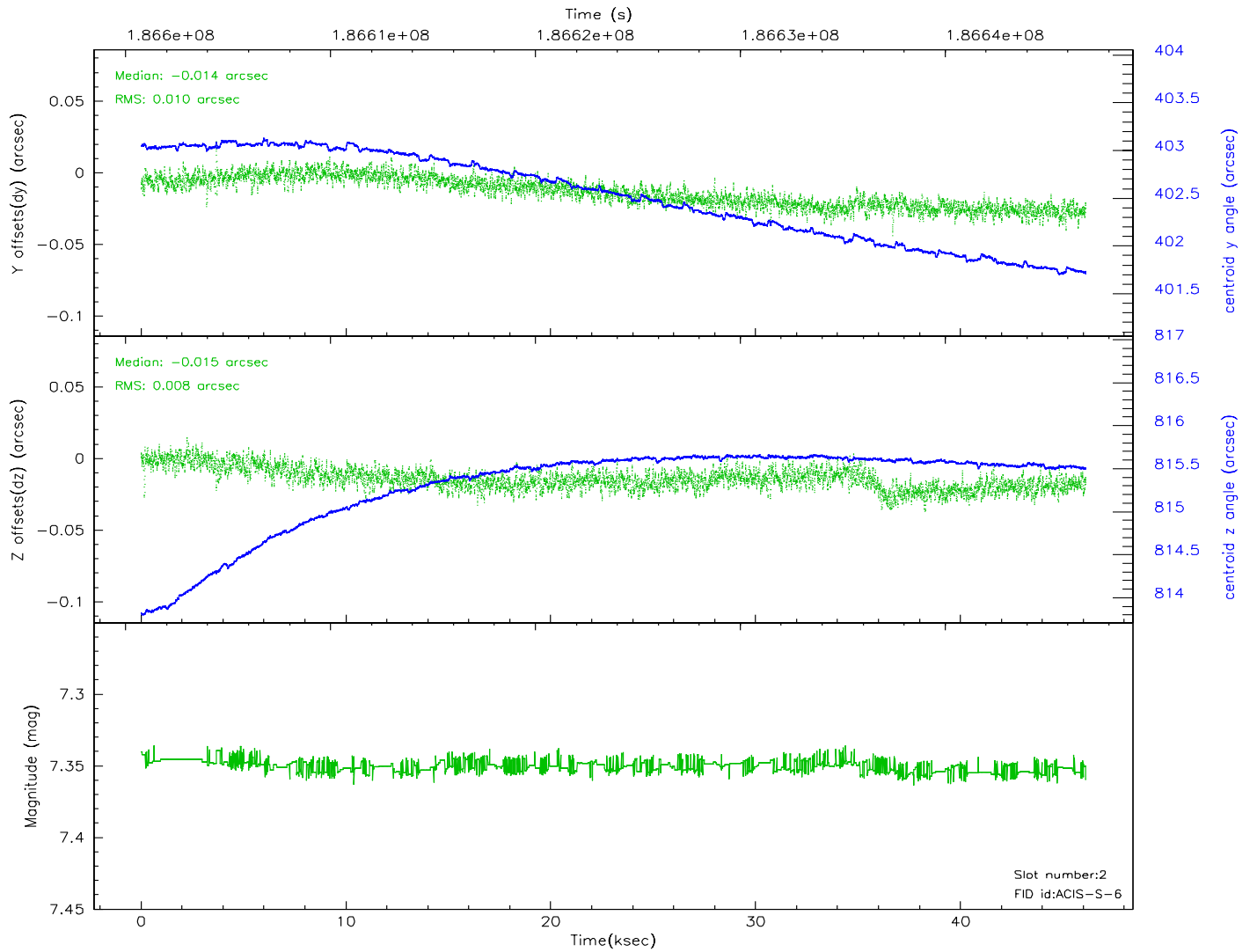
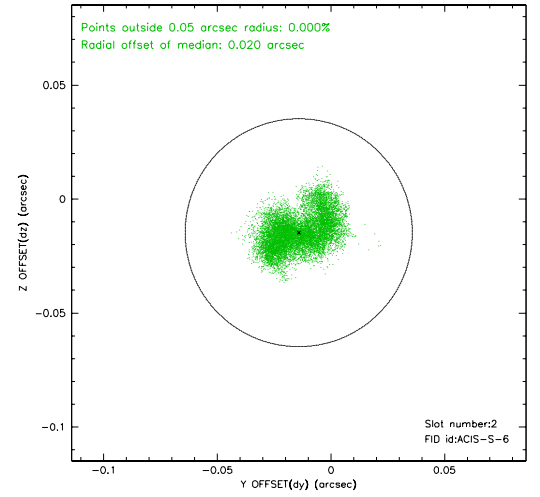
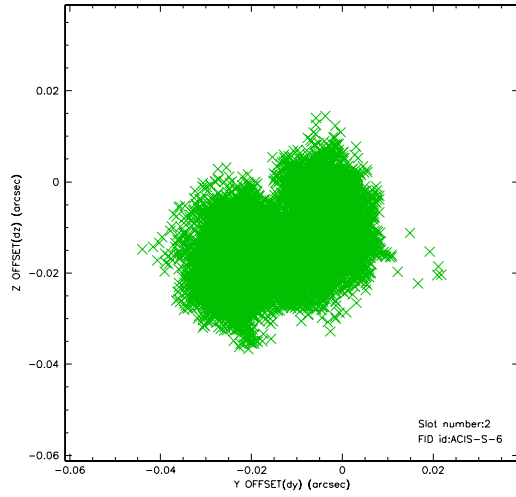
2.5.1 Slot 0



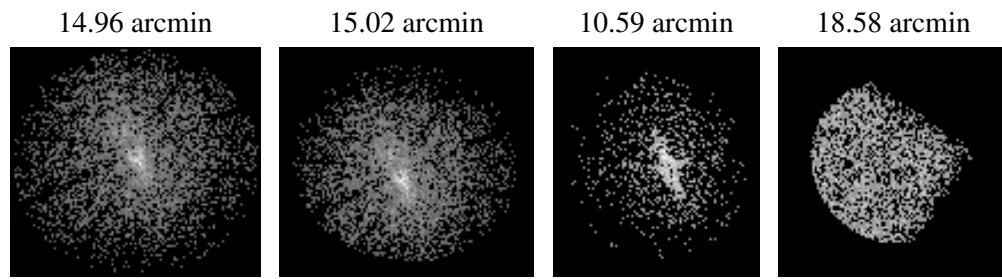
2.5.2 Slot 1



2.5.3 Slot 2



3 Point Sources



A Summary

A.1 Status

V&V Scientist	Jen Lauer
V&V Date (YYYY-MM-DD)	2006.06.27
V&V Edition	1
V&V Disposition and Status	OK
V&V Charge Time	46.118

A.2 Comments