

V&V Reference Report

L2 ASCDS Version : 7.6.8

Observation 4176 - L2 Version 001
Chandra X-Ray Center

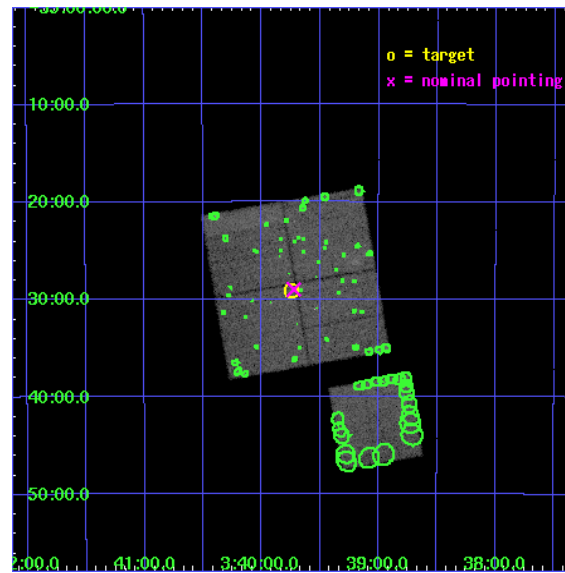
L2 Processing Date : Aug 3 2006

Contents

1	Front	2
2	OBI	3
2.1	OBI	3
2.1.1	Images	3
2.1.2	Bias	3
2.1.3	Parameters	4
2.1.4	Events	4
2.2	Compared Parameters	5
2.3	Aspect	6
2.4	Star Slots	9
2.4.1	Slot 3	9
2.4.2	Slot 4	10
2.4.3	Slot 5	11
2.4.4	Slot 6	12
2.4.5	Slot 7	13
2.5	FID Slots	14
2.5.1	Slot 0	14
2.5.2	Slot 1	15
2.5.3	Slot 2	16
3	Point Sources	17
A	Summary	18
A.1	Status	18
A.2	Comments	18

1 Front

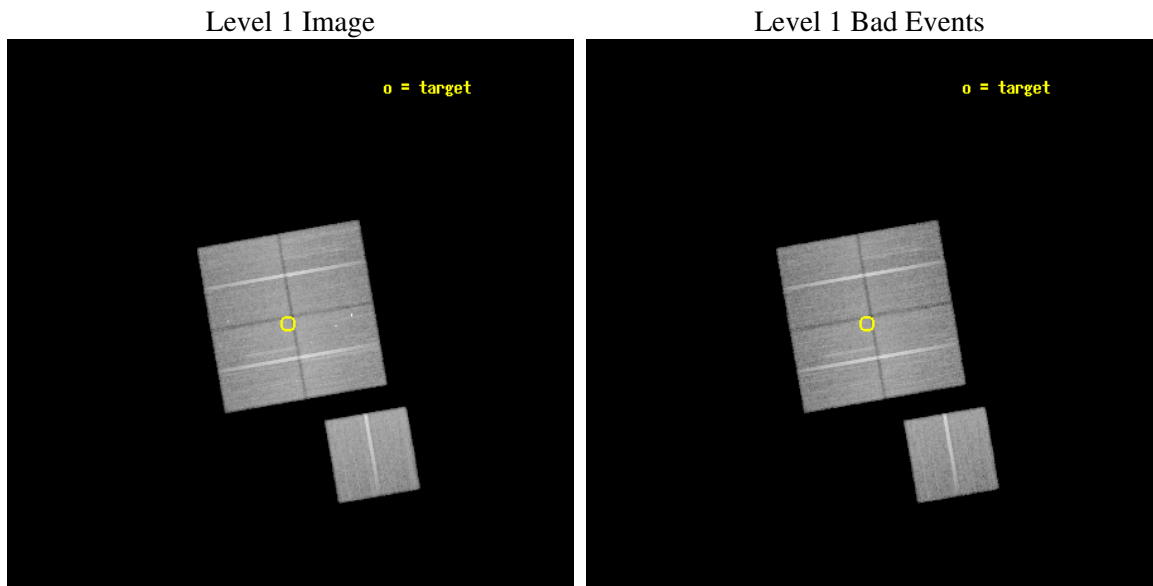
seq_num	800332
obs_id	4176
title	SURVEYING THE FORNAX CLUSTER OF GALAXIES
observer	Dr Caleb Scharf
object	FORNAX CLUSTER
dtcycle	0
cycle	P
ra_targ	54.93585
dec_targ	-35.48581
ra_nom	54.93109272545
dec_nom	-35.483301104108
roll_nom	170.20592332391
revision	2
ontime	46636.399910331
livetime	46027.061012284
ontime0	46623.836009532
ontime1	46636.399910331
ontime2	46626.976979703
ontime3	46636.399910331
ontime6	46633.258940101
l2events	156943



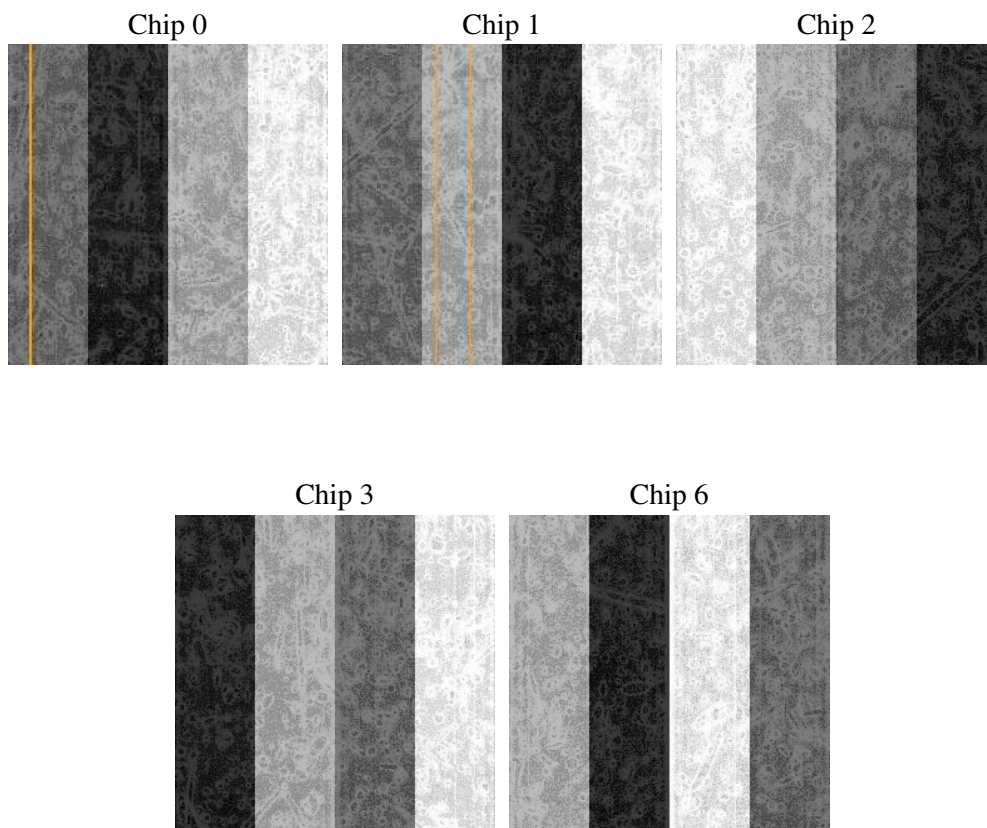
2 OBI

2.1 OBI

2.1.1 Images



2.1.2 Bias



2.1.3 Parameters

obi_num	1
ascdsver	7.6.8
caldbver	3.2.2
date	2006-08-03T07:41:37
revision	2

sched_exp_time	46500.000000
ontime	47011.372163564
ontime0	46998.808232844
ontime1	47011.372163564
ontime2	47001.949203014
ontime3	47011.372163564
ontime6	47008.231193334
l1events	1299833

2.1.4 Events

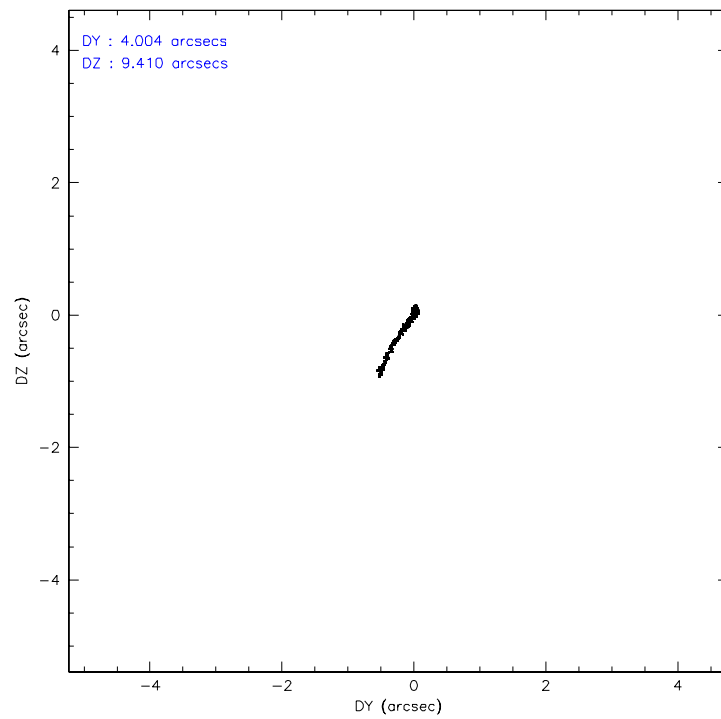
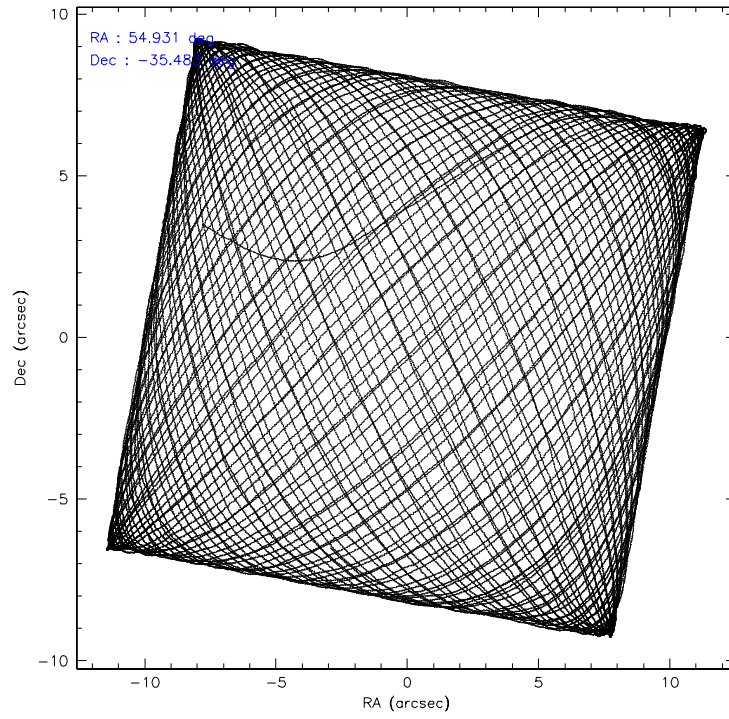
	ccd 0	ccd 1	ccd 2	ccd 3	ccd 6
level 1 events	245734	237834	287344	262969	265952
rejected events	203538	200192	242975	230341	230407
rejected %	82%	84%	84%	87%	86%

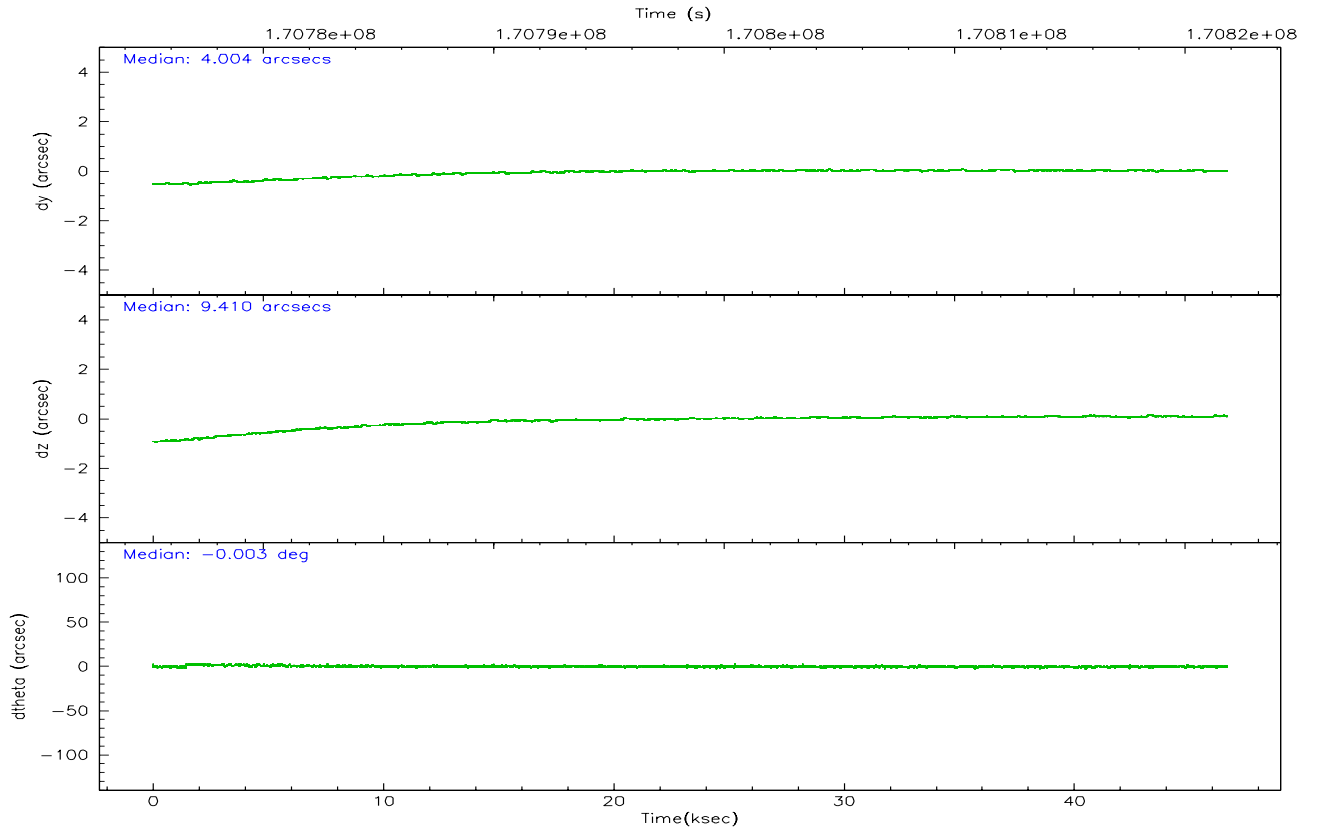
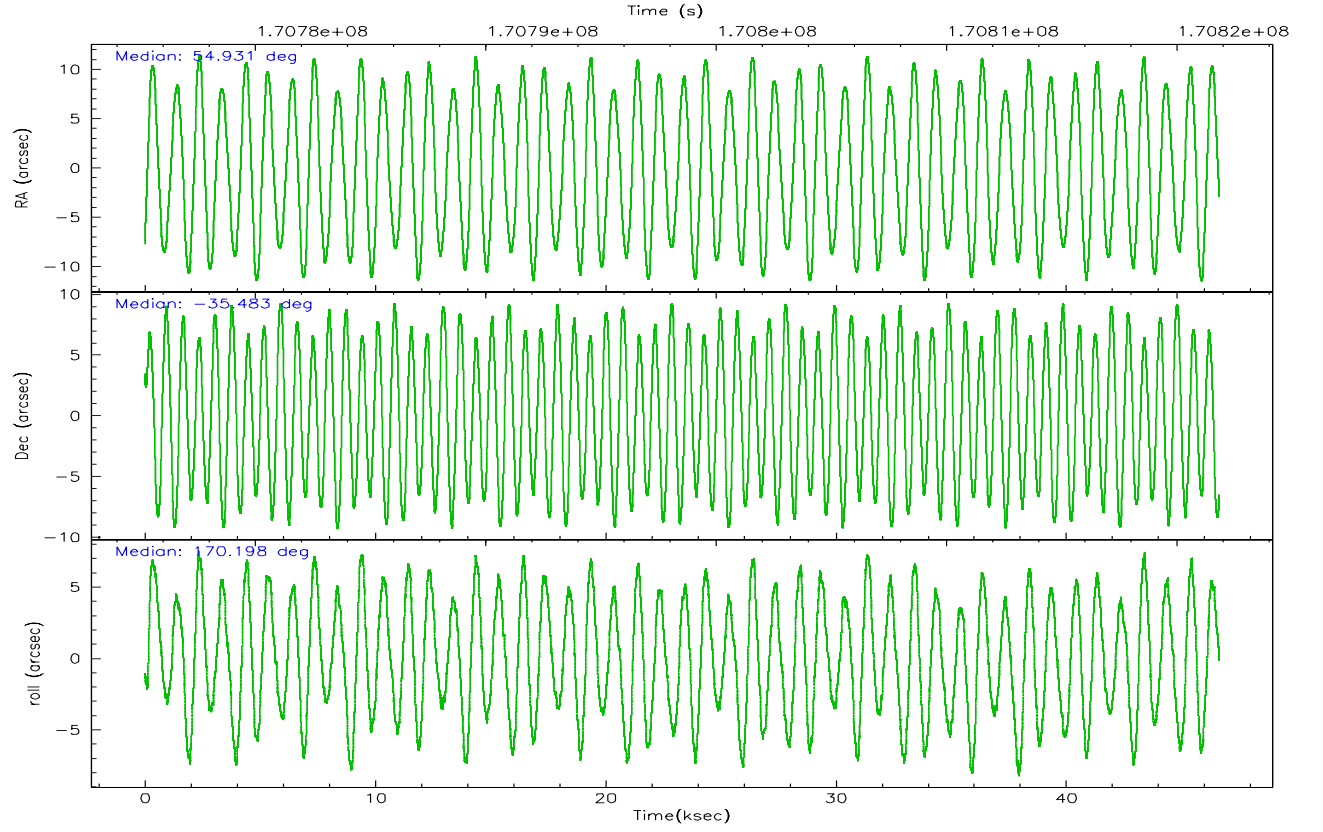
	ccd 0	ccd 1	ccd 2	ccd 3	ccd 6
grade 0 events	23469	18946	24763	17072	17450
	9%	7%	8%	6%	6%
grade 1 events	184	106	197	141	124
	0%	0%	0%	0%	0%
grade 2 events	8272	7062	8853	5687	7405
	3%	2%	3%	2%	2%
grade 3 events	3066	3108	2886	2761	2860
	1%	1%	1%	1%	1%
grade 4 events	2993	3127	3467	2755	2786
	1%	1%	1%	1%	1%
grade 5 events	7480	7960	7153	8215	8460
	3%	3%	2%	3%	3%
grade 6 events	4695	5673	4749	4605	5312
	1%	2%	1%	1%	1%
grade 7 events	195575	191852	235276	221733	221555
	79%	80%	81%	84%	83%

2.2 Compared Parameters

Parameter	Planned	Actual	Parameter	Planned	Actual
Instrument	ACIS	ACIS	Obspar format version number	6	6
Detector	ACIS-01236	ACIS-01236	Obspar file type	PREDICTED	ACTUAL
Grating	NONE	NONE	Obspar update status	NONE	UPDATED
Data mode	VFAINT	VFAINT	On-chip summing requested	N	N
Observation mode	POINTING	POINTING	Subarray requested	NONE	NONE
Pointing RA	54.962567	54.9310927254496	Alternating exposures requested	N	N
Pointing Dec	-35.473734	-35.48330110410826	Primary exposure time	0.000000	3.1
Pointing Roll	170.015506	170.2059233239129			
SIM focus pos (mm)	-0.782348	-0.7809083437167272			
SIM defocus (mm)	0	0.001439871863259334			
SIM translation stage pos (mm)	-233.592463	-233.5874344608287			
SIM translation stage offset (mm)	0	-0.005018542100998502			
Observation start time	170775334.184000	170774201.11513			
Observation start date	2003-05-31T13:34:30	2003-05-31T13:16:41			
Observation end time	170821834.184000	170821967.65466			
Observation end date	2003-06-01T02:29:30	2003-06-01T02:32:47			
Read mode	TIMED	TIMED			

2.3 Aspect



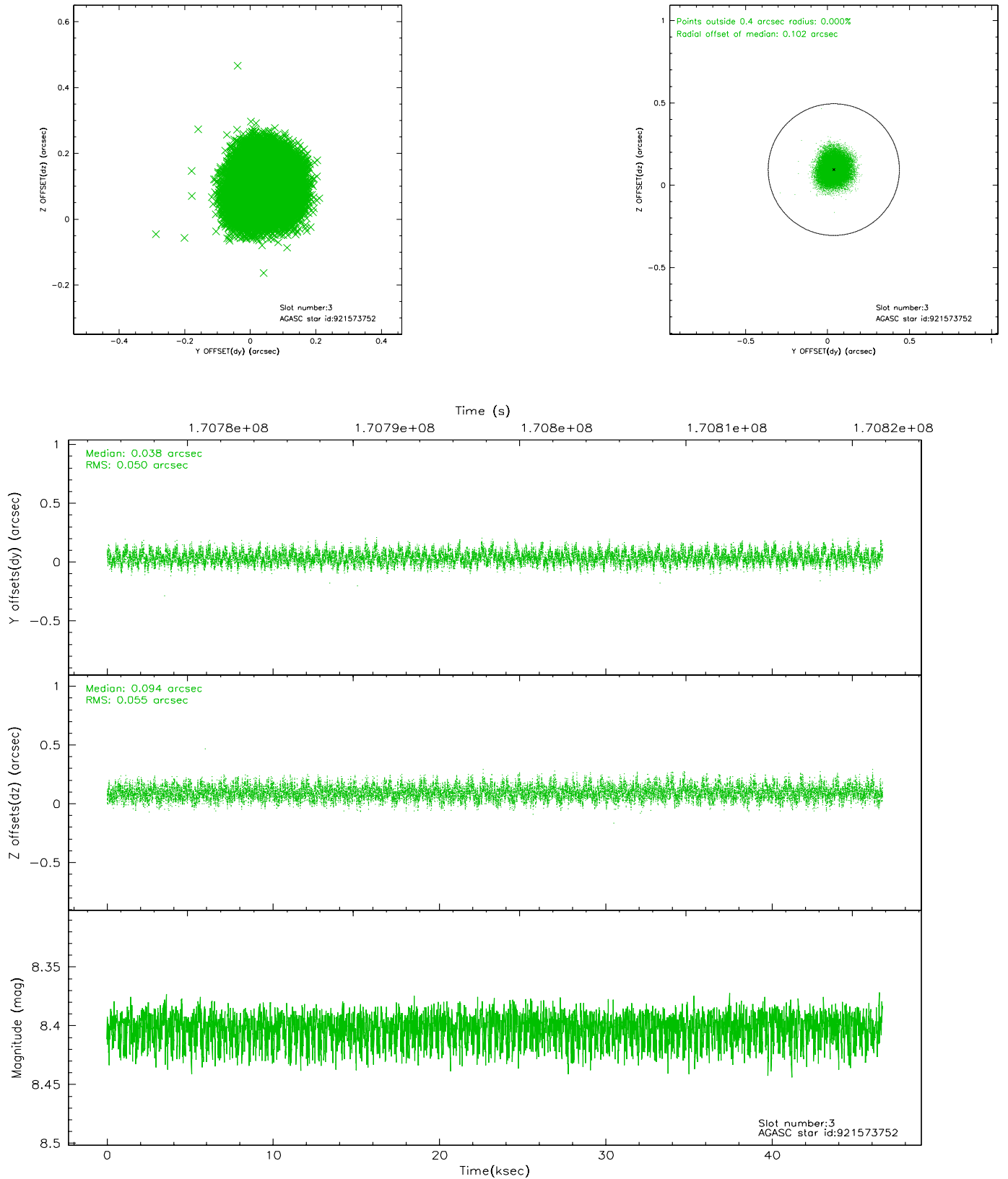


Slot Statistics

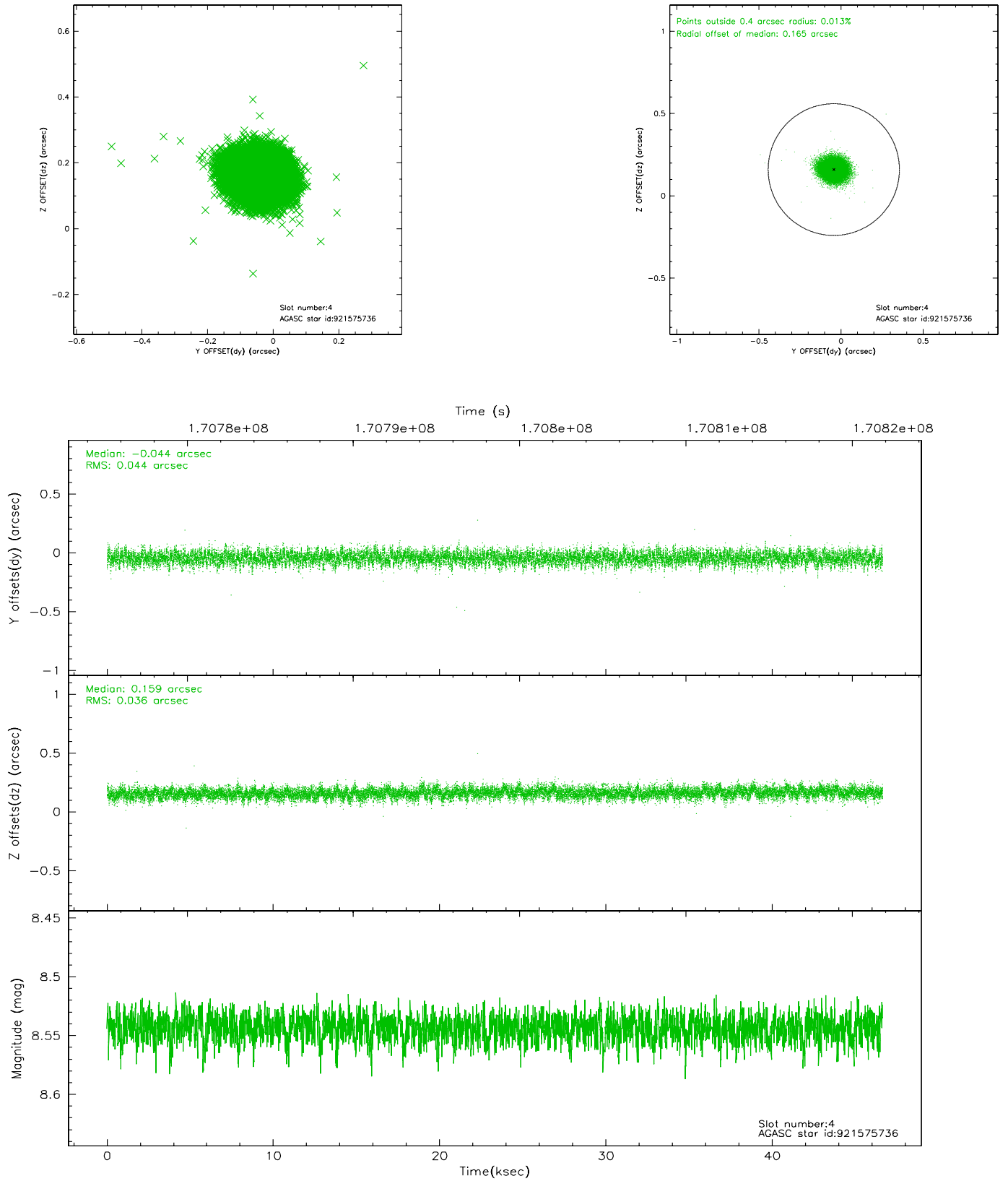
slot	status	id	mag	n_pts	med_dy	med_dz	dr1	dr2	ra	dec	mean_y	mean_z
0	FID	ACIS-I-2	7.14	11375	-0.035	-0.036	0.010	0.020	0.000000	0.000000	-758.35	-839.16
1	FID	ACIS-I-4	7.17	11375	0.042	0.038	0.007	0.013	0.000000	0.000000	2155.76	1067.12
2	FID	ACIS-I-5	7.23	11376	-0.108	0.066	0.010	0.017	0.000000	0.000000	-1812.28	1064.95
3	GUIDE	921573752	8.40	22750	0.038	0.094	0.081	0.126	55.297577	-34.906150	-619.48	-2182.03
4	GUIDE	921575736	8.54	22749	-0.044	0.159	0.060	0.097	54.586331	-34.827401	1498.64	-2096.33
5	GUIDE	921965624	8.63	22750	0.018	-0.083	0.074	0.117	54.900706	-35.940077	-113.37	1684.70
6	GUIDE	921966544	7.91	22753	0.030	-0.107	0.055	0.089	54.743508	-35.636012	530.16	687.52
7	GUIDE	921970112	9.58	22741	-0.037	-0.058	0.121	0.202	54.291262	-35.695592	1793.43	1133.88

2.4 Star Slots

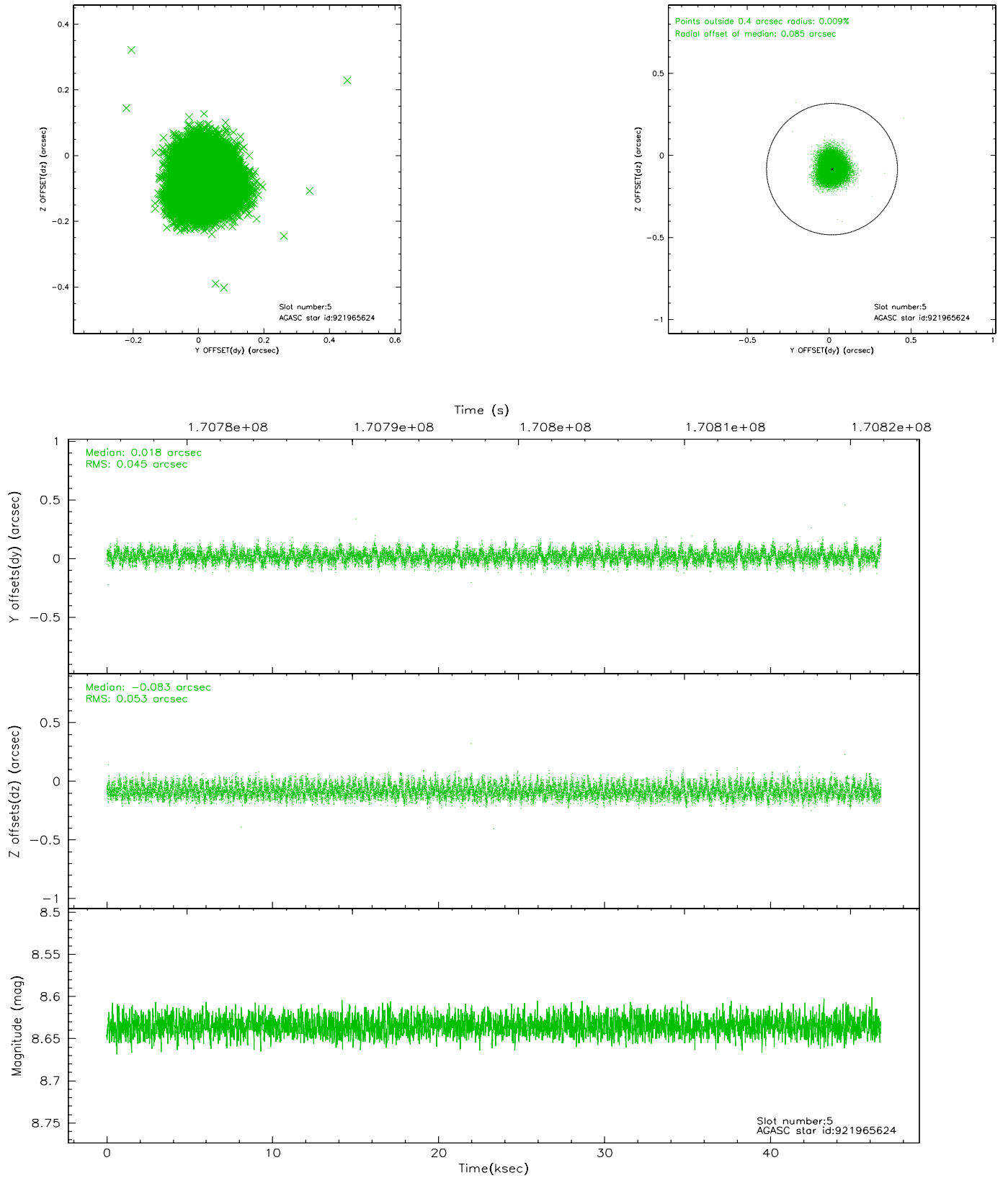
2.4.1 Slot 3



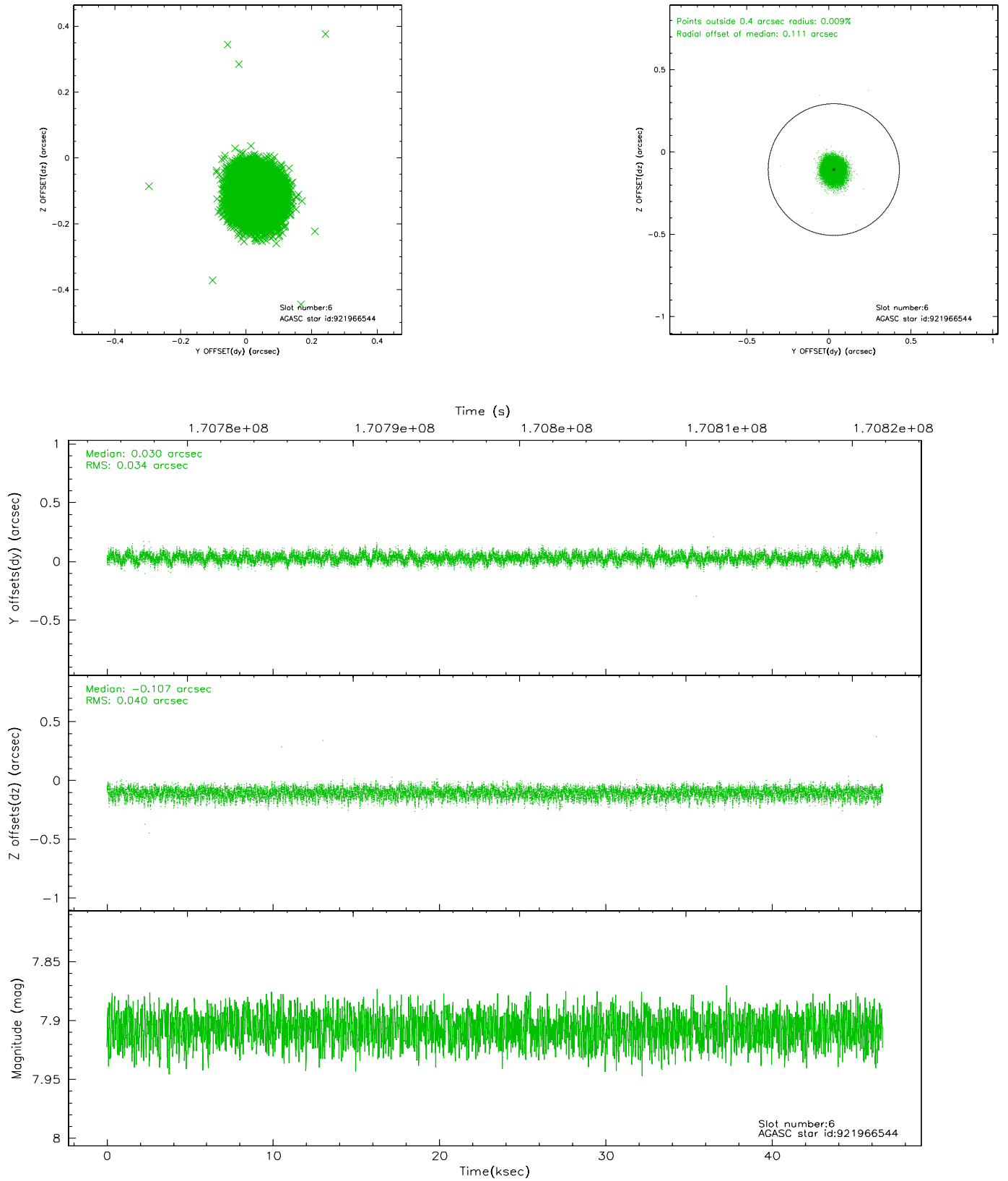
2.4.2 Slot 4



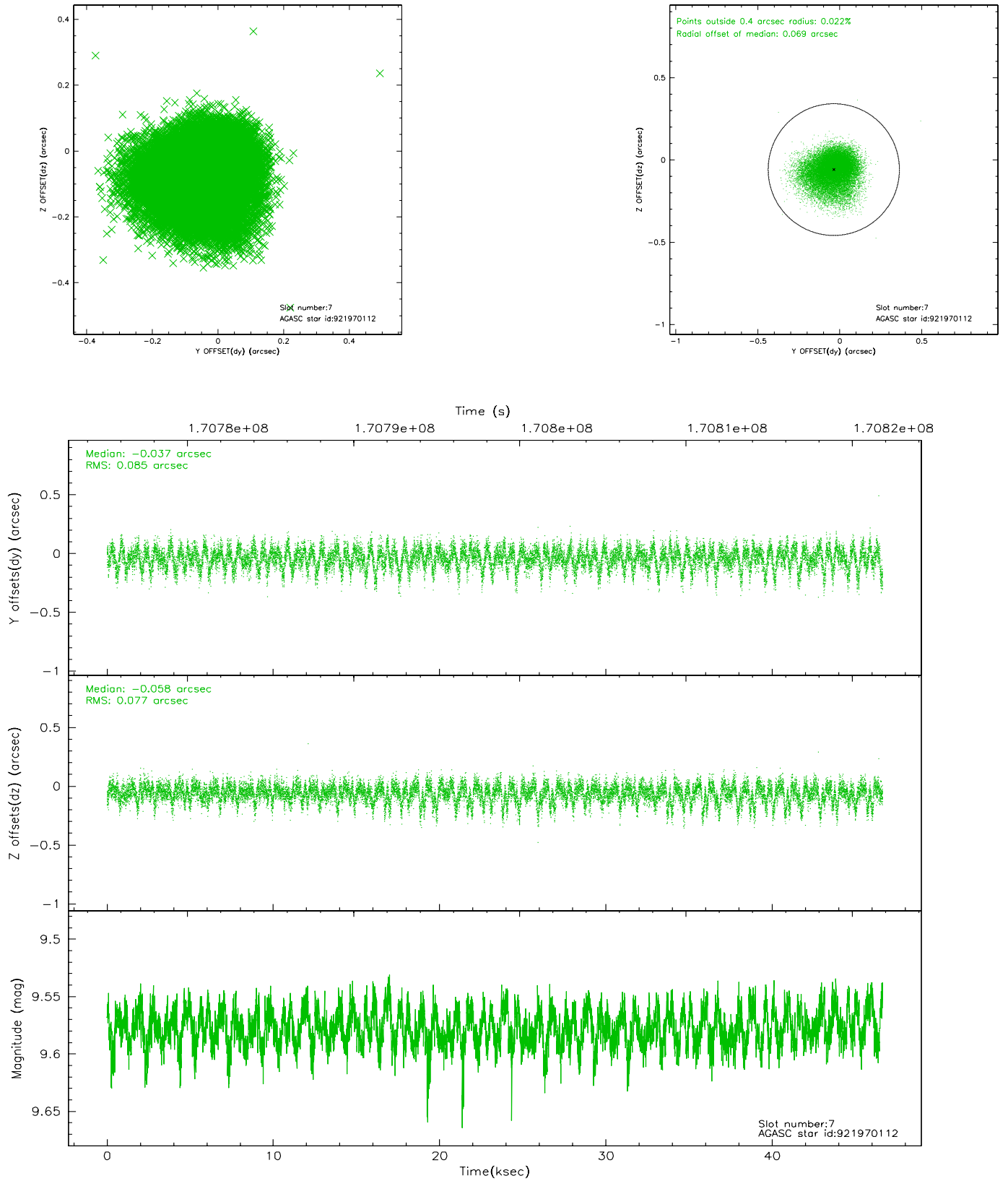
2.4.3 Slot 5



2.4.4 Slot 6

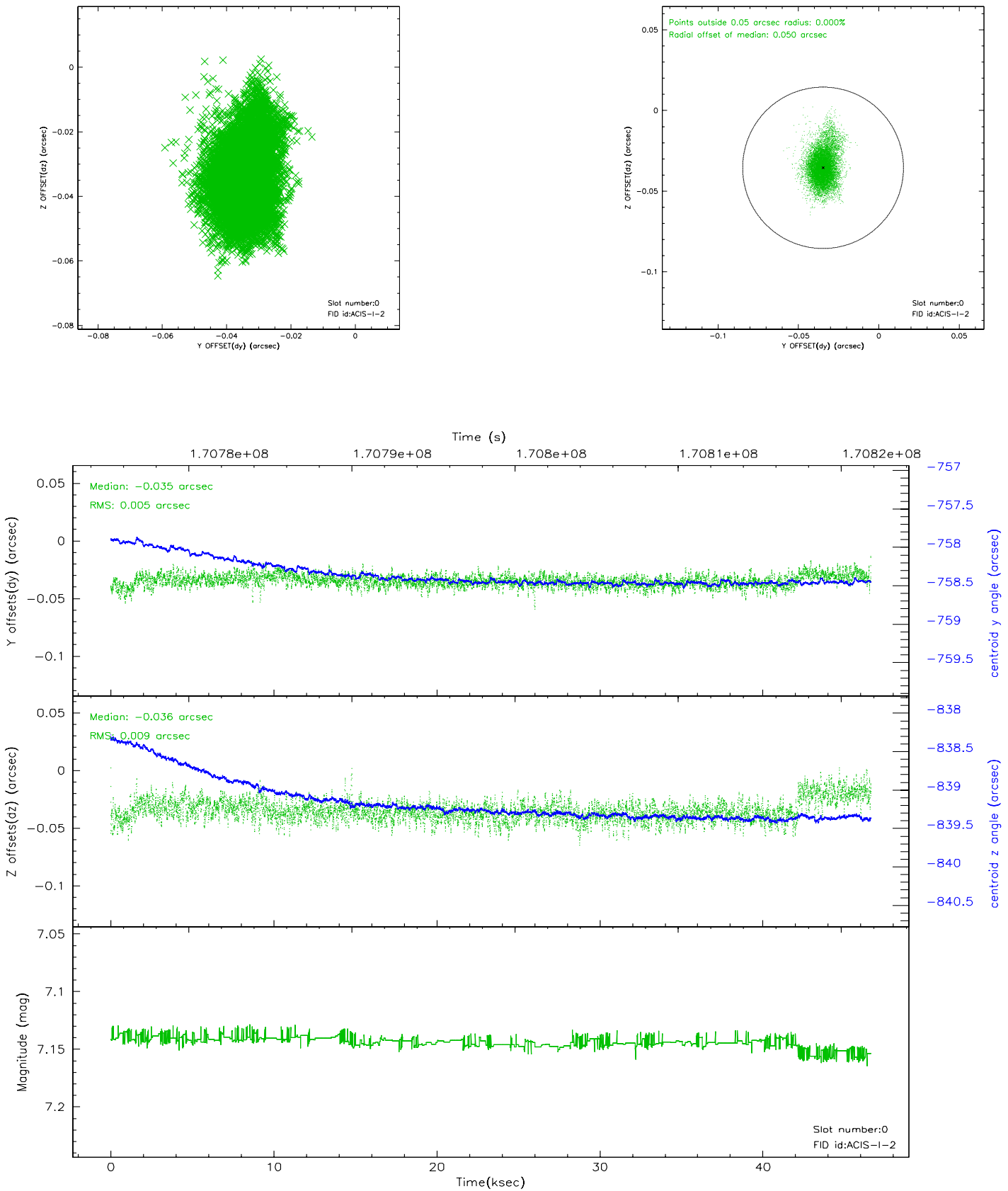


2.4.5 Slot 7

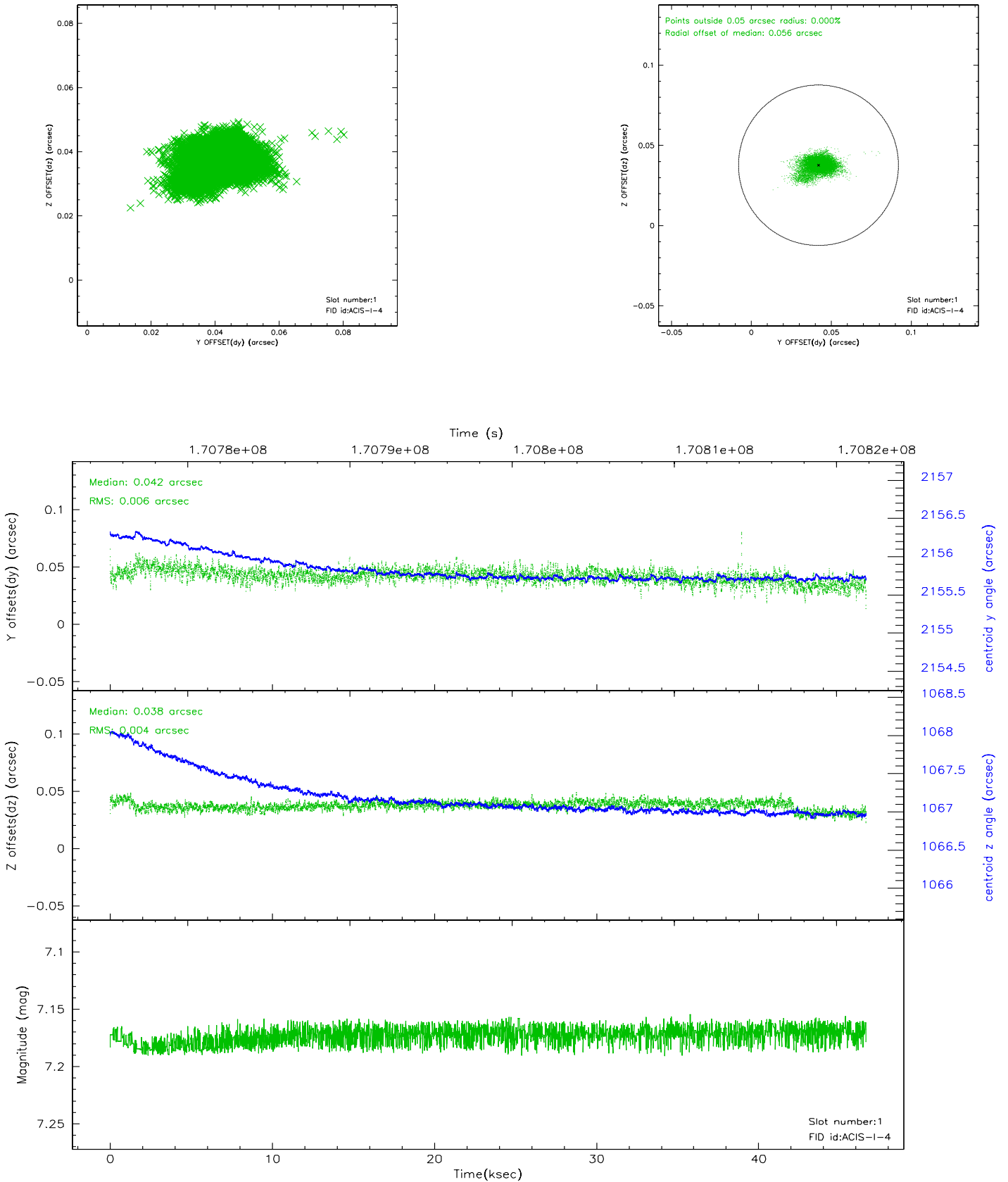


2.5 FID Slots

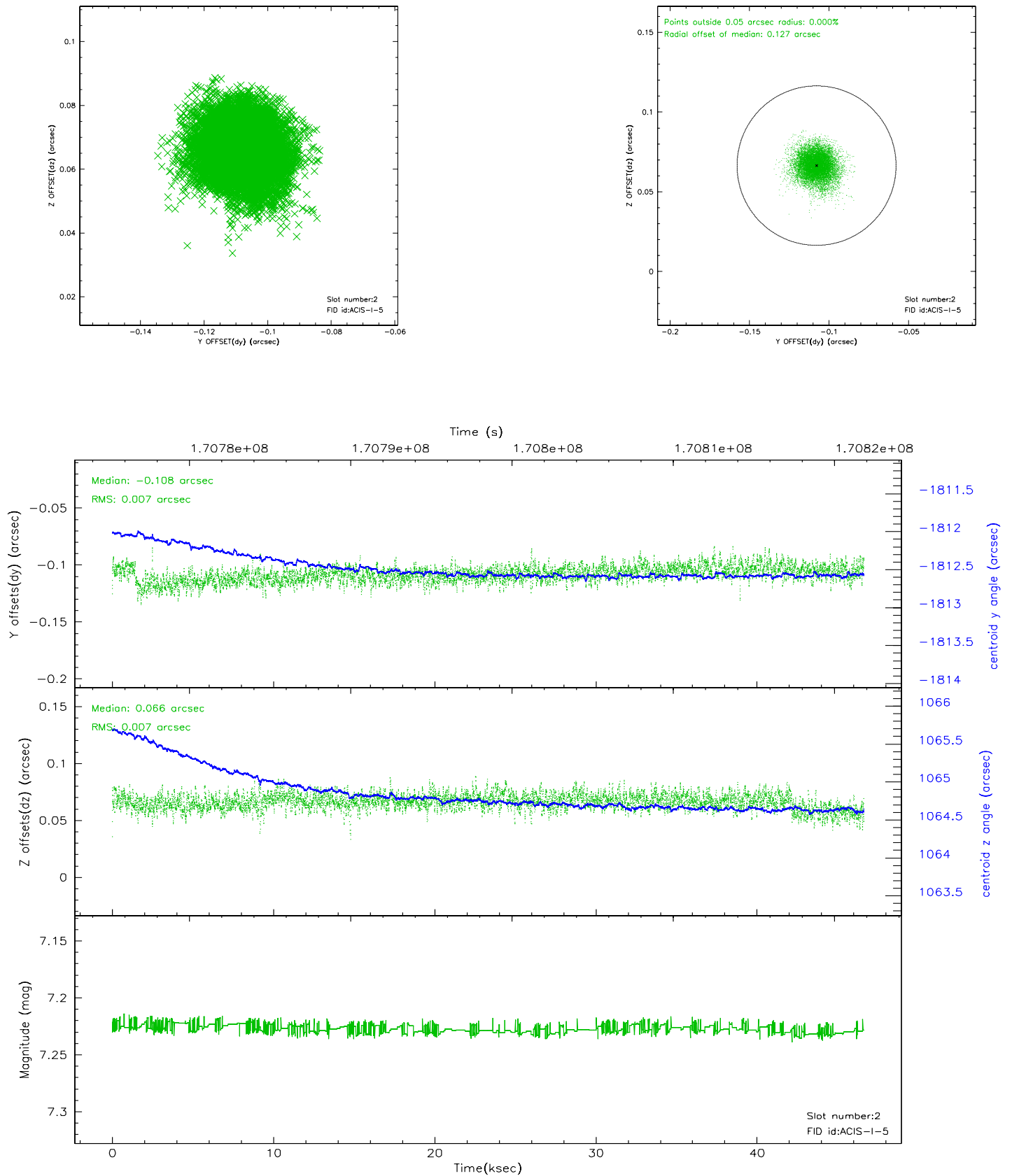
2.5.1 Slot 0



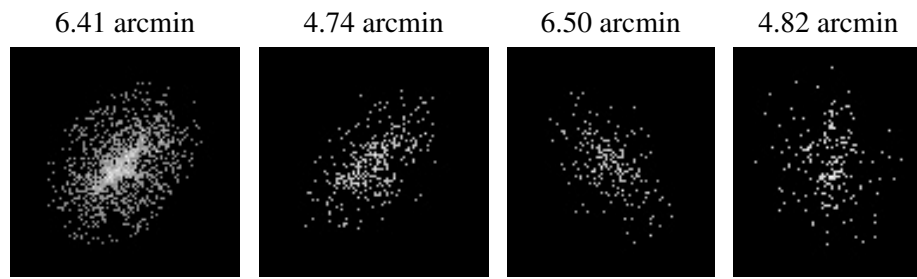
2.5.2 Slot 1



2.5.3 Slot 2



3 Point Sources



A Summary

A.1 Status

V&V Scientist	Beth Sundheim
V&V Date (YYYY-MM-DD)	2006.08.03
V&V Edition	1
V&V Disposition and Status	OK
V&V Charge Time	46.636

A.2 Comments