

V&V Reference Report

L2 ASCDS Version : 8.4.5

Observation 4167 - L2 Version 5
Chandra X-Ray Center

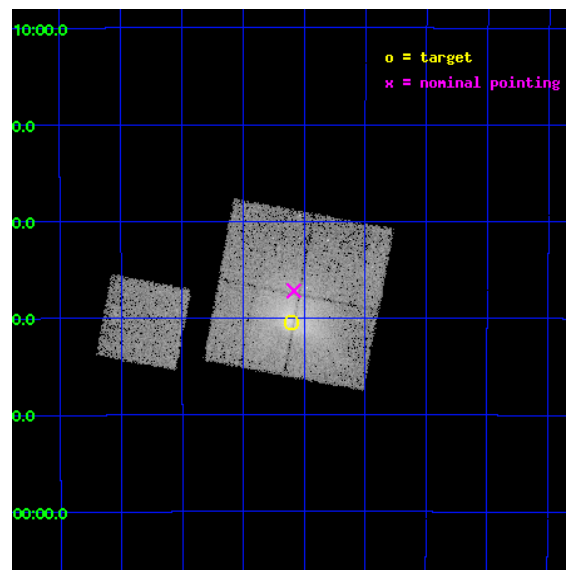
L2 Processing Date : Jan 7 2013

Contents

1	Front	2
2	OBI	3
2.1	OBI	3
2.1.1	Images	3
2.1.2	Bias	3
2.1.3	Parameters	4
2.1.4	Events	4
2.2	Compared Parameters	5
2.3	Aspect	6
2.4	Star Slots	9
2.4.1	Slot 3	9
2.4.2	Slot 5	10
2.4.3	Slot 6	11
2.4.4	Slot 7	12
2.5	FID Slots	13
2.5.1	Slot 0	13
2.5.2	Slot 1	14
2.5.3	Slot 2	15
A	Summary	16
A.1	Status	16
A.2	Comments	16

1 Front

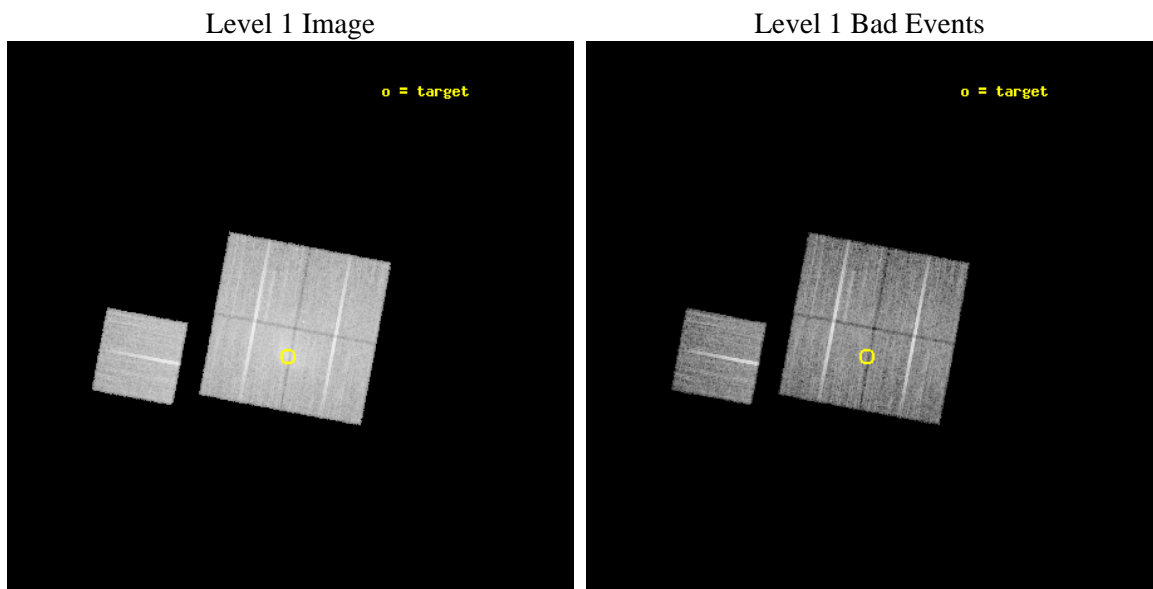
seq_num	800323	Sequence number
obs_id	4167	Observation id
title	SPATIALLY RESOLVED OBSERVATION OF A MAJOR MERGING EVENT IN THE SHAPLEY SUPERCLUSTER	Proposal title
observer	Dr. Stefano Ettori	Principal investigator
object	A3562	Source name
dtcycle	0	
cycle	P	events from which exps? Prim/Second/Both
ra_targ	203.4	Observer's specified target RA [deg]
dec_targ	-31.674167	Observer's specified target Dec [deg]
ra_nom	203.39601932971	Nominal RA [deg]
dec_nom	-31.619786710283	Nominal Dec [deg]
roll_nom	280.67738513088	Nominal Roll [deg]
revision	5	Processing version of data
ontime	19539.258982152	Sum of GTIs [s]
livetime	19283.964178957	Livetime [s]
ontime0	19542.399962395	Sum of GTIs [s]
ontime1	19536.117982	Sum of GTIs [s]
ontime2	19539.258982152	Sum of GTIs [s]
ontime3	19536.118011922	Sum of GTIs [s]
ontime6	19542.399962395	Sum of GTIs [s]
l2events	96018	Number of level 2 events



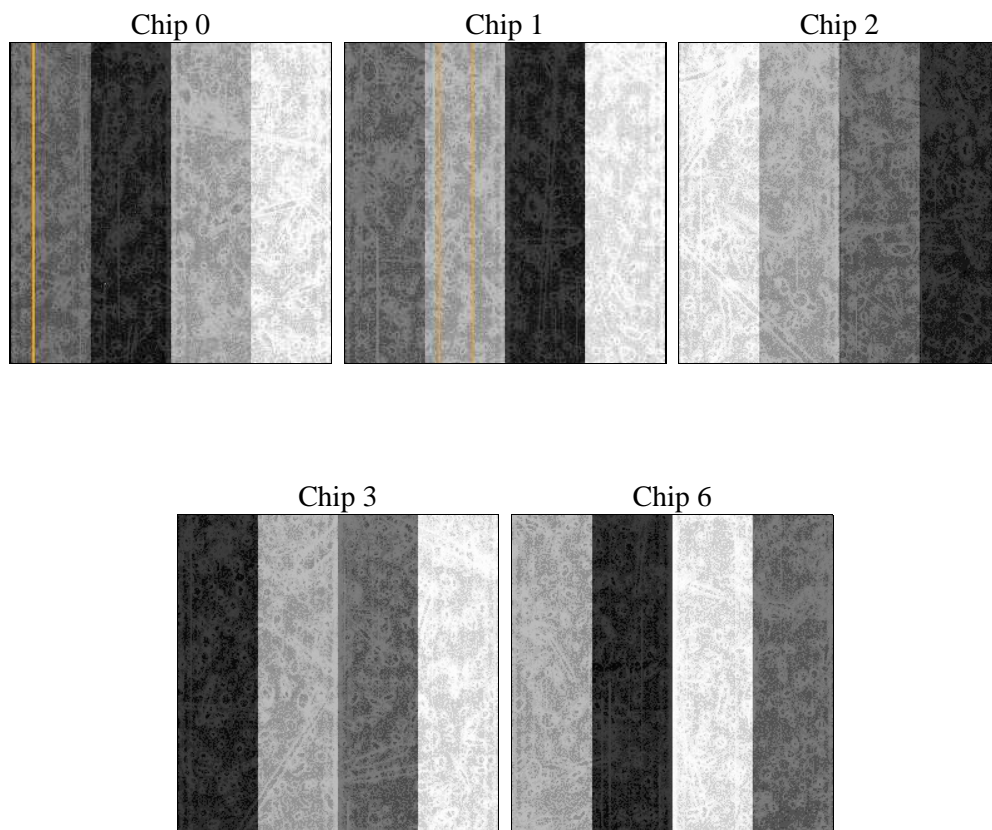
2 OBI

2.1 OBI

2.1.1 Images



2.1.2 Bias



2.1.3 Parameters

obi_num	0	Obi number	sched_exp_time	19424.000000	[s] Scheduled observation exposure time
ascdsver	8.5.1.1	Processing system revision	ontime	19539.258982152	Sum of GTIs [s]
caldsver	4.5.5	 	ontime0	19542.399962395	Sum of GTIs [s]
date	2013-01-07T23:59:54	Date and time of file creation	ontime1	19536.117982	Sum of GTIs [s]
revision	5	Processing version of data	ontime2	19539.258982152	Sum of GTIs [s]
			ontime3	19536.118011922	Sum of GTIs [s]
			ontime6	19542.399962395	Sum of GTIs [s]
			l1events	580194	Number of level 1 events

2.1.4 Events

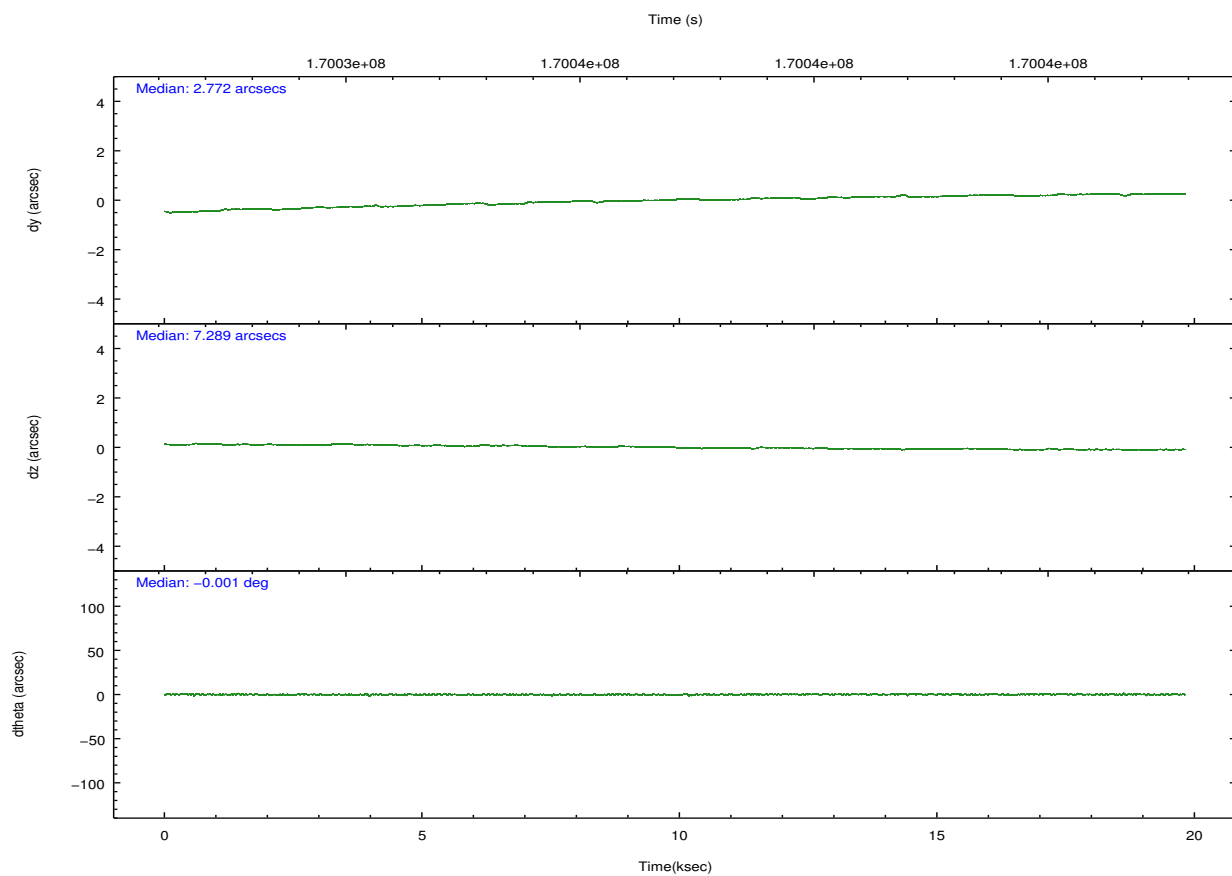
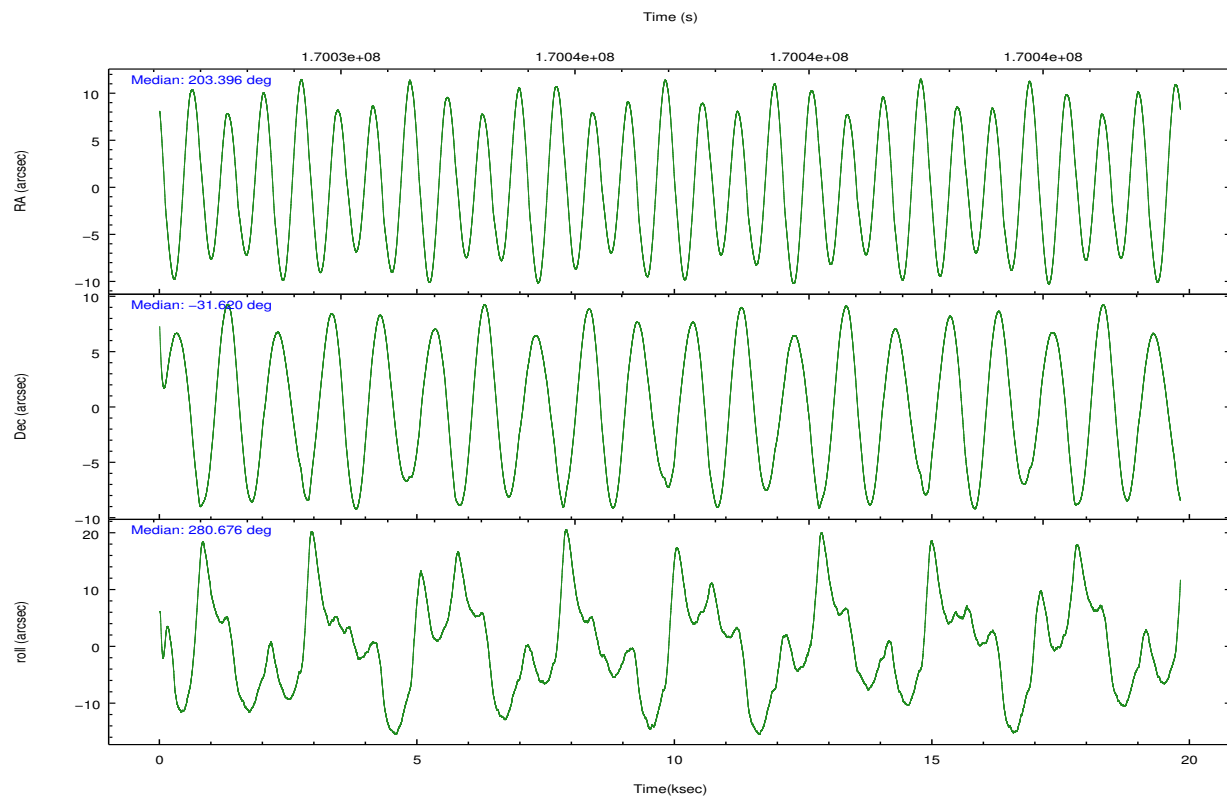
	ccd 0	ccd 1	ccd 2	ccd 3	ccd 6
level 1 events	122722	105742	133698	110914	107118
rejected events	92076	88579	101281	95297	93986
rejected %	75%	83%	75%	85%	87%

	ccd 0	ccd 1	ccd 2	ccd 3	ccd 6
grade 0 events	19962	8722	21949	8331	5913
	16%	8%	16%	7%	5%
grade 1 events	128	51	126	89	50
	0%	0%	0%	0%	0%
grade 2 events	4410	3000	4549	2628	2503
	3%	2%	3%	2%	2%
grade 3 events	1879	1548	1808	1229	1232
	1%	1%	1%	1%	1%
grade 4 events	1825	1436	1778	1301	1190
	1%	1%	1%	1%	1%
grade 5 events	3732	3840	3504	4043	3951
	3%	3%	2%	3%	3%
grade 6 events	2573	2459	2334	2136	2296
	2%	2%	1%	1%	2%
grade 7 events	88213	84686	97650	91157	89983
	71%	80%	73%	82%	84%

2.2 Compared Parameters

Parameter	Planned	Actual	Parameter	Planned	Actual
Instrument	ACIS	ACIS	Obspar format version number	7	7
Detector	ACIS-01236	ACIS-01236	Obspar file type	PREDICTED	ACTUAL
Grating	NONE	NONE	Obspar update status	NONE	UPDATED
Data mode	VFAINT	VFAINT	Number of optional ACIS chips dropped	0	0
Observation mode	POINTING	POINTING	On-chip summing requested	N	N
[deg] Pointing RA	203.374962	203.3960193297132	Subarray requested	NONE	NONE
[deg] Pointing Dec	-31.599127	-31.61978671028341	Alternating exposures requested	N	N
[deg] Pointing Roll	280.457663	280.6773851308818	[s] Primary exposure time	0.000000	3.1
[mm] SIM focus pos	-0.782348	-0.7809083437167272			
[mm] SIM defocus	0	0.001439871863259334			
[mm] SIM translation stage pos	-233.592463	-233.5874344608287			
[mm] SIM translation stage offset	0	-0.005018542100998502			
[s] Observation start time (MET)	170027523.184000	170026456.92092			
Observation start date	2003-05-22T21:50:59	2003-05-22T21:34:16			
[s] Observation end time (MET)	170046947.184000	170047551.93431			
Observation end date	2003-05-23T03:14:43	2003-05-23T03:25:51			
Read mode	TIMED	TIMED			

2.3 Aspect

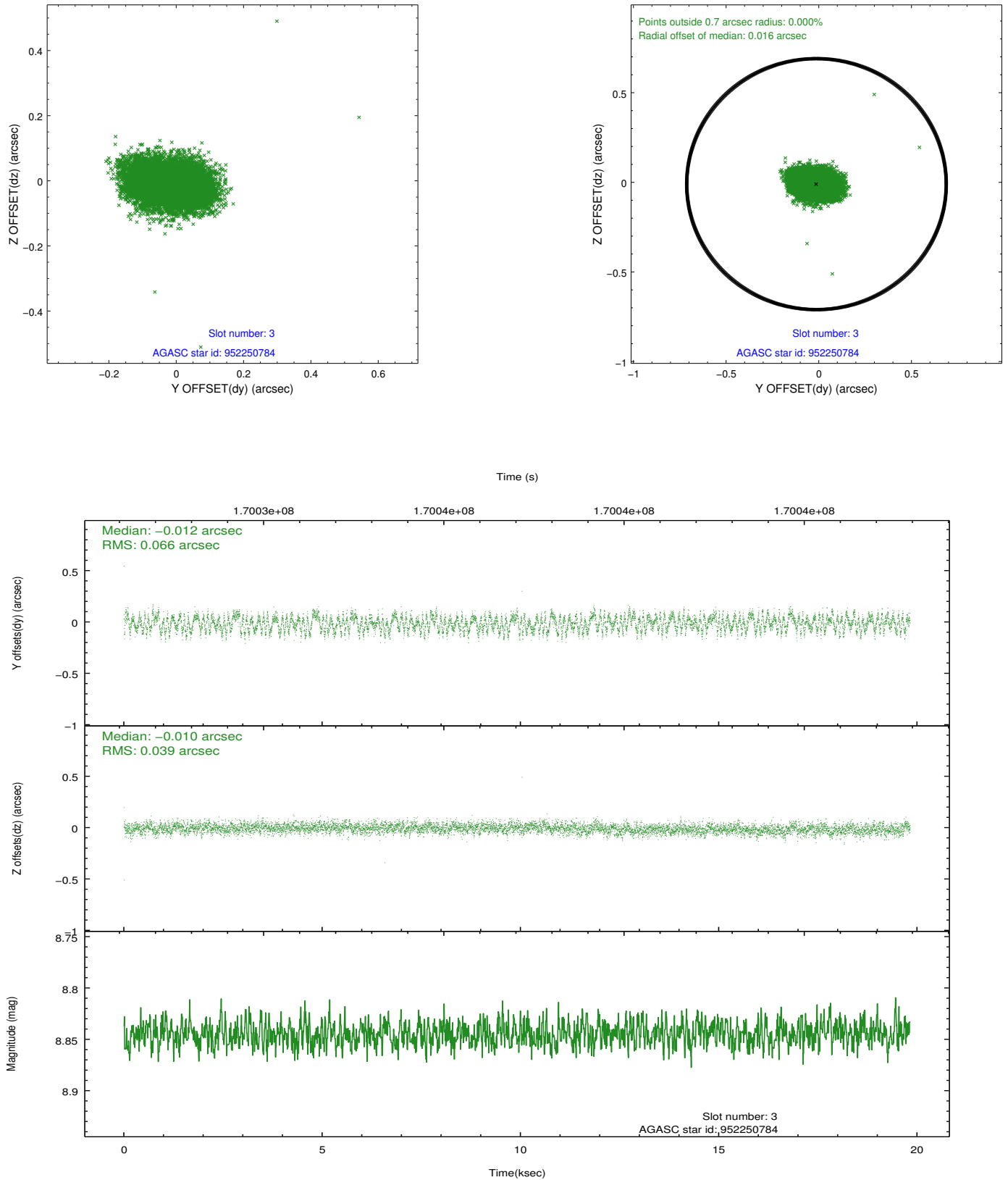


Slot Statistics

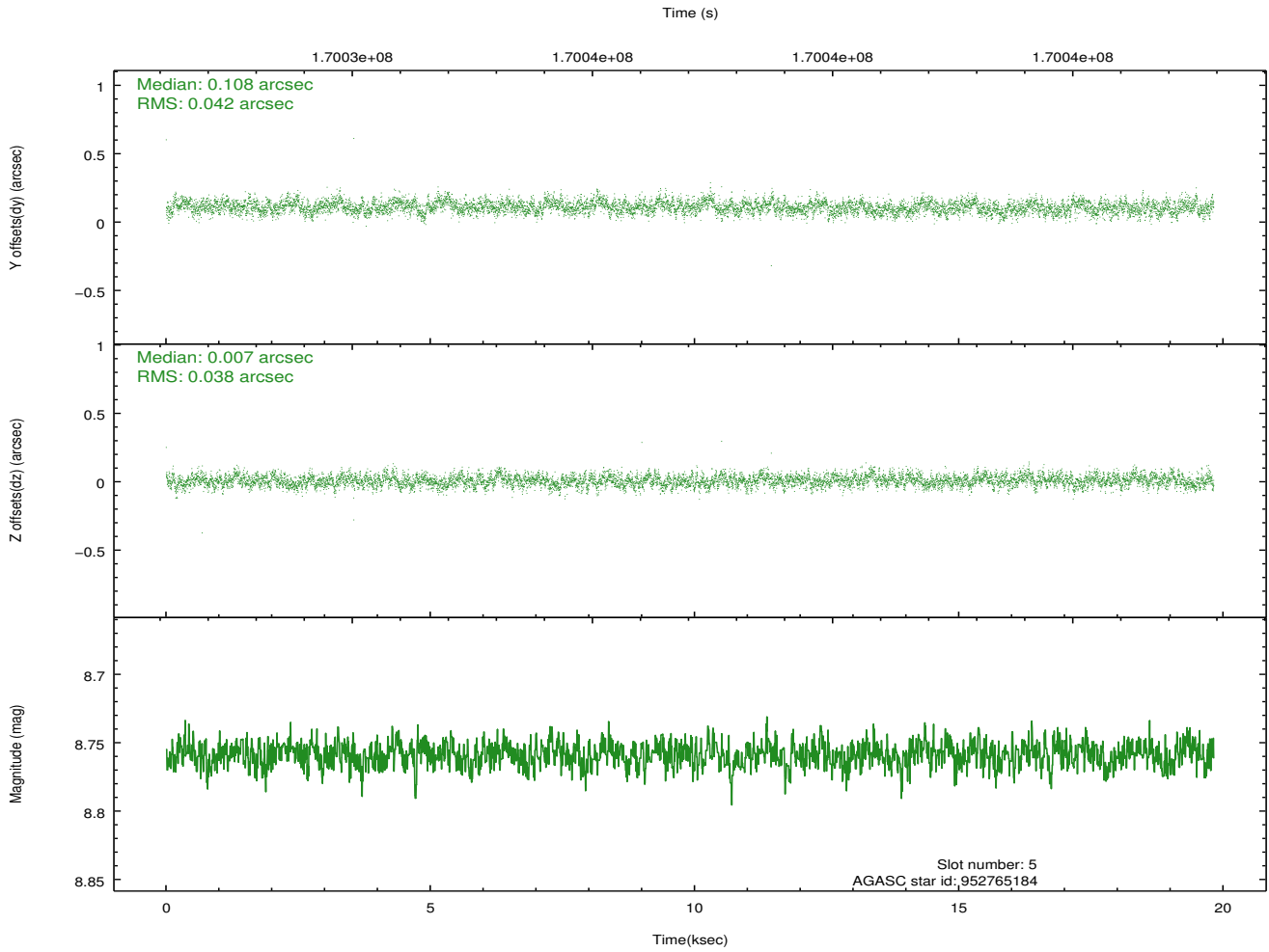
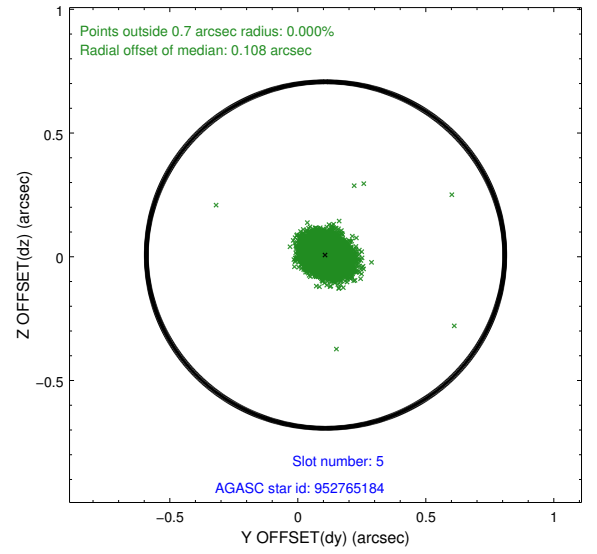
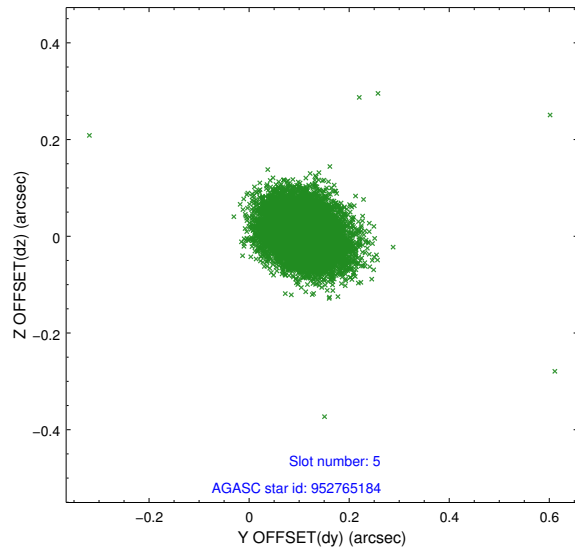
slot	status	id	mag	n_pts	med_dy	med_dz	dr1	dr2	ra	dec	mean_y	mean_z
0	FID	ACIS-I-1	7.24	4835	0.014	0.012	0.009	0.016	0.000000	0.000000	937.06	-830.70
1	FID	ACIS-I-5	7.24	4835	-0.085	0.057	0.008	0.014	0.000000	0.000000	-1811.01	1066.79
2	FID	ACIS-I-6	7.26	4835	-0.020	0.002	0.009	0.014	0.000000	0.000000	402.41	1711.41
3	GUIDE	952250784	8.84	9664	-0.012	-0.010	0.082	0.129	204.009440	-31.028720	-1658.47	2296.99
4	OMITTED		0.00	0	0.000	0.000	0.000	0.000	0.000000	0.000000	0.00	0.00
5	GUIDE	952765184	8.76	9666	0.108	0.007	0.060	0.098	203.344875	-32.058909	1611.15	-389.92
6	GUIDE	952251232	7.26	9669	-0.088	0.006	0.051	0.083	202.949910	-31.055331	-2160.33	-933.75
7	GUIDE	952765400	7.06	9669	-0.006	-0.004	0.055	0.090	203.800983	-32.212390	2409.07	875.12

2.4 Star Slots

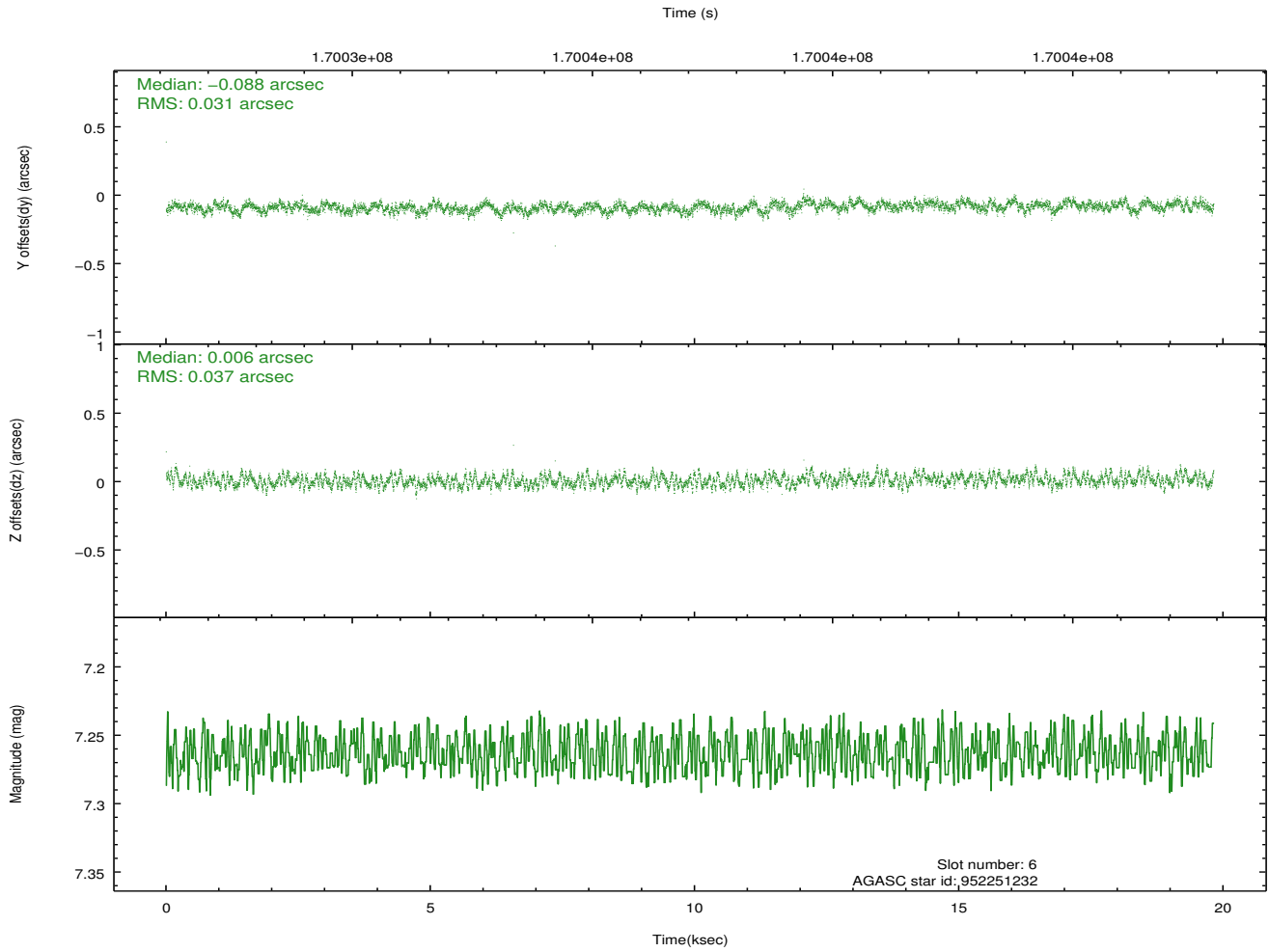
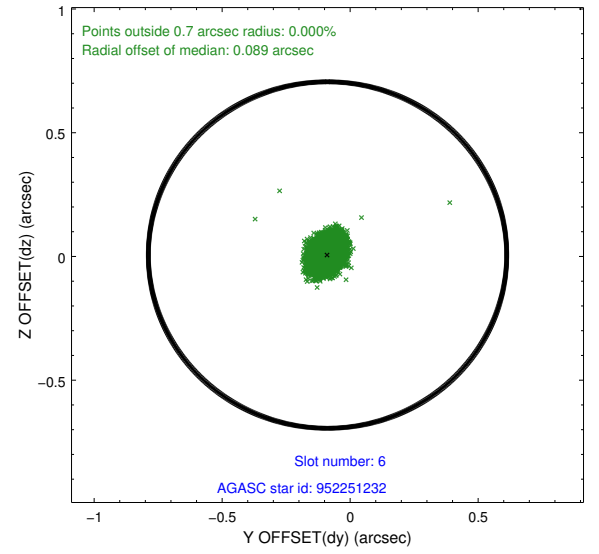
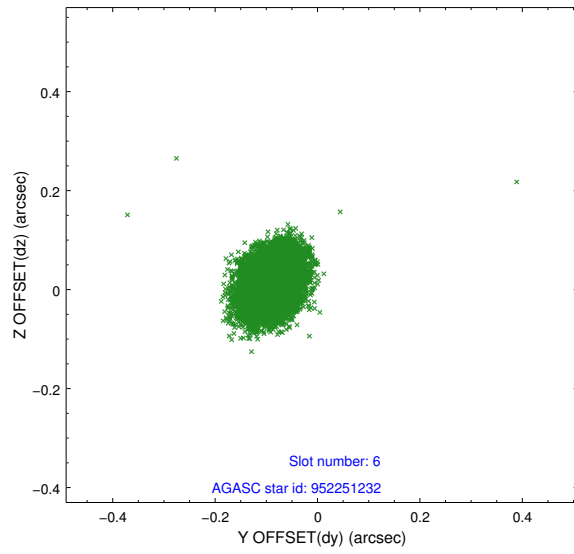
2.4.1 Slot 3



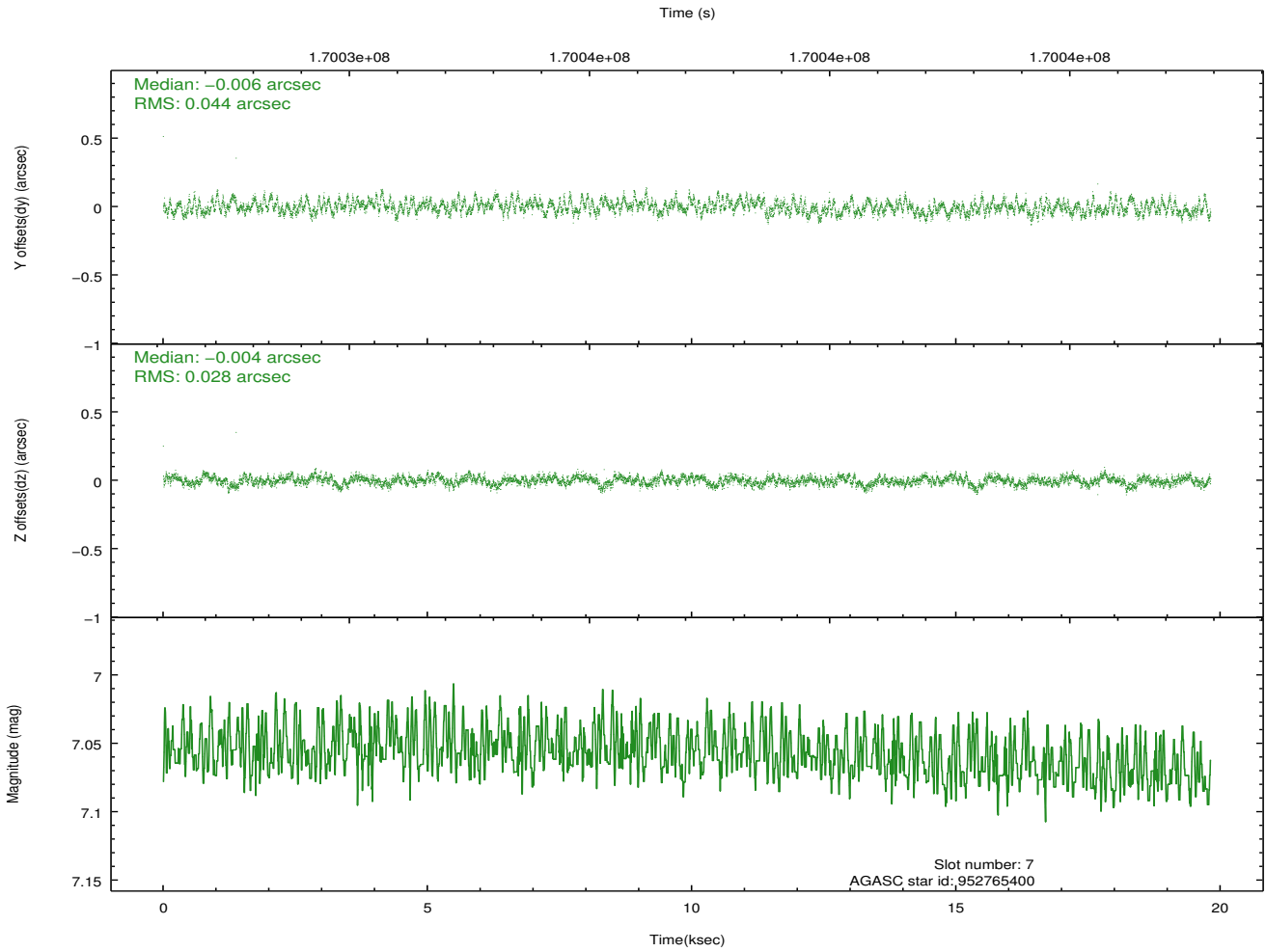
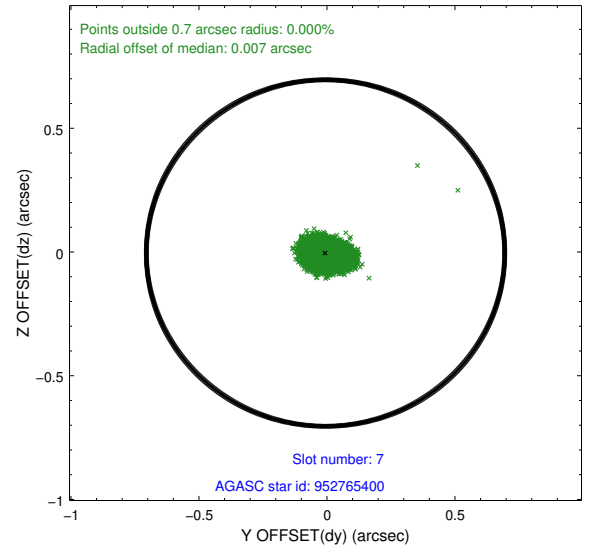
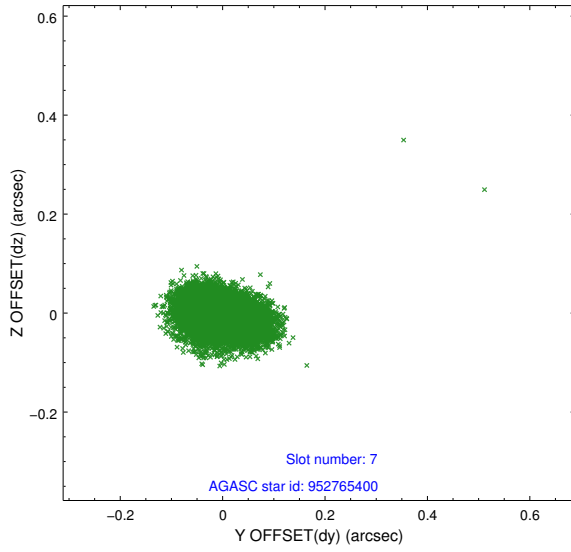
2.4.2 Slot 5



2.4.3 Slot 6

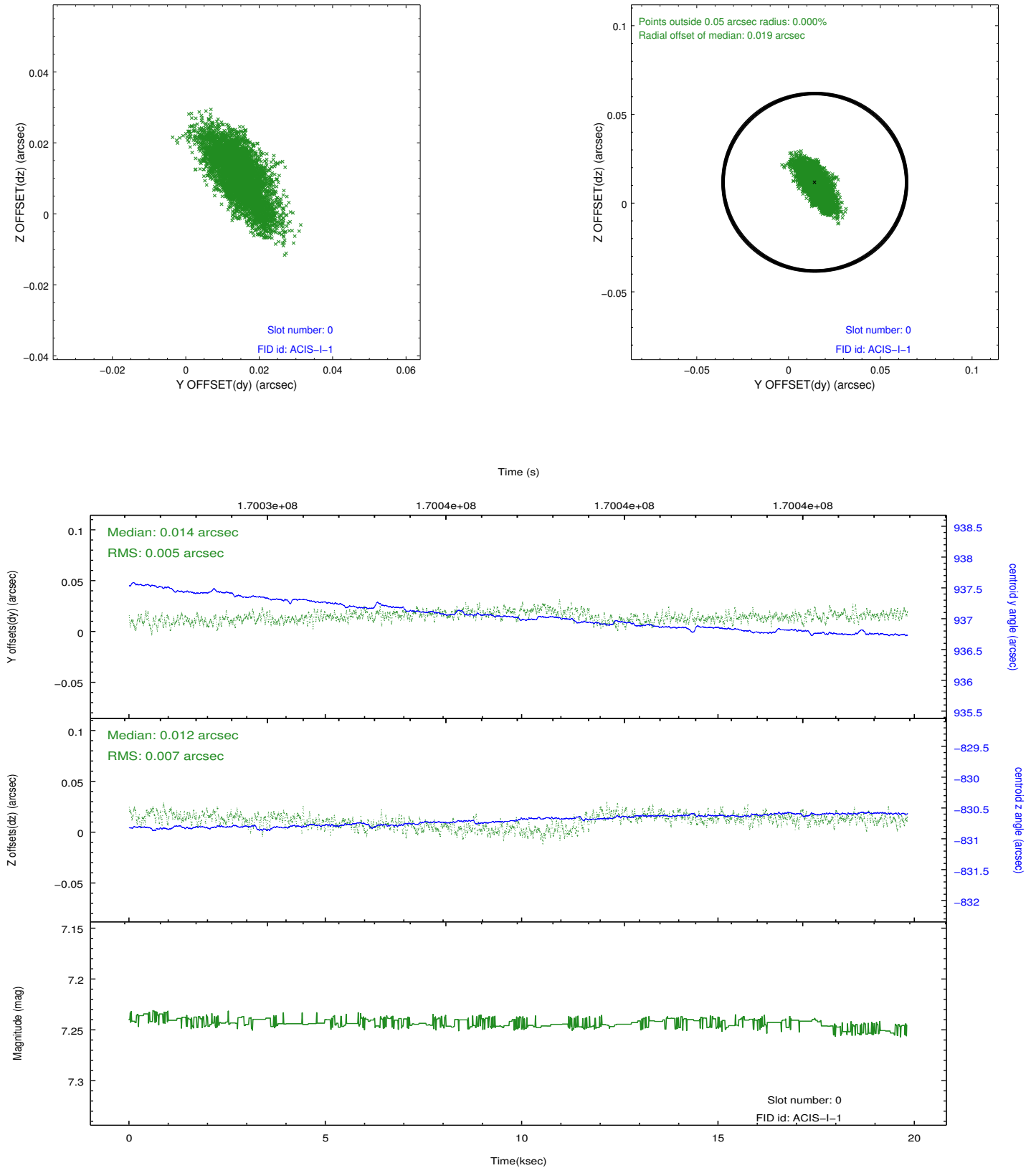


2.4.4 Slot 7

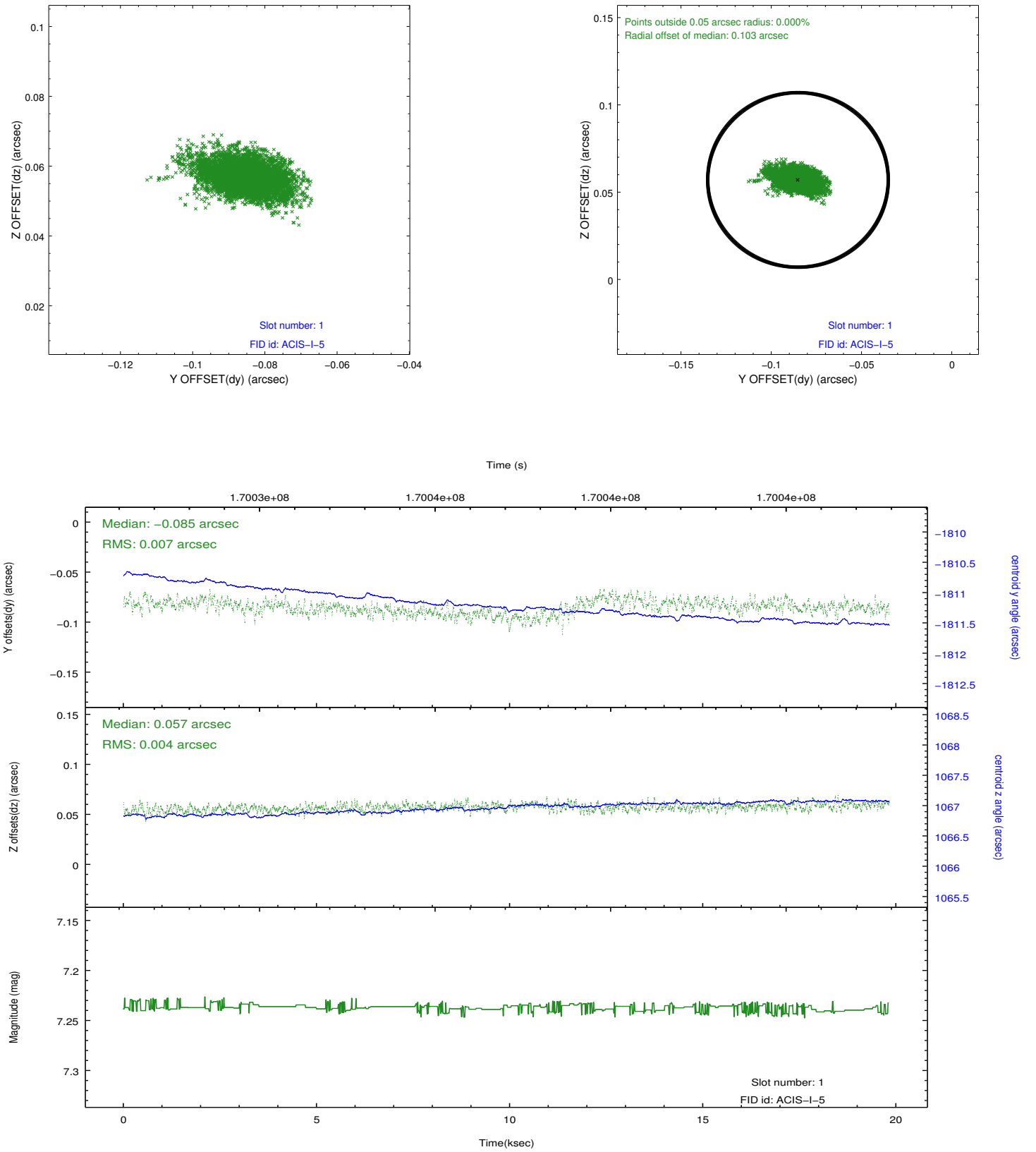


2.5 FID Slots

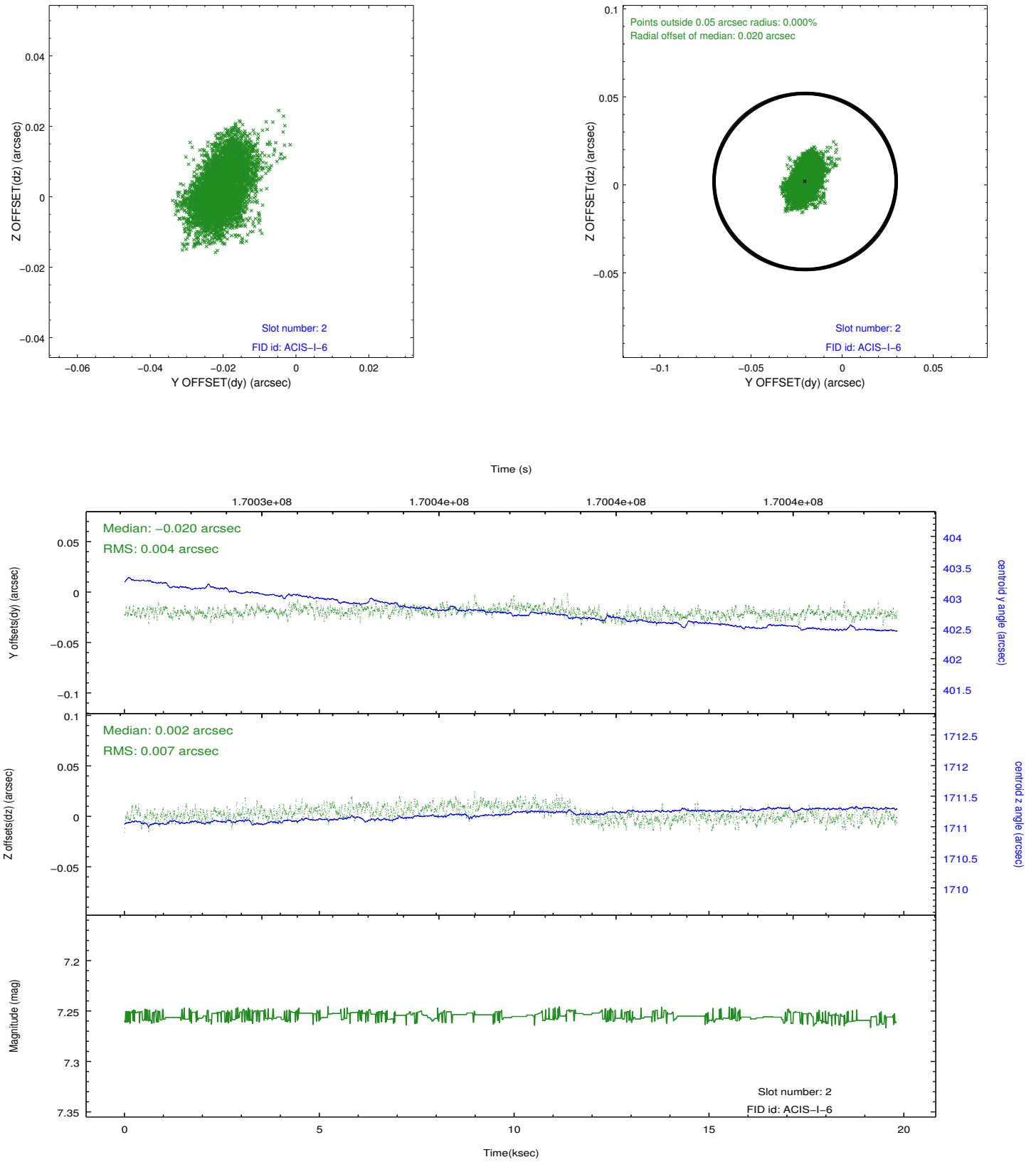
2.5.1 Slot 0



2.5.2 Slot 1



2.5.3 Slot 2



A Summary

A.1 Status

V&V Scientist	Beth Sundheim
V&V Date (YYYY-MM-DD)	2013.01.10
V&V Edition	1
V&V Disposition and Status	OK
V&V Charge Time	19.539

A.2 Comments

The guide star in slot 4 was removed from the aspect solution due to poor data quality. The aspect solution is improved by the removal of this star from the solution.