

V&V Reference Report

L2 ASCDS Version : 7.6.8

Observation 3590 - L2 Version 001
Chandra X-Ray Center

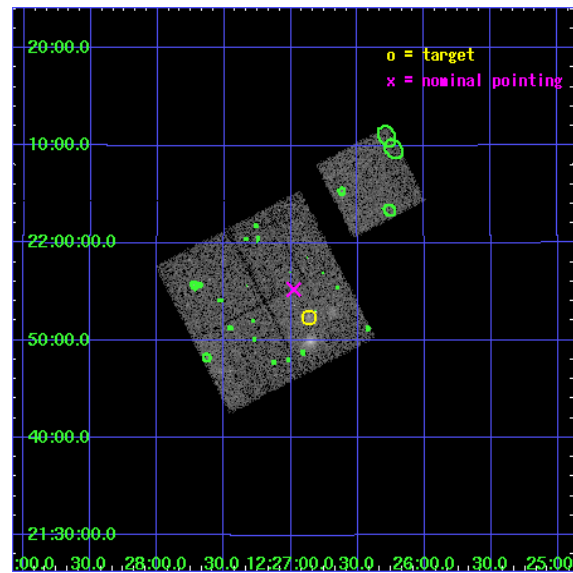
L2 Processing Date : Jun 23 2006

Contents

1	Front	2
2	OBI	3
2.1	OBI	3
2.1.1	Images	3
2.1.2	Bias	3
2.1.3	Parameters	4
2.1.4	Events	4
2.2	Compared Parameters	5
2.3	Aspect	6
2.4	Star Slots	9
2.4.1	Slot 3	9
2.4.2	Slot 4	10
2.4.3	Slot 5	11
2.4.4	Slot 6	12
2.4.5	Slot 7	13
2.5	FID Slots	14
2.5.1	Slot 0	14
2.5.2	Slot 1	15
2.5.3	Slot 2	16
3	Point Sources	17
A	Summary	18
A.1	Status	18
A.2	Comments	18

1 Front

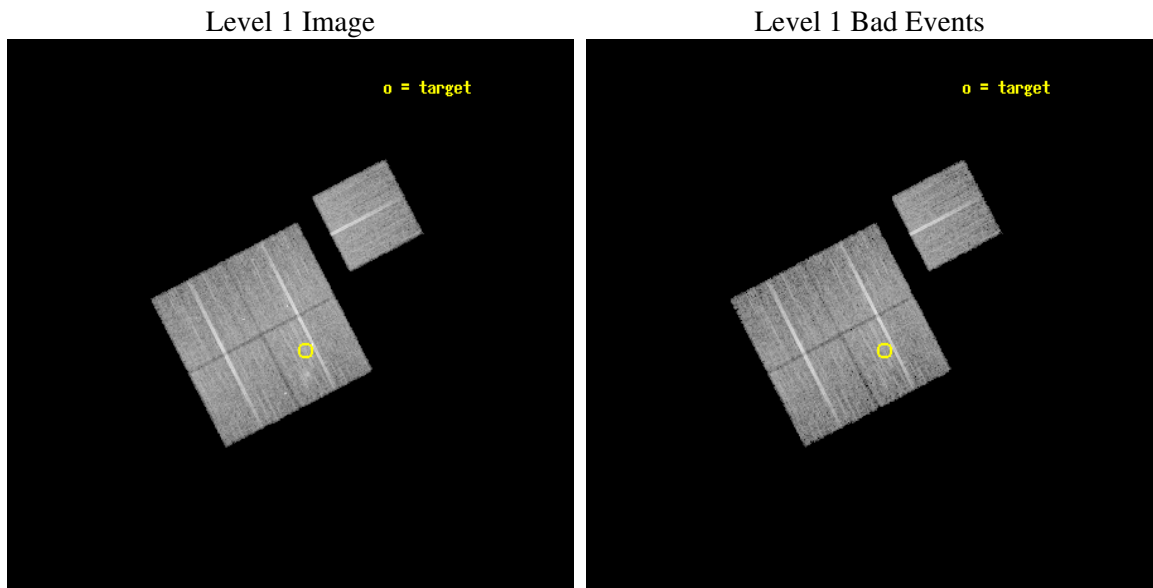
seq_num	800311
obs_id	3590
title	X-RAY/SZ DETERMINATION OF COSMOLOGICAL PARAMETERS
observer	DR. LEON VANSPEYBROECK
object	MACS-J1226.8+2153
dtcycle	0
cycle	P
ra_targ	186.715417
dec_targ	21.873611
ra_nom	186.7442068272
dec_nom	21.920911293923
roll_nom	62.650164334553
revision	2
ontime	19260.177052259
livetime	19008.528659936
ontime0	19260.177062243
ontime1	19263.318032473
ontime2	19260.17705223
ontime3	19260.177052259
ontime6	19263.318022519
l2events	45890



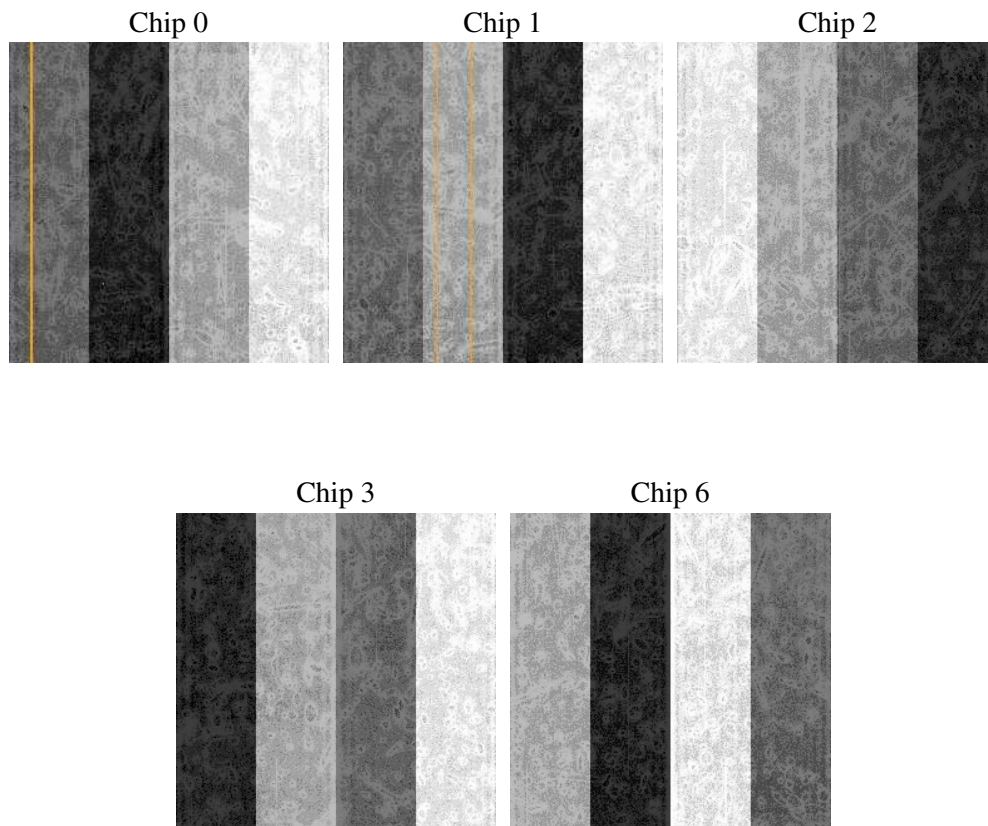
2 OBI

2.1 OBI

2.1.1 Images



2.1.2 Bias



2.1.3 Parameters

obi_num	0
ascdsver	7.6.8
caldbver	3.2.2
date	2006-06-23T15:05:40
revision	2

sched_exp_time	19500.000000
ontime	19266.906366199
ontime0	19266.906376183
ontime1	19270.047346413
ontime2	19266.906366169
ontime3	19266.906366199
ontime6	19270.047366351
l1events	454631

2.1.4 Events

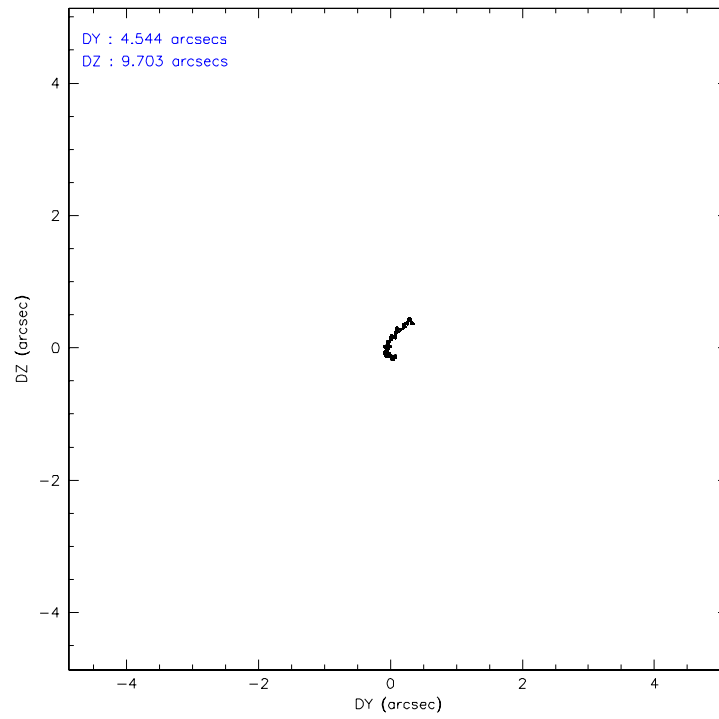
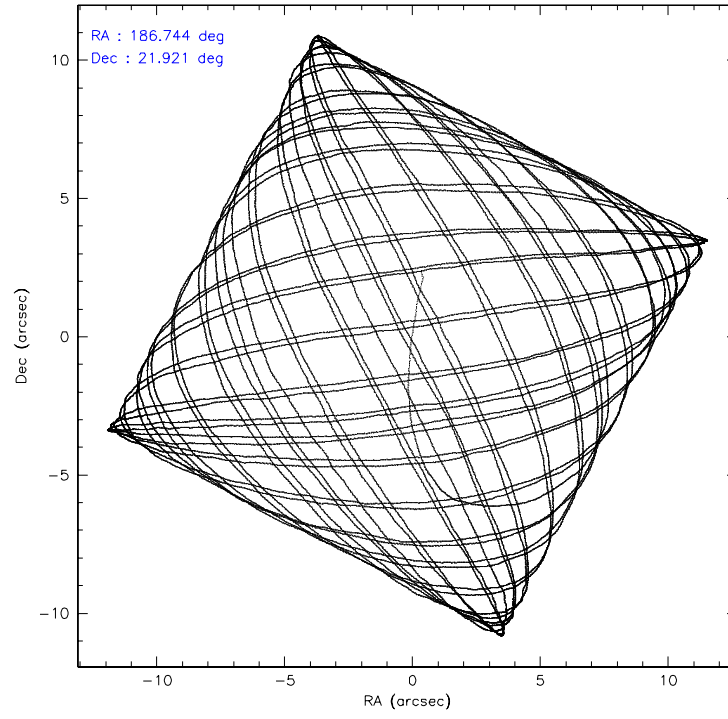
	ccd 0	ccd 1	ccd 2	ccd 3	ccd 6
level 1 events	86232	86502	94405	93717	93775
rejected events	76000	75246	84288	81599	83529
rejected %	88%	86%	89%	87%	89%

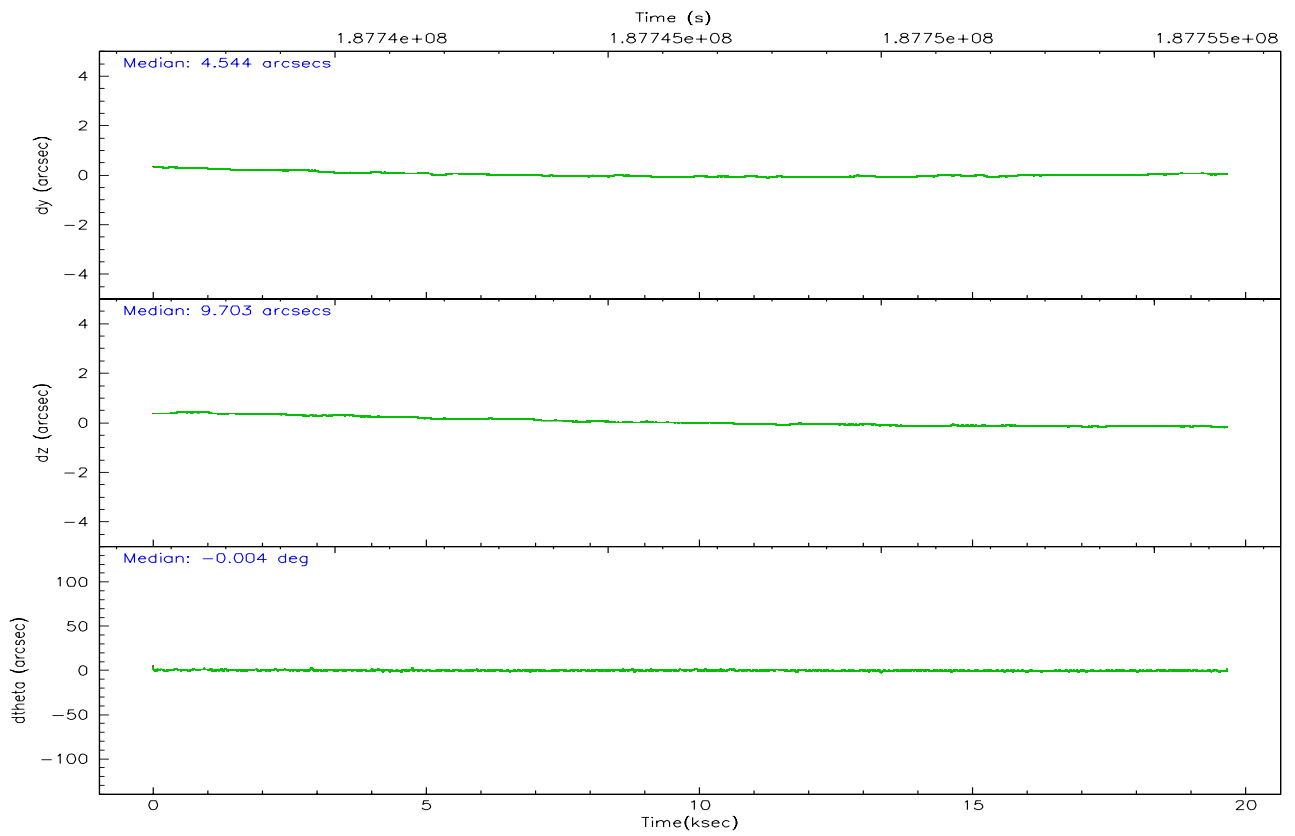
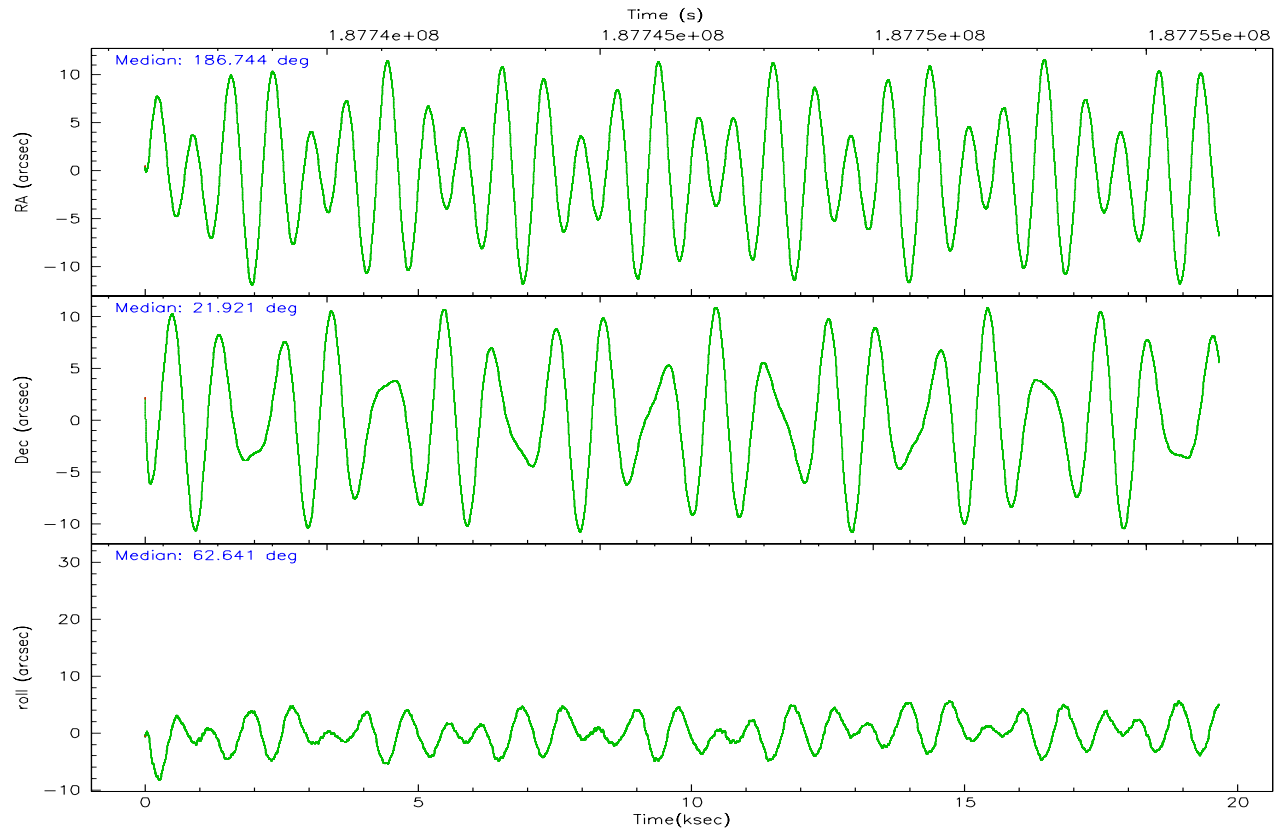
	ccd 0	ccd 1	ccd 2	ccd 3	ccd 6
grade 0 events	3906	4452	4047	5842	3866
	4%	5%	4%	6%	4%
grade 1 events	37	40	51	61	45
	0%	0%	0%	0%	0%
grade 2 events	2246	2295	2195	2182	2036
	2%	2%	2%	2%	2%
grade 3 events	1154	1212	1120	1174	1118
	1%	1%	1%	1%	1%
grade 4 events	1066	1184	1039	1090	1107
	1%	1%	1%	1%	1%
grade 5 events	3307	3675	3140	3546	3782
	3%	4%	3%	3%	4%
grade 6 events	1867	2119	1724	1834	2121
	2%	2%	1%	1%	2%
grade 7 events	72649	71525	81089	77988	79700
	84%	82%	85%	83%	84%

2.2 Compared Parameters

Parameter	Planned	Actual	Parameter	Planned	Actual
Instrument	ACIS	ACIS	Obspar format version number	6	6
Detector	ACIS-01236	ACIS-01236	Obspar file type	PREDICTED	ACTUAL
Grating	NONE	NONE	Obspar update status	NONE	UPDATED
Data mode	VFAINT	VFAINT	On-chip summing requested	N	N
Observation mode	POINTING	POINTING	Subarray requested	NONE	NONE
Pointing RA	186.745674	186.7442068271951	Alternating exposures requested	N	N
Pointing Dec	21.893555	21.92091129392278	Primary exposure time	0.000000	3.1
Pointing Roll	62.440934	62.65016433455292			
SIM focus pos (mm)	-0.782348	-0.7809083437167272			
SIM defocus (mm)	0	0.001439871863259334			
SIM translation stage pos (mm)	-225.840463	-225.8458576473255			
SIM translation stage offset (mm)	-7.752	-7.746595355604228			
Observation start time	187736832.184000	187735850.59236			
Observation start date	2003-12-13T21:06:08	2003-12-13T20:50:50			
Observation end time	187756332.184000	187756961.49327			
Observation end date	2003-12-14T02:31:08	2003-12-14T02:42:41			
Read mode	TIMED	TIMED			

2.3 Aspect



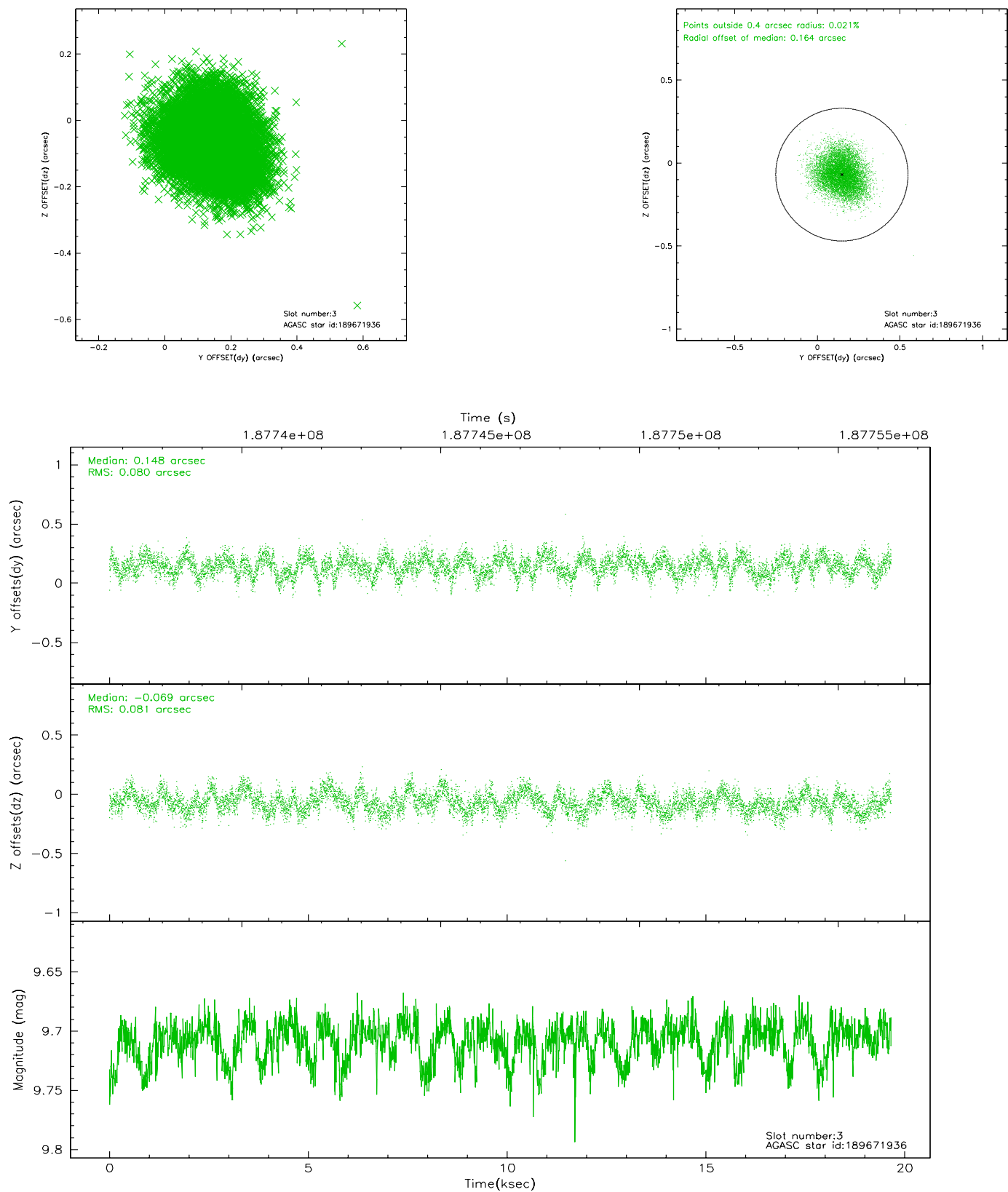


Slot Statistics

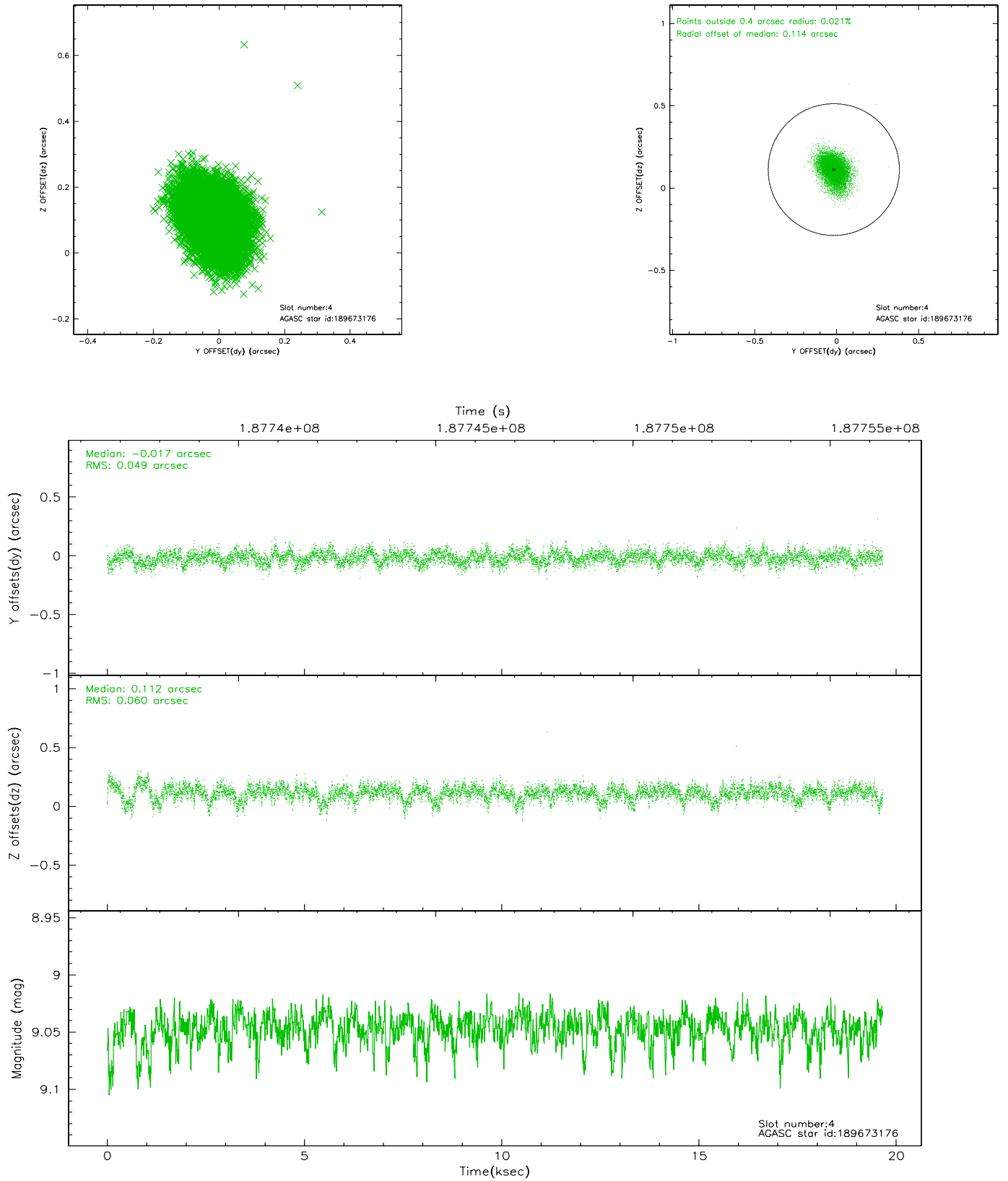
slot	status	id	mag	n_pts	med_dy	med_dz	dr1	dr2	ra	dec	mean_y	mean_z
0	FID	ACIS-I-2	7.17	4789	-0.052	-0.022	0.015	0.025	0.000000	0.000000	-759.58	-997.62
1	FID	ACIS-I-4	7.15	4790	0.021	0.042	0.007	0.012	0.000000	0.000000	2154.39	908.49
2	FID	ACIS-I-5	7.21	4789	-0.070	0.048	0.012	0.019	0.000000	0.000000	-1812.81	905.50
3	GUIDE	189671936	9.71	9584	0.148	-0.069	0.124	0.192	186.395770	21.832299	-735.91	935.15
4	GUIDE	189673176	9.05	9585	-0.017	0.112	0.081	0.138	187.200549	22.003376	1055.11	-1161.53
5	GUIDE	260708840	9.44	9580	-0.117	-0.063	0.086	0.142	186.608655	22.672187	2274.55	1700.80
6	GUIDE	189673464	9.00	9583	0.102	-0.269	0.097	0.152	186.126502	22.164808	-86.03	2283.90
7	GUIDE	189679944	7.64	9584	-0.111	0.293	0.072	0.114	187.582959	21.948245	1475.00	-2382.87

2.4 Star Slots

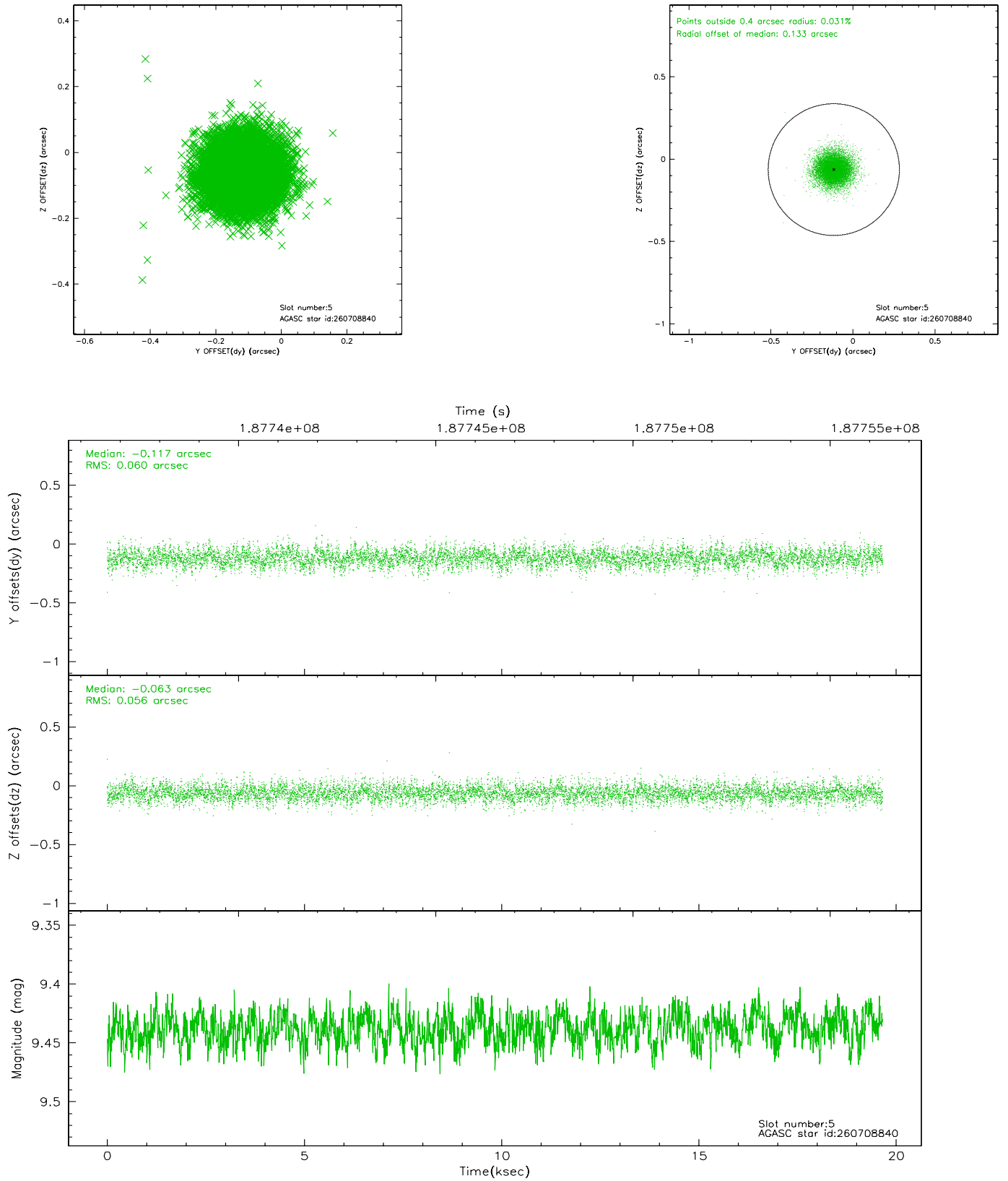
2.4.1 Slot 3



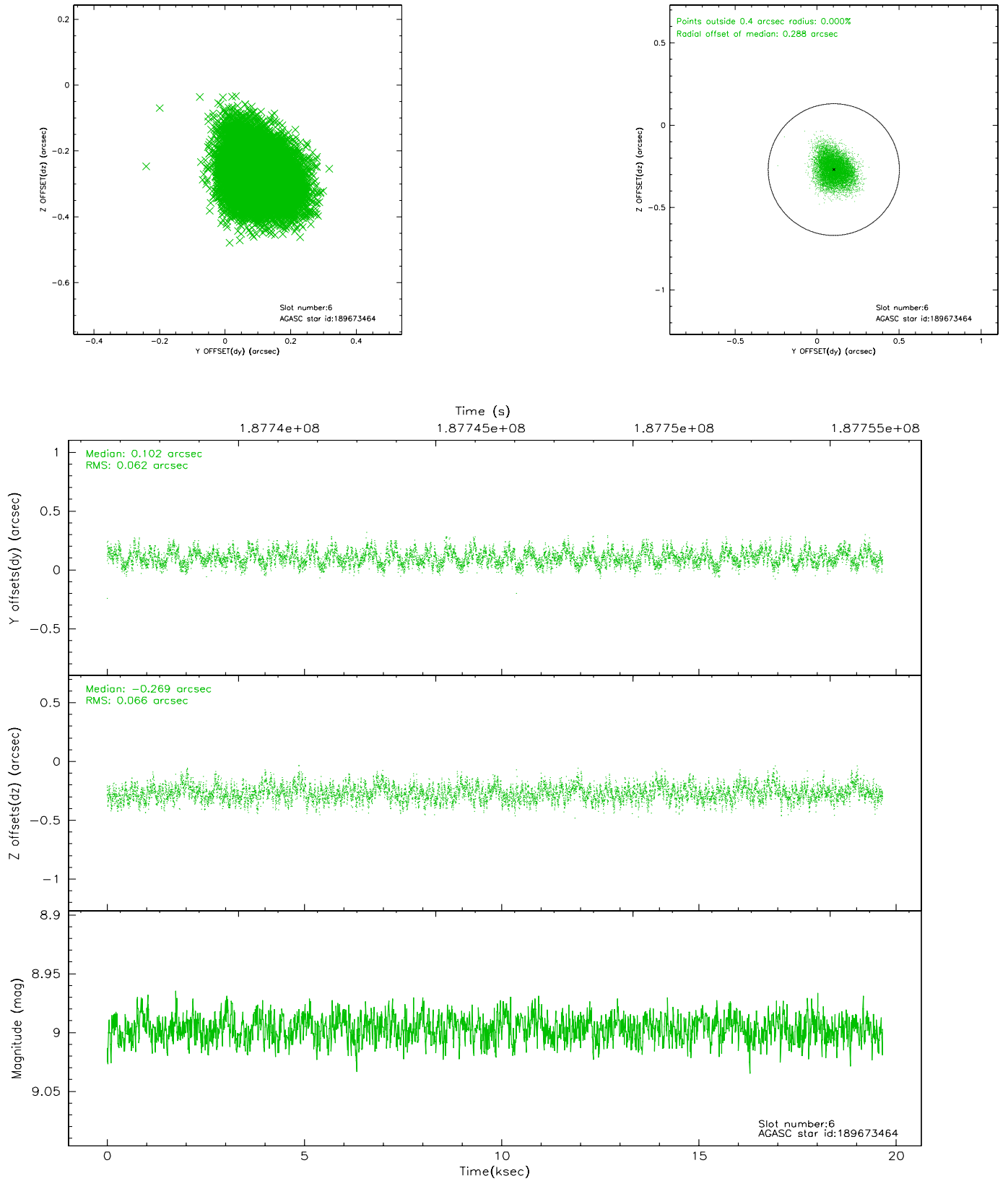
2.4.2 Slot 4



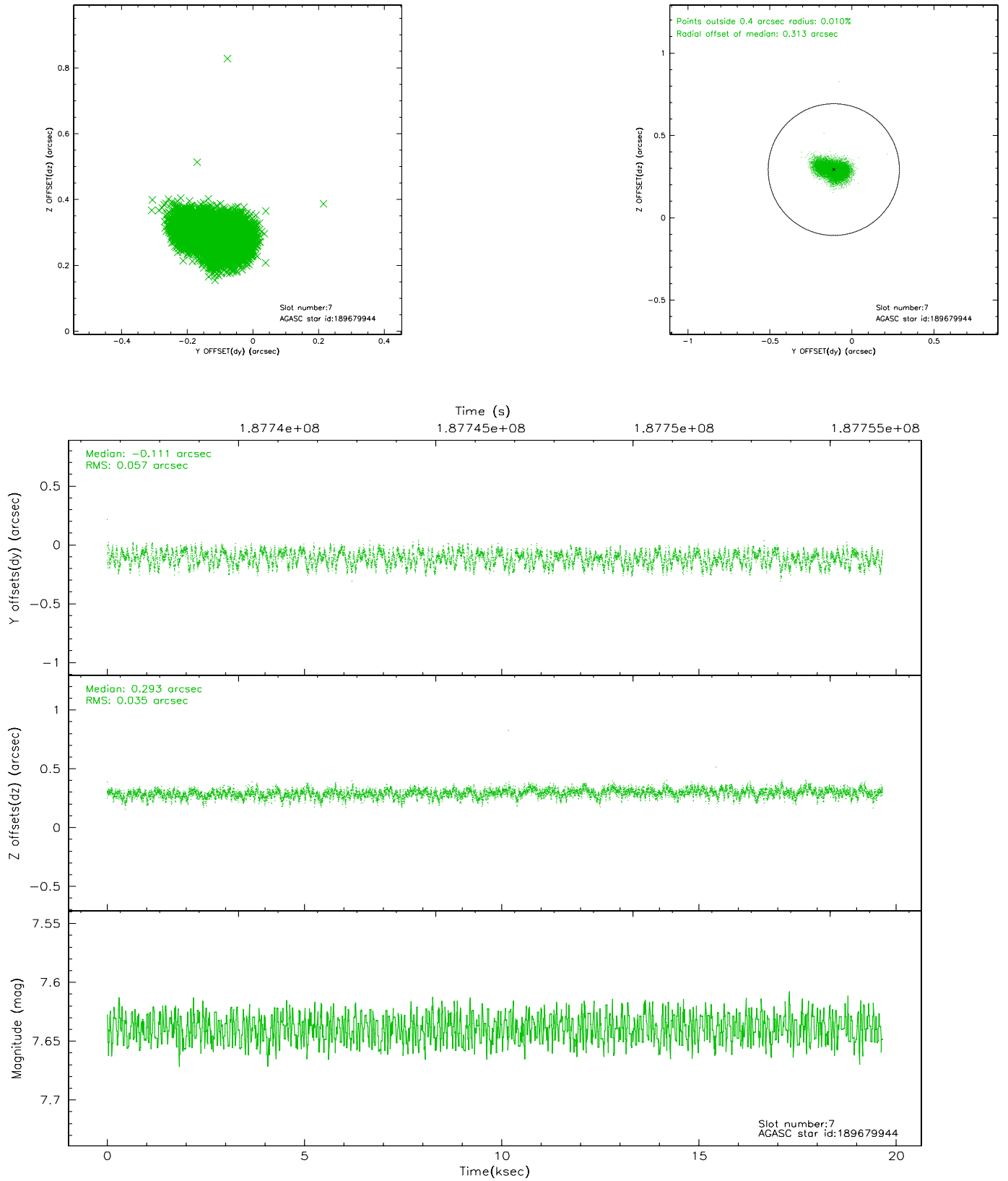
2.4.3 Slot 5



2.4.4 Slot 6

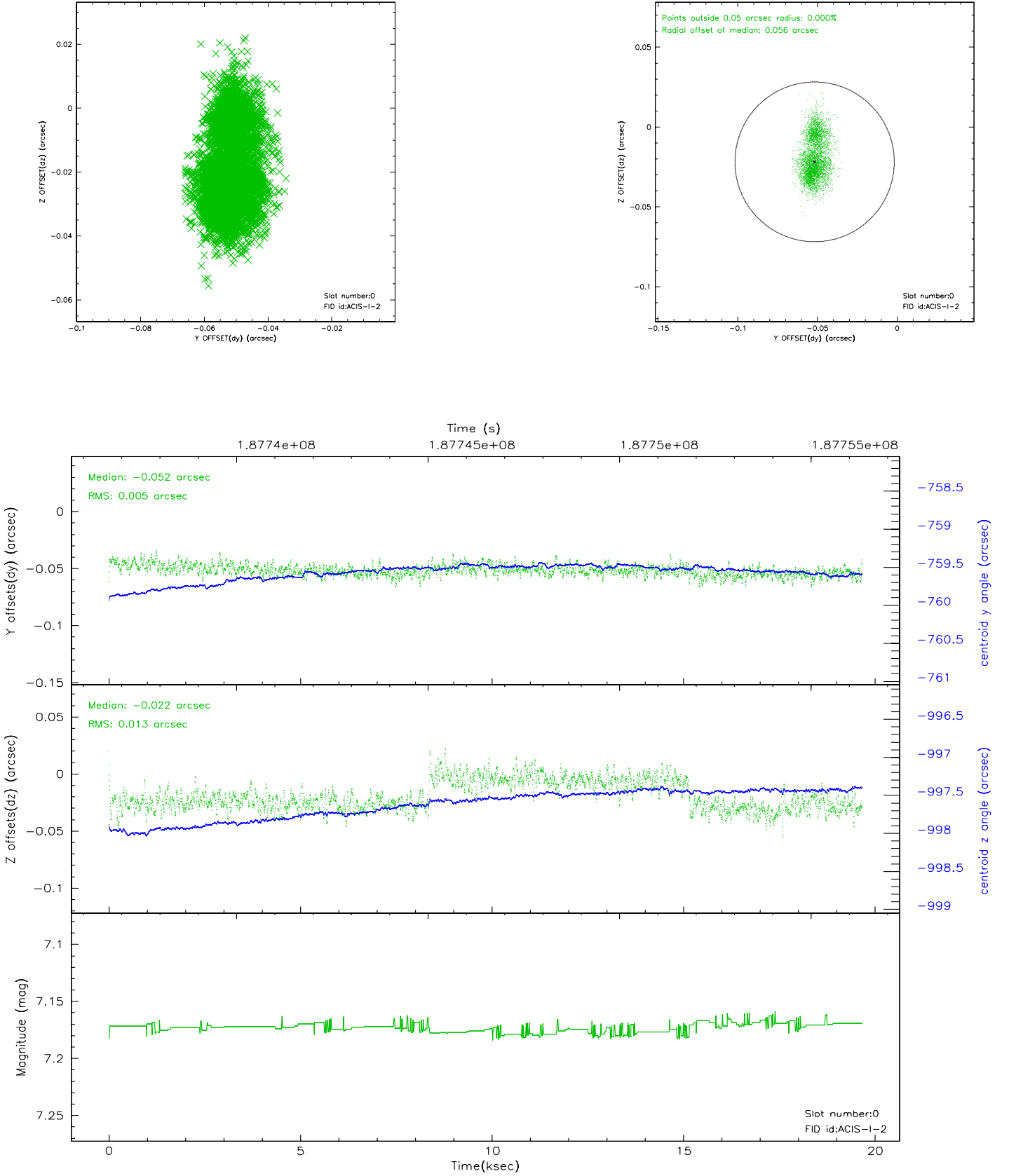


2.4.5 Slot 7

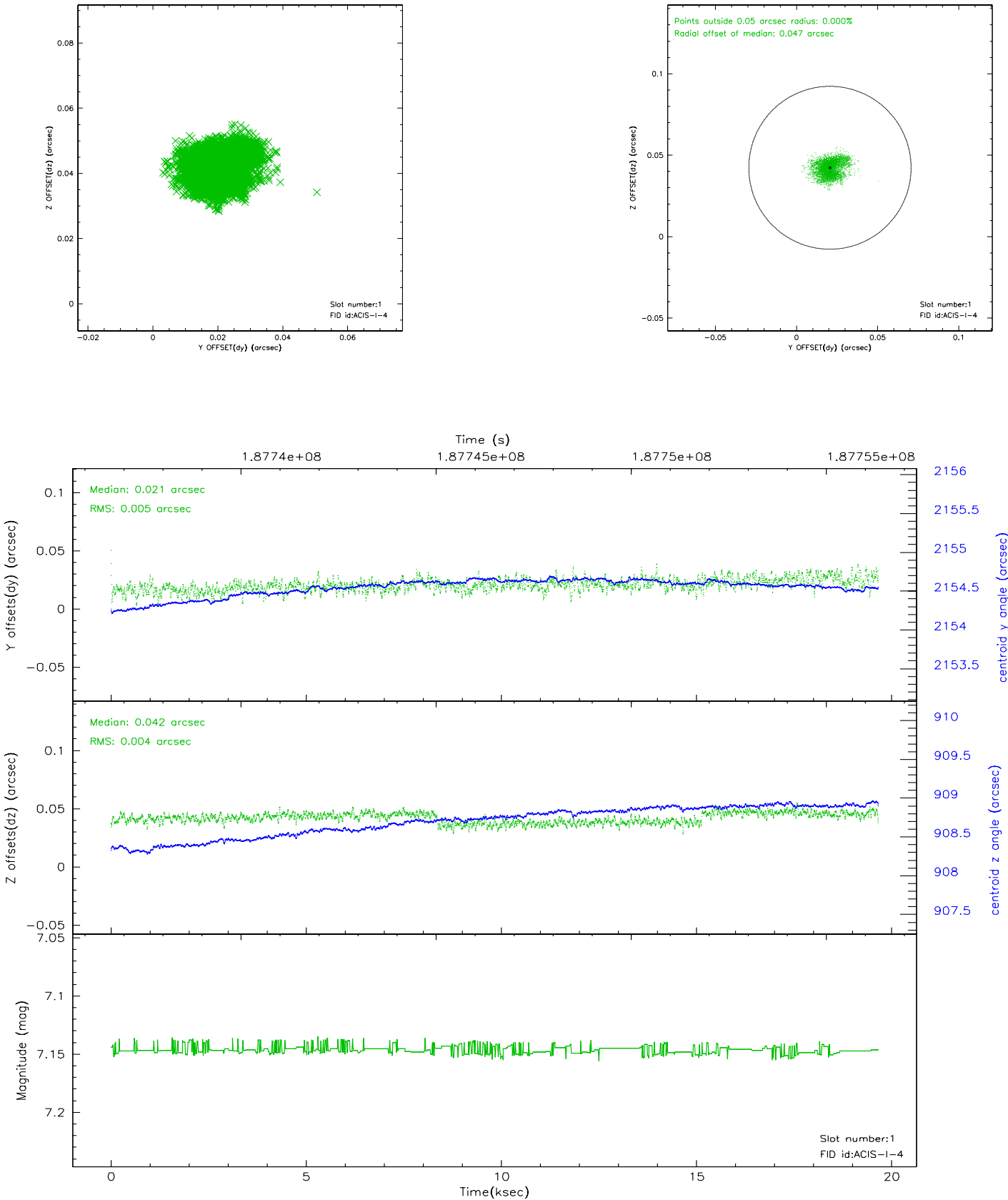


2.5 FID Slots

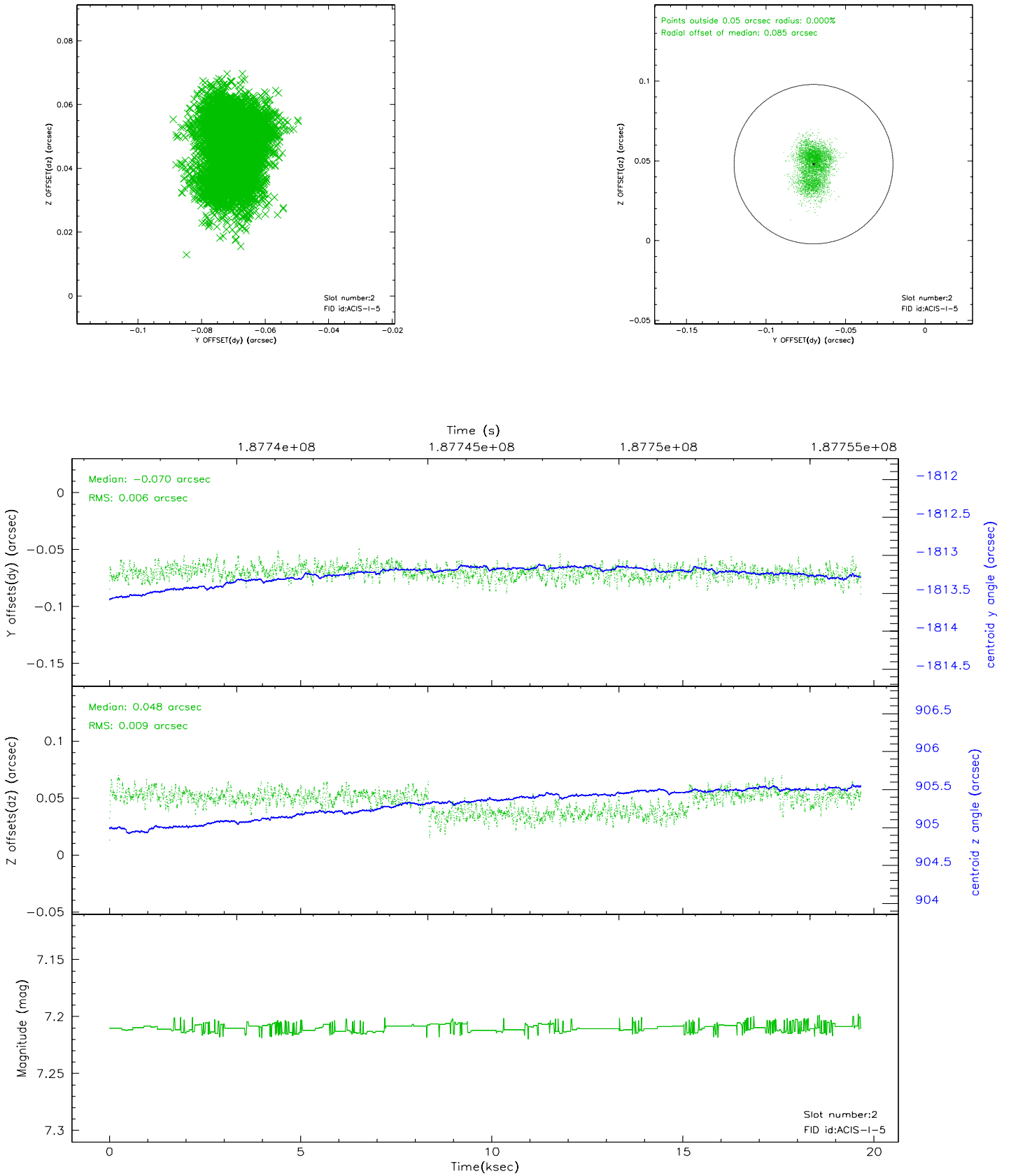
2.5.1 Slot 0



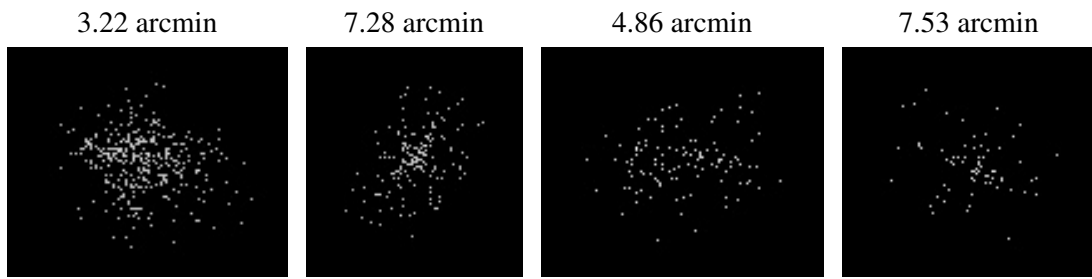
2.5.2 Slot 1



2.5.3 Slot 2



3 Point Sources



A Summary

A.1 Status

V&V Scientist	Jen Lauer
V&V Date (YYYY-MM-DD)	2006.06.23
V&V Edition	1
V&V Disposition and Status	OK
V&V Charge Time	19.263

A.2 Comments