

V&V Reference Report

L2 ASCDS Version : 7.6.8

Observation 3461 - L2 Version 001
Chandra X-Ray Center

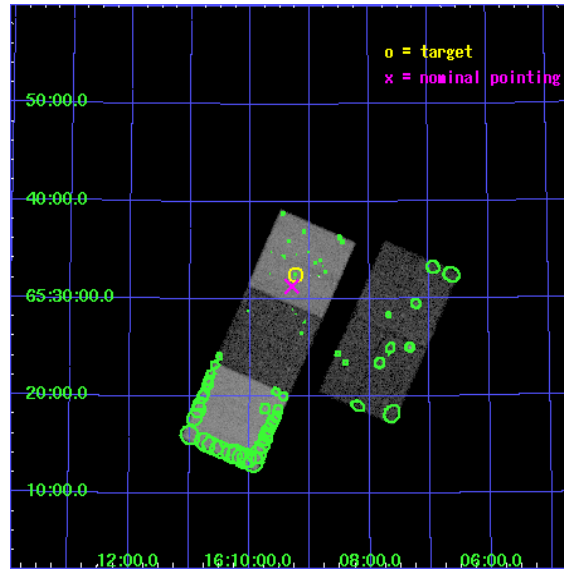
L2 Processing Date : Jul 4 2006

Contents

1	Front	2
2	OBI	3
2.1	OBI	3
2.1.1	Images	3
2.1.2	Bias	3
2.1.3	Parameters	4
2.1.4	Events	4
2.2	Compared Parameters	5
2.3	Aspect	6
2.4	Star Slots	9
2.4.1	Slot 3	9
2.4.2	Slot 4	10
2.4.3	Slot 5	11
2.4.4	Slot 6	12
2.4.5	Slot 7	13
2.5	FID Slots	14
2.5.1	Slot 0	14
2.5.2	Slot 1	15
2.5.3	Slot 2	16
3	Point Sources	17
A	Summary	18
A.1	Status	18
A.2	Comments	18

1 Front

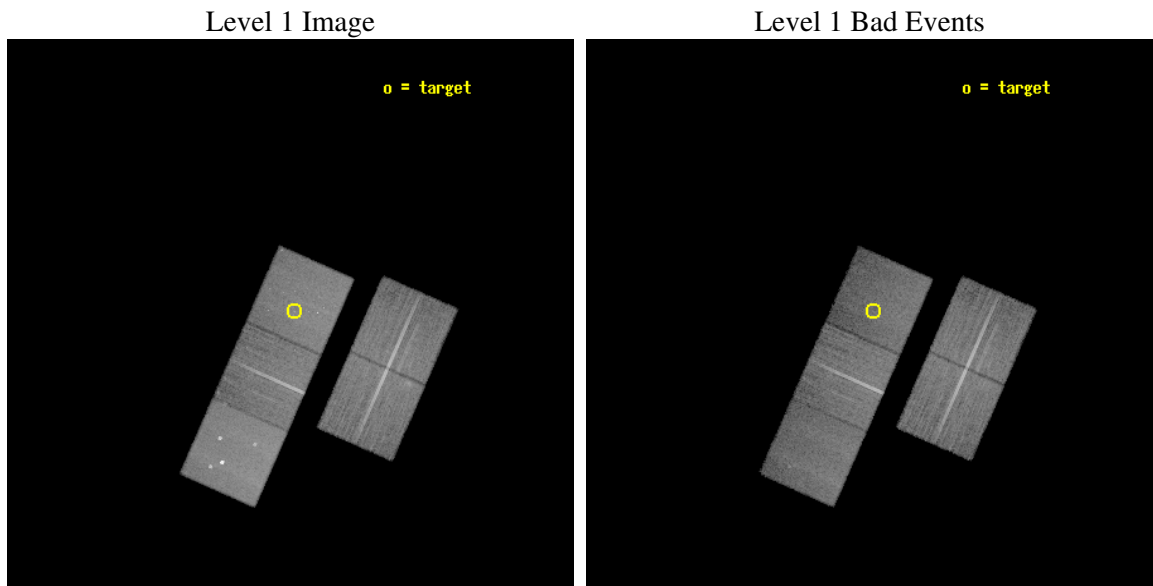
seq_num	800295
obs_id	3461
title	THE HOST GALAXIES OF TIME DELAY LENSES: AN INDEPENDENT ROUTE TO THE HUBBLE CONSTANT
observer	Dr. Chistopher Kochanek
object	B1608+656
dtcycle	0
cycle	P
ra_targ	242.308333
dec_targ	65.541389
ra_nom	242.32465298583
dec_nom	65.521786142479
roll_nom	293.81683947471
revision	2
ontime	30110.299942106
livetime	29716.886706482
ontime2	30100.877151072
ontime3	30094.595080912
ontime5	30110.299942106
ontime6	30107.158971876
ontime7	30110.299942106
l2events	210276



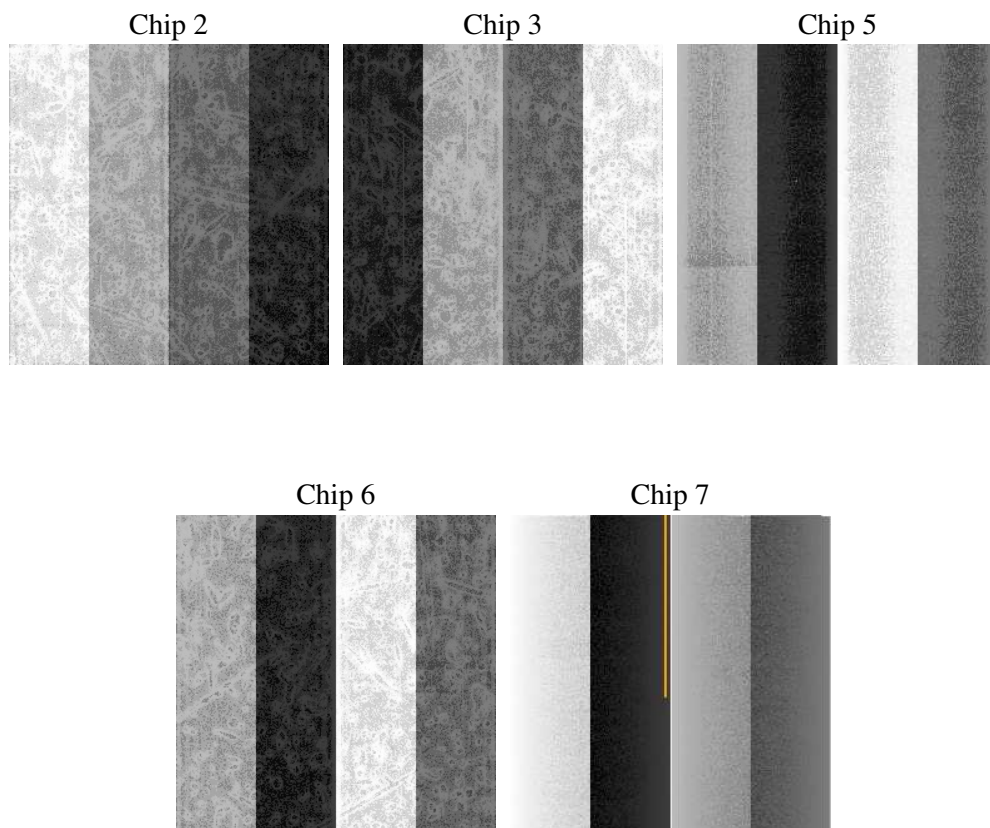
2 OBI

2.1 OBI

2.1.1 Images



2.1.2 Bias



2.1.3 Parameters

obi_num	0
ascdsver	7.6.8
caldbver	3.2.2
date	2006-07-04T10:41:22
revision	2

sched_exp_time	30000.000000
ontime	30979.700519234
ontime2	30970.2777282
ontime3	30963.99565804
ontime5	30979.700519234
ontime6	30976.559549004
ontime7	30979.700519234
l1events	920583

2.1.4 Events

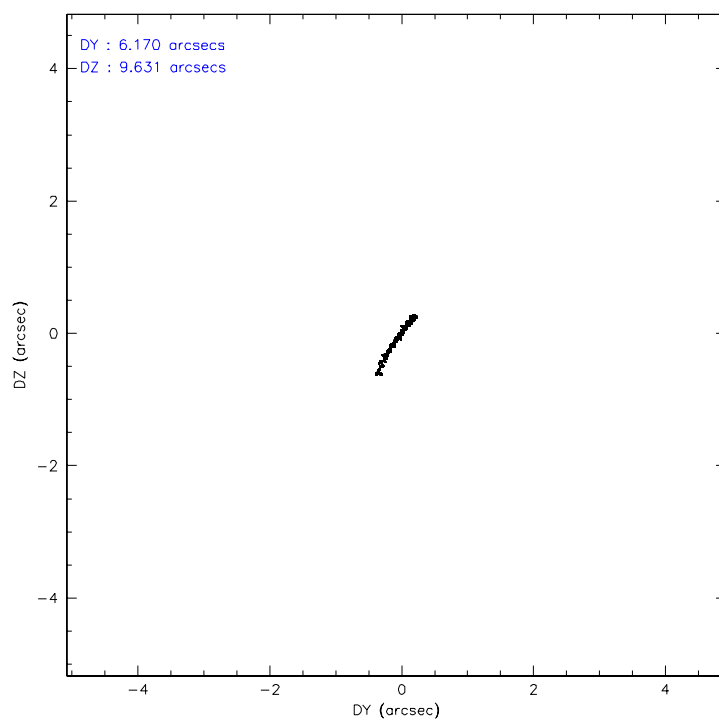
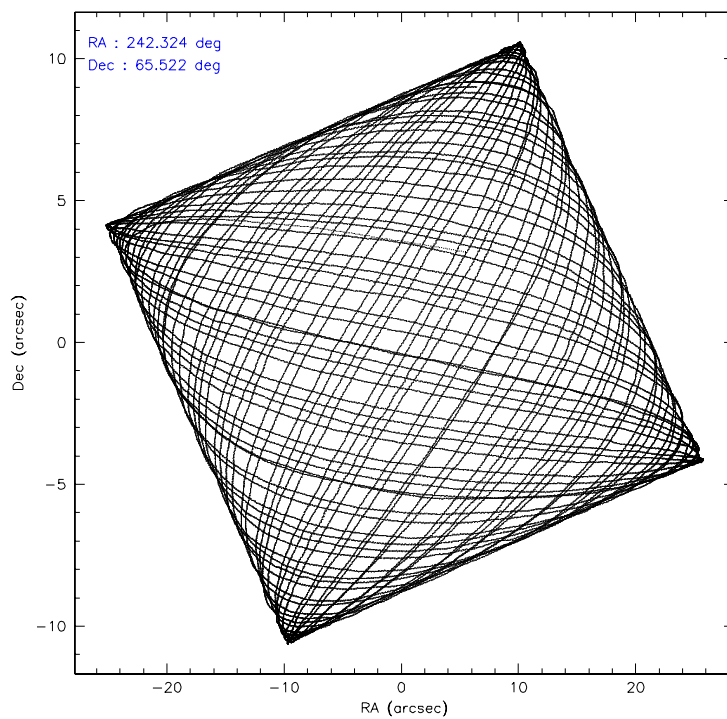
	ccd 2	ccd 3	ccd 5	ccd 6	ccd 7
level 1 events	171594	165185	230047	168006	185751
rejected events	155824	150193	120953	151350	109231
rejected %	90%	90%	52%	90%	58%

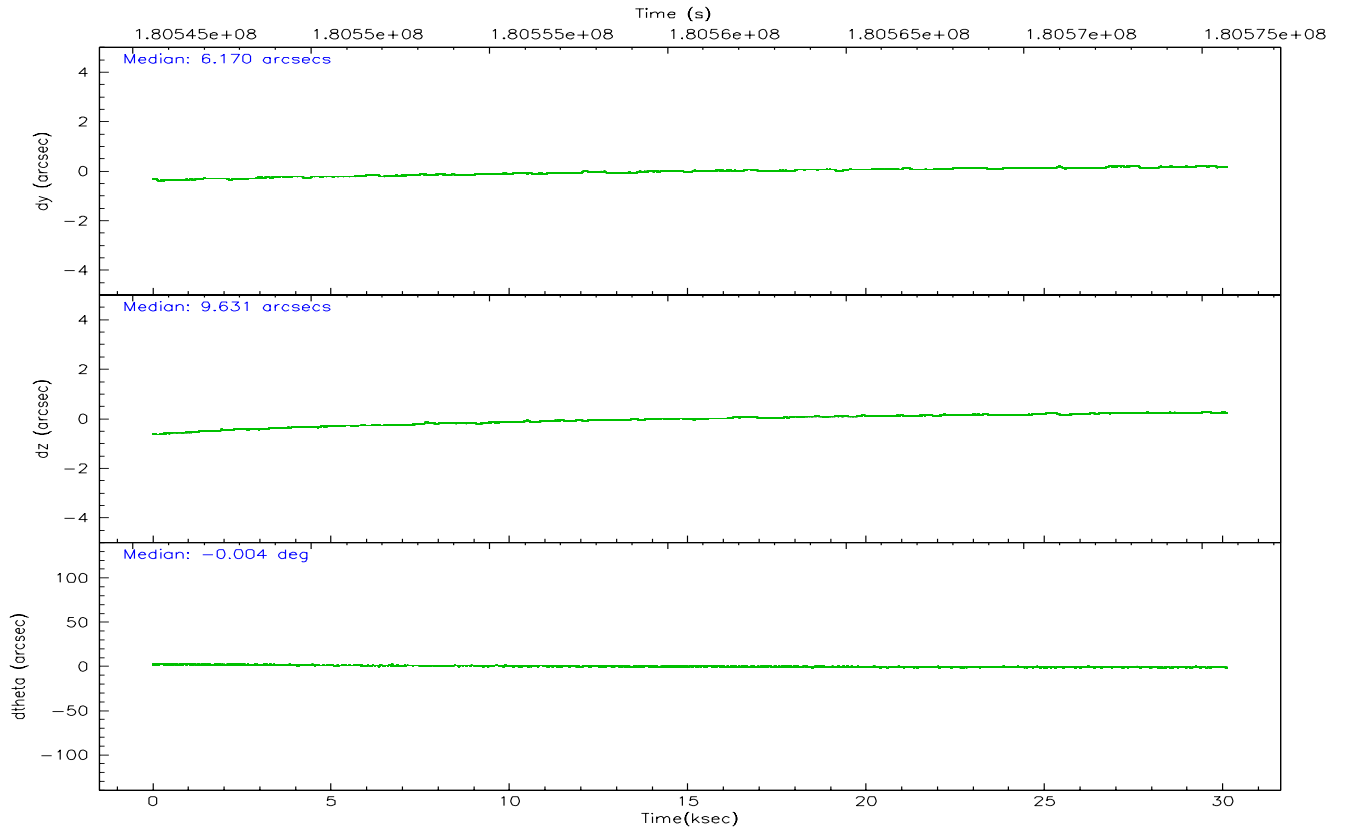
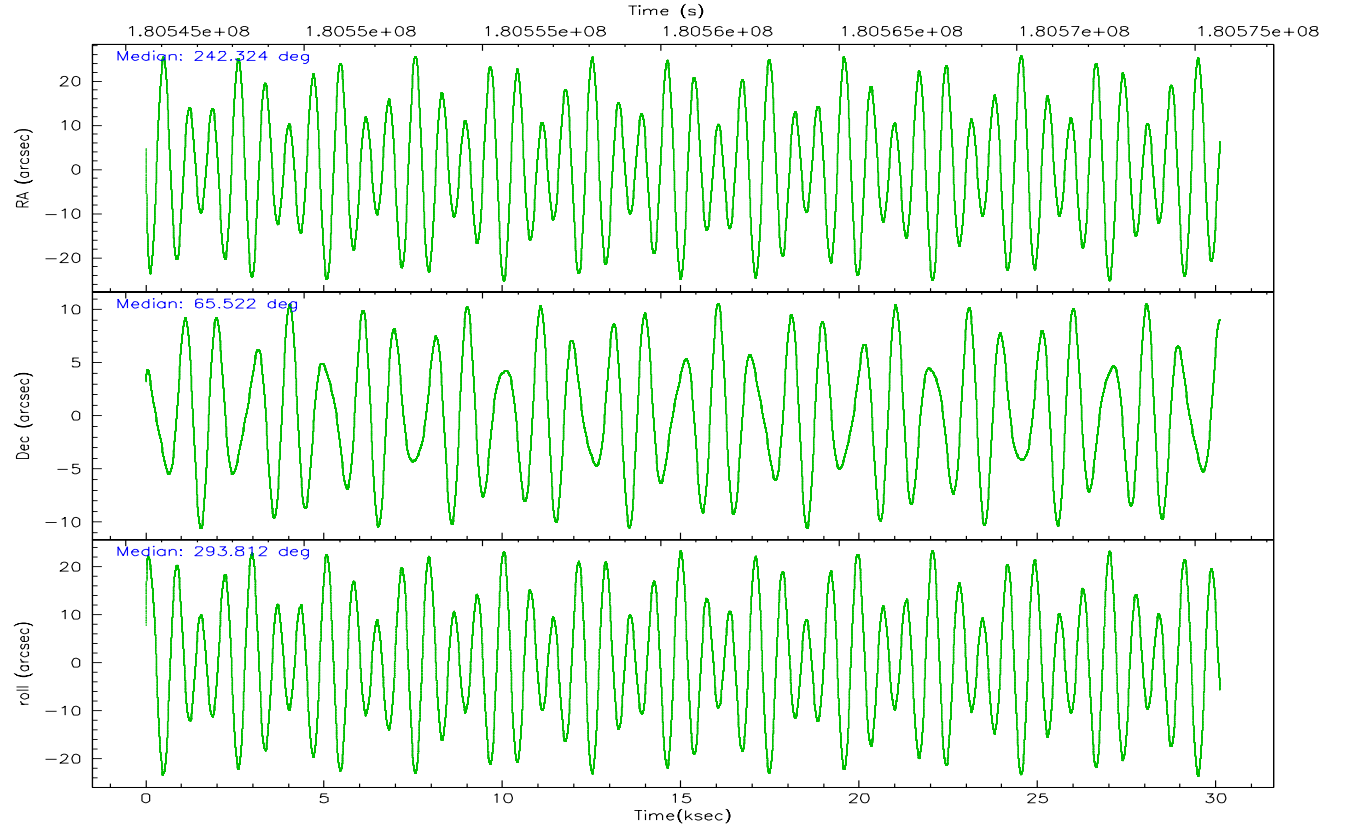
	ccd 2	ccd 3	ccd 5	ccd 6	ccd 7
grade 0 events	5887	5327	14264	6003	5166
	3%	3%	6%	3%	2%
grade 1 events	87	75	153	71	93
	0%	0%	0%	0%	0%
grade 2 events	3784	3249	33184	3640	19317
	2%	1%	14%	2%	10%
grade 3 events	1845	1895	2708	1989	4682
	1%	1%	1%	1%	2%
grade 4 events	1768	1820	2585	1912	4661
	1%	1%	1%	1%	2%
grade 5 events	5320	6405	11768	6546	13815
	3%	3%	5%	3%	7%
grade 6 events	2944	3139	59936	3582	44848
	1%	1%	26%	2%	24%
grade 7 events	149959	143275	105449	144263	93169
	87%	86%	45%	85%	50%

2.2 Compared Parameters

Parameter	Planned	Actual	Parameter	Planned	Actual
Instrument	ACIS	ACIS	Obspar format version number	6	6
Detector	ACIS-23567	ACIS-23567	Obspar file type	PREDICTED	ACTUAL
Grating	NONE	NONE	Obspar update status	NONE	UPDATED
Data mode	VFAINT	VFAINT	On-chip summing requested	N	N
Observation mode	POINTING	POINTING	Subarray requested	NONE	NONE
Pointing RA	242.271096	242.3246529858322	Alternating exposures requested	N	N
Pointing Dec	65.537547	65.52178614247933	Primary exposure time	0.000000	3.1
Pointing Roll	293.708961	293.8168394747069			
SIM focus pos (mm)	-0.684267	-0.6828225247311905			
SIM defocus (mm)	0	0.001444936568705701			
SIM translation stage pos (mm)	-190.132523	-190.1425803651734			
SIM translation stage offset (mm)	0	0.01005778216563158			
Observation start time	180545693.184000	180544297.0444			
Observation start date	2003-09-21T15:33:49	2003-09-21T15:11:37			
Observation end time	180575693.184000	180576159.68327			
Observation end date	2003-09-21T23:53:49	2003-09-22T00:02:39			
Read mode	TIMED	TIMED			

2.3 Aspect



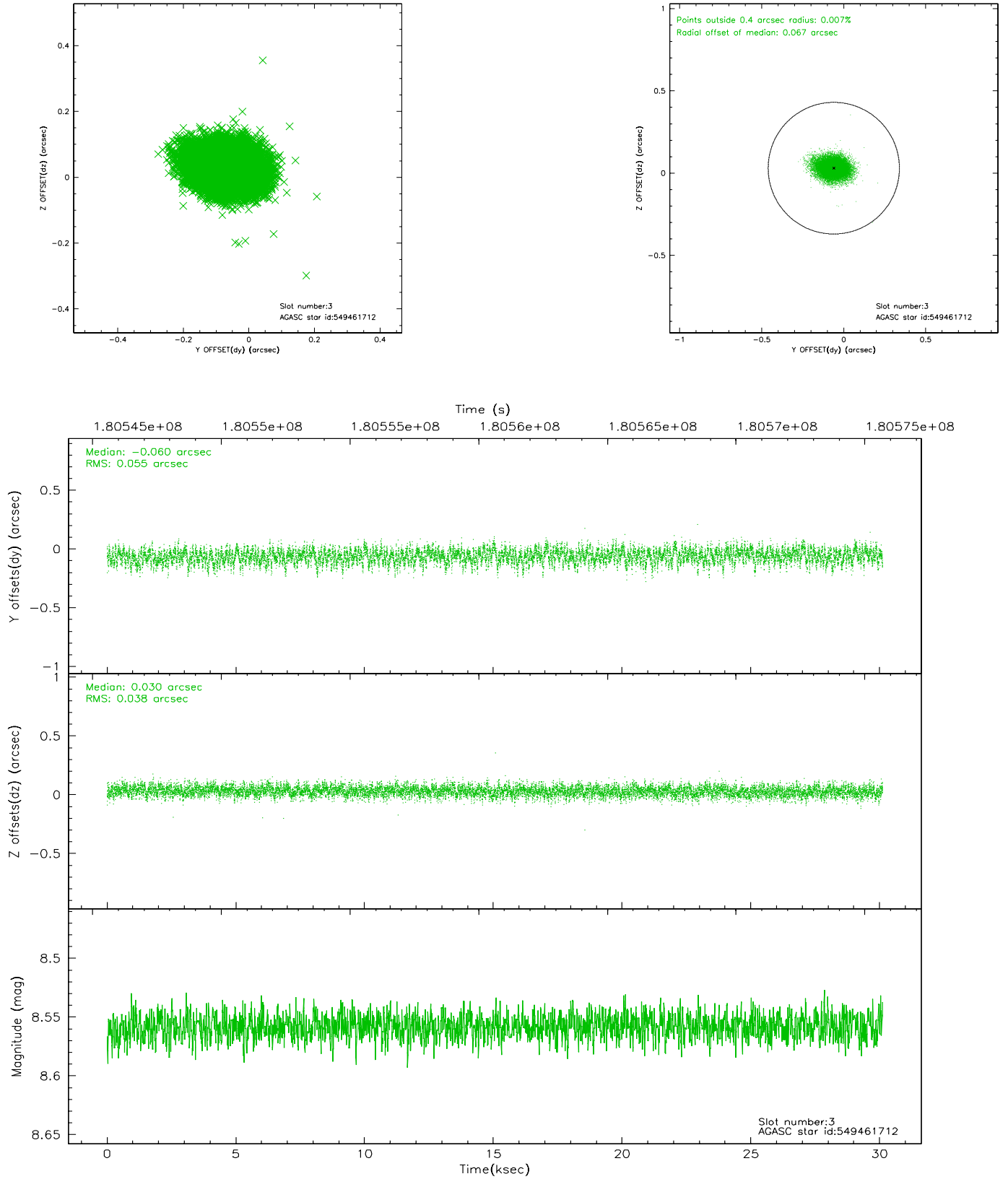


Slot Statistics

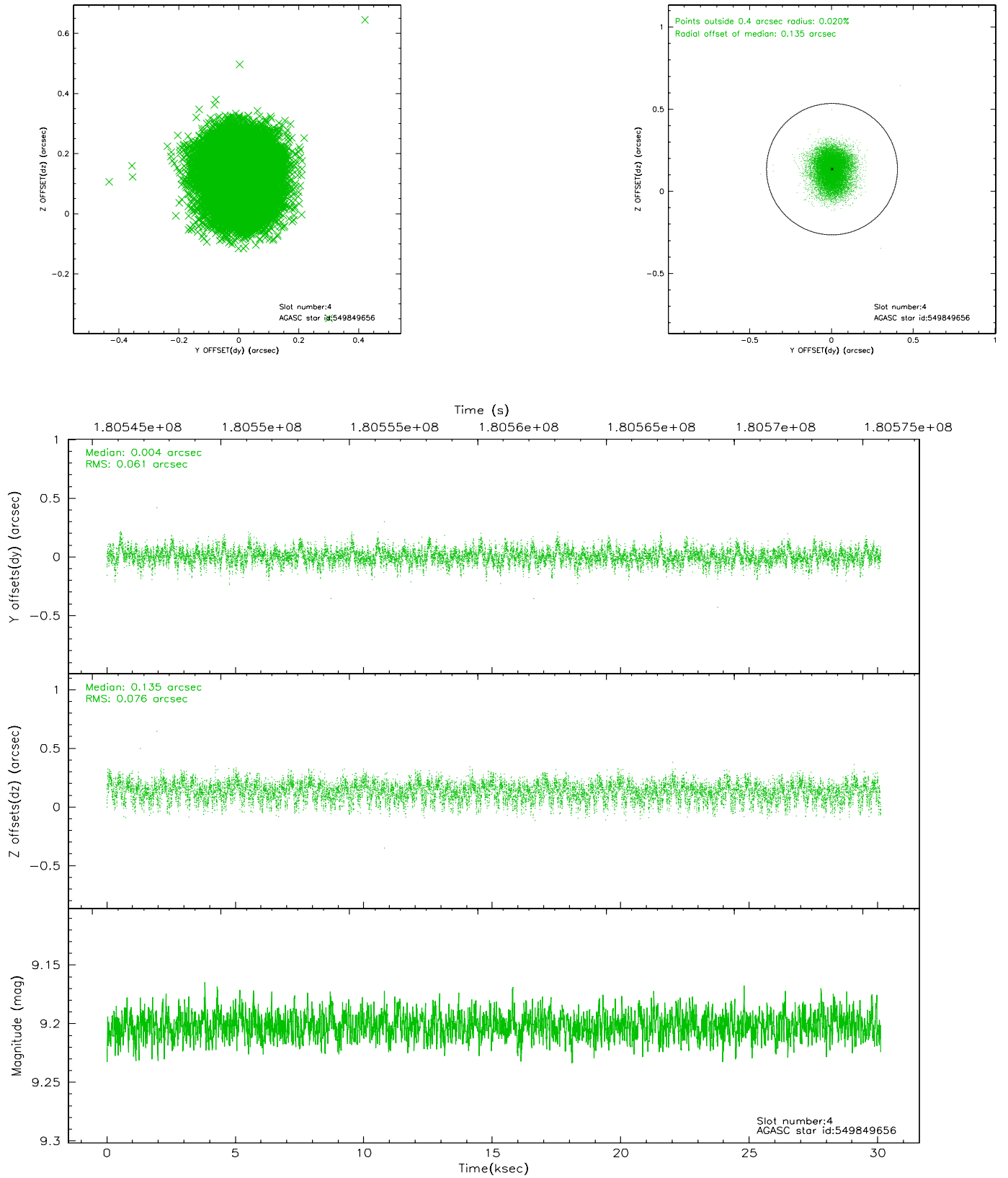
slot	status	id	mag	n_pts	med_dy	med_dz	dr1	dr2	ra	dec	mean_y	mean_z
0	FID	ACIS-S-2	7.10	7346	-0.042	-0.001	0.008	0.014	0.000000	0.000000	-758.90	-1730.77
1	FID	ACIS-S-4	7.20	7346	0.022	0.020	0.005	0.010	0.000000	0.000000	2154.40	177.67
2	FID	ACIS-S-5	7.23	7346	-0.012	-0.010	0.008	0.014	0.000000	0.000000	-1811.63	171.37
3	GUIDE	549461712	8.56	14687	-0.060	0.030	0.070	0.117	242.024311	64.836538	2158.56	-1359.82
4	GUIDE	549849656	9.20	14689	0.004	0.135	0.105	0.167	240.650889	65.694358	-1509.98	-1958.38
5	GUIDE	549855104	9.25	14680	0.115	-0.033	0.082	0.134	242.414078	65.829144	-875.36	615.14
6	GUIDE	549862784	8.90	14684	0.060	-0.146	0.105	0.164	243.335157	66.115006	-1291.73	2261.18
7	GUIDE	549859024	7.85	14692	-0.129	0.019	0.047	0.077	243.777882	65.072262	2427.62	1431.32

2.4 Star Slots

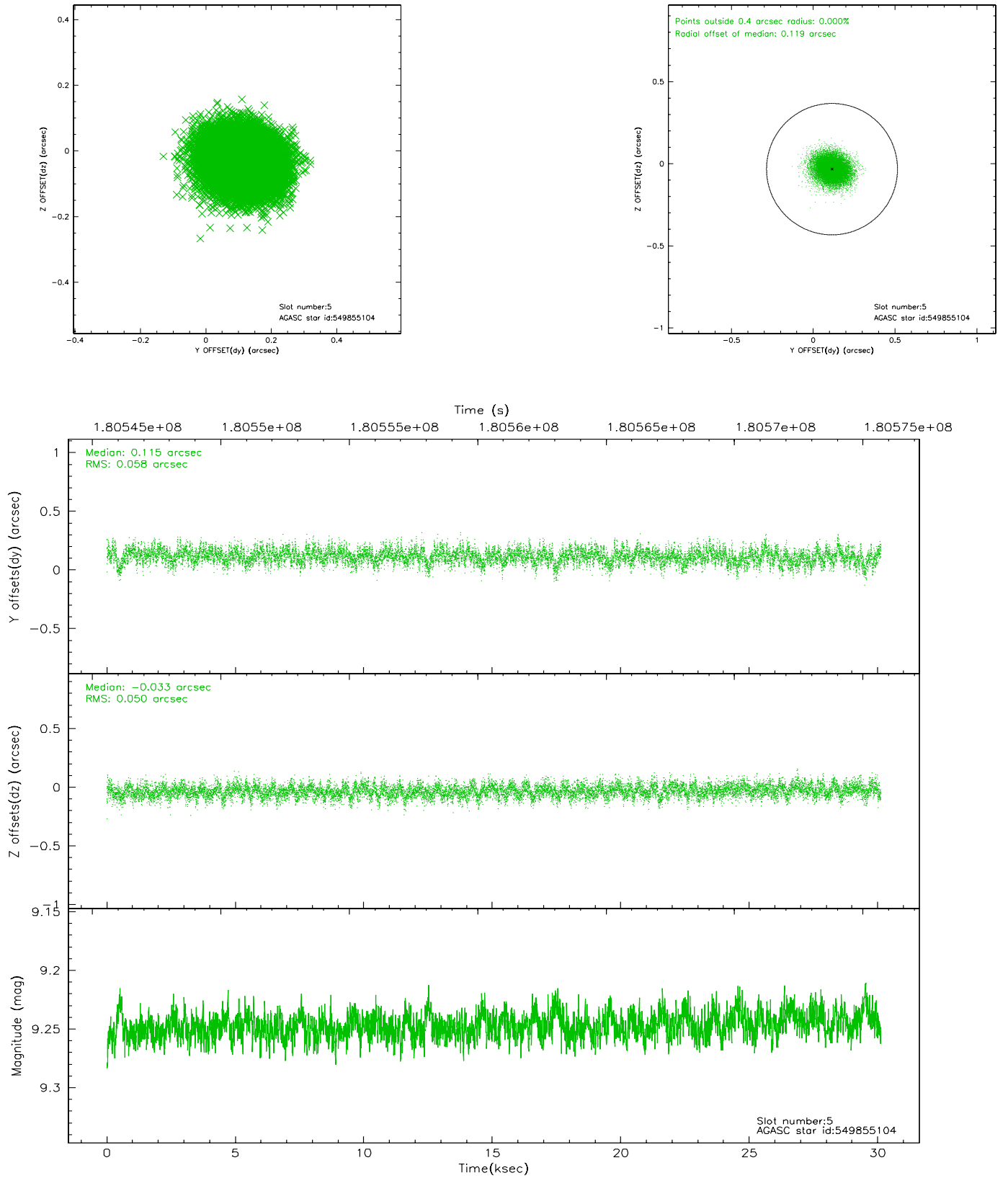
2.4.1 Slot 3



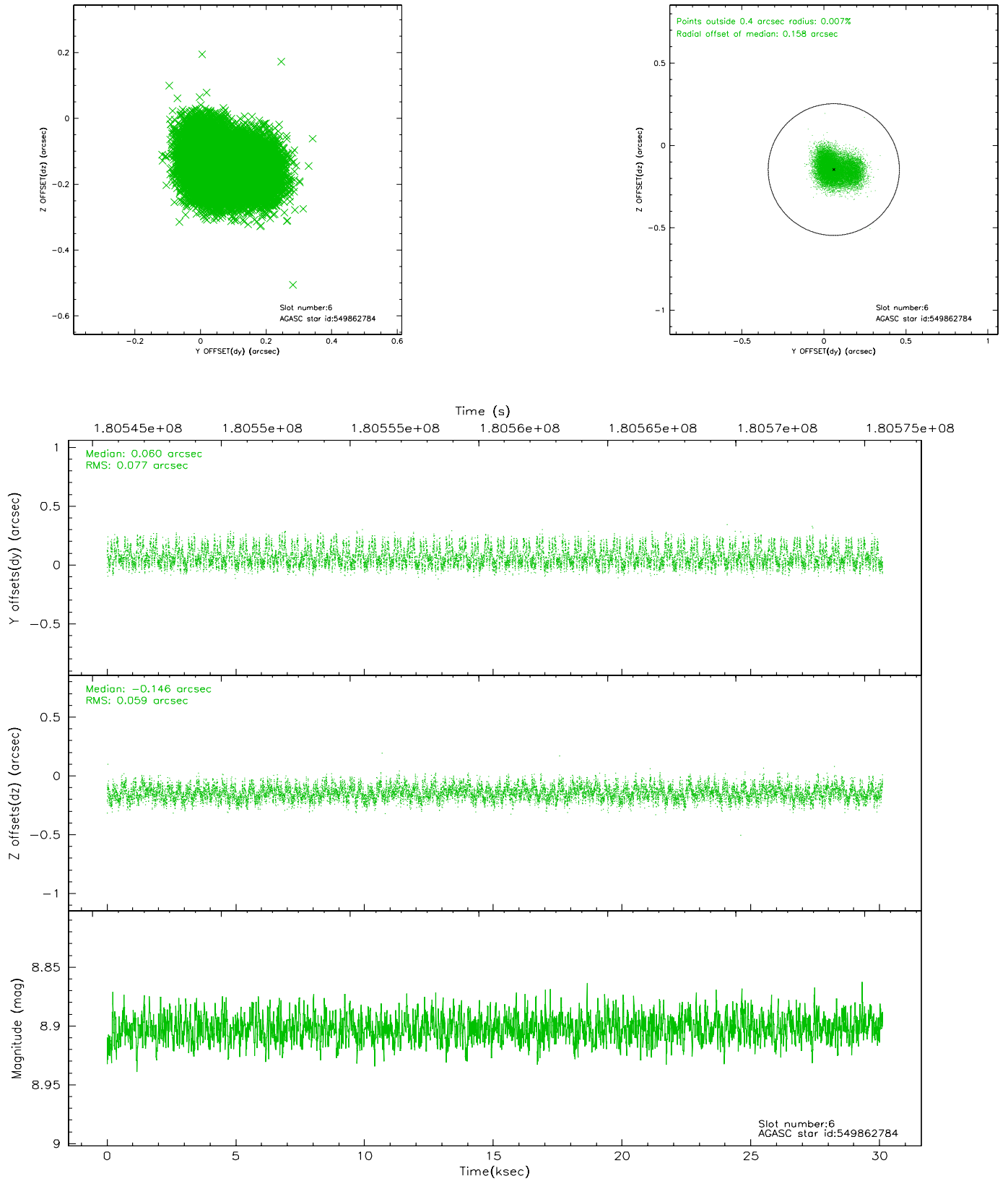
2.4.2 Slot 4



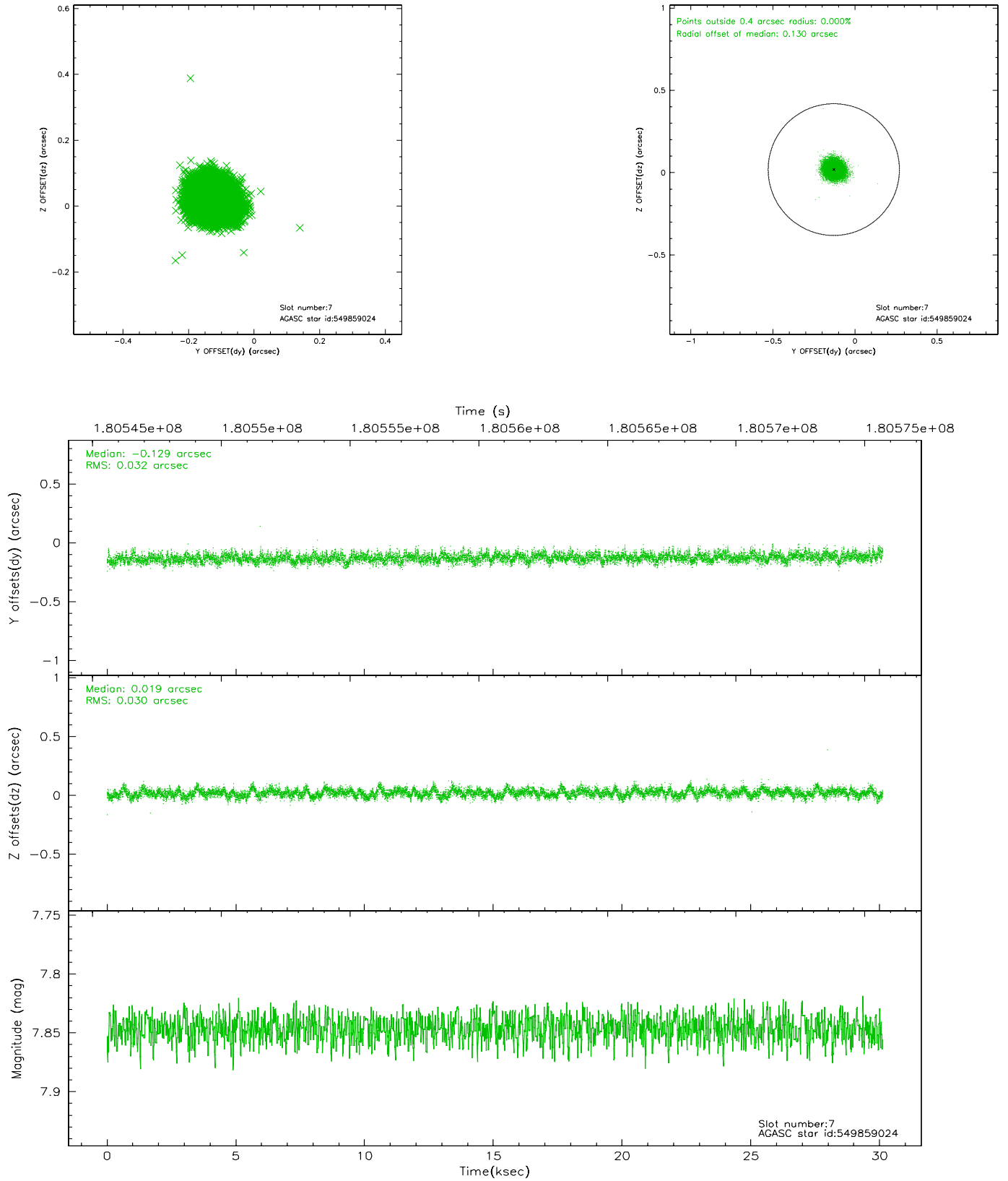
2.4.3 Slot 5



2.4.4 Slot 6

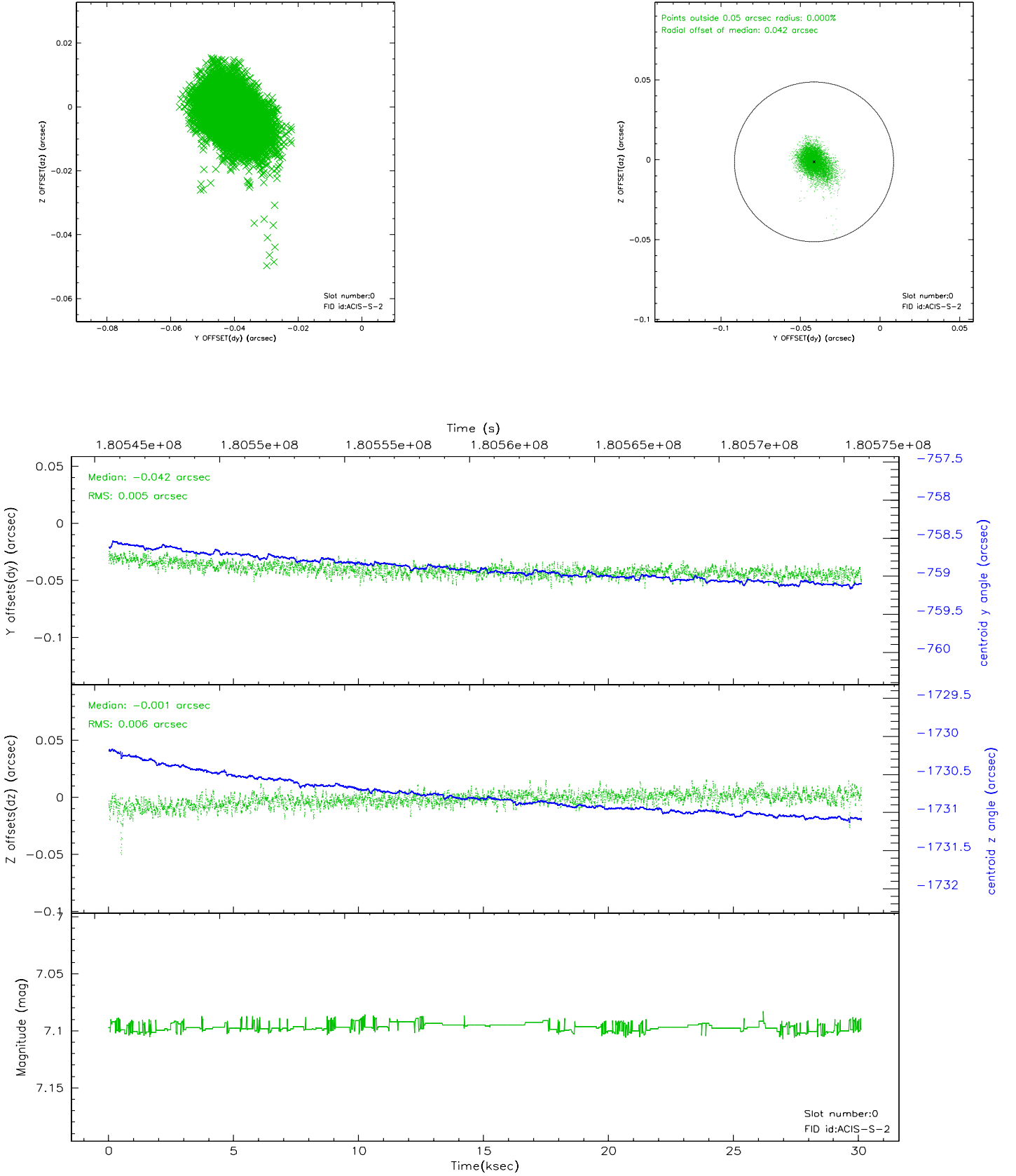


2.4.5 Slot 7

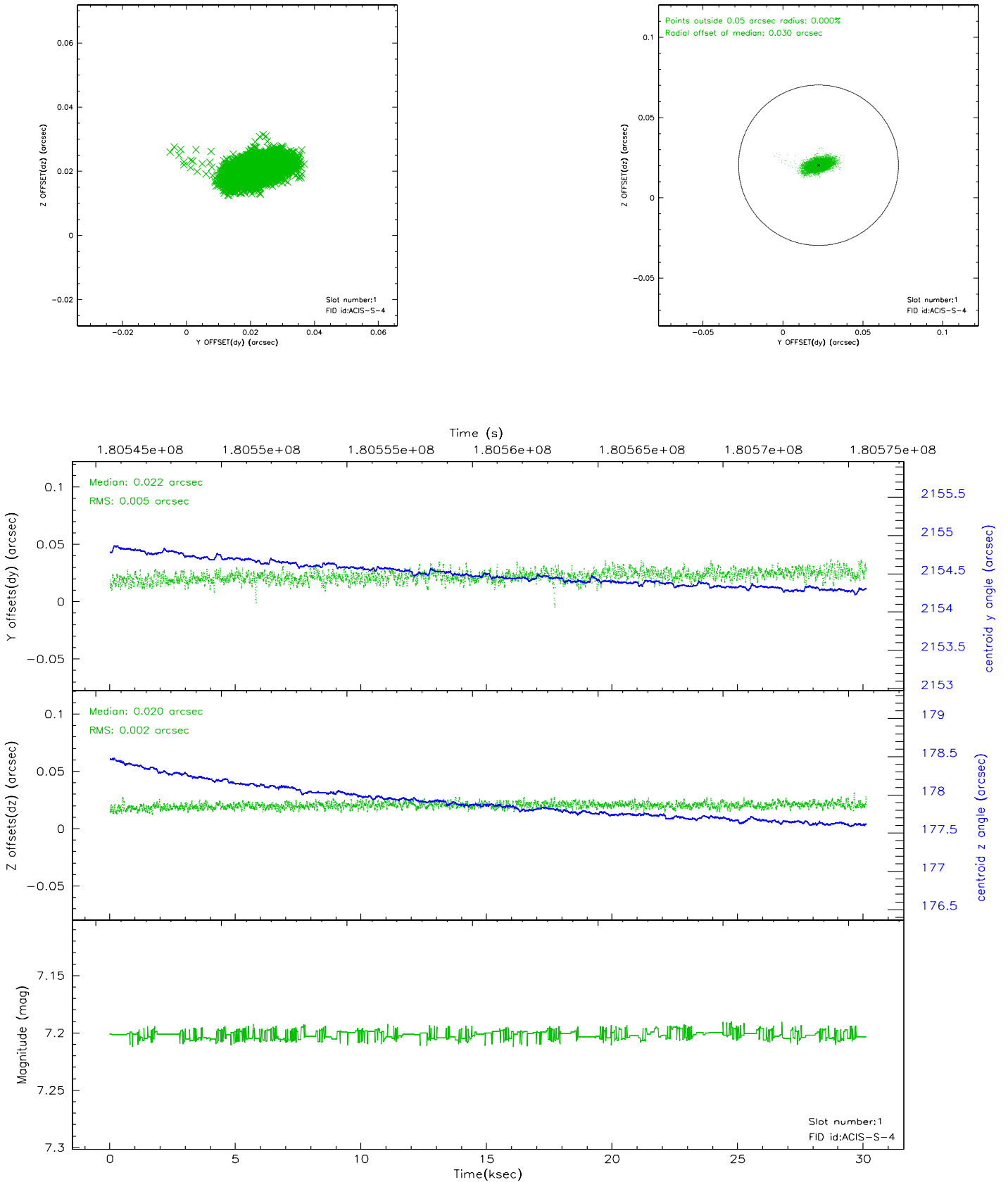


2.5 FID Slots

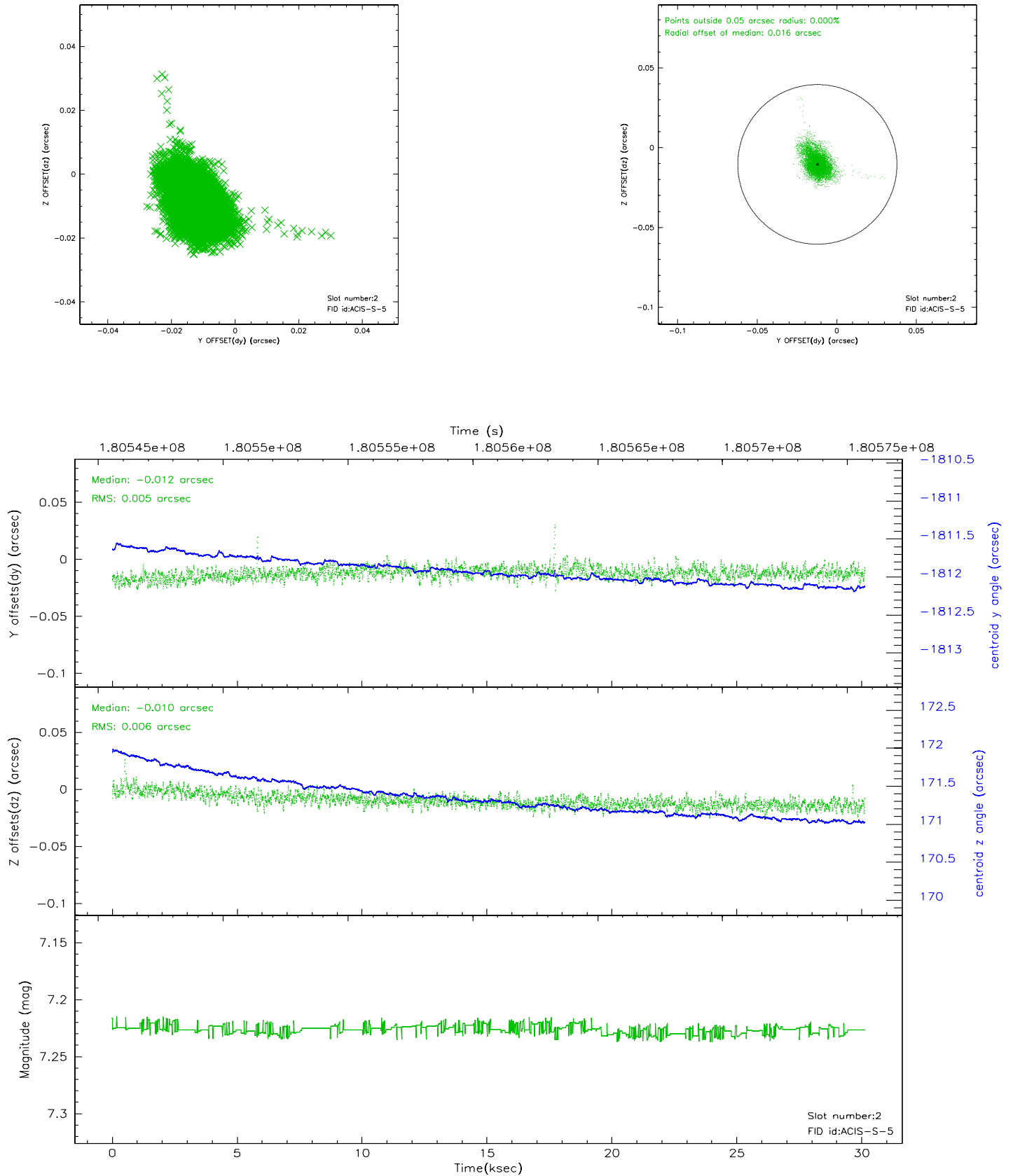
2.5.1 Slot 0



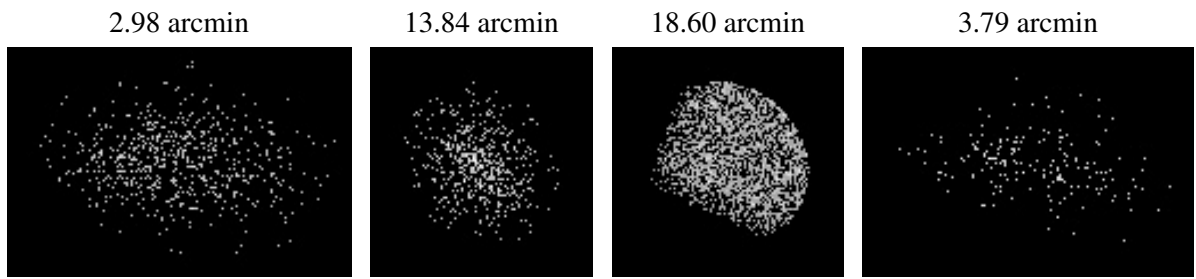
2.5.2 Slot 1



2.5.3 Slot 2



3 Point Sources



A Summary

A.1 Status

V&V Scientist	Beth Sundheim
V&V Date (YYYY-MM-DD)	2006.07.05
V&V Edition	1
V&V Disposition and Status	OK
V&V Charge Time	30.11

A.2 Comments