

V&V Reference Report

L2 ASCDS Version : 7.6.8.1

Observation 4437 - L2 Version 001
Chandra X-Ray Center

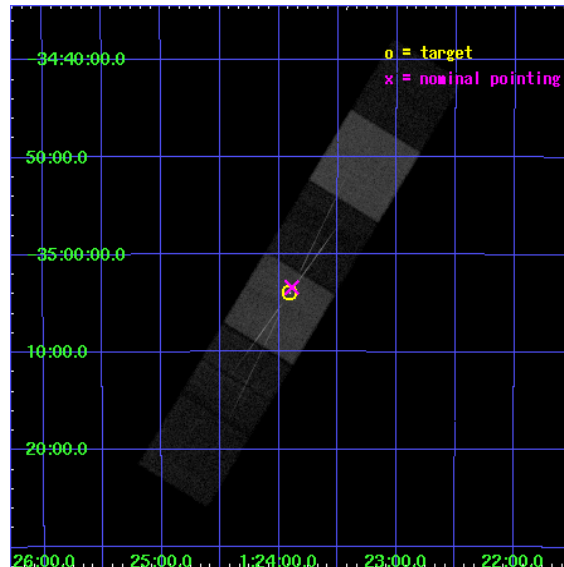
L2 Processing Date : Aug 8 2006

Contents

1	Front	2
2	OBI	3
2.1	OBI	3
2.1.1	Images	3
2.1.2	Bias	3
2.1.3	Parameters	4
2.1.4	Events	4
2.2	Compared Parameters	5
2.3	Aspect	6
2.4	Star Slots	9
2.4.1	Slot 3	9
2.4.2	Slot 4	10
2.4.3	Slot 5	11
2.4.4	Slot 6	12
2.4.5	Slot 7	13
2.5	FID Slots	14
2.5.1	Slot 0	14
2.5.2	Slot 1	15
2.5.3	Slot 2	16
3	Gratings	17
3.1	HEG Arm	17
3.2	MEG Arm	19
A	Summary	21
A.1	Status	21
A.2	Comments	21

1 Front

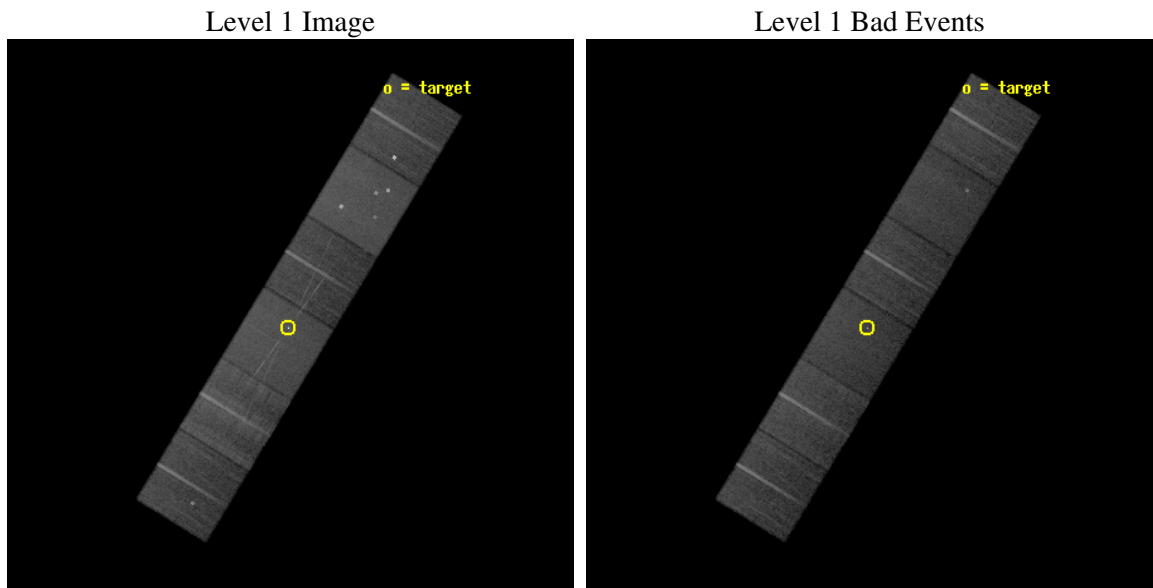
seq_num	700840
obs_id	4437
title	SIMULTANEOUS XMM-NEWTON AND CXO/HETGS OBSERVATIONS OF SEYFERT 1 GALAXIES
observer	Dr. Ian George
object	NGC 526A
dtcycle	0
cycle	P
ra_targ	20.976667
dec_targ	-35.065472
ra_nom	20.972423159233
dec_nom	-35.056482599384
roll_nom	121.3371776304
revision	3
ontime	29443.158939958
livetime	29070.331932918
ontime4	29443.15892002
ontime5	29443.158939958
ontime6	29443.15892002
ontime7	29443.158939958
ontime8	29443.15892002
ontime9	29443.15892002
l2events	271920



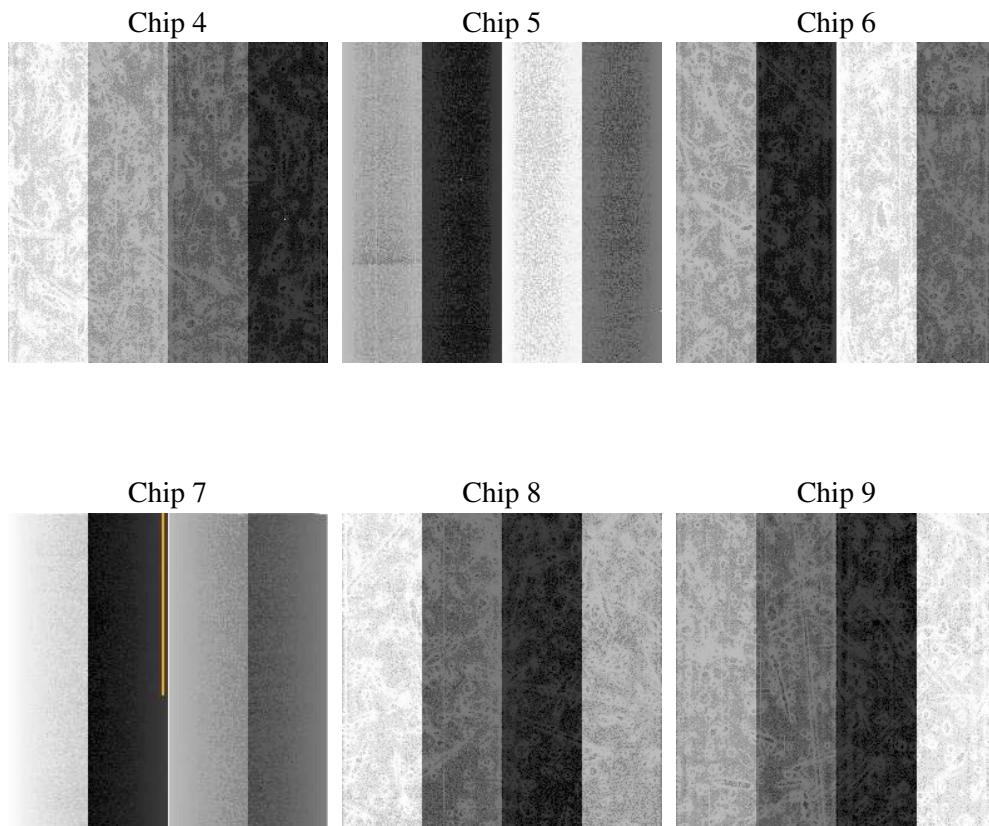
2 OBI

2.1 OBI

2.1.1 Images



2.1.2 Bias



2.1.3 Parameters

obi_num	0
ascdsver	7.6.8.1
caldsver	3.2.2
date	2006-08-08T23:10:11
revision	3

sched_exp_time	29317.000000
ontime	29496.359843522
ontime4	29496.359823585
ontime5	29496.359843522
ontime6	29496.359823585
ontime7	29496.359843522
ontime8	29496.359823585
ontime9	29496.359823585
l1events	1269843

2.1.4 Events

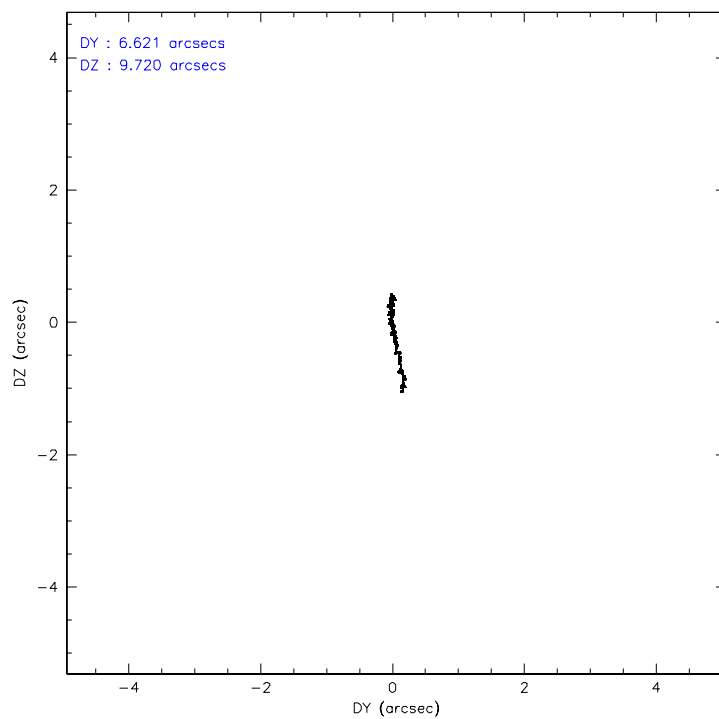
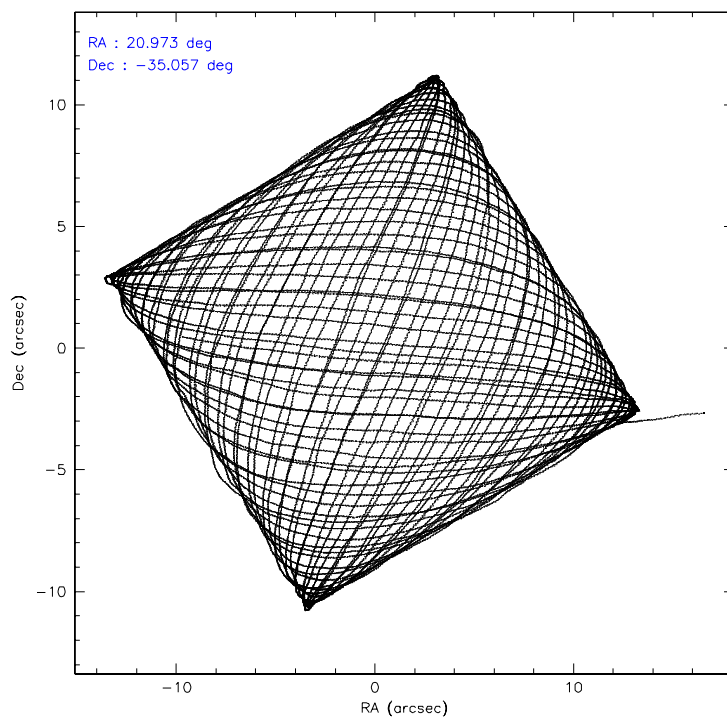
	ccd 4	ccd 5	ccd 6	ccd 7	ccd 8	ccd 9
level 1 events	198715	254755	174931	236916	233509	171017
rejected events	168277	141187	150820	142964	175236	148874
rejected %	84%	55%	86%	60%	75%	87%

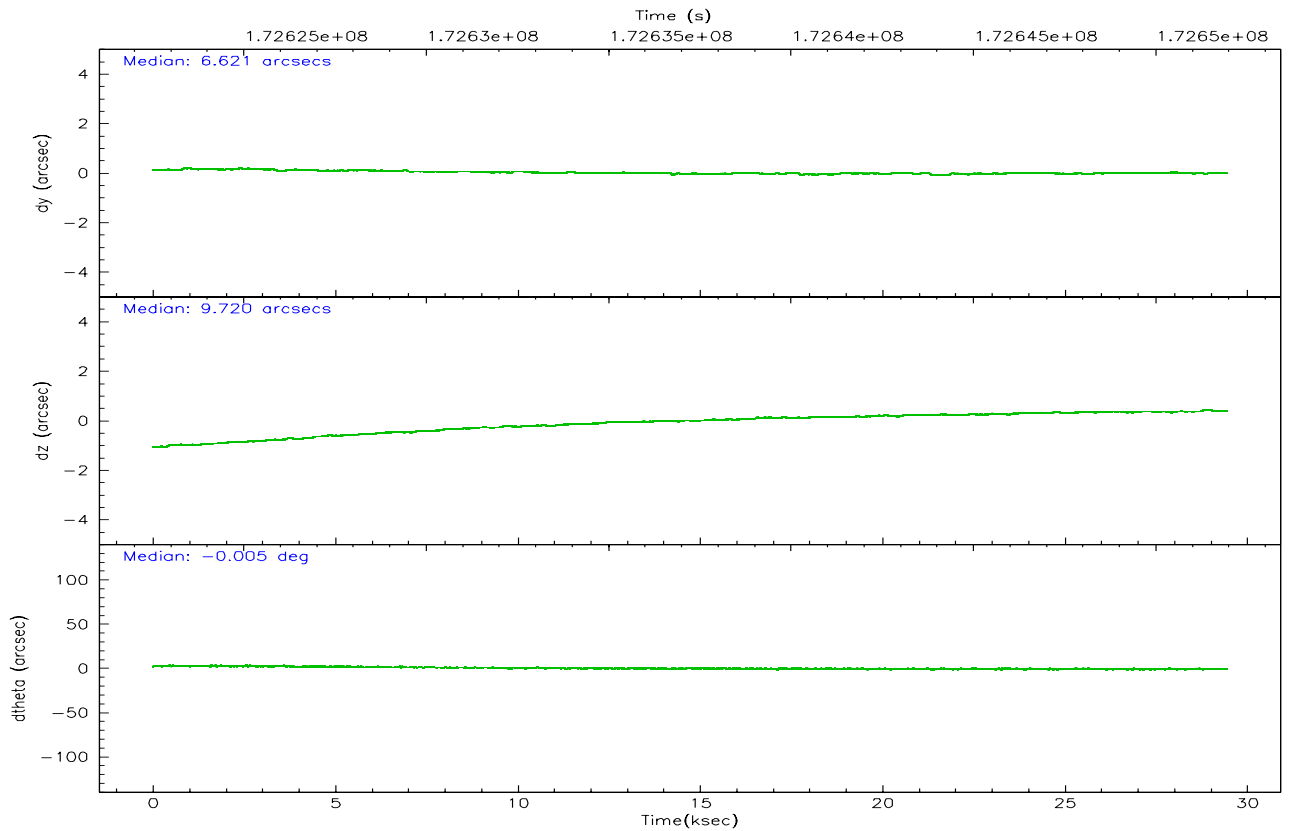
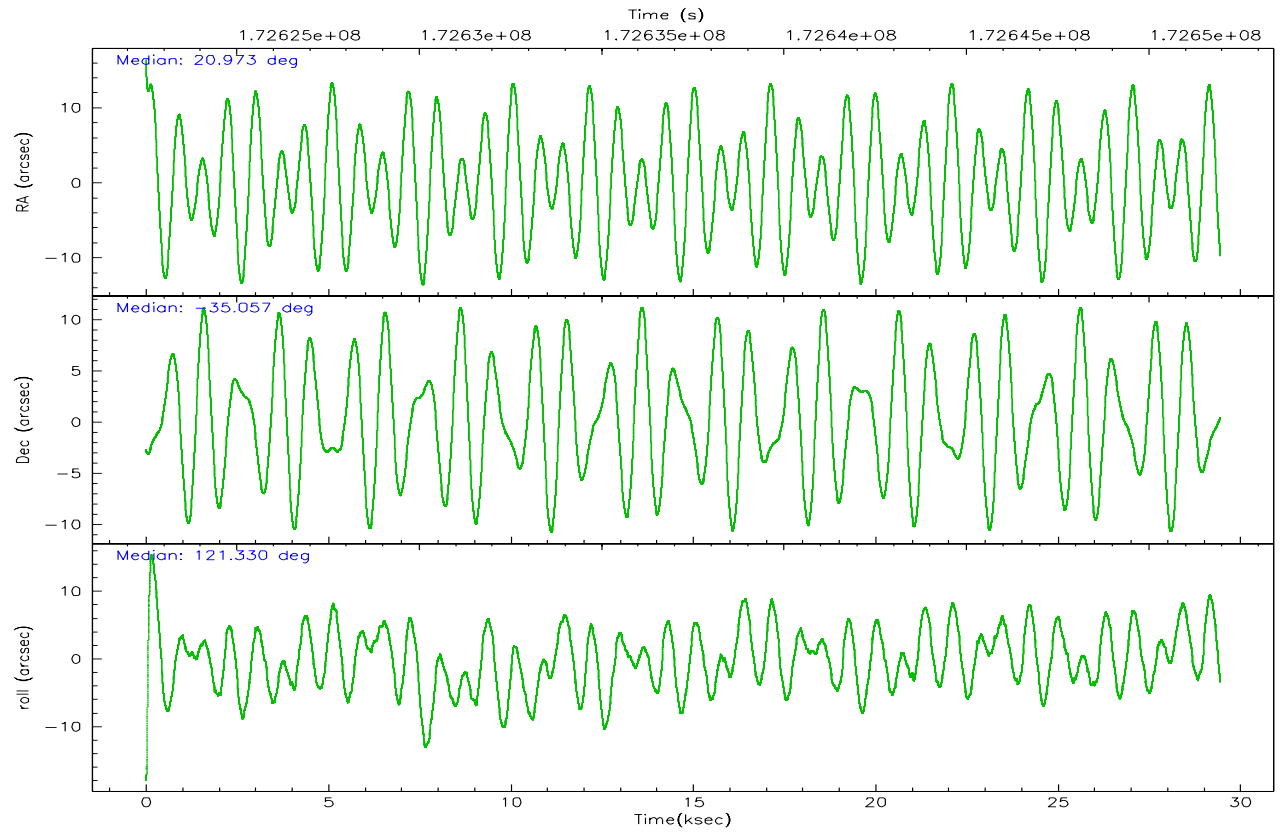
	ccd 4	ccd 5	ccd 6	ccd 7	ccd 8	ccd 9
grade 0 events	17880	13571	10737	6038	18374	9685
	8%	5%	6%	2%	7%	5%
grade 1 events	192	898	87	203	184	108
	0%	0%	0%	0%	0%	0%
grade 2 events	4852	33302	4800	23469	11499	4228
	2%	13%	2%	9%	4%	2%
grade 3 events	2172	2493	2152	5019	7168	2102
	1%	0%	1%	2%	3%	1%
grade 4 events	2121	2351	2140	4877	6542	2112
	1%	0%	1%	2%	2%	1%
grade 5 events	7401	11982	7949	15164	10087	7952
	3%	4%	4%	6%	4%	4%
grade 6 events	3459	62085	4334	54726	14771	4066
	1%	24%	2%	23%	6%	2%
grade 7 events	160638	128073	142732	127420	164884	140764
	80%	50%	81%	53%	70%	82%

2.2 Compared Parameters

Parameter	Planned	Actual	Parameter	Planned	Actual
Instrument	ACIS	ACIS	Obspar format version number	6	6
Detector	ACIS-456789	ACIS-456789	Obspar file type	PREDICTED	ACTUAL
Grating	HETG	HETG	Obspar update status	NONE	UPDATED
Data mode	FAINT	FAINT	On-chip summing requested	N	N
Observation mode	POINTING	POINTING	Subarray requested	NONE	NONE
Pointing RA	21.001797	20.97242315923346	Alternating exposures requested	N	N
Pointing Dec	-35.069194	-35.05648259938436	Primary exposure time	0.000000	3.2
Pointing Roll	121.197437	121.3371776304003			
SIM focus pos (mm)	-0.684267	-0.6828225247311905			
SIM defocus (mm)	0	0.001444936568705701			
SIM translation stage pos (mm)	-190.132523	-190.1425803651734			
SIM translation stage offset (mm)	0	0.01005778216563158			
Observation start time	172622637.184000	172621436.71857			
Observation start date	2003-06-21T22:42:53	2003-06-21T22:23:56			
Observation end time	172651954.184000	172652531.63239			
Observation end date	2003-06-22T06:51:30	2003-06-22T07:02:11			
Read mode	TIMED	TIMED			

2.3 Aspect



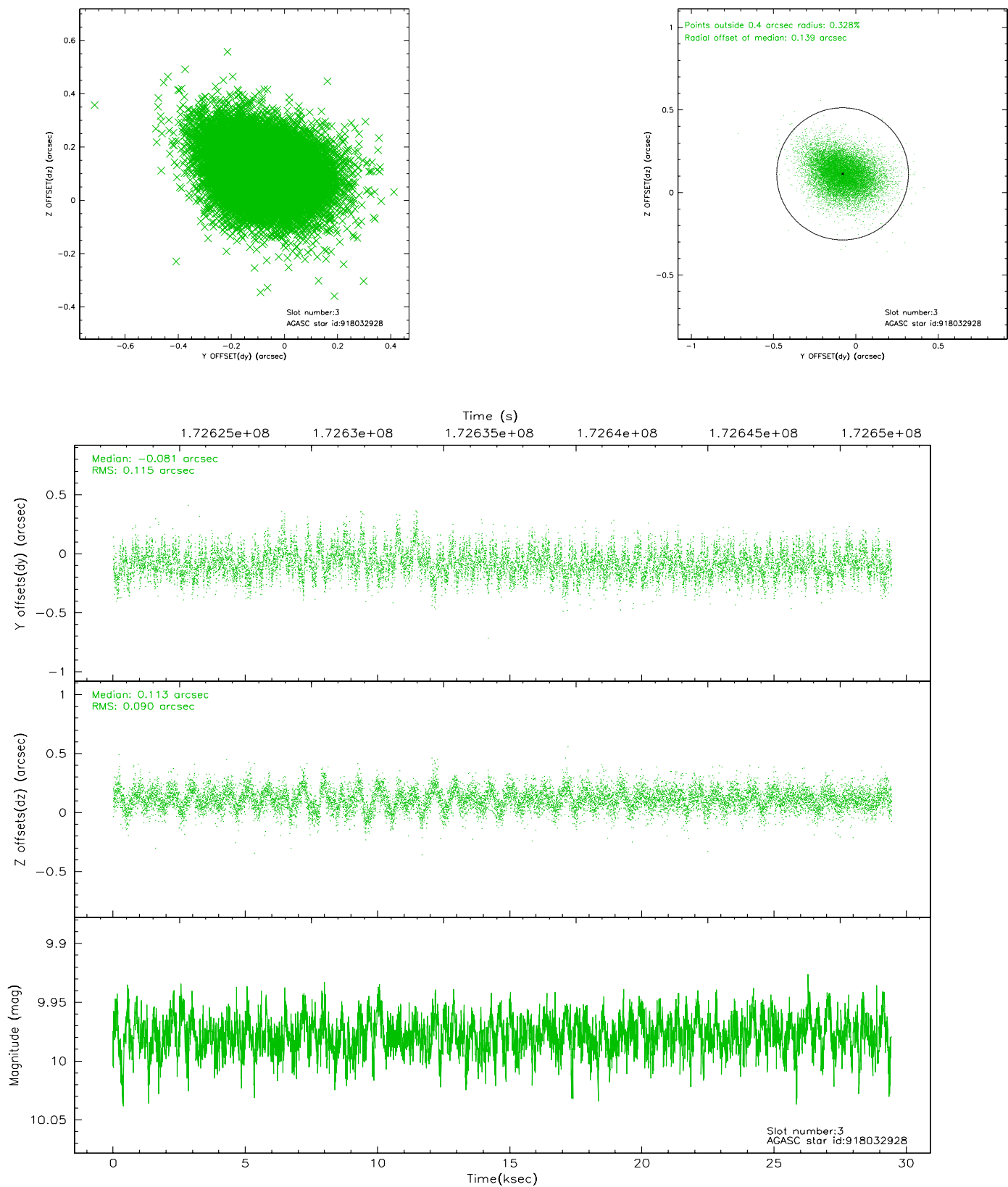


Slot Statistics

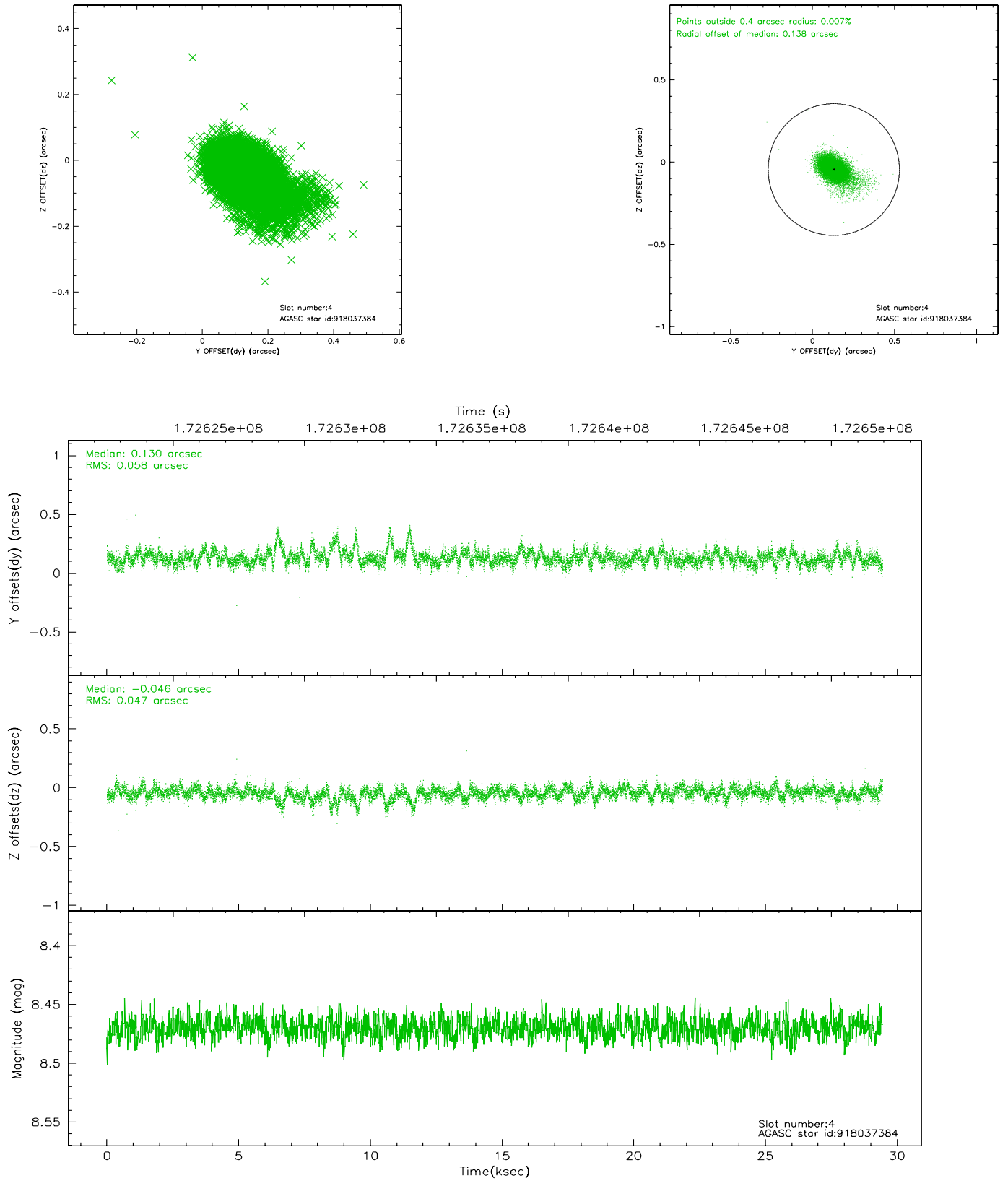
slot	status	id	mag	n_pts	med_dy	med_dz	dr1	dr2	ra	dec	mean_y	mean_z
0	FID	ACIS-S-2	7.10	7181	-0.039	0.000	0.013	0.026	0.000000	0.000000	-759.40	-1730.81
1	FID	ACIS-S-4	7.20	7182	0.017	0.018	0.006	0.012	0.000000	0.000000	2153.87	177.65
2	FID	ACIS-S-5	7.23	7182	-0.010	-0.011	0.012	0.025	0.000000	0.000000	-1812.15	171.33
3	GUIDE	918032928	9.98	14348	-0.081	0.113	0.152	0.257	21.260186	-34.205232	2261.47	-2267.83
4	GUIDE	918037384	8.47	14366	0.130	-0.046	0.071	0.138	20.982960	-35.723099	-1984.81	1266.35
5	GUIDE	918041544	10.03	14348	-0.065	0.058	0.154	0.243	20.868409	-34.646803	1505.11	-449.16
6	GUIDE	918041624	7.96	14365	-0.171	-0.096	0.066	0.117	20.656436	-34.992038	763.65	728.86
7	GUIDE	918043888	10.16	14351	0.195	-0.043	0.143	0.480	21.077642	-35.703353	-2067.41	992.73

2.4 Star Slots

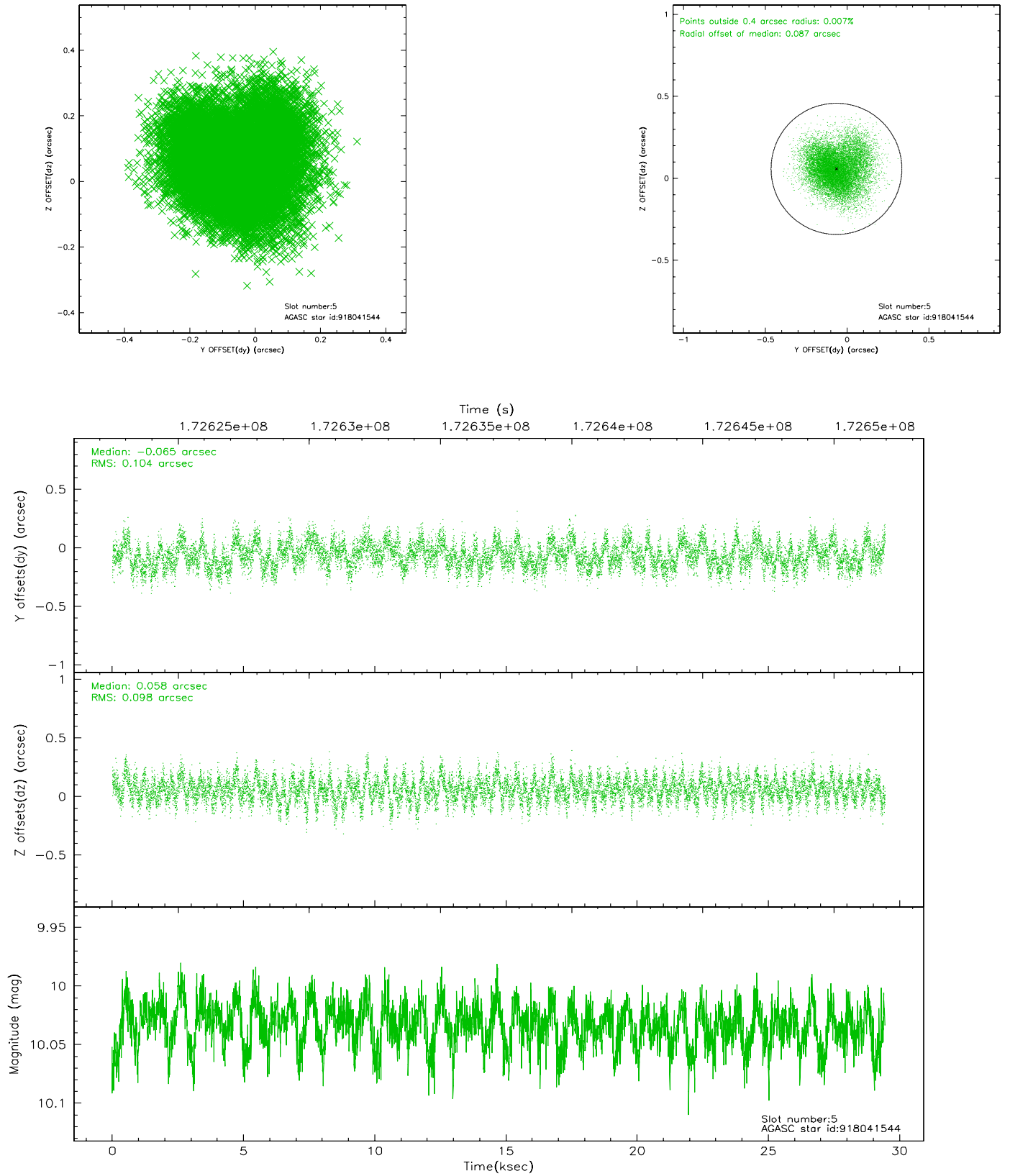
2.4.1 Slot 3



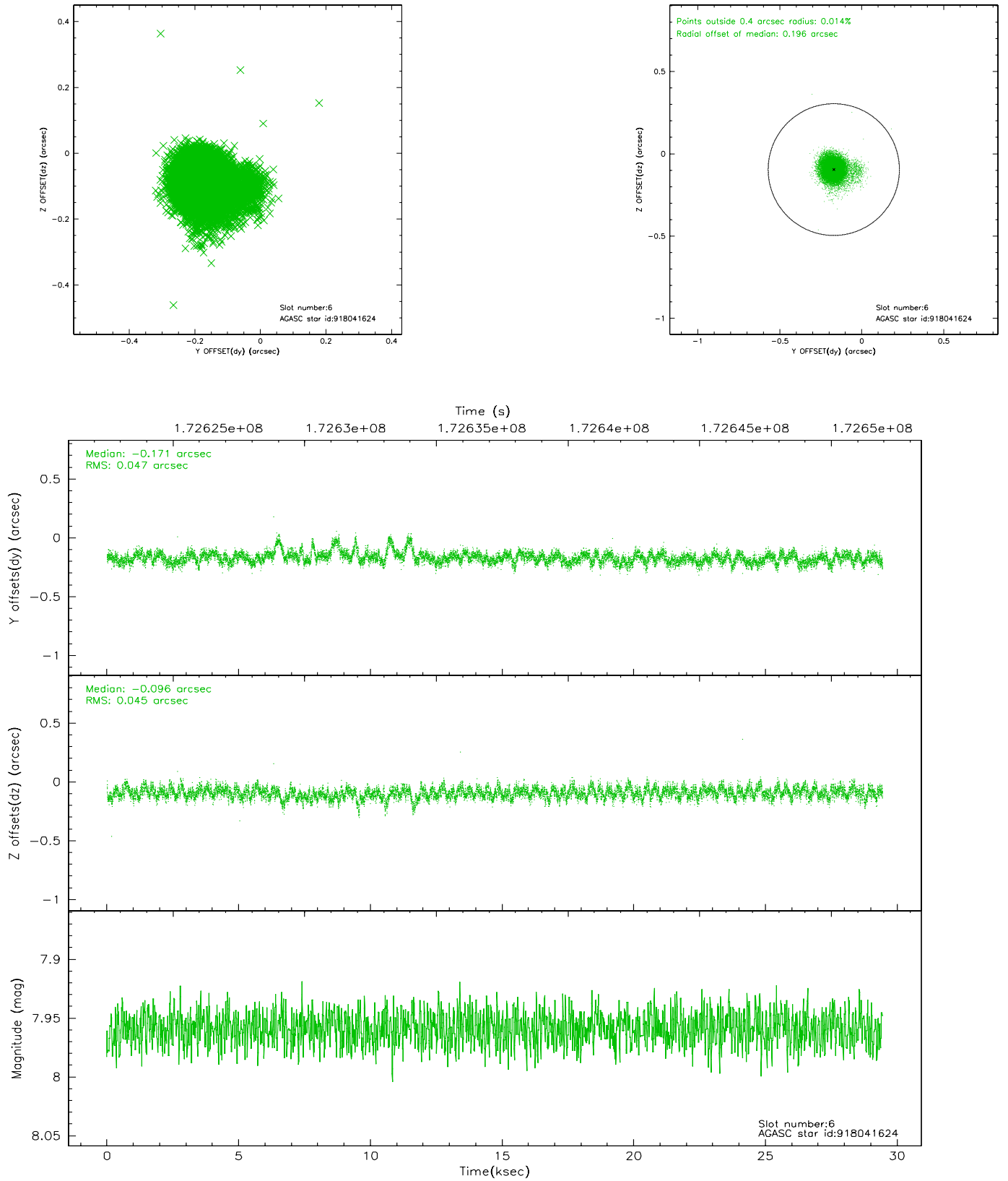
2.4.2 Slot 4



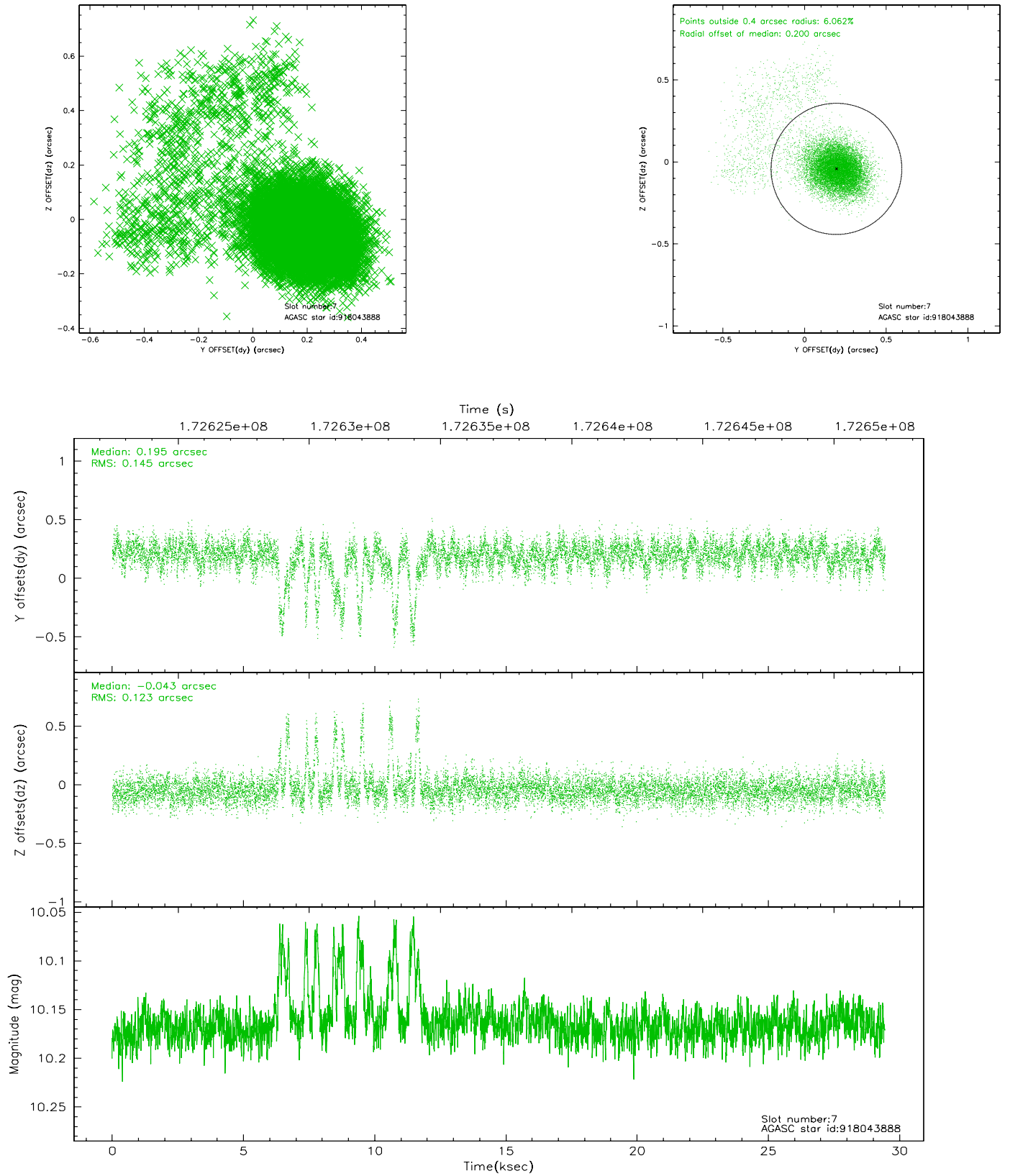
2.4.3 Slot 5



2.4.4 Slot 6

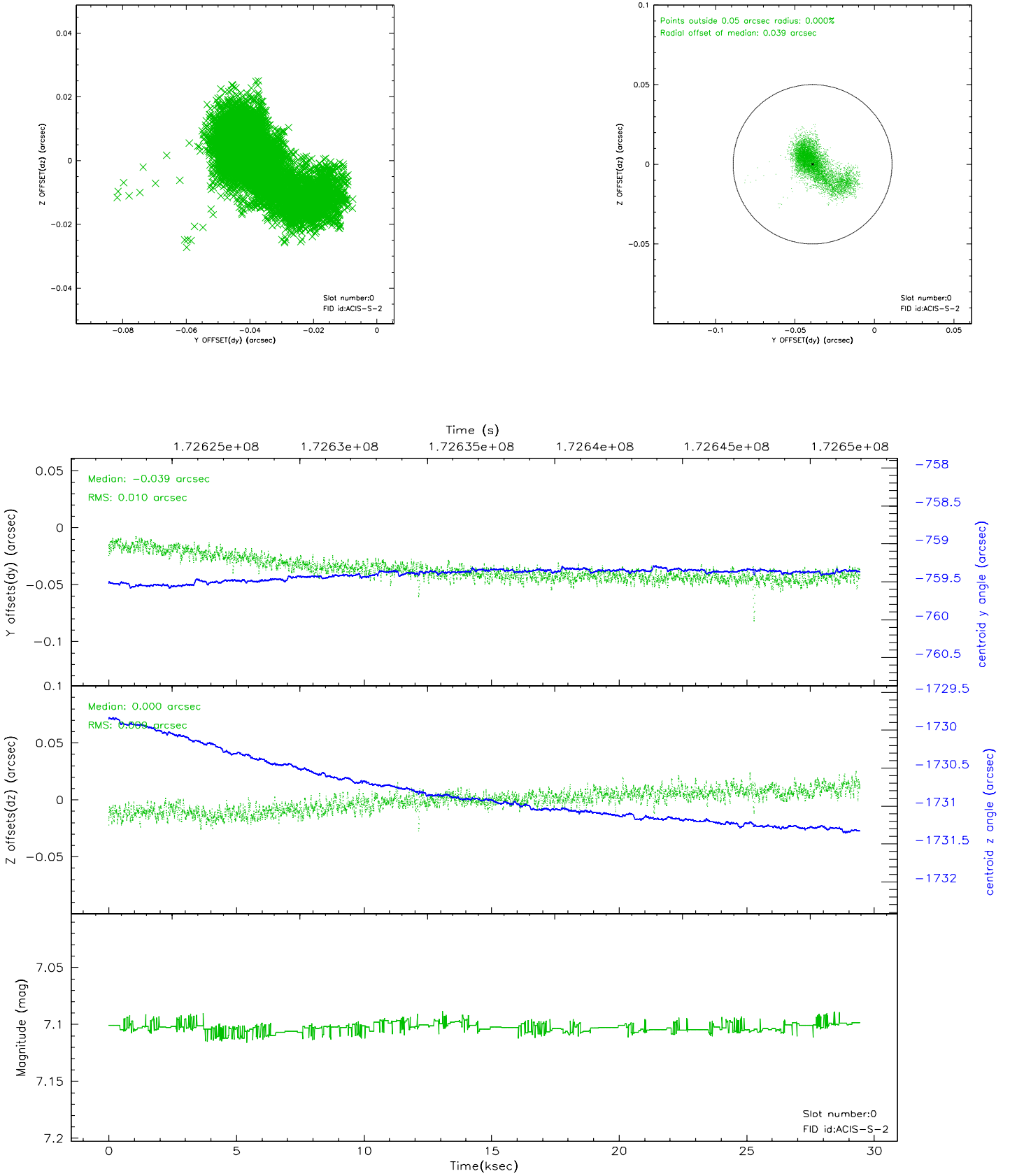


2.4.5 Slot 7

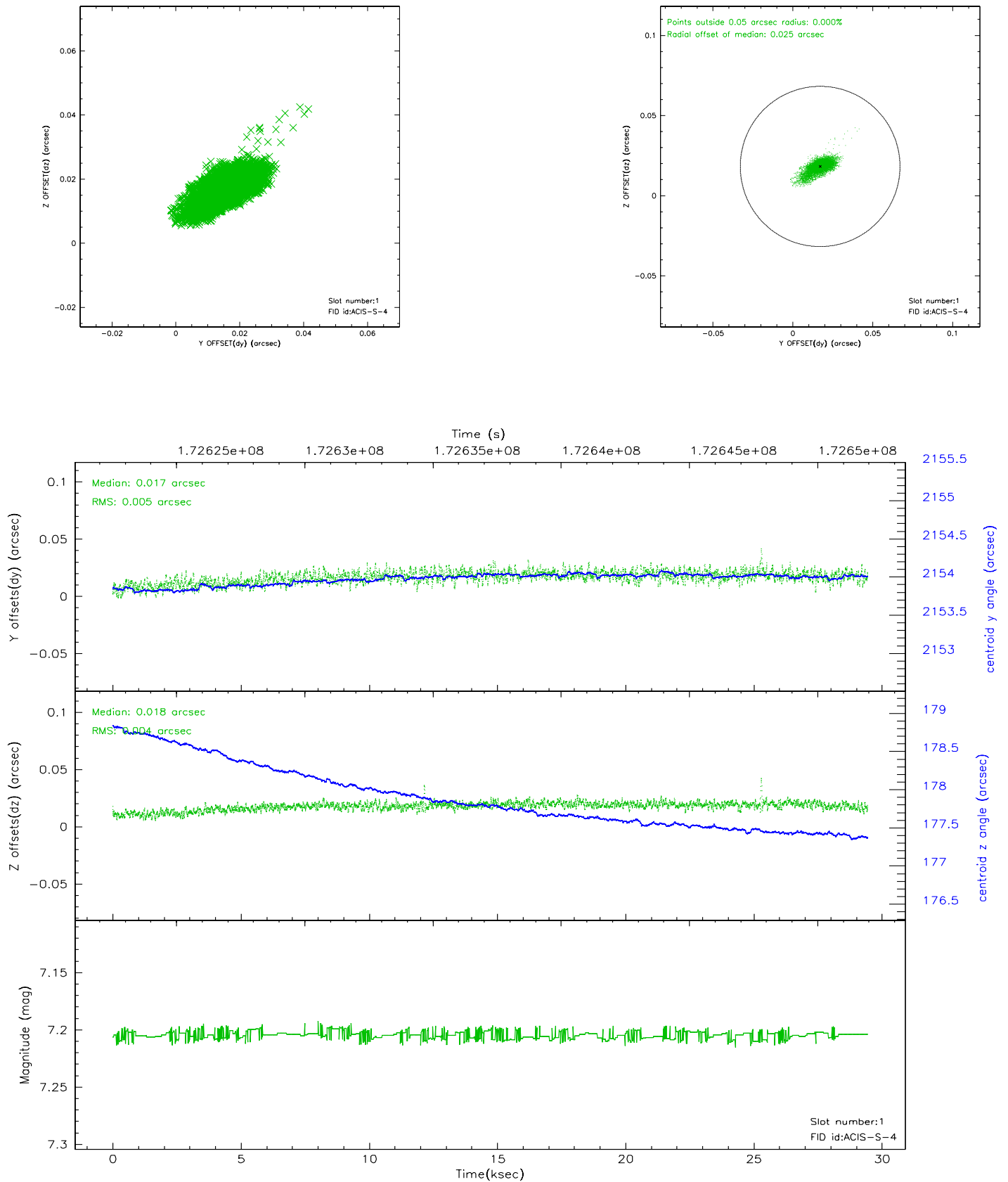


2.5 FID Slots

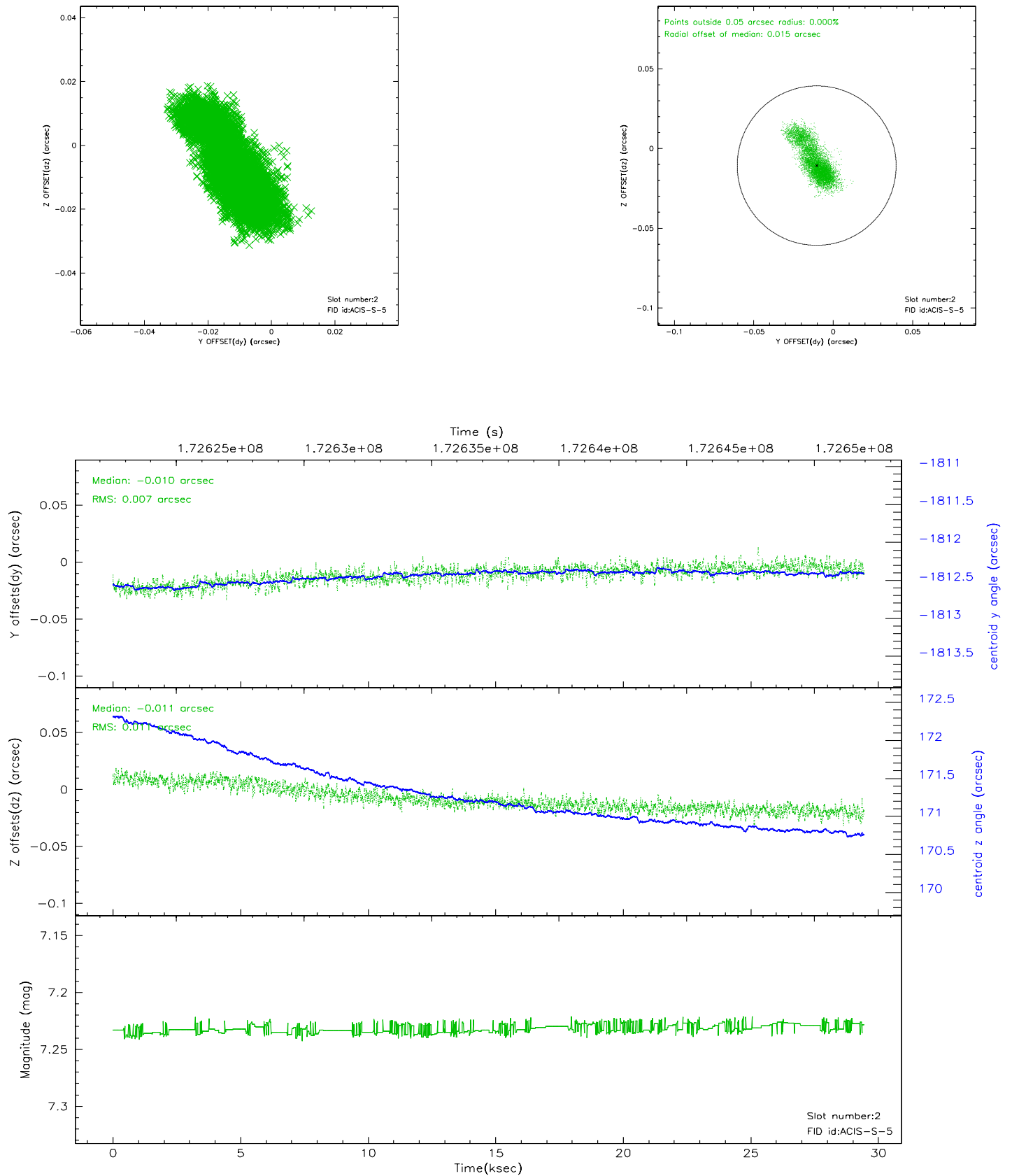
2.5.1 Slot 0



2.5.2 Slot 1



2.5.3 Slot 2



3 Gratings

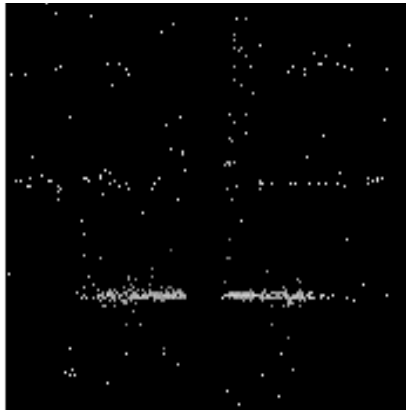
3.1 HEG Arm



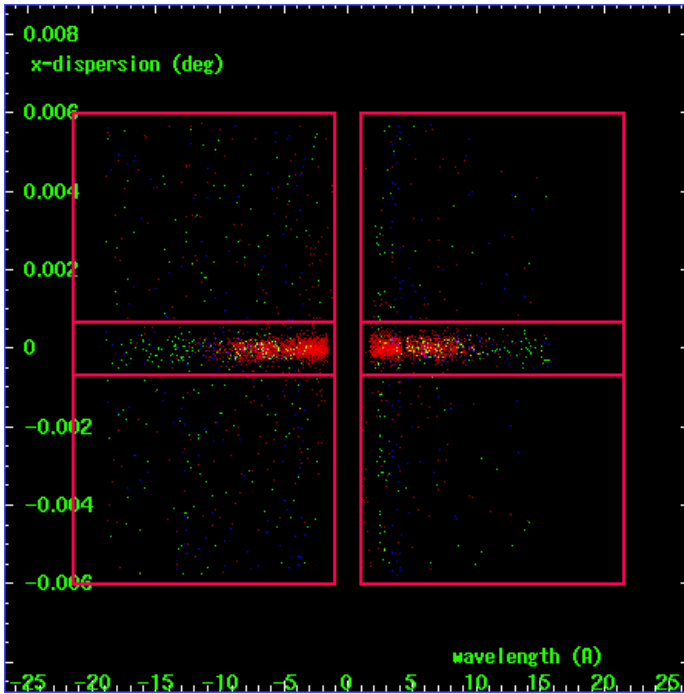
HEG Order Sort 123



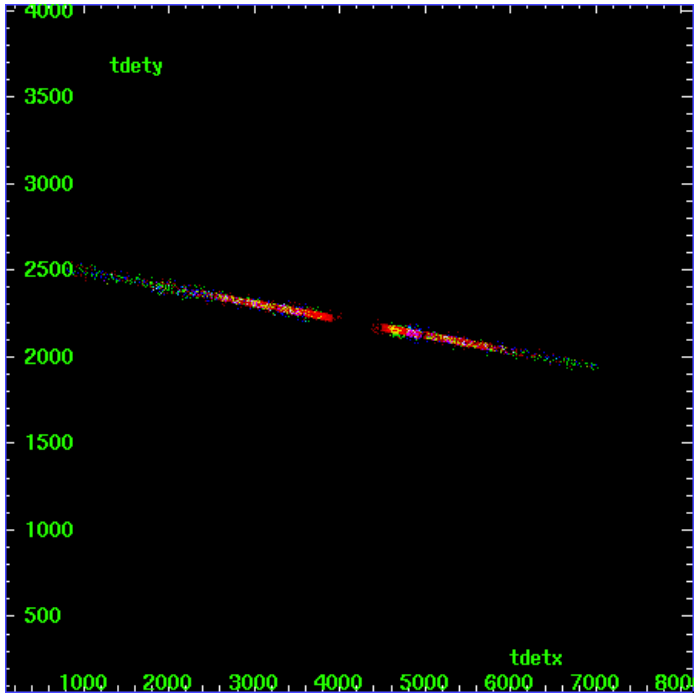
HEG Zero Order



HEG Order Sort ALL

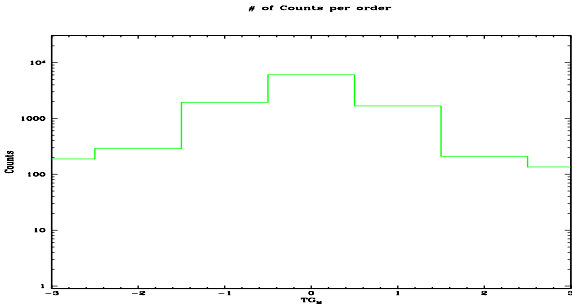


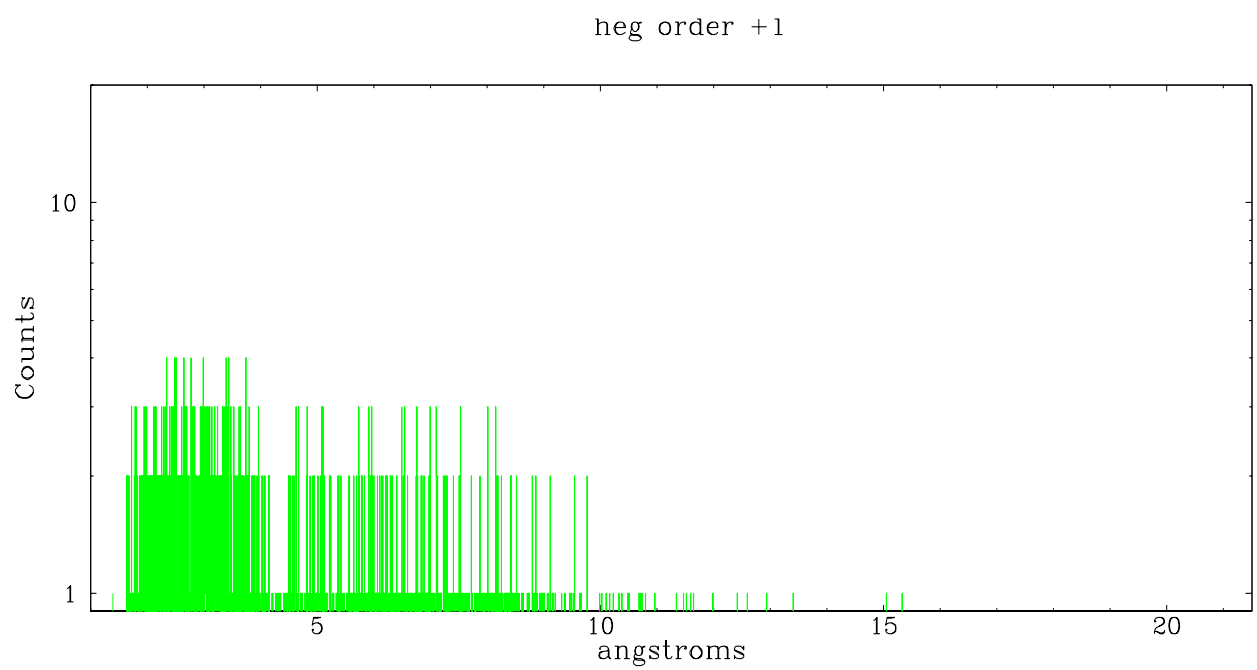
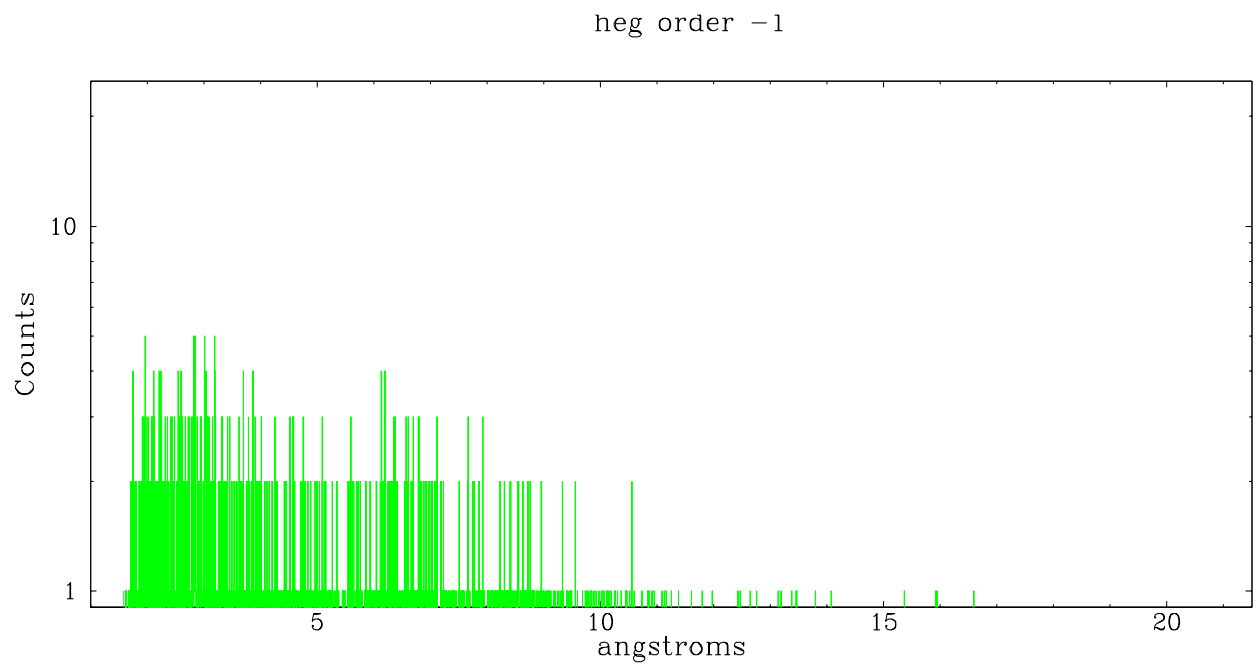
Spot Image HEG



Full Detector HEG

	order -3	order -2	order -1	order 0	order 1	order 2	order 3
Events	188	291	1938	6070	1675	210	135

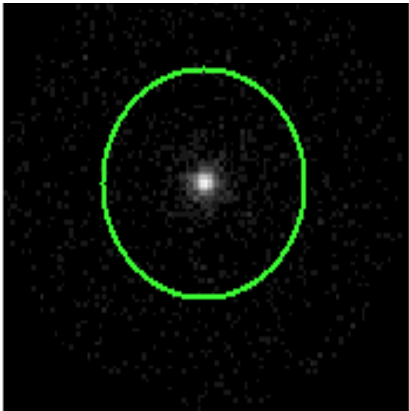




3.2 MEG Arm



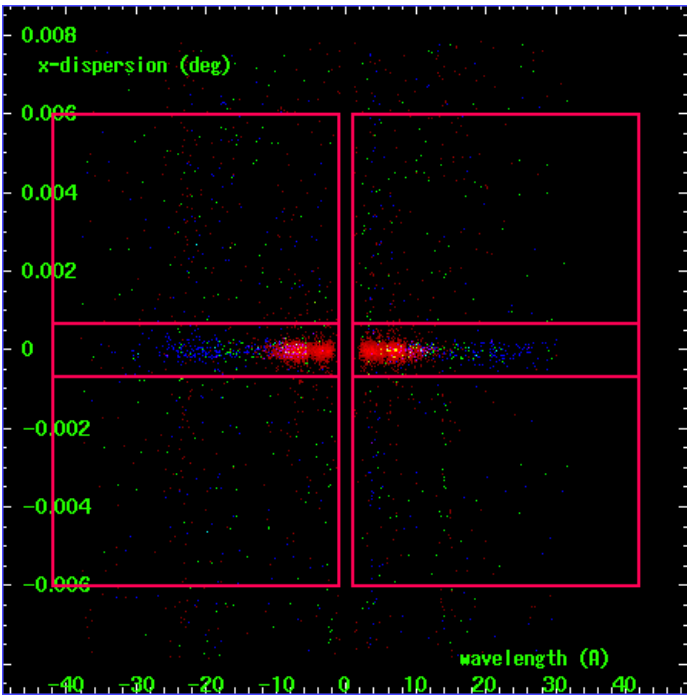
MEG Order Sort 123



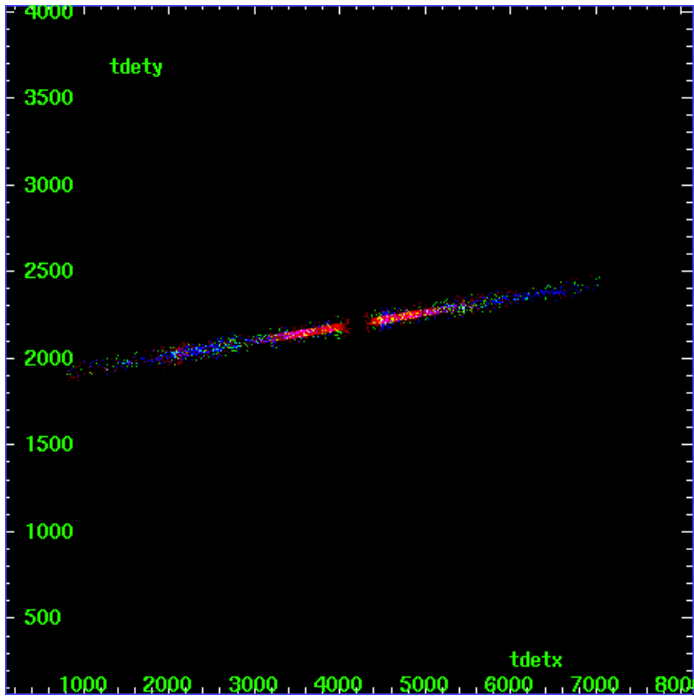
MEG Zero Order



MEG Order Sort ALL

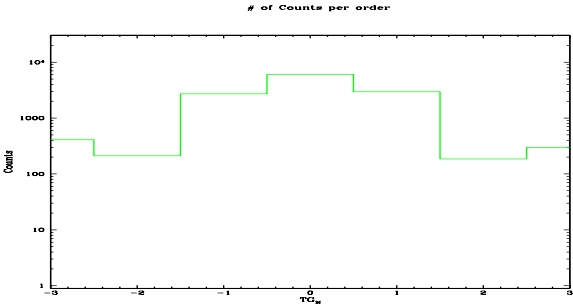


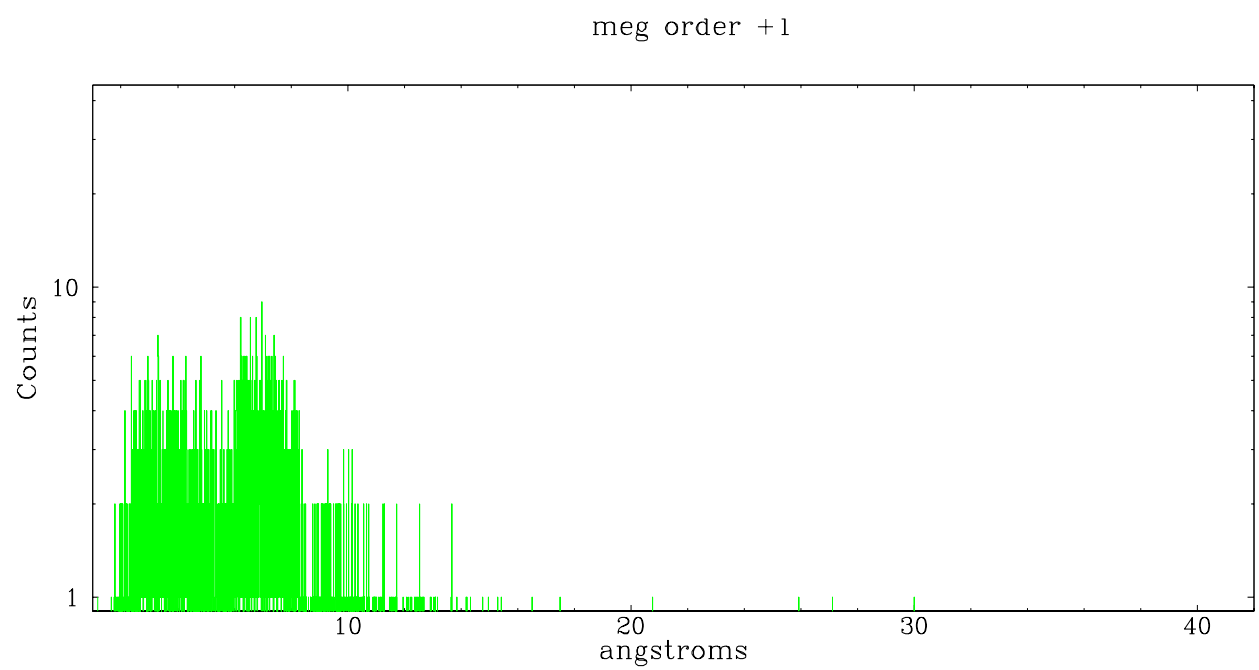
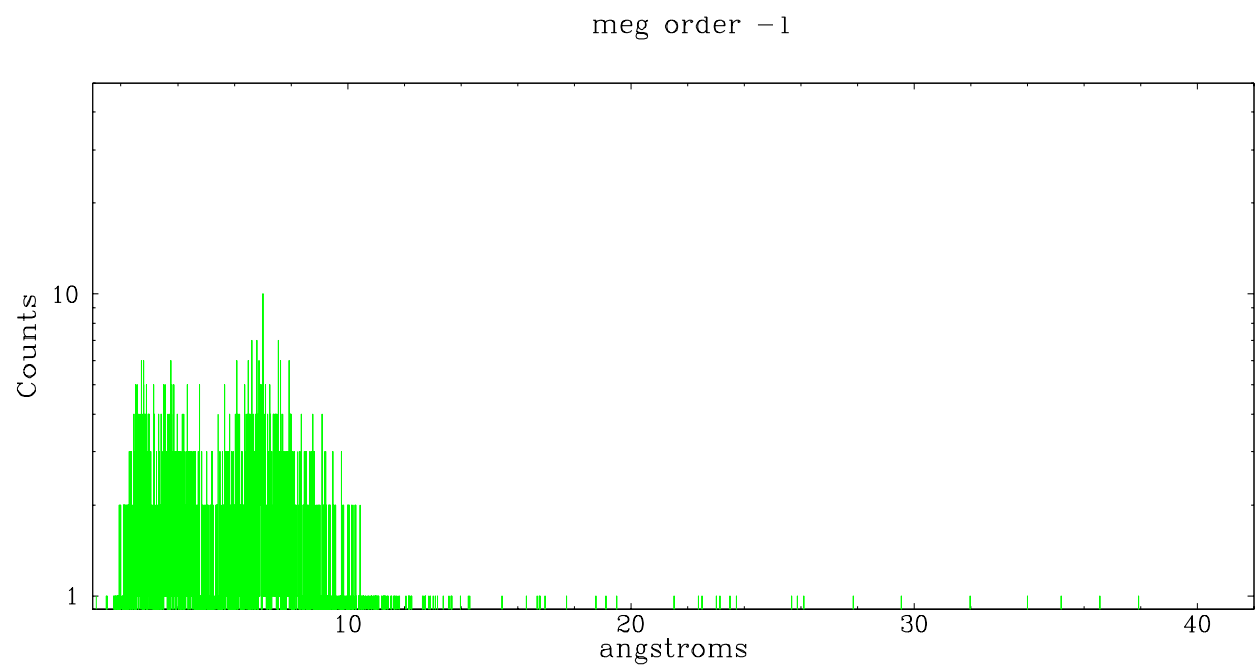
Spot Image MEG



Full Detector MEG

	order -3	order -2	order -1	order 0	order 1	order 2	order 3
Events	411	212	2714	6070	2960	185	298





A Summary

A.1 Status

V&V Scientist	Beth Sundheim
V&V Date (YYYY-MM-DD)	2006.08.09
V&V Edition	1
V&V Disposition and Status	OK
V&V Charge Time	29.443

A.2 Comments