

V&V Reference Report

L2 ASCDS Version : 7.6.8

Observation 4155 - L2 Version 001
Chandra X-Ray Center

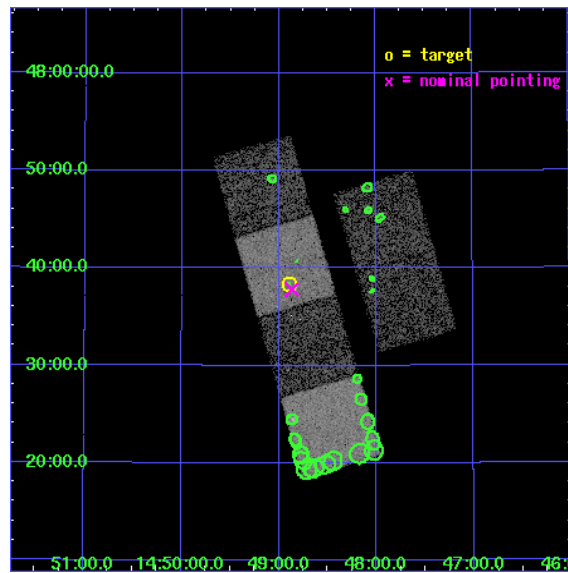
L2 Processing Date : Jul 12 2006

Contents

1	Front	2
2	OBI	3
2.1	OBI	3
2.1.1	Images	3
2.1.2	Bias	3
2.1.3	Parameters	4
2.1.4	Events	4
2.2	Compared Parameters	5
2.3	Aspect	6
2.4	Star Slots	9
2.4.1	Slot 3	9
2.4.2	Slot 4	10
2.4.3	Slot 5	11
2.4.4	Slot 6	12
2.4.5	Slot 7	13
2.5	FID Slots	14
2.5.1	Slot 0	14
2.5.2	Slot 1	15
2.5.3	Slot 2	16
3	Point Sources	17
A	Summary	18
A.1	Status	18
A.2	Comments	18

1 Front

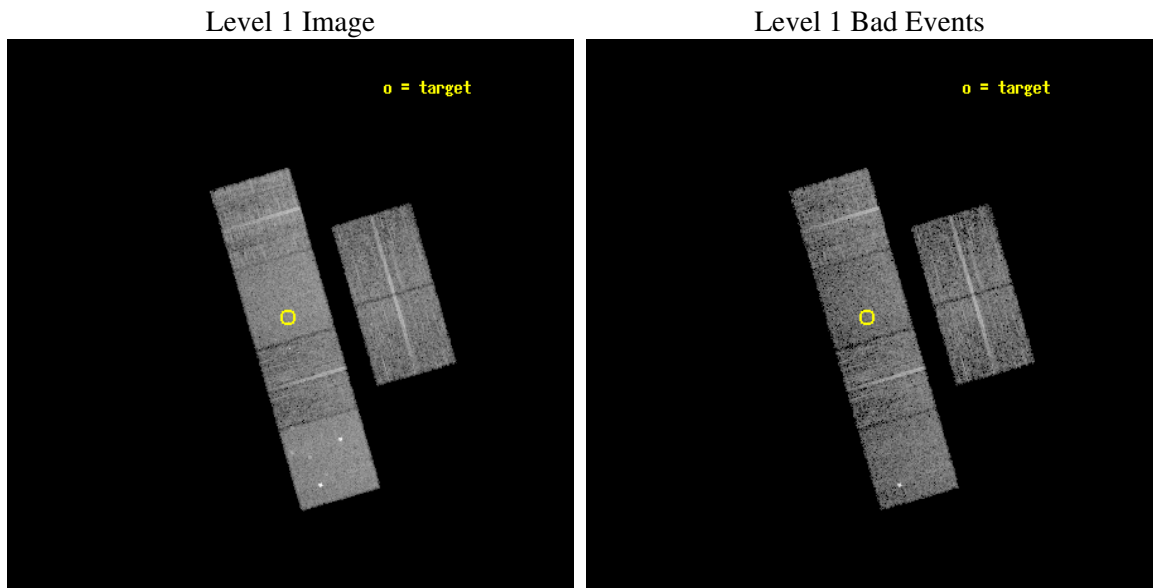
seq_num	700834
obs_id	4155
title	X-RAY TRACE OF THE EARLY RISE OF THE QUASAR POPULATION
observer	Dr. Takamitsu Miyaji
object	PC 1447+4750
dtcycle	0
cycle	P
ra_targ	222.222917
dec_targ	47.639028
ra_nom	222.21651266623
dec_nom	47.630386223691
roll_nom	253.84229776679
revision	2
ontime	7014.3999738693
livetime	6925.5794178356
ontime2	7014.3999738693
ontime3	7014.3999738693
ontime5	7014.3999738693
ontime6	7014.3999738693
ontime7	7014.3999738693
ontime8	7014.3999738693
l2events	67113



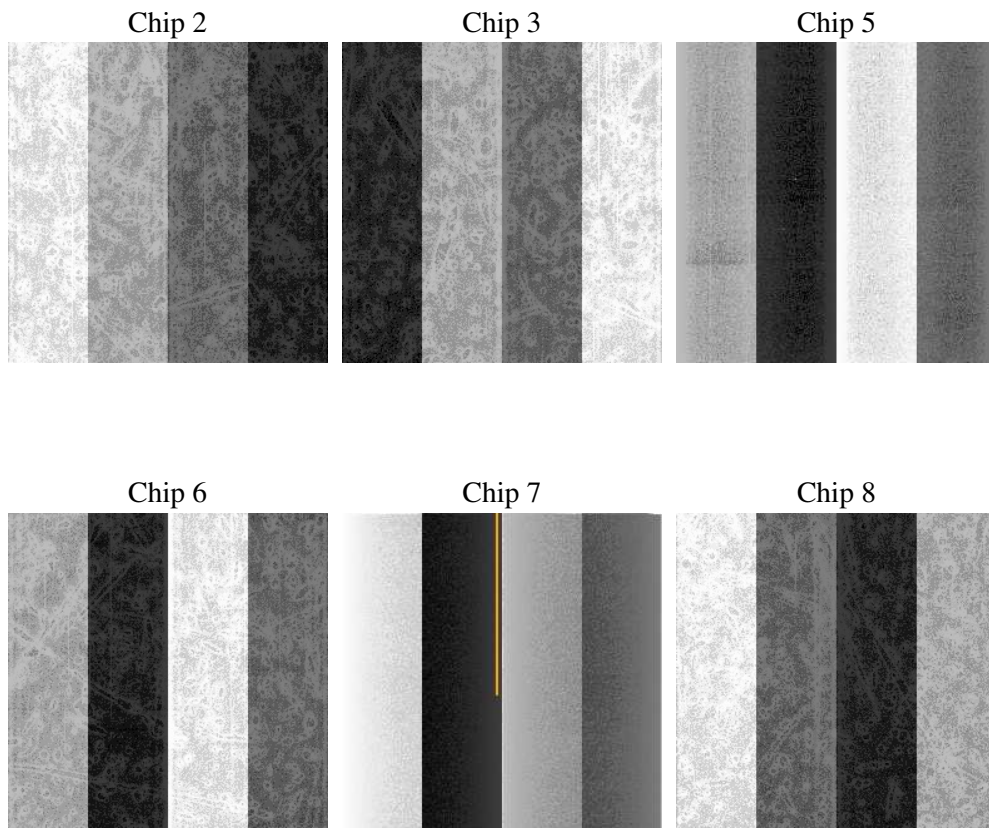
2 OBI

2.1 OBI

2.1.1 Images



2.1.2 Bias



2.1.3 Parameters

obi_num	0
ascdsver	7.6.8
caldbver	3.2.2
date	2006-07-12T14:42:36
revision	2

sched_exp_time	7053.000000
ontime	7020.0073295534
ontime2	7020.0073295534
ontime3	7020.0073295534
ontime5	7020.0073295534
ontime6	7020.0073295534
ontime7	7020.0073295534
ontime8	7020.0072996318
l1events	311089

2.1.4 Events

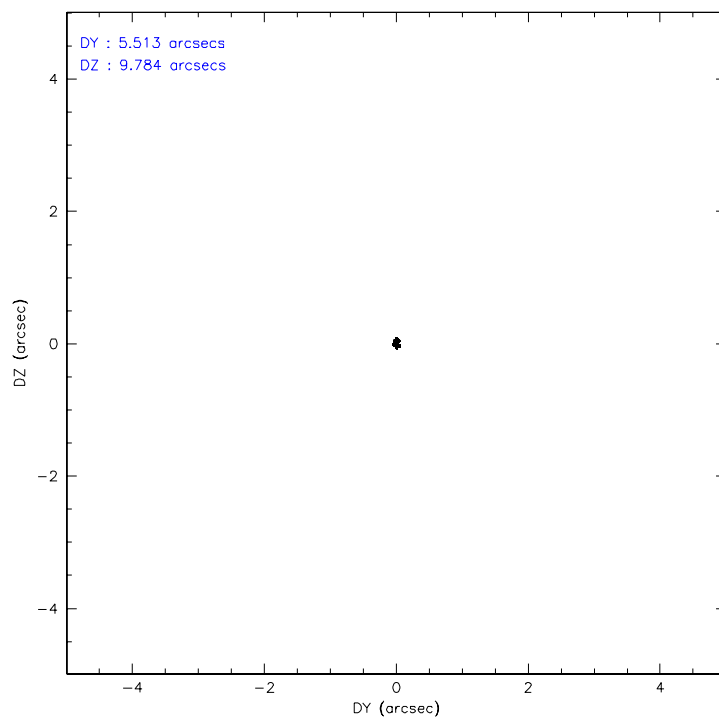
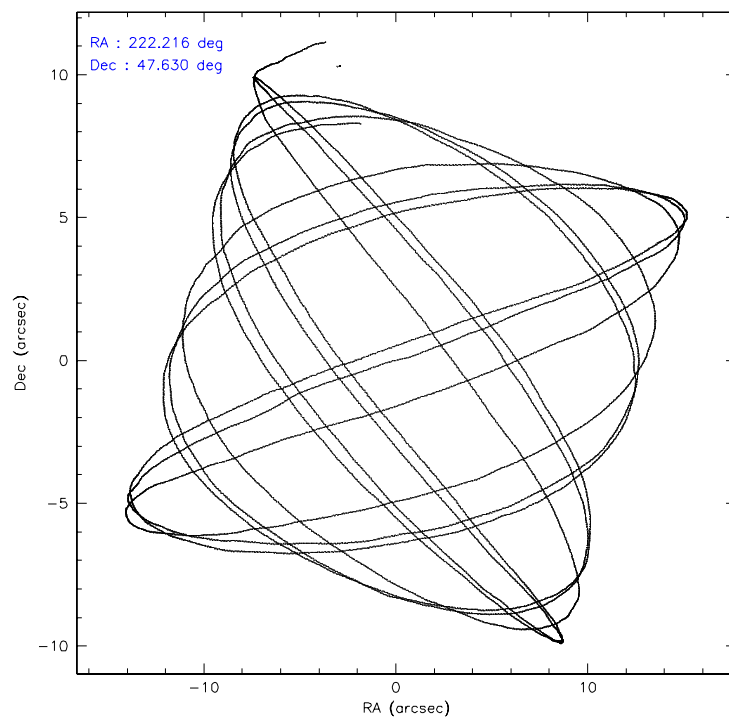
	ccd 2	ccd 3	ccd 5	ccd 6	ccd 7	ccd 8
level 1 events	43921	42827	64861	43938	57317	58225
rejected events	38544	37485	36100	38285	35350	43748
rejected %	87%	87%	55%	87%	61%	75%

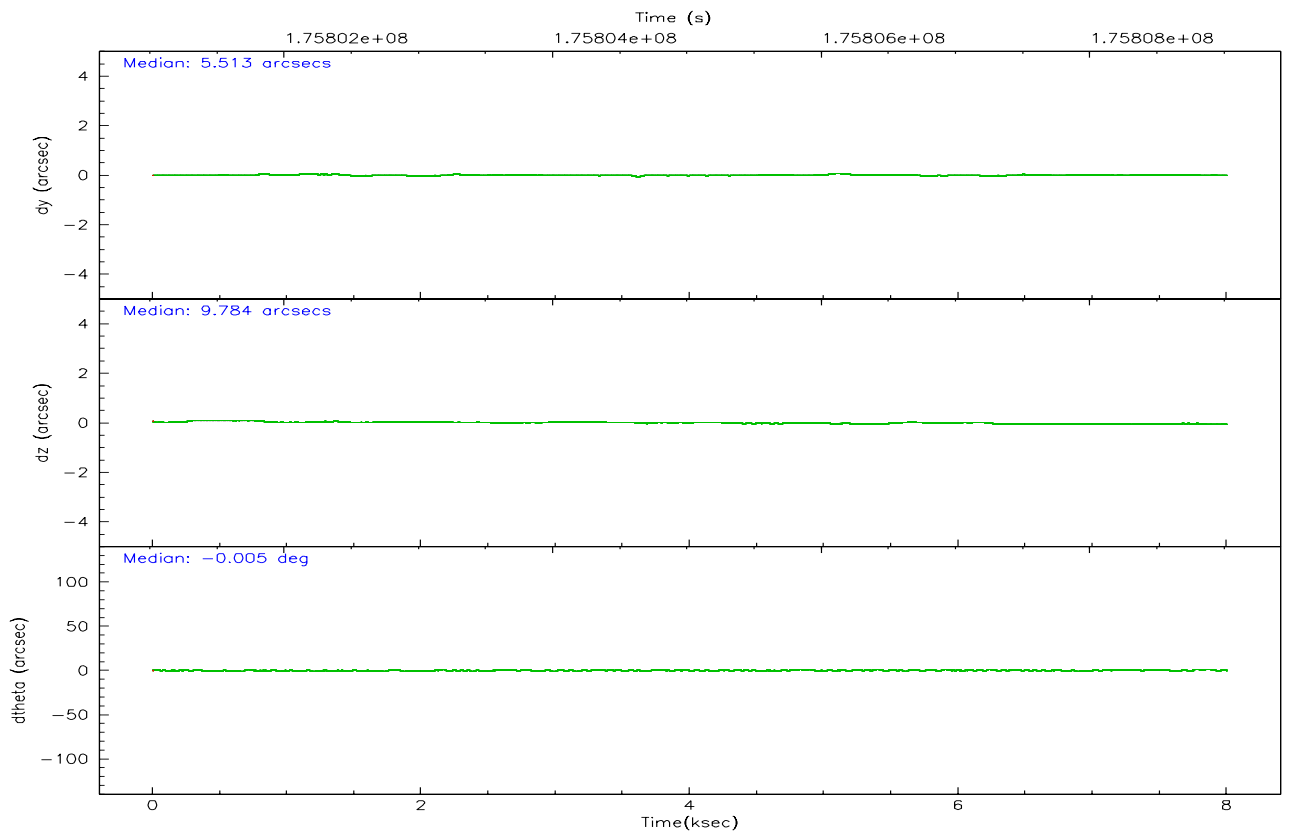
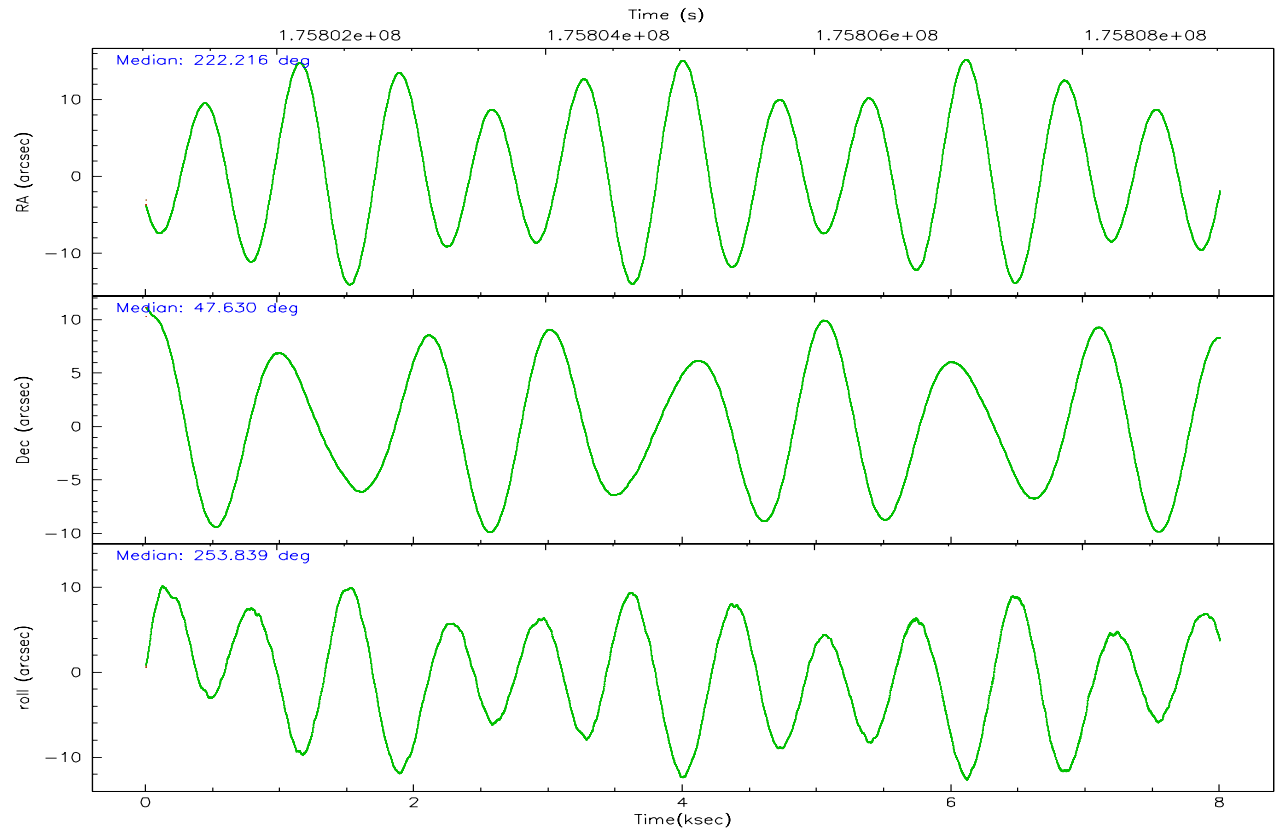
	ccd 2	ccd 3	ccd 5	ccd 6	ccd 7	ccd 8
grade 0 events	2401	2307	3316	2379	1315	4676
	5%	5%	5%	5%	2%	8%
grade 1 events	18	32	1003	20	45	32
	0%	0%	1%	0%	0%	0%
grade 2 events	1070	1046	8552	1100	5393	2715
	2%	2%	13%	2%	9%	4%
grade 3 events	507	492	668	548	1100	1835
	1%	1%	1%	1%	1%	3%
grade 4 events	509	532	641	531	1072	1729
	1%	1%	0%	1%	1%	2%
grade 5 events	1659	1930	3090	1998	3832	2642
	3%	4%	4%	4%	6%	4%
grade 6 events	892	966	15628	1100	13114	3529
	2%	2%	24%	2%	22%	6%
grade 7 events	36865	35522	31963	36262	31446	41067
	83%	82%	49%	82%	54%	70%

2.2 Compared Parameters

Parameter	Planned	Actual	Parameter	Planned	Actual
Instrument	ACIS	ACIS	Obspar format version number	6	6
Detector	ACIS-235678	ACIS-235678	Obspar file type	PREDICTED	ACTUAL
Grating	NONE	NONE	Obspar update status	NONE	UPDATED
Data mode	VFAINT	VFAINT	On-chip summing requested	N	N
Observation mode	POINTING	POINTING	Subarray requested	NONE	NONE
Pointing RA	222.206361	222.2165126662299	Alternating exposures requested	N	N
Pointing Dec	47.656712	47.63038622369096	Primary exposure time	0.000000	3.2
Pointing Roll	253.693182	253.8422977667942			
SIM focus pos (mm)	-0.684267	-0.6828225247311905			
SIM defocus (mm)	0	0.001444936568705701			
SIM translation stage pos (mm)	-190.132523	-190.1425803651734			
SIM translation stage offset (mm)	0	0.01005778216563158			
Observation start time	175801977.184000	175800636.81644			
Observation start date	2003-07-28T17:51:53	2003-07-28T17:30:36			
Observation end time	175809030.184000	175809693.71683			
Observation end date	2003-07-28T19:49:26	2003-07-28T20:01:33			
Read mode	TIMED	TIMED			

2.3 Aspect



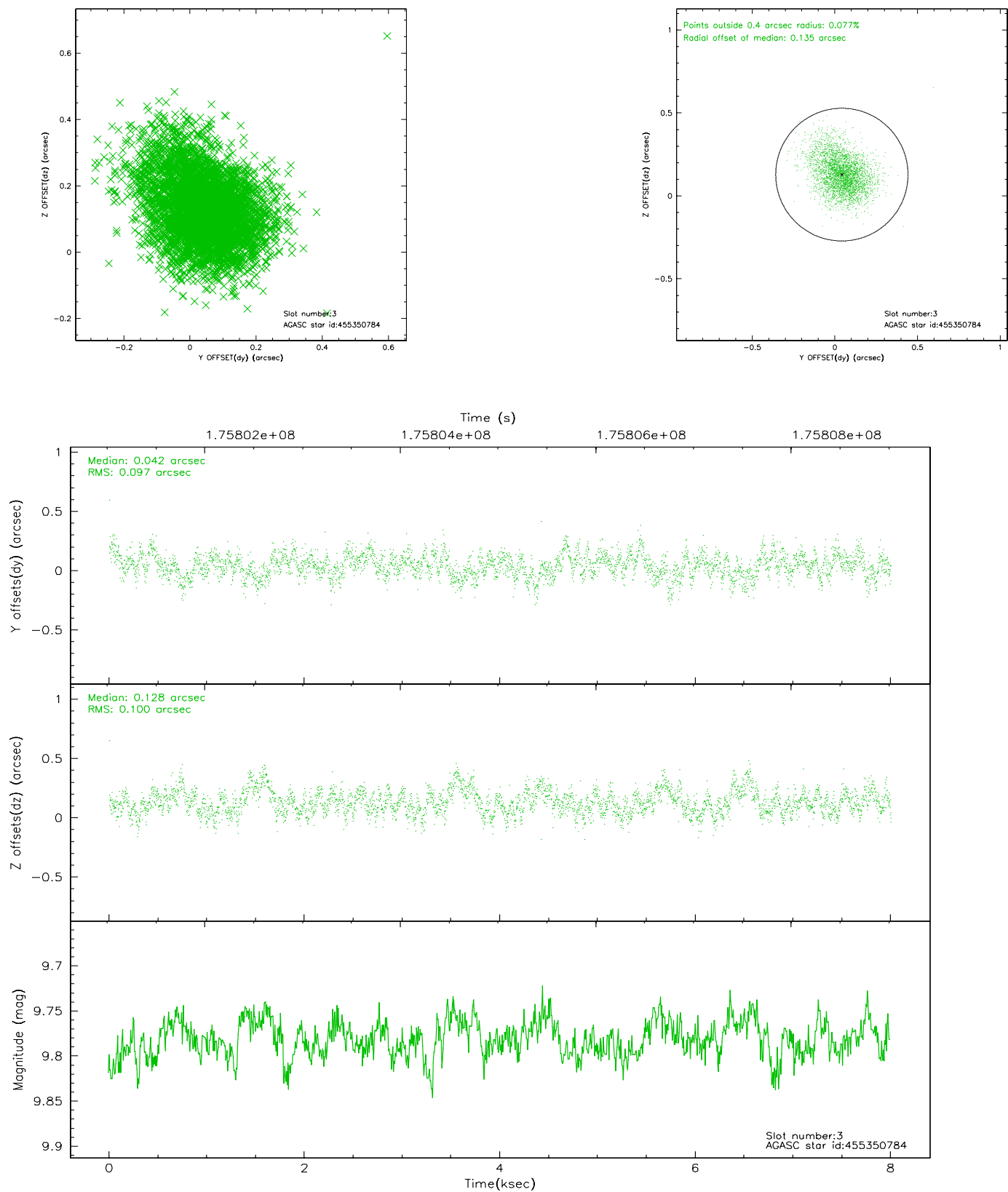


Slot Statistics

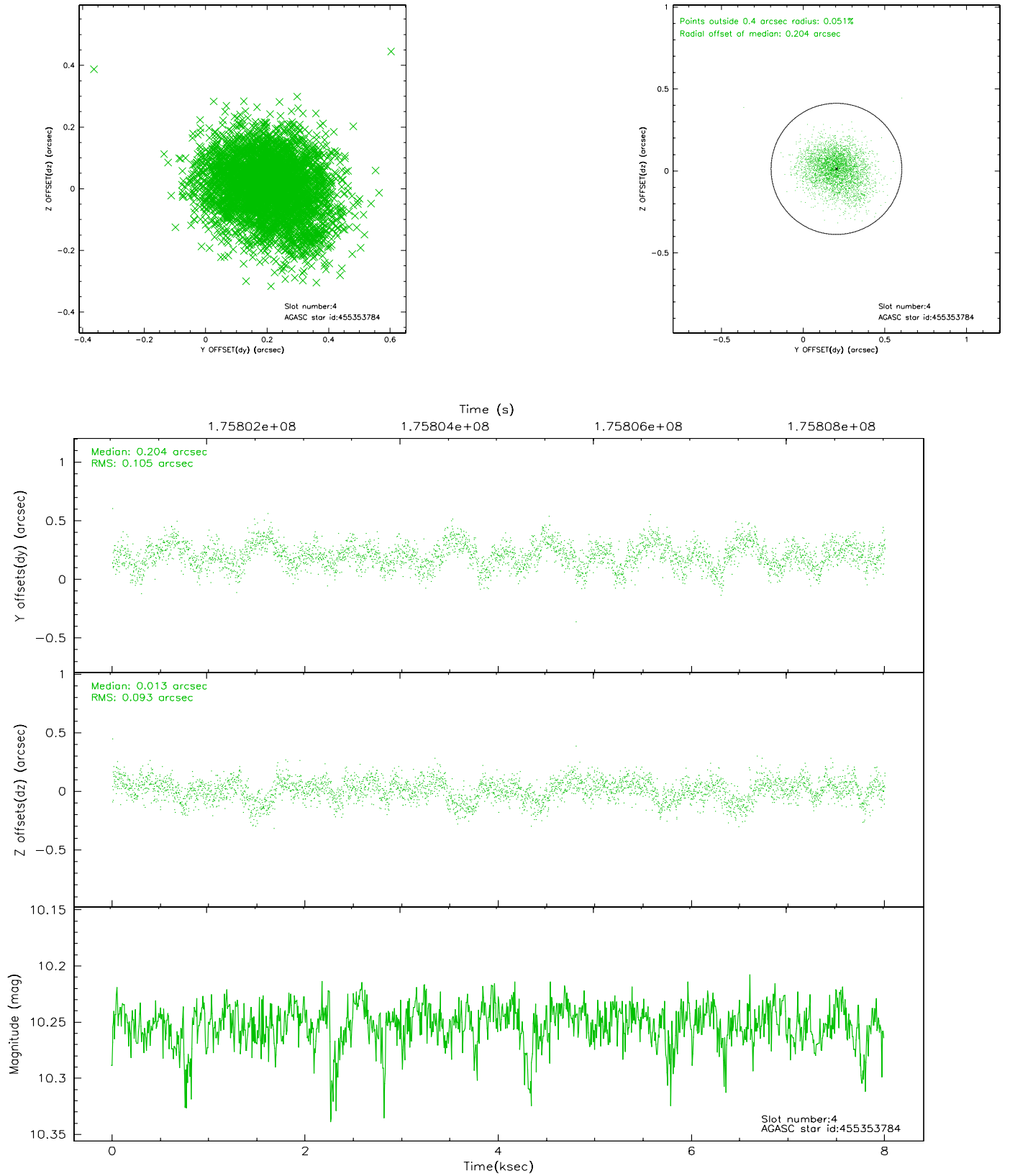
slot	status	id	mag	n_pts	med_dy	med_dz	dr1	dr2	ra	dec	mean_y	mean_z
0	FID	ACIS-S-2	7.10	1952	-0.053	-0.013	0.006	0.010	0.000000	0.000000	-758.26	-1731.00
1	FID	ACIS-S-4	7.20	1952	0.055	0.029	0.005	0.009	0.000000	0.000000	2154.79	176.83
2	FID	ACIS-S-5	7.23	1952	-0.033	-0.008	0.006	0.010	0.000000	0.000000	-1810.20	171.22
3	GUIDE	455350784	9.78	3901	0.042	0.128	0.146	0.244	222.434192	46.961811	2243.29	1239.94
4	GUIDE	455353784	10.25	3903	0.204	0.013	0.150	0.243	222.345867	47.064437	1951.10	927.71
5	GUIDE	455744568	9.55	3904	-0.104	-0.002	0.131	0.209	221.270222	47.865898	-100.17	-2384.69
6	GUIDE	455745760	9.27	3902	-0.085	0.020	0.085	0.135	223.068967	47.803274	-1103.15	1850.12
7	GUIDE	455747520	7.98	3903	-0.055	-0.158	0.097	0.148	221.848032	47.909366	-632.11	-1085.35

2.4 Star Slots

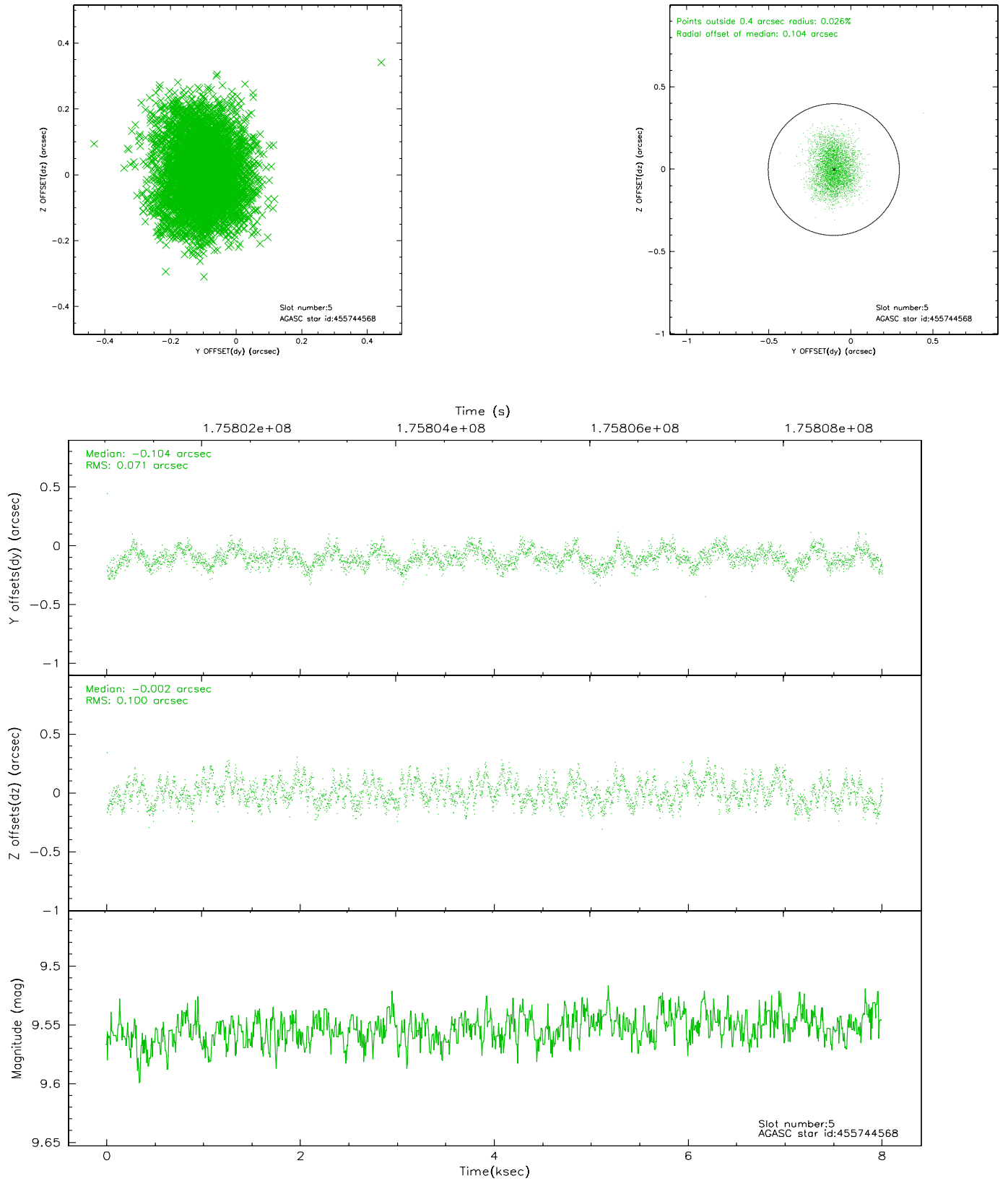
2.4.1 Slot 3



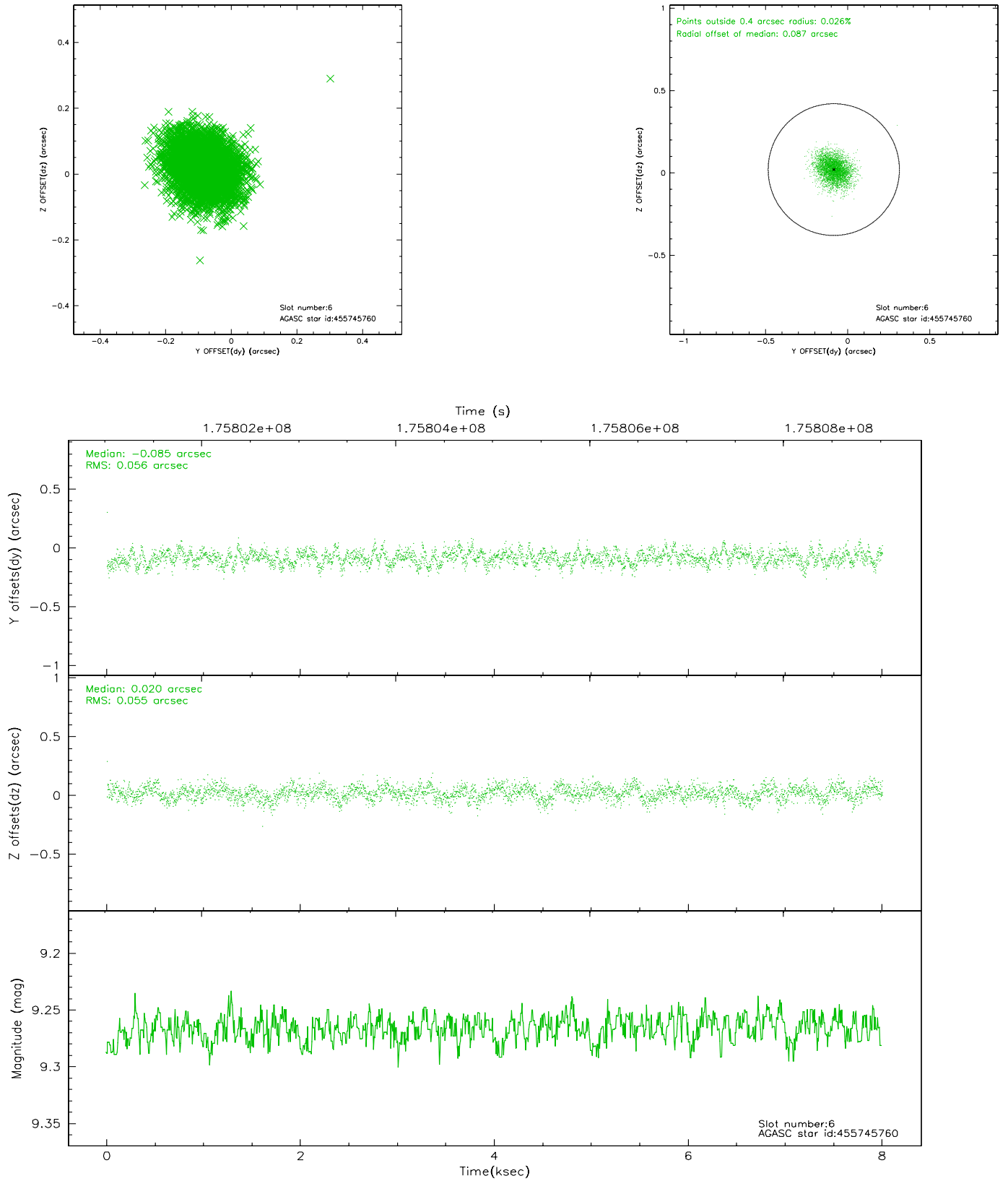
2.4.2 Slot 4



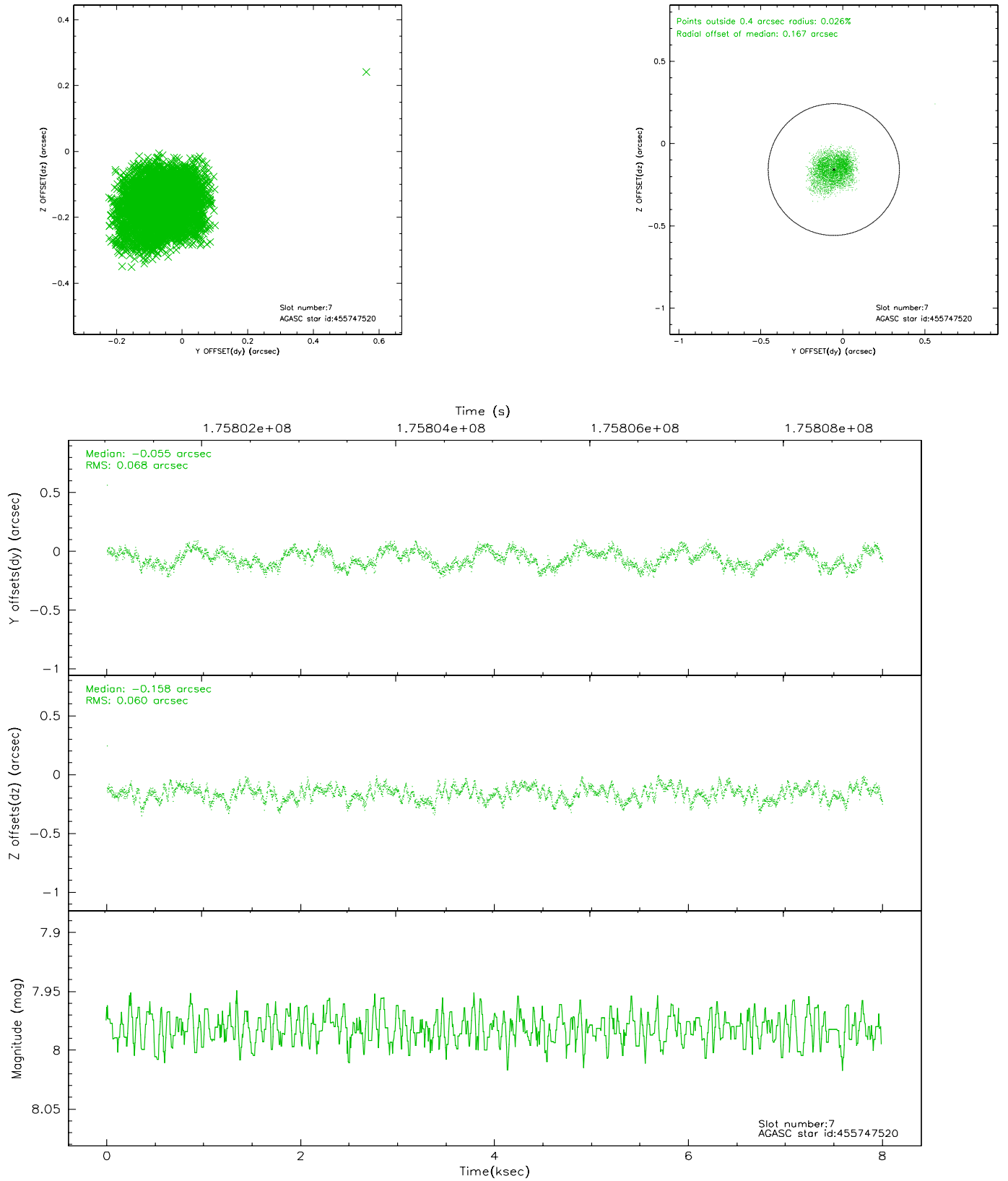
2.4.3 Slot 5



2.4.4 Slot 6

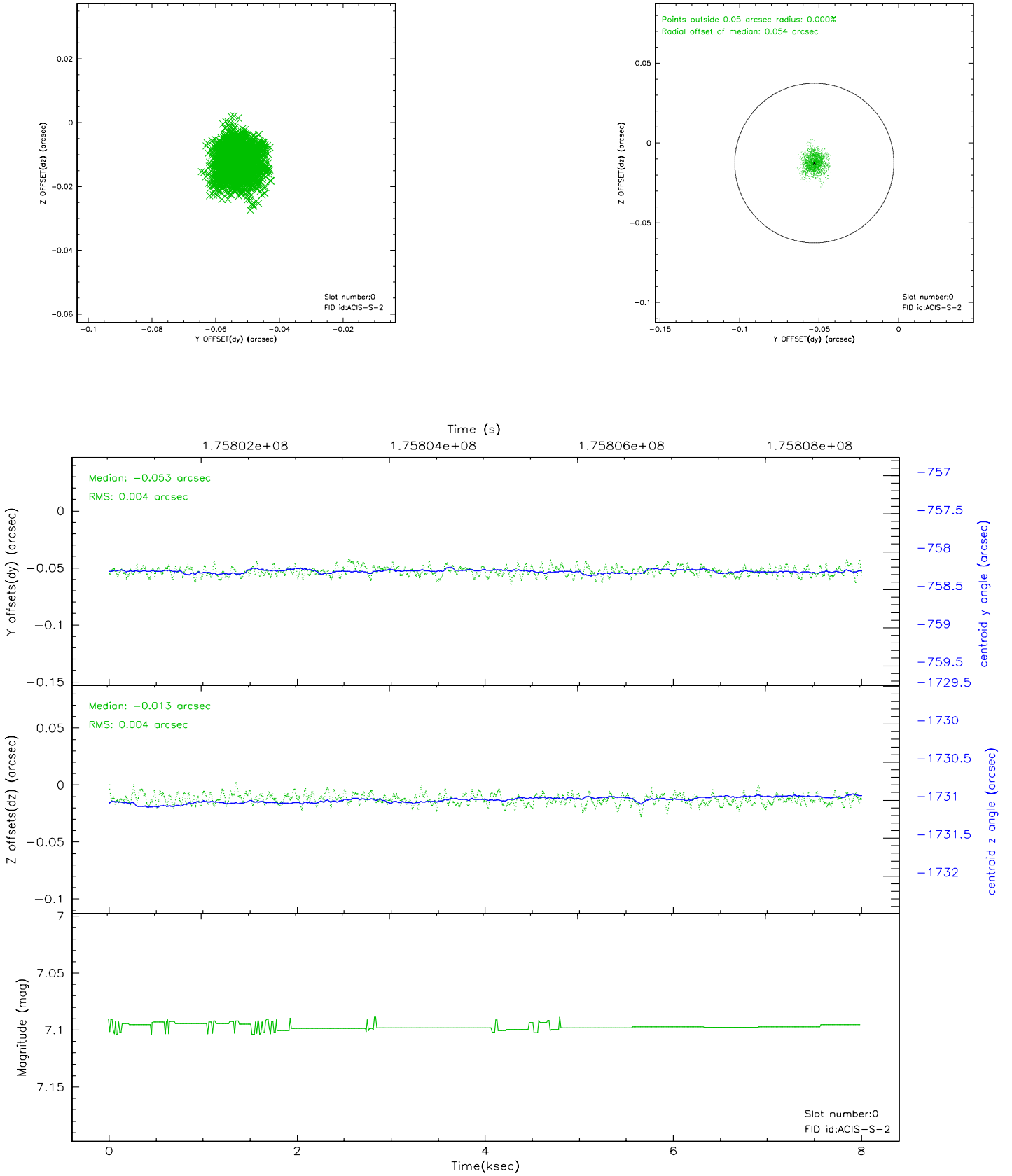


2.4.5 Slot 7

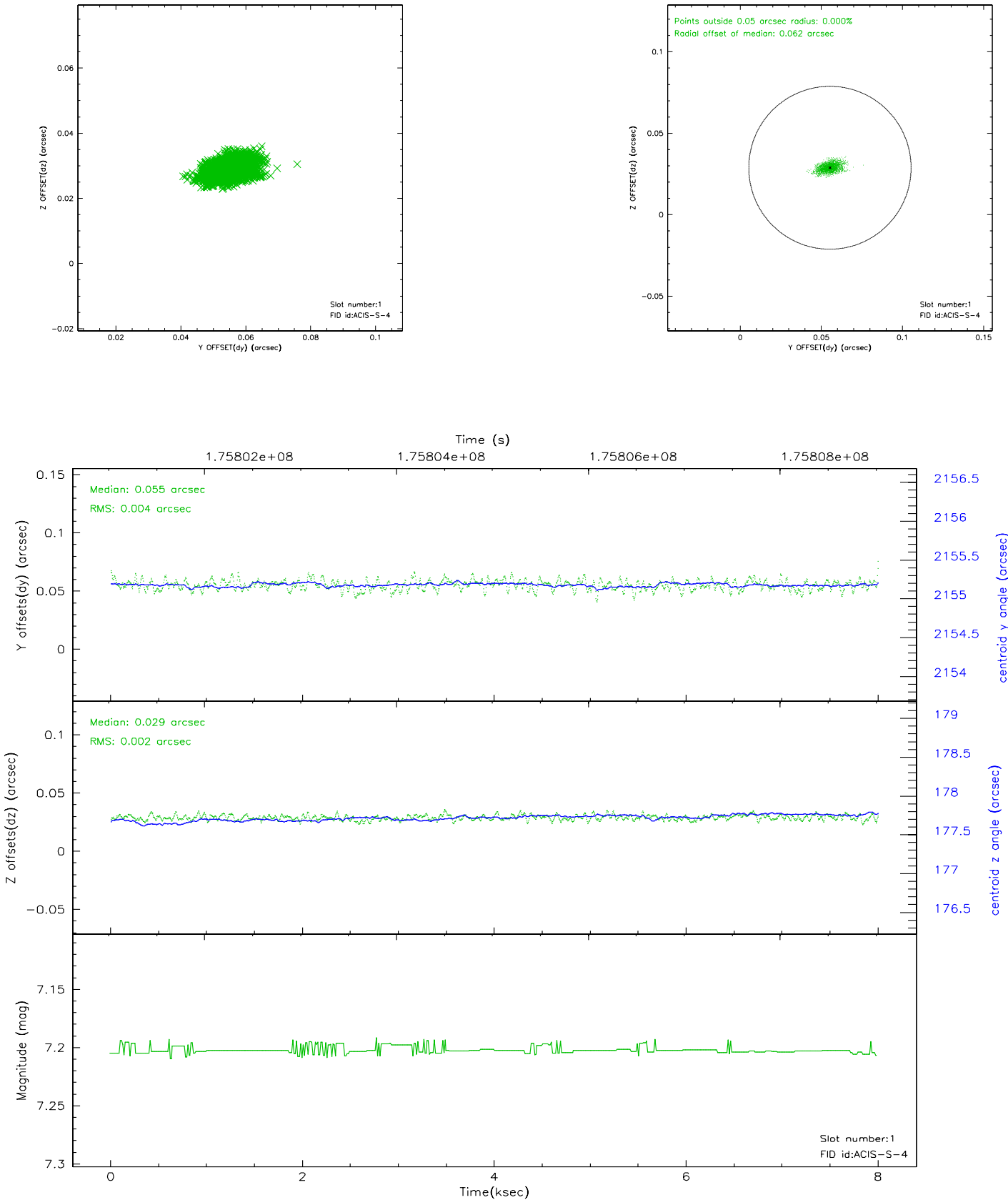


2.5 FID Slots

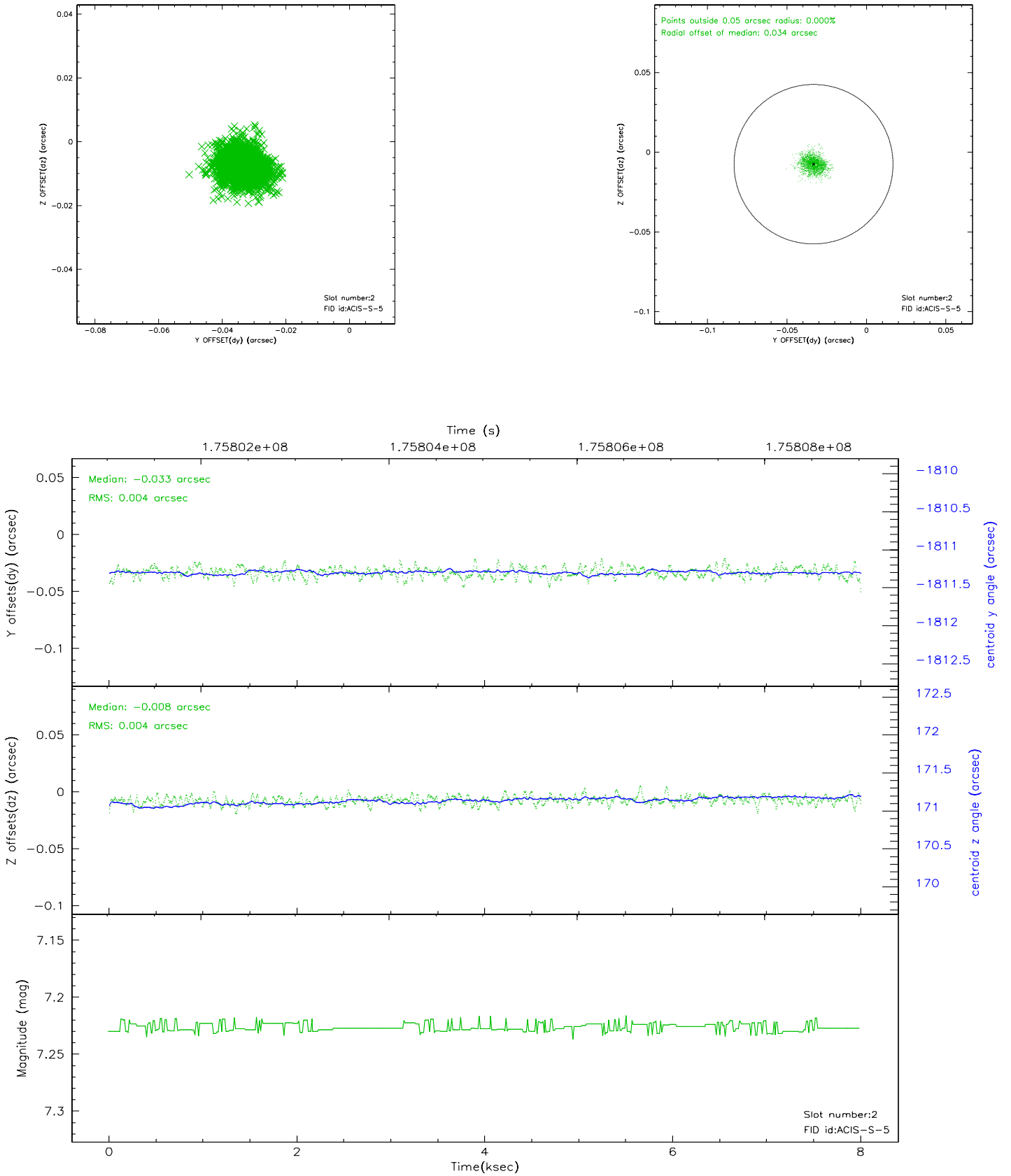
2.5.1 Slot 0



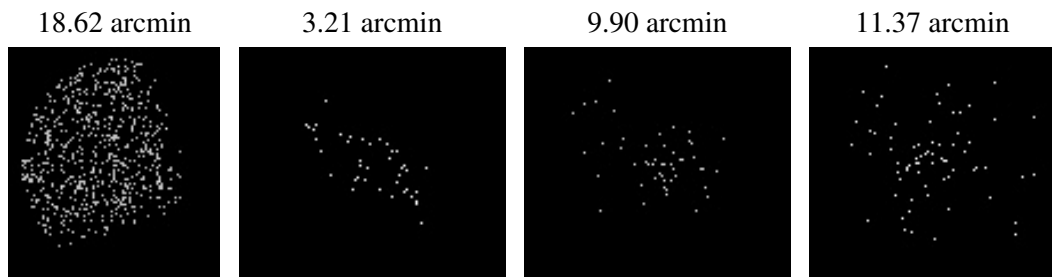
2.5.2 Slot 1



2.5.3 Slot 2



3 Point Sources



A Summary

A.1 Status

V&V Scientist	Jen Lauer
V&V Date (YYYY-MM-DD)	2006.07.12
V&V Edition	1
V&V Disposition and Status	OK
V&V Charge Time	7.018

A.2 Comments