

V&V Reference Report

L2 ASCDS Version : 8.4.5

Observation 4146 - L2 Version 3
Chandra X-Ray Center

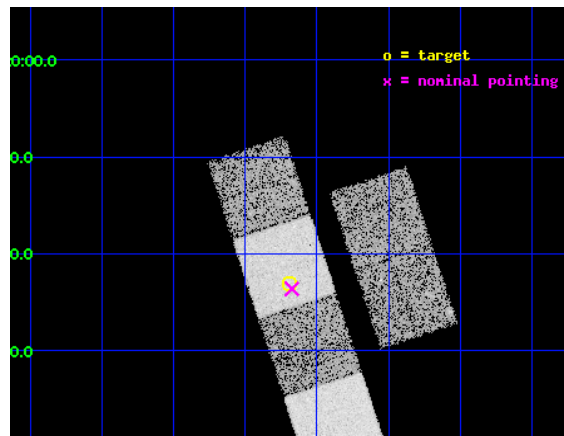
L2 Processing Date : Oct 26 2012

Contents

1	Front	2
2	OBI	3
2.1	OBI	3
2.1.1	Images	3
2.1.2	Bias	3
2.1.3	Parameters	4
2.1.4	Events	4
2.2	Compared Parameters	5
2.3	Aspect	6
2.4	Star Slots	9
2.4.1	Slot 3	9
2.4.2	Slot 4	10
2.4.3	Slot 5	11
2.4.4	Slot 6	12
2.4.5	Slot 7	13
2.5	FID Slots	14
2.5.1	Slot 0	14
2.5.2	Slot 1	15
2.5.3	Slot 2	16
A	Summary	17
A.1	Status	17
A.2	Comments	17

1 Front

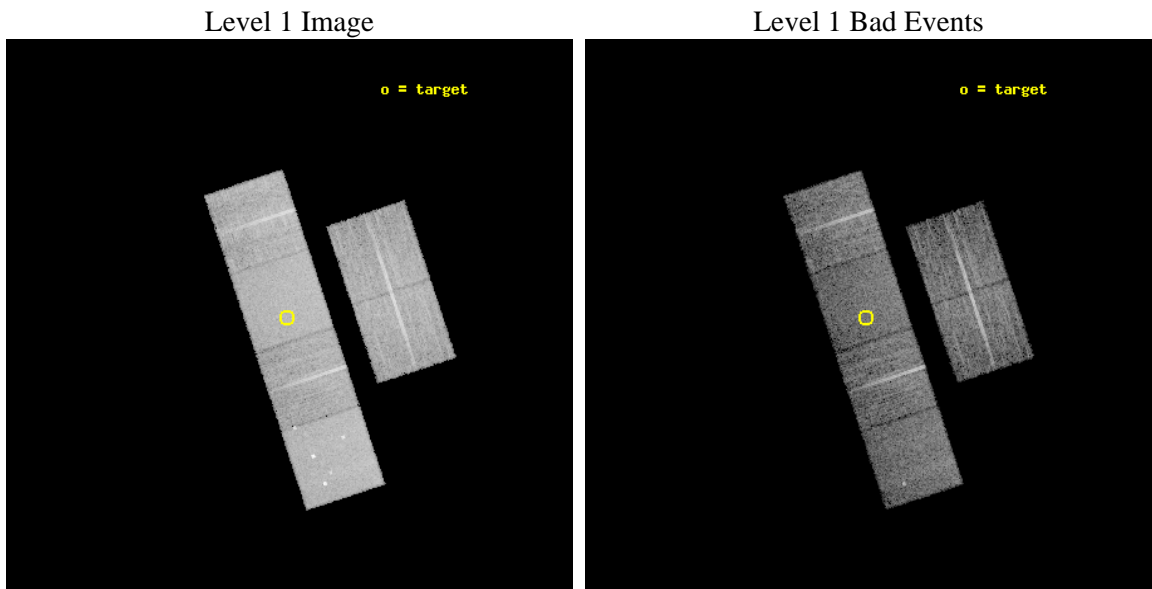
seq_num	700825	Sequence number
obs_id	4146	Observation id
title	X-RAYS FROM BROAD ABSORPTION LINE QUASARS WITH EXTREME PROPERTIES	
observer	Dr. Patrick Hall	Principal investigator
object	UN J1141-0143	Source name
dtcycle	0	
cycle	P	events from which exps? Prim/Second/Both
ra_targ	175.298333	Observer's specified target RA [deg]
dec_targ	-1.718806	Observer's specified target Dec [deg]
ra_nom	175.29370524551	Nominal RA [deg]
dec_nom	-1.7273284073559	Nominal Dec [deg]
roll_nom	251.73363891703	Nominal Roll [deg]
revision	3	Processing version of data
ontime	10150.399962187	Sum of GTIs [s]
livetime	10021.869486029	Livetime [s]
ontime2	10150.399962187	Sum of GTIs [s]
ontime3	10150.399962187	Sum of GTIs [s]
ontime5	10150.399962187	Sum of GTIs [s]
ontime6	10150.399962187	Sum of GTIs [s]
ontime7	10150.399962187	Sum of GTIs [s]
ontime8	10150.399962187	Sum of GTIs [s]
l2events	99164	Number of level 2 events



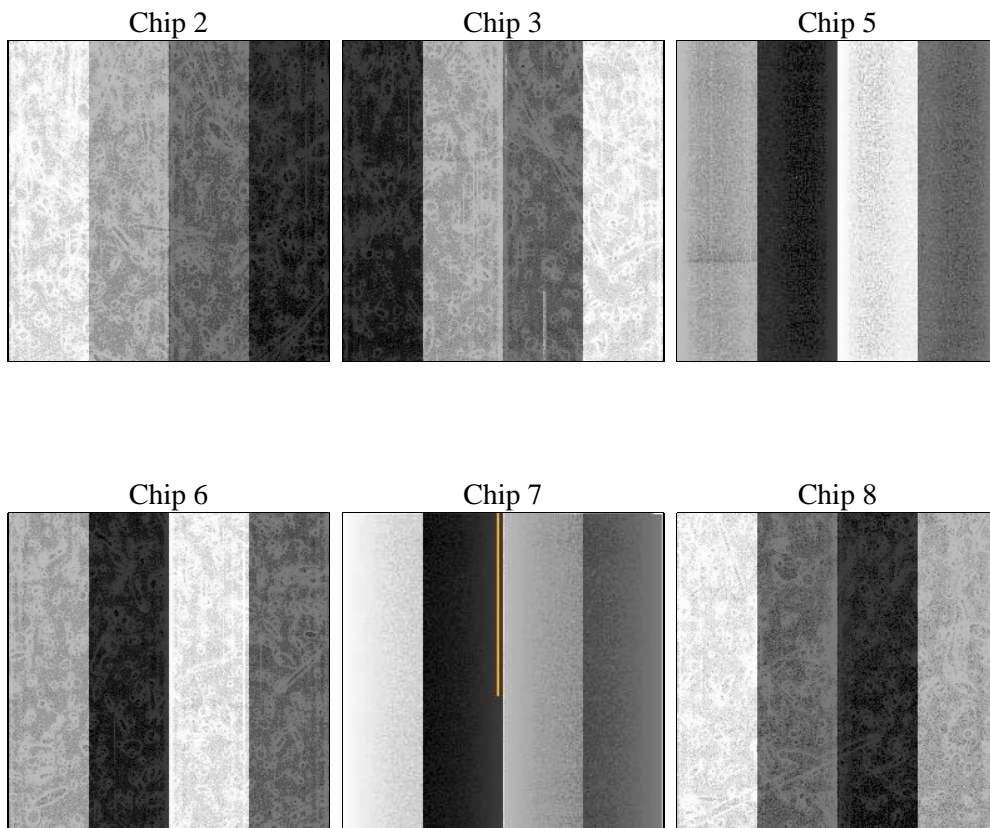
2 OBI

2.1 OBI

2.1.1 Images



2.1.2 Bias



2.1.3 Parameters

obi_num	2	Obi number	sched_exp_time	10000.000000	[s] Scheduled observation exposure time
ascdsver	8.4.5	Processing system revision	ontime	10150.399962187	Sum of GTIs [s]
caldsver	4.5.2	 	ontime2	10150.399962187	Sum of GTIs [s]
date	2012-10-26T21:31:54	Date and time of file creation	ontime3	10150.399962187	Sum of GTIs [s]
revision	3	Processing version of data	ontime5	10150.399962187	Sum of GTIs [s]
			ontime6	10150.399962187	Sum of GTIs [s]
			ontime7	10150.399962187	Sum of GTIs [s]
			ontime8	10150.399962187	Sum of GTIs [s]
			l1events	476373	Number of level 1 events

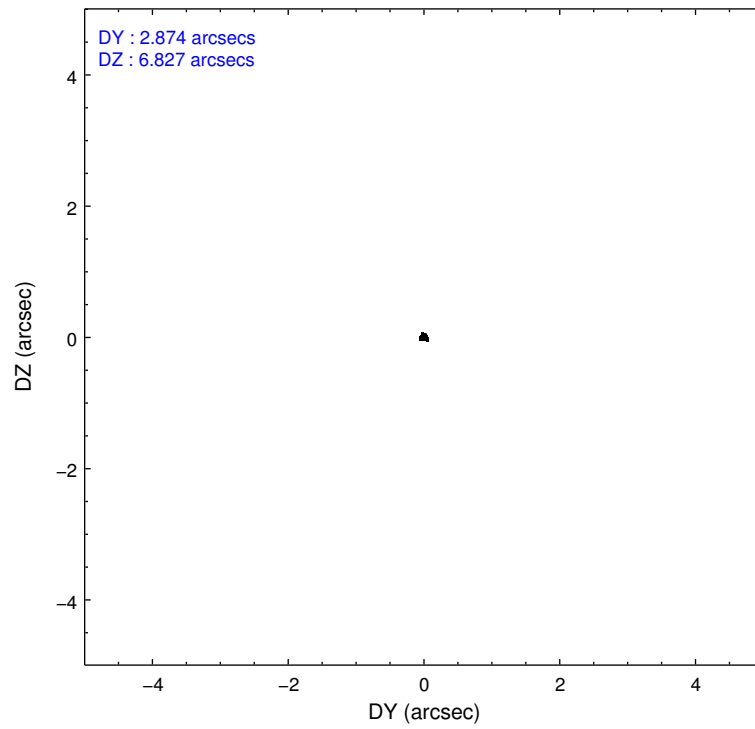
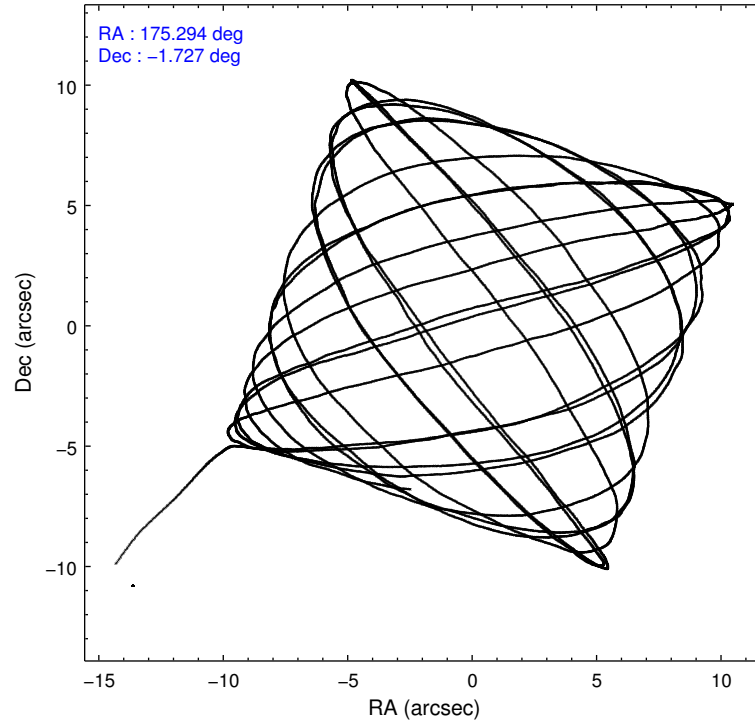
2.1.4 Events

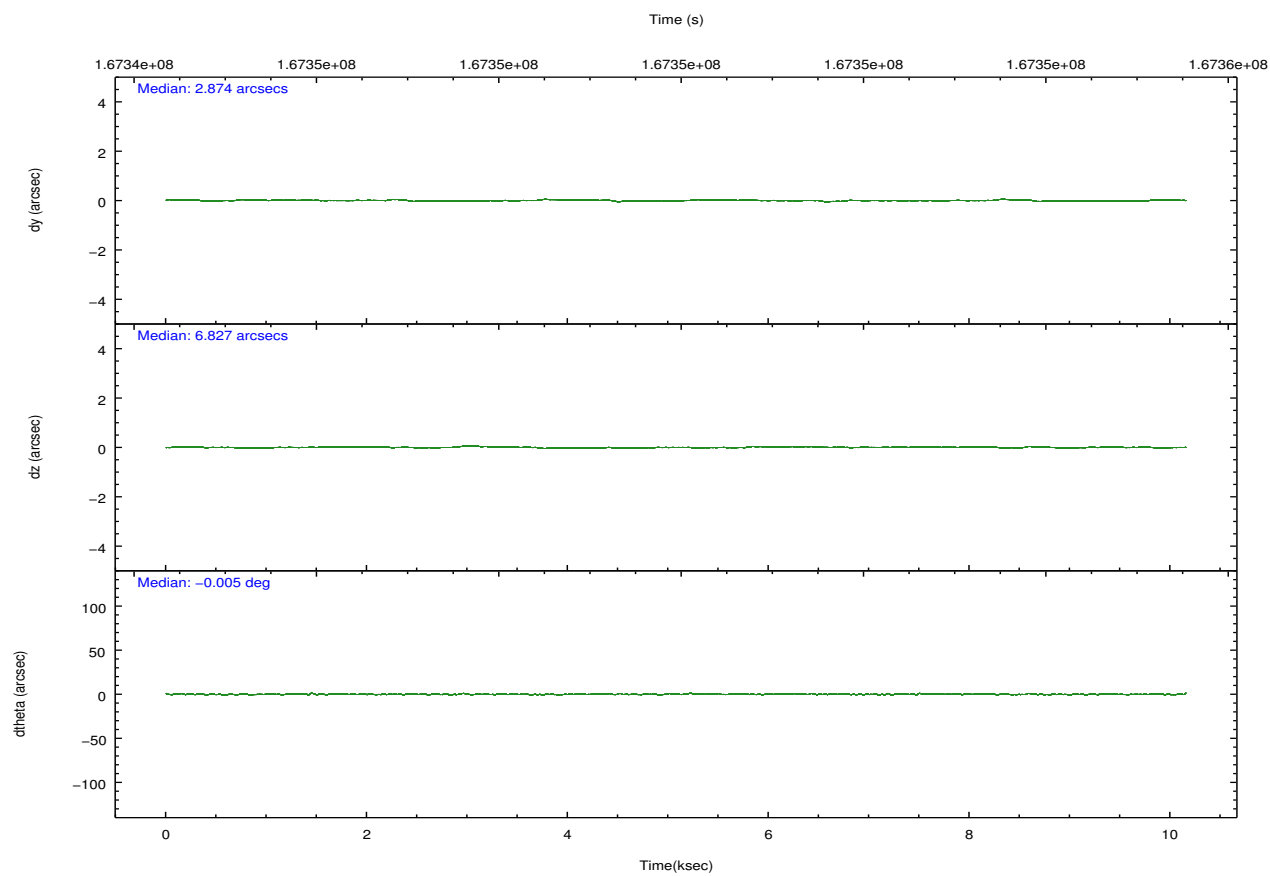
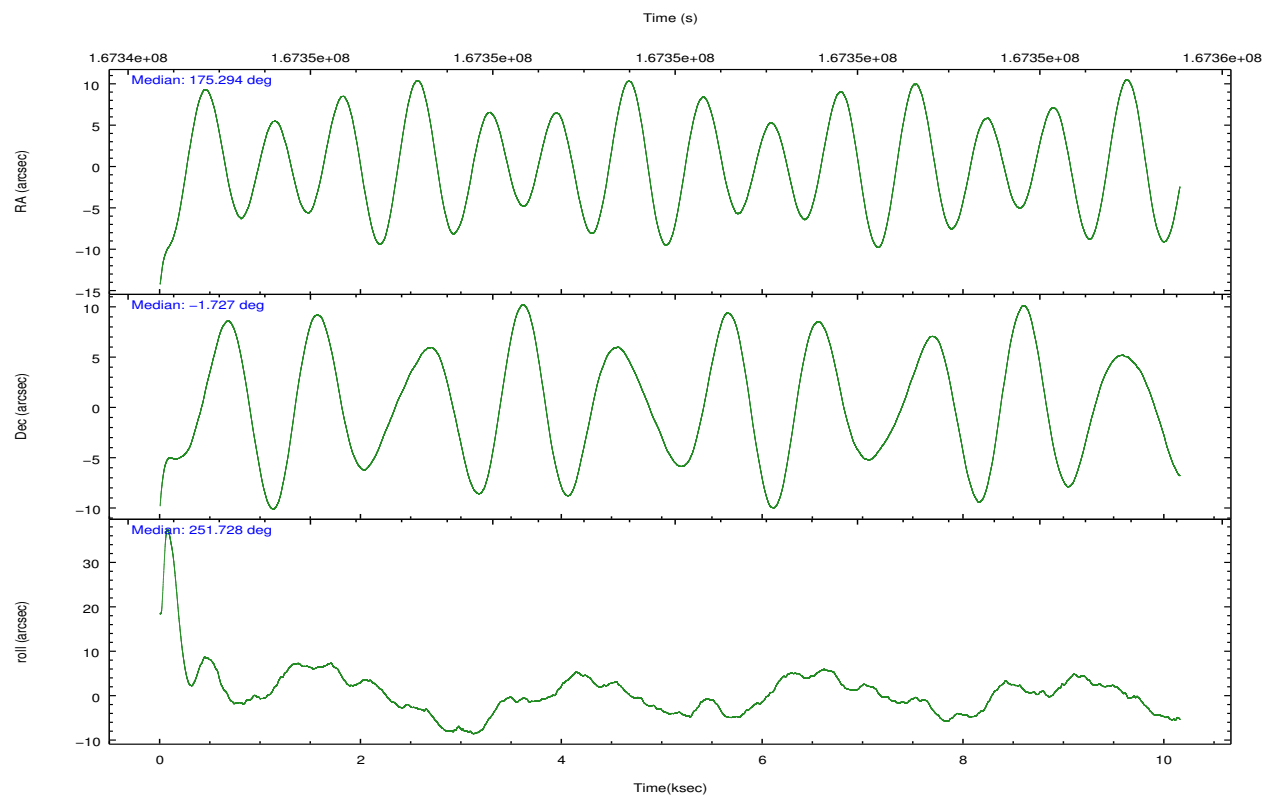
	ccd 2	ccd 3	ccd 5	ccd 6	ccd 7	ccd 8		ccd 2	ccd 3	ccd 5	ccd 6	ccd 7	ccd 8
level 1 events	70185	65571	98847	68377	89294	84099	grade 0 events	3596	3339	5588	3171	3327	5360
rejected events	62524	58393	55921	60936	54815	67927		5%	5%	5%	4%	3%	6%
rejected %	89%	89%	56%	89%	61%	80%	grade 1 events	33	52	210	31	89	48
								0%	0%	0%	0%	0%	0%
							grade 2 events	1610	1380	13281	1623	7296	3660
								2%	2%	13%	2%	8%	4%
							grade 3 events	790	806	1947	777	3294	1898
								1%	1%	1%	1%	3%	2%
							grade 4 events	788	769	1842	780	3128	1816
								1%	1%	1%	1%	3%	2%
							grade 5 events	2675	2850	7492	3060	8688	3760
								3%	4%	7%	4%	9%	4%
							grade 6 events	1343	1343	23092	1589	19583	4410
								1%	2%	23%	2%	21%	5%
							grade 7 events	59350	55032	45395	57346	43889	63147
								84%	83%	45%	83%	49%	75%

2.2 Compared Parameters

Parameter	Planned	Actual	Parameter	Planned	Actual
Instrument	ACIS	ACIS	Obspar format version number	7	7
Detector	ACIS-235678	ACIS-235678	Obspar file type	PREDICTED	ACTUAL
Grating	NONE	NONE	Obspar update status	NONE	UPDATED
Data mode	FAINT	FAINT	Number of optional ACIS chips dropped	0	0
Observation mode	POINTING	POINTING	On-chip summing requested	N	N
[deg] Pointing RA	175.287840	175.2937052455111	Subarray requested	NONE	NONE
[deg] Pointing Dec	-1.700732	-1.72732840735594	Alternating exposures requested	N	N
[deg] Pointing Roll	251.576848	251.7336389170319	[s] Primary exposure time	0.000000	3.2
[mm] SIM focus pos	-0.684267	-0.6828225247311905			
[mm] SIM defocus	0	0.001444936568705701			
[mm] SIM translation stage pos	-190.132523	-190.145094680475			
[mm] SIM translation stage offset	0	0.01257209746719923			
[s] Observation start time (MET)	167345025.184000	167343654.09492			
Observation start date	2003-04-21T20:42:41	2003-04-21T20:20:54			
[s] Observation end time (MET)	167355025.184000	167355783.43293			
Observation end date	2003-04-21T23:29:21	2003-04-21T23:43:03			
Read mode	TIMED	TIMED			

2.3 Aspect



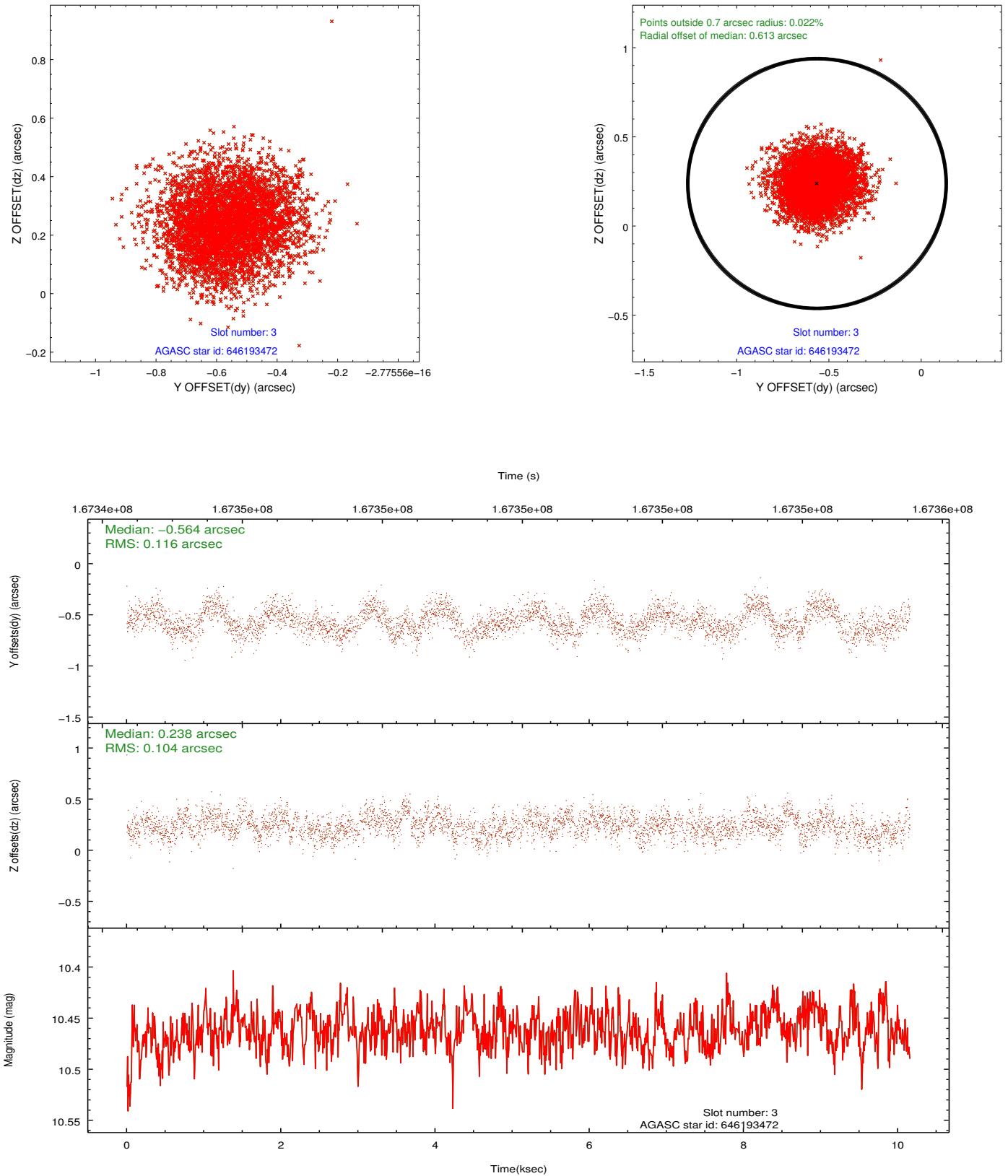


Slot Statistics

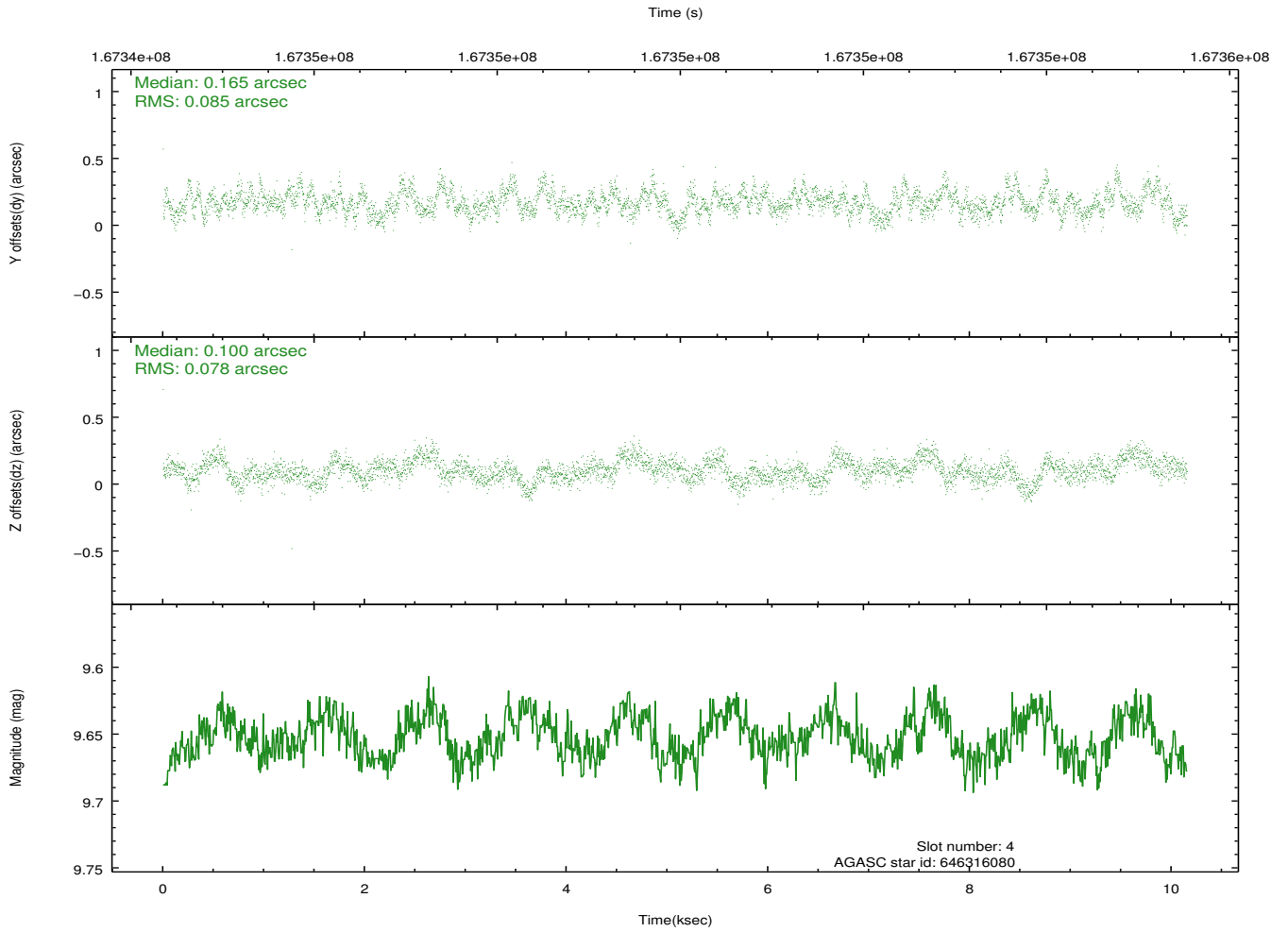
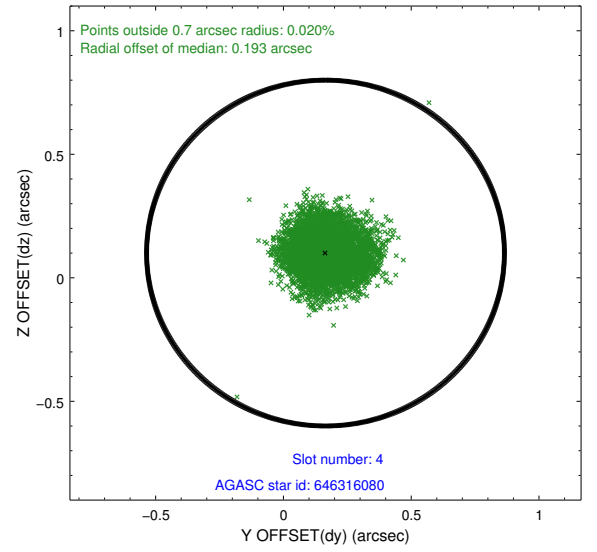
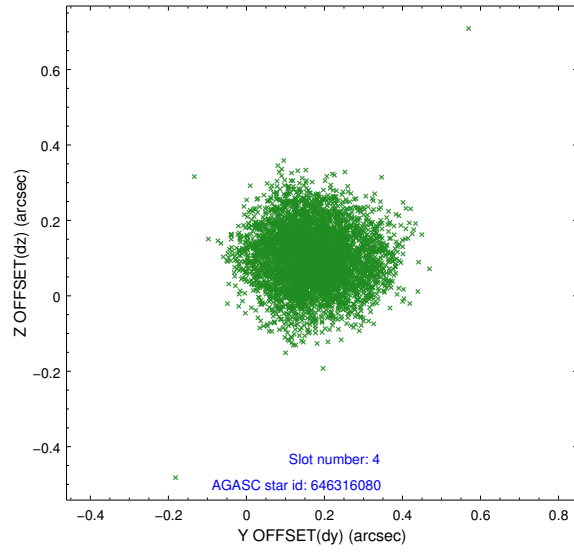
slot	status	id	mag	n_pts	med_dy	med_dz	dr1	dr2	ra	dec	mean_y	mean_z
0	FID	ACIS-S-2	7.12	2476	-0.037	-0.003	0.007	0.011	0.000000	0.000000	-755.52	-1727.90
1	FID	ACIS-S-4	7.21	2477	0.017	0.019	0.005	0.010	0.000000	0.000000	2157.54	180.11
2	FID	ACIS-S-5	7.24	2477	-0.011	-0.007	0.007	0.011	0.000000	0.000000	-1807.70	174.29
3	BAD	646193472	10.46	4608	-0.564	0.238	0.168	0.265	174.931034	-2.060228	1633.99	-808.81
4	GUIDE	646316080	9.65	4950	0.165	0.100	0.124	0.195	175.658524	-2.434808	2086.31	2100.78
5	GUIDE	646323688	9.92	4946	0.208	-0.203	0.114	0.186	175.182675	-1.523064	-486.58	-560.64
6	GUIDE	646324808	8.39	4953	0.120	-0.022	0.062	0.099	175.125728	-1.837660	652.11	-397.44
7	GUIDE	646322952	9.77	4952	0.022	-0.094	0.134	0.224	175.354154	-1.823942	345.72	366.65

2.4 Star Slots

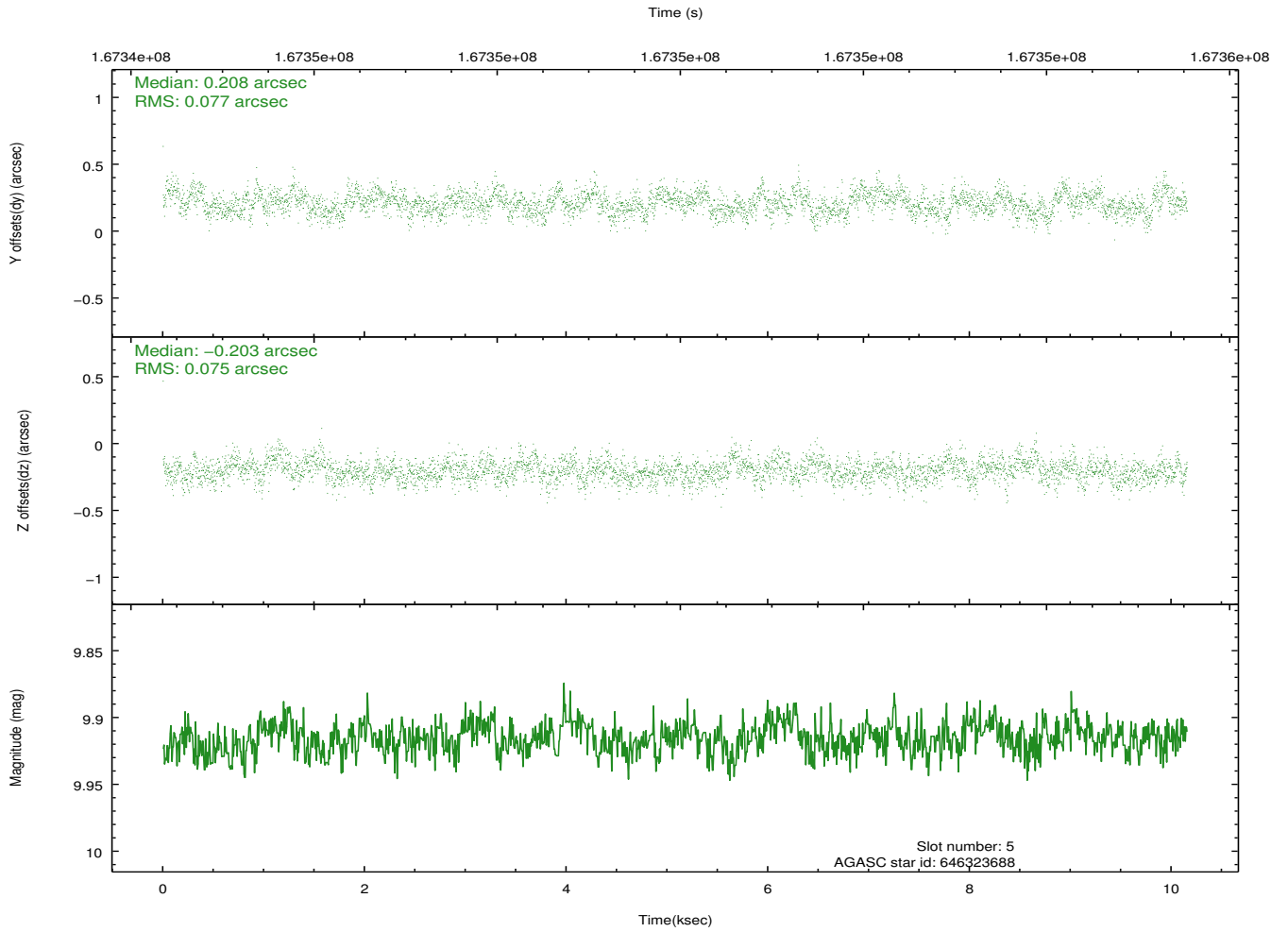
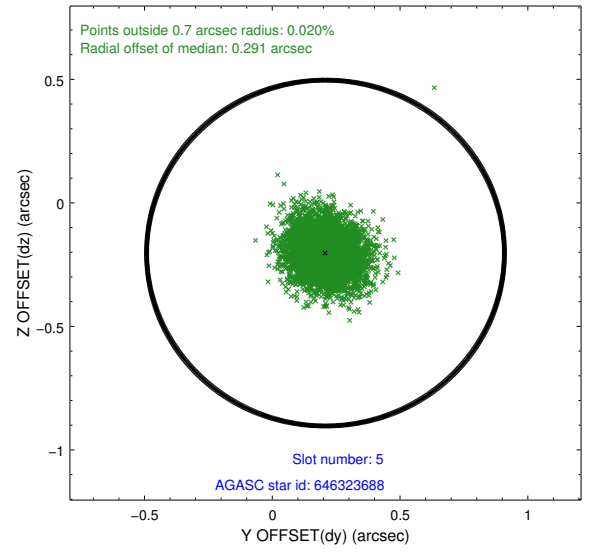
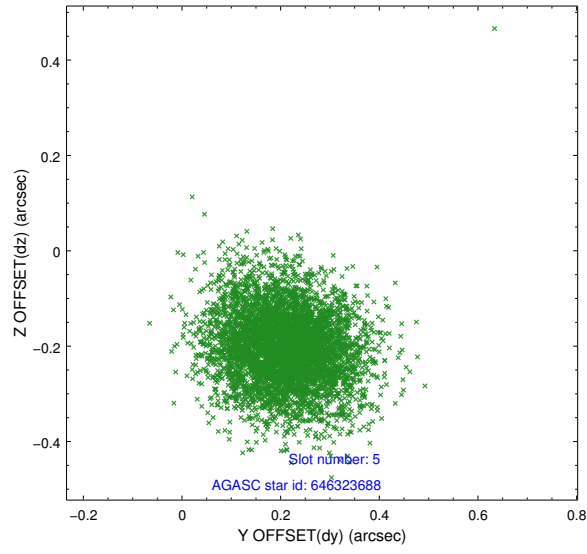
2.4.1 Slot 3



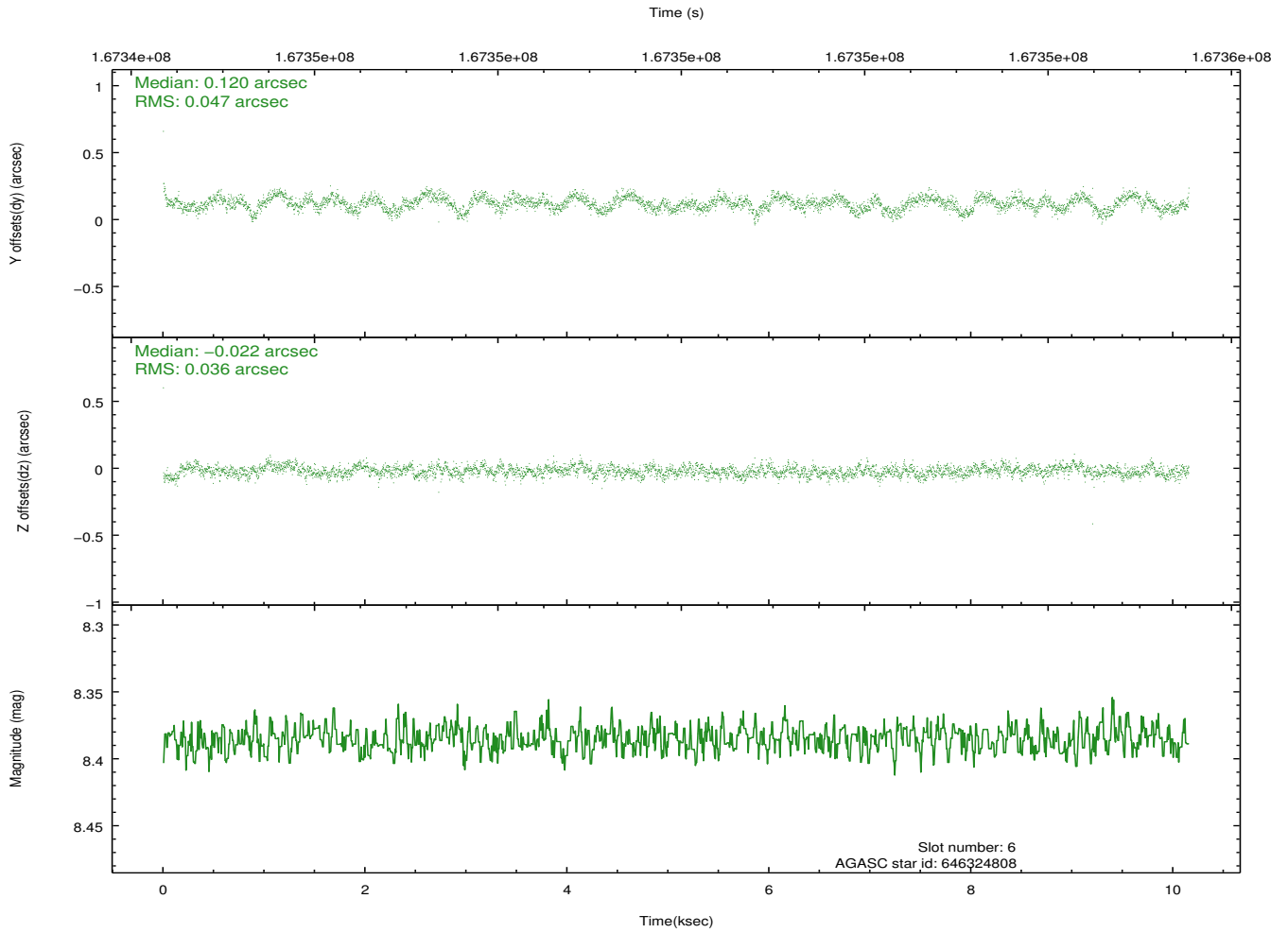
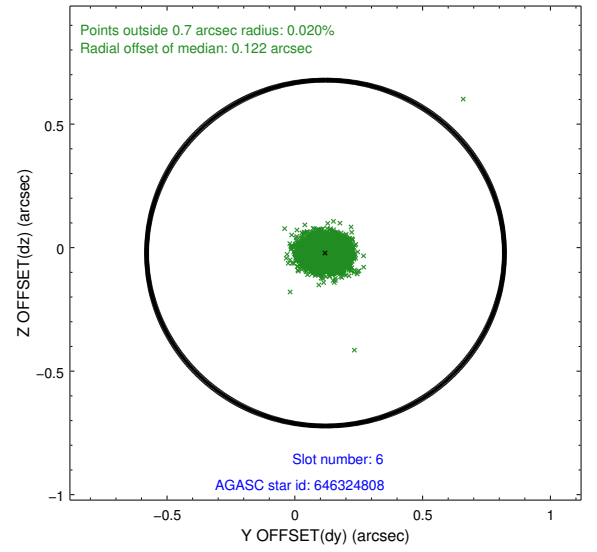
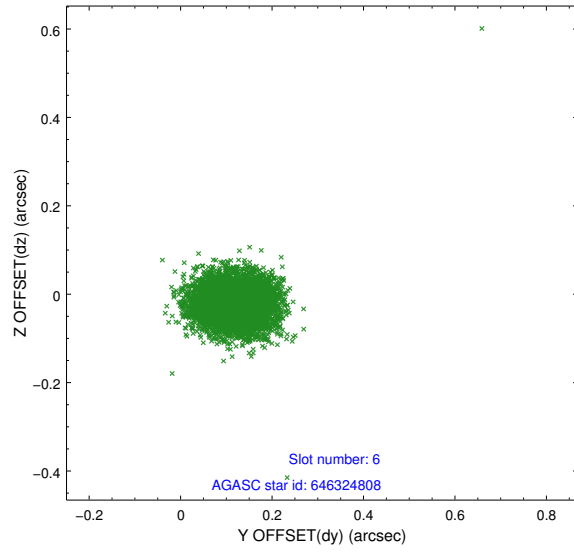
2.4.2 Slot 4



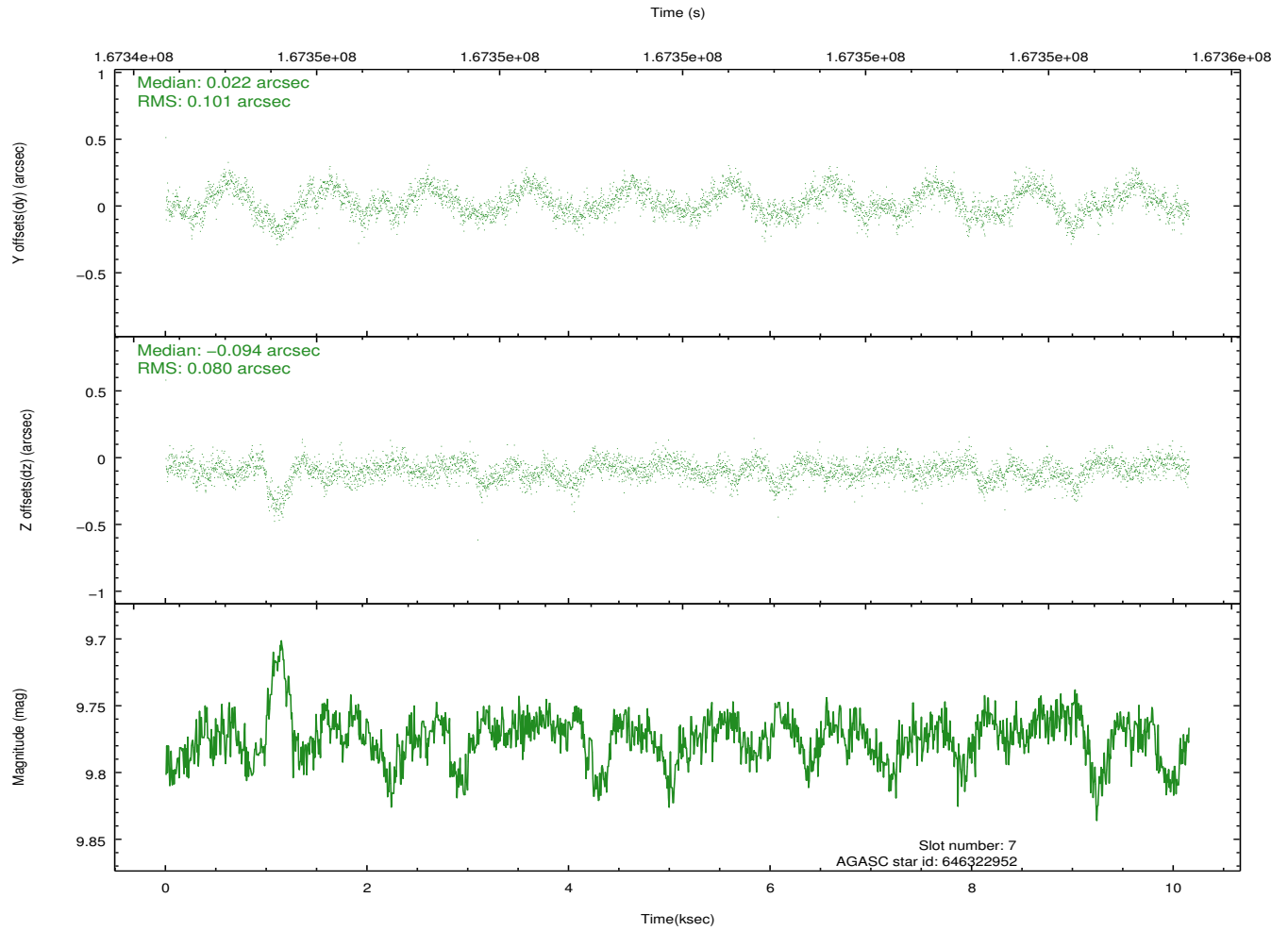
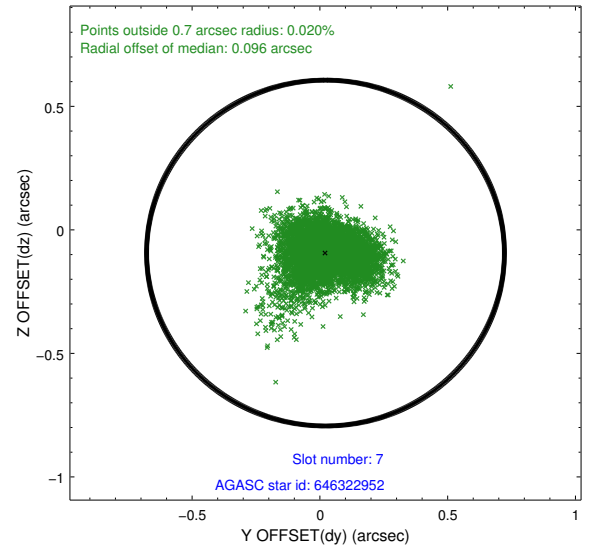
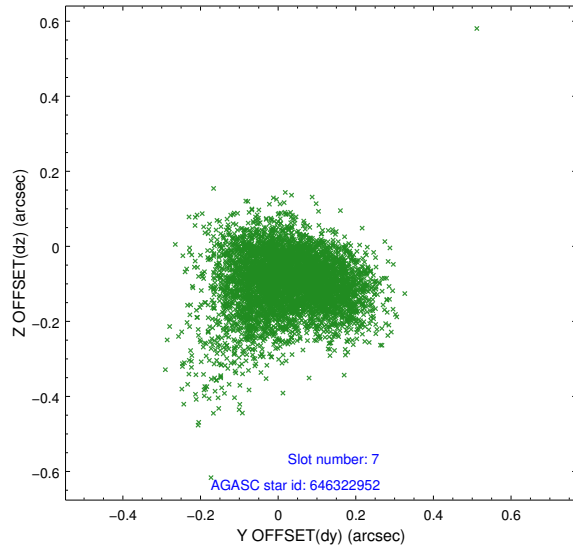
2.4.3 Slot 5



2.4.4 Slot 6

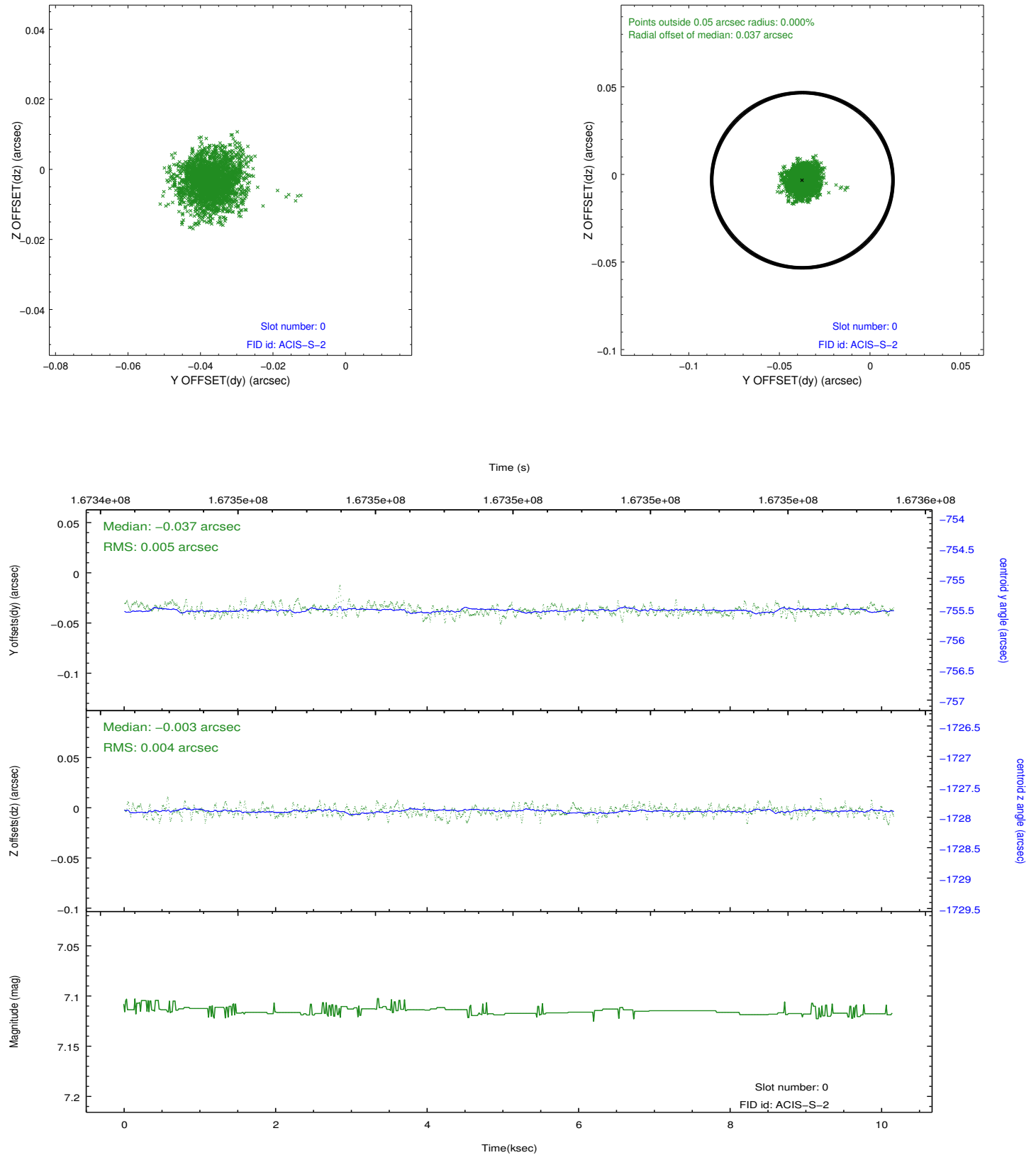


2.4.5 Slot 7

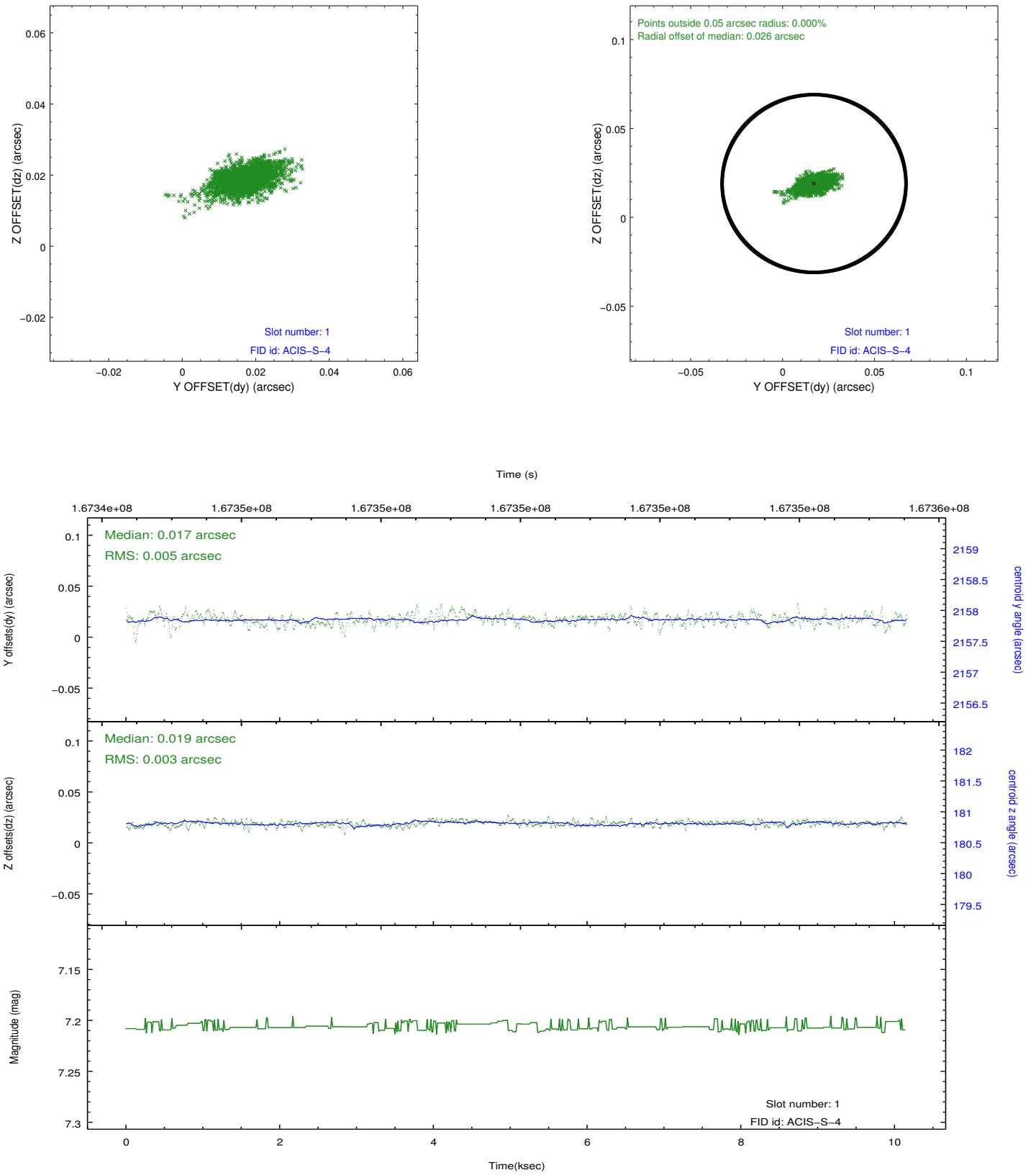


2.5 FID Slots

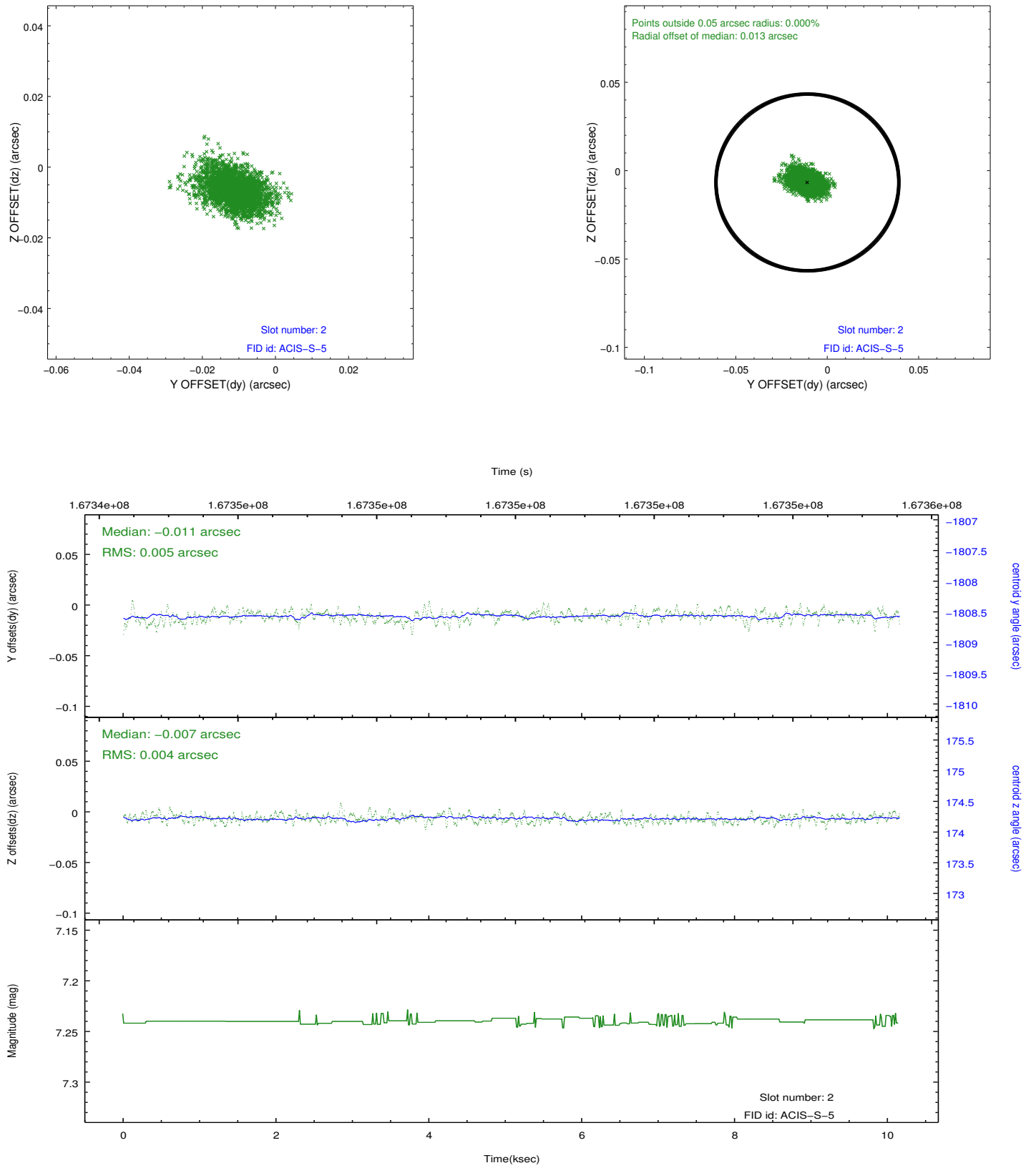
2.5.1 Slot 0



2.5.2 Slot 1



2.5.3 Slot 2



A Summary

A.1 Status

V&V Scientist	Jen Lauer
V&V Date (YYYY-MM-DD)	2012.11.14
V&V Edition	1
V&V Disposition and Status	OK
V&V Charge Time	10.15

A.2 Comments