

# V&V Reference Report

## L2 ASCDS Version : 8.4.5

Observation 4136 - L2 Version 3  
Chandra X-Ray Center

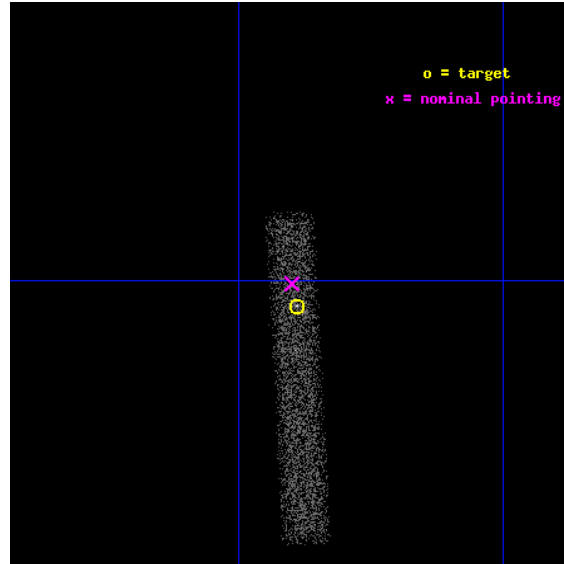
L2 Processing Date : Oct 21 2012

## Contents

<b>1</b>	<b>Front</b>	<b>2</b>
<b>2</b>	<b>OBI</b>	<b>3</b>
2.1	OBI . . . . .	3
2.1.1	Images . . . . .	3
2.1.2	Bias . . . . .	3
2.1.3	Parameters . . . . .	4
2.1.4	Events . . . . .	4
2.2	Compared Parameters . . . . .	5
2.3	Aspect . . . . .	6
2.4	Star Slots . . . . .	9
2.4.1	Slot 3 . . . . .	9
2.4.2	Slot 4 . . . . .	10
2.4.3	Slot 5 . . . . .	11
2.4.4	Slot 6 . . . . .	12
2.4.5	Slot 7 . . . . .	13
2.5	FID Slots . . . . .	14
2.5.1	Slot 0 . . . . .	14
2.5.2	Slot 1 . . . . .	15
2.5.3	Slot 2 . . . . .	16
<b>A</b>	<b>Summary</b>	<b>17</b>
A.1	Status . . . . .	17
A.2	Comments . . . . .	17

# 1 Front

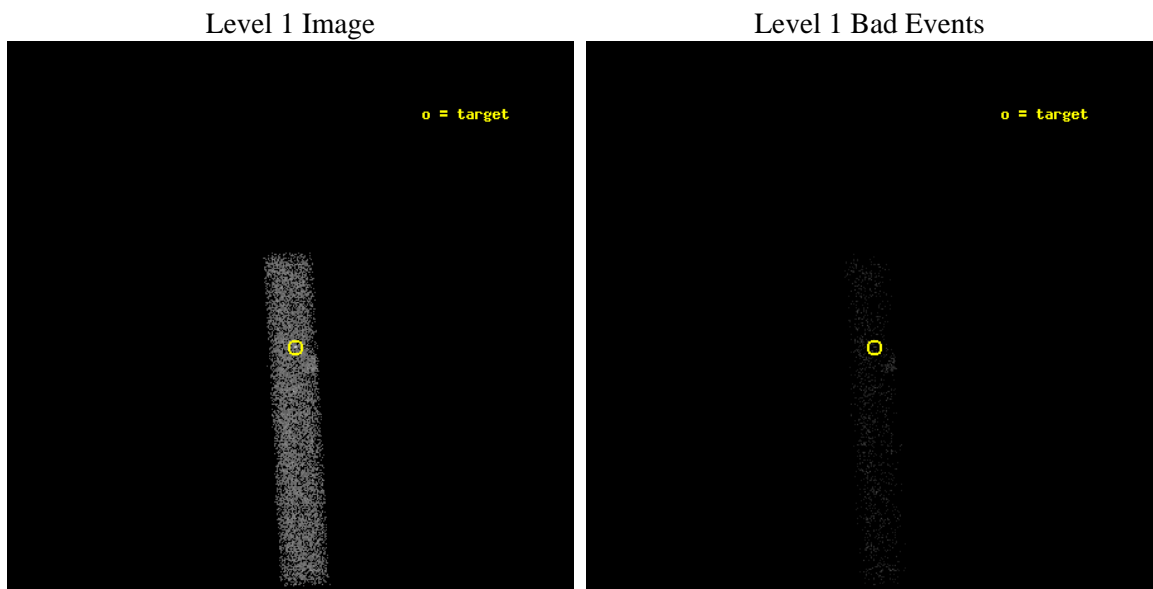
seq_num	700815	Sequence number
obs_id	4136	Observation id
title	CHANDRA OBSERVATIONS OF THE FIRST SAMPLE OF RADIO-LOUD NARROW LINE SEYFERT I GALAXIES	Proposal title
observer	Dr. Sally Laurent-Muehleisen	Principal investigator
object	FIRST J110223+223920	Source name
dtcycle	0	&#160
cycle	P	events from which exps? Prim/Second/Both
ra_targ	165.5975	Observer's specified target RA [deg]
dec_targ	22.65575	Observer's specified target Dec [deg]
ra_nom	165.59987922752	Nominal RA [deg]
dec_nom	22.665159327969	Nominal Dec [deg]
roll_nom	86.979643563487	Nominal Roll [deg]
revision	3	Processing version of data
ontime	9978.4001486599	Sum of GTIs [s]
livetime	9049.8822316887	Livetime [s]
ontime7	9978.4001486599	Sum of GTIs [s]
l2events	6172	Number of level 2 events



## 2 OBI

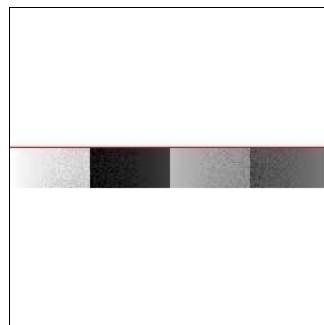
### 2.1 OBI

#### 2.1.1 Images



#### 2.1.2 Bias

Chip 7



### 2.1.3 Parameters

obi_num	0	Obi number	sched_exp_time	9847.376000	[s] Scheduled observation exposure time
ascdsver	8.4.5	Processing system revision	ontime	9978.4001486599	Sum of GTIs [s]
caldsver	4.5.2	&#160	ontime7	9978.4001486599	Sum of GTIs [s]
date	2012-10-21T03:14:56	Date and time of file creation	l1events	13408	Number of level 1 events
revision	3	Processing version of data			

### 2.1.4 Events

	<b>ccd 7</b>
level 1 events	13408
rejected events	7016
rejected %	52%

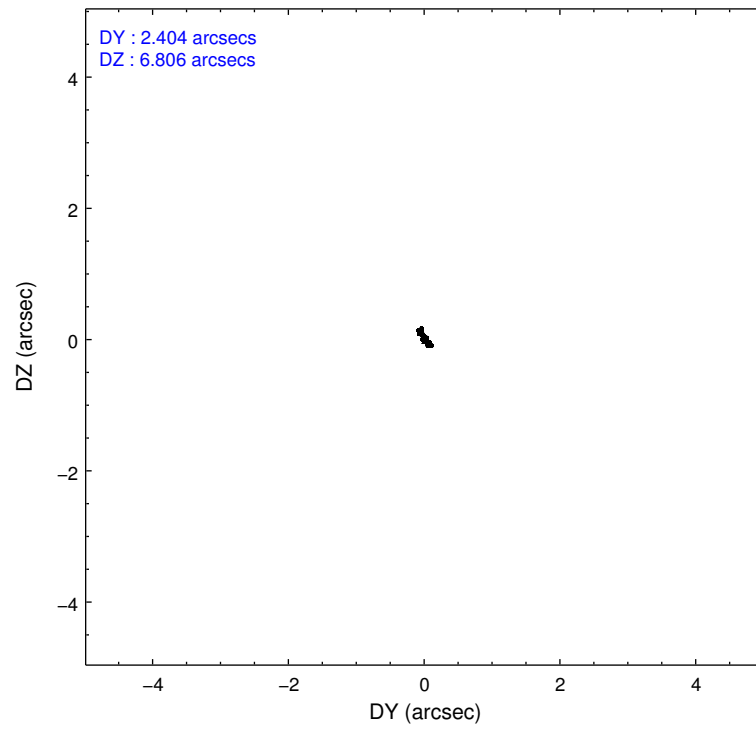
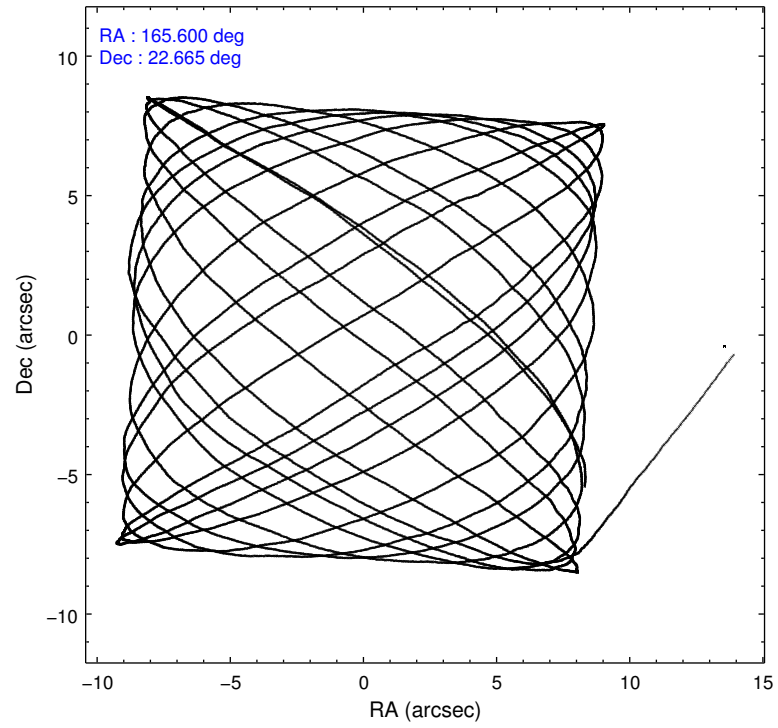
	<b>ccd 7</b>
grade 0 events	939
	7%
grade 1 events	11
	0%
grade 2 events	1335
	9%
grade 3 events	844
	6%
grade 4 events	810
	6%
grade 5 events	1113
	8%
grade 6 events	2934
	21%
grade 7 events	5422
	40%

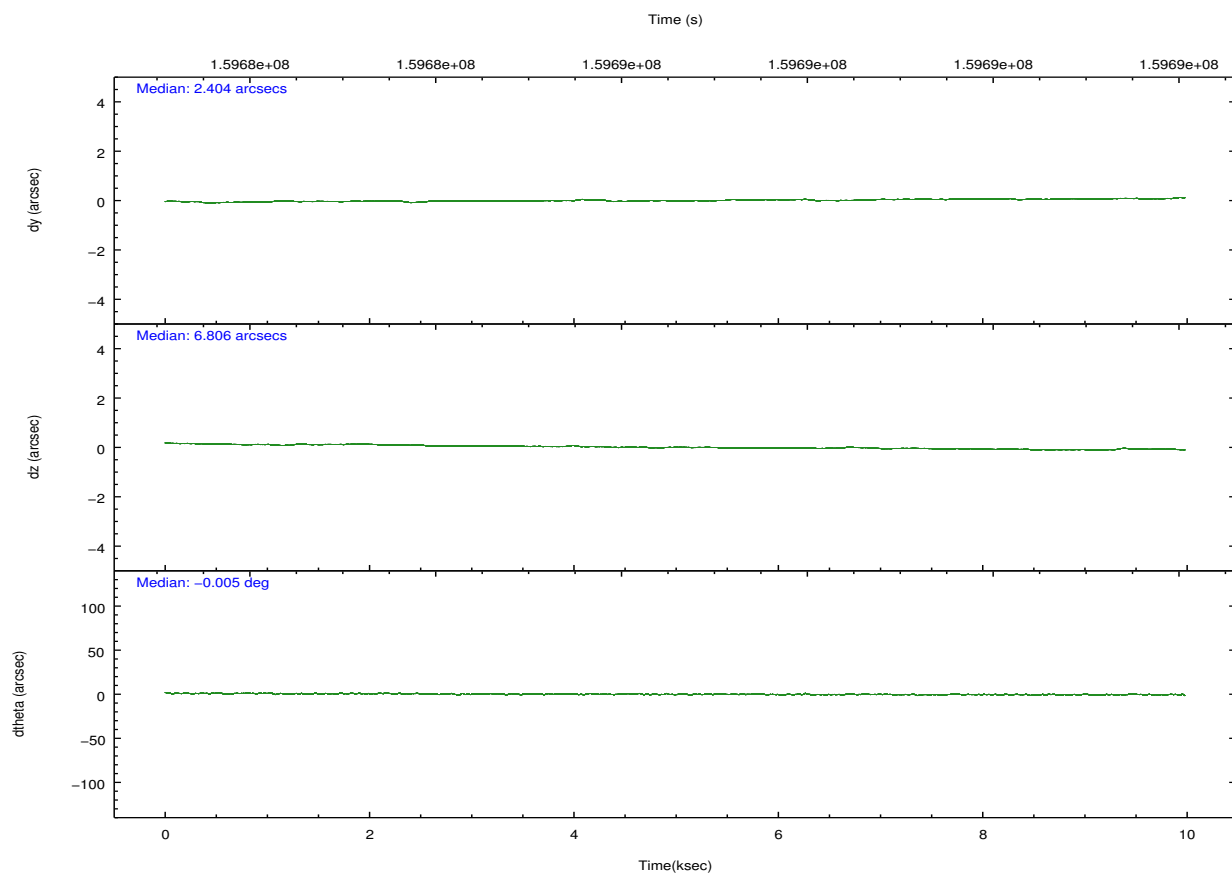
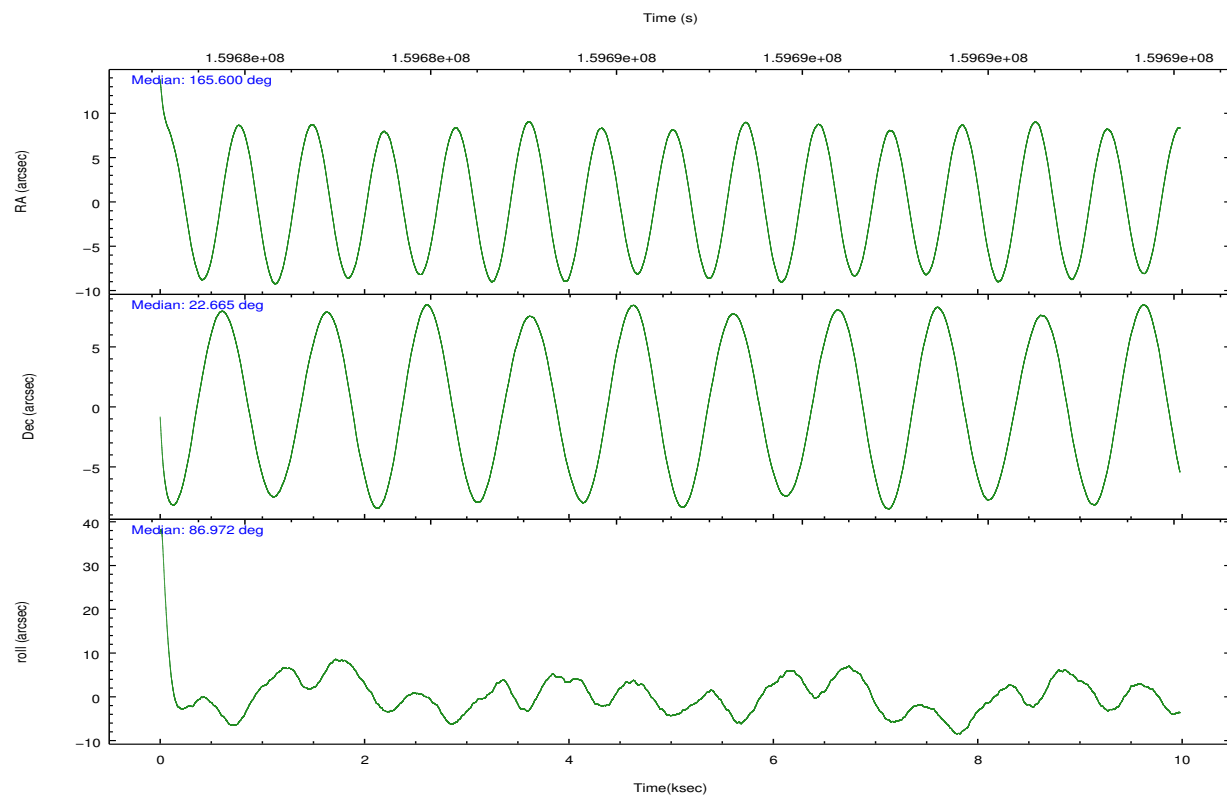


## 2.2 Compared Parameters

Parameter	Planned	Actual	Parameter	Planned	Actual
Instrument	ACIS	ACIS	Obspar format version number	7	7
Detector	ACIS-7	ACIS-7	Obspar file type	PREDICTED	ACTUAL
Grating	NONE	NONE	Obspar update status	NONE	UPDATED
Data mode	FAINT	FAINT	Number of optional ACIS chips dropped	0	0
Observation mode	POINTING	POINTING	On-chip summing requested	N	N
[deg] Pointing RA	165.613621	165.5998792275242	Subarray requested	CUSTOM	1/8
[deg] Pointing Dec	22.641072	22.66515932796916	Subarray start row	449	449
[deg] Pointing Roll	86.817664	86.97964356348704	Subarray row count	128	128
[mm] SIM focus pos	-0.684267	-0.6828225247311905	Alternating exposures requested	N	N
[mm] SIM defocus	0	0.001444936568705701	[s] Primary exposure time	0.000000	0.4
[mm] SIM translation stage pos	-190.132523	-190.1425803651734			
[mm] SIM translation stage offset	0	0.01005778216563158			
[s] Observation start time (MET)	159681715.184000	159680648.70986			
Observation start date	2003-01-23T04:00:51	2003-01-23T03:44:08			
[s] Observation end time (MET)	159691563.184000	159691877.07283			
Observation end date	2003-01-23T06:44:59	2003-01-23T06:51:17			
Read mode	TIMED	TIMED			

## 2.3 Aspect



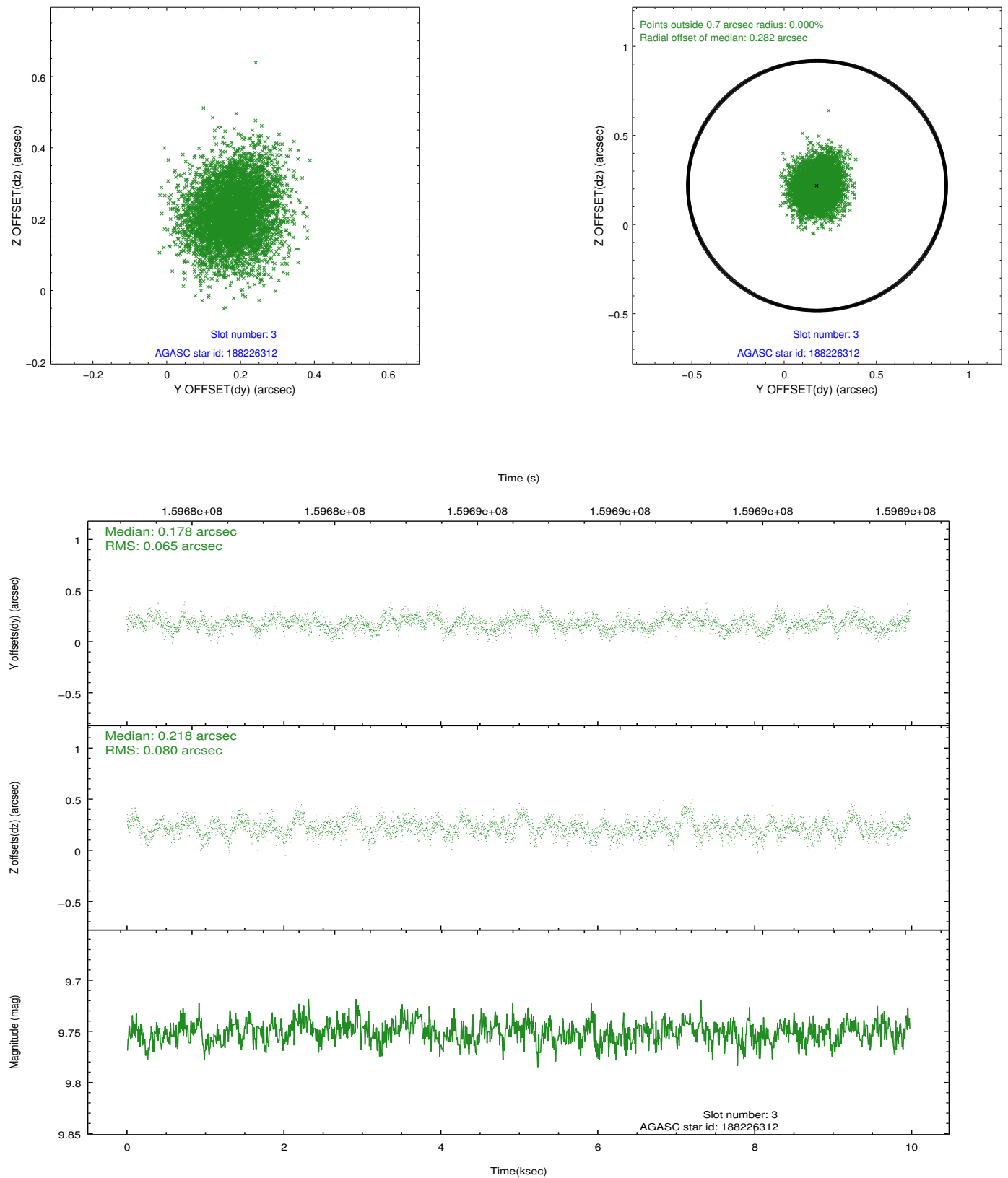


### Slot Statistics

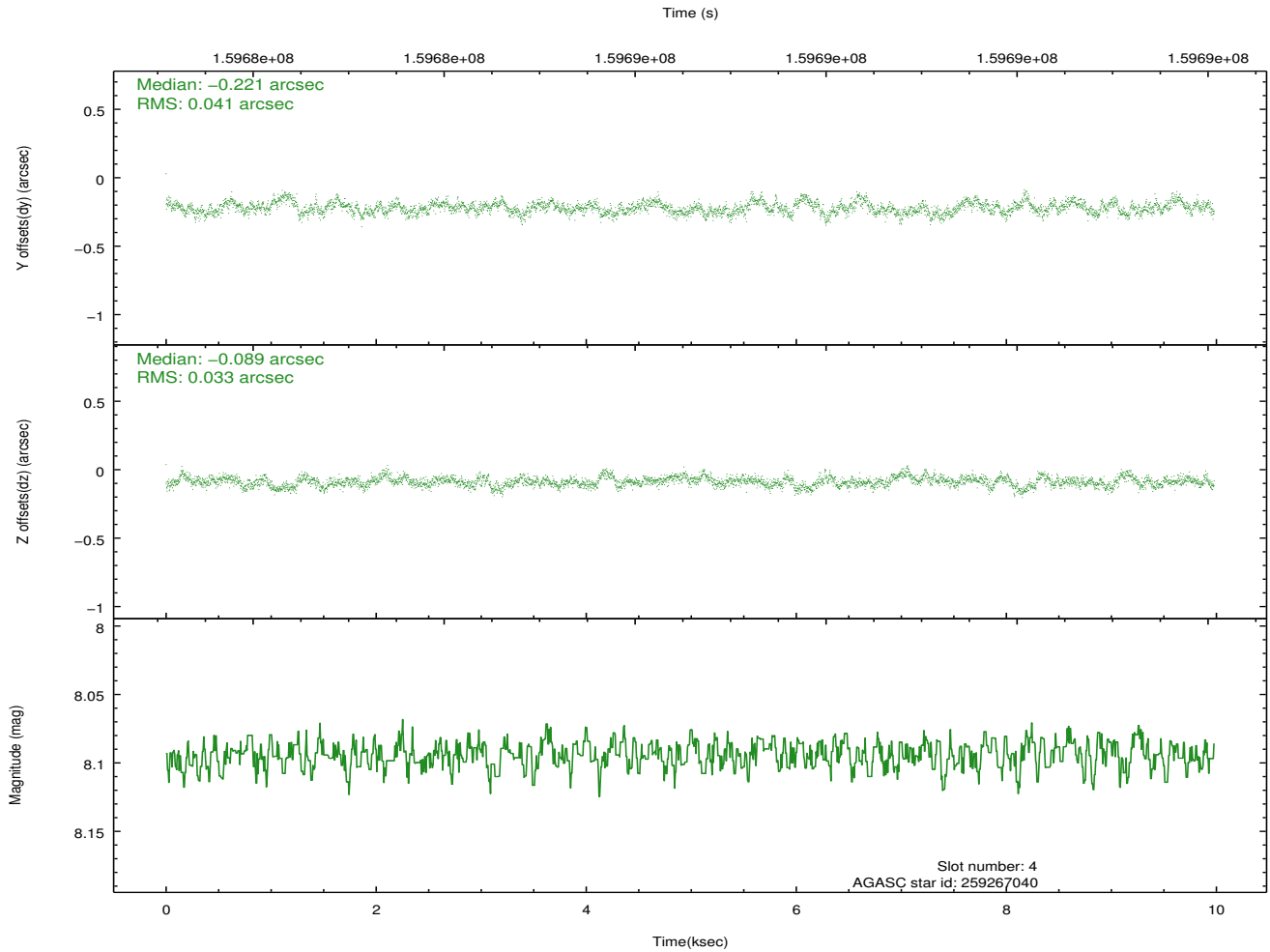
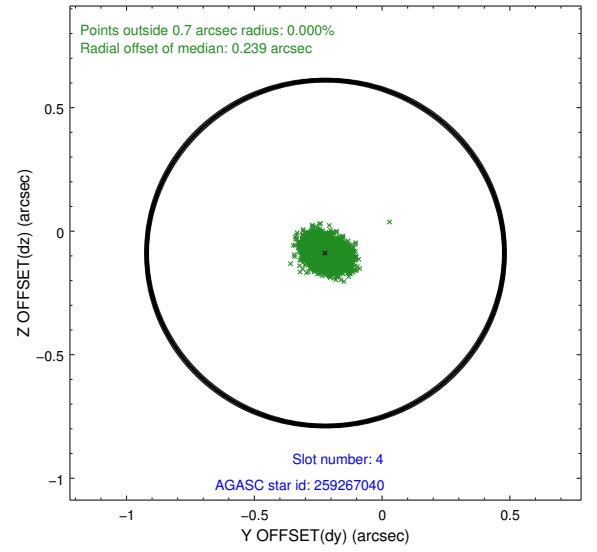
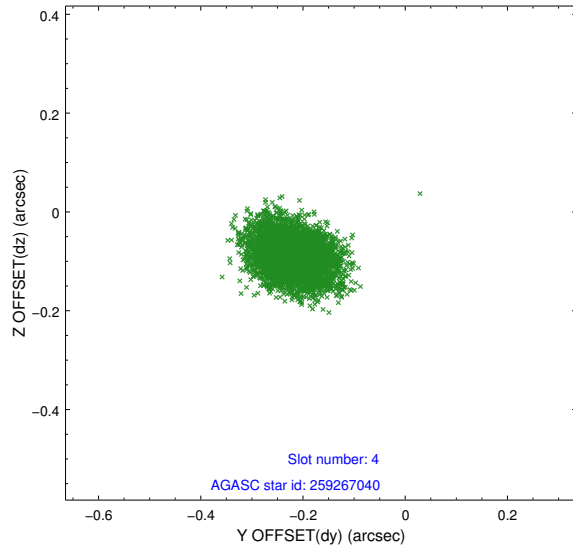
slot	status	id	mag	n_pts	med_dy	med_dz	dr1	dr2	ra	dec	mean_y	mean_z
0	FID	ACIS-S-2	7.12	2433	-0.034	-0.002	0.007	0.011	0.000000	0.000000	-755.05	-1727.94
1	FID	ACIS-S-4	7.21	2433	-0.013	0.017	0.006	0.011	0.000000	0.000000	2157.98	180.05
2	FID	ACIS-S-5	7.24	2433	0.017	-0.006	0.007	0.011	0.000000	0.000000	-1807.18	174.25
3	GUIDE	188226312	9.75	4869	0.178	0.218	0.110	0.178	166.145280	22.125762	-1750.23	-1872.90
4	GUIDE	259267040	8.09	4869	-0.221	-0.089	0.055	0.093	165.215267	23.300173	2297.04	1447.10
5	GUIDE	259276016	9.81	4868	-0.094	0.092	0.092	0.152	166.007262	23.045276	1527.68	-1220.16
6	GUIDE	188091064	7.14	4868	0.095	-0.114	0.064	0.106	165.010632	22.026047	-2318.17	1886.28
7	GUIDE	259276648	9.70	4812	0.034	-0.108	0.111	0.197	165.395795	23.006130	1272.19	794.49

## 2.4 Star Slots

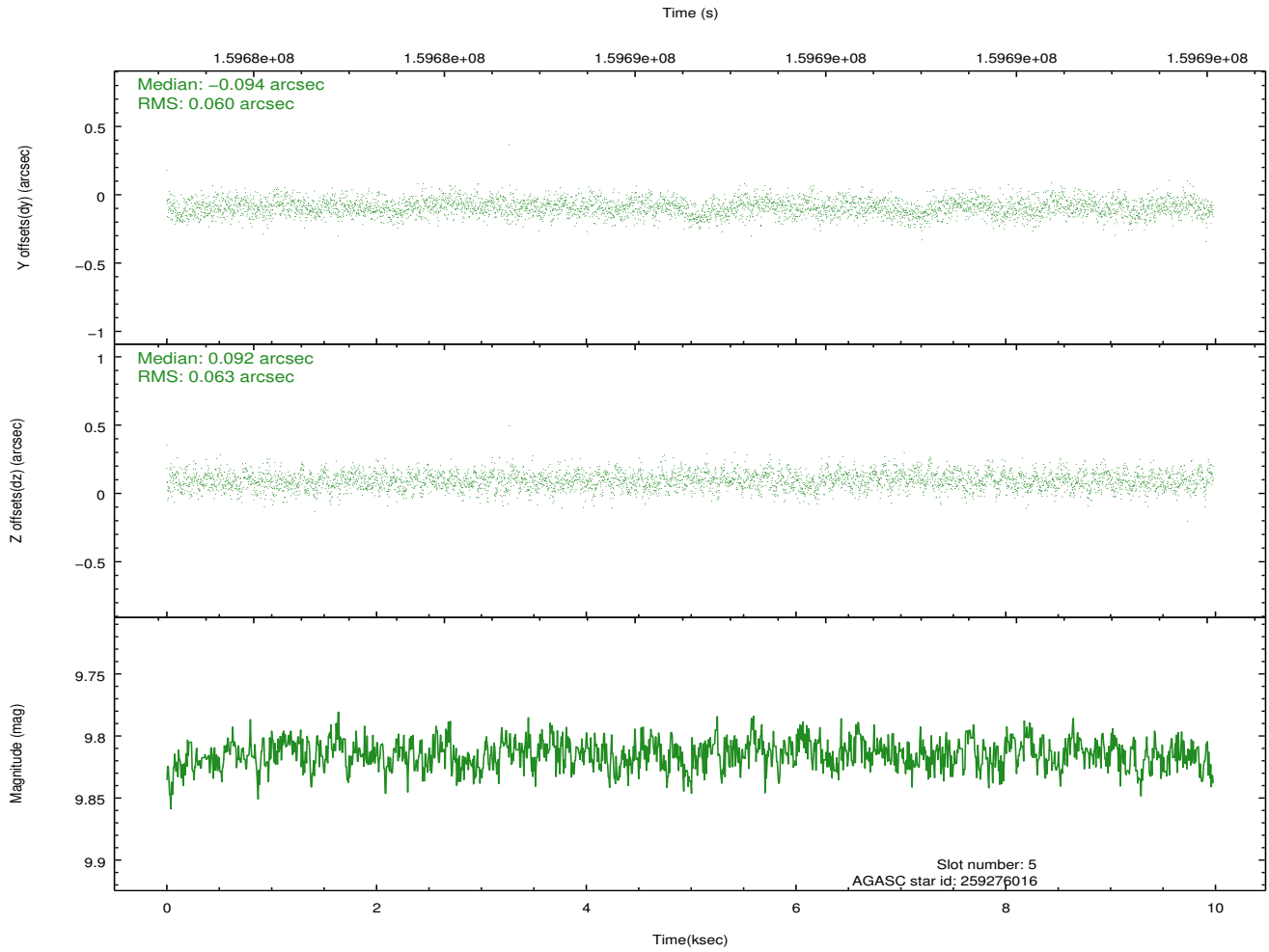
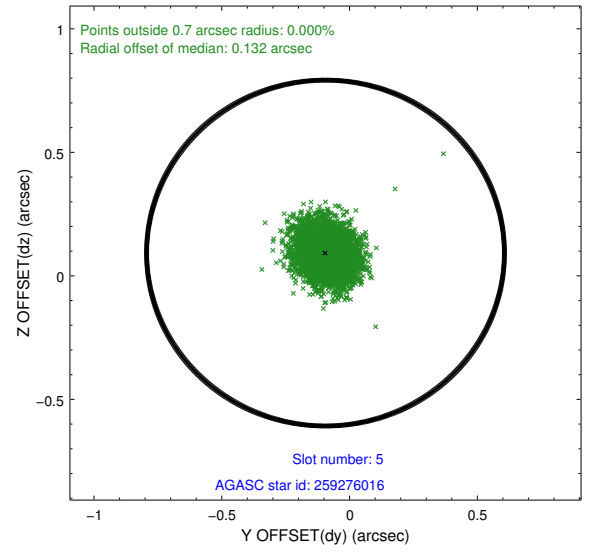
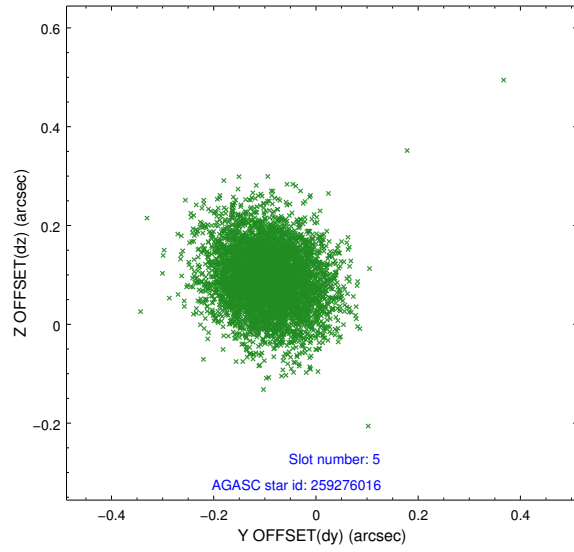
### 2.4.1 Slot 3



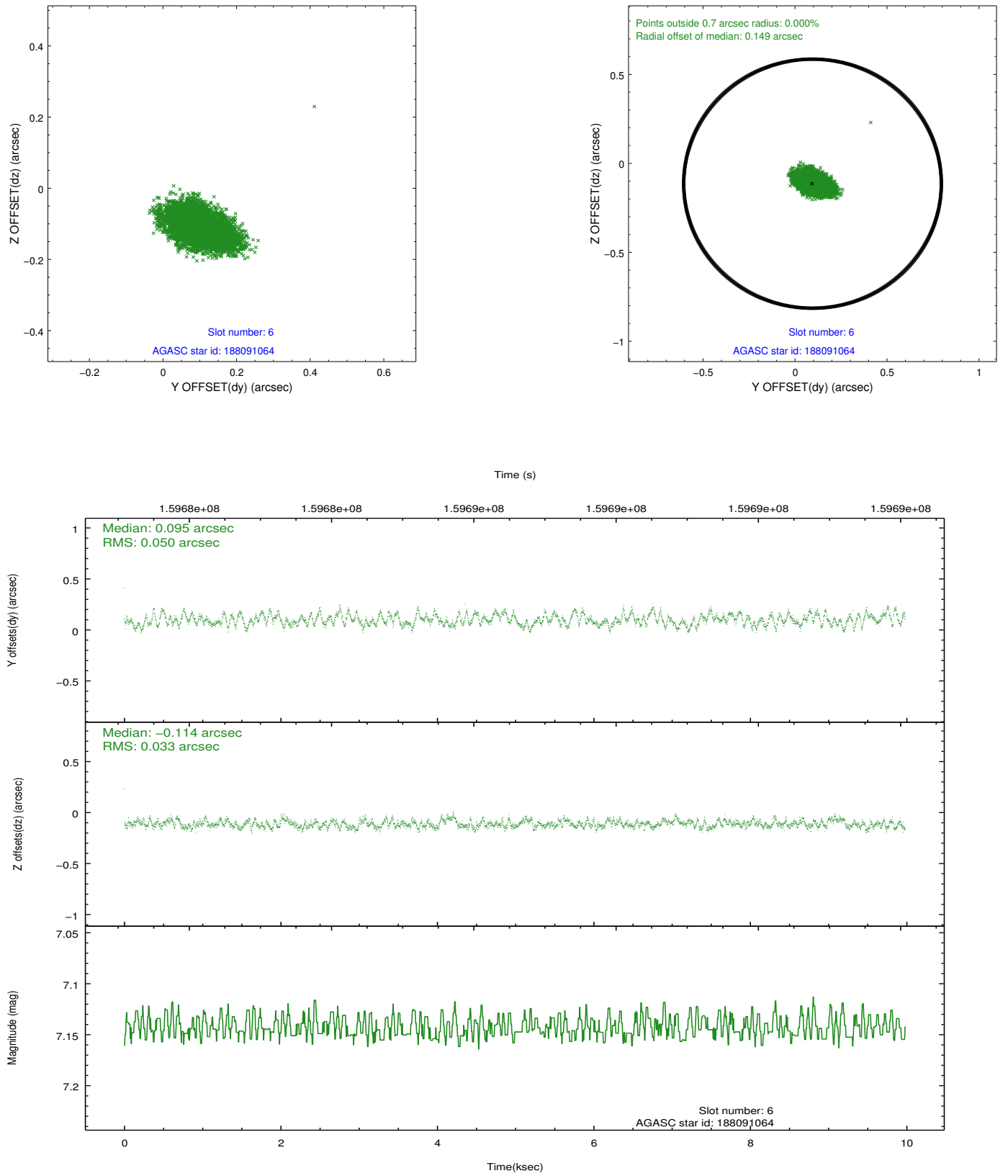
## 2.4.2 Slot 4



### 2.4.3 Slot 5

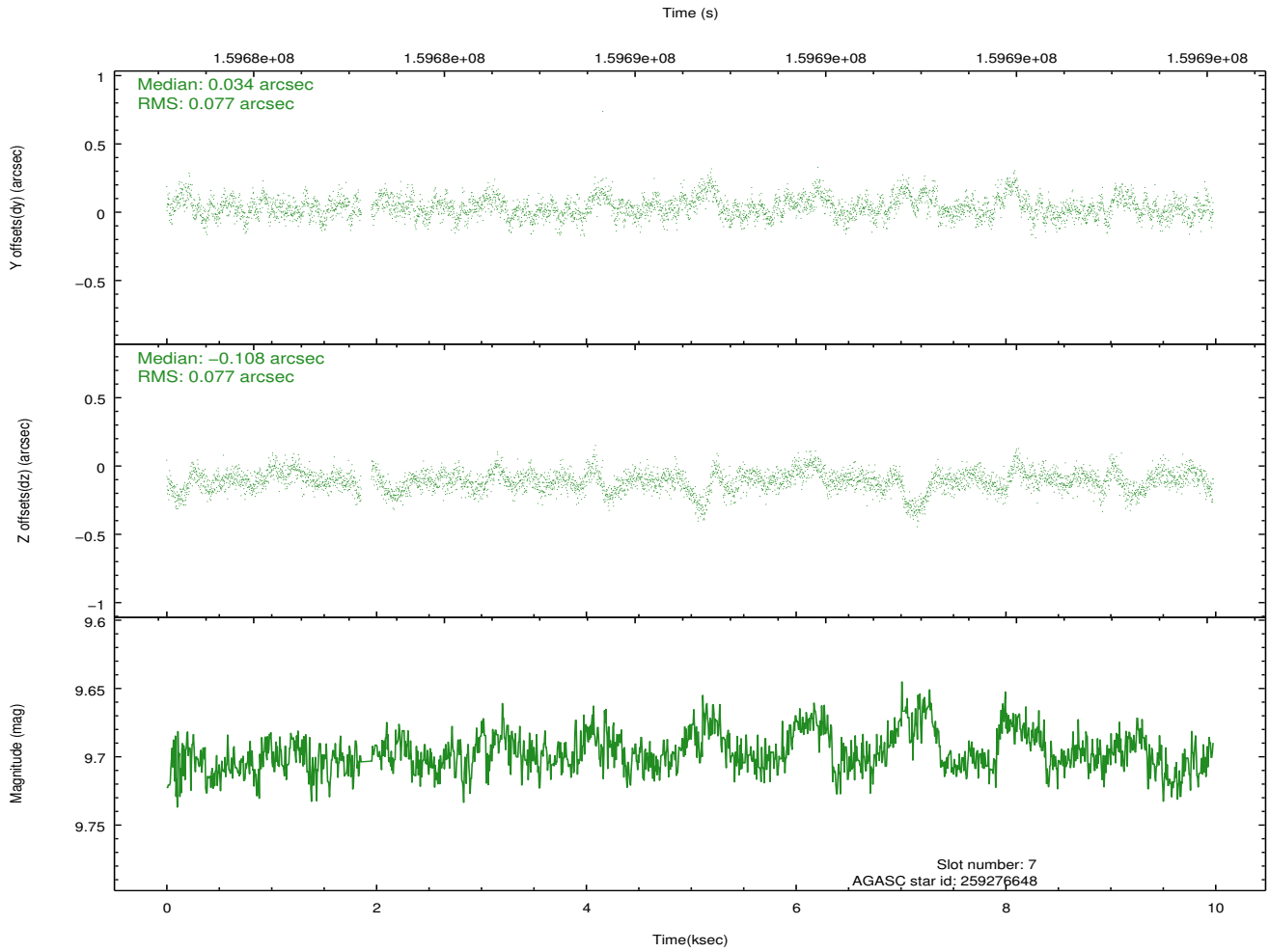
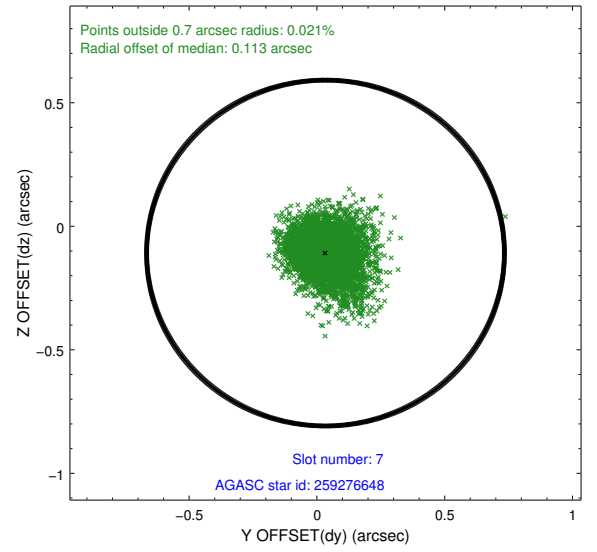
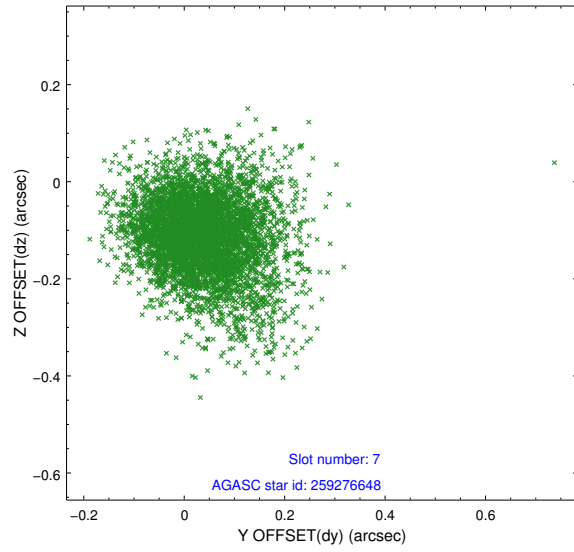


## 2.4.4 Slot 6



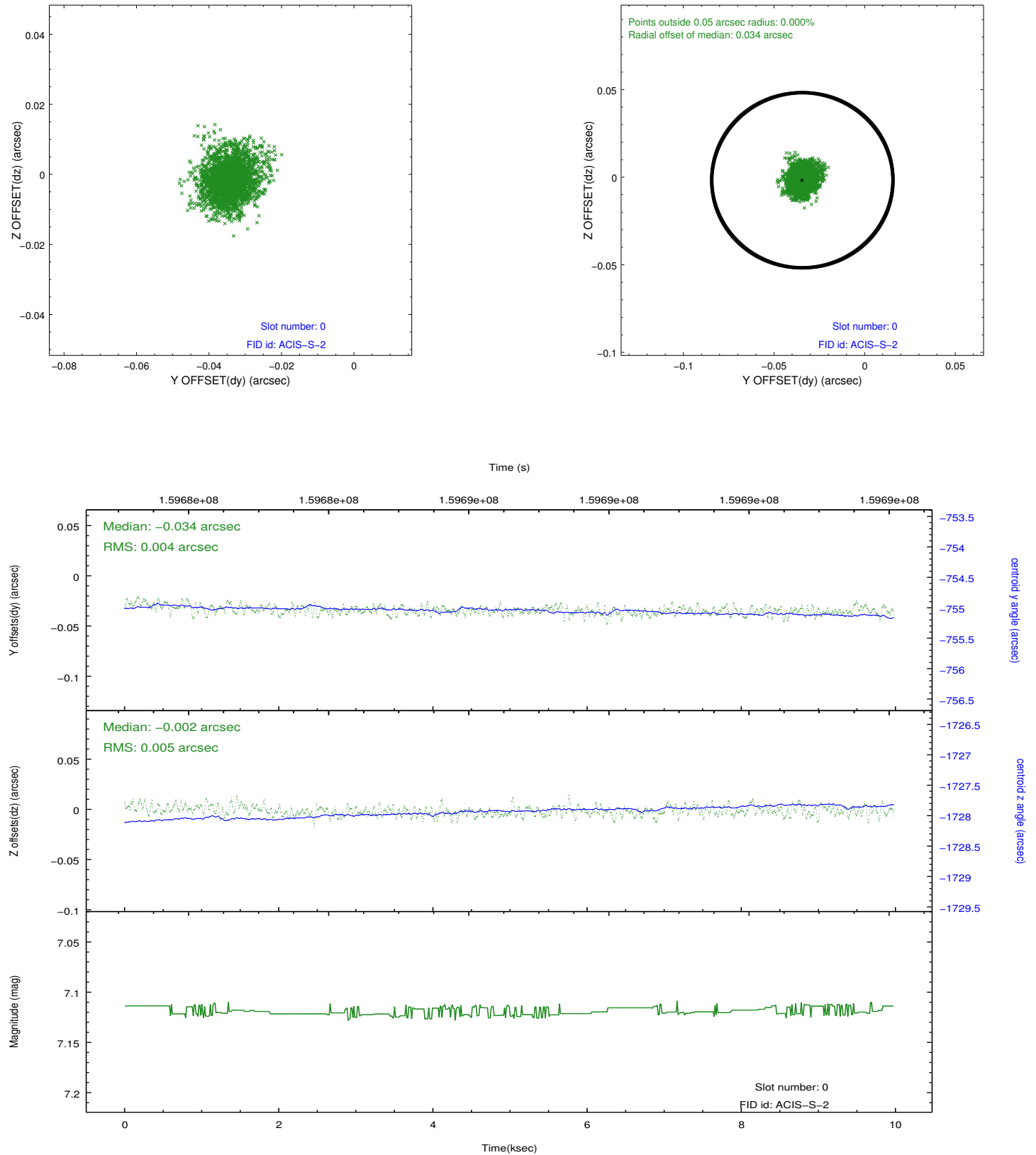


## 2.4.5 Slot 7

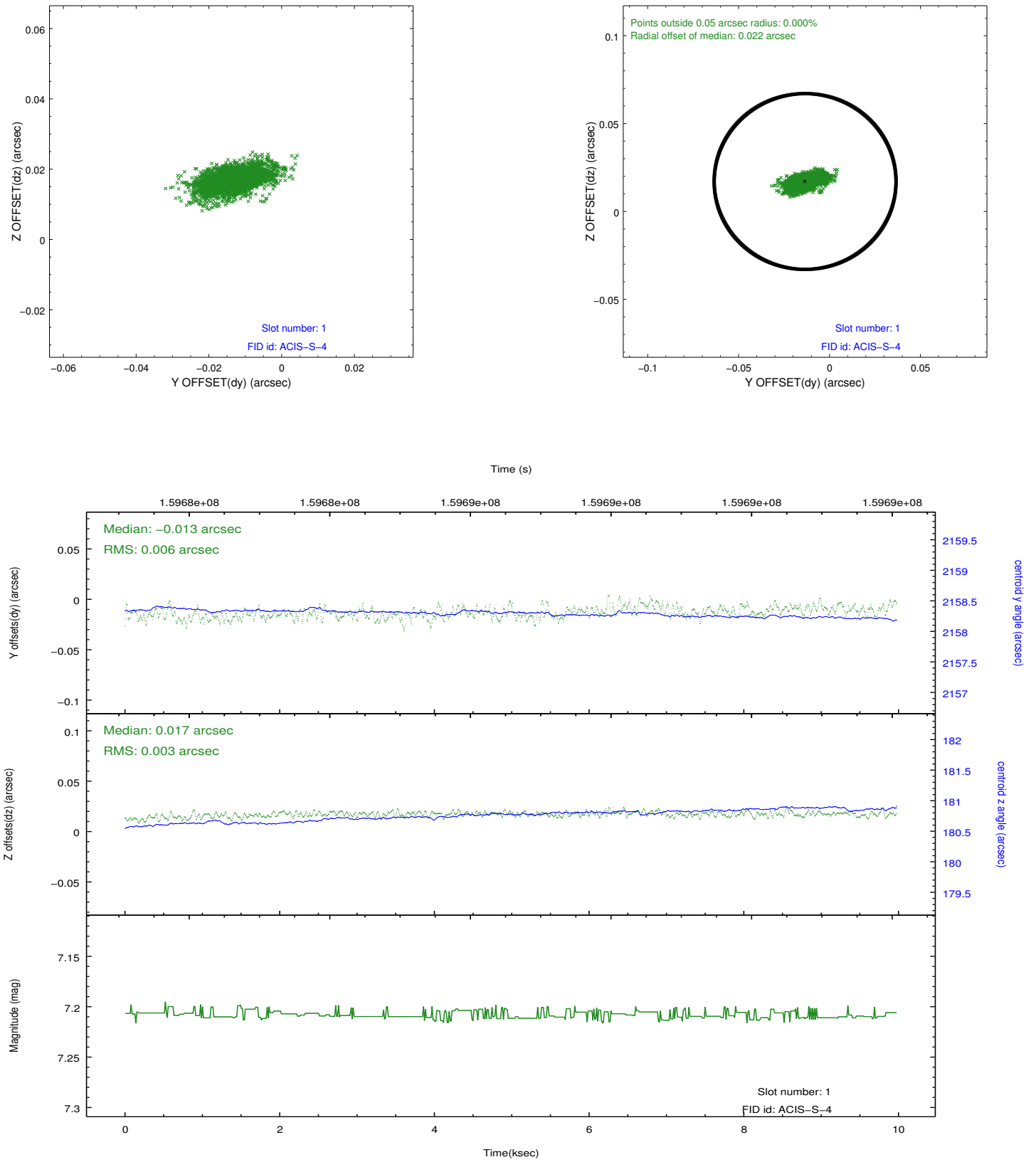


## 2.5 FID Slots

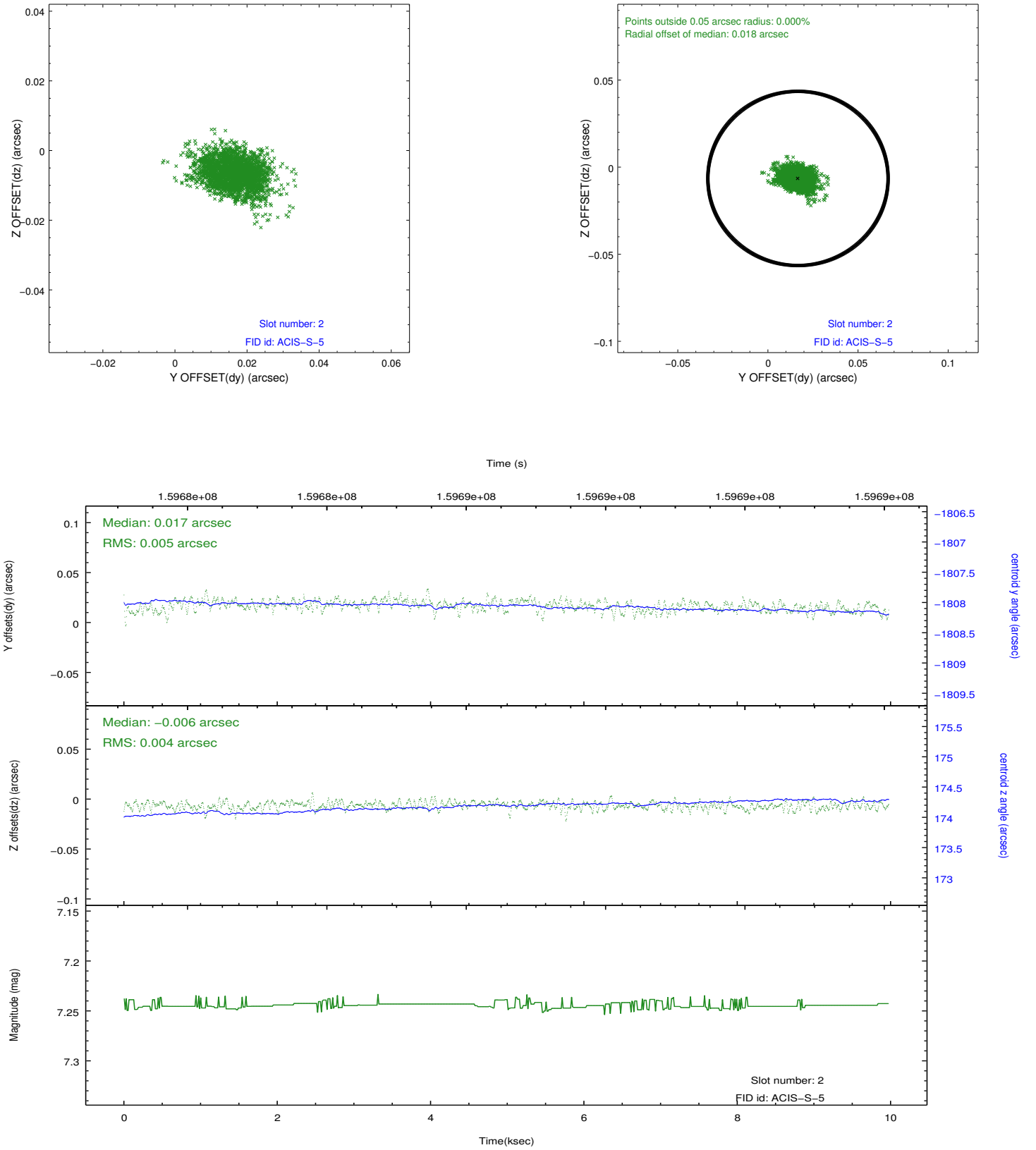
### 2.5.1 Slot 0



## 2.5.2 Slot 1



### 2.5.3 Slot 2



## A Summary

### A.1 Status

V&V Scientist	Jen Lauer
V&V Date (YYYY-MM-DD)	2012.11.01
V&V Edition	1
V&V Disposition and Status	OK
V&V Charge Time	9.978

### A.2 Comments