

V&V Reference Report

L2 ASCDS Version : 8.4.5

Observation 4135 - L2 Version 3
Chandra X-Ray Center

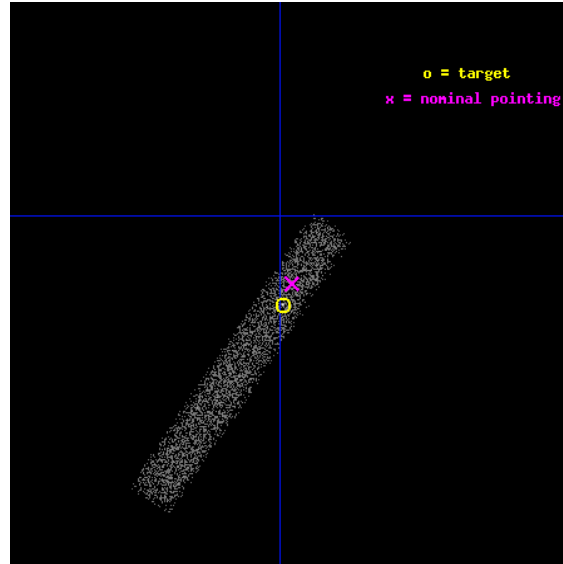
L2 Processing Date : Oct 21 2012

Contents

1	Front	2
2	OBI	3
2.1	OBI	3
2.1.1	Images	3
2.1.2	Bias	3
2.1.3	Parameters	4
2.1.4	Events	4
2.2	Compared Parameters	5
2.3	Aspect	6
2.4	Star Slots	9
2.4.1	Slot 3	9
2.4.2	Slot 4	10
2.4.3	Slot 5	11
2.4.4	Slot 6	12
2.4.5	Slot 7	13
2.5	FID Slots	14
2.5.1	Slot 0	14
2.5.2	Slot 1	15
2.5.3	Slot 2	16
A	Summary	17
A.1	Status	17
A.2	Comments	17

1 Front

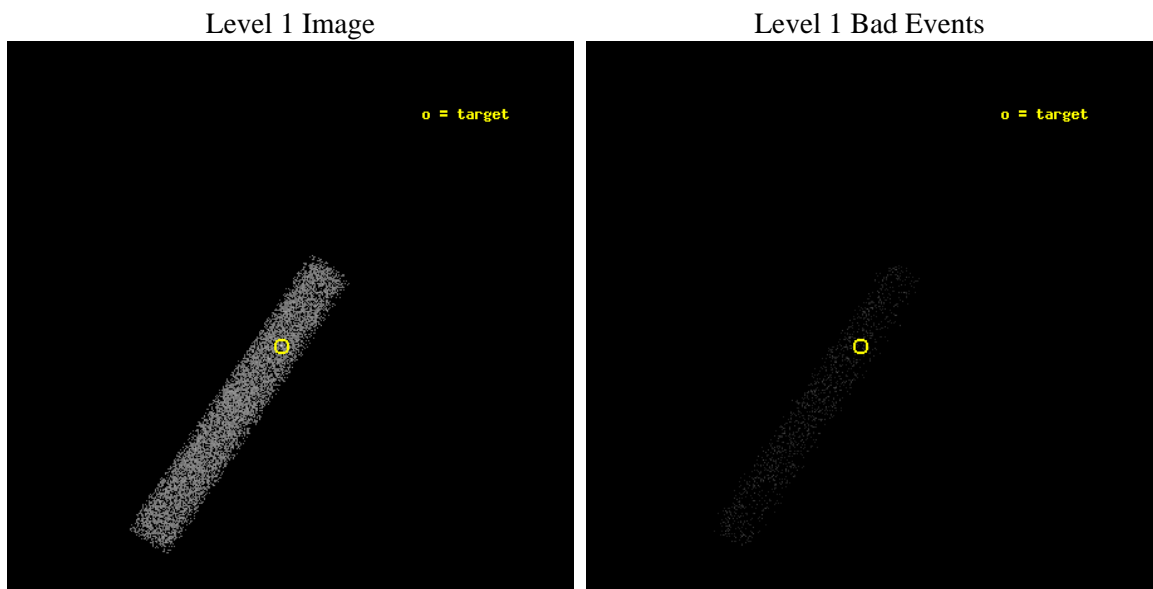
seq_num	700814	Sequence number
obs_id	4135	Observation id
title	CHANDRA OBSERVATIONS OF THE FIRST SAMPLE OF RADIO-LOUD NARROW LINE SEYFERT I GALAXIES	Proposal title
observer	Dr. Sally Laurent-Muehleisen	Principal investigator
object	FIRST J103859+422742	Source name
dtcycle	0	
cycle	P	events from which exps? Prim/Second/Both
ra_targ	159.748333	Observer's specified target RA [deg]
dec_targ	42.461667	Observer's specified target Dec [deg]
ra_nom	159.74302055238	Nominal RA [deg]
dec_nom	42.470542798843	Nominal Dec [deg]
roll_nom	123.86257041532	Nominal Roll [deg]
revision	3	Processing version of data
ontime	10714.000159621	Sum of GTIs [s]
livetime	9717.0326134784	Livetime [s]
ontime7	10714.000159621	Sum of GTIs [s]
l2events	5159	Number of level 2 events



2 OBI

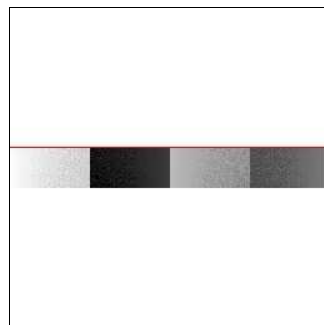
2.1 OBI

2.1.1 Images



2.1.2 Bias

Chip 7



2.1.3 Parameters

obi_num	0	Obi number	sched_exp_time	10000.000000	[s] Scheduled observation exposure time
ascdsver	8.4.5	Processing system revision	ontime	10714.000159621	Sum of GTIs [s]
caldsver	4.5.2	 	ontime7	10714.000159621	Sum of GTIs [s]
date	2012-10-21T05:13:17	Date and time of file creation	l1events	11401	Number of level 1 events
revision	3	Processing version of data			

2.1.4 Events

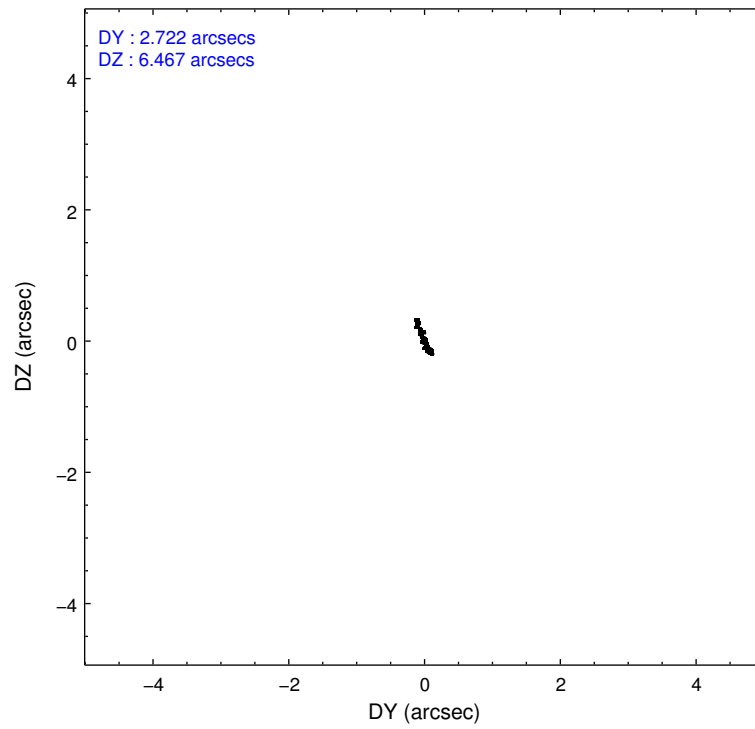
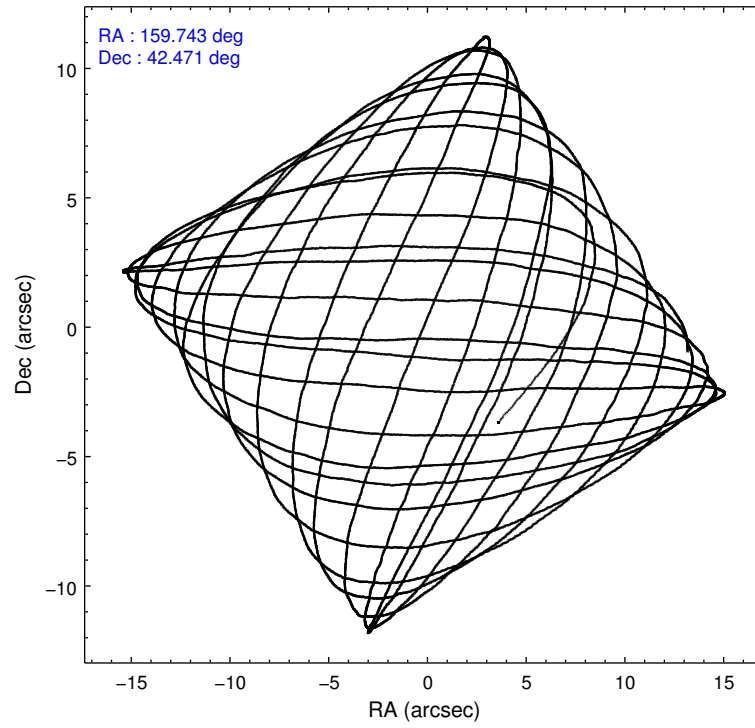
	ccd 7
level 1 events	11401
rejected events	6027
rejected %	52%

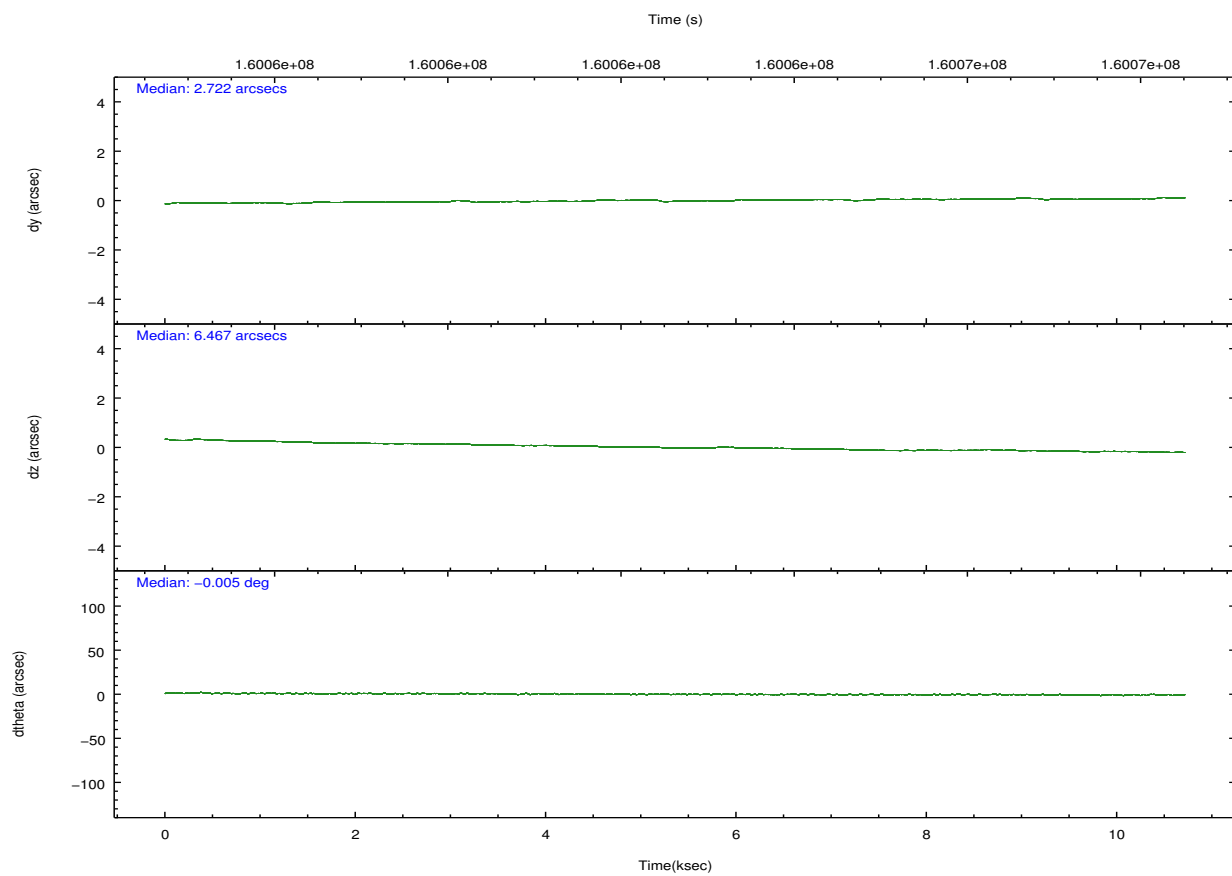
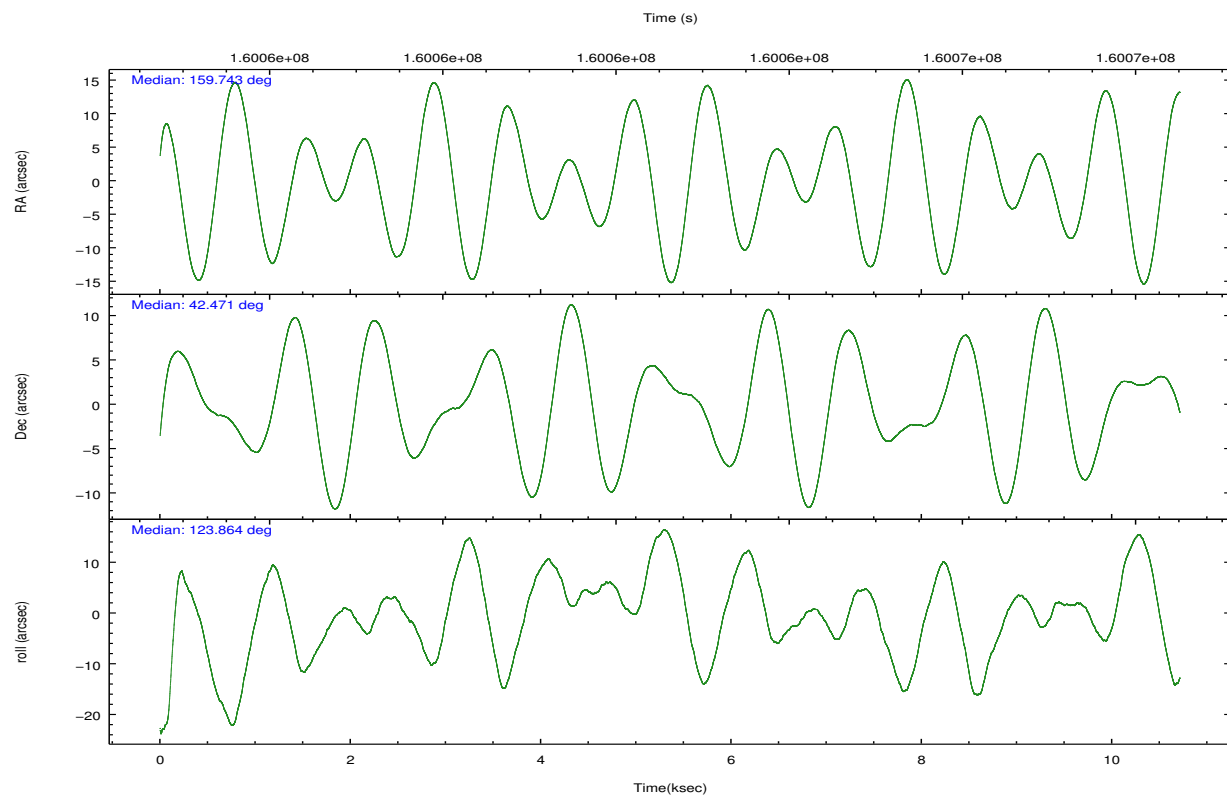
	ccd 7
grade 0 events	638
	5%
grade 1 events	15
	0%
grade 2 events	1074
	9%
grade 3 events	691
	6%
grade 4 events	697
	6%
grade 5 events	1059
	9%
grade 6 events	2326
	20%
grade 7 events	4901
	42%

2.2 Compared Parameters

Parameter	Planned	Actual	Parameter	Planned	Actual
Instrument	ACIS	ACIS	Obspar format version number	7	7
Detector	ACIS-7	ACIS-7	Obspar file type	PREDICTED	ACTUAL
Grating	NONE	NONE	Obspar update status	NONE	UPDATED
Data mode	FAINT	FAINT	Number of optional ACIS chips dropped	0	0
Observation mode	POINTING	POINTING	On-chip summing requested	N	N
[deg] Pointing RA	159.776409	159.7430205523785	Subarray requested	CUSTOM	1/8
[deg] Pointing Dec	42.458845	42.47054279884312	Subarray start row	449	449
[deg] Pointing Roll	123.683398	123.8625704153152	Subarray row count	128	128
[mm] SIM focus pos	-0.684267	-0.6828225247311905	Alternating exposures requested	N	N
[mm] SIM defocus	0	0.001444936568705701	[s] Primary exposure time	0.000000	0.4
[mm] SIM translation stage pos	-190.132523	-190.1425803651734			
[mm] SIM translation stage offset	0	0.01005778216563158			
[s] Observation start time (MET)	160057981.184000	160056755.56312			
Observation start date	2003-01-27T12:31:57	2003-01-27T12:12:35			
[s] Observation end time (MET)	160067981.184000	160068495.40111			
Observation end date	2003-01-27T15:18:37	2003-01-27T15:28:15			
Read mode	TIMED	TIMED			

2.3 Aspect



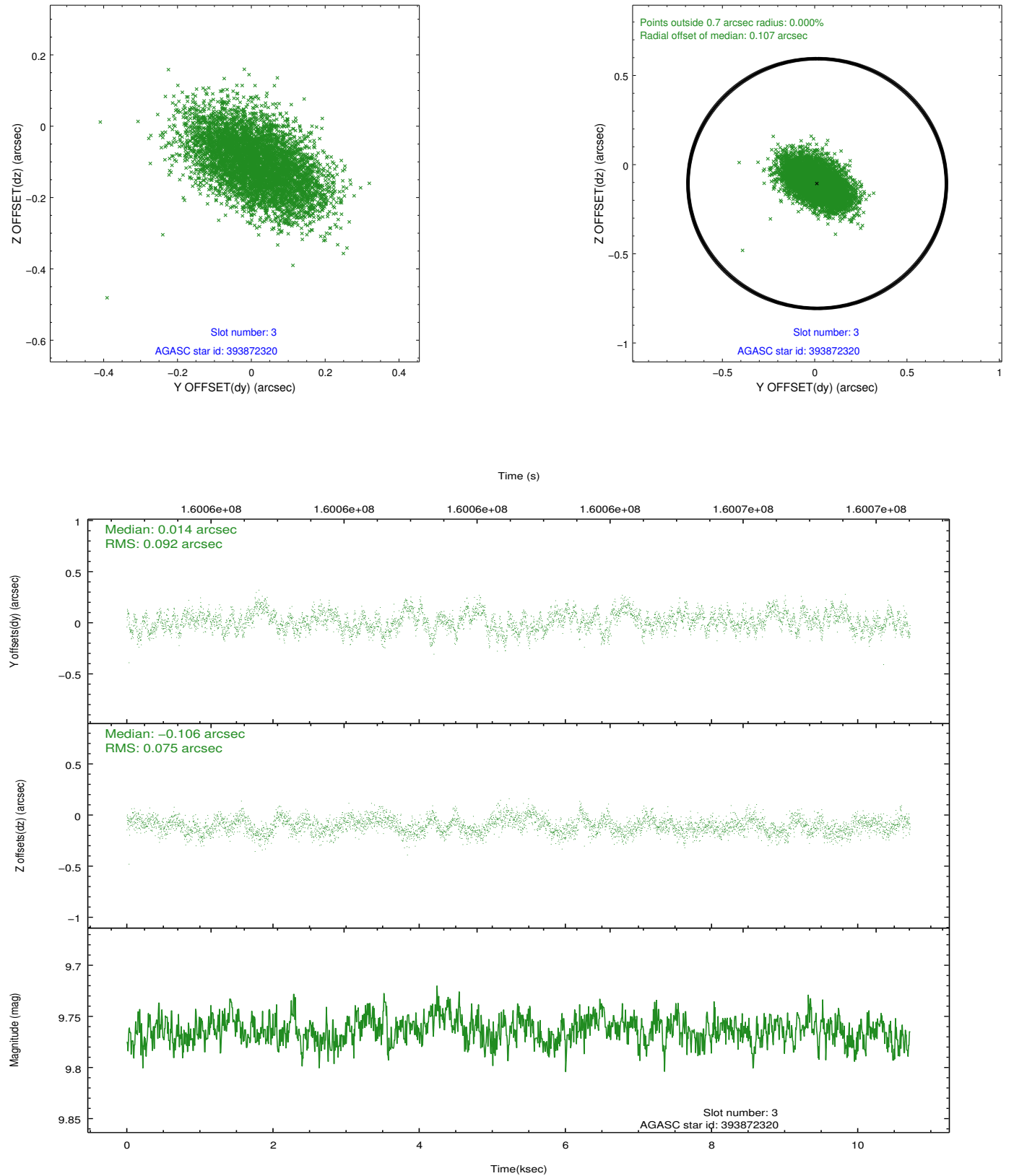


Slot Statistics

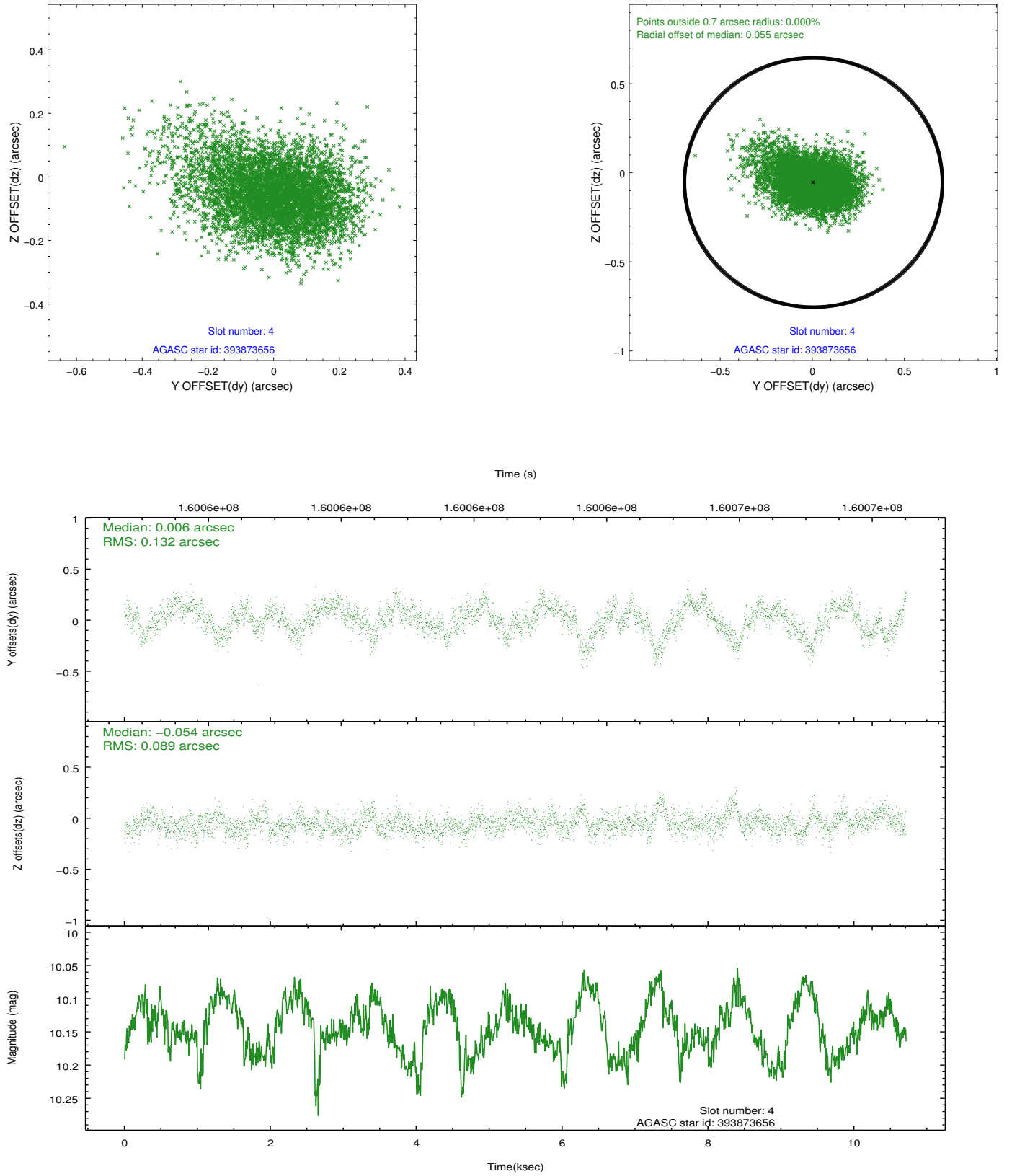
slot	status	id	mag	n_pts	med_dy	med_dz	dr1	dr2	ra	dec	mean_y	mean_z
0	FID	ACIS-S-2	7.11	2614	-0.037	0.004	0.007	0.013	0.000000	0.000000	-755.35	-1727.60
1	FID	ACIS-S-4	7.20	2614	-0.004	0.017	0.007	0.012	0.000000	0.000000	2157.70	180.45
2	FID	ACIS-S-5	7.24	2614	0.009	-0.012	0.006	0.011	0.000000	0.000000	-1807.56	174.57
3	GUIDE	393872320	9.76	5221	0.014	-0.106	0.125	0.208	159.885953	41.990128	-1566.43	691.97
4	GUIDE	393873656	10.14	5222	0.006	-0.054	0.164	0.285	159.925292	42.201995	-989.59	182.55
5	GUIDE	394265432	10.30	5206	-0.001	0.107	0.168	0.284	159.834089	42.842881	1065.90	-893.14
6	GUIDE	394267688	10.17	5222	0.003	-0.067	0.238	0.349	159.395885	42.745124	1417.47	264.47
7	GUIDE	394670848	7.73	5227	0.008	0.123	0.072	0.118	160.950096	42.374309	-1966.21	-2440.16

2.4 Star Slots

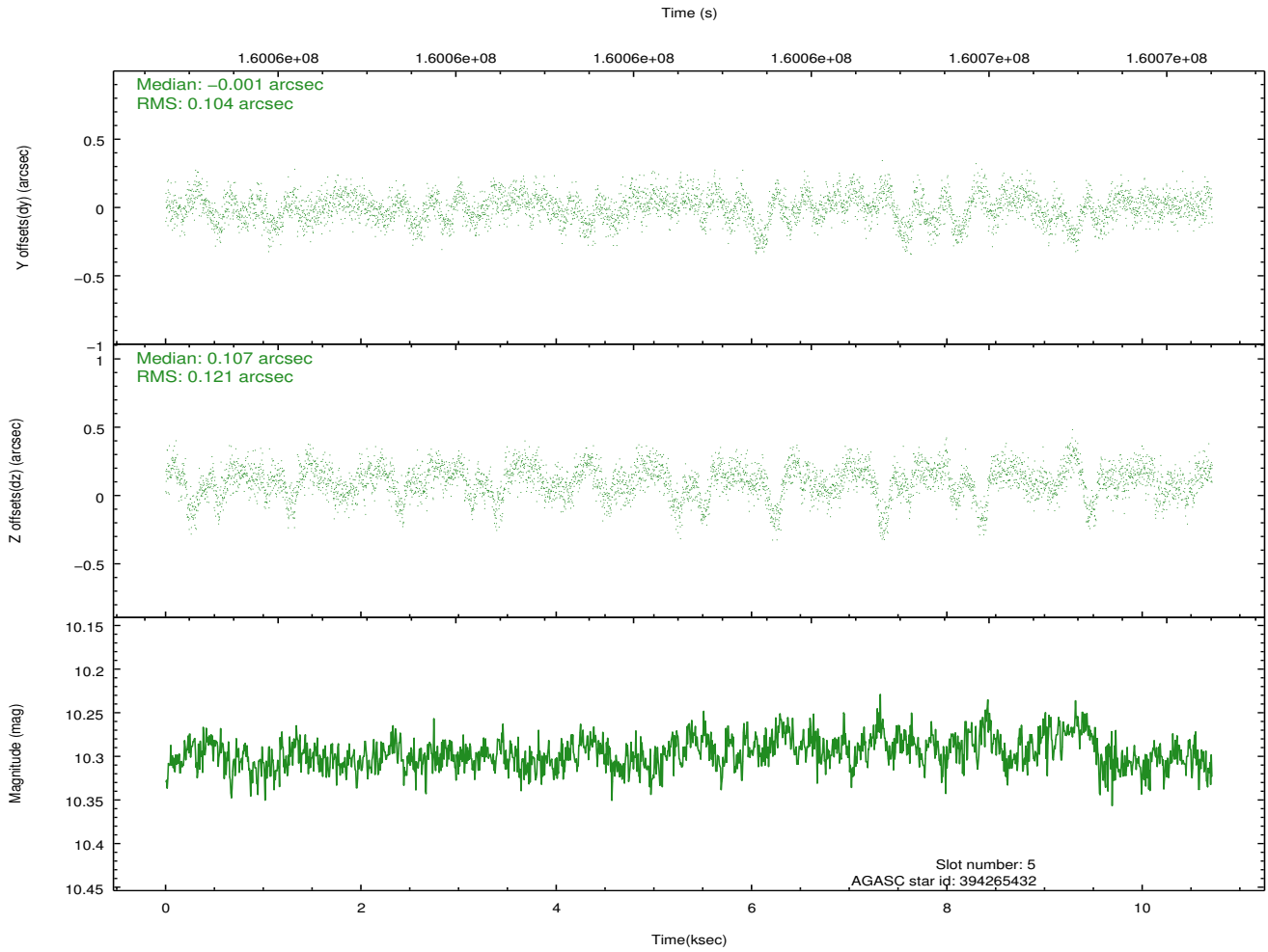
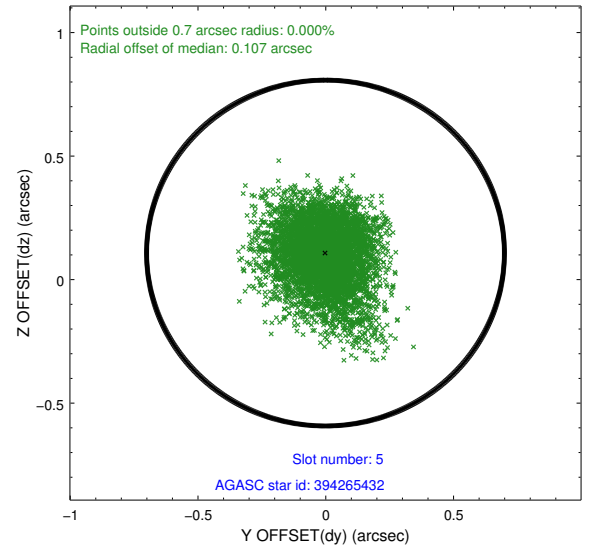
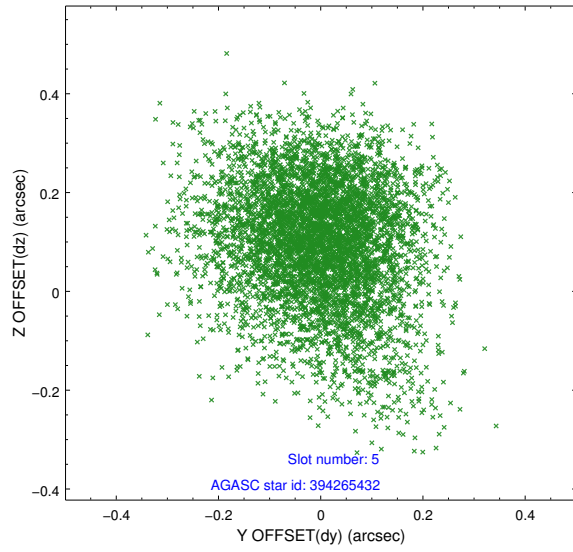
2.4.1 Slot 3



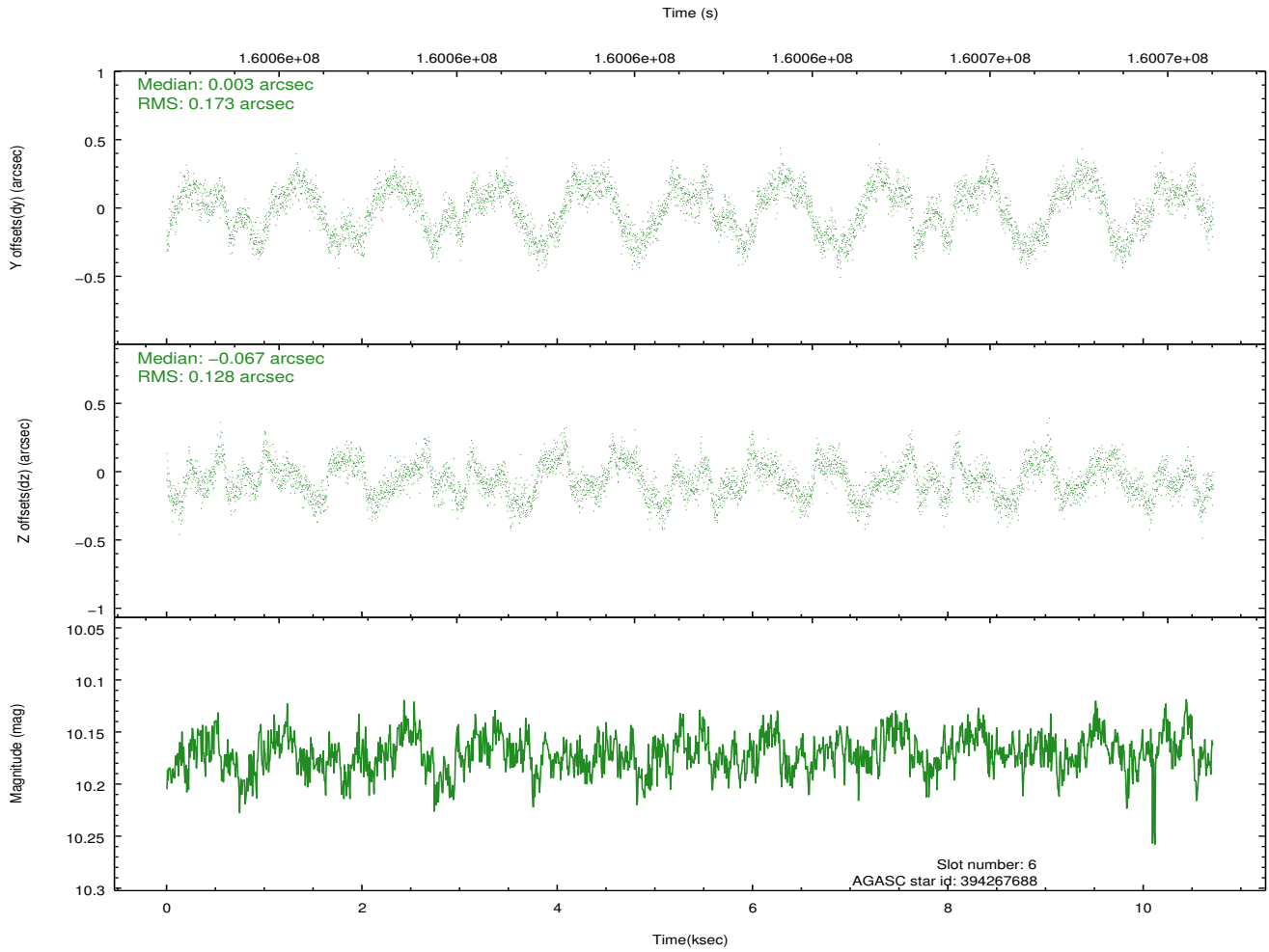
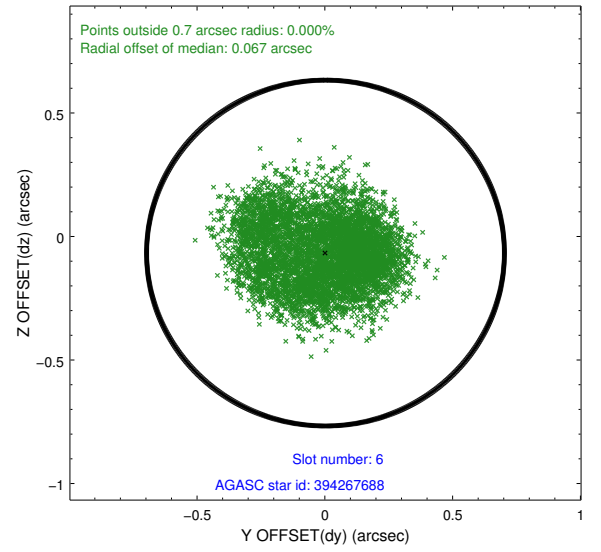
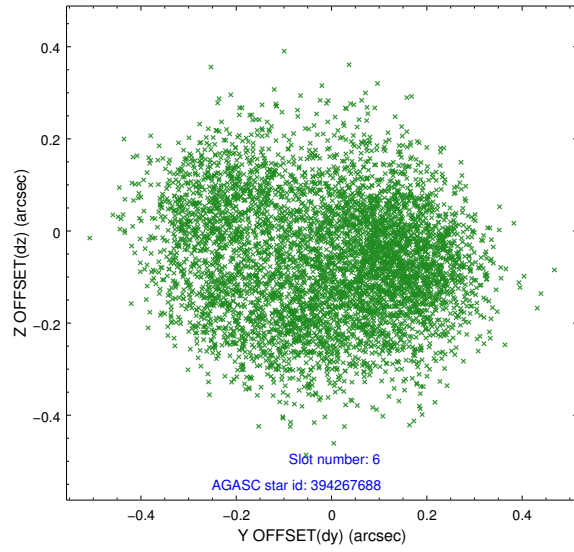
2.4.2 Slot 4



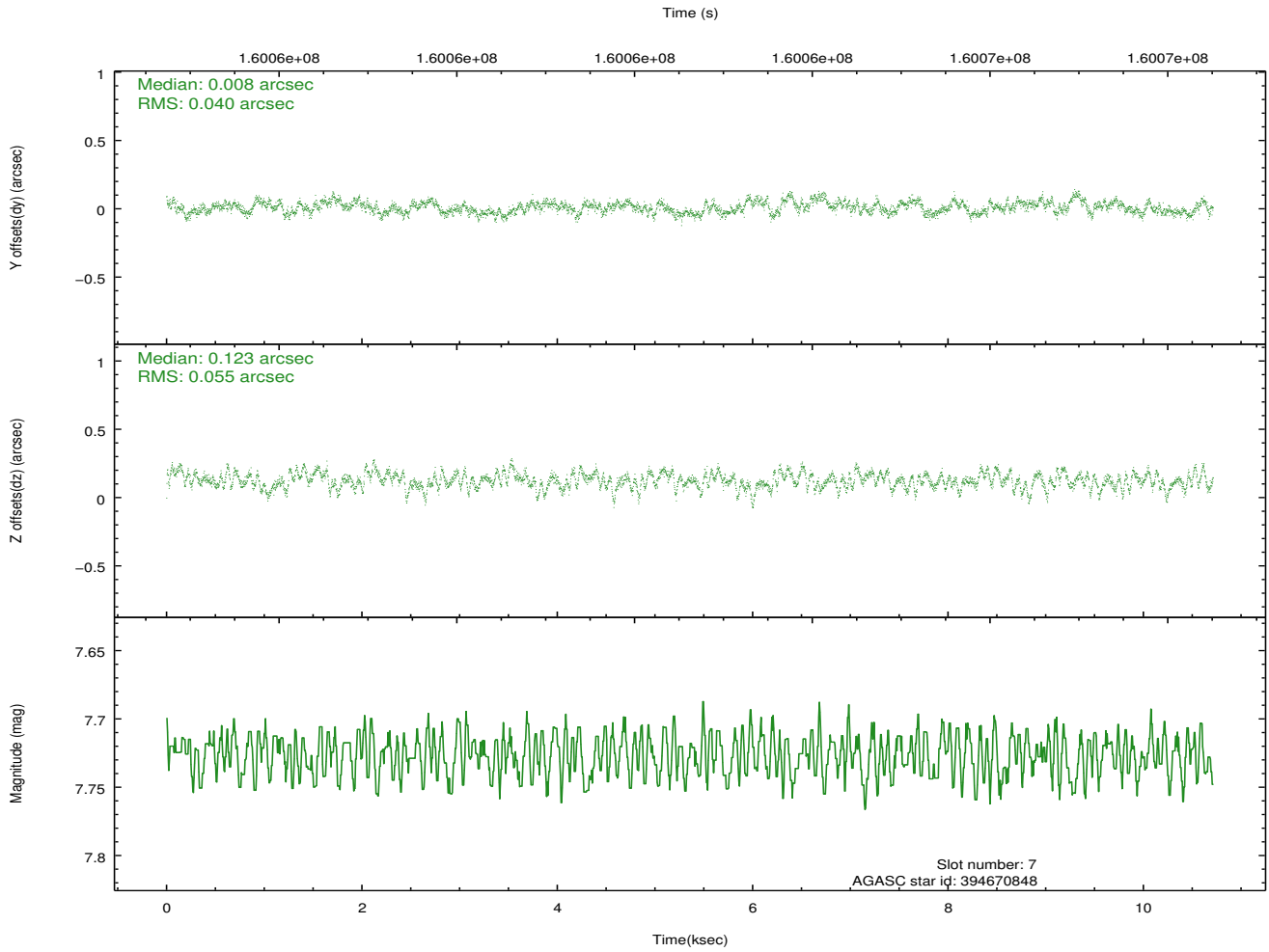
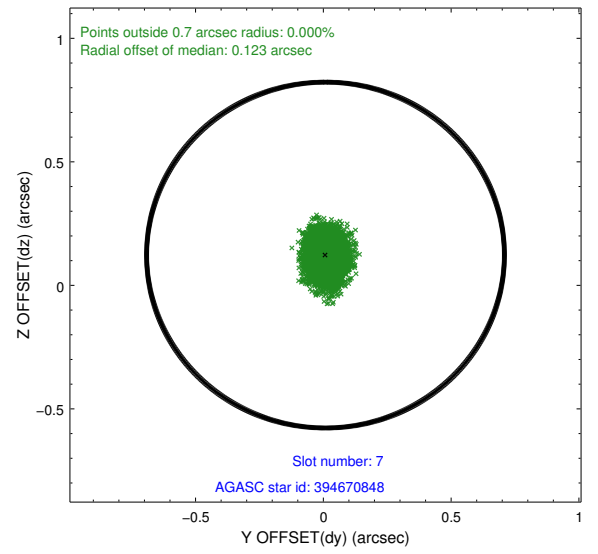
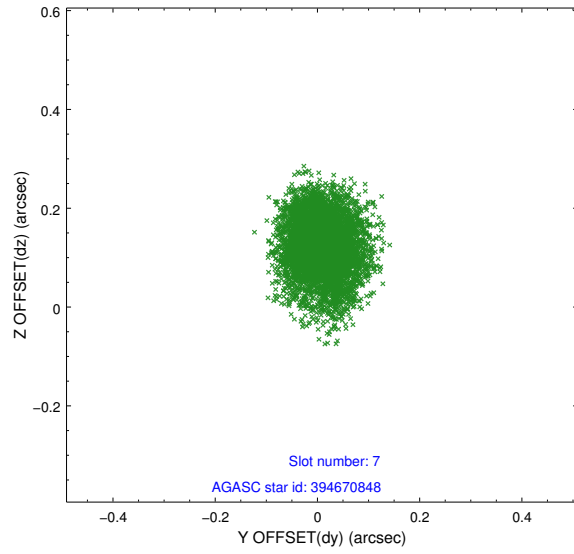
2.4.3 Slot 5



2.4.4 Slot 6

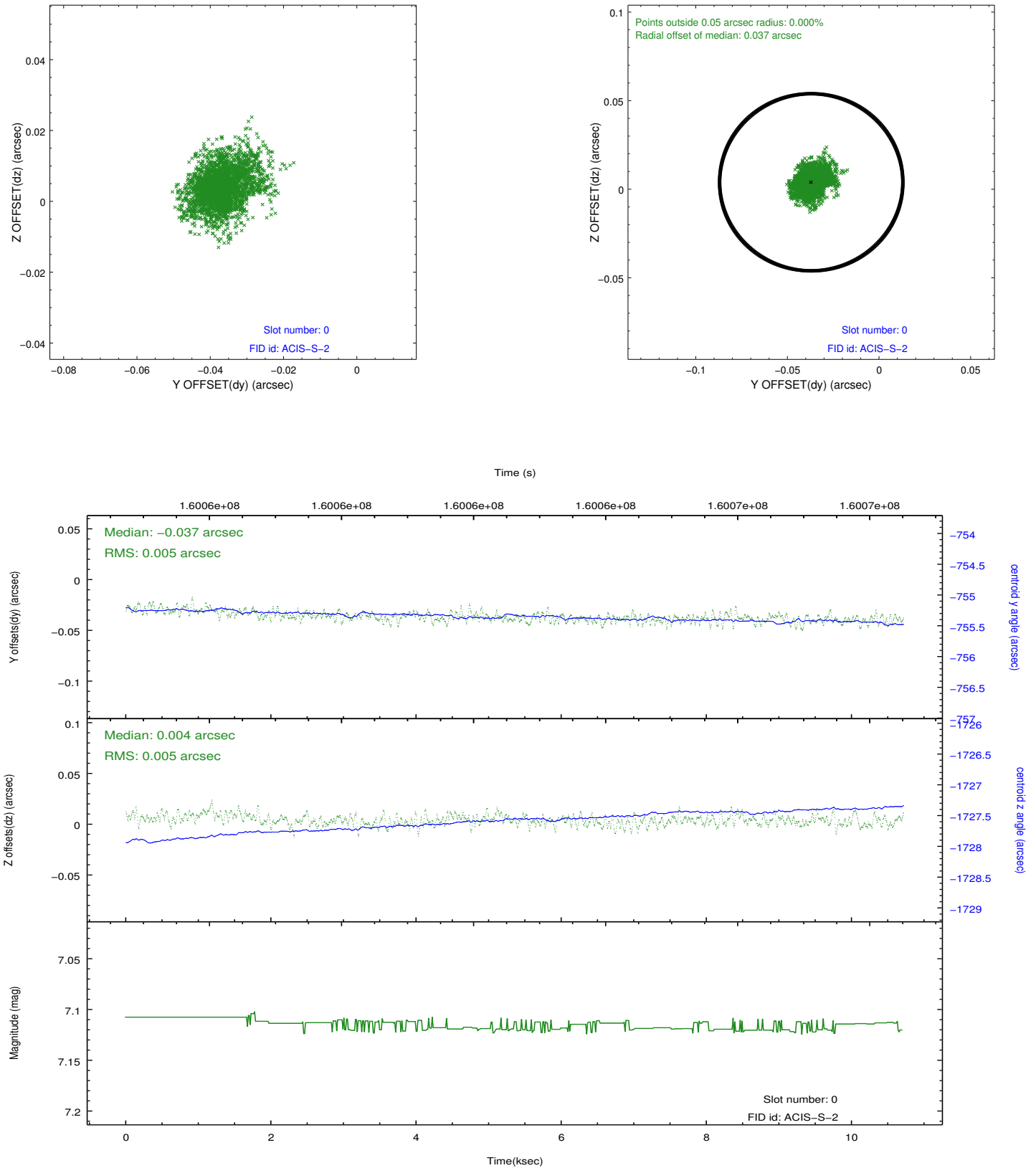


2.4.5 Slot 7

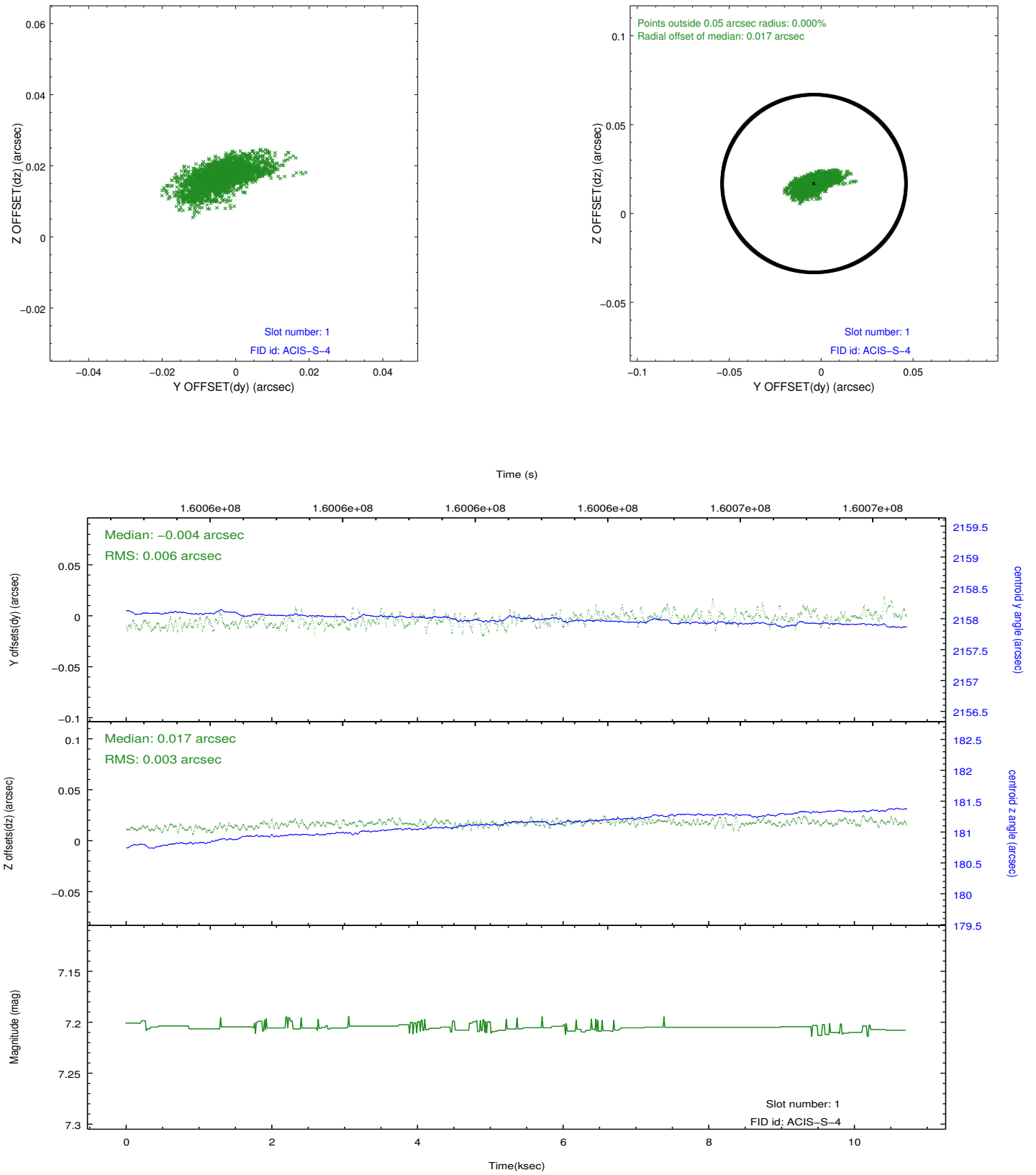


2.5 FID Slots

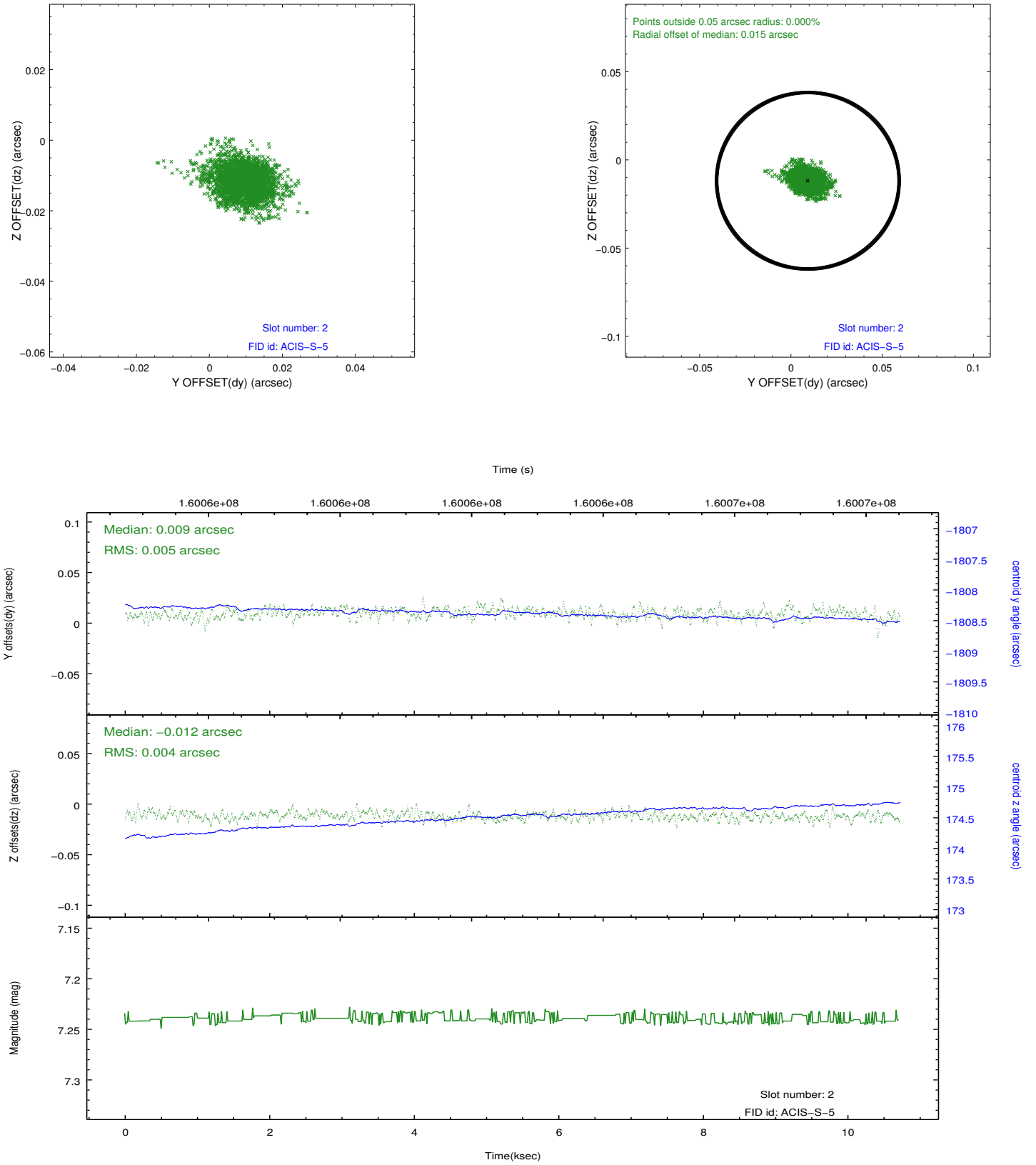
2.5.1 Slot 0



2.5.2 Slot 1



2.5.3 Slot 2



A Summary

A.1 Status

V&V Scientist	Jen Lauer
V&V Date (YYYY-MM-DD)	2012.11.01
V&V Edition	1
V&V Disposition and Status	OK
V&V Charge Time	10.714

A.2 Comments