

# V&V Reference Report

## L2 ASCDS Version : 7.6.8

Observation 4132 - L2 Version 001  
Chandra X-Ray Center

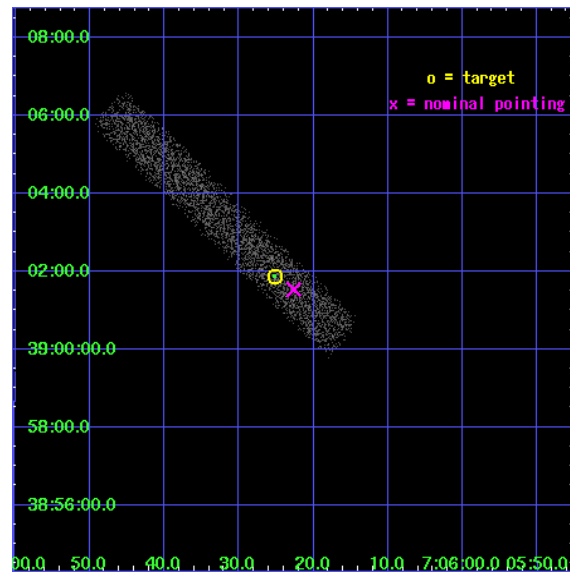
L2 Processing Date : Jul 19 2006

## Contents

<b>1</b>	<b>Front</b>	<b>2</b>
<b>2</b>	<b>OBI</b>	<b>3</b>
2.1	OBI . . . . .	3
2.1.1	Images . . . . .	3
2.1.2	Bias . . . . .	3
2.1.3	Parameters . . . . .	4
2.1.4	Events . . . . .	4
2.2	Compared Parameters . . . . .	5
2.3	Aspect . . . . .	6
2.4	Star Slots . . . . .	9
2.4.1	Slot 3 . . . . .	9
2.4.2	Slot 4 . . . . .	10
2.4.3	Slot 5 . . . . .	11
2.4.4	Slot 6 . . . . .	12
2.4.5	Slot 7 . . . . .	13
2.5	FID Slots . . . . .	14
2.5.1	Slot 0 . . . . .	14
2.5.2	Slot 1 . . . . .	15
2.5.3	Slot 2 . . . . .	16
<b>3</b>	<b>Point Sources</b>	<b>17</b>
<b>A</b>	<b>Summary</b>	<b>18</b>
A.1	Status . . . . .	18
A.2	Comments . . . . .	18

# 1 Front

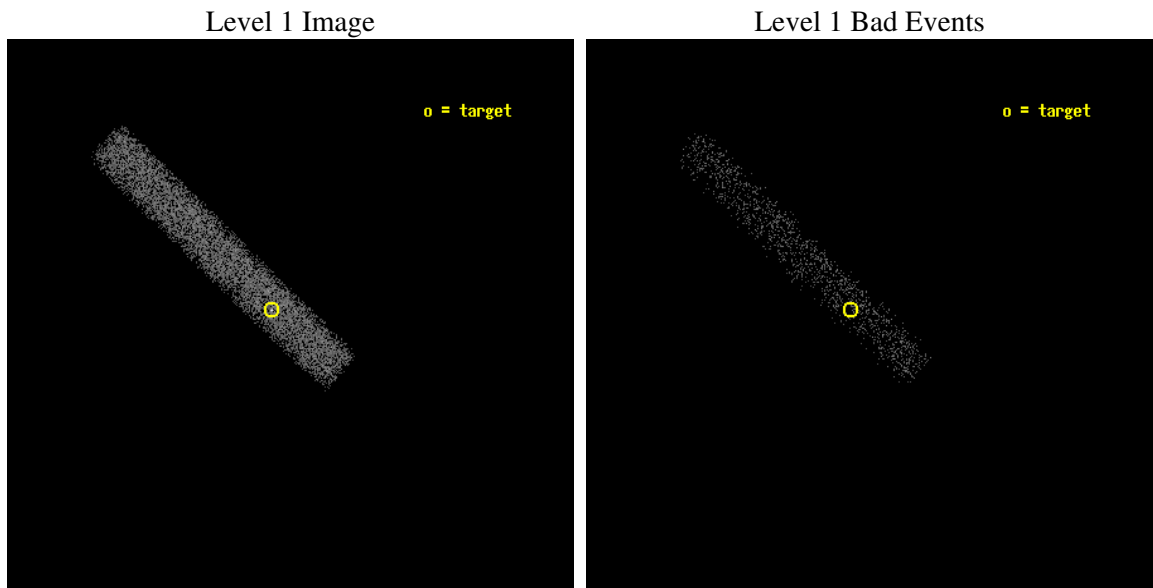
seq_num	700811
obs_id	4132
title	CHANDRA OBSERVATIONS OF THE FIRST SAMPLE OF RADIO-LOUD NARROW LINE SEYFERT I GALAXIES
observer	Dr. Sally Laurent-Muehleisen
object	FIRST J070625+390151
dtcycle	0
cycle	P
ra_targ	106.604583
dec_targ	39.031
ra_nom	106.59434788873
dec_nom	39.025602101475
roll_nom	224.20909563988
revision	2
ontime	10588.953967541
livetime	9603.6223177412
ontime7	10588.953967541
l2events	4963



## 2 OBI

### 2.1 OBI

#### 2.1.1 Images



#### 2.1.2 Bias

Chip 7



### 2.1.3 Parameters

obi_num	0
ascdsver	7.6.8
caldbver	3.2.2
date	2006-07-19T07:06:45
revision	2

sched_exp_time	10000.000000
ontime	10856.518224537
ontime7	10856.518224537
l1events	12143

### 2.1.4 Events

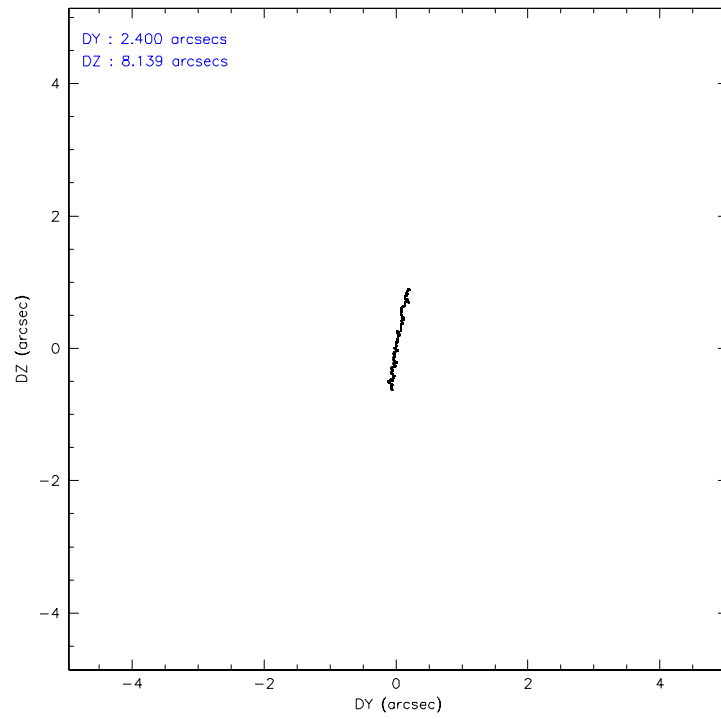
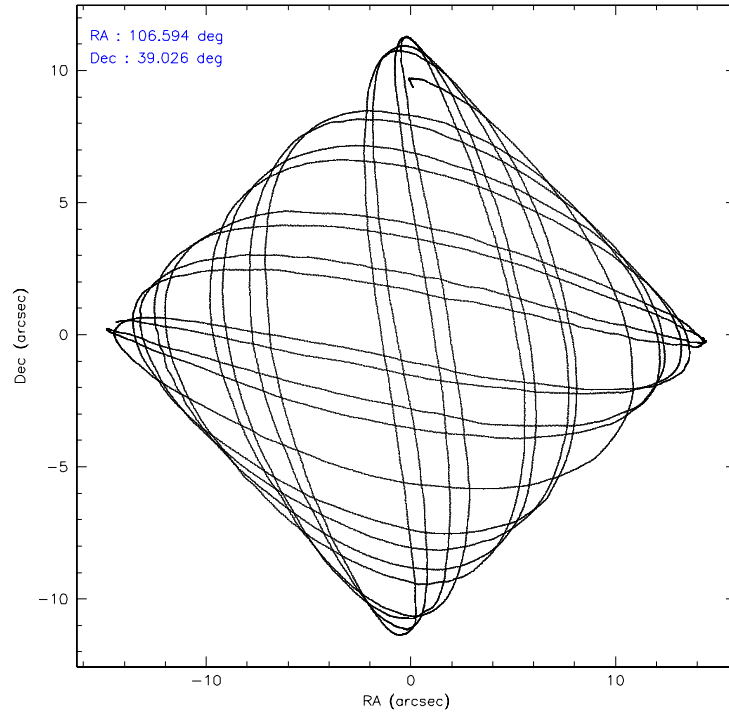
	<b>ccd 7</b>
level 1 events	12143
rejected events	6985
rejected %	57%

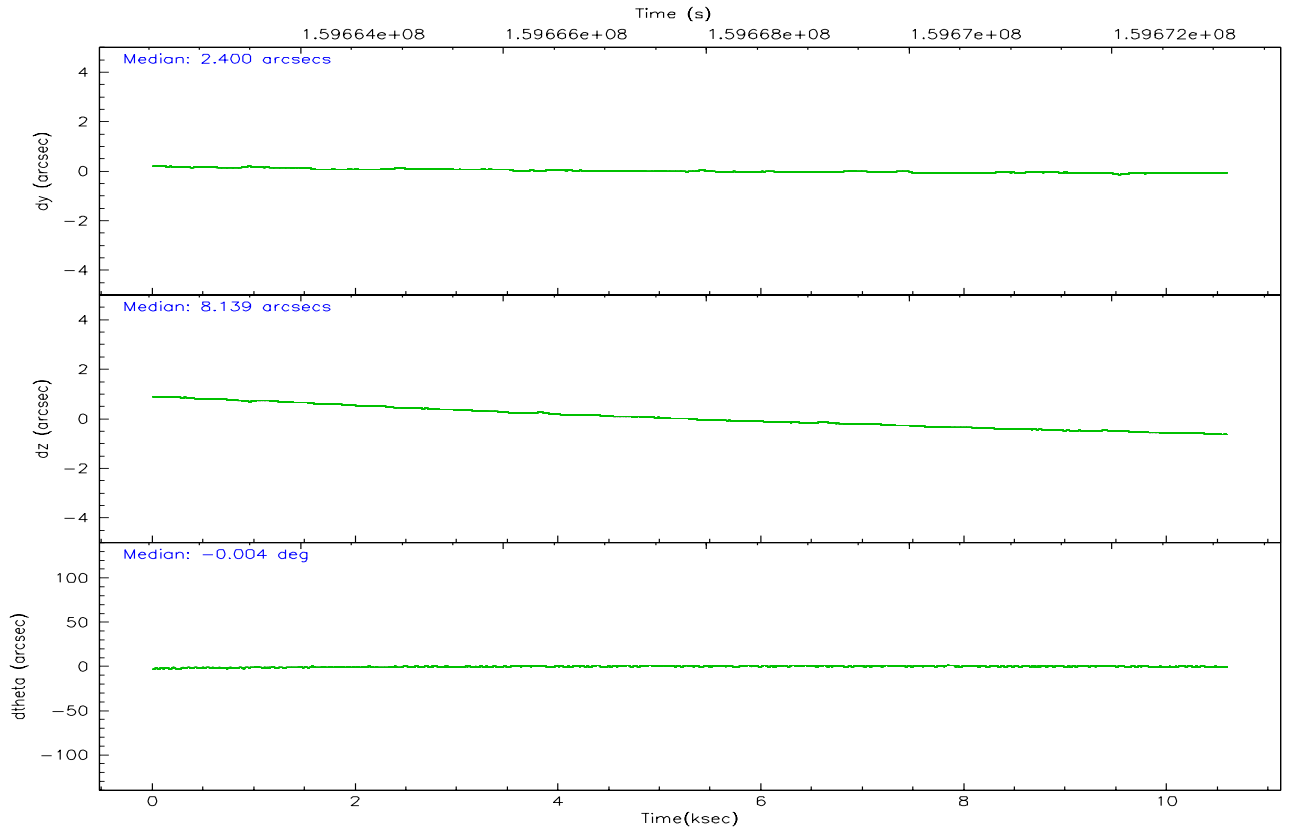
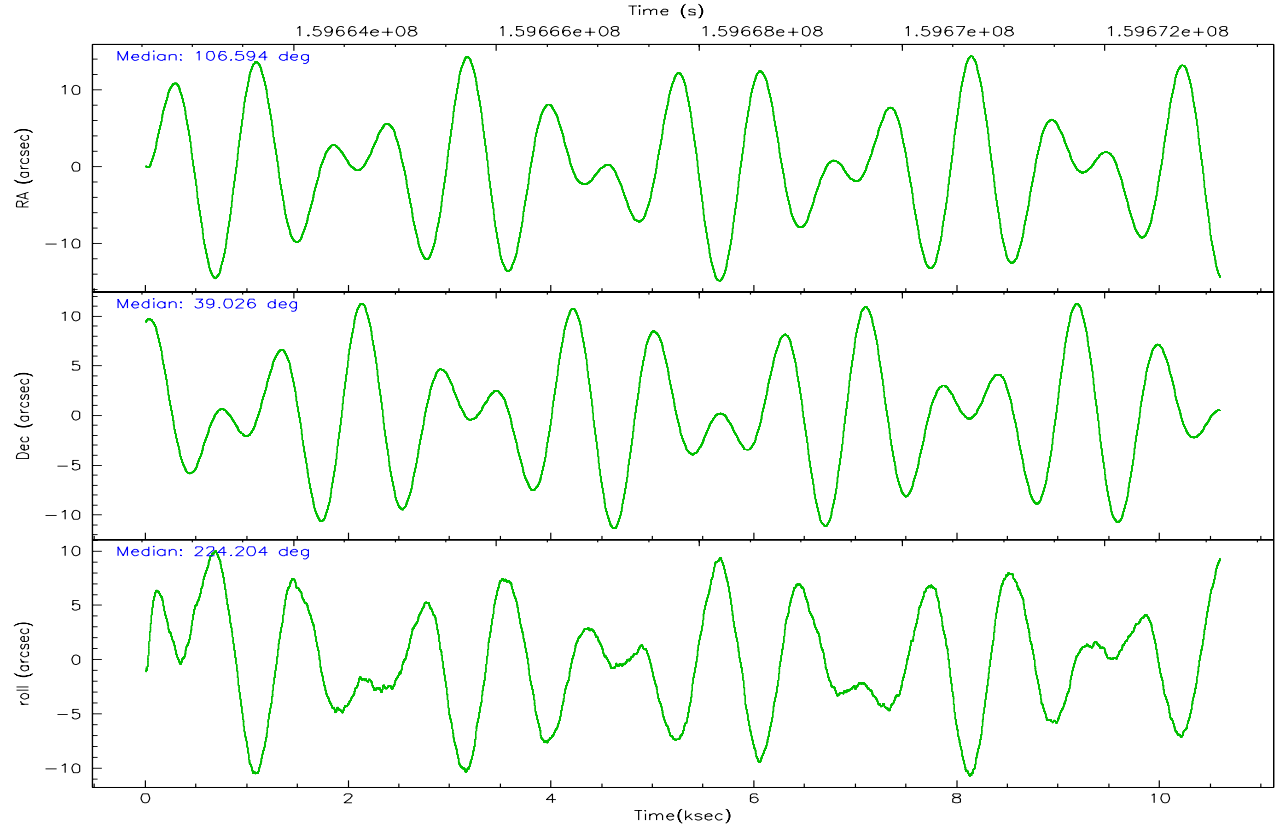
	<b>ccd 7</b>
grade 0 events	426
	3%
grade 1 events	9
	0%
grade 2 events	1132
	9%
grade 3 events	541
	4%
grade 4 events	524
	4%
grade 5 events	853
	7%
grade 6 events	2663
	21%
grade 7 events	5995
	49%

## 2.2 Compared Parameters

Parameter	Planned	Actual	Parameter	Planned	Actual
Instrument	ACIS	ACIS	Obspar format version number	6	6
Detector	ACIS-7	ACIS-7	Obspar file type	PREDICTED	ACTUAL
Grating	NONE	NONE	Obspar update status	NONE	UPDATED
Data mode	FAINT	FAINT	On-chip summing requested	N	N
Observation mode	POINTING	POINTING	Subarray requested	1/8	1/8
Pointing RA	106.603352	106.5943478887257	Subarray start row	0	449
Pointing Dec	39.051878	39.025602101475	Subarray row count	1024	128
Pointing Roll	224.046801	224.20909563988	Alternating exposures requested	N	N
SIM focus pos (mm)	-0.684267	-0.6828225247311905	Primary exposure time	0.000000	0.4
SIM defocus (mm)	0	0.001444936568705701			
SIM translation stage pos (mm)	-190.132523	-190.1425803651734			
SIM translation stage offset (mm)	0	0.01005778216563158			
Observation start time	159663144.184000	159661977.30907			
Observation start date	2003-01-22T22:51:20	2003-01-22T22:32:57			
Observation end time	159673144.184000	159673765.32207			
Observation end date	2003-01-23T01:38:00	2003-01-23T01:49:25			
Read mode	TIMED	TIMED			

## 2.3 Aspect





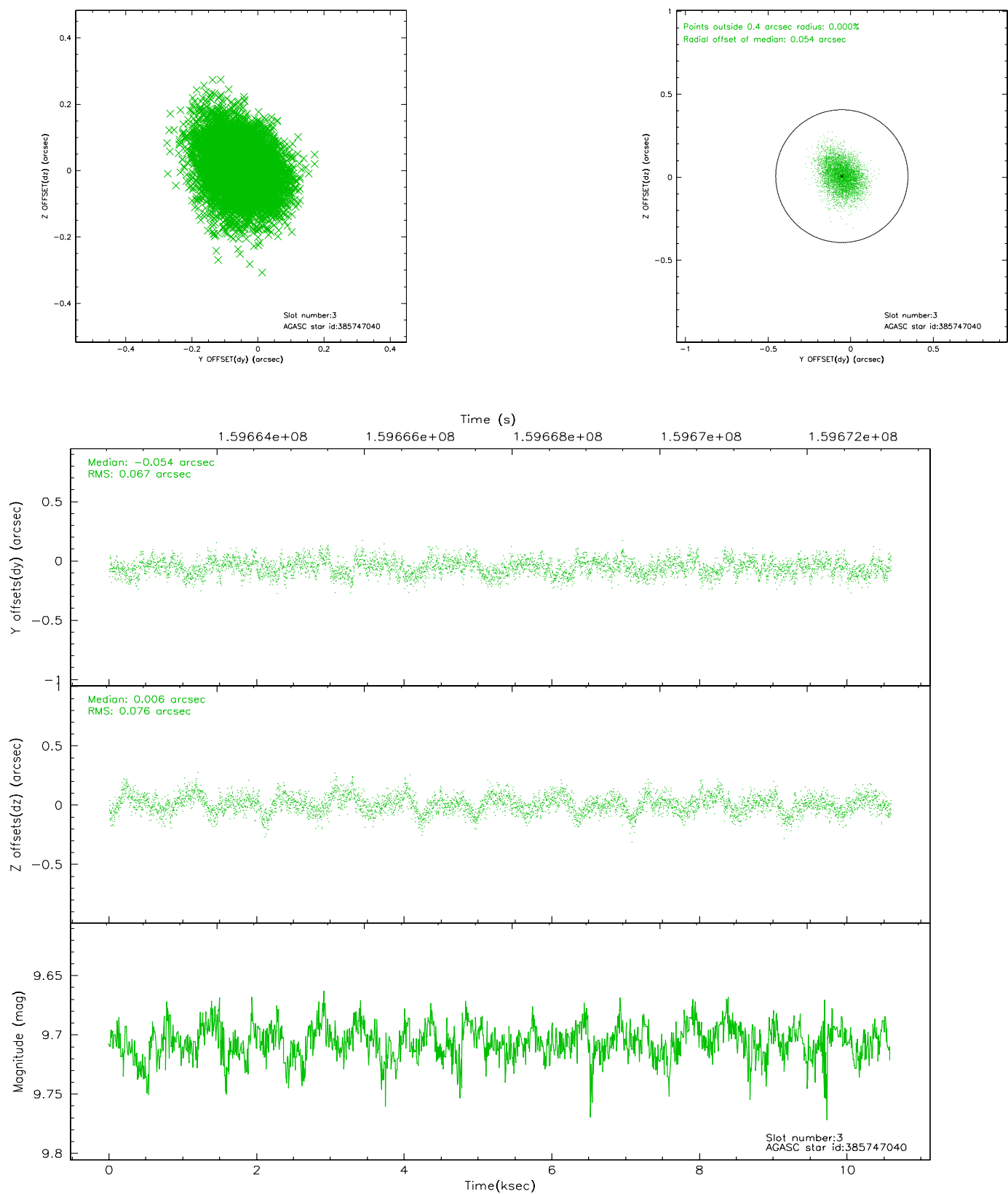
### Slot Statistics

slot	status	id	mag	n_pts	med_dy	med_dz	dr1	dr2	ra	dec	mean_y	mean_z
0	FID	ACIS-S-2	7.11	2581	-0.008	0.016	0.007	0.011	0.000000	0.000000	-755.05	-1729.32
1	FID	ACIS-S-4	7.21	2580	-0.069	-0.001	0.006	0.015	0.000000	0.000000	2157.94	178.63
2	FID	ACIS-S-5	7.24	2580	0.044	-0.007	0.007	0.011	0.000000	0.000000	-1807.21	172.86
3	GUIDE	385747040	9.71	5159	-0.054	0.006	0.109	0.176	106.661028	38.673708	830.22	1091.50
4	GUIDE	385761136	8.57	5164	-0.037	0.028	0.081	0.129	105.584826	39.169366	1738.88	-2291.28
5	GUIDE	386276784	9.74	5161	-0.054	-0.000	0.112	0.179	106.467774	39.793100	-1585.02	-2179.34
6	GUIDE	385750336	9.25	5162	0.145	0.041	0.080	0.136	106.470078	38.600557	1399.09	906.90
7	GUIDE	386270176	9.14	5163	0.001	-0.072	0.074	0.121	107.297888	39.413362	-2297.73	402.45

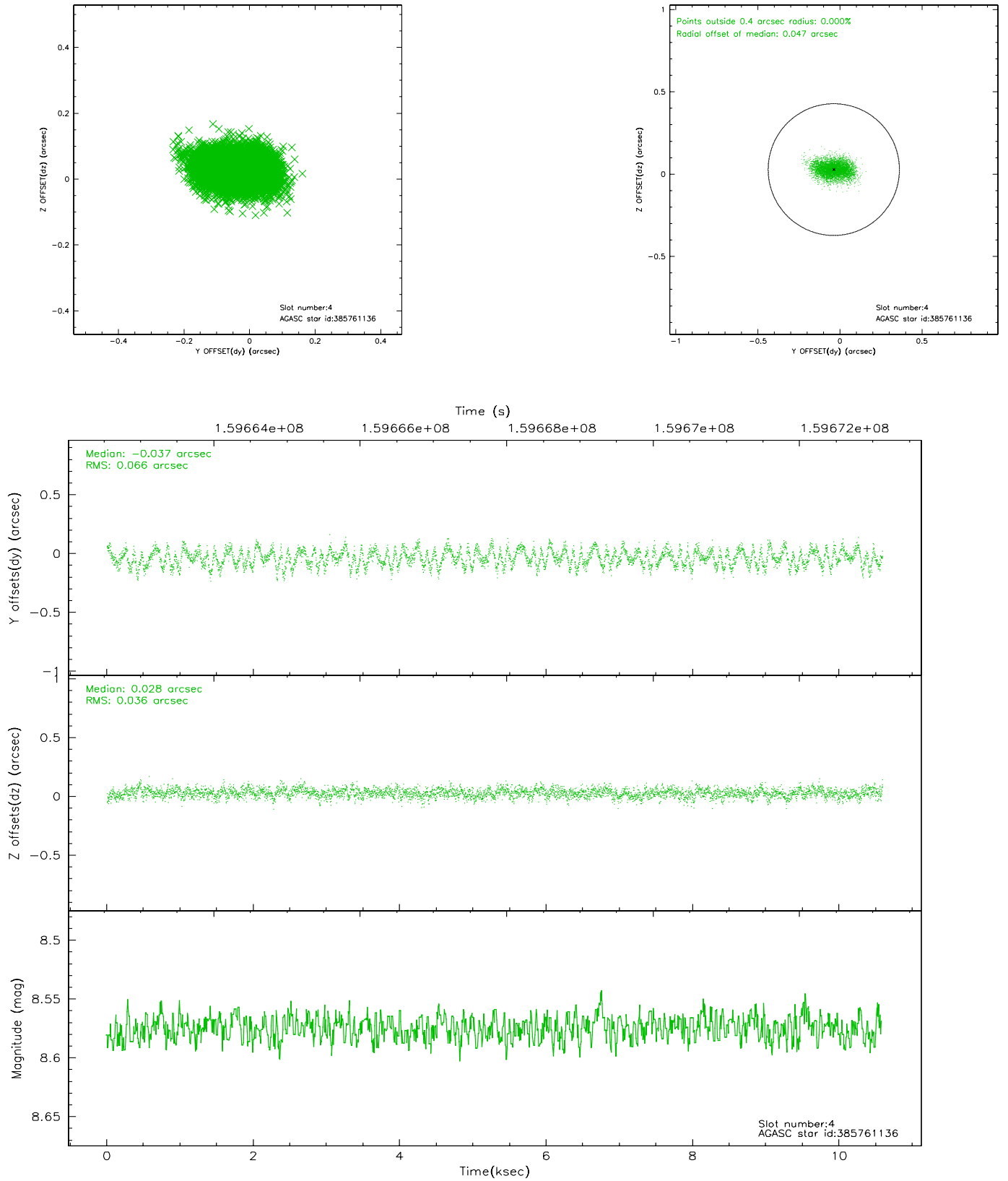


## 2.4 Star Slots

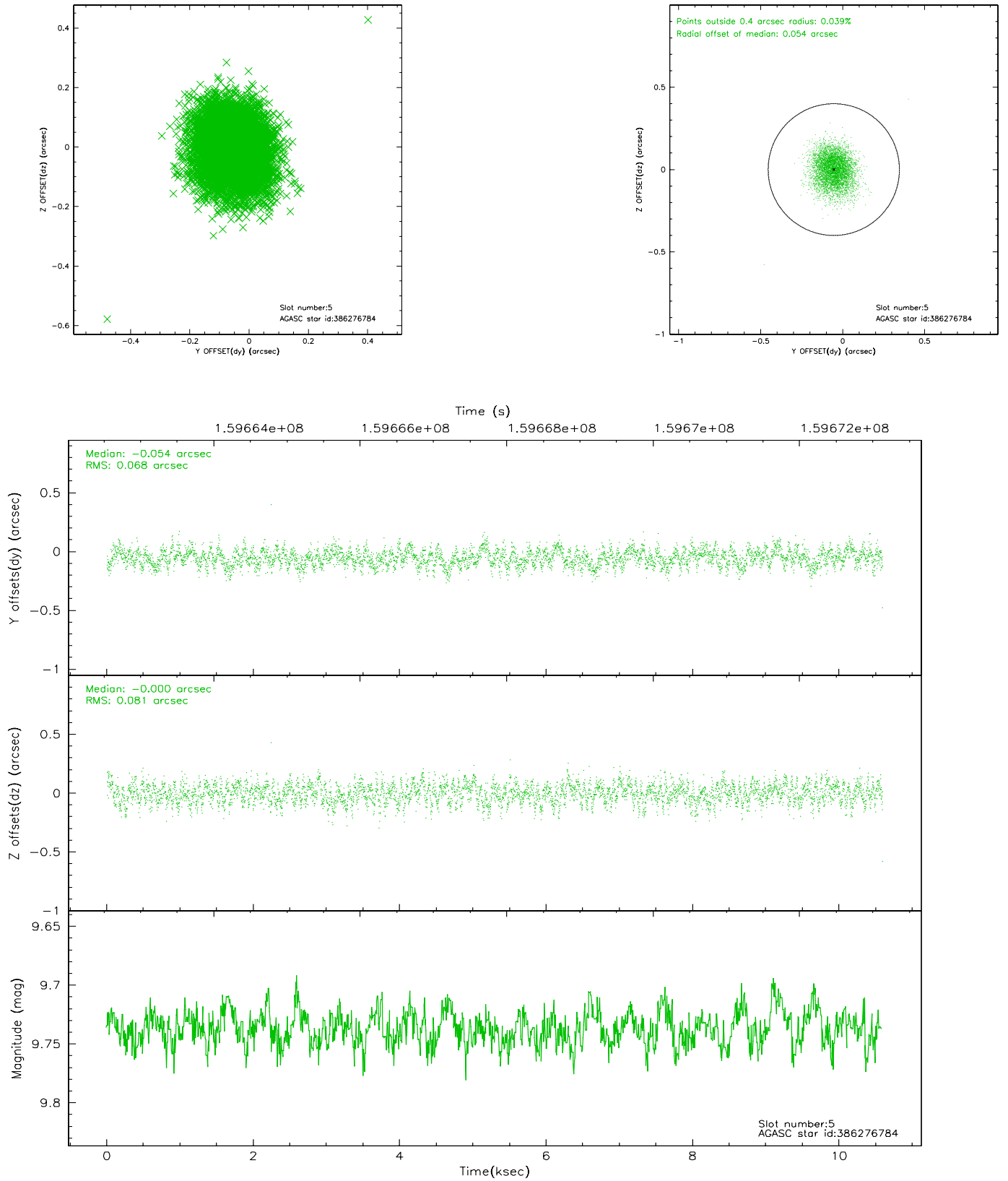
### 2.4.1 Slot 3



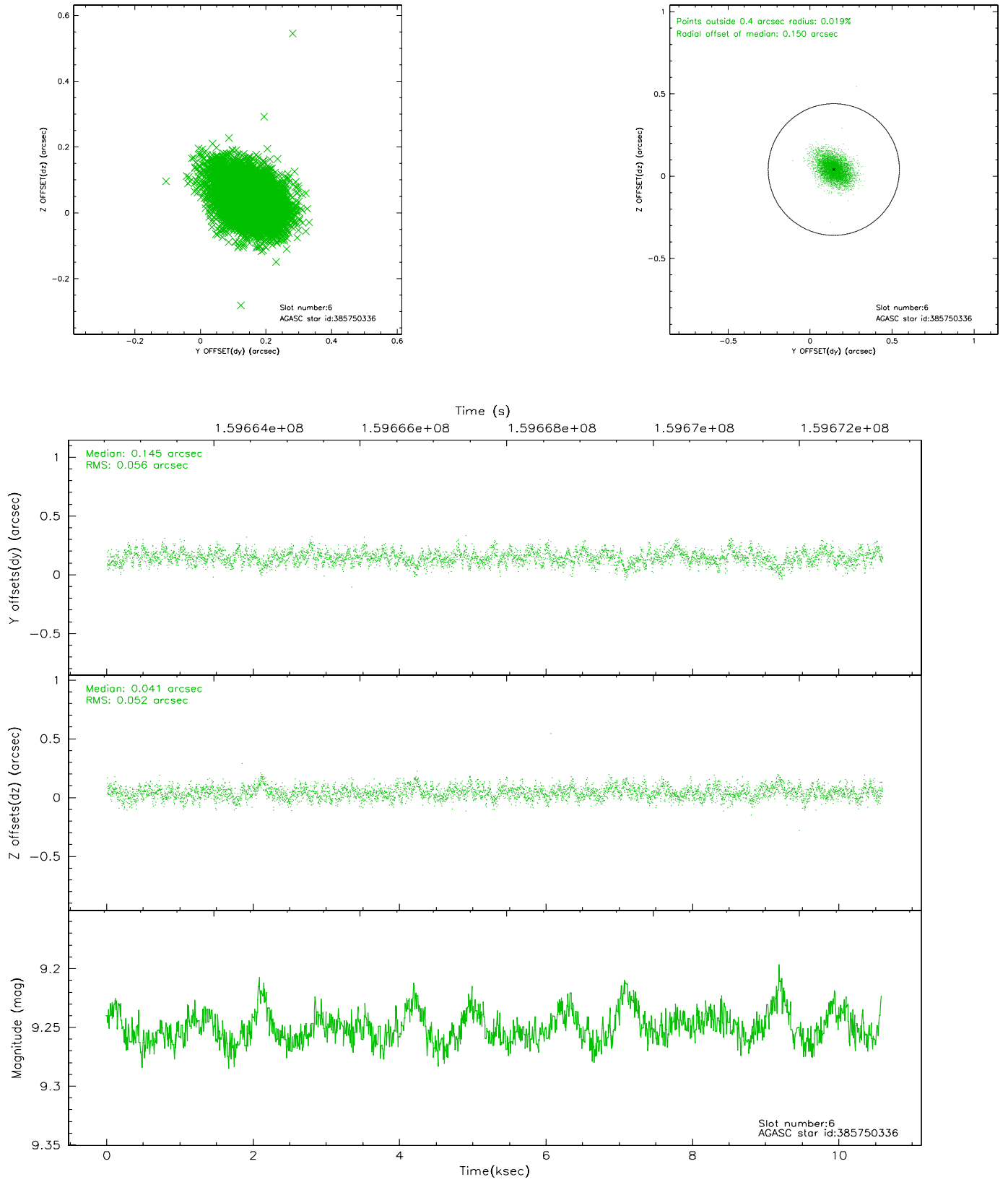
## 2.4.2 Slot 4



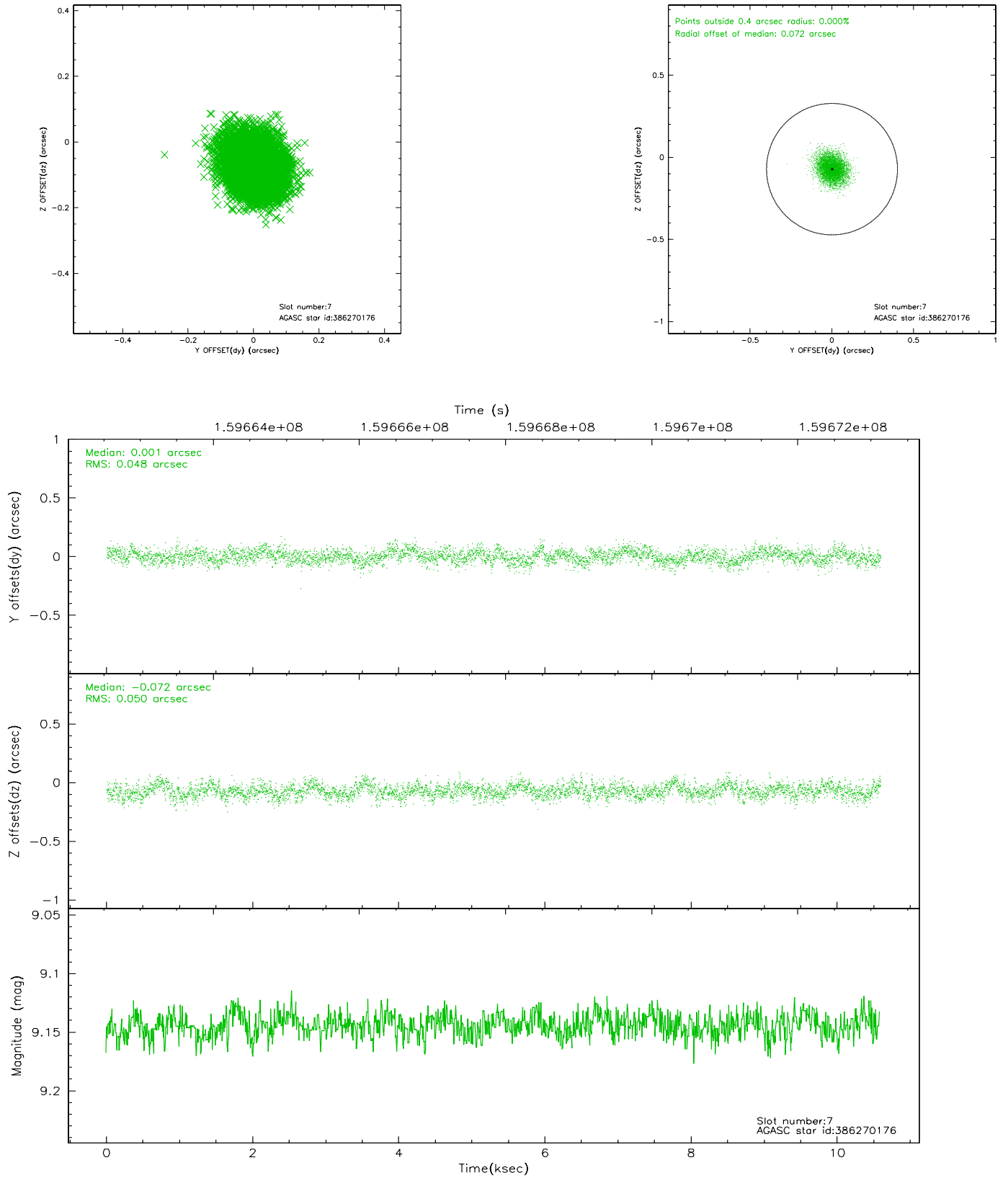
### 2.4.3 Slot 5



## 2.4.4 Slot 6

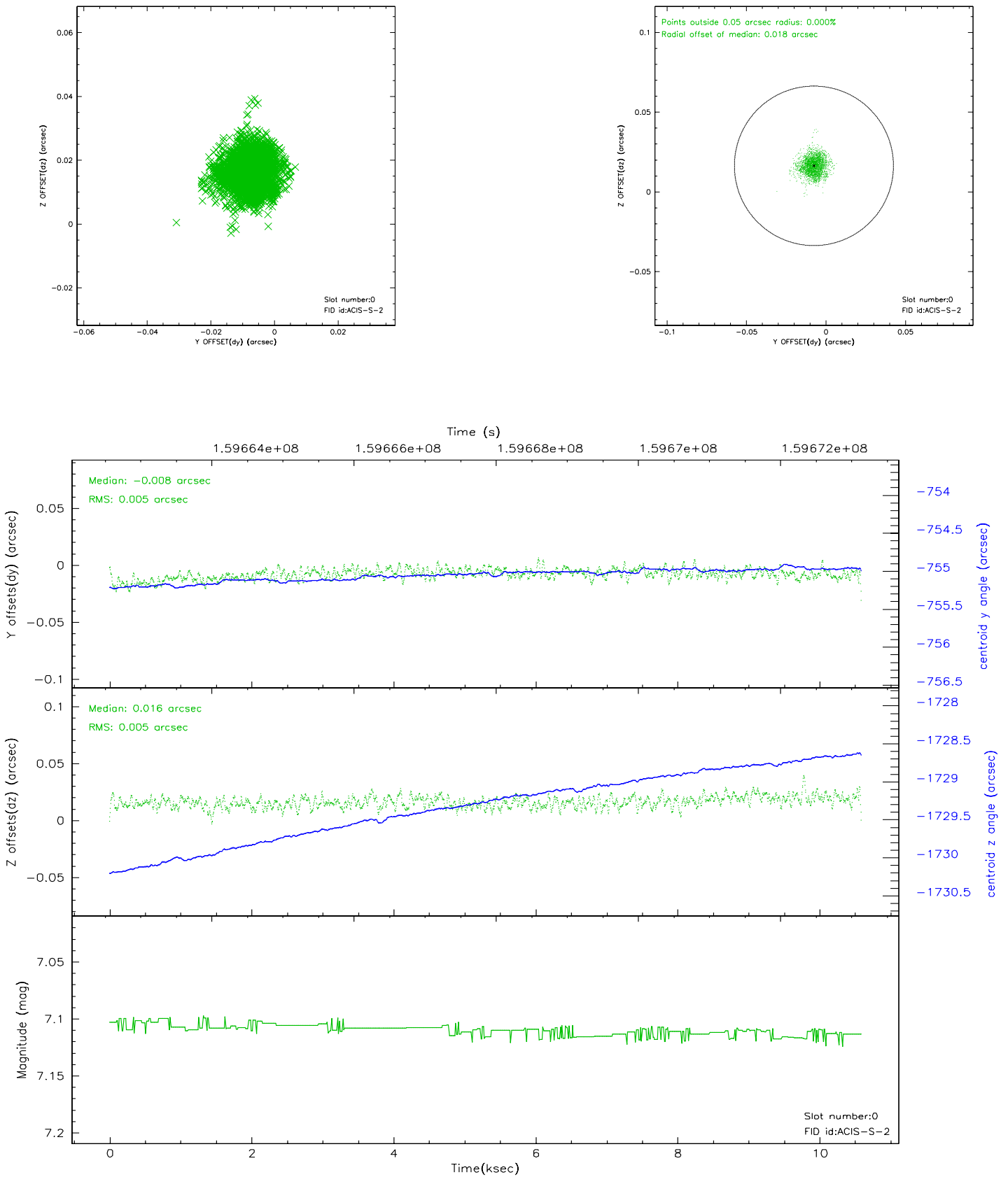


## 2.4.5 Slot 7

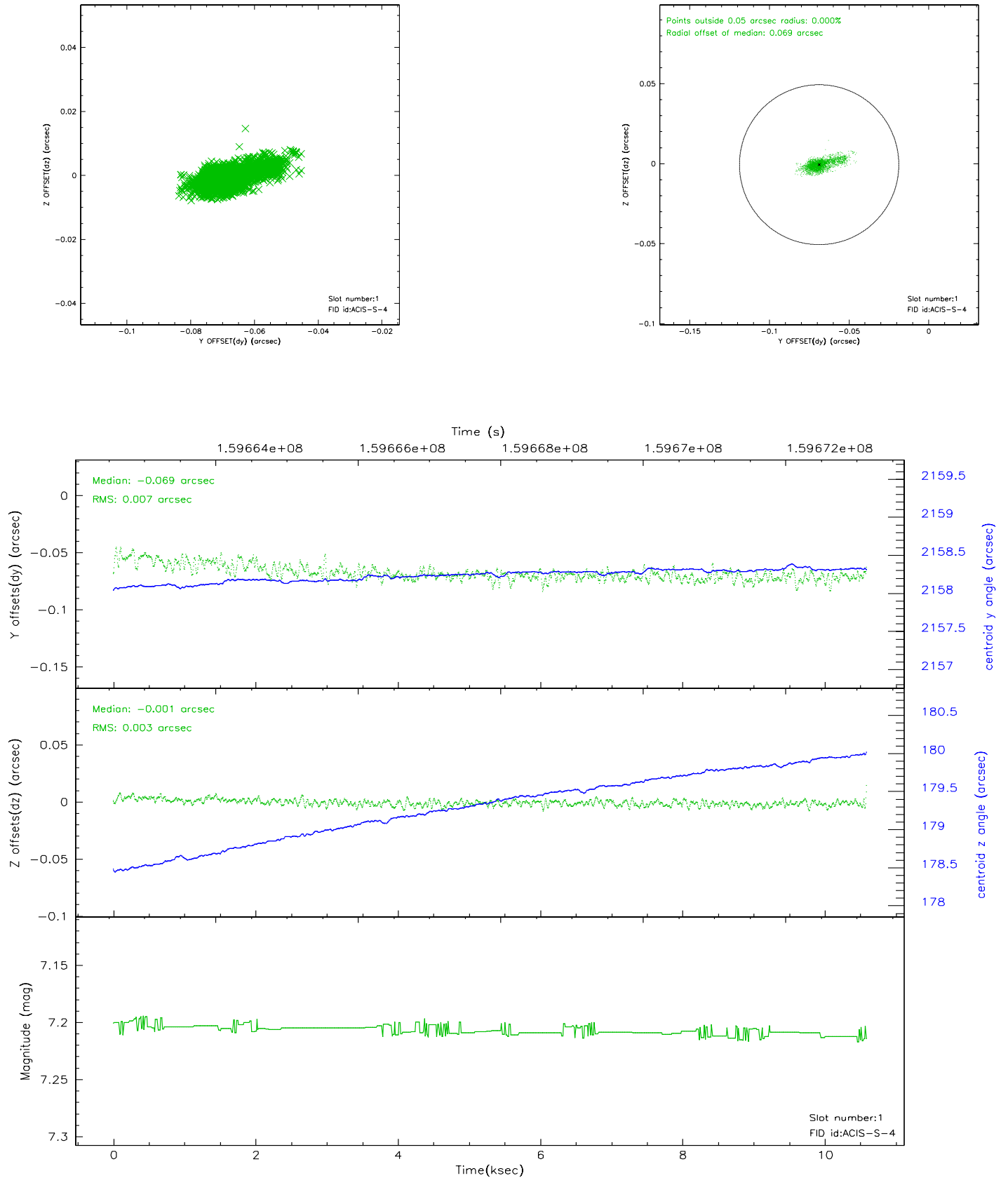


## 2.5 FID Slots

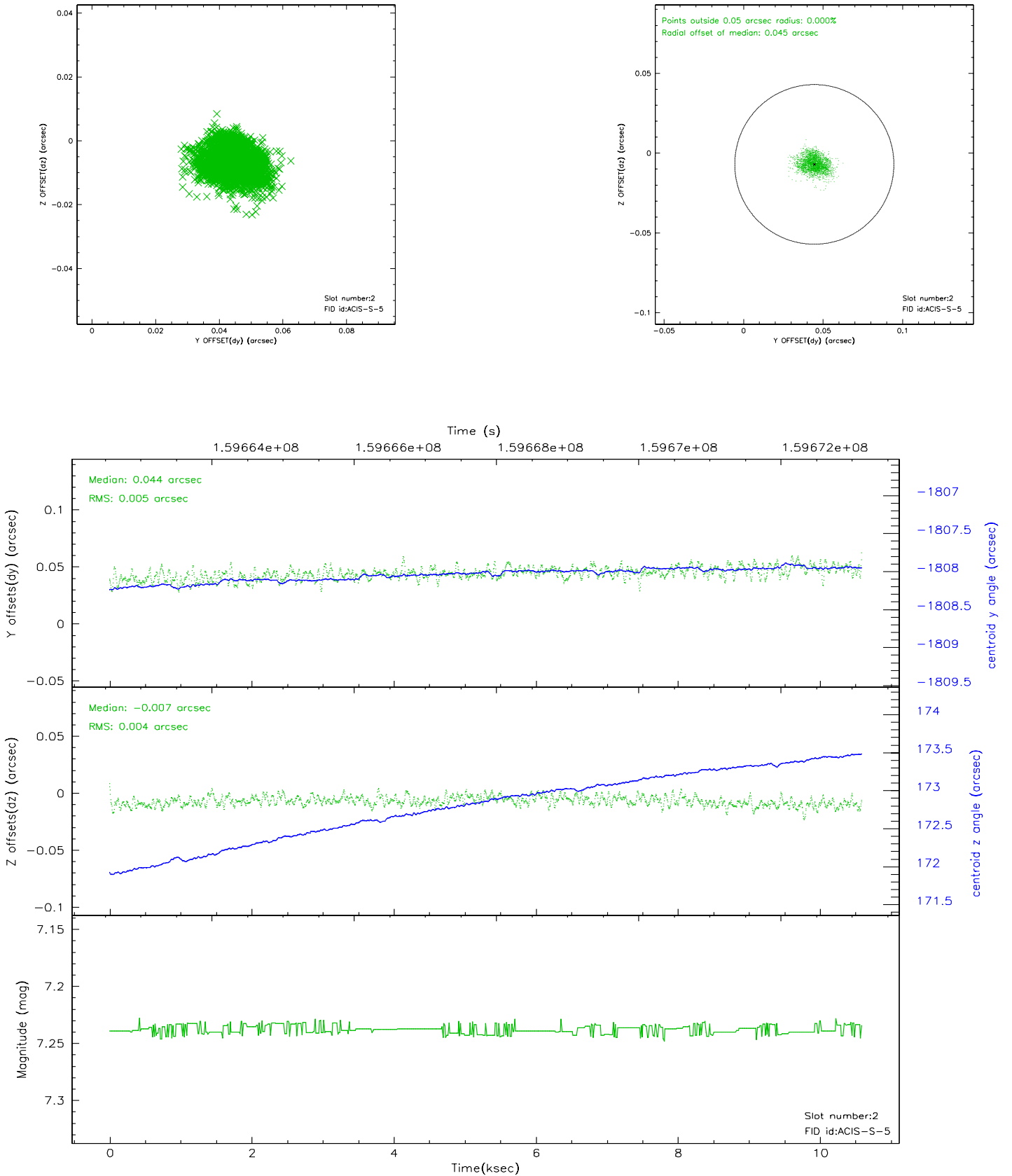
### 2.5.1 Slot 0



## 2.5.2 Slot 1



### 2.5.3 Slot 2





### 3 Point Sources

## A Summary

### A.1 Status

V&V Scientist	Jen Lauer
V&V Date (YYYY-MM-DD)	2006.07.19
V&V Edition	1
V&V Disposition and Status	OK
V&V Charge Time	10.588

### A.2 Comments