

V&V Reference Report

L2 ASCDS Version : 8.4.5

Observation 4131 - L2 Version 3
Chandra X-Ray Center

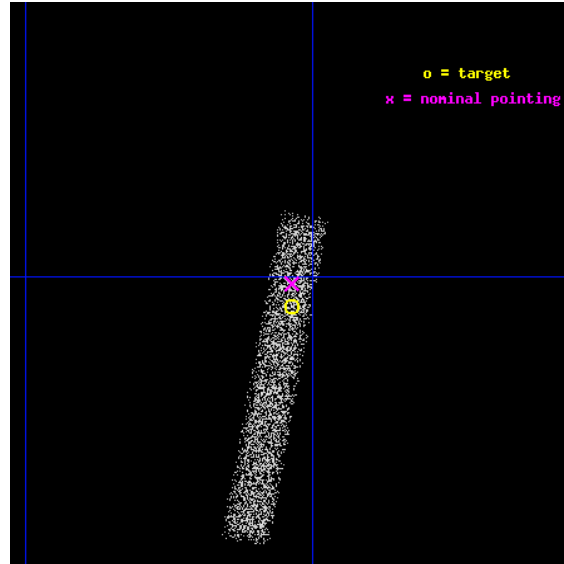
L2 Processing Date : Nov 3 2012

Contents

1	Front	2
2	OBI	3
2.1	OBI	3
2.1.1	Images	3
2.1.2	Bias	3
2.1.3	Parameters	4
2.1.4	Events	4
2.2	Compared Parameters	5
2.3	Aspect	6
2.4	Star Slots	9
2.4.1	Slot 3	9
2.4.2	Slot 4	10
2.4.3	Slot 5	11
2.4.4	Slot 6	12
2.4.5	Slot 7	13
2.5	FID Slots	14
2.5.1	Slot 0	14
2.5.2	Slot 1	15
2.5.3	Slot 2	16
A	Summary	17
A.1	Status	17
A.2	Comments	17

1 Front

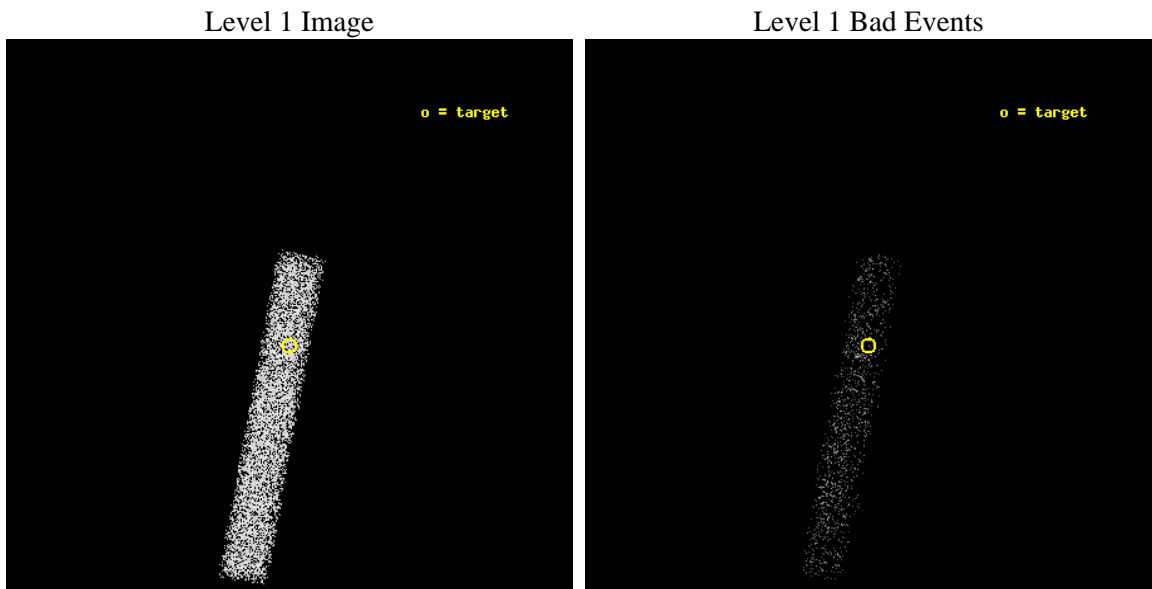
seq_num	700810	Sequence number
obs_id	4131	Observation id
title	CHANDRA OBSERVATIONS OF THE FIRST SAMPLE OF RADIO-LOUD NARROW LINE SEYFERT I GALAXIES	Proposal title
observer	Dr. Sally Laurent-Muehleisen	Principal investigator
object	FIRST J010032-020046	Source name
dtcycle	0	
cycle	P	events from which exps? Prim/Second/Both
ra_targ	15.134167	Observer's specified target RA [deg]
dec_targ	-2.012861	Observer's specified target Dec [deg]
ra_nom	15.134046979047	Nominal RA [deg]
dec_nom	-2.0031522373075	Nominal Dec [deg]
roll_nom	100.45548043088	Nominal Roll [deg]
revision	3	Processing version of data
ontime	10142.80015111	Sum of GTIs [s]
livetime	9198.984356167	Livetime [s]
ontime7	10142.80015111	Sum of GTIs [s]
l2events	4963	Number of level 2 events



2 OBI

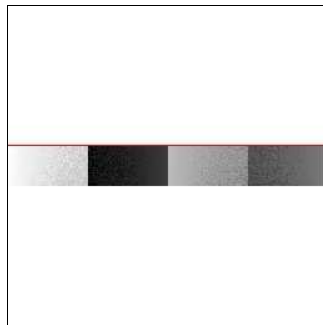
2.1 OBI

2.1.1 Images



2.1.2 Bias

Chip 7



2.1.3 Parameters

obi_num	0	Obi number	sched_exp_time	10000.000000	[s] Scheduled observation exposure time
ascdsver	8.4.5	Processing system revision	ontime	10142.80015111	Sum of GTIs [s]
caldsver	4.5.2	 	ontime7	10142.80015111	Sum of GTIs [s]
date	2012-11-03T19:22:49	Date and time of file creation	l1events	12288	Number of level 1 events
revision	3	Processing version of data			

2.1.4 Events

	ccd 7
level 1 events	12288
rejected events	7103
rejected %	57%

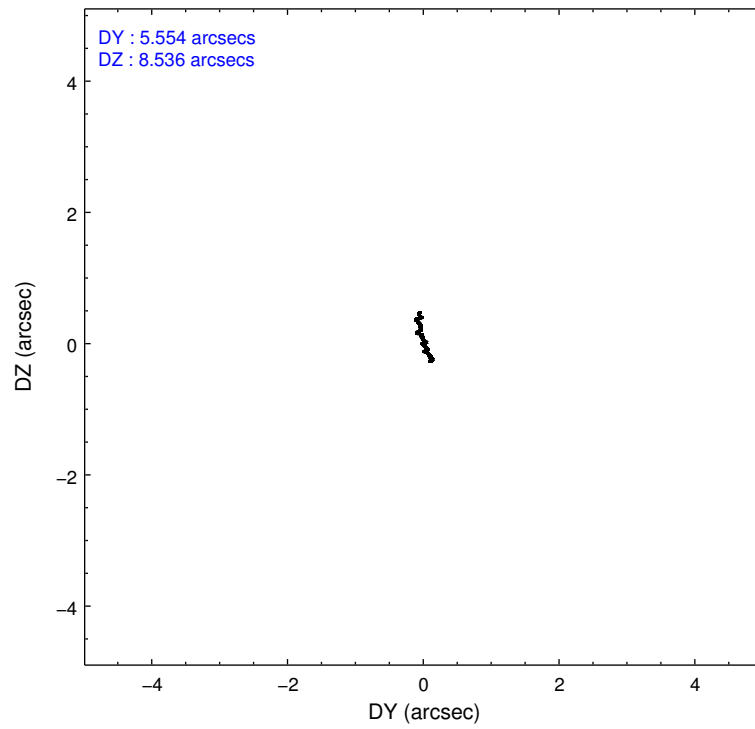
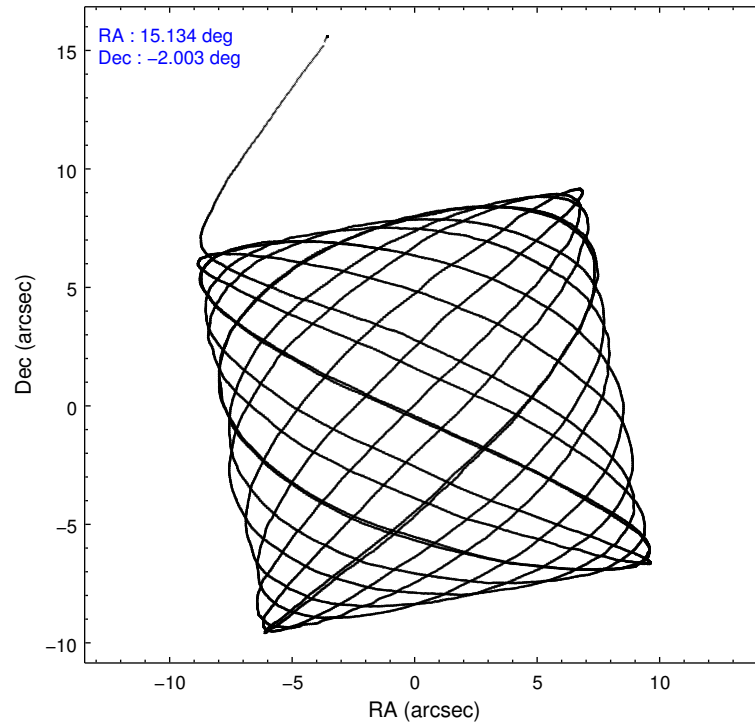
	ccd 7
grade 0 events	590
	4%
grade 1 events	7
	0%
grade 2 events	1073
	8%
grade 3 events	799
	6%
grade 4 events	703
	5%
grade 5 events	1127
	9%
grade 6 events	2587
	21%
grade 7 events	5402
	43%

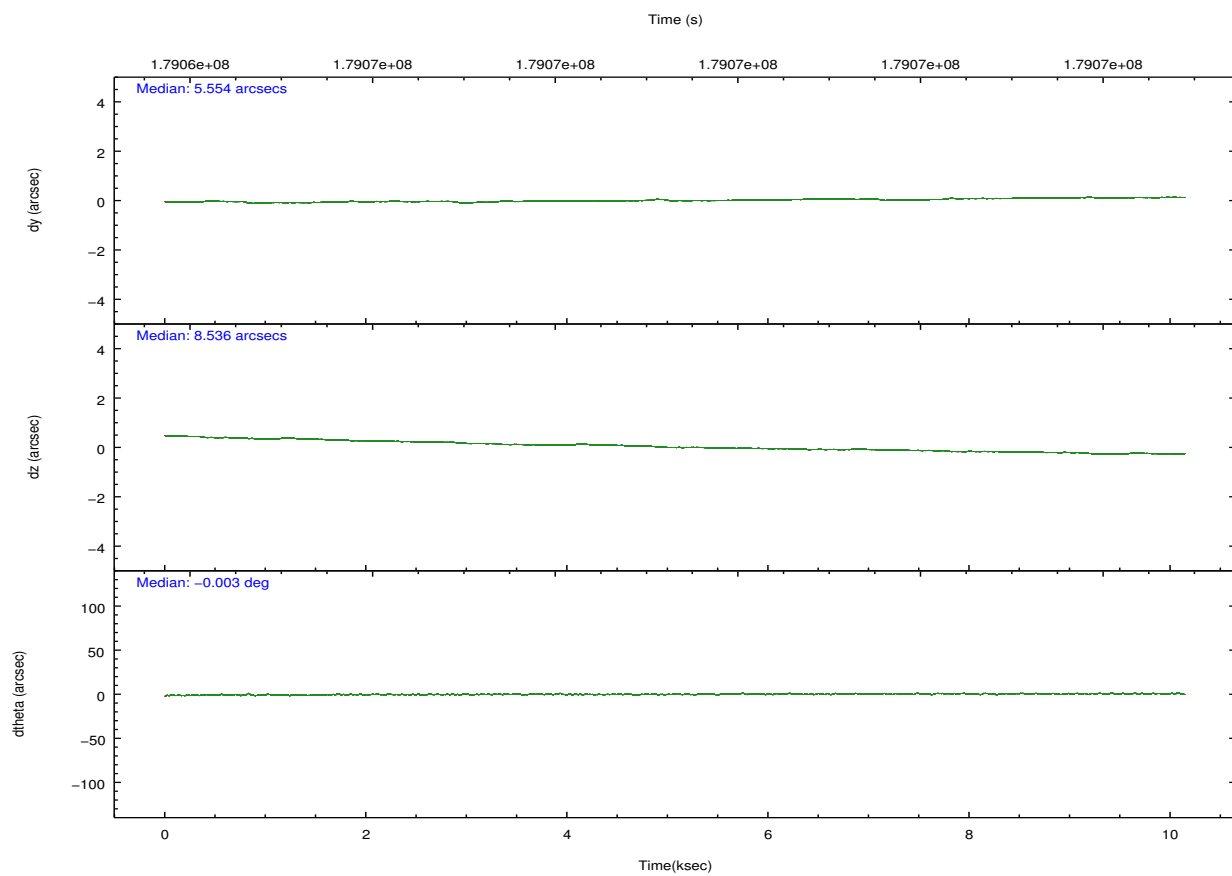
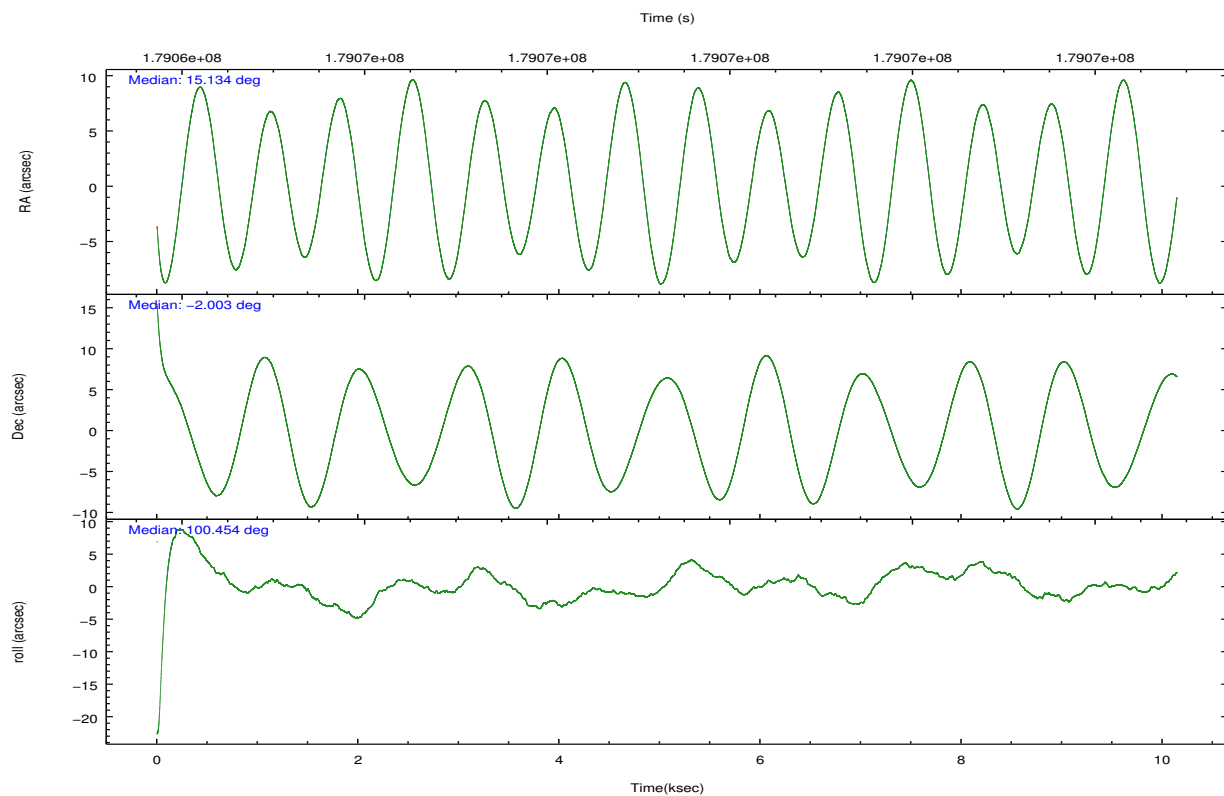
2.2 Compared Parameters

Parameter	Planned	Actual
Instrument	ACIS	ACIS
Detector	ACIS-7	ACIS-7
Grating	NONE	NONE
Data mode	FAINT	FAINT
Observation mode	POINTING	POINTING
[deg] Pointing RA	15.152067	15.1340469790473
[deg] Pointing Dec	-2.023670	-2.003152237307521
[deg] Pointing Roll	100.299515	100.4554804308832
[mm] SIM focus pos	-0.684267	-0.6828225247311905
[mm] SIM defocus	0	0.001444936568705701
[mm] SIM translation stage pos	-190.132523	-190.1425803651734
[mm] SIM translation stage offset	0	0.01005778216563158
[s] Observation start time (MET)	179064388.184000	179063156.0934
Observation start date	2003-09-04T12:05:24	2003-09-04T11:45:56
[s] Observation end time (MET)	179074388.184000	179074797.5314
Observation end date	2003-09-04T14:52:04	2003-09-04T14:59:57
Read mode	TIMED	TIMED

Parameter	Planned	Actual
Obspar format version number	7	7
Obspar file type	PREDICTED	ACTUAL
Obspar update status	NONE	UPDATED
Number of optional ACIS chips dropped	0	0
On-chip summing requested	N	N
Subarray requested	CUSTOM	1/8
Subarray start row	449	449
Subarray row count	128	128
Alternating exposures requested	N	N
[s] Primary exposure time	0.000000	0.4

2.3 Aspect



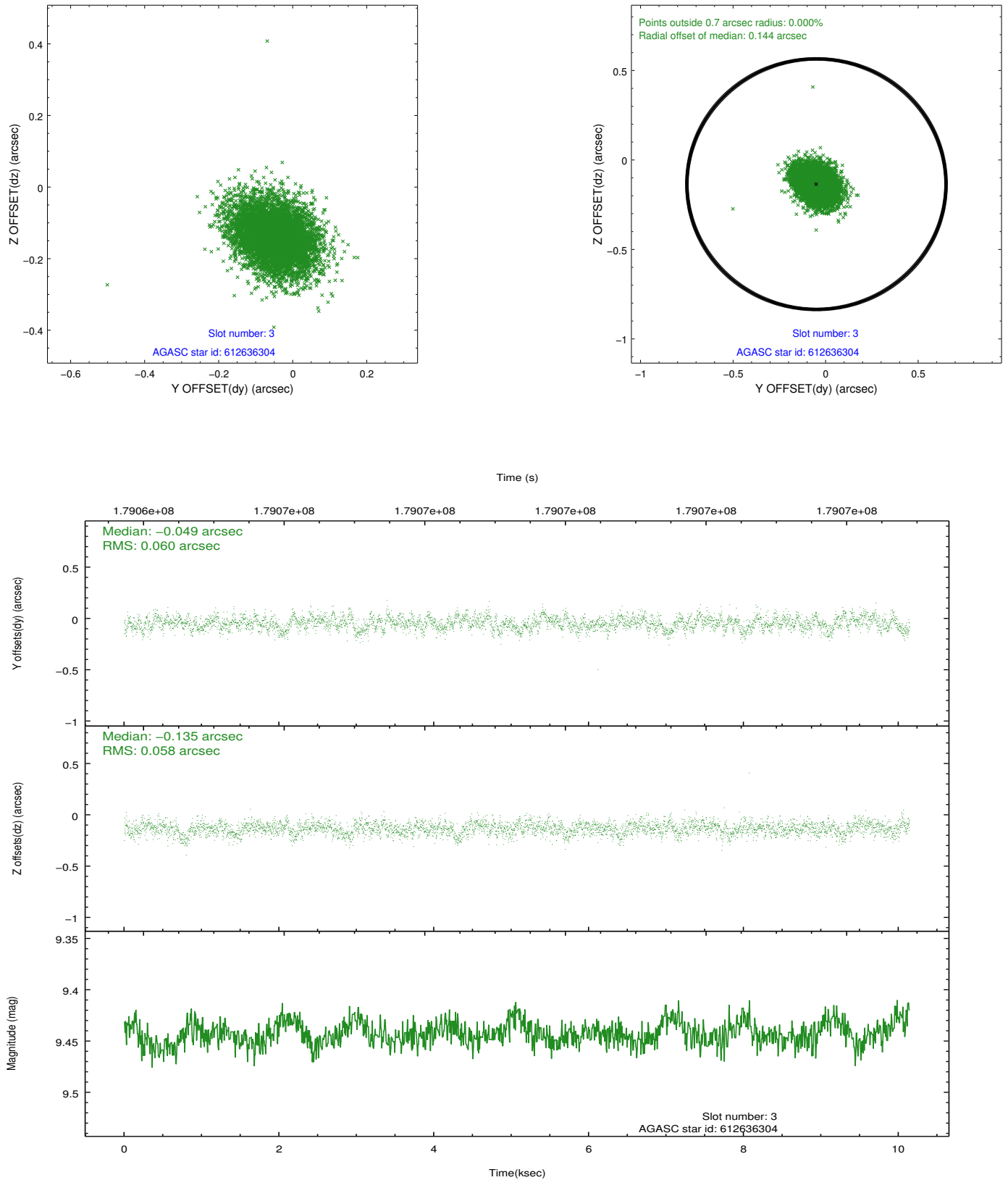


Slot Statistics

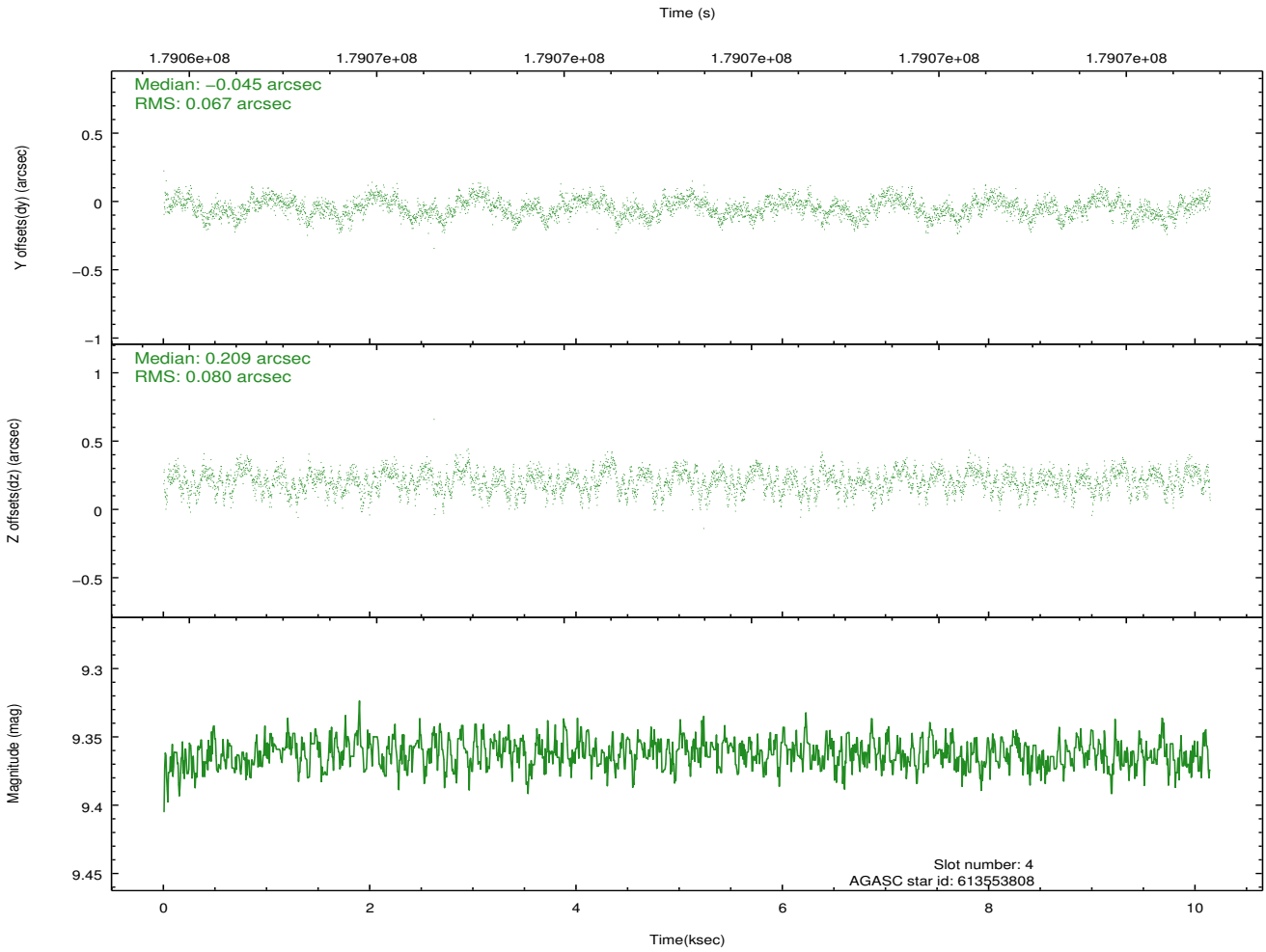
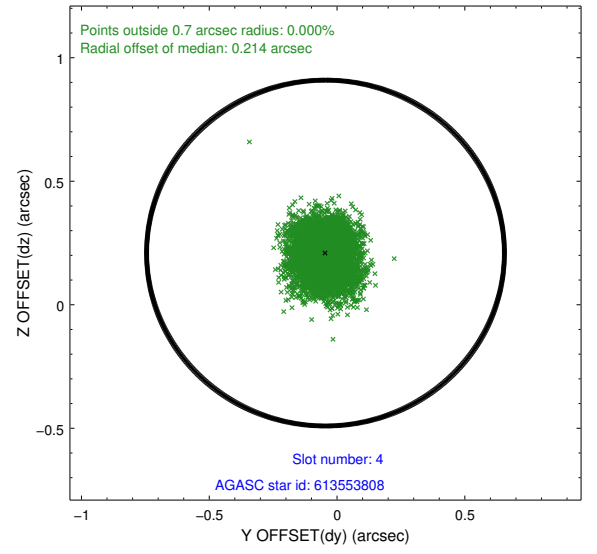
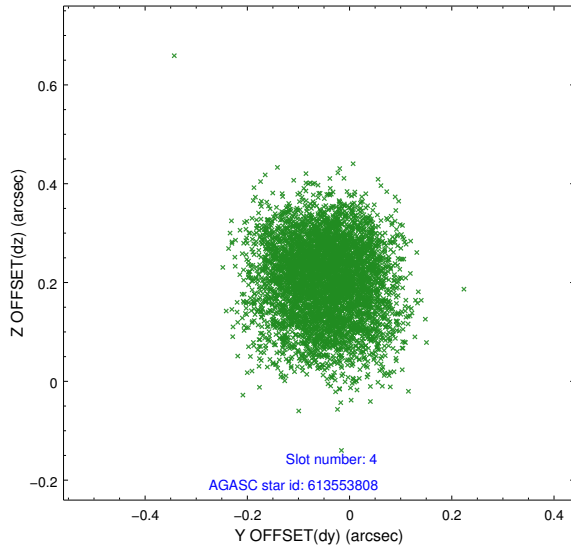
slot	status	id	mag	n_pts	med_dy	med_dz	dr1	dr2	ra	dec	mean_y	mean_z
0	FID	ACIS-S-2	7.11	2475	-0.040	-0.048	0.008	0.013	0.000000	0.000000	-758.34	-1729.78
1	FID	ACIS-S-4	7.21	2475	0.079	0.032	0.008	0.013	0.000000	0.000000	2154.84	178.22
2	FID	ACIS-S-5	7.23	2475	-0.070	0.024	0.006	0.010	0.000000	0.000000	-1810.52	172.51
3	GUIDE	612636304	9.44	4947	-0.049	-0.135	0.089	0.144	14.786242	-2.099418	-33.31	1343.56
4	GUIDE	613553808	9.36	4946	-0.045	0.209	0.112	0.176	15.804109	-2.020754	-409.38	-2309.35
5	GUIDE	613557592	8.81	4948	0.023	0.073	0.058	0.095	15.282401	-1.706634	1039.17	-665.75
6	GUIDE	613559664	9.26	4948	0.026	-0.096	0.085	0.137	15.022890	-1.524679	1850.95	136.09
7	GUIDE	613558224	9.41	4947	0.046	-0.041	0.118	0.182	15.897576	-2.505292	-2185.37	-2328.08

2.4 Star Slots

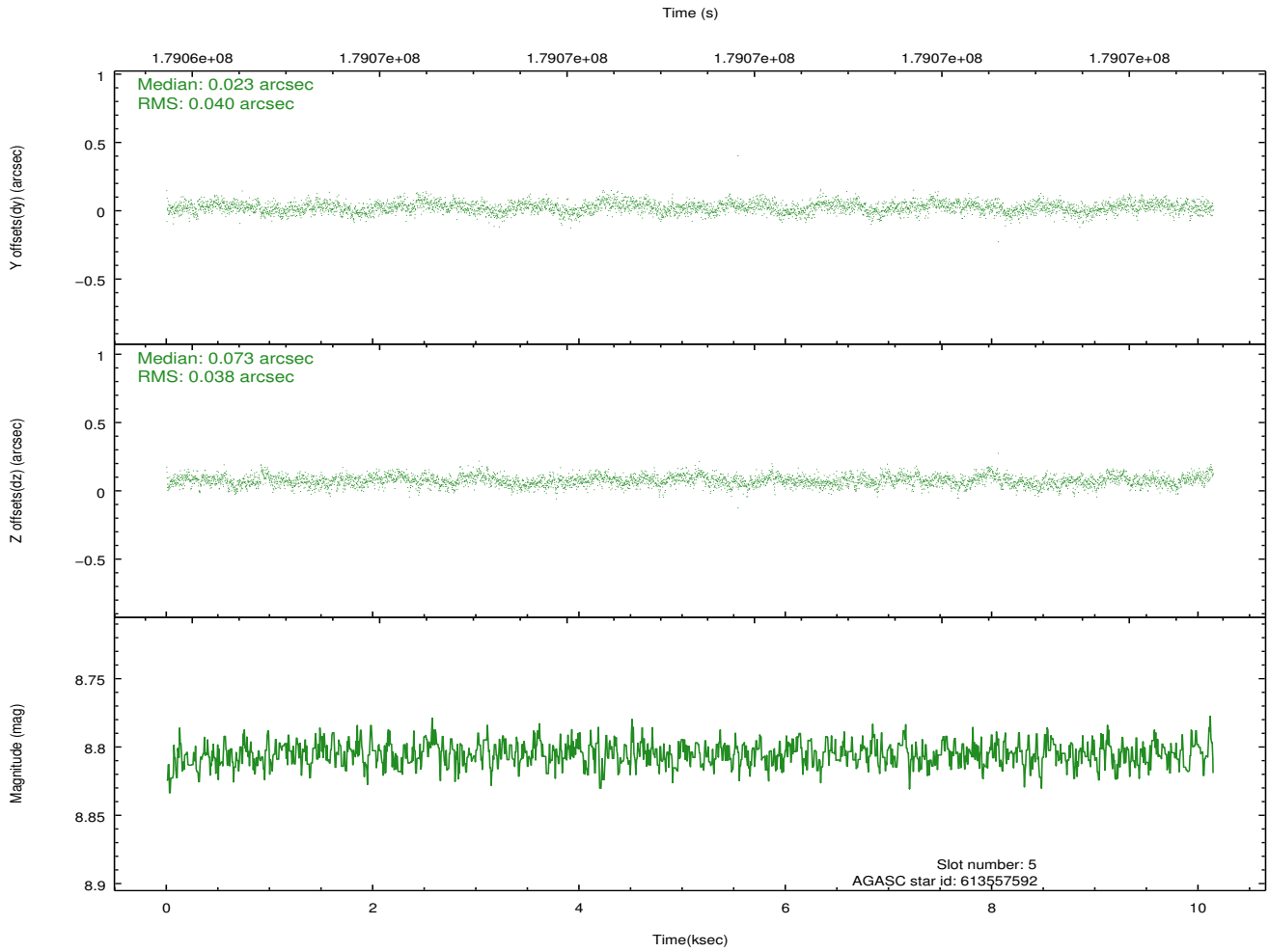
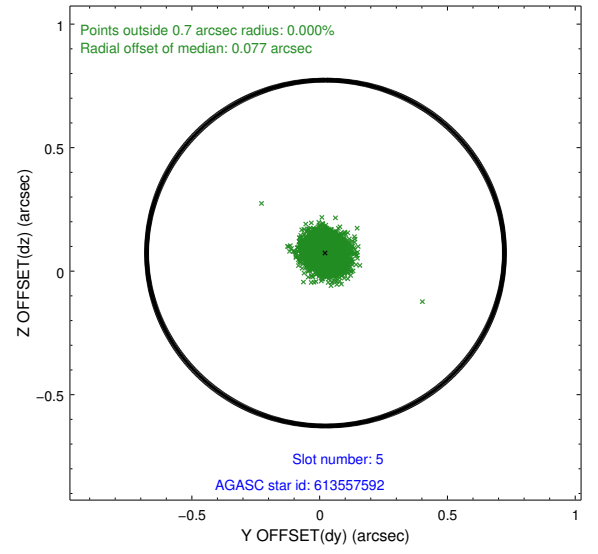
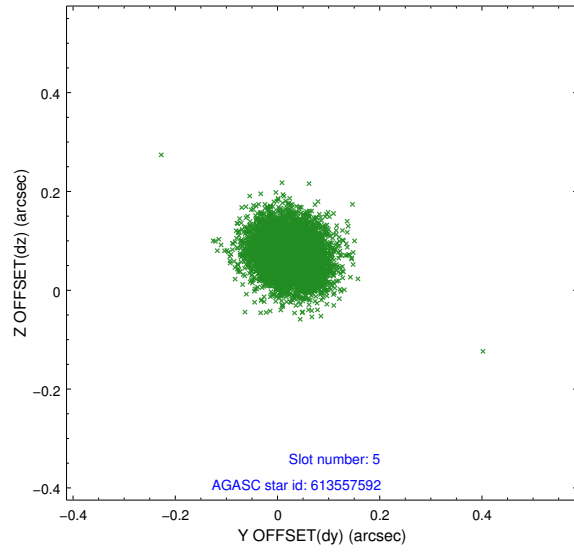
2.4.1 Slot 3



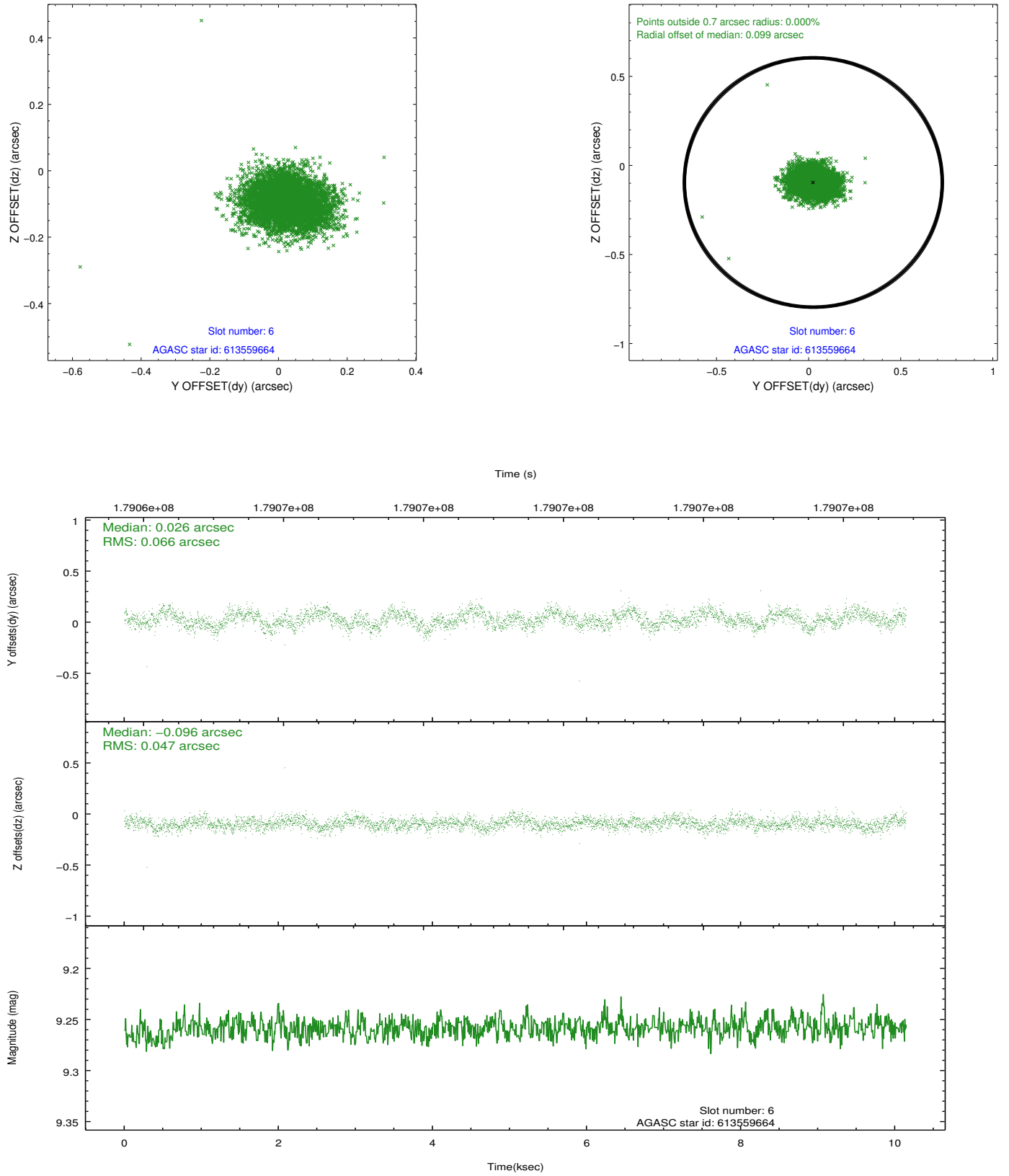
2.4.2 Slot 4



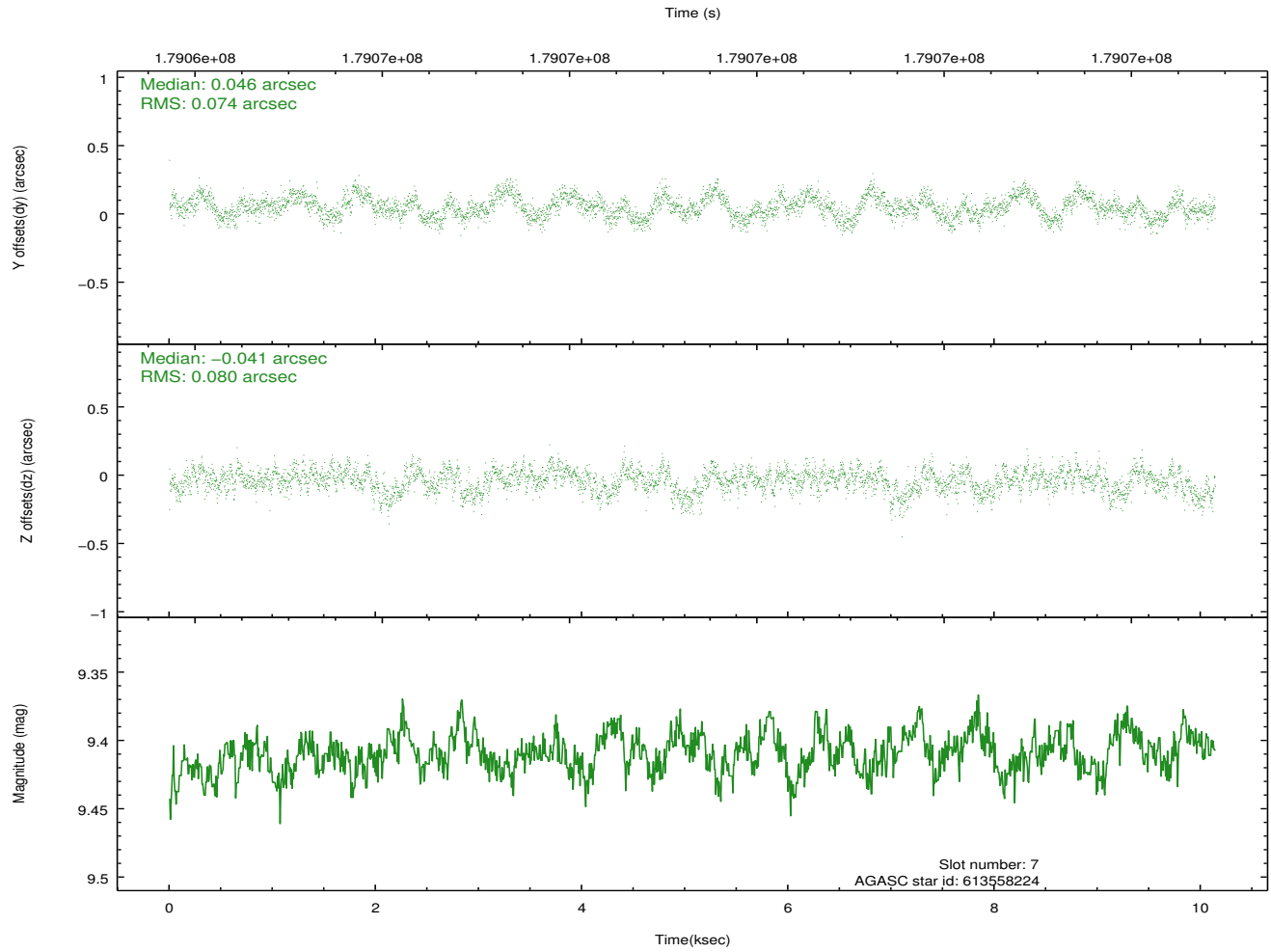
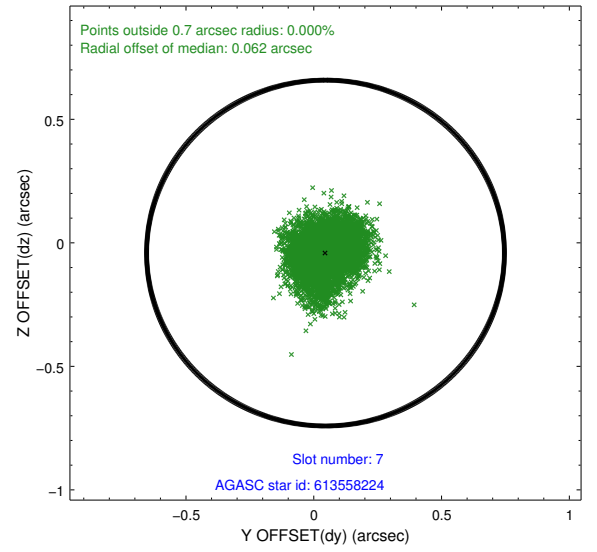
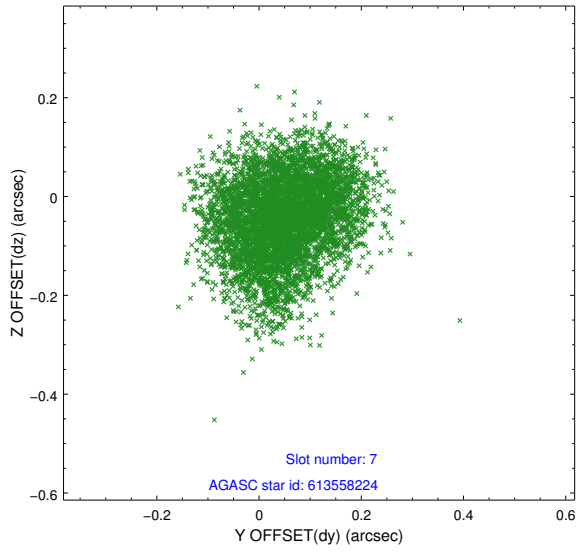
2.4.3 Slot 5



2.4.4 Slot 6

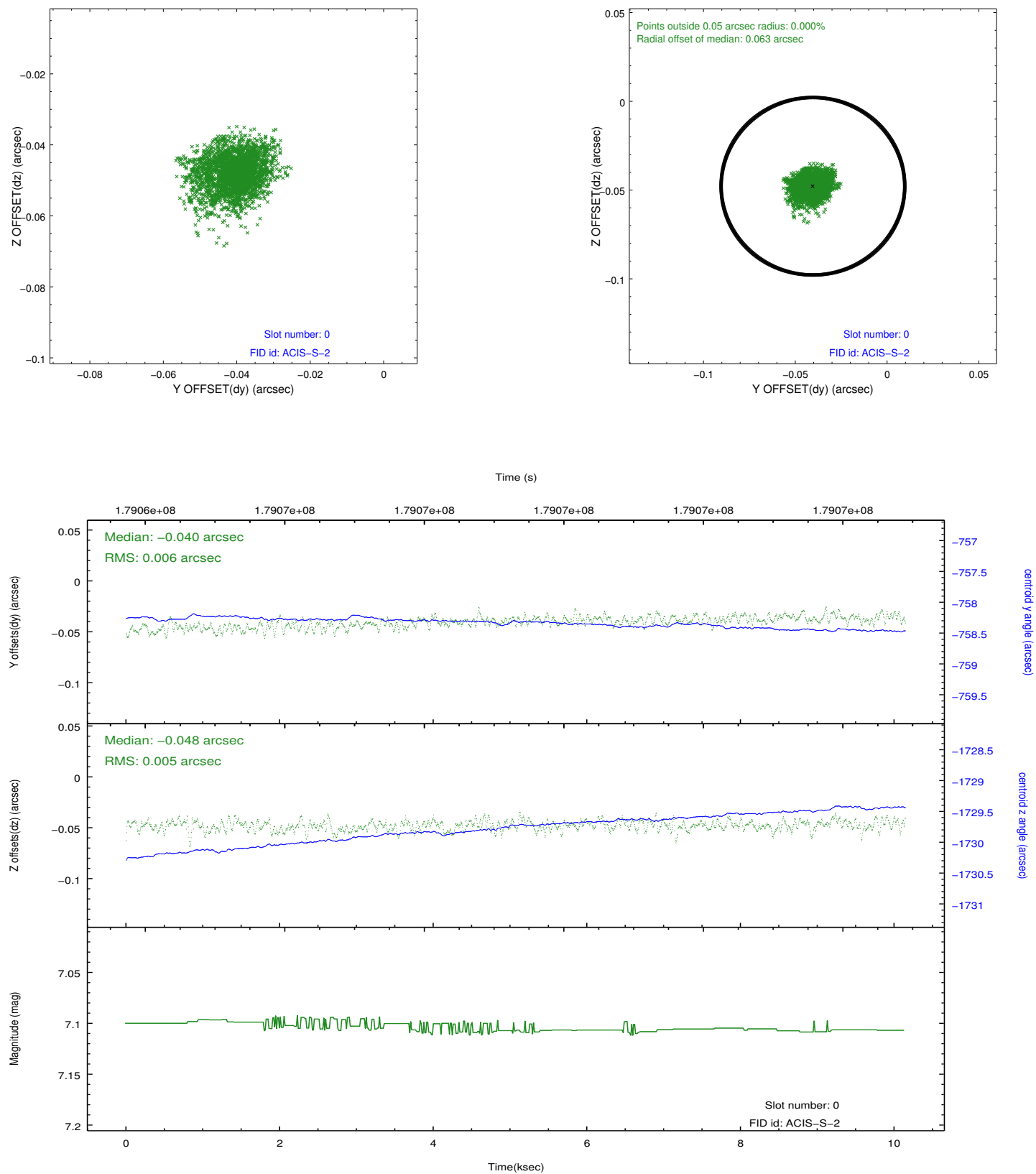


2.4.5 Slot 7

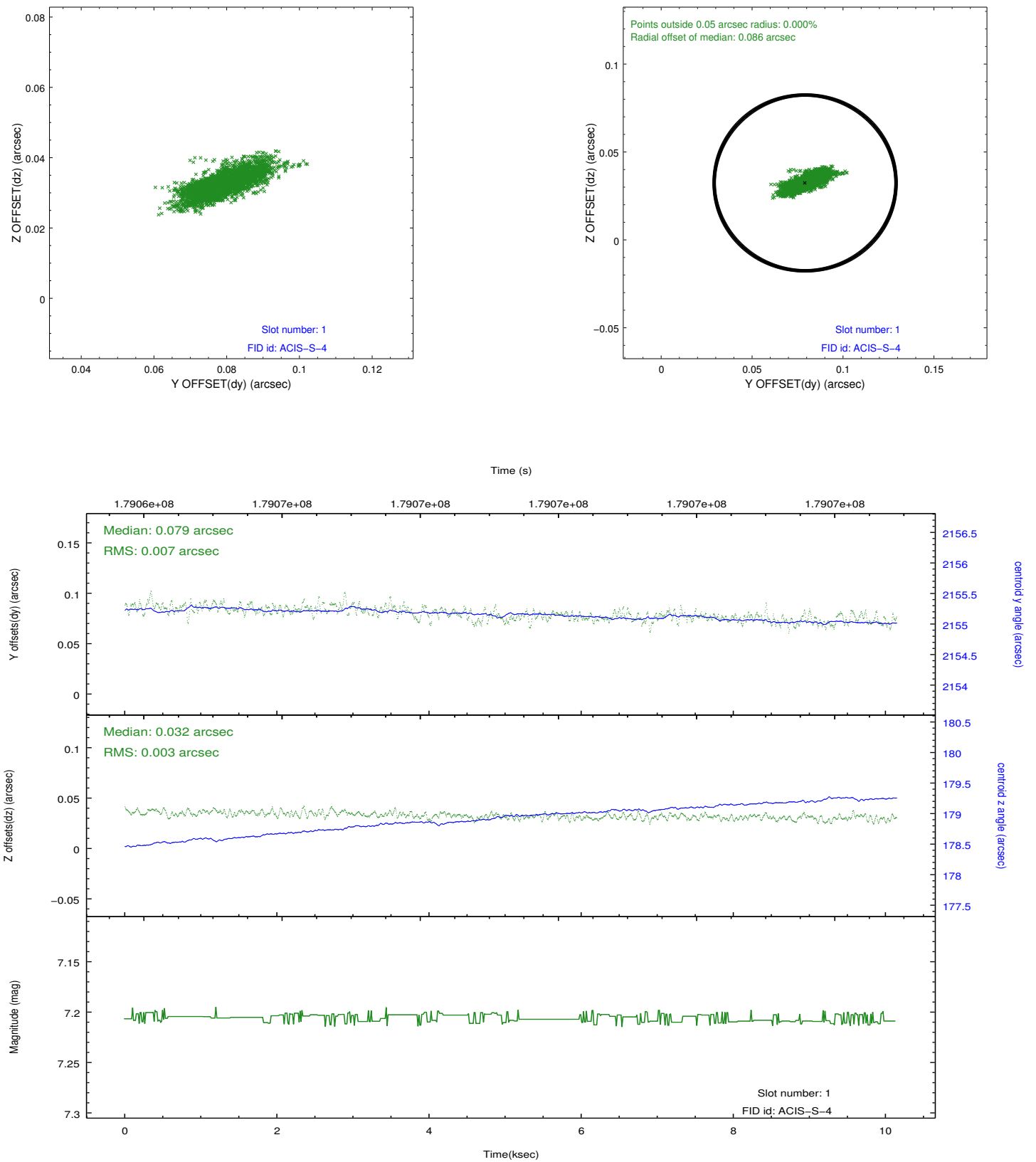


2.5 FID Slots

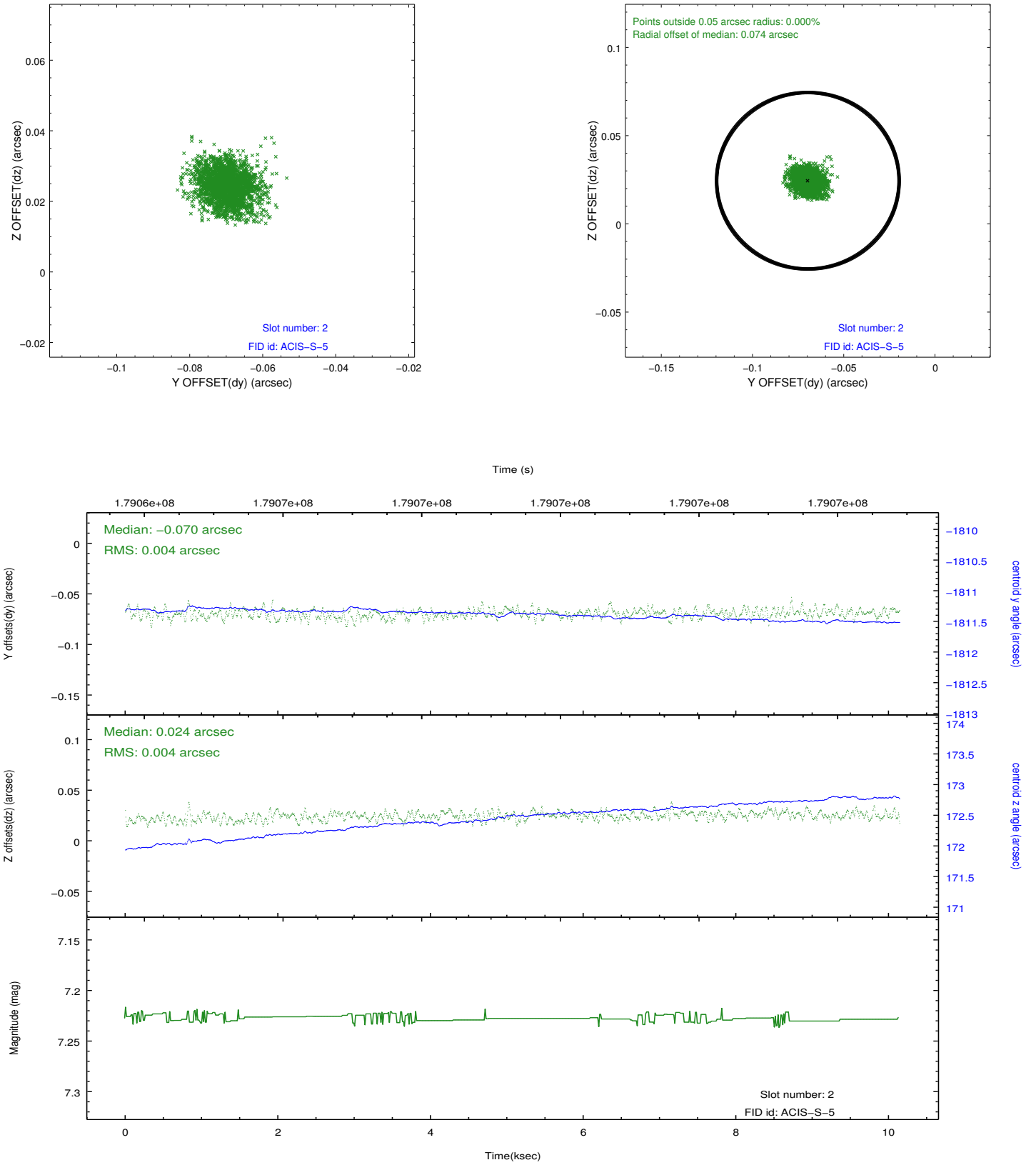
2.5.1 Slot 0



2.5.2 Slot 1



2.5.3 Slot 2



A Summary

A.1 Status

V&V Scientist	Jen Lauer
V&V Date (YYYY-MM-DD)	2012.11.29
V&V Edition	1
V&V Disposition and Status	OK
V&V Charge Time	10.142

A.2 Comments