

V&V Reference Report

L2 ASCDS Version : 7.6.8

Observation 4131 - L2 Version 001
Chandra X-Ray Center

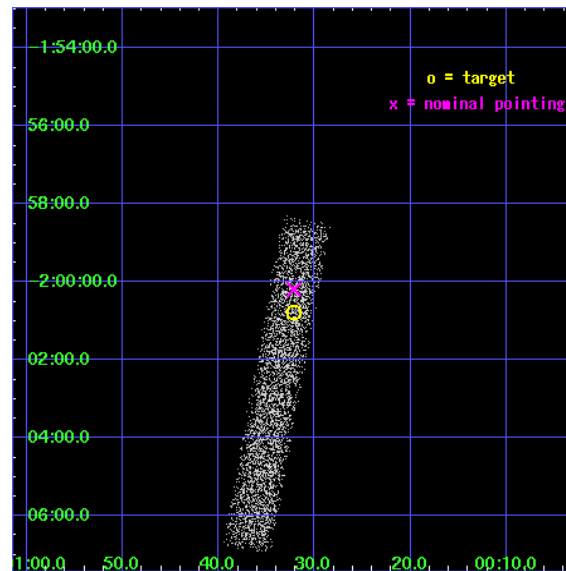
L2 Processing Date : Jul 5 2006

Contents

1	Front	2
2	OBI	3
2.1	OBI	3
2.1.1	Images	3
2.1.2	Bias	3
2.1.3	Parameters	4
2.1.4	Events	4
2.2	Compared Parameters	5
2.3	Aspect	6
2.4	Star Slots	9
2.4.1	Slot 3	9
2.4.2	Slot 4	10
2.4.3	Slot 5	11
2.4.4	Slot 6	12
2.4.5	Slot 7	13
2.5	FID Slots	14
2.5.1	Slot 0	14
2.5.2	Slot 1	15
2.5.3	Slot 2	16
3	Point Sources	17
A	Summary	18
A.1	Status	18
A.2	Comments	18

1 Front

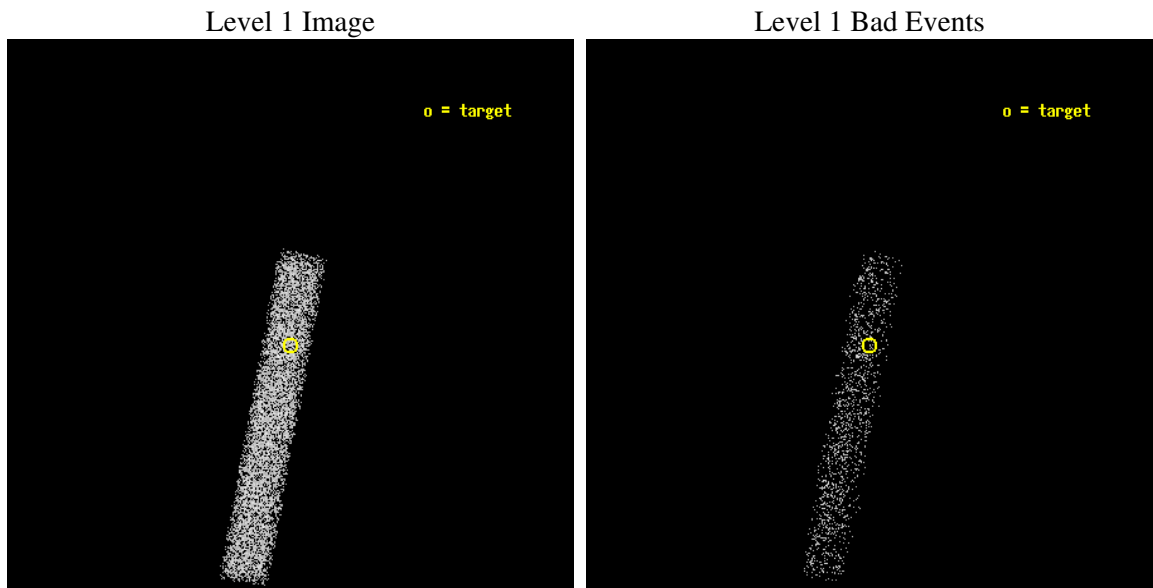
seq_num	700810
obs_id	4131
title	CHANDRA OBSERVATIONS OF THE FIRST SAMPLE OF RADIO-LOUD NARROW LINE SEYFERT I GALAXIES
observer	Dr. Sally Laurent-Muehleisen
object	FIRST J010032-020046
dtcycle	0
cycle	P
ra_targ	15.134167
dec_targ	-2.012861
ra_nom	15.134051948267
dec_nom	-2.003179567547
roll_nom	100.45548059779
revision	2
ontime	10142.800151139
livetime	9198.984356194
ontime7	10142.800151139
l2events	4668



2 OBI

2.1 OBI

2.1.1 Images



2.1.2 Bias

Chip 7



2.1.3 Parameters

obi_num	0
ascdsver	7.6.8
caldbver	3.2.2
date	2006-07-06T00:47:25
revision	2

sched_exp_time	10000.000000
ontime	11233.177081078
ontime7	11233.177081078
l1events	12288

2.1.4 Events

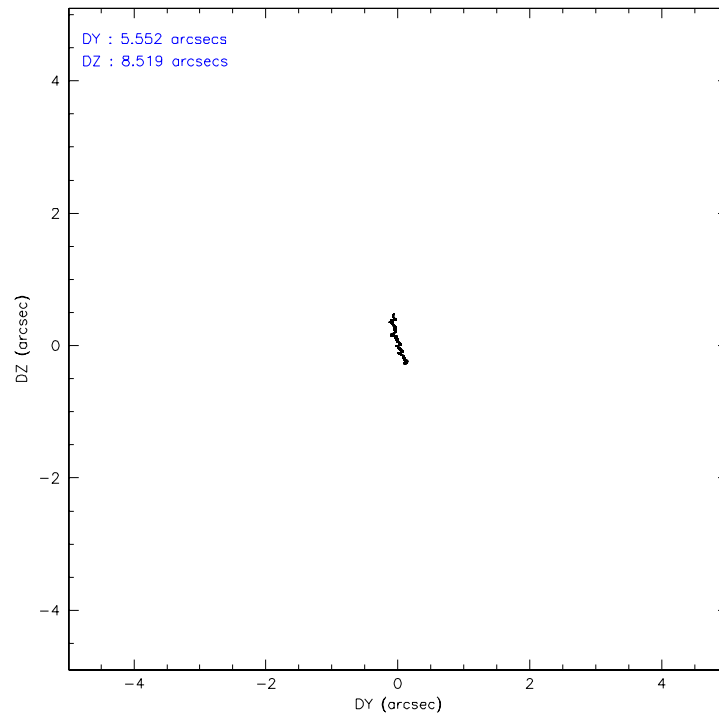
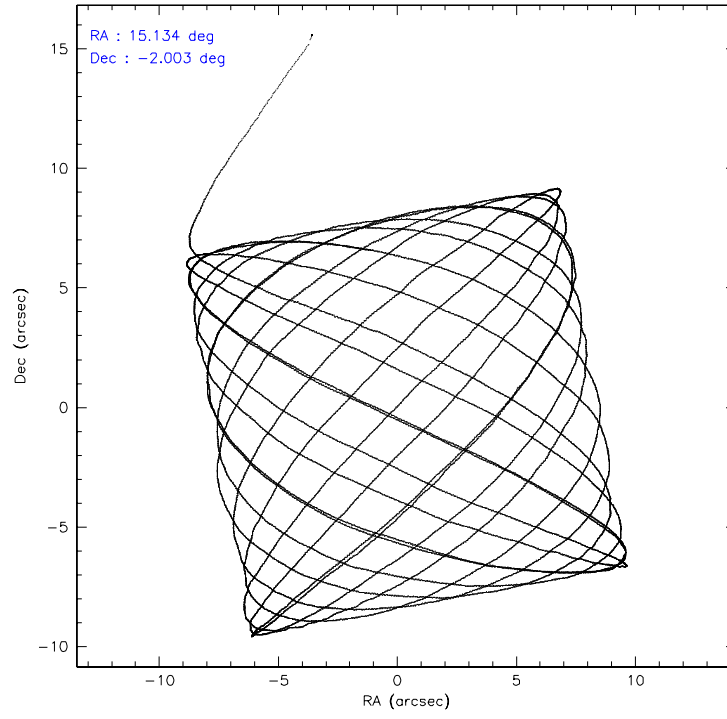
	ccd 7
level 1 events	12288
rejected events	7399
rejected %	60%

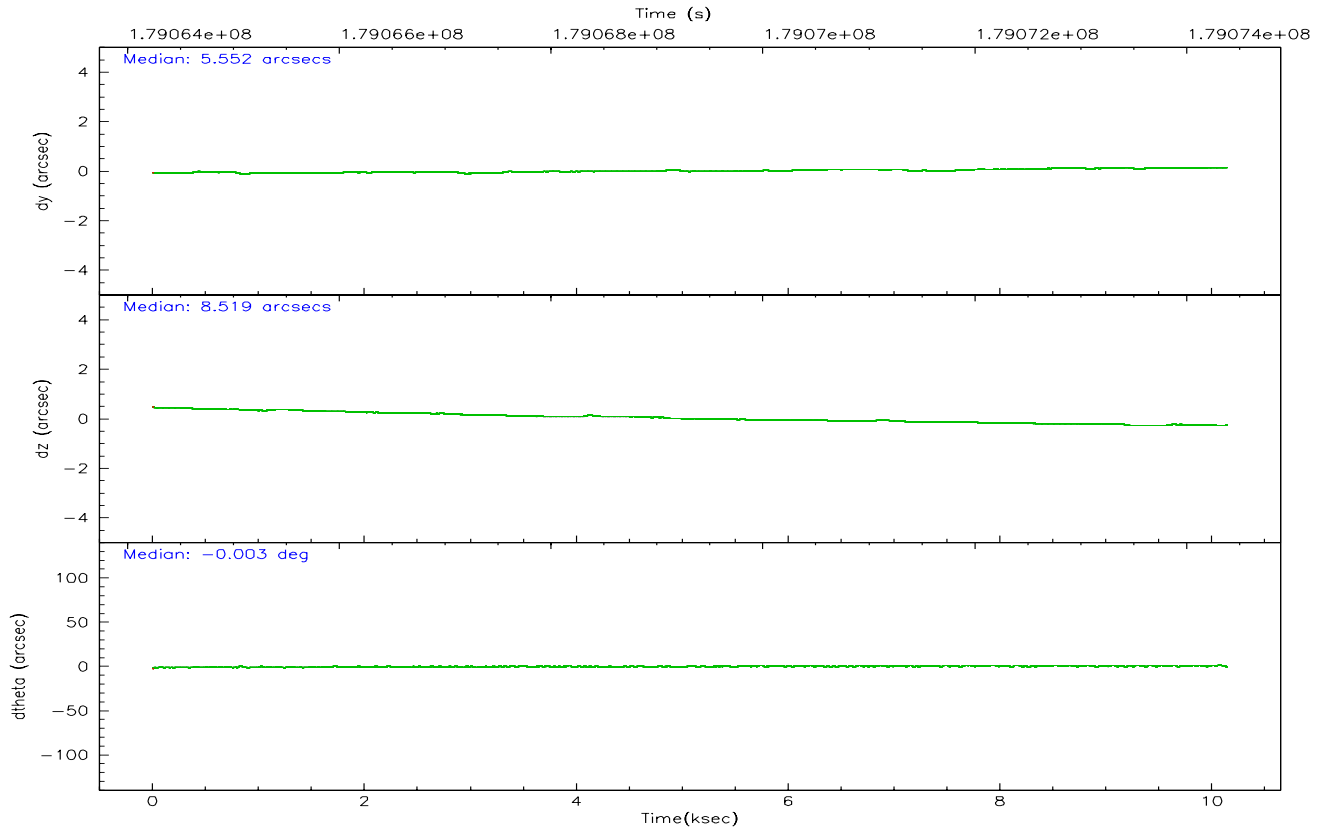
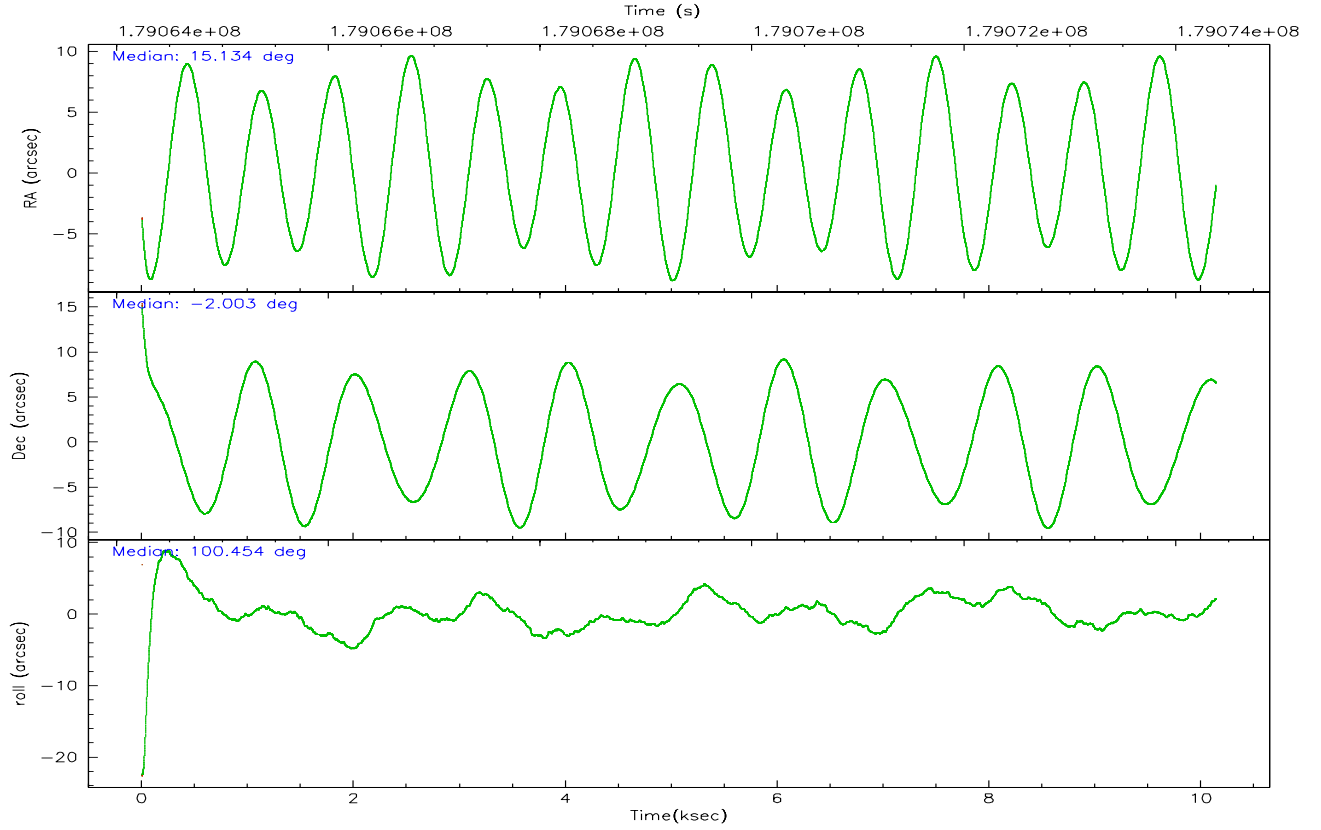
	ccd 7
grade 0 events	403
	3%
grade 1 events	5
	0%
grade 2 events	1214
	9%
grade 3 events	612
	4%
grade 4 events	524
	4%
grade 5 events	898
	7%
grade 6 events	2671
	21%
grade 7 events	5961
	48%

2.2 Compared Parameters

Parameter	Planned	Actual	Parameter	Planned	Actual
Instrument	ACIS	ACIS	Obspar format version number	6	6
Detector	ACIS-7	ACIS-7	Obspar file type	PREDICTED	ACTUAL
Grating	NONE	NONE	Obspar update status	NONE	UPDATED
Data mode	FAINT	FAINT	On-chip summing requested	N	N
Observation mode	POINTING	POINTING	Subarray requested	1/8	1/8
Pointing RA	15.152067	15.13405194826667	Subarray start row	0	449
Pointing Dec	-2.023670	-2.003179567546977	Subarray row count	1024	128
Pointing Roll	100.299515	100.4554805977949	Alternating exposures requested	N	N
SIM focus pos (mm)	-0.684267	-0.6828225247311905	Primary exposure time	0.000000	0.4
SIM defocus (mm)	0	0.001444936568705701			
SIM translation stage pos (mm)	-190.132523	-190.1425803651734			
SIM translation stage offset (mm)	0	0.01005778216563158			
Observation start time	179064388.184000	179063156.0934			
Observation start date	2003-09-04T12:05:24	2003-09-04T11:45:56			
Observation end time	179074388.184000	179074797.5314			
Observation end date	2003-09-04T14:52:04	2003-09-04T14:59:57			
Read mode	TIMED	TIMED			

2.3 Aspect



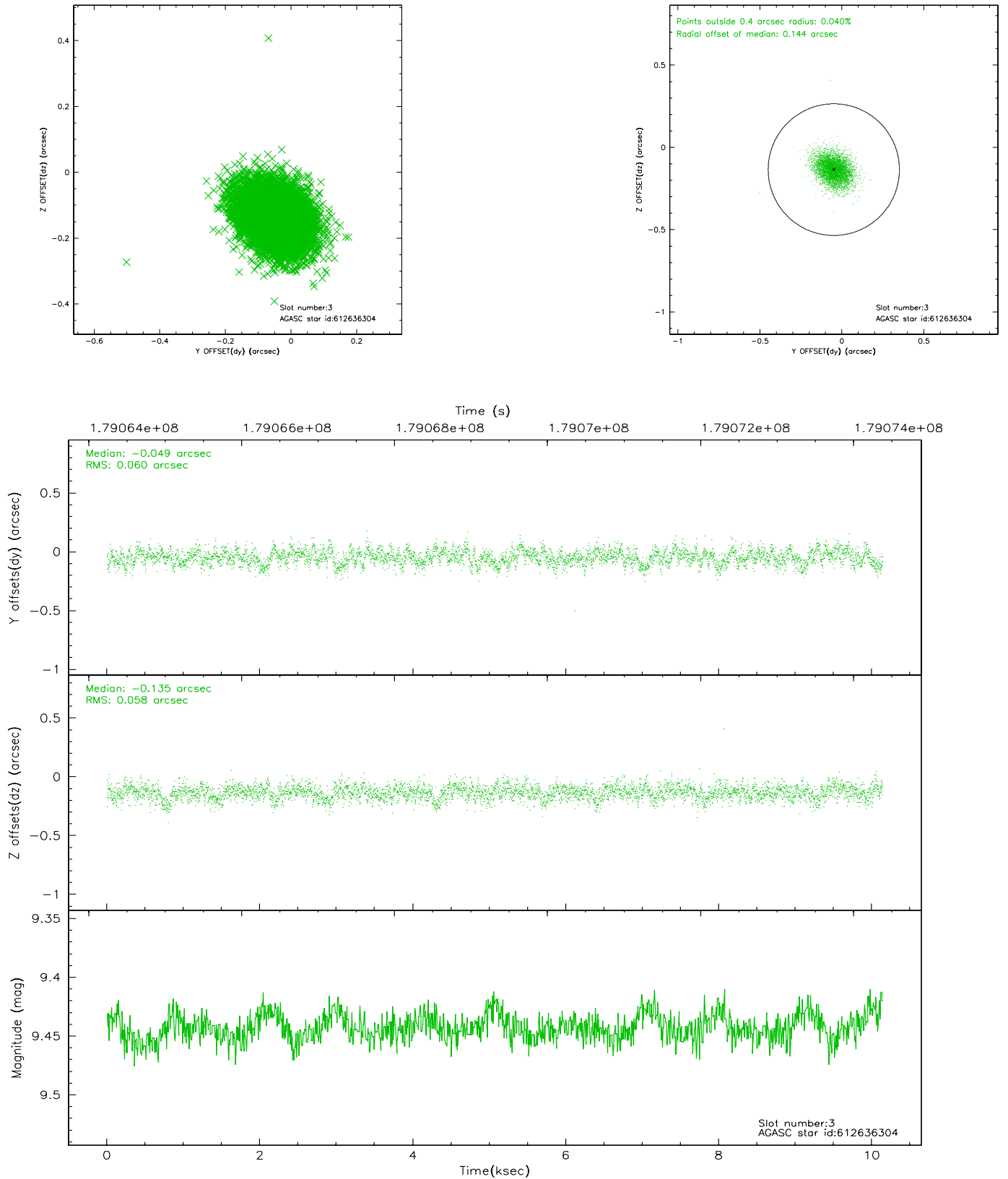


Slot Statistics

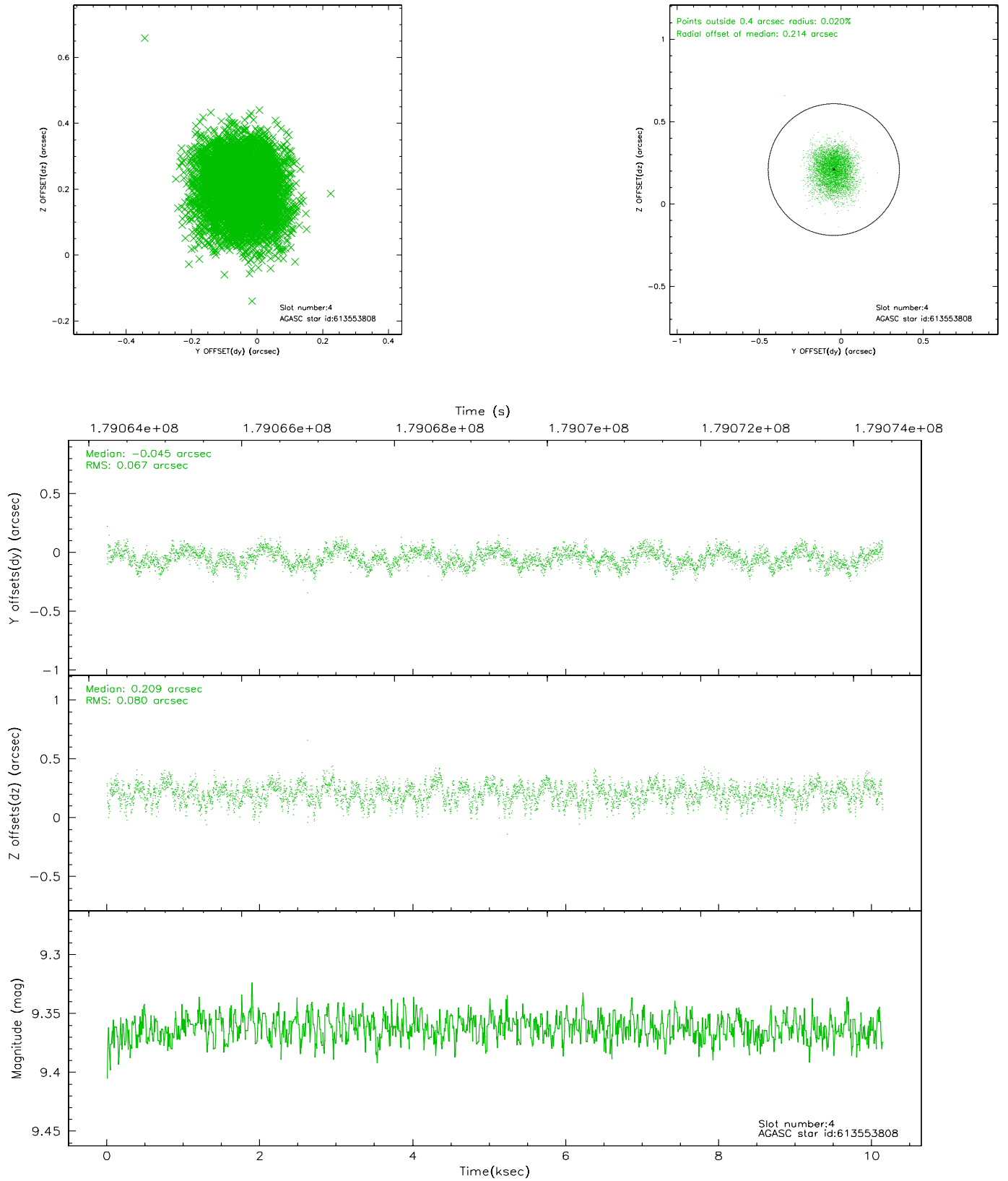
slot	status	id	mag	n_pts	med_dy	med_dz	dr1	dr2	ra	dec	mean_y	mean_z
0	FID	ACIS-S-2	7.11	2475	-0.029	-0.025	0.007	0.012	0.000000	0.000000	-758.32	-1729.74
1	FID	ACIS-S-4	7.21	2475	0.037	0.021	0.005	0.009	0.000000	0.000000	2154.80	178.23
2	FID	ACIS-S-5	7.23	2475	-0.039	0.013	0.006	0.011	0.000000	0.000000	-1810.49	172.52
3	GUIDE	612636304	9.44	4947	-0.049	-0.135	0.089	0.144	14.786242	-2.099418	-33.31	1343.56
4	GUIDE	613553808	9.36	4946	-0.045	0.209	0.112	0.176	15.804109	-2.020754	-409.38	-2309.35
5	GUIDE	613557592	8.81	4948	0.023	0.073	0.058	0.095	15.282401	-1.706634	1039.17	-665.75
6	GUIDE	613559664	9.26	4948	0.026	-0.096	0.085	0.137	15.022890	-1.524679	1850.95	136.09
7	GUIDE	613558224	9.41	4947	0.046	-0.041	0.118	0.182	15.897576	-2.505292	-2185.37	-2328.08

2.4 Star Slots

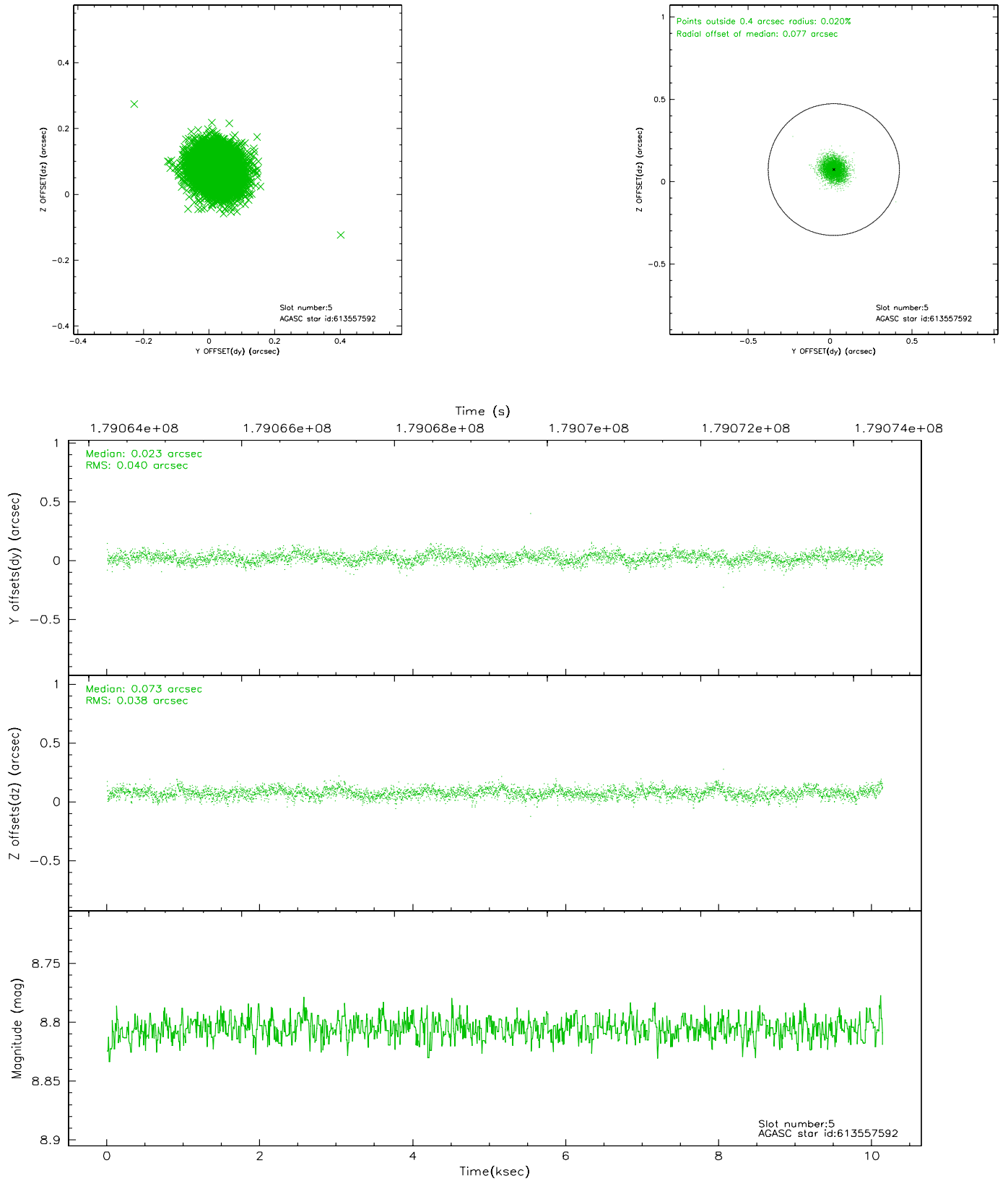
2.4.1 Slot 3



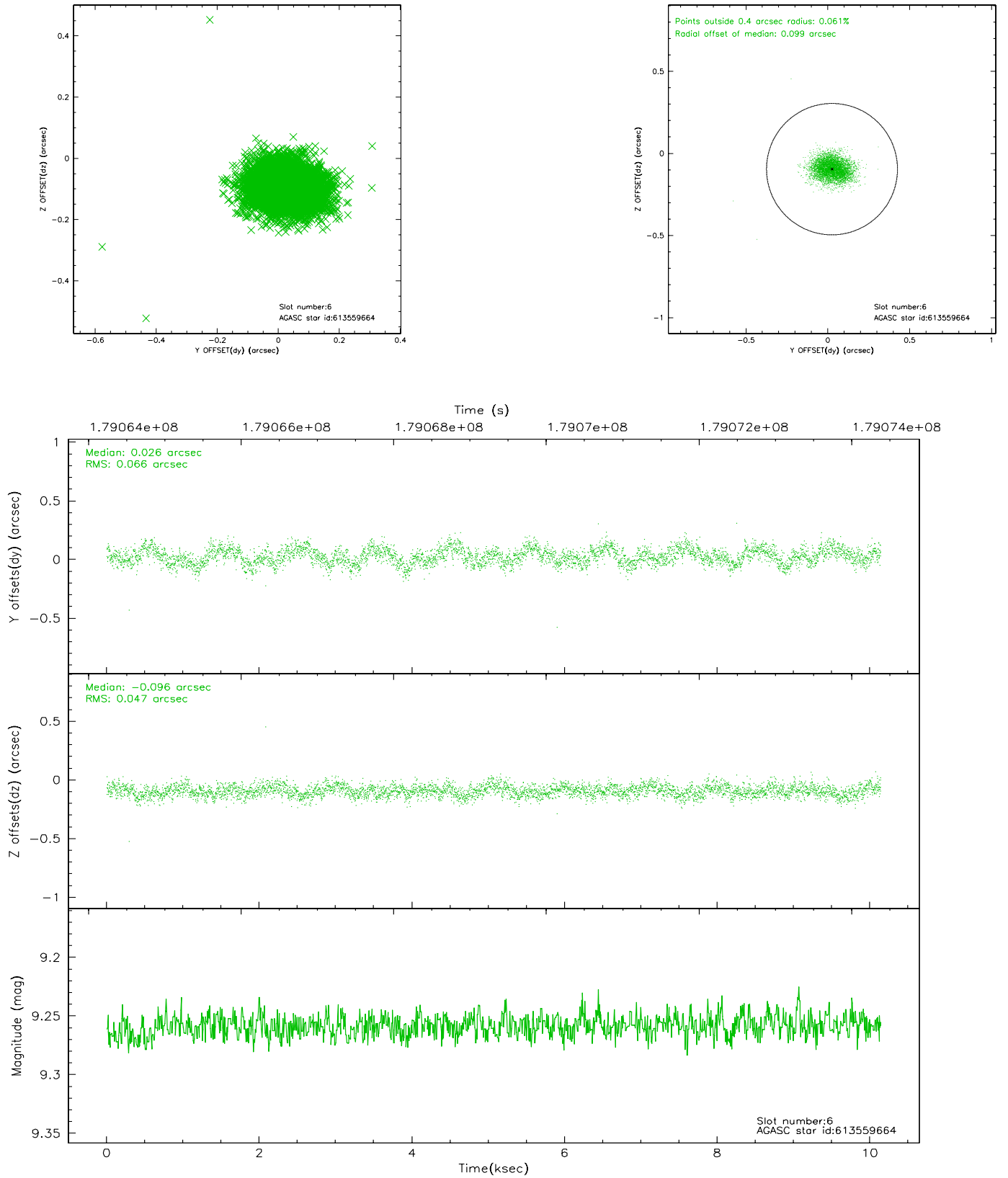
2.4.2 Slot 4



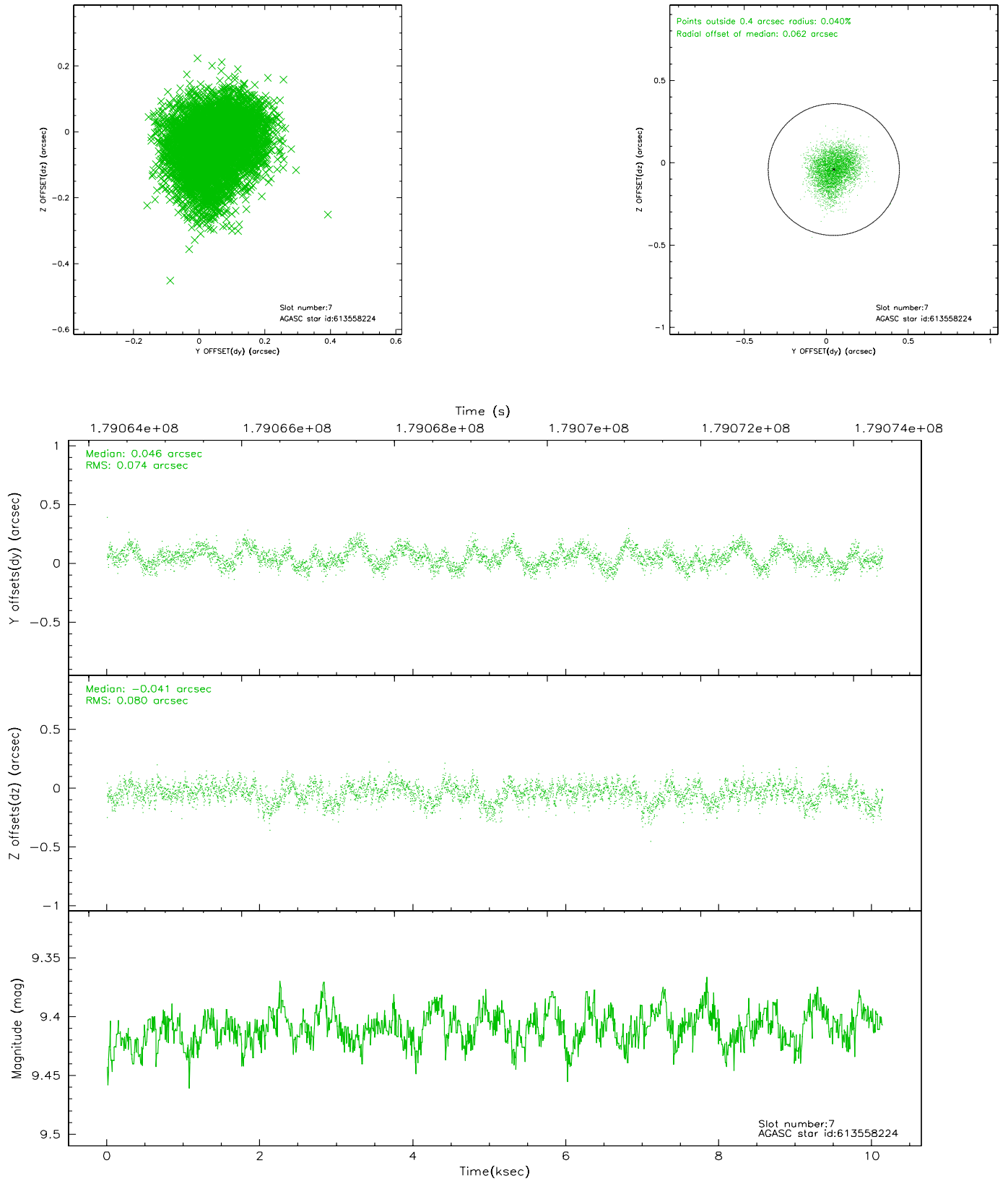
2.4.3 Slot 5



2.4.4 Slot 6

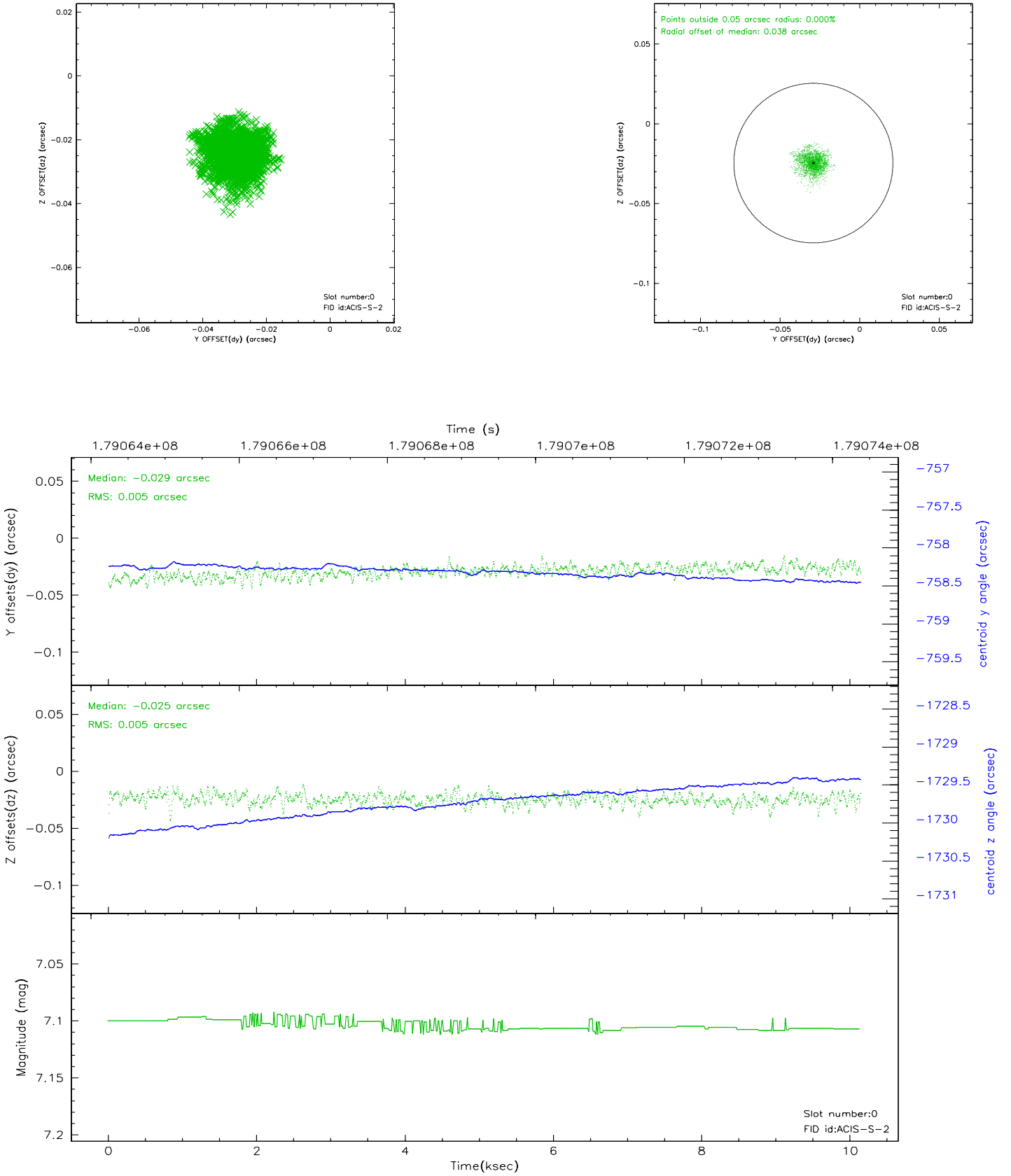


2.4.5 Slot 7

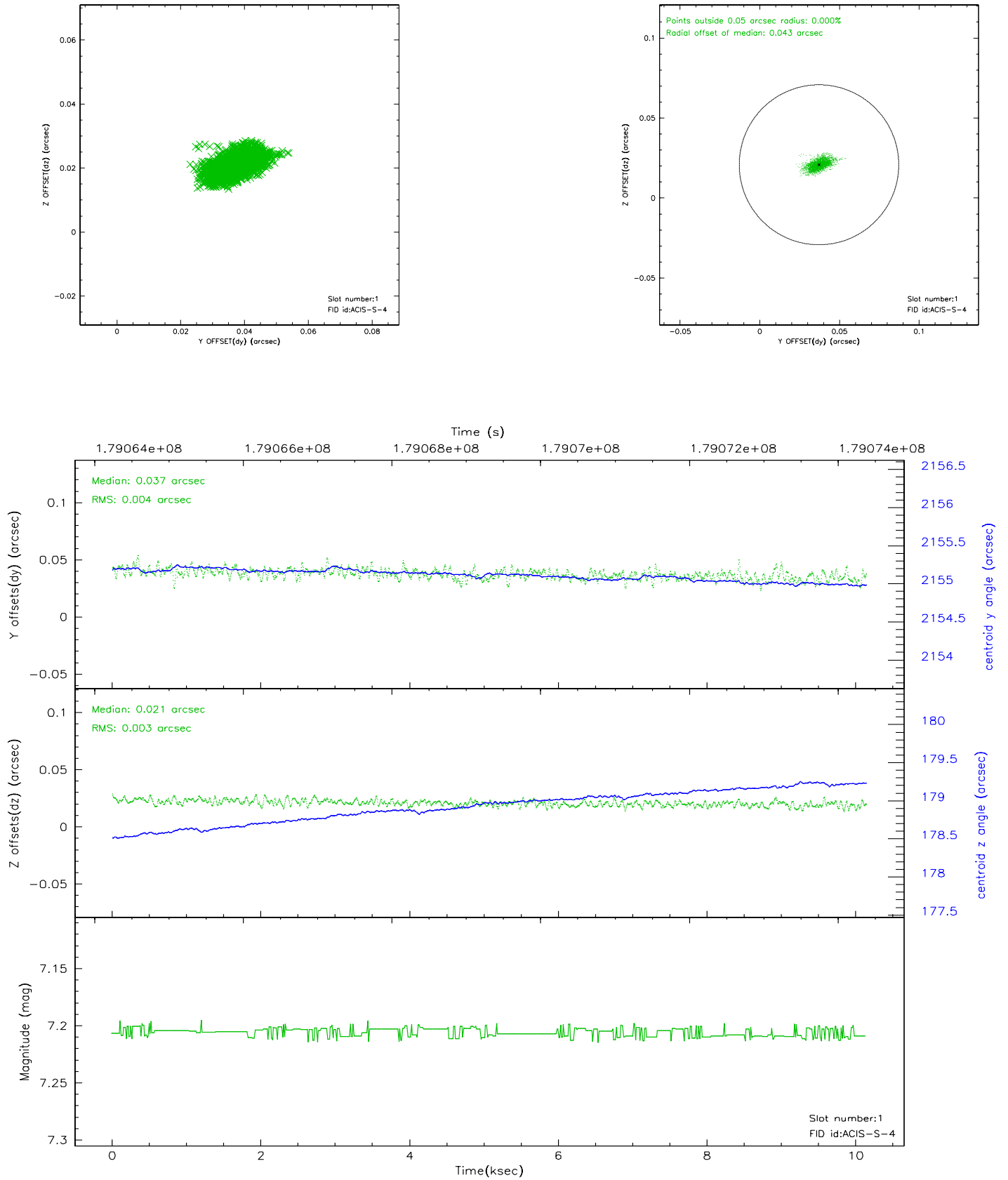


2.5 FID Slots

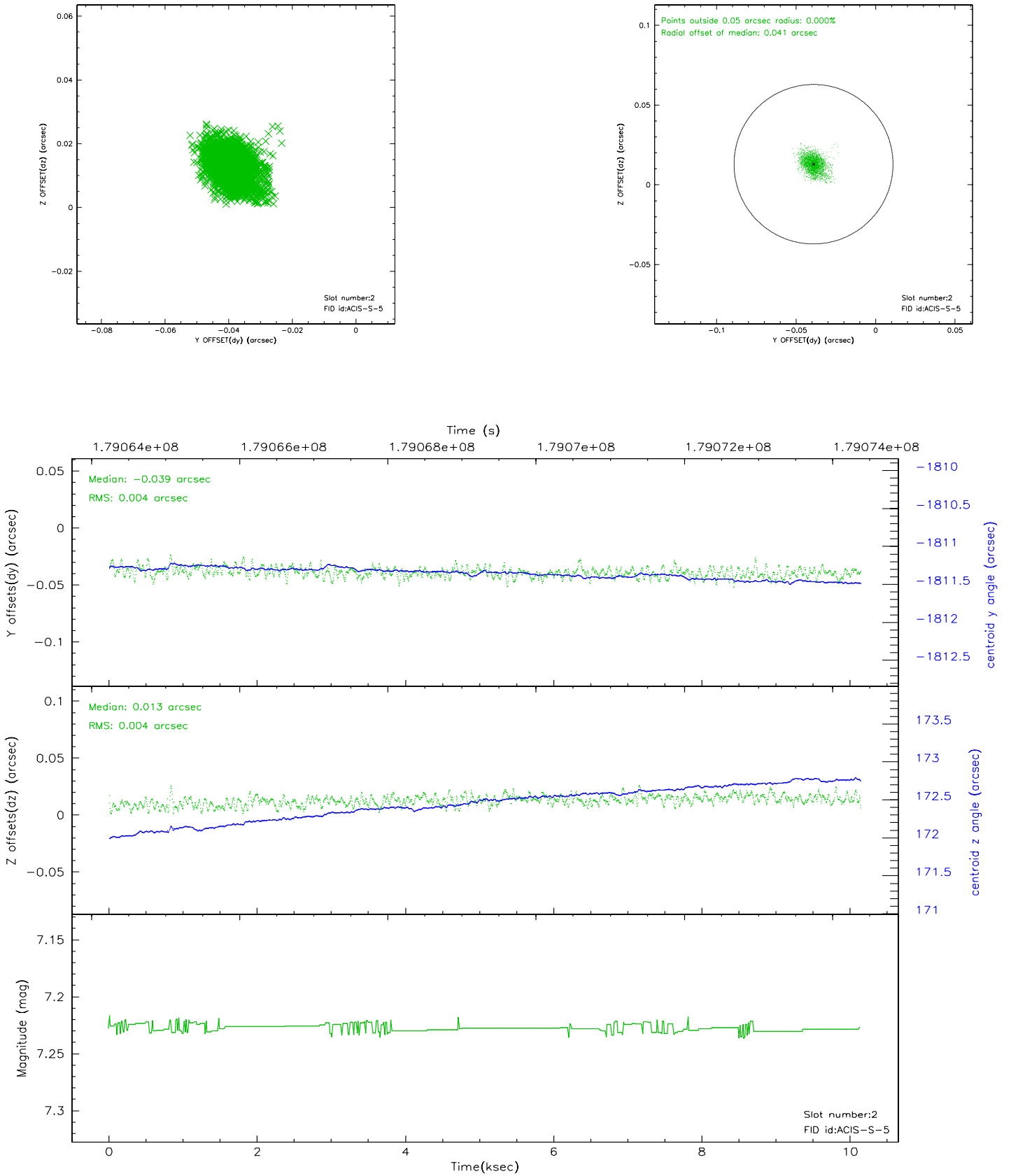
2.5.1 Slot 0



2.5.2 Slot 1



2.5.3 Slot 2



3 Point Sources

A Summary

A.1 Status

V&V Scientist	Jen Lauer
V&V Date (YYYY-MM-DD)	2006.07.06
V&V Edition	1
V&V Disposition and Status	OK
V&V Charge Time	10.142

A.2 Comments