

V&V Reference Report

L2 ASCDS Version : 8.4.5

Observation 4123 - L2 Version 4
Chandra X-Ray Center

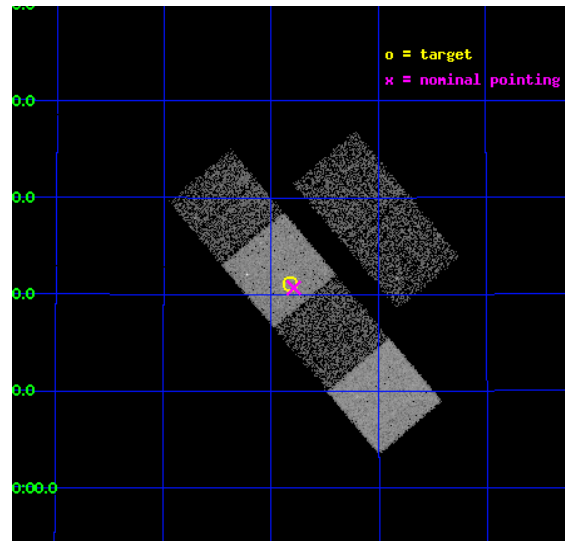
L2 Processing Date : Oct 24 2012

Contents

1	Front	2
2	OBI	3
2.1	OBI	3
2.1.1	Images	3
2.1.2	Bias	3
2.1.3	Parameters	4
2.1.4	Events	4
2.2	Compared Parameters	5
2.3	Aspect	6
2.4	Star Slots	9
2.4.1	Slot 3	9
2.4.2	Slot 4	10
2.4.3	Slot 5	11
2.4.4	Slot 6	12
2.4.5	Slot 7	13
2.5	FID Slots	14
2.5.1	Slot 0	14
2.5.2	Slot 1	15
2.5.3	Slot 2	16
A	Summary	17
A.1	Status	17
A.2	Comments	17

1 Front

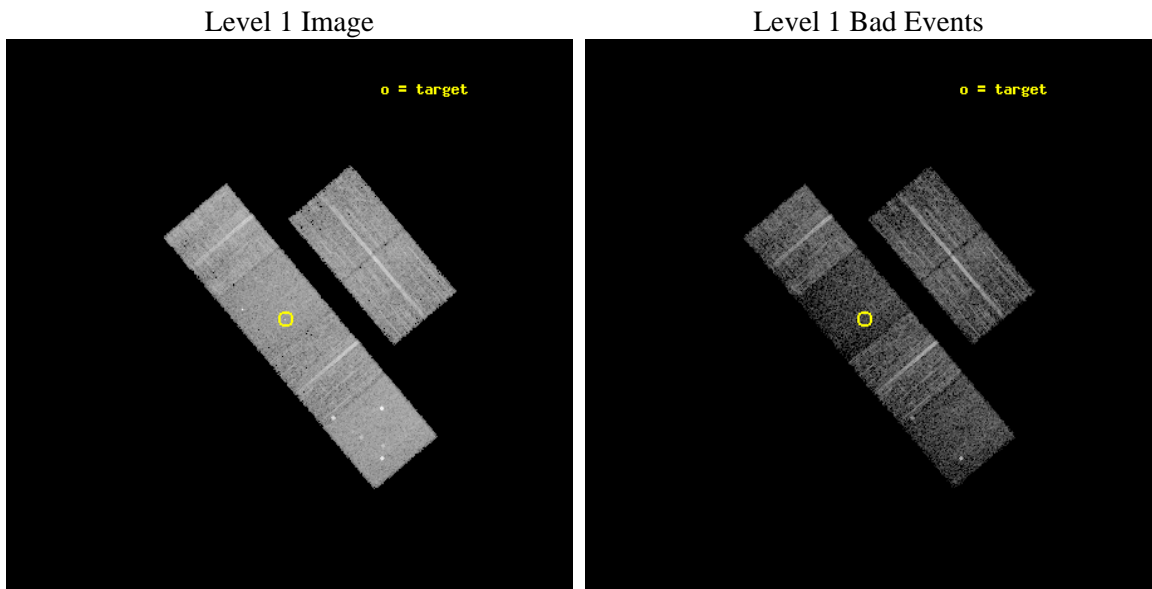
seq_num	700802	Sequence number
obs_id	4123	Observation id
title	WHAT KIND OF JETS DOES NATURE MAKE? X-RAY CHARACTERIZATION OF THE FIRST FLAT SPECTRUM SAMPLE	Proposal title
observer	Dr. Giovanni Fossati	Principal investigator
object	FIRST J0941+4121	Source name
dtcycle	0	
cycle	P	events from which exps? Prim/Second/Both
ra_targ	145.457083	Observer's specified target RA [deg]
dec_targ	41.351278	Observer's specified target Dec [deg]
ra_nom	145.44722170669	Nominal RA [deg]
dec_nom	41.345031692156	Nominal Dec [deg]
roll_nom	229.72942382508	Nominal Roll [deg]
revision	4	Processing version of data
ontime	7753.5999711156	Sum of GTIs [s]
livetime	7655.4192196239	Livetime [s]
ontime2	7753.5999711156	Sum of GTIs [s]
ontime3	7753.5999711156	Sum of GTIs [s]
ontime5	7753.5999711156	Sum of GTIs [s]
ontime6	7750.3589809239	Sum of GTIs [s]
ontime7	7753.5999711156	Sum of GTIs [s]
ontime8	7747.118140161	Sum of GTIs [s]
l2events	54218	Number of level 2 events



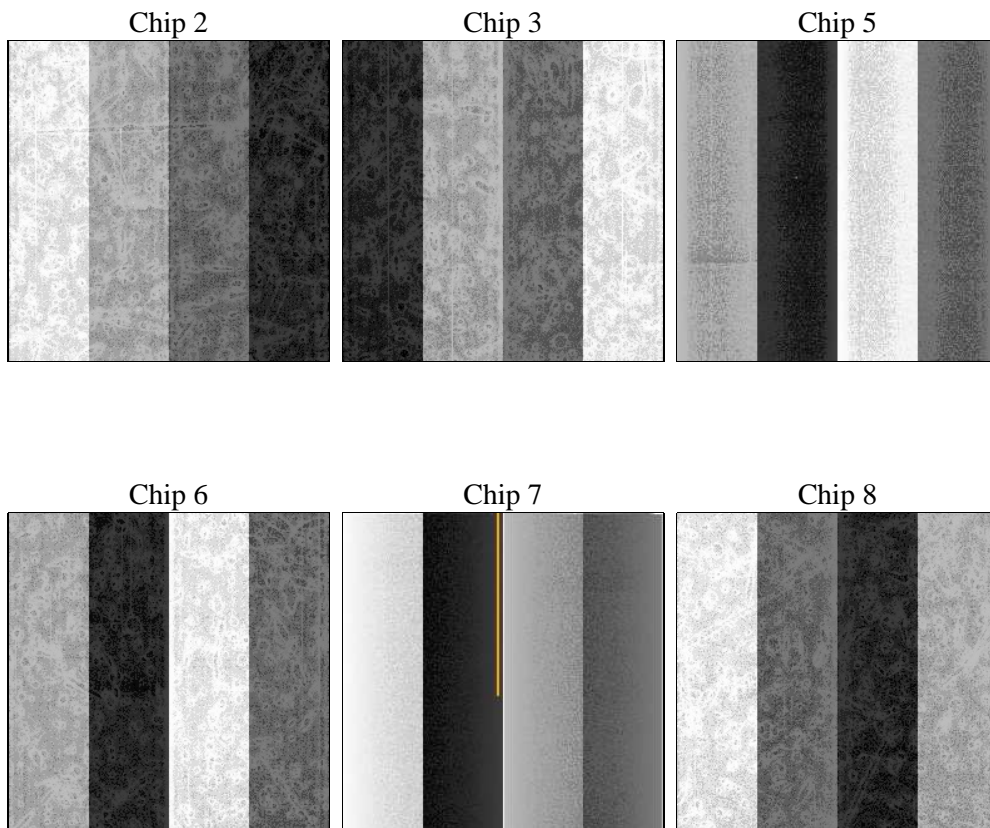
2 OBI

2.1 OBI

2.1.1 Images



2.1.2 Bias



2.1.3 Parameters

obi_num	0	Obi number	sched_exp_time	8000.000000	[s] Scheduled observation exposure time
ascdsver	8.4.5	Processing system revision	ontime	7753.5999711156	Sum of GTIs [s]
caldsver	4.5.2	 	ontime2	7753.5999711156	Sum of GTIs [s]
date	2012-10-24T20:41:22	Date and time of file creation	ontime3	7753.5999711156	Sum of GTIs [s]
revision	4	Processing version of data	ontime5	7753.5999711156	Sum of GTIs [s]
			ontime6	7750.3589809239	Sum of GTIs [s]
			ontime7	7753.5999711156	Sum of GTIs [s]
			ontime8	7747.118140161	Sum of GTIs [s]
			l1events	258460	Number of level 1 events

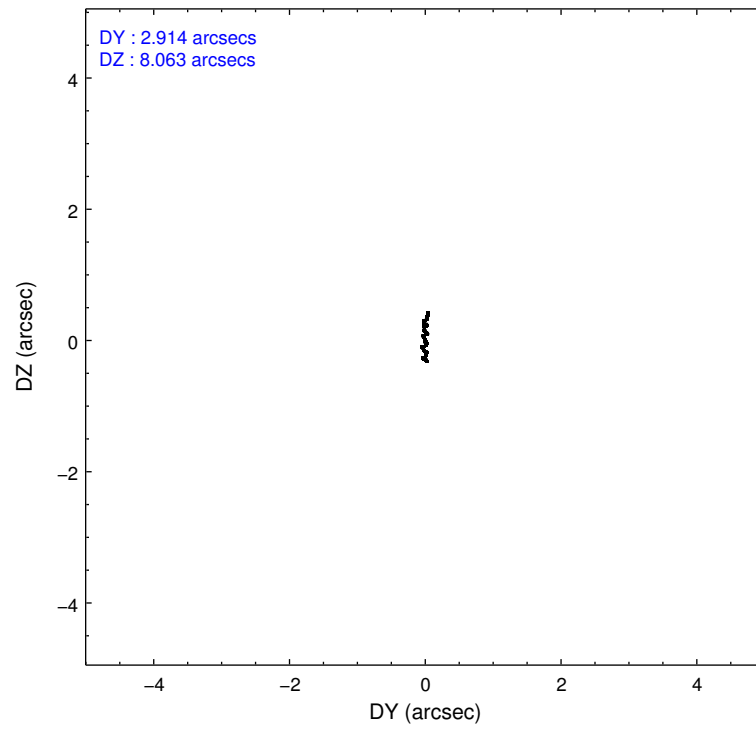
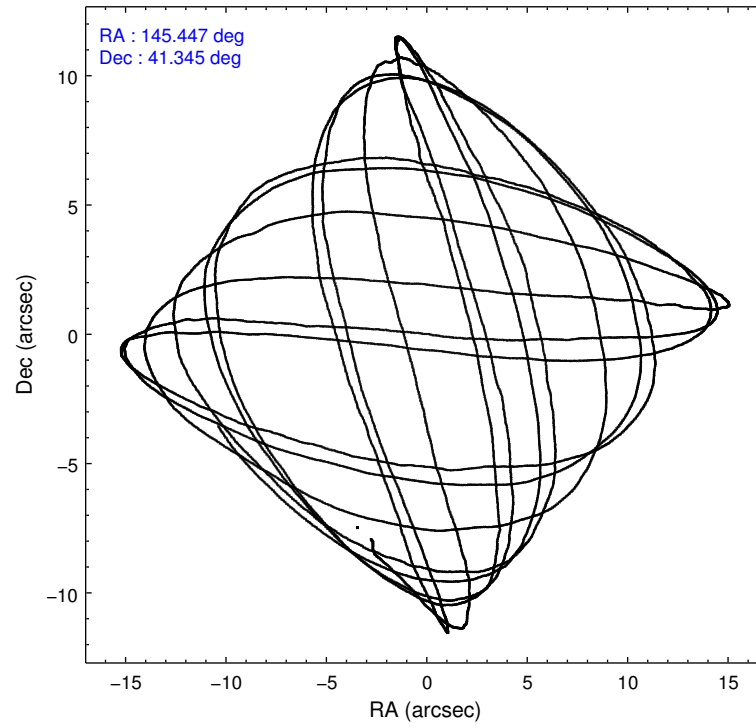
2.1.4 Events

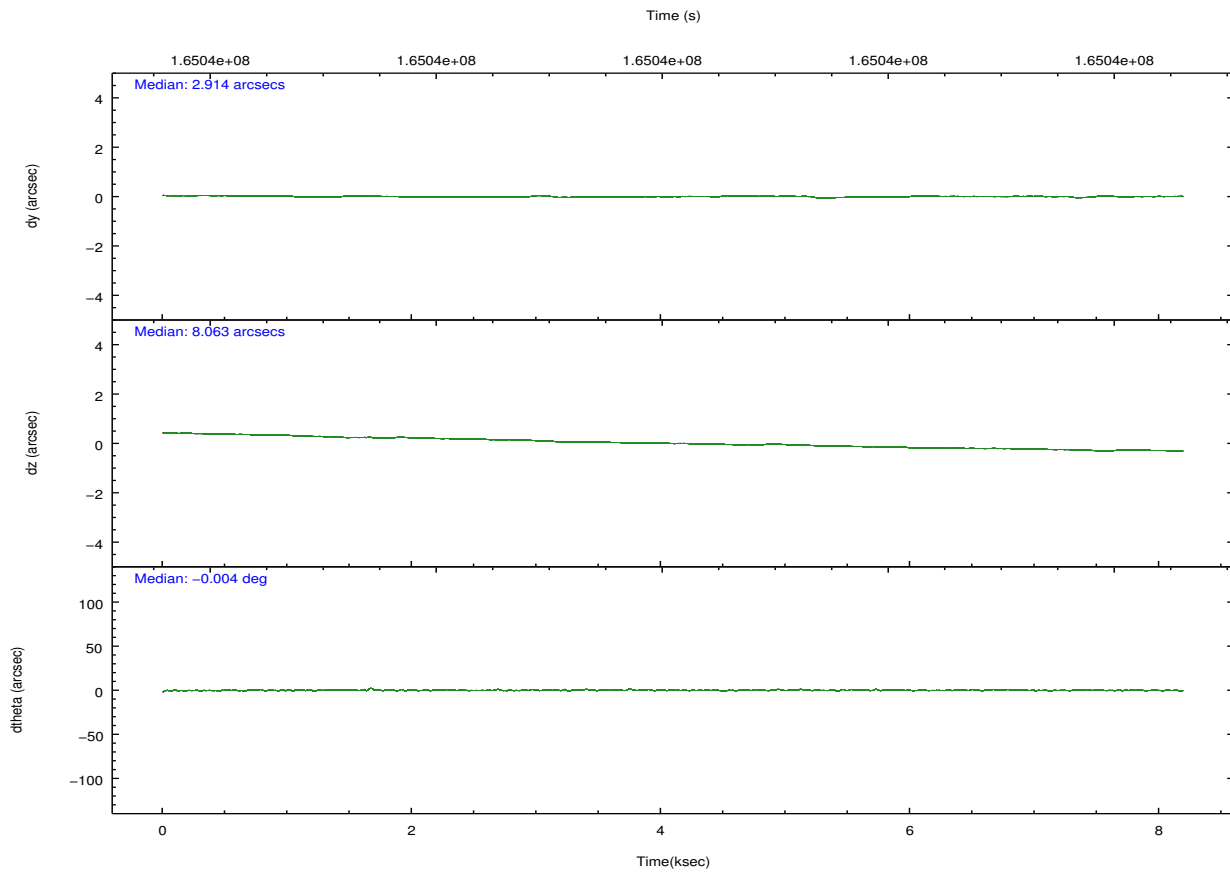
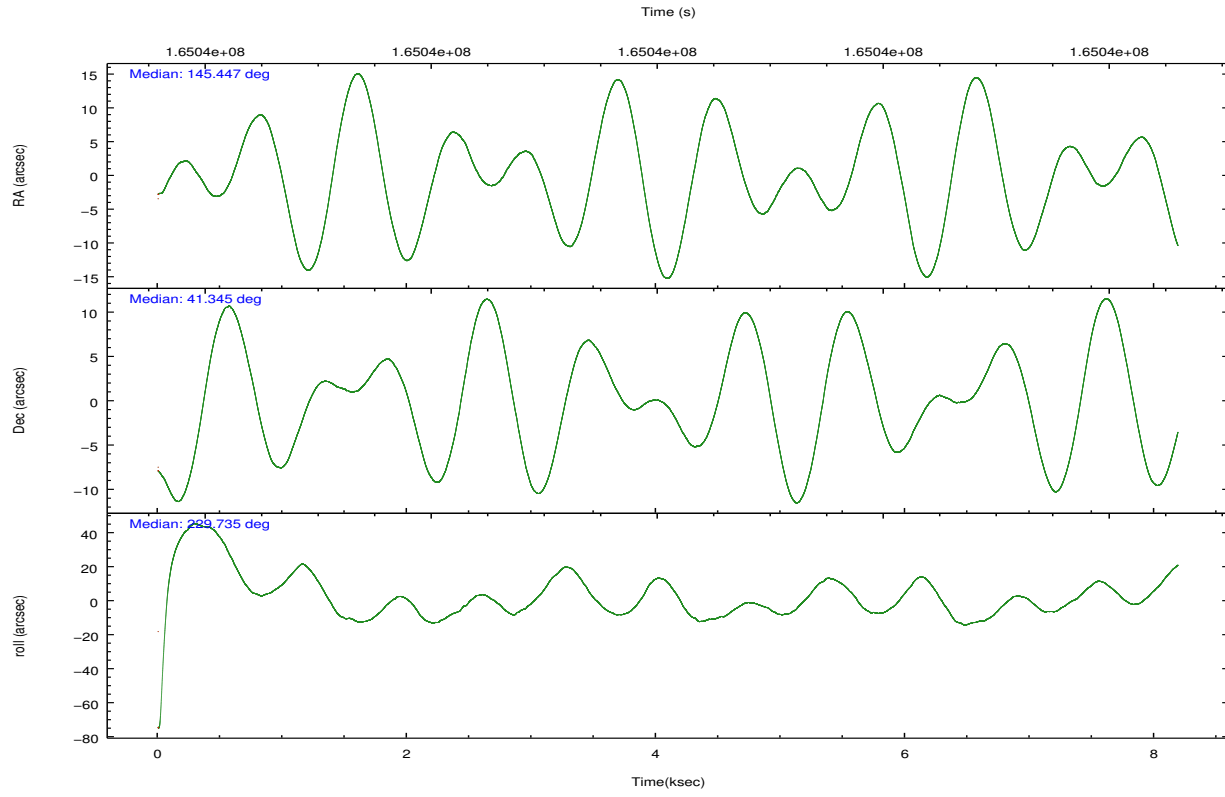
	ccd 2	ccd 3	ccd 5	ccd 6	ccd 7	ccd 8		ccd 2	ccd 3	ccd 5	ccd 6	ccd 7	ccd 8
level 1 events	41209	38787	49652	40278	37474	51060	grade 0 events	1440	1295	4017	1453	2053	2951
rejected events	37422	35249	22790	36309	18854	40435		3%	3%	8%	3%	5%	5%
rejected %	90%	90%	45%	90%	50%	79%	grade 1 events	26	18	114	18	36	40
								0%	0%	0%	0%	0%	0%
							grade 2 events	858	727	8034	870	3854	2370
								2%	1%	16%	2%	10%	4%
							grade 3 events	409	437	1208	459	1813	1155
								0%	1%	2%	1%	4%	2%
							grade 4 events	429	394	1134	453	1830	1169
								1%	1%	2%	1%	4%	2%
							grade 5 events	1075	1215	4018	1256	3997	1897
								2%	3%	8%	3%	10%	3%
							grade 6 events	651	687	12473	738	9079	2982
								1%	1%	25%	1%	24%	5%
							grade 7 events	36321	34014	18654	35031	14812	38496
								88%	87%	37%	86%	39%	75%

2.2 Compared Parameters

Parameter	Planned	Actual	Parameter	Planned	Actual
Instrument	ACIS	ACIS	Obspar format version number	7	7
Detector	ACIS-235678	ACIS-235678	Obspar file type	PREDICTED	ACTUAL
Grating	NONE	NONE	Obspar update status	NONE	UPDATED
Data mode	VFAINT	VFAINT	Number of optional ACIS chips dropped	0	0
Observation mode	POINTING	POINTING	On-chip summing requested	N	N
[deg] Pointing RA	145.453151	145.4472217066895	Subarray requested	NONE	NONE
[deg] Pointing Dec	41.371963	41.34503169215618	Alternating exposures requested	N	N
[deg] Pointing Roll	229.569075	229.7294238250809	[s] Primary exposure time	0.000000	3.2
[mm] SIM focus pos	-0.684267	-0.6828225247311905			
[mm] SIM defocus	0	0.001444936568705701			
[mm] SIM translation stage pos	-190.132523	-190.1425803651734			
[mm] SIM translation stage offset	0	0.01005778216563158			
[s] Observation start time (MET)	165036197.184000	165035585.64748			
Observation start date	2003-03-26T03:22:13	2003-03-26T03:13:05			
[s] Observation end time (MET)	165044197.184000	165044986.94787			
Observation end date	2003-03-26T05:35:33	2003-03-26T05:49:46			
Read mode	TIMED	TIMED			

2.3 Aspect



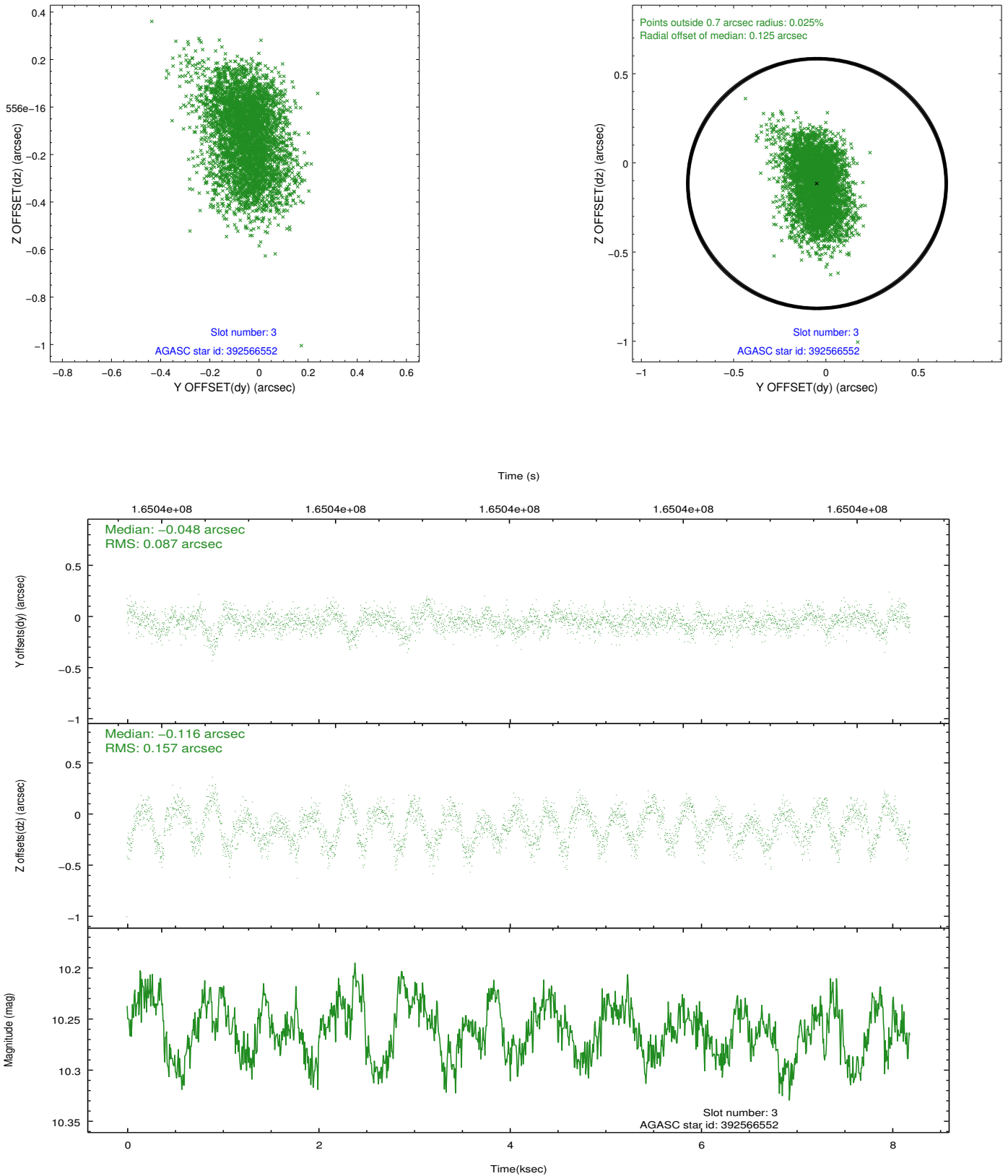


Slot Statistics

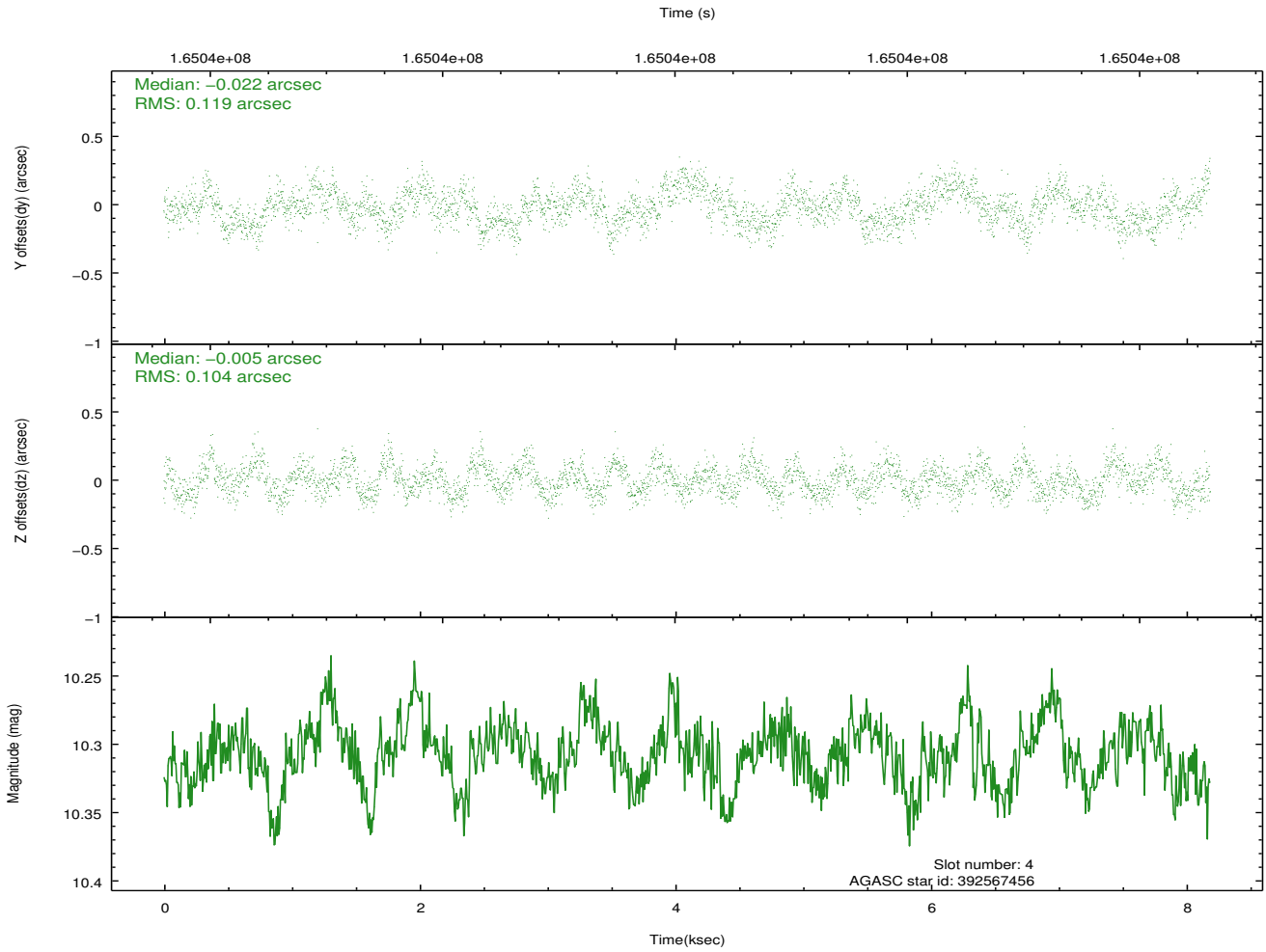
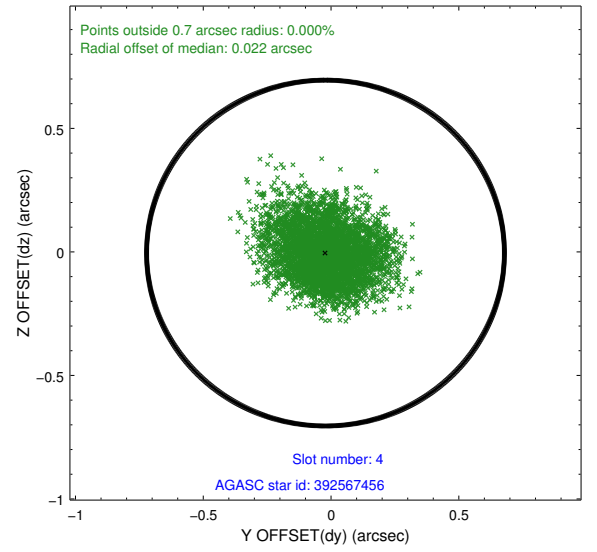
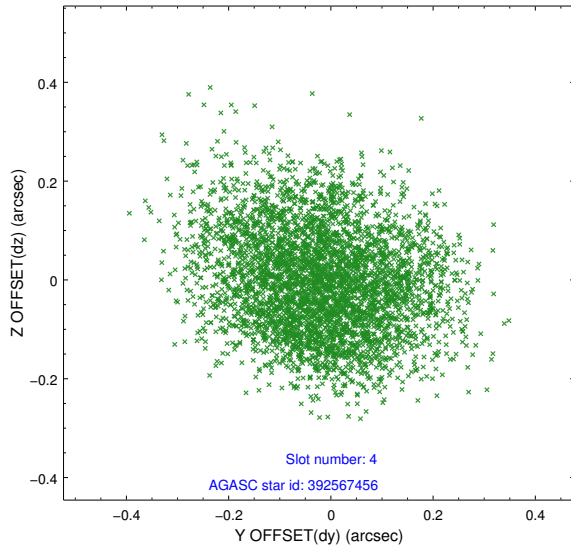
slot	status	id	mag	n_pts	med_dy	med_dz	dr1	dr2	ra	dec	mean_y	mean_z
0	FID	ACIS-S-2	7.11	1998	-0.015	-0.014	0.007	0.012	0.000000	0.000000	-755.57	-1729.24
1	FID	ACIS-S-4	7.20	1998	-0.001	0.011	0.006	0.011	0.000000	0.000000	2157.42	178.56
2	FID	ACIS-S-5	7.24	1997	-0.016	0.012	0.007	0.012	0.000000	0.000000	-1807.53	173.02
3	GUIDE	392566552	10.26	3960	-0.048	-0.116	0.192	0.311	145.392126	41.588069	-485.74	-629.85
4	GUIDE	392567456	10.31	3988	-0.022	-0.005	0.170	0.266	145.130250	40.848254	2004.20	551.90
5	GUIDE	392568792	8.97	3995	-0.083	0.015	0.078	0.130	146.111301	41.745566	-2174.86	469.32
6	GUIDE	392570952	9.36	3988	0.111	0.022	0.092	0.147	145.529603	40.934531	1063.67	1179.40
7	GUIDE	392571552	10.17	3976	0.045	0.088	0.165	0.273	145.548887	40.720773	1615.52	1719.21

2.4 Star Slots

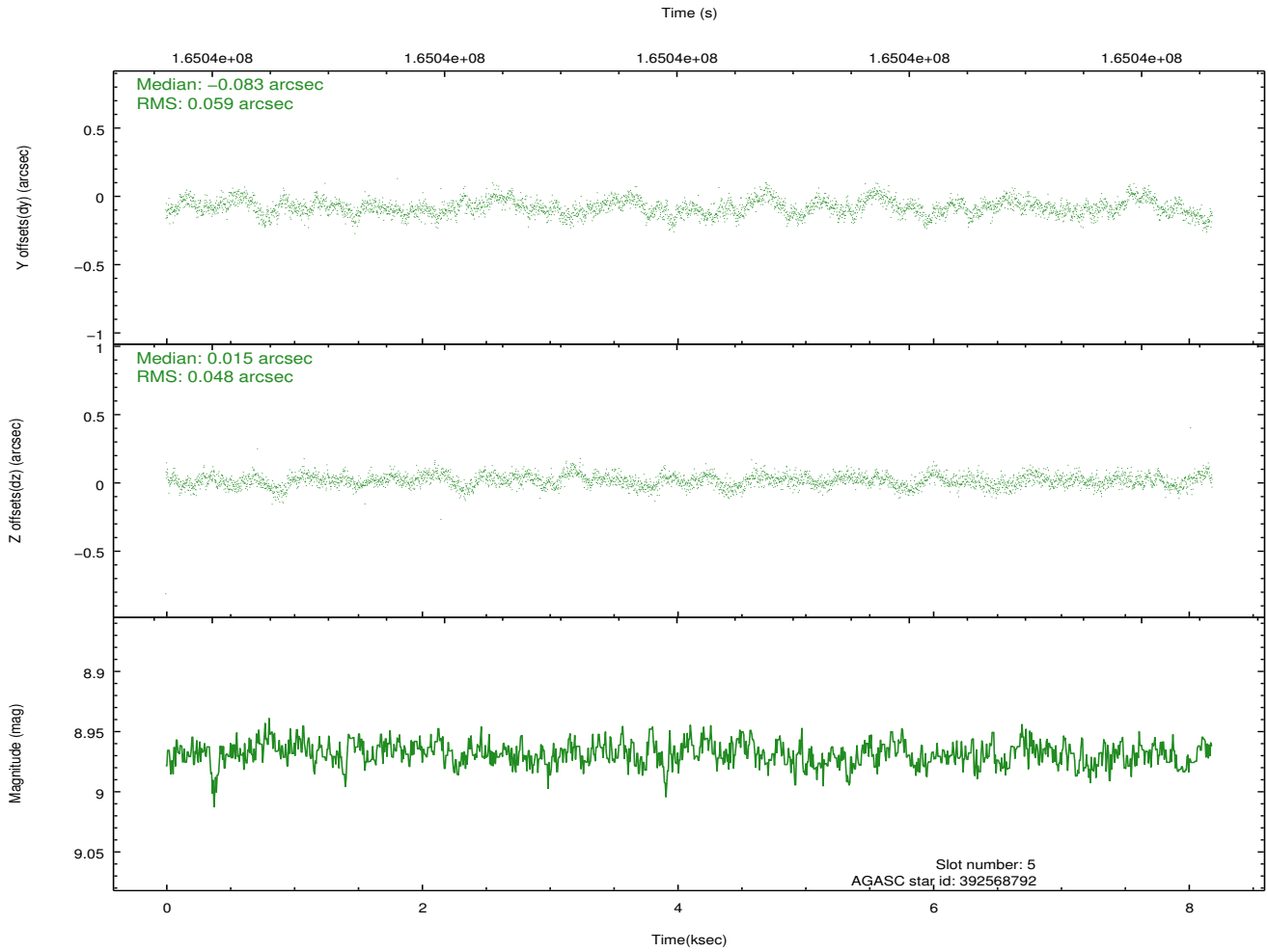
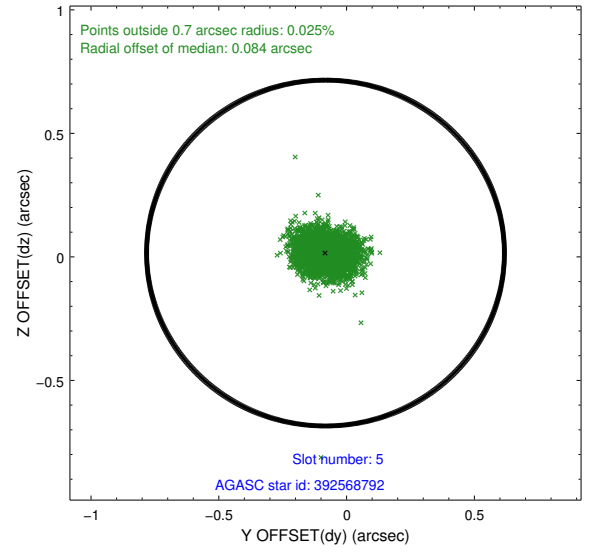
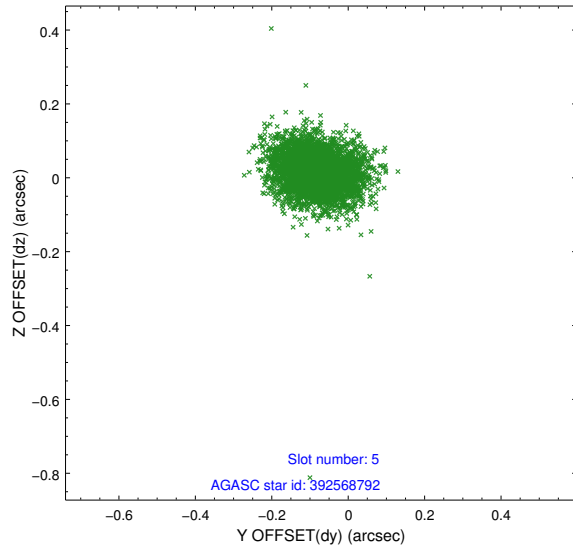
2.4.1 Slot 3



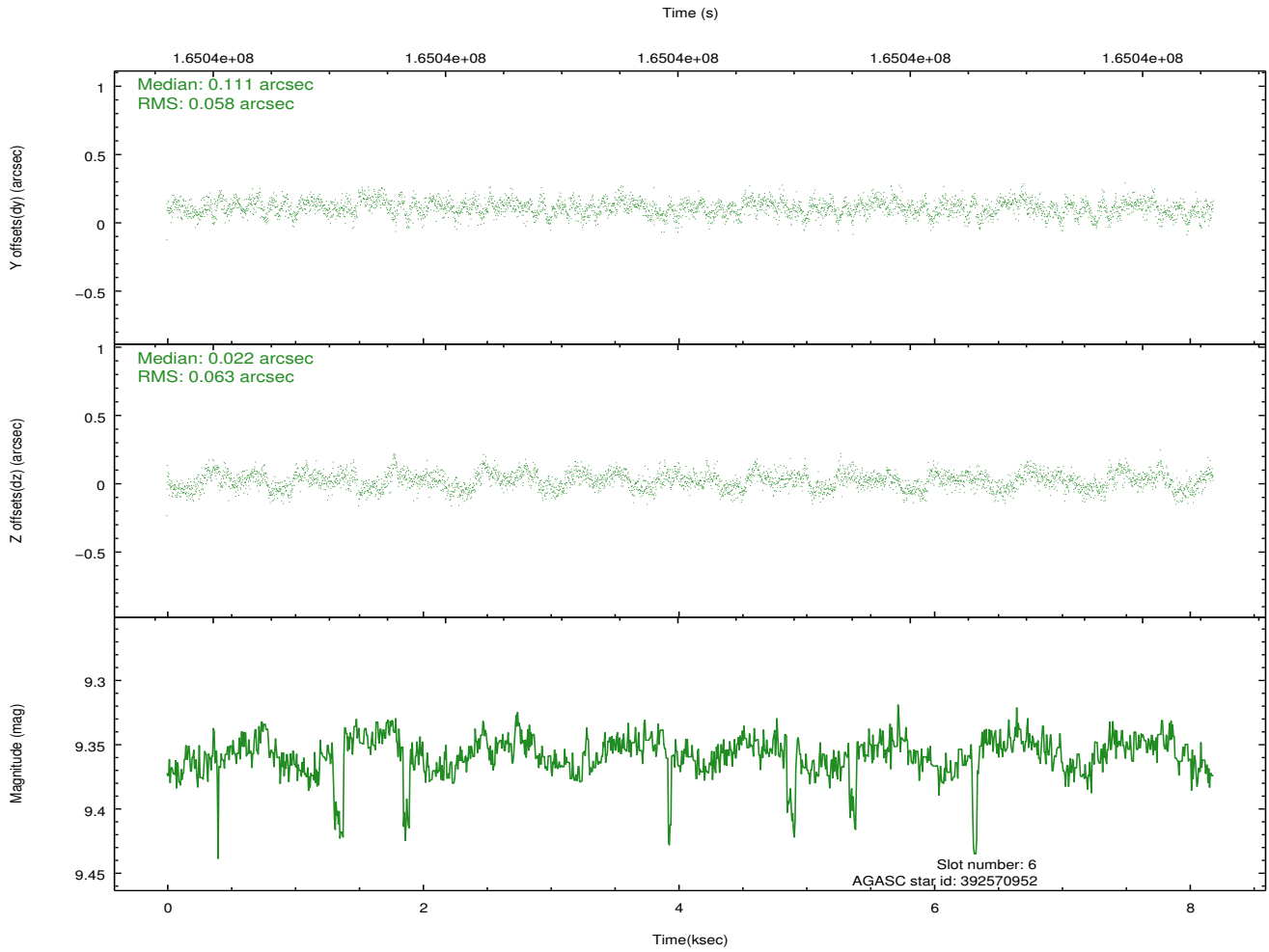
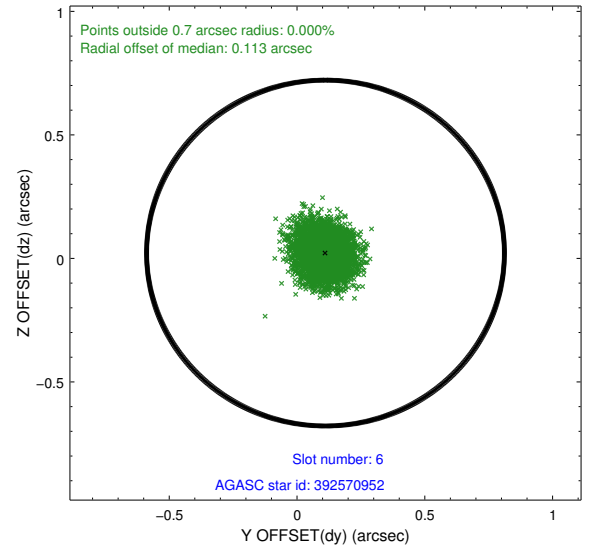
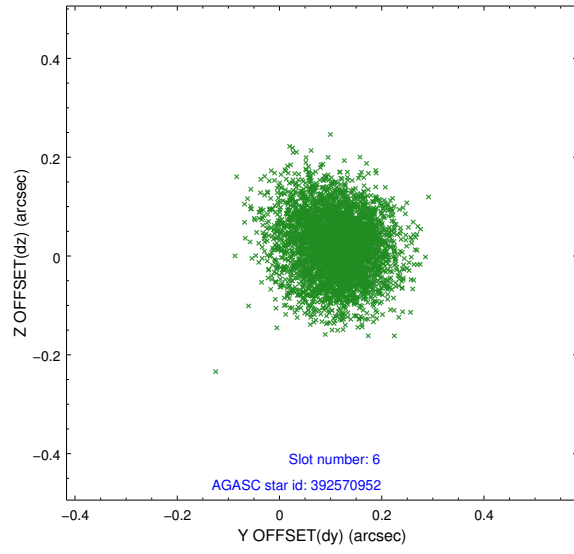
2.4.2 Slot 4



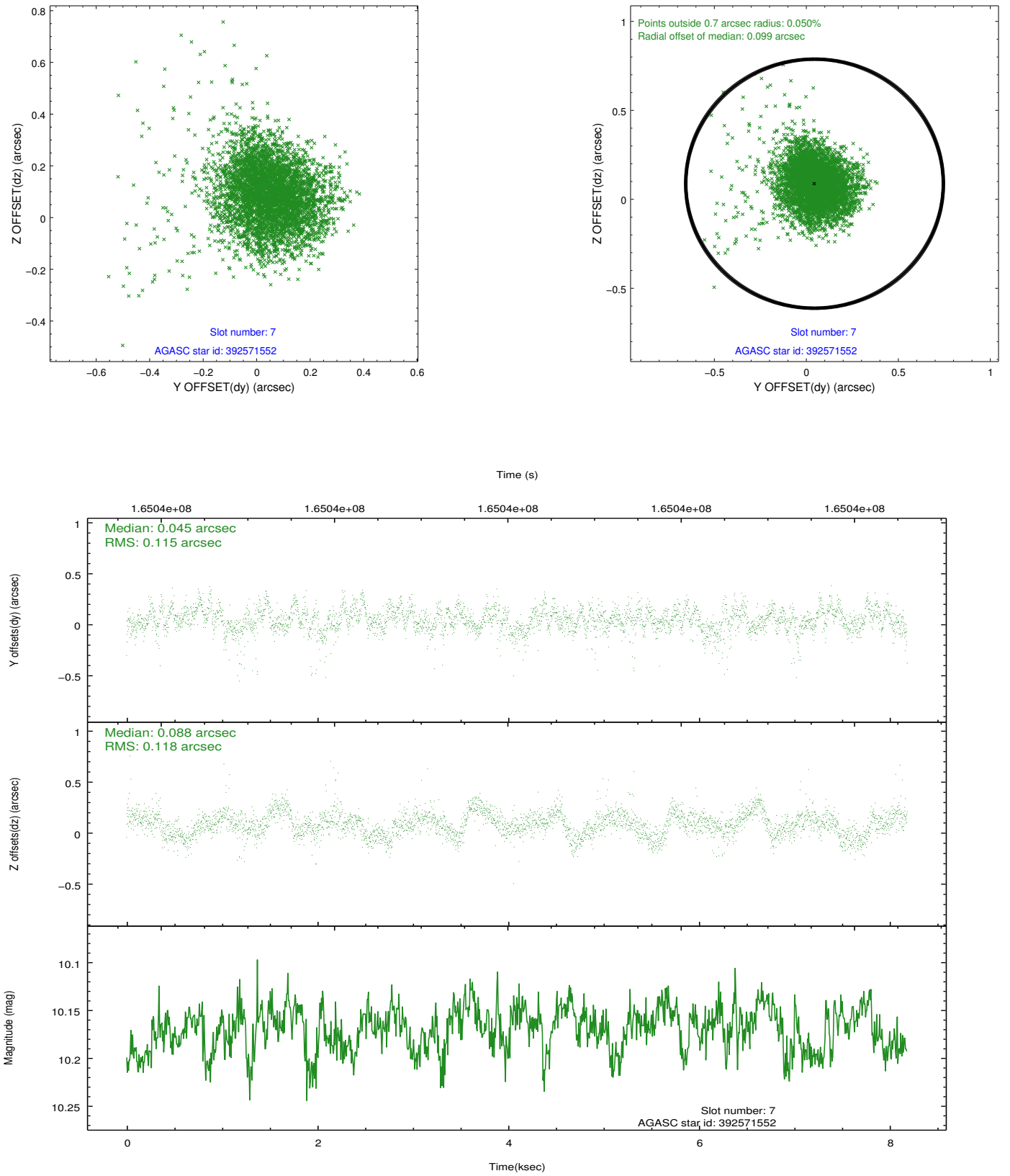
2.4.3 Slot 5



2.4.4 Slot 6

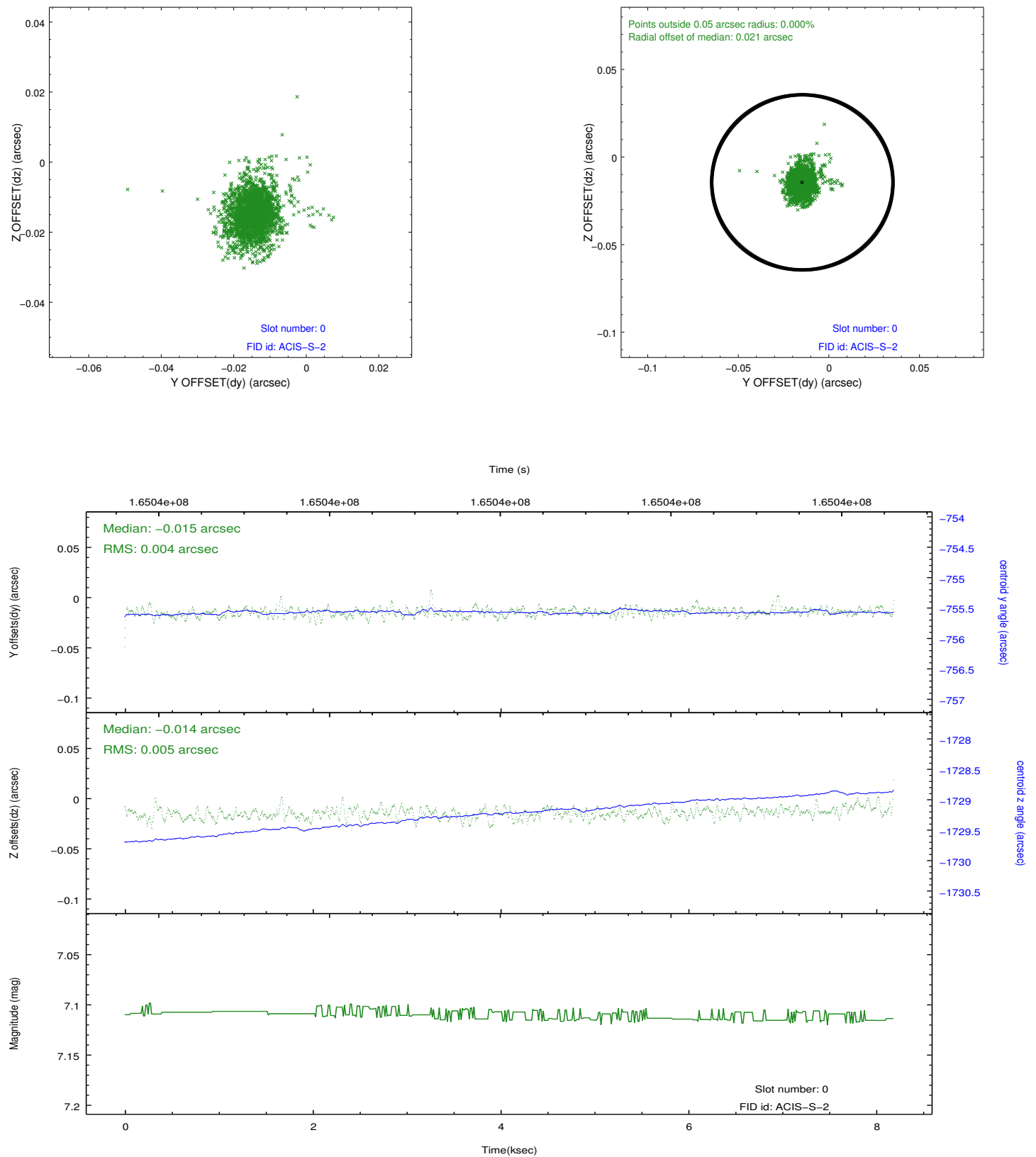


2.4.5 Slot 7

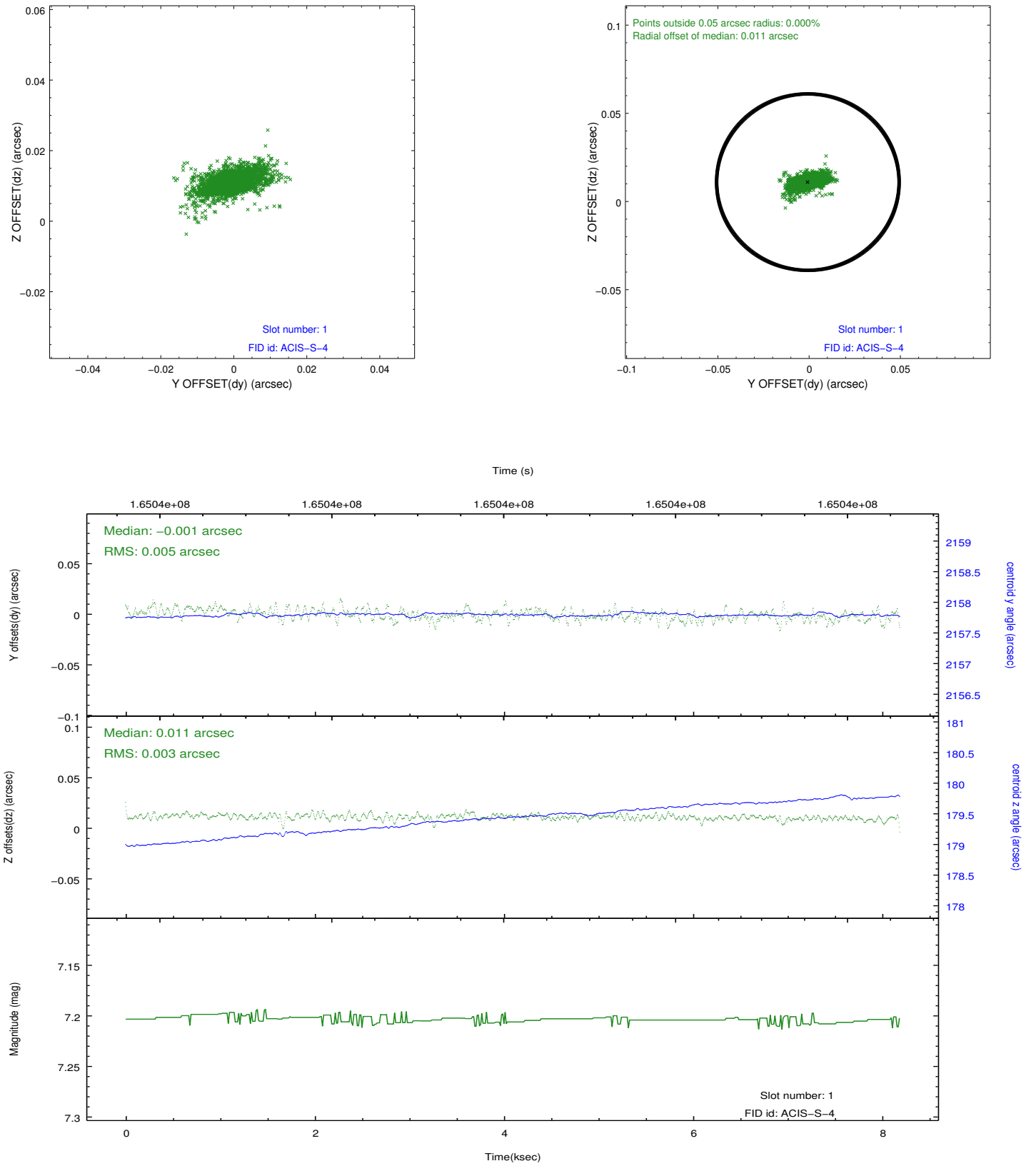


2.5 FID Slots

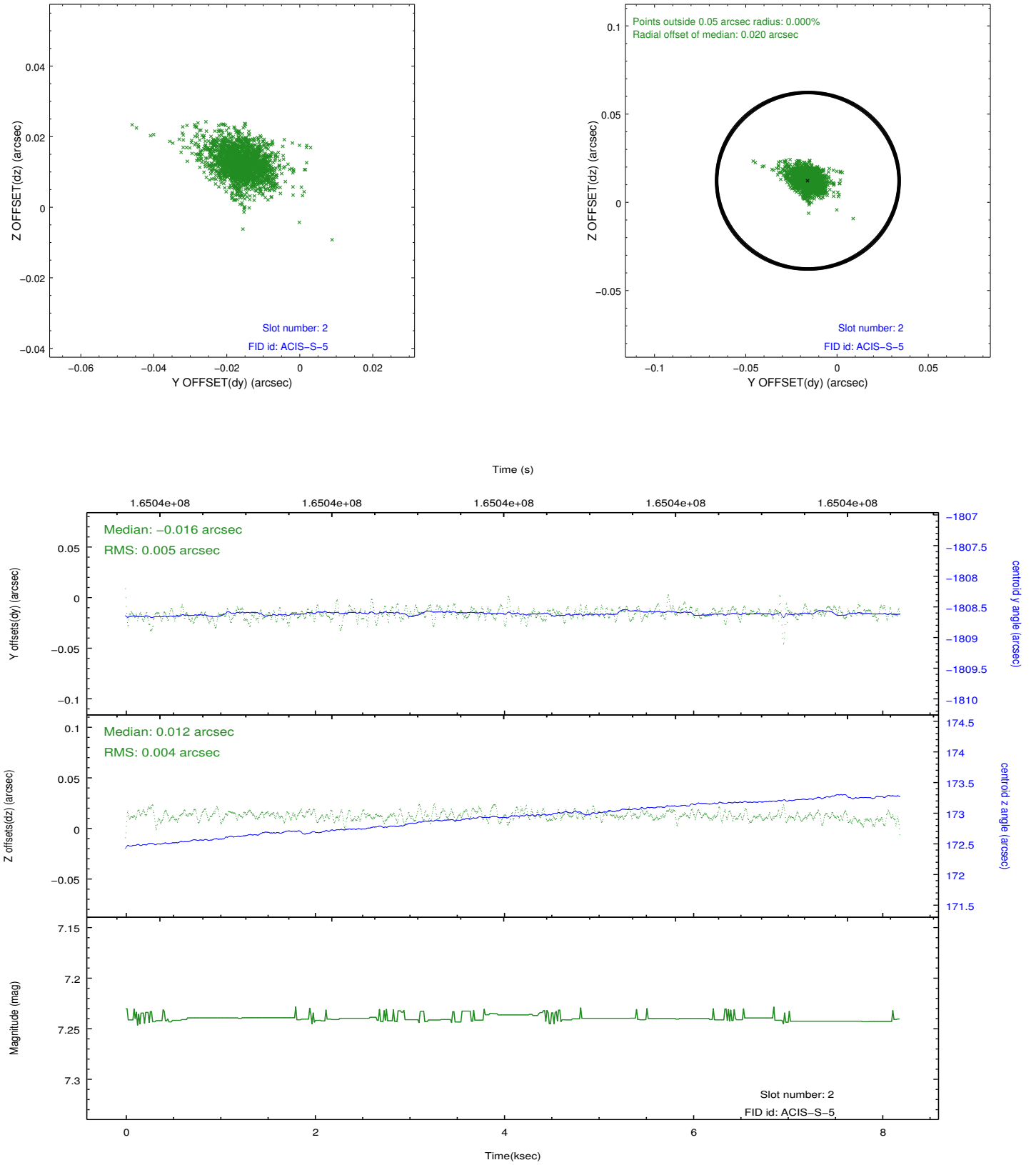
2.5.1 Slot 0



2.5.2 Slot 1



2.5.3 Slot 2



A Summary

A.1 Status

V&V Scientist	Jen Lauer
V&V Date (YYYY-MM-DD)	2012.11.08
V&V Edition	1
V&V Disposition and Status	OK
V&V Charge Time	7.757

A.2 Comments