

# V&V Reference Report

## L2 ASCDS Version : 8.4.5

Observation 4118 - L2 Version 3  
Chandra X-Ray Center

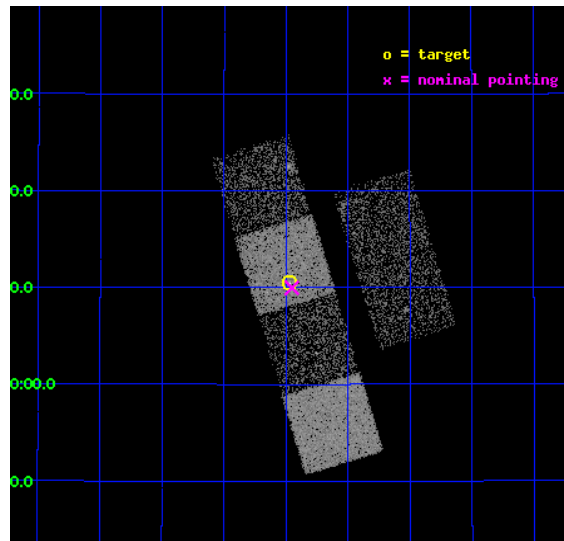
L2 Processing Date : Oct 24 2012

## Contents

<b>1</b>	<b>Front</b>	<b>2</b>
<b>2</b>	<b>OBI</b>	<b>3</b>
2.1	OBI . . . . .	3
2.1.1	Images . . . . .	3
2.1.2	Bias . . . . .	3
2.1.3	Parameters . . . . .	4
2.1.4	Events . . . . .	4
2.2	Compared Parameters . . . . .	5
2.3	Aspect . . . . .	6
2.4	Star Slots . . . . .	9
2.4.1	Slot 3 . . . . .	9
2.4.2	Slot 4 . . . . .	10
2.4.3	Slot 5 . . . . .	11
2.4.4	Slot 6 . . . . .	12
2.4.5	Slot 7 . . . . .	13
2.5	FID Slots . . . . .	14
2.5.1	Slot 0 . . . . .	14
2.5.2	Slot 1 . . . . .	15
2.5.3	Slot 2 . . . . .	16
<b>A</b>	<b>Summary</b>	<b>17</b>
A.1	Status . . . . .	17
A.2	Comments . . . . .	17

# 1 Front

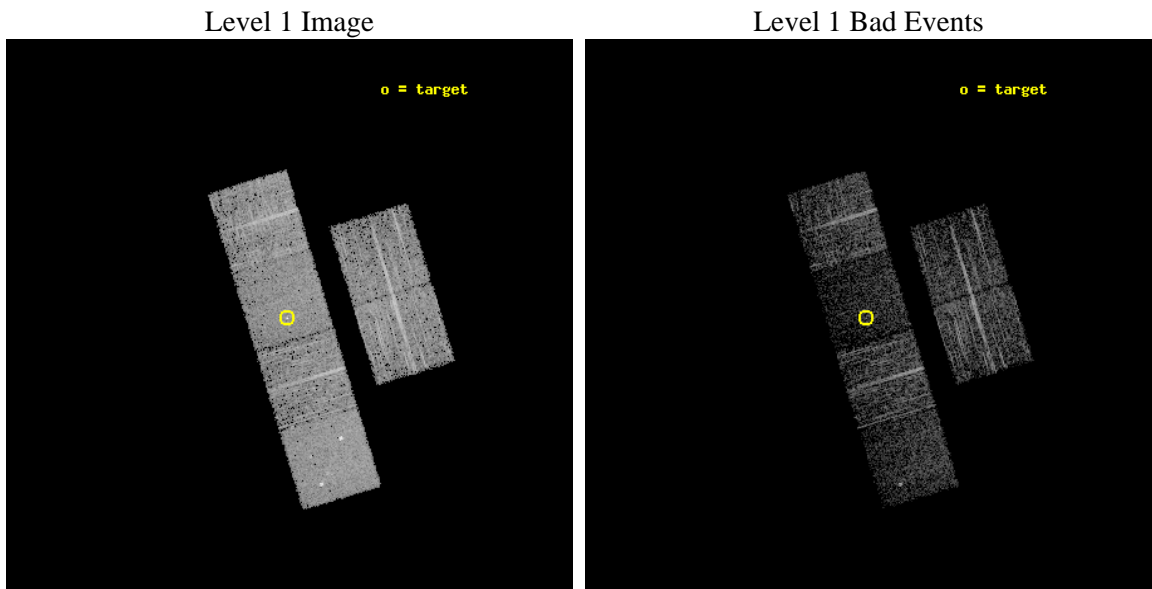
seq_num	700797	Sequence number
obs_id	4118	Observation id
title	WHAT KIND OF JETS DOES NATURE MAKE? X-RAY CHARACTERIZATION OF THE FIRST FLAT SPECTRUM SAMPLE	Proposal title
observer	Dr. Giovanni Fossati	Principal investigator
object	TXS 0756+303	Source name
dtcycle	0	&#160
cycle	P	events from which exps? Prim/Second/Both
ra_targ	119.867917	Observer's specified target RA [deg]
dec_targ	30.174722	Observer's specified target Dec [deg]
ra_nom	119.86298075182	Nominal RA [deg]
dec_nom	30.166211318093	Nominal Dec [deg]
roll_nom	253.10184637639	Nominal Roll [deg]
revision	3	Processing version of data
ontime	4463.9999833703	Sum of GTIs [s]
livetime	4407.4741276828	Livetime [s]
ontime2	4460.7589931786	Sum of GTIs [s]
ontime3	4463.9999833703	Sum of GTIs [s]
ontime5	4463.9999833703	Sum of GTIs [s]
ontime6	4463.9999833703	Sum of GTIs [s]
ontime7	4463.9999833703	Sum of GTIs [s]
ontime8	4463.9999833703	Sum of GTIs [s]
l2events	33429	Number of level 2 events



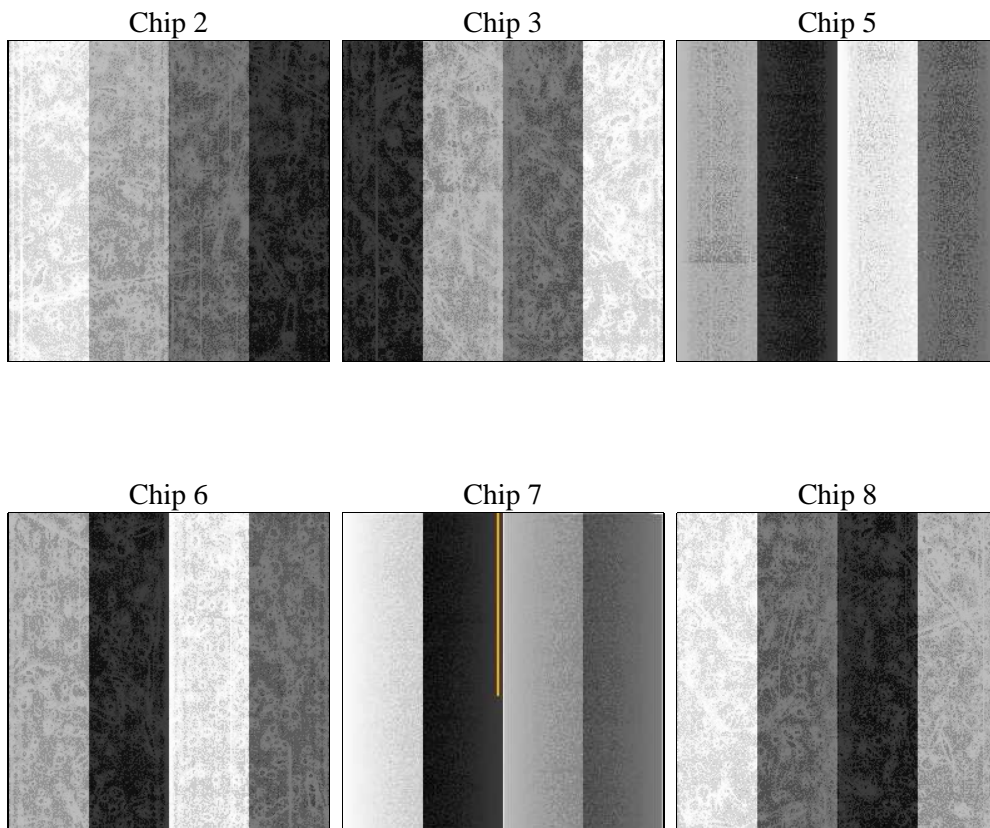
## 2 OBI

### 2.1 OBI

#### 2.1.1 Images



#### 2.1.2 Bias



### 2.1.3 Parameters

obi_num	0	Obi number	sched_exp_time	4500.000000	[s] Scheduled observation exposure time
ascdsver	8.4.5	Processing system revision	ontime	4463.9999833703	Sum of GTIs [s]
caldbver	4.5.2	&#160	ontime2	4460.7589931786	Sum of GTIs [s]
date	2012-10-24T18:23:34	Date and time of file creation	ontime3	4463.9999833703	Sum of GTIs [s]
revision	3	Processing version of data	ontime5	4463.9999833703	Sum of GTIs [s]
			ontime6	4463.9999833703	Sum of GTIs [s]
			ontime7	4463.9999833703	Sum of GTIs [s]
			ontime8	4463.9999833703	Sum of GTIs [s]
			l1events	147414	Number of level 1 events

### 2.1.4 Events

	ccd 2	ccd 3	ccd 5	ccd 6	ccd 7	ccd 8
level 1 events	25468	21048	28745	22696	22225	27232
rejected events	23237	19013	12847	20353	10480	21173
rejected %	91%	90%	44%	89%	47%	77%

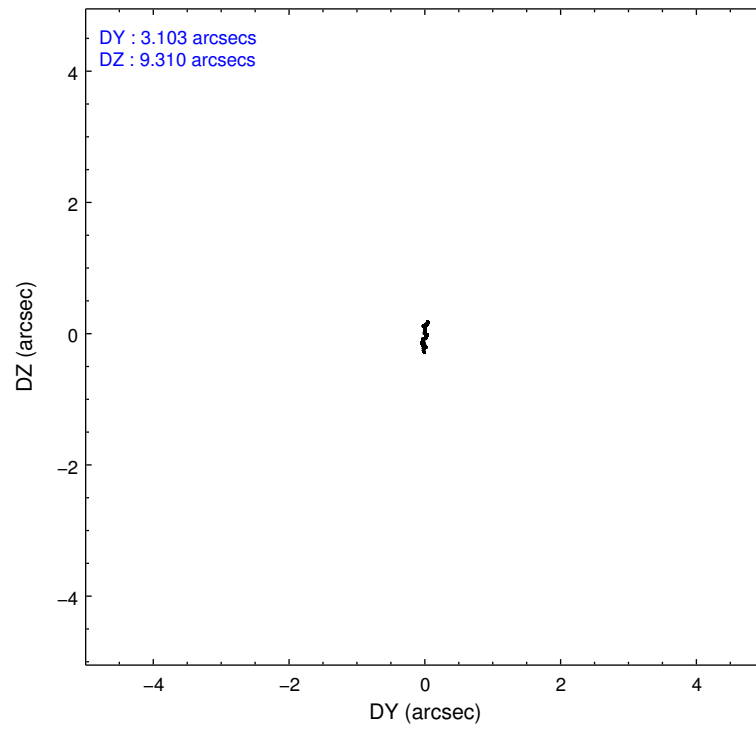
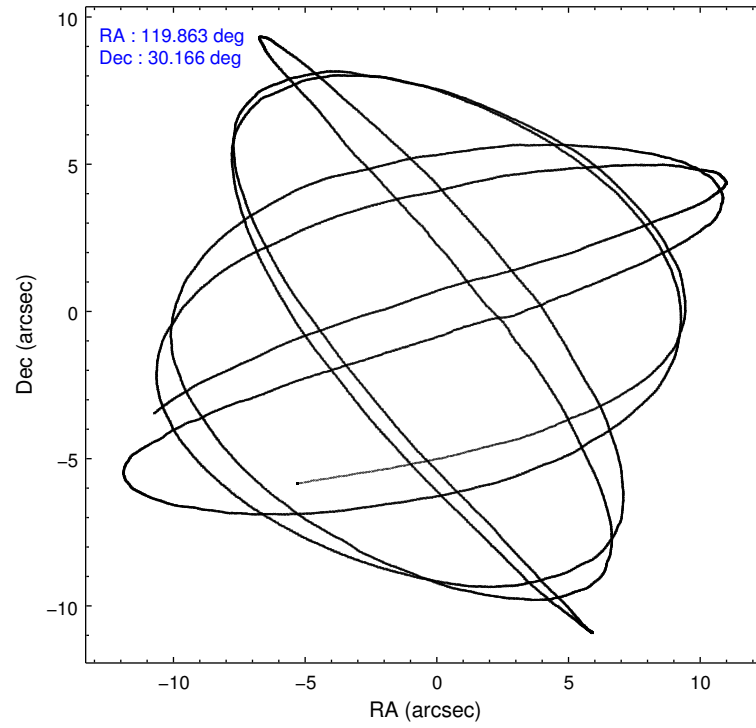
	ccd 2	ccd 3	ccd 5	ccd 6	ccd 7	ccd 8
grade 0 events	870	800	2092	882	1276	1830
	3%	3%	7%	3%	5%	6%
grade 1 events	10	13	25	11	24	17
	0%	0%	0%	0%	0%	0%
grade 2 events	508	409	4840	496	2409	1384
	1%	1%	16%	2%	10%	5%
grade 3 events	252	246	740	260	1145	676
	0%	1%	2%	1%	5%	2%
grade 4 events	259	221	734	258	1106	605
	1%	1%	2%	1%	4%	2%
grade 5 events	609	680	2278	736	2305	1092
	2%	3%	7%	3%	10%	4%
grade 6 events	344	361	7509	448	5816	1567
	1%	1%	26%	1%	26%	5%
grade 7 events	22616	18318	10527	19605	8144	20061
	88%	87%	36%	86%	36%	73%

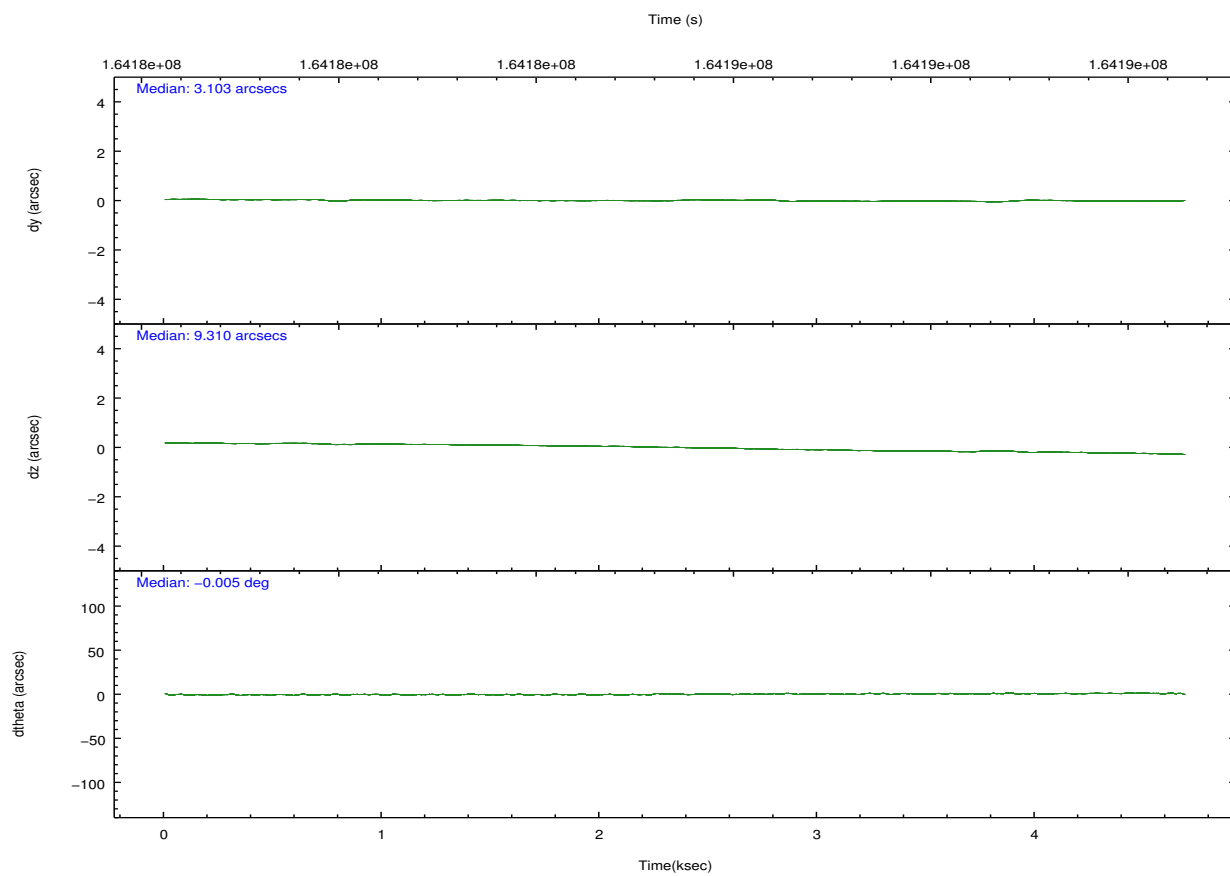
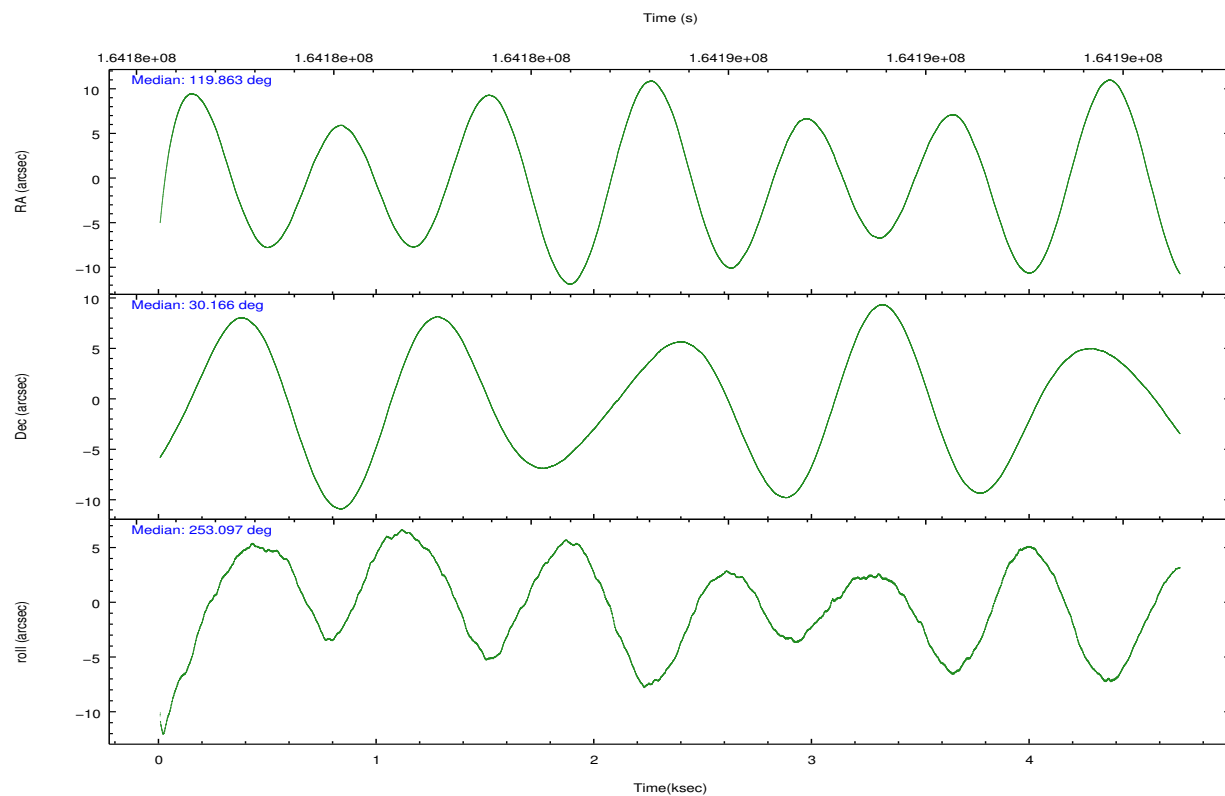


## 2.2 Compared Parameters

Parameter	Planned	Actual	Parameter	Planned	Actual
Instrument	ACIS	ACIS	Obspar format version number	7	7
Detector	ACIS-235678	ACIS-235678	Obspar file type	PREDICTED	ACTUAL
Grating	NONE	NONE	Obspar update status	NONE	UPDATED
Data mode	VFAINT	VFAINT	Number of optional ACIS chips dropped	0	0
Observation mode	POINTING	POINTING	On-chip summing requested	N	N
[deg] Pointing RA	119.855280	119.8629807518192	Subarray requested	NONE	NONE
[deg] Pointing Dec	30.192539	30.16621131809332	Alternating exposures requested	N	N
[deg] Pointing Roll	252.949108	253.1018463763934	[s] Primary exposure time	0.000000	3.2
[mm] SIM focus pos	-0.684267	-0.6828225247311905			
[mm] SIM defocus	0	0.001444936568705701			
[mm] SIM translation stage pos	-190.132523	-190.1400660498719			
[mm] SIM translation stage offset	0	0.00754346686406393			
[s] Observation start time (MET)	164183553.184000	164182590.34903			
Observation start date	2003-03-16T06:31:29	2003-03-16T06:16:30			
[s] Observation end time (MET)	164188053.184000	164188682.43679			
Observation end date	2003-03-16T07:46:29	2003-03-16T07:58:02			
Read mode	TIMED	TIMED			

## 2.3 Aspect



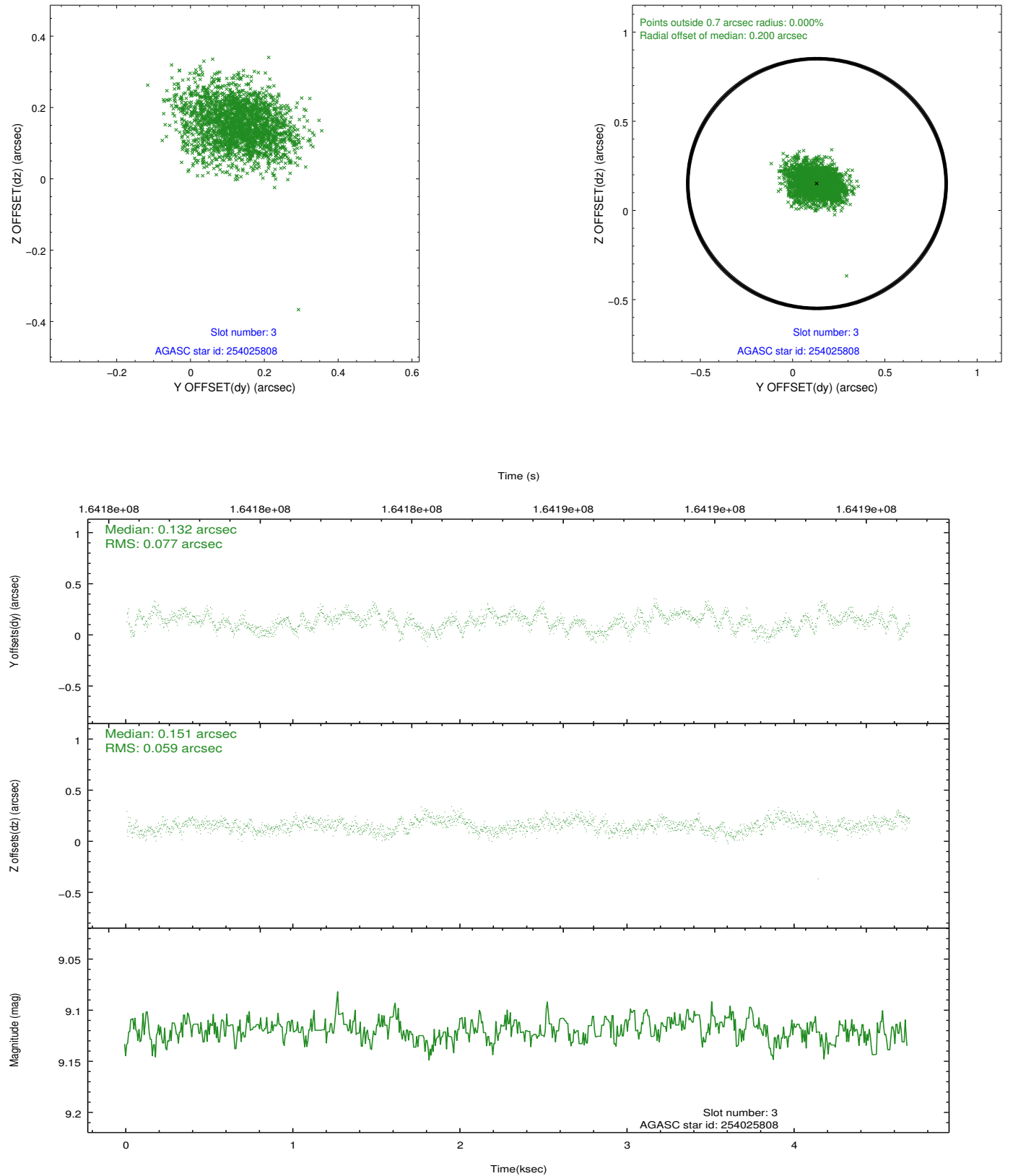


### Slot Statistics

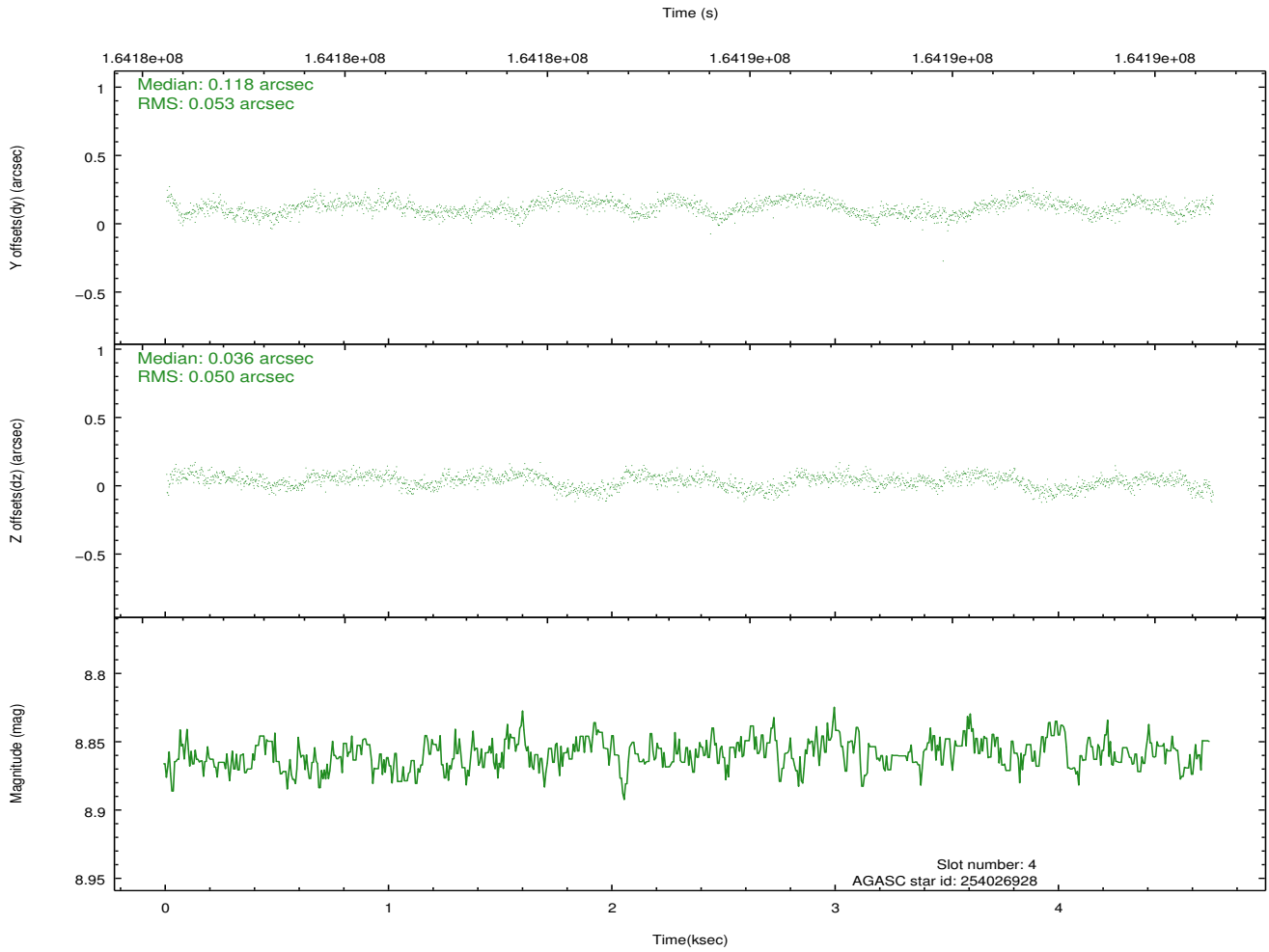
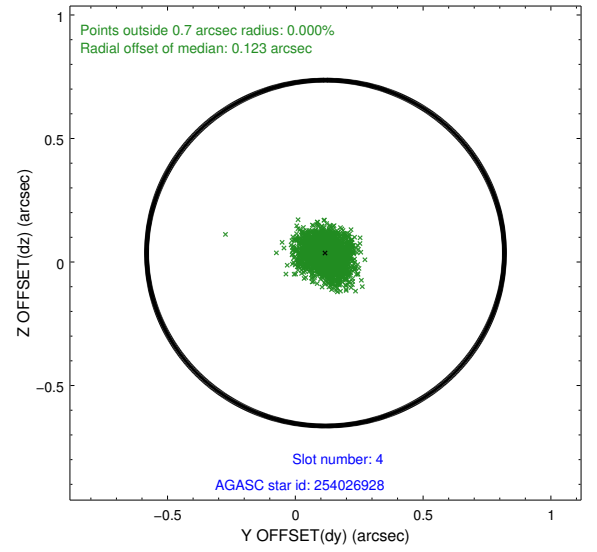
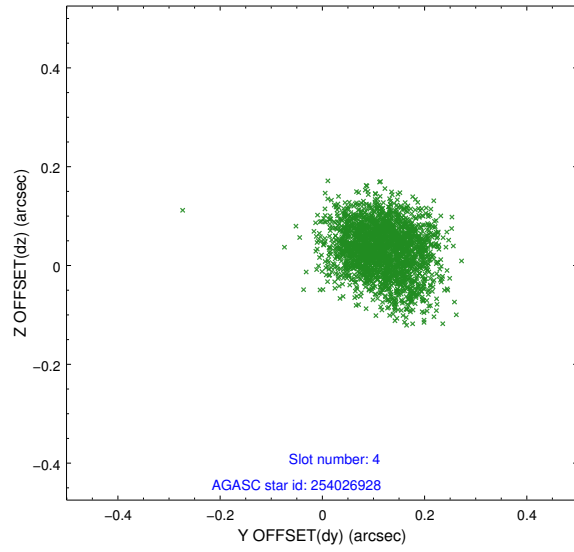
slot	status	id	mag	n_pts	med_dy	med_dz	dr1	dr2	ra	dec	mean_y	mean_z
0	FID	ACIS-S-2	7.11	1143	-0.039	-0.017	0.007	0.011	0.000000	0.000000	-755.76	-1730.55
1	FID	ACIS-S-4	7.20	1143	0.025	0.023	0.006	0.012	0.000000	0.000000	2156.96	176.67
2	FID	ACIS-S-5	7.24	1143	-0.017	0.003	0.007	0.011	0.000000	0.000000	-1806.92	171.75
3	GUIDE	254025808	9.12	2285	0.132	0.151	0.103	0.168	120.362886	29.597303	1580.18	2146.71
4	GUIDE	254026928	8.86	2286	0.118	0.036	0.077	0.124	119.623638	29.961658	1007.37	-446.13
5	GUIDE	323485760	8.44	2287	-0.093	0.029	0.164	0.231	119.830490	30.449362	-860.27	-344.87
6	GUIDE	323490400	8.80	2285	-0.139	0.004	0.079	0.121	119.791577	30.720106	-1757.73	-745.69
7	GUIDE	323491200	9.22	2283	-0.003	-0.223	0.112	0.171	119.482346	30.465852	-603.10	-1395.99

## 2.4 Star Slots

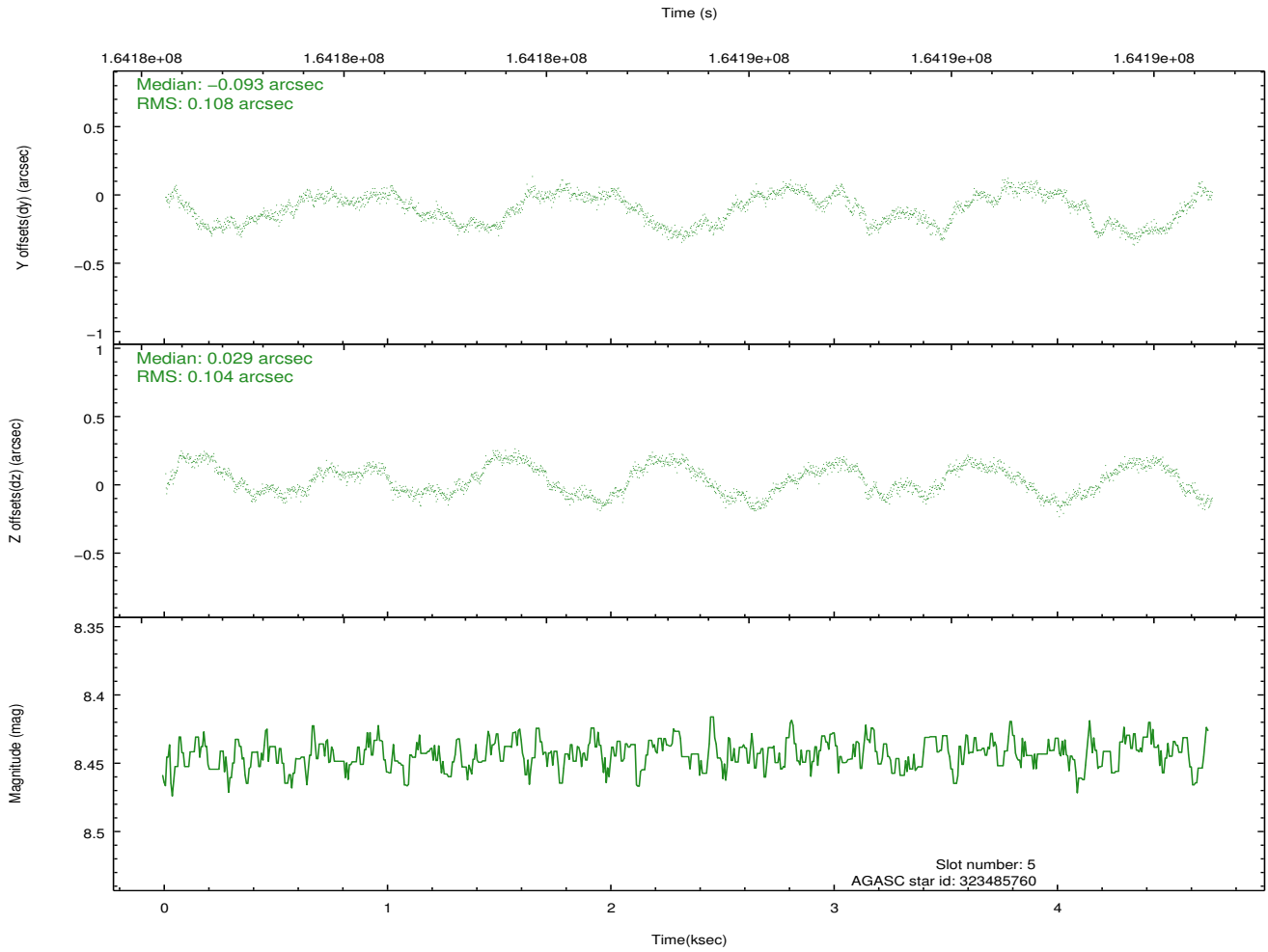
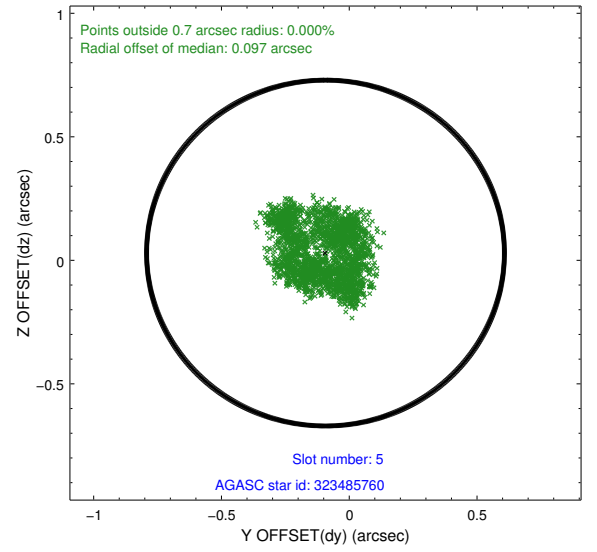
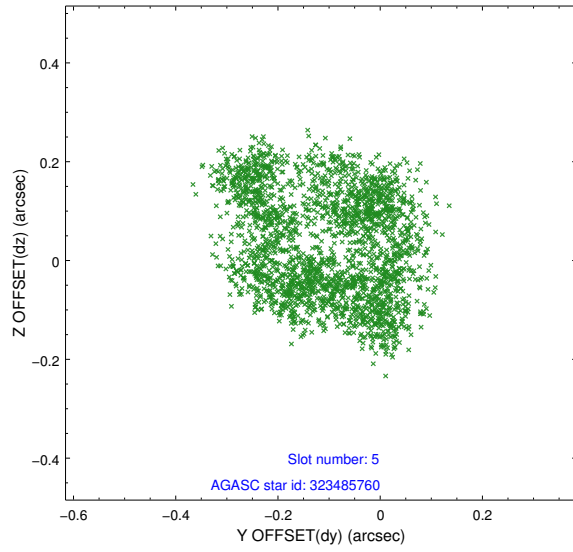
### 2.4.1 Slot 3



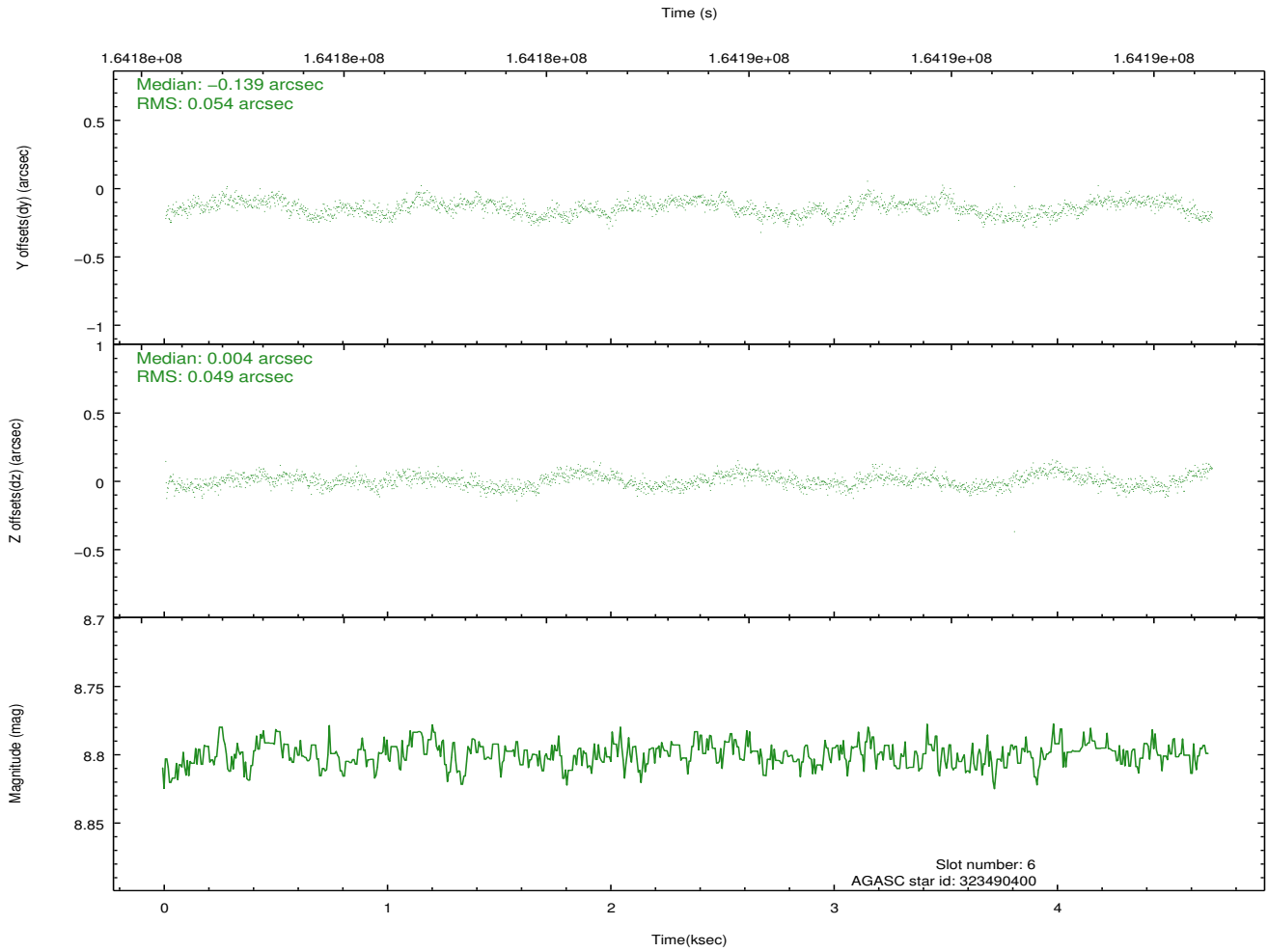
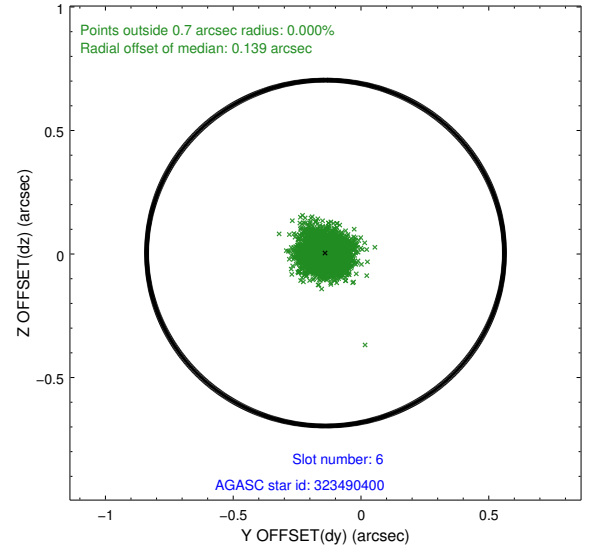
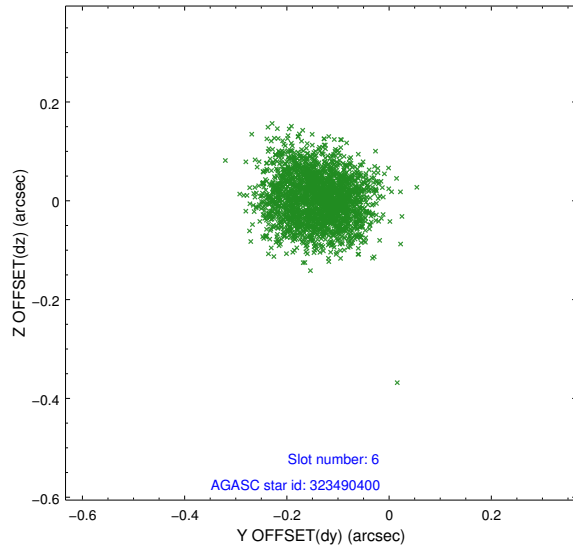
## 2.4.2 Slot 4



### 2.4.3 Slot 5

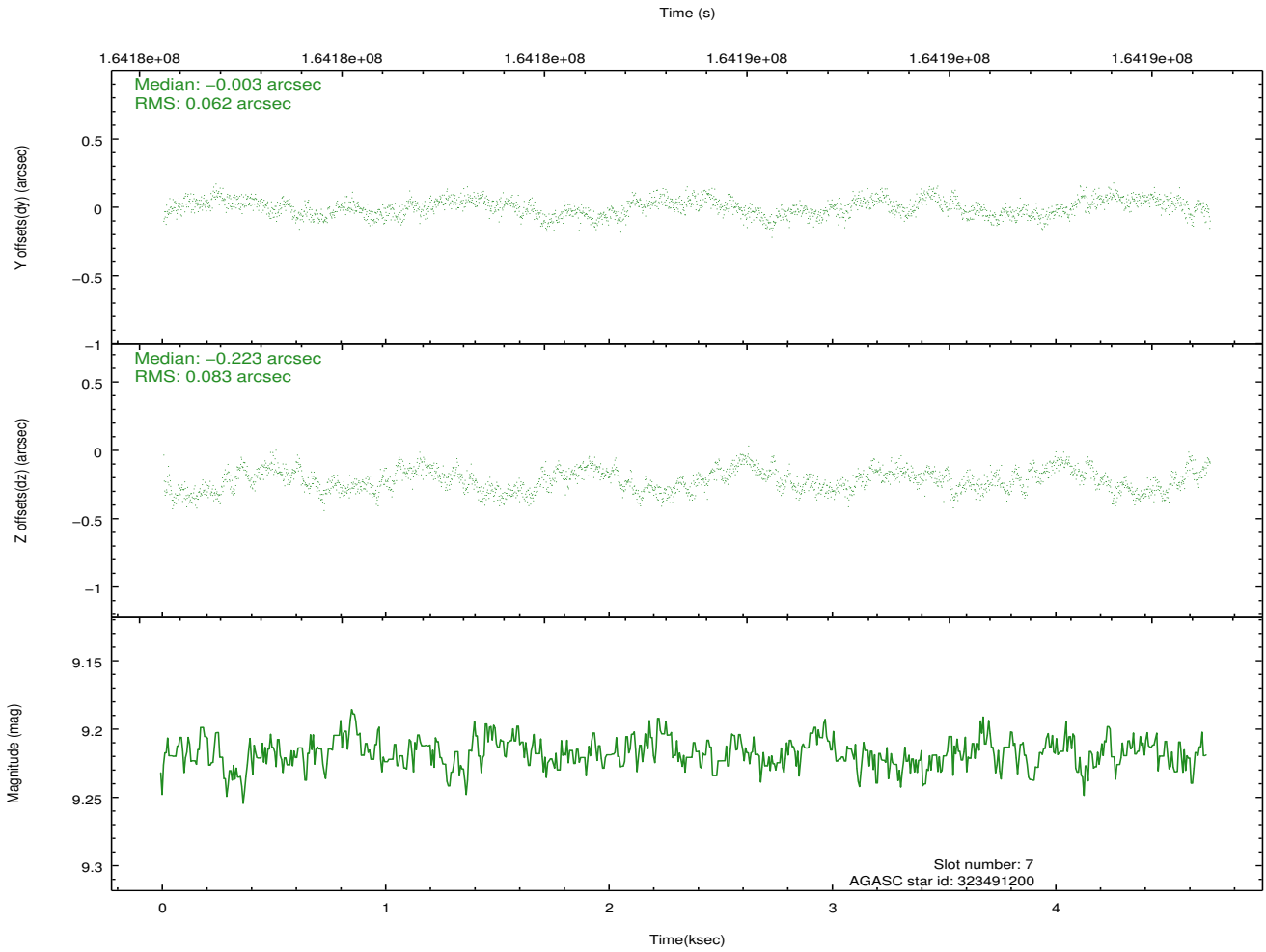
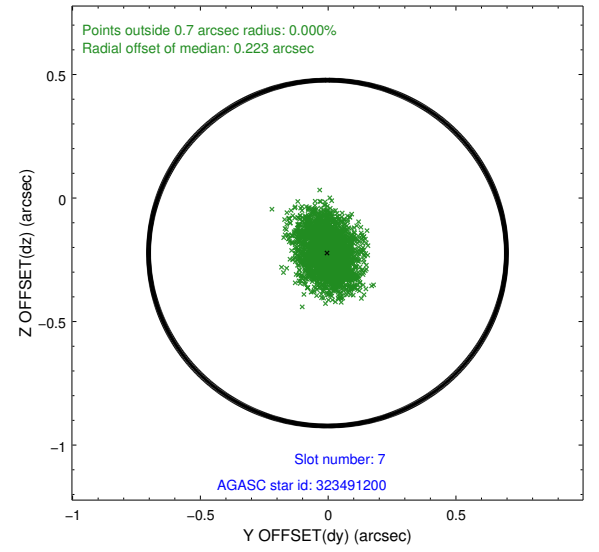
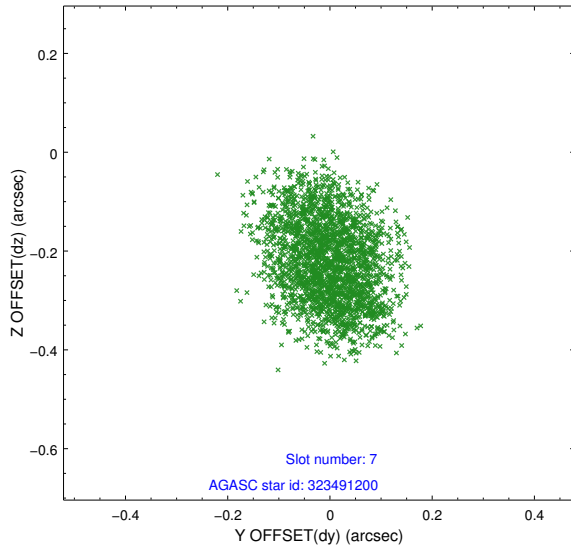


## 2.4.4 Slot 6



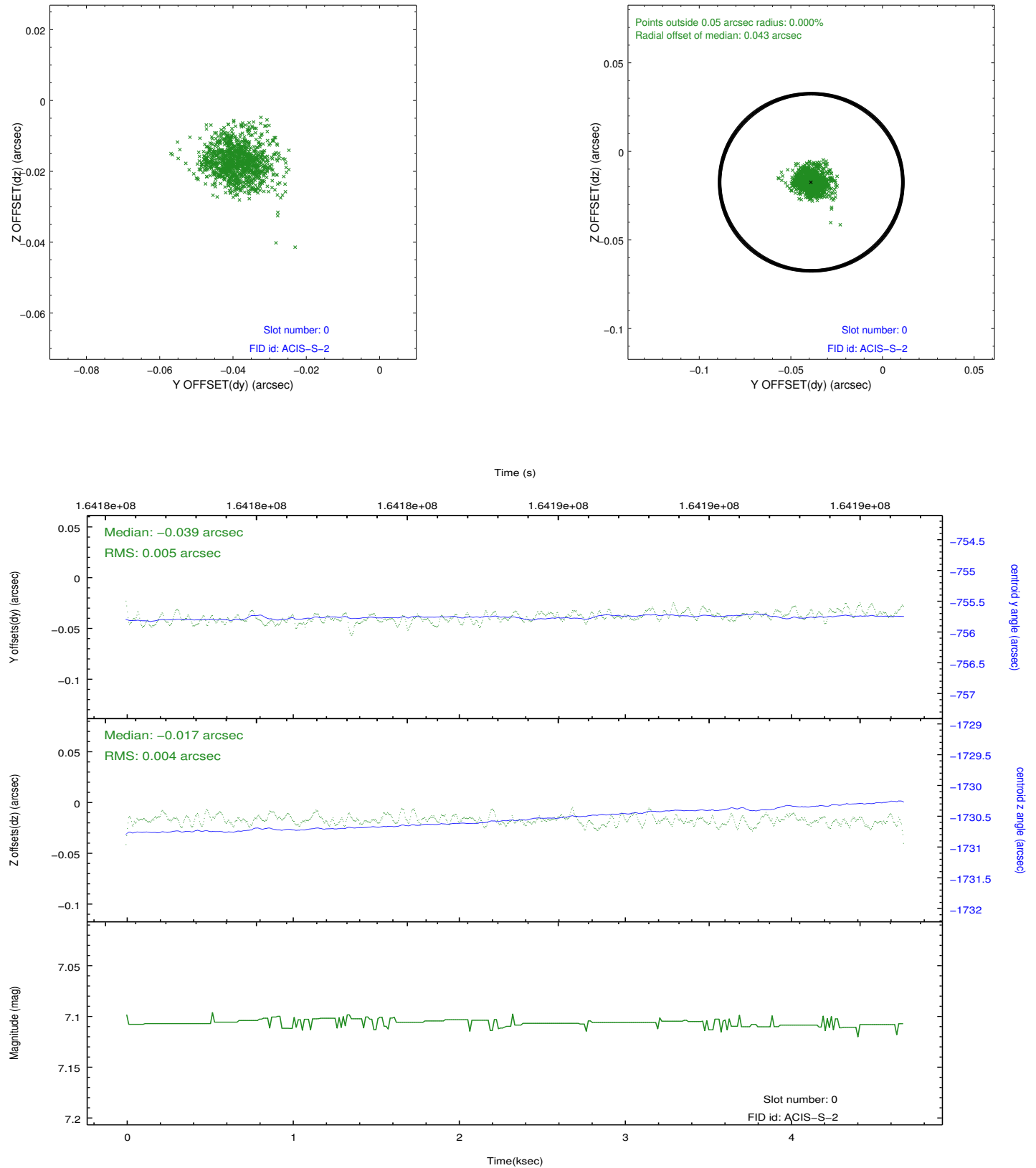


## 2.4.5 Slot 7

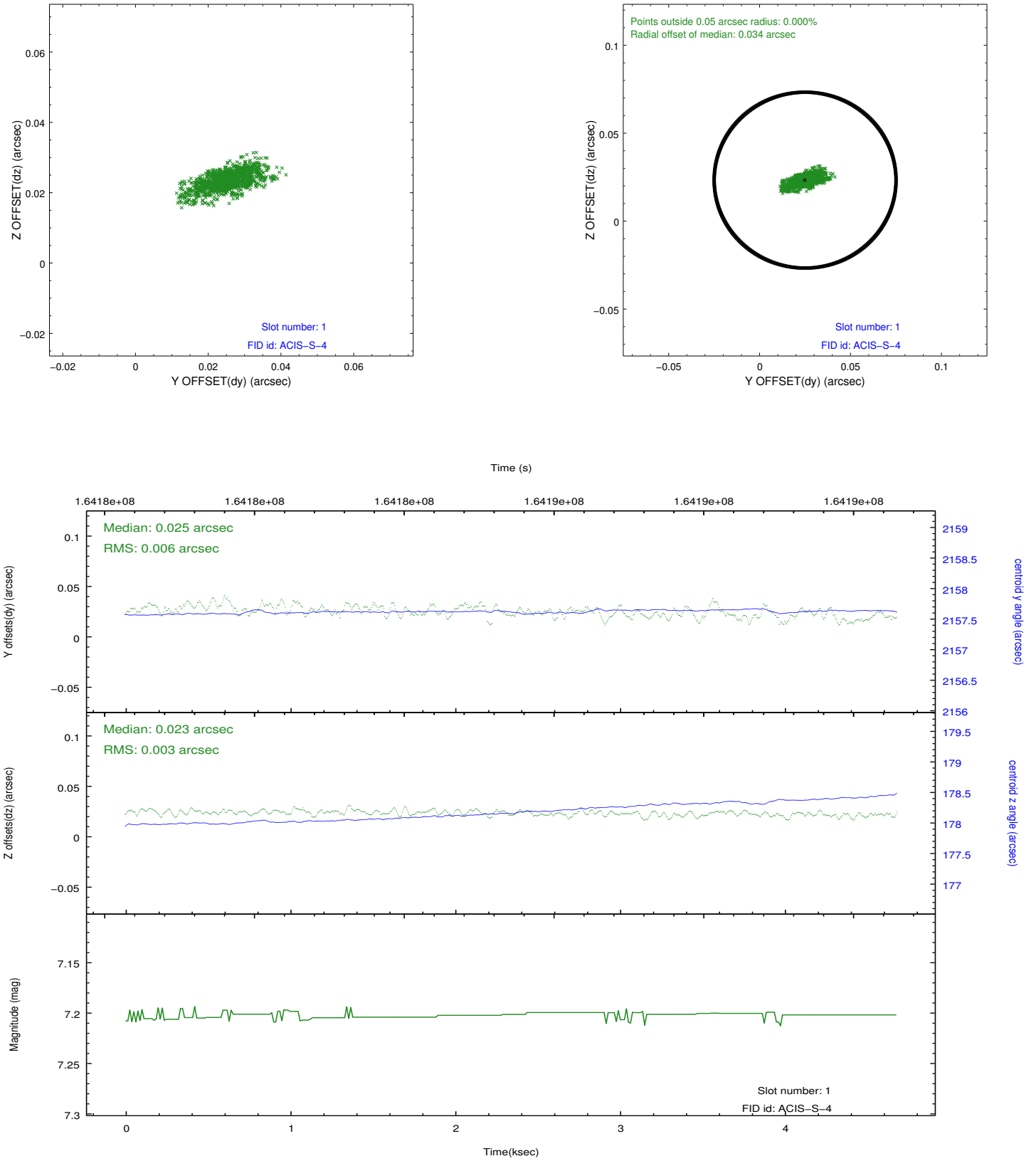


## 2.5 FID Slots

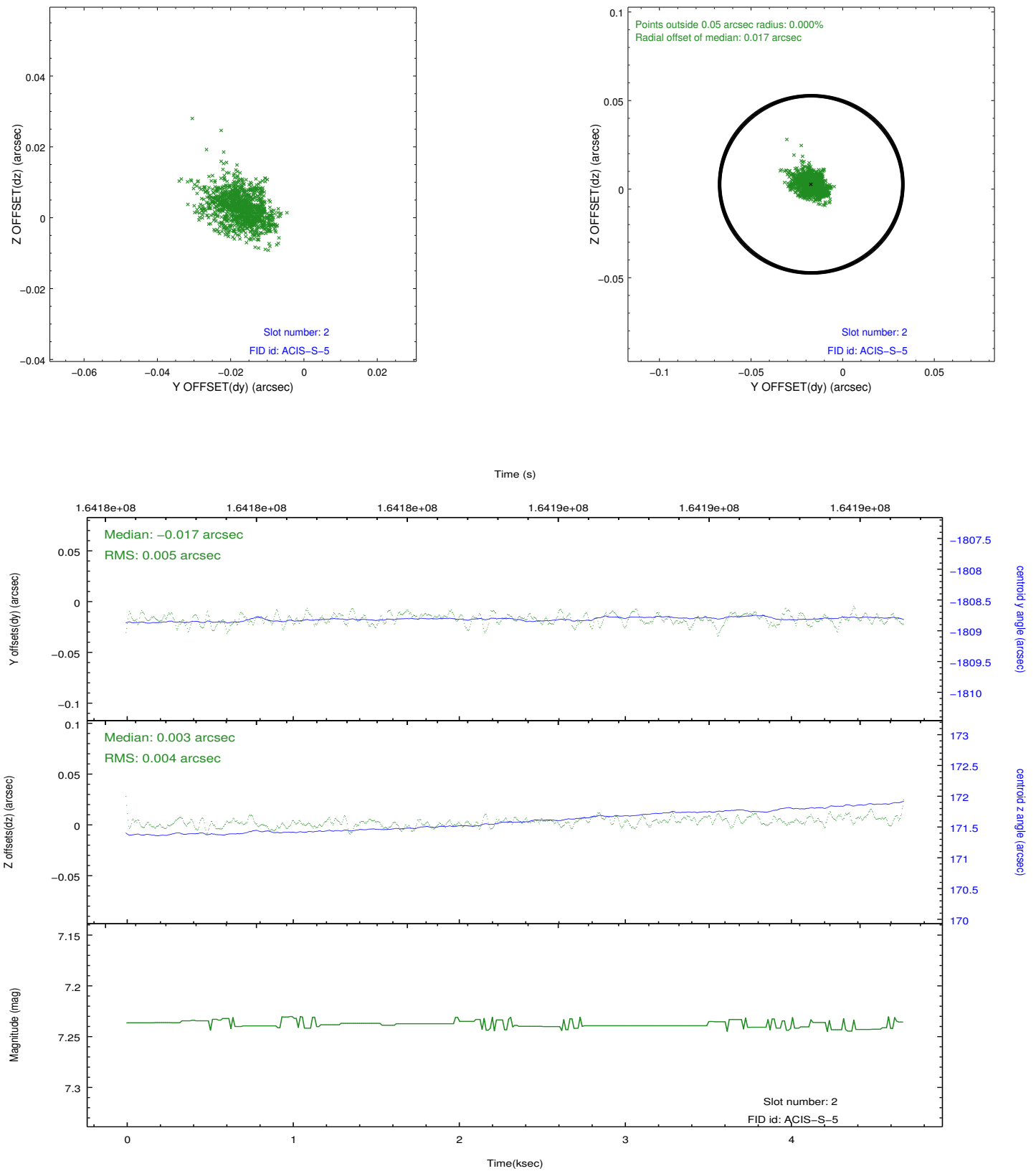
### 2.5.1 Slot 0



## 2.5.2 Slot 1



### 2.5.3 Slot 2



## A Summary

### A.1 Status

V&V Scientist	Jen Lauer
V&V Date (YYYY-MM-DD)	2012.11.08
V&V Edition	1
V&V Disposition and Status	OK
V&V Charge Time	4.467

### A.2 Comments