

V&V Reference Report

L2 ASCDS Version : 8.4.5

Observation 4106 - L2 Version 3
Chandra X-Ray Center

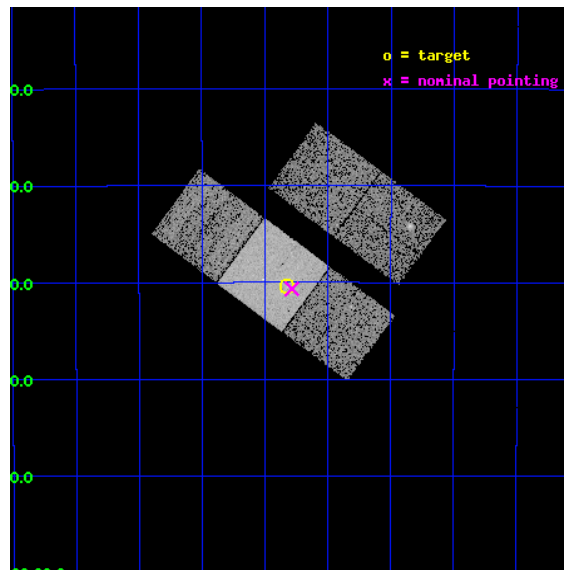
L2 Processing Date : Oct 26 2012

Contents

1	Front	2
2	OBI	3
2.1	OBI	3
2.1.1	Images	3
2.1.2	Bias	3
2.1.3	Parameters	4
2.1.4	Events	4
2.2	Compared Parameters	5
2.3	Aspect	6
2.4	Star Slots	9
2.4.1	Slot 3	9
2.4.2	Slot 4	10
2.4.3	Slot 5	11
2.4.4	Slot 6	12
2.4.5	Slot 7	13
2.5	FID Slots	14
2.5.1	Slot 0	14
2.5.2	Slot 1	15
2.5.3	Slot 2	16
A	Summary	17
A.1	Status	17
A.2	Comments	17

1 Front

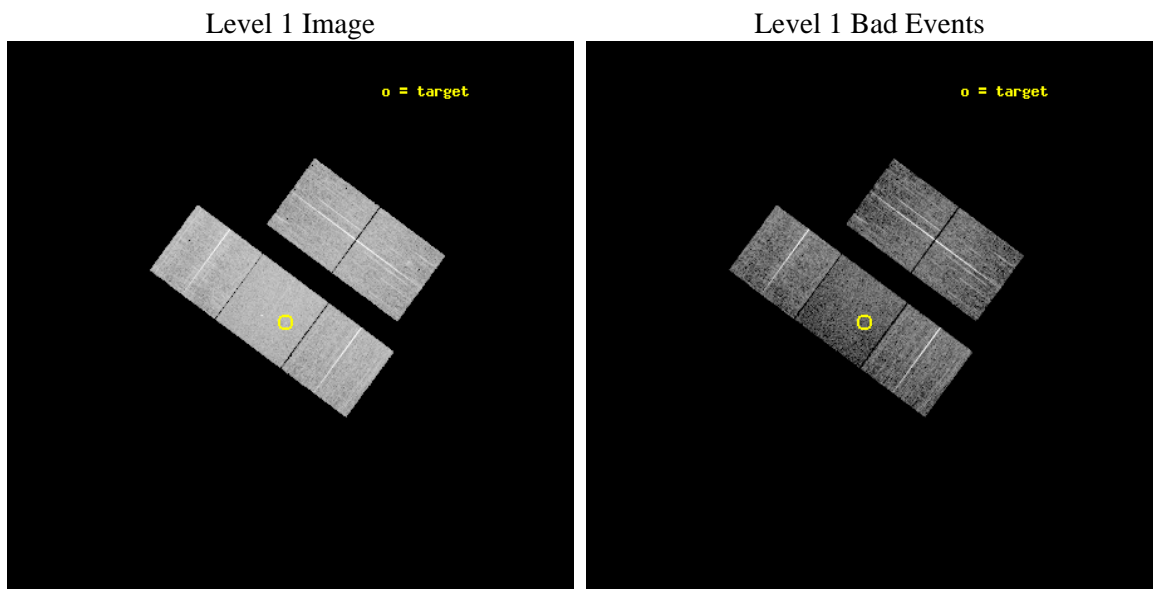
seq_num	700785	Sequence number
obs_id	4106	Observation id
title	THE X-RAY PROPERTIES OF ULTRALUMINOUS INFRARED GALAXIES (ULIGS)	Pr
observer	Professor Andrew Wilson	Principal investigator
object	F04103-2838	Source name
dtcycle	0	
cycle	P	events from which exps? Prim/Second/Both
ra_targ	63.08125	Observer's specified target RA [deg]
dec_targ	-28.506778	Observer's specified target Dec [deg]
ra_nom	63.071402394733	Nominal RA [deg]
dec_nom	-28.511070055745	Nominal Dec [deg]
roll_nom	216.47314841852	Nominal Roll [deg]
revision	3	Processing version of data
ontime	10471.799979836	Sum of GTIs [s]
livetime	10334.978203872	Livetime [s]
ontime2	10468.659019619	Sum of GTIs [s]
ontime3	10468.659039527	Sum of GTIs [s]
ontime6	10465.518079281	Sum of GTIs [s]
ontime7	10471.799979836	Sum of GTIs [s]
ontime8	10468.659019589	Sum of GTIs [s]
l2events	66651	Number of level 2 events



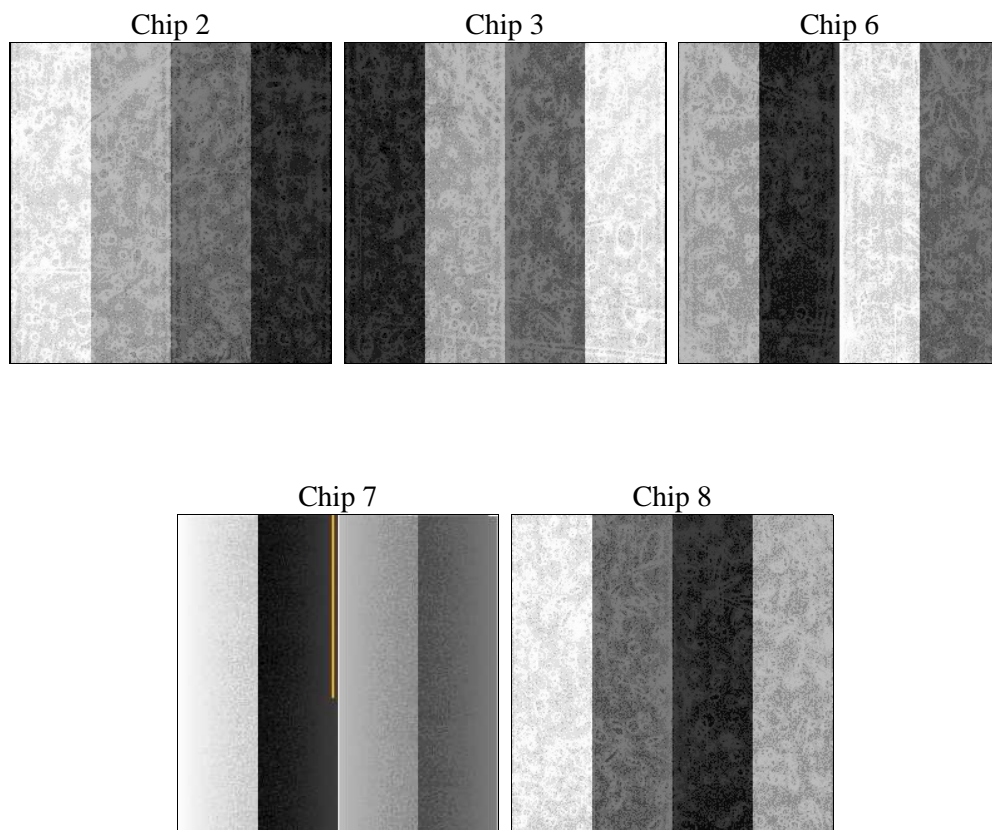
2 OBI

2.1 OBI

2.1.1 Images



2.1.2 Bias



2.1.3 Parameters

obi_num	0	Obi number	sched_exp_time	10300.000000	[s] Scheduled observation exposure time
ascdsver	8.4.5	Processing system revision	ontime	10471.799979836	Sum of GTIs [s]
caldsver	4.5.2	 	ontime2	10468.659019619	Sum of GTIs [s]
date	2012-10-26T21:55:12	Date and time of file creation	ontime3	10468.659039527	Sum of GTIs [s]
revision	3	Processing version of data	ontime6	10465.518079281	Sum of GTIs [s]
			ontime7	10471.799979836	Sum of GTIs [s]
			ontime8	10468.659019589	Sum of GTIs [s]
			l1events	348940	Number of level 1 events

2.1.4 Events

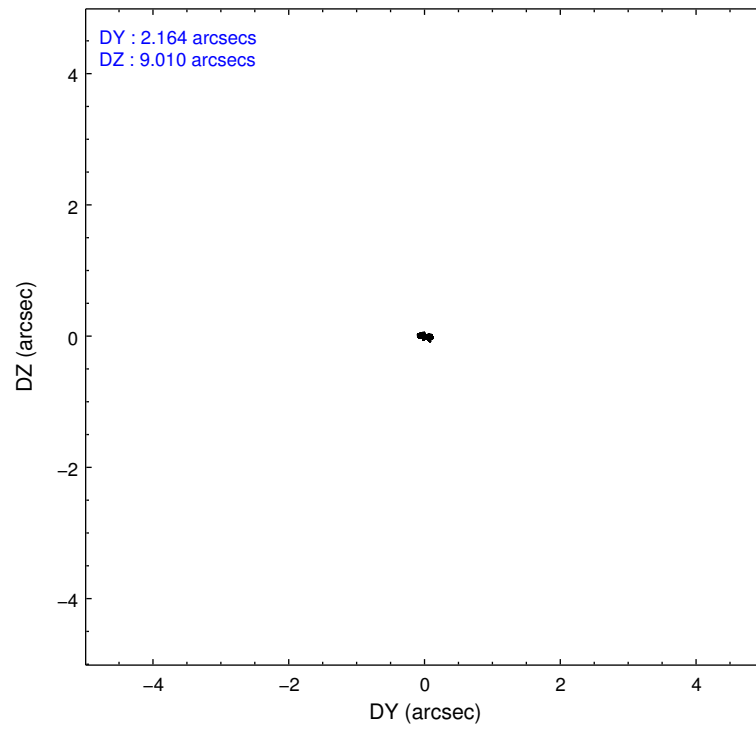
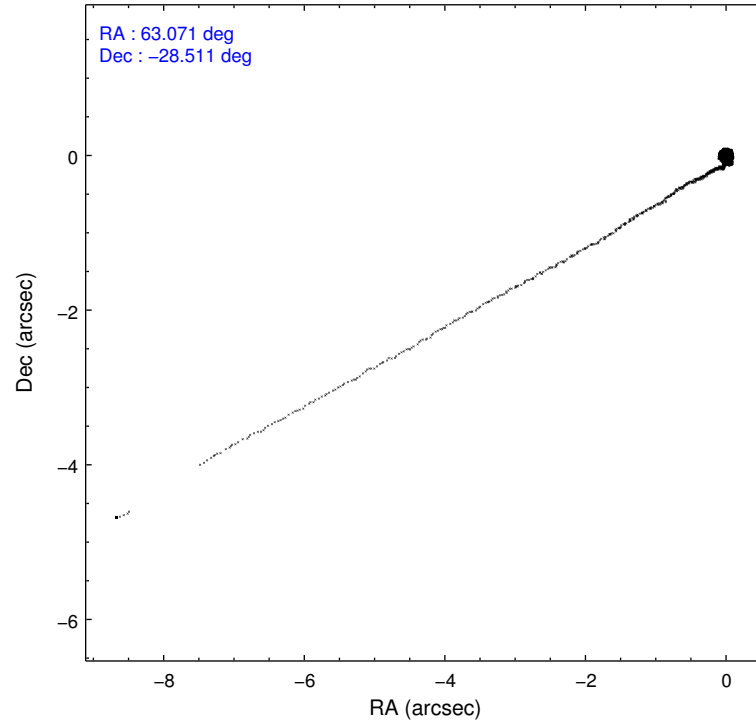
	ccd 2	ccd 3	ccd 6	ccd 7	ccd 8
level 1 events	62994	61491	65614	77203	81638
rejected events	54998	53976	56904	40056	63199
rejected %	87%	87%	86%	51%	77%

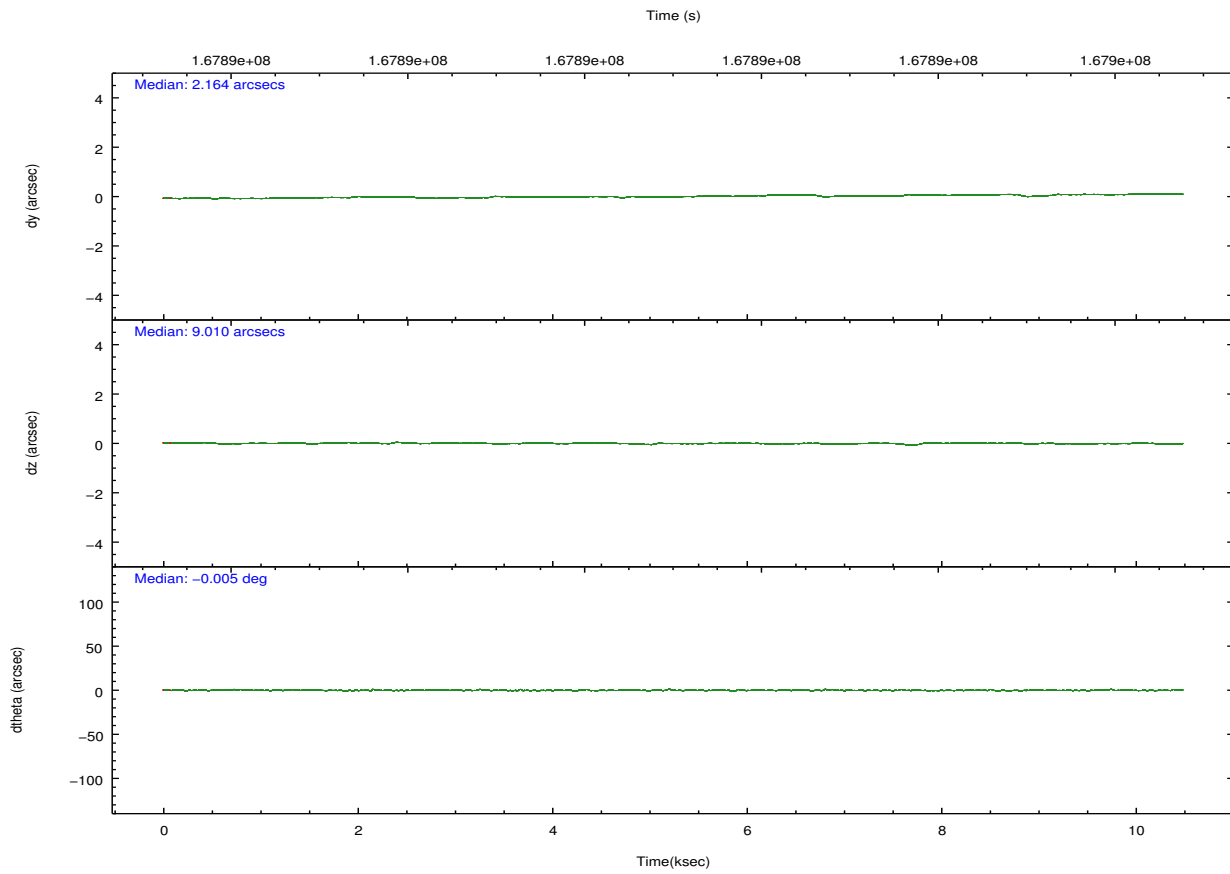
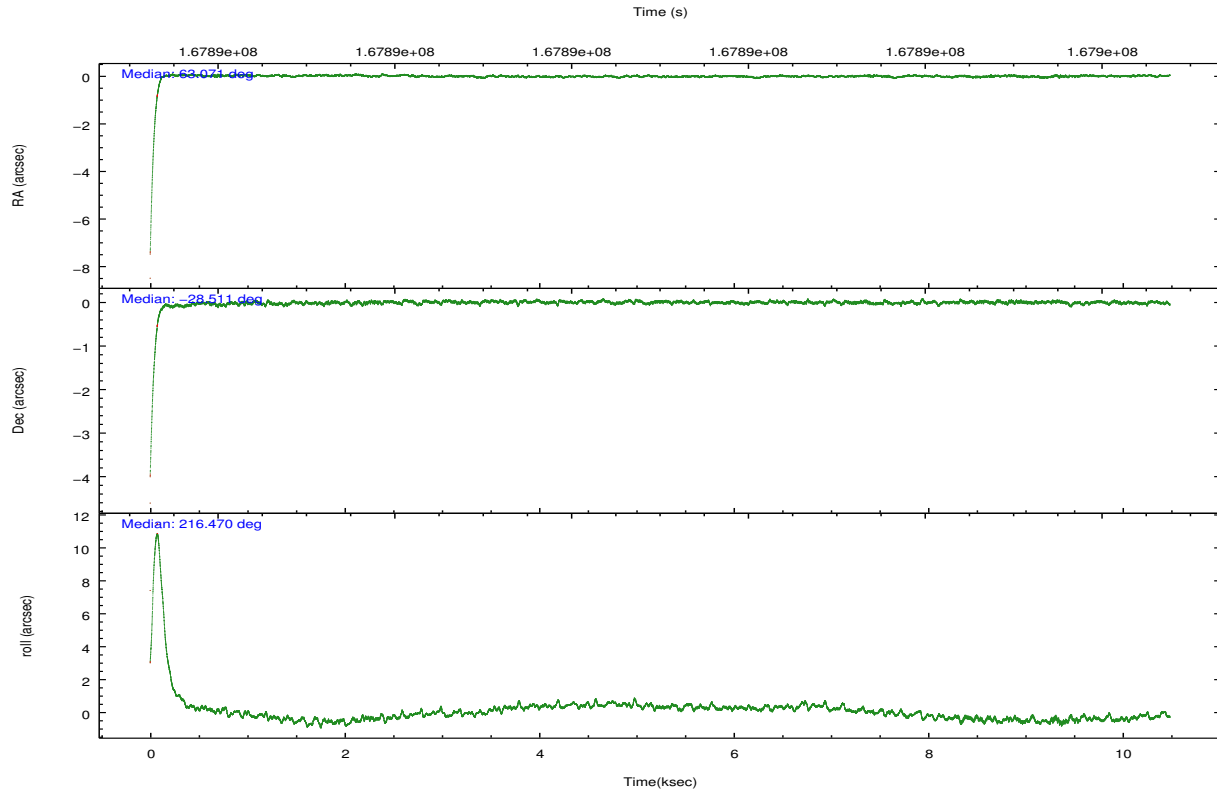
	ccd 2	ccd 3	ccd 6	ccd 7	ccd 8
grade 0 events	4051	3690	4363	4266	8173
	6%	6%	6%	5%	10%
grade 1 events	47	25	40	58	64
	0%	0%	0%	0%	0%
grade 2 events	1782	1511	1779	8136	3904
	2%	2%	2%	10%	4%
grade 3 events	747	837	863	3701	1992
	1%	1%	1%	4%	2%
grade 4 events	769	798	846	3660	1856
	1%	1%	1%	4%	2%
grade 5 events	1938	2313	2469	7205	3366
	3%	3%	3%	9%	4%
grade 6 events	1401	1464	1707	20891	4658
	2%	2%	2%	27%	5%
grade 7 events	52259	50853	53547	29286	57625
	82%	82%	81%	37%	70%

2.2 Compared Parameters

Parameter	Planned	Actual	Parameter	Planned	Actual
Instrument	ACIS	ACIS	Obspar format version number	7	7
Detector	ACIS-23678	ACIS-23678	Obspar file type	PREDICTED	ACTUAL
Grating	NONE	NONE	Obspar update status	NONE	UPDATED
Data mode	VFAINT	VFAINT	Number of optional ACIS chips dropped	0	0
Observation mode	POINTING	POINTING	On-chip summing requested	N	N
[deg] Pointing RA	63.083369	63.07140239473264	Subarray requested	NONE	NONE
[deg] Pointing Dec	-28.485962	-28.51107005574504	Alternating exposures requested	N	N
[deg] Pointing Roll	216.322237	216.4731484185189	[s] Primary exposure time	0.000000	3.1
[mm] SIM focus pos	-0.684267	-0.6828225247311905			
[mm] SIM defocus	0	0.001444936568705701			
[mm] SIM translation stage pos	-190.132523	-190.1400660498719			
[mm] SIM translation stage offset	0	0.00754346686406393			
[s] Observation start time (MET)	167885939.184000	167884375.4428			
Observation start date	2003-04-28T02:57:55	2003-04-28T02:32:55			
[s] Observation end time (MET)	167896239.184000	167897193.58084			
Observation end date	2003-04-28T05:49:35	2003-04-28T06:06:33			
Read mode	TIMED	TIMED			

2.3 Aspect



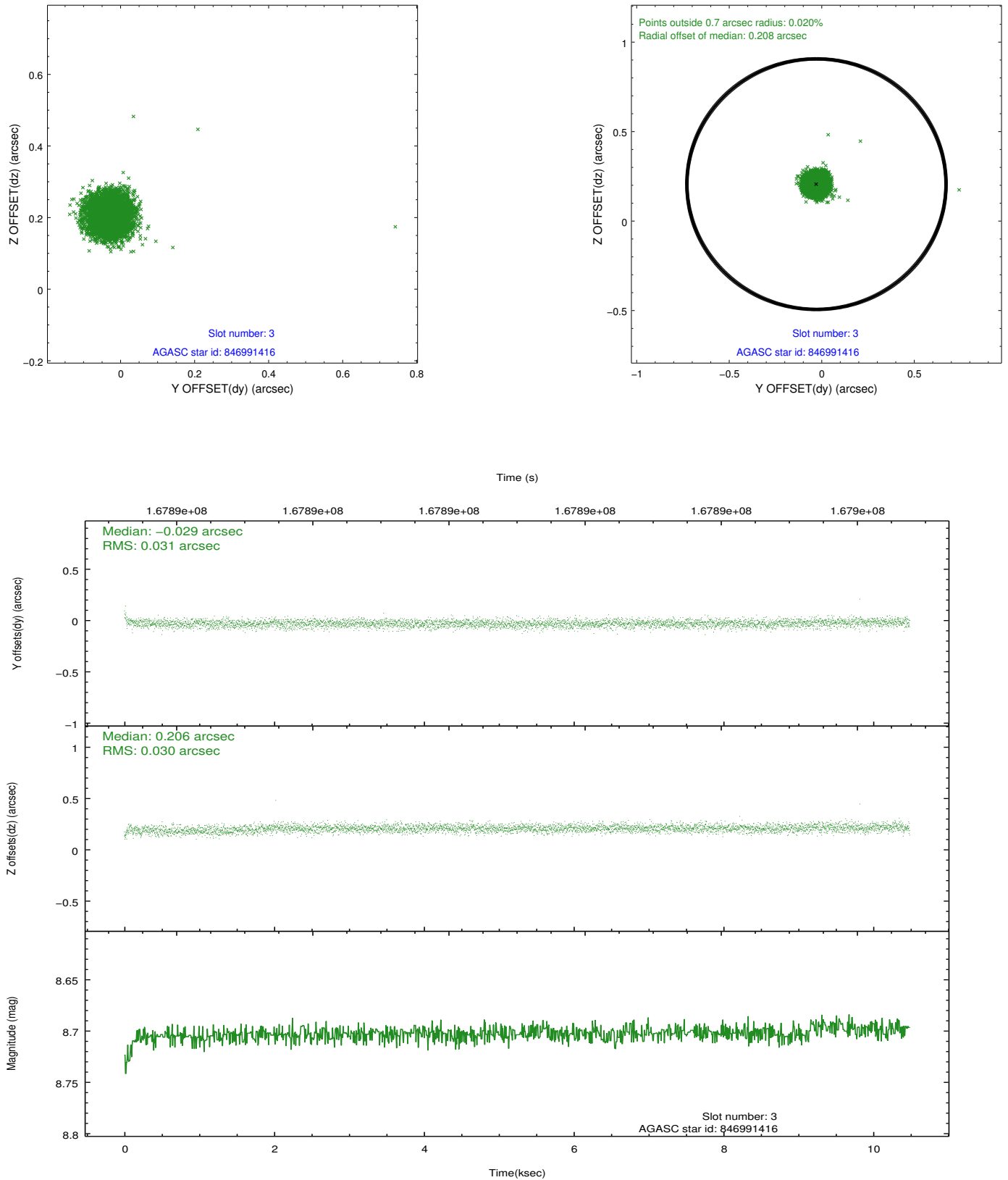


Slot Statistics

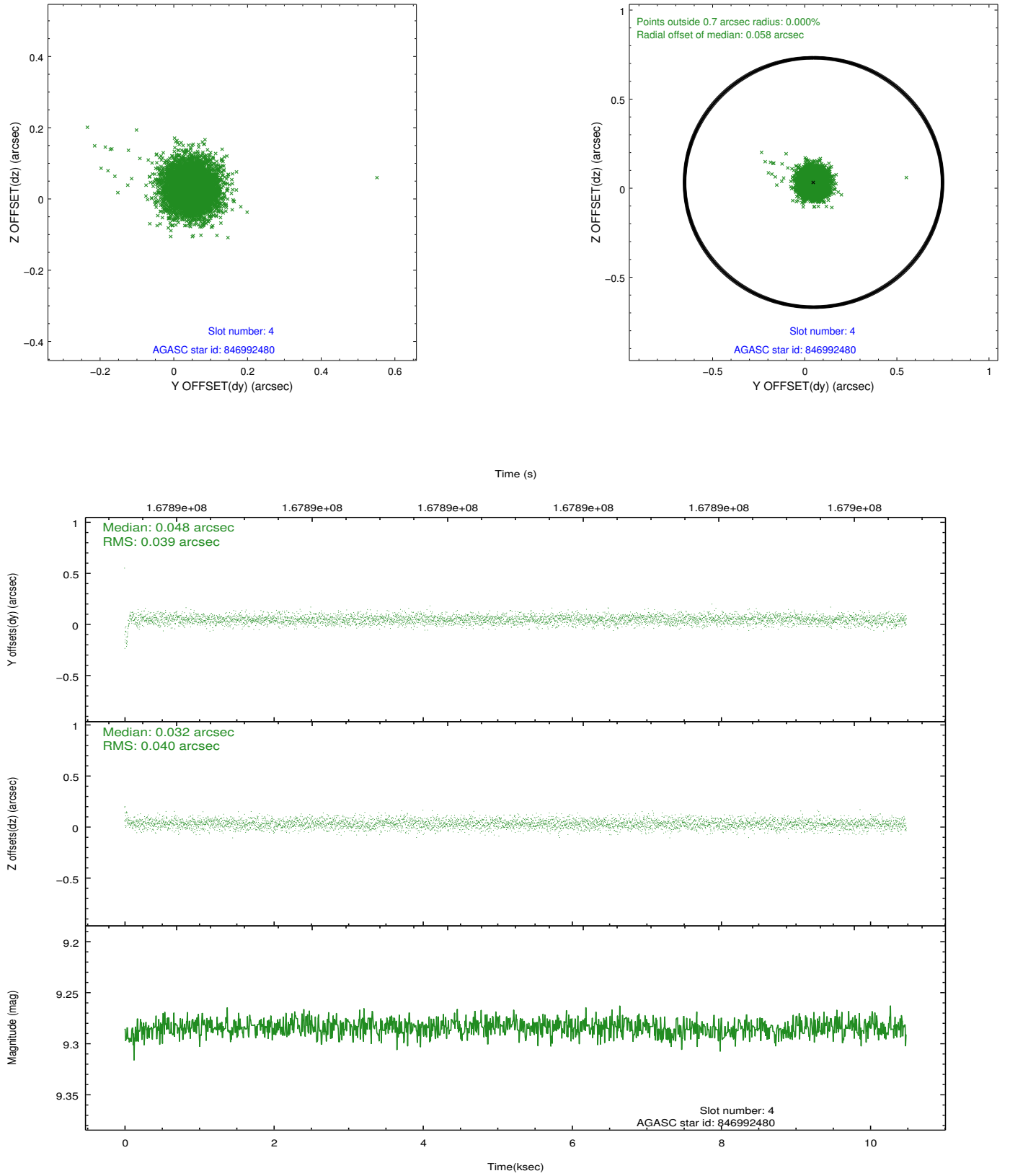
slot	status	id	mag	n_pts	med_dy	med_dz	dr1	dr2	ra	dec	mean_y	mean_z
0	FID	ACIS-S-2	7.10	2556	-0.044	-0.024	0.007	0.011	0.000000	0.000000	-754.82	-1730.26
1	FID	ACIS-S-4	7.20	2556	0.015	0.028	0.006	0.010	0.000000	0.000000	2158.27	177.79
2	FID	ACIS-S-5	7.24	2556	-0.002	0.006	0.007	0.011	0.000000	0.000000	-1806.99	171.97
3	GUIDE	846991416	8.70	5113	-0.029	0.206	0.045	0.073	62.723044	-29.054268	2126.65	978.65
4	GUIDE	846992480	9.28	5110	0.048	0.032	0.058	0.096	63.122470	-29.099933	1210.75	1854.13
5	GUIDE	846997656	9.51	5105	0.011	-0.089	0.067	0.113	62.548524	-28.467498	1327.12	-1052.57
6	GUIDE	846989992	8.83	5111	-0.195	-0.170	0.047	0.078	63.139725	-27.984513	-1213.15	-1348.55
7	GUIDE	846988376	9.07	5112	0.166	0.018	0.051	0.085	63.900777	-28.395928	-2272.35	1279.15

2.4 Star Slots

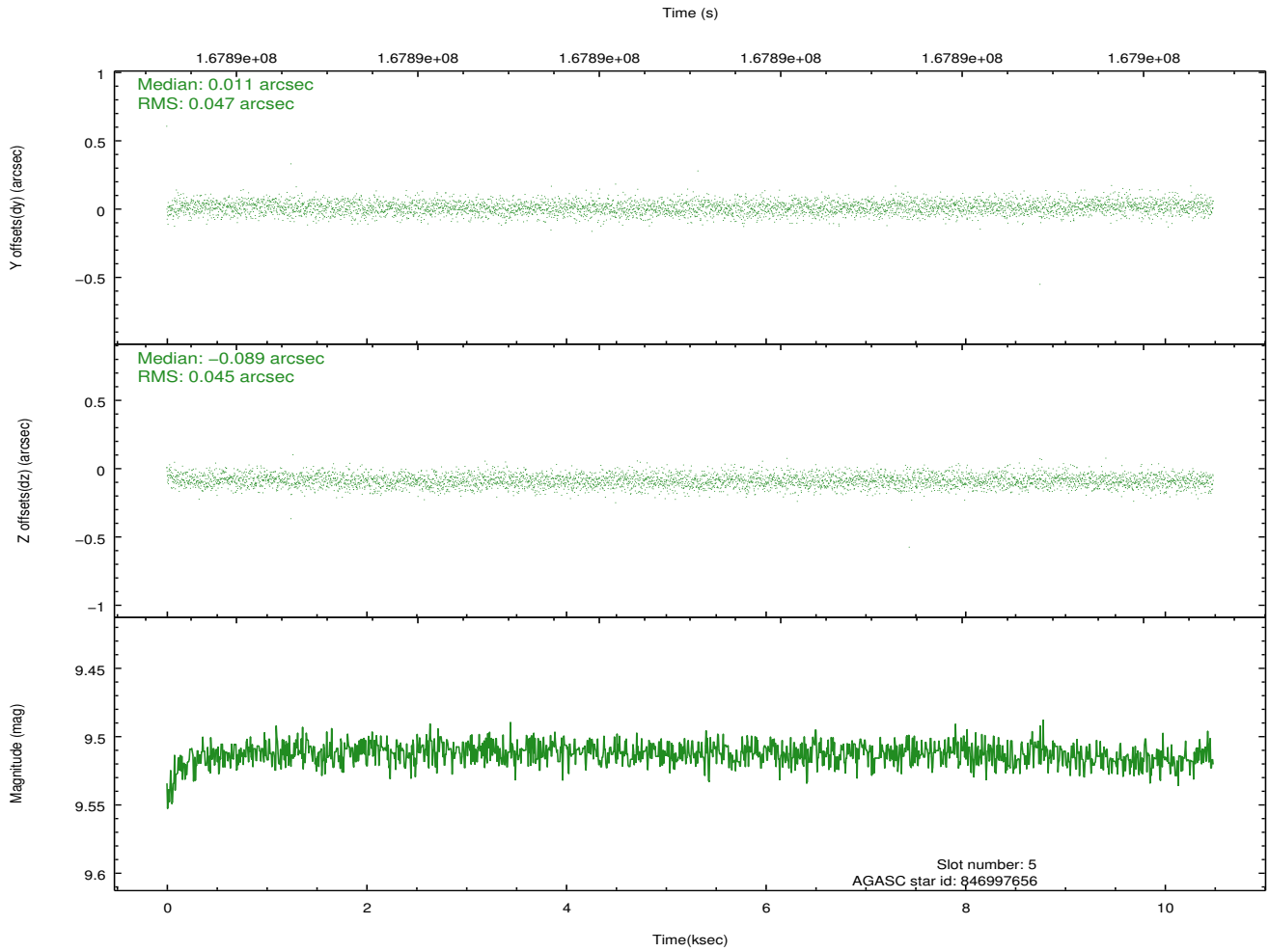
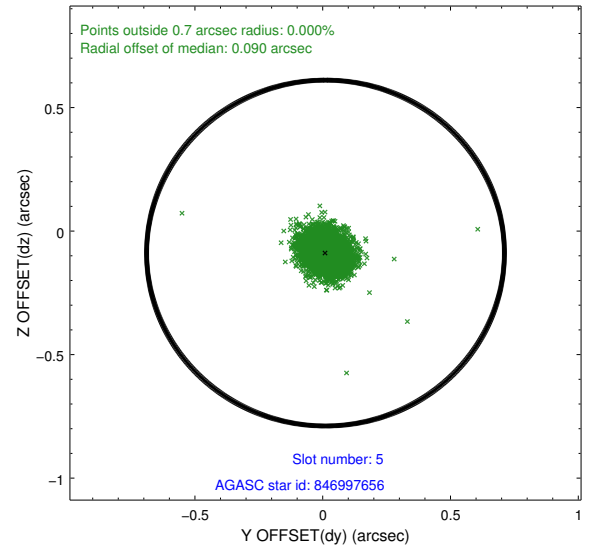
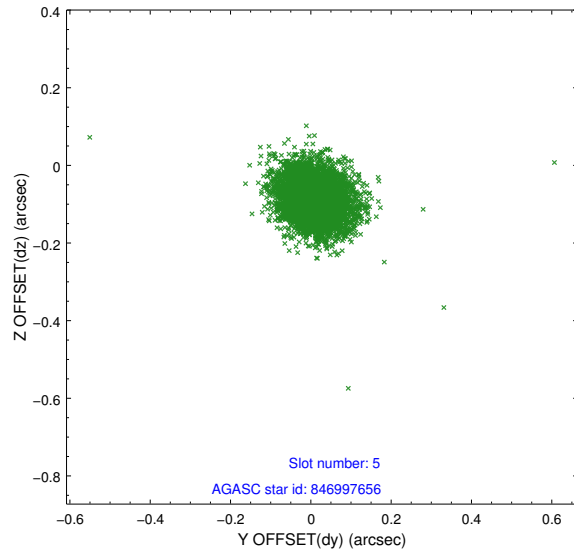
2.4.1 Slot 3



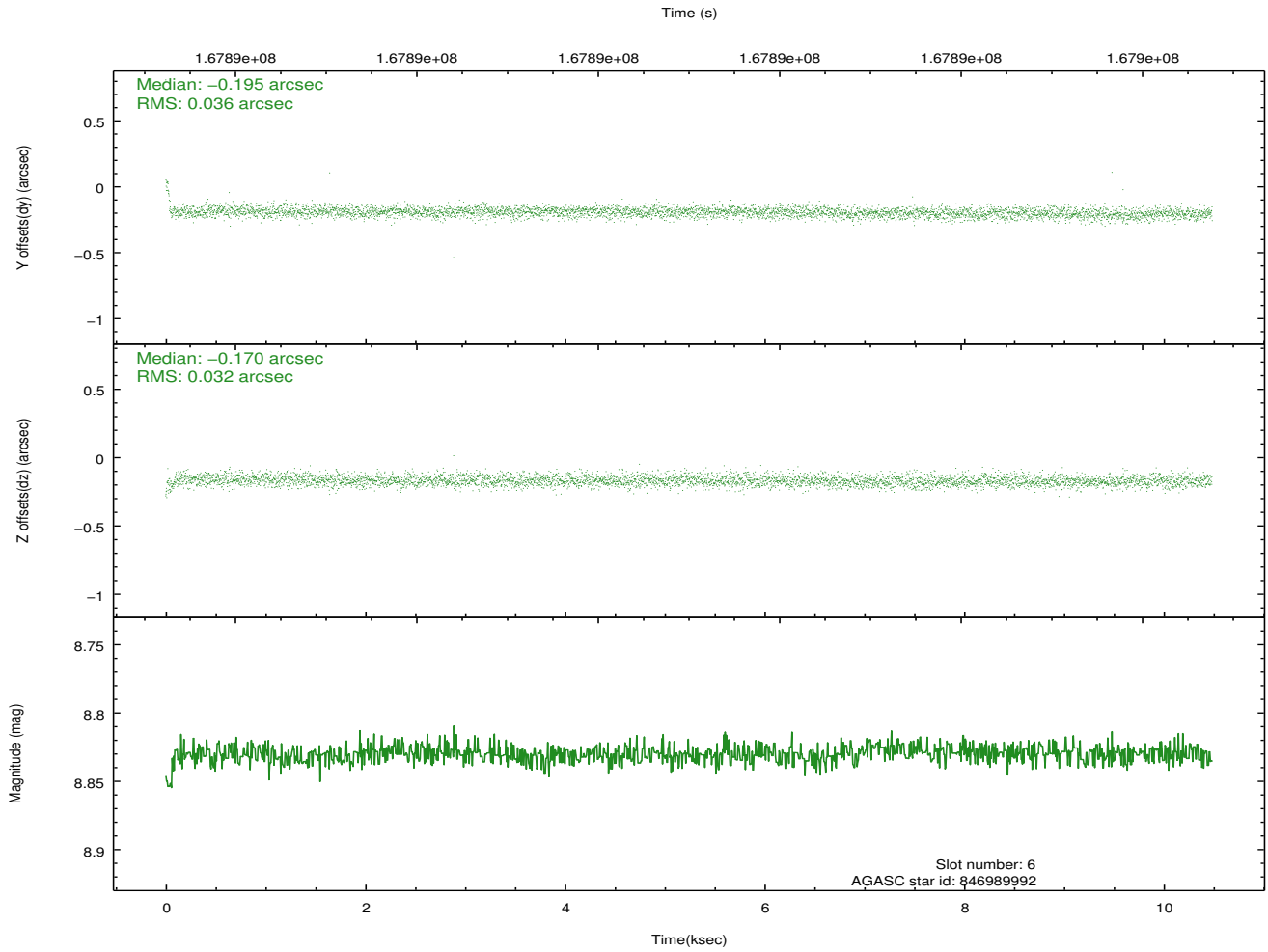
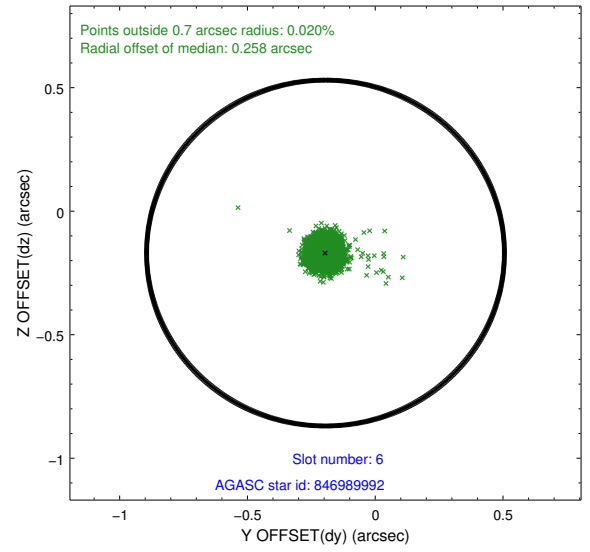
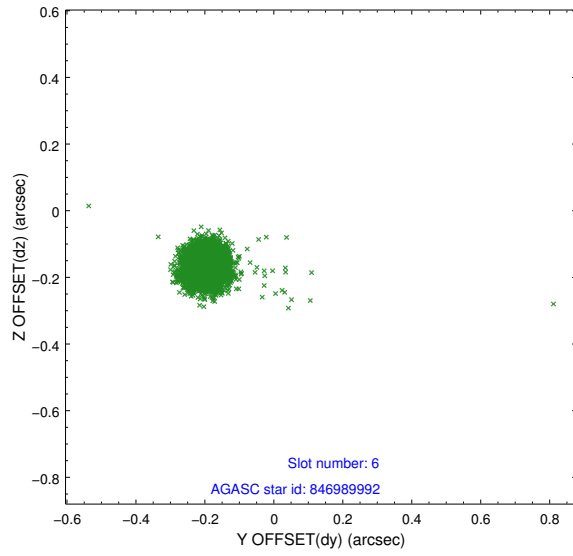
2.4.2 Slot 4



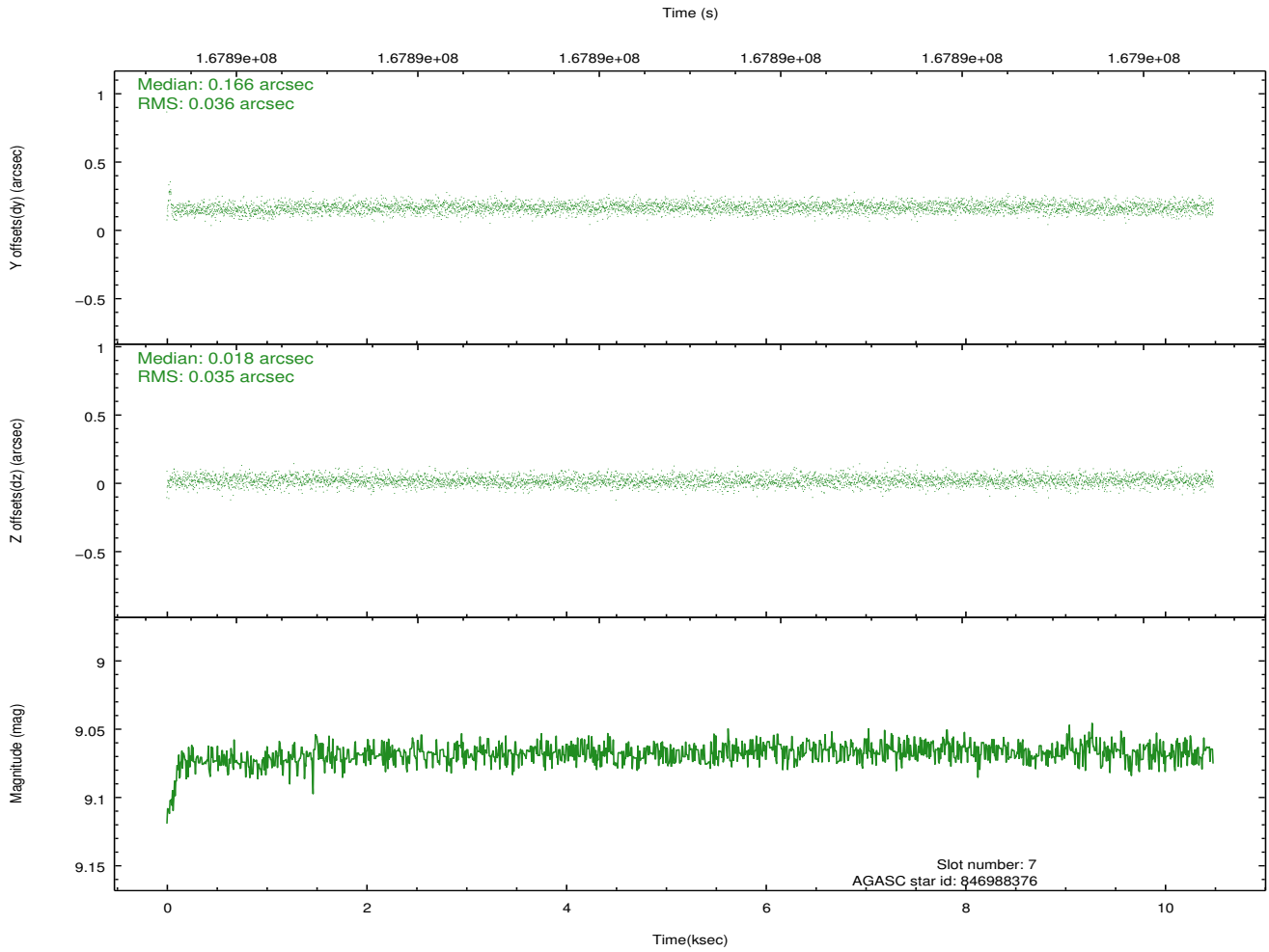
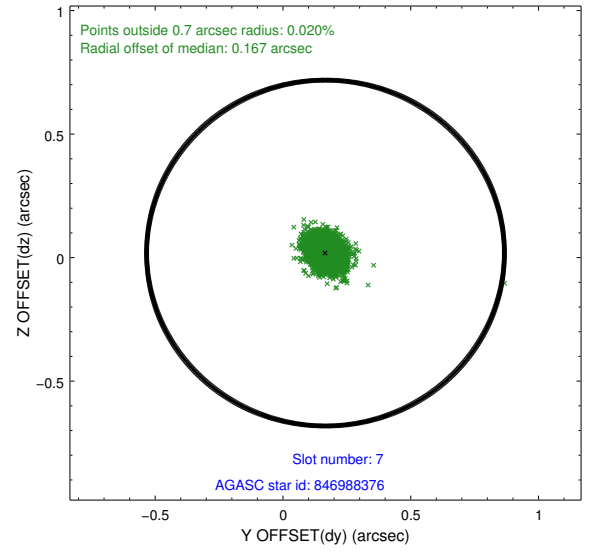
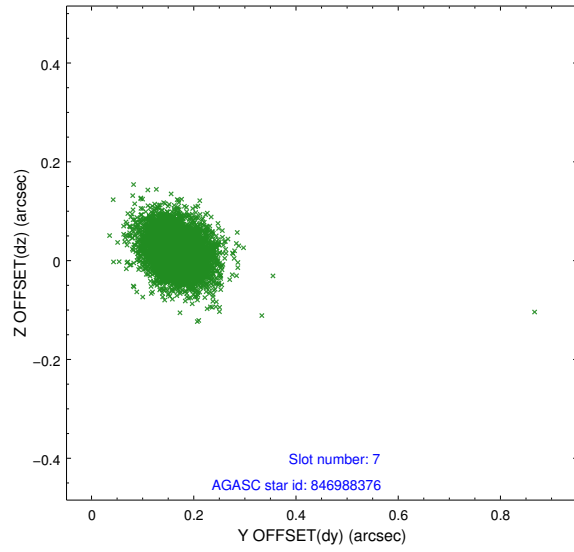
2.4.3 Slot 5



2.4.4 Slot 6

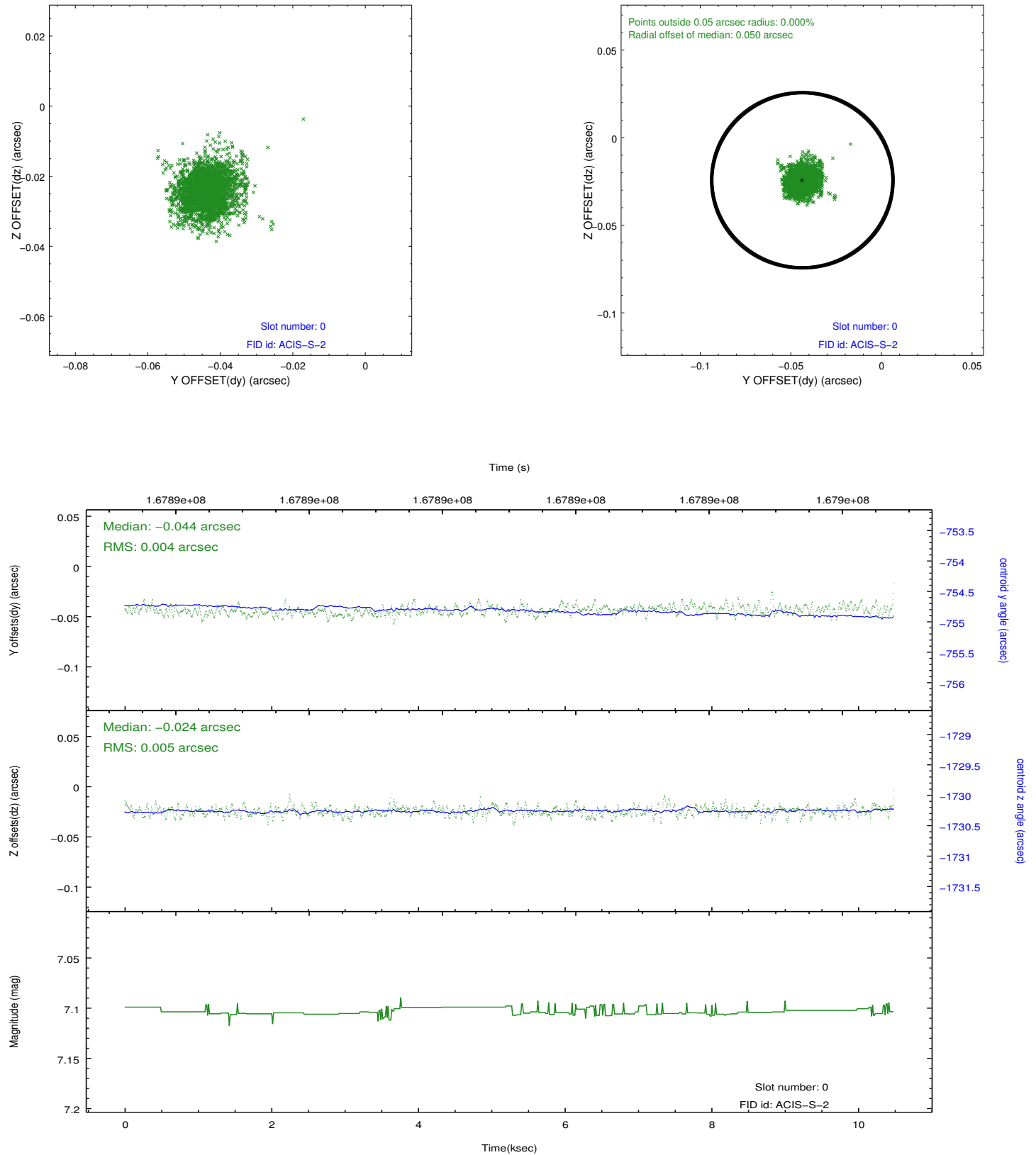


2.4.5 Slot 7

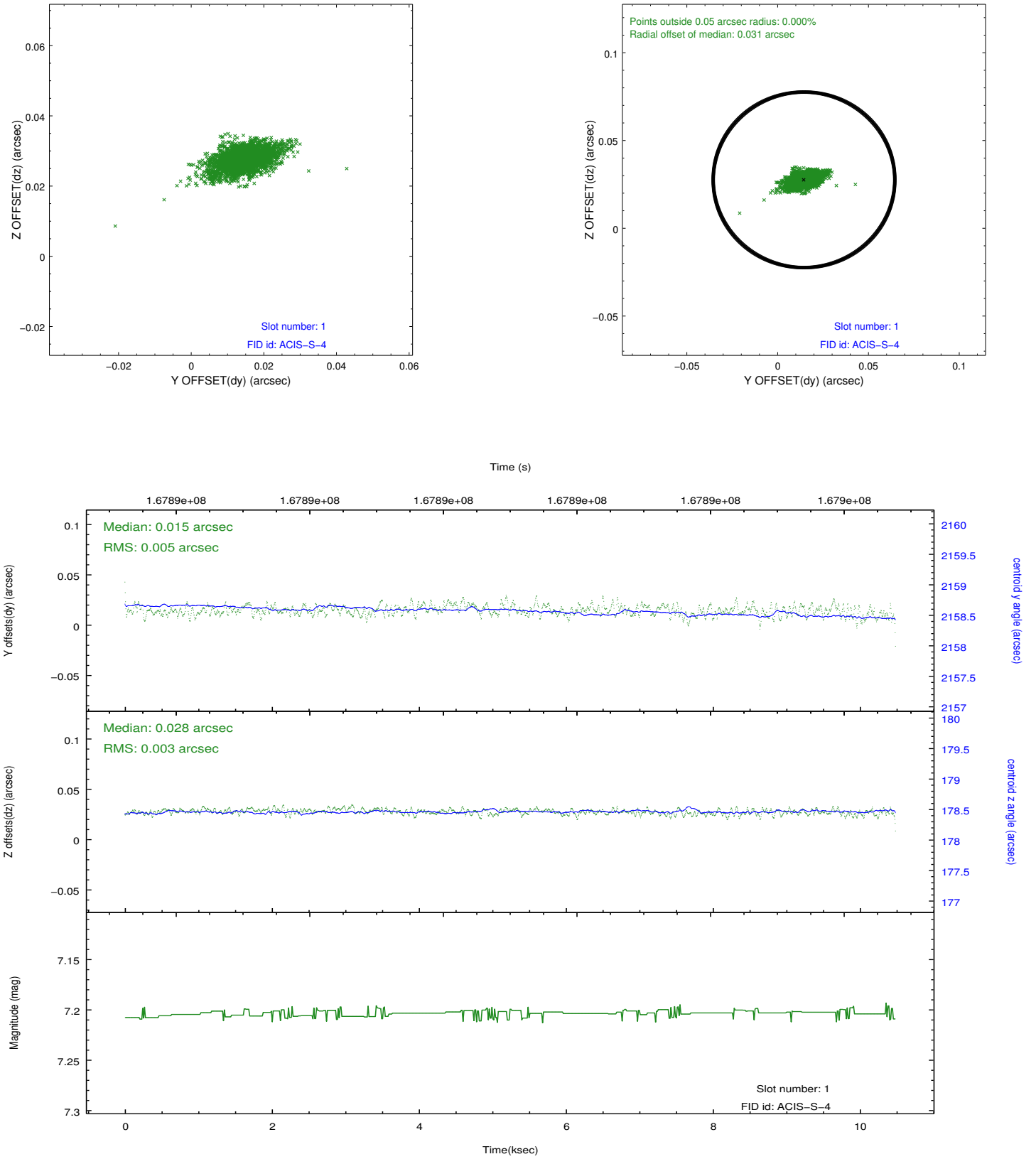


2.5 FID Slots

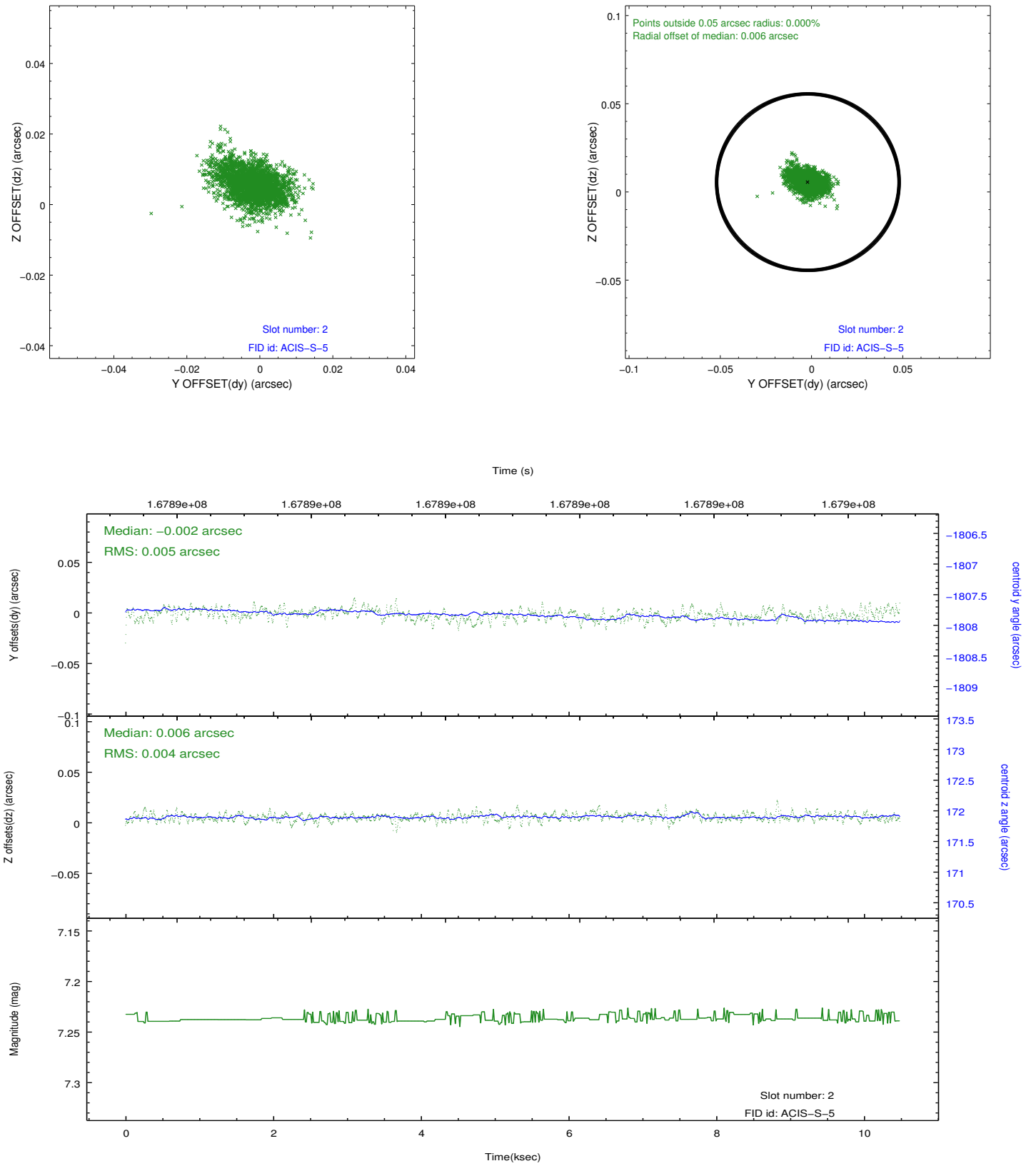
2.5.1 Slot 0



2.5.2 Slot 1



2.5.3 Slot 2



A Summary

A.1 Status

V&V Scientist	Joy Nichols
V&V Date (YYYY-MM-DD)	2013.01.16
V&V Edition	1
V&V Disposition and Status	OK
V&V Charge Time	10.471

A.2 Comments

This observation was taken with NO spacecraft dither due to an error in the spacecraft load. Pixel-to-pixel variations will be greater than they would have been in dithered mode. Chip boundaries are very sharp.