

V&V Reference Report

L2 ASCDS Version : 7.6.8

Observation 4065 - L2 Version 001
Chandra X-Ray Center

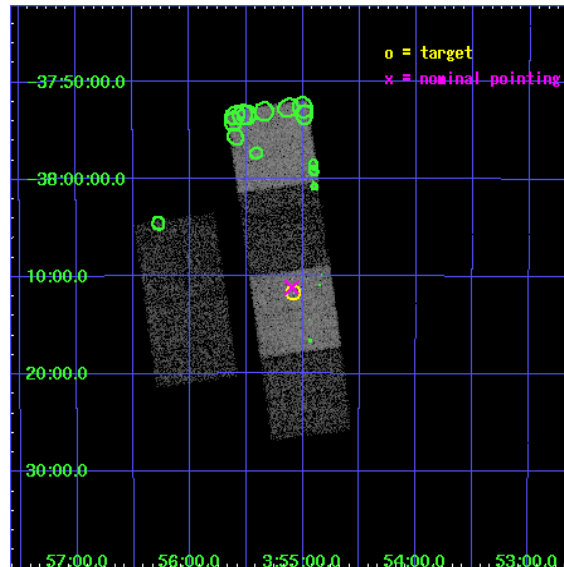
L2 Processing Date : Jul 6 2006

Contents

1	Front	2
2	OBI	3
2.1	OBI	3
2.1.1	Images	3
2.1.2	Bias	3
2.1.3	Parameters	4
2.1.4	Events	4
2.2	Compared Parameters	5
2.3	Aspect	6
2.4	Star Slots	9
2.4.1	Slot 3	9
2.4.2	Slot 4	10
2.4.3	Slot 5	11
2.4.4	Slot 6	12
2.4.5	Slot 7	13
2.5	FID Slots	14
2.5.1	Slot 0	14
2.5.2	Slot 1	15
2.5.3	Slot 2	16
3	Point Sources	17
A	Summary	18
A.1	Status	18
A.2	Comments	18

1 Front

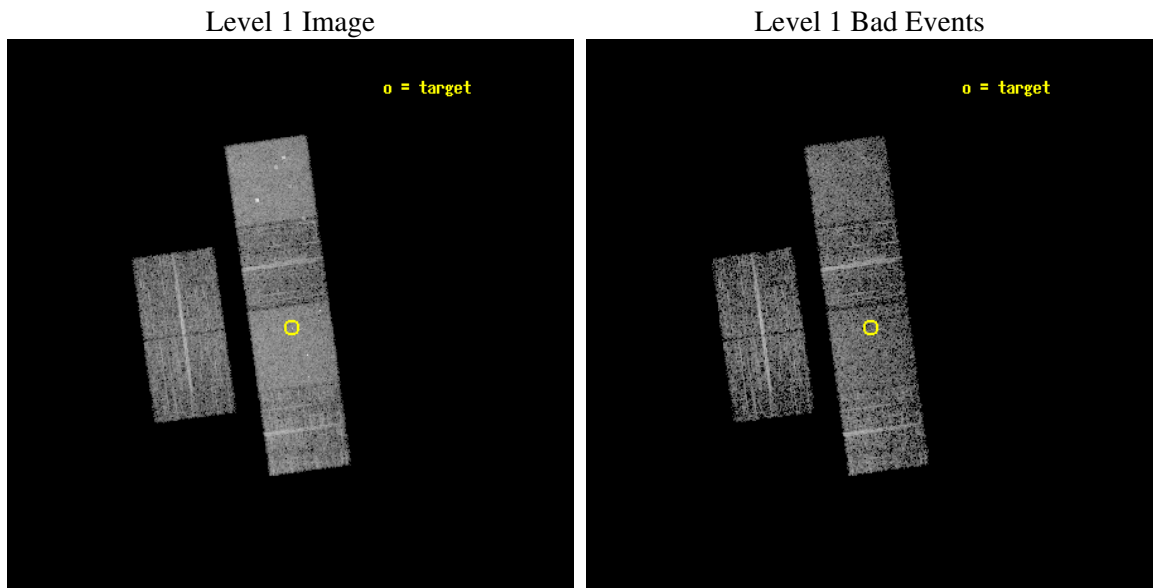
seq_num	700744
obs_id	4065
title	A CHANDRA SURVEY OF THE MOST LUMINOUS QUASARS AT $Z > 4$
observer	Dr. Cristian Vignali
object	BR 0353-3820
dtcycle	0
cycle	P
ra_targ	58.770417
dec_targ	-38.195083
ra_nom	58.774277907537
dec_nom	-38.185870832801
roll_nom	82.105720122504
revision	2
ontime	4115.1999846697
livetime	4063.0908445879
ontime2	4115.1999846697
ontime3	4115.1999846697
ontime5	4115.1999846697
ontime6	4115.1999846697
ontime7	4115.1999846697
ontime8	4115.1999846697
l2events	55467



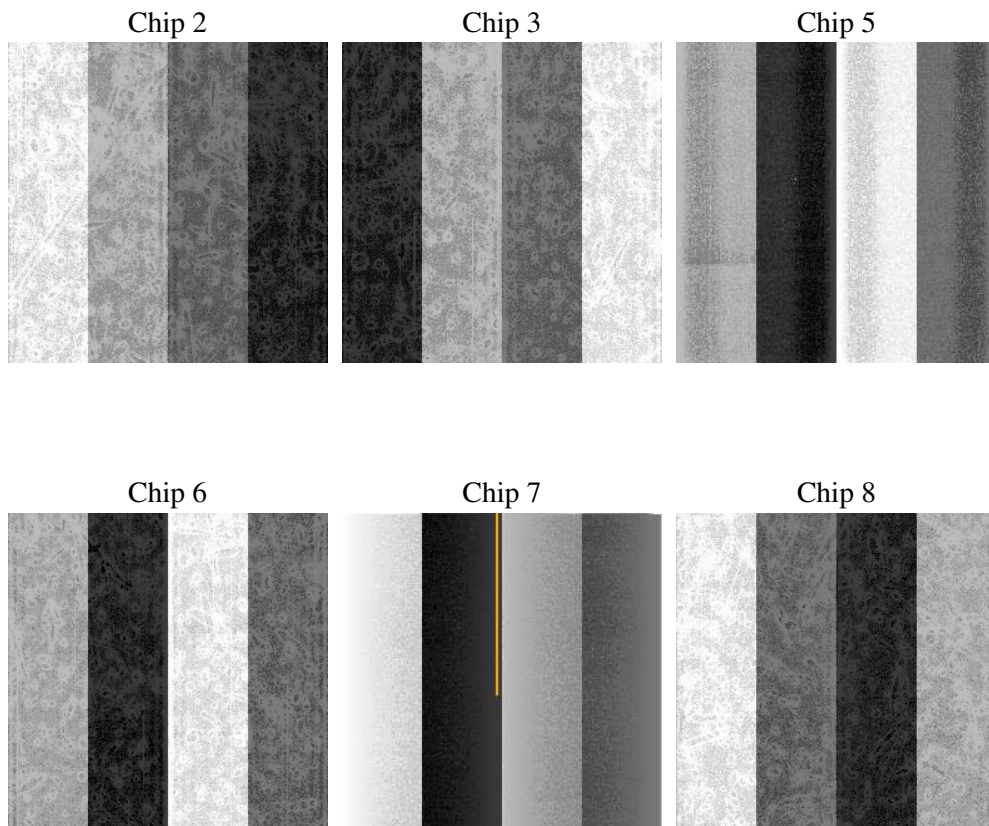
2 OBI

2.1 OBI

2.1.1 Images



2.1.2 Bias



2.1.3 Parameters

obi_num	0
ascdsver	7.6.8
caldsver	3.2.2
date	2006-07-06T03:54:00
revision	2

sched_exp_time	3955.000000
ontime	4605.4670275748
ontime2	4605.4670275748
ontime3	4605.4670275748
ontime5	4605.4670475125
ontime6	4605.4670275748
ontime7	4605.4670275748
ontime8	4608.708047688
l1events	220324

2.1.4 Events

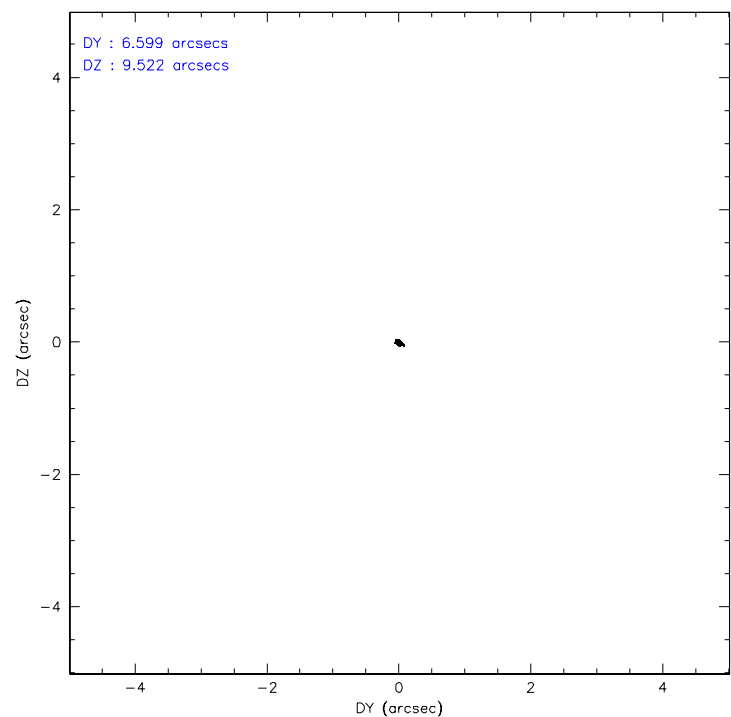
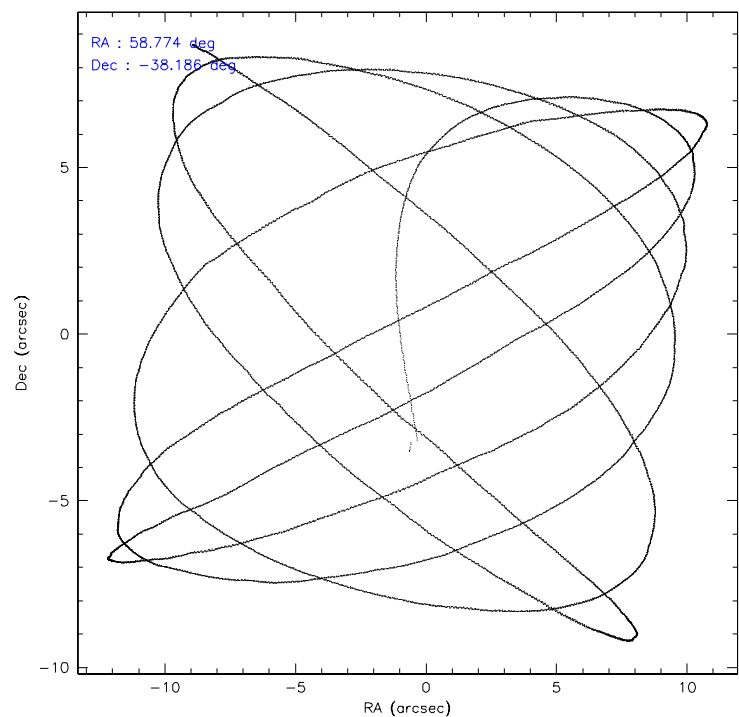
	ccd 2	ccd 3	ccd 5	ccd 6	ccd 7	ccd 8
level 1 events	29631	28402	50080	28779	45905	37527
rejected events	25907	24524	26853	24616	26194	29455
rejected %	87%	86%	53%	85%	57%	78%

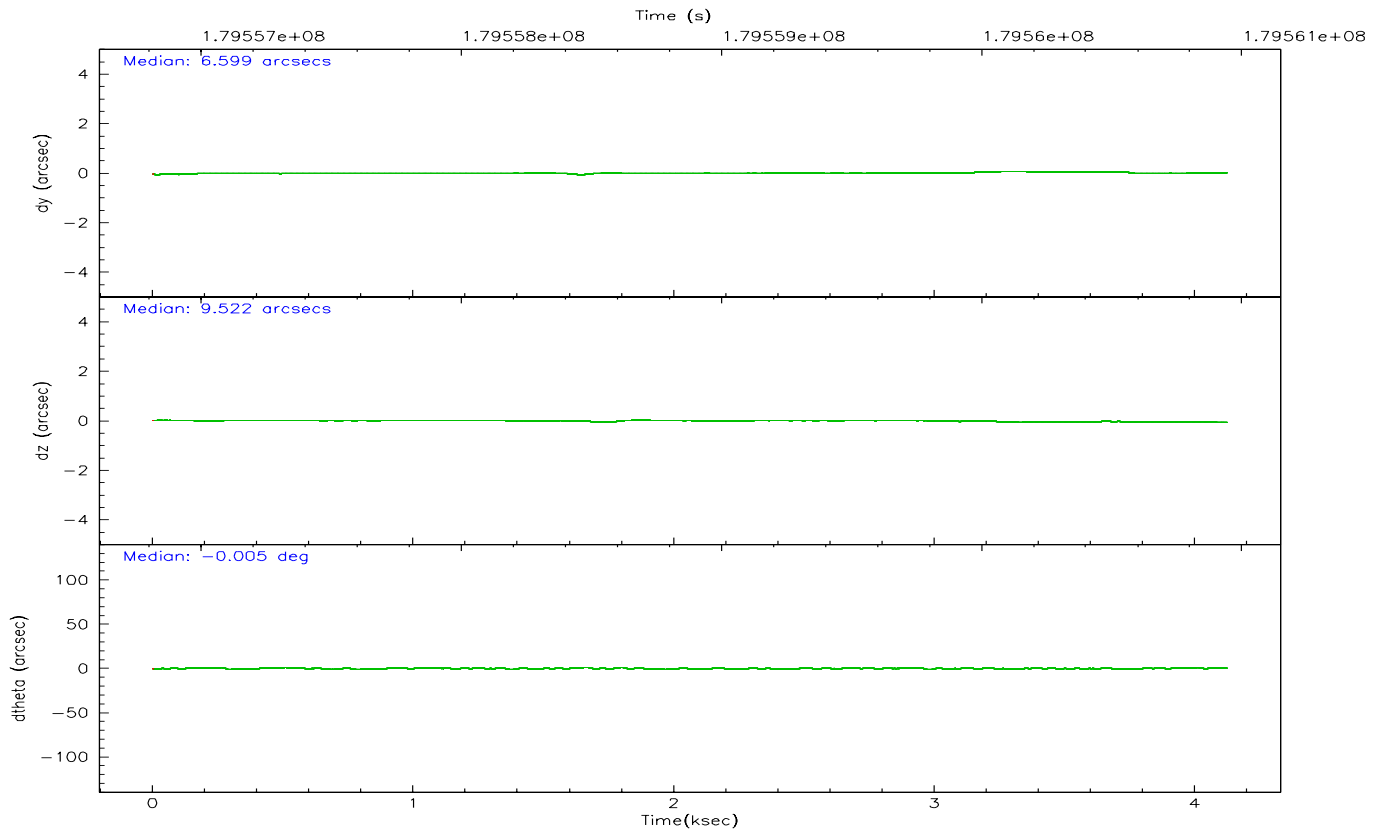
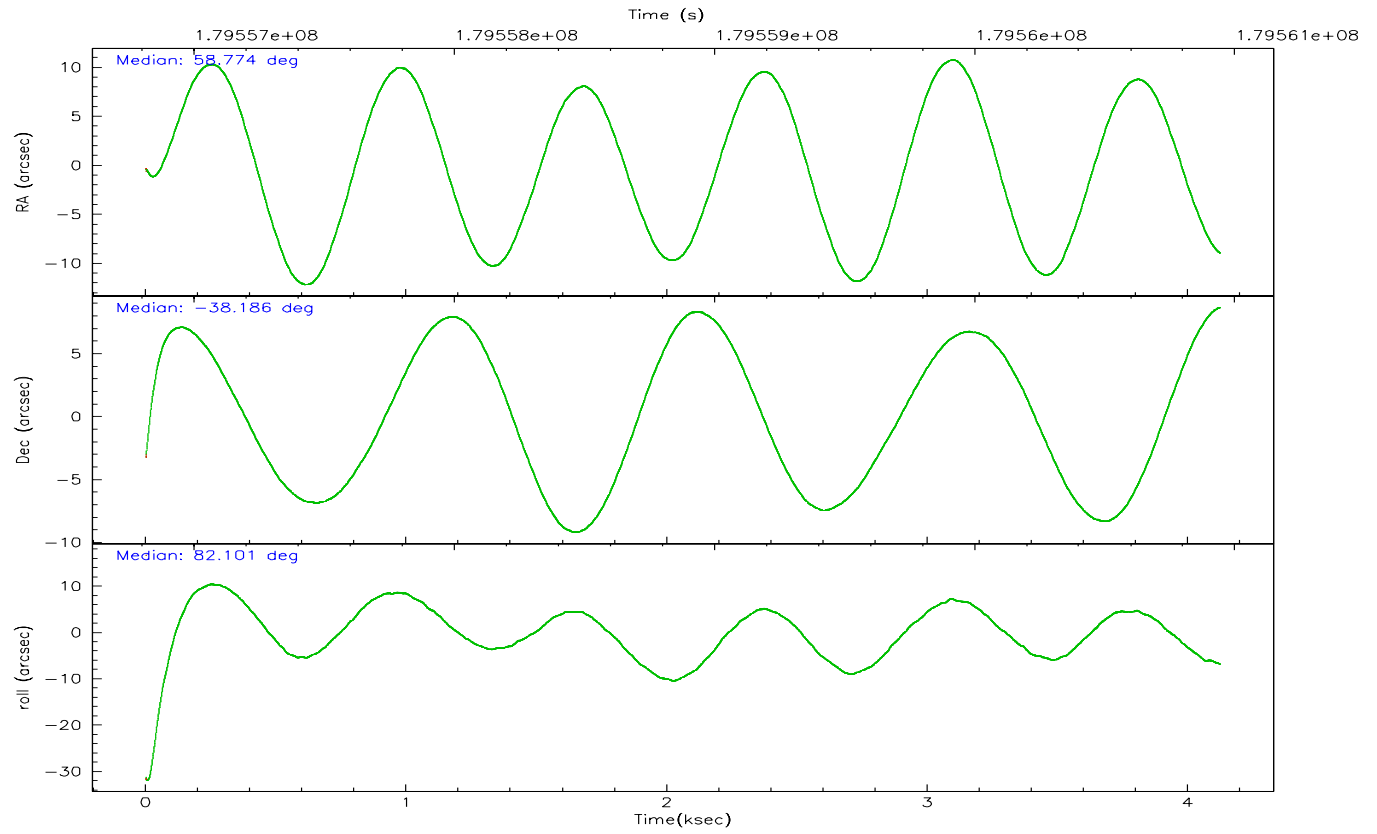
	ccd 2	ccd 3	ccd 5	ccd 6	ccd 7	ccd 8
grade 0 events	2123	2105	3008	2277	1774	3331
	7%	7%	6%	7%	3%	8%
grade 1 events	16	23	40	15	23	21
	0%	0%	0%	0%	0%	0%
grade 2 events	744	805	7749	855	5067	1763
	2%	2%	15%	2%	11%	4%
grade 3 events	325	350	702	345	1203	879
	1%	1%	1%	1%	2%	2%
grade 4 events	360	362	673	386	1229	876
	1%	1%	1%	1%	2%	2%
grade 5 events	1126	1281	2095	1265	2600	1668
	3%	4%	4%	4%	5%	4%
grade 6 events	570	636	13584	717	12437	2149
	1%	2%	27%	2%	27%	5%
grade 7 events	24367	22840	22229	22919	21572	26840
	82%	80%	44%	79%	46%	71%

2.2 Compared Parameters

Parameter	Planned	Actual	Parameter	Planned	Actual
Instrument	ACIS	ACIS	Obspar format version number	6	6
Detector	ACIS-235678	ACIS-235678	Obspar file type	PREDICTED	ACTUAL
Grating	NONE	NONE	Obspar update status	NONE	UPDATED
Data mode	FAINT	FAINT	On-chip summing requested	N	N
Observation mode	POINTING	POINTING	Subarray requested	NONE	NONE
Pointing RA	58.787697	58.77427790753659	Alternating exposures requested	N	N
Pointing Dec	-38.210978	-38.18587083280116	Primary exposure time	0.000000	3.2
Pointing Roll	81.957478	82.10572012250384			
SIM focus pos (mm)	-0.684267	-0.6828225247311905			
SIM defocus (mm)	0	0.001444936568705701			
SIM translation stage pos (mm)	-190.132523	-190.1400660498719			
SIM translation stage offset (mm)	0	0.00754346686406393			
Observation start time	179556987.184000	179555683.47701			
Observation start date	2003-09-10T04:55:23	2003-09-10T04:34:43			
Observation end time	179560942.184000	179561640.26476			
Observation end date	2003-09-10T06:01:18	2003-09-10T06:14:00			
Read mode	TIMED	TIMED			

2.3 Aspect



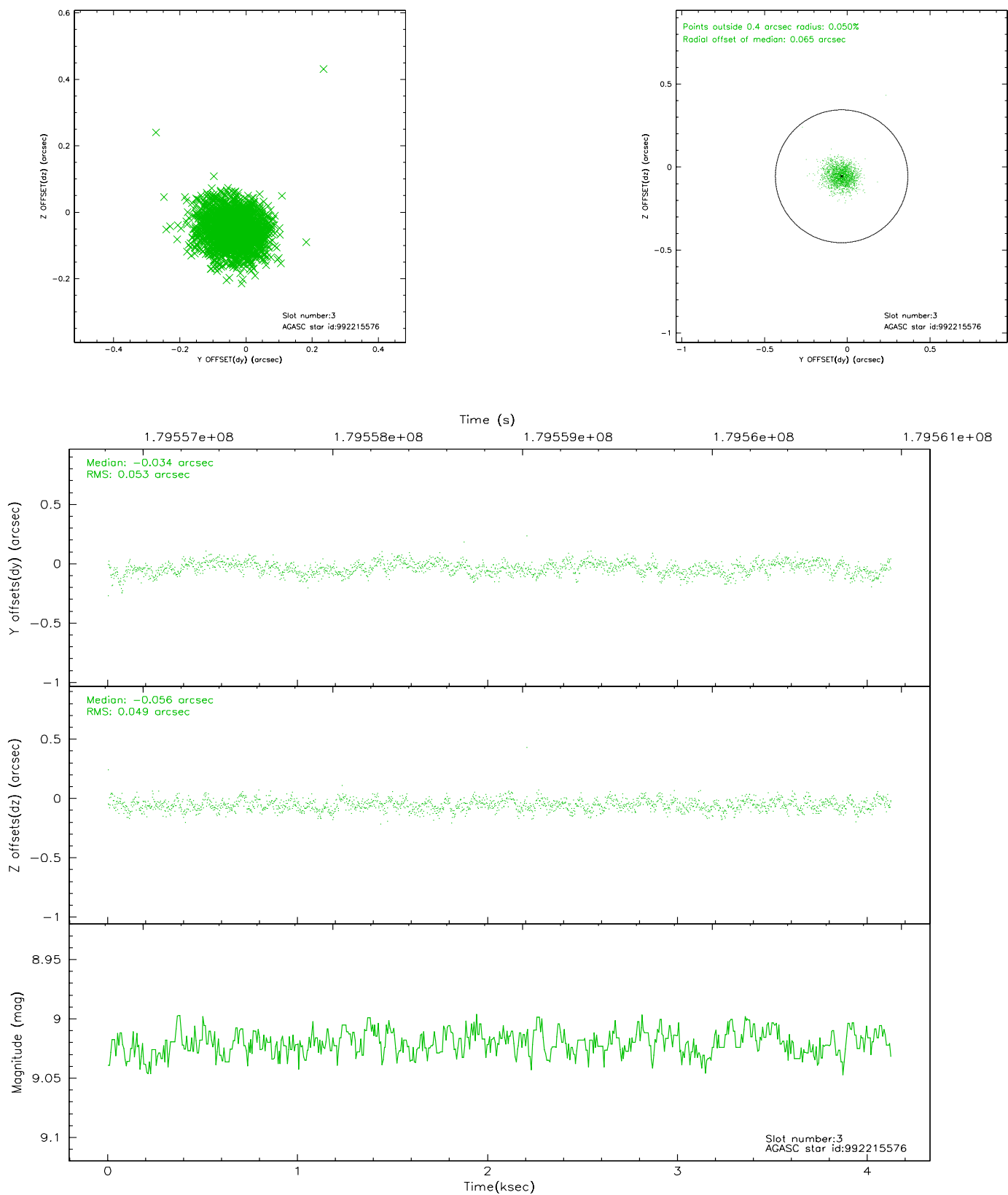


Slot Statistics

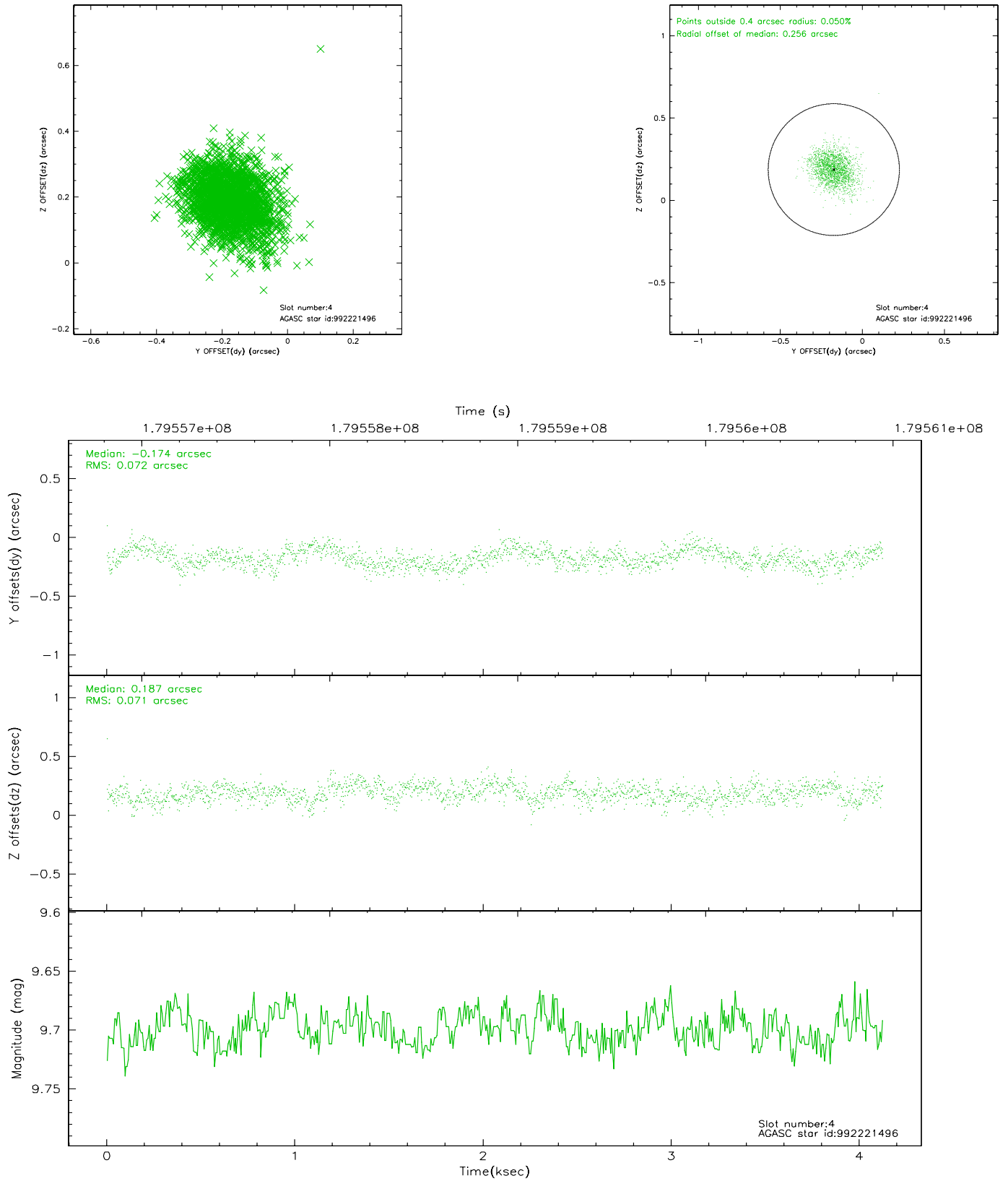
slot	status	id	mag	n_pts	med_dy	med_dz	dr1	dr2	ra	dec	mean_y	mean_z
0	FID	ACIS-S-2	7.10	1006	-0.039	-0.005	0.006	0.011	0.000000	0.000000	-759.36	-1730.76
1	FID	ACIS-S-4	7.20	1006	0.029	0.020	0.005	0.009	0.000000	0.000000	2153.28	176.22
2	FID	ACIS-S-5	7.23	1006	-0.021	-0.006	0.006	0.010	0.000000	0.000000	-1810.27	171.53
3	GUIDE	992215576	9.02	2012	-0.034	-0.056	0.076	0.121	58.263775	-37.940399	751.59	1608.65
4	GUIDE	992221496	9.70	2010	-0.174	0.187	0.106	0.172	59.501137	-38.031739	914.69	-1912.57
5	GUIDE	992224632	8.70	2010	0.018	-0.167	0.055	0.090	58.684868	-38.039040	572.47	374.47
6	GUIDE	992224824	9.63	2009	0.112	0.110	0.106	0.172	59.364292	-38.577221	-1082.92	-1791.47
7	GUIDE	992221736	9.33	2009	0.081	-0.073	0.076	0.131	58.628845	-38.842879	-2315.50	121.81

2.4 Star Slots

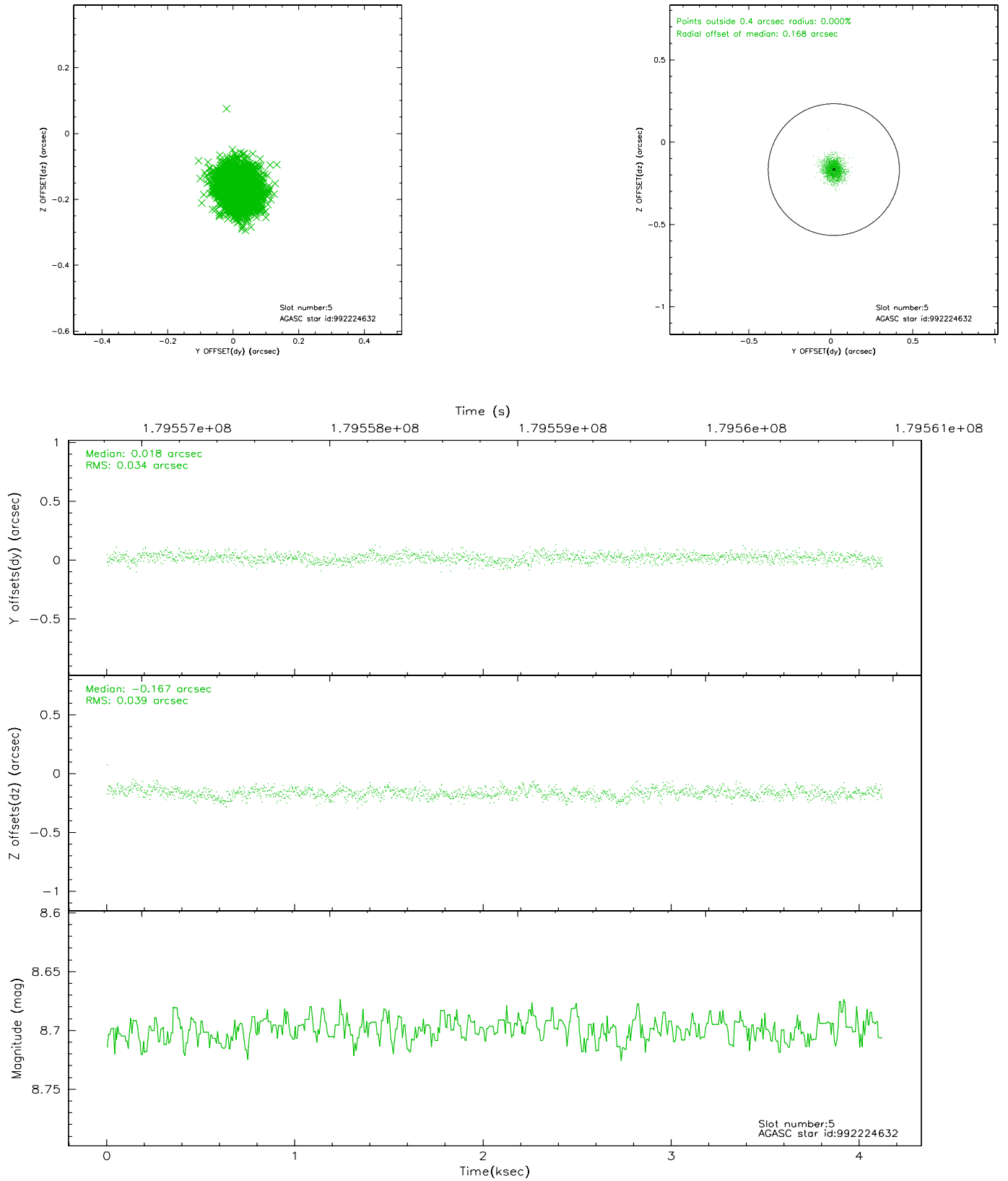
2.4.1 Slot 3



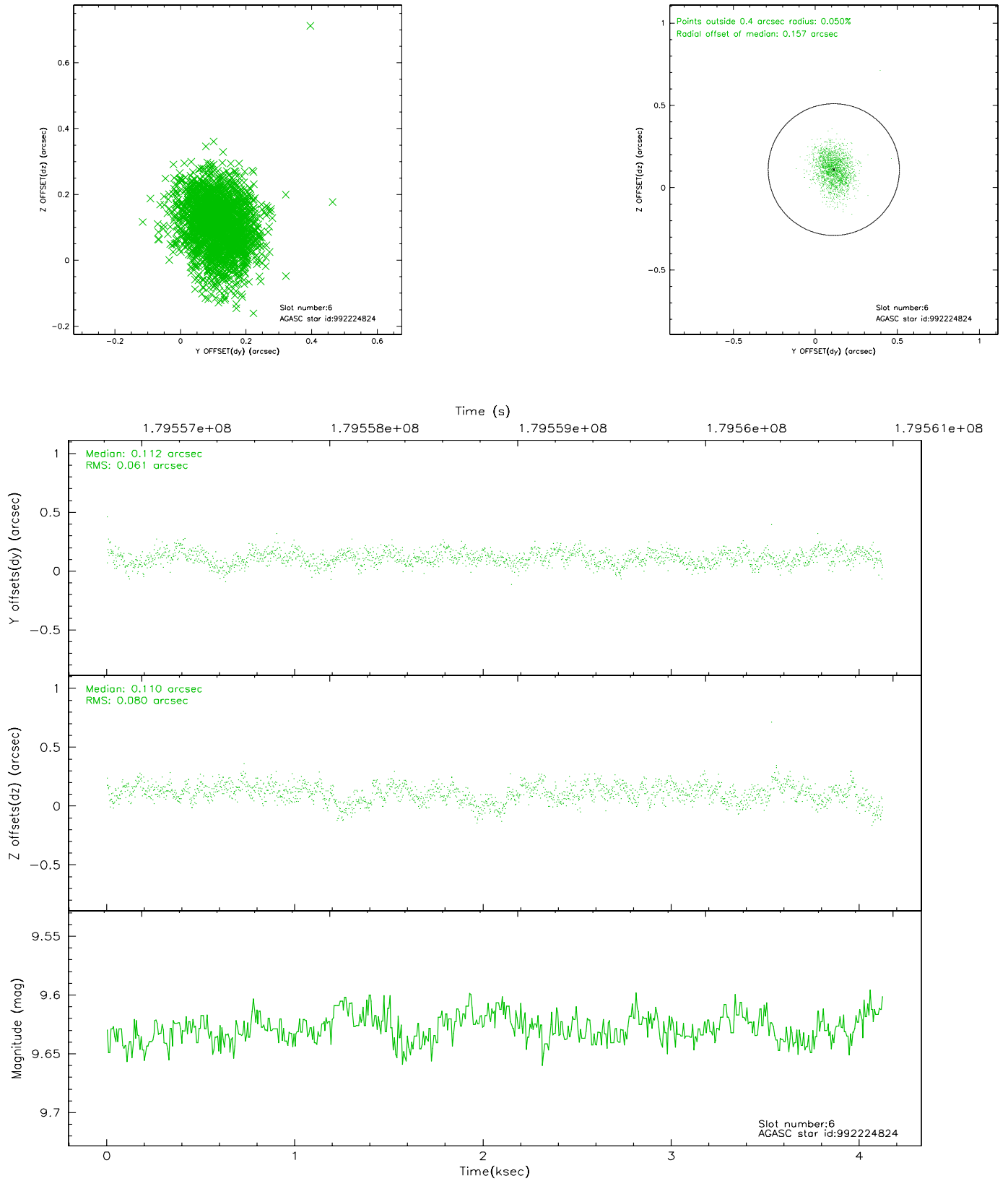
2.4.2 Slot 4



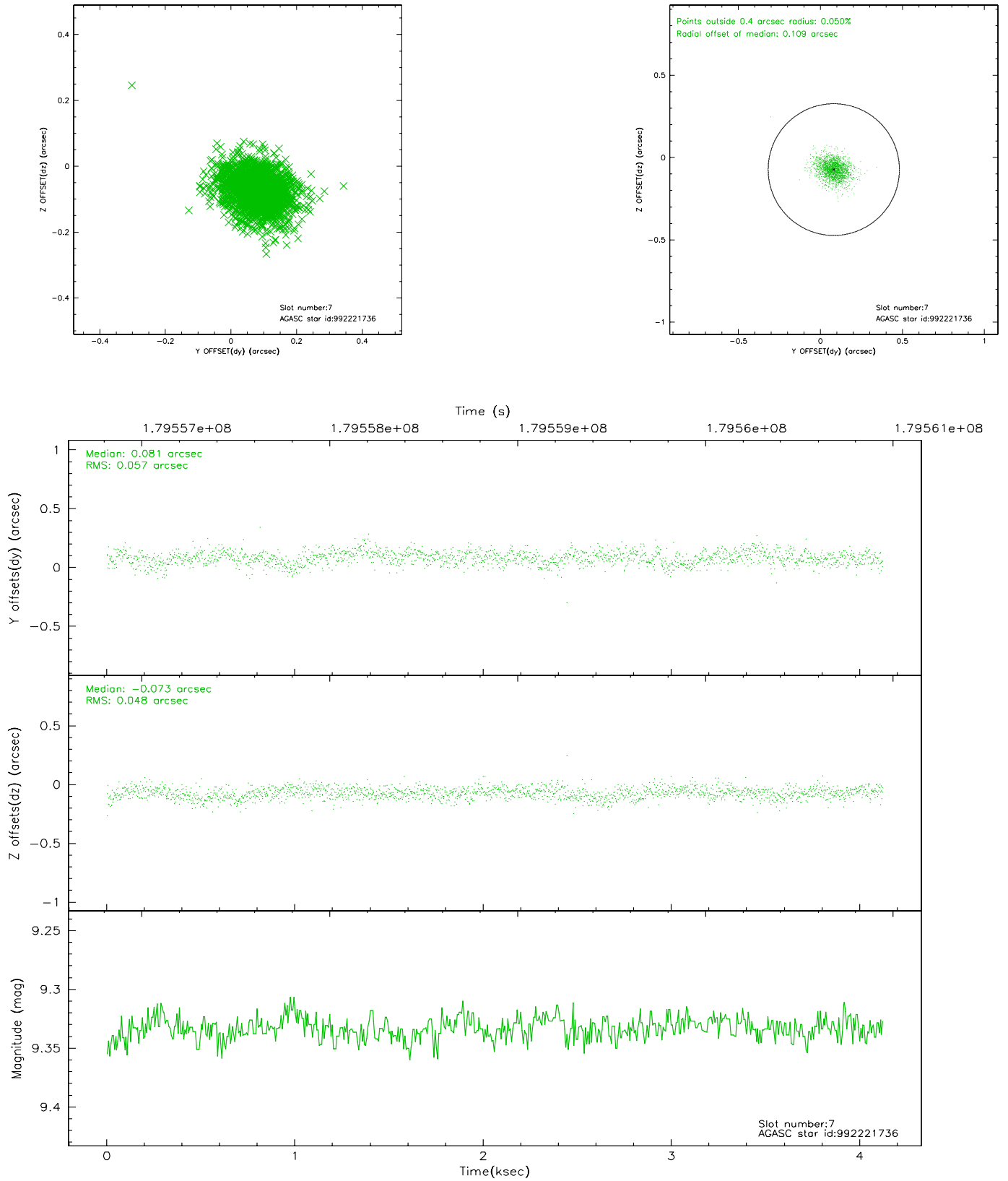
2.4.3 Slot 5



2.4.4 Slot 6

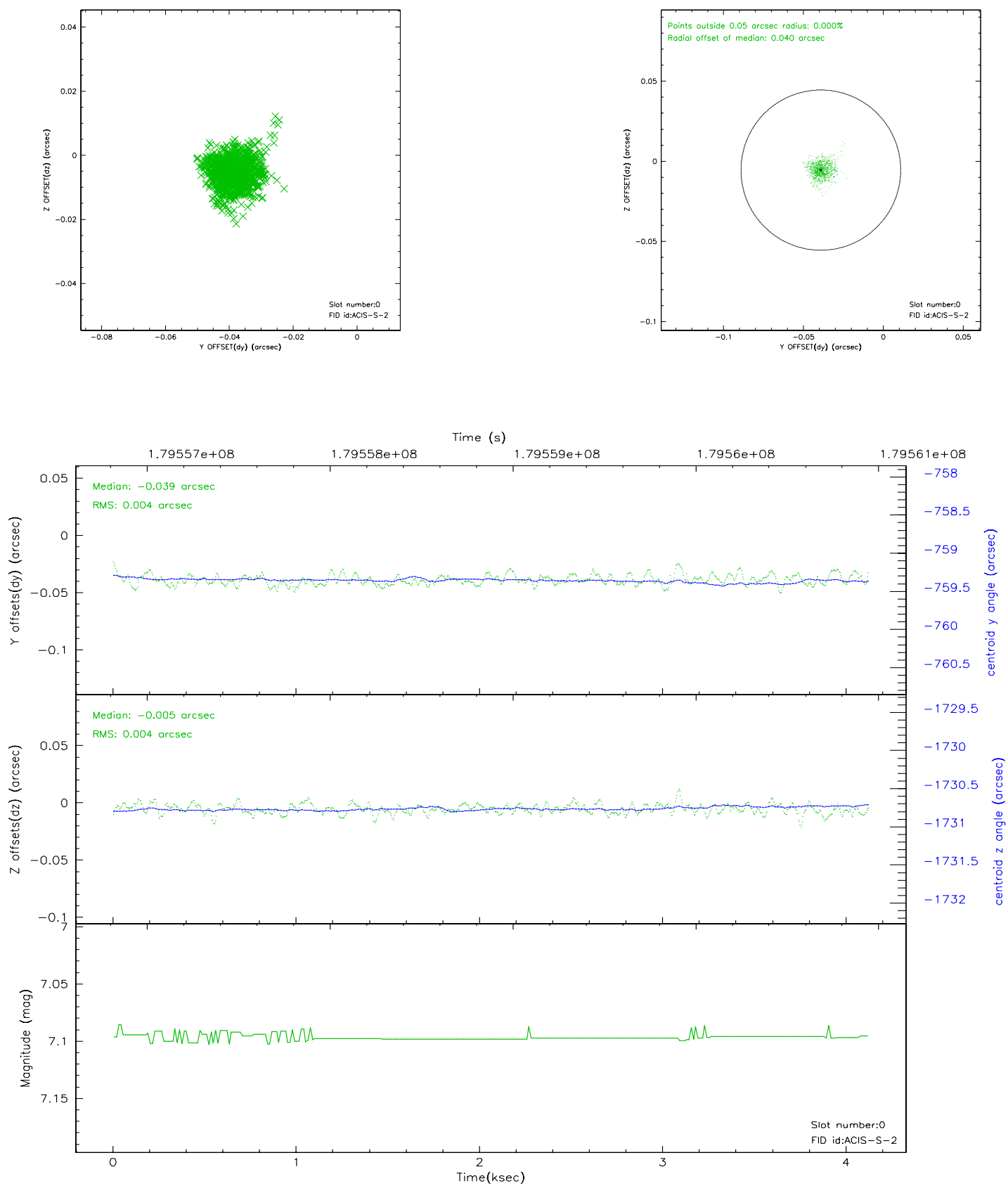


2.4.5 Slot 7

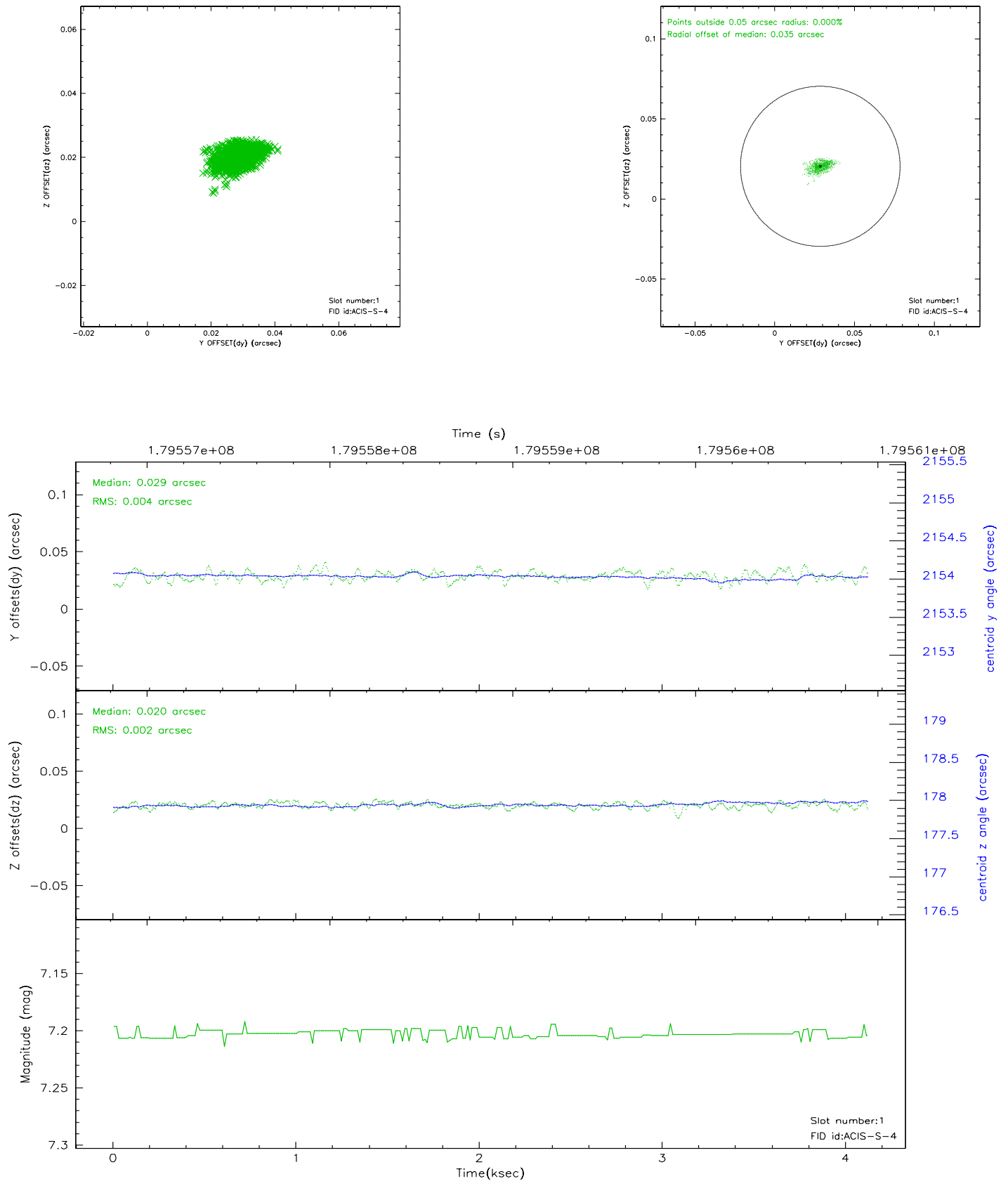


2.5 FID Slots

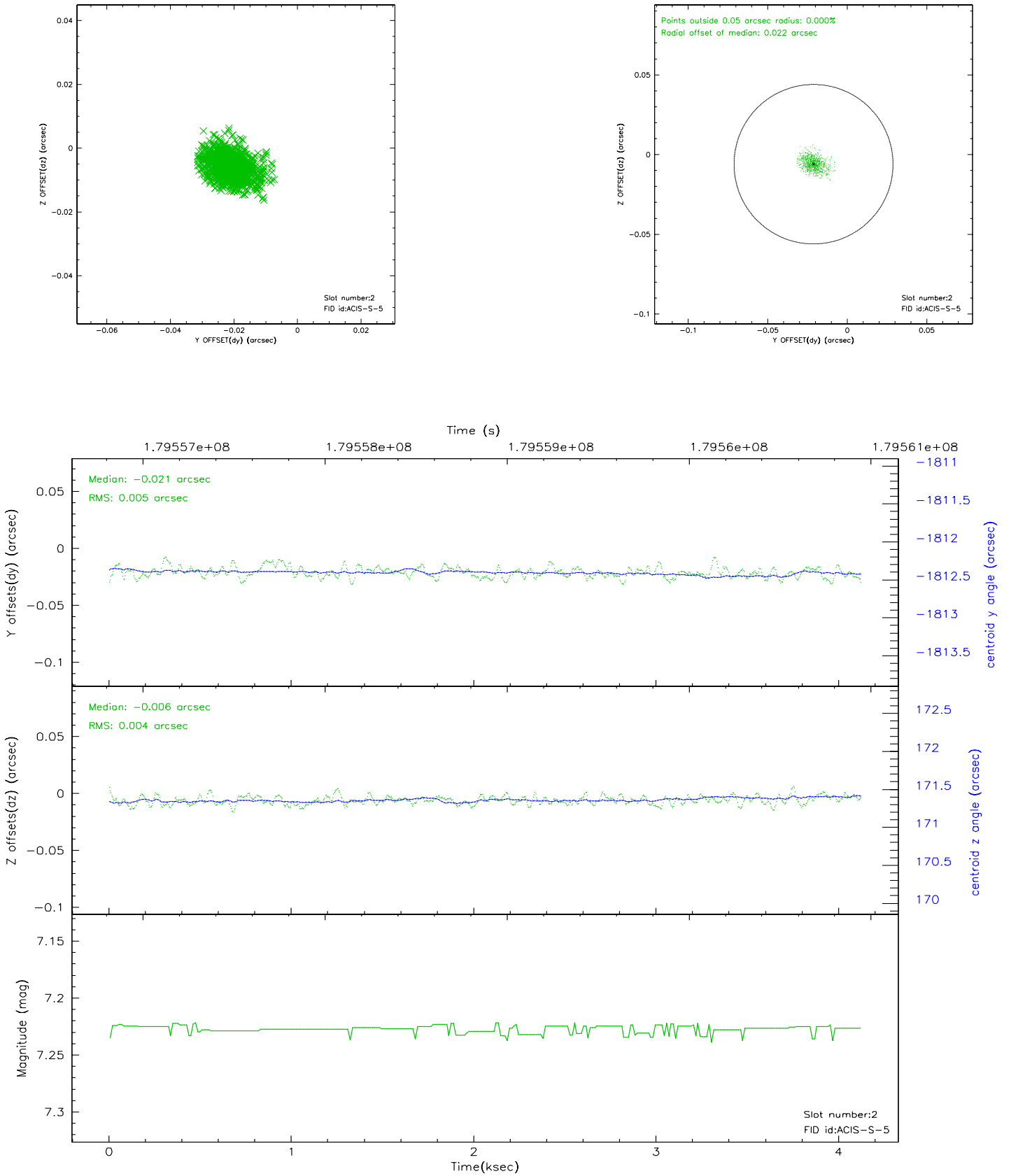
2.5.1 Slot 0



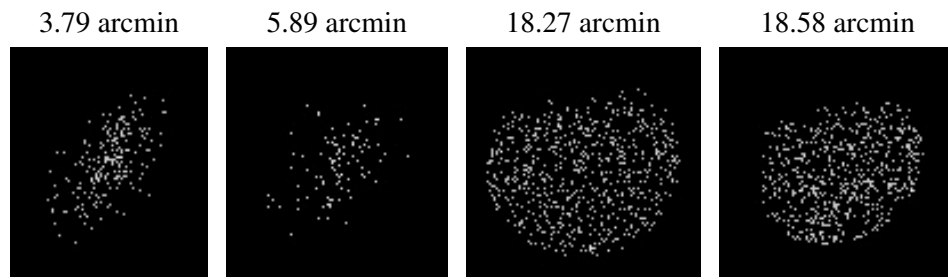
2.5.2 Slot 1



2.5.3 Slot 2



3 Point Sources



A Summary

A.1 Status

V&V Scientist	Beth Sundheim
V&V Date (YYYY-MM-DD)	2006.07.06
V&V Edition	1
V&V Disposition and Status	OK
V&V Charge Time	4.115

A.2 Comments