

V&V Reference Report

L2 ASCDS Version : 7.6.9

Observation 4051 - L2 Version 001
Chandra X-Ray Center

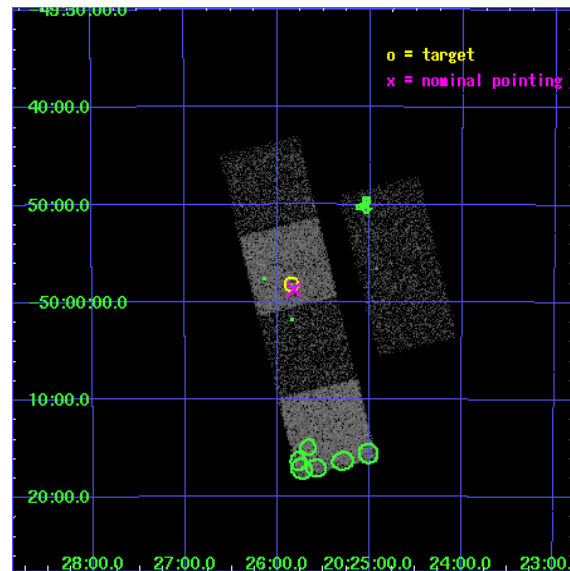
L2 Processing Date : Oct 22 2006

Contents

1	Front	2
2	OBI	3
2.1	OBI	3
2.1.1	Images	3
2.1.2	Bias	3
2.1.3	Parameters	4
2.1.4	Events	4
2.2	Compared Parameters	5
2.3	Aspect	6
2.4	Star Slots	9
2.4.1	Slot 3	9
2.4.2	Slot 5	10
2.4.3	Slot 6	11
2.4.4	Slot 7	12
2.5	FID Slots	13
2.5.1	Slot 0	13
2.5.2	Slot 1	14
2.5.3	Slot 2	15
3	Point Sources	16
A	Summary	17
A.1	Status	17
A.2	Comments	17

1 Front

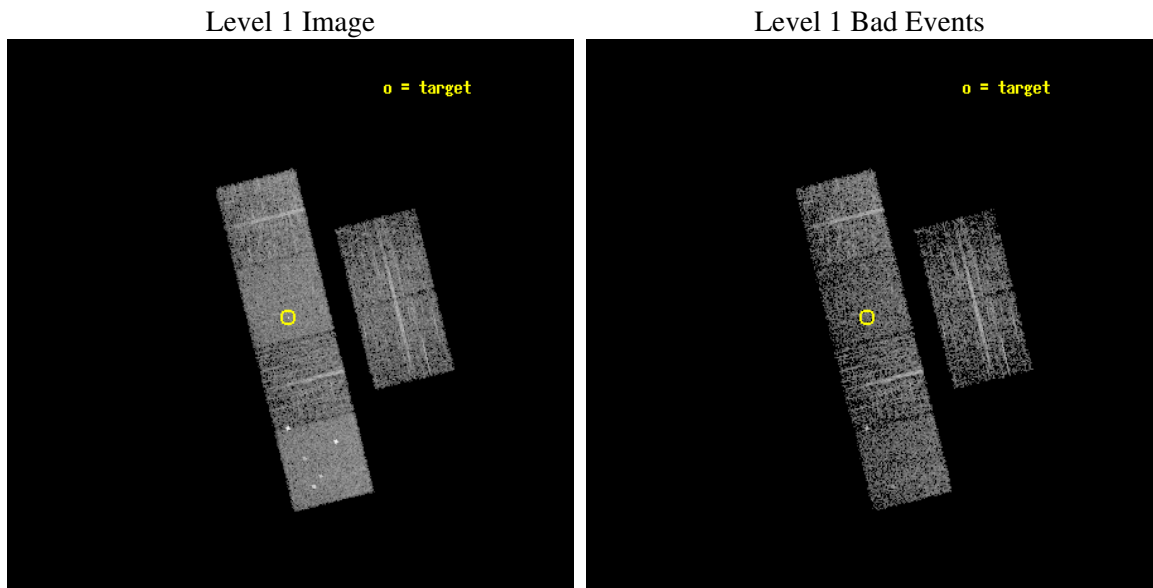
seq_num	700730
obs_id	4051
title	WHY DO WE SEE BROAD LINES IN X-RAY ABSORBED AGN?
observer	Dr. BELINDA WILKES
object	2MASS202551-495813
dtcycle	0
cycle	P
ra_targ	306.46125
dec_targ	-49.970222
ra_nom	306.45525933997
dec_nom	-49.978882861525
roll_nom	256.06388716545
revision	3
ontime	3055.9999886155
livetime	3017.3030766574
ontime2	3055.9999886155
ontime3	3055.9999886155
ontime5	3055.9999886155
ontime6	3055.9999886155
ontime7	3055.9999886155
ontime8	3052.7590183318
l2events	31944



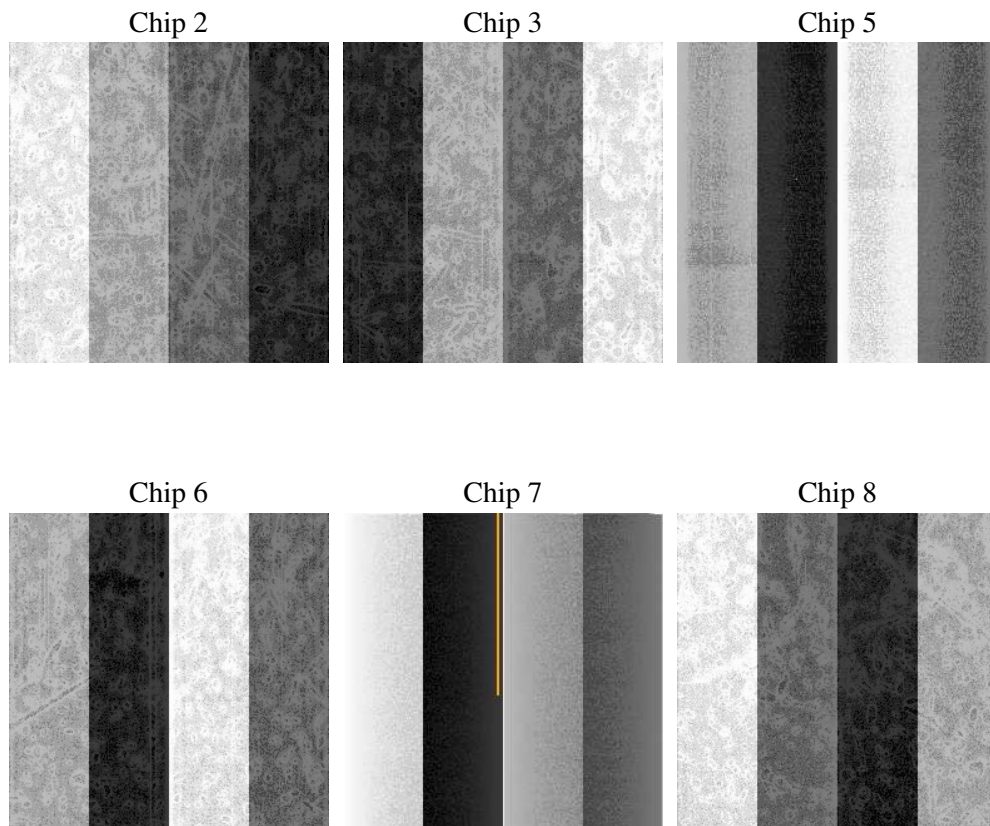
2 OBI

2.1 OBI

2.1.1 Images



2.1.2 Bias



2.1.3 Parameters

obi_num	0
ascdsver	7.6.9
caldsver	3.2.3
date	2006-10-22T17:06:50
revision	3

sched_exp_time	3300.000000
ontime	3062.745297581
ontime2	3062.745297581
ontime3	3062.745297581
ontime5	3062.745297581
ontime6	3062.745297581
ontime7	3062.745297581
ontime8	3059.5042376518
l1events	142689

2.1.4 Events

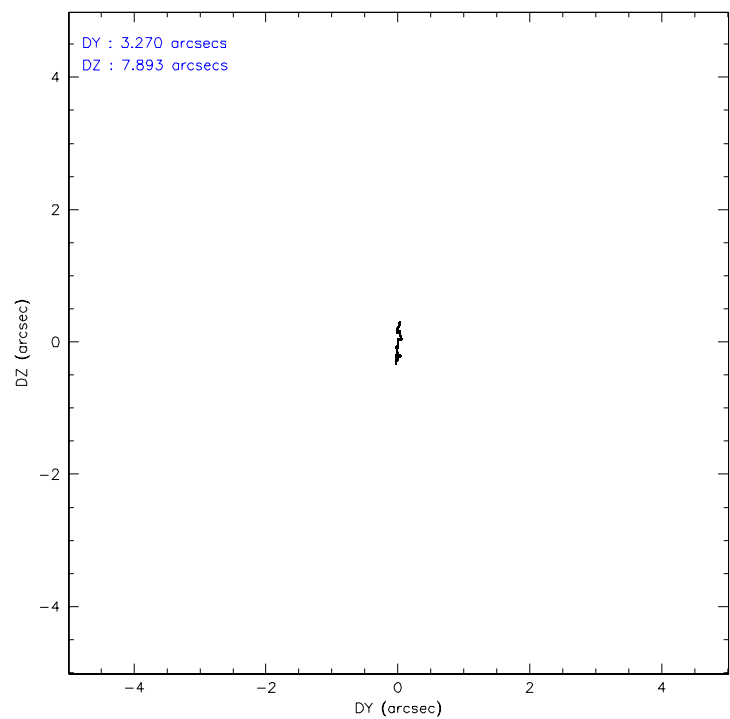
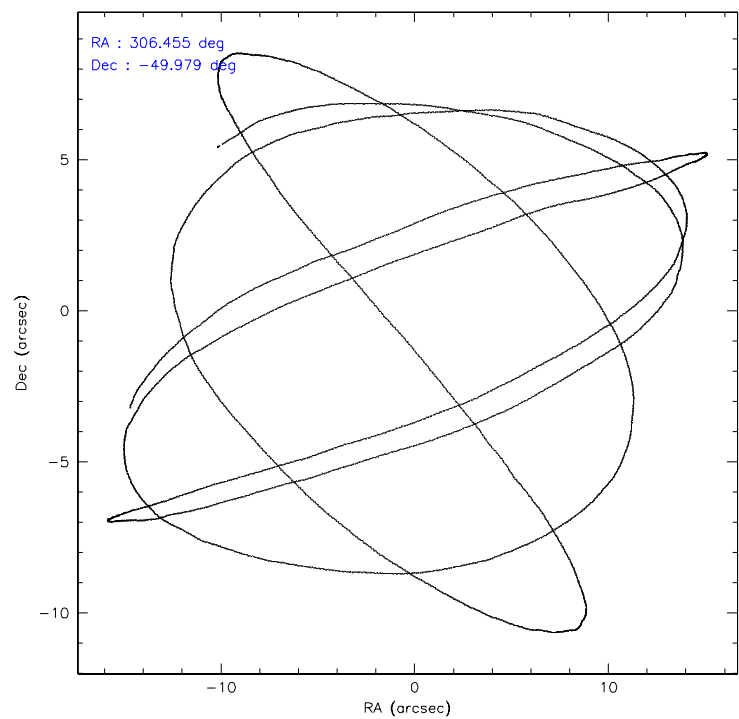
	ccd 2	ccd 3	ccd 5	ccd 6	ccd 7	ccd 8
level 1 events	19444	18216	31575	19725	26690	27039
rejected events	17179	16010	16196	17348	15511	22203
rejected %	88%	87%	51%	87%	58%	82%

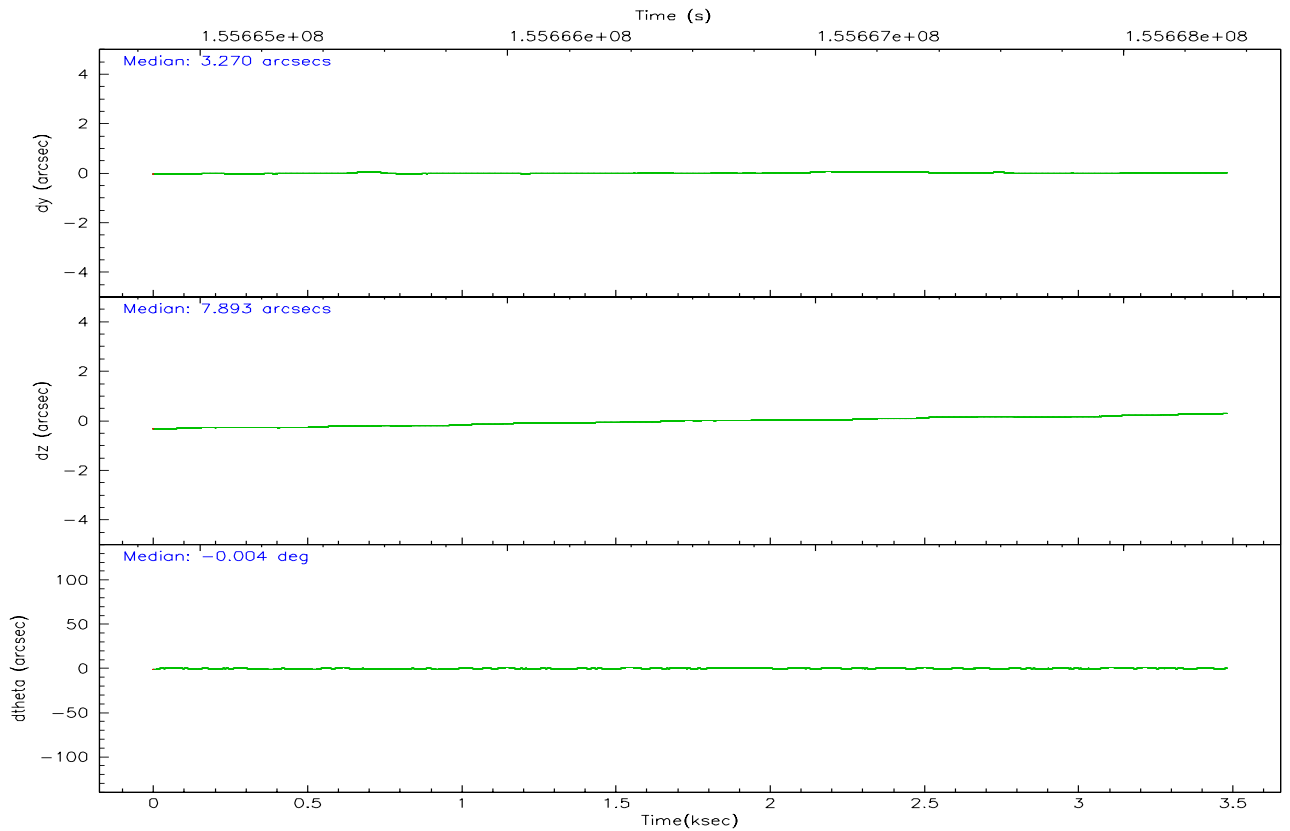
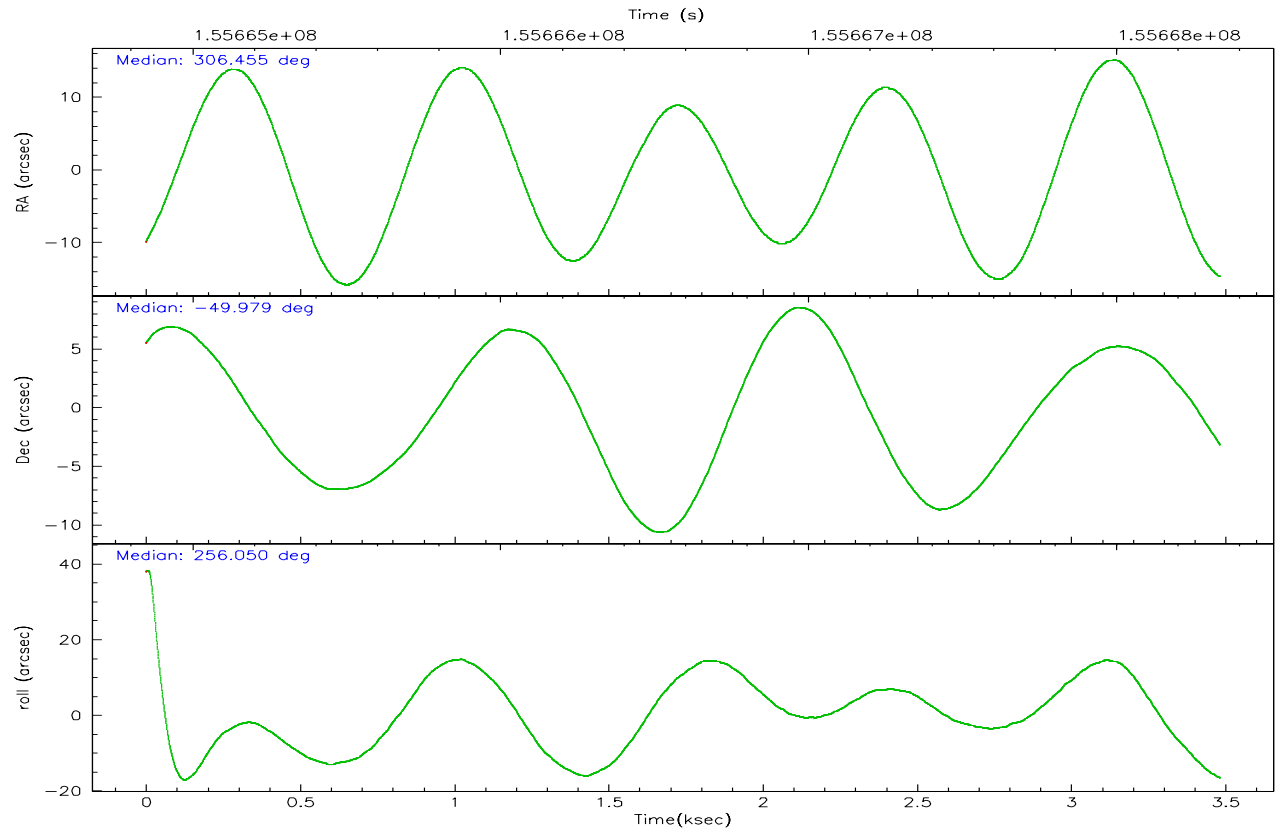
	ccd 2	ccd 3	ccd 5	ccd 6	ccd 7	ccd 8
grade 0 events	1042	1030	2271	1026	889	1557
	5%	5%	7%	5%	3%	5%
grade 1 events	9	12	65	5	22	25
	0%	0%	0%	0%	0%	0%
grade 2 events	427	377	4664	461	2721	1083
	2%	2%	14%	2%	10%	4%
grade 3 events	233	215	361	229	648	491
	1%	1%	1%	1%	2%	1%
grade 4 events	208	218	338	239	577	459
	1%	1%	1%	1%	2%	1%
grade 5 events	735	824	1481	863	1699	1070
	3%	4%	4%	4%	6%	3%
grade 6 events	360	371	7774	425	6370	1248
	1%	2%	24%	2%	23%	4%
grade 7 events	16430	15169	14621	16477	13764	21106
	84%	83%	46%	83%	51%	78%

2.2 Compared Parameters

Parameter	Planned	Actual	Parameter	Planned	Actual
Instrument	ACIS	ACIS	Obspar format version number	6	6
Detector	ACIS-235678	ACIS-235678	Obspar file type	PREDICTED	ACTUAL
Grating	NONE	NONE	Obspar update status	NONE	UPDATED
Data mode	FAINT	FAINT	Number of optional ACIS chips dropped	0	0
Observation mode	POINTING	POINTING	On-chip summing requested	N	N
Pointing RA	306.442867	306.4552593399716	Subarray requested	NONE	NONE
Pointing Dec	-49.952997	-49.97888286152545	Alternating exposures requested	N	N
Pointing Roll	255.897499	256.0638871654532	Primary exposure time	0.000000	3.2
SIM focus pos (mm)	-0.684267	-0.6828225247311905			
SIM defocus (mm)	0	0.001444936568705701			
SIM translation stage pos (mm)	-190.132523	-190.1400660498719			
SIM translation stage offset (mm)	0	0.00754346686406393			
Observation start time	155665030.184000	155664466.37954			
Observation start date	2002-12-07T16:16:06	2002-12-07T16:07:46			
Observation end time	155668330.184000	155669155.24223			
Observation end date	2002-12-07T17:11:06	2002-12-07T17:25:55			
Read mode	TIMED	TIMED			

2.3 Aspect



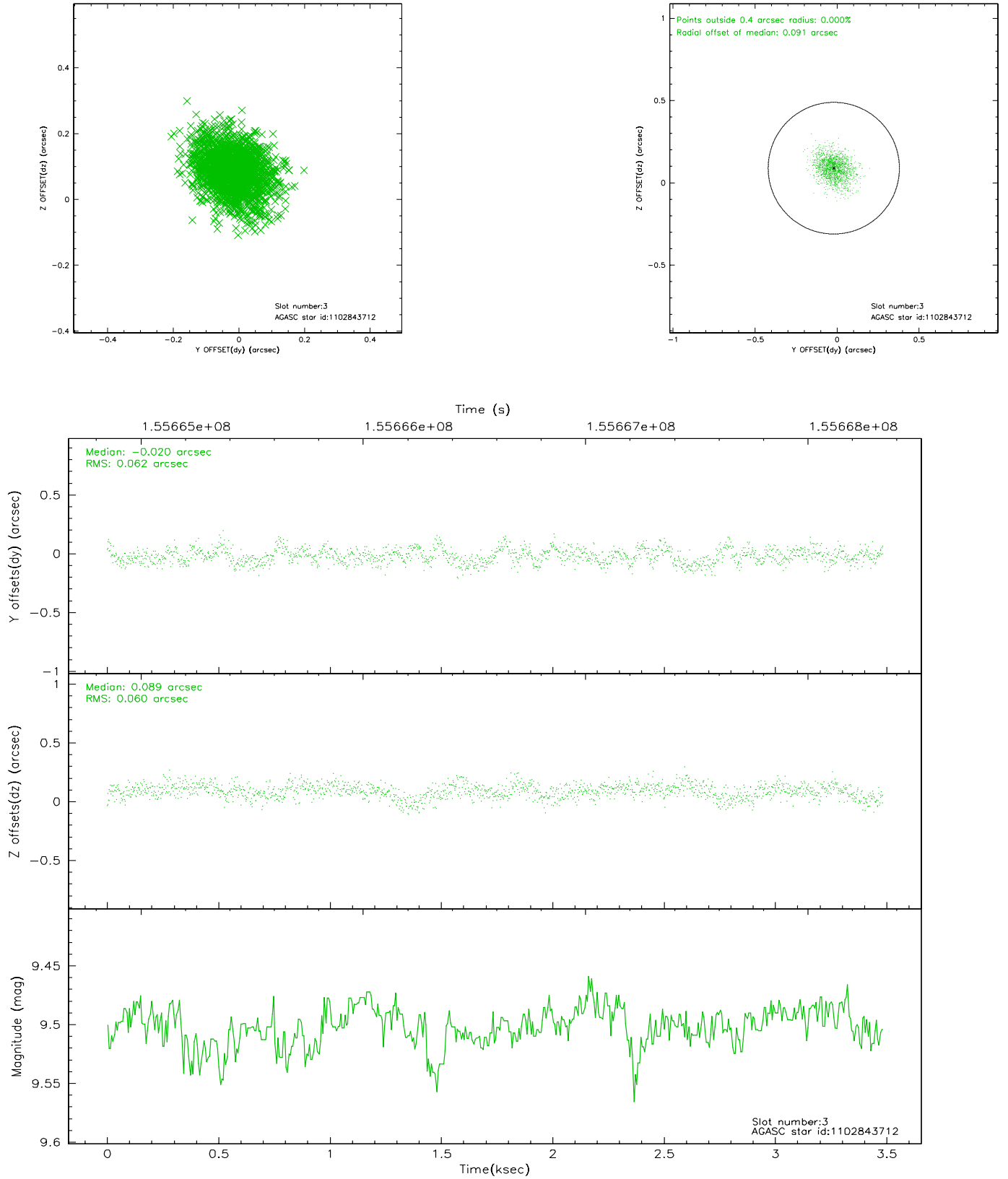


Slot Statistics

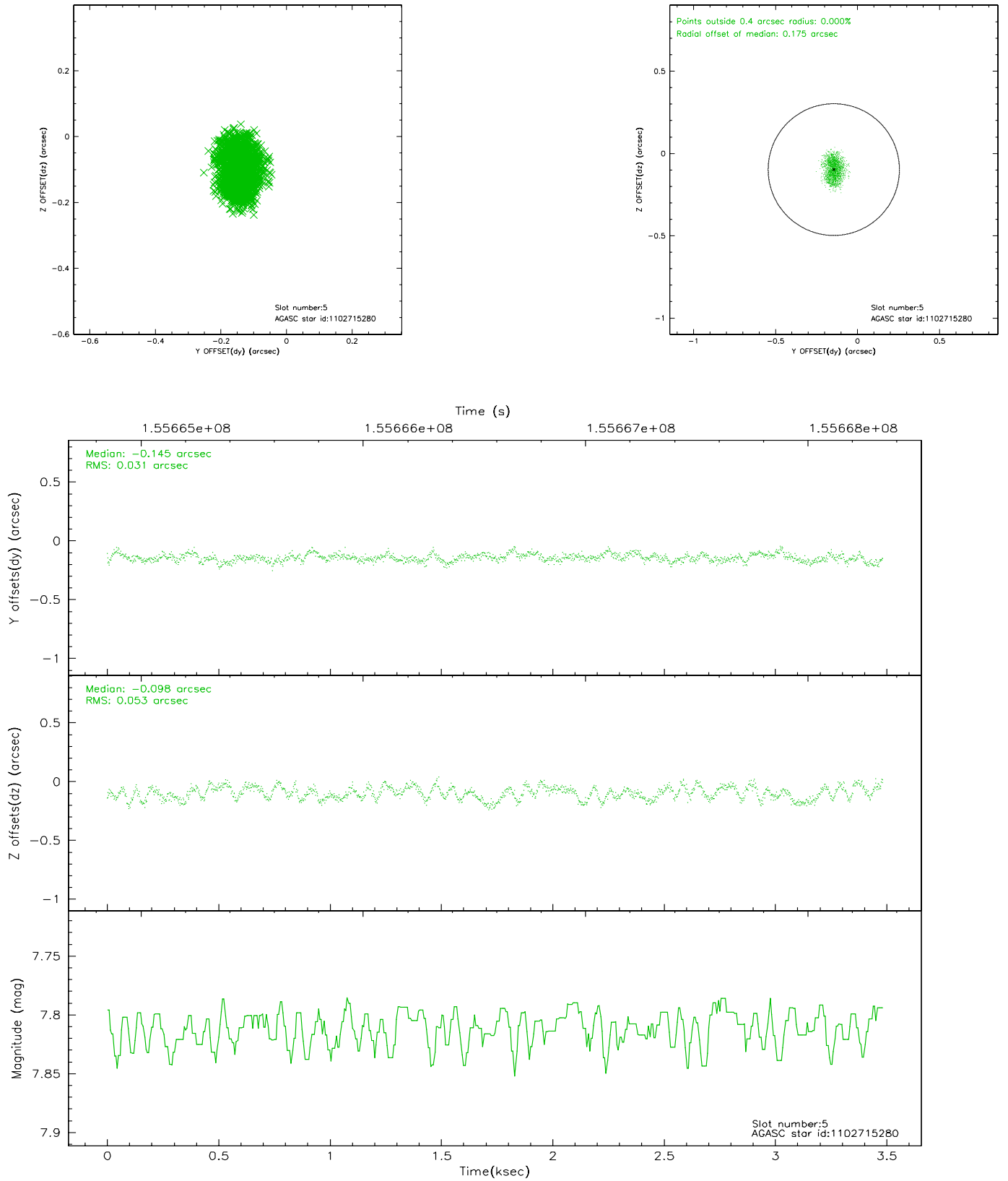
slot	status	id	mag	n_pts	med_dy	med_dz	dr1	dr2	ra	dec	mean_y	mean_z
0	FID	ACIS-S-2	7.11	850	0.001	0.011	0.007	0.011	0.000000	0.000000	-755.93	-1729.04
1	FID	ACIS-S-4	7.20	850	-0.032	-0.003	0.005	0.009	0.000000	0.000000	2156.50	177.53
2	FID	ACIS-S-5	7.24	850	-0.000	0.001	0.007	0.011	0.000000	0.000000	-1806.43	173.30
3	GUIDE	1102843712	9.50	1699	-0.020	0.089	0.091	0.151	307.033930	-49.840958	-720.33	1233.61
4	OMITTED		0.00	0	0.000	0.000	0.000	0.000	0.000000	0.000000	0.00	0.00
5	GUIDE	1102715280	7.81	1700	-0.145	-0.098	0.067	0.100	305.571166	-49.447659	-1255.43	-2419.07
6	GUIDE	1102723544	9.78	1698	0.187	-0.029	0.115	0.187	305.922325	-49.780883	-301.98	-1325.27
7	GUIDE	1102845160	8.83	1698	-0.026	0.041	0.097	0.144	307.361187	-49.782952	-1101.49	1923.07

2.4 Star Slots

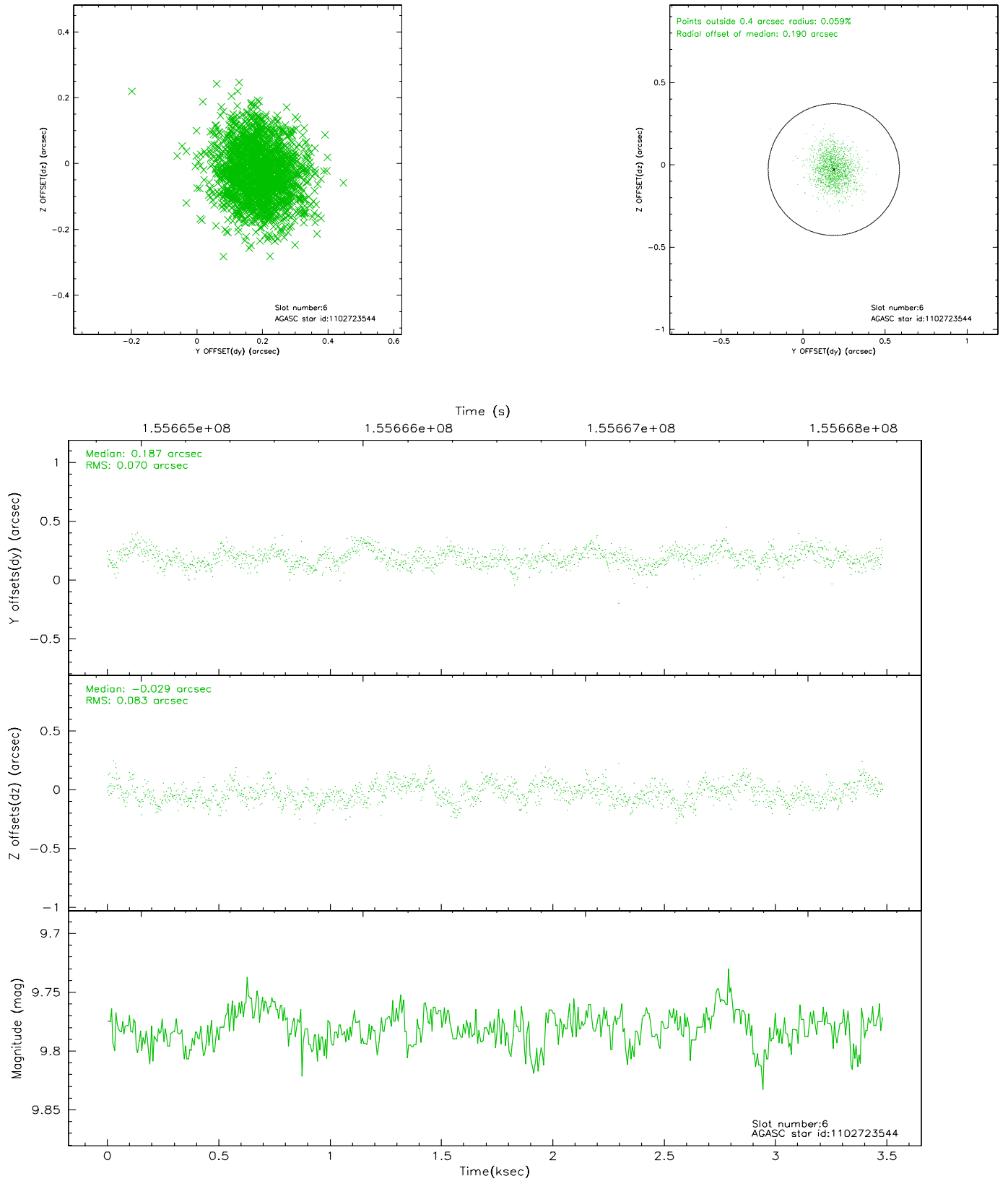
2.4.1 Slot 3



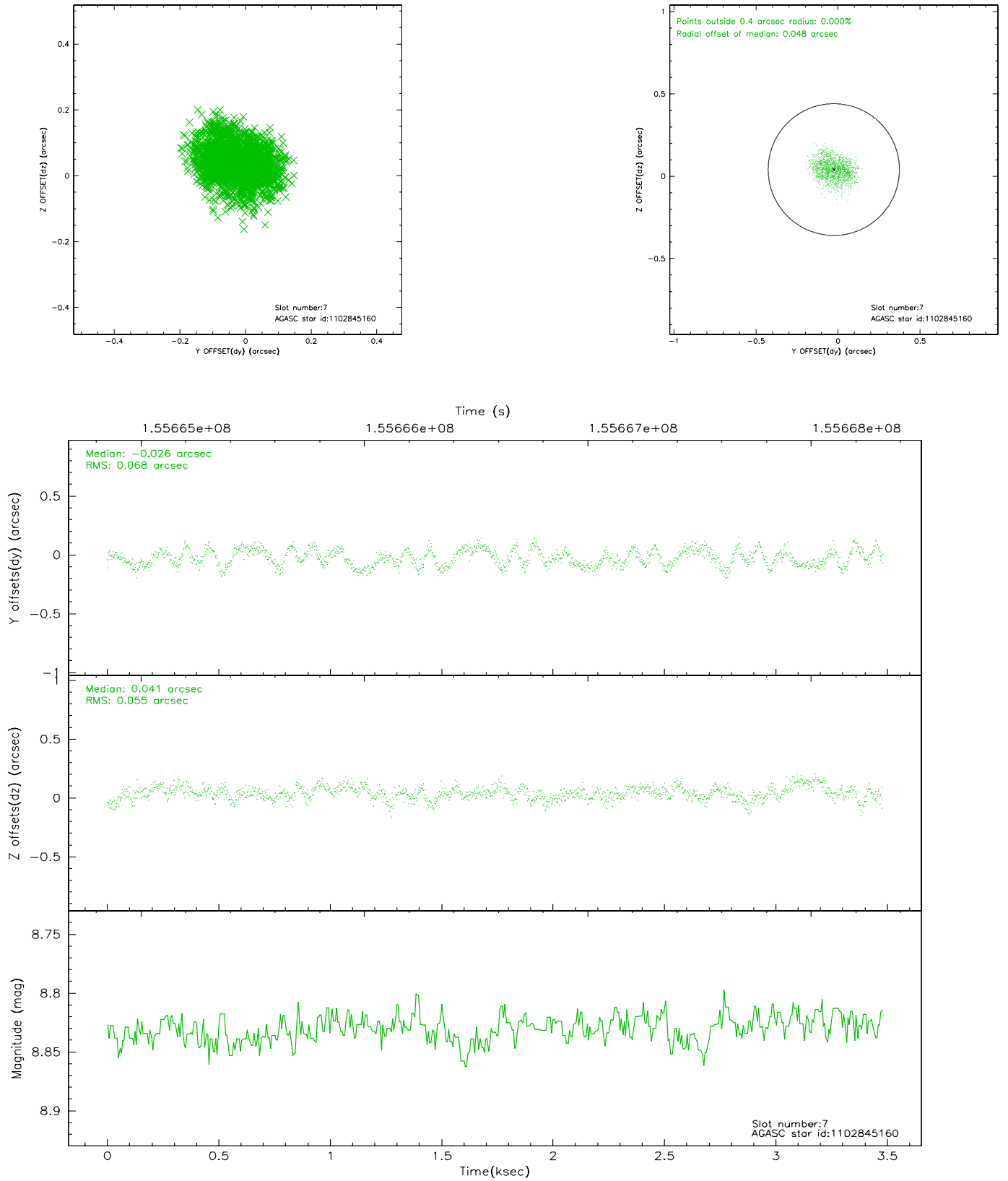
2.4.2 Slot 5



2.4.3 Slot 6

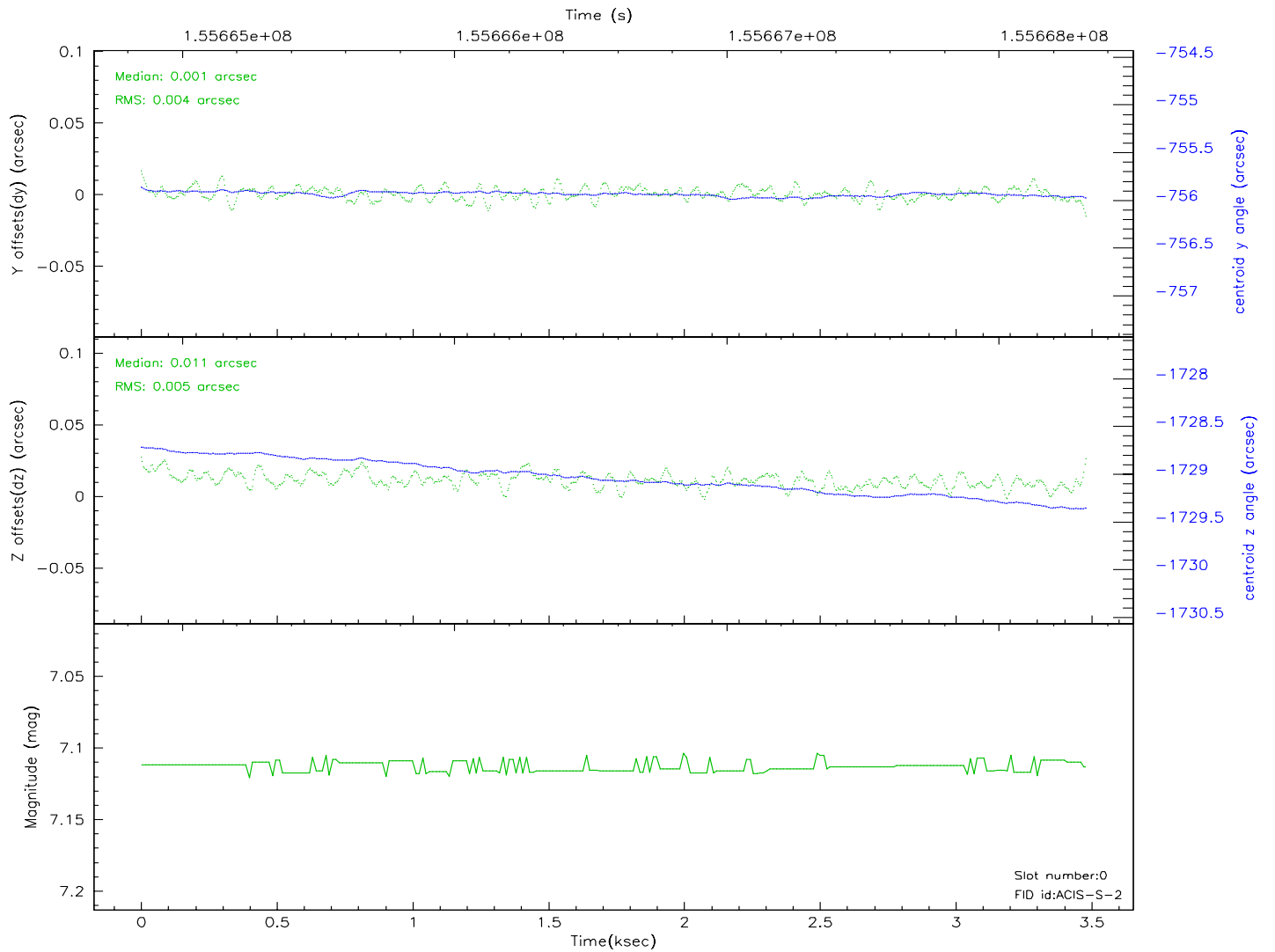
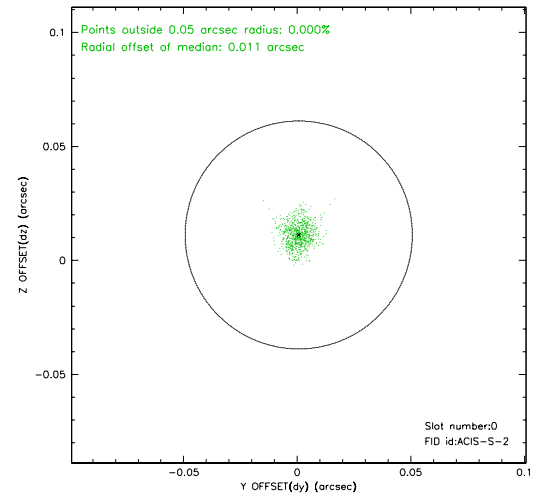
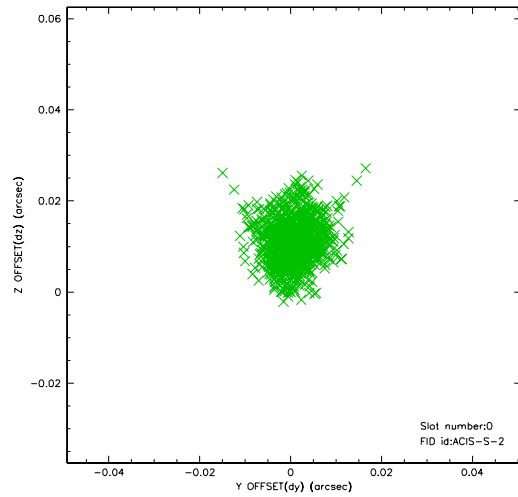


2.4.4 Slot 7

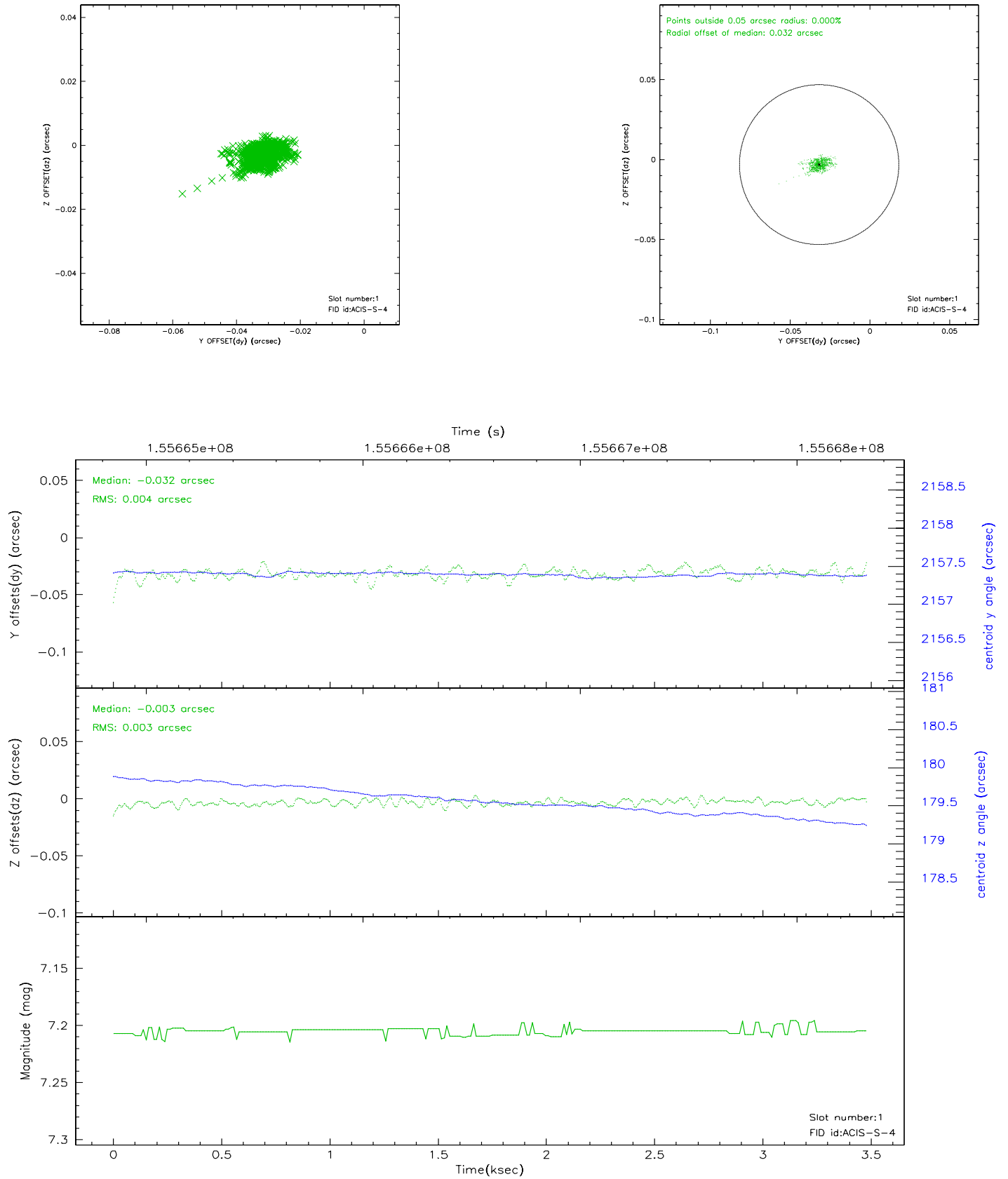


2.5 FID Slots

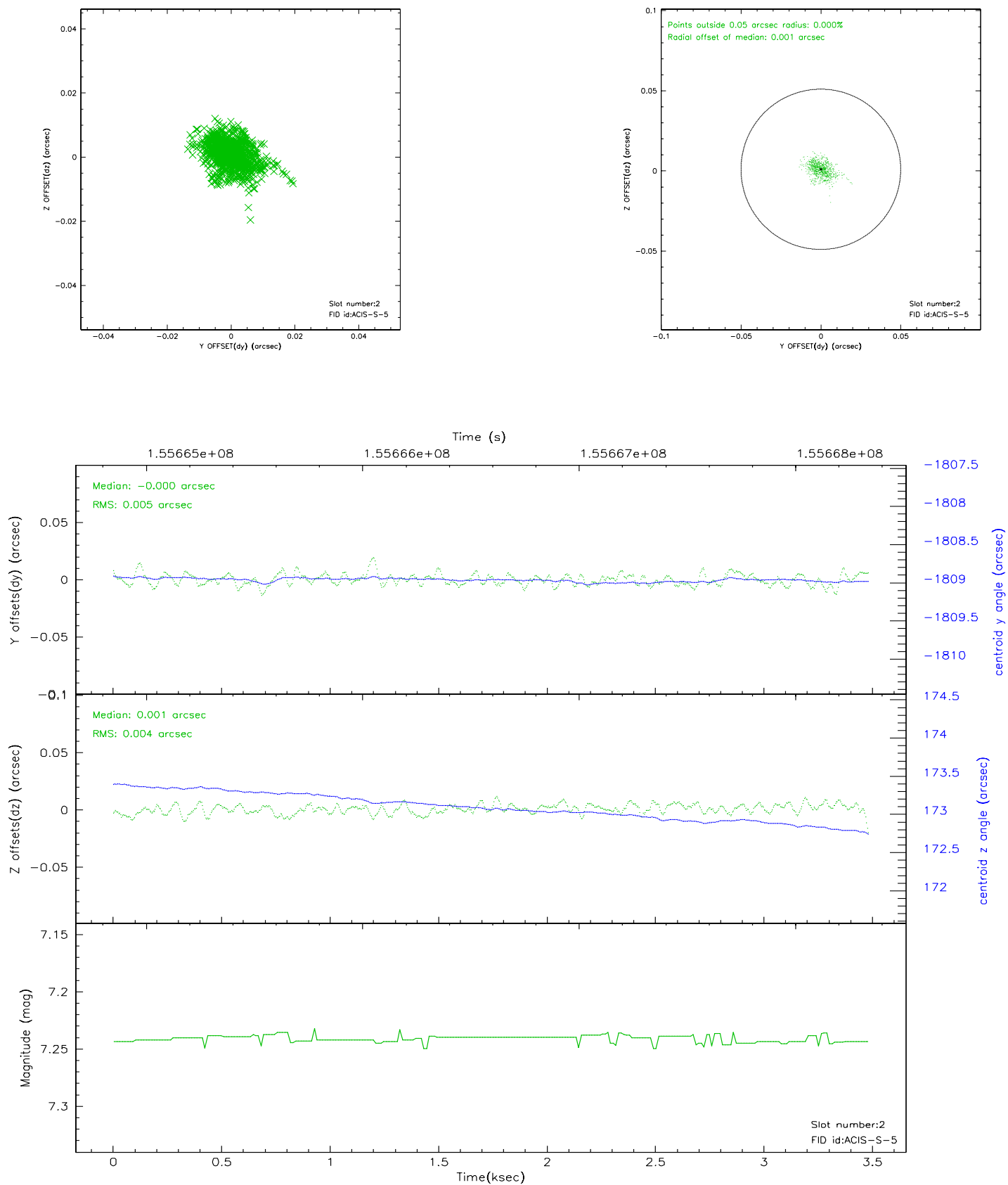
2.5.1 Slot 0



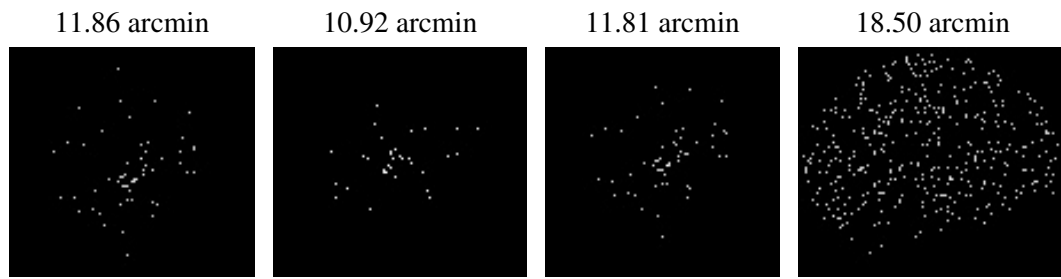
2.5.2 Slot 1



2.5.3 Slot 2



3 Point Sources



A Summary

A.1 Status

V&V Scientist	Beth Sundheim
V&V Date (YYYY-MM-DD)	2010.10.01
V&V Edition	2
V&V Disposition and Status	OK
V&V Charge Time	3.059

A.2 Comments

The guide star in slot 4 was manually excluded from the processing due to poor data quality.