

V&V Reference Report

L2 ASCDS Version : 7.6.9

Observation 4041 - L2 Version 001
Chandra X-Ray Center

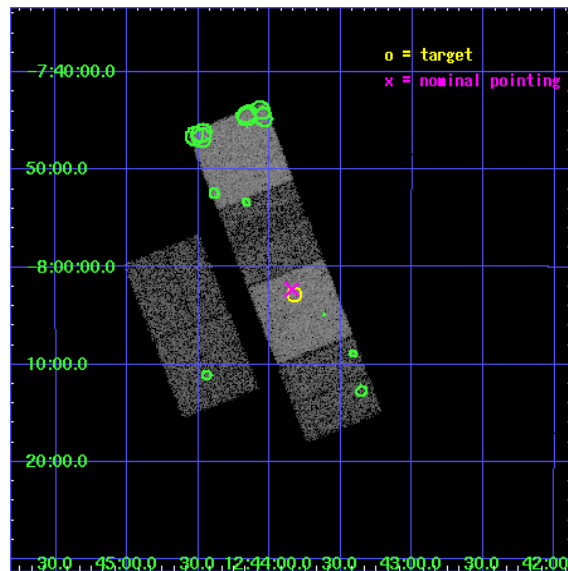
L2 Processing Date : Oct 14 2006

Contents

1	Front	2
2	OBI	3
2.1	OBI	3
2.1.1	Images	3
2.1.2	Bias	3
2.1.3	Parameters	4
2.1.4	Events	4
2.2	Compared Parameters	5
2.3	Aspect	6
2.4	Star Slots	9
2.4.1	Slot 3	9
2.4.2	Slot 4	10
2.4.3	Slot 5	11
2.4.4	Slot 6	12
2.4.5	Slot 7	13
2.5	FID Slots	14
2.5.1	Slot 0	14
2.5.2	Slot 1	15
2.5.3	Slot 2	16
3	Point Sources	17
A	Summary	18
A.1	Status	18
A.2	Comments	18

1 Front

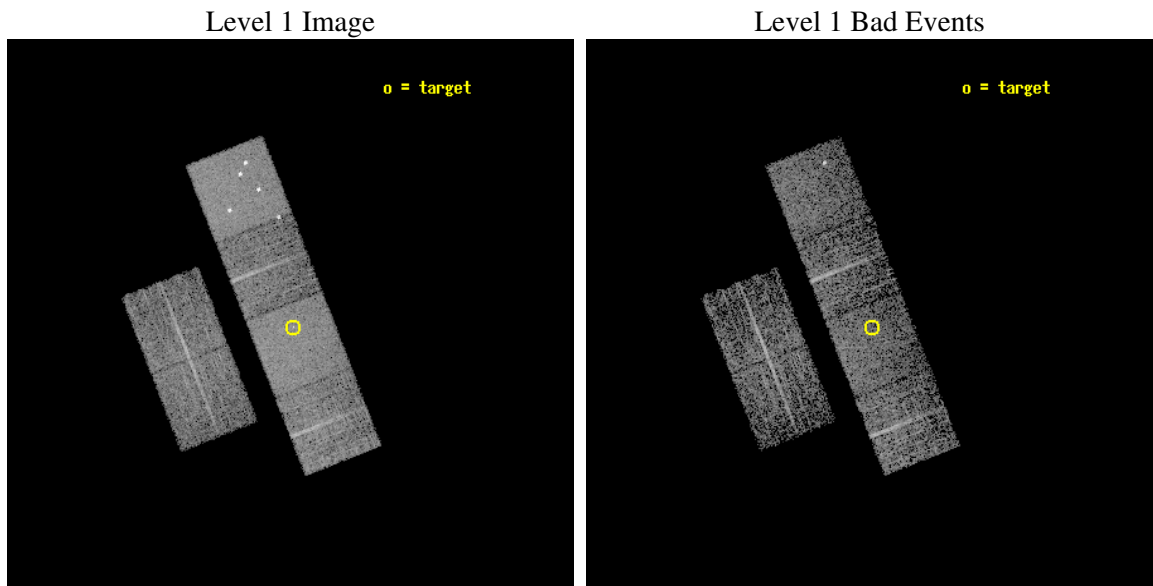
seq_num	700720
obs_id	4041
title	WHY DO WE SEE BROAD LINES IN X-RAY ABSORBED AGN?
observer	Dr. BELINDA WILKES
object	2MASS124349-080248
dtcycle	0
cycle	P
ra_targ	190.955833
dec_targ	-8.046722
ra_nom	190.96088953859
dec_nom	-8.0385387438642
roll_nom	68.647252283902
revision	2
ontime	3782.3999859095
livetime	3734.5049598
ontime2	3782.3999859095
ontime3	3782.3999859095
ontime5	3782.3999859095
ontime6	3782.3999859095
ontime7	3782.3999859095
ontime8	3782.3999859095
l2events	63283



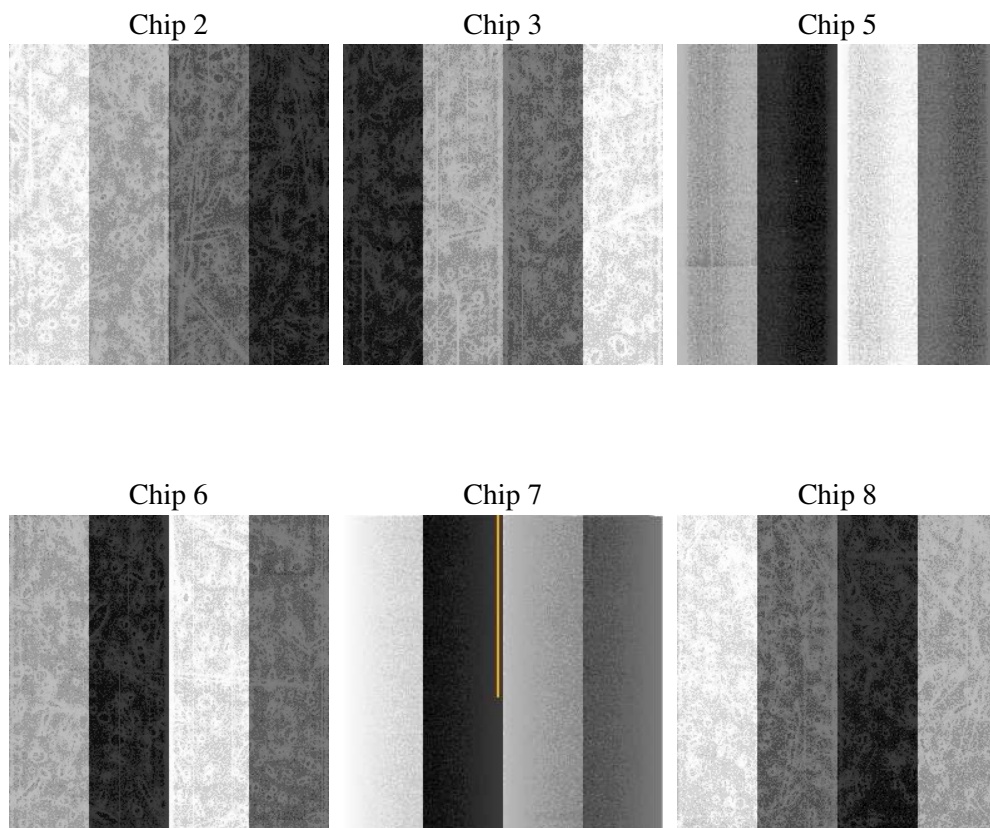
2 OBI

2.1 OBI

2.1.1 Images



2.1.2 Bias



2.1.3 Parameters

obi_num	0
ascdsver	7.6.9
caldbver	3.2.3
date	2006-10-14T21:01:56
revision	2

sched_exp_time	3822.861000
ontime	3788.7291081846
ontime2	3788.7290882766
ontime3	3788.7290882766
ontime5	3788.7291081846
ontime6	3788.7290882766
ontime7	3788.7291081846
ontime8	3788.7290882766
l1events	198357

2.1.4 Events

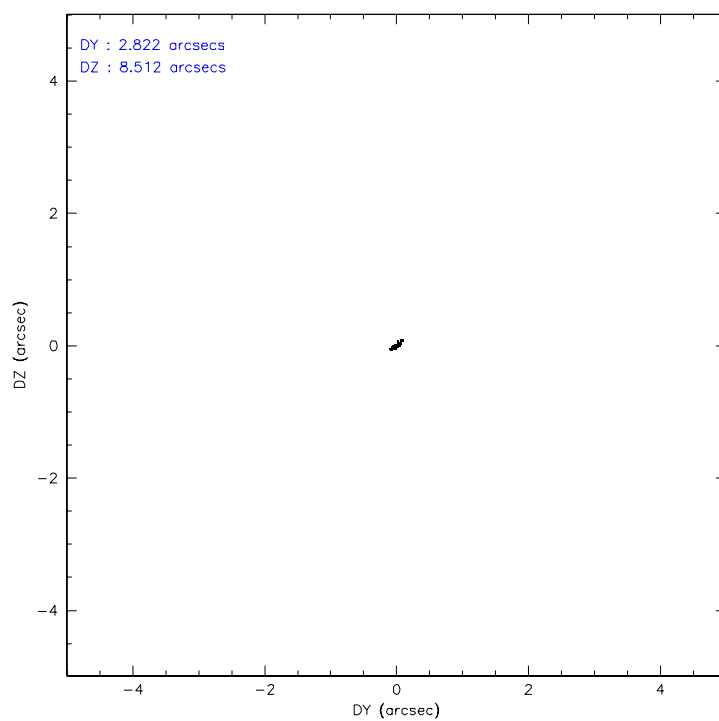
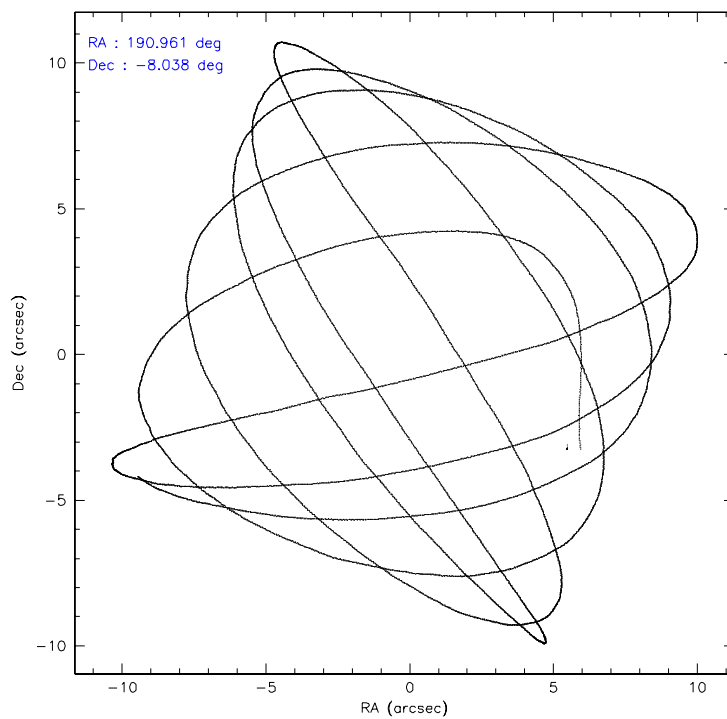
	ccd 2	ccd 3	ccd 5	ccd 6	ccd 7	ccd 8
level 1 events	26243	25380	46438	26914	39533	33849
rejected events	20166	19261	20497	20628	20216	24226
rejected %	76%	75%	44%	76%	51%	71%

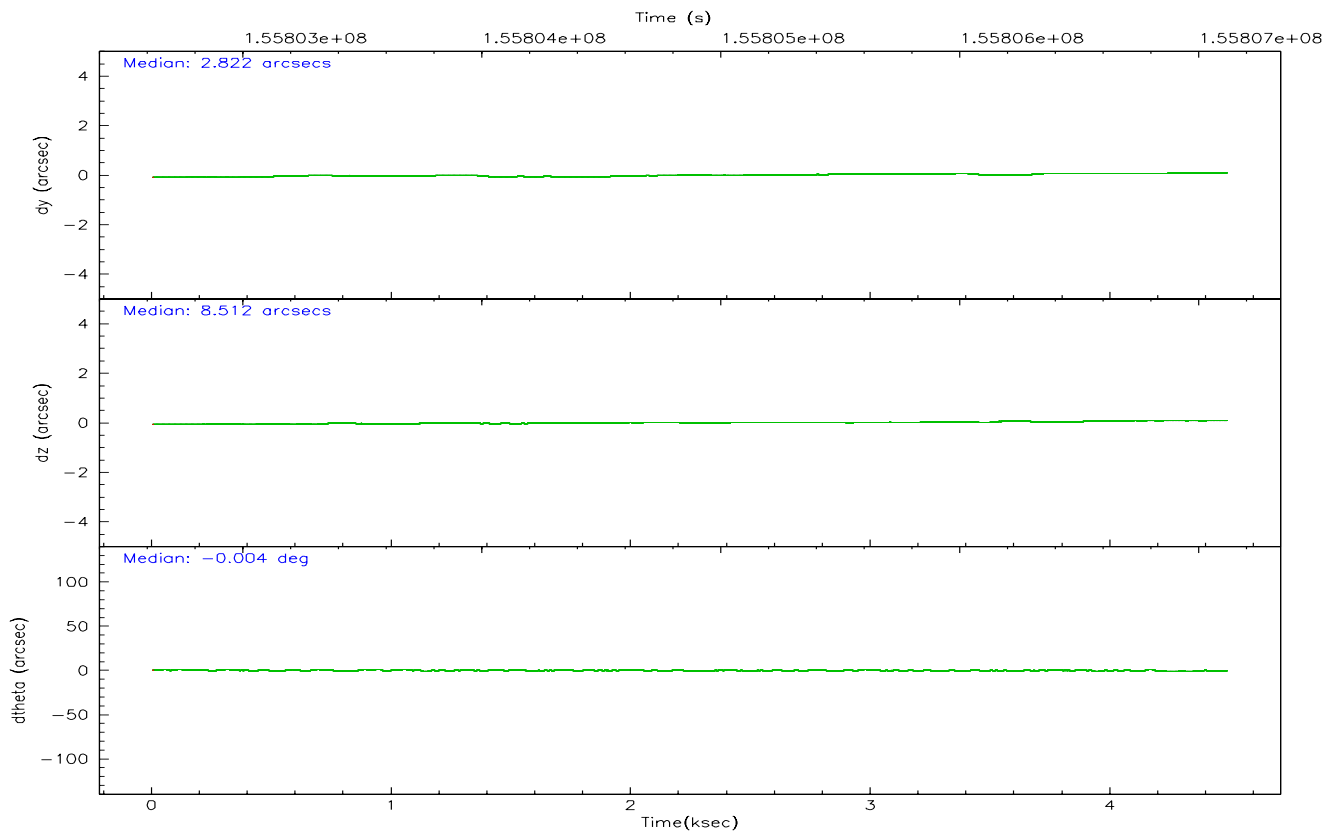
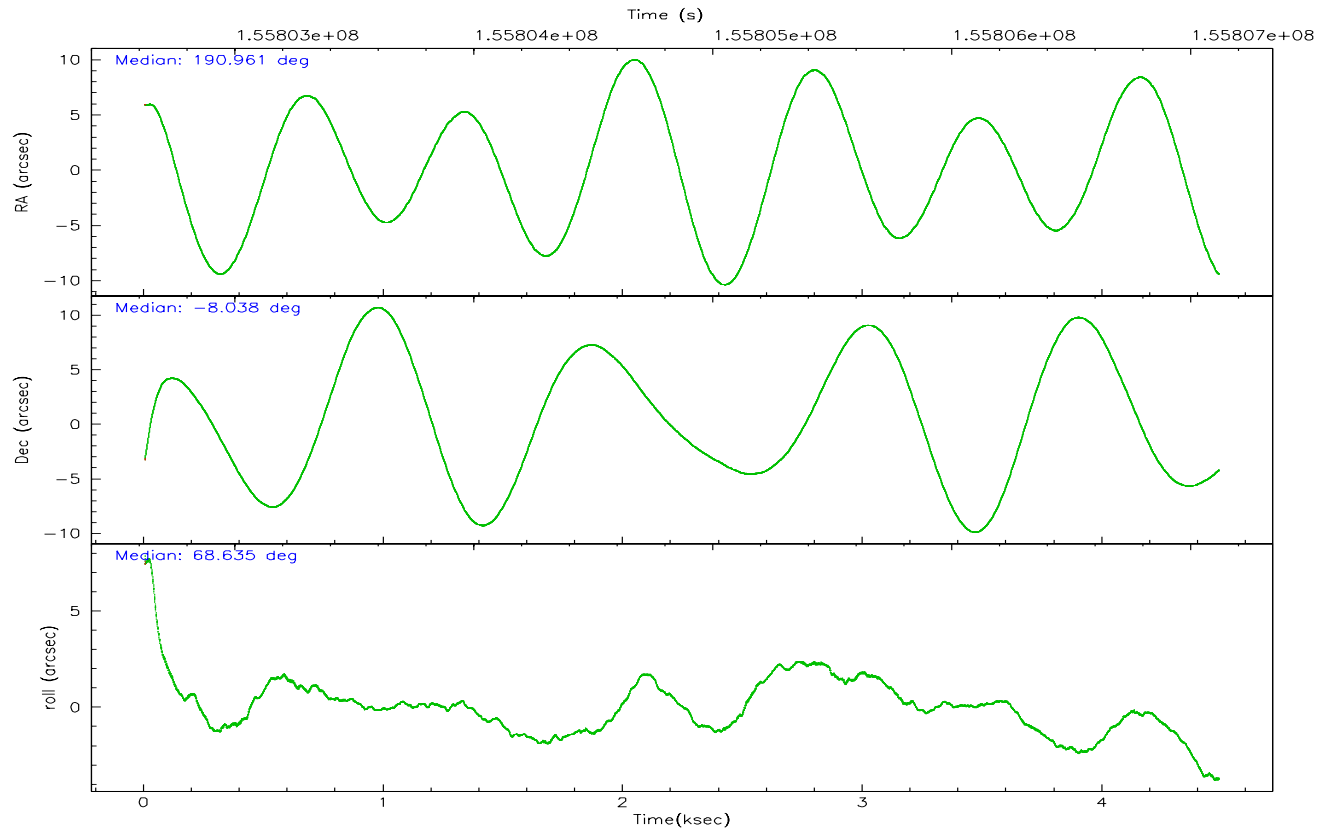
	ccd 2	ccd 3	ccd 5	ccd 6	ccd 7	ccd 8
grade 0 events	3956	3957	5567	3792	1539	4815
	15%	15%	11%	14%	3%	14%
grade 1 events	25	26	472	16	20	33
	0%	0%	1%	0%	0%	0%
grade 2 events	841	856	7214	979	4441	1677
	3%	3%	15%	3%	11%	4%
grade 3 events	361	373	663	382	1037	731
	1%	1%	1%	1%	2%	2%
grade 4 events	349	366	605	376	953	689
	1%	1%	1%	1%	2%	2%
grade 5 events	924	1003	1687	1036	2142	1370
	3%	3%	3%	3%	5%	4%
grade 6 events	583	581	11942	769	11398	1721
	2%	2%	25%	2%	28%	5%
grade 7 events	19204	18218	18288	19564	18003	22813
	73%	71%	39%	72%	45%	67%

2.2 Compared Parameters

Parameter	Planned	Actual	Parameter	Planned	Actual
Instrument	ACIS	ACIS	Obspar format version number	6	6
Detector	ACIS-235678	ACIS-235678	Obspar file type	PREDICTED	ACTUAL
Grating	NONE	NONE	Obspar update status	NONE	UPDATED
Data mode	FAINT	FAINT	Number of optional ACIS chips dropped	0	0
Observation mode	POINTING	POINTING	On-chip summing requested	N	N
Pointing RA	190.965436	190.9608895385866	Subarray requested	NONE	NONE
Pointing Dec	-8.065334	-8.038538743864173	Alternating exposures requested	N	N
Pointing Roll	68.491250	68.64725228390233	Primary exposure time	0.000000	3.2
SIM focus pos (mm)	-0.684267	-0.6828225247311905			
SIM defocus (mm)	0	0.001444936568705701			
SIM translation stage pos (mm)	-190.132523	-190.1425803651734			
SIM translation stage offset (mm)	0	0.01005778216563158			
Observation start time	155803292.184000	155802093.64778			
Observation start date	2002-12-09T06:40:28	2002-12-09T06:21:33			
Observation end time	155807115.184000	155807429.798			
Observation end date	2002-12-09T07:44:11	2002-12-09T07:50:29			
Read mode	TIMED	TIMED			

2.3 Aspect



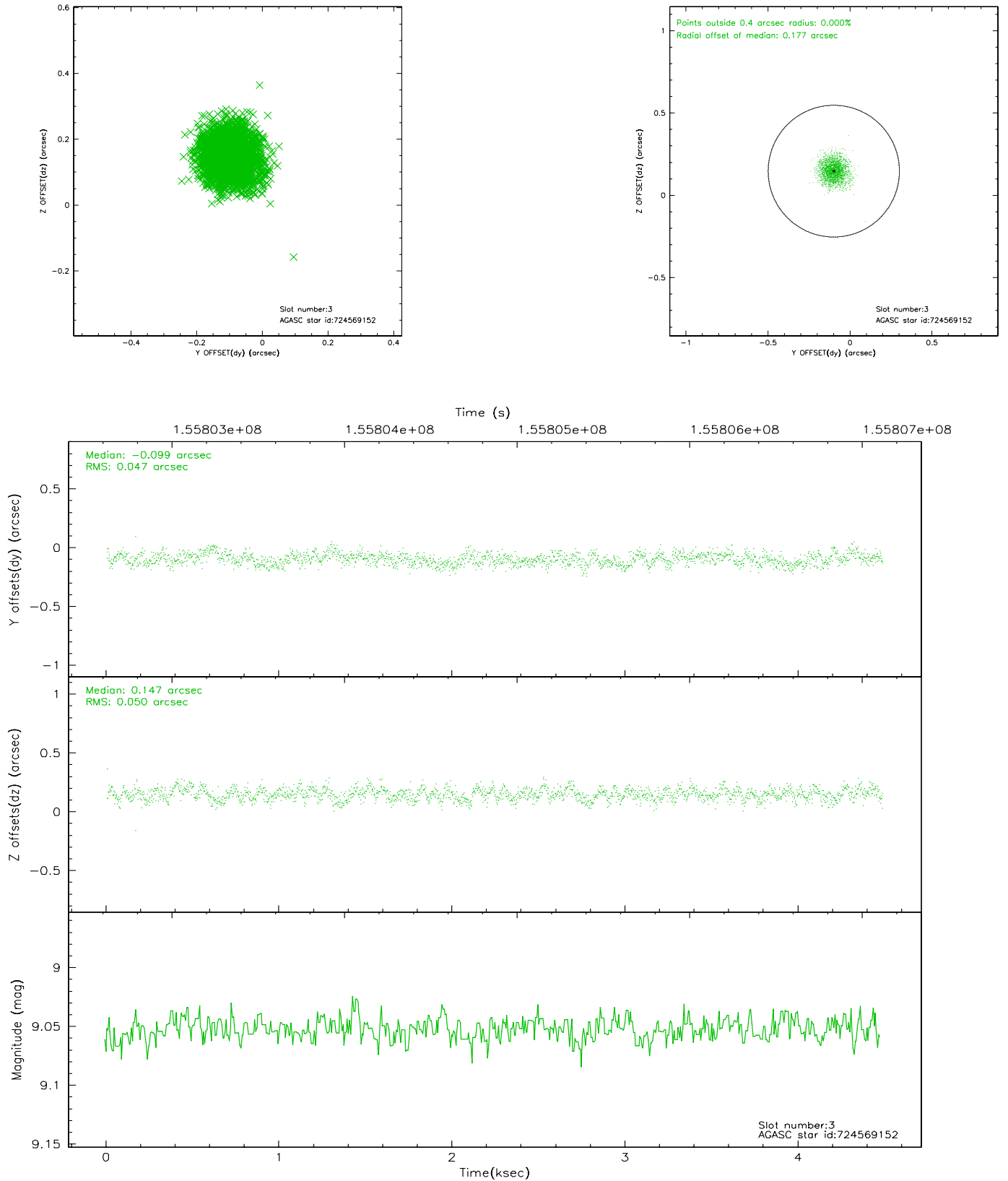


Slot Statistics

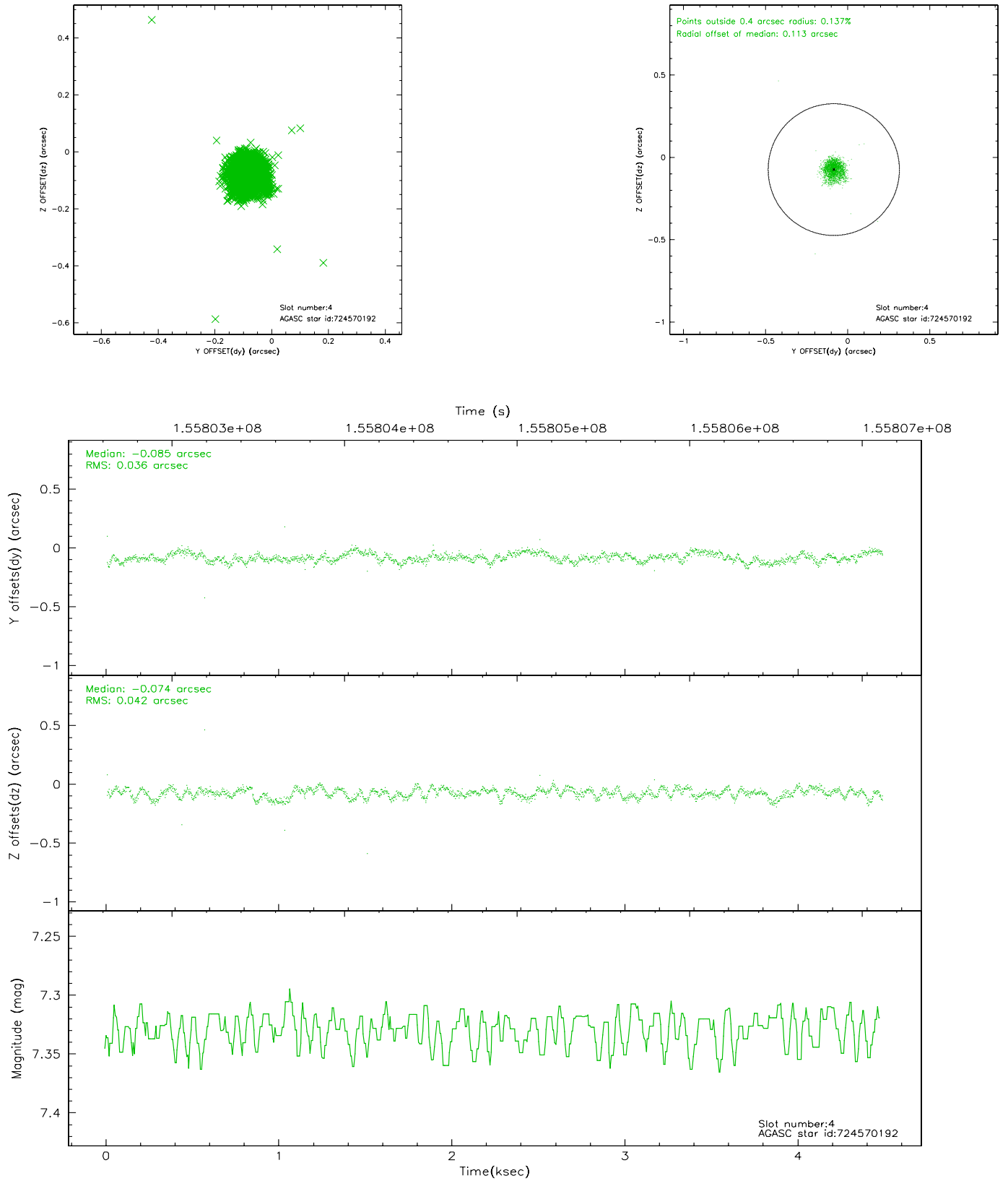
slot	status	id	mag	n_pts	med_dy	med_dz	dr1	dr2	ra	dec	mean_y	mean_z
0	FID	ACIS-S-1	7.20	1094	0.027	0.042	0.007	0.012	0.000000	0.000000	940.57	-1725.28
1	FID	ACIS-S-4	7.20	1094	-0.066	-0.038	0.007	0.011	0.000000	0.000000	2158.68	177.37
2	FID	ACIS-S-5	7.24	1094	0.012	0.009	0.006	0.011	0.000000	0.000000	-1806.52	172.63
3	GUIDE	724569152	9.05	2187	-0.099	0.147	0.073	0.115	191.027052	-8.272629	-614.84	-476.42
4	GUIDE	724570192	7.33	2187	-0.085	-0.074	0.055	0.087	191.248611	-8.532002	-1194.78	-1553.21
5	GUIDE	724575352	8.97	2188	-0.008	0.156	0.088	0.139	191.367943	-8.682962	-1545.34	-2147.41
6	GUIDE	724575480	9.07	2187	0.129	0.120	0.069	0.112	190.770811	-8.610142	-2080.58	-74.43
7	GUIDE	724571720	7.43	2187	0.058	-0.346	0.074	0.113	190.169563	-8.448452	-2327.80	2130.62

2.4 Star Slots

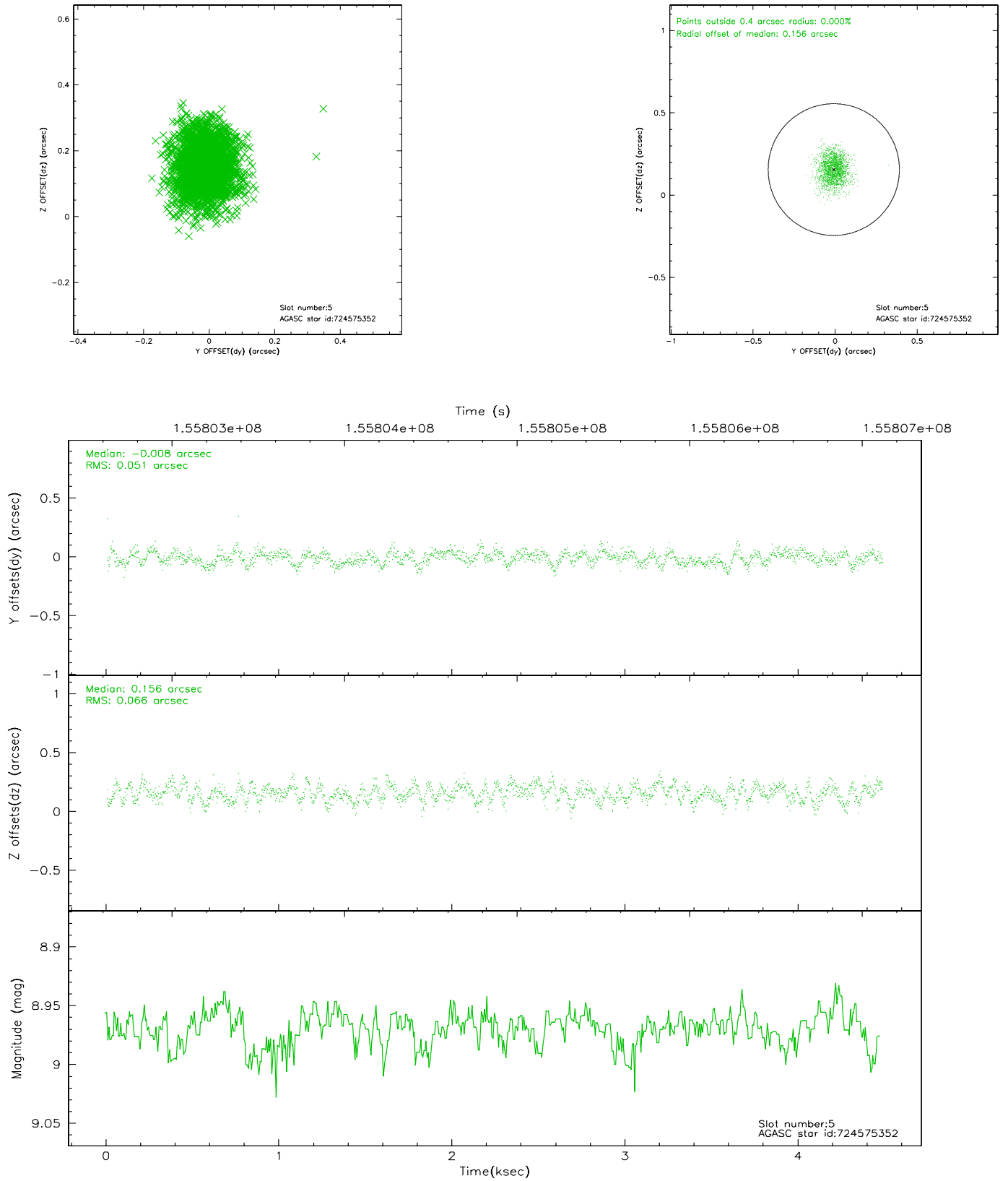
2.4.1 Slot 3



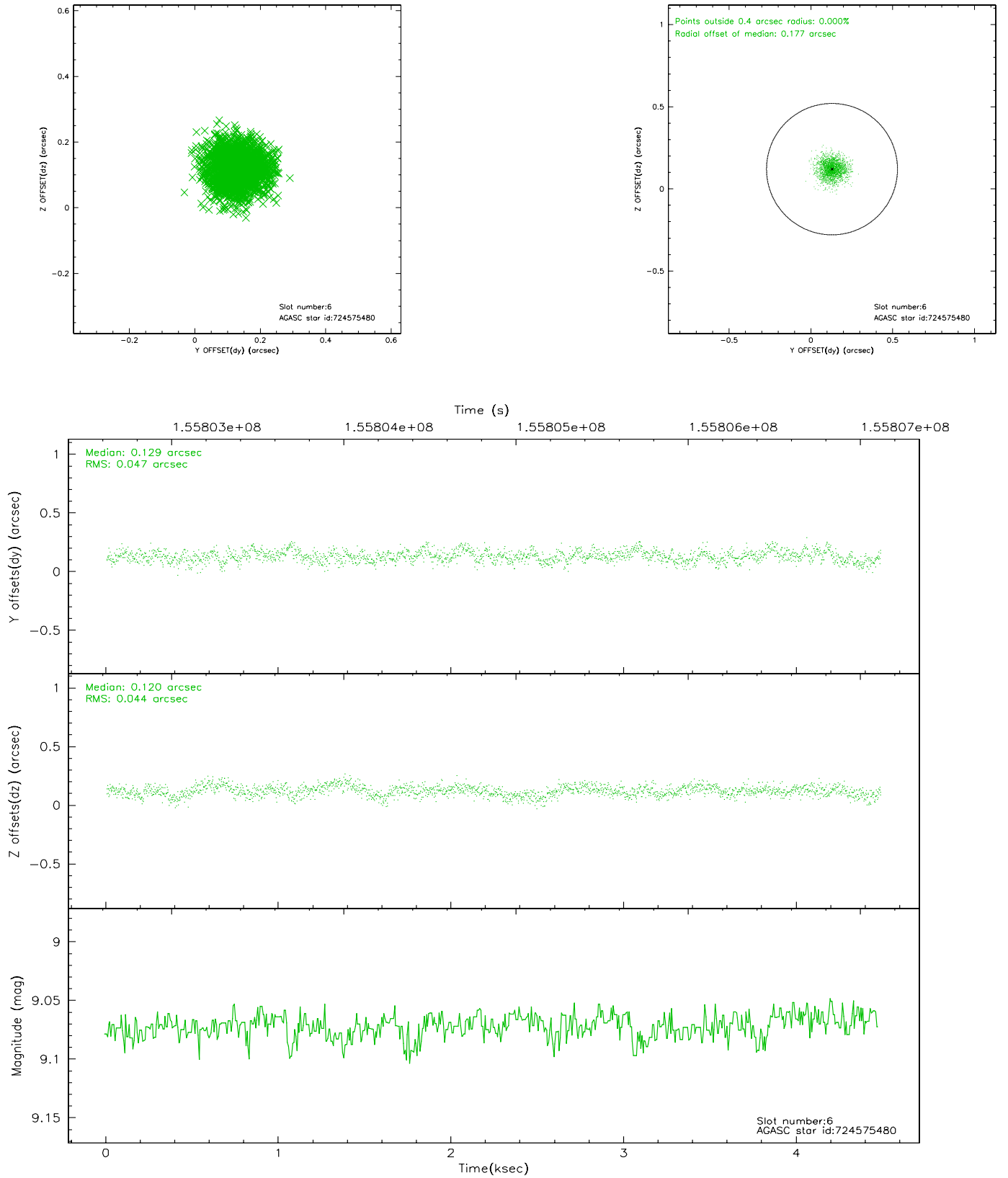
2.4.2 Slot 4



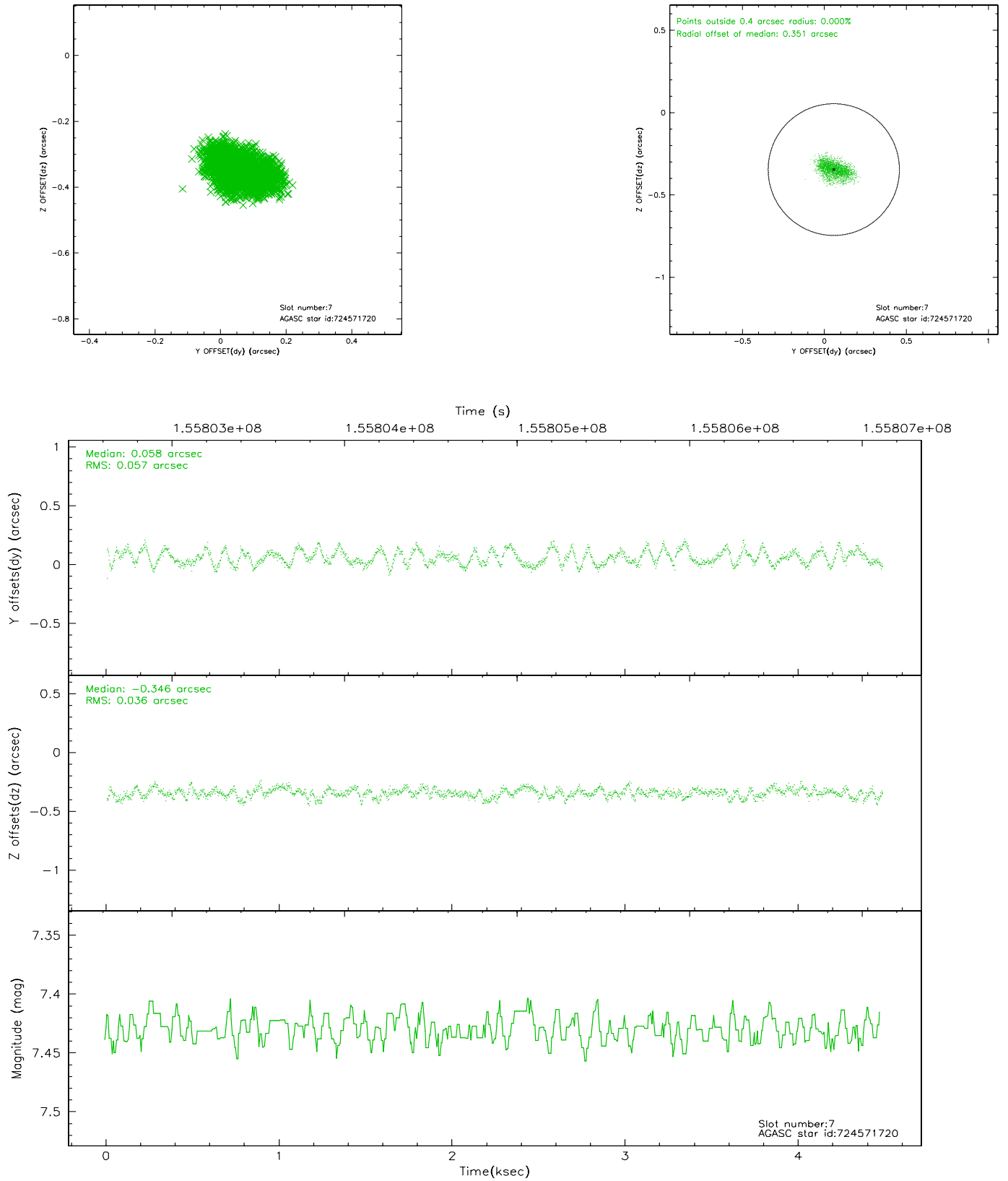
2.4.3 Slot 5



2.4.4 Slot 6

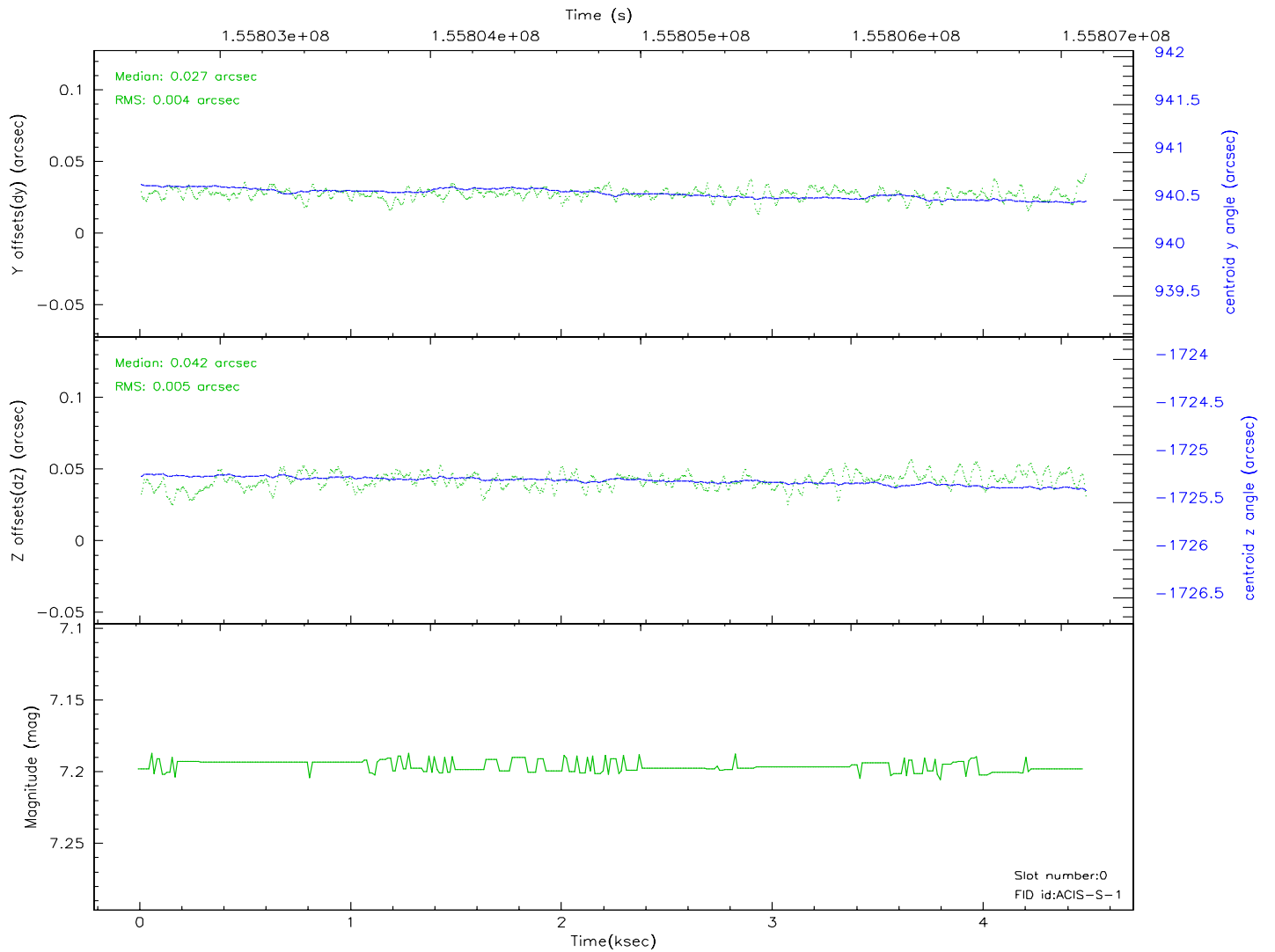
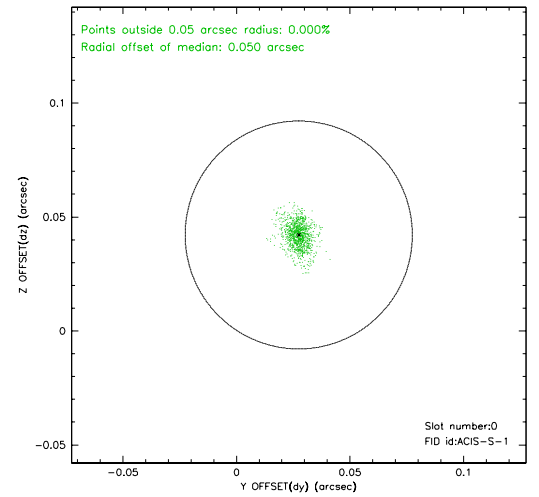
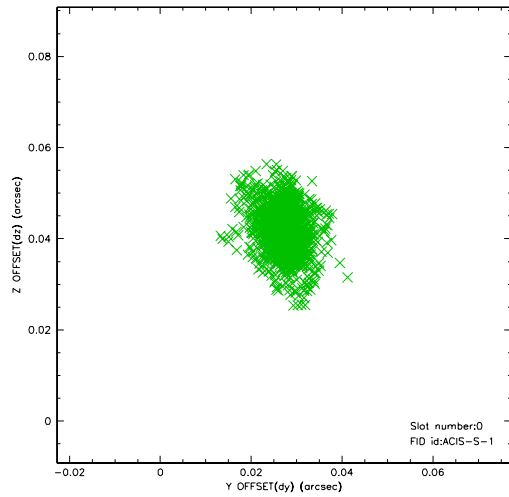


2.4.5 Slot 7

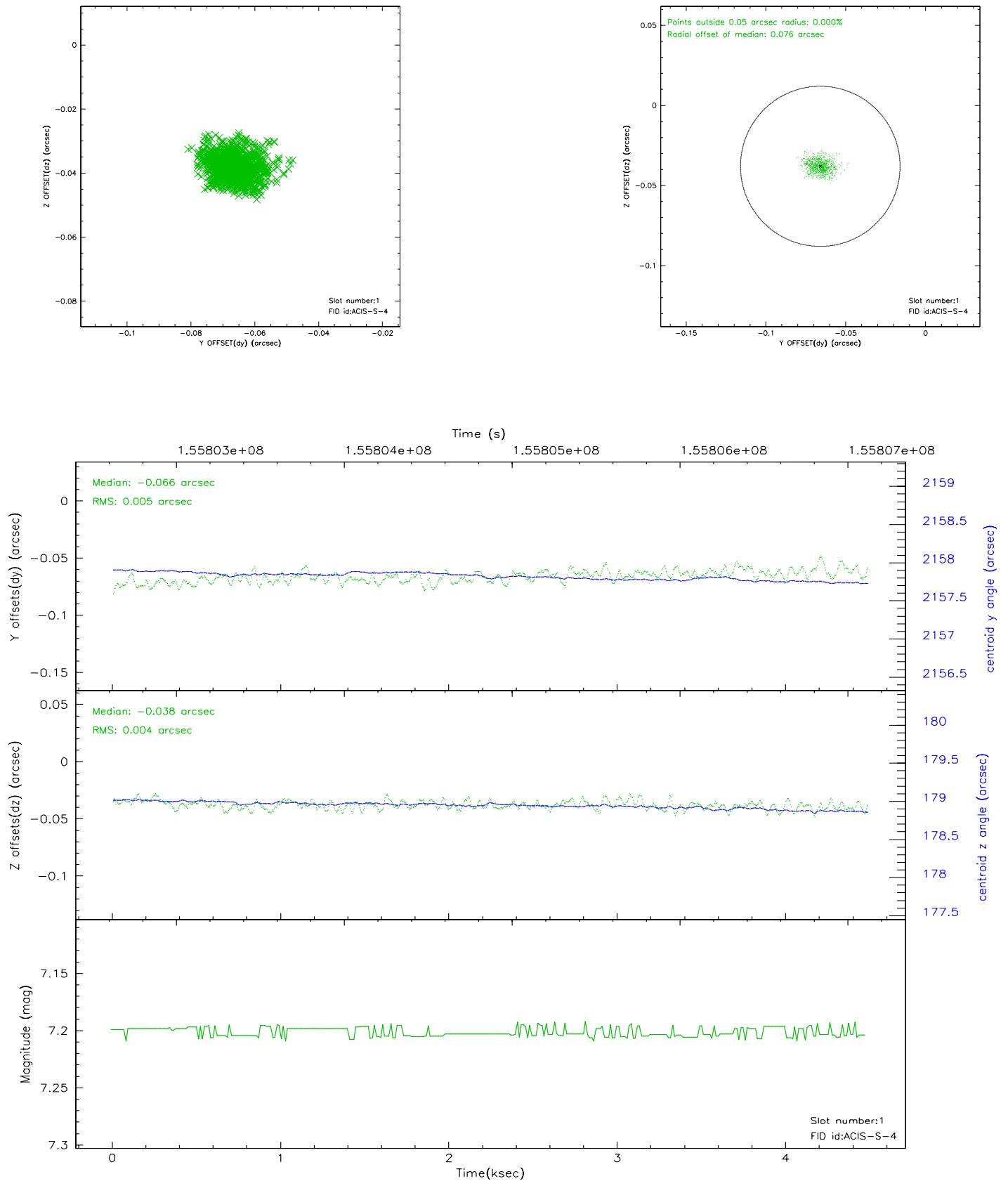


2.5 FID Slots

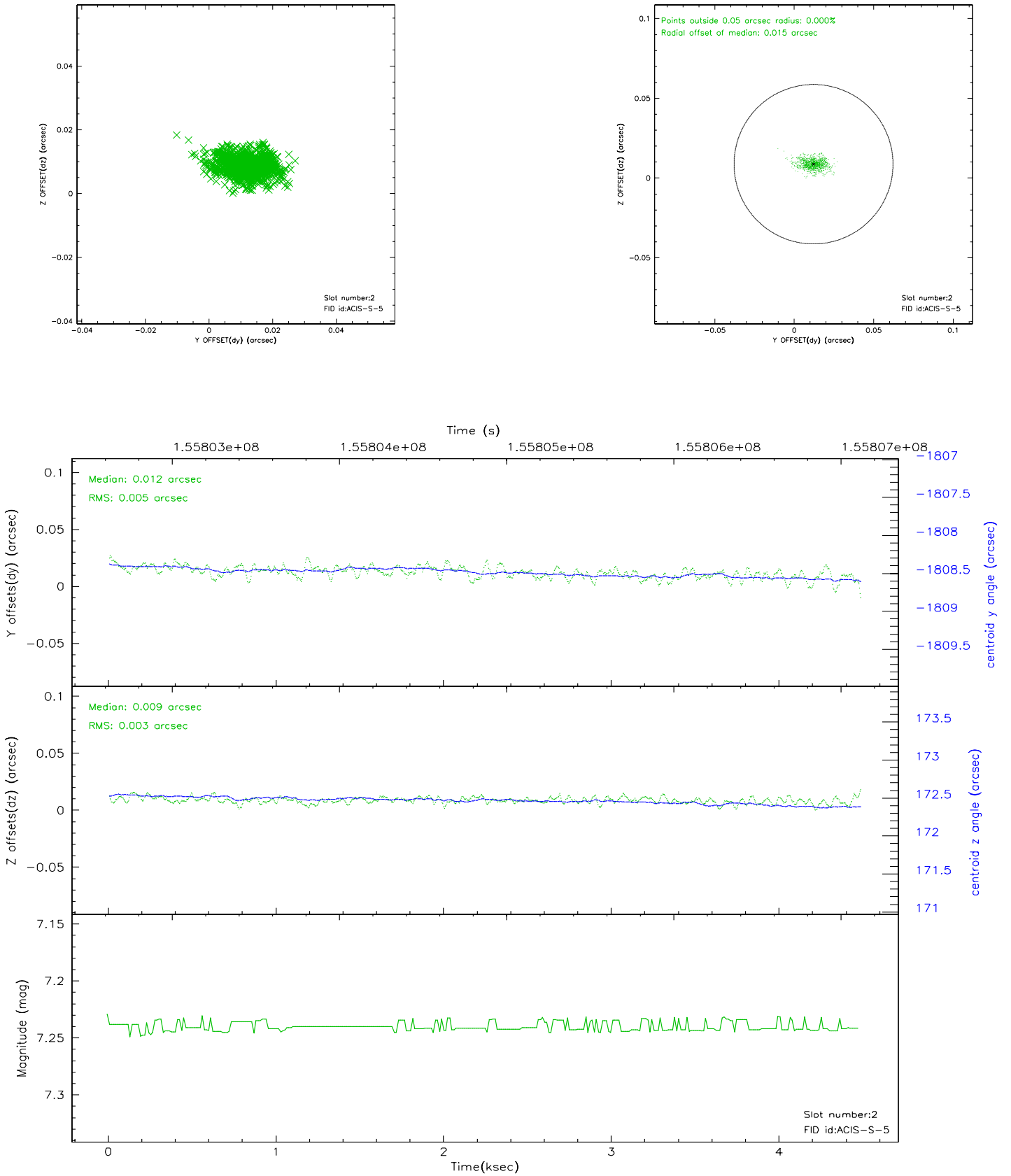
2.5.1 Slot 0



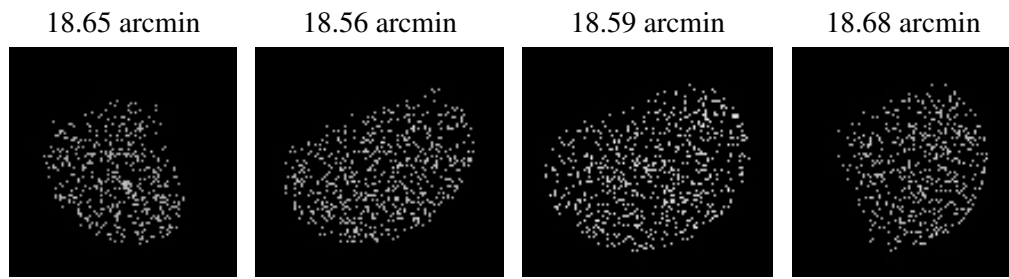
2.5.2 Slot 1



2.5.3 Slot 2



3 Point Sources



A Summary

A.1 Status

V&V Scientist	Beth Sundheim
V&V Date (YYYY-MM-DD)	2006.10.15
V&V Edition	1
V&V Disposition and Status	OK
V&V Charge Time	3.786

A.2 Comments