

V&V Reference Report

L2 ASCDS Version : 7.6.8

Observation 4022 - L2 Version 001
Chandra X-Ray Center

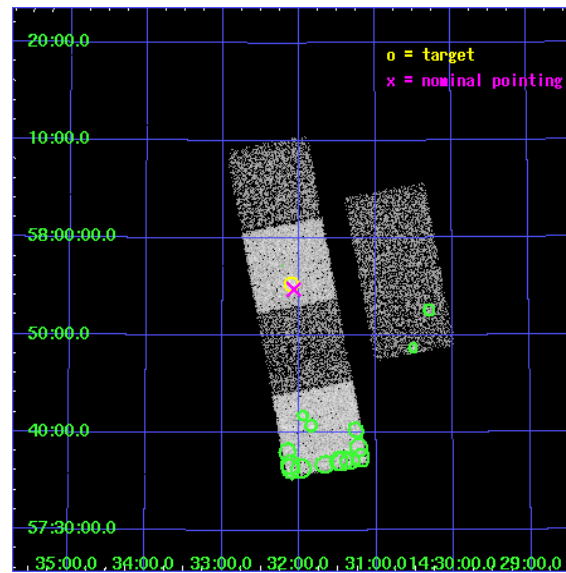
L2 Processing Date : Jul 12 2006

Contents

1	Front	2
2	OBI	3
2.1	OBI	3
2.1.1	Images	3
2.1.2	Bias	3
2.1.3	Parameters	4
2.1.4	Events	4
2.2	Compared Parameters	5
2.3	Aspect	6
2.4	Star Slots	9
2.4.1	Slot 3	9
2.4.2	Slot 4	10
2.4.3	Slot 5	11
2.4.4	Slot 6	12
2.4.5	Slot 7	13
2.5	FID Slots	14
2.5.1	Slot 0	14
2.5.2	Slot 1	15
2.5.3	Slot 2	16
3	Point Sources	17
A	Summary	18
A.1	Status	18
A.2	Comments	18

1 Front

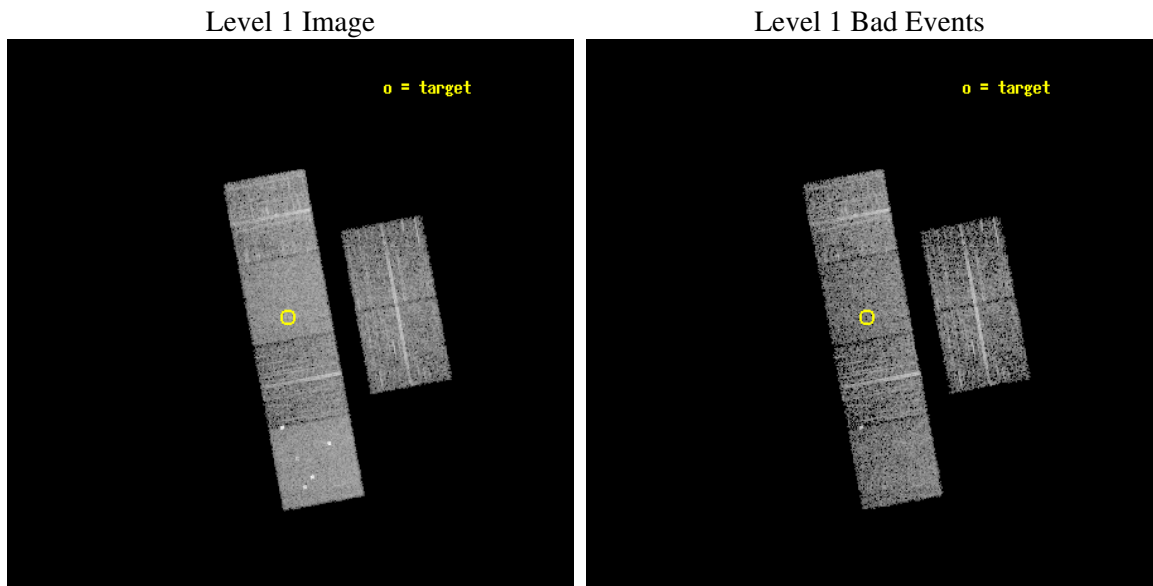
seq_num	700701
obs_id	4022
title	A CHANDRA SURVEY OF INFRARED-BRIGHT LINER GALAXIES
observer	Dr. Shobita Satyapal
object	NGC5678
dtcycle	0
cycle	P
ra_targ	218.024167
dec_targ	57.921389
ra_nom	218.0178891376
dec_nom	57.912404648721
roll_nom	259.35179060053
revision	2
ontime	4793.5999821424
livetime	4732.9005328092
ontime2	4793.5999821424
ontime3	4793.5999821424
ontime5	4793.5999821424
ontime6	4793.5999821424
ontime7	4793.5999821424
ontime8	4790.3590118587
l2events	45354



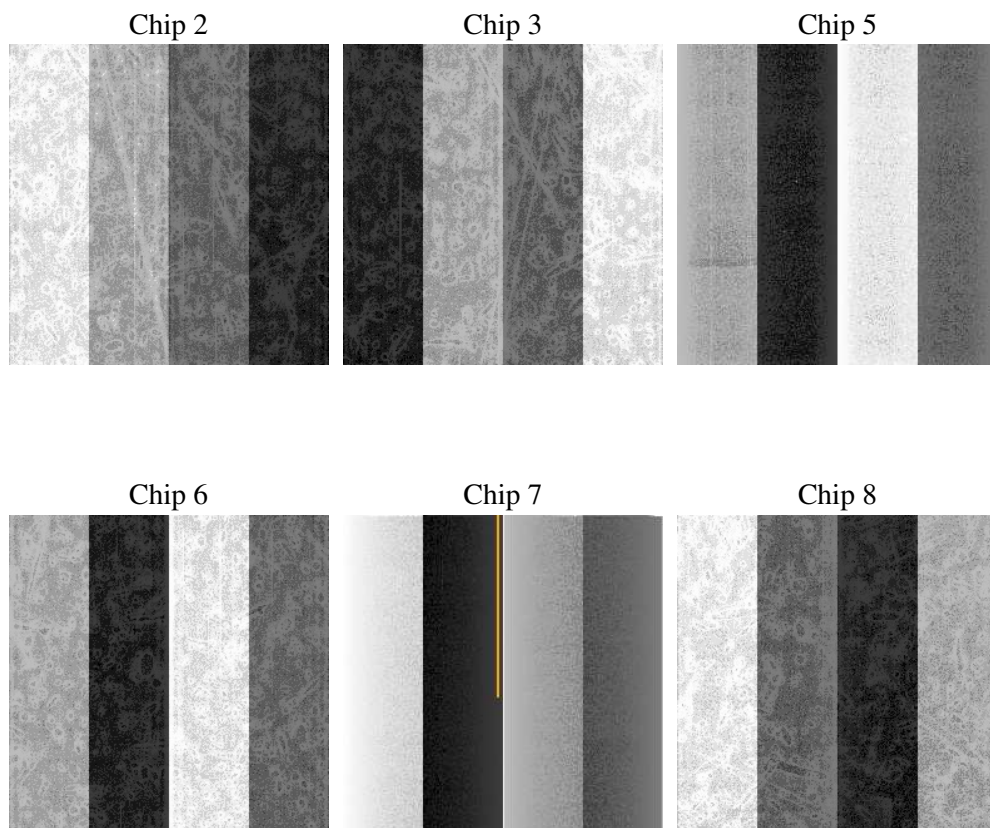
2 OBI

2.1 OBI

2.1.1 Images



2.1.2 Bias



2.1.3 Parameters

obi_num	0
ascdsver	7.6.8
caldsver	3.2.2
date	2006-07-12T13:56:55
revision	2

sched_exp_time	5038.000000
ontime	4796.6807042658
ontime2	4796.6807042658
ontime3	4796.6807042658
ontime5	4796.6807042658
ontime6	4796.6807042658
ontime7	4796.6807042658
ontime8	4793.439614445
l1events	214380

2.1.4 Events

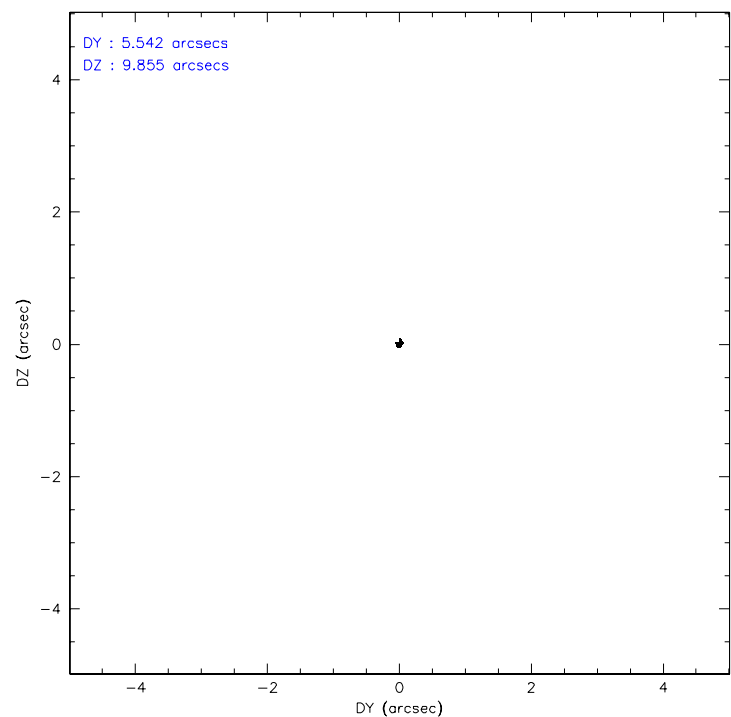
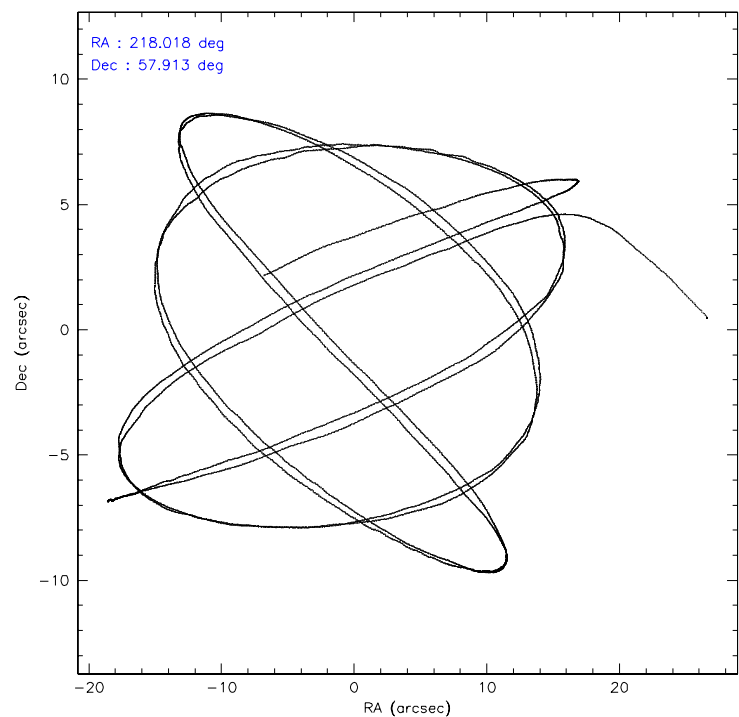
	ccd 2	ccd 3	ccd 5	ccd 6	ccd 7	ccd 8
level 1 events	29493	28185	44951	29470	39838	42443
rejected events	25895	24684	24421	25963	24630	33634
rejected %	87%	87%	54%	88%	61%	79%

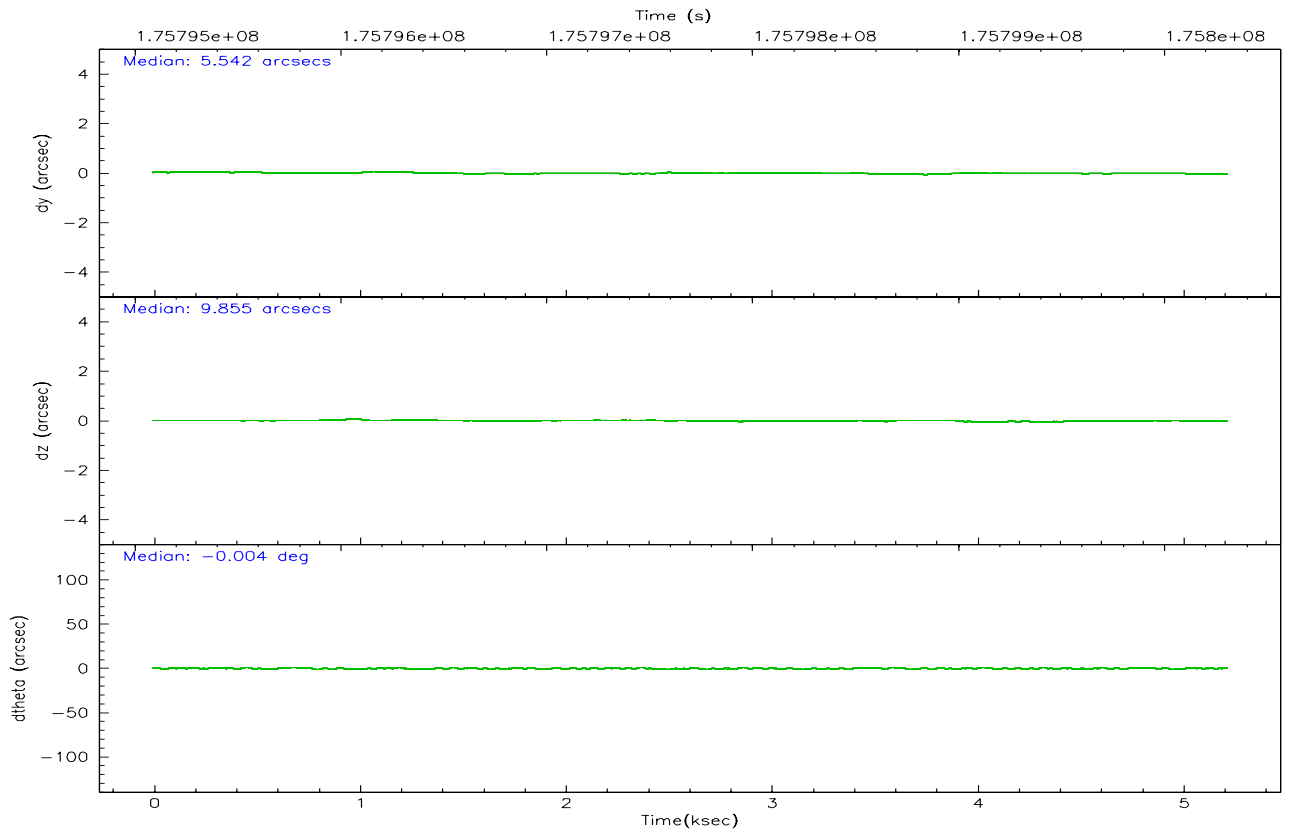
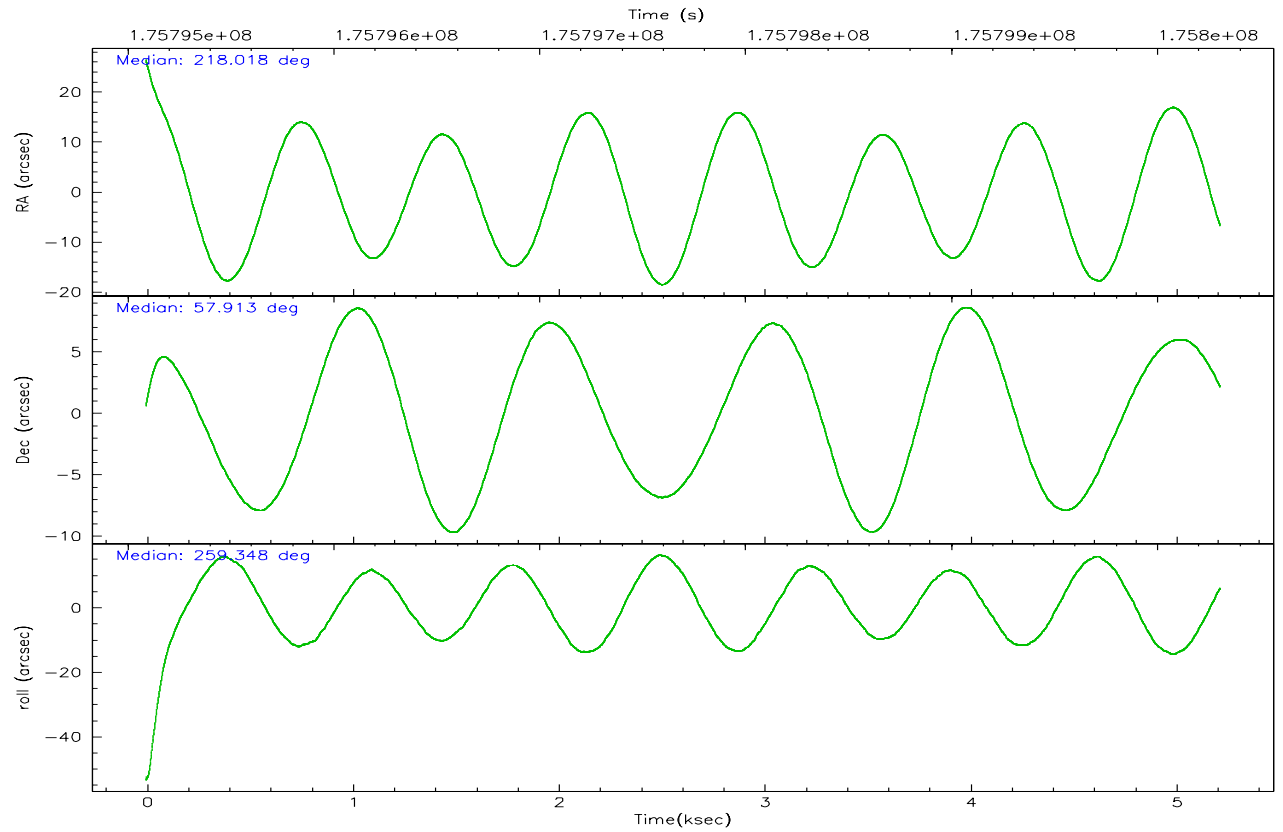
	ccd 2	ccd 3	ccd 5	ccd 6	ccd 7	ccd 8
grade 0 events	1634	1523	2678	1326	1009	2813
	5%	5%	5%	4%	2%	6%
grade 1 events	17	10	158	17	27	44
	0%	0%	0%	0%	0%	0%
grade 2 events	729	732	5907	752	3782	1855
	2%	2%	13%	2%	9%	4%
grade 3 events	318	328	507	356	771	1049
	1%	1%	1%	1%	1%	2%
grade 4 events	352	312	467	359	781	958
	1%	1%	1%	1%	1%	2%
grade 5 events	1241	1236	2214	1329	2674	1781
	4%	4%	4%	4%	6%	4%
grade 6 events	573	608	10985	717	8872	2138
	1%	2%	24%	2%	22%	5%
grade 7 events	24629	23436	22035	24614	21922	31805
	83%	83%	49%	83%	55%	74%

2.2 Compared Parameters

Parameter	Planned	Actual	Parameter	Planned	Actual
Instrument	ACIS	ACIS	Obspar format version number	6	6
Detector	ACIS-235678	ACIS-235678	Obspar file type	PREDICTED	ACTUAL
Grating	NONE	NONE	Obspar update status	NONE	UPDATED
Data mode	FAINT	FAINT	On-chip summing requested	N	N
Observation mode	POINTING	POINTING	Subarray requested	NONE	NONE
Pointing RA	218.000064	218.0178891375974	Alternating exposures requested	N	N
Pointing Dec	57.937919	57.91240464872082	Primary exposure time	0.000000	3.2
Pointing Roll	259.210361	259.3517906005287			
SIM focus pos (mm)	-0.684267	-0.6828225247311905			
SIM defocus (mm)	0	0.001444936568705701			
SIM translation stage pos (mm)	-190.132523	-190.1425803651734			
SIM translation stage offset (mm)	0	0.01005778216563158			
Observation start time	175795259.184000	175794514.49118			
Observation start date	2003-07-28T15:59:55	2003-07-28T15:48:34			
Observation end time	175800297.184000	175800636.81644			
Observation end date	2003-07-28T17:23:53	2003-07-28T17:30:36			
Read mode	TIMED	TIMED			

2.3 Aspect



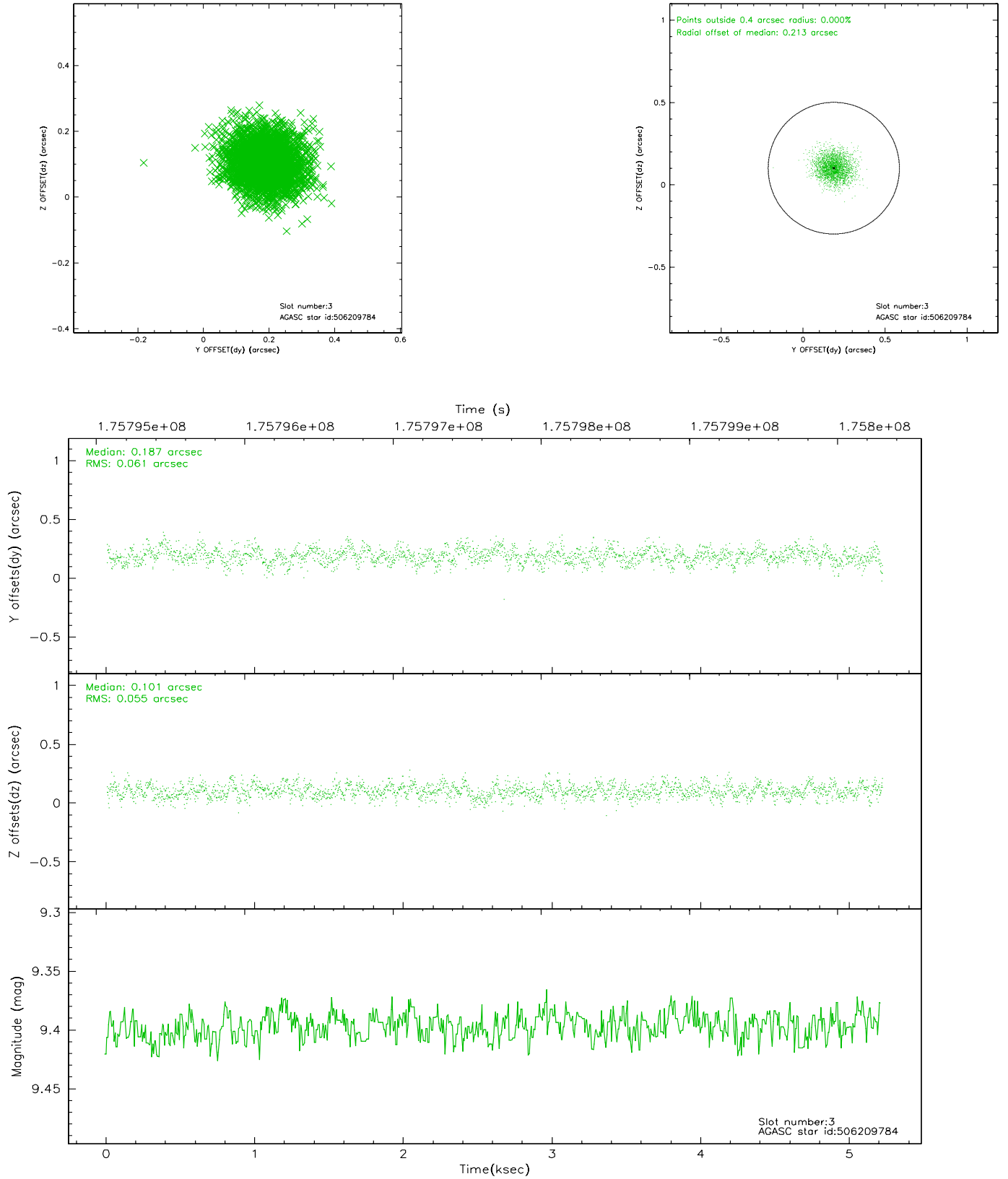


Slot Statistics

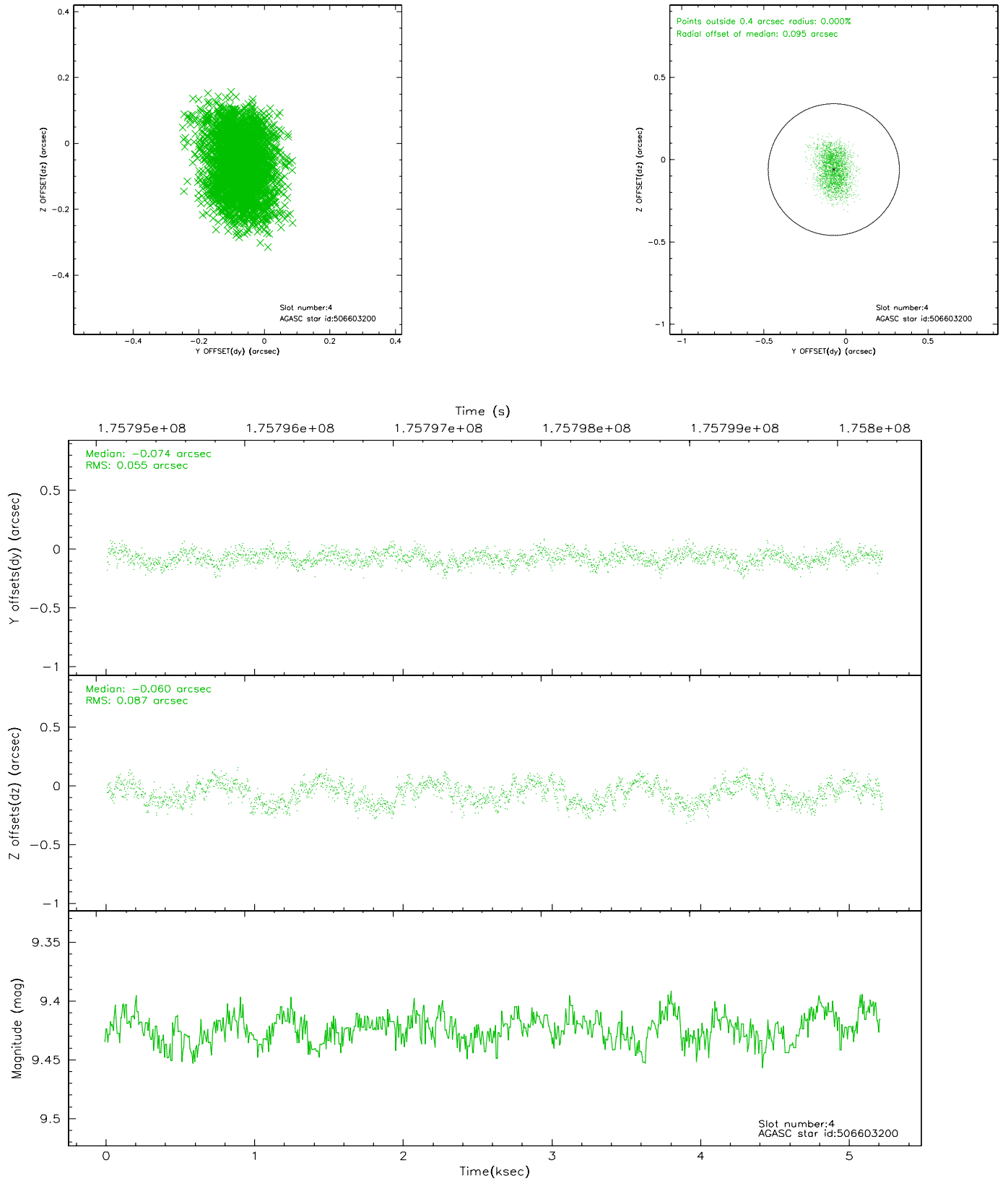
slot	status	id	mag	n_pts	med_dy	med_dz	dr1	dr2	ra	dec	mean_y	mean_z
0	FID	ACIS-S-2	7.10	1273	-0.059	-0.033	0.005	0.009	0.000000	0.000000	-758.31	-1731.08
1	FID	ACIS-S-4	7.20	1273	0.028	0.042	0.006	0.011	0.000000	0.000000	2154.53	176.28
2	FID	ACIS-S-6	7.34	1273	0.004	-0.002	0.007	0.011	0.000000	0.000000	405.22	814.95
3	GUIDE	506209784	9.40	2543	0.187	0.101	0.088	0.139	217.198701	57.472545	1927.86	-1211.78
4	GUIDE	506603200	9.42	2546	-0.074	-0.060	0.112	0.173	217.211354	58.364739	-1237.69	-1753.04
5	GUIDE	506729000	7.84	2546	-0.078	-0.191	0.059	0.097	218.197050	58.423283	-1786.57	36.49
6	GUIDE	506601256	8.06	2546	-0.129	0.162	0.060	0.094	217.750789	58.619234	-2323.12	-918.57
7	GUIDE	506734224	8.46	2543	0.101	-0.007	0.081	0.129	219.088834	57.560659	923.30	2315.59

2.4 Star Slots

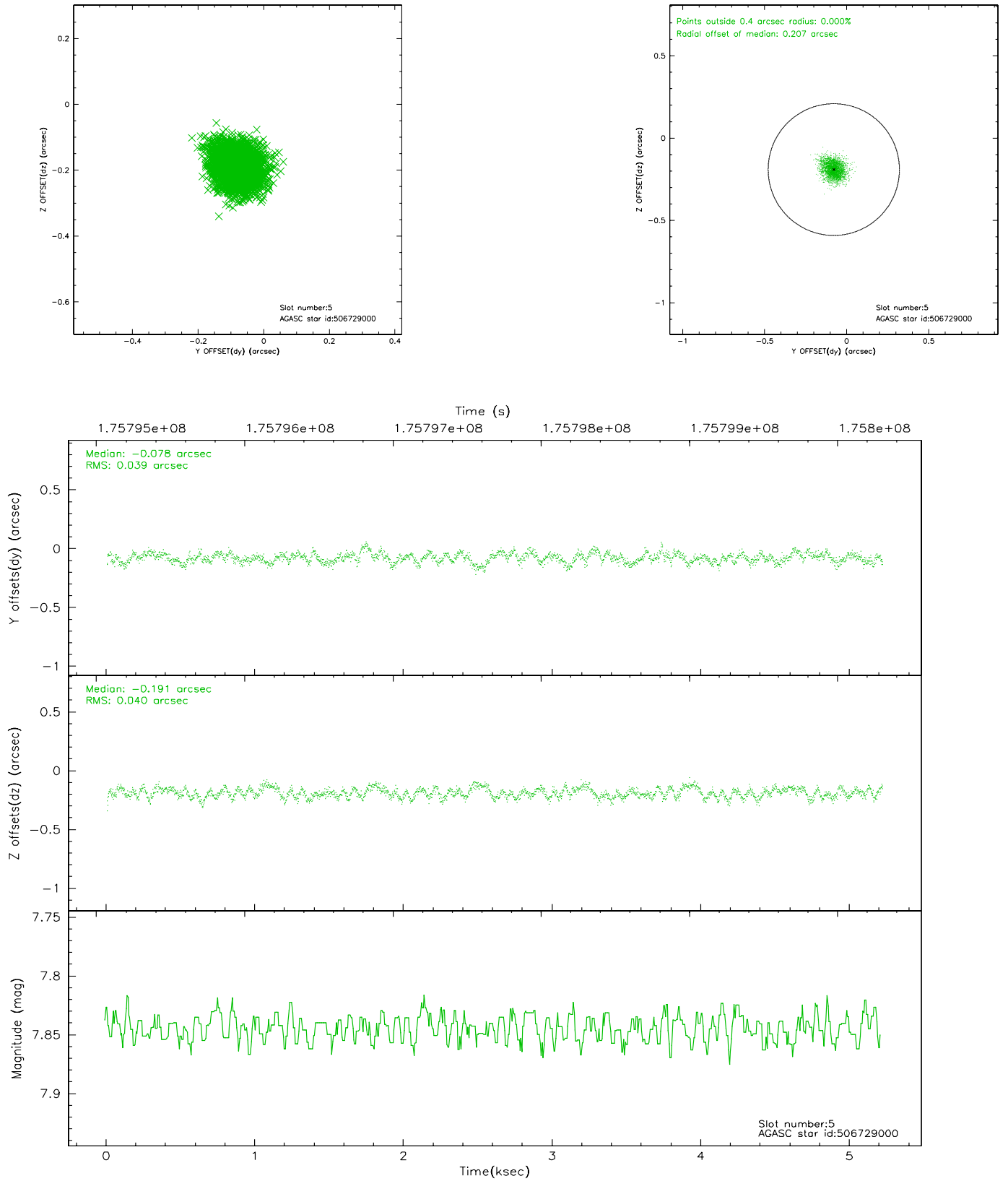
2.4.1 Slot 3



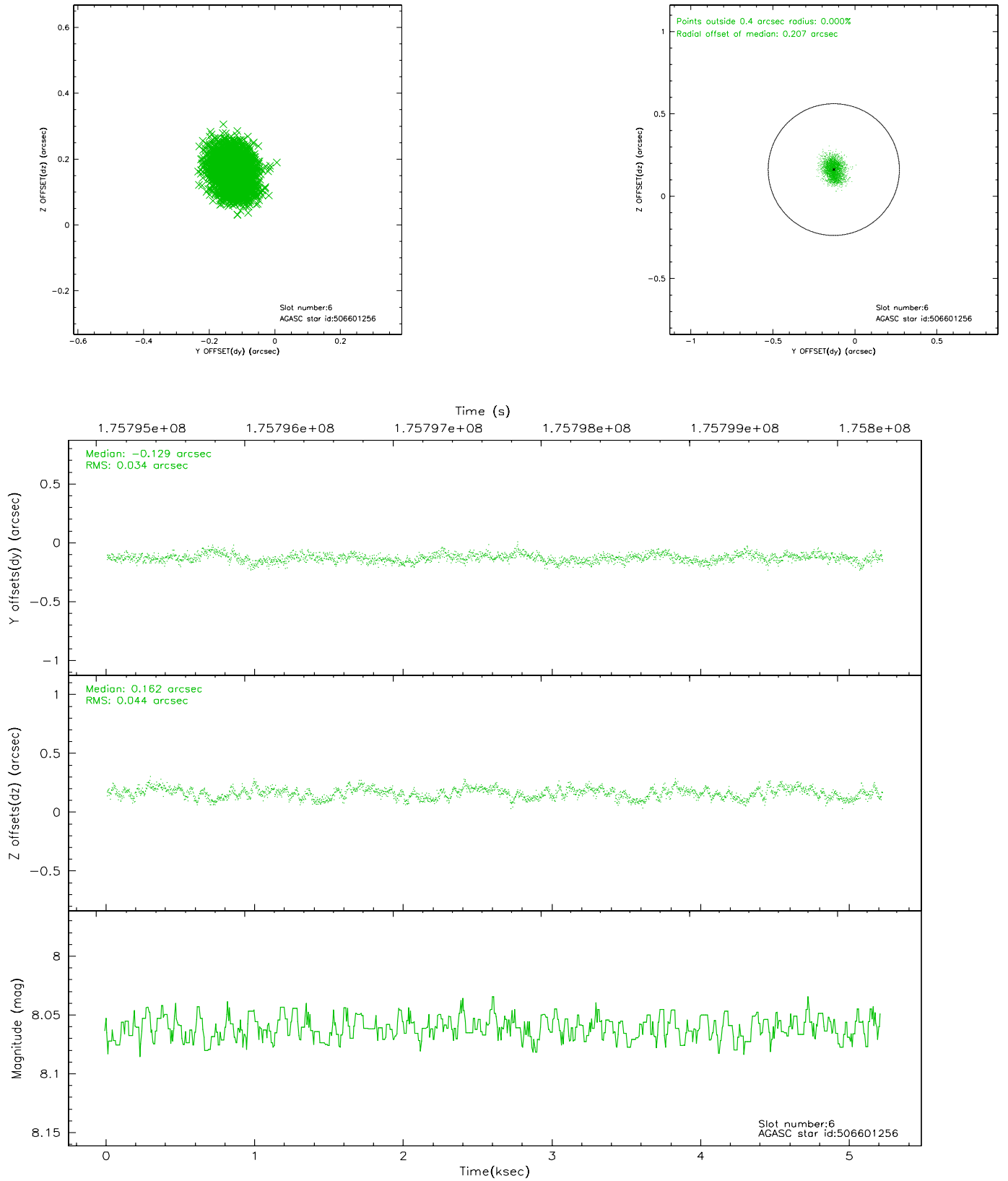
2.4.2 Slot 4



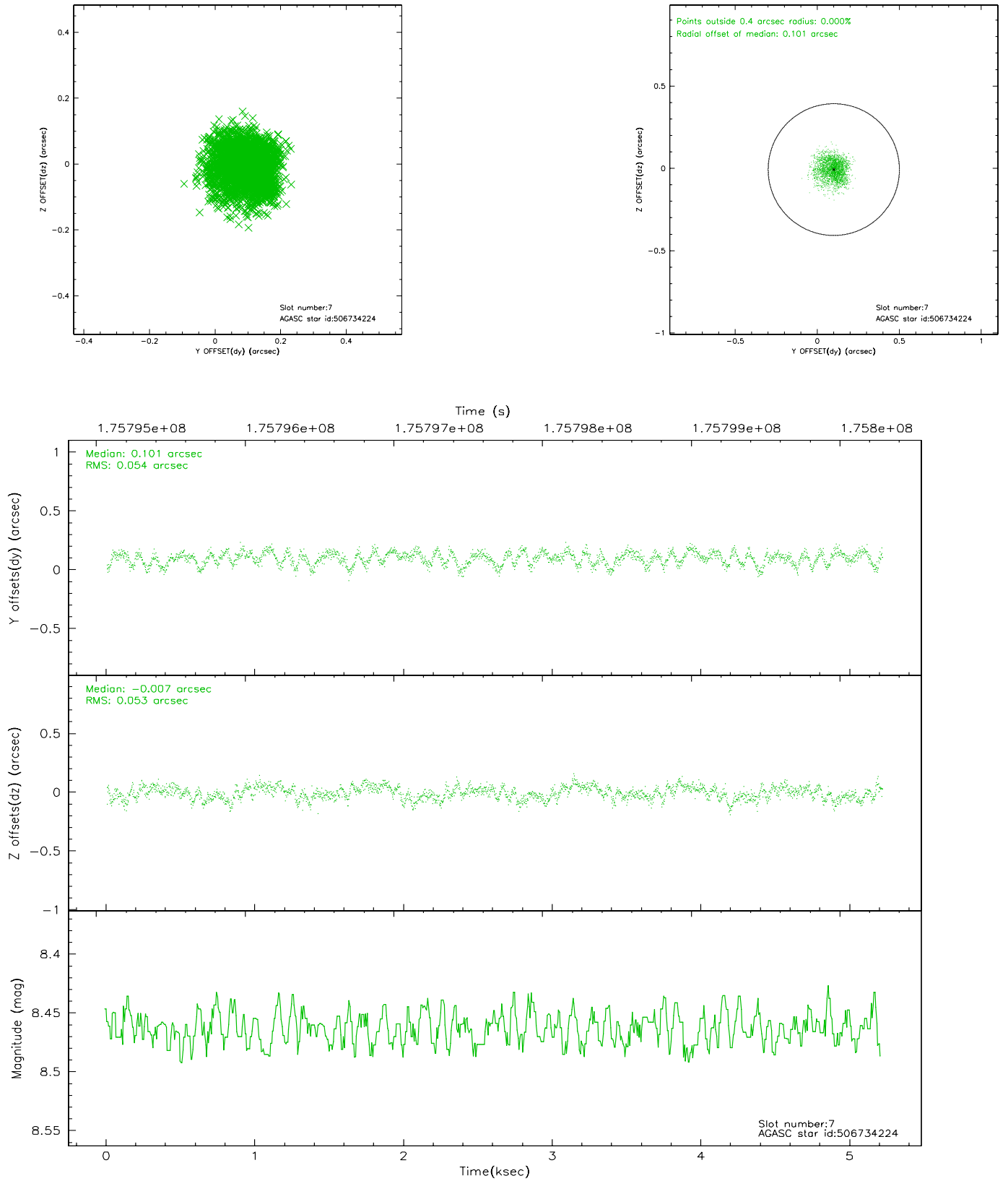
2.4.3 Slot 5



2.4.4 Slot 6

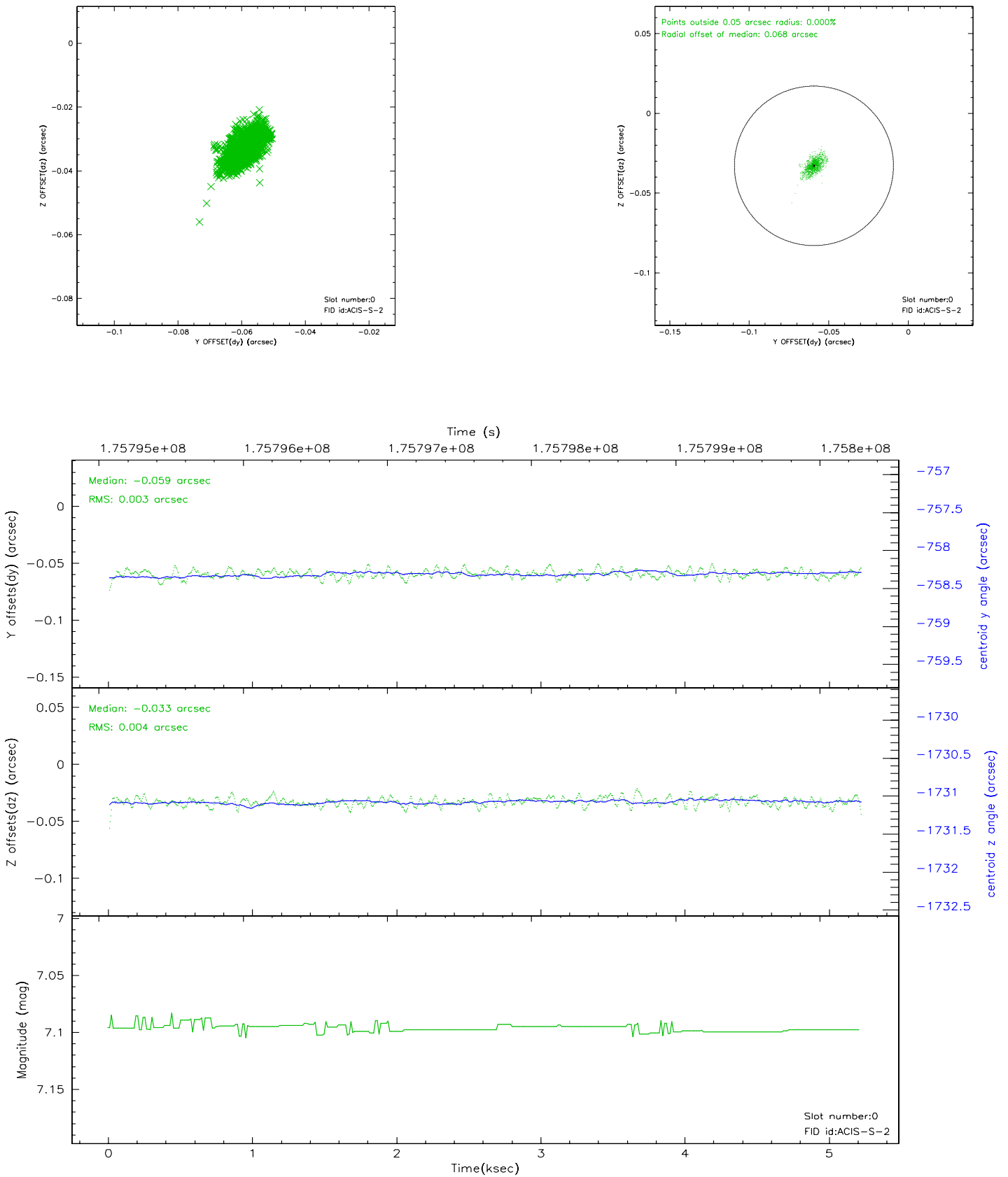


2.4.5 Slot 7

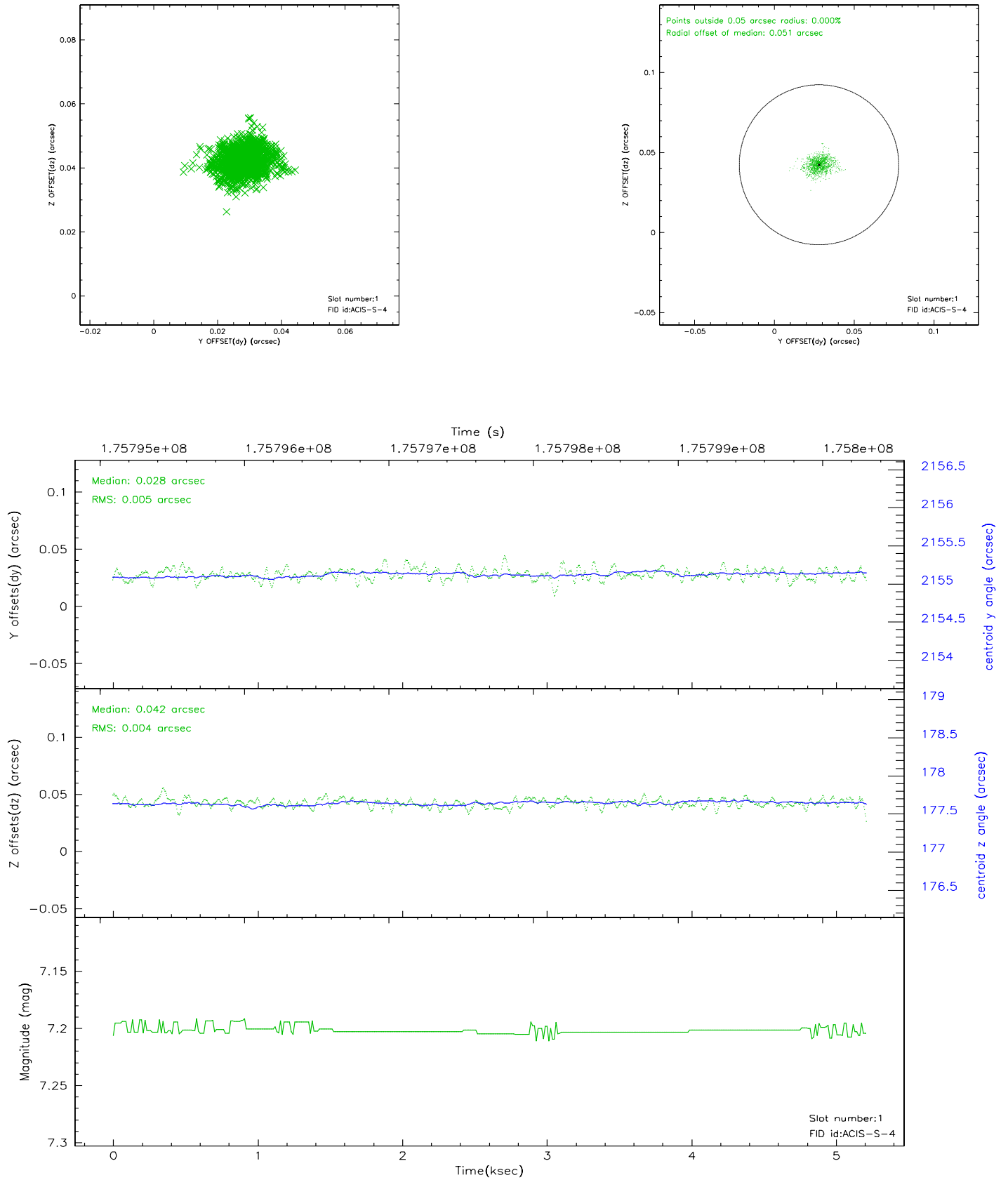


2.5 FID Slots

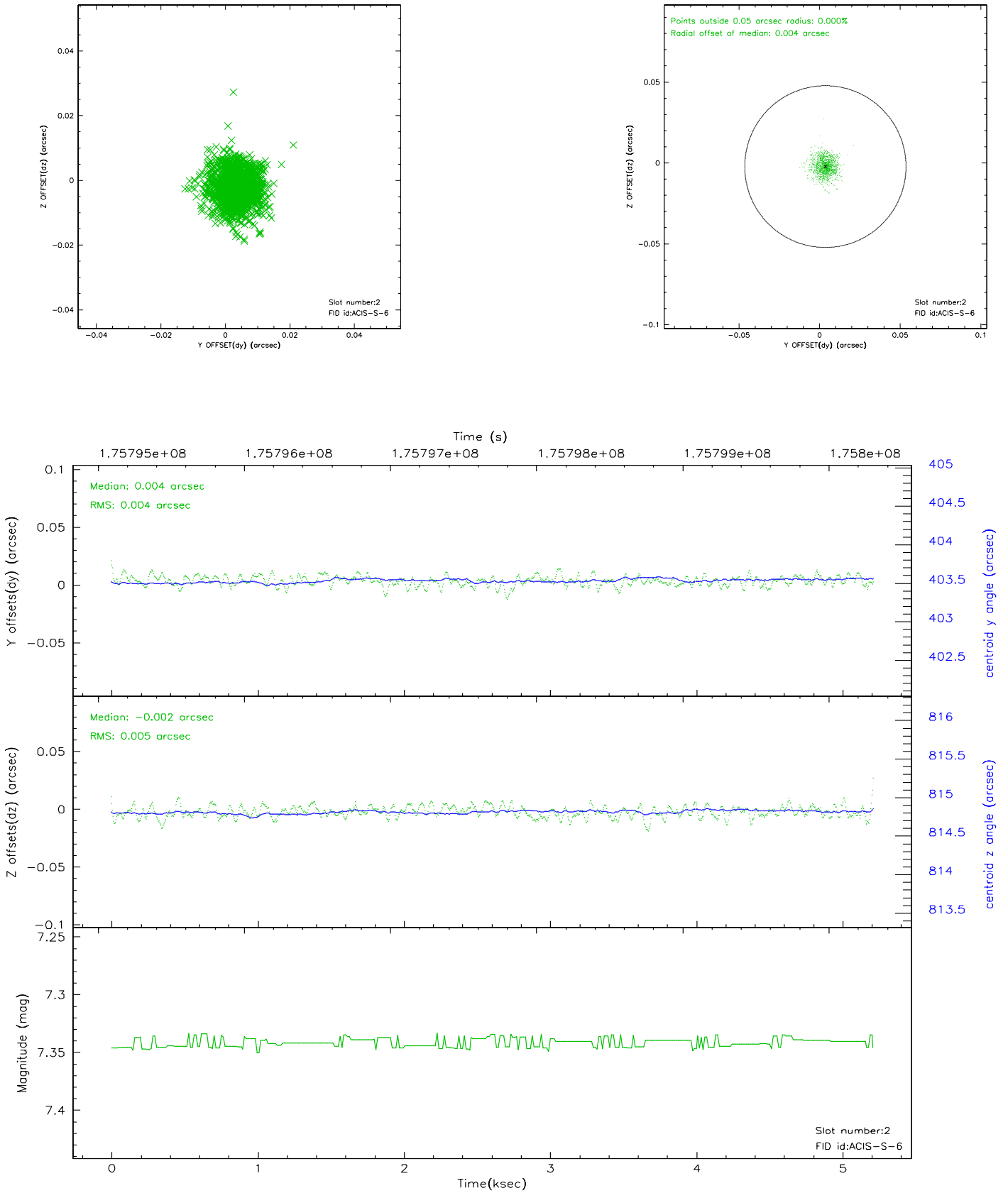
2.5.1 Slot 0



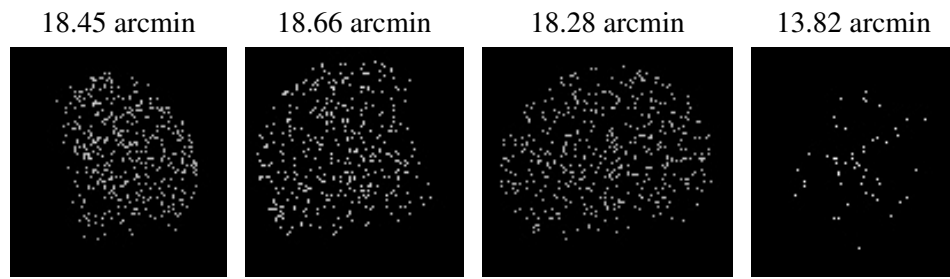
2.5.2 Slot 1



2.5.3 Slot 2



3 Point Sources



A Summary

A.1 Status

V&V Scientist	Beth Sundheim
V&V Date (YYYY-MM-DD)	2006.07.12
V&V Edition	1
V&V Disposition and Status	OK
V&V Charge Time	4.793

A.2 Comments