

# V&V Reference Report

## L2 ASCDS Version : 7.6.8

Observation 4021 - L2 Version 001  
Chandra X-Ray Center

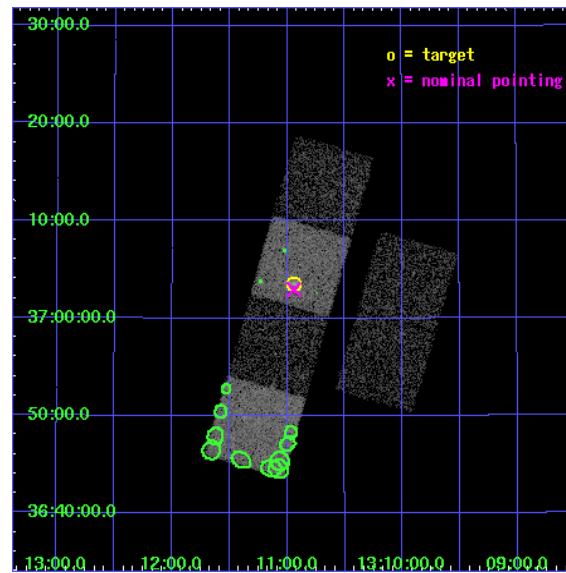
L2 Processing Date : Jul 11 2006

## Contents

<b>1</b>	<b>Front</b>	<b>2</b>
<b>2</b>	<b>OBI</b>	<b>3</b>
2.1	OBI . . . . .	3
2.1.1	Images . . . . .	3
2.1.2	Bias . . . . .	3
2.1.3	Parameters . . . . .	4
2.1.4	Events . . . . .	4
2.2	Compared Parameters . . . . .	5
2.3	Aspect . . . . .	6
2.4	Star Slots . . . . .	9
2.4.1	Slot 3 . . . . .	9
2.4.2	Slot 4 . . . . .	10
2.4.3	Slot 5 . . . . .	11
2.4.4	Slot 6 . . . . .	12
2.4.5	Slot 7 . . . . .	13
2.5	FID Slots . . . . .	14
2.5.1	Slot 0 . . . . .	14
2.5.2	Slot 1 . . . . .	15
2.5.3	Slot 2 . . . . .	16
<b>3</b>	<b>Point Sources</b>	<b>17</b>
<b>A</b>	<b>Summary</b>	<b>18</b>
A.1	Status . . . . .	18
A.2	Comments . . . . .	18

# 1 Front

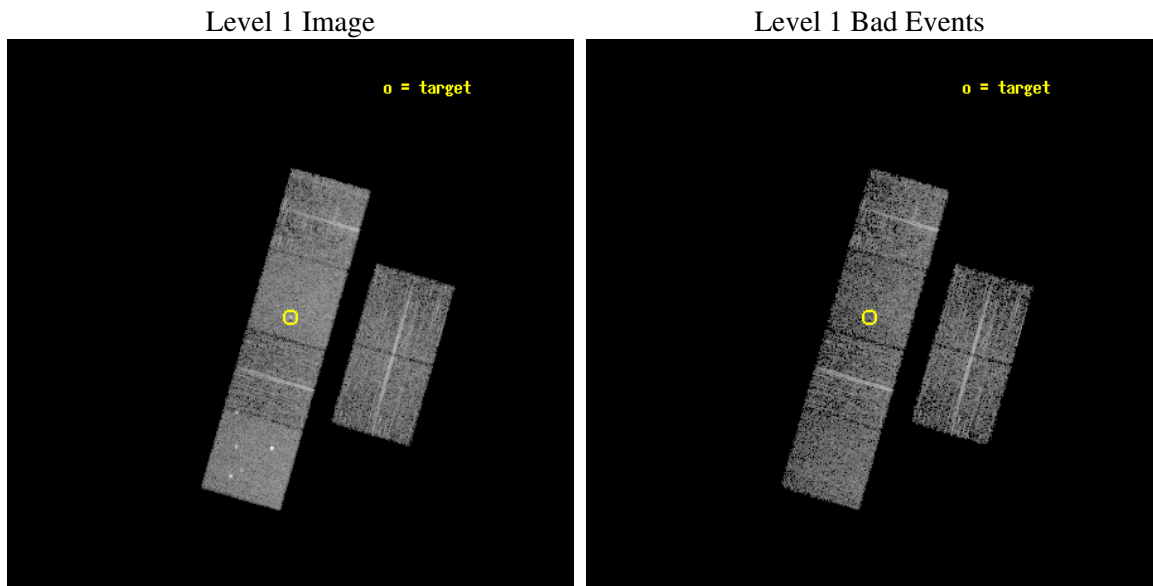
seq_num	700700
obs_id	4021
title	A CHANDRA SURVEY OF INFRARED-BRIGHT LINER GALAXIES
observer	Dr. Shobita Satyapal
object	NGC5005
dtcycle	0
cycle	P
ra_targ	197.734167
dec_targ	37.059167
ra_nom	197.73547167948
dec_nom	37.049500280819
roll_nom	286.0483508781
revision	2
ontime	4963.1999815106
livetime	4900.3529548645
ontime2	4963.1999815106
ontime3	4963.1999815106
ontime5	4963.1999815106
ontime6	4963.1999815106
ontime7	4963.1999815106
ontime8	4963.1999815106
l2events	47792



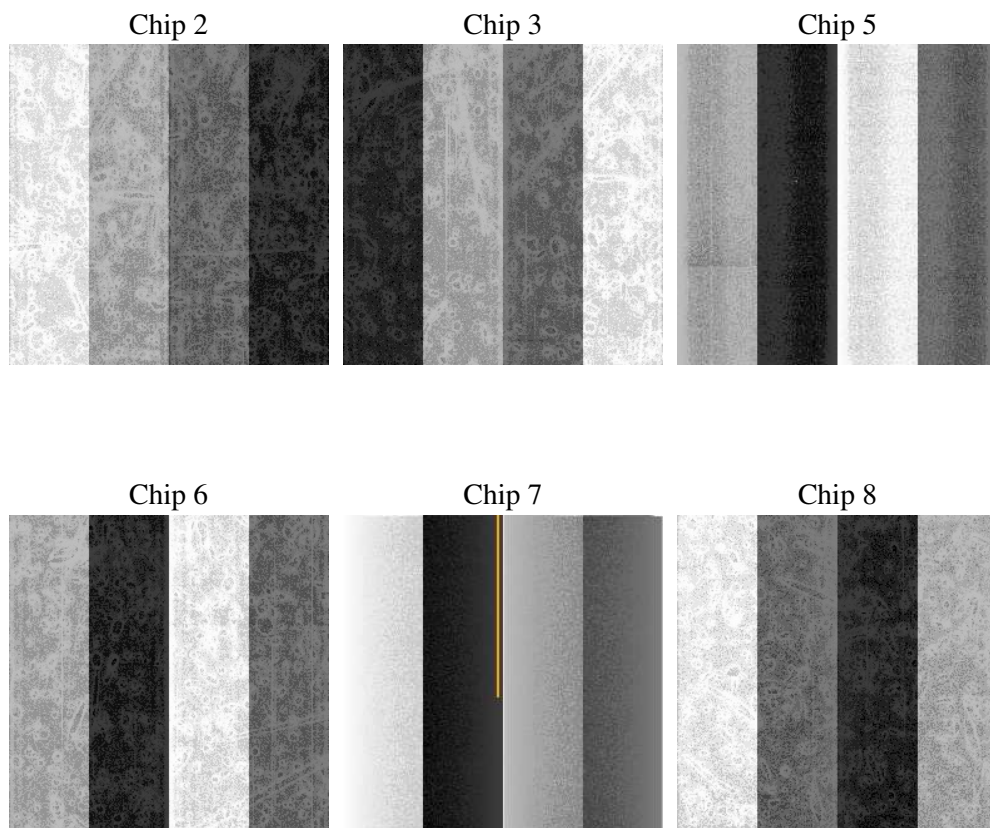
## 2 OBI

### 2.1 OBI

#### 2.1.1 Images



#### 2.1.2 Bias



### 2.1.3 Parameters

obi_num	0
ascdsver	7.6.8
caldsver	3.2.2
date	2006-07-11T09:27:44
revision	2

sched_exp_time	5000.000000
ontime	4968.4522327781
ontime2	4968.4522327781
ontime3	4968.4522028565
ontime5	4968.4522327781
ontime6	4968.4522327781
ontime7	4968.4522327781
ontime8	4968.4522327781
l1events	219859

### 2.1.4 Events

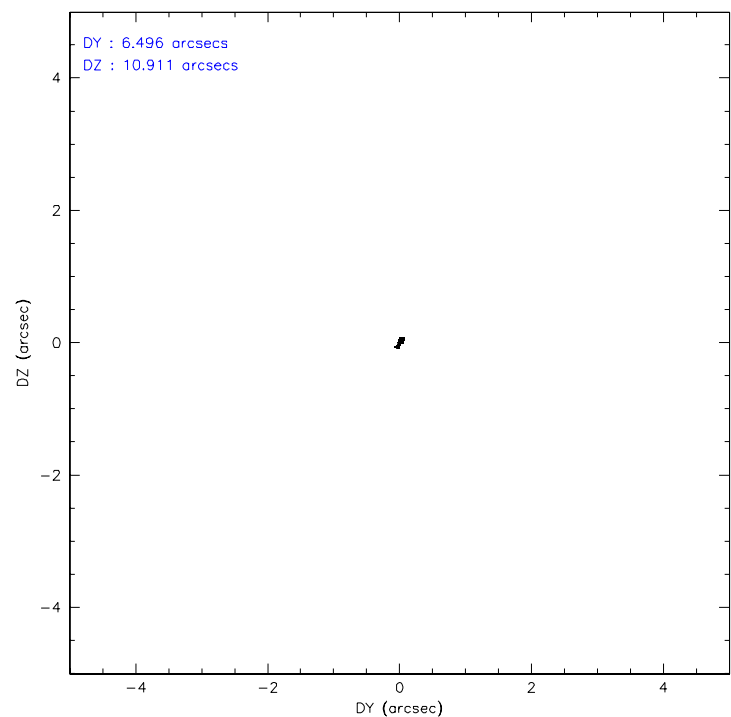
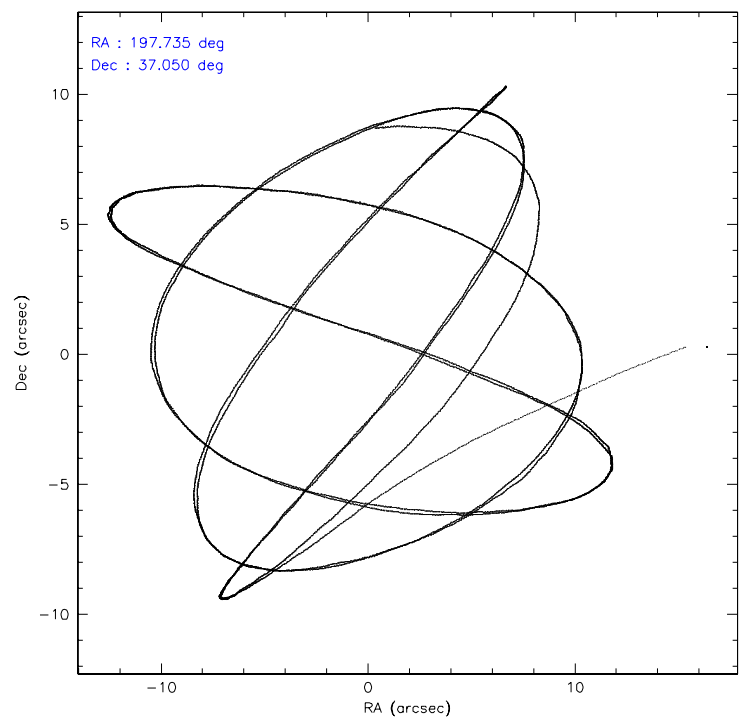
	ccd 2	ccd 3	ccd 5	ccd 6	ccd 7	ccd 8
level 1 events	30766	29974	45996	31783	42730	38610
rejected events	27128	26493	25068	28160	25895	30873
rejected %	88%	88%	54%	88%	60%	79%

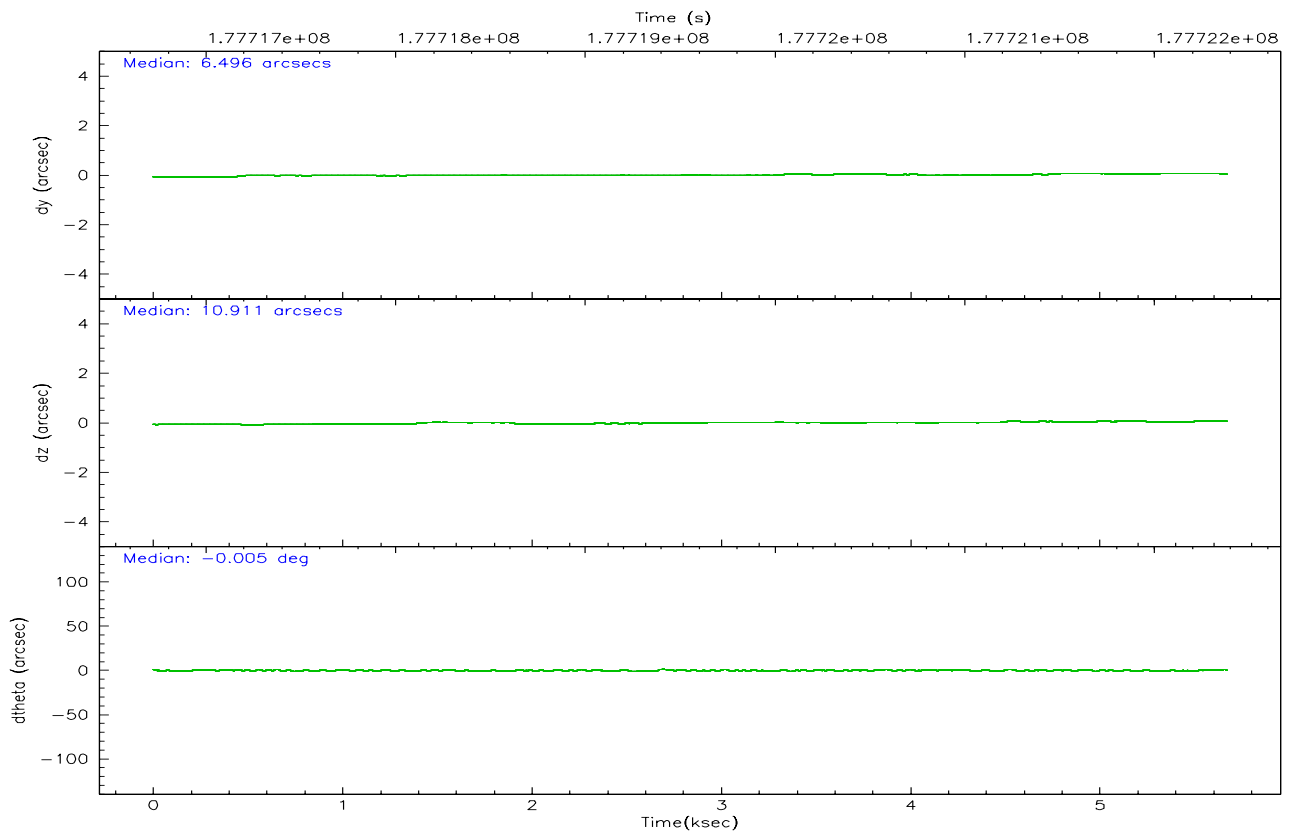
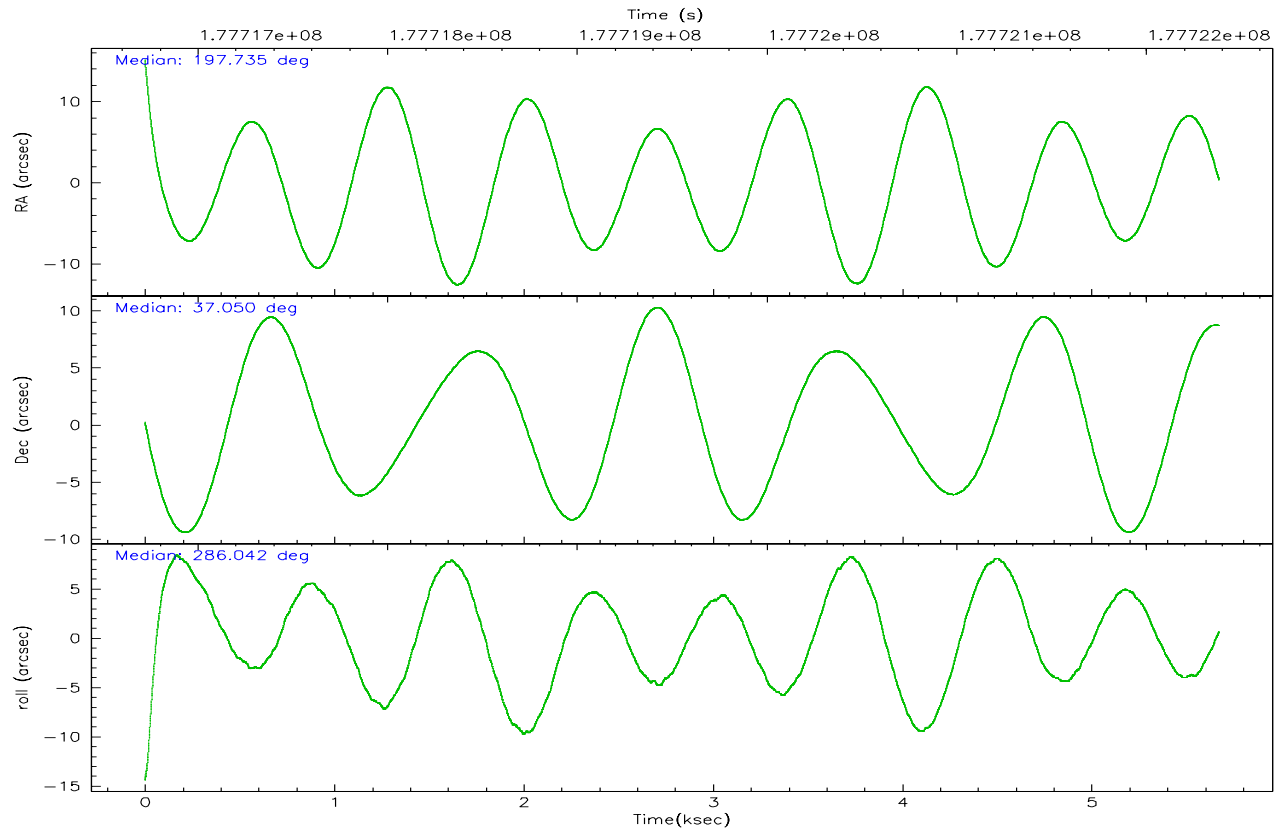
	ccd 2	ccd 3	ccd 5	ccd 6	ccd 7	ccd 8
grade 0 events	1570	1505	2919	1469	1400	2750
	5%	5%	6%	4%	3%	7%
grade 1 events	27	21	81	12	23	24
	0%	0%	0%	0%	0%	0%
grade 2 events	761	663	5937	698	4201	1542
	2%	2%	12%	2%	9%	3%
grade 3 events	374	348	437	344	933	925
	1%	1%	0%	1%	2%	2%
grade 4 events	352	366	471	362	902	859
	1%	1%	1%	1%	2%	2%
grade 5 events	1182	1294	2198	1420	2875	1841
	3%	4%	4%	4%	6%	4%
grade 6 events	584	601	11189	752	9411	1662
	1%	2%	24%	2%	22%	4%
grade 7 events	25916	25176	22764	26726	22985	29007
	84%	83%	49%	84%	53%	75%

## 2.2 Compared Parameters

Parameter	Planned	Actual	Parameter	Planned	Actual
Instrument	ACIS	ACIS	Obspar format version number	6	6
Detector	ACIS-235678	ACIS-235678	Obspar file type	PREDICTED	ACTUAL
Grating	NONE	NONE	Obspar update status	NONE	UPDATED
Data mode	FAINT	FAINT	On-chip summing requested	N	N
Observation mode	POINTING	POINTING	Subarray requested	NONE	NONE
Pointing RA	197.710536	197.7354716794771	Alternating exposures requested	N	N
Pointing Dec	37.068178	37.04950028081903	Primary exposure time	0.000000	3.2
Pointing Roll	285.906783	286.0483508781035			
SIM focus pos (mm)	-0.684267	-0.6828225247311905			
SIM defocus (mm)	0	0.001444936568705701			
SIM translation stage pos (mm)	-190.132523	-190.1400660498719			
SIM translation stage offset (mm)	0	0.00754346686406393			
Observation start time	177717392.184000	177716183.54826			
Observation start date	2003-08-19T21:55:28	2003-08-19T21:36:23			
Observation end time	177722392.184000	177722886.53605			
Observation end date	2003-08-19T23:18:48	2003-08-19T23:28:06			
Read mode	TIMED	TIMED			

2.3 Aspect





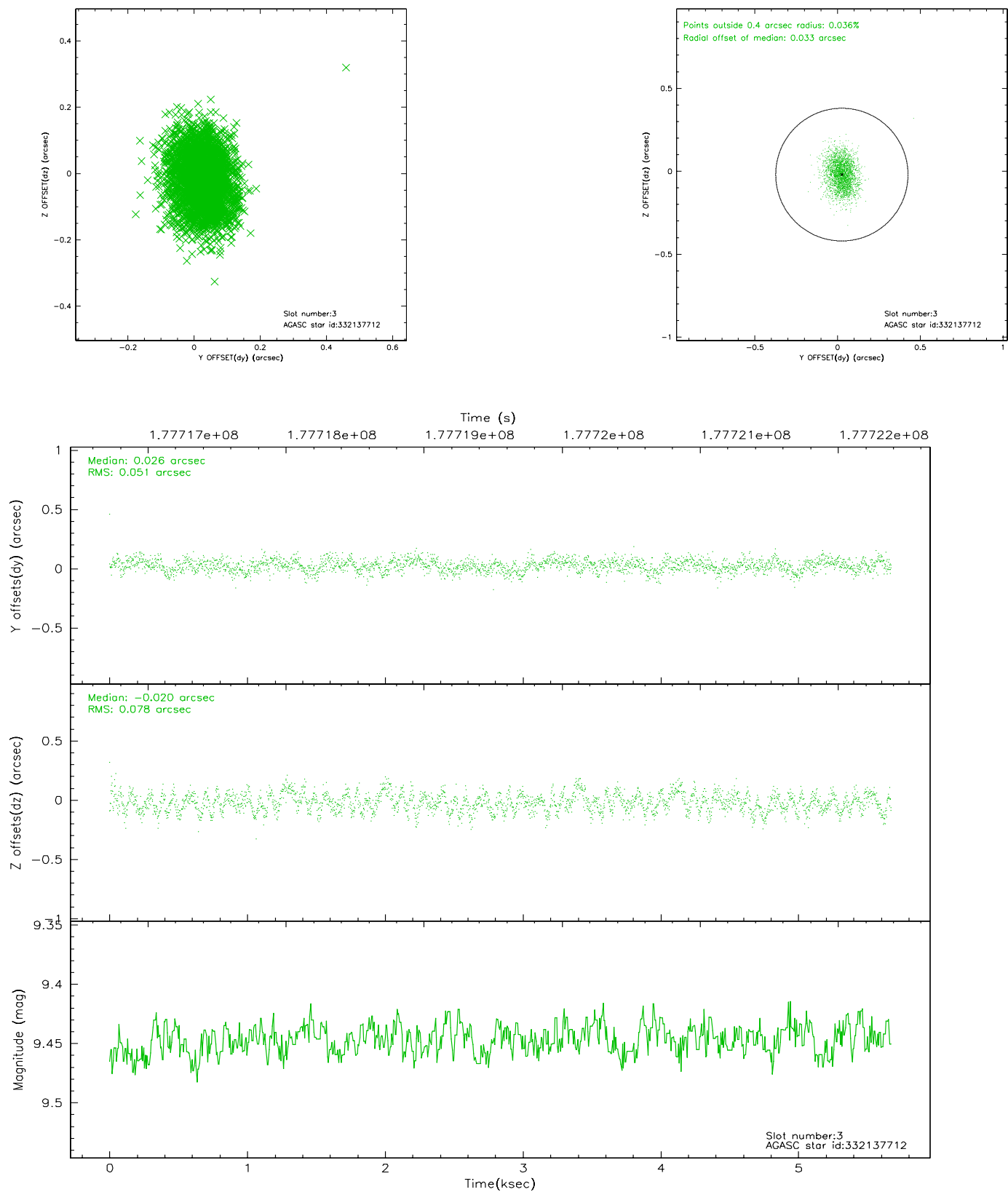
### Slot Statistics

slot	status	id	mag	n_pts	med_dy	med_dz	dr1	dr2	ra	dec	mean_y	mean_z
0	FID	ACIS-S-2	7.10	1384	-0.043	0.009	0.007	0.011	0.000000	0.000000	-759.26	-1732.18
1	FID	ACIS-S-4	7.20	1384	0.015	0.018	0.005	0.009	0.000000	0.000000	2153.57	175.26
2	FID	ACIS-S-5	7.23	1384	-0.004	-0.018	0.006	0.011	0.000000	0.000000	-1810.73	170.04
3	GUIDE	332137712	9.45	2768	0.026	-0.020	0.099	0.159	196.939140	37.081288	-660.87	-2115.15
4	GUIDE	332139608	8.17	2769	-0.172	-0.050	0.085	0.137	196.814680	37.265809	-1399.35	-2270.99
5	GUIDE	332142088	9.55	2768	0.212	0.094	0.101	0.161	197.774037	36.602770	1661.41	-283.09
6	GUIDE	332145344	8.46	2768	-0.020	-0.037	0.063	0.099	196.986512	36.975509	-256.46	-2091.78
7	GUIDE	333055200	9.38	2766	-0.043	0.021	0.084	0.138	198.276568	37.376986	-630.20	1862.62

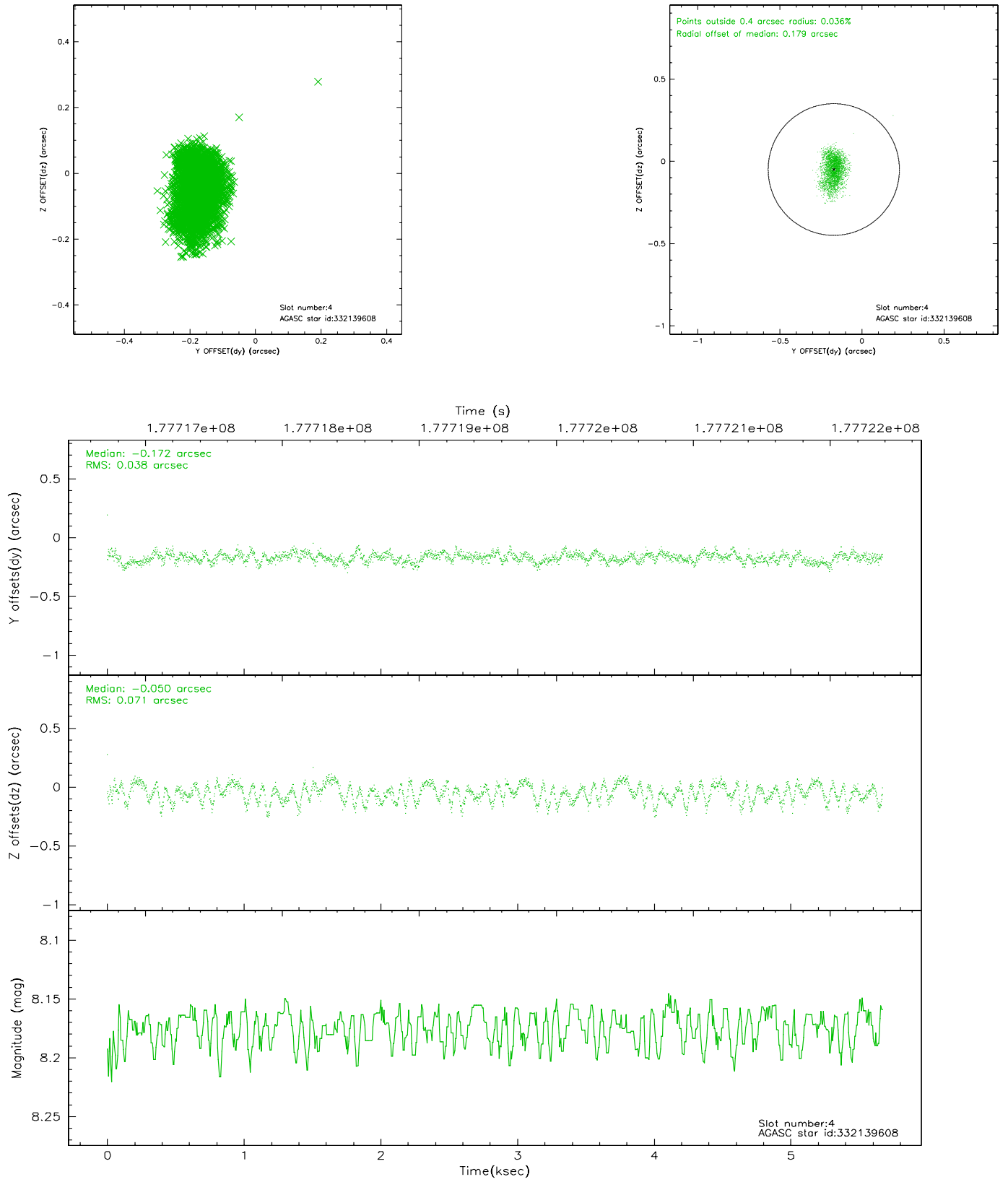


## 2.4 Star Slots

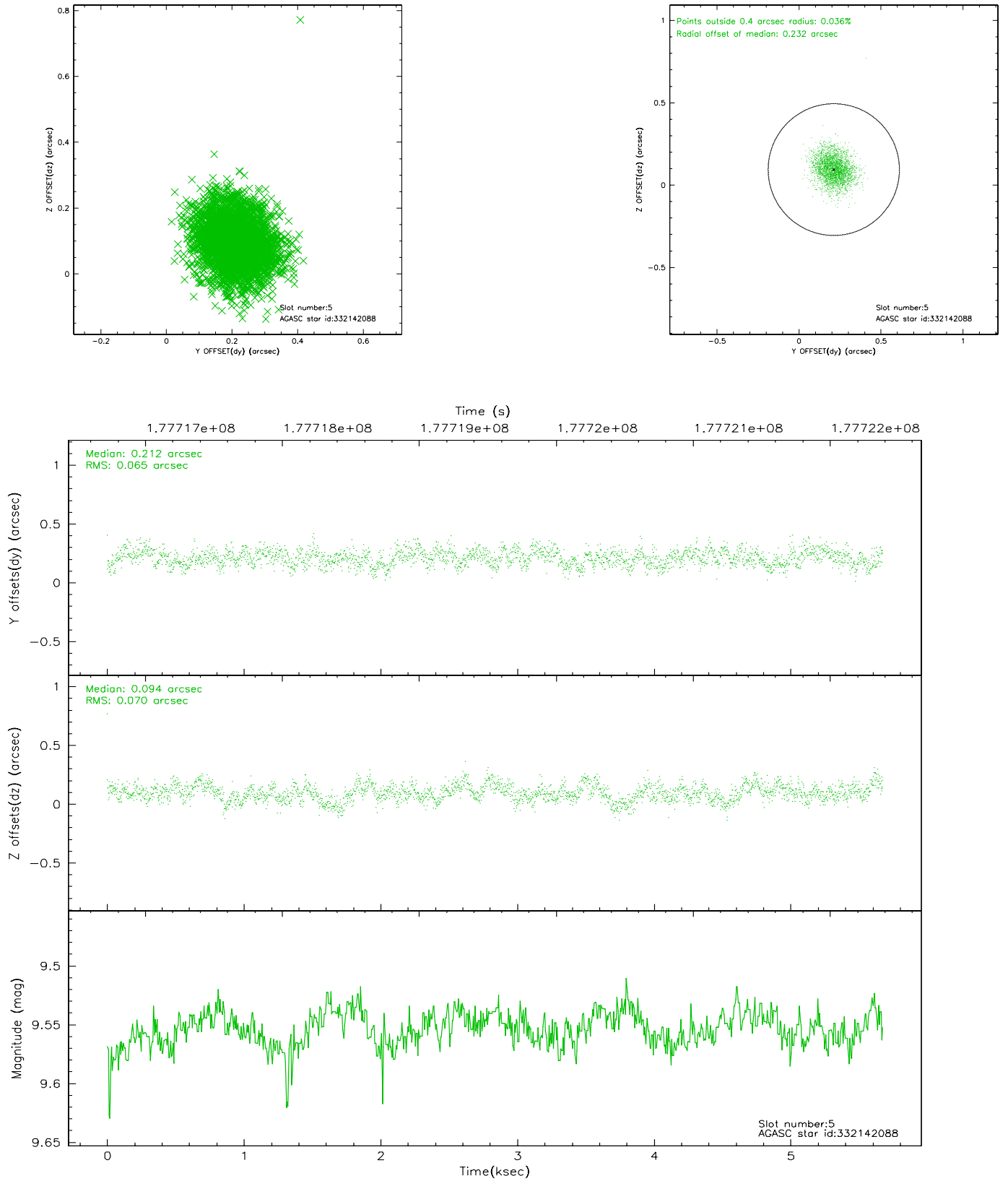
### 2.4.1 Slot 3



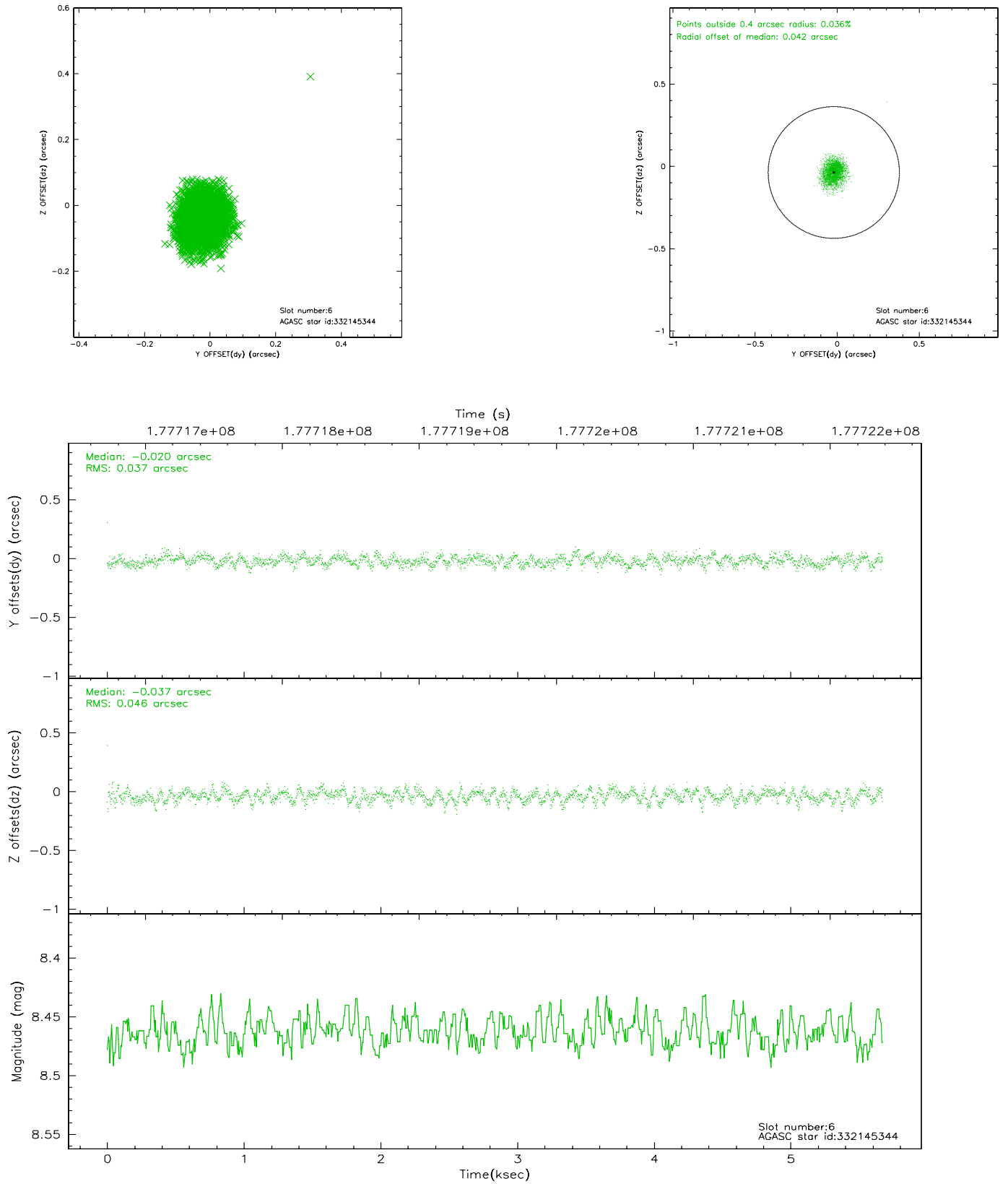
## 2.4.2 Slot 4



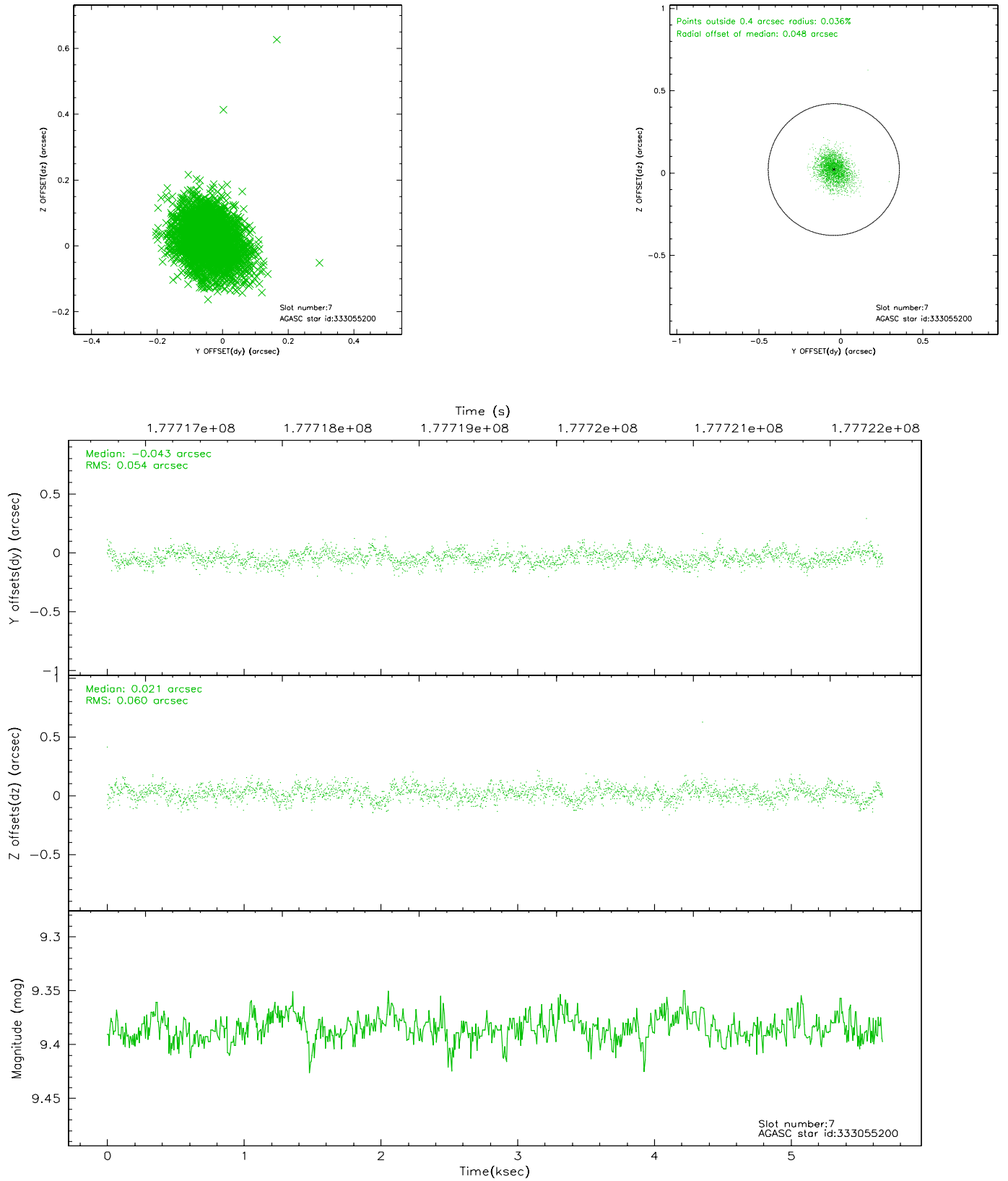
### 2.4.3 Slot 5



## 2.4.4 Slot 6

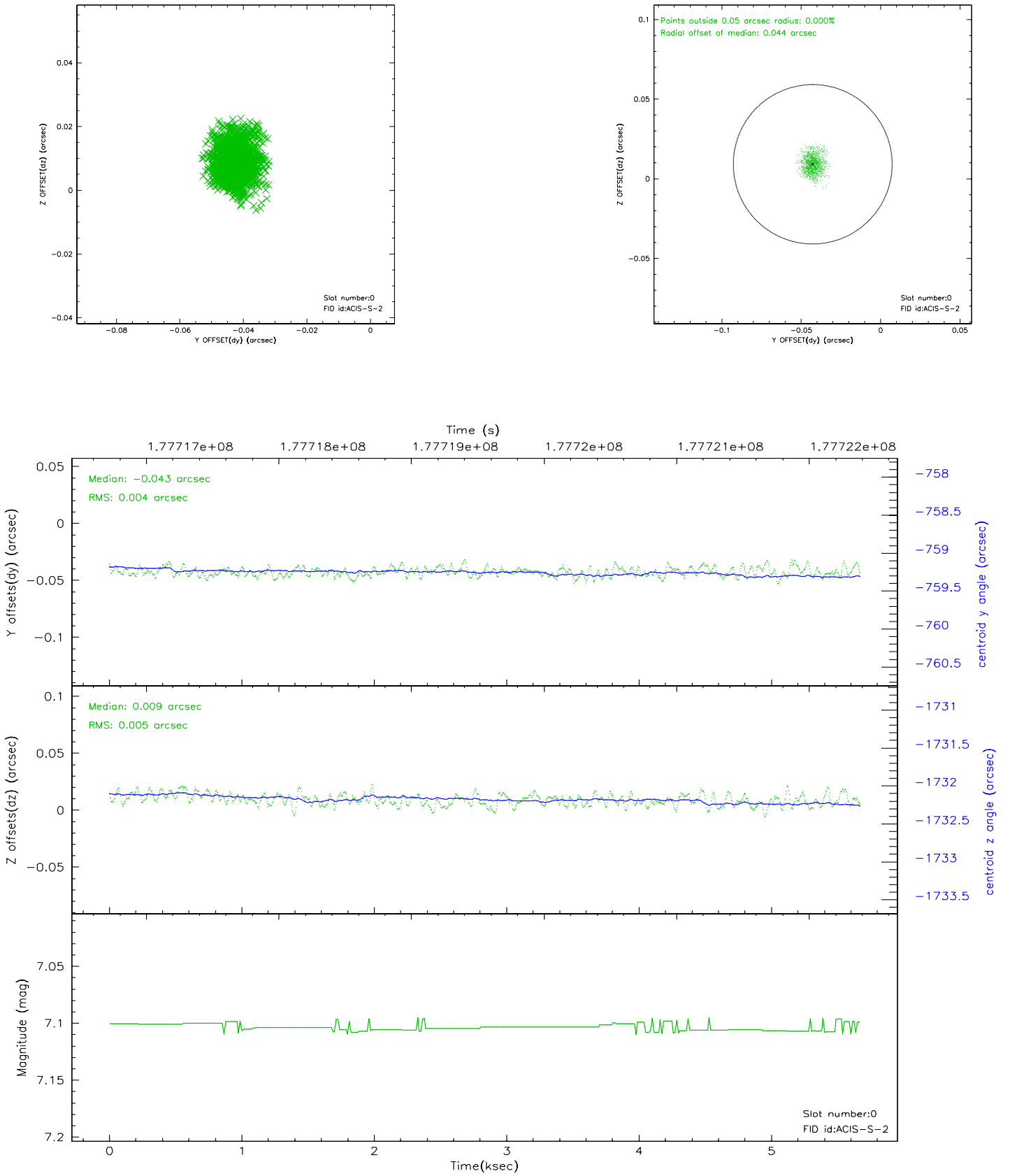


## 2.4.5 Slot 7

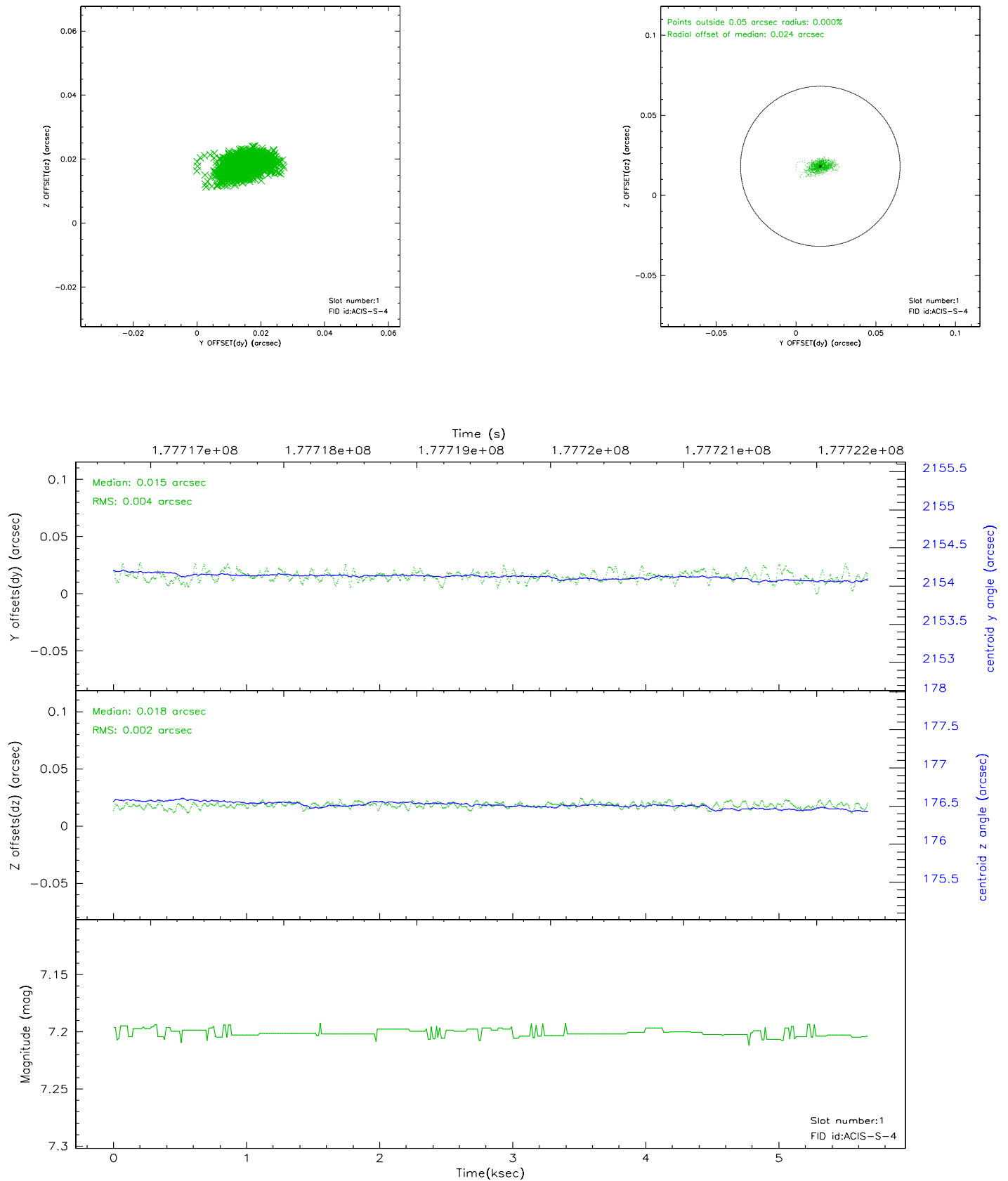


## 2.5 FID Slots

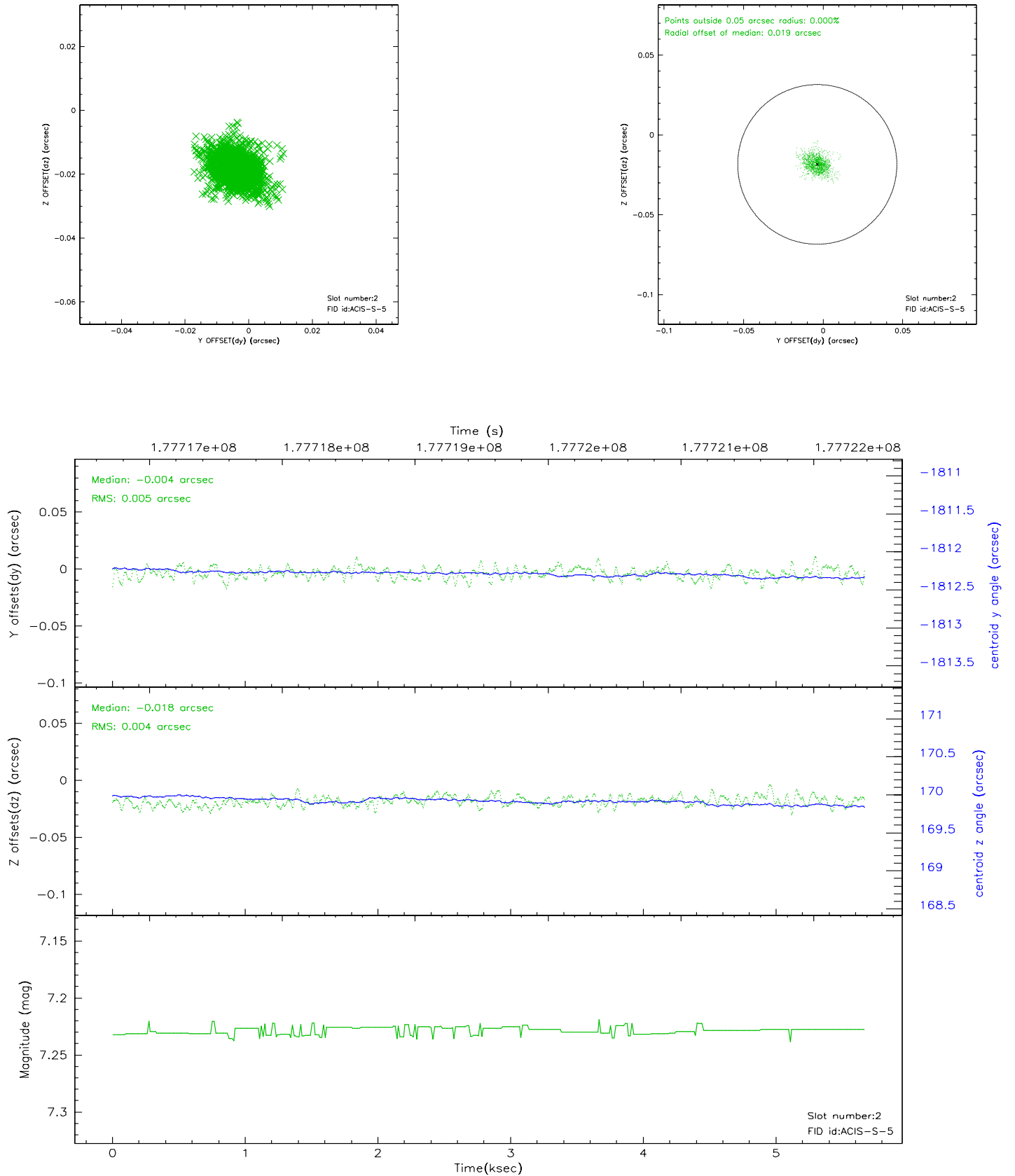
### 2.5.1 Slot 0



## 2.5.2 Slot 1

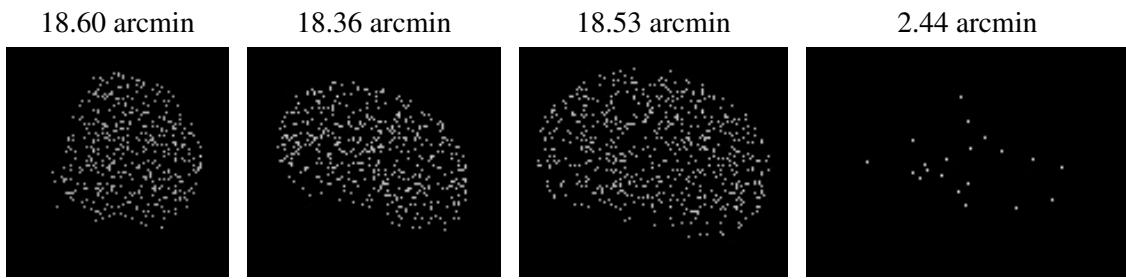


### 2.5.3 Slot 2





### 3 Point Sources



## A Summary

### A.1 Status

V&V Scientist	Jen Lauer
V&V Date (YYYY-MM-DD)	2006.07.11
V&V Edition	1
V&V Disposition and Status	OK
V&V Charge Time	4.963

### A.2 Comments