

# V&V Reference Report

## L2 ASCDS Version : 8.4.5

Observation 4018 - L2 Version 3  
Chandra X-Ray Center

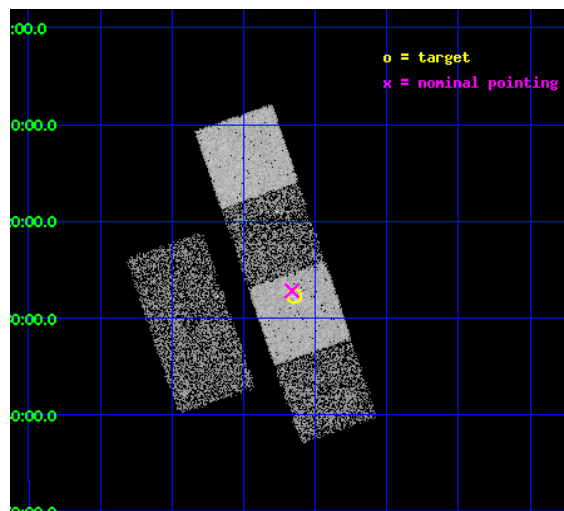
L2 Processing Date : Oct 22 2012

## Contents

<b>1</b>	<b>Front</b>	<b>2</b>
<b>2</b>	<b>OBI</b>	<b>3</b>
2.1	OBI . . . . .	3
2.1.1	Images . . . . .	3
2.1.2	Bias . . . . .	3
2.1.3	Parameters . . . . .	4
2.1.4	Events . . . . .	4
2.2	Compared Parameters . . . . .	5
2.3	Aspect . . . . .	6
2.4	Star Slots . . . . .	9
2.4.1	Slot 3 . . . . .	9
2.4.2	Slot 4 . . . . .	10
2.4.3	Slot 5 . . . . .	11
2.4.4	Slot 6 . . . . .	12
2.4.5	Slot 7 . . . . .	13
2.5	FID Slots . . . . .	14
2.5.1	Slot 0 . . . . .	14
2.5.2	Slot 1 . . . . .	15
2.5.3	Slot 2 . . . . .	16
<b>A</b>	<b>Summary</b>	<b>17</b>
A.1	Status . . . . .	17
A.2	Comments . . . . .	17

# 1 Front

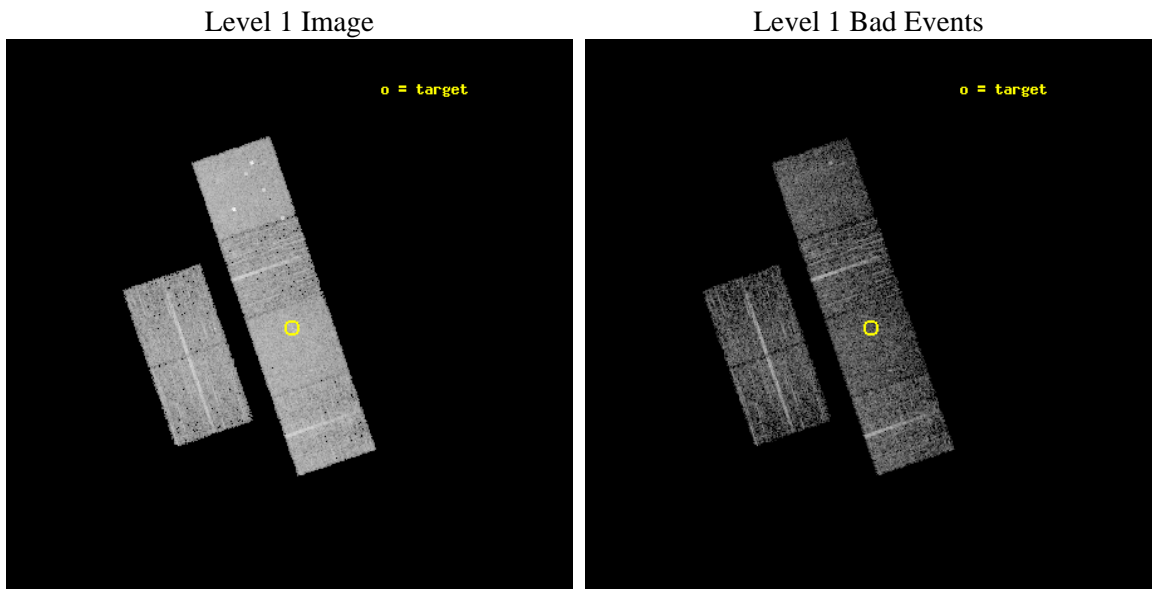
seq_num	700697	Sequence number
obs_id	4018	Observation id
title	A CHANDRA SURVEY OF INFRARED-BRIGHT LINER GALAXIES	Proposal title
observer	Dr. Shobita Satyapal	Principal investigator
object	NGC4666	Source name
dtcycle	0	&#160
cycle	P	events from which exps? Prim/Second/Both
ra_targ	191.28625	Observer's specified target RA [deg]
dec_targ	-0.461389	Observer's specified target Dec [deg]
ra_nom	191.29084454586	Nominal RA [deg]
dec_nom	-0.45298558583669	Nominal Dec [deg]
roll_nom	71.043229845894	Nominal Roll [deg]
revision	3	Processing version of data
ontime	4998.3999813795	Sum of GTIs [s]
livetime	4935.1072311401	Livetime [s]
ontime2	4998.3999813795	Sum of GTIs [s]
ontime3	4998.3999813795	Sum of GTIs [s]
ontime5	4998.3999813795	Sum of GTIs [s]
ontime6	4998.3999813795	Sum of GTIs [s]
ontime7	4998.3999813795	Sum of GTIs [s]
ontime8	4998.3999813795	Sum of GTIs [s]
l2events	51303	Number of level 2 events



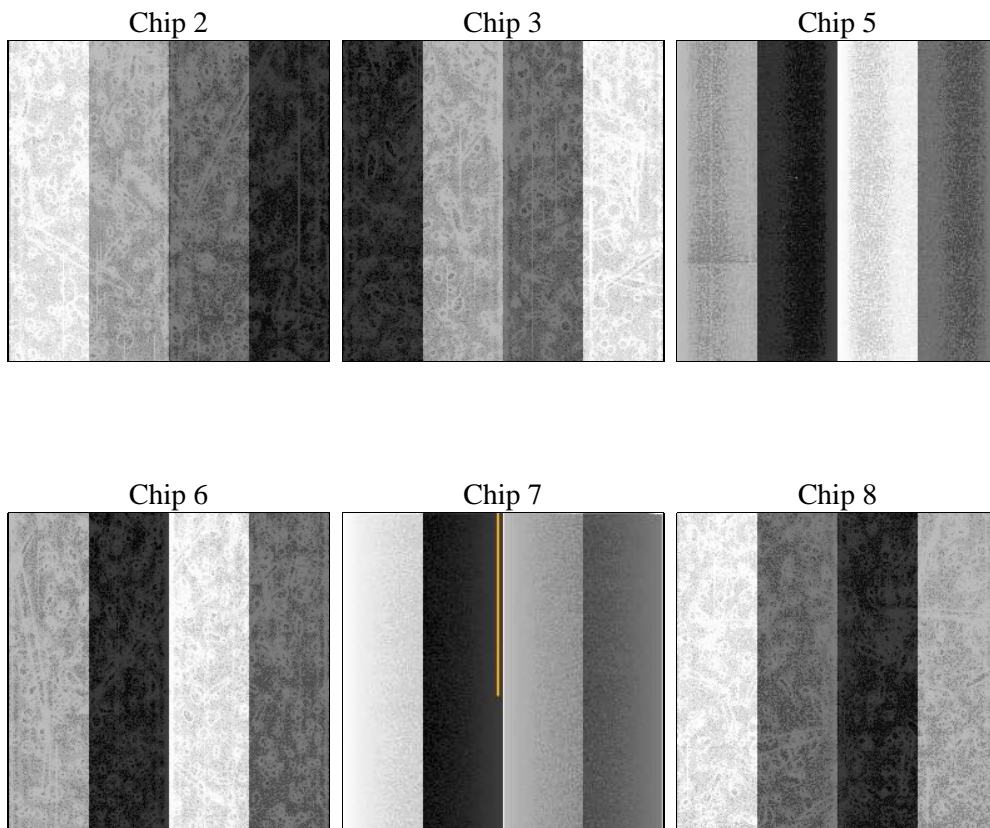
## 2 OBI

### 2.1 OBI

#### 2.1.1 Images



#### 2.1.2 Bias



### 2.1.3 Parameters

obi_num	0	Obi number	sched_exp_time	5039.000000	[s] Scheduled observation exposure time
ascdsver	8.4.5	Processing system revision	ontime	4998.3999813795	Sum of GTIs [s]
caldsver	4.5.2	&#160	ontime2	4998.3999813795	Sum of GTIs [s]
date	2012-10-22T07:28:17	Date and time of file creation	ontime3	4998.3999813795	Sum of GTIs [s]
revision	3	Processing version of data	ontime5	4998.3999813795	Sum of GTIs [s]
			ontime6	4998.3999813795	Sum of GTIs [s]
			ontime7	4998.3999813795	Sum of GTIs [s]
			ontime8	4998.3999813795	Sum of GTIs [s]
			l1events	227102	Number of level 1 events

### 2.1.4 Events

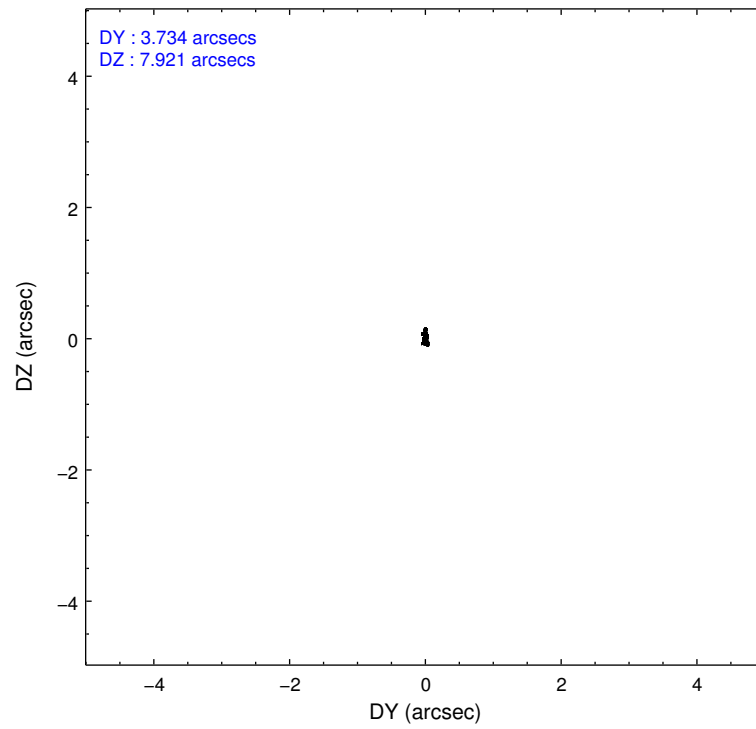
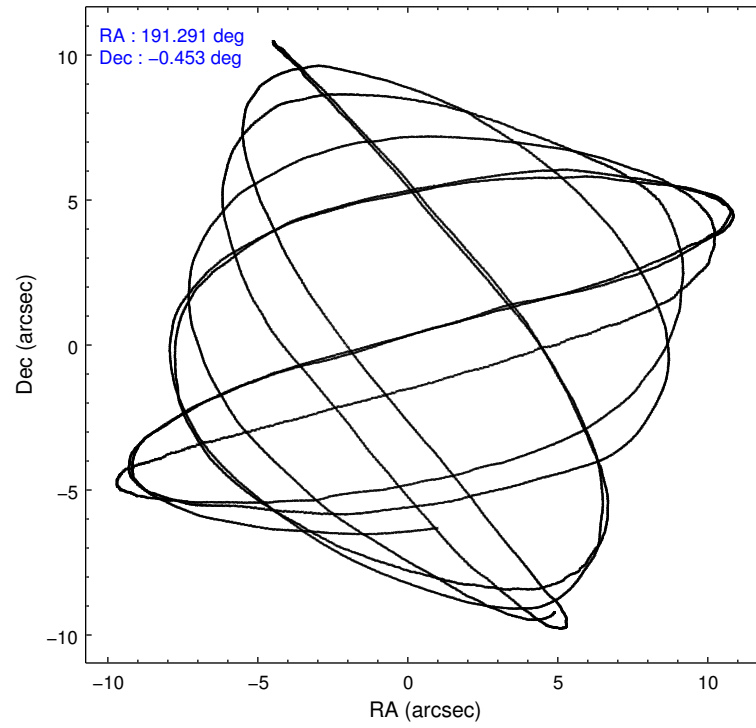
	ccd 2	ccd 3	ccd 5	ccd 6	ccd 7	ccd 8		ccd 2	ccd 3	ccd 5	ccd 6	ccd 7	ccd 8
level 1 events	30311	32597	48642	32266	43000	40286	grade 0 events	1674	1623	3135	1609	1905	2555
rejected events	26602	28858	25929	28385	24800	32216		5%	4%	6%	4%	4%	6%
rejected %	87%	88%	53%	87%	57%	79%	grade 1 events	20	24	90	13	38	18
								0%	0%	0%	0%	0%	0%
							grade 2 events	713	701	6584	766	3562	1748
								2%	2%	13%	2%	8%	4%
							grade 3 events	330	350	888	371	1677	865
								1%	1%	1%	1%	3%	2%
							grade 4 events	391	414	866	342	1629	776
								1%	1%	1%	1%	3%	1%
							grade 5 events	1239	1355	3669	1459	4136	1833
								4%	4%	7%	4%	9%	4%
							grade 6 events	602	655	11256	795	9440	2157
								1%	2%	23%	2%	21%	5%
							grade 7 events	25342	27475	22154	26911	20613	30334
								83%	84%	45%	83%	47%	75%

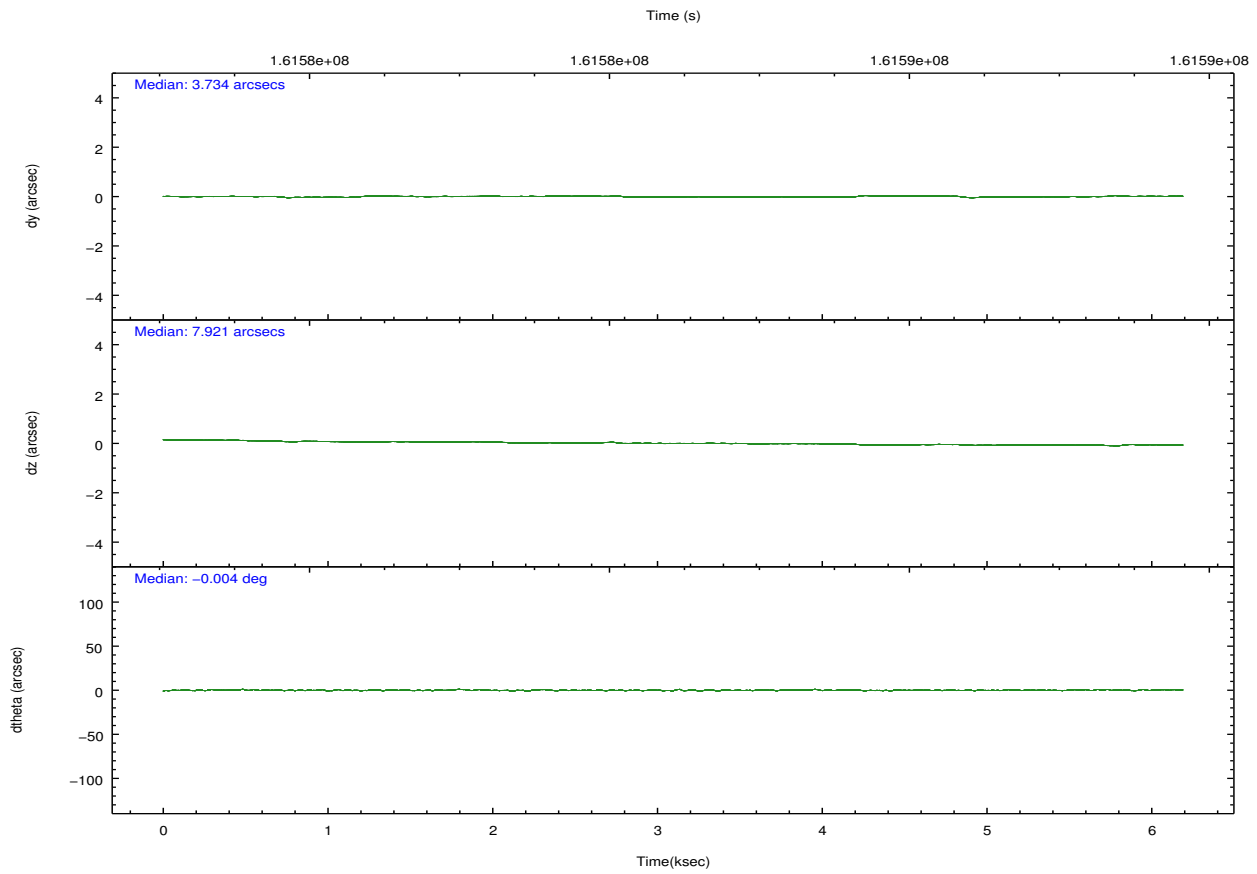
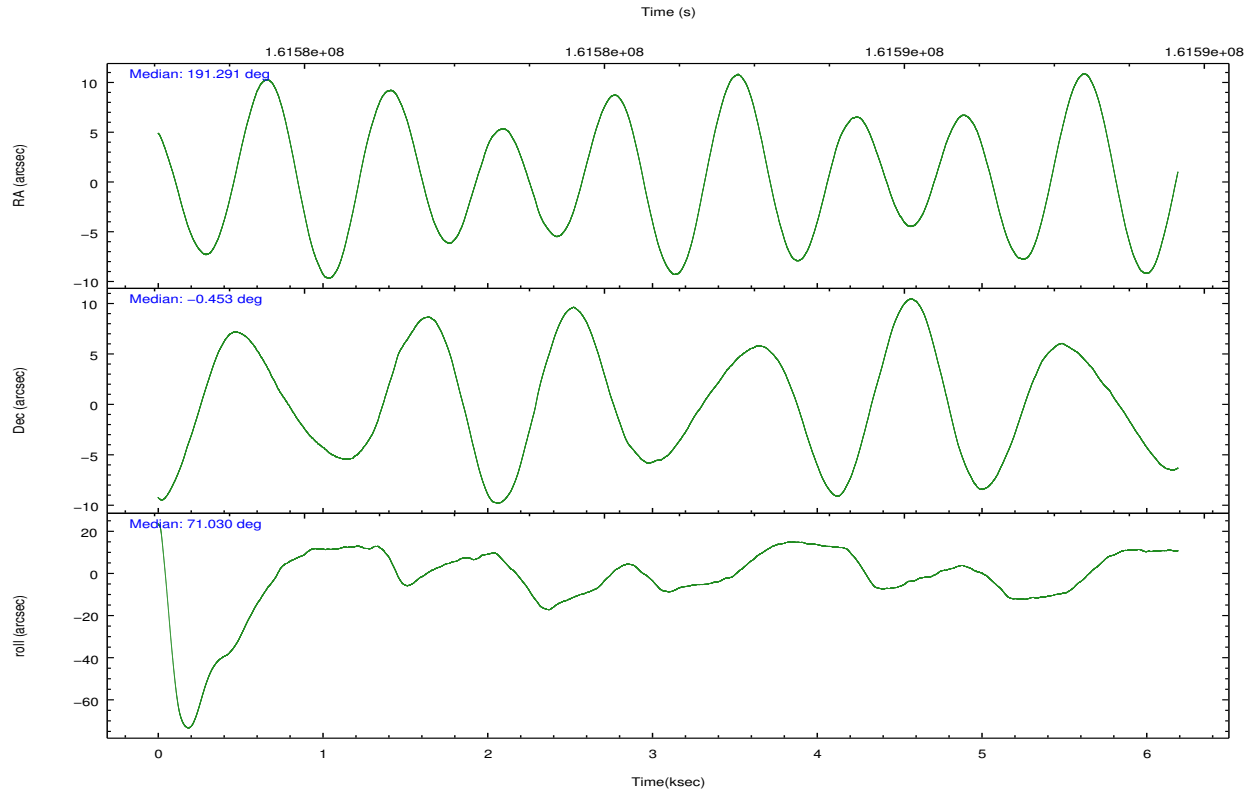


## 2.2 Compared Parameters

Parameter	Planned	Actual	Parameter	Planned	Actual
Instrument	ACIS	ACIS	Obspar format version number	7	7
Detector	ACIS-235678	ACIS-235678	Obspar file type	PREDICTED	ACTUAL
Grating	NONE	NONE	Obspar update status	NONE	UPDATED
Data mode	FAINT	FAINT	Number of optional ACIS chips dropped	0	0
Observation mode	POINTING	POINTING	On-chip summing requested	N	N
[deg] Pointing RA	191.296527	191.2908445458558	Subarray requested	NONE	NONE
[deg] Pointing Dec	-0.479592	-0.4529855858366881	Alternating exposures requested	N	N
[deg] Pointing Roll	70.886658	71.04322984589356	[s] Primary exposure time	0.000000	3.2
[mm] SIM focus pos	-0.684267	-0.6828225247311905			
[mm] SIM defocus	0	0.001444936568705701			
[mm] SIM translation stage pos	-190.132523	-190.1400660498719			
[mm] SIM translation stage offset	0	0.00754346686406393			
[s] Observation start time (MET)	161582479.184000	161581035.17711			
Observation start date	2003-02-14T04:00:15	2003-02-14T03:37:15			
[s] Observation end time (MET)	161587518.184000	161587748.41489			
Observation end date	2003-02-14T05:24:14	2003-02-14T05:29:08			
Read mode	TIMED	TIMED			

## 2.3 Aspect



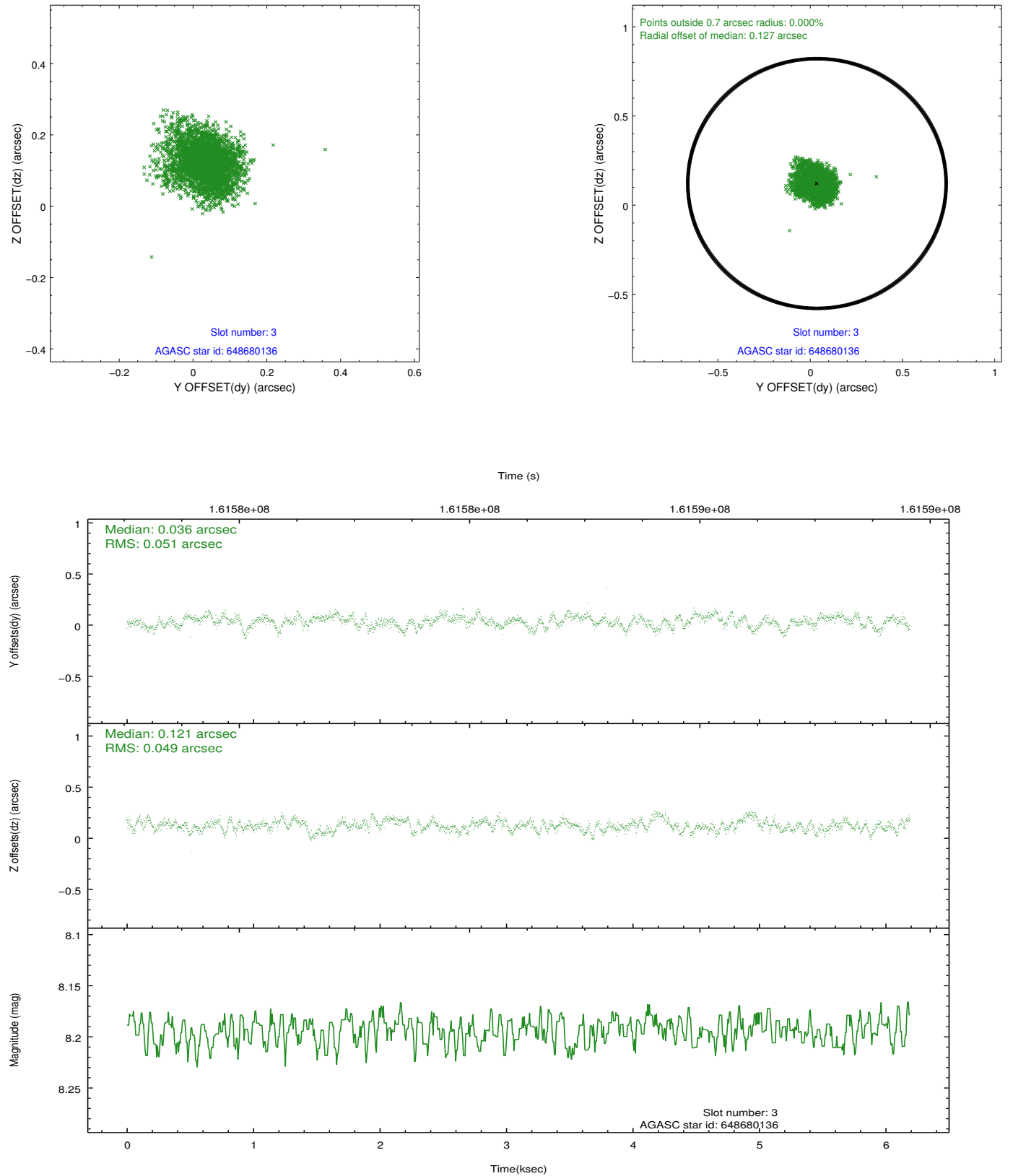


### Slot Statistics

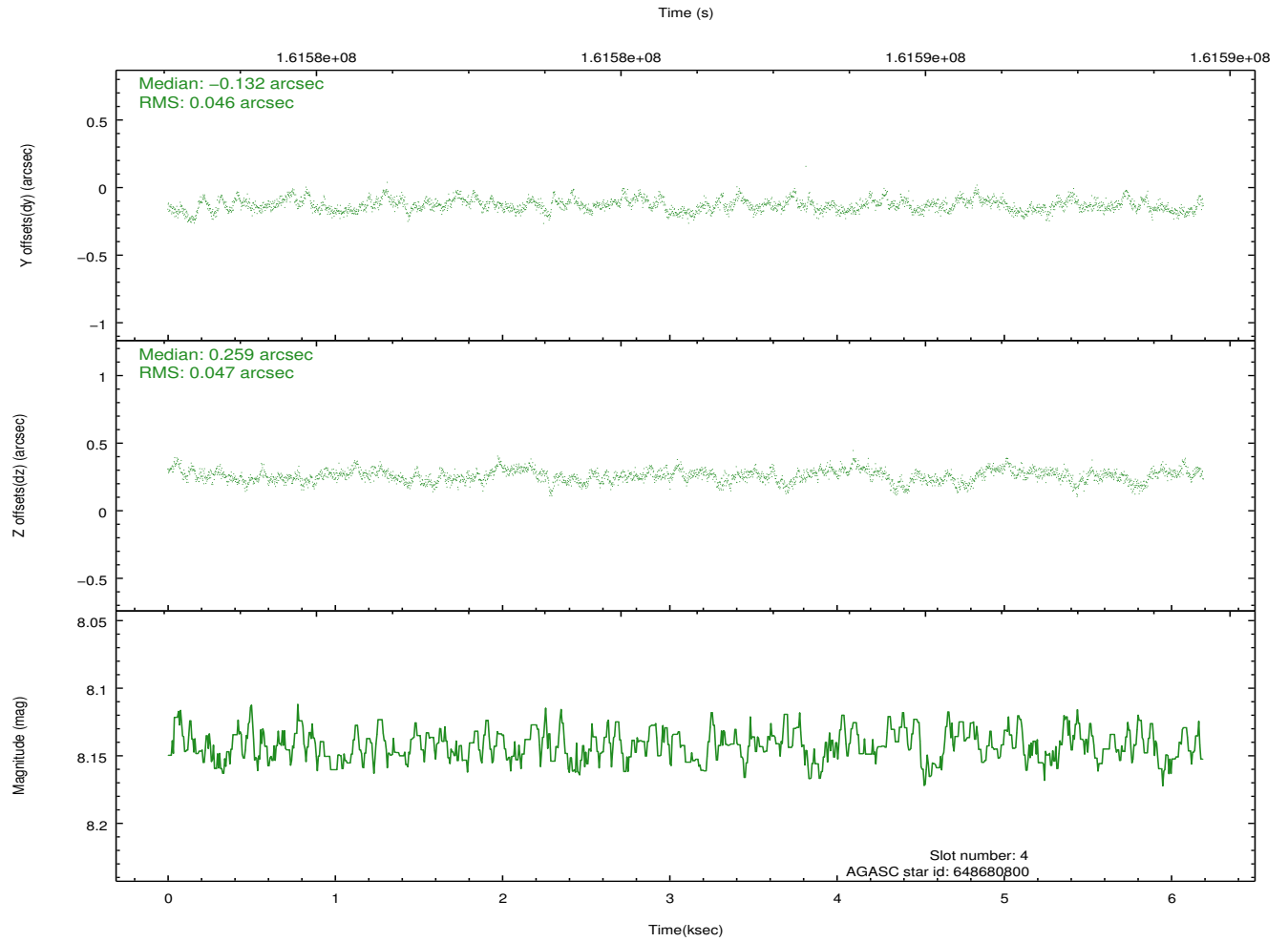
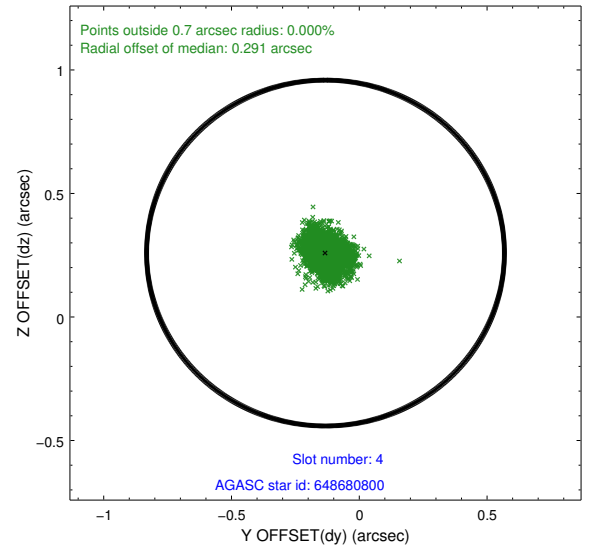
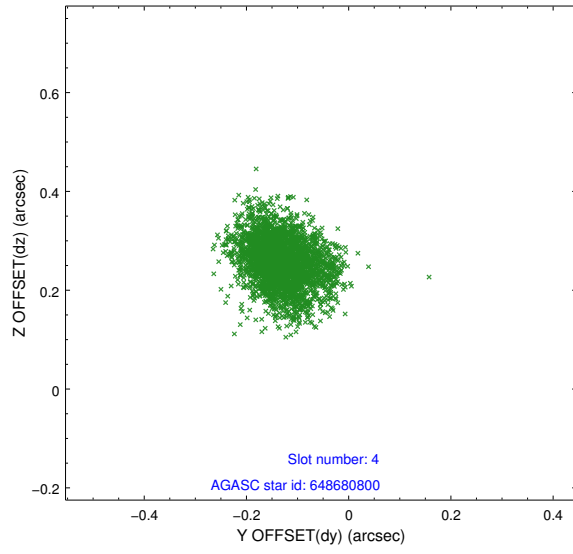
slot	status	id	mag	n_pts	med_dy	med_dz	dr1	dr2	ra	dec	mean_y	mean_z
0	FID	ACIS-S-2	7.12	1510	-0.008	-0.007	0.007	0.010	0.000000	0.000000	-756.41	-1729.12
1	FID	ACIS-S-4	7.21	1510	0.010	0.006	0.006	0.010	0.000000	0.000000	2156.46	178.37
2	FID	ACIS-S-5	7.24	1510	-0.033	0.010	0.006	0.010	0.000000	0.000000	-1808.04	173.16
3	GUIDE	648680136	8.19	3020	0.036	0.121	0.075	0.123	191.666772	-0.662438	-184.78	-1475.05
4	GUIDE	648680800	8.14	3021	-0.132	0.259	0.069	0.115	192.026585	-0.359285	1270.40	-2341.46
5	GUIDE	648681984	8.17	3020	0.040	0.131	0.076	0.118	191.634926	-0.821546	-763.11	-1555.16
6	GUIDE	648683608	10.18	3018	-0.045	-0.330	0.152	0.255	190.700546	-0.202114	240.82	2353.27
7	GUIDE	648683704	9.83	2941	0.105	-0.185	0.110	0.188	190.775135	-0.538340	-814.26	1704.38

## 2.4 Star Slots

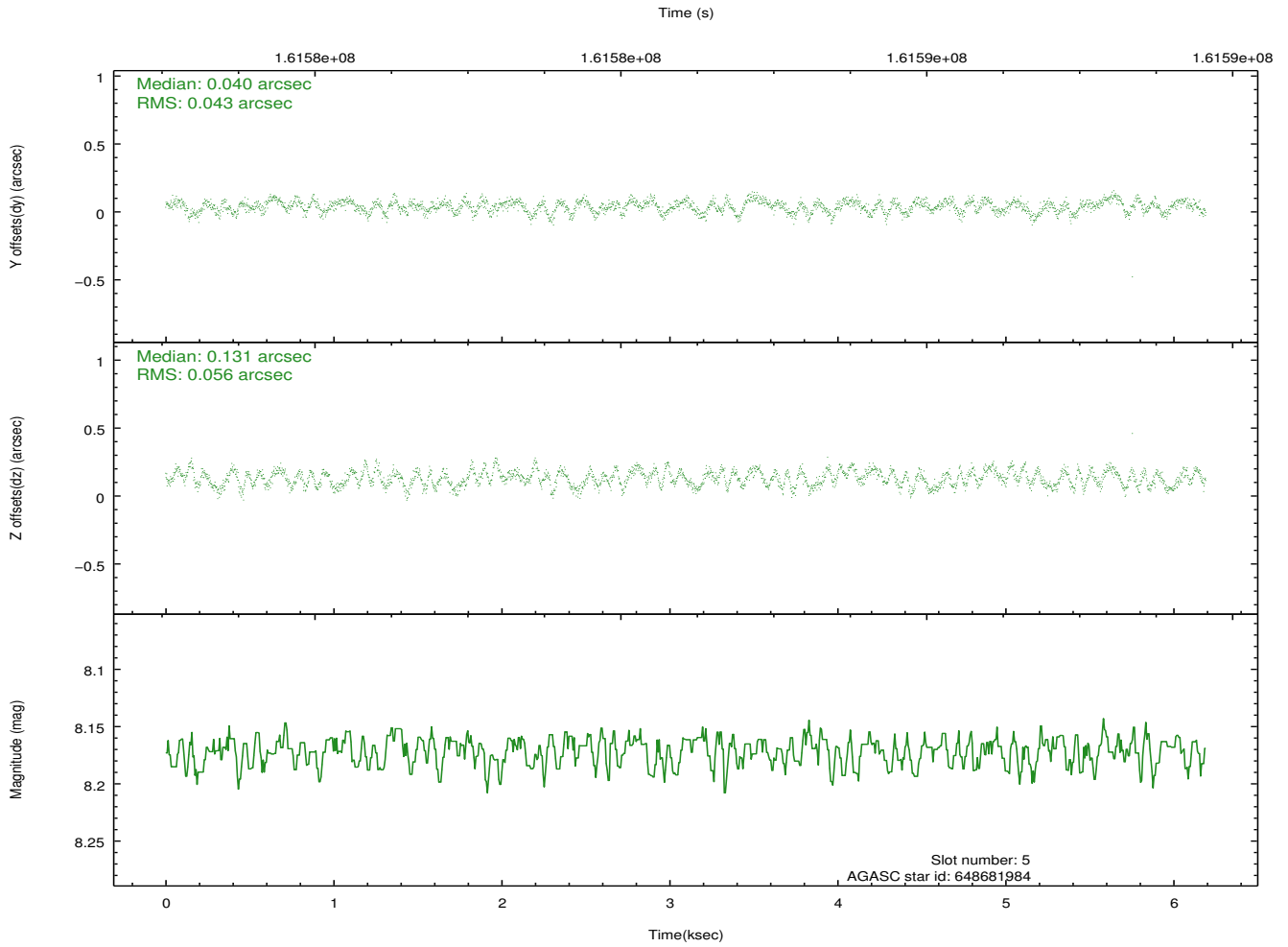
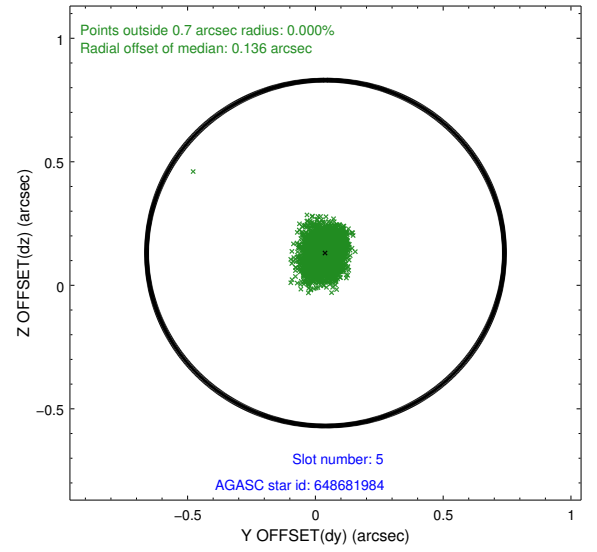
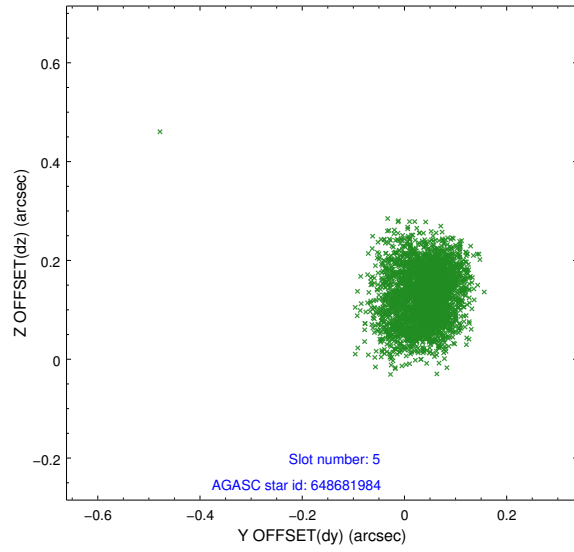
### 2.4.1 Slot 3



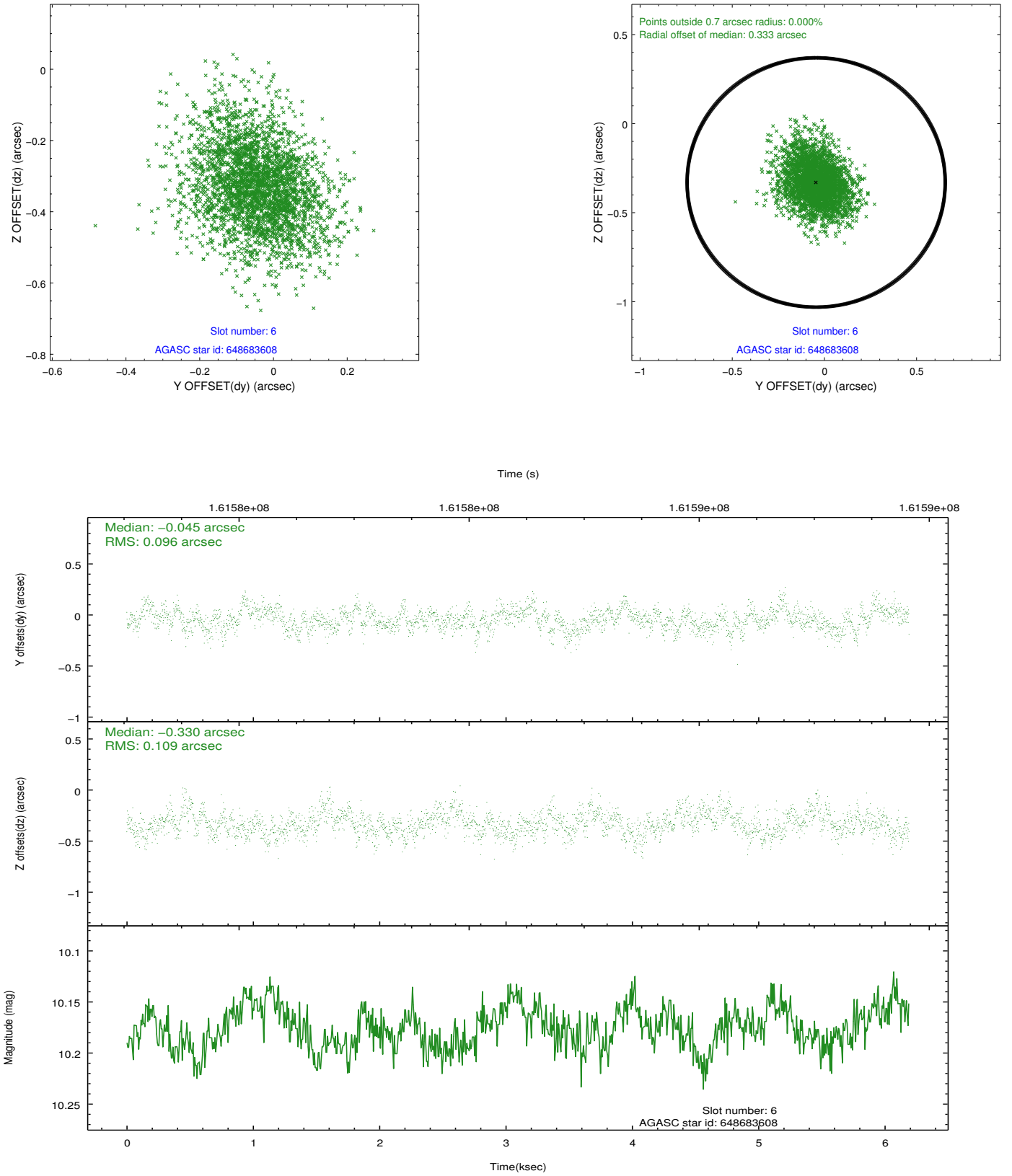
## 2.4.2 Slot 4



### 2.4.3 Slot 5

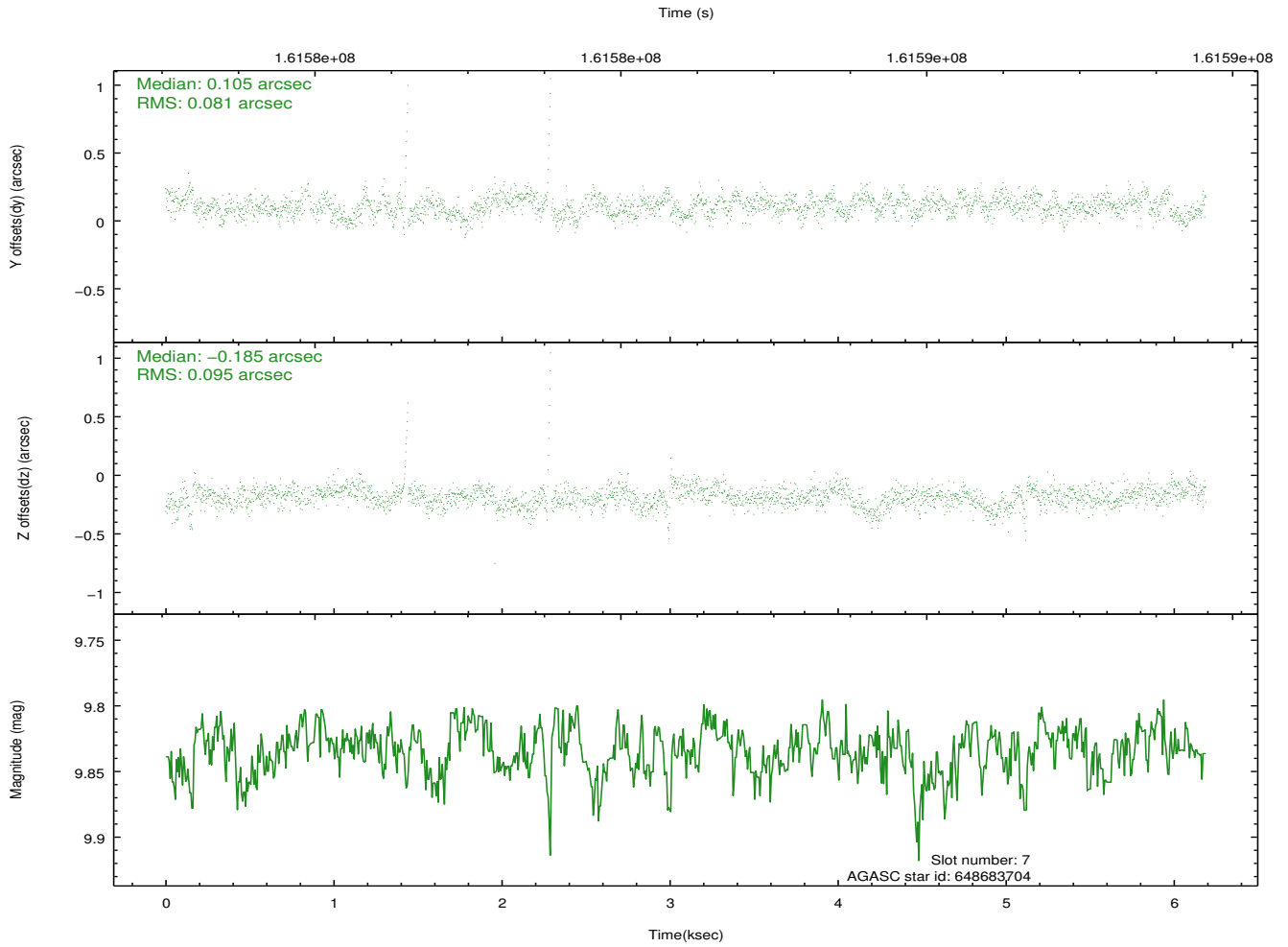
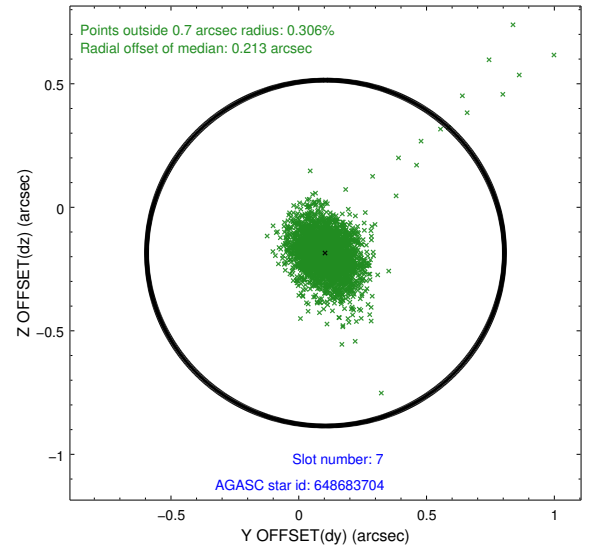
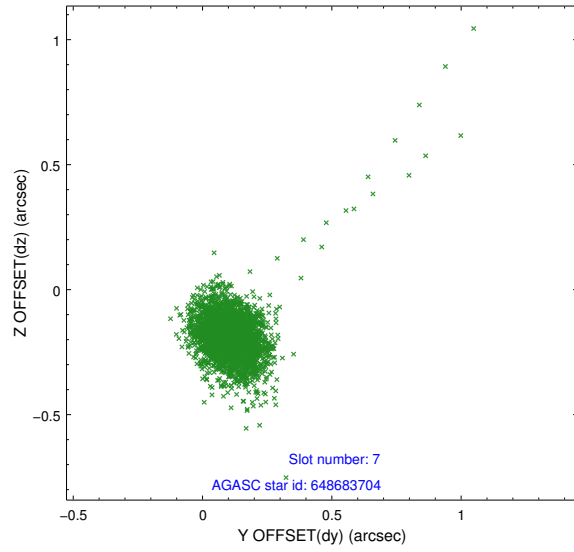


## 2.4.4 Slot 6



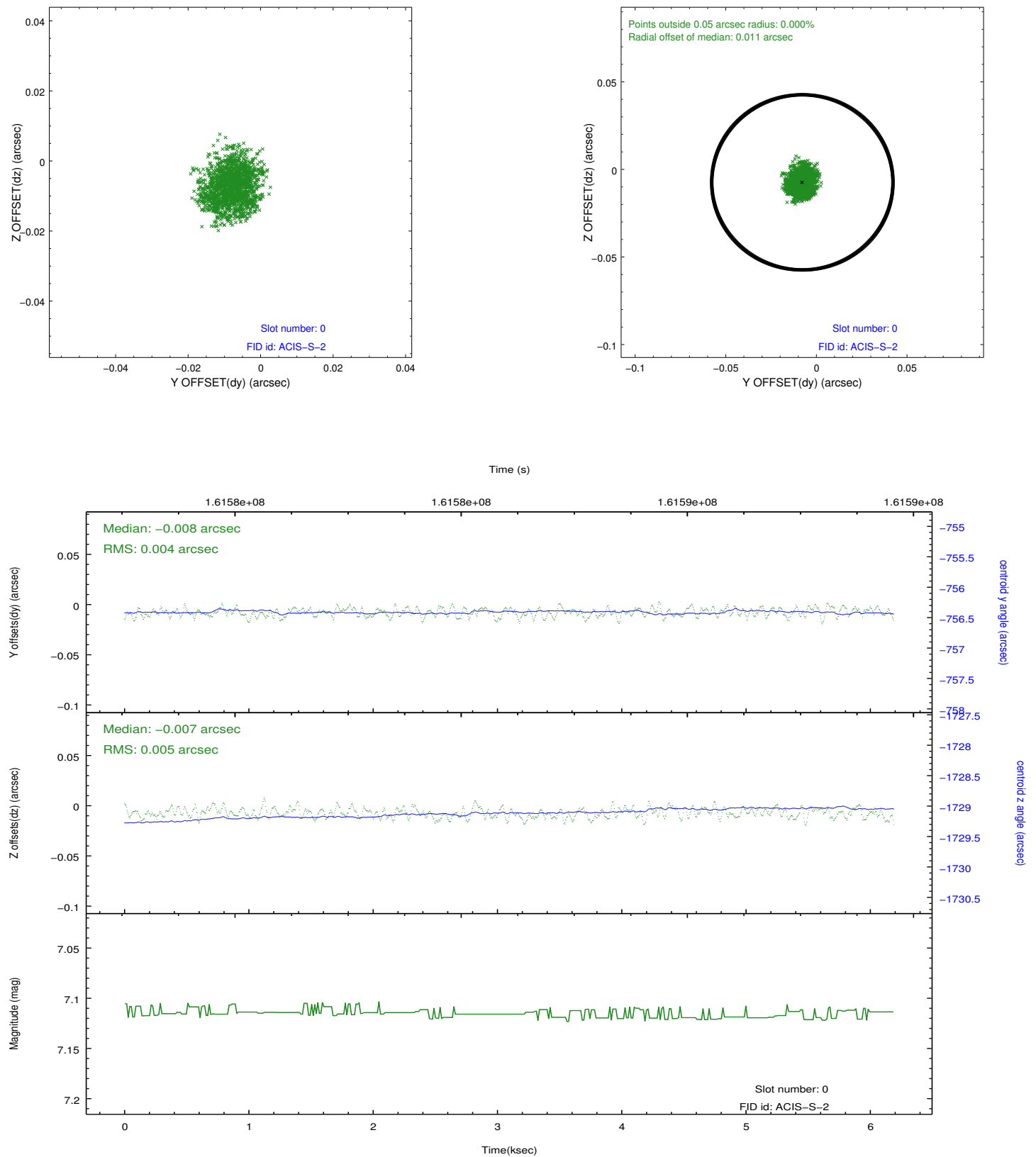


## 2.4.5 Slot 7

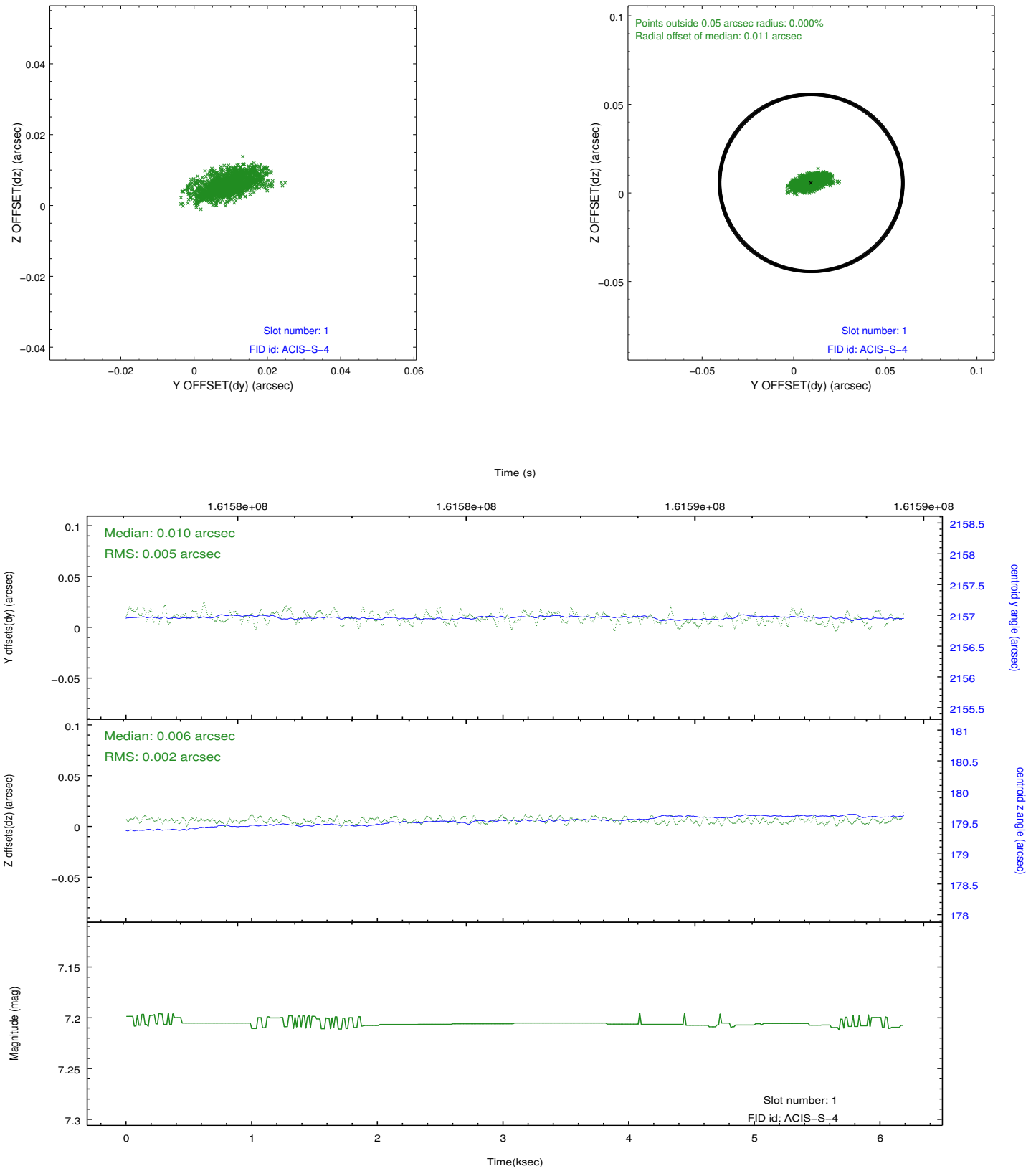


## 2.5 FID Slots

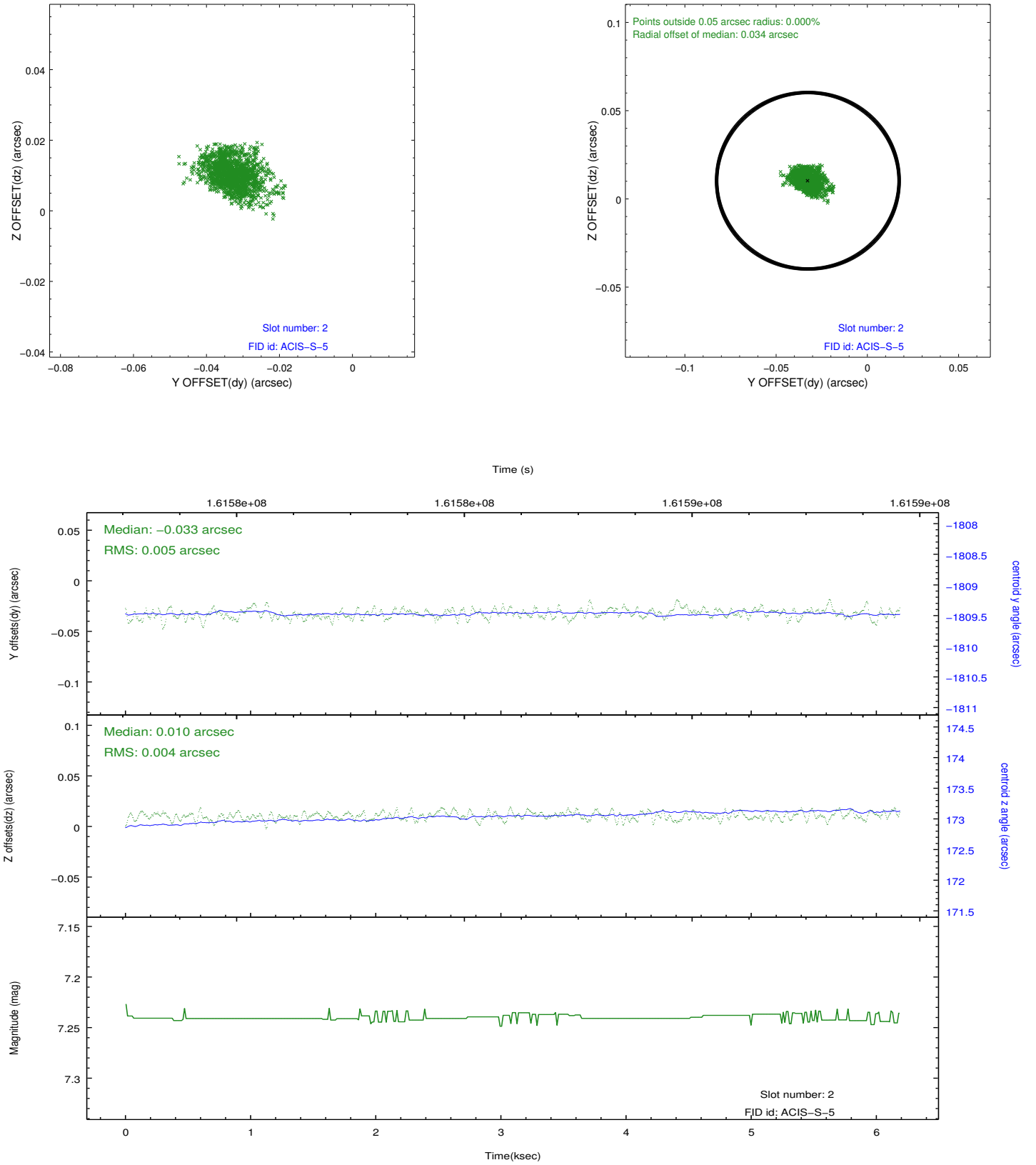
### 2.5.1 Slot 0



## 2.5.2 Slot 1



### 2.5.3 Slot 2



## A Summary

### A.1 Status

V&V Scientist	Jen Lauer
V&V Date (YYYY-MM-DD)	2012.11.05
V&V Edition	1
V&V Disposition and Status	OK
V&V Charge Time	5.001

### A.2 Comments