

V&V Reference Report

L2 ASCDS Version : 8.4.5

Observation 3998 - L2 Version 3
Chandra X-Ray Center

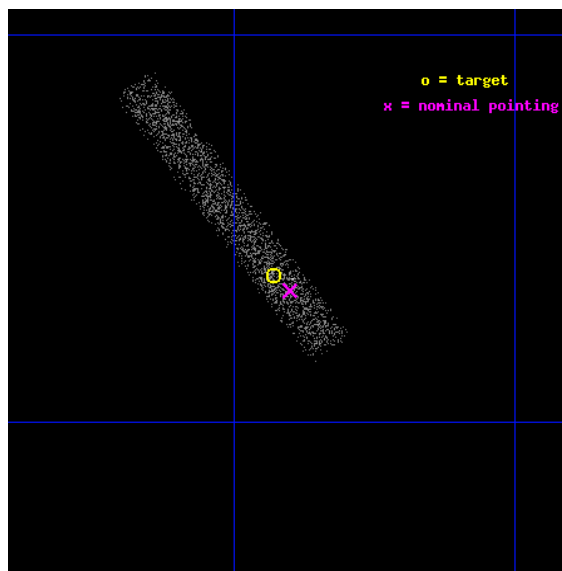
L2 Processing Date : Oct 28 2012

Contents

1	Front	2
2	OBI	3
2.1	OBI	3
2.1.1	Images	3
2.1.2	Bias	3
2.1.3	Parameters	4
2.1.4	Events	4
2.2	Compared Parameters	5
2.3	Aspect	6
2.4	Star Slots	9
2.4.1	Slot 3	9
2.4.2	Slot 4	10
2.4.3	Slot 5	11
2.4.4	Slot 6	12
2.4.5	Slot 7	13
2.5	FID Slots	14
2.5.1	Slot 0	14
2.5.2	Slot 1	15
2.5.3	Slot 2	16
A	Summary	17
A.1	Status	17
A.2	Comments	17

1 Front

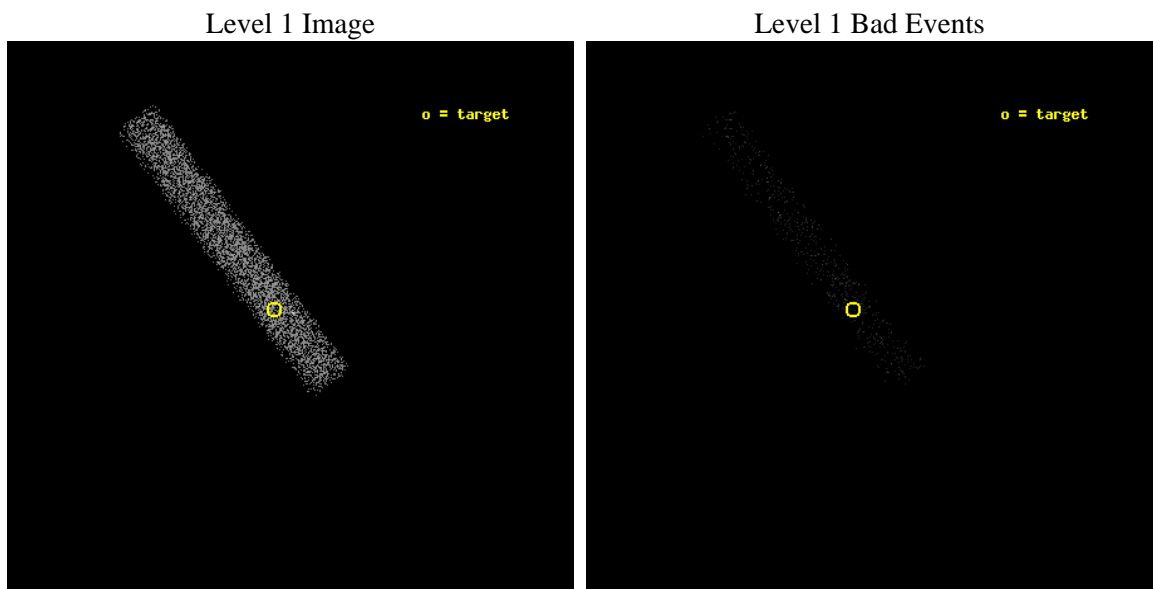
seq_num	700677	Sequence number
obs_id	3998	Observation id
title	AN X-RAY SURVEY OF RADIO-SELECTED LOW-LUMINOSITY AGNS	Proposal tit
observer	Dr. Yuichi Terashima	Principal investigator
object	NGC 4762	Source name
dtcycle	0	
cycle	P	events from which exps? Prim/Second/Both
ra_targ	193.2325	Observer's specified target RA [deg]
dec_targ	11.229611	Observer's specified target Dec [deg]
ra_nom	193.22532783933	Nominal RA [deg]
dec_nom	11.223059474082	Nominal Dec [deg]
roll_nom	233.25057782288	Nominal Roll [deg]
revision	3	Processing version of data
ontime	5858.4000872672	Sum of GTIs [s]
livetime	5313.2596474398	Livetime [s]
ontime7	5858.4000872672	Sum of GTIs [s]
l2events	3016	Number of level 2 events



2 OBI

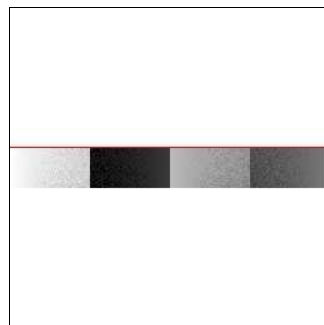
2.1 OBI

2.1.1 Images



2.1.2 Bias

Chip 7



2.1.3 Parameters

obi_num	1	Obi number	sched_exp_time	5000.000000	[s] Scheduled observation exposure time
ascdsver	8.4.5	Processing system revision	ontime	5858.4000872672	Sum of GTIs [s]
caldbver	4.5.2	 	ontime7	5858.4000872672	Sum of GTIs [s]
date	2012-10-28T13:25:56	Date and time of file creation	l1events	6682	Number of level 1 events
revision	3	Processing version of data			

2.1.4 Events

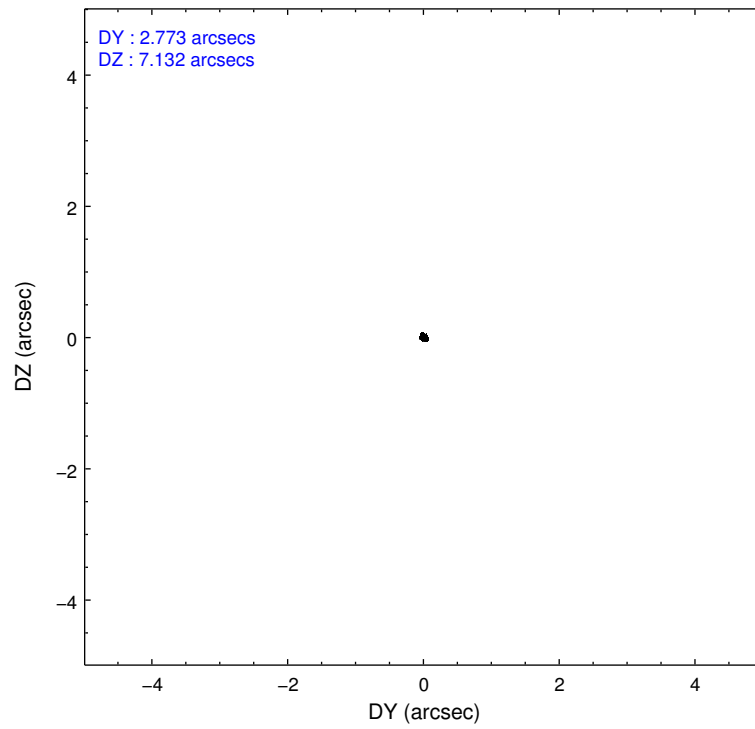
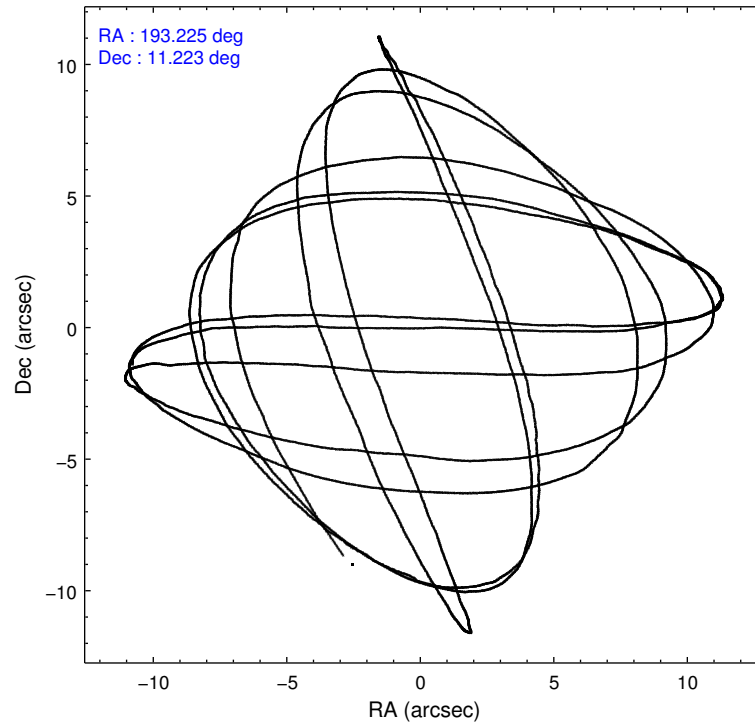
	ccd 7
level 1 events	6682
rejected events	3522
rejected %	52%

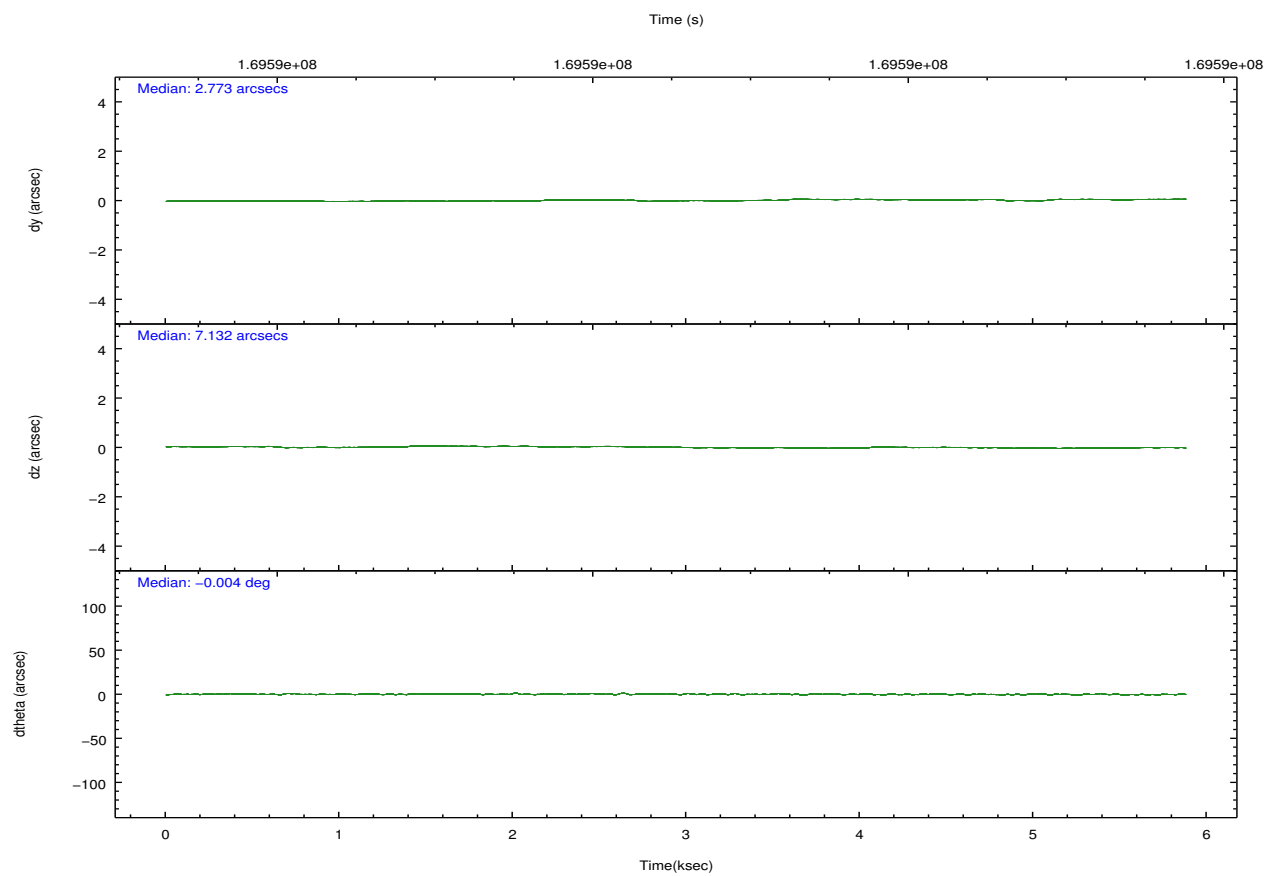
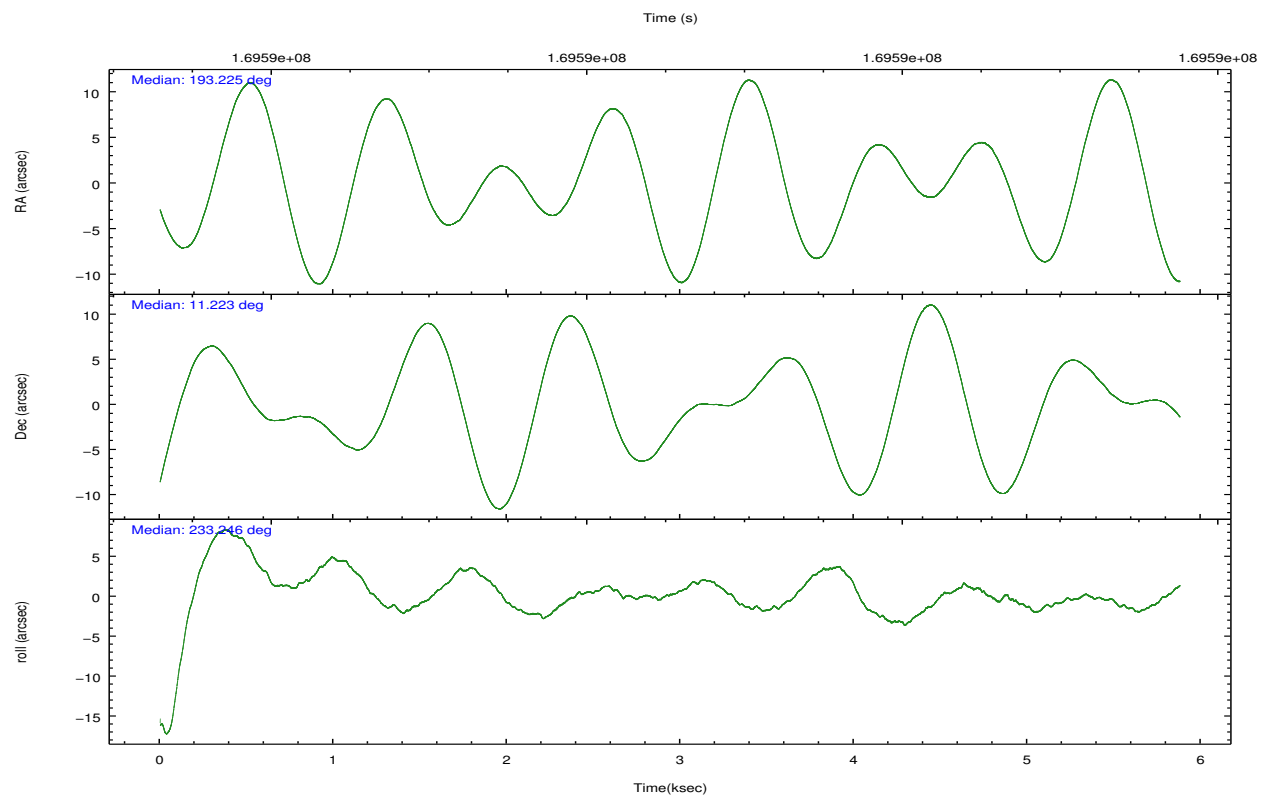
	ccd 7
grade 0 events	407
	6%
grade 1 events	11
	0%
grade 2 events	646
	9%
grade 3 events	415
	6%
grade 4 events	377
	5%
grade 5 events	655
	9%
grade 6 events	1315
	19%
grade 7 events	2856
	42%

2.2 Compared Parameters

Parameter	Planned	Actual	Parameter	Planned	Actual
Instrument	ACIS	ACIS	Obspar format version number	7	7
Detector	ACIS-7	ACIS-7	Obspar file type	PREDICTED	ACTUAL
Grating	NONE	NONE	Obspar update status	NONE	UPDATED
Data mode	VFAINT	VFAINT	Number of optional ACIS chips dropped	0	0
Observation mode	POINTING	POINTING	On-chip summing requested	N	N
[deg] Pointing RA	193.228194	193.2253278393278	Subarray requested	CUSTOM	1/8
[deg] Pointing Dec	11.250078	11.22305947408185	Subarray start row	449	449
[deg] Pointing Roll	233.093386	233.2505778228846	Subarray row count	128	128
[mm] SIM focus pos	-0.684267	-0.6828225247311905	Alternating exposures requested	N	N
[mm] SIM defocus	0	0.001444936568705701	[s] Primary exposure time	0.000000	0.4
[mm] SIM translation stage pos	-190.132523	-190.1400660498719			
[mm] SIM translation stage offset	0	0.00754346686406393			
[s] Observation start time (MET)	169586468.184000	169585157.50222			
Observation start date	2003-05-17T19:20:04	2003-05-17T18:59:17			
[s] Observation end time (MET)	169591468.184000	169592229.49001			
Observation end date	2003-05-17T20:43:24	2003-05-17T20:57:09			
Read mode	TIMED	TIMED			

2.3 Aspect



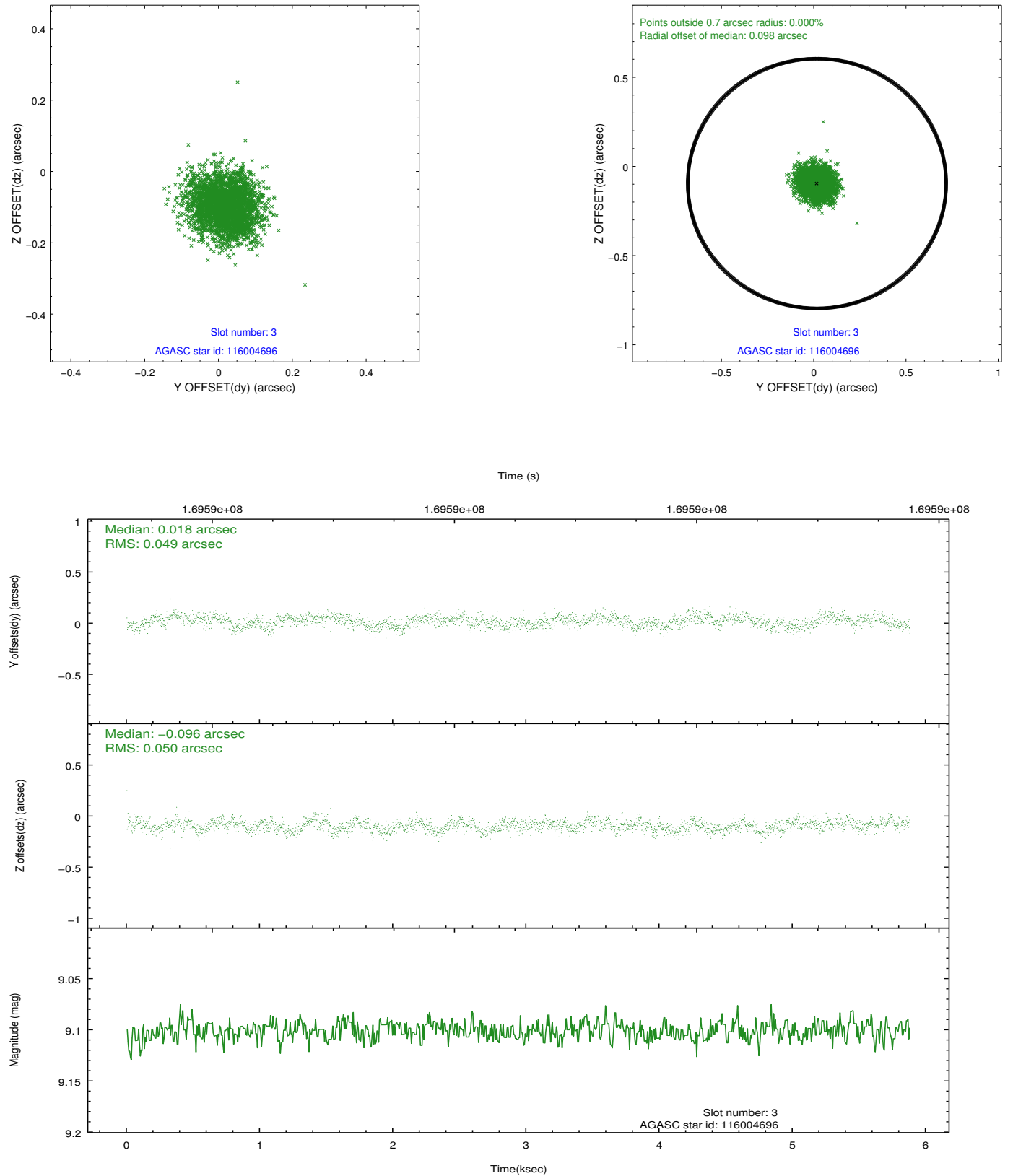


Slot Statistics

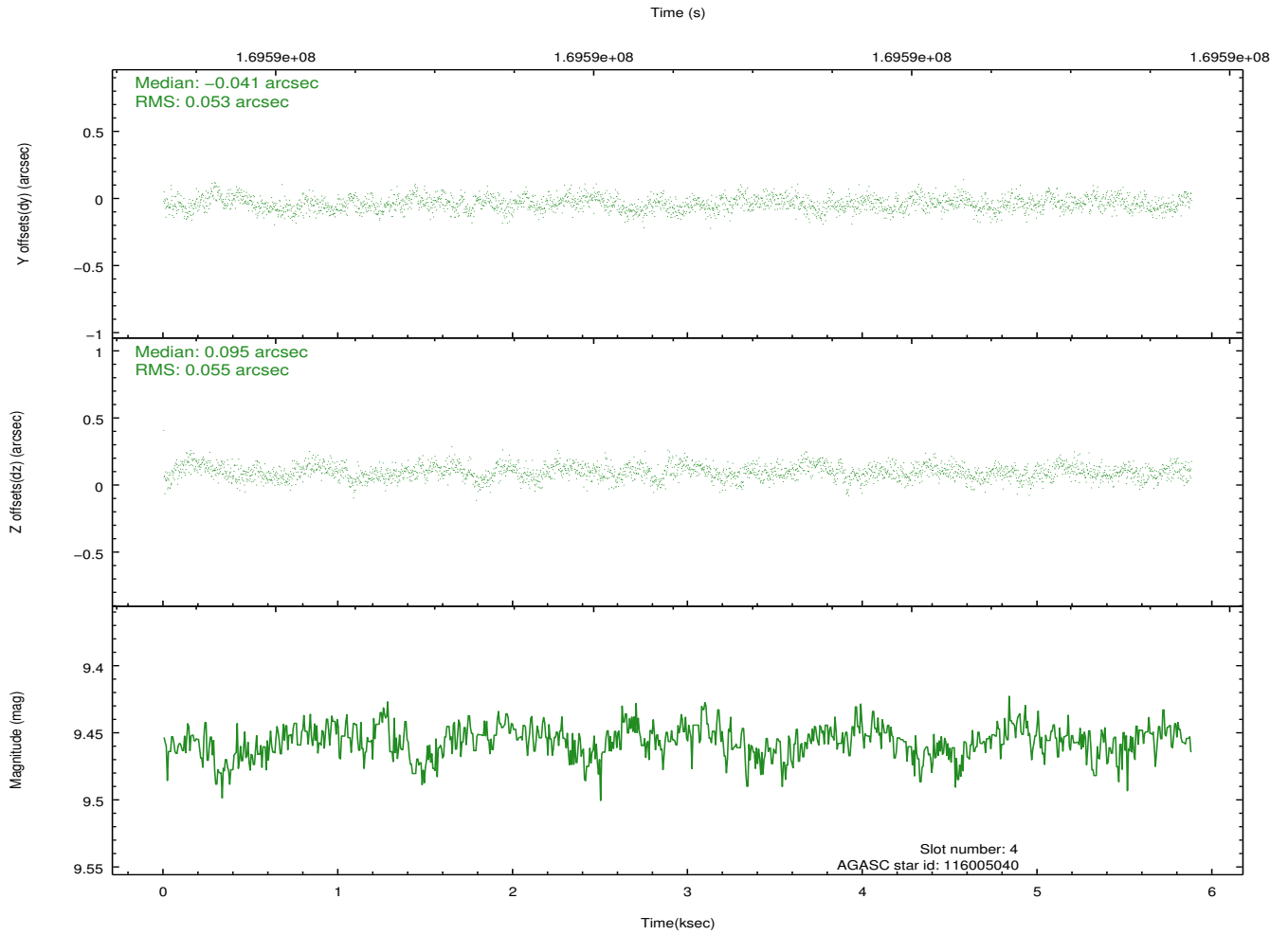
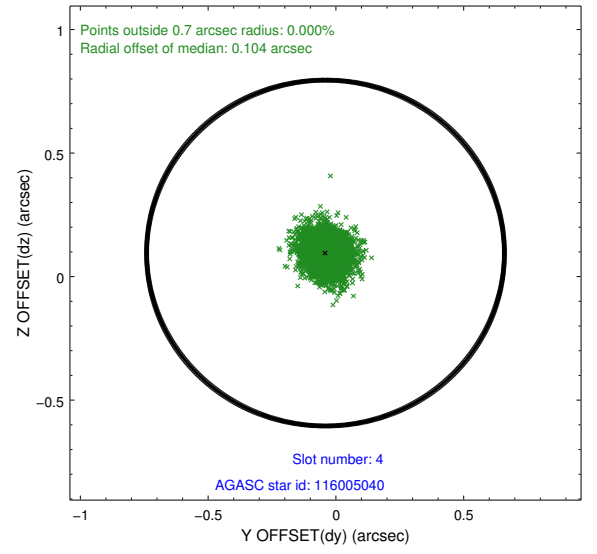
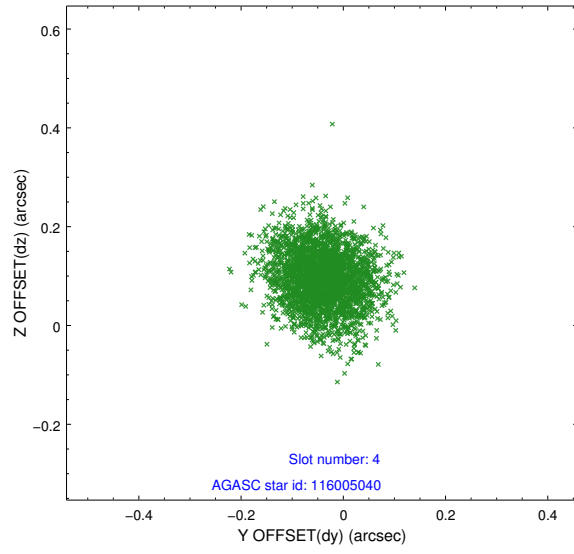
slot	status	id	mag	n_pts	med_dy	med_dz	dr1	dr2	ra	dec	mean_y	mean_z
0	FID	ACIS-S-2	7.12	1434	-0.031	-0.016	0.007	0.011	0.000000	0.000000	-755.44	-1728.32
1	FID	ACIS-S-4	7.20	1434	0.021	0.019	0.005	0.010	0.000000	0.000000	2157.42	179.16
2	FID	ACIS-S-5	7.24	1434	-0.021	0.005	0.006	0.010	0.000000	0.000000	-1806.98	173.95
3	GUIDE	116004696	9.10	2856	0.018	-0.096	0.075	0.118	193.280153	11.219447	-21.46	213.08
4	GUIDE	116005040	9.46	2869	-0.041	0.095	0.082	0.131	193.170570	11.209691	238.87	-74.99
5	GUIDE	116006760	9.33	2867	0.182	-0.114	0.106	0.162	192.469200	10.995733	2341.06	-1596.63
6	GUIDE	116007520	9.64	2865	-0.022	0.042	0.088	0.143	193.127125	11.446262	-349.29	-709.51
7	GUIDE	116007840	9.19	2868	-0.136	0.073	0.090	0.146	193.722048	11.481140	-1712.39	892.67

2.4 Star Slots

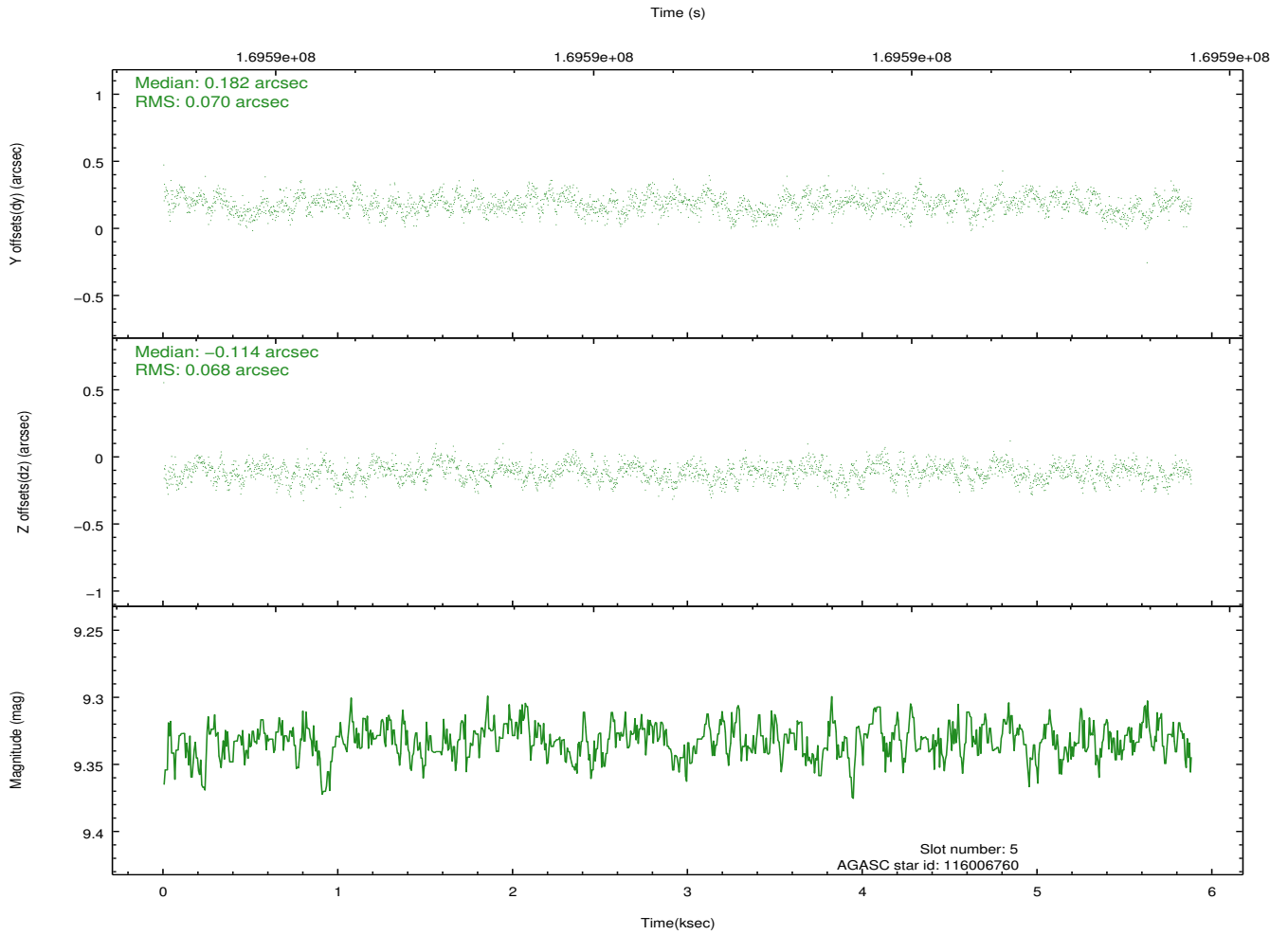
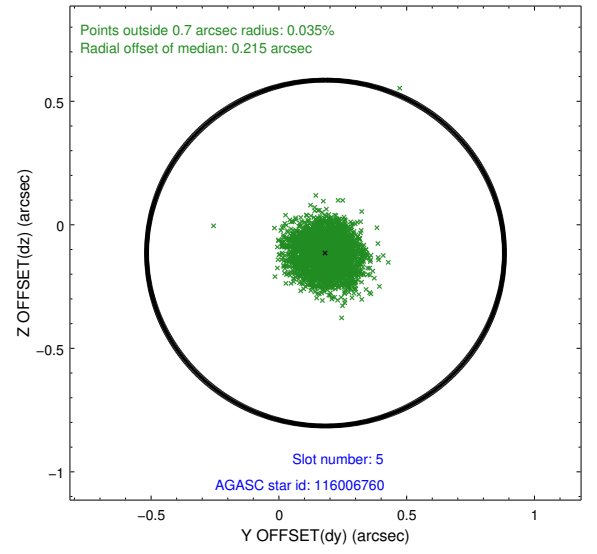
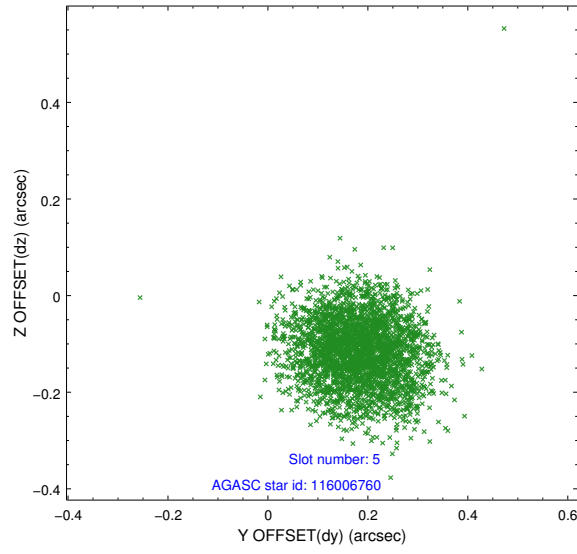
2.4.1 Slot 3



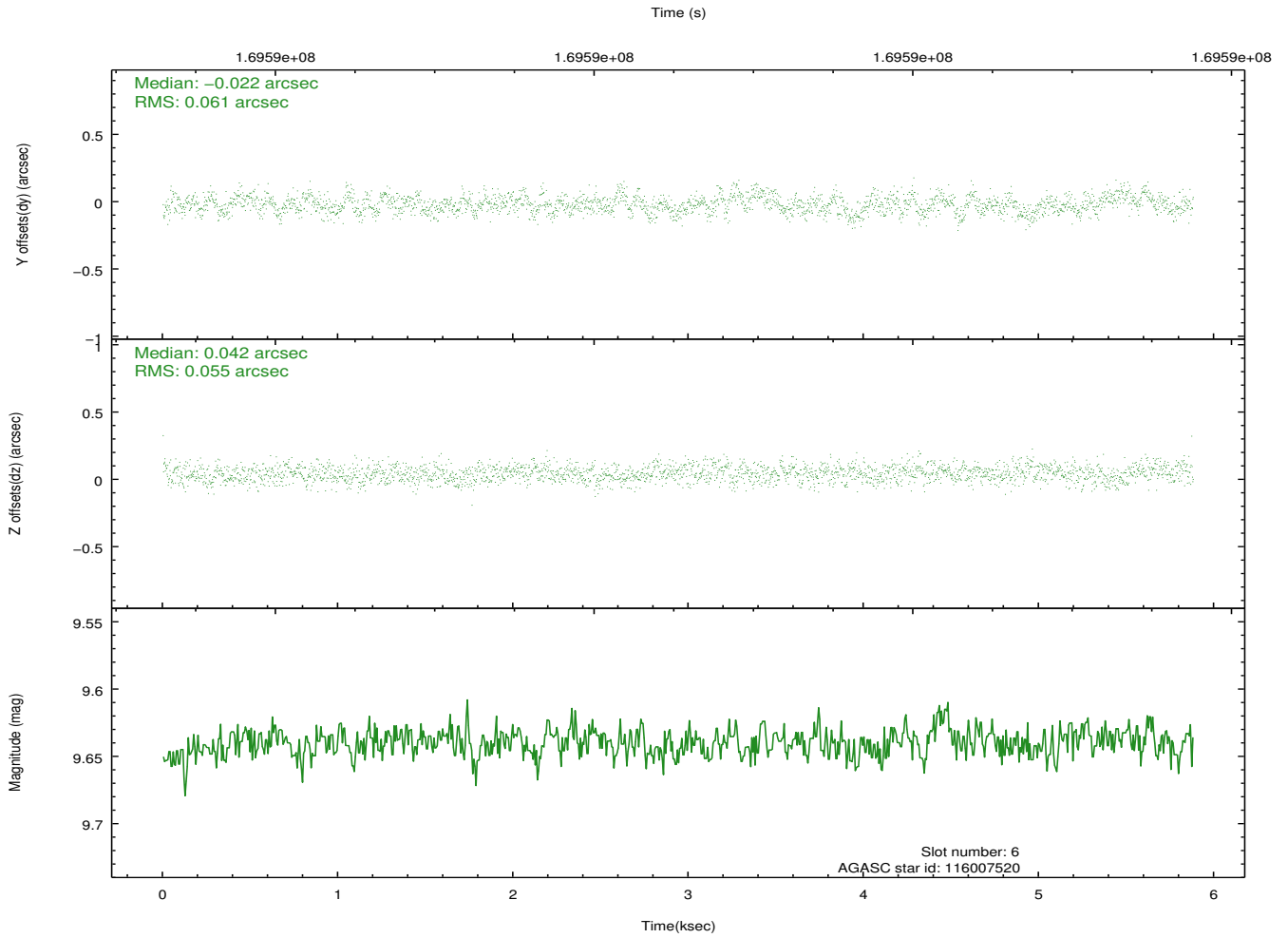
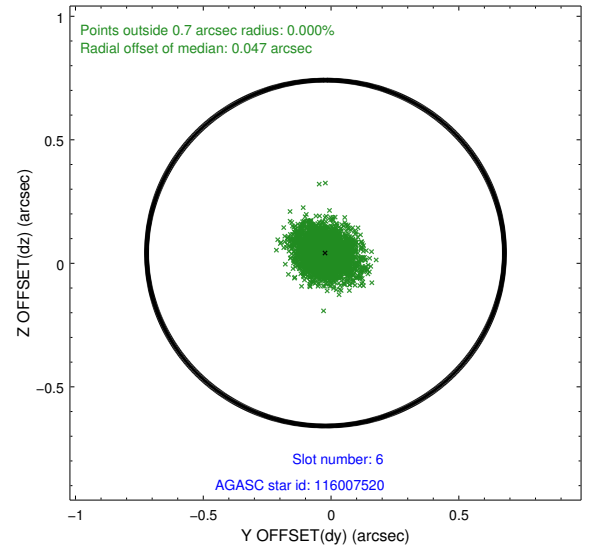
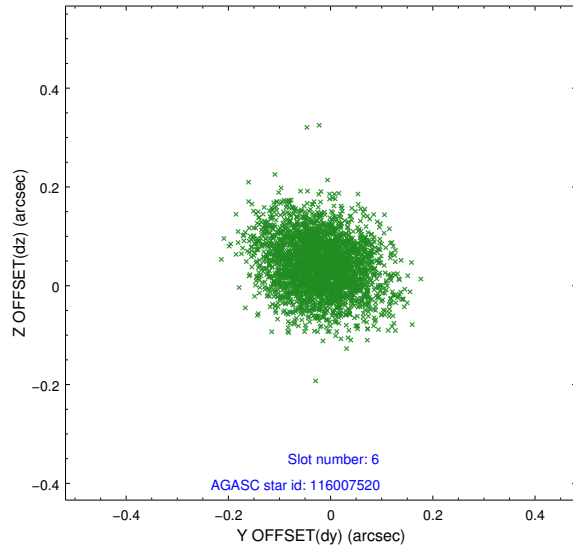
2.4.2 Slot 4



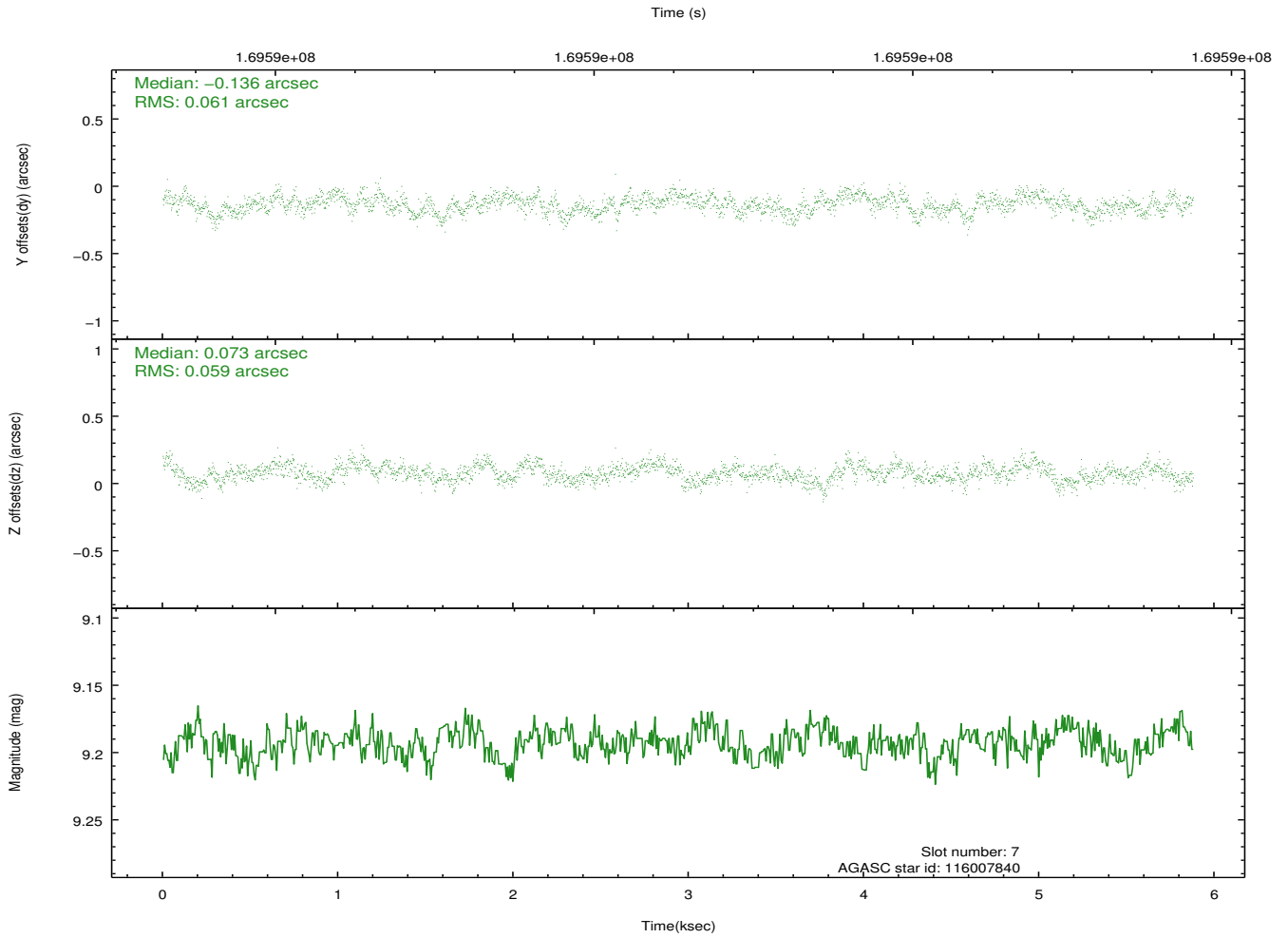
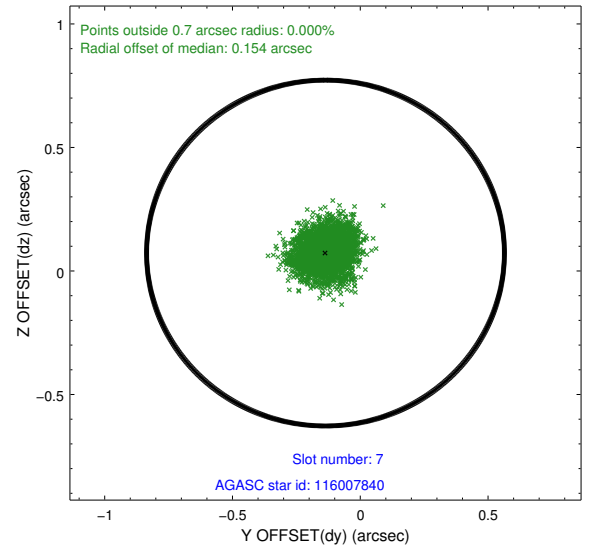
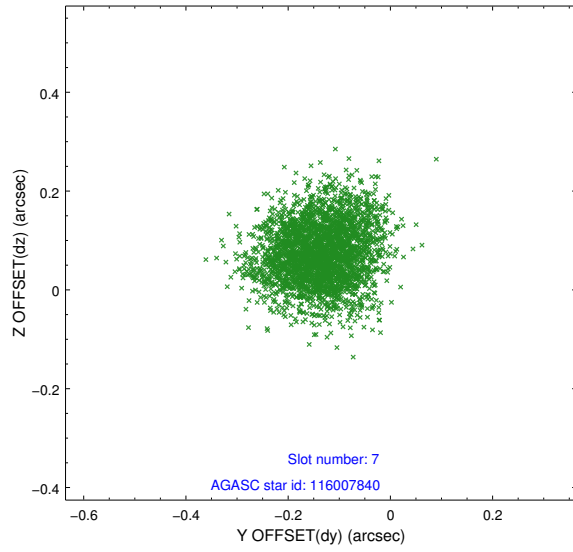
2.4.3 Slot 5



2.4.4 Slot 6

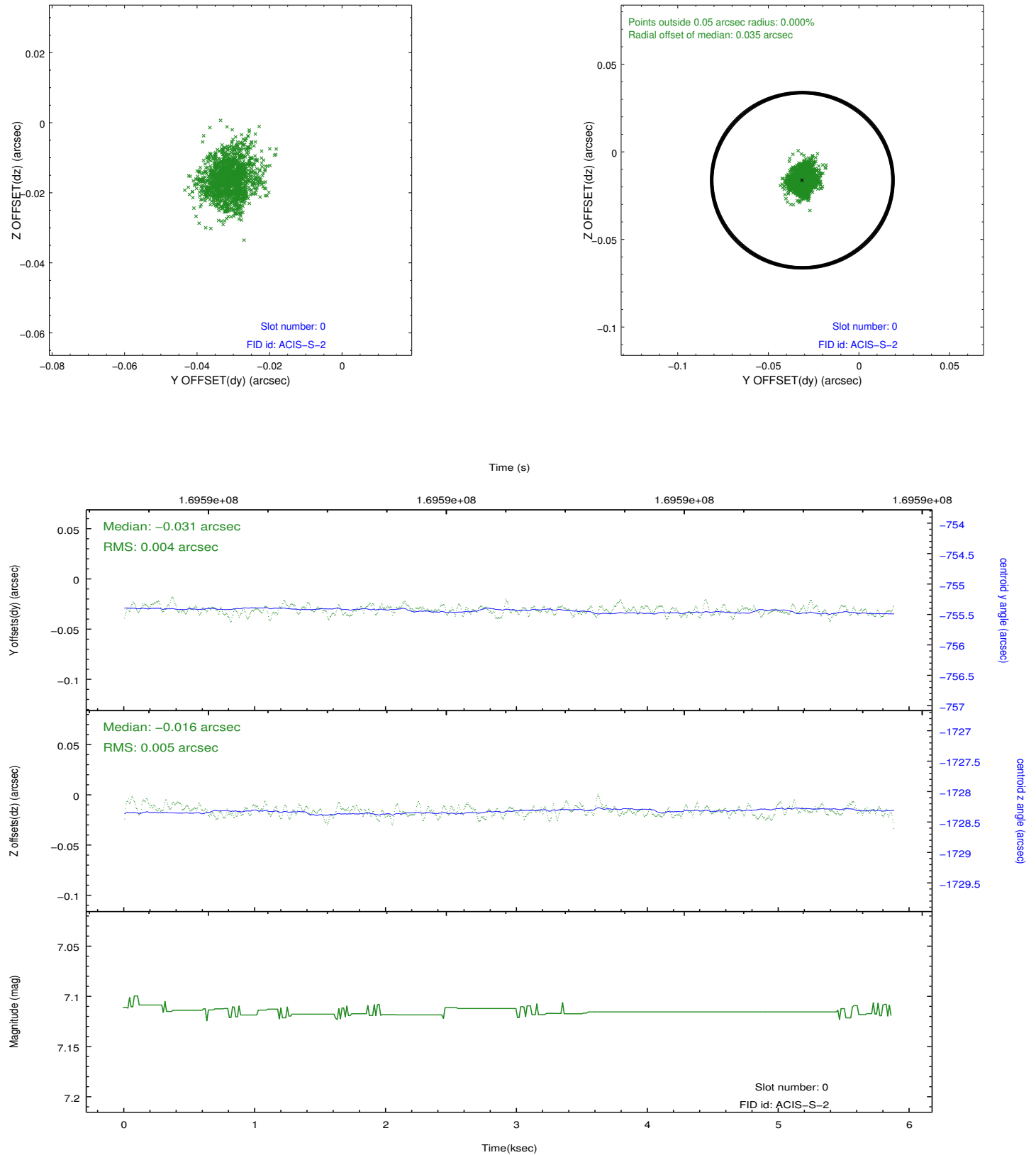


2.4.5 Slot 7

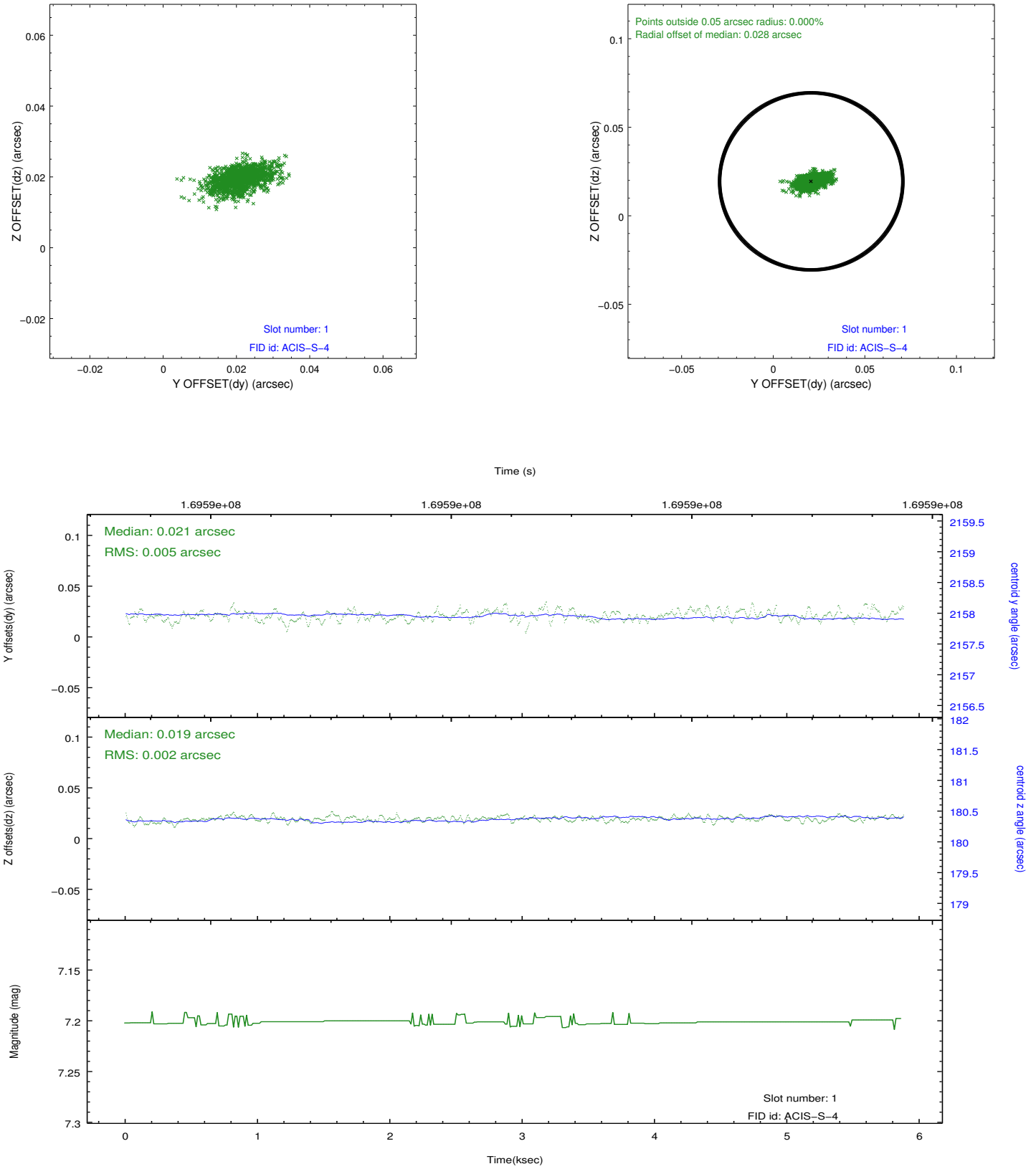


2.5 FID Slots

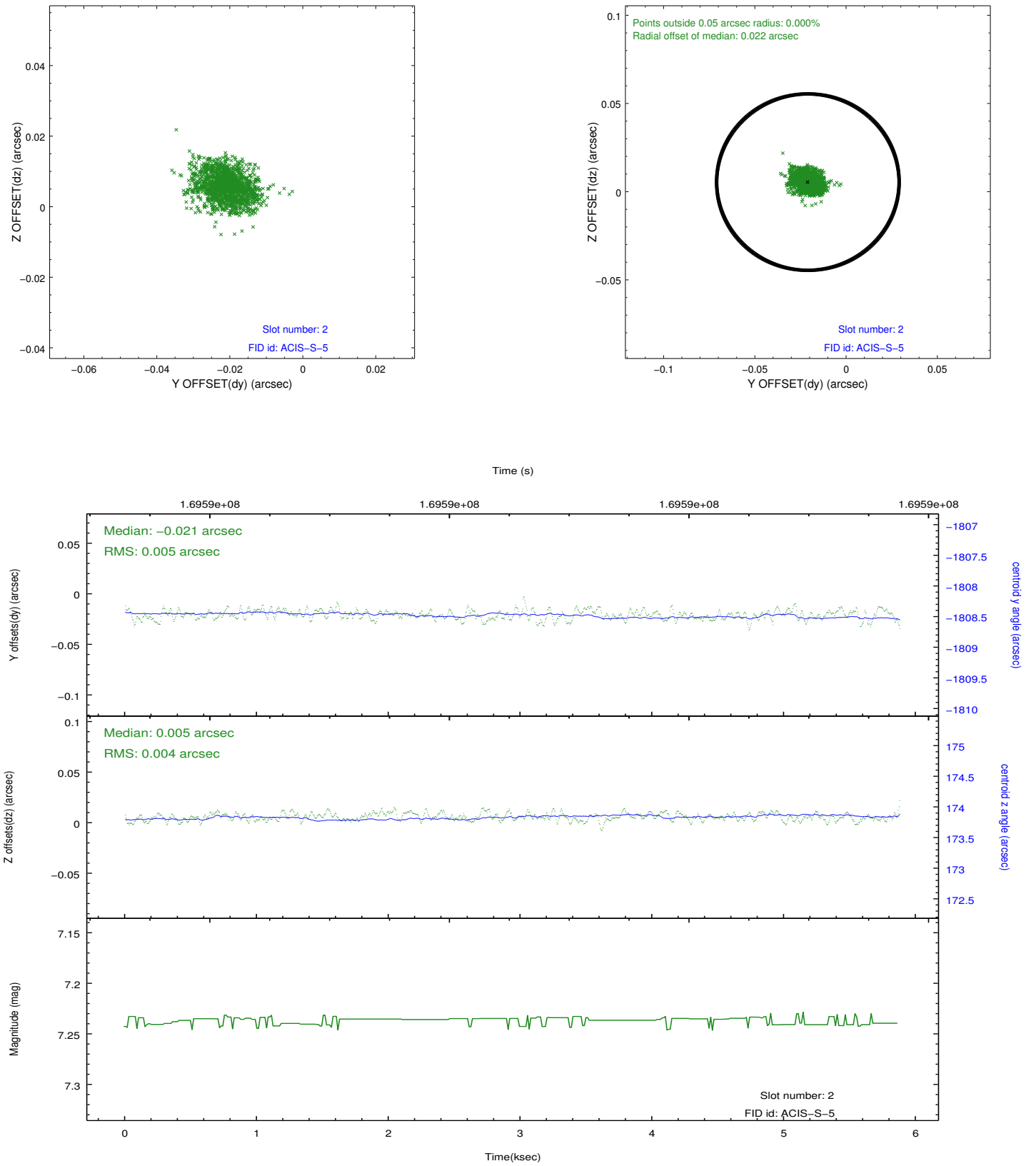
2.5.1 Slot 0



2.5.2 Slot 1



2.5.3 Slot 2



A Summary

A.1 Status

V&V Scientist	Jen Lauer
V&V Date (YYYY-MM-DD)	2012.11.15
V&V Edition	1
V&V Disposition and Status	OK
V&V Charge Time	5.858

A.2 Comments