

# V&V Reference Report

## L2 ASCDS Version : 7.6.8

Observation 3564 - L2 Version 001  
Chandra X-Ray Center

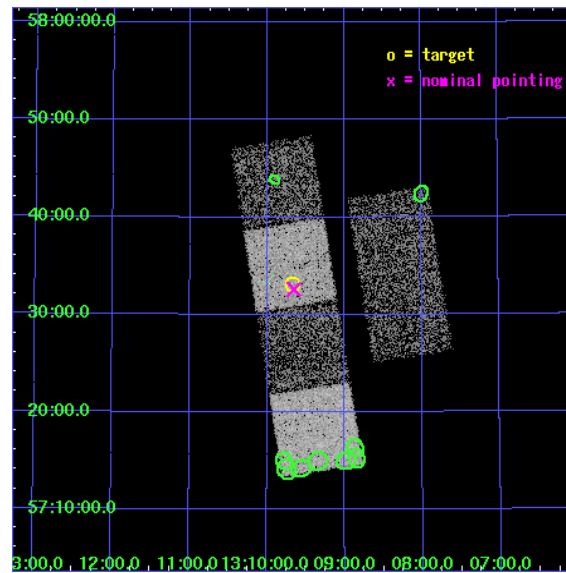
L2 Processing Date : Jul 14 2006

## Contents

<b>1</b>	<b>Front</b>	<b>2</b>
<b>2</b>	<b>OBI</b>	<b>3</b>
2.1	OBI . . . . .	3
2.1.1	Images . . . . .	3
2.1.2	Bias . . . . .	3
2.1.3	Parameters . . . . .	4
2.1.4	Events . . . . .	4
2.2	Compared Parameters . . . . .	5
2.3	Aspect . . . . .	6
2.4	Star Slots . . . . .	9
2.4.1	Slot 3 . . . . .	9
2.4.2	Slot 4 . . . . .	10
2.4.3	Slot 5 . . . . .	11
2.4.4	Slot 6 . . . . .	12
2.4.5	Slot 7 . . . . .	13
2.5	FID Slots . . . . .	14
2.5.1	Slot 0 . . . . .	14
2.5.2	Slot 1 . . . . .	15
2.5.3	Slot 2 . . . . .	16
<b>3</b>	<b>Point Sources</b>	<b>17</b>
<b>A</b>	<b>Summary</b>	<b>18</b>
A.1	Status . . . . .	18
A.2	Comments . . . . .	18

# 1 Front

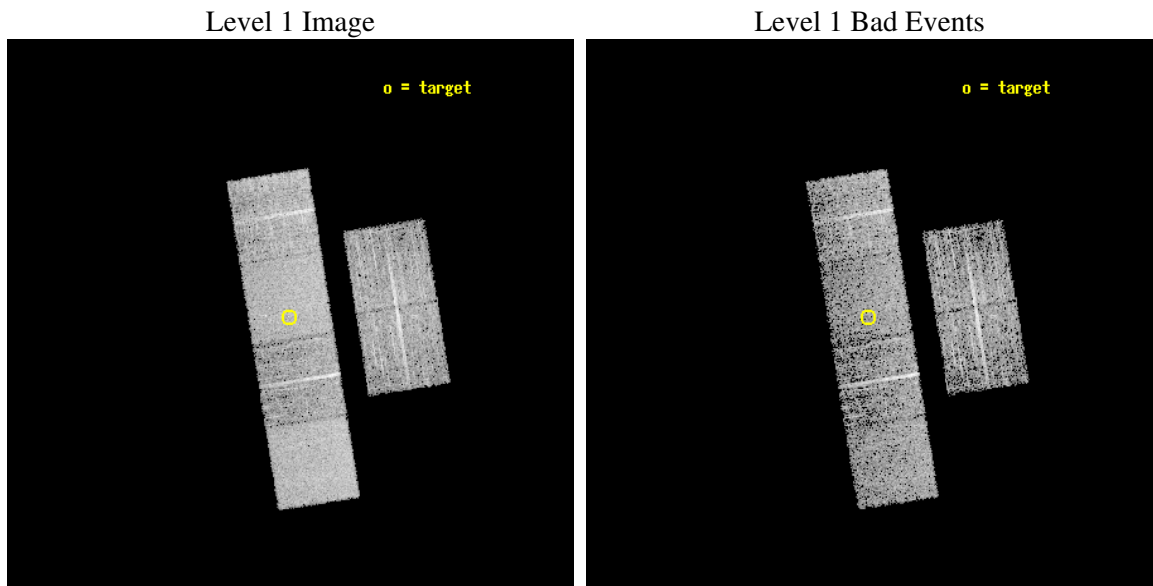
seq_num	700626
obs_id	3564
title	A CHANDRA SURVEY OF LUMINOUS, RADIO-DETECTED QUASARS AT $Z > 4$
observer	Professor Gordon Garmire
object	FIRST 1309+5733
dtcycle	0
cycle	P
ra_targ	197.419167
dec_targ	57.552528
ra_nom	197.41329830789
dec_nom	57.543397929899
roll_nom	260.88676540112
revision	2
ontime	4700.7999824882
livetime	4641.275622628
ontime2	4700.7999824882
ontime3	4700.7999824882
ontime5	4700.7999824882
ontime6	4700.7999824882
ontime7	4700.7999824882
ontime8	4697.559022218
l2events	43306



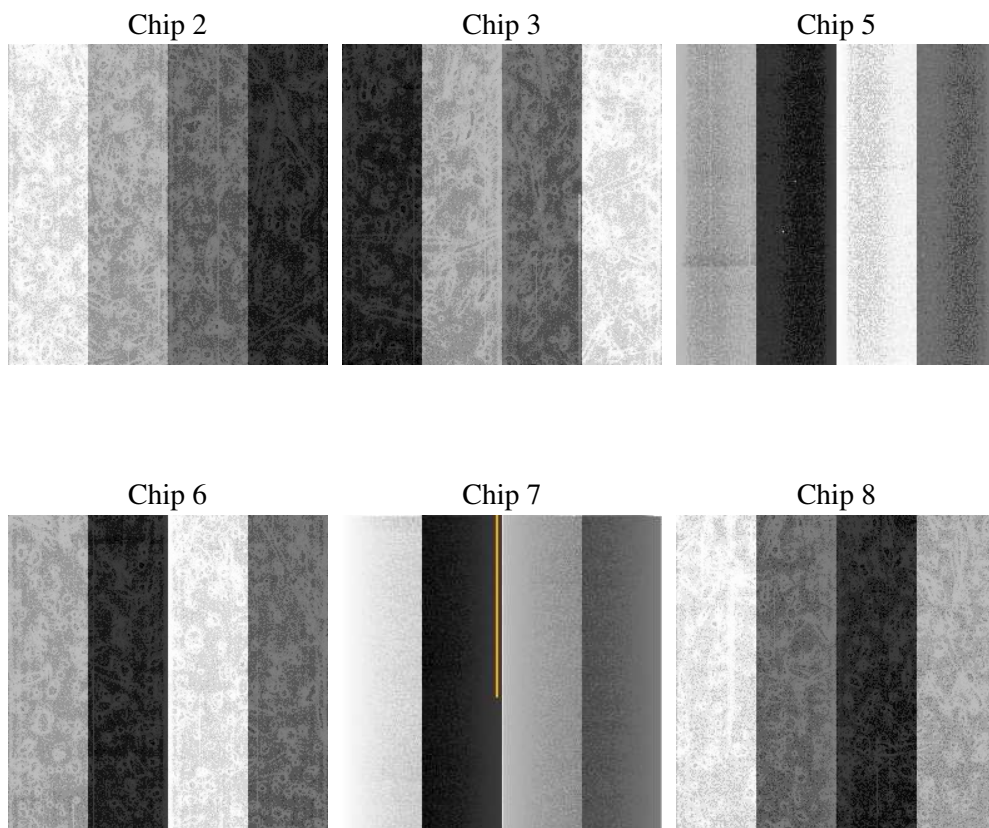
## 2 OBI

### 2.1 OBI

#### 2.1.1 Images



#### 2.1.2 Bias



### 2.1.3 Parameters

obi_num	0
ascdsver	7.6.8
caldsver	3.2.2
date	2006-07-14T06:08:50
revision	2

sched_exp_time	4944.000000
ontime	4705.9330400527
ontime2	4705.9330400527
ontime3	4709.1740601361
ontime5	4709.1740601361
ontime6	4709.1740601361
ontime7	4705.9330400527
ontime8	4705.9329703152
l1events	200433

### 2.1.4 Events

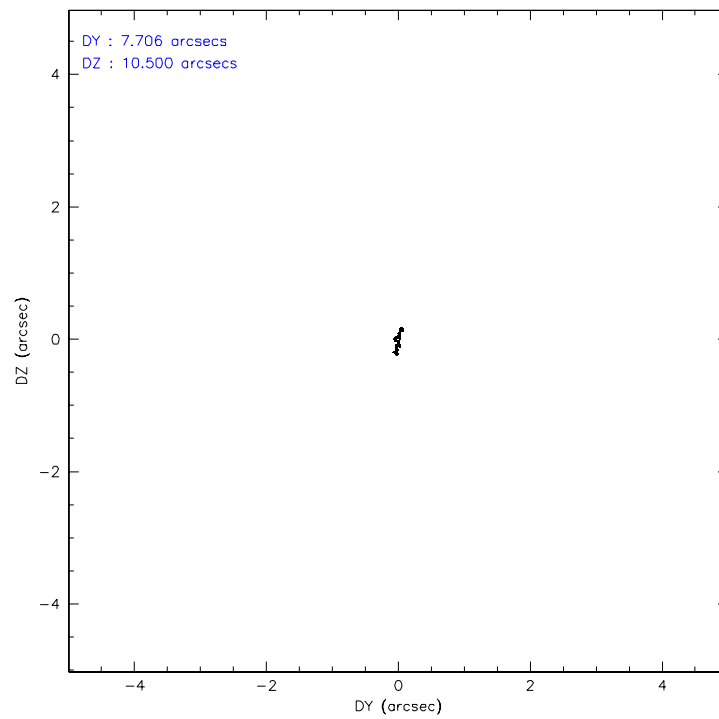
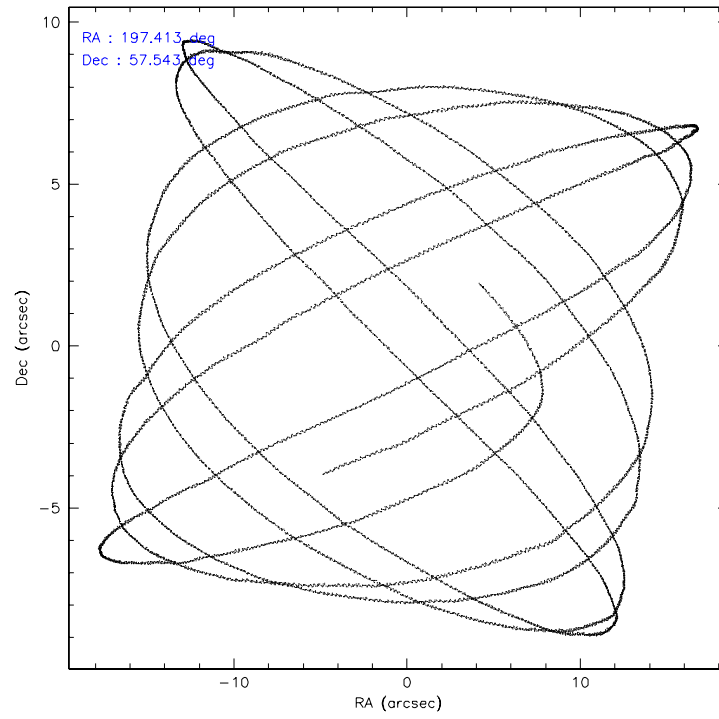
	ccd 2	ccd 3	ccd 5	ccd 6	ccd 7	ccd 8
level 1 events	28612	28741	40801	27879	37683	36717
rejected events	25318	25548	23240	24434	23211	29708
rejected %	88%	88%	56%	87%	61%	80%

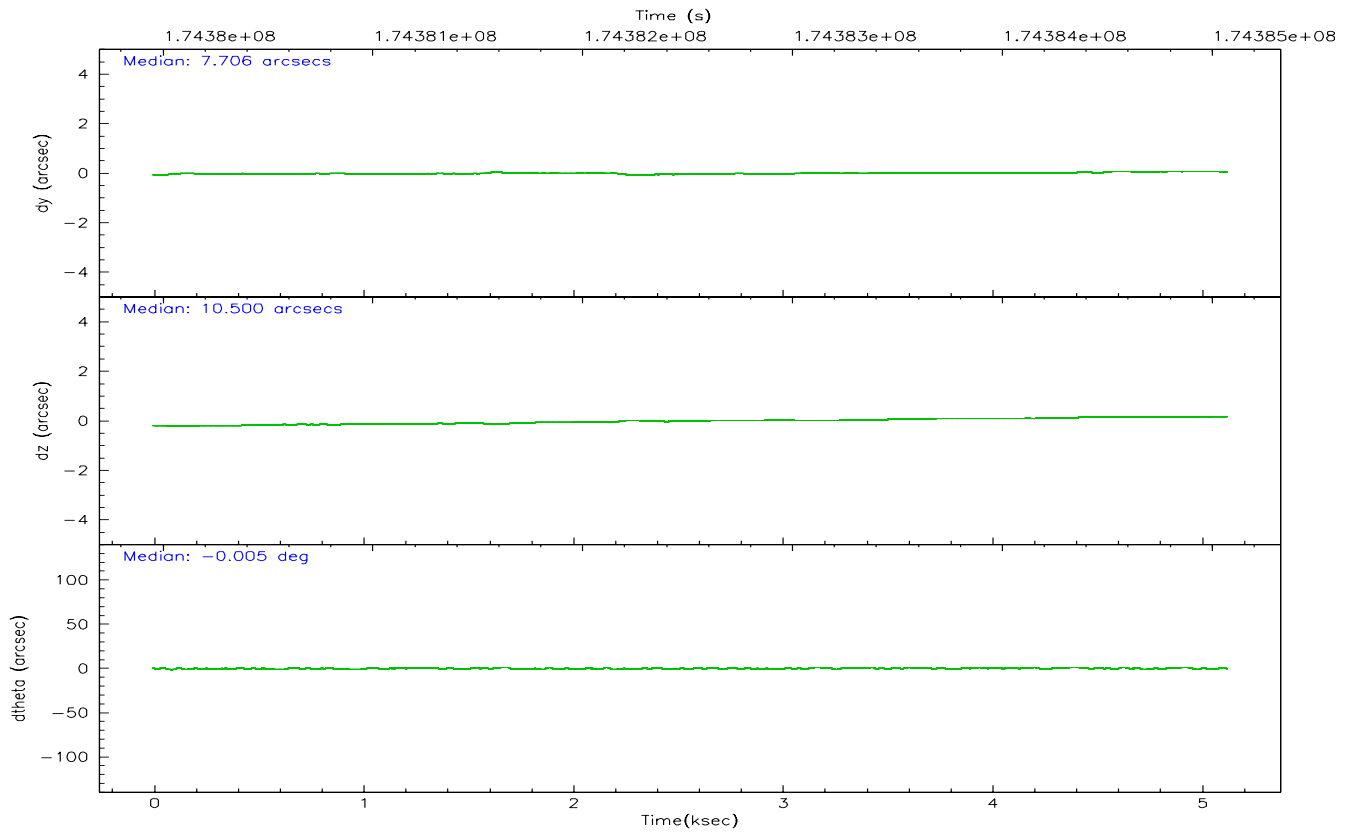
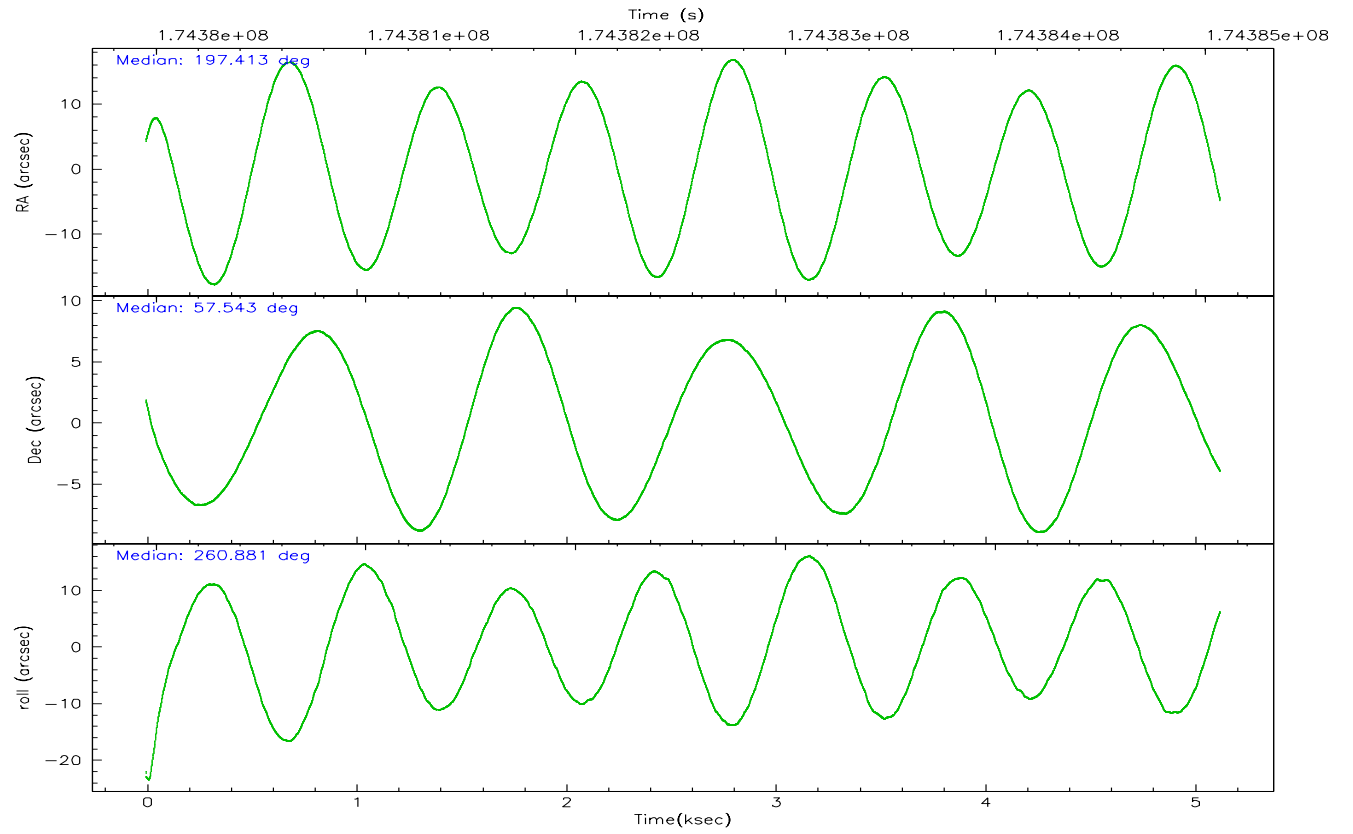
	ccd 2	ccd 3	ccd 5	ccd 6	ccd 7	ccd 8
grade 0 events	1417	1402	771	1346	953	2173
	4%	4%	1%	4%	2%	5%
grade 1 events	17	12	31	14	24	23
	0%	0%	0%	0%	0%	0%
grade 2 events	700	620	5520	725	3593	1503
	2%	2%	13%	2%	9%	4%
grade 3 events	330	319	413	354	773	786
	1%	1%	1%	1%	2%	2%
grade 4 events	307	314	415	357	692	712
	1%	1%	1%	1%	1%	1%
grade 5 events	1093	1253	1991	1293	2526	1603
	3%	4%	4%	4%	6%	4%
grade 6 events	541	546	10480	668	8470	1867
	1%	1%	25%	2%	22%	5%
grade 7 events	24207	24275	21180	23122	20652	28050
	84%	84%	51%	82%	54%	76%

## 2.2 Compared Parameters

Parameter	Planned	Actual	Parameter	Planned	Actual
Instrument	ACIS	ACIS	Obspar format version number	6	6
Detector	ACIS-235678	ACIS-235678	Obspar file type	PREDICTED	ACTUAL
Grating	NONE	NONE	Obspar update status	NONE	UPDATED
Data mode	FAINT	FAINT	On-chip summing requested	N	N
Observation mode	POINTING	POINTING	Subarray requested	NONE	NONE
Pointing RA	197.394488	197.4132983078922	Alternating exposures requested	N	N
Pointing Dec	57.568696	57.54339792989862	Primary exposure time	0.000000	3.2
Pointing Roll	260.746063	260.8867654011187			
SIM focus pos (mm)	-0.684267	-0.6828225247311905			
SIM defocus (mm)	0	0.001444936568705701			
SIM translation stage pos (mm)	-190.132523	-190.1400660498719			
SIM translation stage offset (mm)	0	0.00754346686406393			
Observation start time	174380126.184000	174379405.58087			
Observation start date	2003-07-12T06:54:22	2003-07-12T06:43:25			
Observation end time	174385070.184000	174385651.93113			
Observation end date	2003-07-12T08:16:46	2003-07-12T08:27:31			
Read mode	TIMED	TIMED			

## 2.3 Aspect





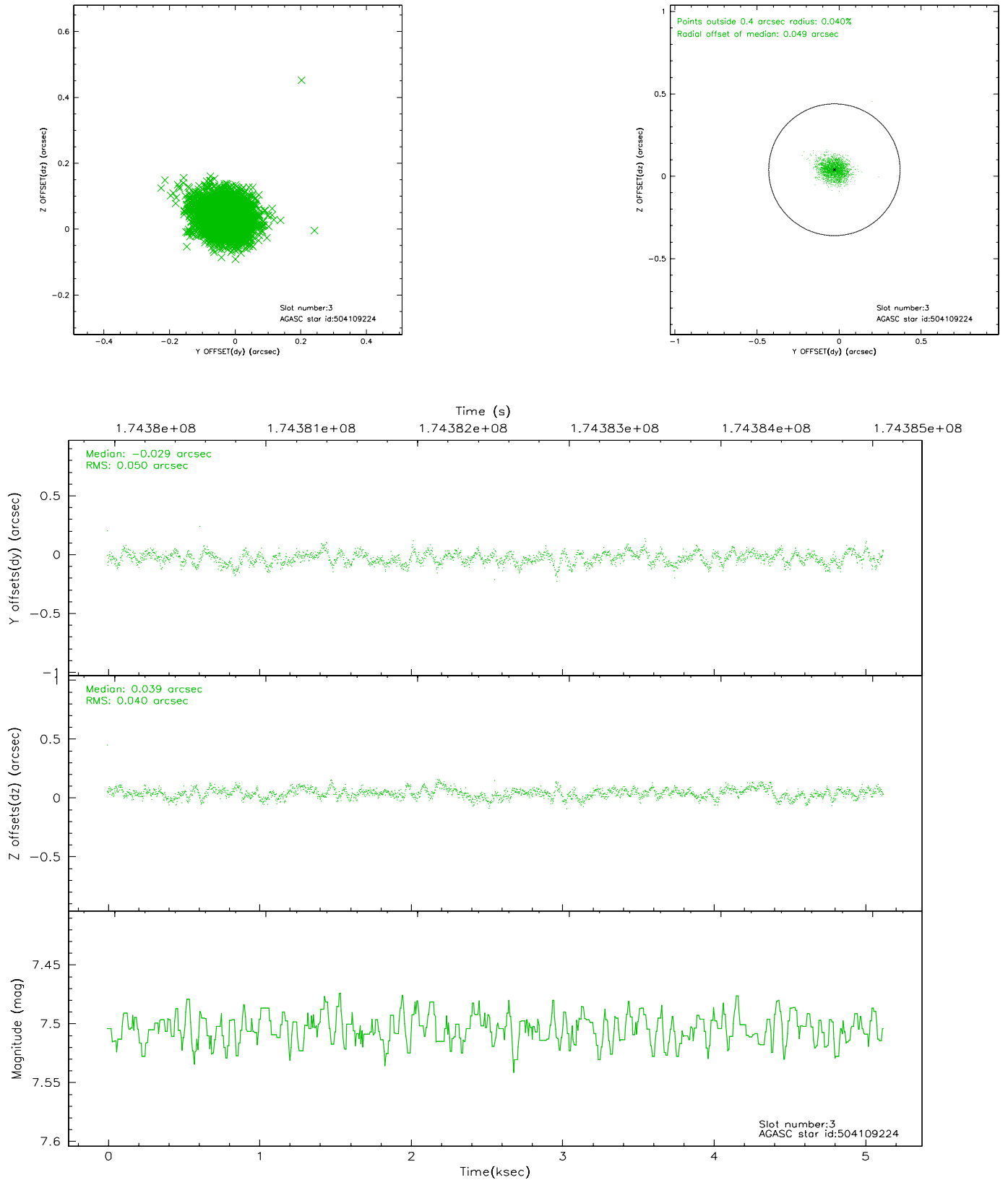
### Slot Statistics

slot	status	id	mag	n_pts	med_dy	med_dz	dr1	dr2	ra	dec	mean_y	mean_z
0	FID	ACIS-S-2	7.10	1250	-0.027	-0.009	0.006	0.011	0.000000	0.000000	-760.47	-1731.76
1	FID	ACIS-S-4	7.20	1250	0.042	0.007	0.006	0.010	0.000000	0.000000	2152.31	175.56
2	FID	ACIS-S-6	7.34	1250	-0.042	0.008	0.007	0.013	0.000000	0.000000	402.98	814.27
3	GUIDE	504109224	7.50	2501	-0.029	0.039	0.068	0.107	196.603803	57.025262	2171.64	-1215.61
4	GUIDE	504111928	8.98	2501	-0.009	-0.031	0.071	0.114	197.590525	57.425998	446.57	457.10
5	GUIDE	504500240	8.02	2501	-0.020	0.036	0.056	0.087	197.715643	57.560445	-71.49	616.80
6	GUIDE	504502992	9.25	2495	0.099	-0.079	0.090	0.146	197.480652	57.567776	-23.01	164.81
7	GUIDE	504503552	8.61	2500	-0.041	0.036	0.055	0.088	197.056514	57.632643	-123.68	-680.03

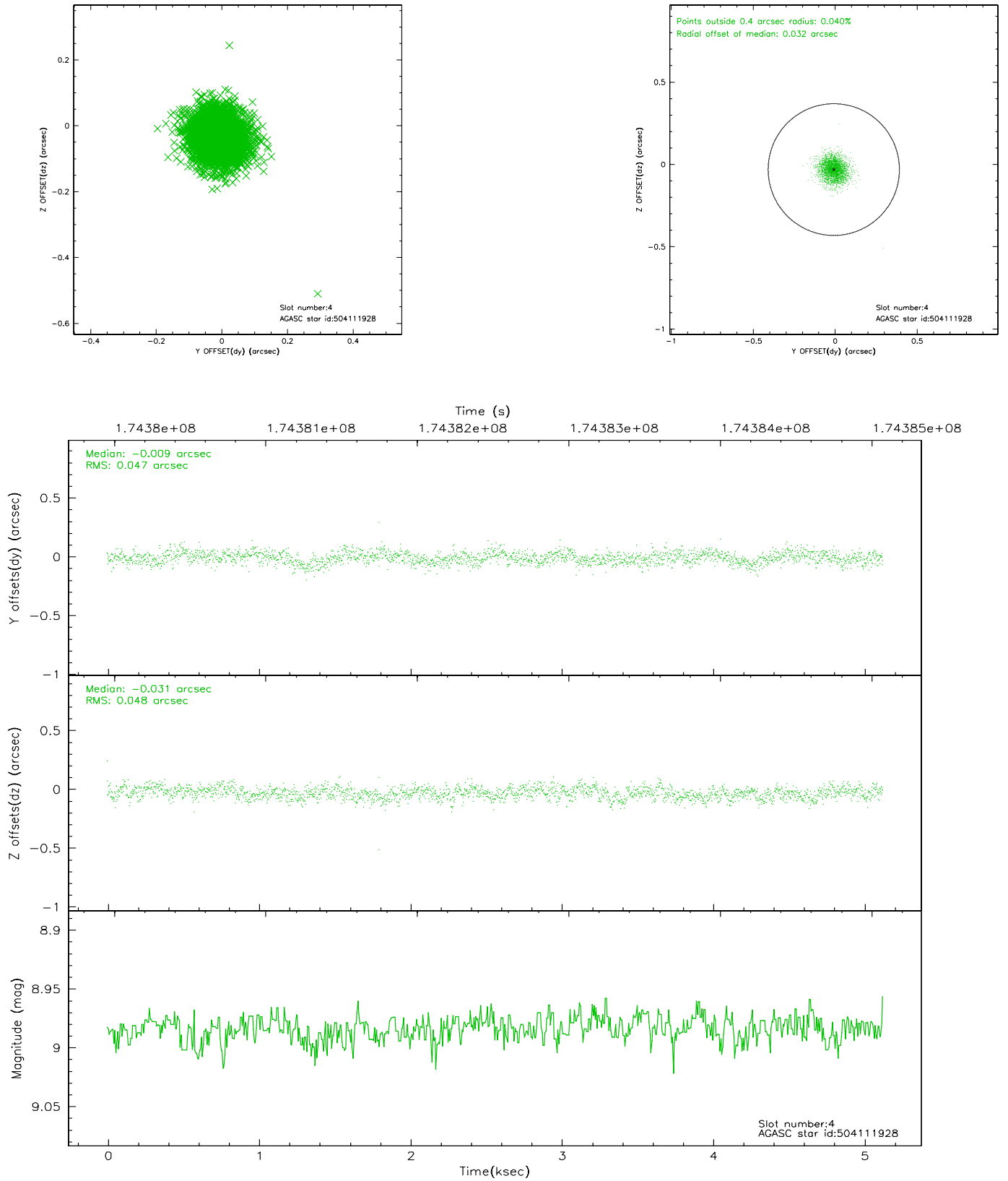


## 2.4 Star Slots

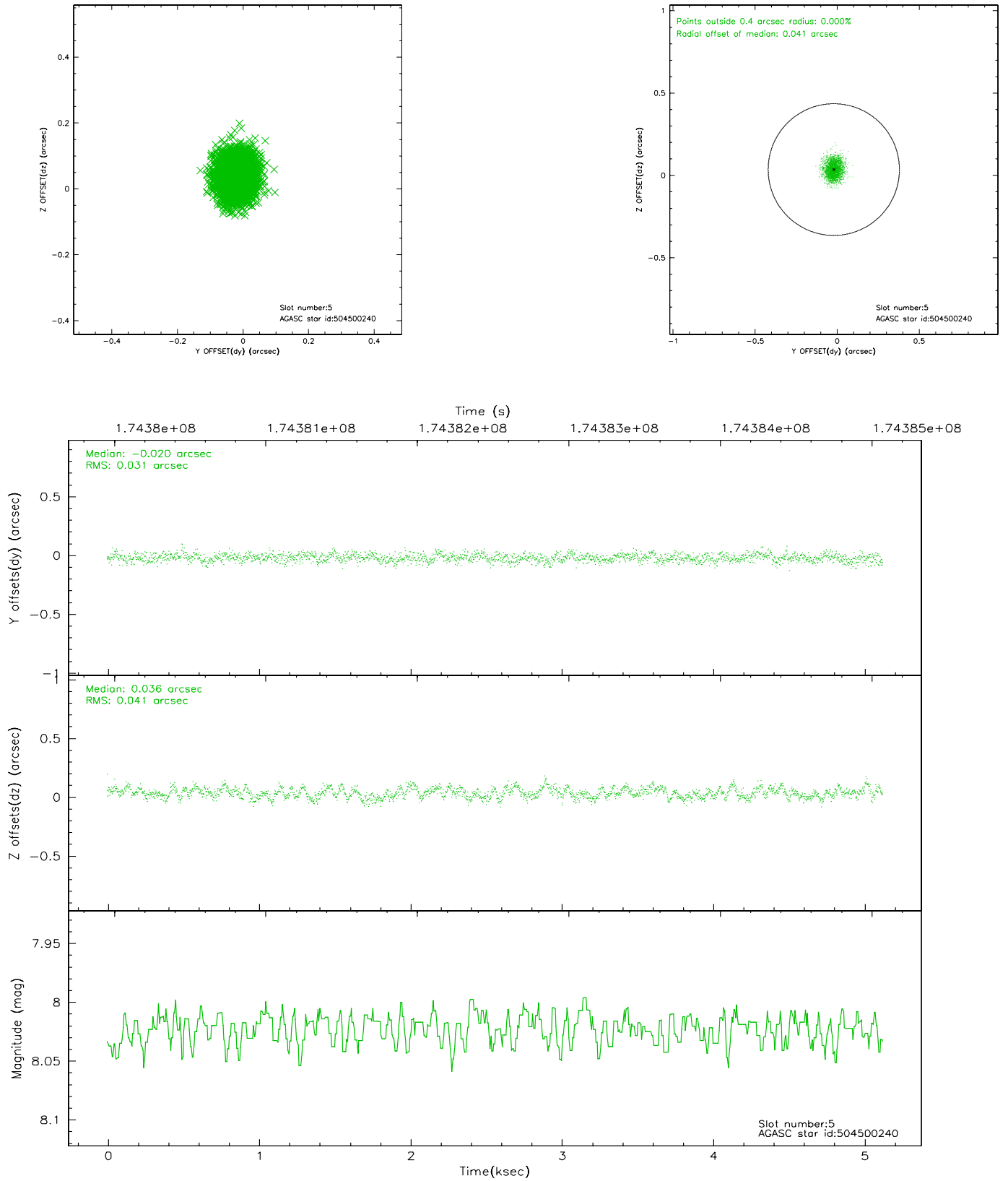
### 2.4.1 Slot 3



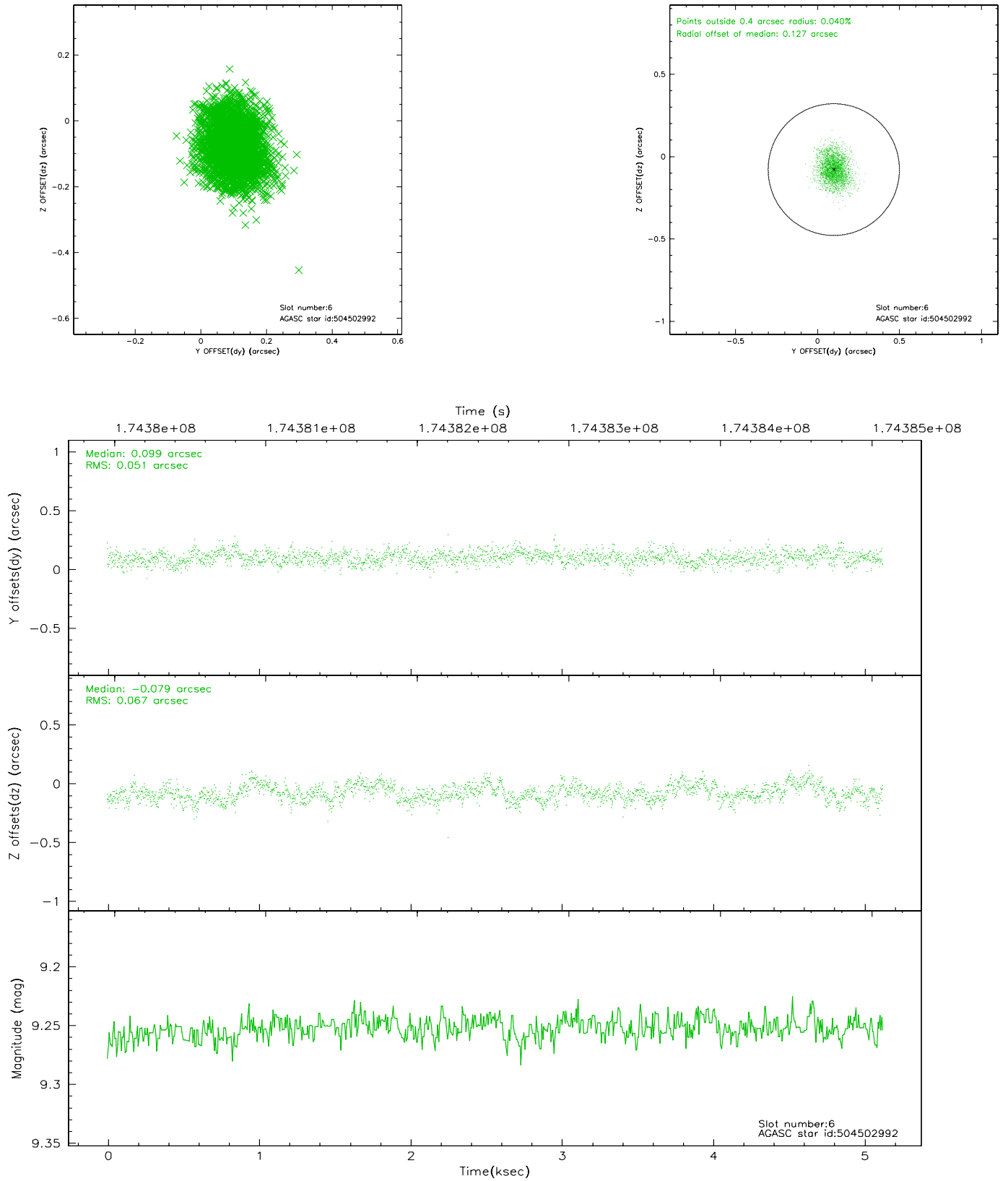
## 2.4.2 Slot 4



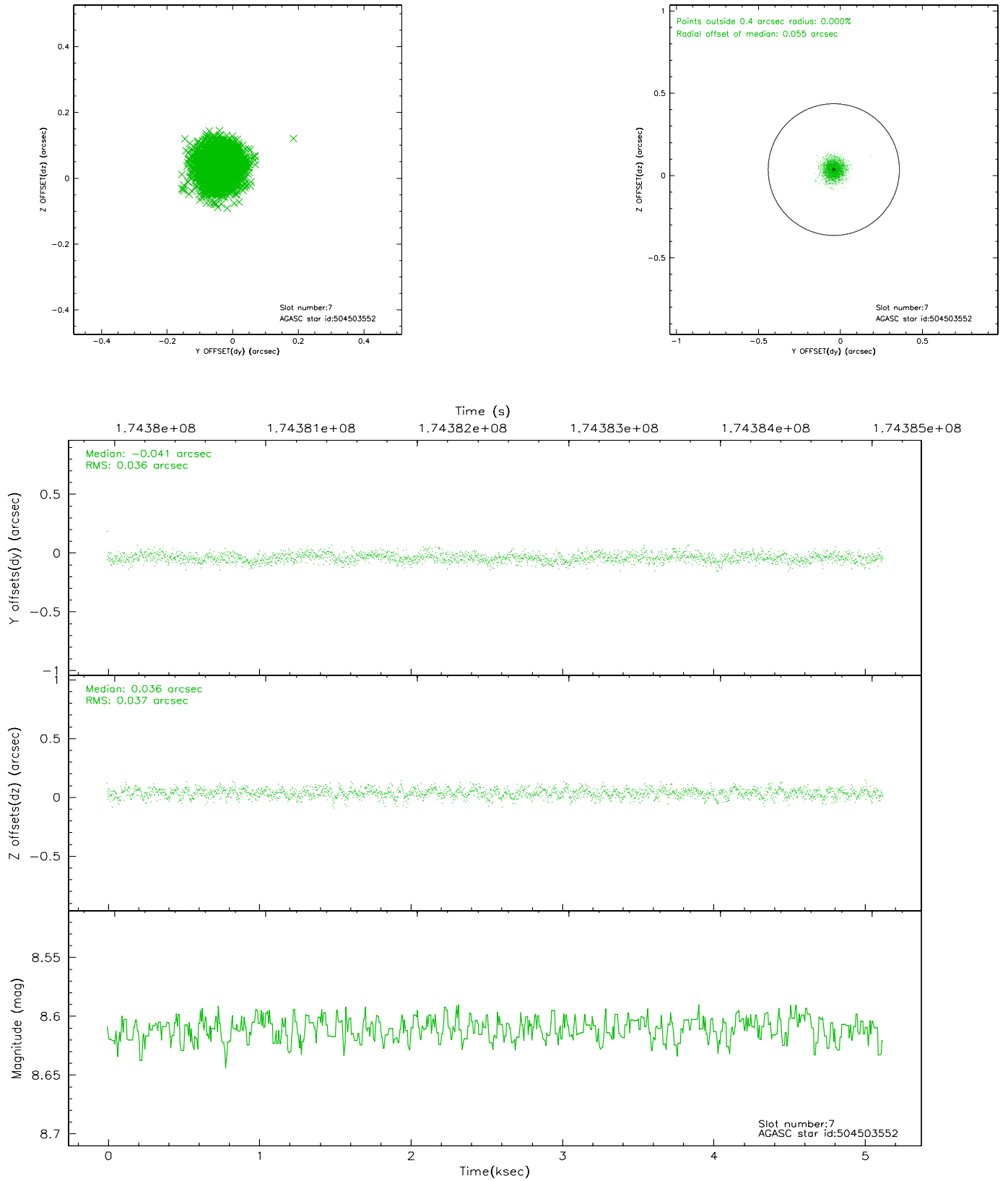
### 2.4.3 Slot 5



## 2.4.4 Slot 6

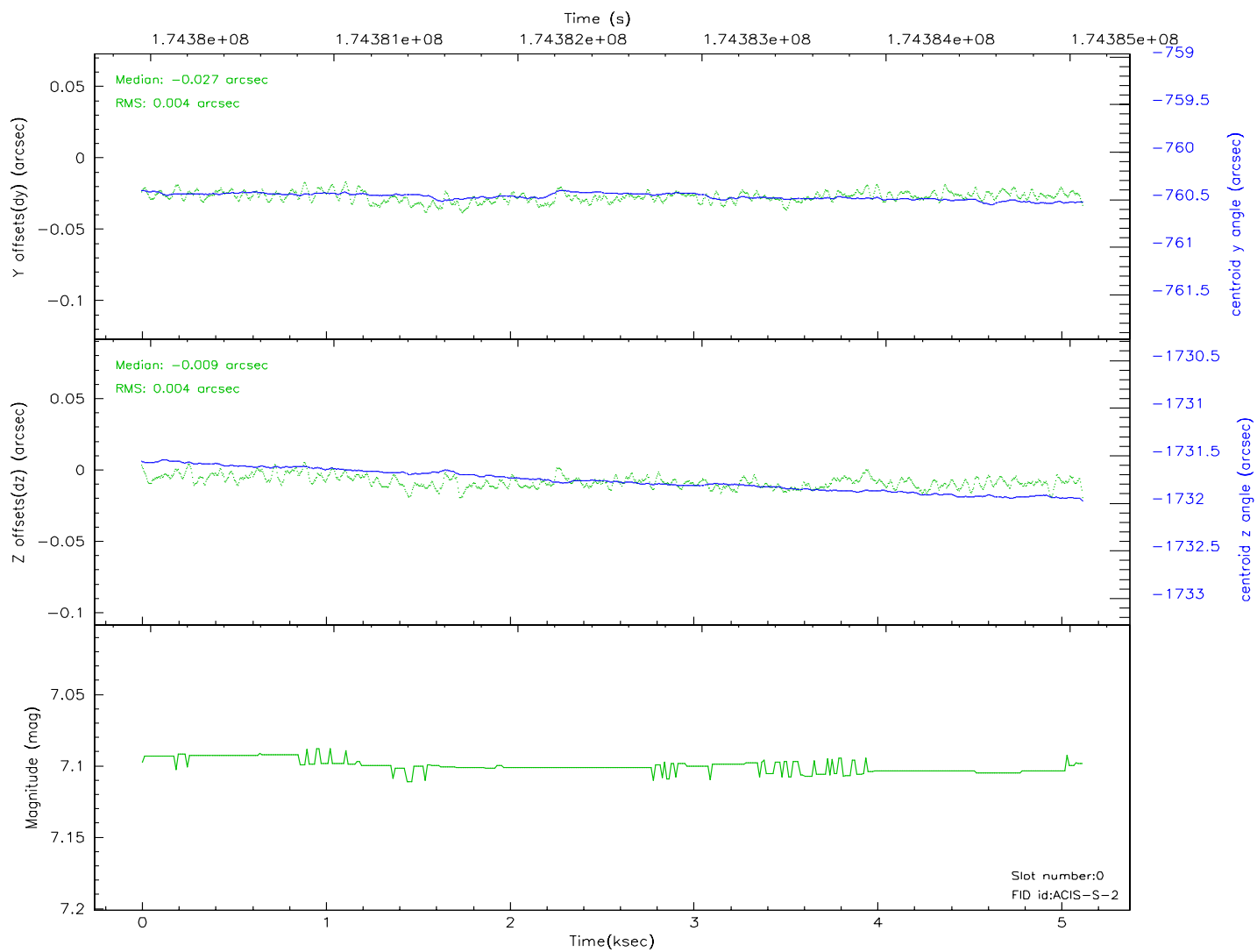
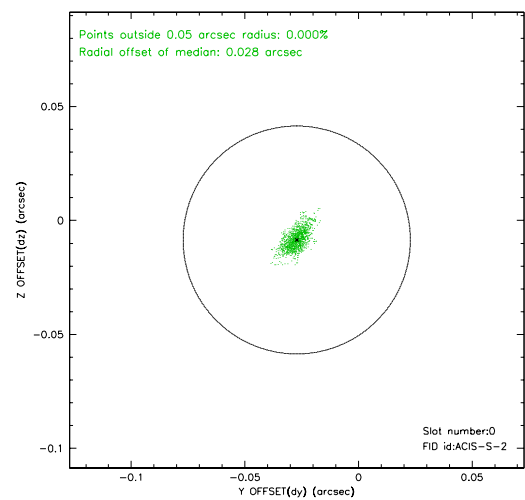
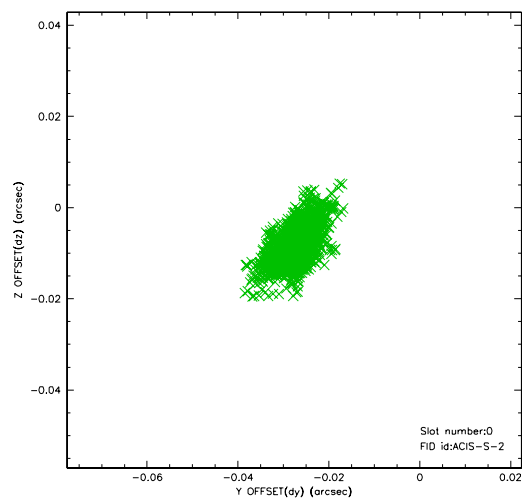


## 2.4.5 Slot 7

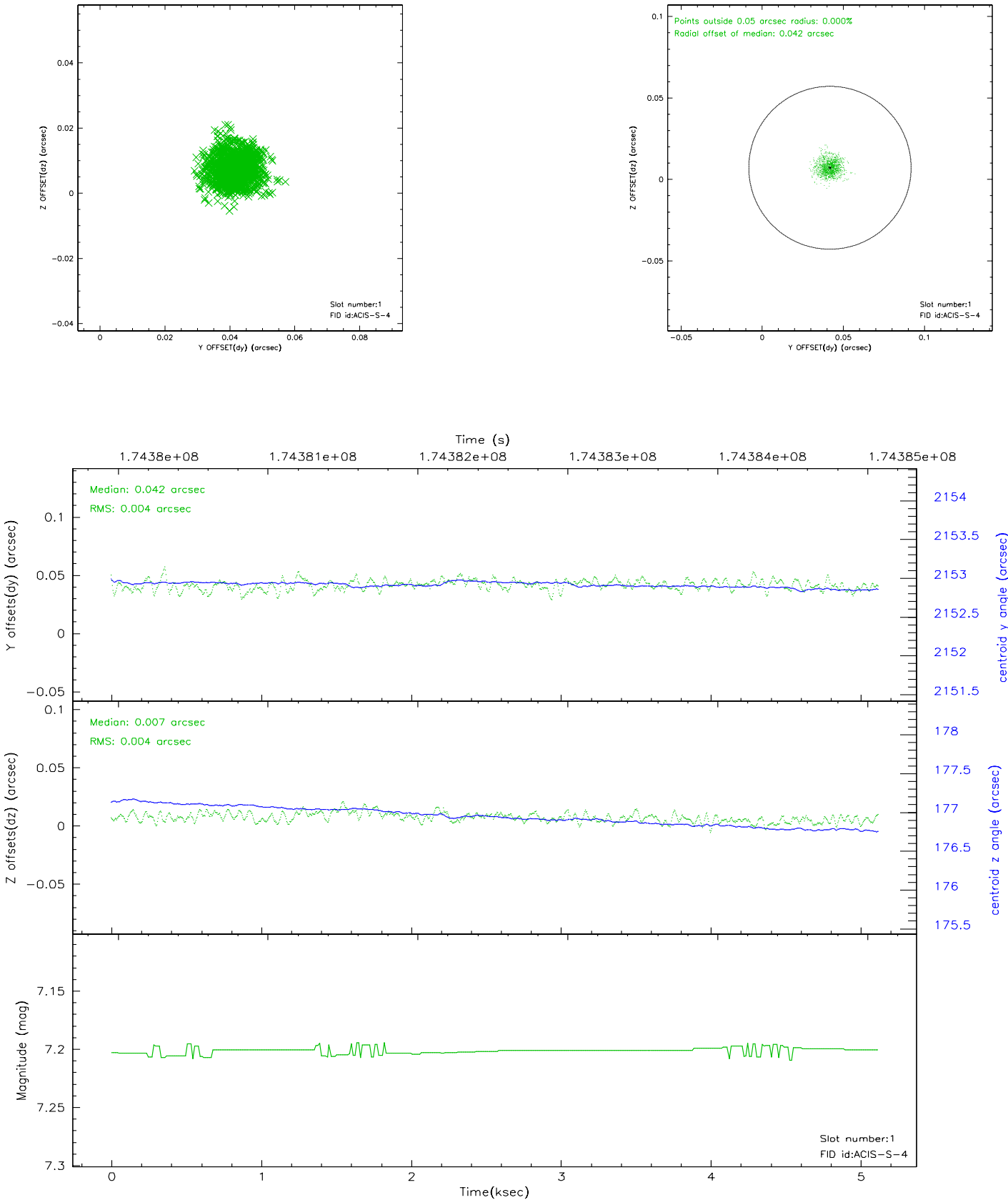


## 2.5 FID Slots

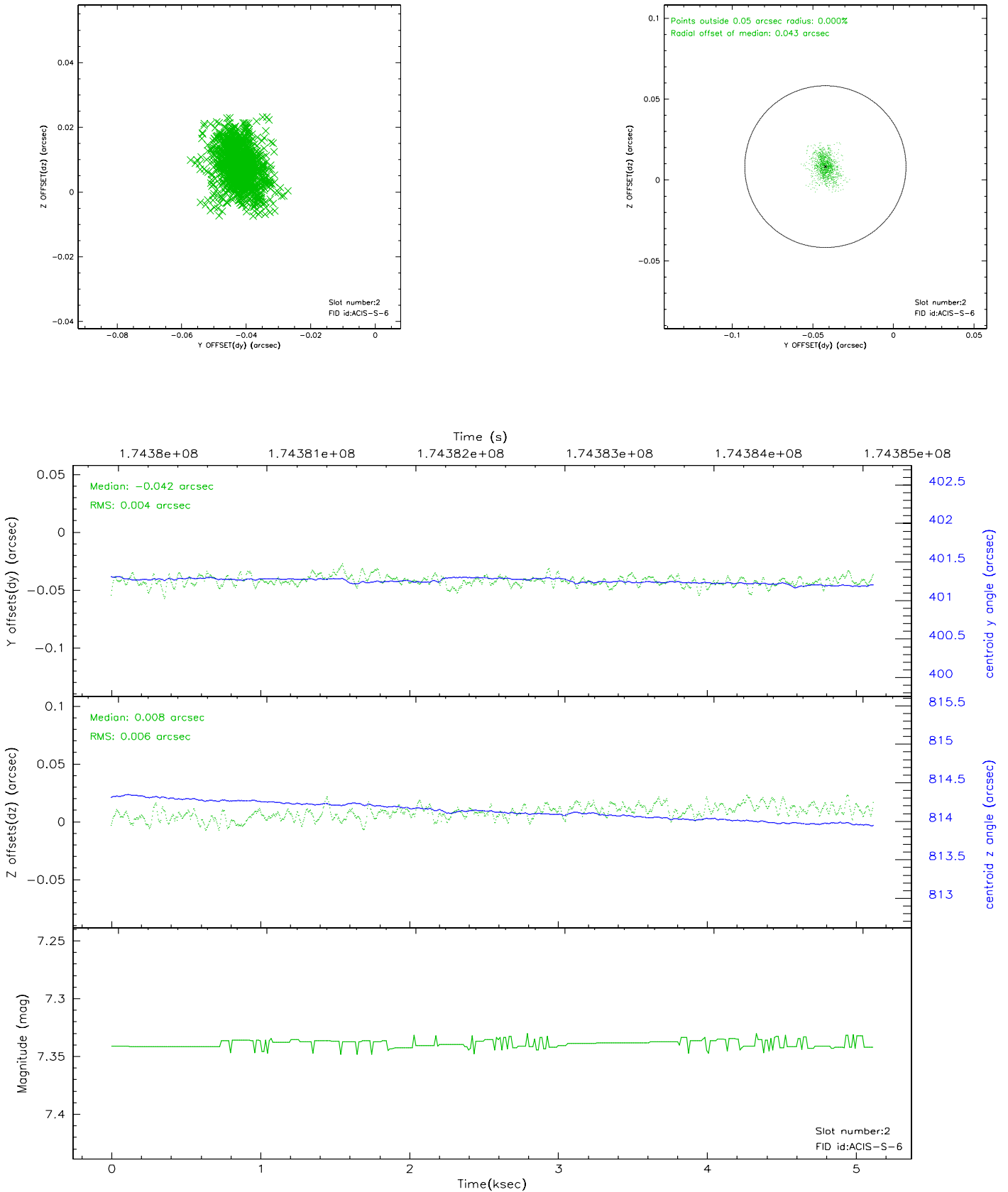
### 2.5.1 Slot 0



2.5.2 Slot 1

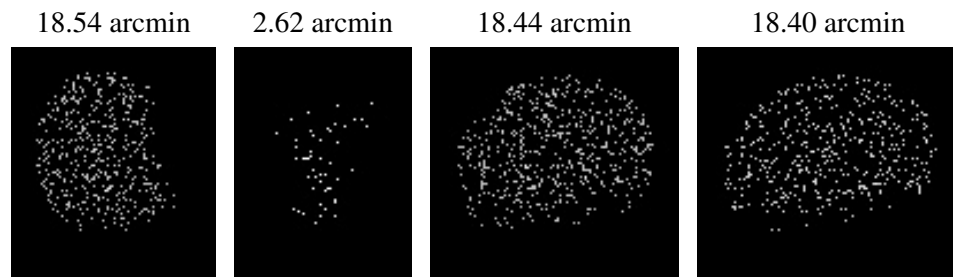


### 2.5.3 Slot 2





### 3 Point Sources



## A Summary

### A.1 Status

V&V Scientist	Beth Sundheim
V&V Date (YYYY-MM-DD)	2006.07.14
V&V Edition	1
V&V Disposition and Status	OK
V&V Charge Time	4.7

### A.2 Comments