

V&V Reference Report

L2 ASCDS Version : 7.6.8

Observation 3559 - L2 Version 001
Chandra X-Ray Center

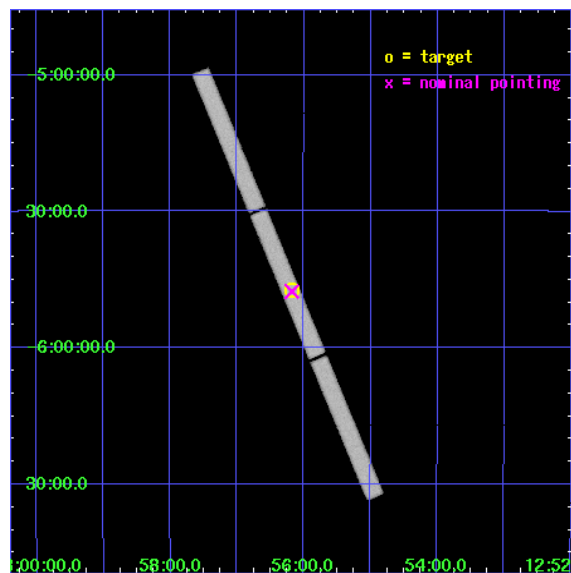
L2 Processing Date : Aug 3 2006

Contents

1	Front	2
2	OBI	3
2.1	OBI	3
2.1.1	Images	3
2.1.2	Parameters	4
2.1.3	Events	4
2.2	Compared Parameters	5
2.3	Aspect	6
2.4	Star Slots	9
2.4.1	Slot 3	9
2.4.2	Slot 4	10
2.4.3	Slot 5	11
2.4.4	Slot 6	12
2.4.5	Slot 7	13
2.5	FID Slots	14
2.5.1	Slot 0	14
2.5.2	Slot 1	15
2.5.3	Slot 2	16
3	Gratings	17
3.1	LETG Arm	17
A	Summary	19
A.1	Status	19
A.2	Comments	19

1 Front

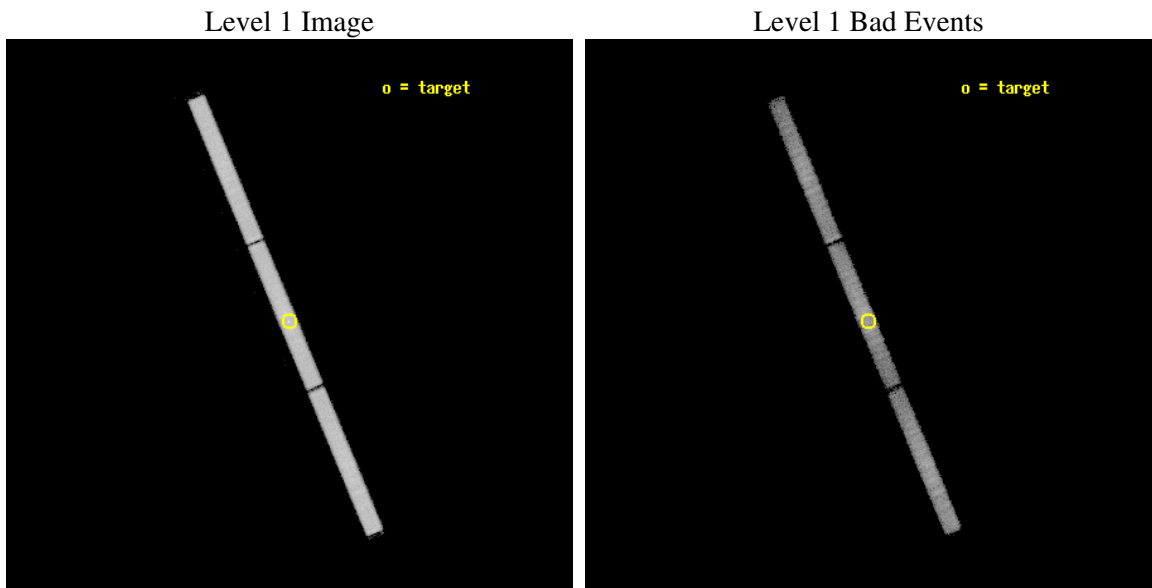
seq_num	700621
obs_id	3559
title	CHANDRA LETG SPECTROSCOPY OF THE GAMMA-RAY BLAZAR 3C 279 AS PART OF A MULTIFREQUENCY CAMPAIGN
observer	Dr. Peter Predehl
object	3C 279
ra_targ	194.046667
dec_targ	-5.789306
ra_nom	194.0447134499
dec_nom	-5.7937926878991
roll_nom	247.2668688127
revision	2
ontime	4981.7564612627
livetime	4955.6854736381
l2events	189935



2 OBI

2.1 OBI

2.1.1 Images



2.1.2 Parameters

obi_num	1
ascdsver	7.6.8
caldbver	3.2.2
date	2006-08-03T07:01:00
revision	2

sched_exp_time	5000.000000
ontime	5061.4502146244
l1events	292613

2.1.3 Events

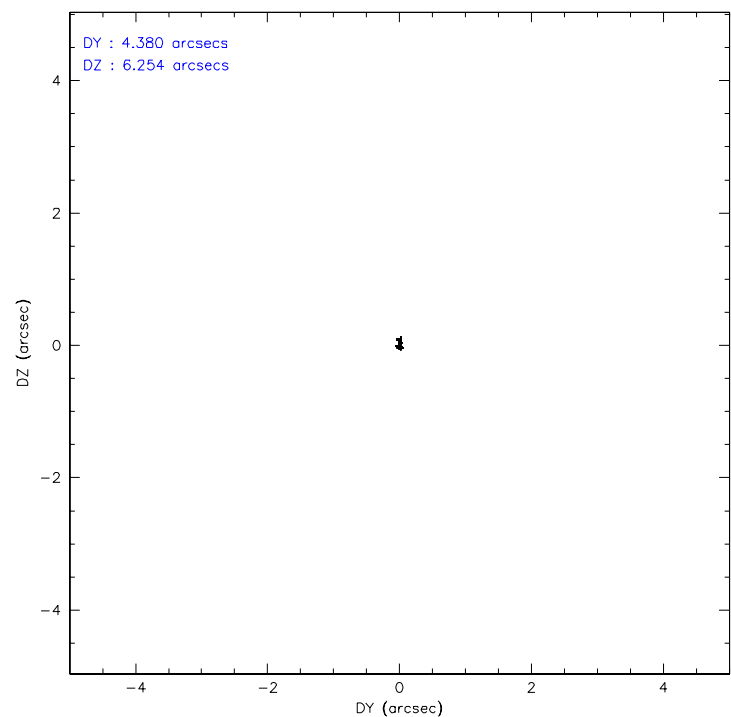
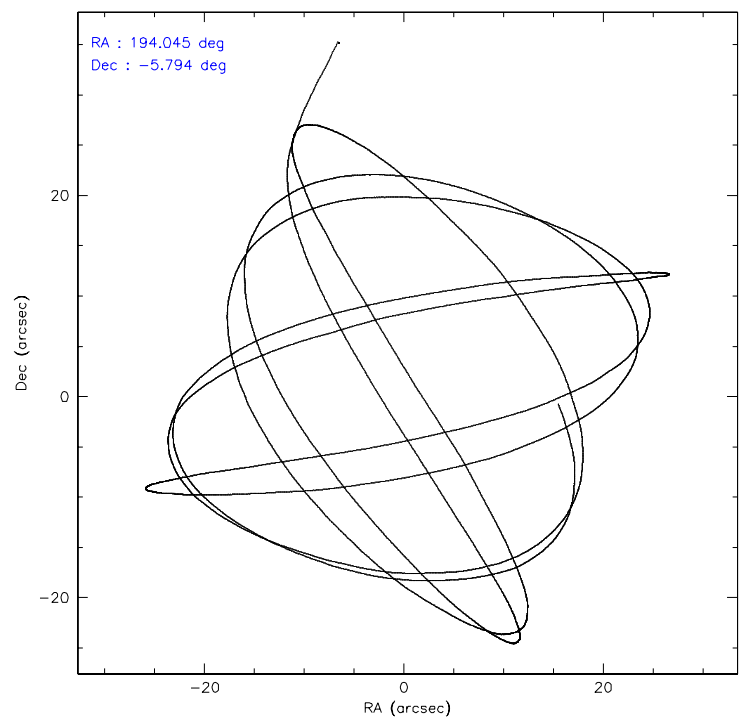
Level 1 Events

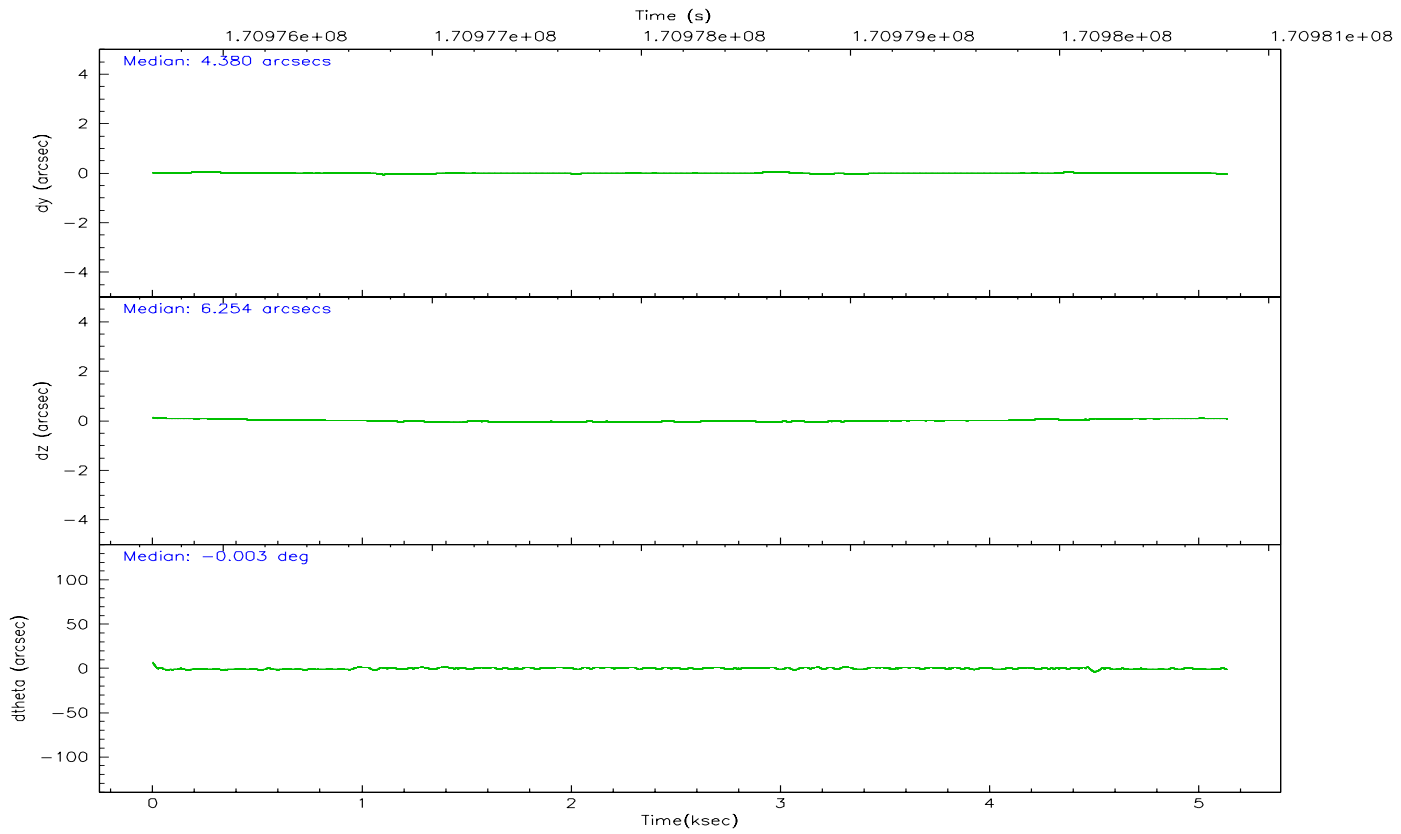
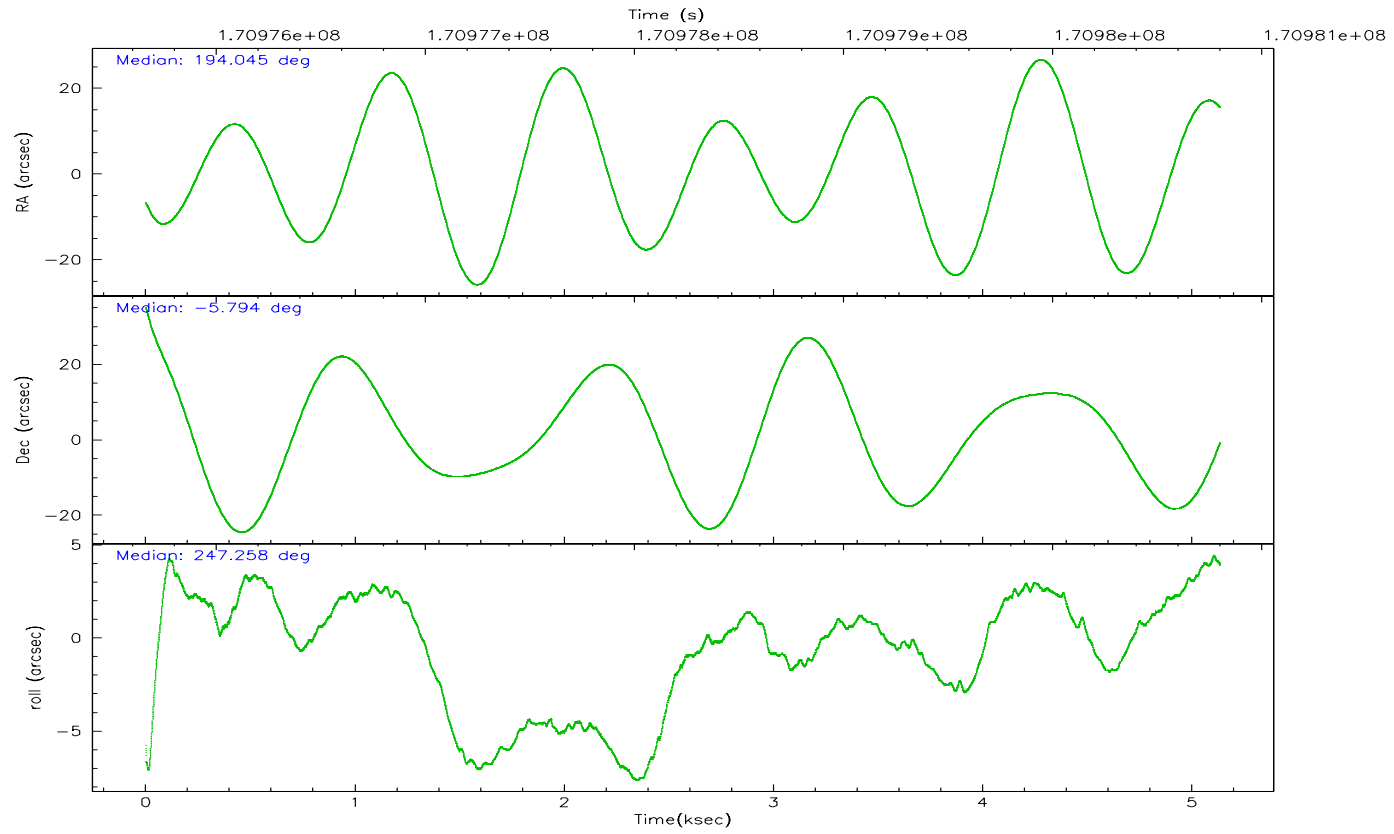
	segment 1	segment 2	segment 3
level 1 events	97719	96646	98248
rejected events	22518	24669	27037
rejected %	23%	25%	27%

2.2 Compared Parameters

Parameter	Planned	Actual	Parameter	Planned	Actual
Instrument	HRC	HRC	Obspar format version number	6	6
Detector	HRC-S	HRC-S	Obspar file type	PREDICTED	ACTUAL
Grating	LETG	LETG	Obspar update status	NONE	UPDATED
Data mode	OBSERVING	OBSERVING			
Observation mode	POINTING	POINTING			
Pointing RA	194.039683	194.044713449902			
Pointing Dec	-5.765409	-5.793792687899061			
Pointing Roll	247.199048	247.2668688126998			
SIM focus pos (mm)	-1.429586	-1.428180813131781			
SIM defocus (mm)	0.1037507710433287	0.1051558262725154			
SIM translation stage pos (mm)	250.455976	250.466033080201			
SIM translation stage offset (mm)	0	-0.01005468664627074			
Observation start time	170975801.184000	170974679.84863			
Observation start date	2003-06-02T21:15:37	2003-06-02T20:57:59			
Observation end time	170980801.184000	170981391.03642			
Observation end date	2003-06-02T22:38:57	2003-06-02T22:49:51			

2.3 Aspect



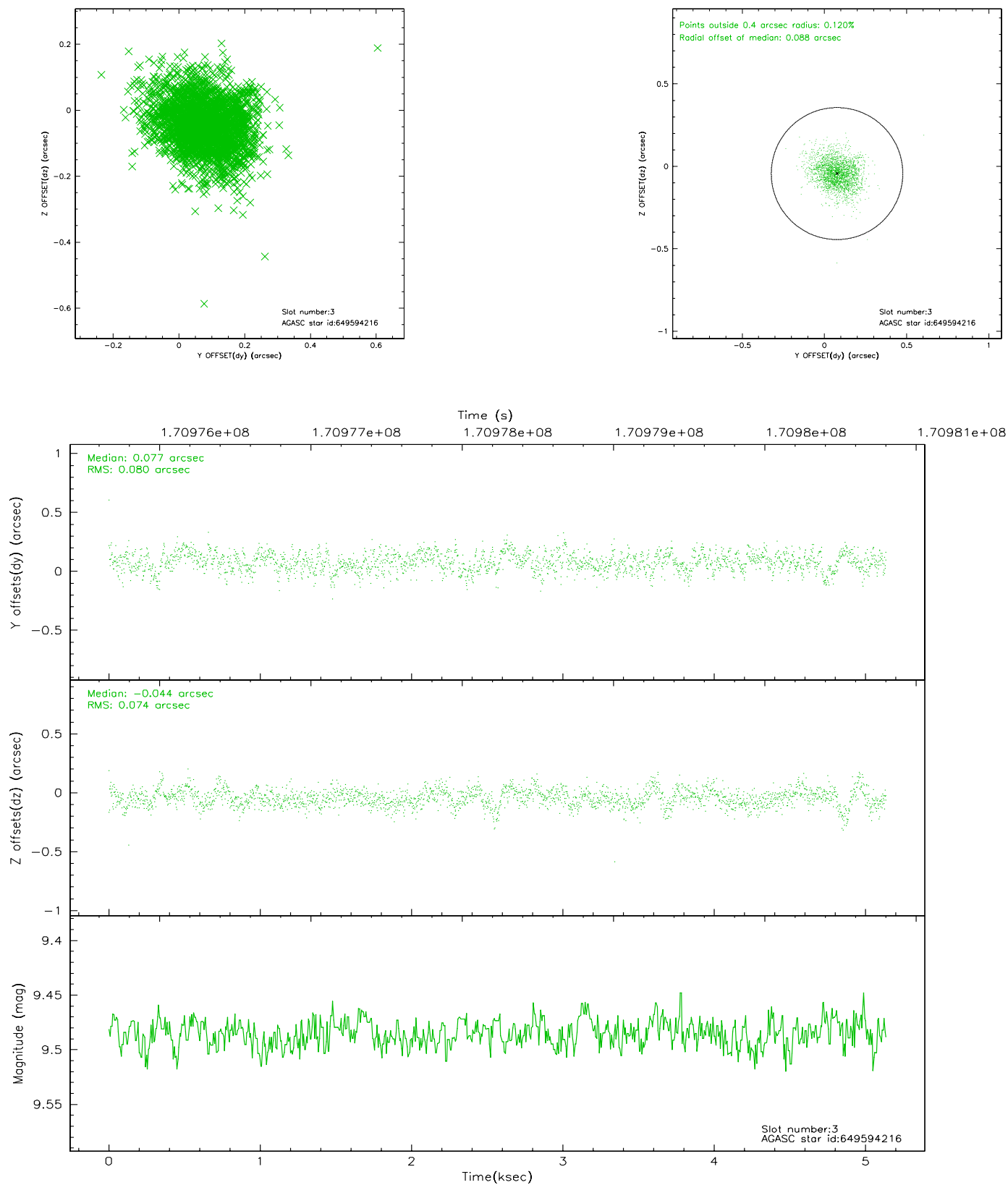


Slot Statistics

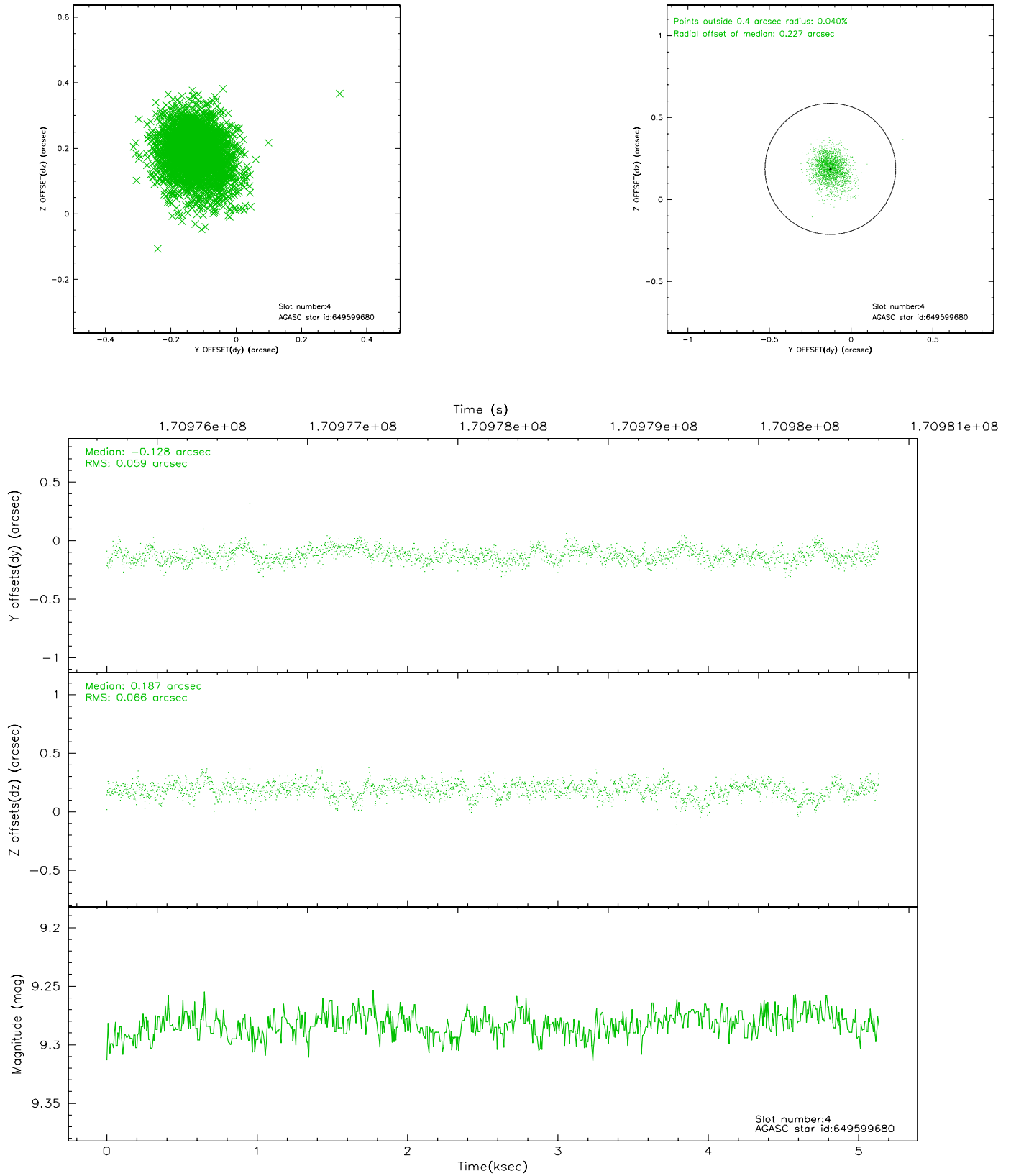
slot	status	id	mag	n_pts	med_dy	med_dz	dr1	dr2	ra	dec	mean_y	mean_z
0	FID	HRC-S-2	7.03	1253	0.119	-0.166	0.008	0.014	0.000000	0.000000	1241.20	-447.50
1	FID	HRC-S-3	7.04	1253	0.155	-0.105	0.005	0.009	0.000000	0.000000	-1160.16	574.41
2	FID	HRC-S-4	6.99	1253	0.131	-0.025	0.008	0.014	0.000000	0.000000	1238.87	577.83
3	GUIDE	649594216	9.49	2504	0.077	-0.044	0.114	0.185	193.273989	-6.022654	1917.89	-2167.57
4	GUIDE	649599680	9.28	2505	-0.128	0.187	0.093	0.157	194.094993	-5.408421	-1261.43	-316.44
5	GUIDE	649599704	8.67	2505	0.044	0.062	0.059	0.100	194.128261	-6.327014	1739.89	1075.50
6	GUIDE	649601232	8.46	2506	-0.053	0.120	0.081	0.125	194.416640	-6.392285	1558.03	2118.57
7	GUIDE	649600632	9.20	2504	0.053	-0.328	0.092	0.146	194.611004	-6.048463	147.65	2281.13

2.4 Star Slots

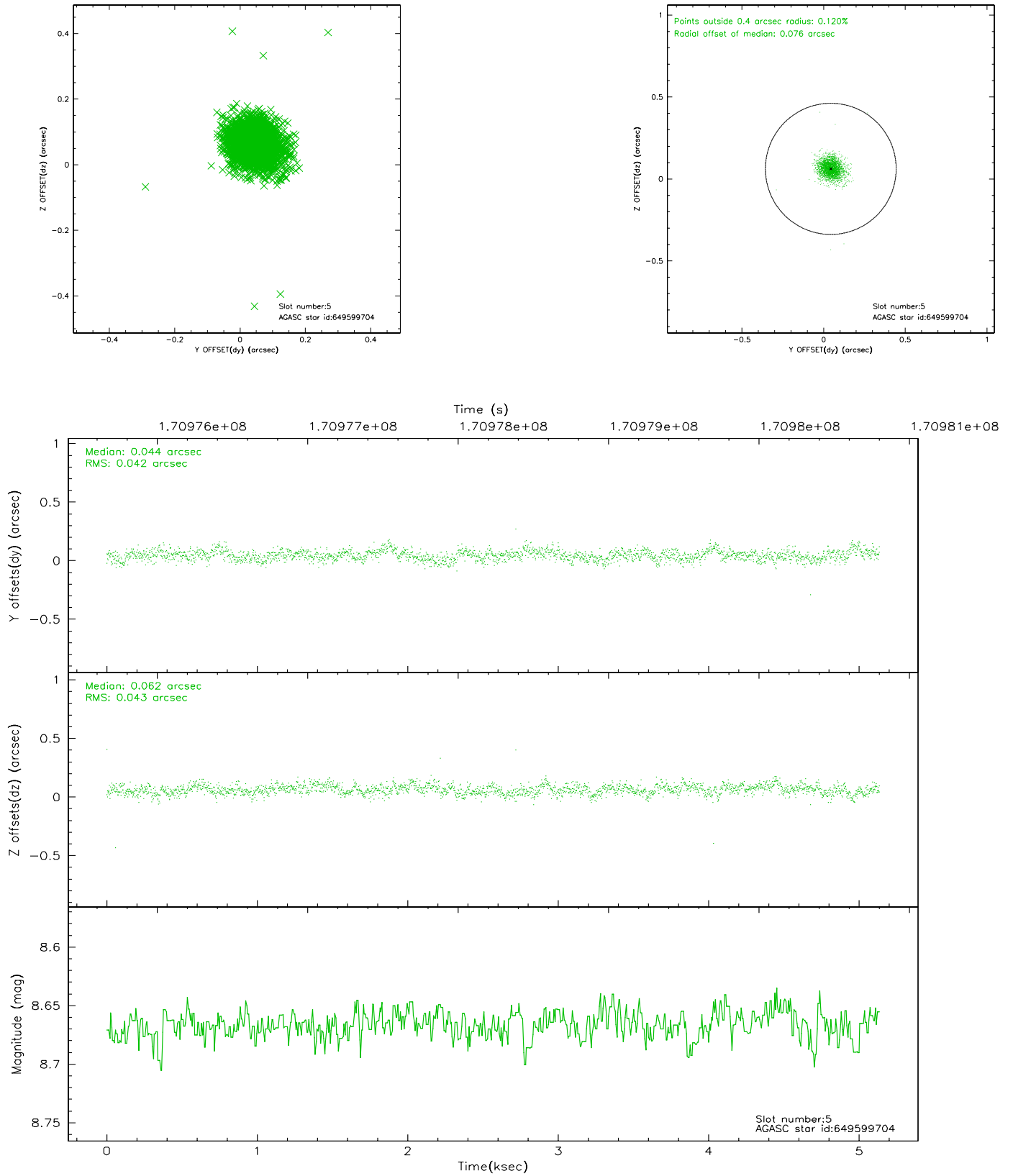
2.4.1 Slot 3



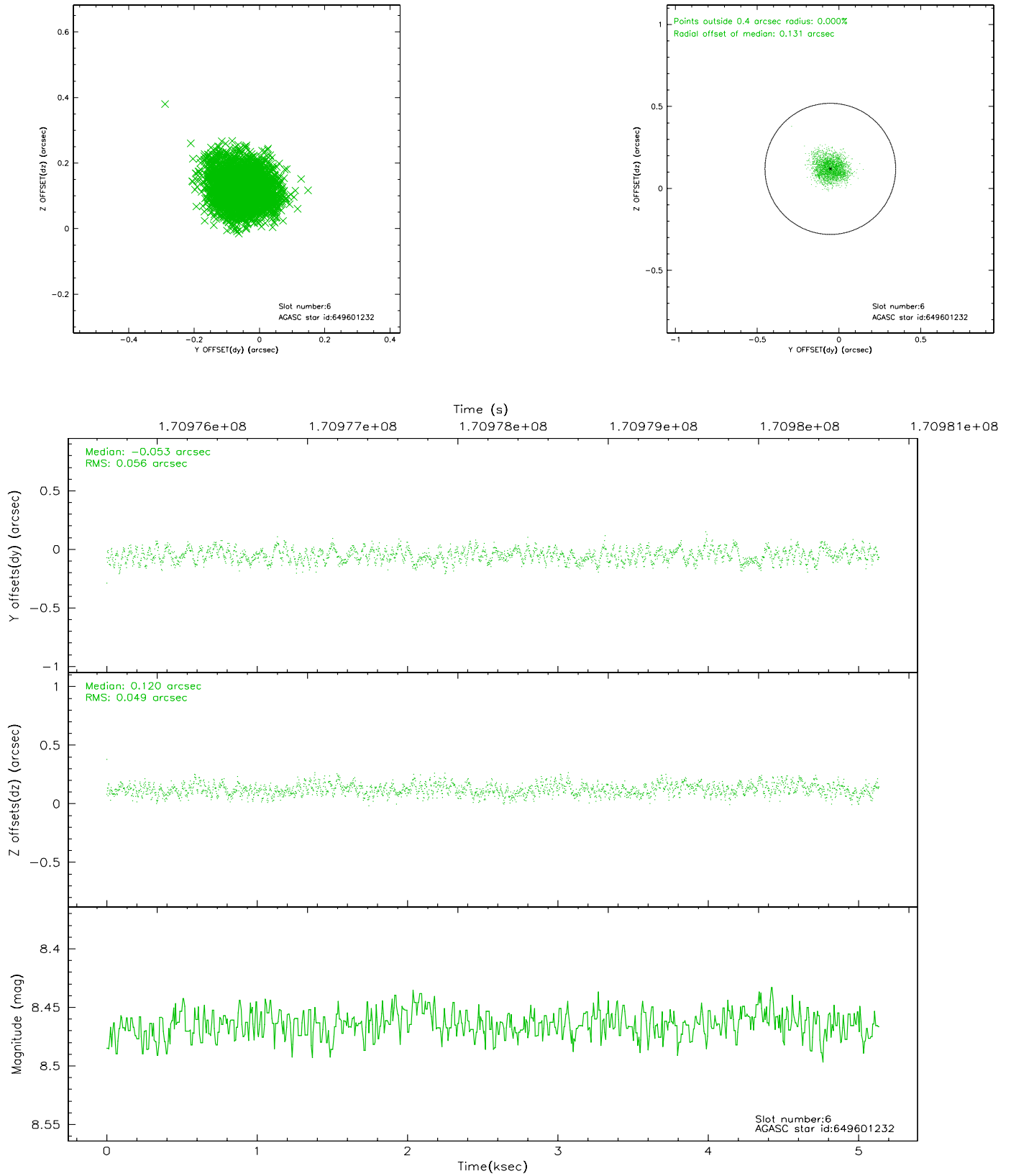
2.4.2 Slot 4



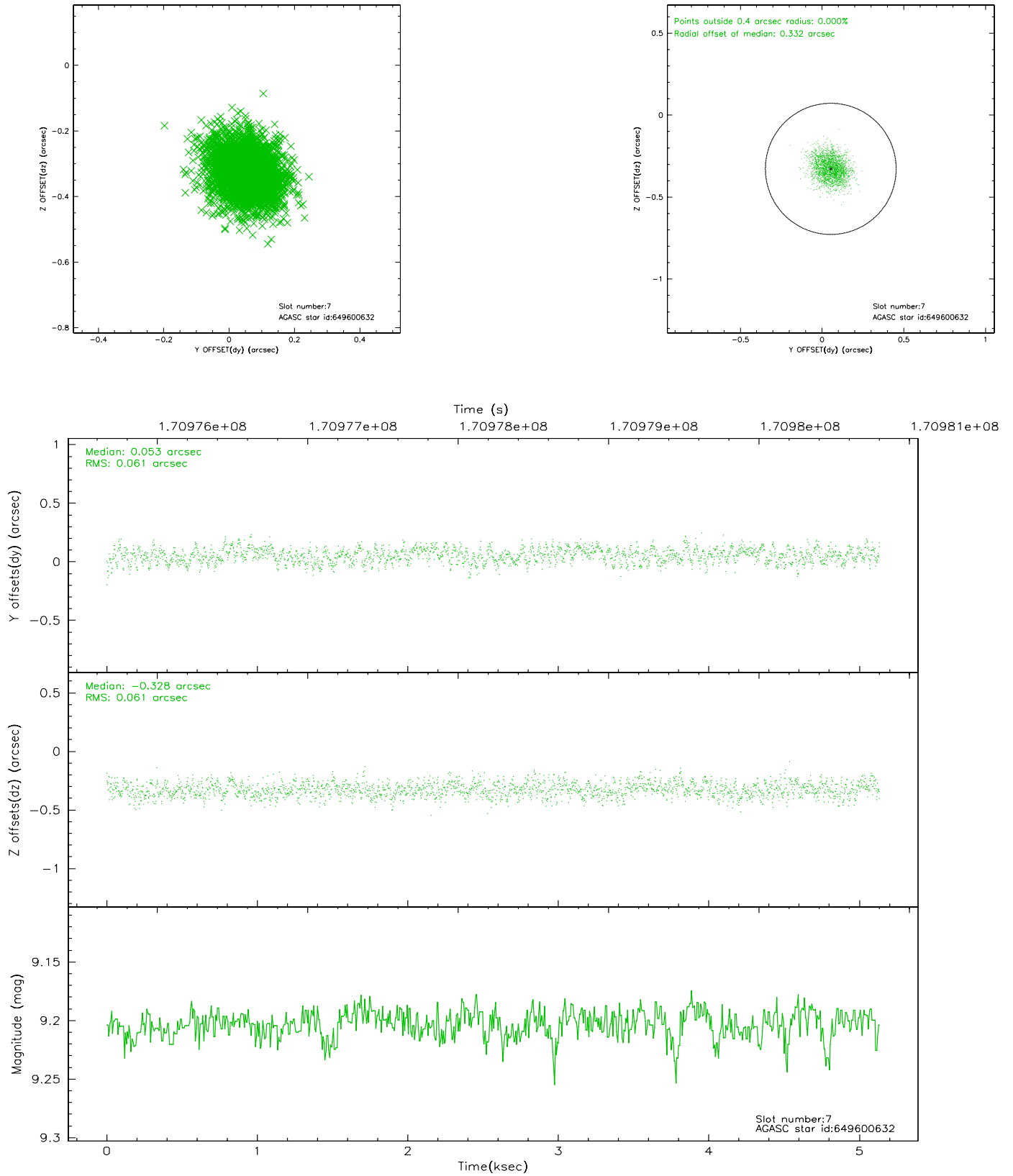
2.4.3 Slot 5



2.4.4 Slot 6

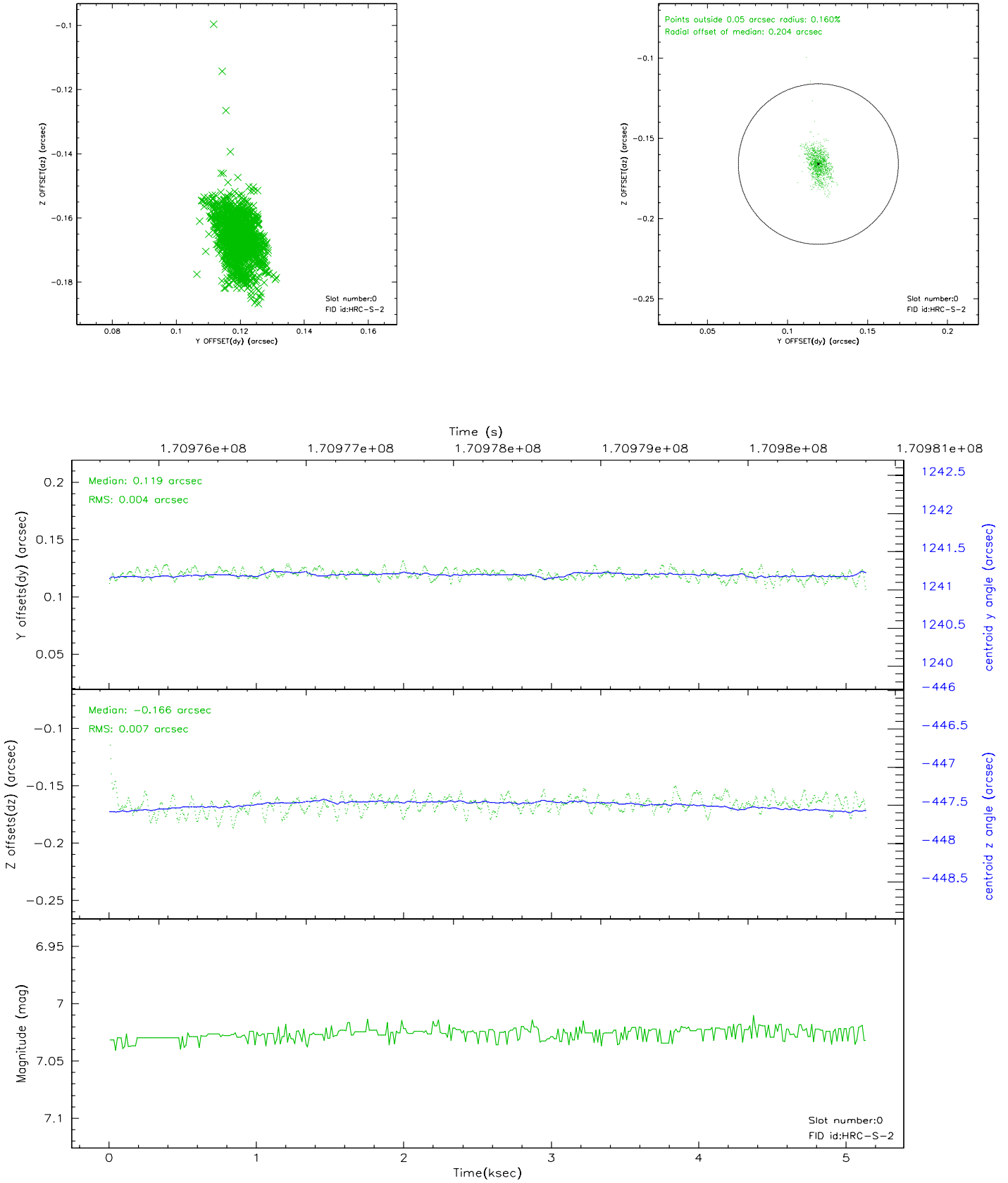


2.4.5 Slot 7

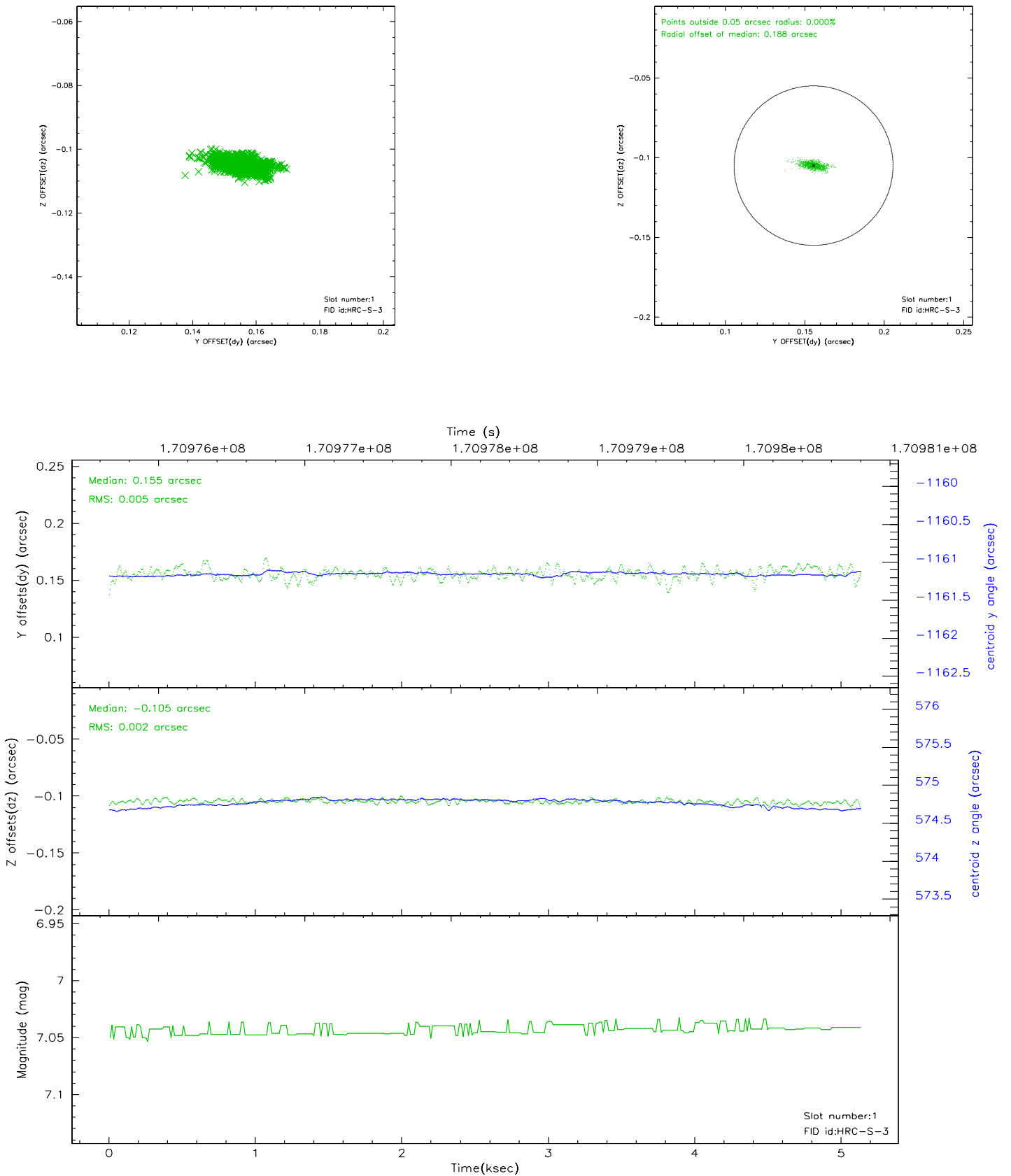


2.5 FID Slots

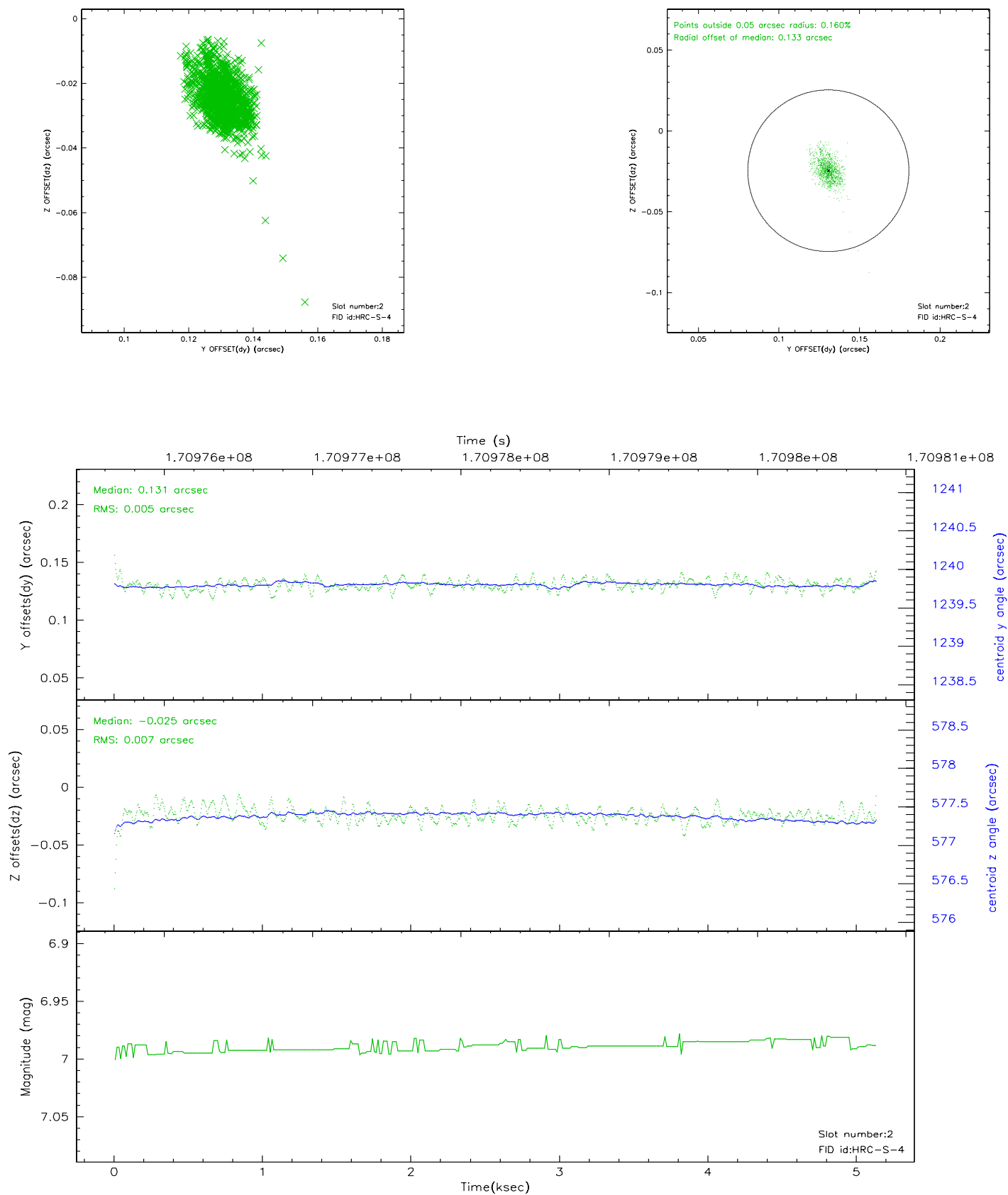
2.5.1 Slot 0



2.5.2 Slot 1

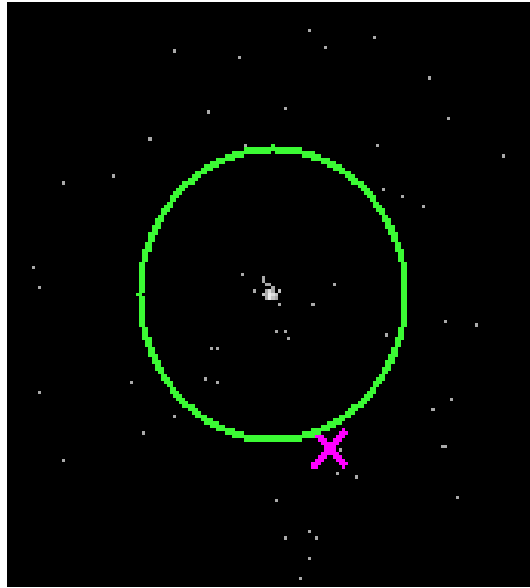


2.5.3 Slot 2

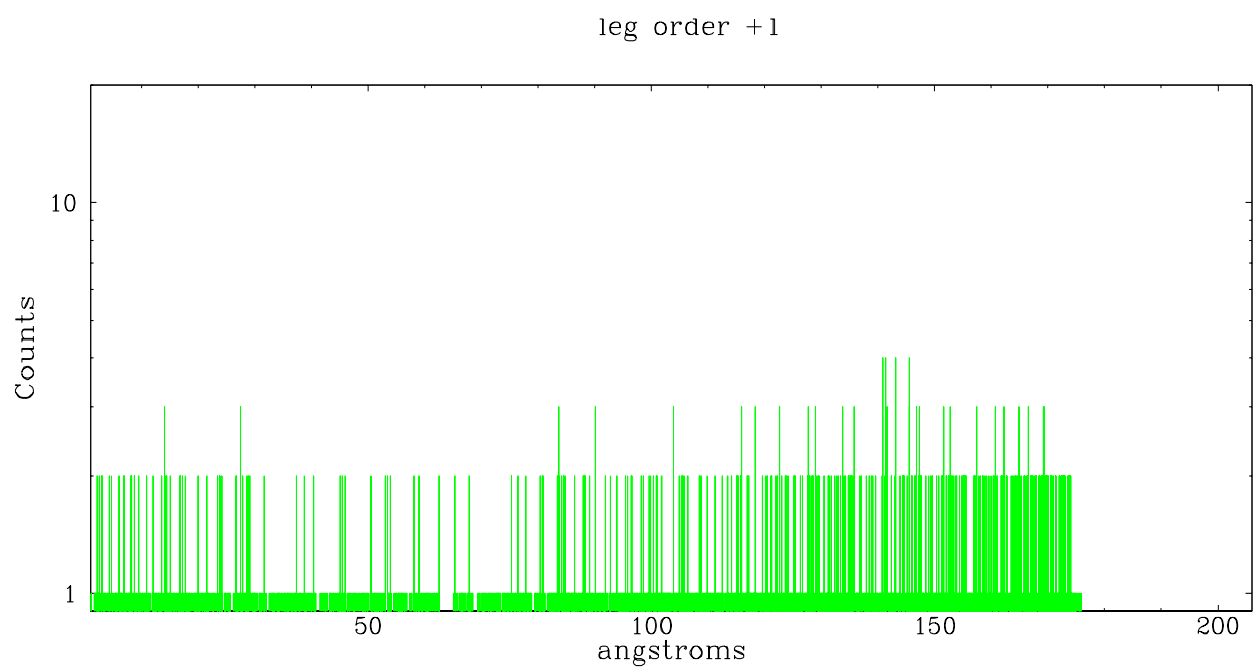
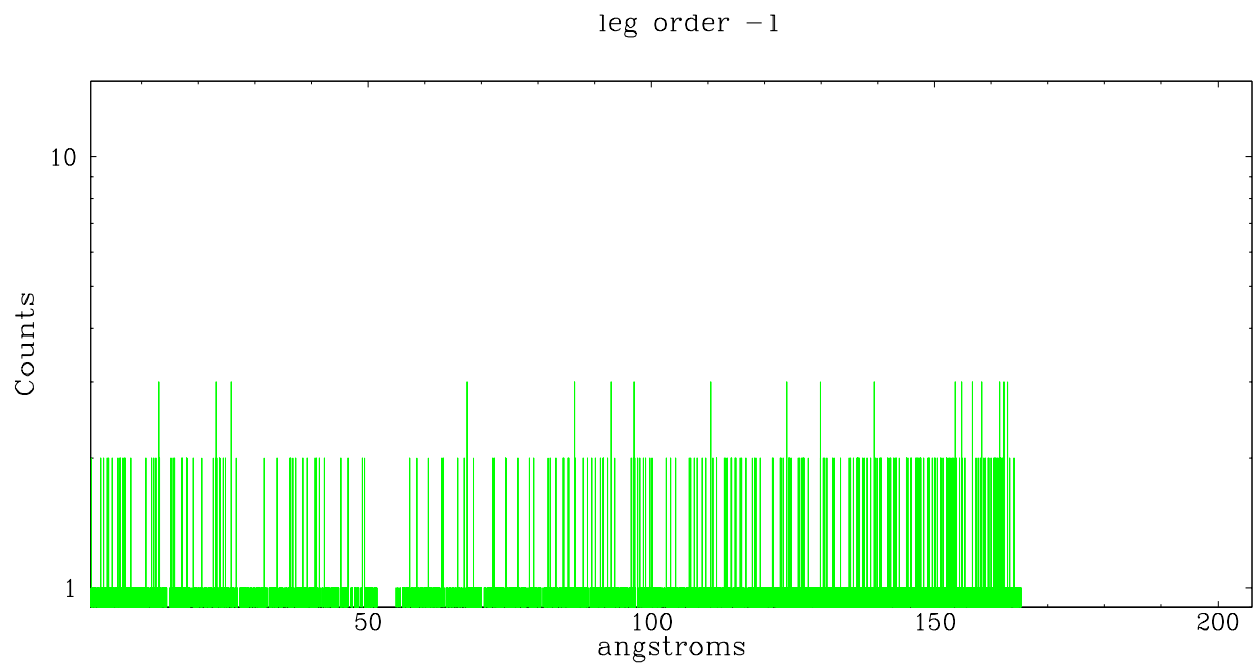


3 Gratings

3.1 LETG Arm



LETG Zero Order



A Summary

A.1 Status

V&V Scientist	Joy Nichols
V&V Date (YYYY-MM-DD)	2006.08.04
V&V Edition	1
V&V Disposition and Status	OK
V&V Charge Time	4.981

A.2 Comments

Observation did not meet requested time window to coordinate with INTEGRAL.

It's possible the INTEGRAL schedule changed after the request was entered and

the time window was modified to match INTEGRAL.