

# V&V Reference Report

## L2 ASCDS Version : 7.6.8

Observation 3556 - L2 Version 001  
Chandra X-Ray Center

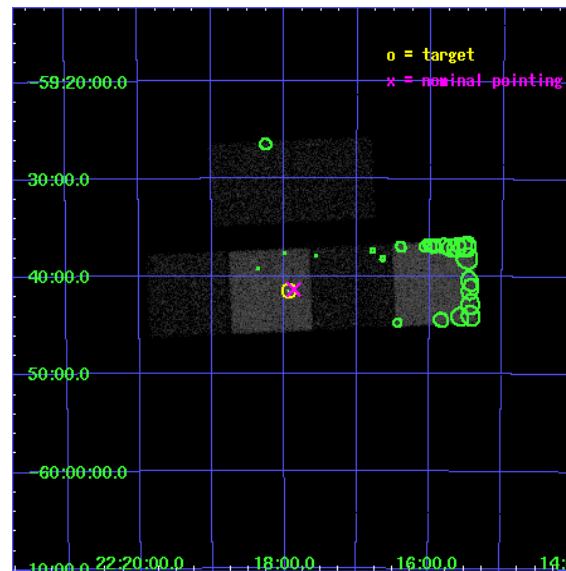
L2 Processing Date : Jul 27 2006

## Contents

<b>1</b>	<b>Front</b>	<b>2</b>
<b>2</b>	<b>OBI</b>	<b>3</b>
2.1	OBI . . . . .	3
2.1.1	Images . . . . .	3
2.1.2	Bias . . . . .	3
2.1.3	Parameters . . . . .	4
2.1.4	Events . . . . .	4
2.2	Compared Parameters . . . . .	5
2.3	Aspect . . . . .	6
2.4	Star Slots . . . . .	9
2.4.1	Slot 3 . . . . .	9
2.4.2	Slot 4 . . . . .	10
2.4.3	Slot 5 . . . . .	11
2.4.4	Slot 6 . . . . .	12
2.4.5	Slot 7 . . . . .	13
2.5	FID Slots . . . . .	14
2.5.1	Slot 0 . . . . .	14
2.5.2	Slot 1 . . . . .	15
2.5.3	Slot 2 . . . . .	16
<b>3</b>	<b>Point Sources</b>	<b>17</b>
<b>A</b>	<b>Summary</b>	<b>18</b>
A.1	Status . . . . .	18
A.2	Comments . . . . .	18

# 1 Front

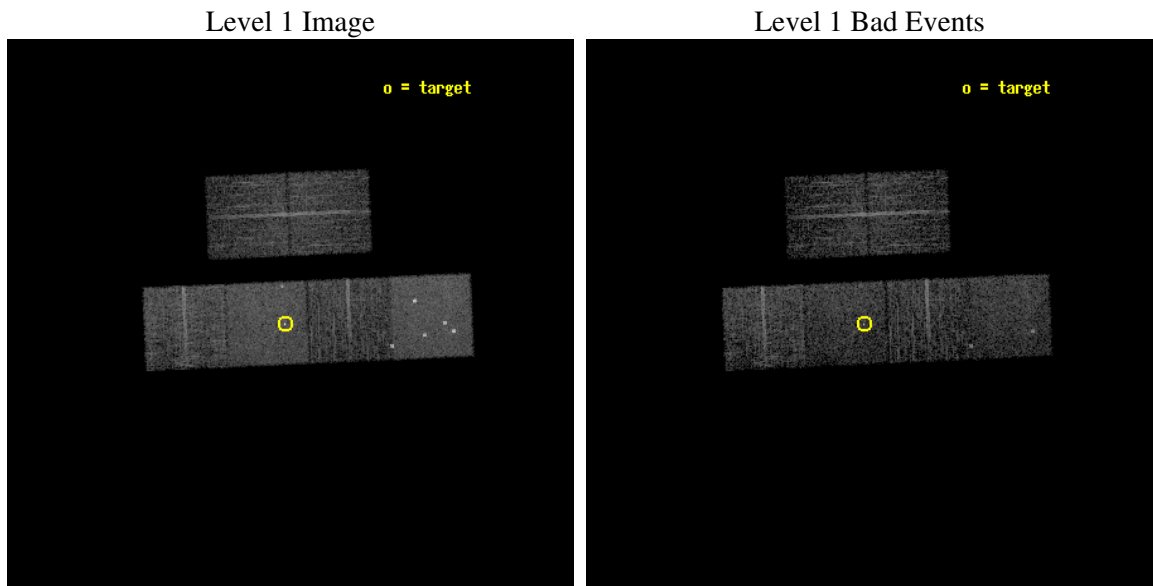
seq_num	700618
obs_id	3556
title	MONITORING THE X-RAY TRANSIENT AGN RX J2217.9-5941
observer	Dr. Peter Predehl
object	RX J2217.9-5941
dtcycle	0
cycle	P
ra_targ	334.485833
dec_targ	-59.691667
ra_nom	334.46728258805
dec_nom	-59.689593475117
roll_nom	177.42548725348
revision	2
ontime	4751.9999822974
livetime	4691.8272972107
ontime2	4751.9999822974
ontime3	4751.9999822974
ontime5	4751.9999822974
ontime6	4751.9999822974
ontime7	4751.9999822974
ontime8	4748.7591516078
l2events	52547



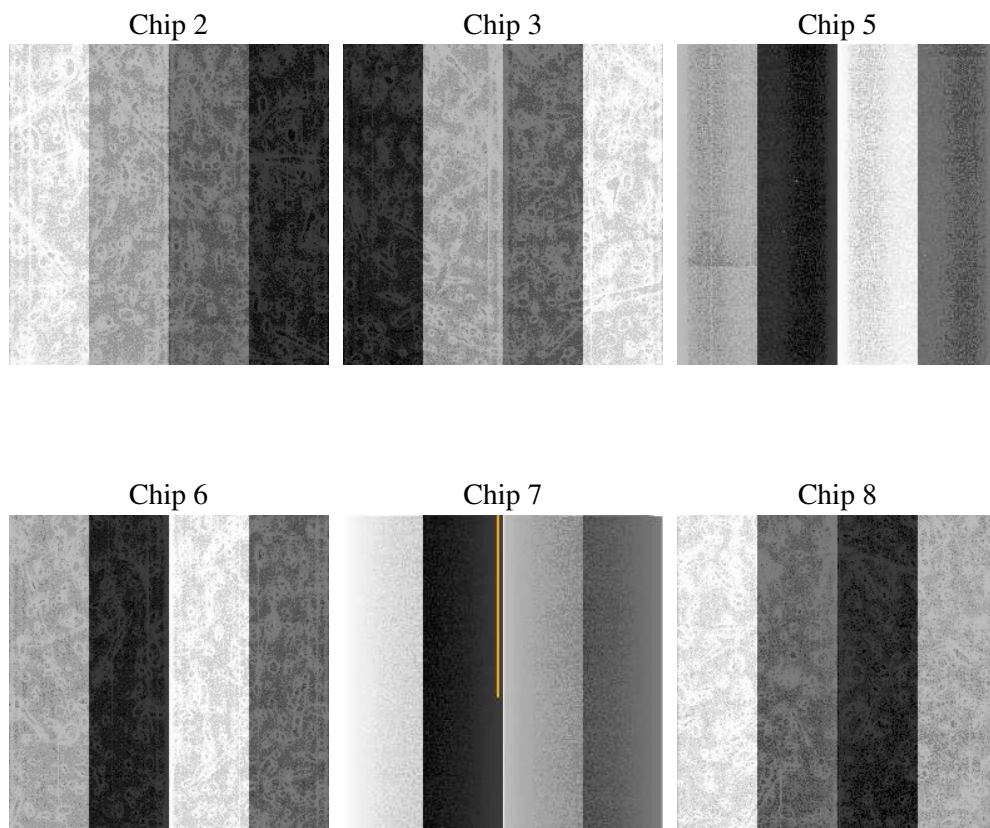
## 2 OBI

### 2.1 OBI

#### 2.1.1 Images



#### 2.1.2 Bias



### 2.1.3 Parameters

obi_num	0
ascdsver	7.6.8
caldsver	3.2.2
date	2006-07-28T02:04:39
revision	2

sched_exp_time	5000.000000
ontime	4757.787339896
ontime2	4757.7873099744
ontime3	4761.0283499658
ontime5	4757.7873598039
ontime6	4761.0283499658
ontime7	4757.787339896
ontime8	4757.7874196172
l1events	225758

### 2.1.4 Events

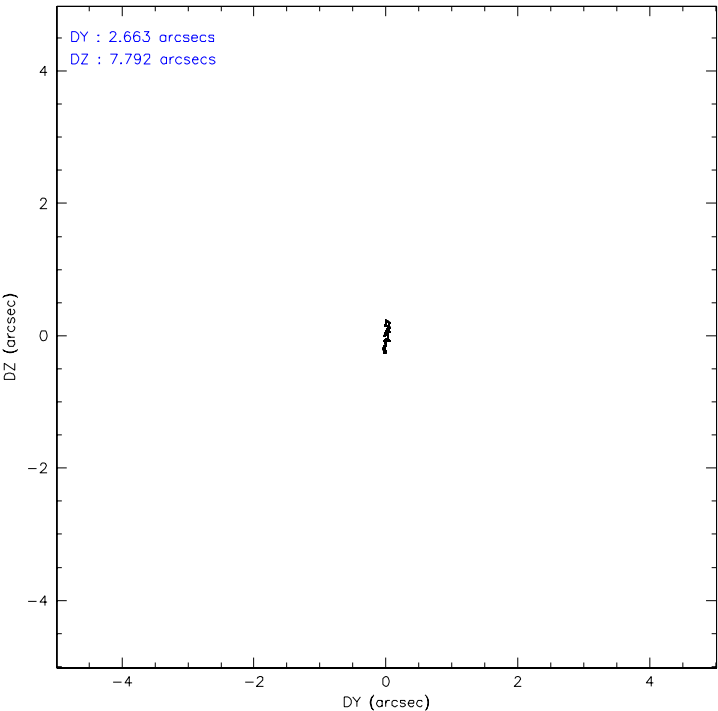
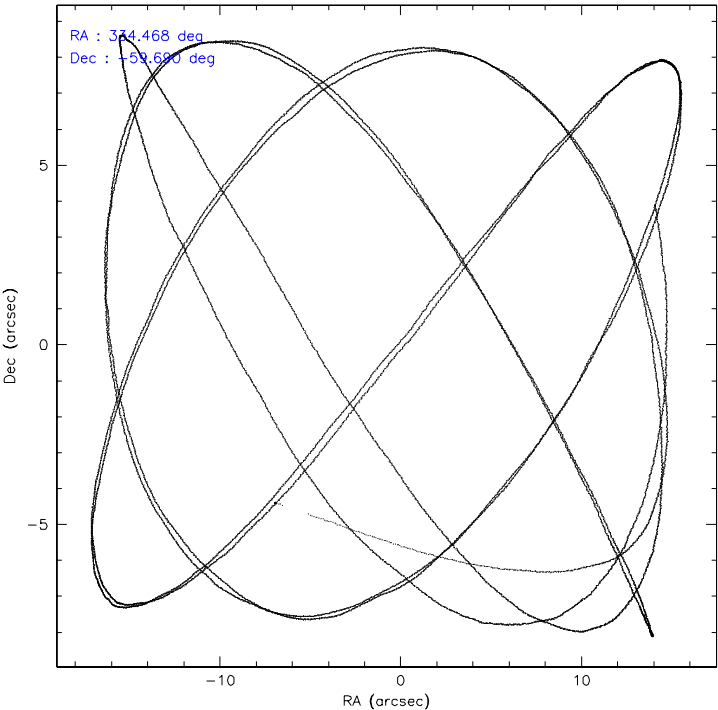
	ccd 2	ccd 3	ccd 5	ccd 6	ccd 7	ccd 8
level 1 events	30378	27856	52146	30719	44484	40175
rejected events	26893	24340	25451	27095	25279	33008
rejected %	88%	87%	48%	88%	56%	82%

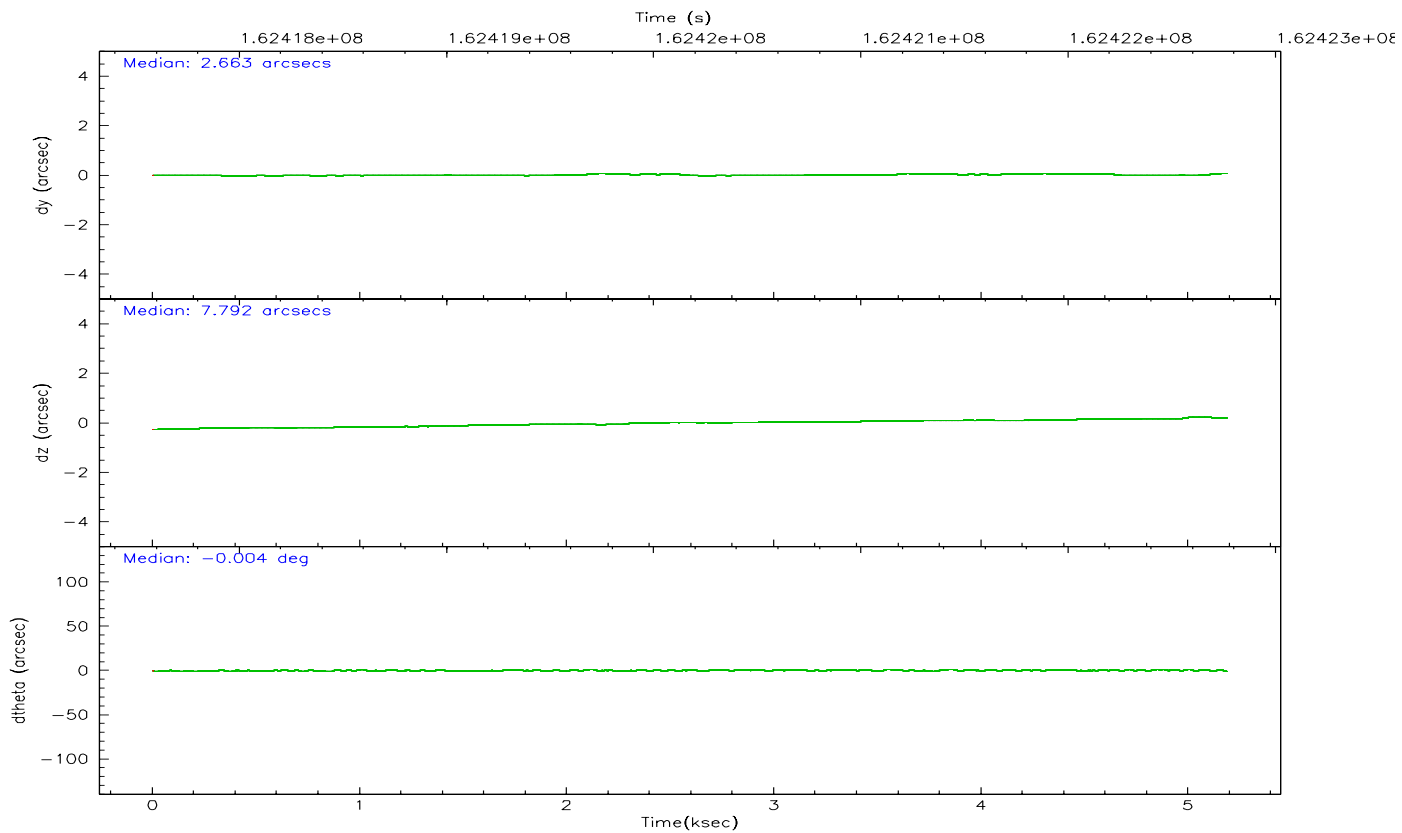
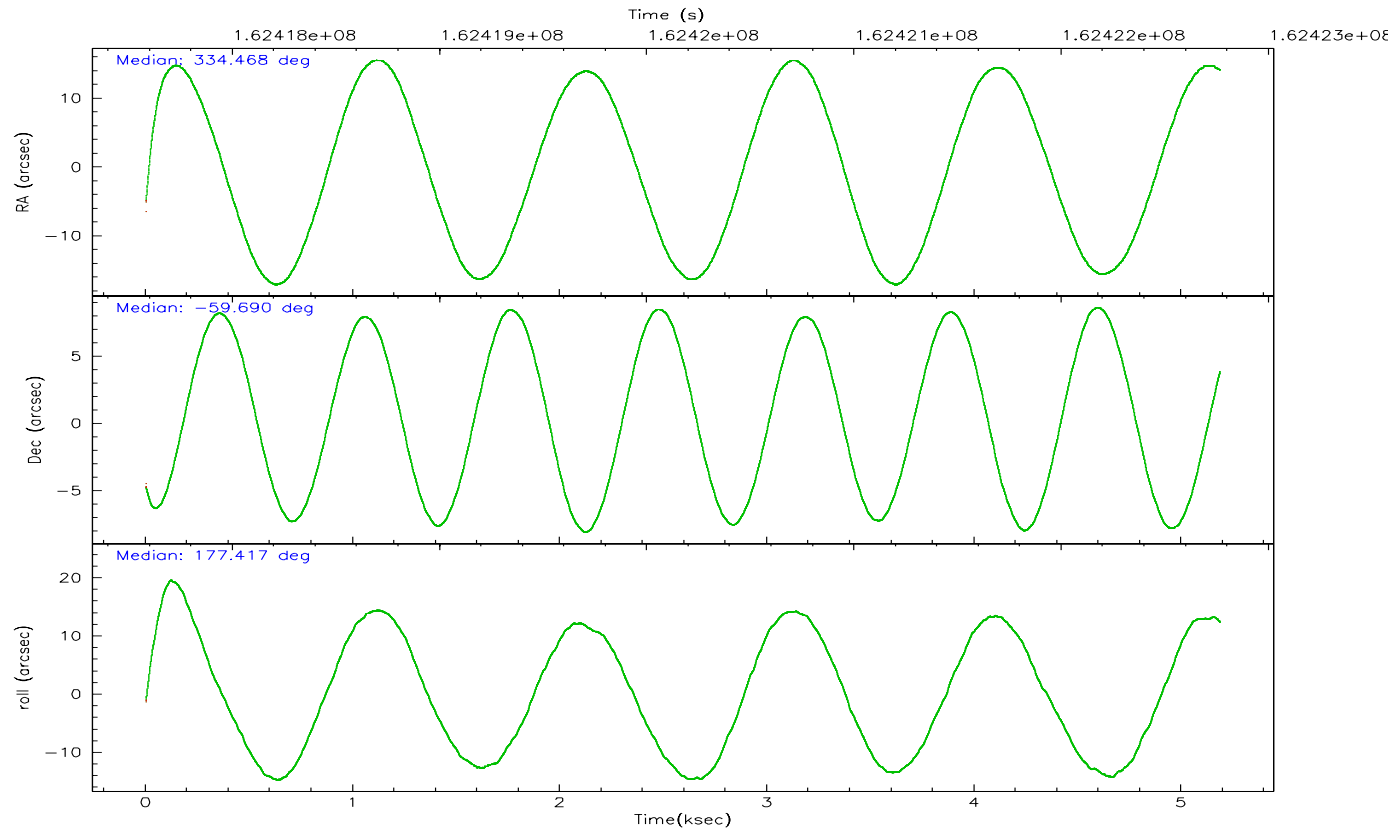
	ccd 2	ccd 3	ccd 5	ccd 6	ccd 7	ccd 8
grade 0 events	1609	1622	5486	1542	1794	2317
	5%	5%	10%	5%	4%	5%
grade 1 events	23	15	407	13	74	35
	0%	0%	0%	0%	0%	0%
grade 2 events	690	640	7449	664	4597	1510
	2%	2%	14%	2%	10%	3%
grade 3 events	325	317	651	360	1028	769
	1%	1%	1%	1%	2%	1%
grade 4 events	304	348	667	365	1065	713
	1%	1%	1%	1%	2%	1%
grade 5 events	1124	1262	2222	1412	2737	1655
	3%	4%	4%	4%	6%	4%
grade 6 events	562	594	12476	700	10763	1865
	1%	2%	23%	2%	24%	4%
grade 7 events	25741	23058	22788	25663	22426	31311
	84%	82%	43%	83%	50%	77%

## 2.2 Compared Parameters

Parameter	Planned	Actual	Parameter	Planned	Actual
Instrument	ACIS	ACIS	Obspar format version number	6	6
Detector	ACIS-235678	ACIS-235678	Obspar file type	PREDICTED	ACTUAL
Grating	NONE	NONE	Obspar update status	NONE	UPDATED
Data mode	FAINT	FAINT	On-chip summing requested	N	N
Observation mode	POINTING	POINTING	Subarray requested	NONE	NONE
Pointing RA	334.514679	334.4672825880521	Alternating exposures requested	N	N
Pointing Dec	-59.676668	-59.68959347511741	Primary exposure time	0.000000	3.2
Pointing Roll	177.309795	177.4254872534766			
SIM focus pos (mm)	-0.684267	-0.6828225247311905			
SIM defocus (mm)	0	0.001444936568705701			
SIM translation stage pos (mm)	-190.132523	-190.145094680475			
SIM translation stage offset (mm)	0	0.01257209746719923			
Observation start time	162417775.184000	162416523.47473			
Observation start date	2003-02-23T20:01:51	2003-02-23T19:42:03			
Observation end time	162422775.184000	162423692.83753			
Observation end date	2003-02-23T21:25:11	2003-02-23T21:41:32			
Read mode	TIMED	TIMED			

2.3 Aspect





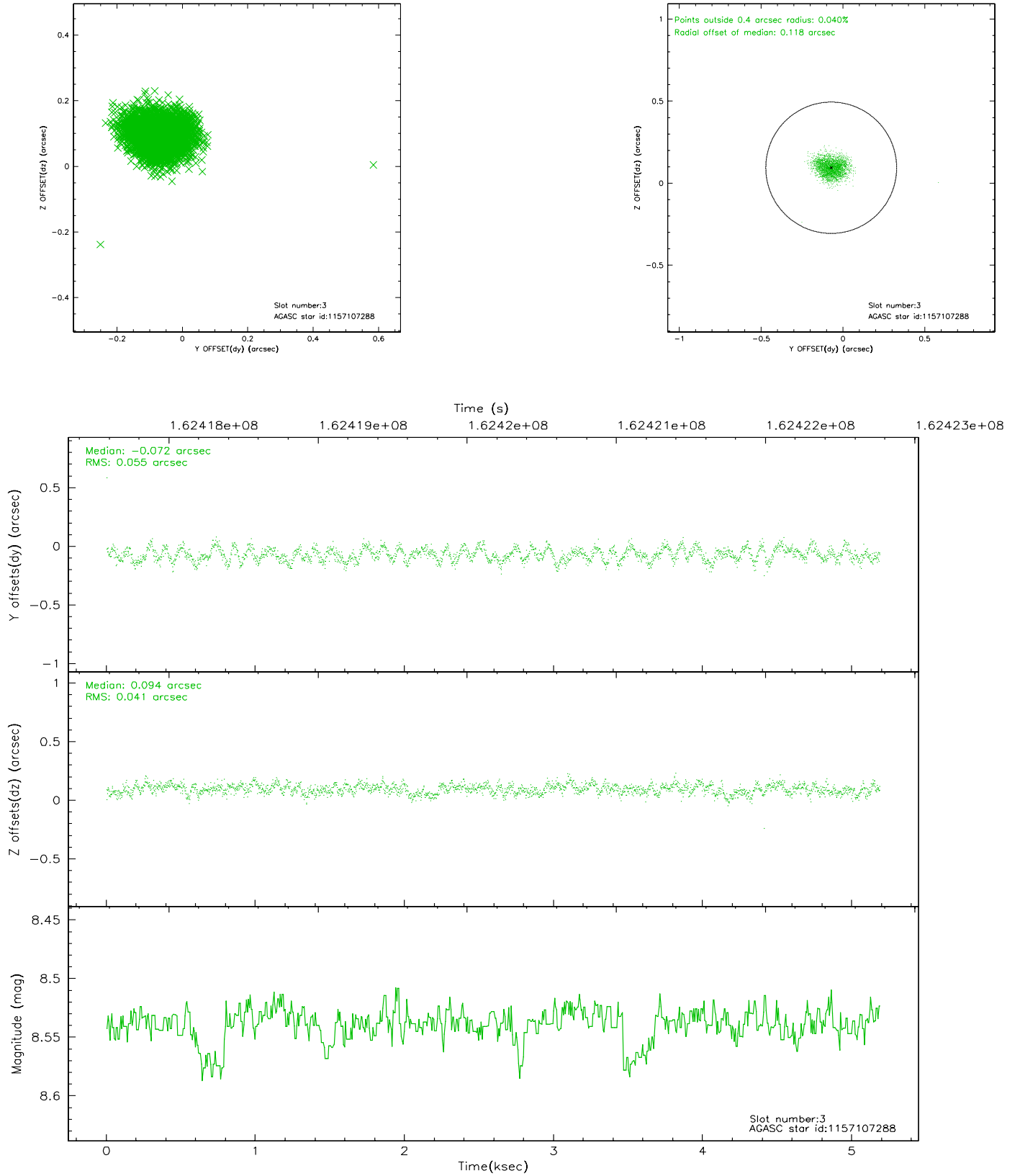
### Slot Statistics

slot	status	id	mag	n_pts	med_dy	med_dz	dr1	dr2	ra	dec	mean_y	mean_z
0	FID	ACIS-S-2	7.11	1266	-0.005	0.017	0.006	0.011	0.000000	0.000000	-755.32	-1728.84
1	FID	ACIS-S-4	7.20	1266	-0.057	-0.002	0.005	0.008	0.000000	0.000000	2157.39	178.41
2	FID	ACIS-S-5	7.24	1266	0.031	-0.006	0.006	0.011	0.000000	0.000000	-1806.61	173.42
3	GUIDE	1157107288	8.54	2531	-0.072	0.094	0.073	0.114	333.659459	-59.292192	1635.48	-1298.42
4	GUIDE	1157108528	8.63	2531	-0.020	0.118	0.066	0.104	333.520311	-59.494803	1846.40	-555.43
5	GUIDE	1194990528	9.25	2527	-0.159	-0.074	0.074	0.121	333.605757	-60.085376	1561.24	1557.36
6	GUIDE	1194995192	9.71	2530	0.243	-0.099	0.093	0.153	334.828298	-60.117765	-635.54	1561.50
7	GUIDE	1156187280	10.07	2450	0.007	-0.039	0.137	0.221	333.289722	-59.041074	2372.68	-2157.68

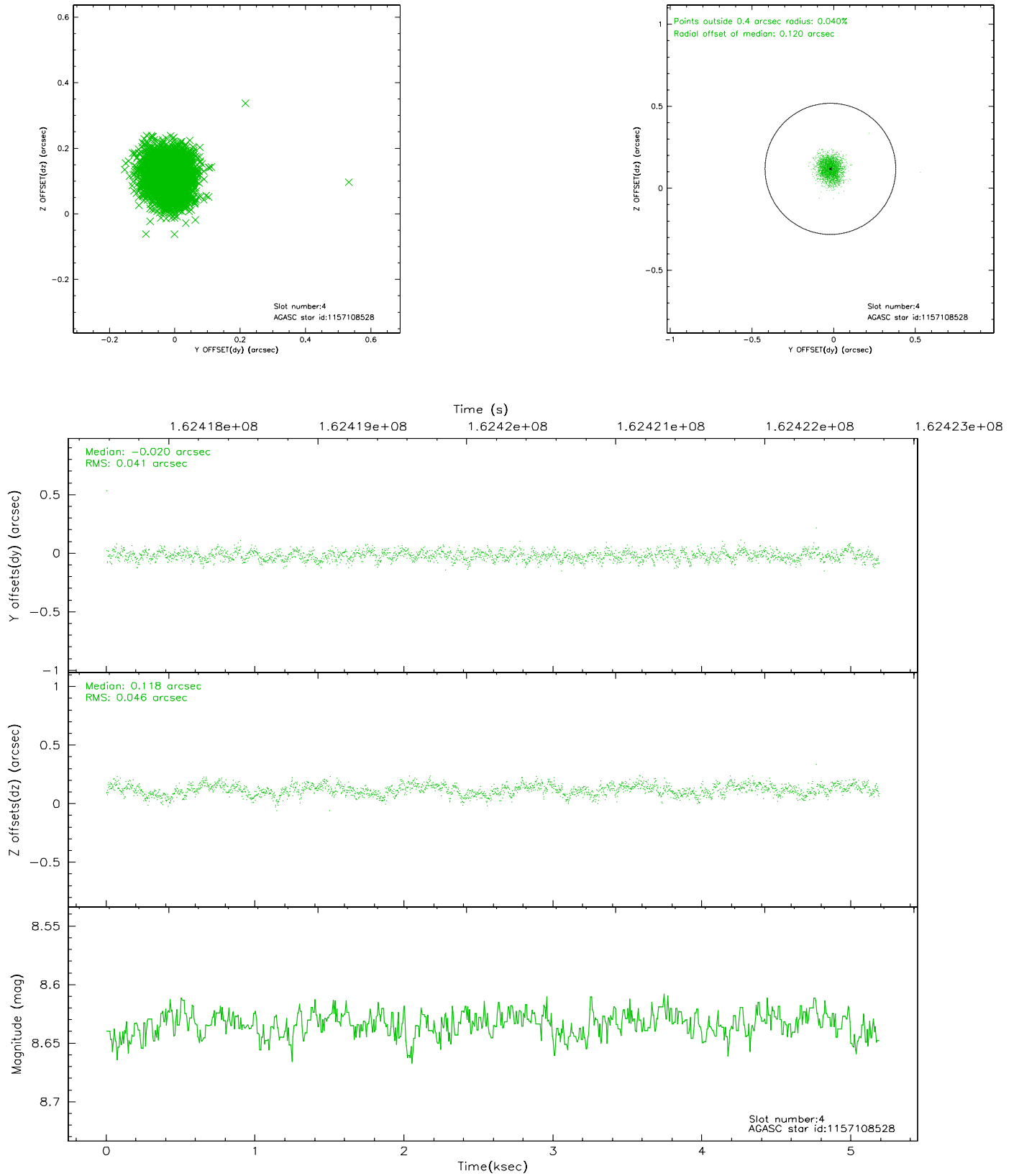


## 2.4 Star Slots

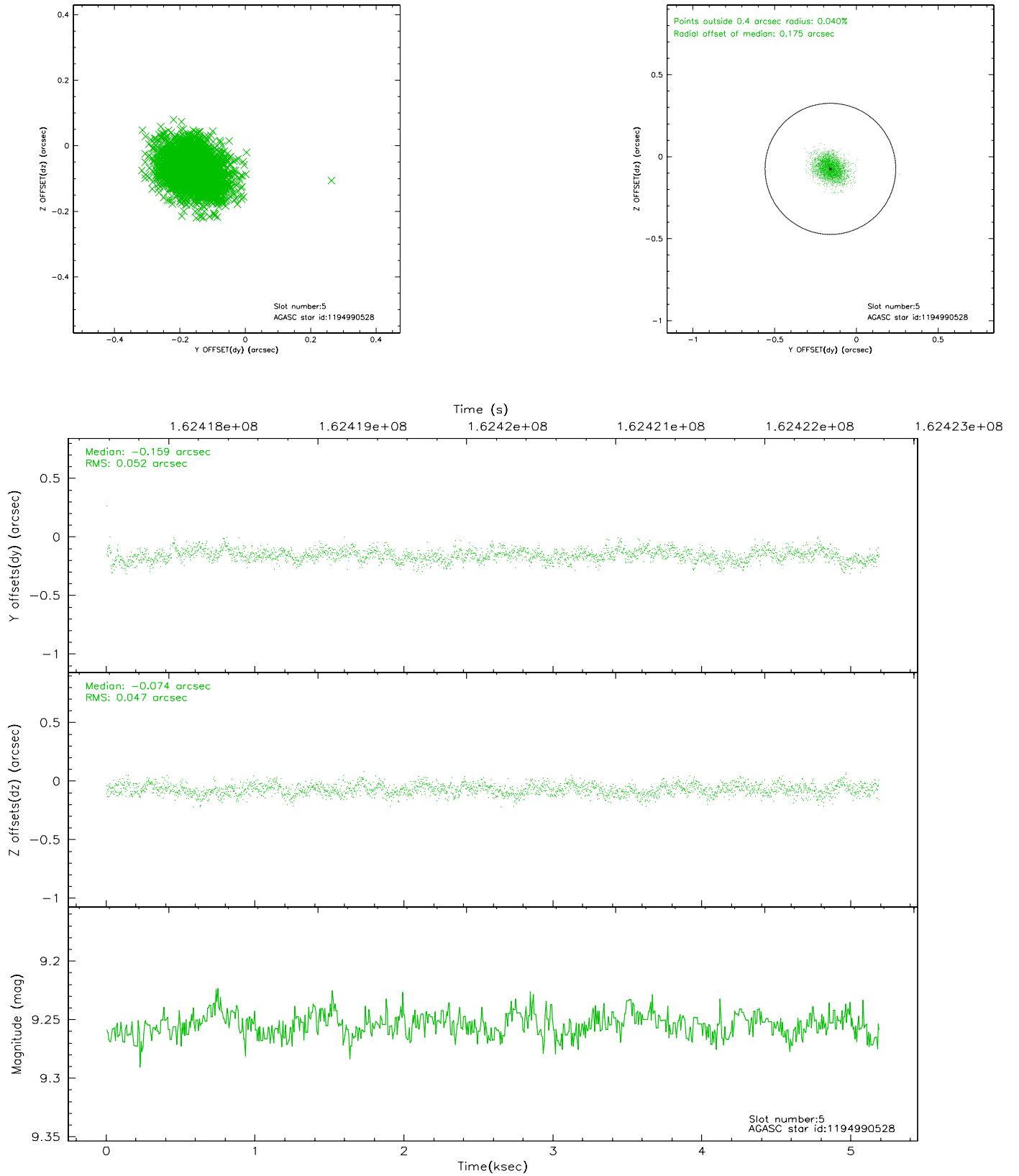
### 2.4.1 Slot 3



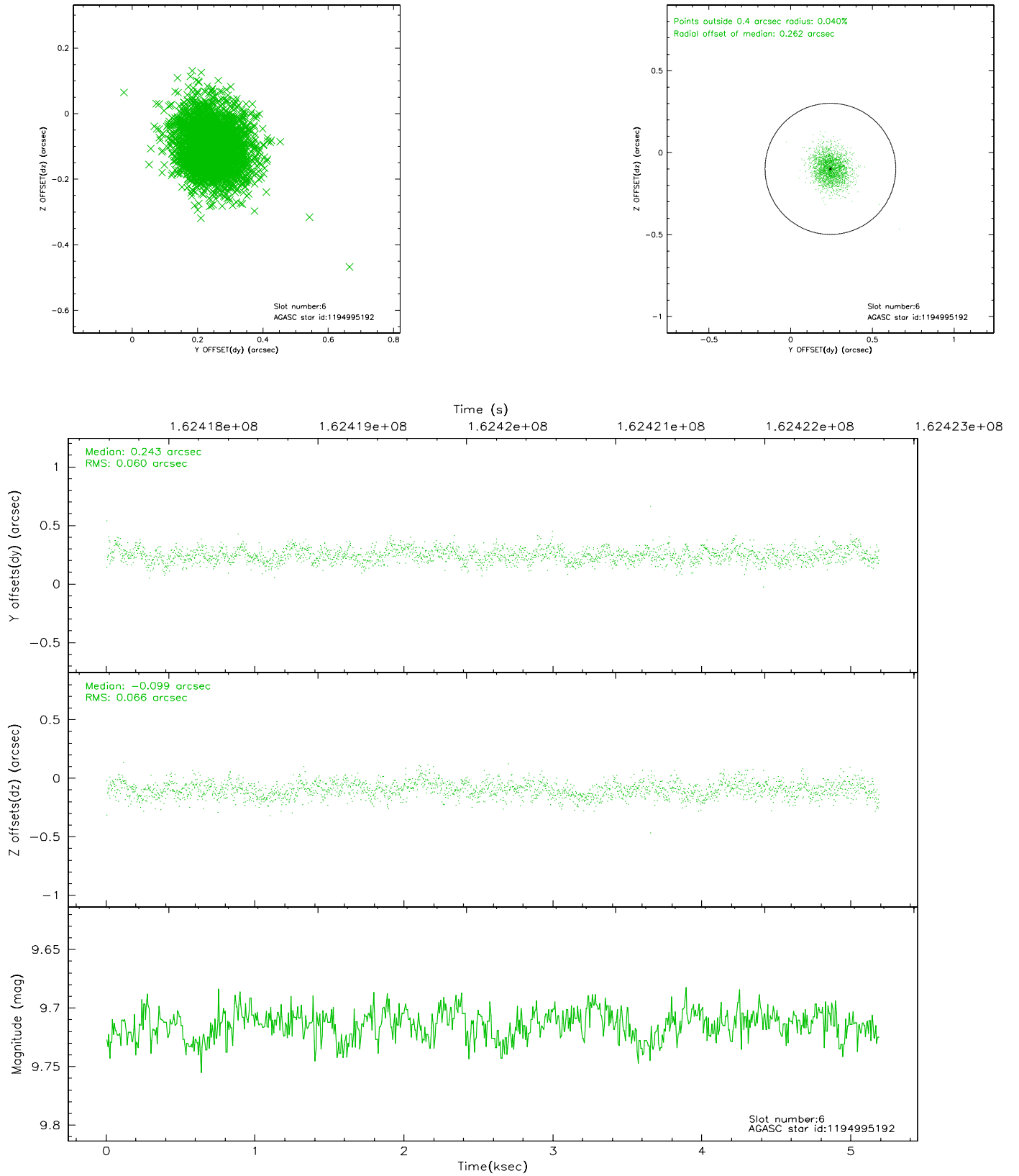
## 2.4.2 Slot 4



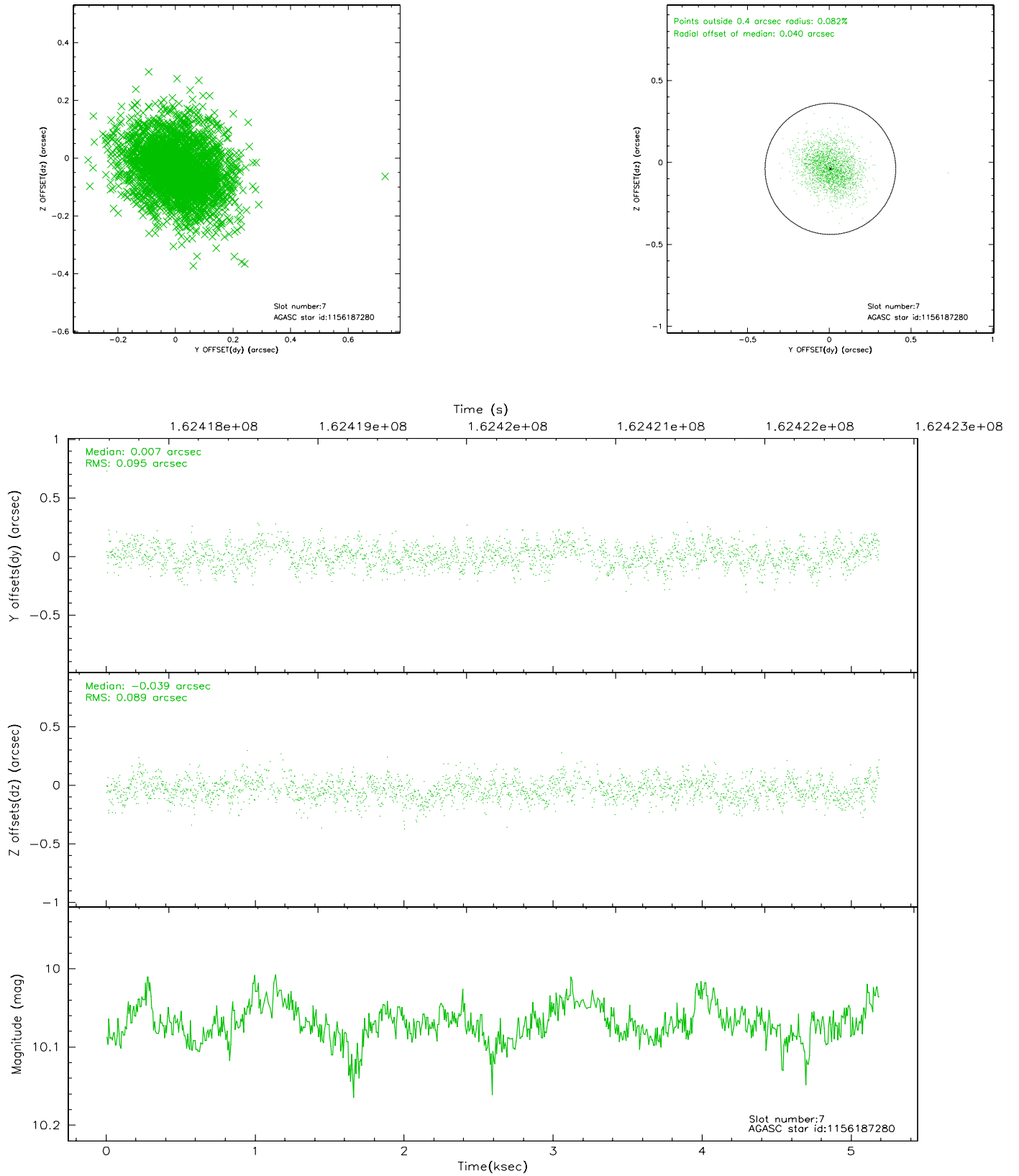
### 2.4.3 Slot 5



## 2.4.4 Slot 6

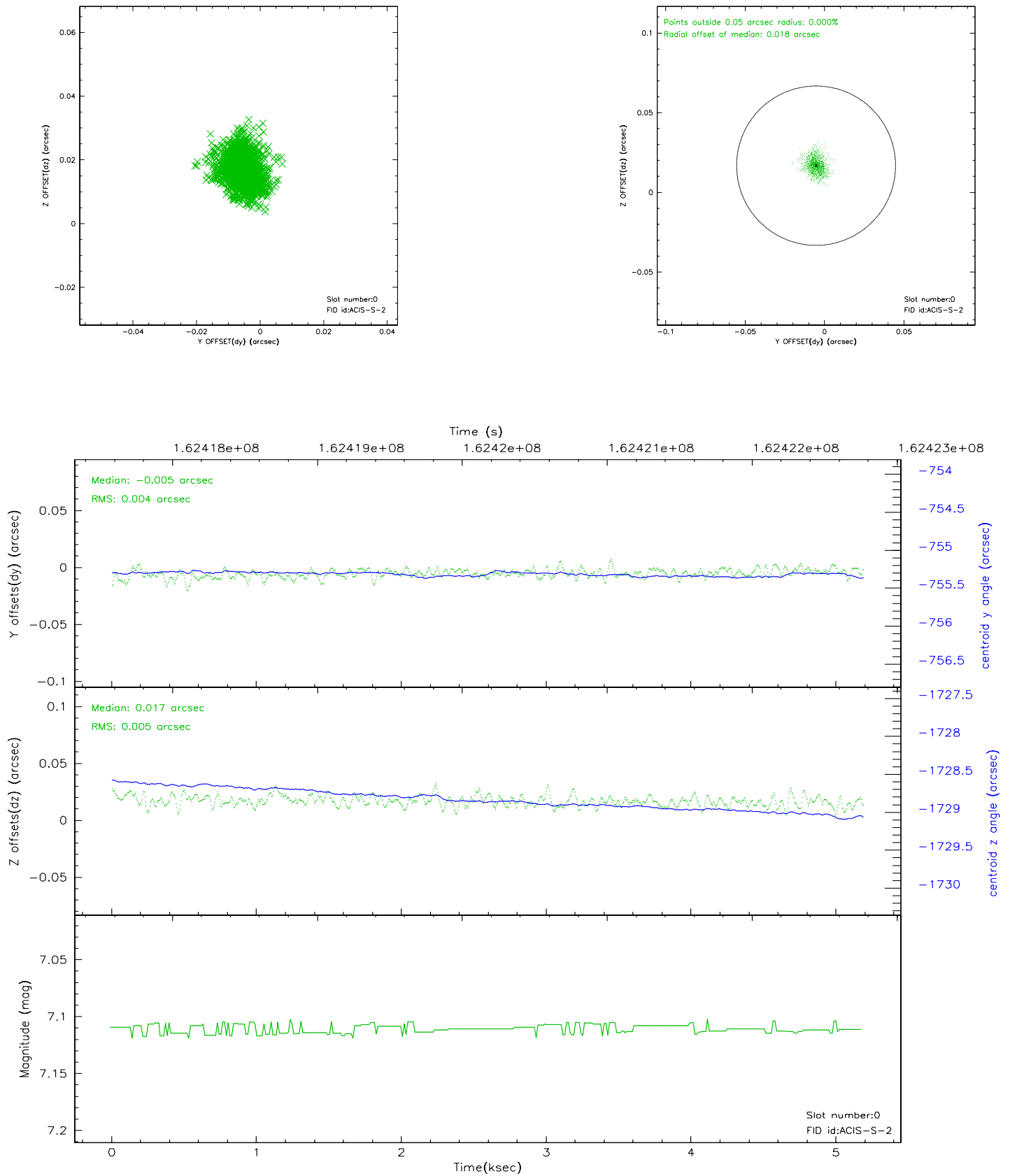


## 2.4.5 Slot 7

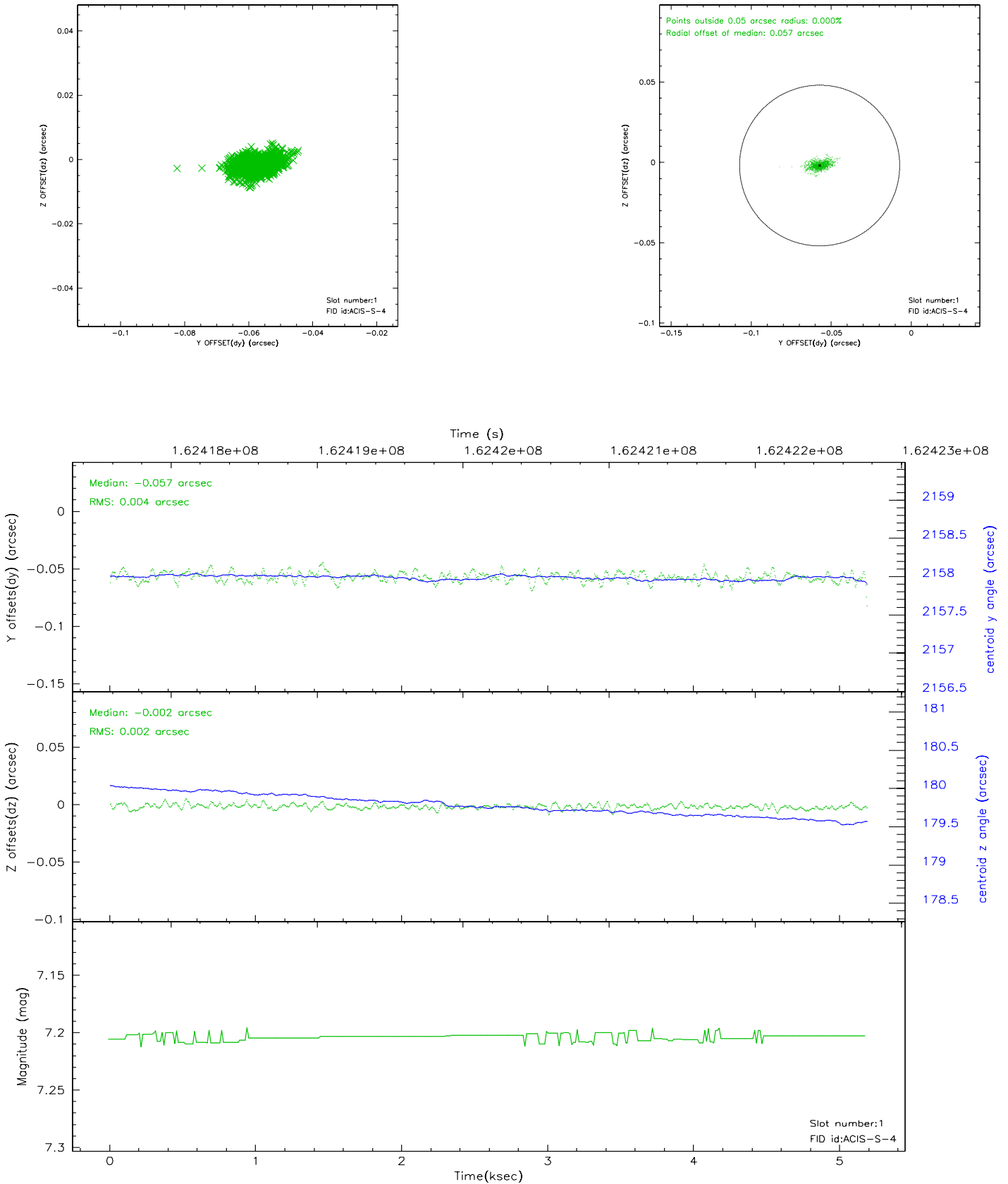


## 2.5 FID Slots

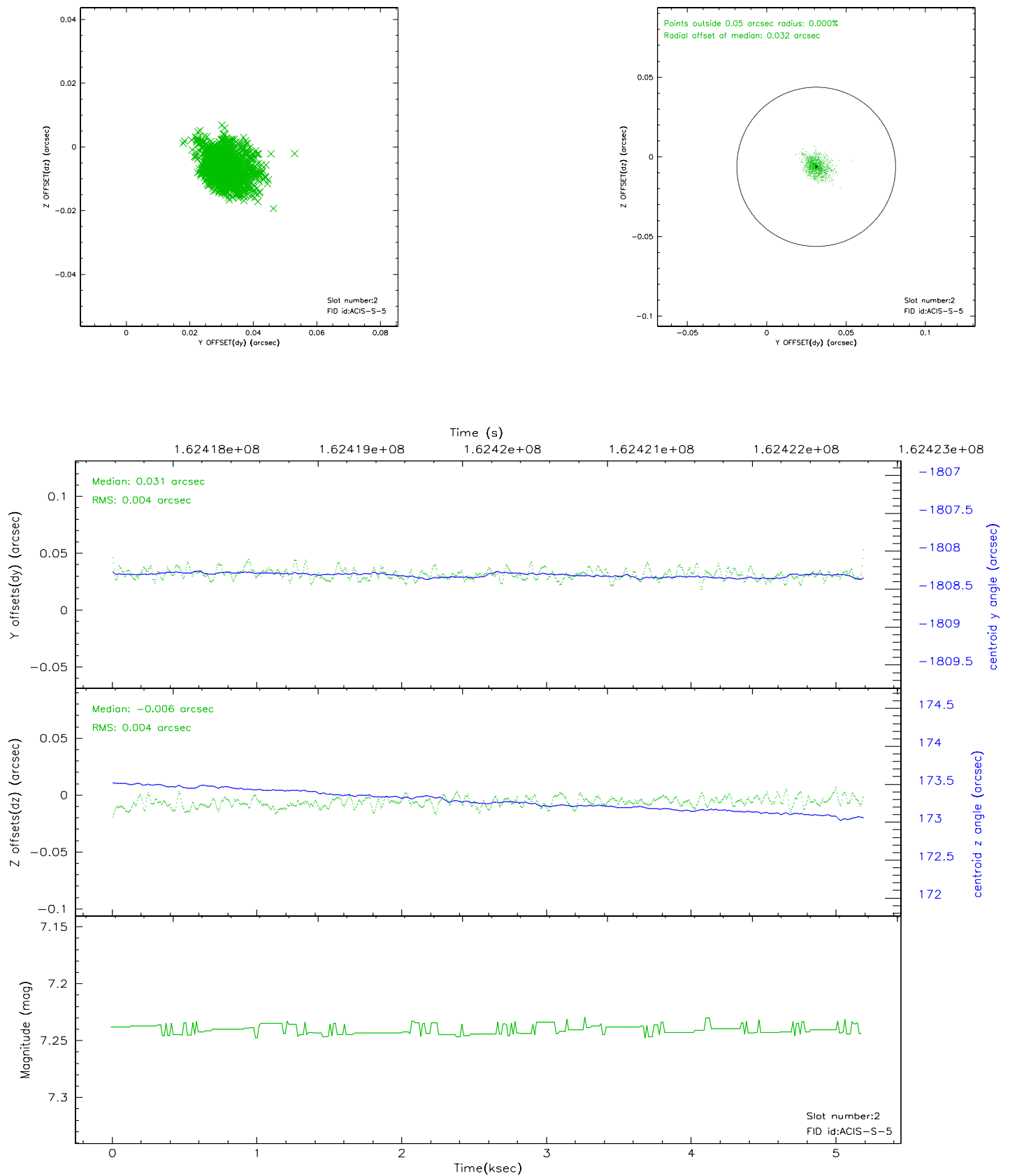
### 2.5.1 Slot 0



## 2.5.2 Slot 1

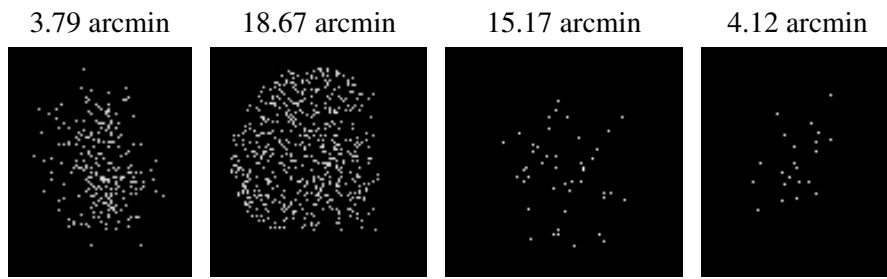


### 2.5.3 Slot 2





### 3 Point Sources



## A Summary

### A.1 Status

V&V Scientist	Jen Lauer
V&V Date (YYYY-MM-DD)	2006.07.28
V&V Edition	1
V&V Disposition and Status	OK
V&V Charge Time	4.755

### A.2 Comments