

# V&V Reference Report

## L2 ASCDS Version : 7.6.9

Observation 3554 - L2 Version 001  
Chandra X-Ray Center

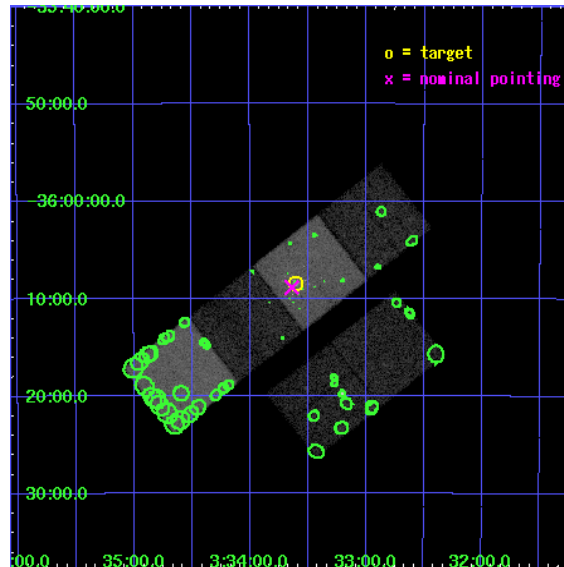
L2 Processing Date : Oct 15 2006

## Contents

<b>1</b>	<b>Front</b>	<b>2</b>
<b>2</b>	<b>OBI</b>	<b>3</b>
2.1	OBI . . . . .	3
2.1.1	Images . . . . .	3
2.1.2	Bias . . . . .	3
2.1.3	Parameters . . . . .	4
2.1.4	Events . . . . .	4
2.2	Compared Parameters . . . . .	5
2.3	Aspect . . . . .	6
2.4	Star Slots . . . . .	9
2.4.1	Slot 3 . . . . .	9
2.4.2	Slot 4 . . . . .	10
2.4.3	Slot 5 . . . . .	11
2.4.4	Slot 6 . . . . .	12
2.4.5	Slot 7 . . . . .	13
2.5	FID Slots . . . . .	14
2.5.1	Slot 0 . . . . .	14
2.5.2	Slot 1 . . . . .	15
2.5.3	Slot 2 . . . . .	16
<b>3</b>	<b>Point Sources</b>	<b>17</b>
<b>A</b>	<b>Summary</b>	<b>18</b>
A.1	Status . . . . .	18
A.2	Comments . . . . .	18

# 1 Front

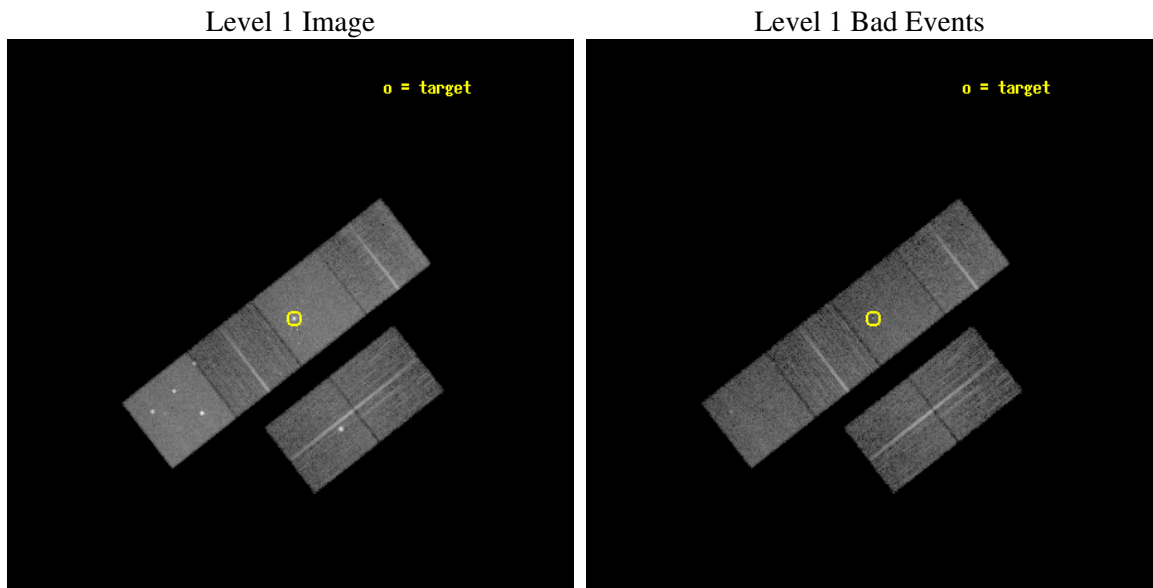
seq_num	700616
obs_id	3554
title	SOLVING THE ENIGMAS OF THE NEARBY SEYFERT/STARBURST GALAXY NCG1365 WITH CHANDRA ACIS-S
observer	Dr. Peter Predehl
object	NGC 1365
dtcycle	0
cycle	P
ra_targ	53.401667
dec_targ	-36.140278
ra_nom	53.409638406126
dec_nom	-36.147430020537
roll_nom	321.93528179745
revision	2
ontime	14796.799944878
livetime	14609.433954412
ontime2	14793.558974594
ontime3	14796.799944878
ontime5	14796.799944878
ontime6	14796.799944878
ontime7	14796.799944878
ontime8	14793.559004515
l2events	160903



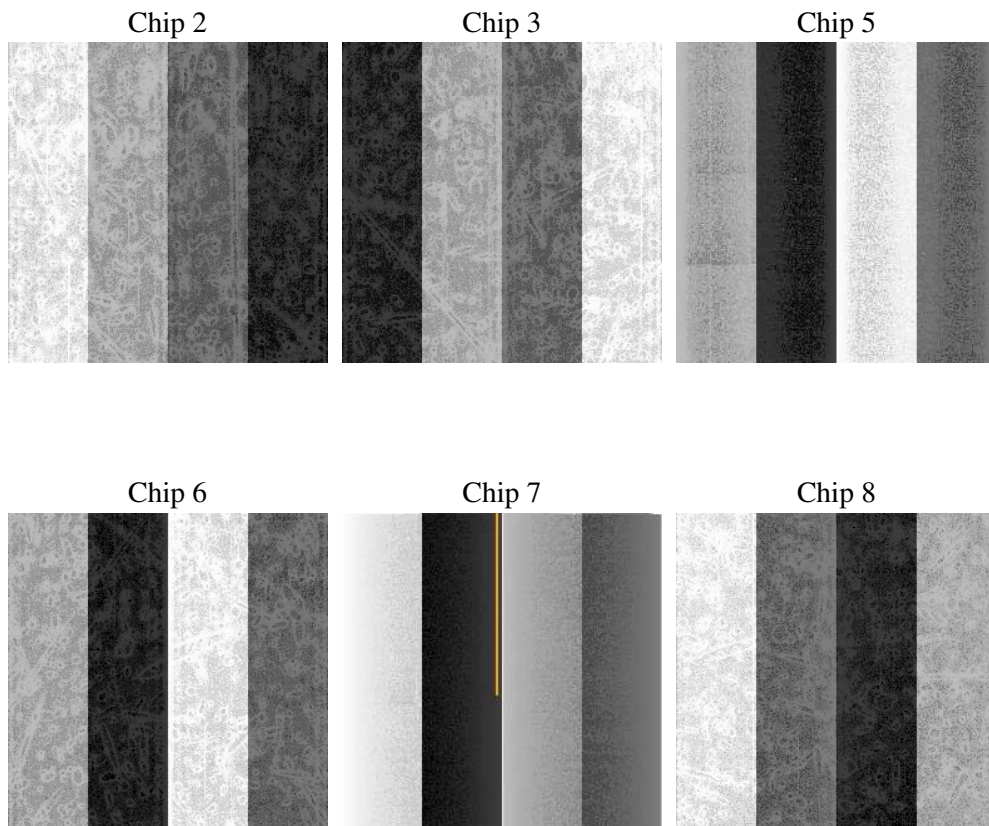
## 2 OBI

### 2.1 OBI

#### 2.1.1 Images



#### 2.1.2 Bias



### 2.1.3 Parameters

obi_num	0
ascdsver	7.6.9
caldbver	3.2.3
date	2006-10-16T01:28:33
revision	2

sched_exp_time	15000.000000
ontime	14801.65248841
ontime2	14798.411518127
ontime3	14801.652468503
ontime5	14801.65248841
ontime6	14801.65248841
ontime7	14801.65248841
ontime8	14798.411548048
l1events	641690

### 2.1.4 Events

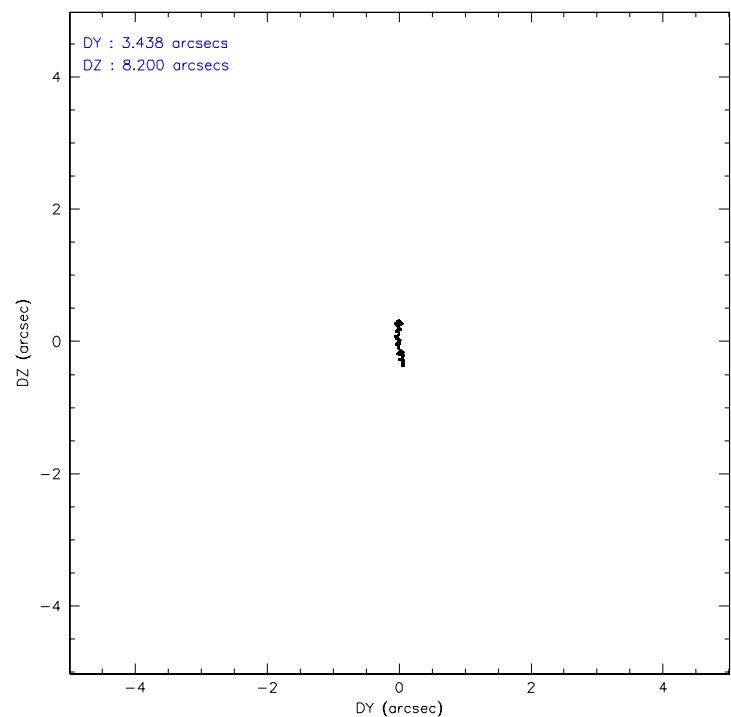
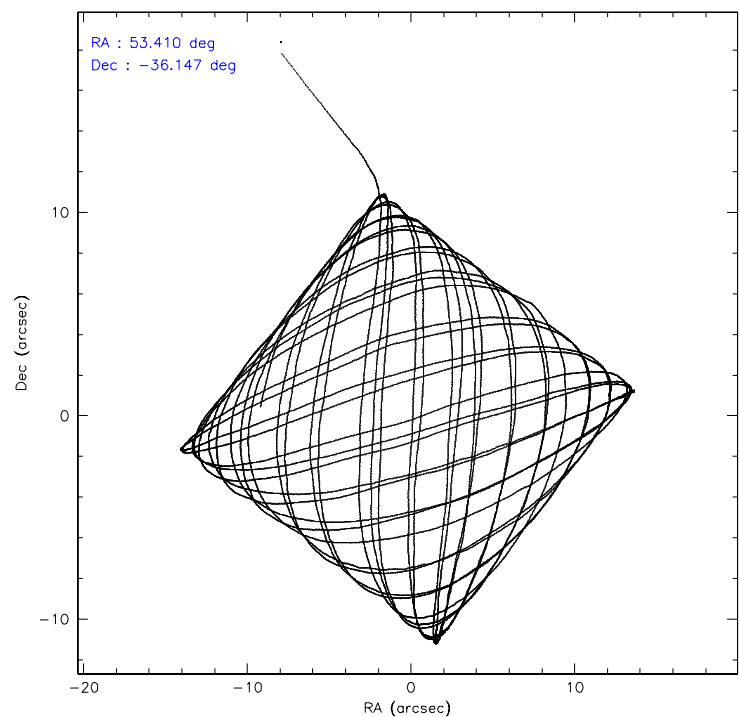
	ccd 2	ccd 3	ccd 5	ccd 6	ccd 7	ccd 8
level 1 events	90127	84191	141169	87329	129718	109156
rejected events	76214	73430	72187	75528	71470	85240
rejected %	84%	87%	51%	86%	55%	78%

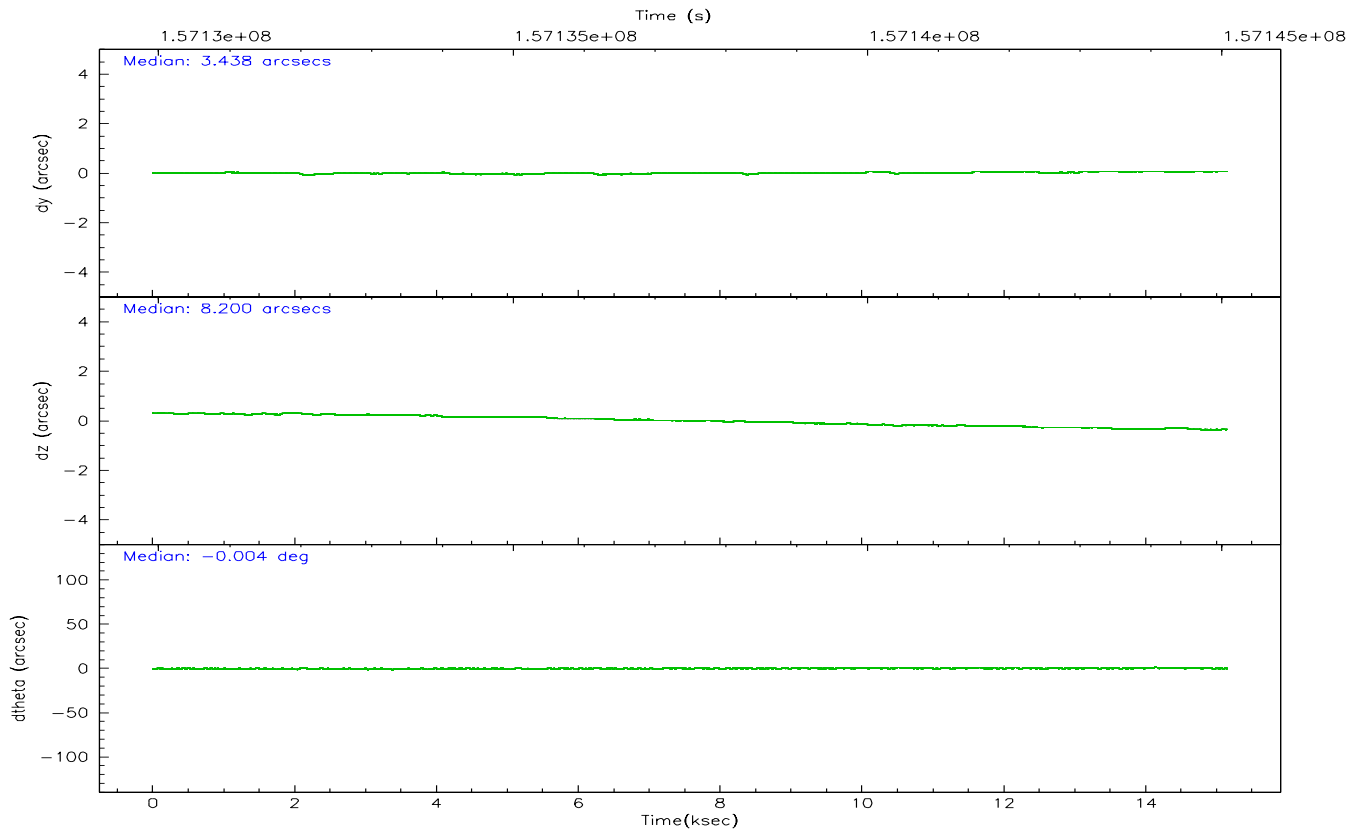
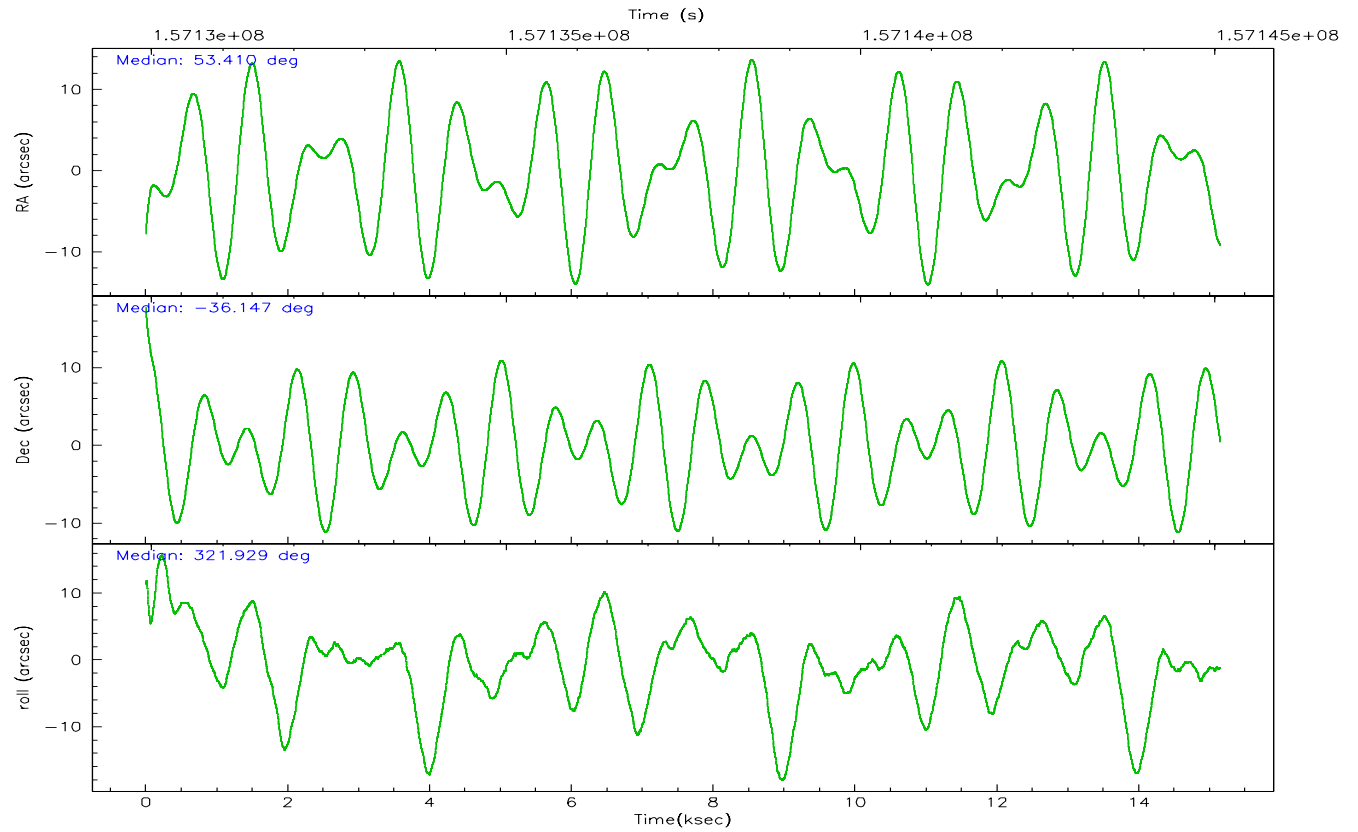
	ccd 2	ccd 3	ccd 5	ccd 6	ccd 7	ccd 8
grade 0 events	7677	5004	10570	5228	5537	8476
	8%	5%	7%	5%	4%	7%
grade 1 events	58	51	163	54	48	84
	0%	0%	0%	0%	0%	0%
grade 2 events	2381	2038	20075	2437	14146	4873
	2%	2%	14%	2%	10%	4%
grade 3 events	1012	972	1611	1035	3448	2451
	1%	1%	1%	1%	2%	2%
grade 4 events	1038	1001	1630	1065	3465	2426
	1%	1%	1%	1%	2%	2%
grade 5 events	3372	3633	6222	3903	7864	5076
	3%	4%	4%	4%	6%	4%
grade 6 events	1808	1750	35117	2038	31667	5692
	2%	2%	24%	2%	24%	5%
grade 7 events	72781	69742	65781	71569	63543	80078
	80%	82%	46%	81%	48%	73%

## 2.2 Compared Parameters

Parameter	Planned	Actual	Parameter	Planned	Actual
Instrument	ACIS	ACIS	Obspar format version number	6	6
Detector	ACIS-235678	ACIS-235678	Obspar file type	PREDICTED	ACTUAL
Grating	NONE	NONE	Obspar update status	NONE	UPDATED
Data mode	FAINT	FAINT	Number of optional ACIS chips dropped	0	0
Observation mode	POINTING	POINTING	On-chip summing requested	N	N
Pointing RA	53.376210	53.40963840612608	Subarray requested	NONE	NONE
Pointing Dec	-36.144027	-36.14743002053734	Alternating exposures requested	N	N
Pointing Roll	321.758934	321.9352817974537	Primary exposure time	0.000000	3.2
SIM focus pos (mm)	-0.684267	-0.6828225247311905			
SIM defocus (mm)	0	0.001444936568705701			
SIM translation stage pos (mm)	-190.132523	-190.1400660498719			
SIM translation stage offset (mm)	0	0.00754346686406393			
Observation start time	157130071.184000	157129060.75315			
Observation start date	2002-12-24T15:13:27	2002-12-24T14:57:40			
Observation end time	157145071.184000	157145663.70385			
Observation end date	2002-12-24T19:23:27	2002-12-24T19:34:23			
Read mode	TIMED	TIMED			

2.3 Aspect





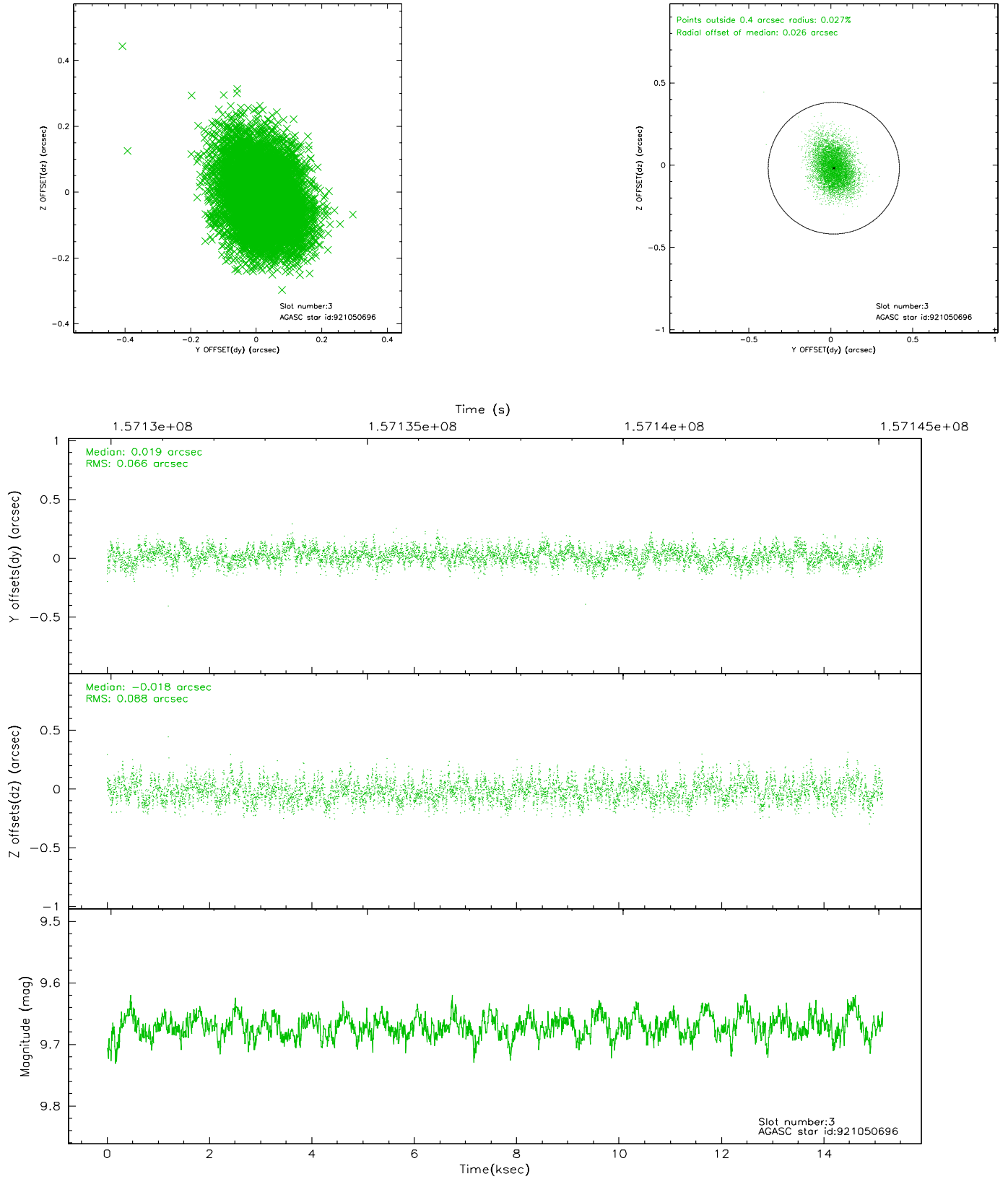
### Slot Statistics

slot	status	id	mag	n_pts	med_dy	med_dz	dr1	dr2	ra	dec	mean_y	mean_z
0	FID	ACIS-S-2	7.11	3694	0.007	0.025	0.007	0.011	0.000000	0.000000	-756.10	-1729.36
1	FID	ACIS-S-4	7.20	3692	-0.050	-0.010	0.005	0.009	0.000000	0.000000	2157.00	178.75
2	FID	ACIS-S-5	7.24	3693	0.012	-0.006	0.007	0.011	0.000000	0.000000	-1808.54	172.80
3	GUIDE	921050696	9.67	7383	0.019	-0.018	0.116	0.190	52.859413	-36.623296	-101.62	-2282.69
4	GUIDE	921970016	9.41	7383	0.044	0.004	0.098	0.159	54.228536	-36.081558	1815.92	1703.21
5	GUIDE	921051744	9.87	7366	-0.047	-0.008	0.120	0.202	52.780334	-36.203991	-1221.83	-1245.19
6	GUIDE	921048648	9.05	7386	-0.008	-0.003	0.112	0.174	53.884610	-35.870023	556.74	1689.61
7	GUIDE	921967072	7.69	7388	-0.003	0.024	0.054	0.096	54.269247	-36.292226	2373.21	1175.91

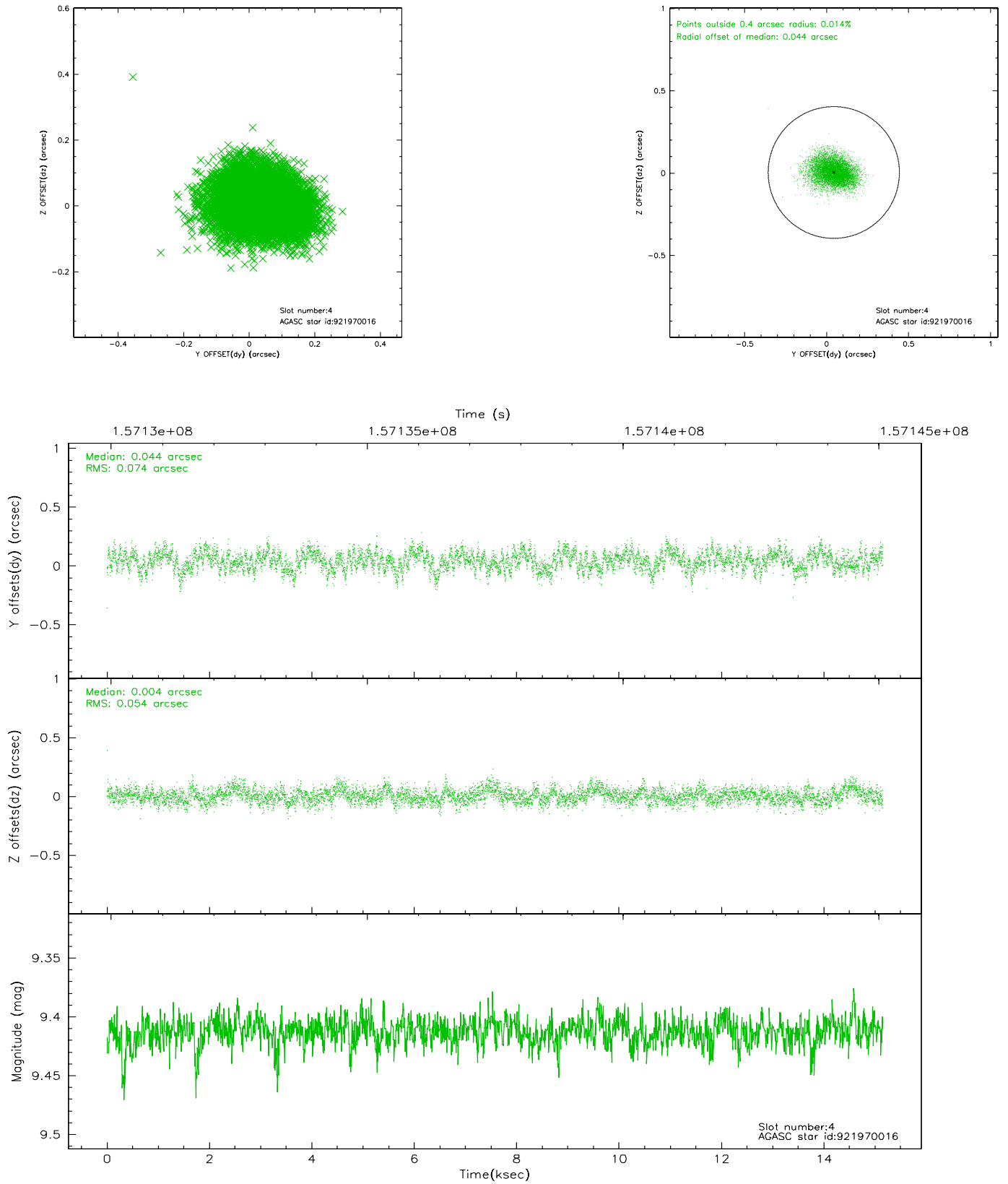


## 2.4 Star Slots

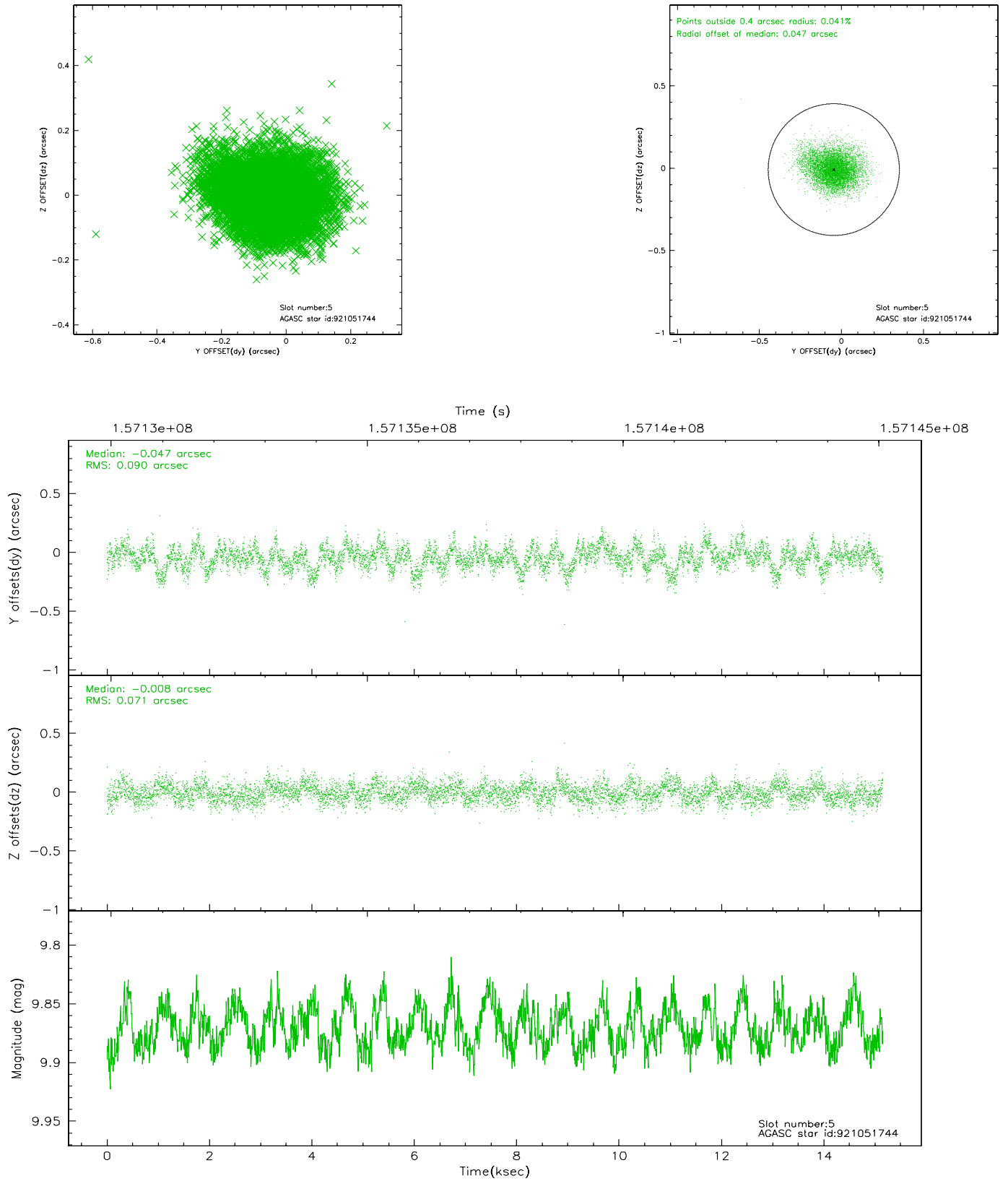
### 2.4.1 Slot 3



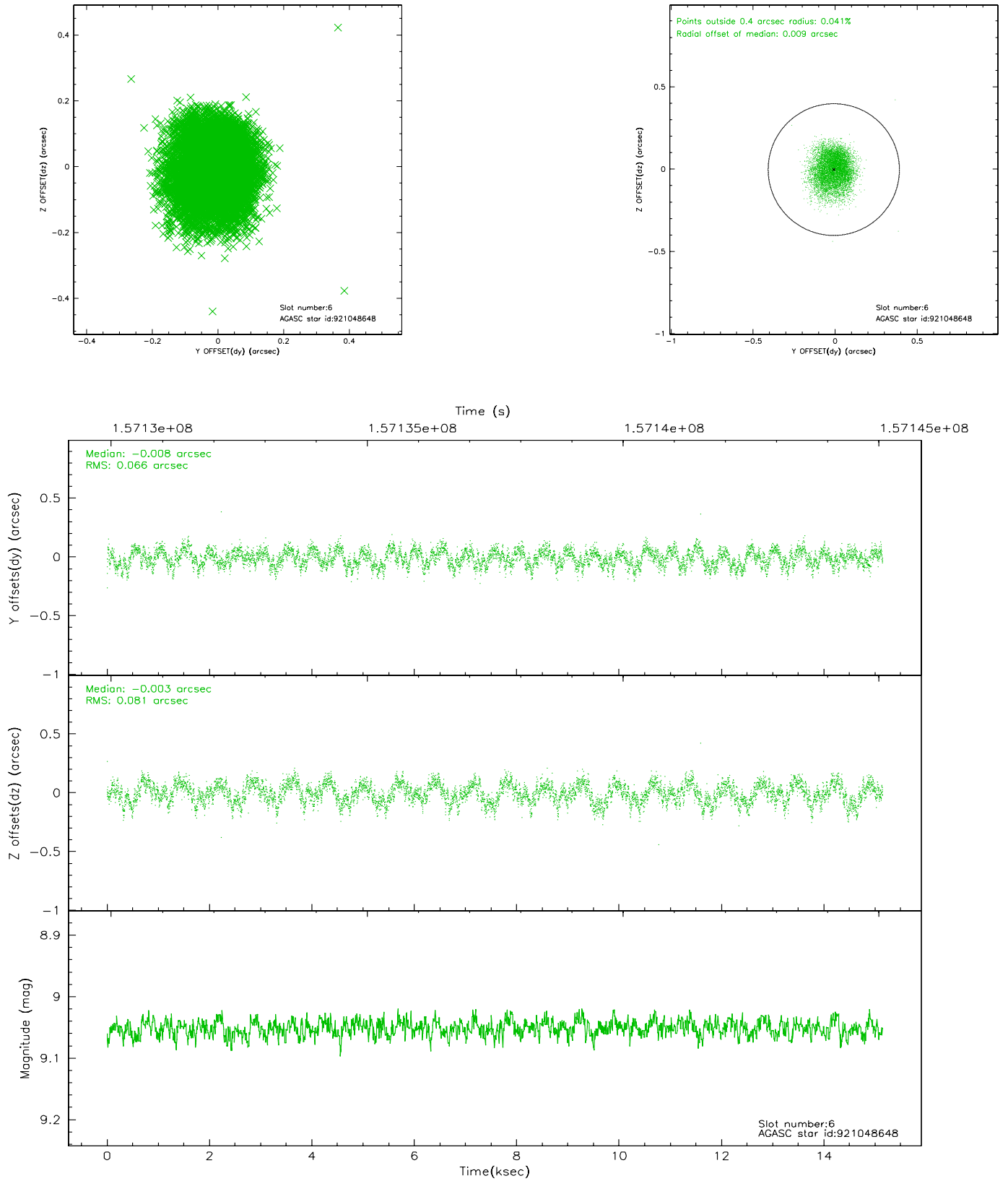
## 2.4.2 Slot 4



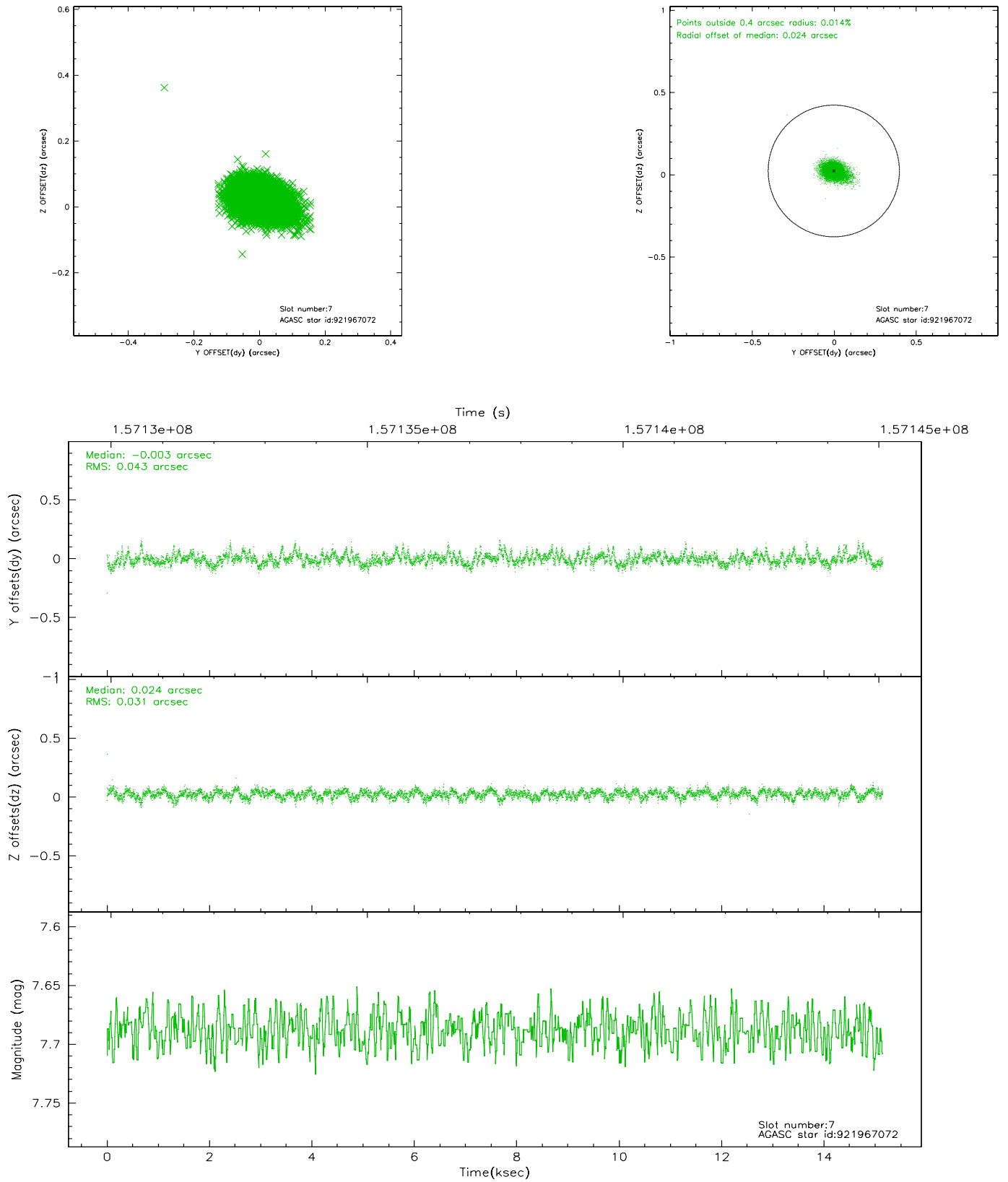
### 2.4.3 Slot 5



## 2.4.4 Slot 6

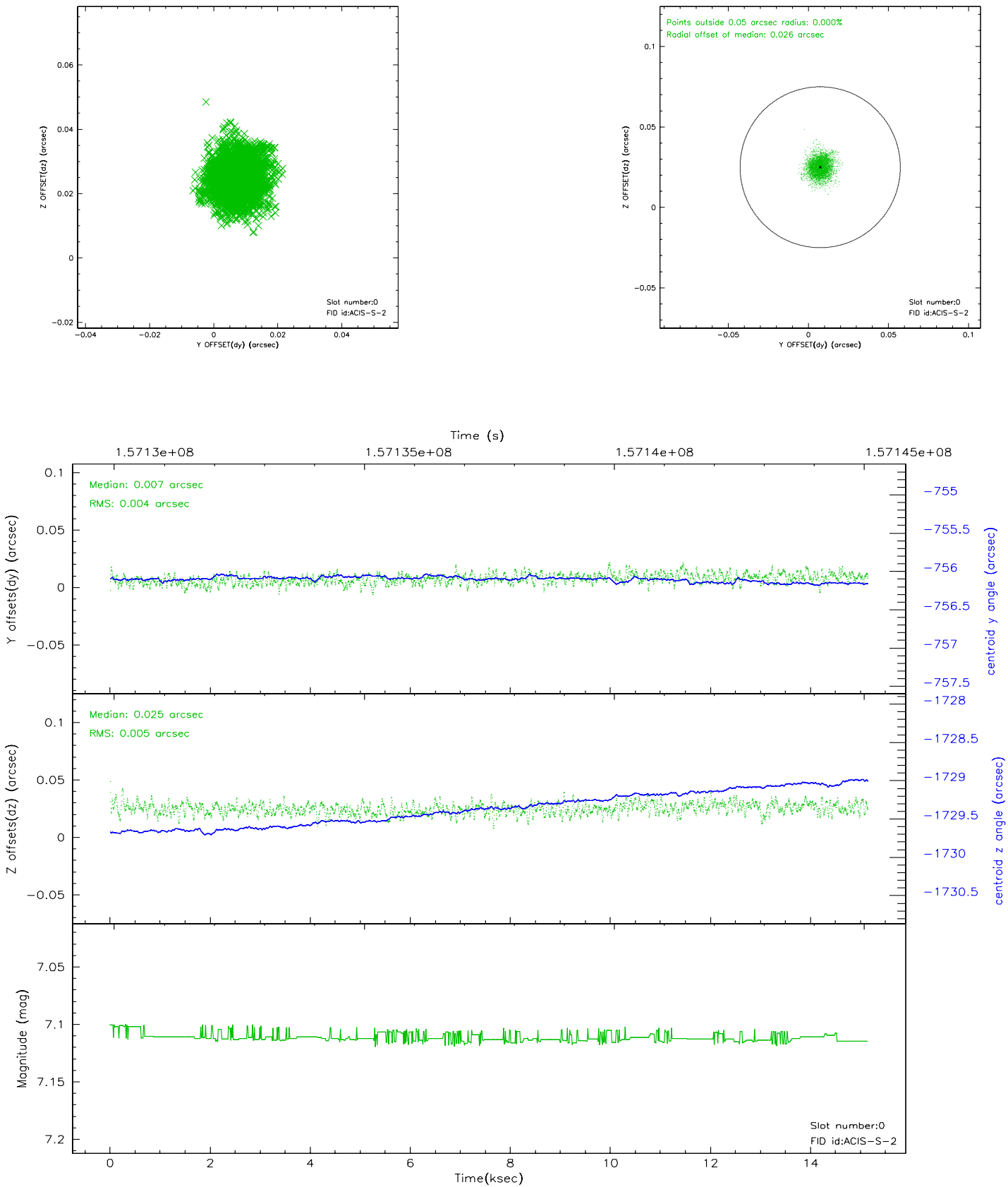


## 2.4.5 Slot 7

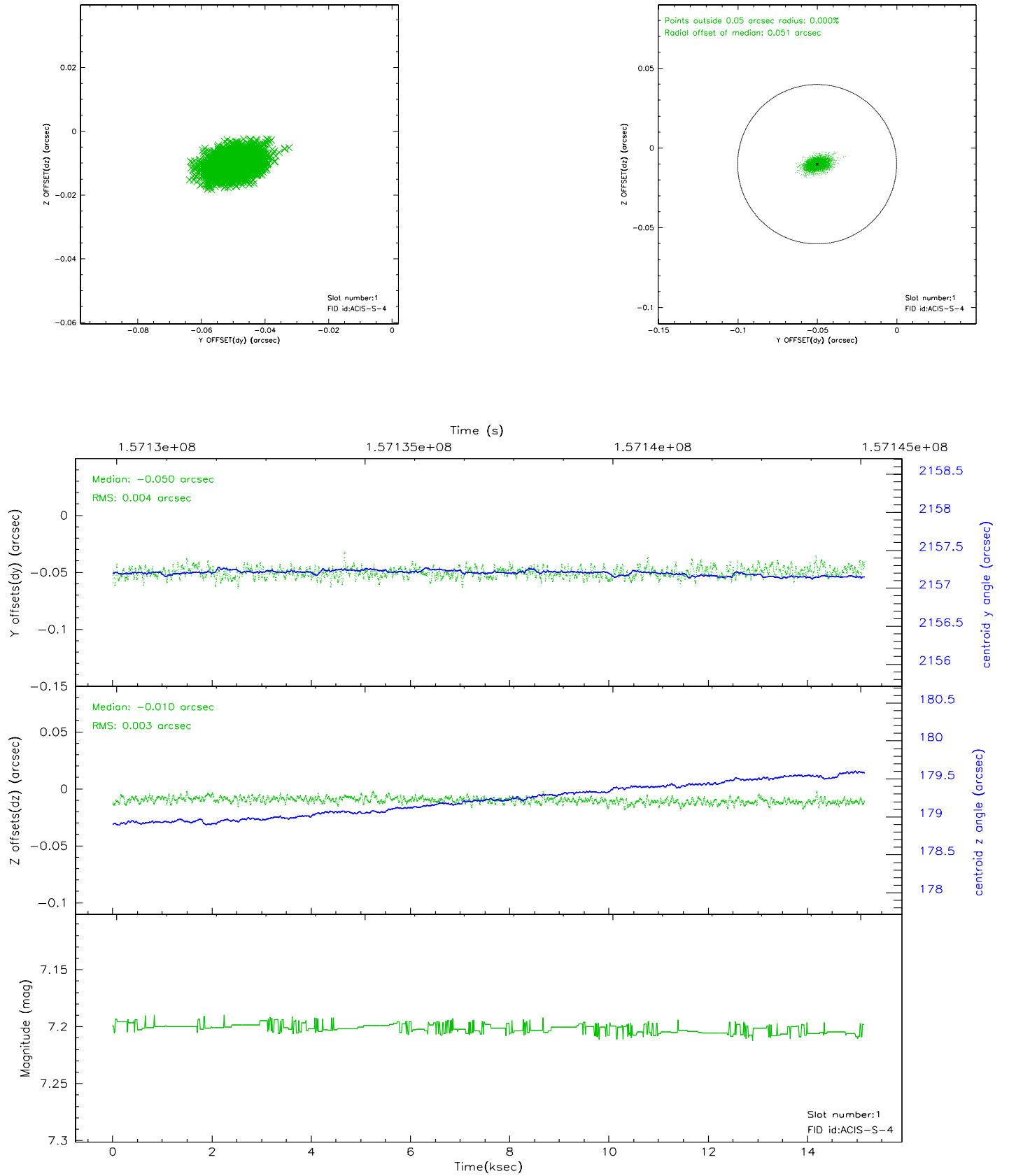


## 2.5 FID Slots

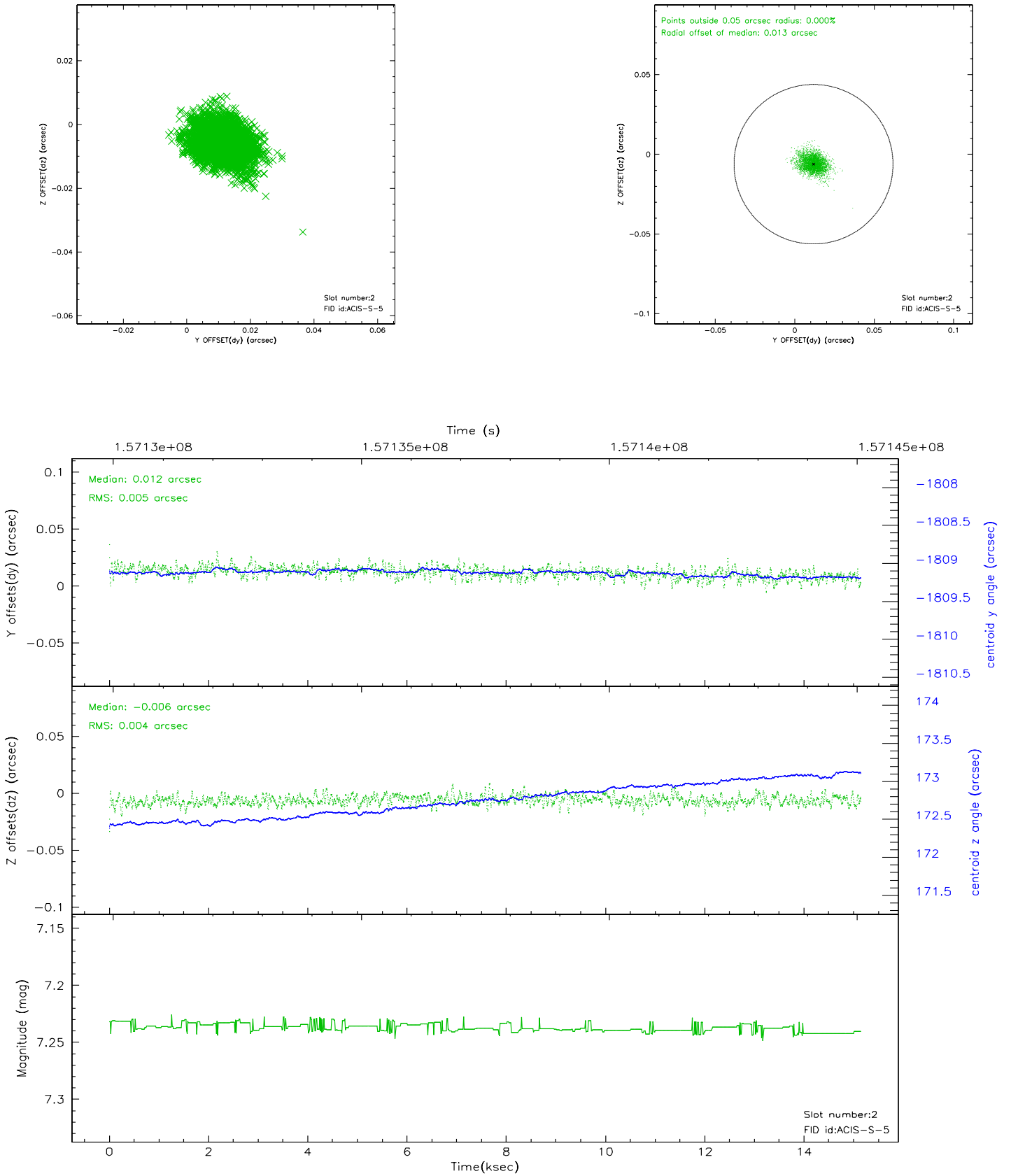
### 2.5.1 Slot 0



## 2.5.2 Slot 1

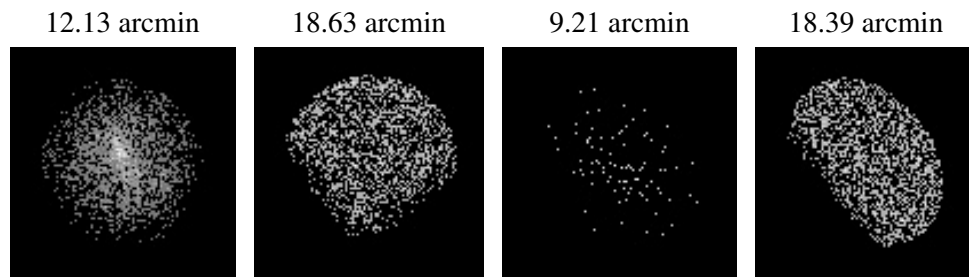


### 2.5.3 Slot 2





### 3 Point Sources



## A Summary

### A.1 Status

V&V Scientist	Jen Lauer
V&V Date (YYYY-MM-DD)	2006.10.16
V&V Edition	1
V&V Disposition and Status	OK
V&V Charge Time	14.799

### A.2 Comments