

V&V Reference Report

L2 ASCDS Version : 7.6.8

Observation 3934 - L2 Version 001
Chandra X-Ray Center

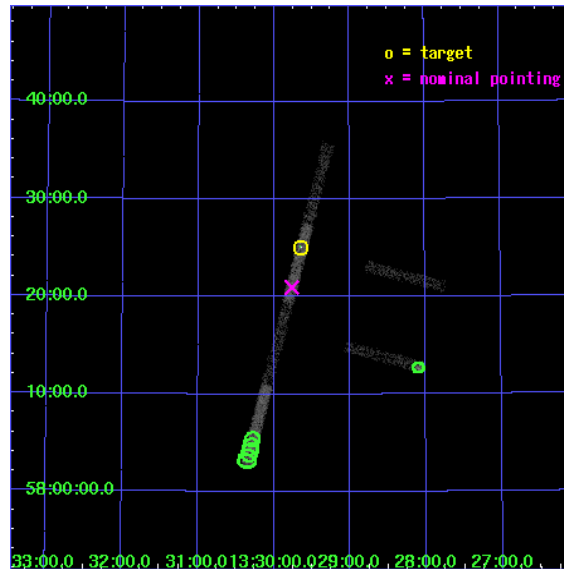
L2 Processing Date : Jul 10 2006

Contents

1	Front	2
2	OBI	3
2.1	OBI	3
2.1.1	Images	3
2.1.2	Bias	3
2.1.3	Parameters	4
2.1.4	Events	4
2.2	Compared Parameters	5
2.3	Aspect	6
2.4	Star Slots	9
2.4.1	Slot 3	9
2.4.2	Slot 4	10
2.4.3	Slot 5	11
2.4.4	Slot 6	12
2.4.5	Slot 7	13
2.5	FID Slots	14
2.5.1	Slot 0	14
2.5.2	Slot 1	15
2.5.3	Slot 2	16
3	Point Sources	17
A	Summary	18
A.1	Status	18
A.2	Comments	18

1 Front

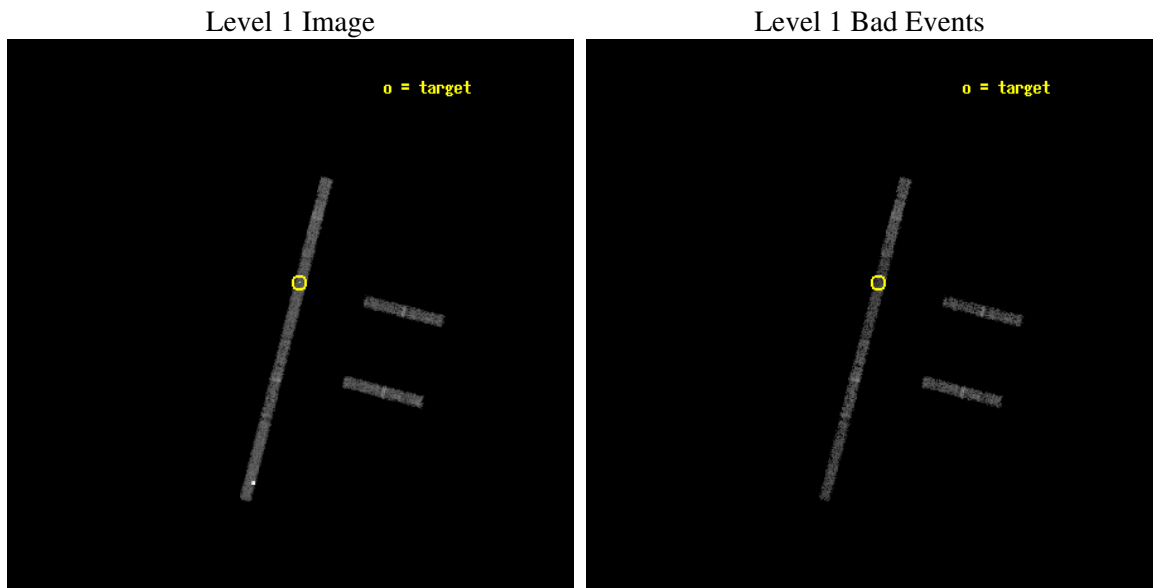
seq_num	600308
obs_id	3934
title	PROBING THE SPECTRAL VARIABILITY OF THE ULTRALUMINOUS X-RAY SOURCE NGC 5204 X-1
observer	Dr Timothy Roberts
object	NGC 5204 X-1
dtcycle	0
cycle	P
ra_targ	202.410833
dec_targ	58.418333
ra_nom	202.4411345868
dec_nom	58.349431859421
roll_nom	284.45197476748
revision	2
ontime	5015.4999145865
livetime	4737.7333750008
ontime2	5015.4999145865
ontime3	5015.4999145865
ontime5	5015.4999145865
ontime6	5015.4999145865
ontime7	5015.4999145865
ontime8	5015.4999145865
l2events	7636



2 OBI

2.1 OBI

2.1.1 Images



2.1.2 Bias

Chip 2

Chip 3

Chip 5



Chip 6

Chip 7

Chip 8



2.1.3 Parameters

obi_num	0
ascdsver	7.6.8
caldsver	3.2.2
date	2006-07-11T02:24:23
revision	2

sched_exp_time	4863.599000
ontime	6063.1159990728
ontime2	6063.1159990728
ontime3	6063.1159990728
ontime5	6063.1159990728
ontime6	6063.1159990728
ontime7	6063.1159990728
ontime8	6063.1159990728
l1events	51738

2.1.4 Events

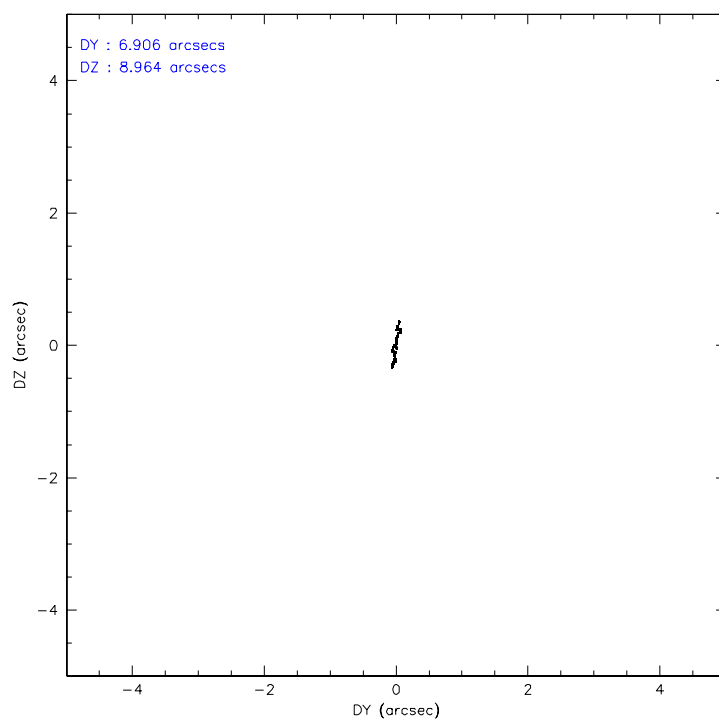
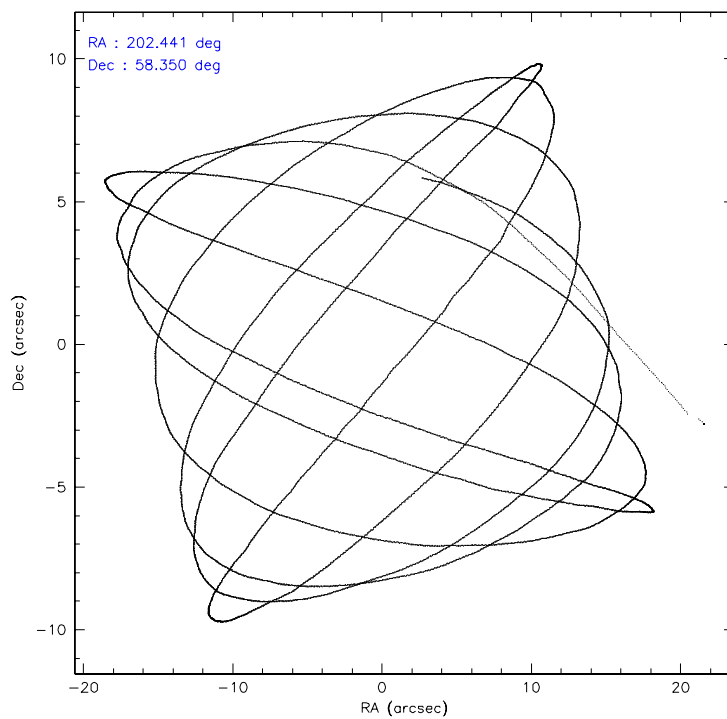
	ccd 2	ccd 3	ccd 5	ccd 6	ccd 7	ccd 8
level 1 events	6856	5850	15600	6796	7759	8877
rejected events	6108	5297	6232	6164	4775	7443
rejected %	89%	90%	39%	90%	61%	83%

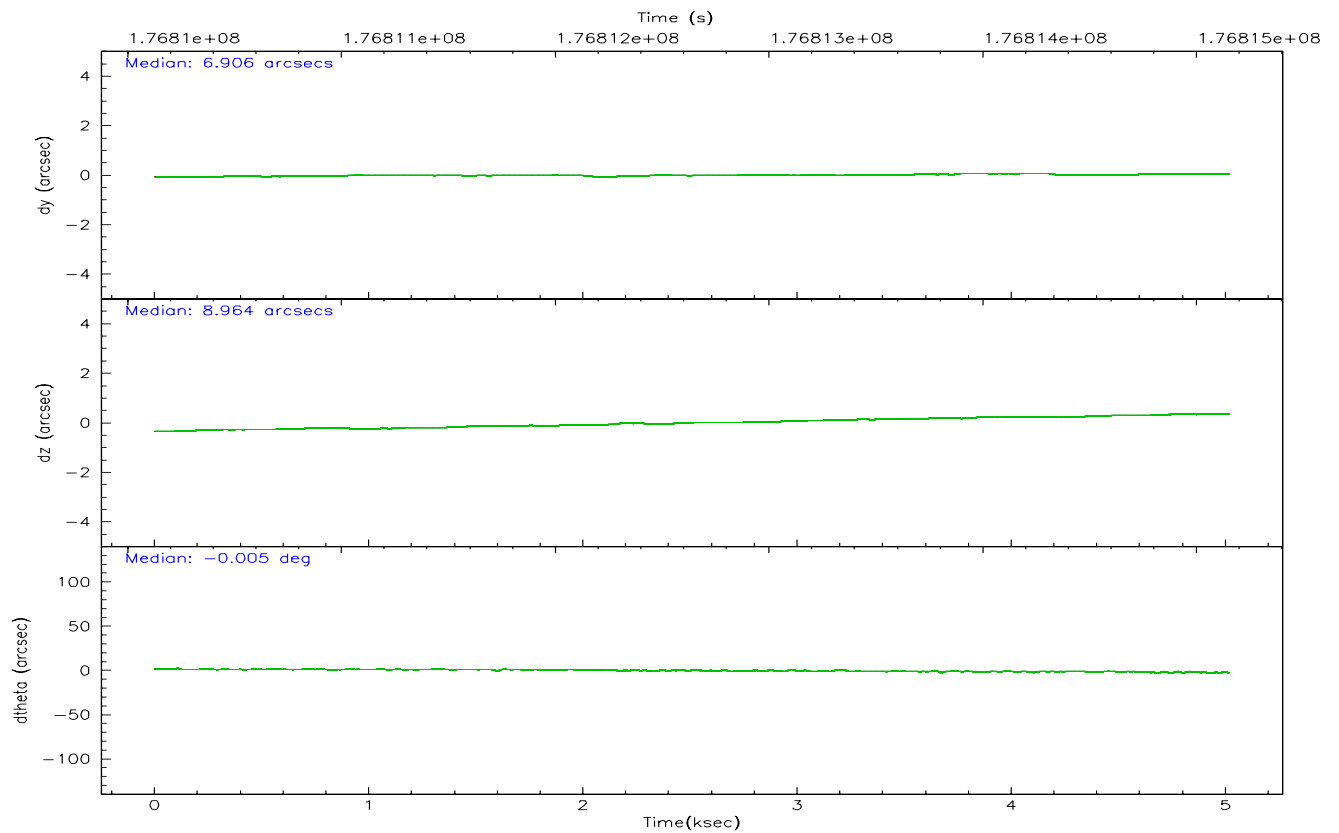
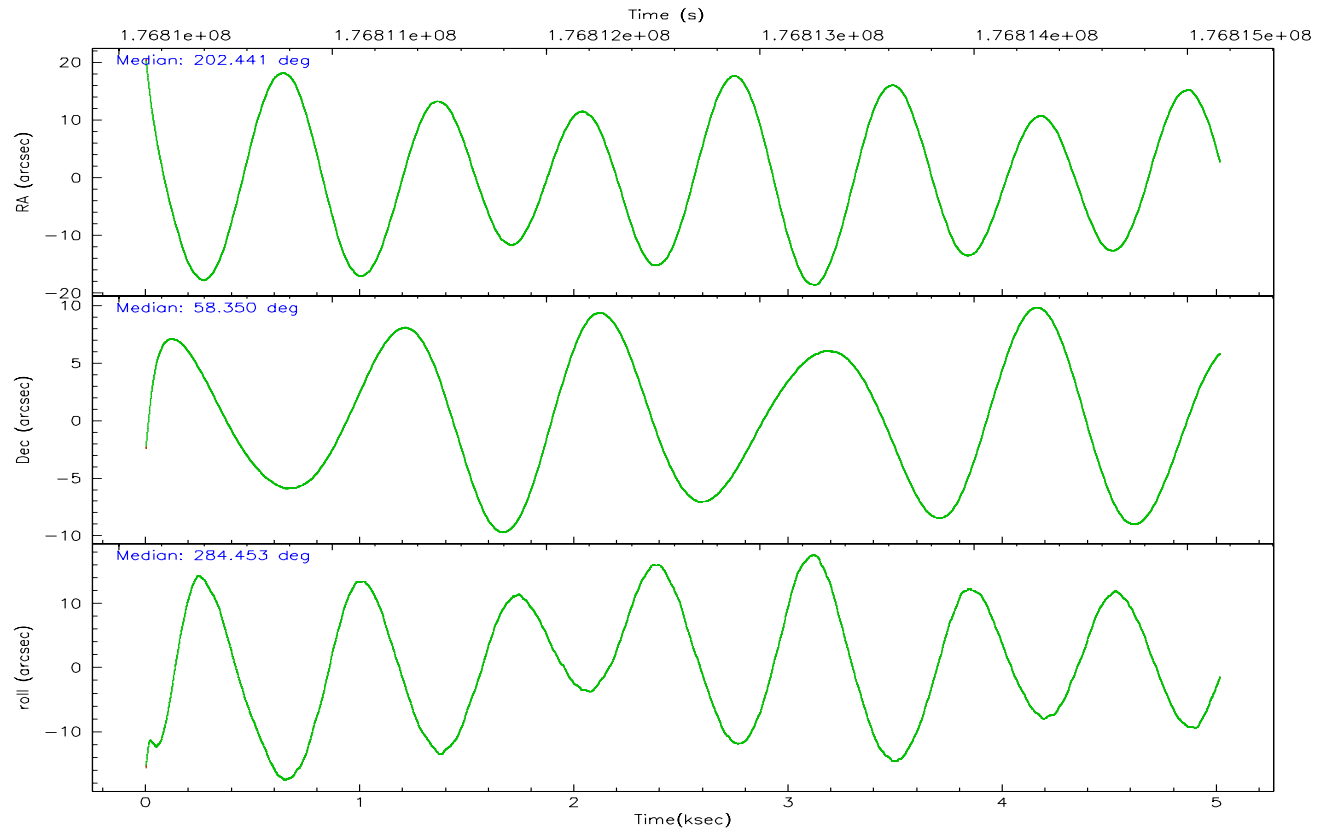
	ccd 2	ccd 3	ccd 5	ccd 6	ccd 7	ccd 8
grade 0 events	410	266	5210	283	460	479
	5%	4%	33%	4%	5%	5%
grade 1 events	3	3	26	0	7	6
	0%	0%	0%	0%	0%	0%
grade 2 events	127	84	3804	132	852	375
	1%	1%	24%	1%	10%	4%
grade 3 events	124	108	130	97	312	198
	1%	1%	0%	1%	4%	2%
grade 4 events	101	108	331	128	287	175
	1%	1%	2%	1%	3%	1%
grade 5 events	190	192	407	217	501	272
	2%	3%	2%	3%	6%	3%
grade 6 events	114	105	1958	126	1620	498
	1%	1%	12%	1%	20%	5%
grade 7 events	5787	4984	3734	5813	3720	6874
	84%	85%	23%	85%	47%	77%

2.2 Compared Parameters

Parameter	Planned	Actual	Parameter	Planned	Actual
Instrument	ACIS	ACIS	Obspar format version number	6	6
Detector	ACIS-235678	ACIS-235678	Obspar file type	PREDICTED	ACTUAL
Grating	NONE	NONE	Obspar update status	NONE	UPDATED
Data mode	FAINT	FAINT	On-chip summing requested	N	N
Observation mode	POINTING	POINTING	Subarray requested	1/8	1/8
Pointing RA	202.404214	202.4411345867971	Subarray start row	0	449
Pointing Dec	58.368587	58.34943185942126	Subarray row count	1024	128
Pointing Roll	284.326746	284.4519747674819	Alternating exposures requested	N	N
SIM focus pos (mm)	-0.684267	-0.6828225247311905	Primary exposure time	0.000000	0.7
SIM defocus (mm)	0	0.001444936568705701			
SIM translation stage pos (mm)	-190.132523	-190.1425803651734			
SIM translation stage offset (mm)	0	0.01005778216563158			
Observation start time	176810284.184000	176808980.09697			
Observation start date	2003-08-09T09:57:00	2003-08-09T09:36:20			
Observation end time	176815147.184000	176815461.68475			
Observation end date	2003-08-09T11:18:03	2003-08-09T11:24:21			
Read mode	TIMED	TIMED			

2.3 Aspect



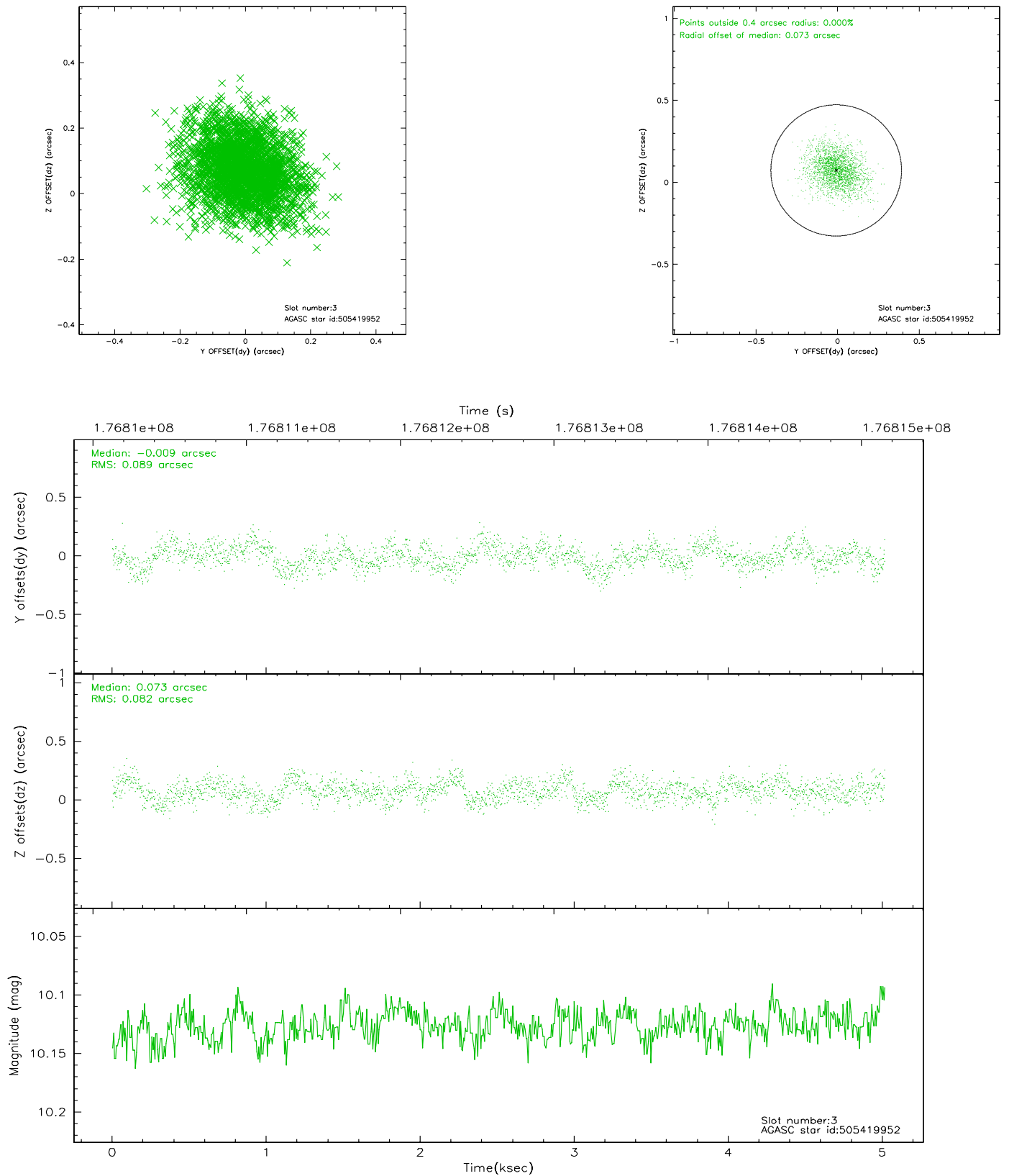


Slot Statistics

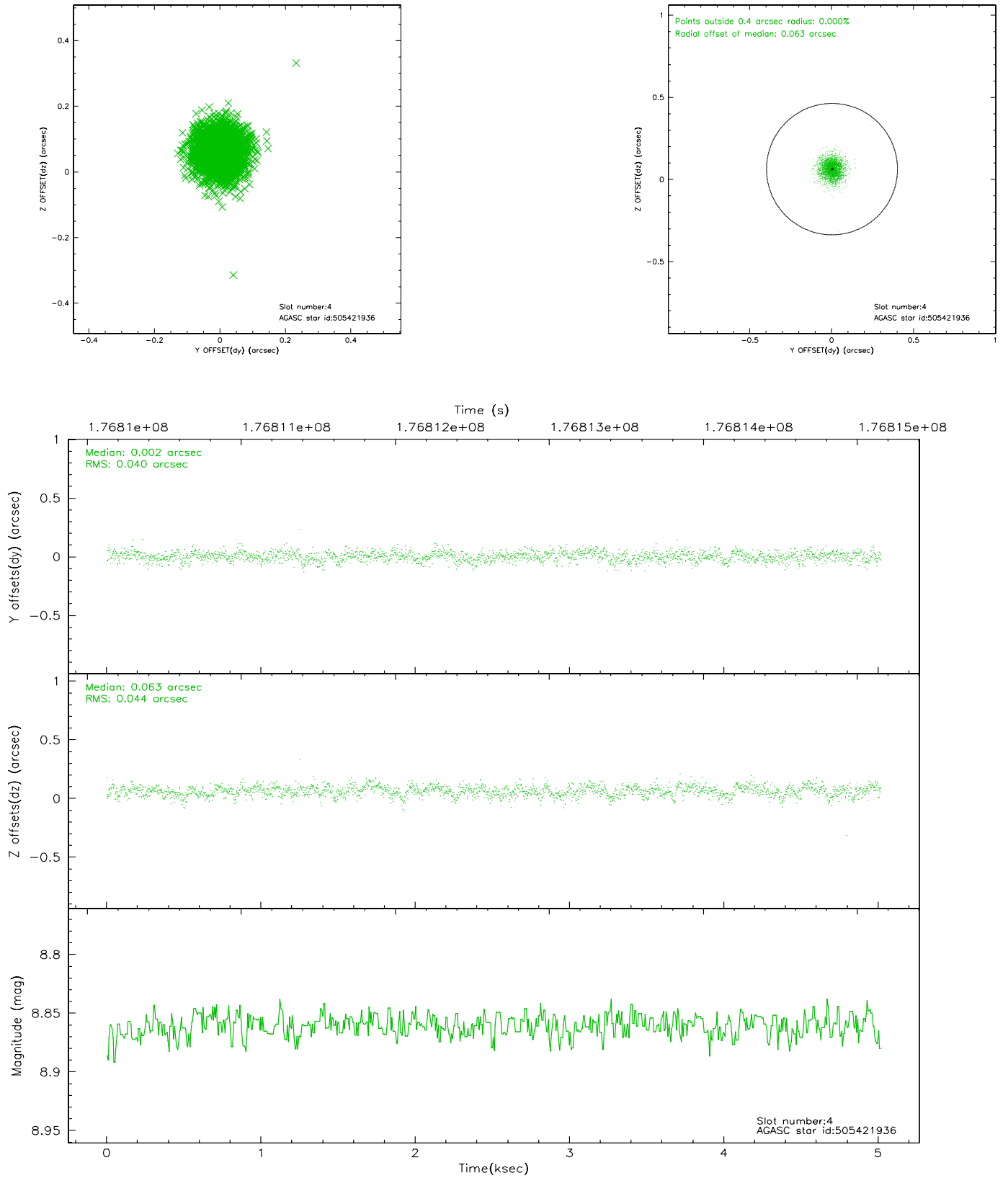
slot	status	id	mag	n_pts	med_dy	med_dz	dr1	dr2	ra	dec	mean_y	mean_z
0	FID	ACIS-S-1	7.18	1224	0.029	0.003	0.011	0.018	0.000000	0.000000	936.39	-1725.77
1	FID	ACIS-S-5	7.23	1224	-0.032	0.038	0.009	0.014	0.000000	0.000000	-1811.96	170.61
2	FID	ACIS-S-6	7.35	1224	-0.019	-0.029	0.008	0.013	0.000000	0.000000	400.62	815.84
3	GUIDE	505419952	10.13	2447	-0.009	0.073	0.128	0.213	201.880700	58.804366	-1764.72	-556.51
4	GUIDE	505421936	8.86	2448	0.002	0.063	0.062	0.102	201.854843	57.887820	1412.47	-1445.99
5	GUIDE	505421968	8.19	2448	0.050	-0.028	0.058	0.092	202.022601	58.209270	375.81	-843.26
6	GUIDE	505422344	8.62	2448	0.012	-0.040	0.065	0.103	202.767077	57.846963	1990.48	209.06
7	GUIDE	505418080	9.06	2447	-0.058	-0.070	0.075	0.120	201.533017	58.898788	-2259.15	-1094.66

2.4 Star Slots

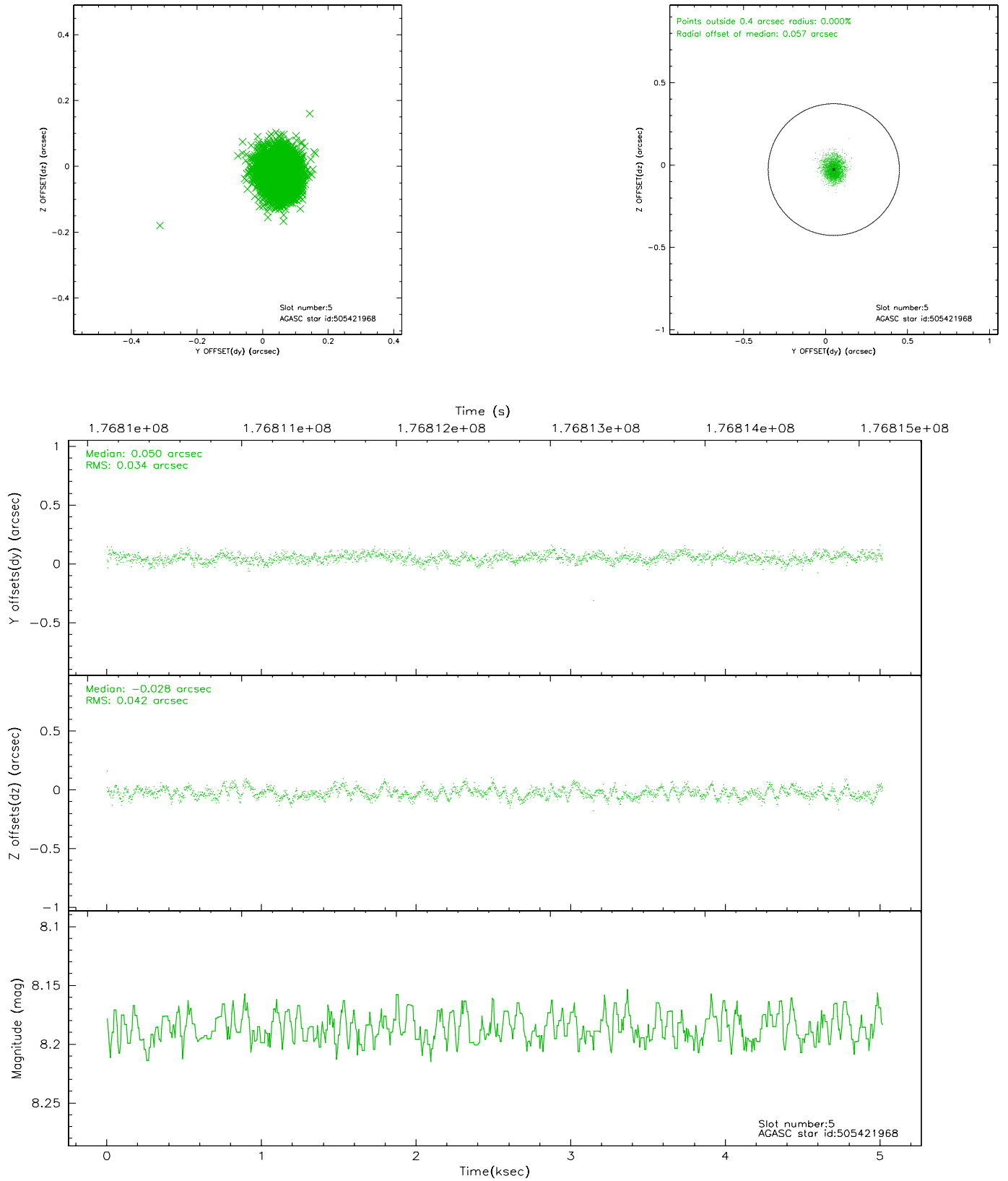
2.4.1 Slot 3



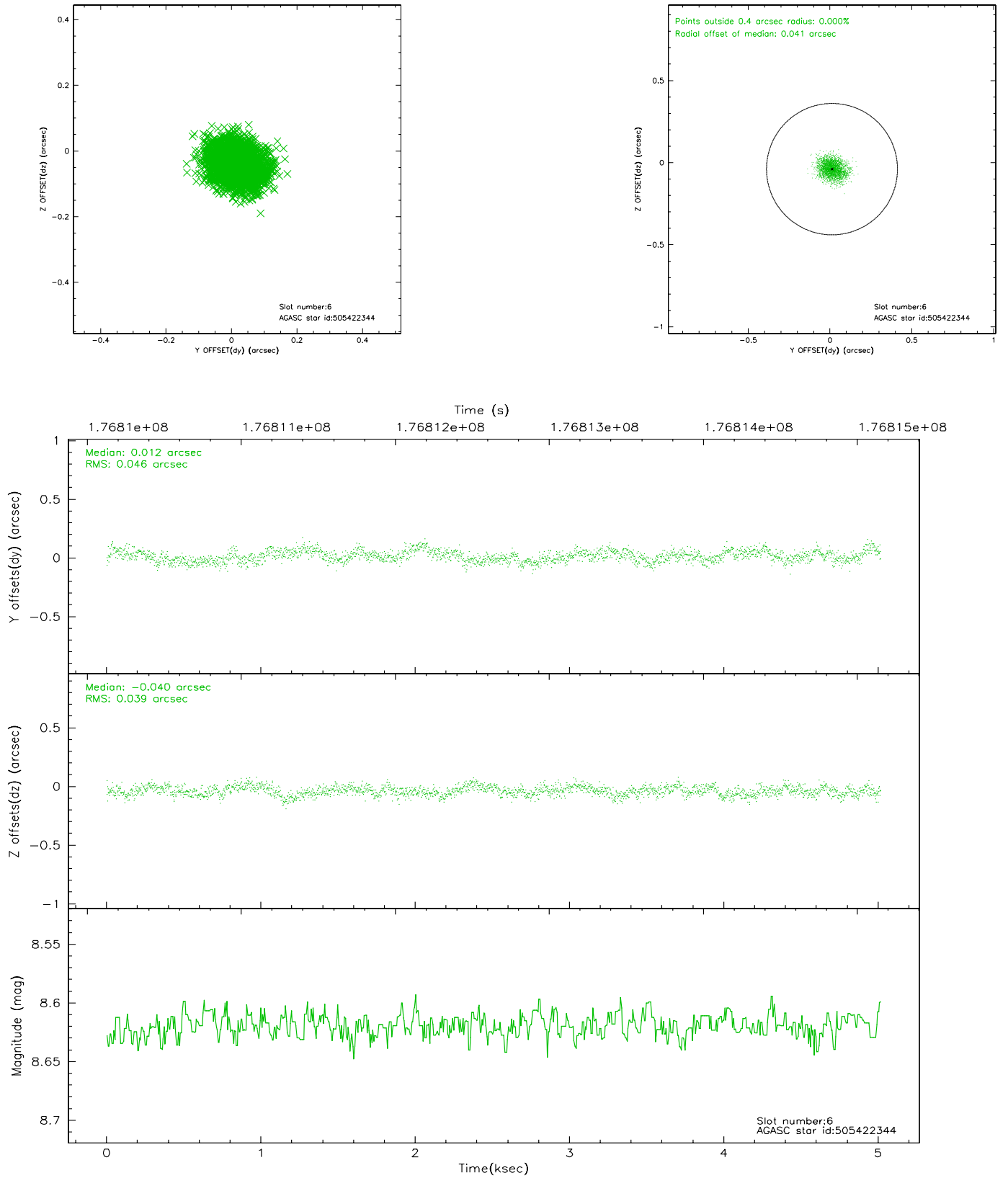
2.4.2 Slot 4



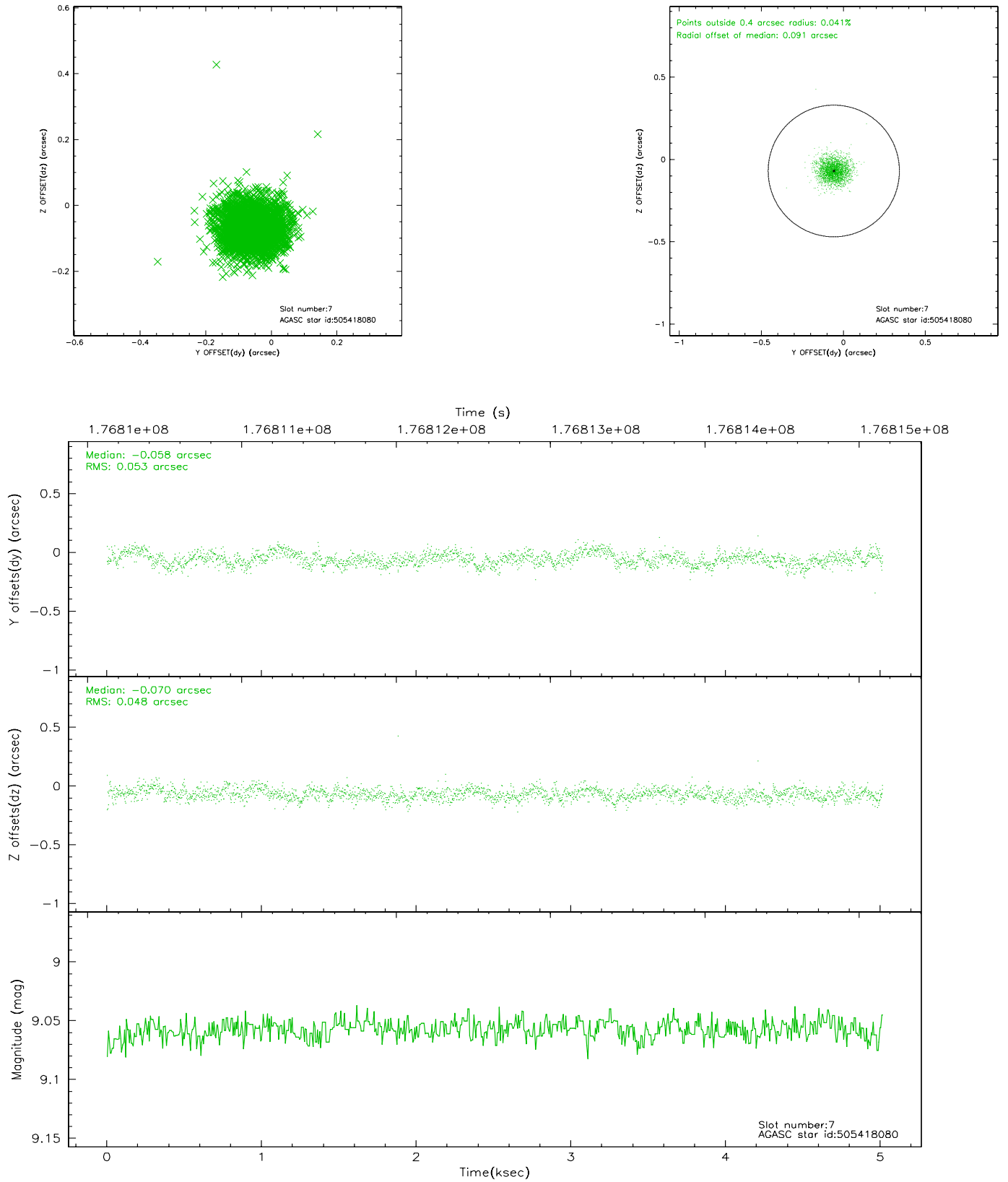
2.4.3 Slot 5



2.4.4 Slot 6

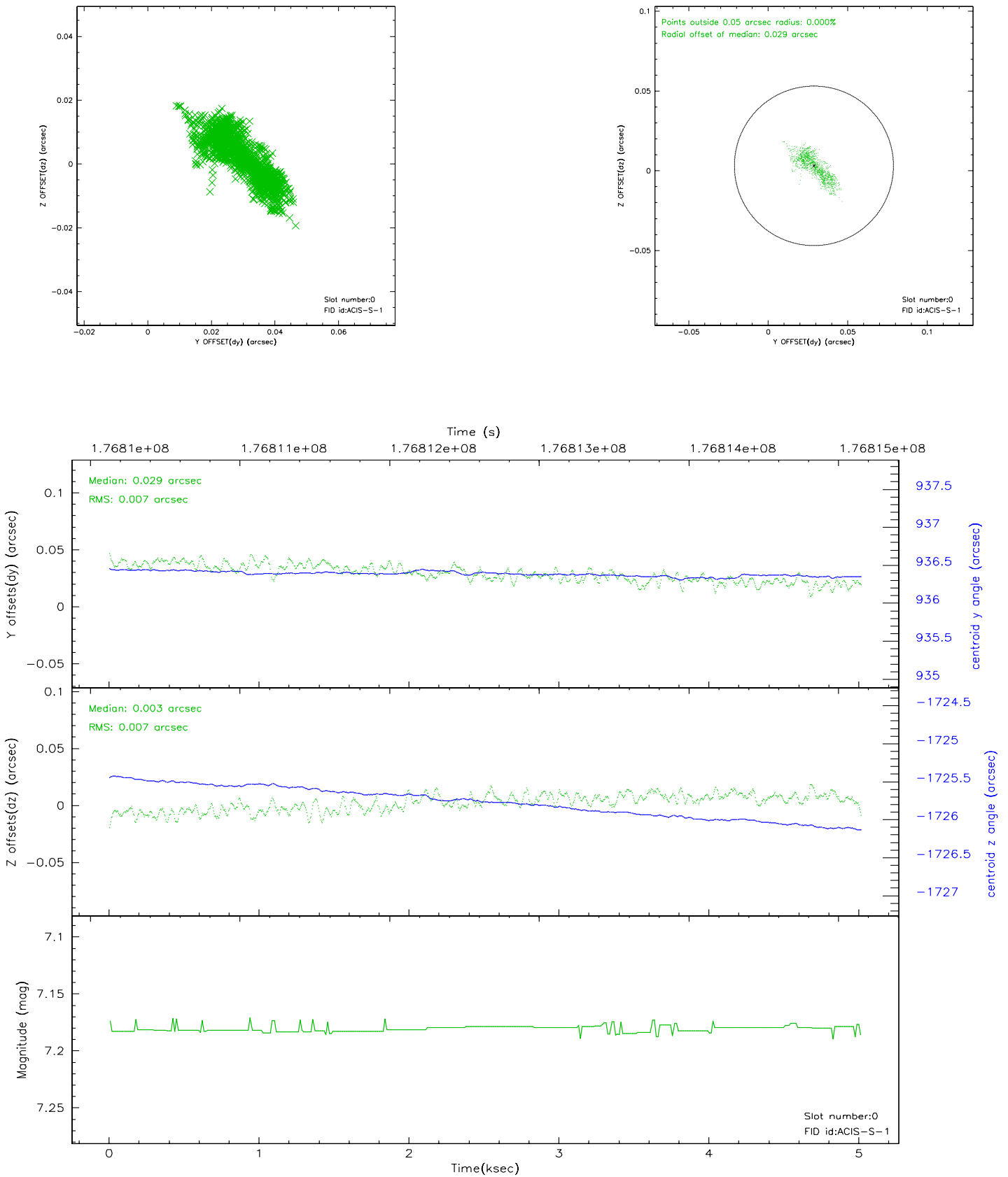


2.4.5 Slot 7

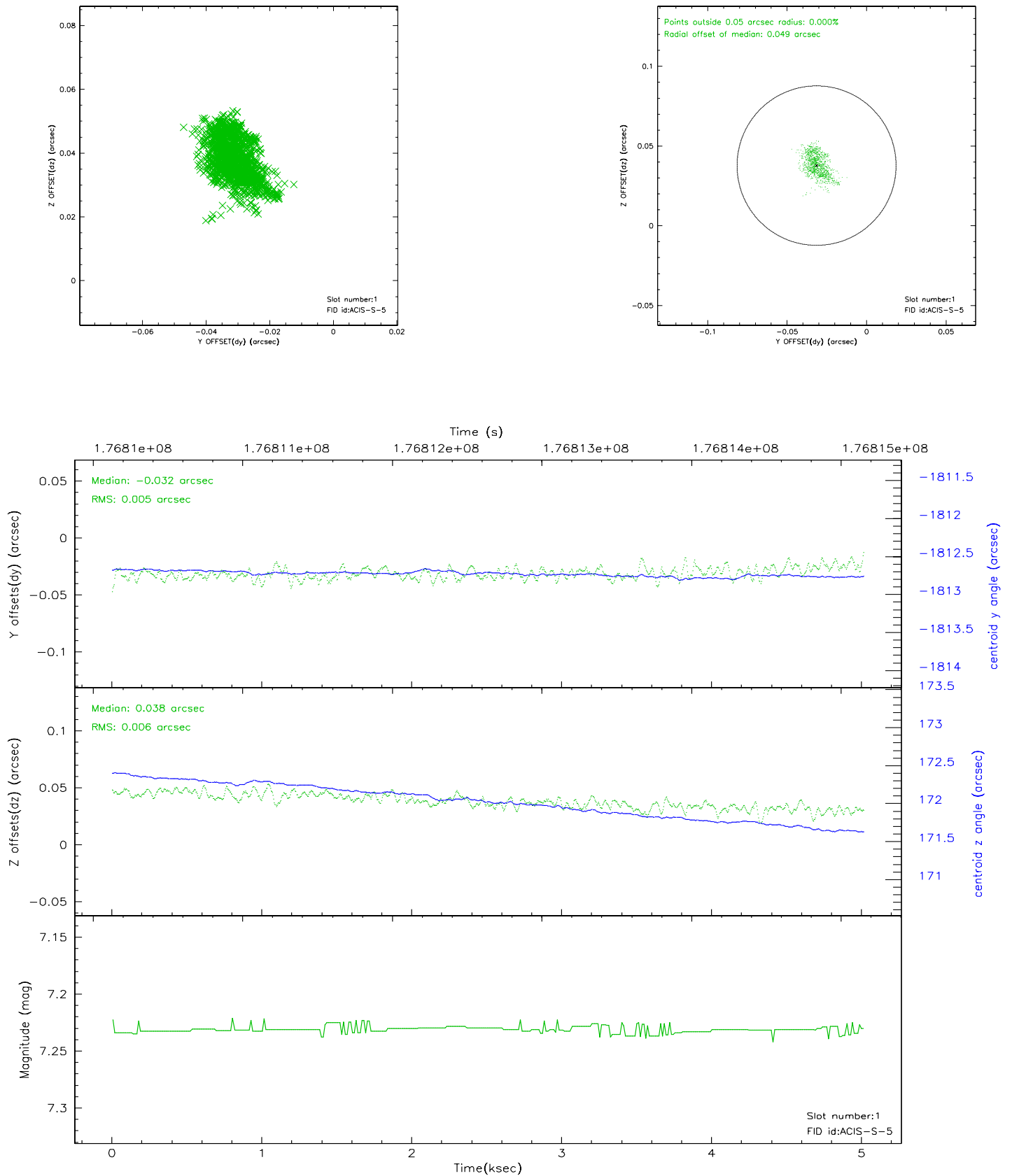


2.5 FID Slots

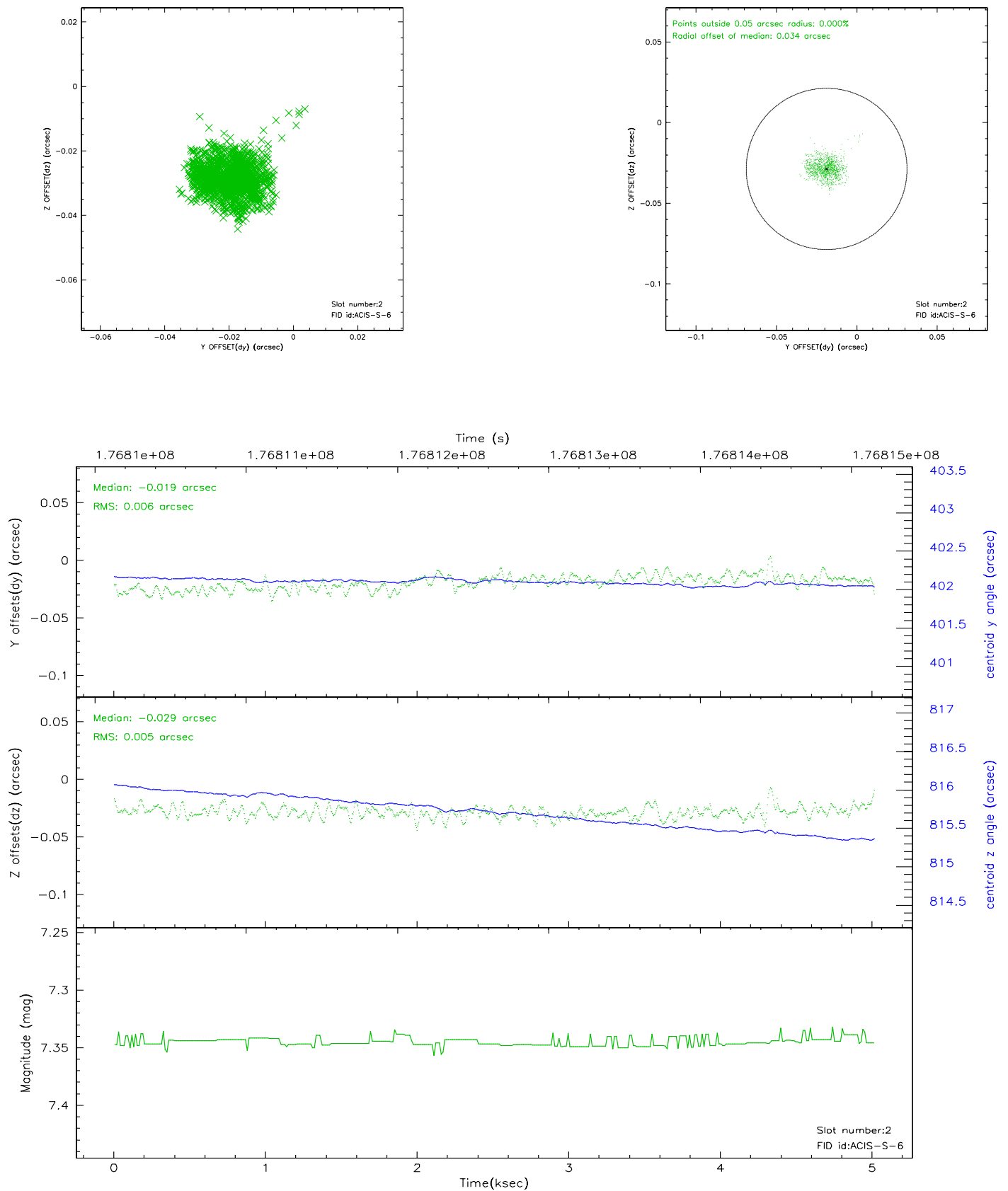
2.5.1 Slot 0



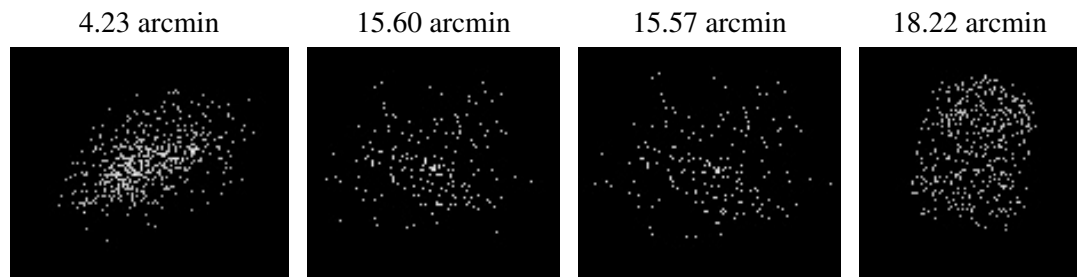
2.5.2 Slot 1



2.5.3 Slot 2



3 Point Sources



A Summary

A.1 Status

V&V Scientist	Jen Lauer
V&V Date (YYYY-MM-DD)	2006.07.11
V&V Edition	1
V&V Disposition and Status	OK
V&V Charge Time	5.015

A.2 Comments

Monitor constraint met.