

V&V Reference Report

L2 ASCDS Version : 7.6.7.2

Observation 5247 - L2 Version 3
Chandra X-Ray Center

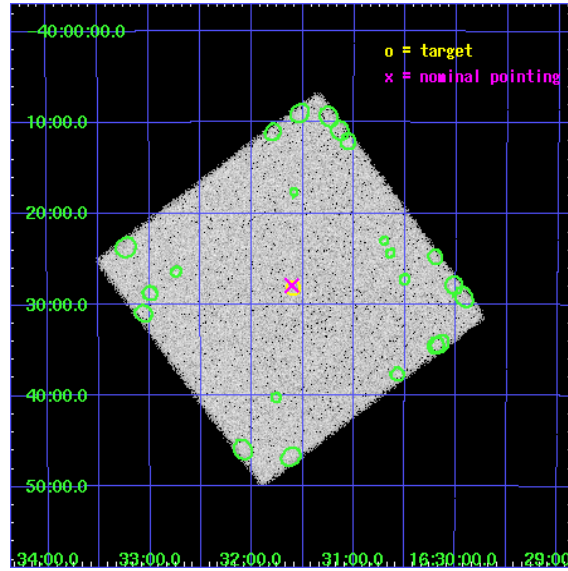
L2 Processing Date : Nov 23 2007

Contents

1	Front	2
2	OBI	3
2.1	OBI	3
2.1.1	Images	3
2.1.2	Parameters	4
2.1.3	Events	4
2.2	Compared Parameters	5
2.3	Aspect	6
2.4	Star Slots	9
2.4.1	Slot 3	9
2.4.2	Slot 4	10
2.4.3	Slot 5	11
2.4.4	Slot 6	12
2.4.5	Slot 7	13
2.5	FID Slots	14
2.5.1	Slot 0	14
2.5.2	Slot 1	15
2.5.3	Slot 2	16
3	Point Sources	17
A	Summary	18
A.1	Status	18
A.2	Comments	18

1 Front

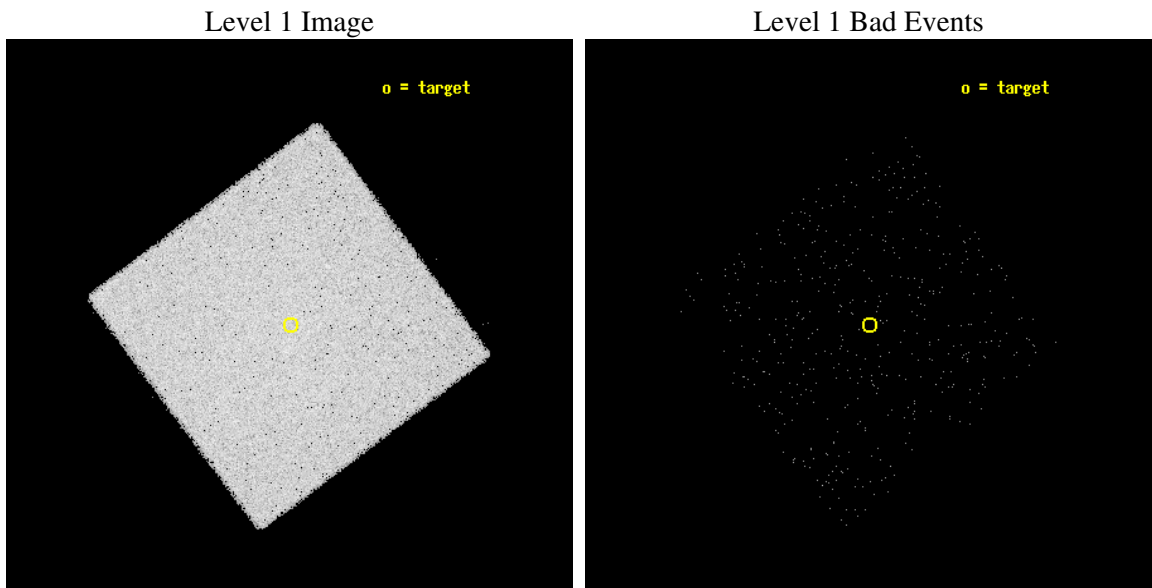
seq_num	500500
obs_id	5247
title	Understanding the nature of the unidentified EGRET source 3EG J1631-4033
observer	Dr. Luigi Foschini
object	IGR J16316-4028
ra_targ	247.9
dec_targ	-40.47
ra_nom	247.90159907581
dec_nom	-40.465713681158
roll_nom	98.173791484258
revision	3
ontime	4871.0564623773
livetime	4840.2122587374
l2events	189510



2 OBI

2.1 OBI

2.1.1 Images



2.1.2 Parameters

obi_num	1
ascdsver	7.6.11.2
caldbver	3.4.1
date	2007-11-23T22:14:37
revision	3

sched_exp_time	5000.000000
ontime	4871.0564623773
l1events	277007

2.1.3 Events

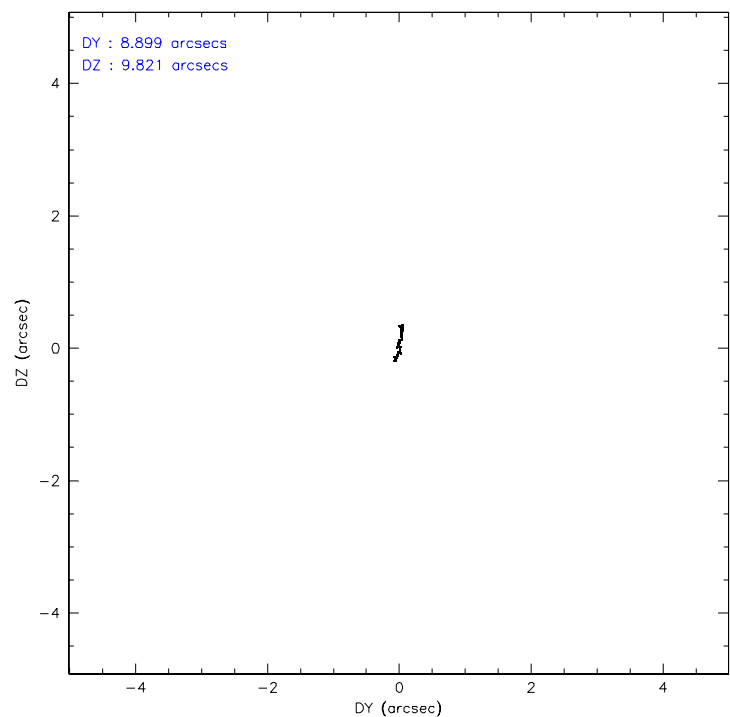
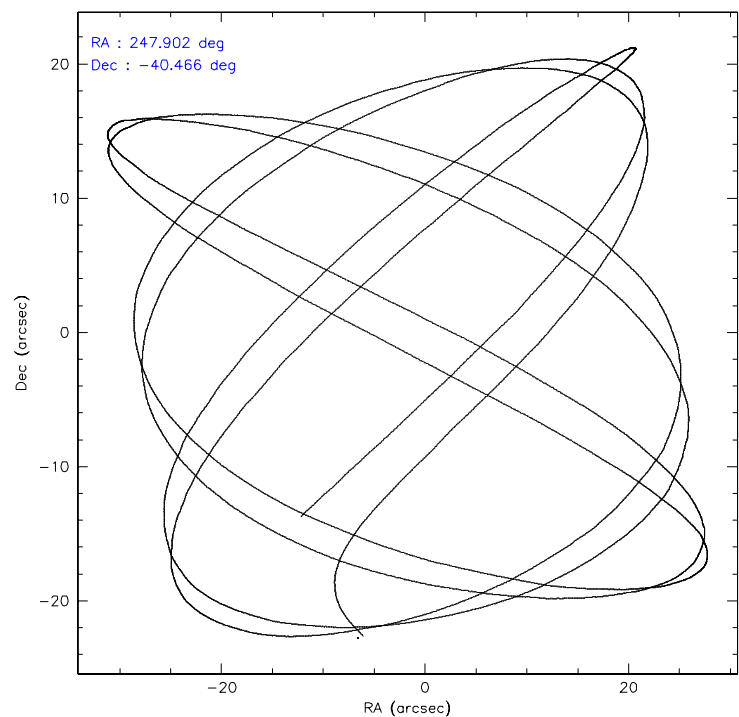
Level 1 Events

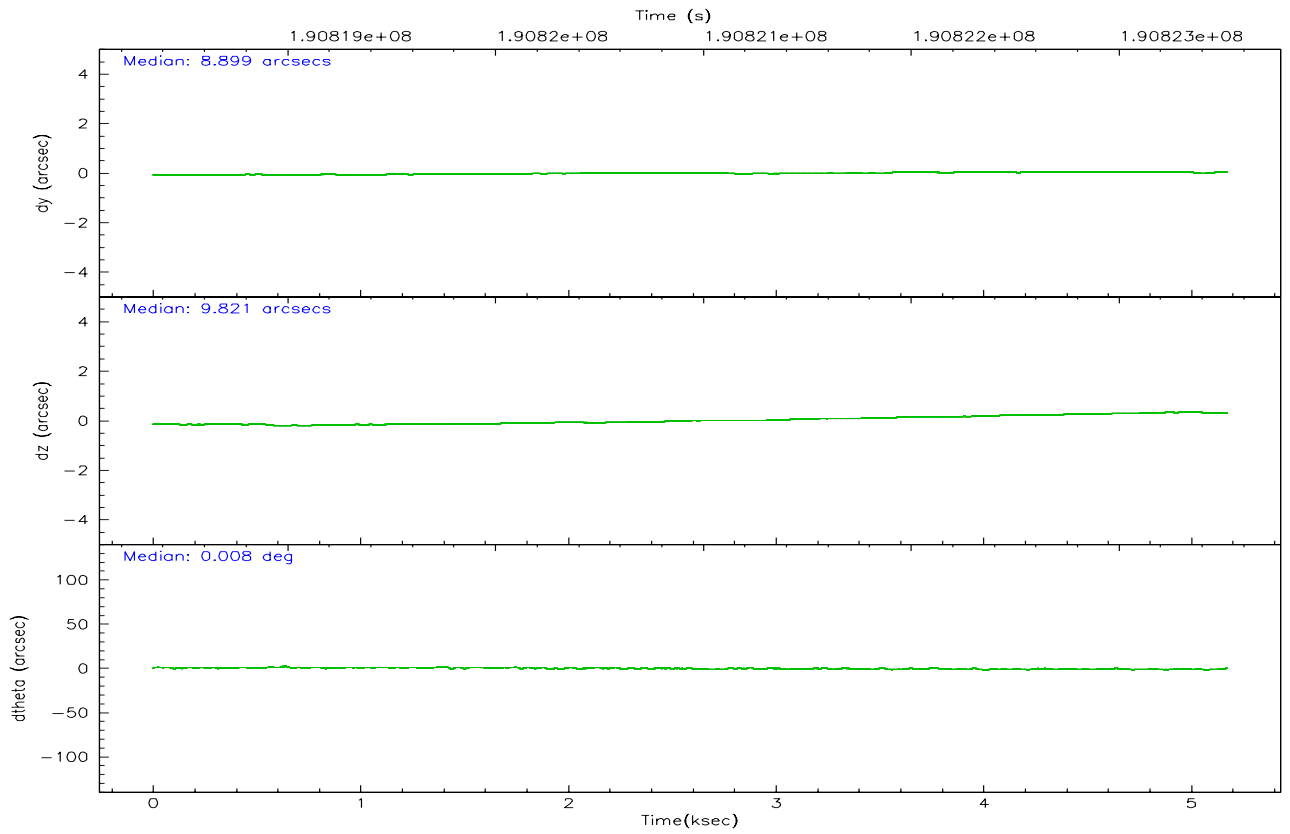
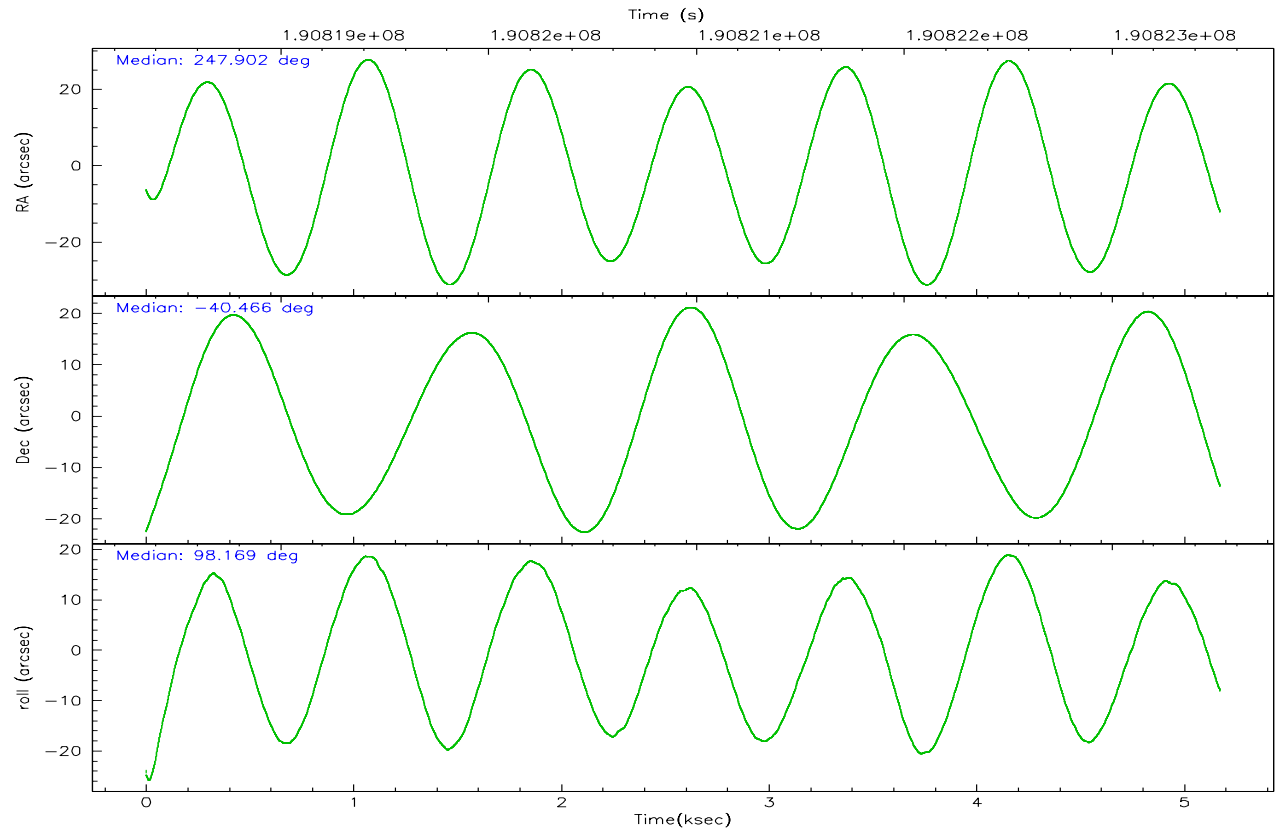
	segment 0
level 1 events	277007
rejected events	7227
rejected %	2%

2.2 Compared Parameters

Parameter	Planned	Actual	Parameter	Planned	Actual
Instrument	HRC	HRC	Obspar format version number	6	6
Detector	HRC-I	HRC-I	Obspar file type	PREDICTED	ACTUAL
Grating	NONE	NONE	Obspar update status	NONE	UPDATED
Data mode	OBSERVING	OBSERVING			
Observation mode	POINTING	POINTING			
Pointing RA	247.924045	247.9015990758051			
Pointing Dec	-40.486878	-40.46571368115821			
Pointing Roll	98.283890	98.17379148425823			
SIM focus pos (mm)	-1.040293	-1.038866356238299			
SIM defocus (mm)	0	0.001426264420575141			
SIM translation stage pos (mm)	126.985494	126.9854943052878			
SIM translation stage offset (mm)	0	-5.413686238853188e-06			
Observation start time	190818525.184000	190817633.15144			
Observation start date	2004-01-18T13:07:41	2004-01-18T12:53:53			
Observation end time	190823525.184000	190824396.10173			
Observation end date	2004-01-18T14:31:01	2004-01-18T14:46:36			

2.3 Aspect



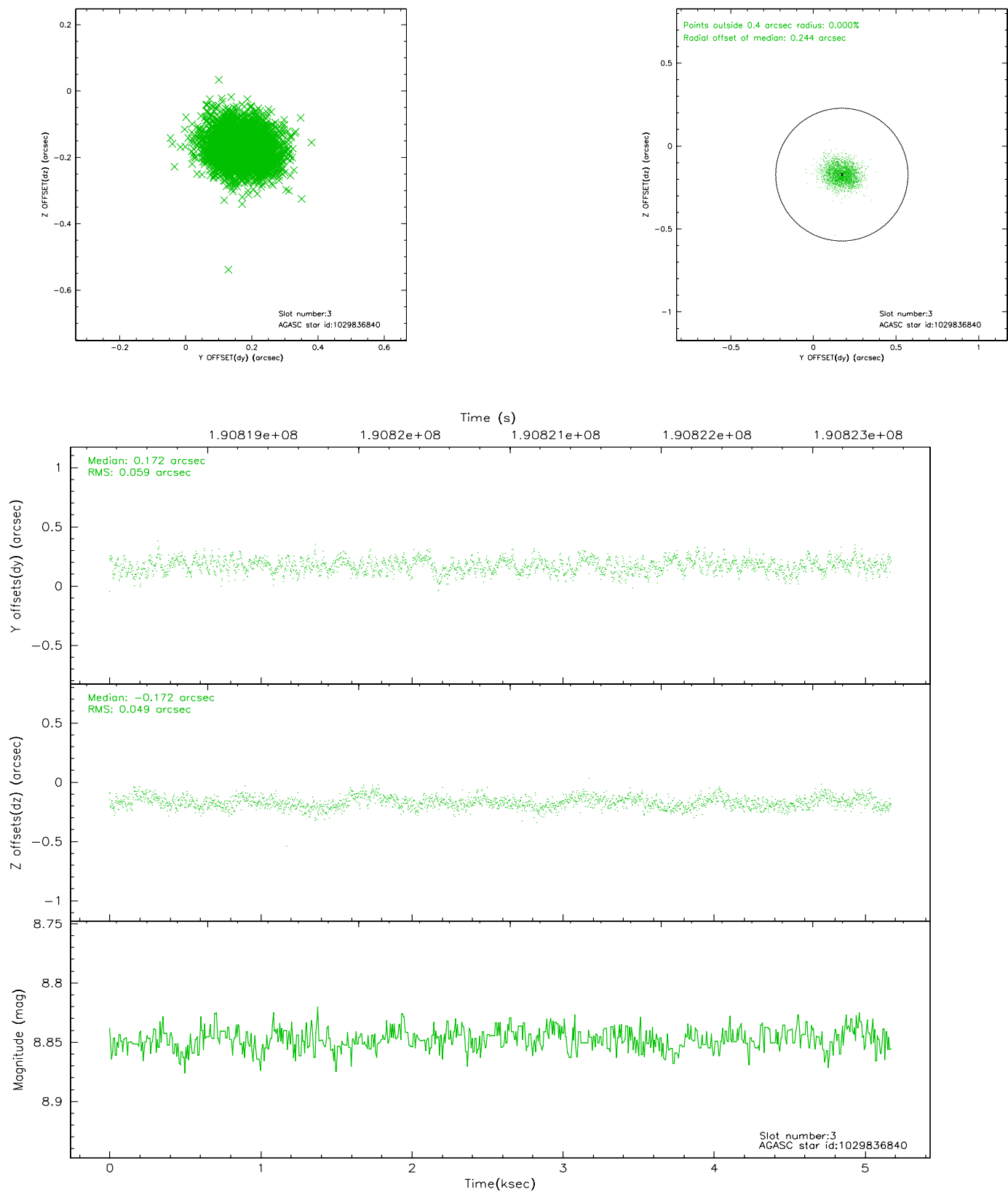


Slot Statistics

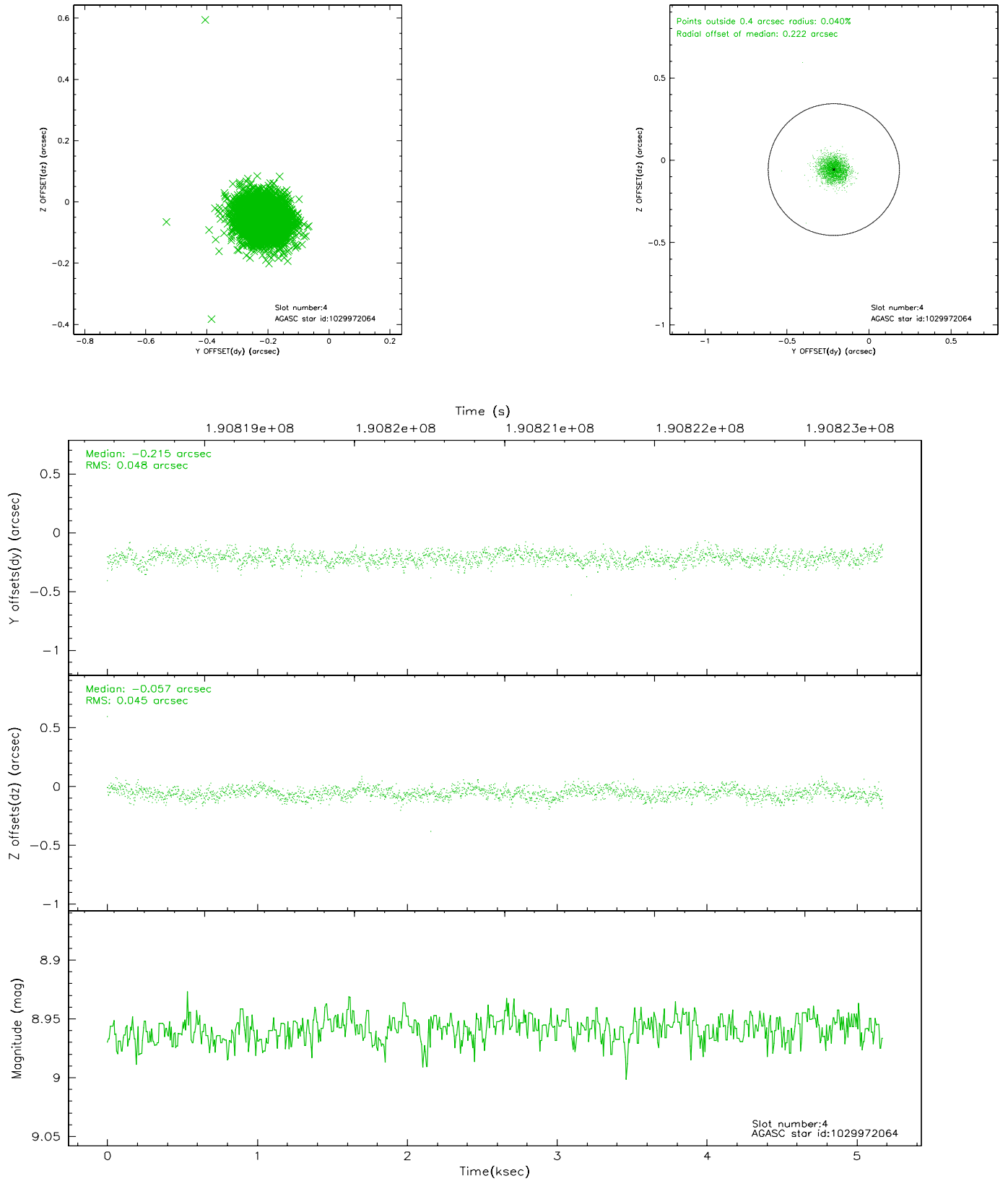
slot	status	id	mag	n_pts	med_dy	med_dz	dr1	dr2	ra	dec	mean_y	mean_z
0	FID	HRC-I-1	6.98	1262	-0.024	0.040	0.008	0.014	0.000000	0.000000	-764.54	-1297.80
1	FID	HRC-I-2	7.03	1262	0.132	-0.079	0.008	0.012	0.000000	0.000000	847.65	-1300.50
2	FID	HRC-I-3	7.08	1263	0.010	-0.051	0.007	0.011	0.000000	0.000000	-1192.34	1005.64
3	GUIDE	1029836840	8.85	2524	0.172	-0.172	0.082	0.129	247.445235	-41.071470	-1899.55	1590.28
4	GUIDE	1029972064	8.96	2525	-0.215	-0.057	0.070	0.109	247.559676	-40.037973	1740.12	762.95
5	GUIDE	1029976280	7.77	2525	0.115	0.107	0.066	0.108	248.175416	-41.034607	-2050.53	-390.08
6	GUIDE	1029977216	7.90	2525	0.043	-0.010	0.068	0.109	248.402376	-40.770339	-1202.58	-1142.35
7	GUIDE	1029966624	9.34	2520	-0.119	0.135	0.107	0.181	248.599474	-39.897512	1822.63	-2150.10

2.4 Star Slots

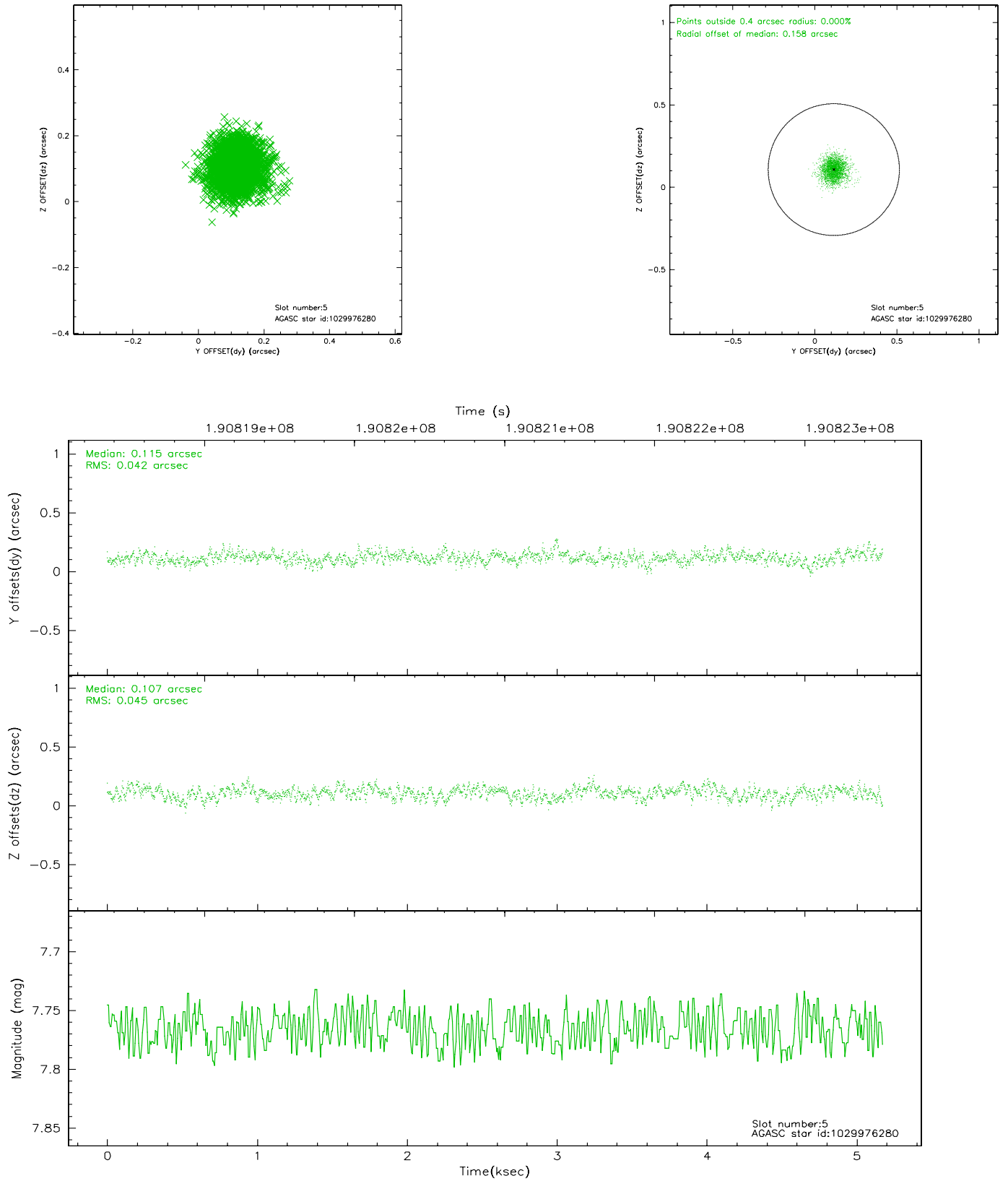
2.4.1 Slot 3



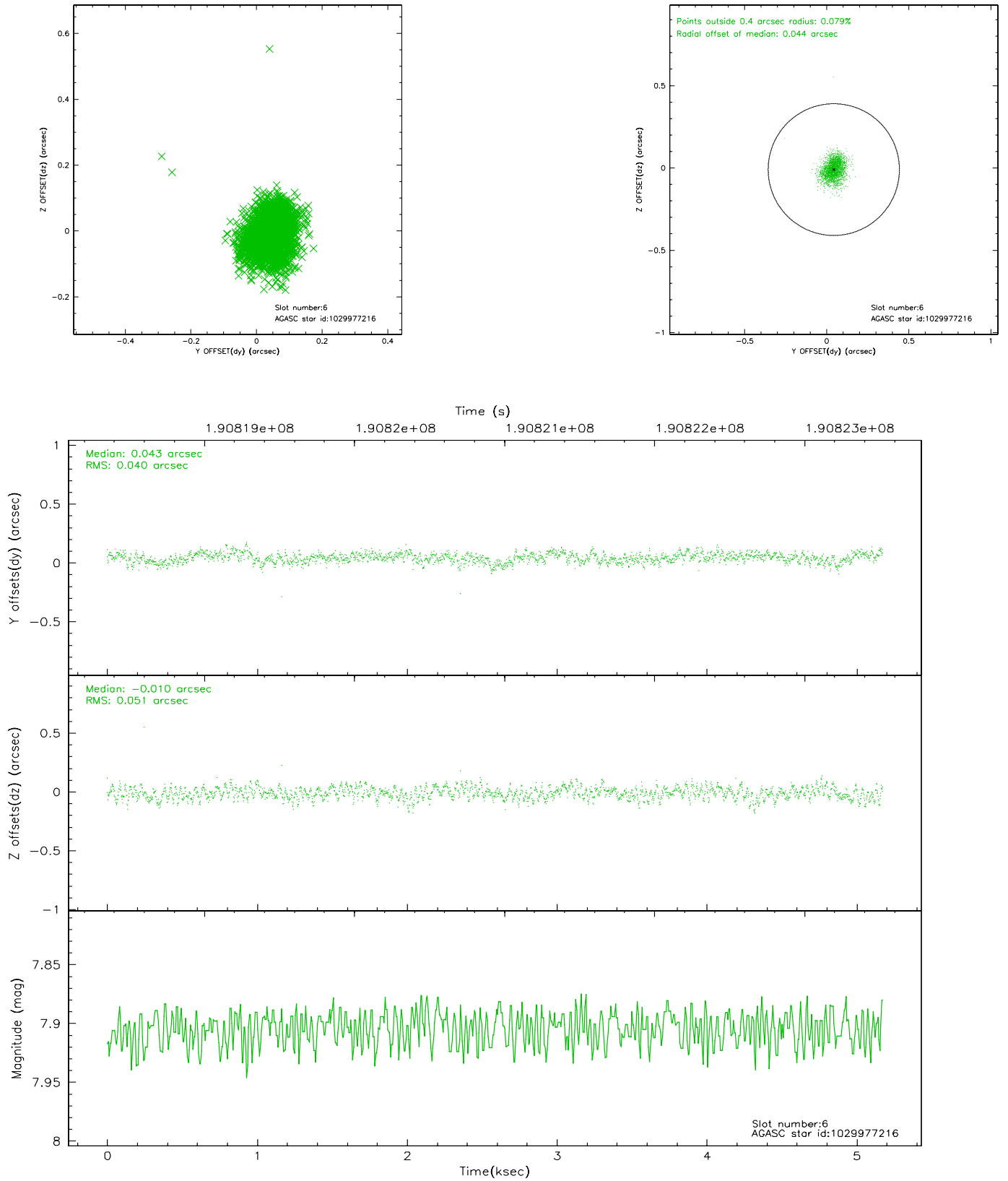
2.4.2 Slot 4



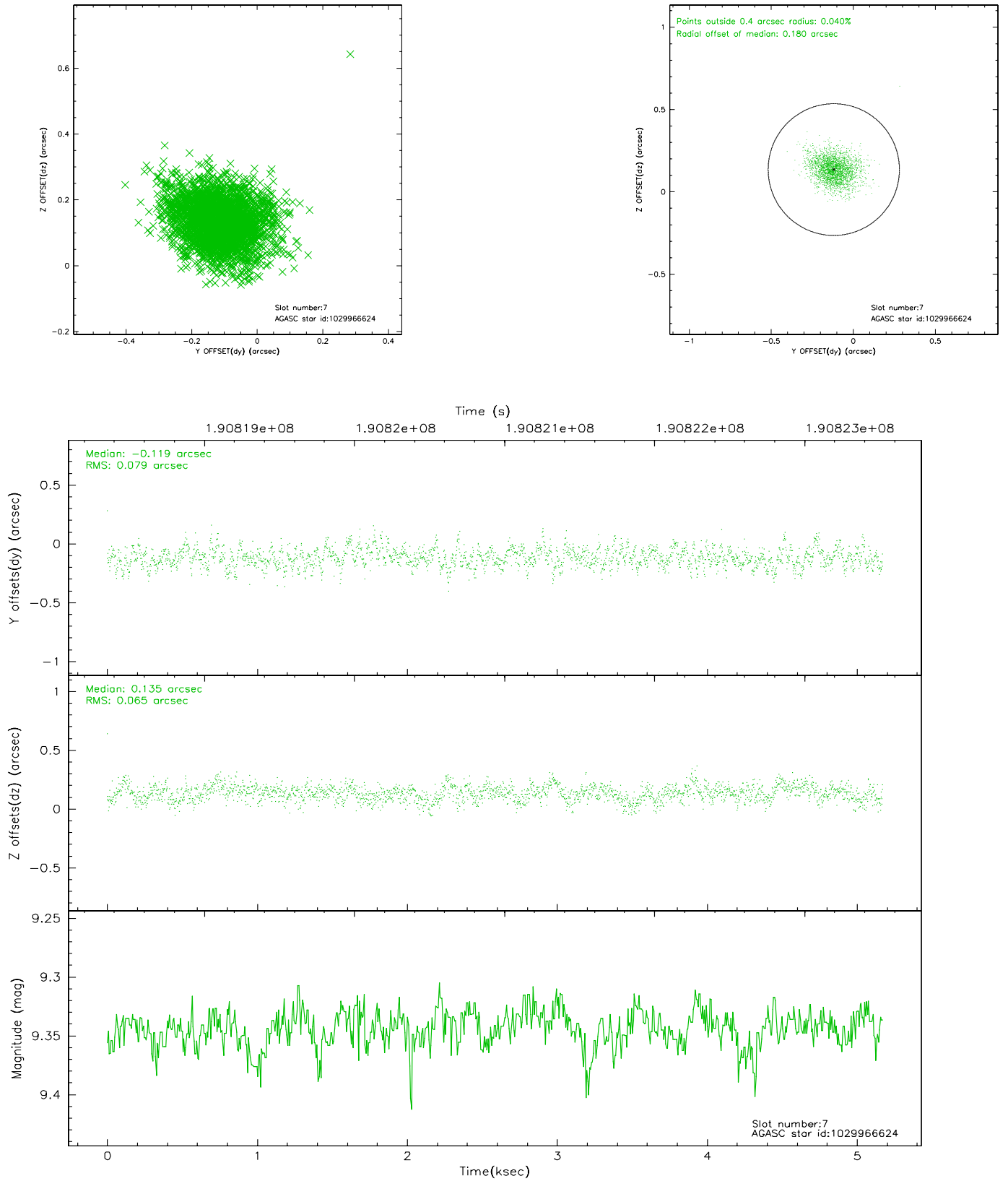
2.4.3 Slot 5



2.4.4 Slot 6

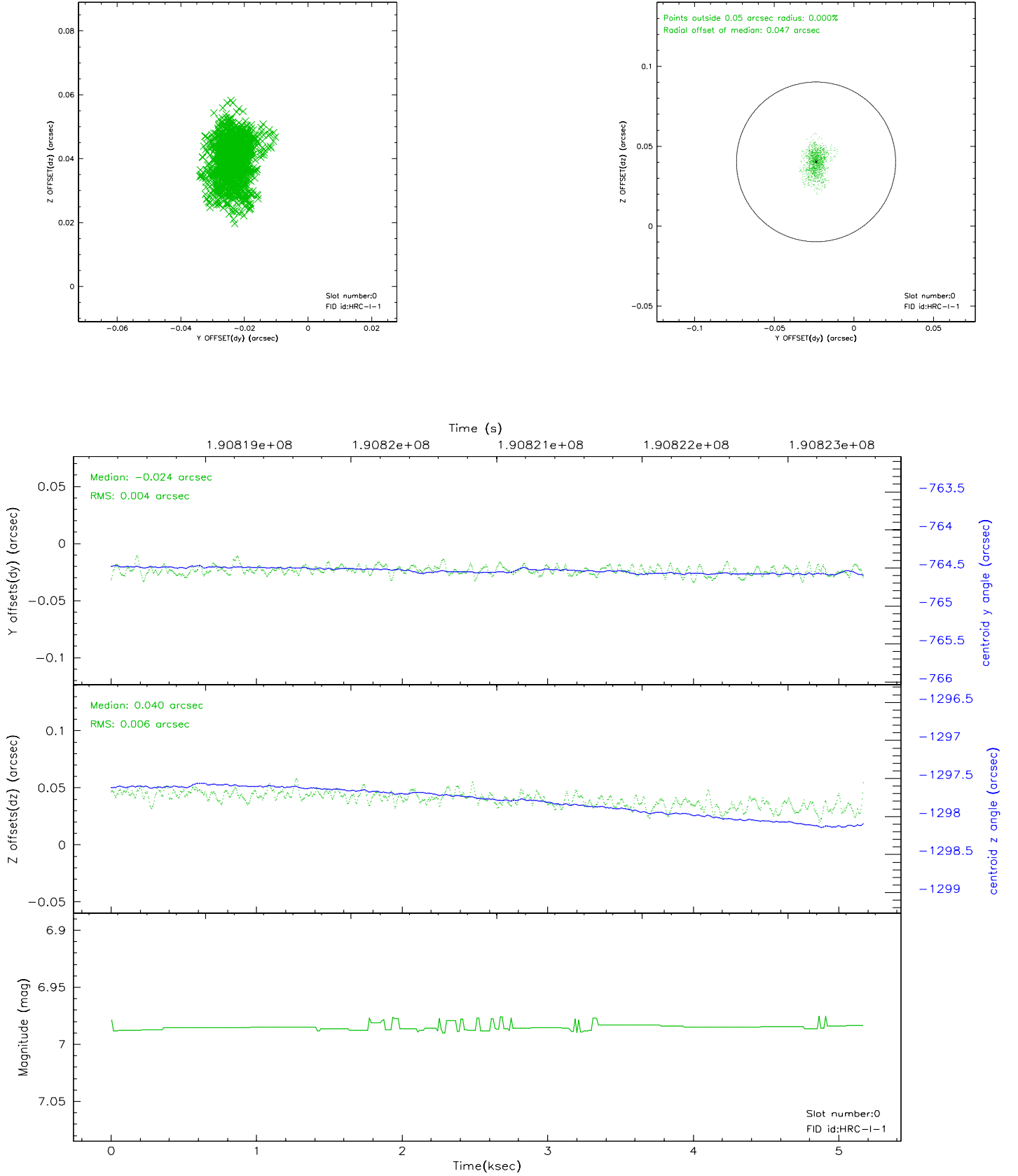


2.4.5 Slot 7

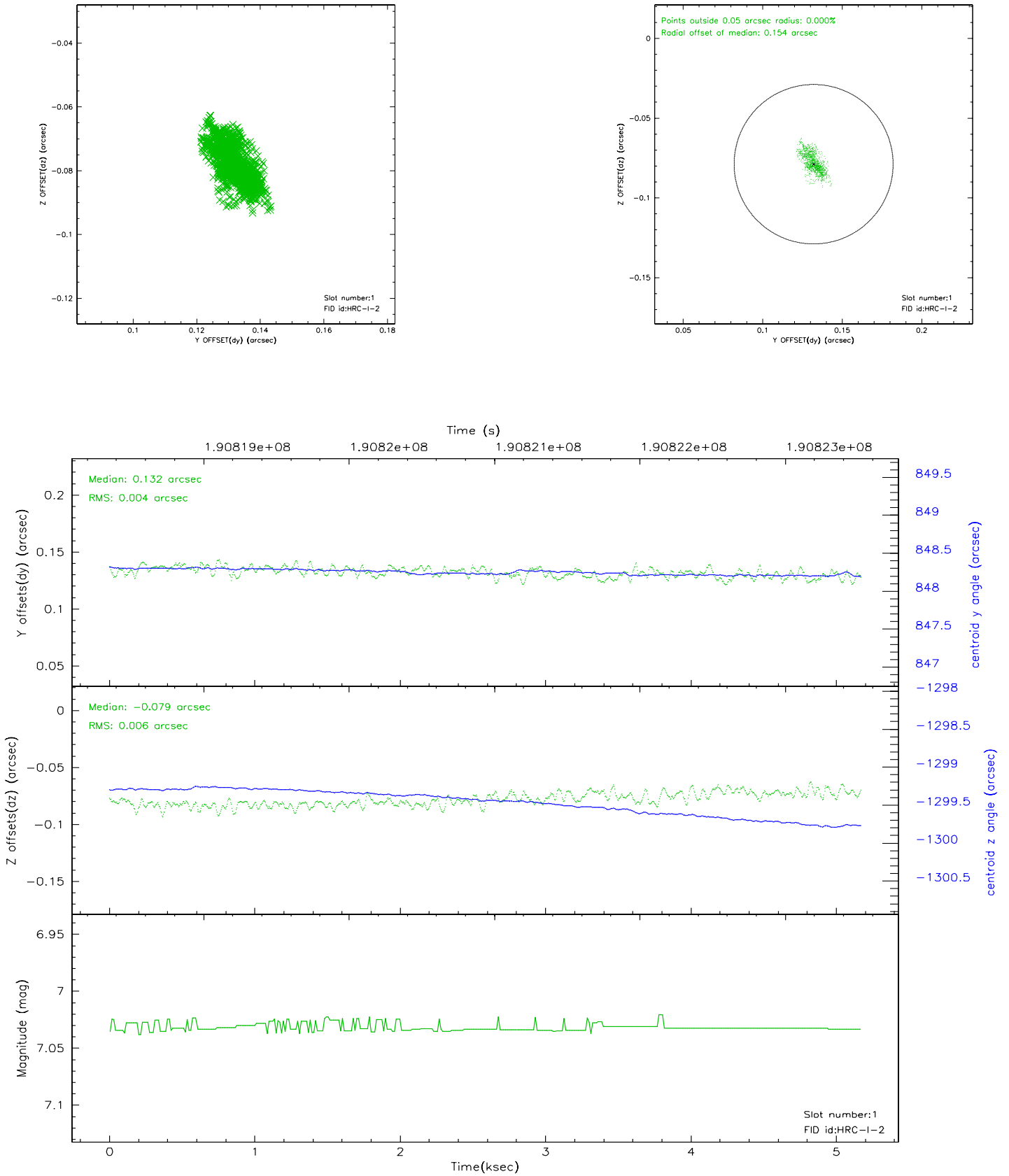


2.5 FID Slots

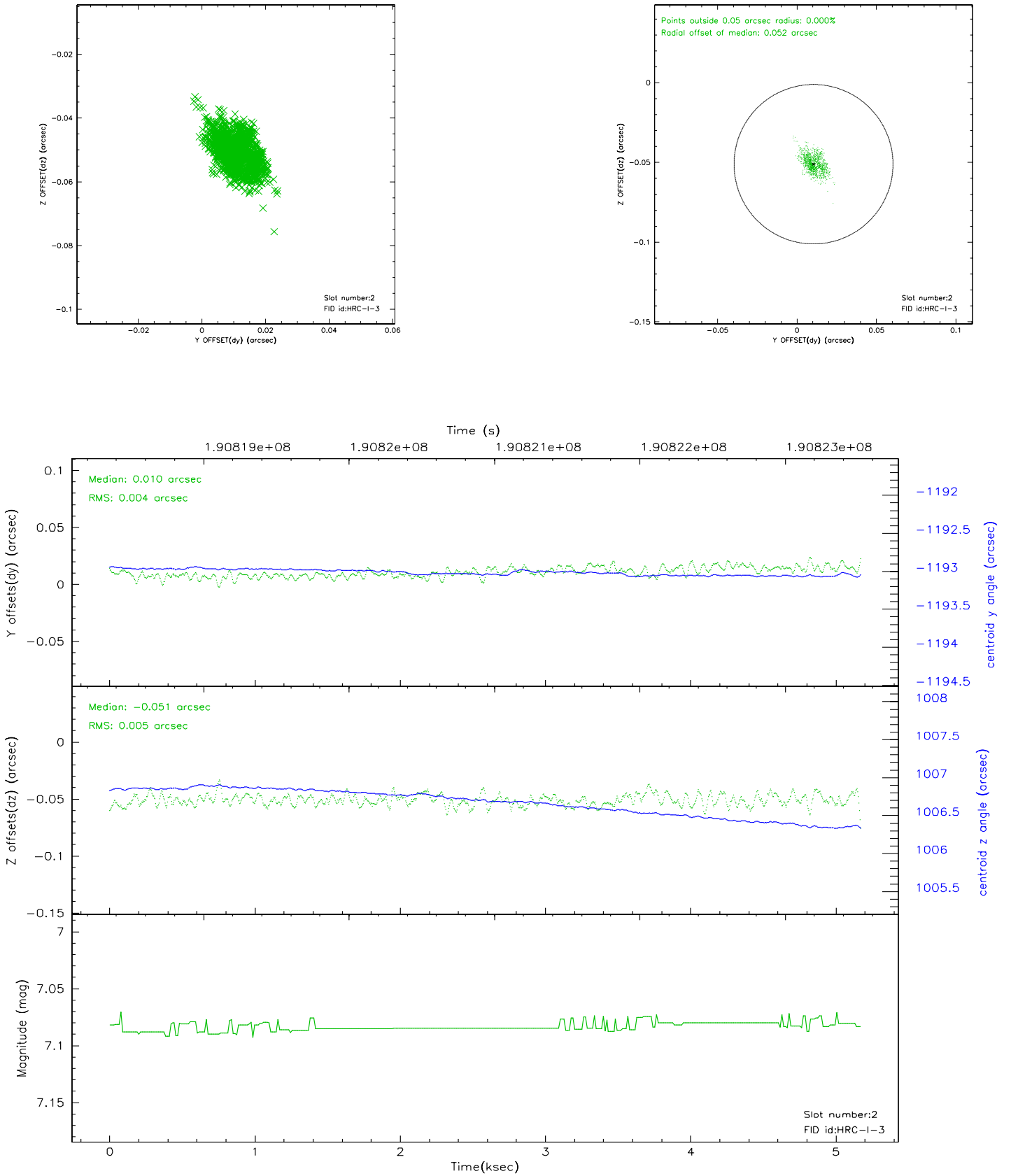
2.5.1 Slot 0



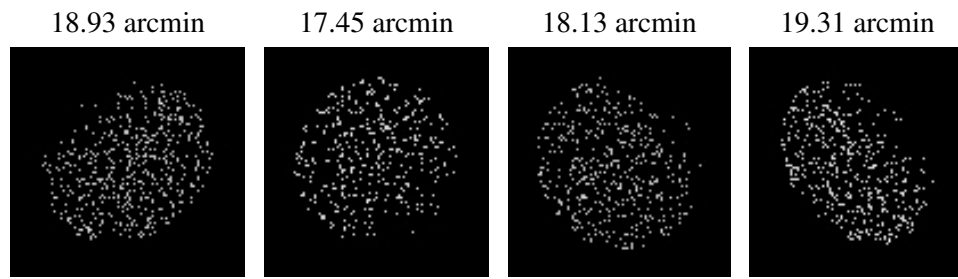
2.5.2 Slot 1



2.5.3 Slot 2



3 Point Sources



A Summary

A.1 Status

V&V Scientist	Beth Sundheim
V&V Date (YYYY-MM-DD)	2007.12.05
V&V Edition	1
V&V Disposition and Status	OK
V&V Charge Time	4.871

A.2 Comments

The current observation has been reprocessed as part of Repro III ('C' supplement) the purpose of which is to update all HRC-I ObsIDs since Jan 2000 to the latest calibrations available for that configuration. Specifically, we are updating the DEGAP solution and the Gain Maps applied. For more information see the Repro IIIC web page at:

<http://asc.harvard.edu/cda/repro3.html#IIIC>

and the associated links.