

# V&V Reference Report

## L2 ASCDS Version : 7.6.8

Observation 4449 - L2 Version 001  
Chandra X-Ray Center

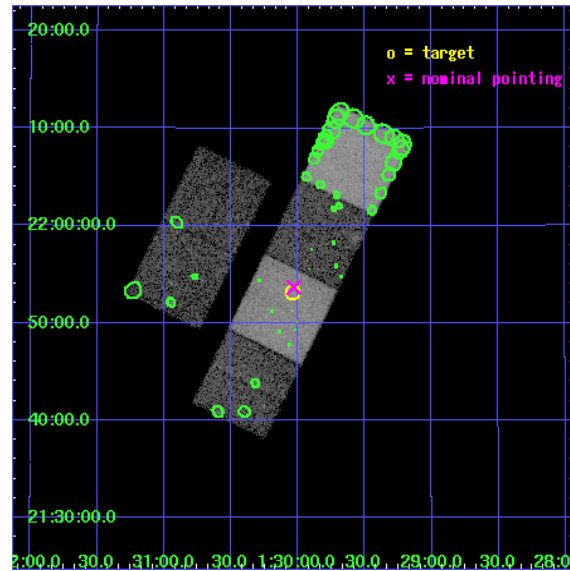
L2 Processing Date : Jul 11 2006

## Contents

<b>1</b>	<b>Front</b>	<b>2</b>
<b>2</b>	<b>OBI</b>	<b>3</b>
2.1	OBI . . . . .	3
2.1.1	Images . . . . .	3
2.1.2	Bias . . . . .	3
2.1.3	Parameters . . . . .	4
2.1.4	Events . . . . .	4
2.2	Compared Parameters . . . . .	5
2.3	Aspect . . . . .	6
2.4	Star Slots . . . . .	9
2.4.1	Slot 3 . . . . .	9
2.4.2	Slot 4 . . . . .	10
2.4.3	Slot 5 . . . . .	11
2.4.4	Slot 6 . . . . .	12
2.4.5	Slot 7 . . . . .	13
2.5	FID Slots . . . . .	14
2.5.1	Slot 0 . . . . .	14
2.5.2	Slot 1 . . . . .	15
2.5.3	Slot 2 . . . . .	16
<b>3</b>	<b>Point Sources</b>	<b>17</b>
<b>A</b>	<b>Summary</b>	<b>18</b>
A.1	Status . . . . .	18
A.2	Comments . . . . .	18

# 1 Front

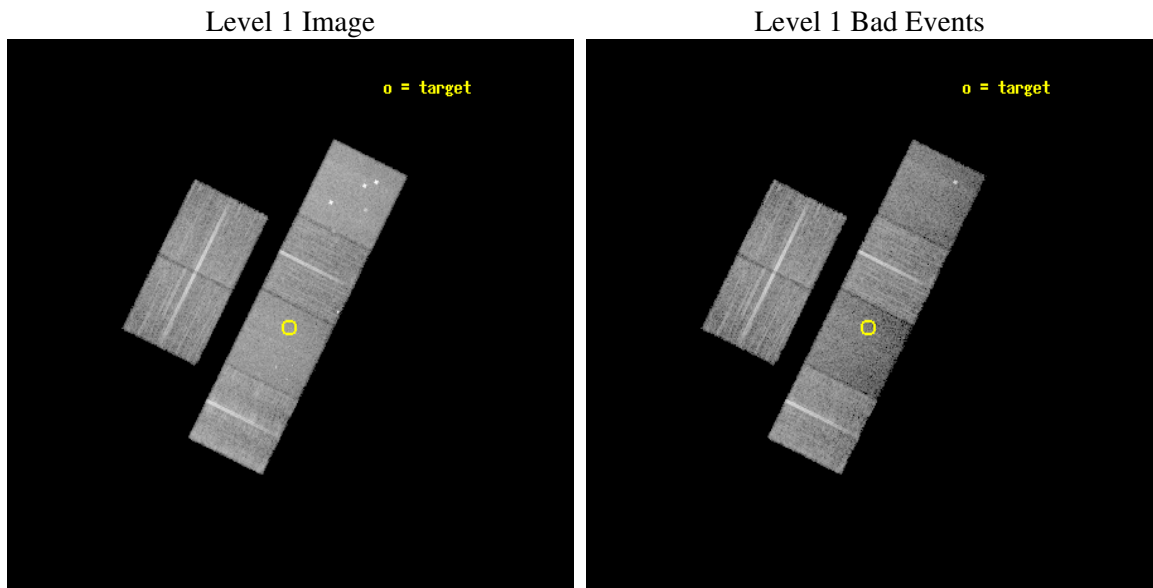
seq_num	500413
obs_id	4449
title	SN2002ic and its Circumstellar Medium
observer	Prof. John Hughes
object	SN 2002ic
dtcycle	0
cycle	P
ra_targ	22.510417
dec_targ	21.88525
ra_nom	22.507522928929
dec_nom	21.894478387182
roll_nom	116.27906606974
revision	2
ontime	18435.199931324
livedtime	18201.762329448
ontime2	18435.199931324
ontime3	18435.199931324
ontime5	18435.199931324
ontime6	18435.199931324
ontime7	18435.199931324
ontime8	18435.199931324
l2events	145702



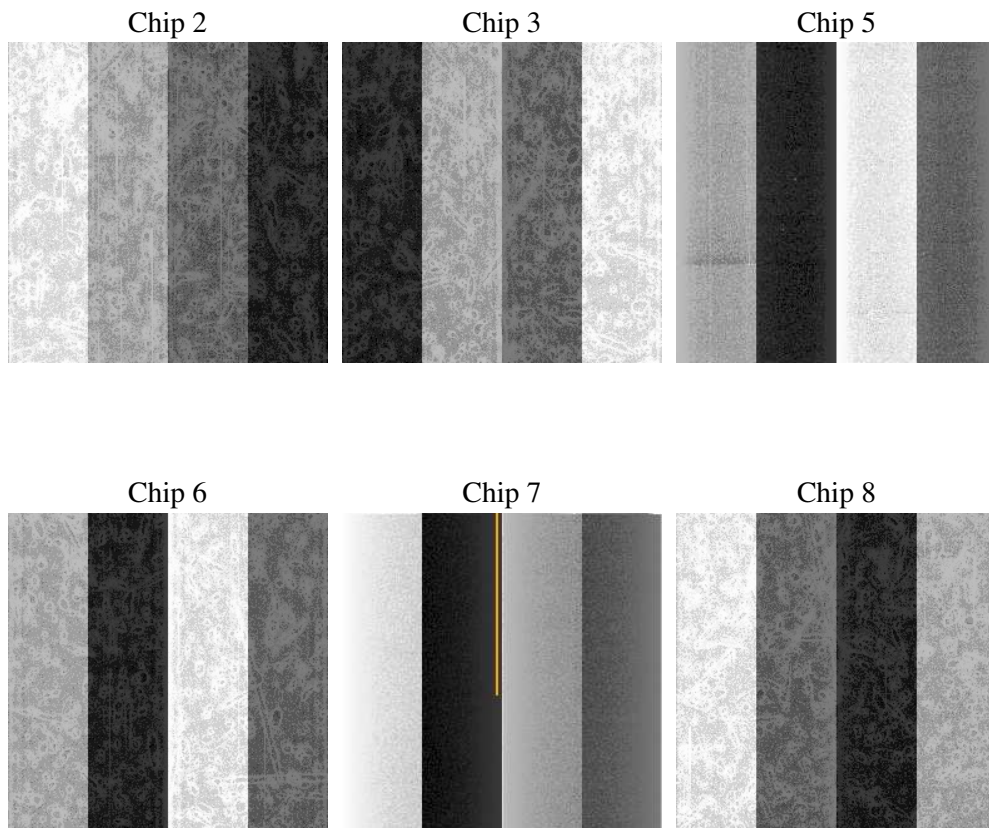
## 2 OBI

### 2.1 OBI

#### 2.1.1 Images



#### 2.1.2 Bias



### 2.1.3 Parameters

obi_num	0
ascdsver	7.6.8
caldsver	3.2.2
date	2006-07-11T04:02:23
revision	2

sched_exp_time	18283.436000
ontime	20022.909975797
ontime2	20022.909975797
ontime3	20022.909975797
ontime5	20022.909975797
ontime6	20022.909975797
ontime7	20022.909975797
ontime8	20022.909975797
l1events	655768

### 2.1.4 Events

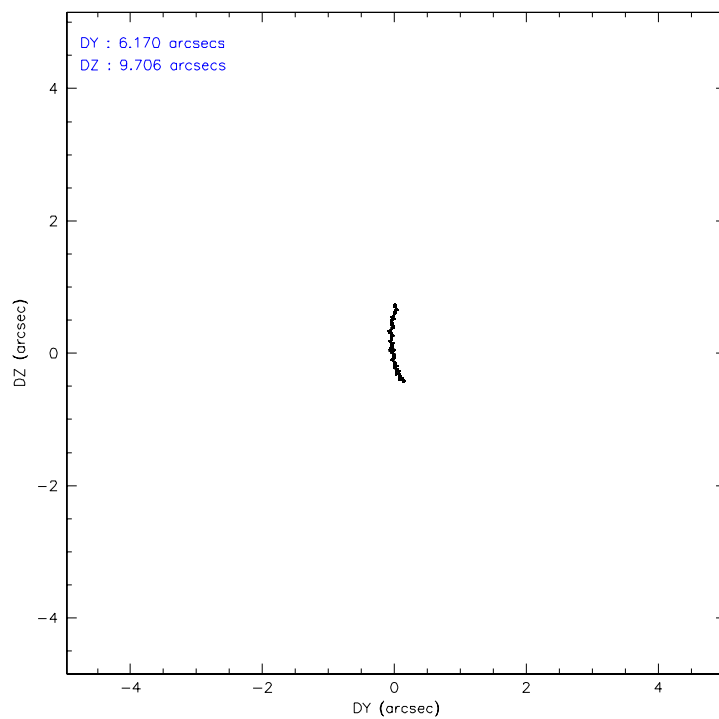
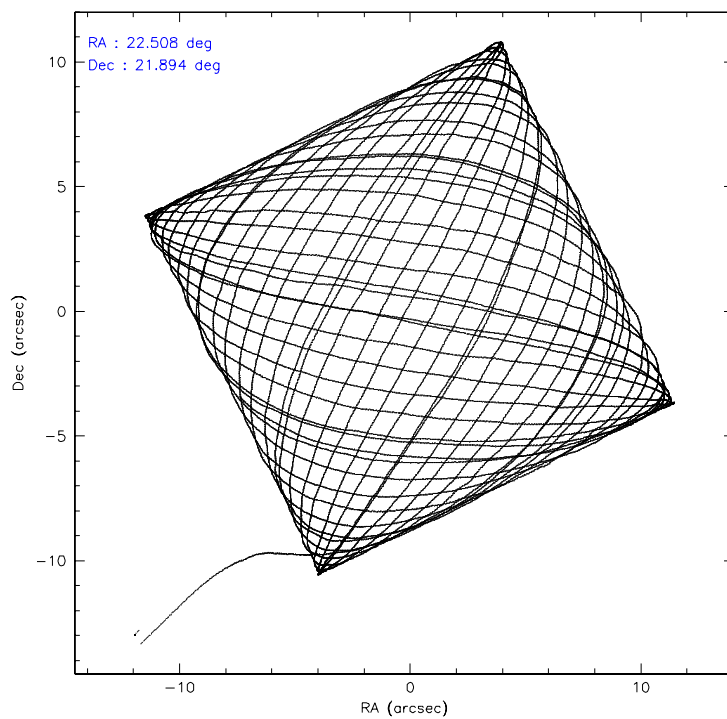
	ccd 2	ccd 3	ccd 5	ccd 6	ccd 7	ccd 8
level 1 events	102752	95636	132112	100510	102804	121954
rejected events	92841	86272	64592	88640	54013	95316
rejected %	90%	90%	48%	88%	52%	78%

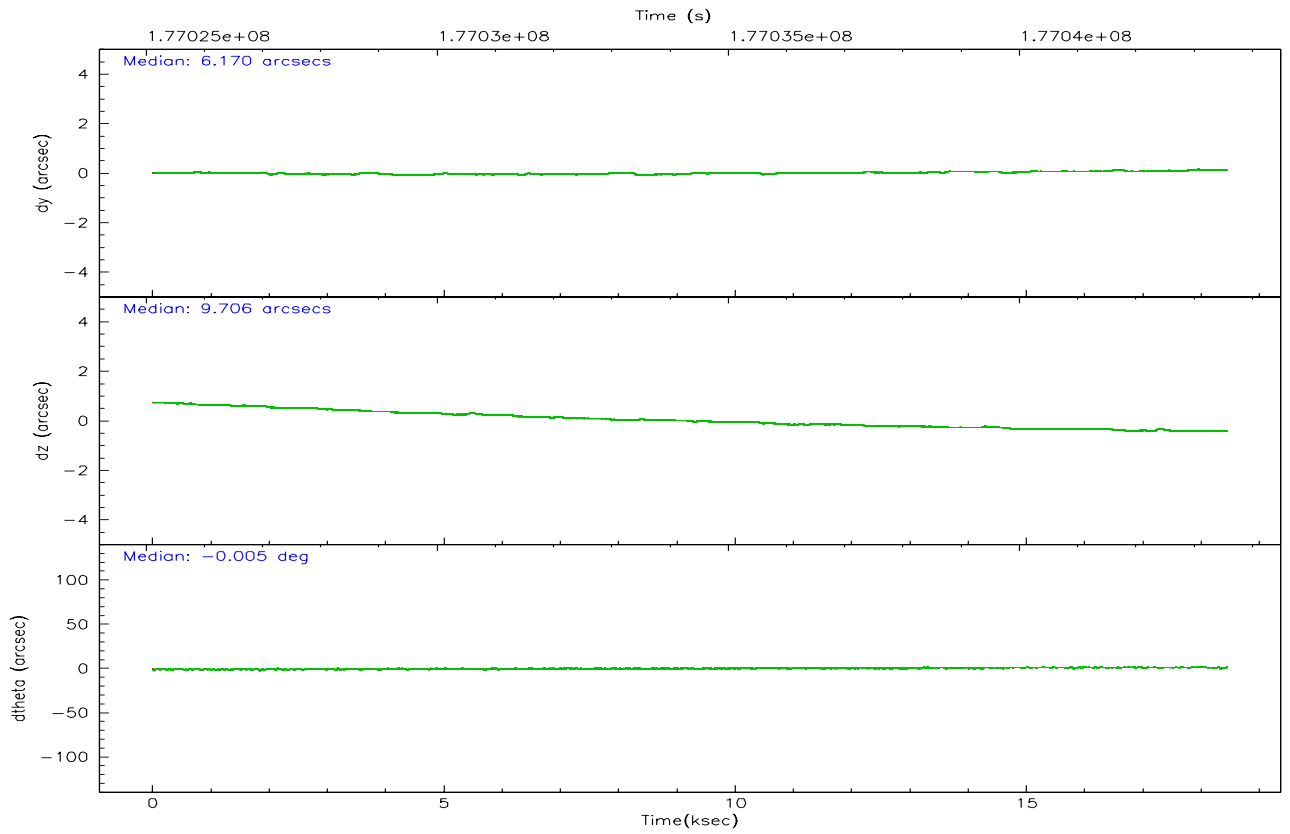
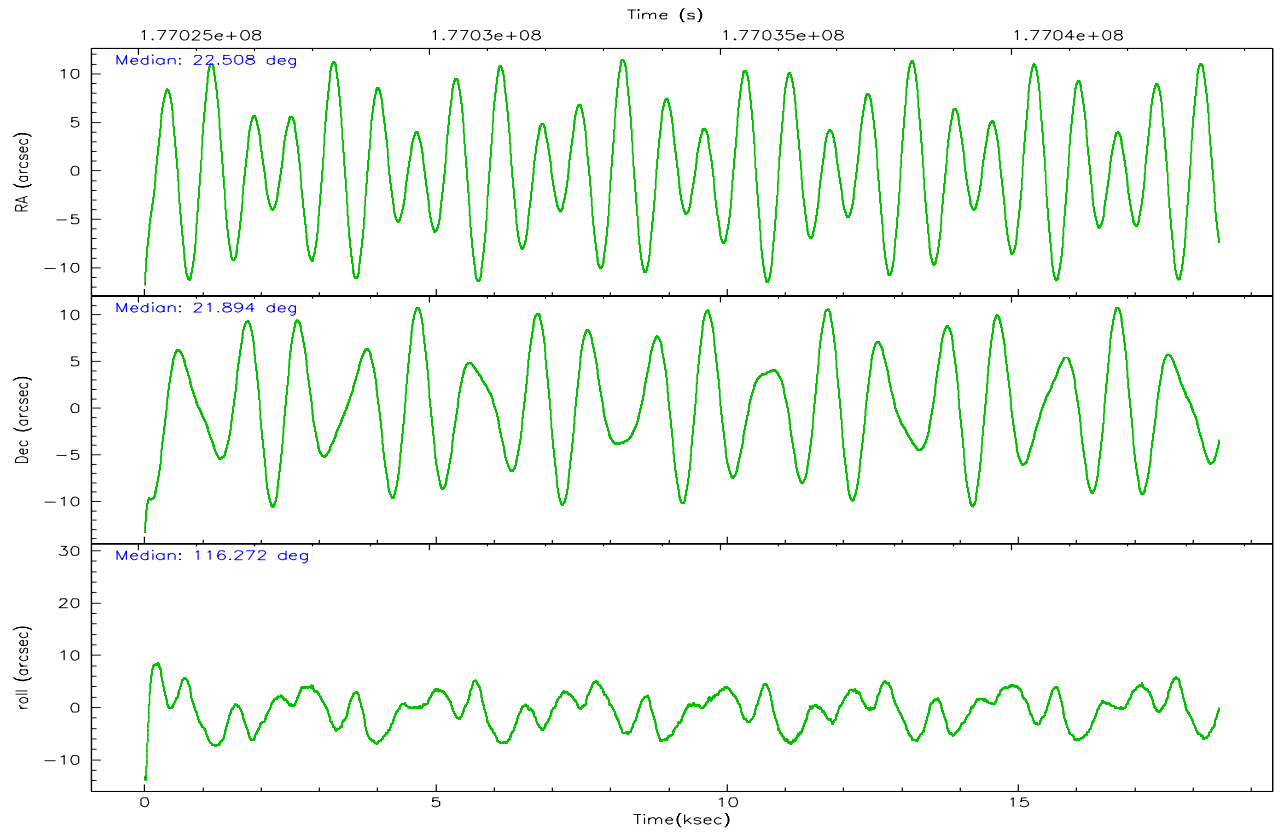
	ccd 2	ccd 3	ccd 5	ccd 6	ccd 7	ccd 8
grade 0 events	4548	4435	8680	6124	4058	9148
	4%	4%	6%	6%	3%	7%
grade 1 events	55	53	236	56	52	91
	0%	0%	0%	0%	0%	0%
grade 2 events	2334	1981	23476	2375	13053	6476
	2%	2%	17%	2%	12%	5%
grade 3 events	1125	1051	2260	1185	3328	2990
	1%	1%	1%	1%	3%	2%
grade 4 events	1139	1039	2244	1197	3225	2916
	1%	1%	1%	1%	3%	2%
grade 5 events	2758	3012	6940	3218	7239	4839
	2%	3%	5%	3%	7%	3%
grade 6 events	1628	1678	37257	1979	29629	7546
	1%	1%	28%	1%	28%	6%
grade 7 events	89165	82387	51019	84376	42220	87948
	86%	86%	38%	83%	41%	72%

## 2.2 Compared Parameters

Parameter	Planned	Actual	Parameter	Planned	Actual
Instrument	ACIS	ACIS	Obspar format version number	6	6
Detector	ACIS-235678	ACIS-235678	Obspar file type	PREDICTED	ACTUAL
Grating	NONE	NONE	Obspar update status	NONE	UPDATED
Data mode	VFAINT	VFAINT	On-chip summing requested	N	N
Observation mode	POINTING	POINTING	Subarray requested	NONE	NONE
Pointing RA	22.532138	22.50752292892879	Alternating exposures requested	N	N
Pointing Dec	21.879720	21.89447838718192	Primary exposure time	0.000000	3.2
Pointing Roll	116.113275	116.2790660697403			
SIM focus pos (mm)	-0.684267	-0.6828225247311905			
SIM defocus (mm)	0	0.001444936568705701			
SIM translation stage pos (mm)	-190.132523	-190.1425803651734			
SIM translation stage offset (mm)	0	0.01005778216563158			
Observation start time	177025283.184000	177023435.21864			
Observation start date	2003-08-11T21:40:19	2003-08-11T21:10:35			
Observation end time	177043566.184000	177043880.89451			
Observation end date	2003-08-12T02:45:02	2003-08-12T02:51:20			
Read mode	TIMED	TIMED			

## 2.3 Aspect



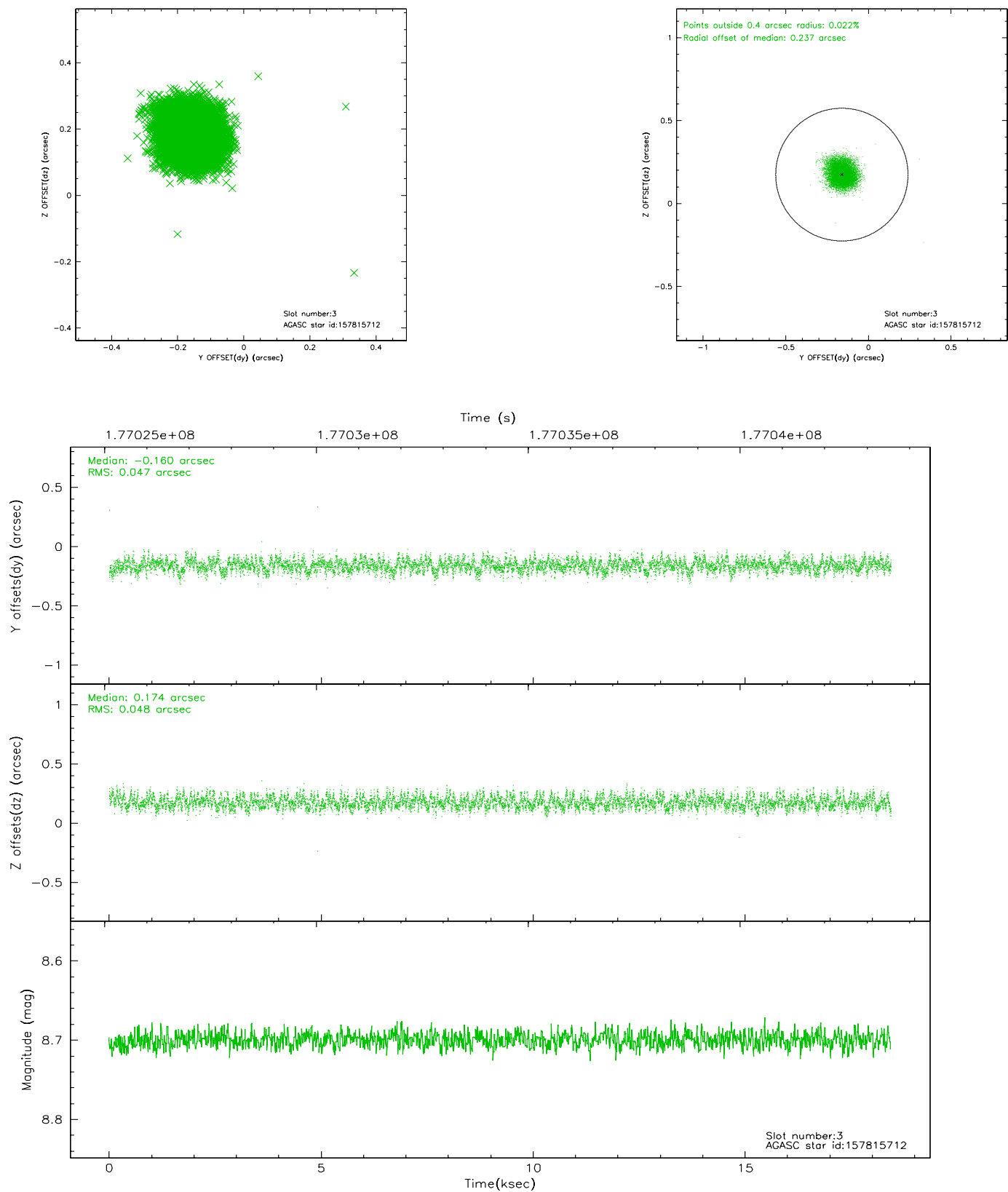


### Slot Statistics

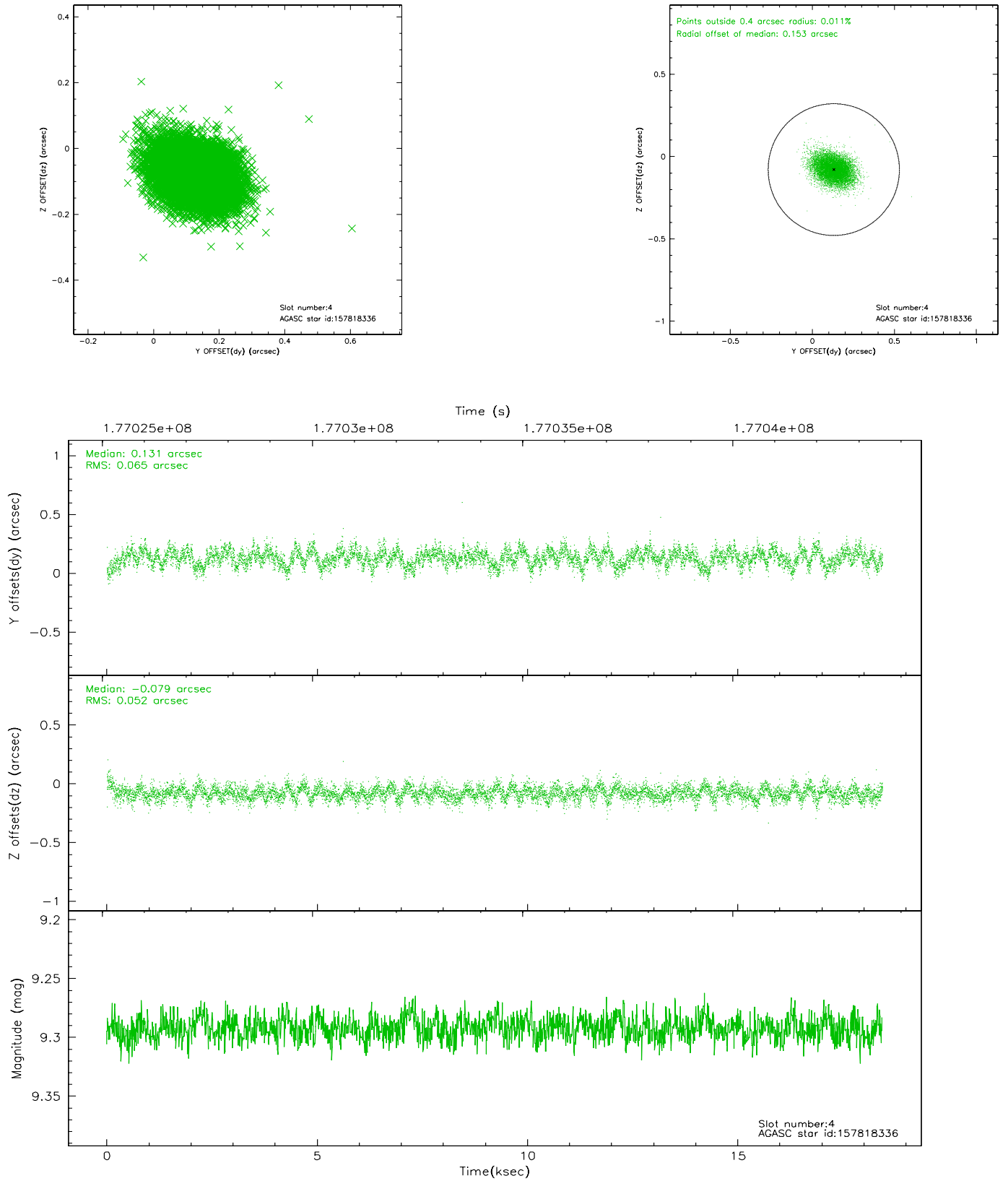
slot	status	id	mag	n_pts	med_dy	med_dz	dr1	dr2	ra	dec	mean_y	mean_z
0	FID	ACIS-S-2	7.10	4498	-0.046	-0.002	0.011	0.017	0.000000	0.000000	-758.93	-1730.95
1	FID	ACIS-S-4	7.20	4498	0.025	0.022	0.005	0.009	0.000000	0.000000	2154.29	177.37
2	FID	ACIS-S-5	7.23	4498	-0.010	-0.012	0.011	0.017	0.000000	0.000000	-1811.48	171.21
3	GUIDE	157815712	8.70	8993	-0.160	0.174	0.072	0.112	22.528658	22.348362	1520.24	-732.06
4	GUIDE	157818336	9.29	8991	0.131	-0.079	0.088	0.146	22.263608	21.605475	-489.72	1241.12
5	GUIDE	157818560	8.81	8990	-0.080	-0.272	0.073	0.116	21.901161	21.708153	378.17	2165.04
6	GUIDE	157818840	9.68	8992	-0.050	0.442	0.110	0.176	23.168703	22.070919	-312.09	-2211.06
7	GUIDE	157819968	9.98	8888	0.163	-0.271	0.140	0.220	22.173002	21.133467	-1880.17	2264.08

## 2.4 Star Slots

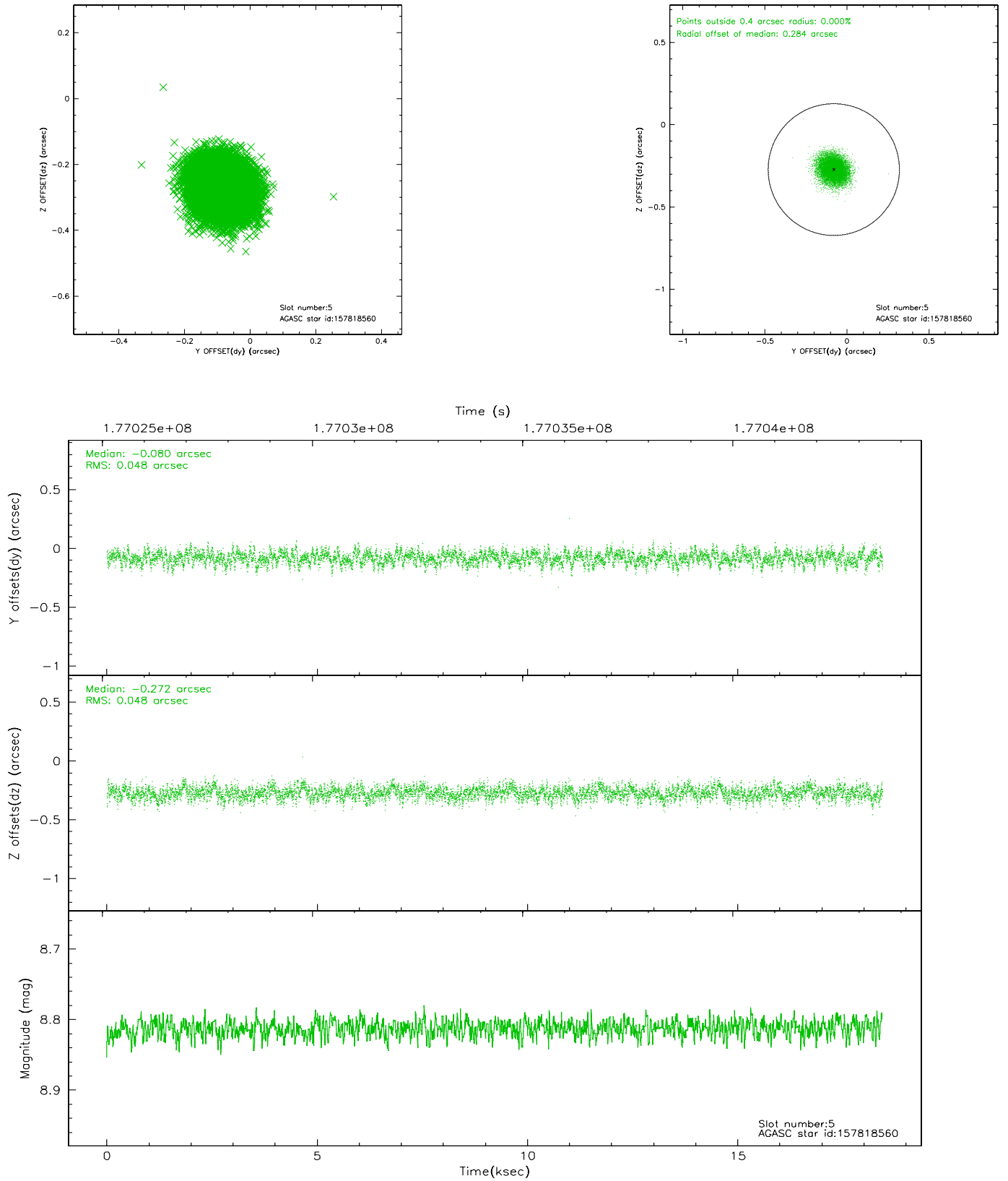
### 2.4.1 Slot 3



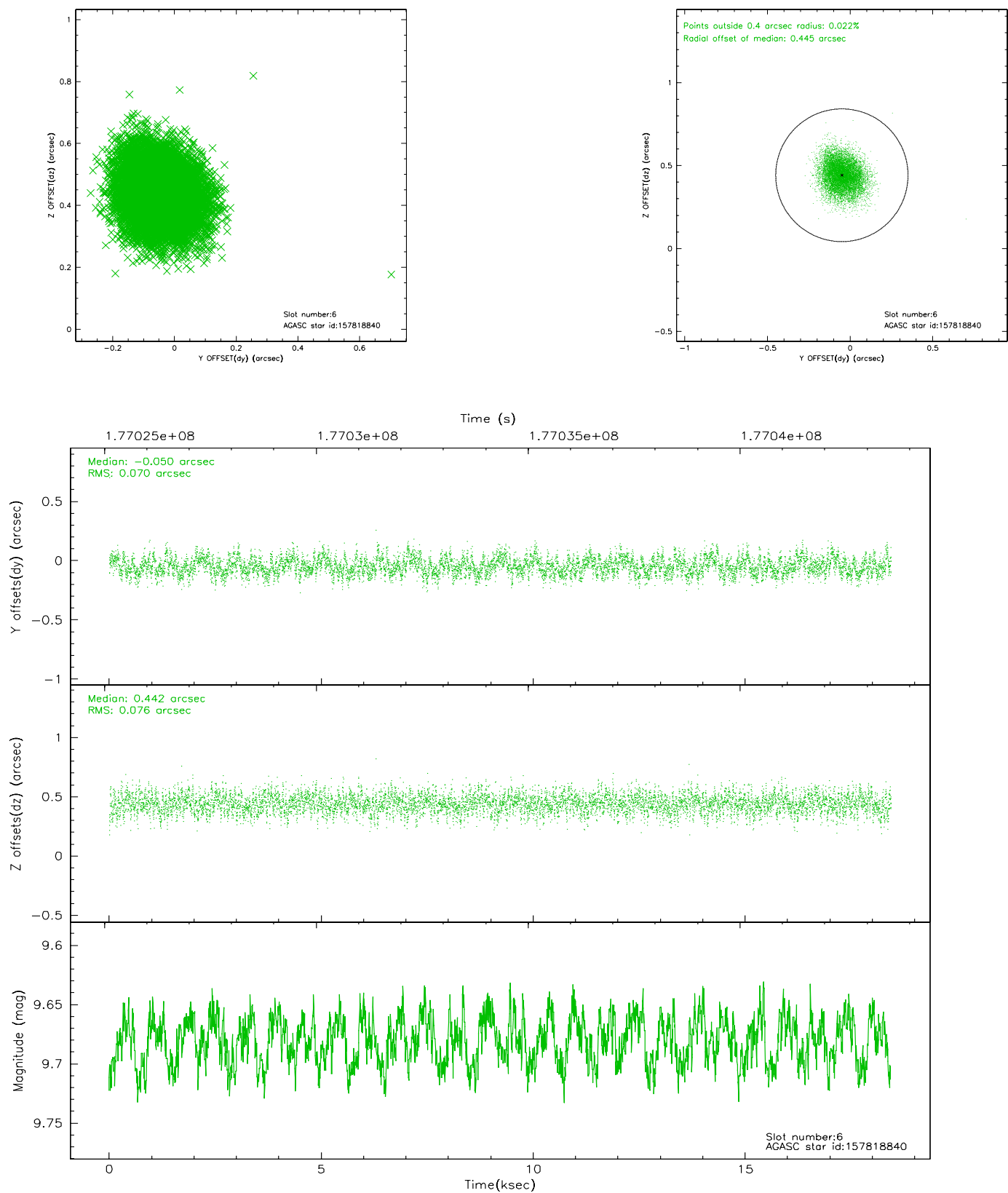
## 2.4.2 Slot 4



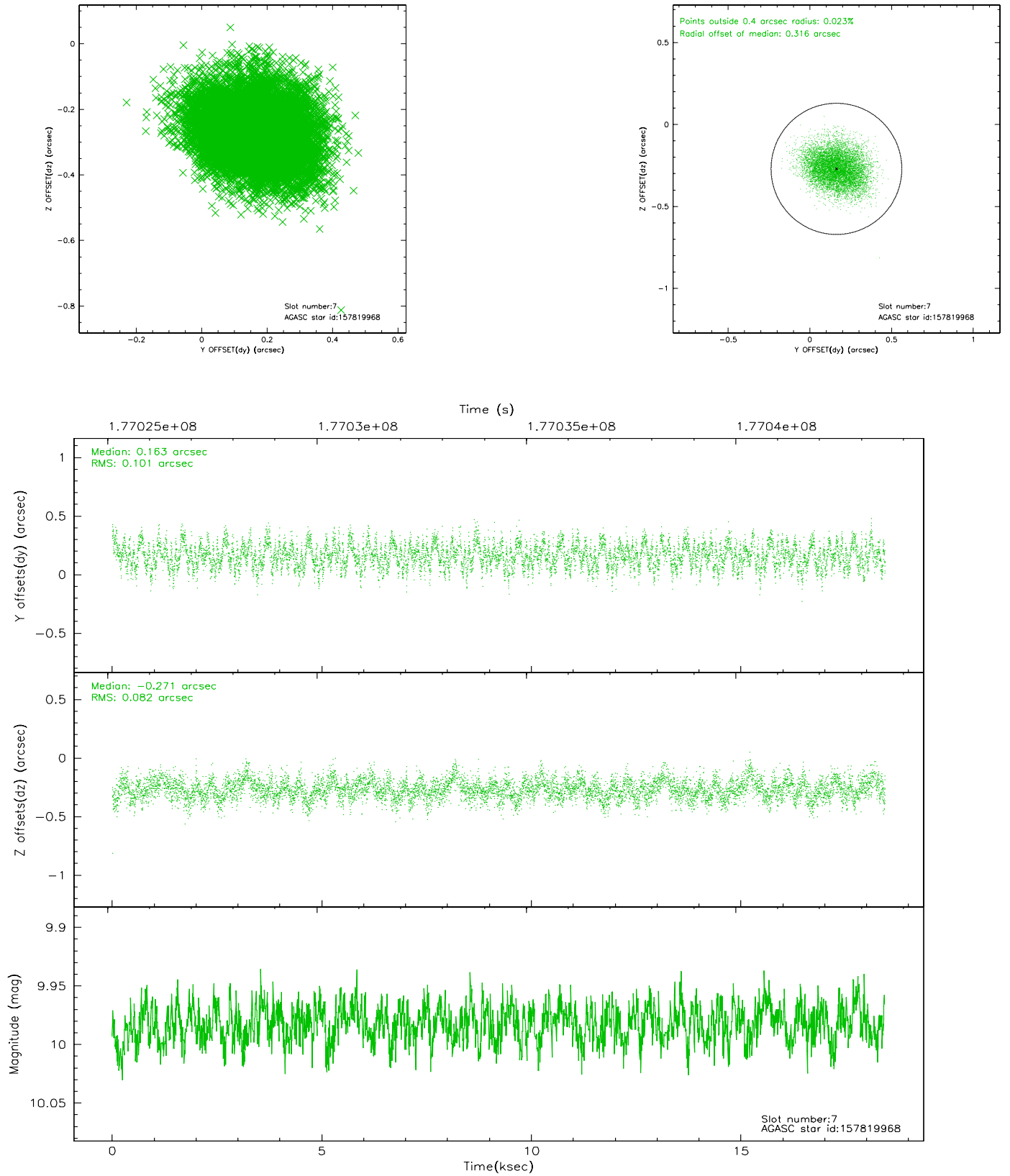
### 2.4.3 Slot 5



## 2.4.4 Slot 6

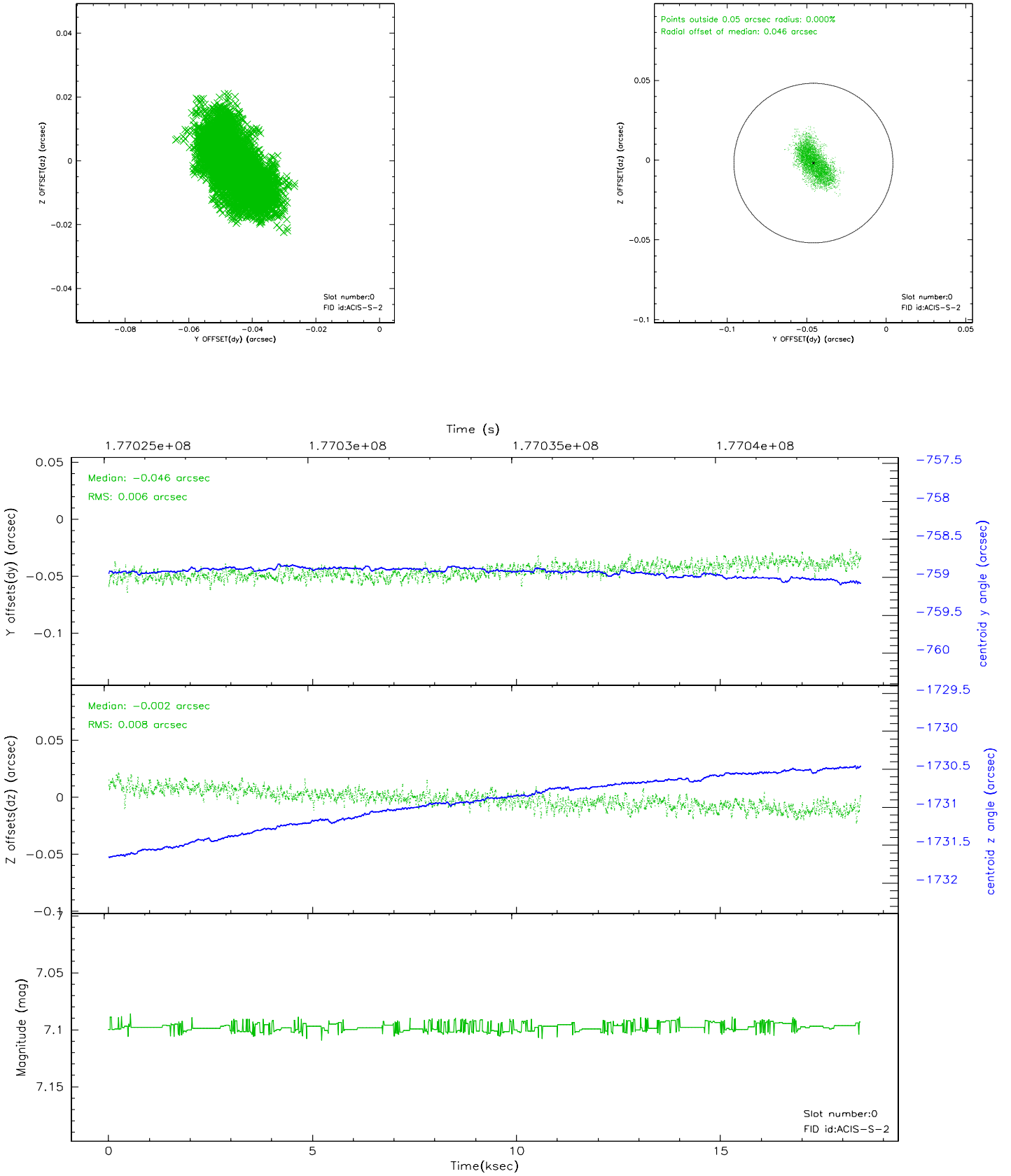


## 2.4.5 Slot 7

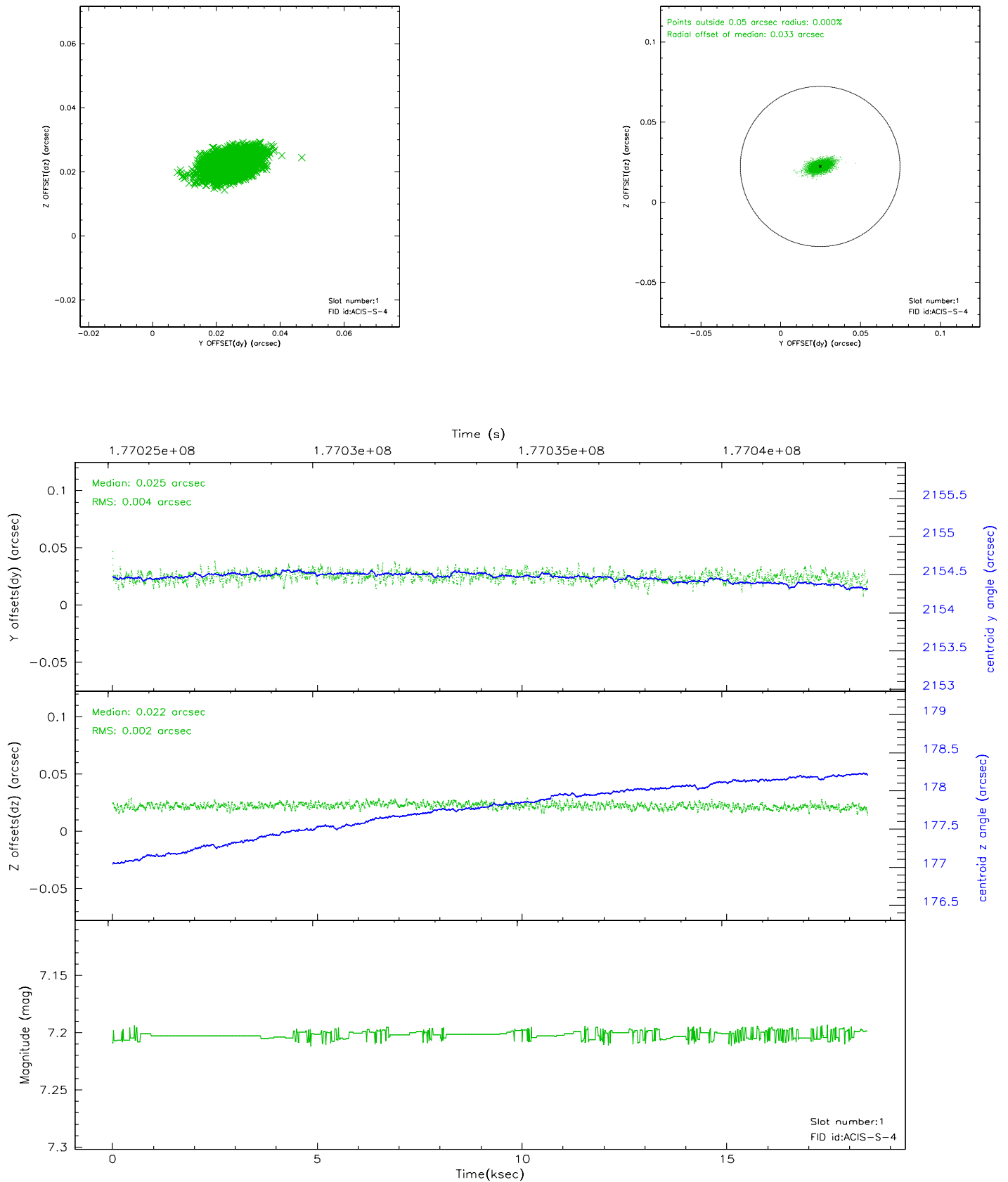


## 2.5 FID Slots

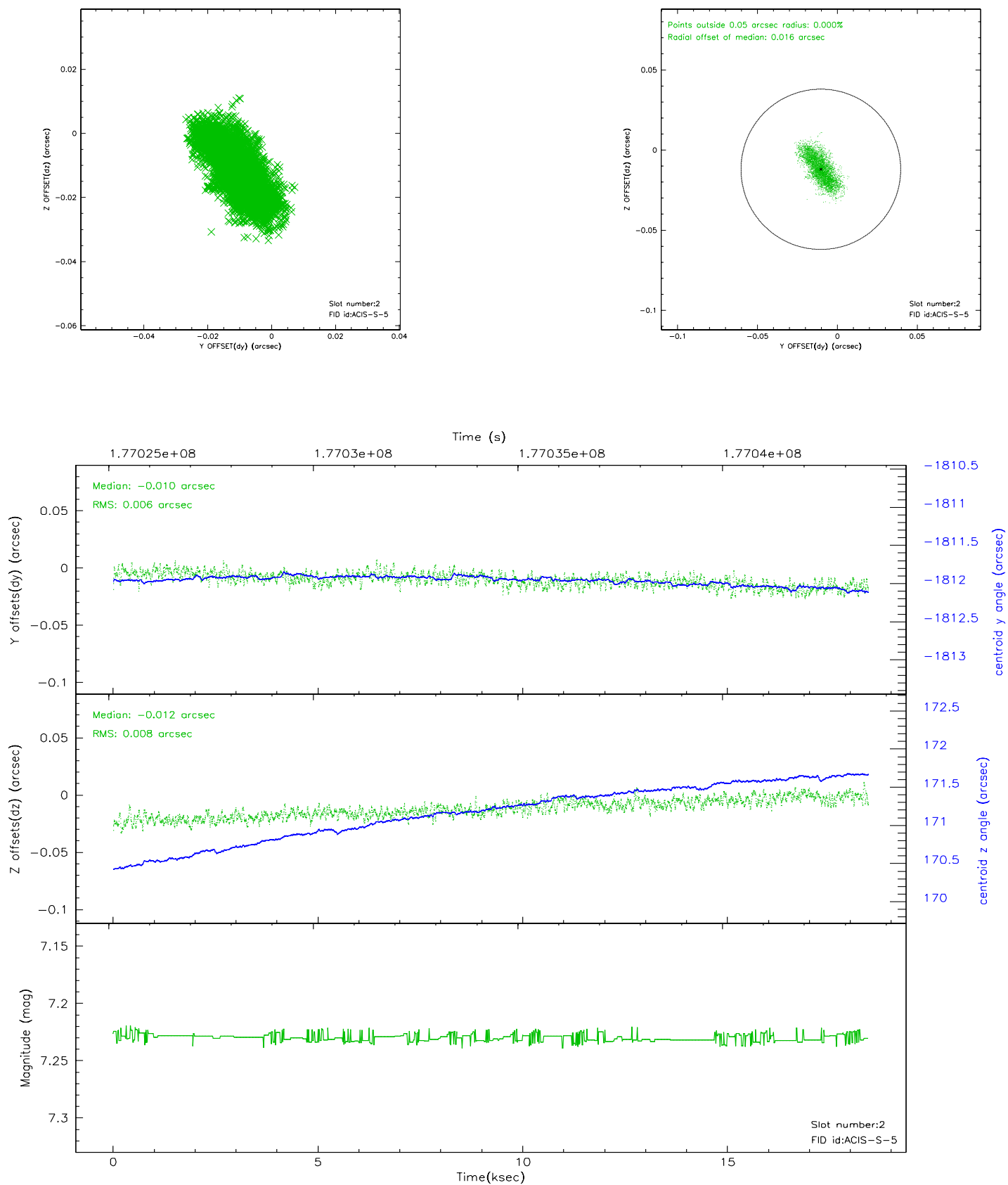
### 2.5.1 Slot 0



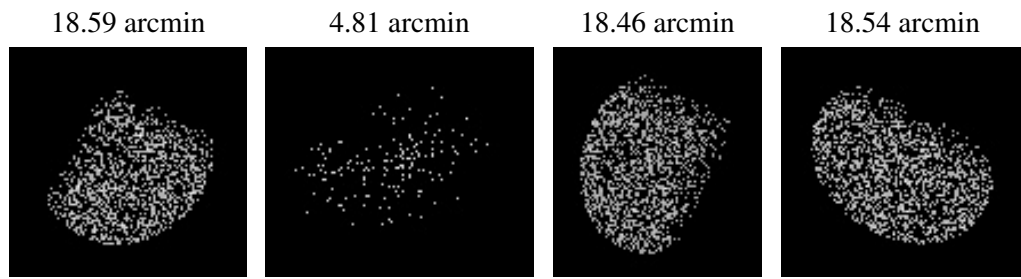
## 2.5.2 Slot 1



### 2.5.3 Slot 2



### 3 Point Sources



## A Summary

### A.1 Status

V&V Scientist	Beth Sundheim
V&V Date (YYYY-MM-DD)	2006.07.11
V&V Edition	1
V&V Disposition and Status	OK
V&V Charge Time	18.435

### A.2 Comments