

# V&V Reference Report

## L2 ASCDS Version : 7.6.8.1

Observation 4394 - L2 Version 001  
Chandra X-Ray Center

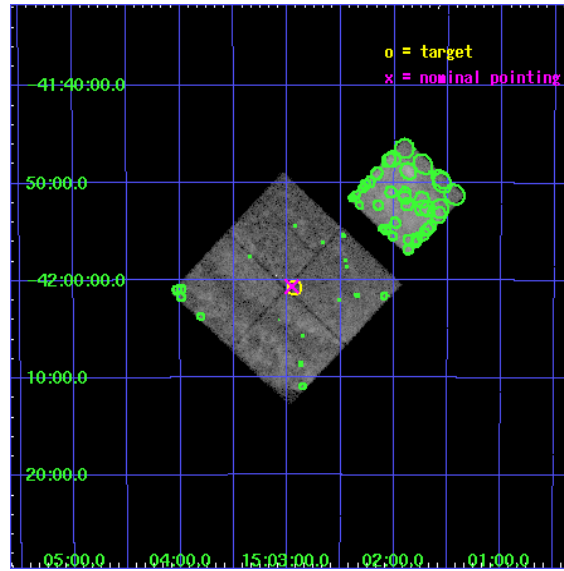
L2 Processing Date : Aug 4 2006

## Contents

<b>1</b>	<b>Front</b>	<b>2</b>
<b>2</b>	<b>OBI</b>	<b>3</b>
2.1	OBI . . . . .	3
2.1.1	Images . . . . .	3
2.1.2	Bias . . . . .	3
2.1.3	Parameters . . . . .	4
2.1.4	Events . . . . .	4
2.2	Compared Parameters . . . . .	5
2.3	Aspect . . . . .	6
2.4	Star Slots . . . . .	9
2.4.1	Slot 3 . . . . .	9
2.4.2	Slot 4 . . . . .	10
2.4.3	Slot 5 . . . . .	11
2.4.4	Slot 6 . . . . .	12
2.4.5	Slot 7 . . . . .	13
2.5	FID Slots . . . . .	14
2.5.1	Slot 0 . . . . .	14
2.5.2	Slot 1 . . . . .	15
2.5.3	Slot 2 . . . . .	16
<b>3</b>	<b>Point Sources</b>	<b>17</b>
<b>A</b>	<b>Summary</b>	<b>18</b>
A.1	Status . . . . .	18
A.2	Comments . . . . .	18

# 1 Front

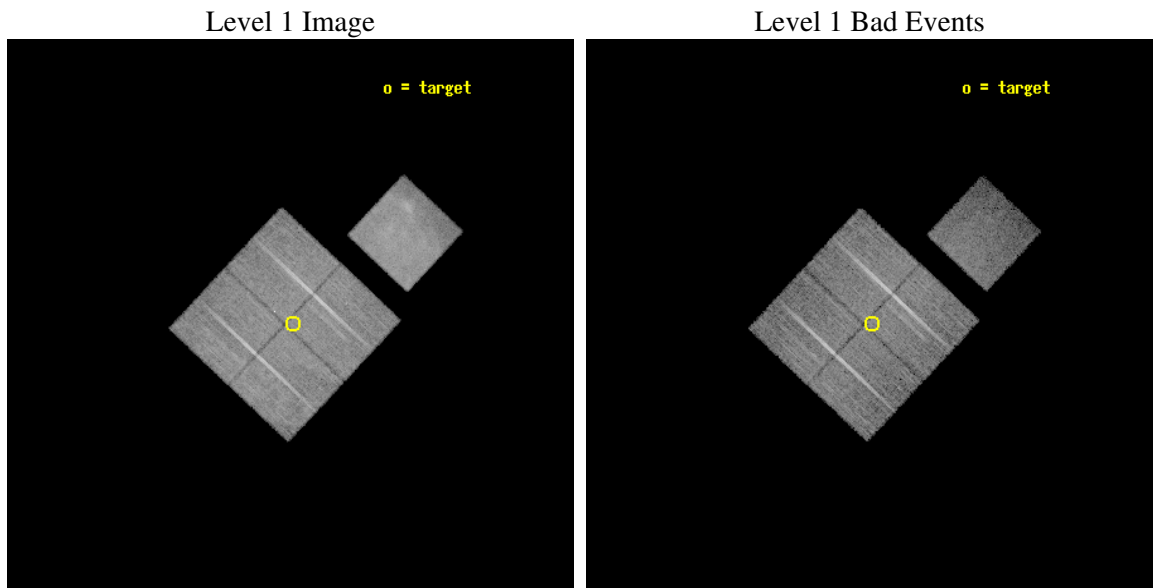
seq_num	500317
obs_id	4394
title	STUDYING HIGH MACH NUMBER SHOCKS IN YOUNG SUPERNOVA REMNANTS WITH CHANDRA
observer	Prof. John Hughes
object	SN1006
dtcycle	0
cycle	P
ra_targ	225.733292
dec_targ	-42.0125
ra_nom	225.73913612929
dec_nom	-42.010923265248
roll_nom	43.212599482638
revision	2
ontime	19849.299961835
livetime	19589.954244992
ontime0	19839.877001226
ontime1	19849.299961835
ontime2	19843.018081009
ontime3	19849.299961835
ontime7	19849.299961835
l2events	199432



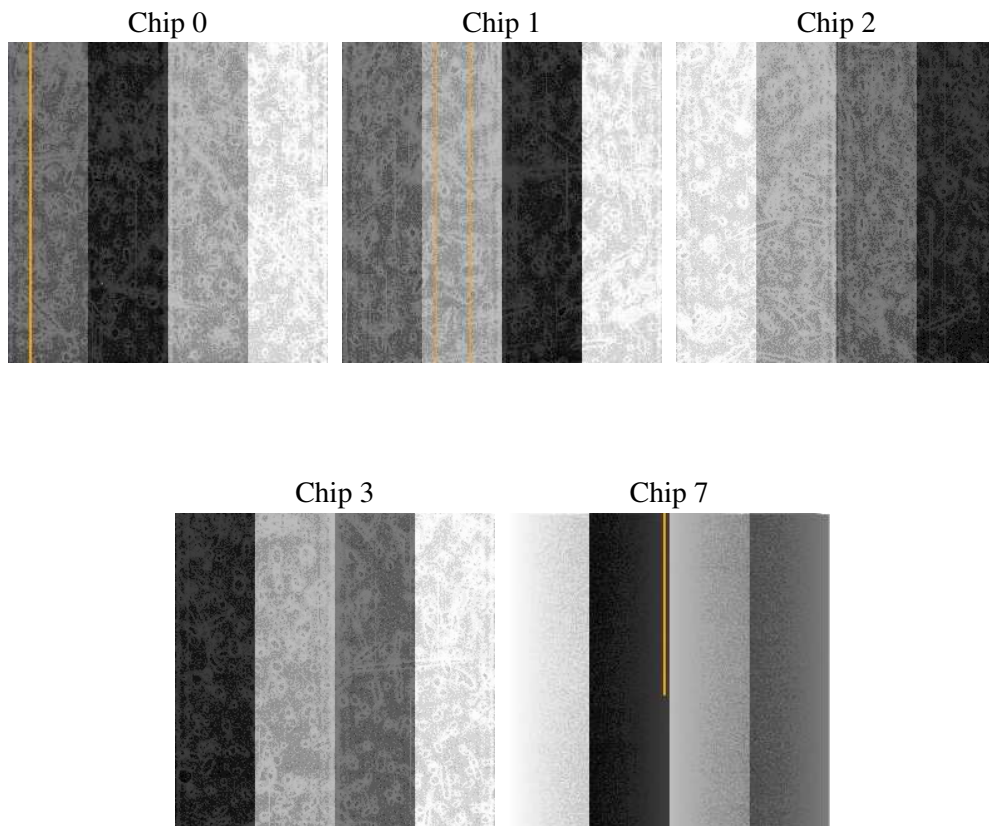
## 2 OBI

### 2.1 OBI

#### 2.1.1 Images



#### 2.1.2 Bias



### 2.1.3 Parameters

obi_num	0
ascdsver	7.6.8.1
caldbver	3.2.2
date	2006-08-04T16:43:54
revision	2

sched_exp_time	20074.000000
ontime	19854.330648333
ontime0	19844.907687724
ontime1	19854.330648333
ontime2	19848.048747569
ontime3	19854.330648333
ontime7	19854.330628395
l1events	597754

### 2.1.4 Events

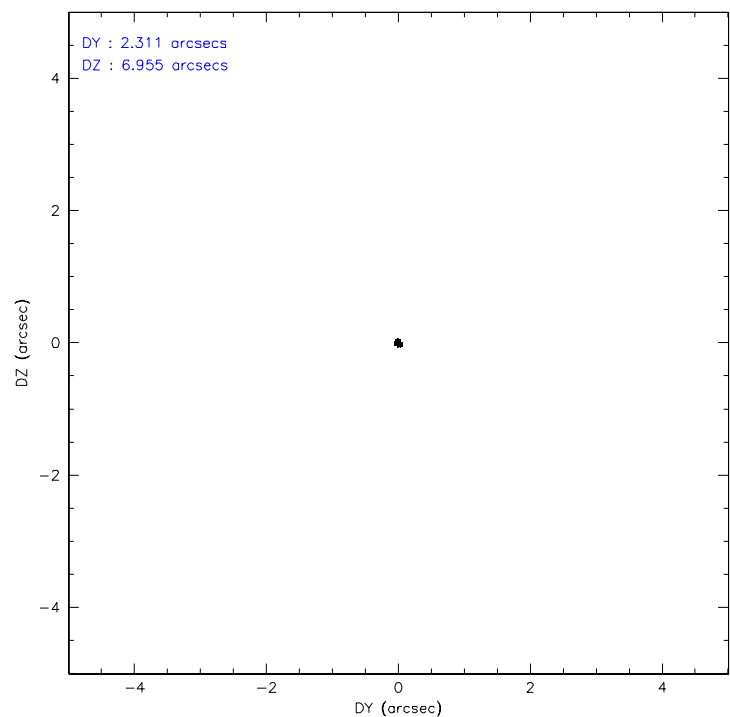
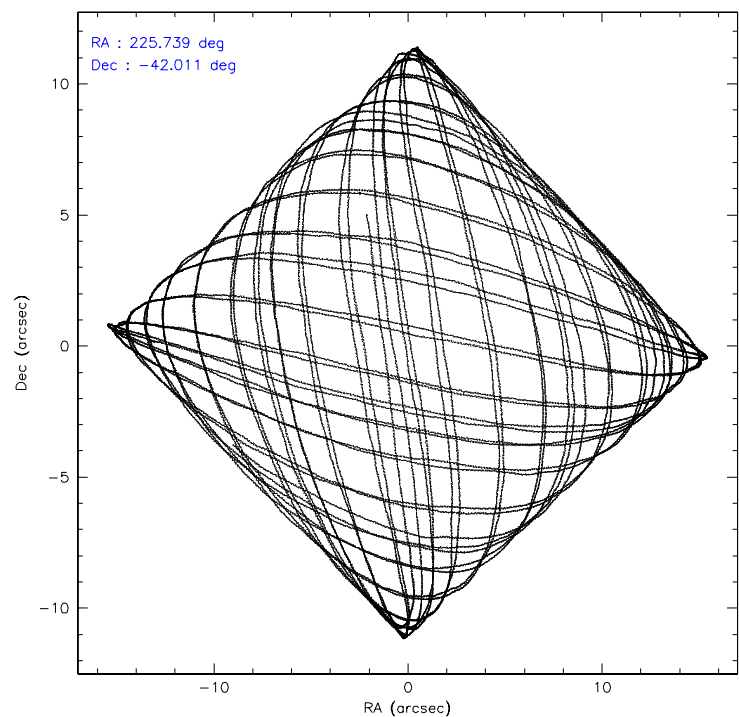
	ccd 0	ccd 1	ccd 2	ccd 3	ccd 7
level 1 events	113707	118611	115306	118962	131168
rejected events	79237	79528	88327	87754	50968
rejected %	69%	67%	76%	73%	38%

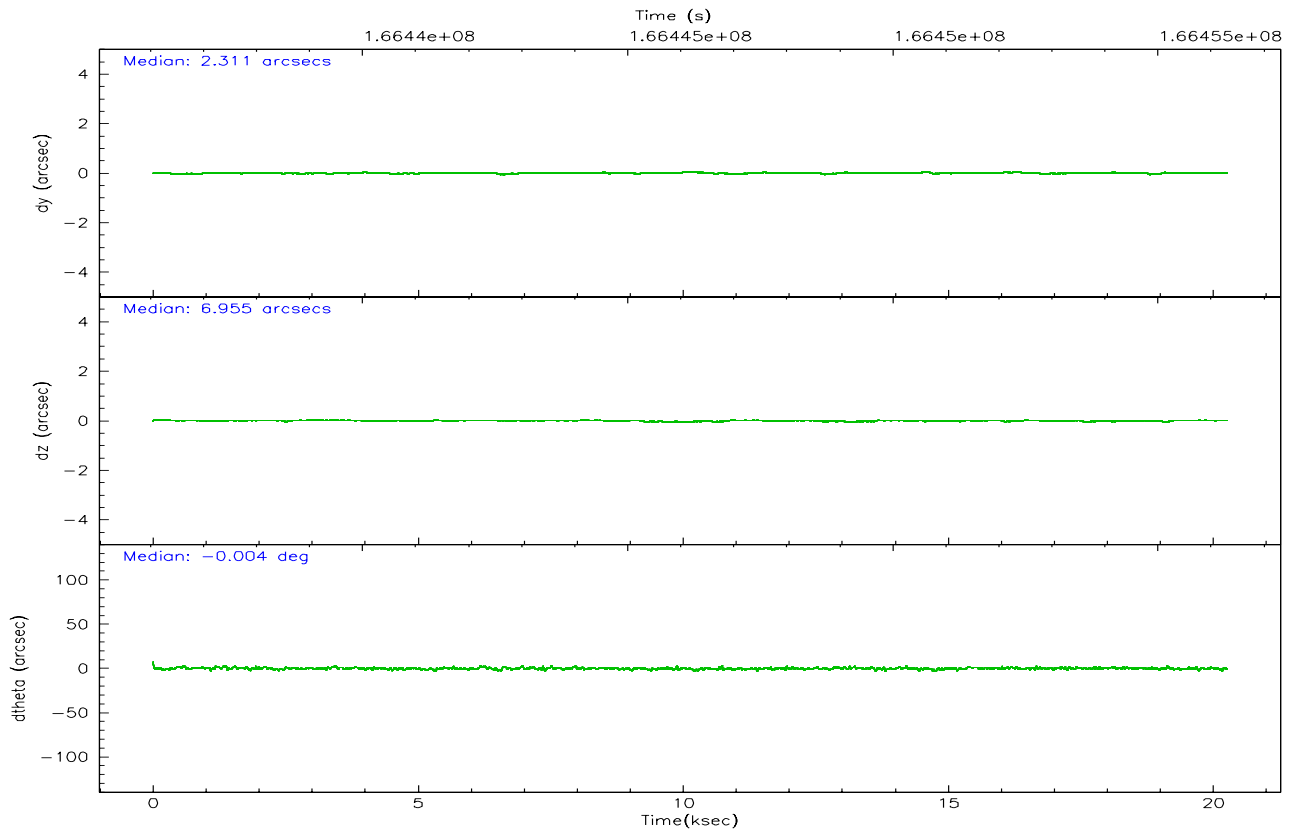
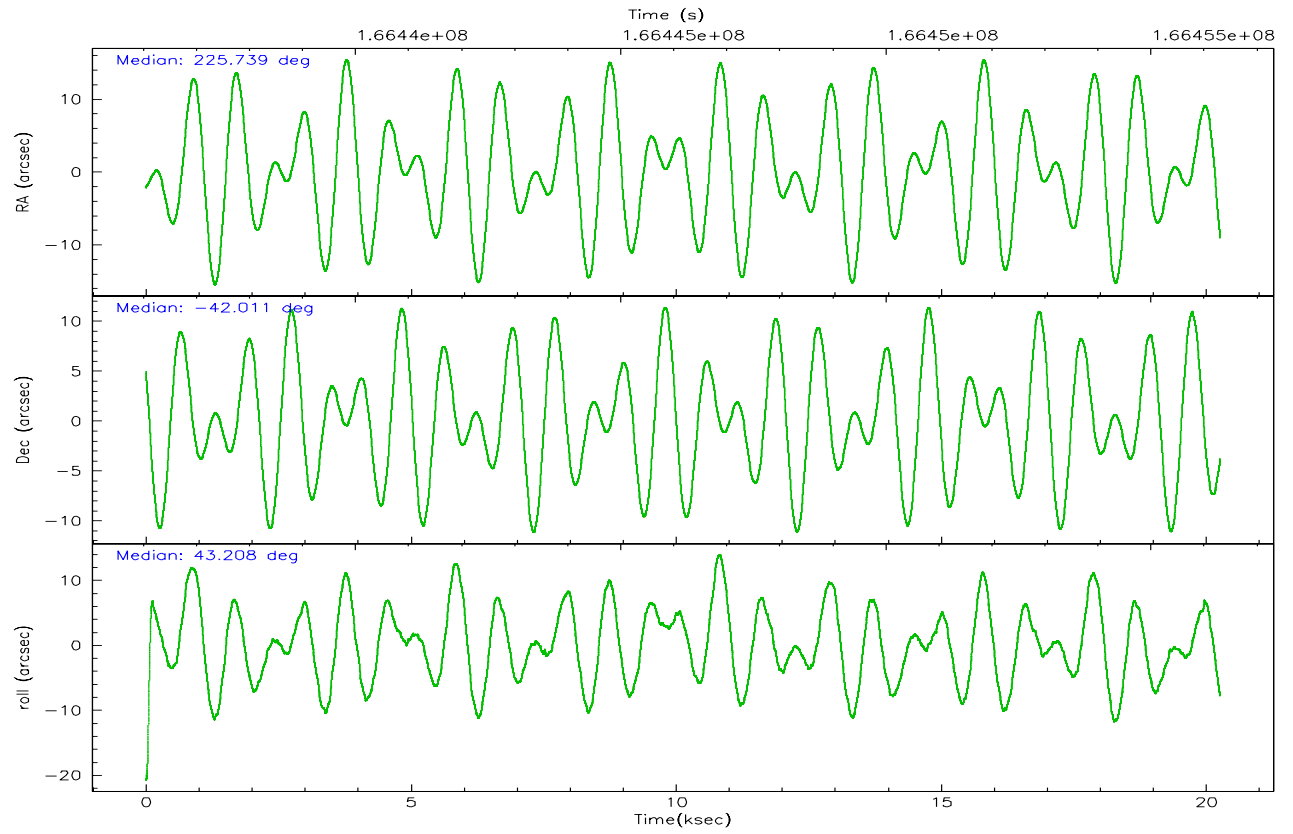
	ccd 0	ccd 1	ccd 2	ccd 3	ccd 7
grade 0 events	26023	29662	19652	23516	17832
	22%	25%	17%	19%	13%
grade 1 events	123	124	98	105	53
	0%	0%	0%	0%	0%
grade 2 events	3666	3978	3104	3205	21218
	3%	3%	2%	2%	16%
grade 3 events	1555	1613	1239	1325	6955
	1%	1%	1%	1%	5%
grade 4 events	1369	1618	1259	1319	6714
	1%	1%	1%	1%	5%
grade 5 events	2960	3265	2753	3325	7490
	2%	2%	2%	2%	5%
grade 6 events	1862	2217	1731	1849	27503
	1%	1%	1%	1%	20%
grade 7 events	76149	76134	85470	84318	43403
	66%	64%	74%	70%	33%

## 2.2 Compared Parameters

Parameter	Planned	Actual	Parameter	Planned	Actual
Instrument	ACIS	ACIS	Obspar format version number	6	6
Detector	ACIS-01237	ACIS-01237	Obspar file type	PREDICTED	ACTUAL
Grating	NONE	NONE	Obspar update status	NONE	UPDATED
Data mode	VFAINT	VFAINT	On-chip summing requested	N	N
Observation mode	POINTING	POINTING	Subarray requested	NONE	NONE
Pointing RA	225.728644	225.7391361292894	Alternating exposures requested	N	N
Pointing Dec	-42.037143	-42.01092326524825	Primary exposure time	0.000000	3.1
Pointing Roll	42.996894	43.21259948263803			
SIM focus pos (mm)	-0.782348	-0.7809083437167272			
SIM defocus (mm)	0	0.001439871863259334			
SIM translation stage pos (mm)	-233.592463	-233.5874344608287			
SIM translation stage offset (mm)	0	-0.005018542100998502			
Observation start time	166436233.184000	166435857.16905			
Observation start date	2003-04-11T08:16:09	2003-04-11T08:10:57			
Observation end time	166456307.184000	166457216.11996			
Observation end date	2003-04-11T13:50:43	2003-04-11T14:06:56			
Read mode	TIMED	TIMED			

## 2.3 Aspect





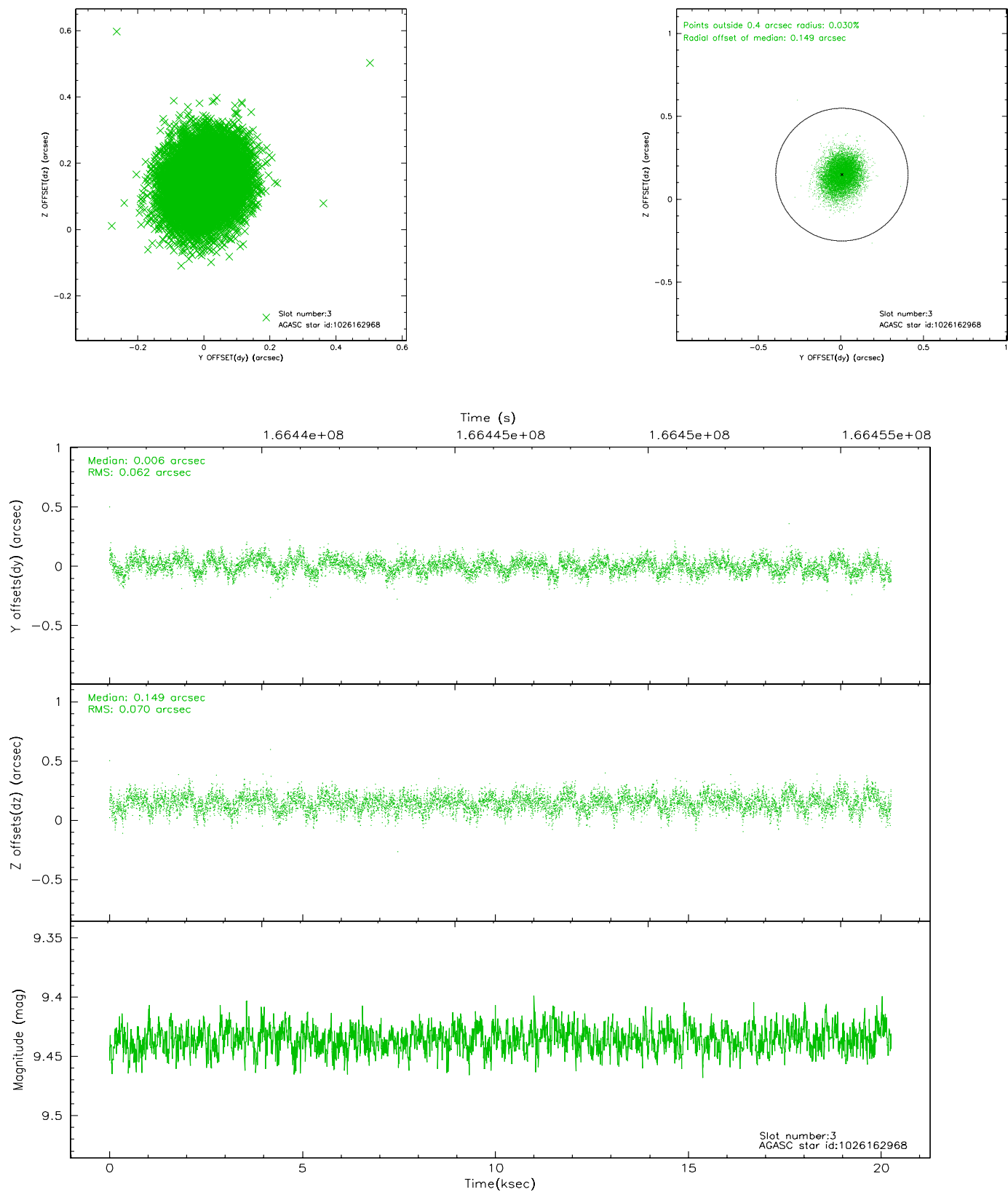
### Slot Statistics

slot	status	id	mag	n_pts	med_dy	med_dz	dr1	dr2	ra	dec	mean_y	mean_z
0	FID	ACIS-I-1	7.25	4942	-0.085	0.015	0.009	0.015	0.000000	0.000000	937.45	-830.30
1	FID	ACIS-I-2	7.16	4941	-0.024	-0.005	0.006	0.011	0.000000	0.000000	-756.48	-836.91
2	FID	ACIS-I-4	7.17	4942	0.010	0.057	0.007	0.013	0.000000	0.000000	2157.29	1069.49
3	GUIDE	1026162968	9.44	9873	0.006	0.149	0.101	0.159	225.835985	-42.679852	-1369.81	-1885.96
4	GUIDE	1026163728	9.22	9877	-0.117	-0.164	0.102	0.159	225.377558	-41.568164	458.29	1878.10
5	GUIDE	1026170368	9.30	9876	0.057	-0.026	0.079	0.129	225.763429	-42.291155	-555.35	-731.72
6	GUIDE	1026170800	9.02	9879	0.103	0.022	0.085	0.131	225.400024	-42.381702	-1485.82	-312.52
7	GUIDE	1026185256	9.32	9878	-0.044	0.019	0.086	0.137	226.095983	-42.018643	762.76	-622.62

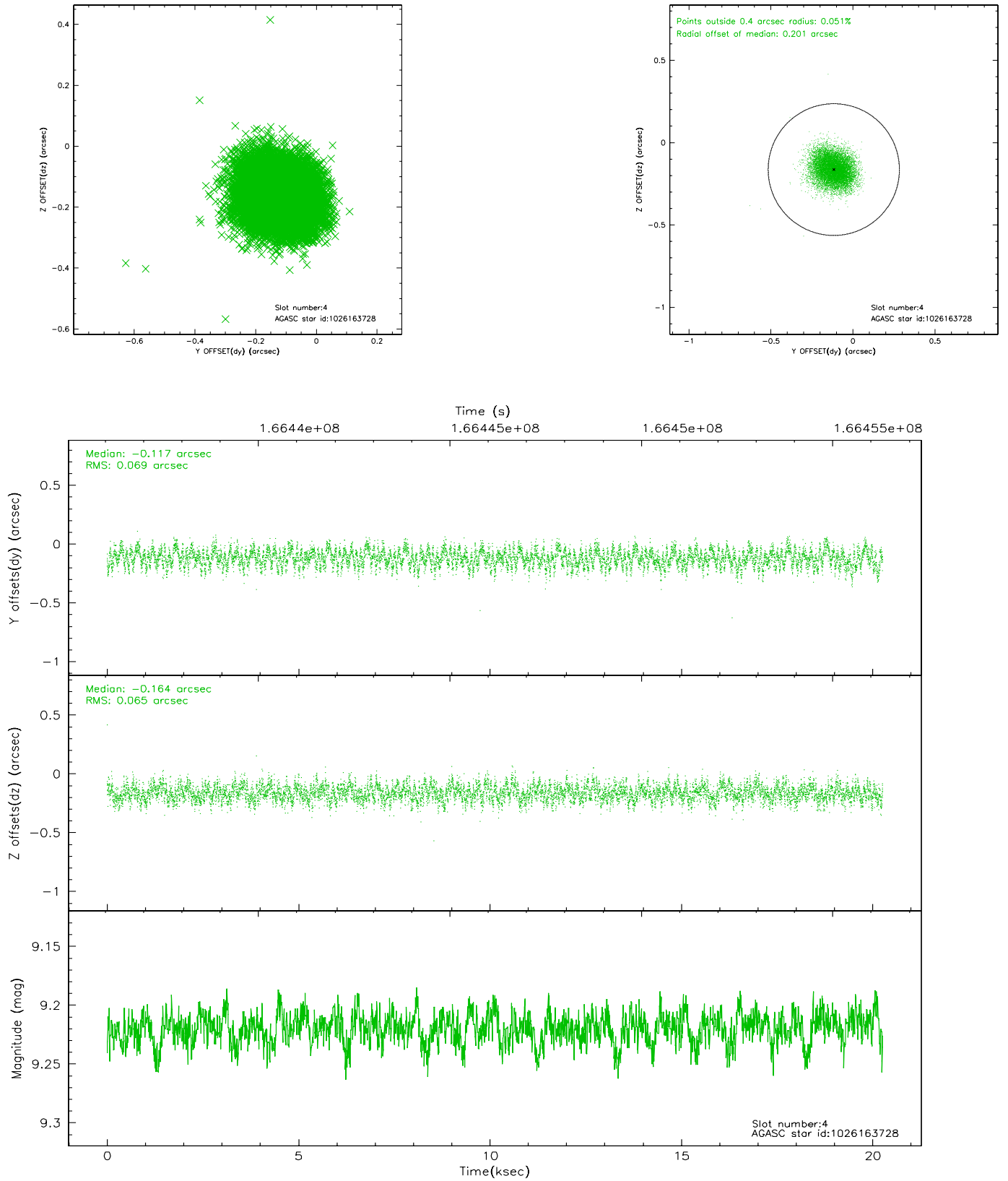


## 2.4 Star Slots

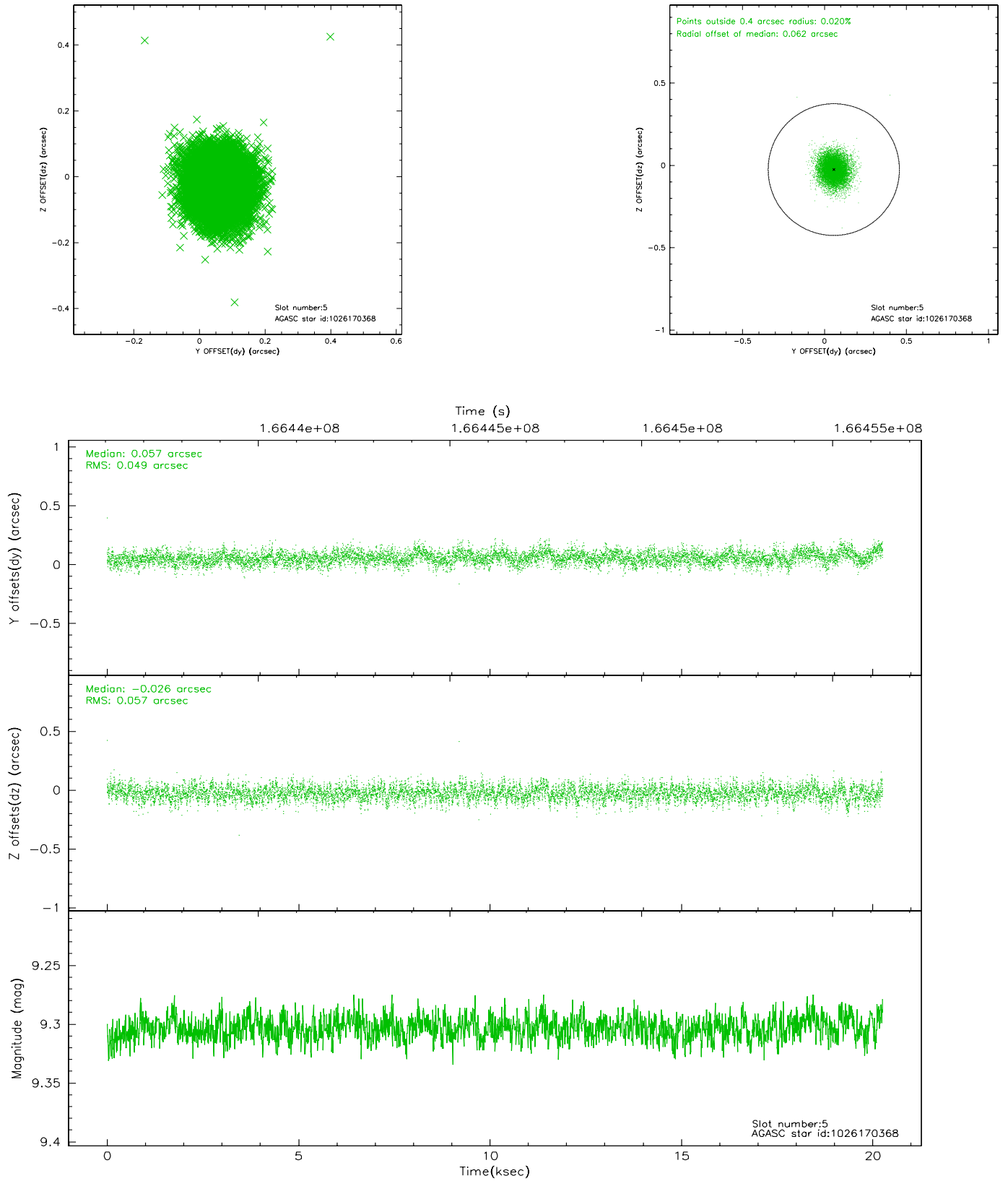
### 2.4.1 Slot 3



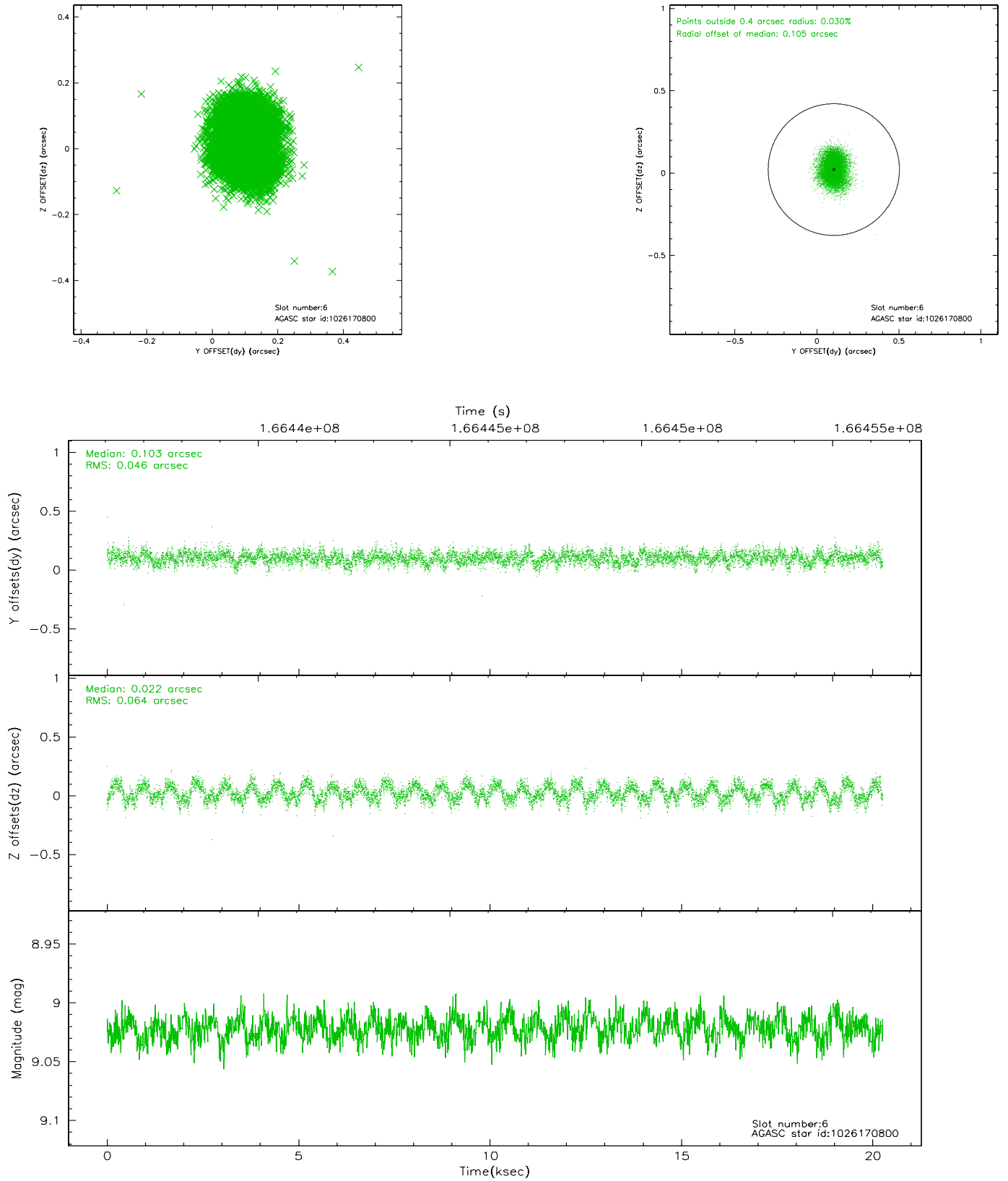
## 2.4.2 Slot 4



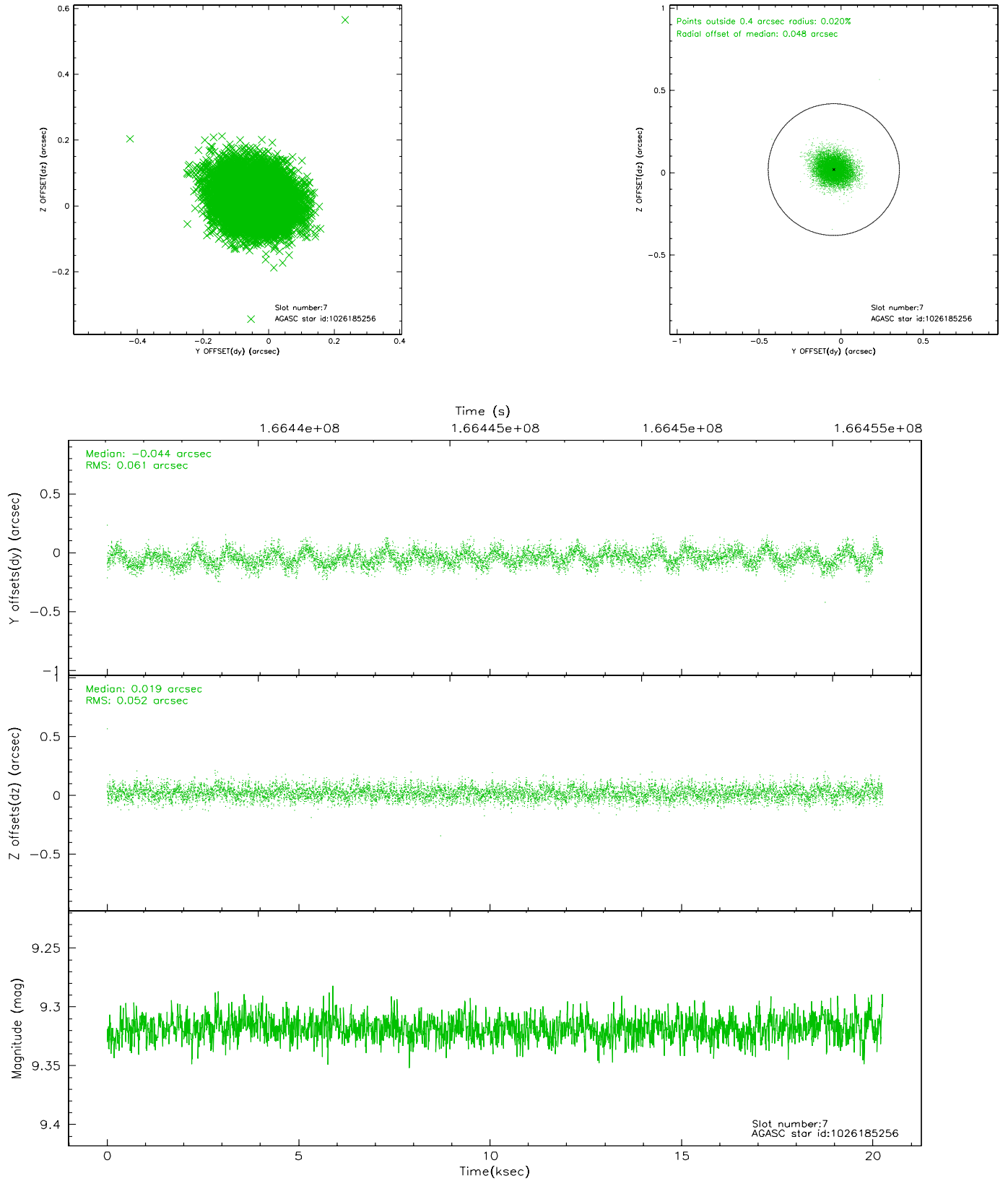
### 2.4.3 Slot 5



## 2.4.4 Slot 6

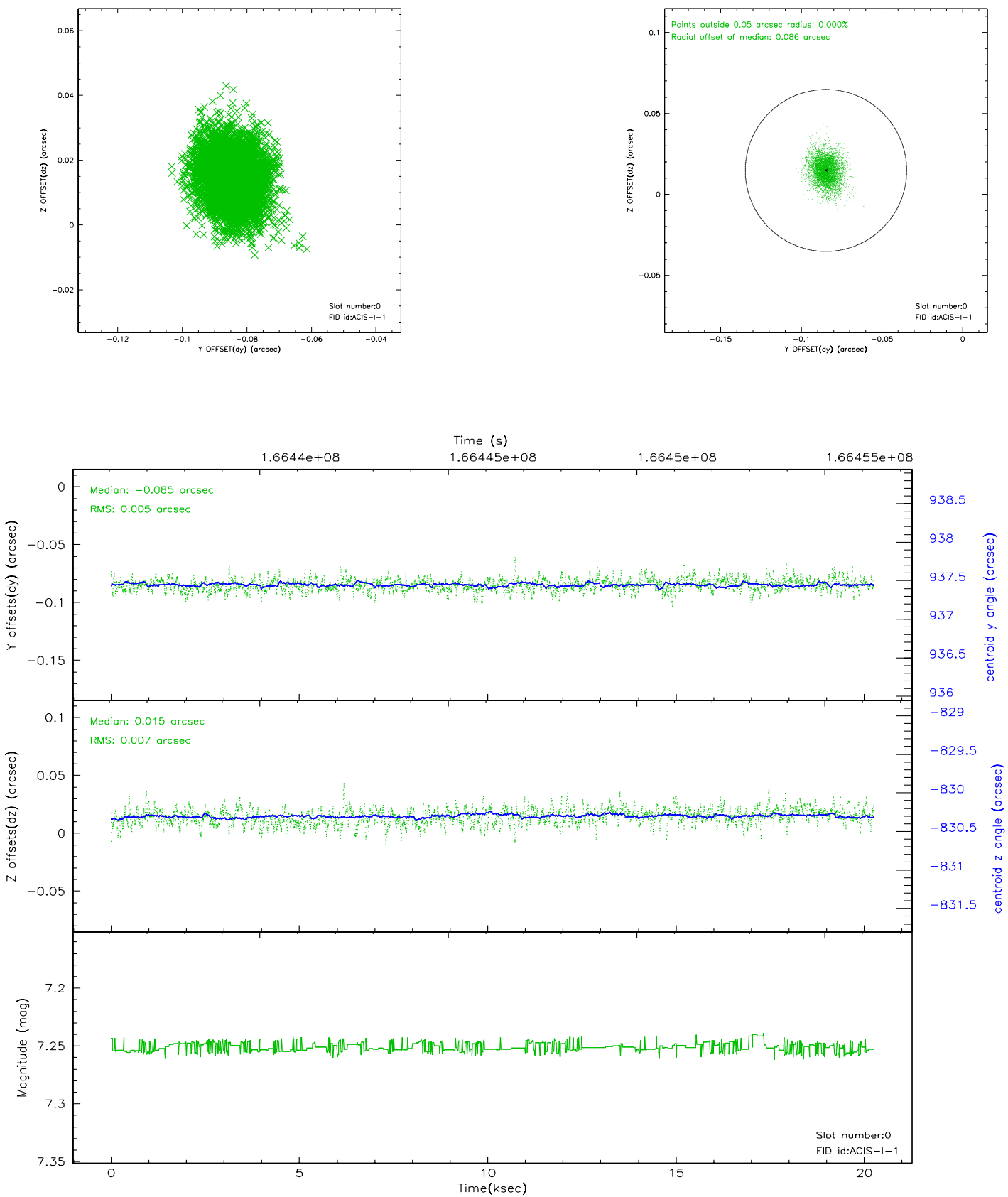


## 2.4.5 Slot 7

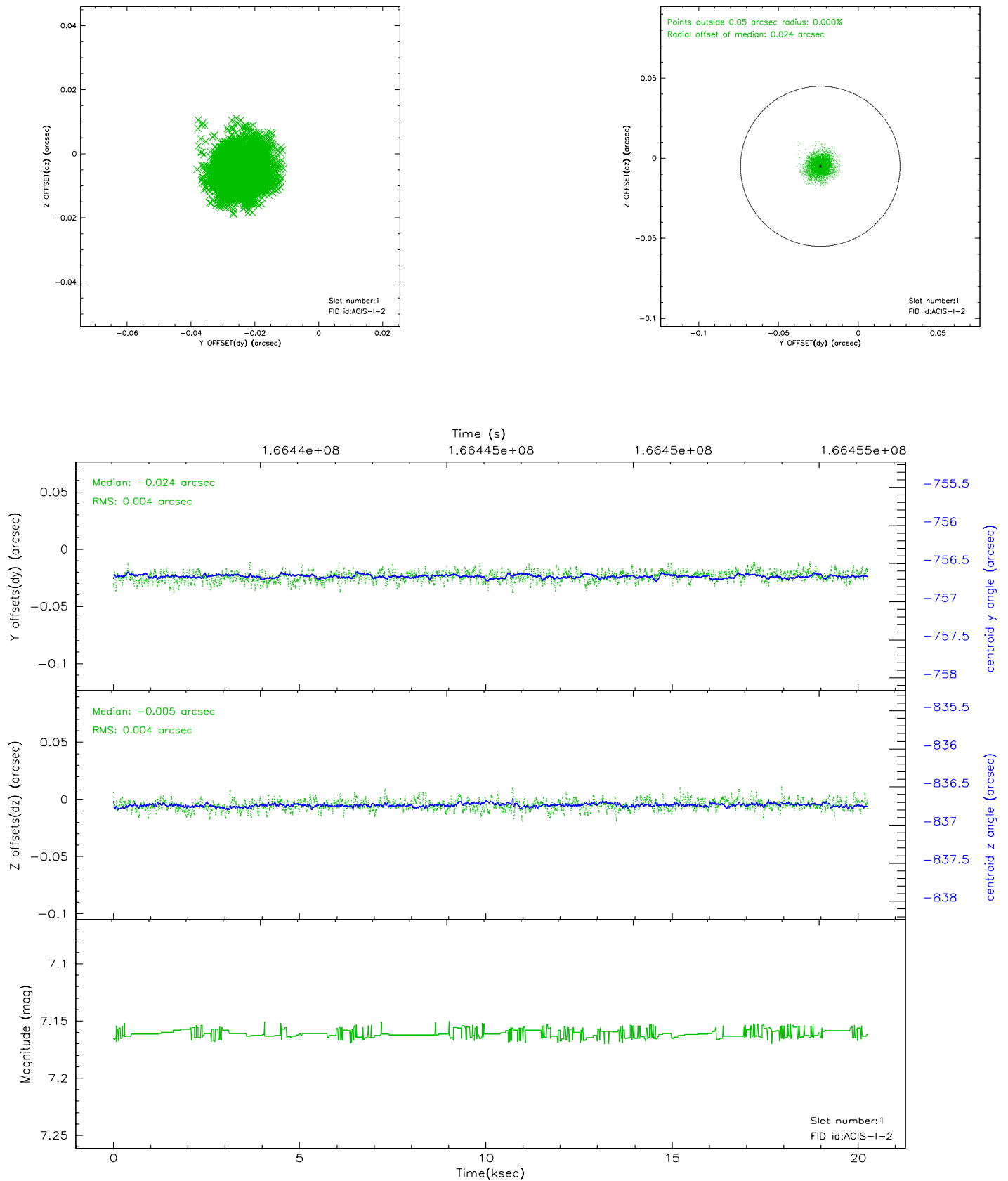


## 2.5 FID Slots

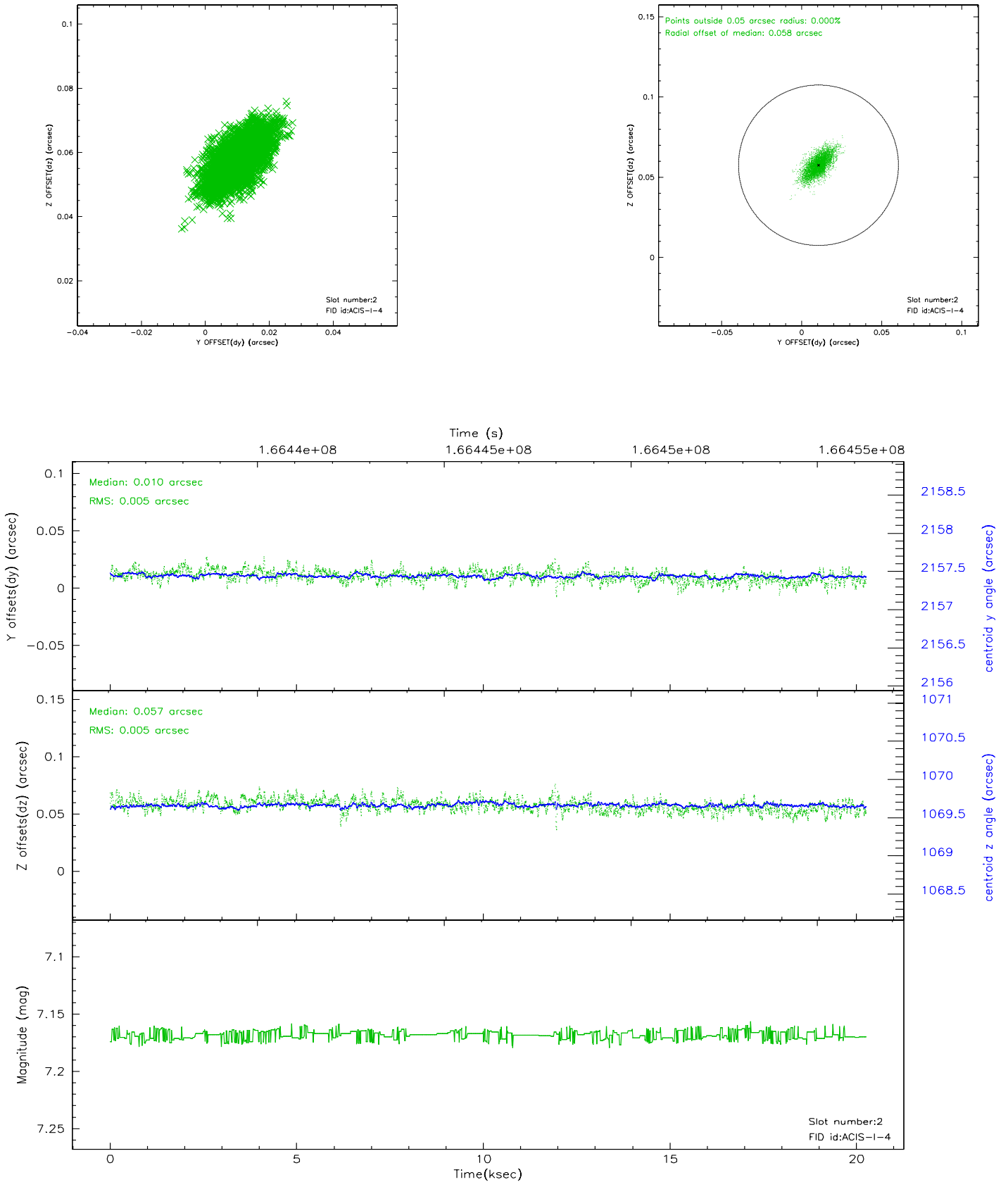
### 2.5.1 Slot 0



## 2.5.2 Slot 1

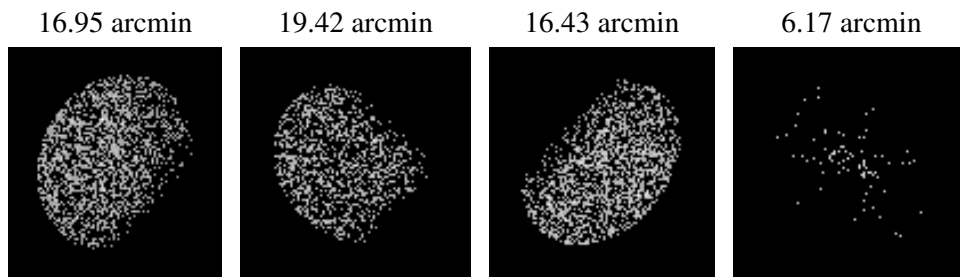


### 2.5.3 Slot 2





### 3 Point Sources



## A Summary

### A.1 Status

V&V Scientist	Beth Sundheim
V&V Date (YYYY-MM-DD)	2006.08.04
V&V Edition	1
V&V Disposition and Status	OK
V&V Charge Time	19.849

### A.2 Comments