

V&V Reference Report

L2 ASCDS Version : 8.4.5

Observation 4388 - L2 Version 3
Chandra X-Ray Center

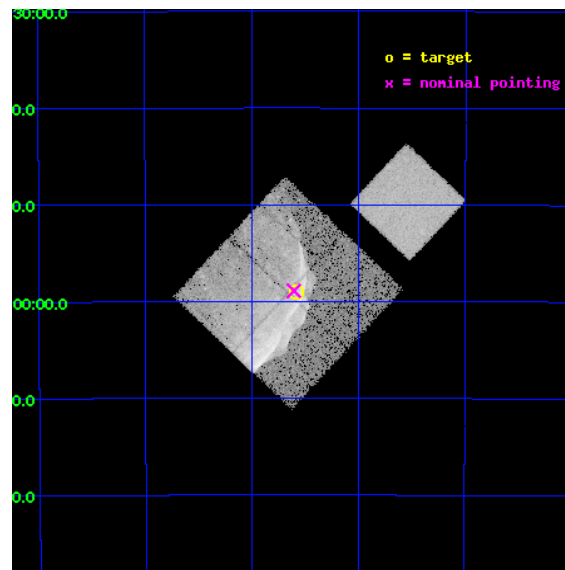
L2 Processing Date : Oct 26 2012

Contents

1	Front	2
2	OBI	3
2.1	OBI	3
2.1.1	Images	3
2.1.2	Bias	3
2.1.3	Parameters	4
2.1.4	Events	4
2.2	Compared Parameters	5
2.3	Aspect	6
2.4	Star Slots	9
2.4.1	Slot 3	9
2.4.2	Slot 4	10
2.4.3	Slot 5	11
2.4.4	Slot 6	12
2.4.5	Slot 7	13
2.5	FID Slots	14
2.5.1	Slot 0	14
2.5.2	Slot 1	15
2.5.3	Slot 2	16
A	Summary	17
A.1	Status	17
A.2	Comments	17

1 Front

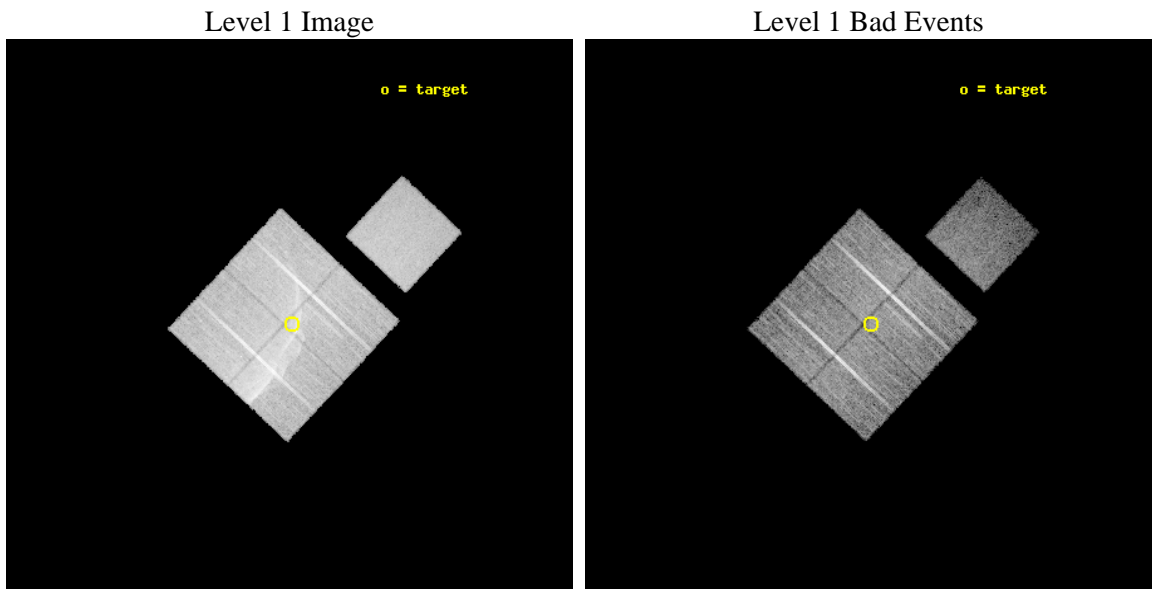
seq_num	500317	Sequence number
obs_id	4388	Observation id
title	STUDYING HIGH MACH NUMBER SHOCKS IN YOUNG SUPERNOVA REMNANTS WITH CHANDRA	Proposal title
observer	Prof. John Hughes	Principal investigator
object	SN1006	Source name
dtcycle	0	
cycle	P	events from which exps? Prim/Second/Both
ra_targ	225.395792	Observer's specified target RA [deg]
dec_targ	-41.9833	Observer's specified target Dec [deg]
ra_nom	225.40161699453	Nominal RA [deg]
dec_nom	-41.981709772001	Nominal Dec [deg]
roll_nom	43.212584461821	Nominal Roll [deg]
revision	3	Processing version of data
ontime	20055.994990796	Sum of GTIs [s]
livetime	19793.948651232	Livetime [s]
ontime0	20055.871870786	Sum of GTIs [s]
ontime1	20055.912910789	Sum of GTIs [s]
ontime2	20049.672010273	Sum of GTIs [s]
ontime3	20055.994990796	Sum of GTIs [s]
ontime7	20056.036010921	Sum of GTIs [s]
l2events	168452	Number of level 2 events



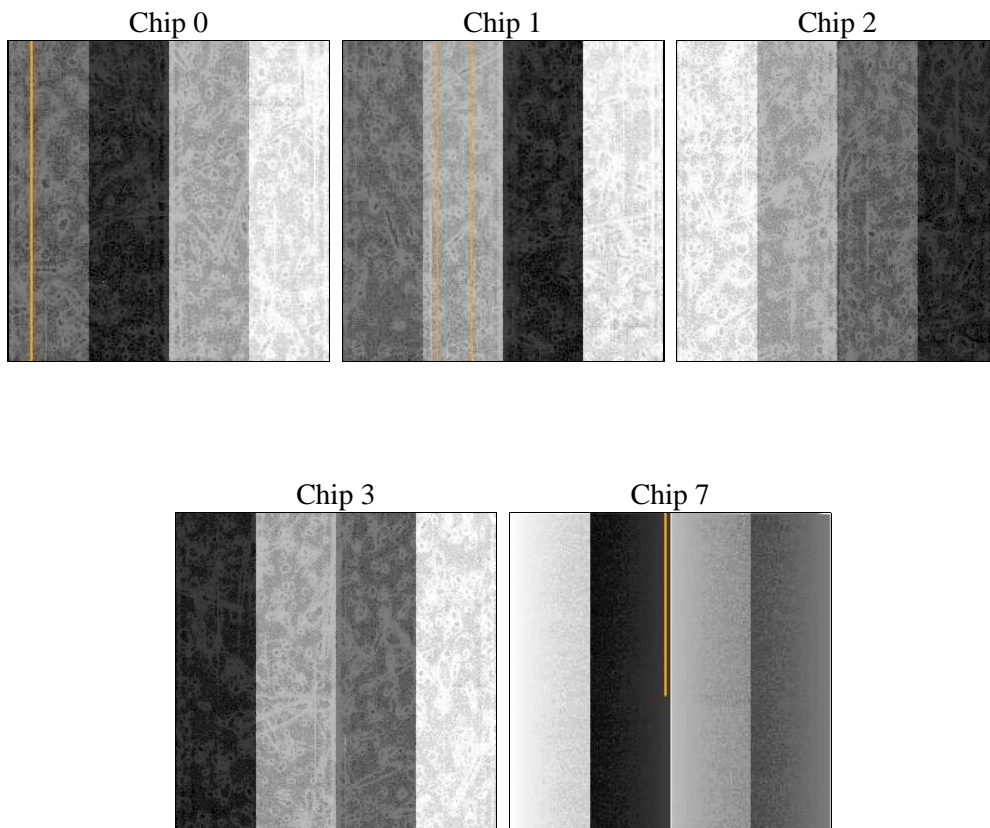
2 OBI

2.1 OBI

2.1.1 Images



2.1.2 Bias



2.1.3 Parameters

obi_num	0	Obi number	sched_exp_time	20280.000000	[s] Scheduled observation exposure time
ascdsver	8.4.5	Processing system revision	ontime	20055.994990796	Sum of GTIs [s]
caldsver	4.5.2	 	ontime0	20055.871870786	Sum of GTIs [s]
date	2012-10-26T12:36:17	Date and time of file creation	ontime1	20055.912910789	Sum of GTIs [s]
revision	3	Processing version of data	ontime2	20049.672010273	Sum of GTIs [s]
			ontime3	20055.994990796	Sum of GTIs [s]
			ontime7	20056.036010921	Sum of GTIs [s]
			l1events	587214	Number of level 1 events

2.1.4 Events

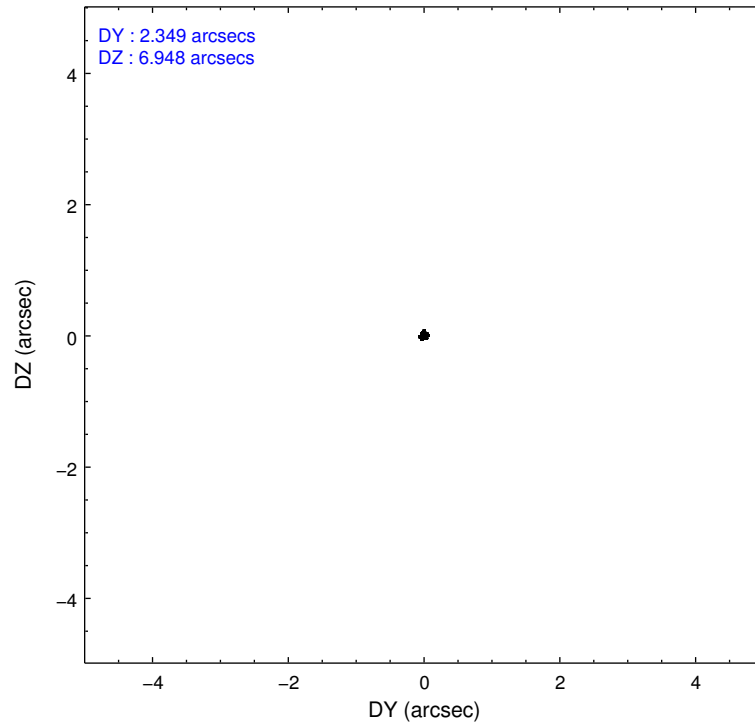
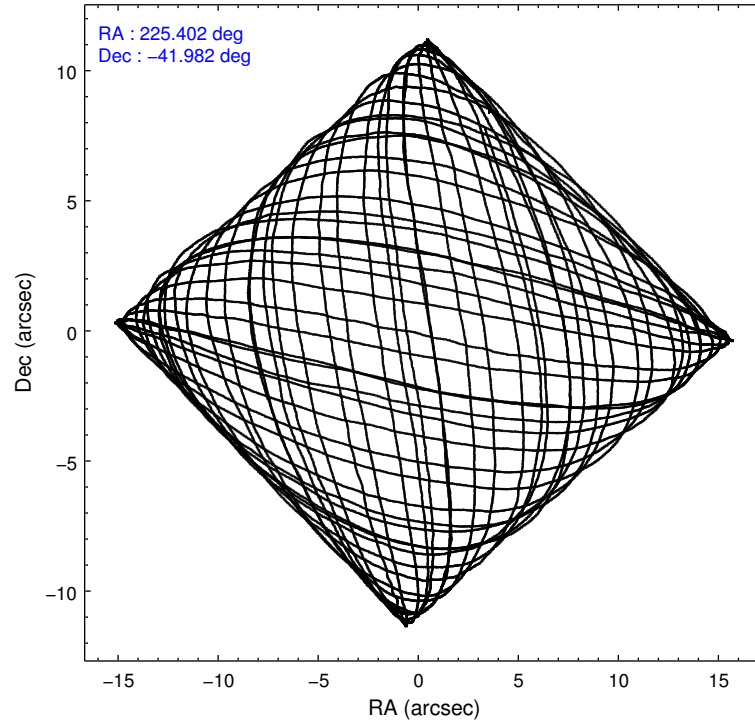
	ccd 0	ccd 1	ccd 2	ccd 3	ccd 7
level 1 events	116656	141772	123639	109400	95747
rejected events	82677	86361	95305	91448	49622
rejected %	70%	60%	77%	83%	51%

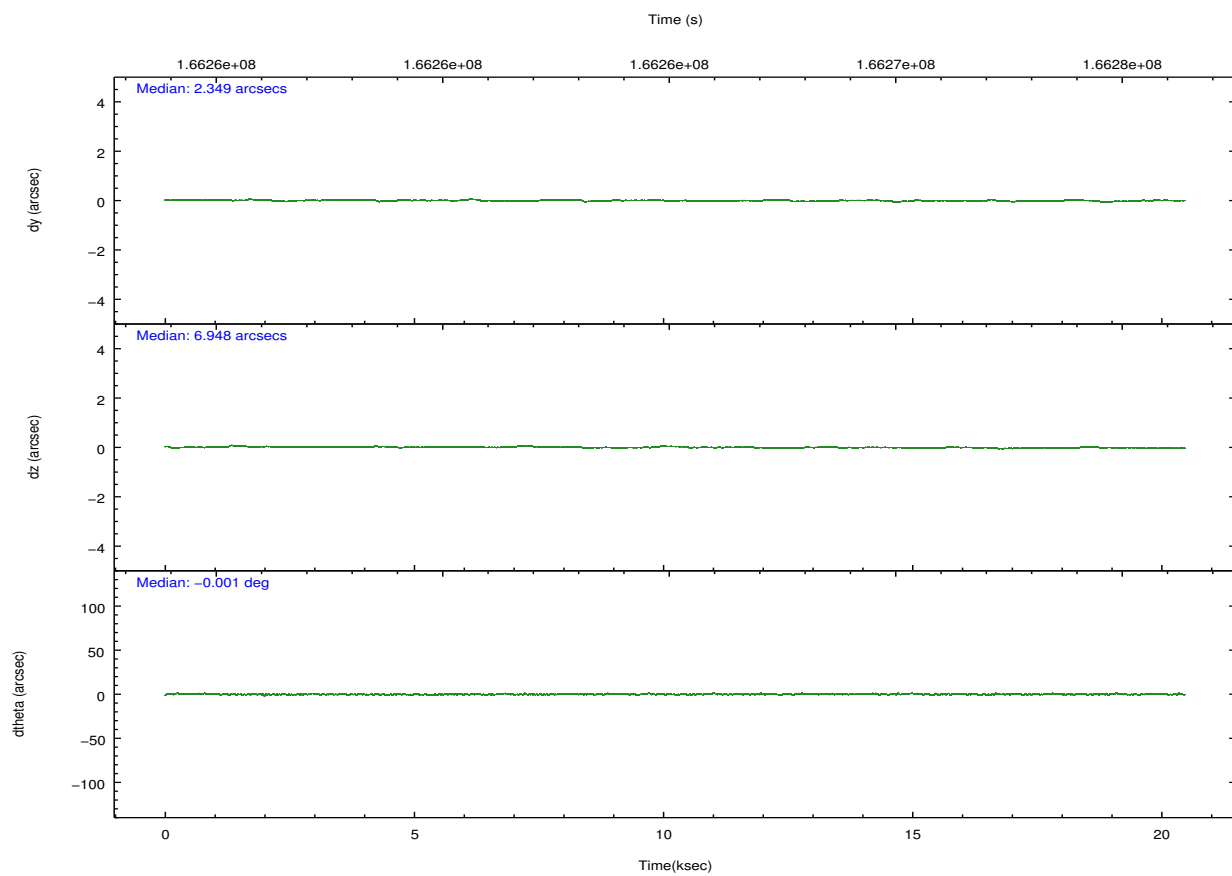
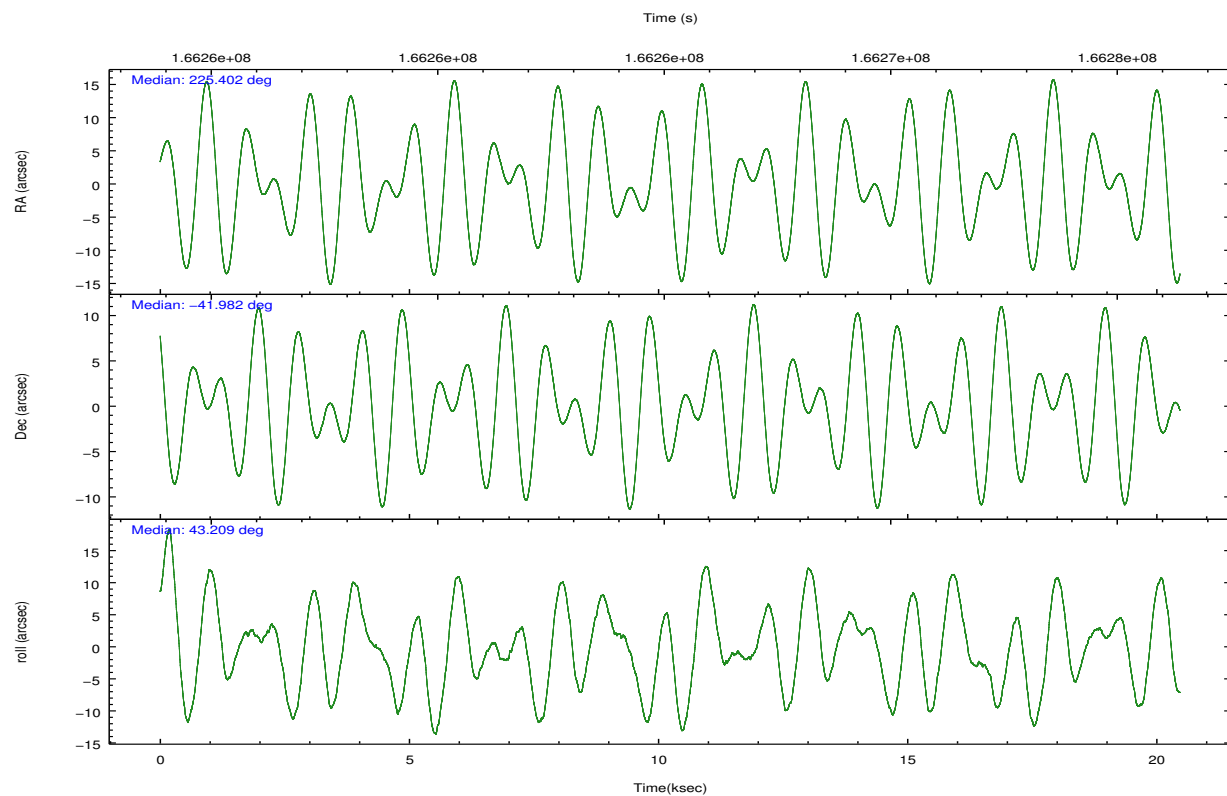
	ccd 0	ccd 1	ccd 2	ccd 3	ccd 7
grade 0 events	25209	42078	20213	10904	4565
	21%	29%	16%	9%	4%
grade 1 events	128	200	117	69	105
	0%	0%	0%	0%	0%
grade 2 events	3841	6100	3542	2702	8820
	3%	4%	2%	2%	9%
grade 3 events	1545	2240	1402	1262	4218
	1%	1%	1%	1%	4%
grade 4 events	1423	2334	1347	1286	4242
	1%	1%	1%	1%	4%
grade 5 events	3044	3385	2947	3320	10027
	2%	2%	2%	3%	10%
grade 6 events	1971	2678	1840	1805	24296
	1%	1%	1%	1%	25%
grade 7 events	79495	82757	92231	88052	39474
	68%	58%	74%	80%	41%

2.2 Compared Parameters

Parameter	Planned	Actual	Parameter	Planned	Actual
Instrument	ACIS	ACIS	Obspar format version number	7	7
Detector	ACIS-01237	ACIS-01237	Obspar file type	PREDICTED	ACTUAL
Grating	NONE	NONE	Obspar update status	NONE	UPDATED
Data mode	VFAINT	VFAINT	Number of optional ACIS chips dropped	0	0
Observation mode	POINTING	POINTING	On-chip summing requested	N	N
[deg] Pointing RA	225.391146	225.4016169945297	Subarray requested	NONE	NONE
[deg] Pointing Dec	-42.007937	-41.98170977200131	Alternating exposures requested	N	N
[deg] Pointing Roll	42.996891	43.21258446182136	[s] Primary exposure time	0.000000	3.1
[mm] SIM focus pos	-0.782348	-0.7809083437167272			
[mm] SIM defocus	0	0.001439871863259334			
[mm] SIM translation stage pos	-233.592463	-233.5874344608287			
[mm] SIM translation stage offset	0	-0.005018542100998502			
[s] Observation start time (MET)	166255079.184000	166254702.7614			
Observation start date	2003-04-09T05:56:55	2003-04-09T05:51:42			
[s] Observation end time (MET)	166275359.184000	166275492.83728			
Observation end date	2003-04-09T11:34:55	2003-04-09T11:38:12			
Read mode	TIMED	TIMED			

2.3 Aspect



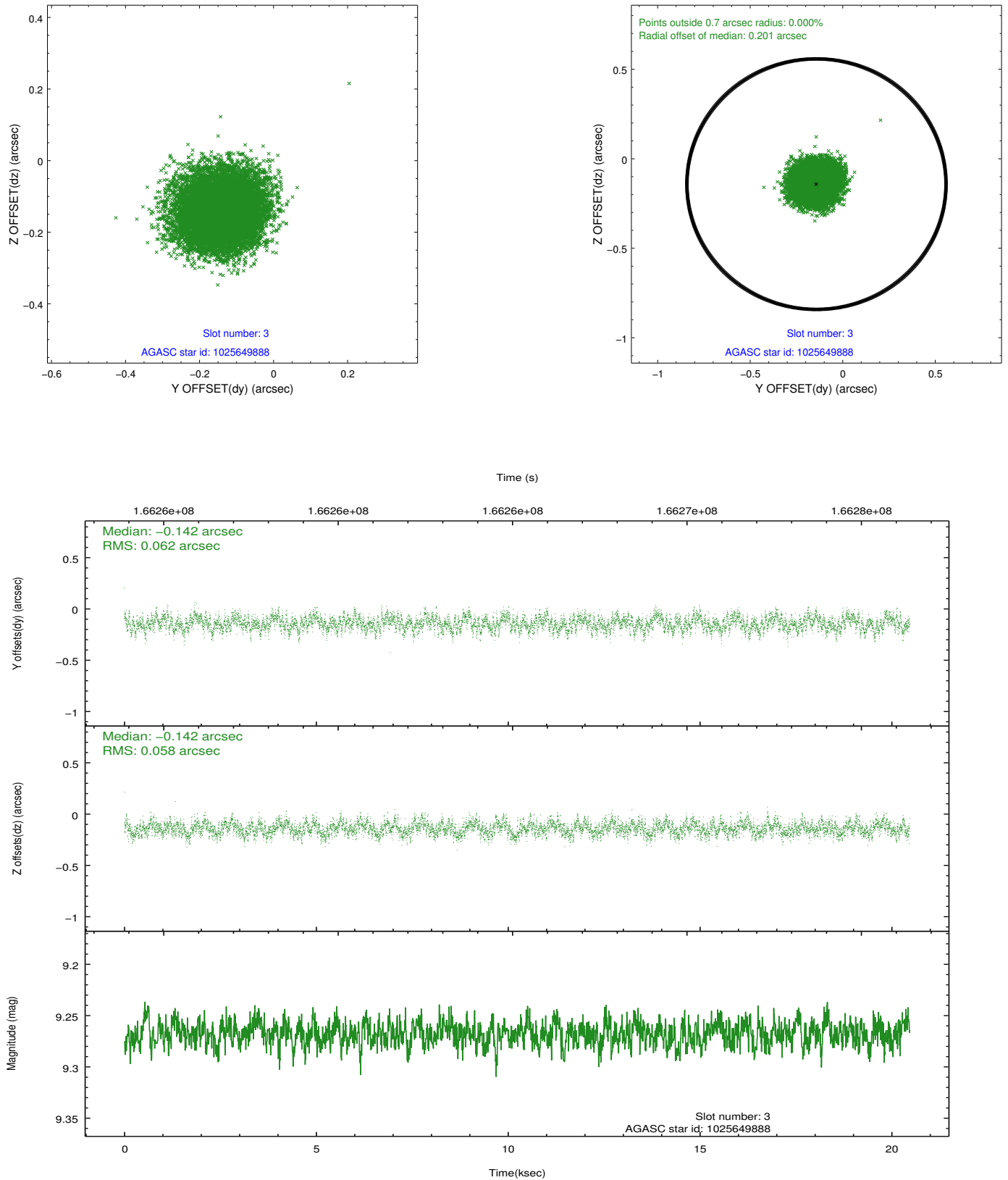


Slot Statistics

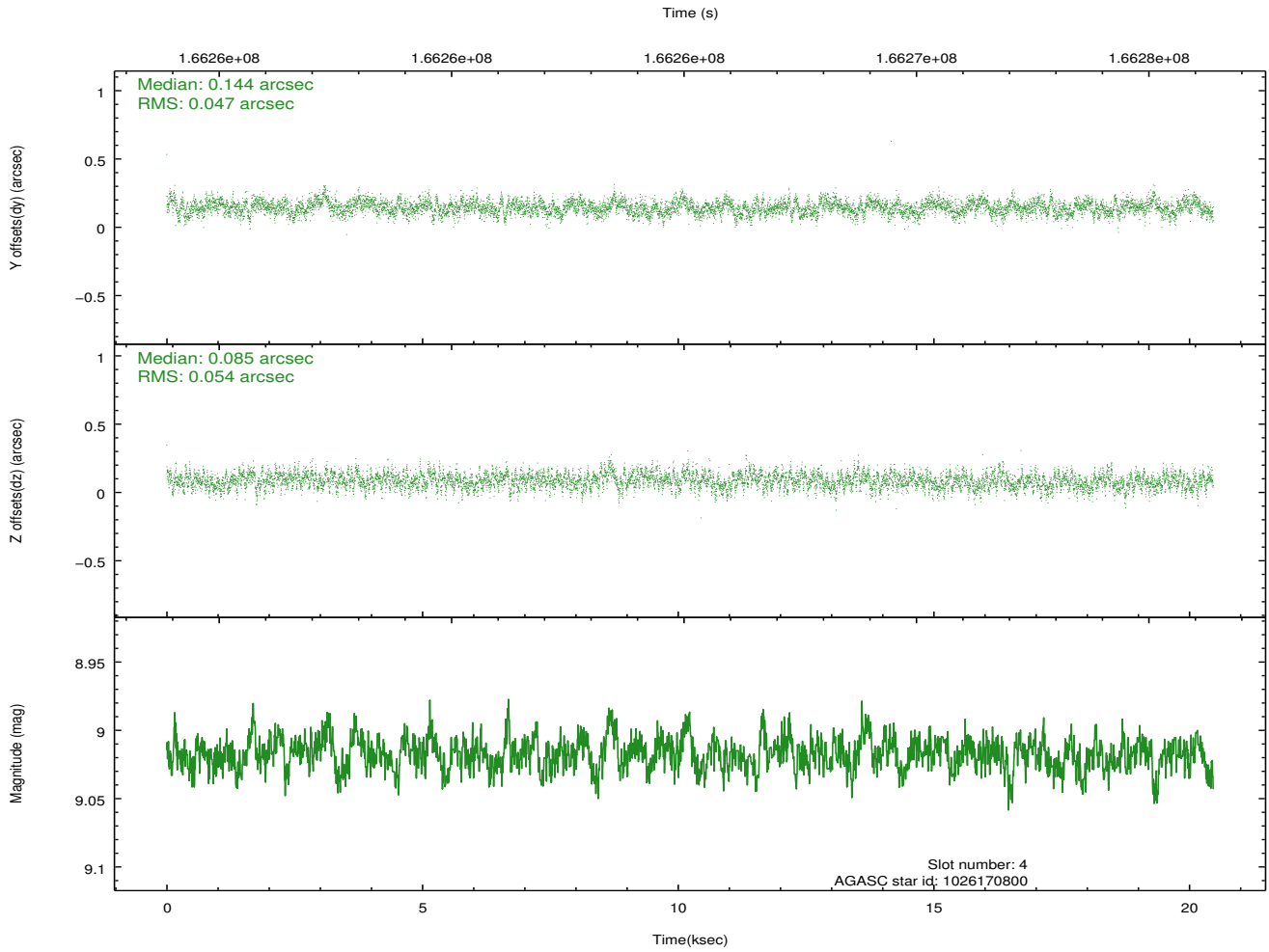
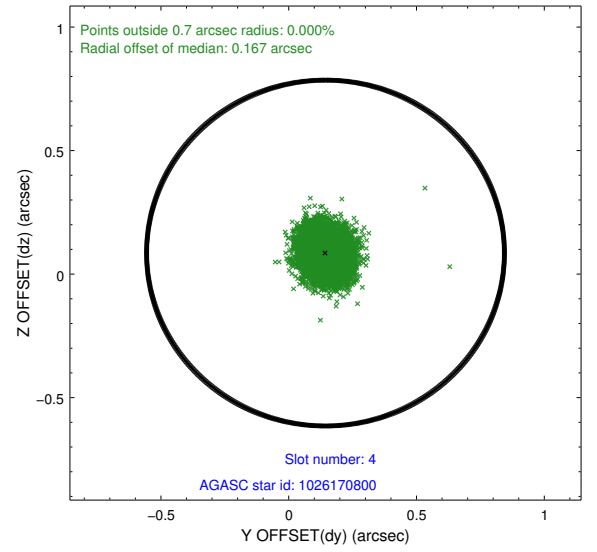
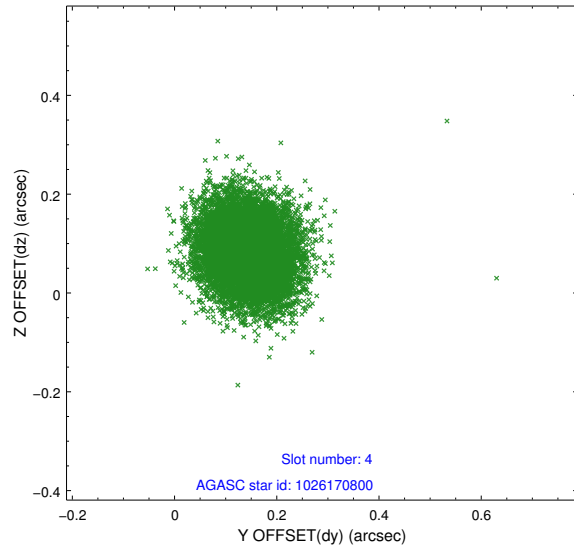
slot	status	id	mag	n_pts	med_dy	med_dz	dr1	dr2	ra	dec	mean_y	mean_z
0	FID	ACIS-I-1	7.25	4992	0.012	0.003	0.006	0.011	0.000000	0.000000	937.45	-830.36
1	FID	ACIS-I-5	7.24	4991	-0.077	0.054	0.006	0.011	0.000000	0.000000	-1810.60	1067.15
2	FID	ACIS-I-6	7.26	4992	-0.026	0.013	0.007	0.011	0.000000	0.000000	402.82	1711.77
3	GUIDE	1025649888	9.27	9969	-0.142	-0.142	0.091	0.144	225.540879	-41.189826	2305.05	1877.35
4	GUIDE	1026170800	9.02	9983	0.144	0.085	0.076	0.123	225.400024	-42.381702	-899.67	-999.99
5	GUIDE	1026183784	9.19	9979	-0.218	0.160	0.094	0.149	226.363370	-41.841537	2305.60	-1350.66
6	GUIDE	1025639384	9.40	9969	0.012	-0.026	0.097	0.161	225.439759	-41.063650	2415.26	2396.43
7	GUIDE	1026042768	9.40	9967	0.203	-0.076	0.092	0.150	224.552169	-42.295856	-2347.64	757.49

2.4 Star Slots

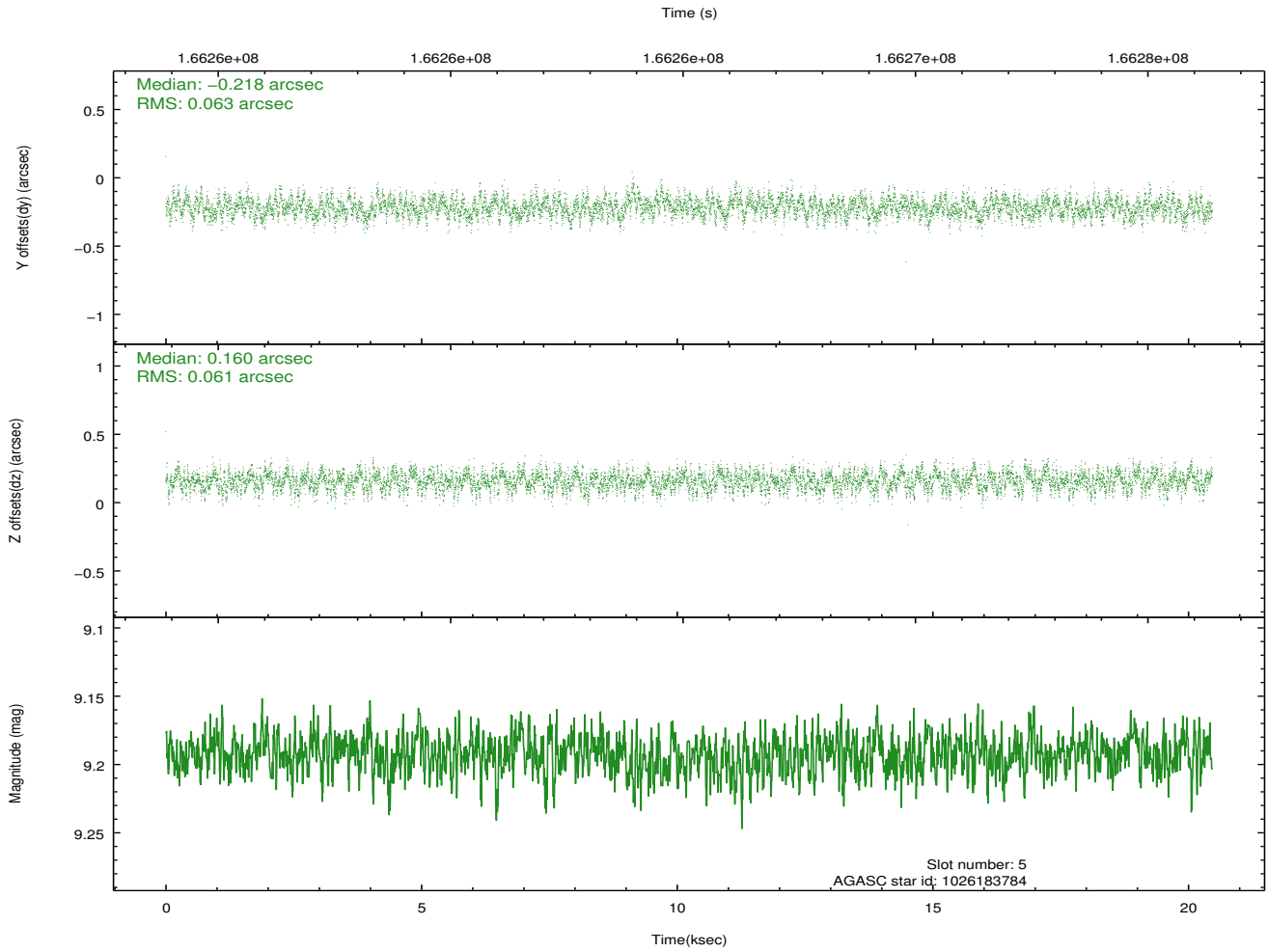
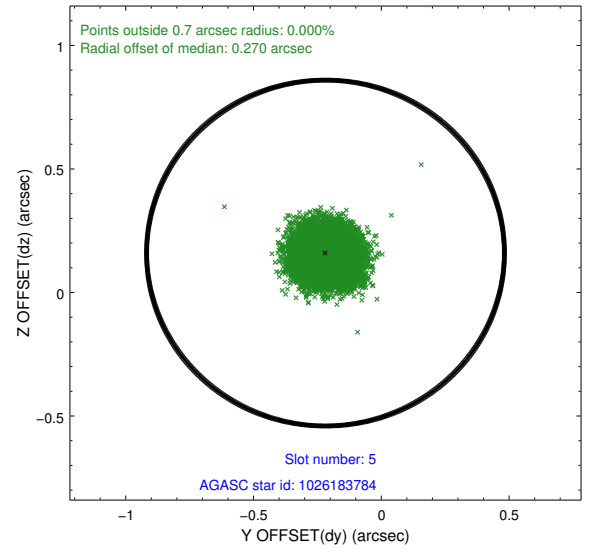
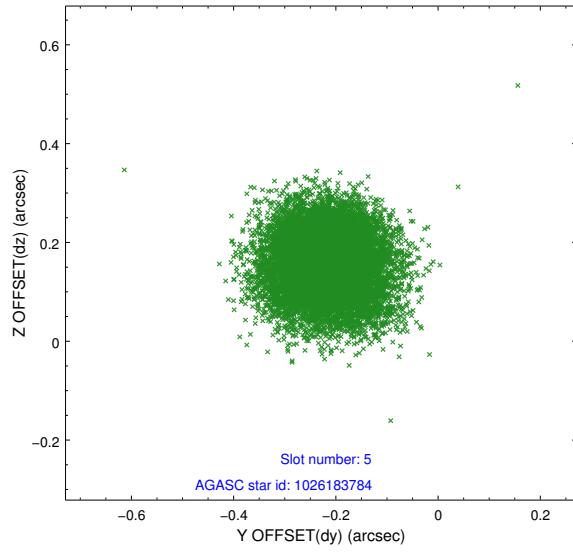
2.4.1 Slot 3



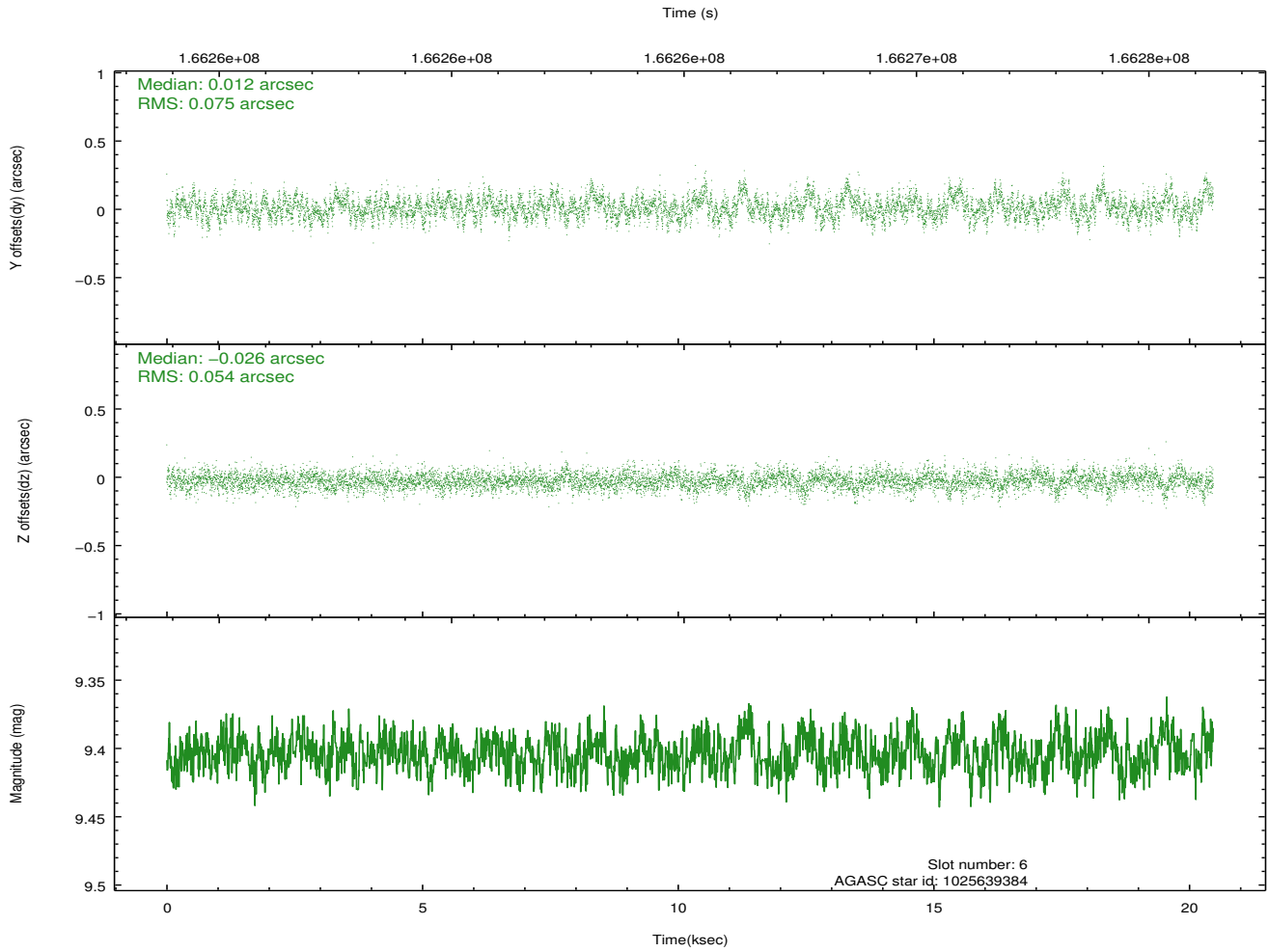
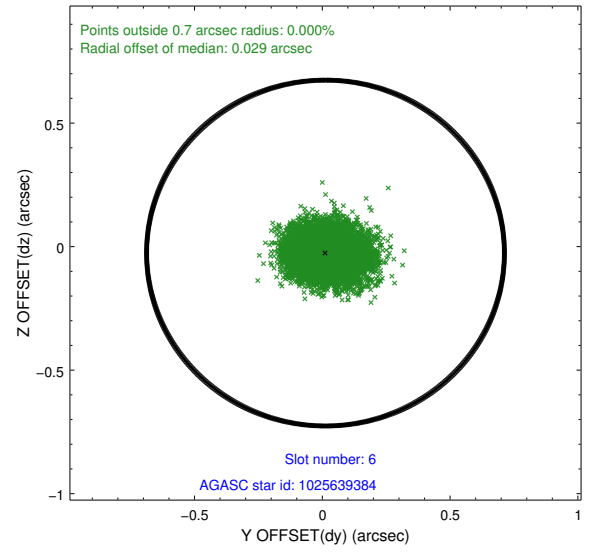
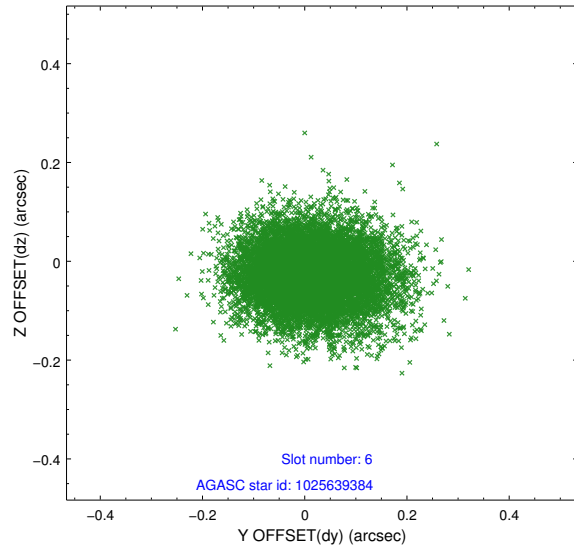
2.4.2 Slot 4



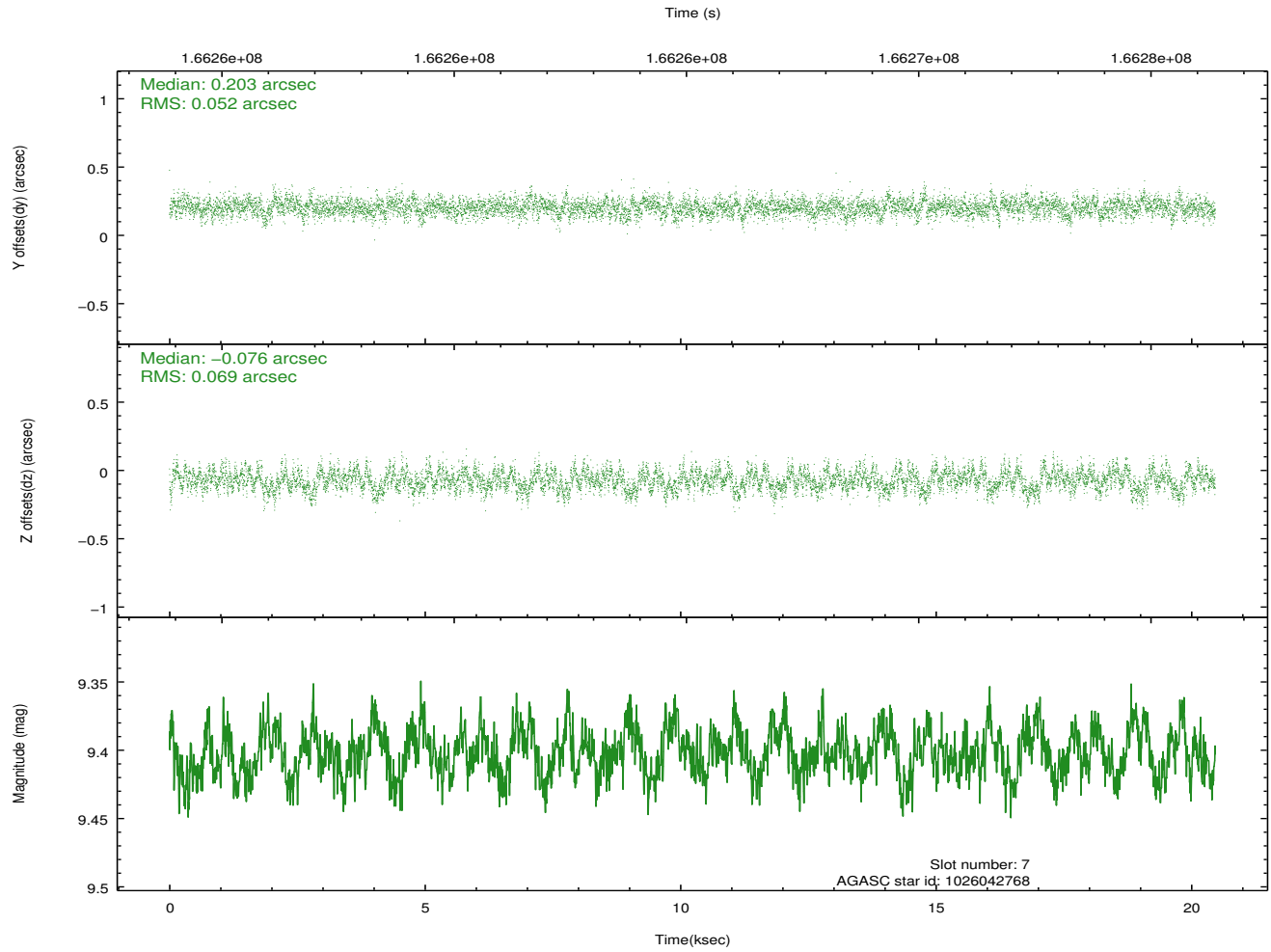
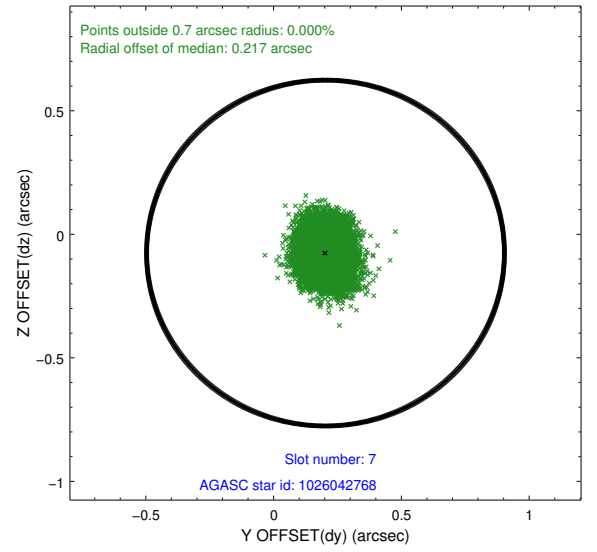
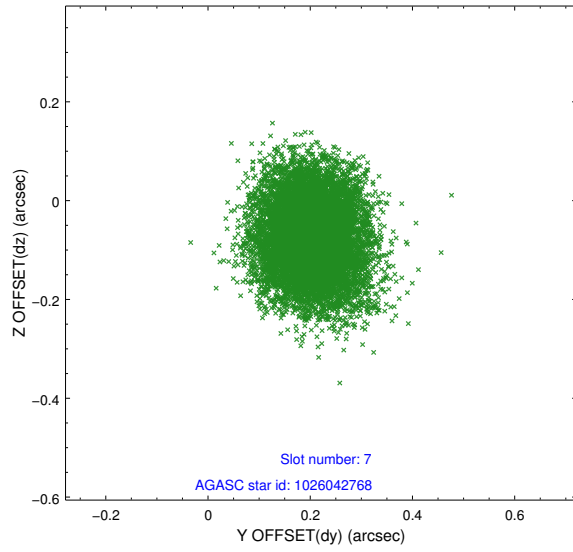
2.4.3 Slot 5



2.4.4 Slot 6

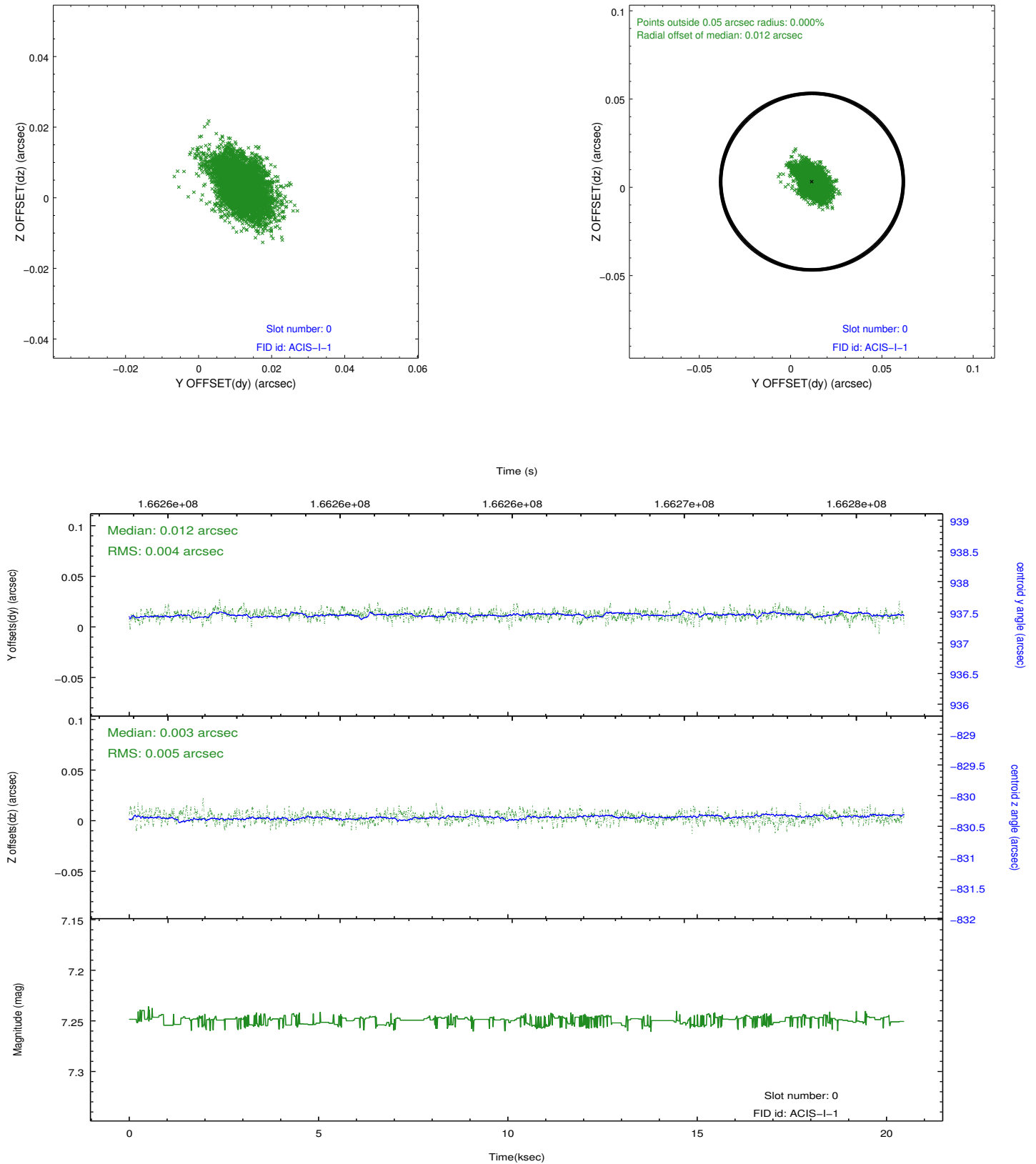


2.4.5 Slot 7

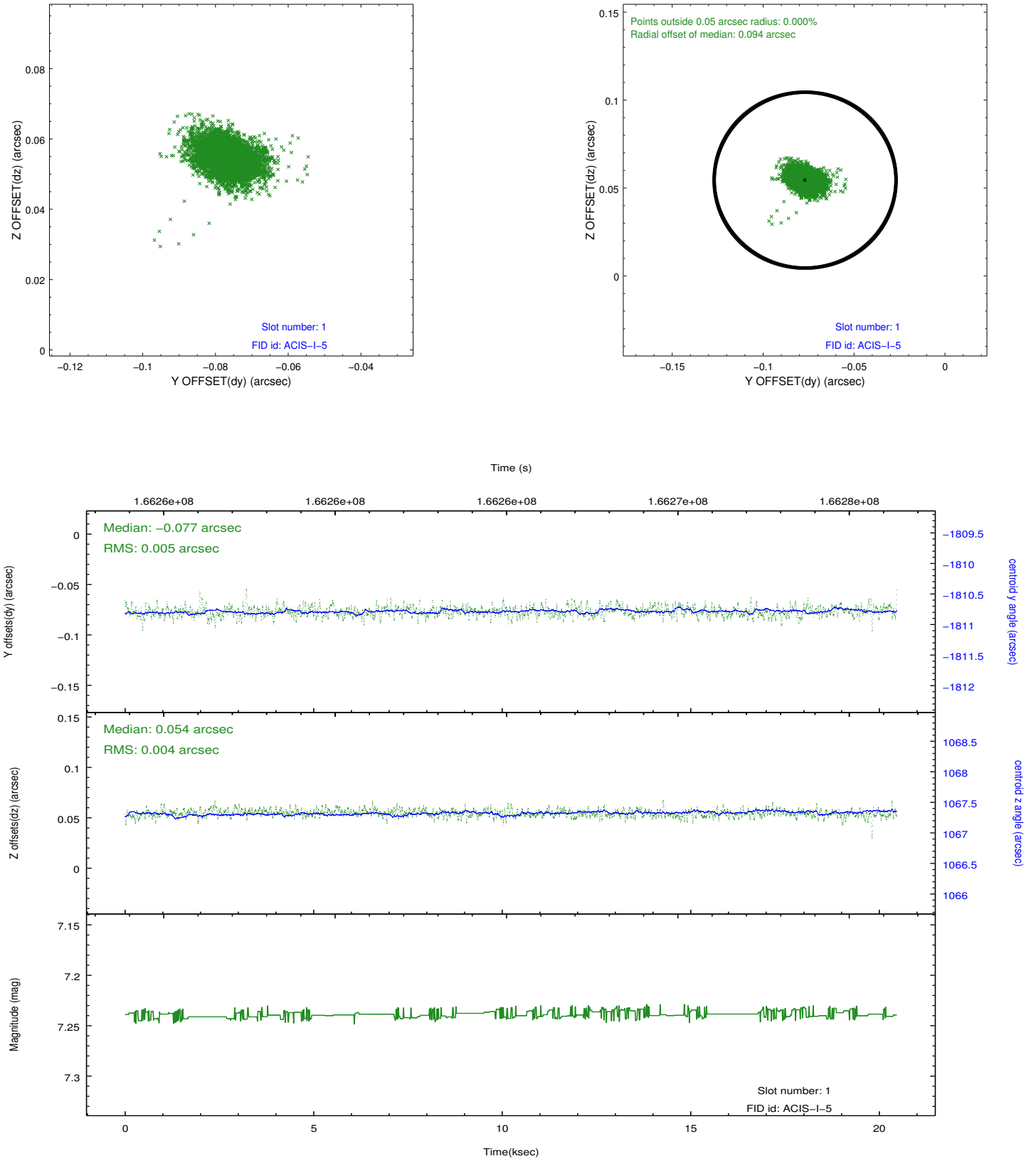


2.5 FID Slots

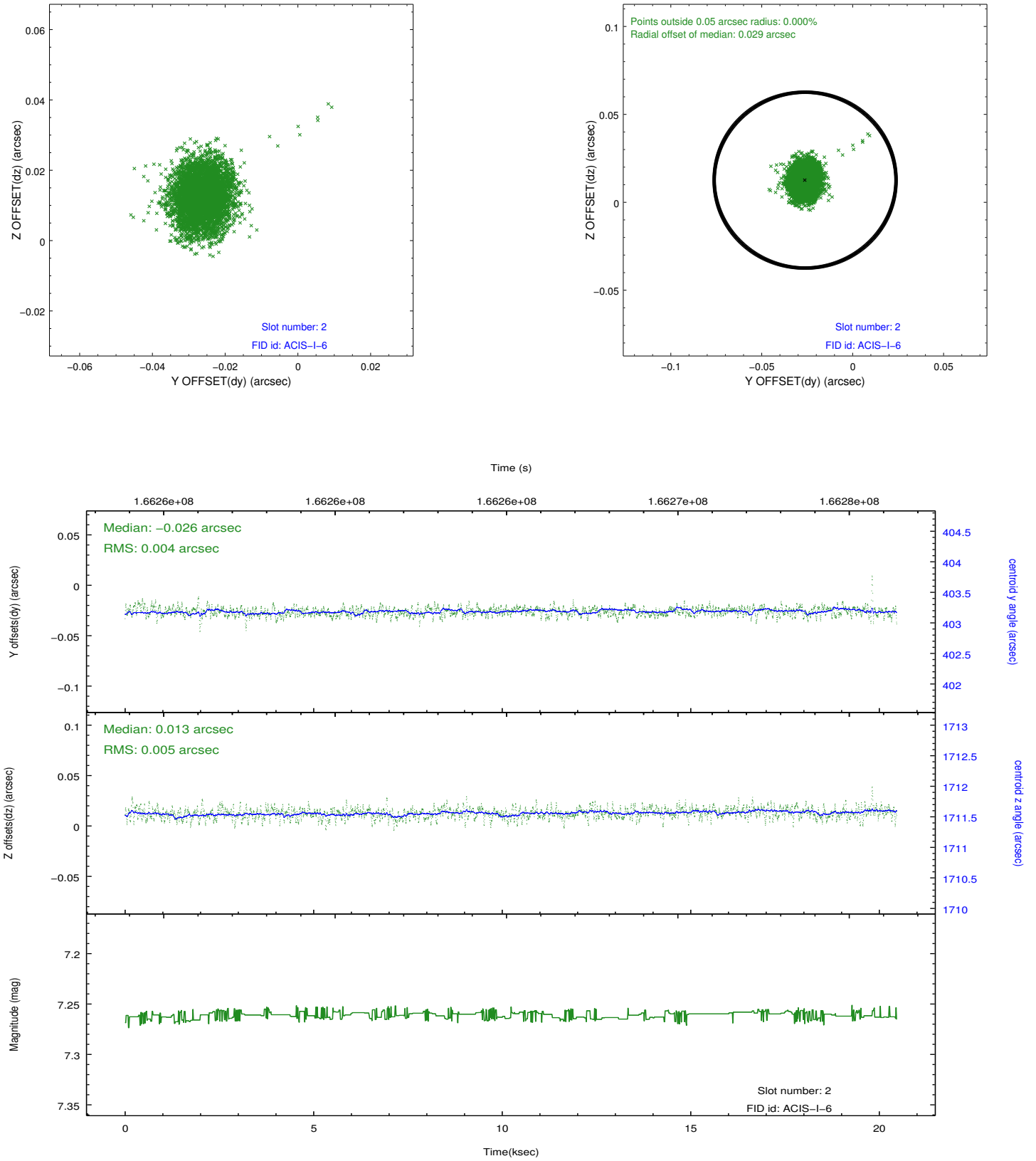
2.5.1 Slot 0



2.5.2 Slot 1



2.5.3 Slot 2



A Summary

A.1 Status

V&V Scientist	Jen Lauer
V&V Date (YYYY-MM-DD)	2012.11.14
V&V Edition	1
V&V Disposition and Status	OK
V&V Charge Time	20.056

A.2 Comments